

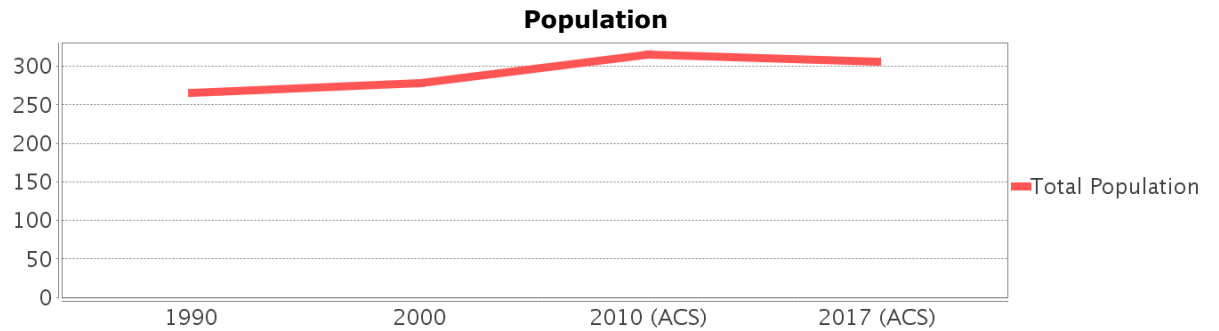
# Sociocultural Data Report

## Astor

**Area:** 2.504 square miles  
**Jurisdiction(s):** Cities: NA  
 Counties: Volusia, Lake

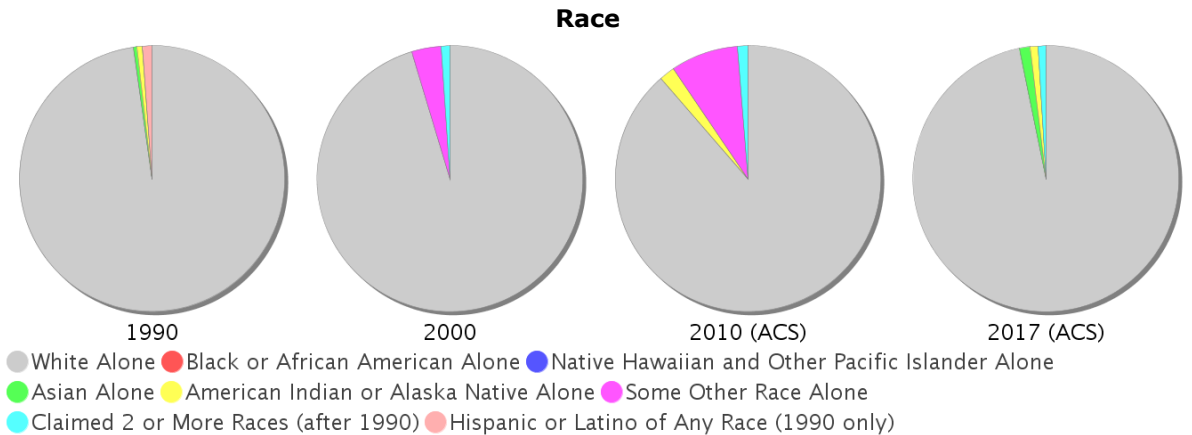
### General Population Trends

Description	1990	2000	2010 (ACS)	2017 (ACS)
Total Population	265	278	315	306
Total Households	122	117	137	136
Average Persons per Acre	0.15	0.18	0.21	0.21
Average Persons per Household	3.30	2.43	2.00	2.13
Average Persons per Family	2.86	2.92	3.00	2.99
Males	132	134	162	151
Females	134	145	154	155

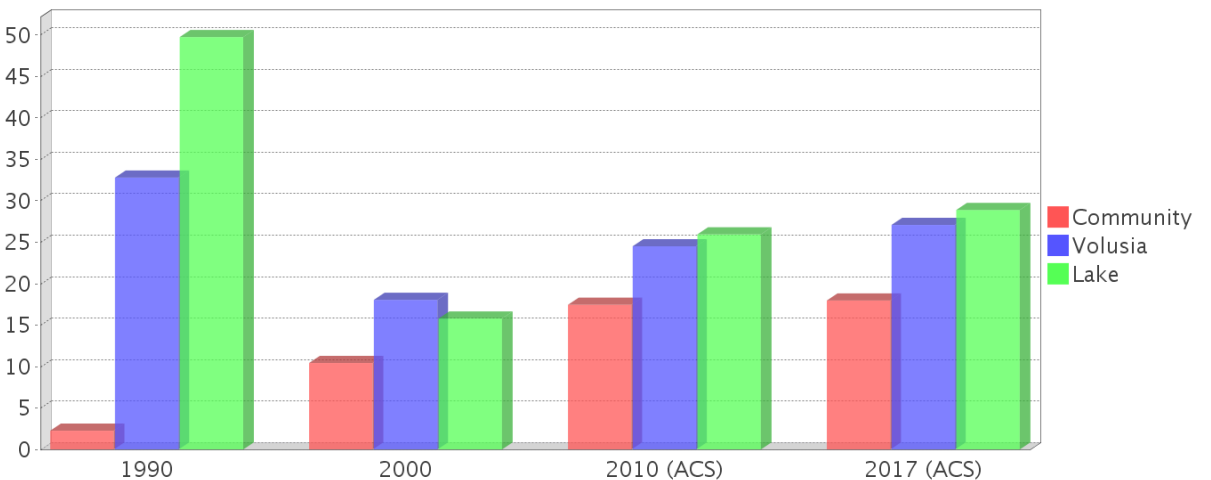


### Race and Ethnicity Trends

Description	1990	2000	2010 (ACS)	2017 (ACS)
White Alone	263 (99.25%)	264 (94.96%)	280 (88.89%)	297 (97.06%)
Black or African American Alone	0 (0.00%)	0 (0.00%)	0 (0.00%)	0 (0.00%)
Native Hawaiian and Other Pacific Islander Alone	0 (0.00%)	0 (0.00%)	0 (0.00%)	0 (0.00%)
Asian Alone	1 (0.38%)	0 (0.00%)	0 (0.00%)	4 (1.31%)
American Indian or Alaska Native Alone	2 (0.75%)	0 (0.00%)	6 (1.90%)	3 (0.98%)
Some Other Race Alone	0 (0.00%)	10 (3.60%)	26 (8.25%)	0 (0.00%)
Claimed 2 or More Races	NA (NA)	3 (1.08%)	4 (1.27%)	3 (0.98%)
Hispanic or Latino of Any Race	3 (1.13%)	25 (8.99%)	48 (15.24%)	48 (15.69%)
Not Hispanic or Latino	262 (98.87%)	253 (91.01%)	267 (84.76%)	258 (84.31%)
Minority	6 (2.26%)	29 (10.43%)	55 (17.46%)	55 (17.97%)



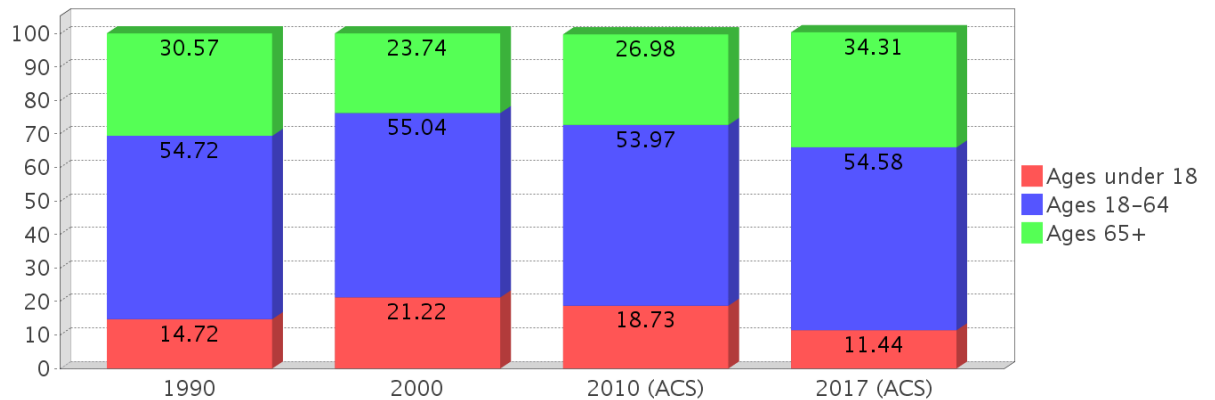
### Minority Percentage Population



### Age Trends

Description	1990	2000	2010 (ACS)	2017 (ACS)
Under Age 5	3.40%	7.55%	4.76%	2.29%
Ages 5-17	11.32%	13.67%	13.97%	9.15%
Ages 18-21	3.02%	3.60%	2.86%	8.17%
Ages 22-29	7.92%	5.76%	5.71%	2.61%
Ages 30-39	9.43%	14.75%	8.25%	8.17%
Ages 40-49	11.32%	8.63%	11.75%	6.54%
Ages 50-64	23.02%	22.30%	25.40%	29.08%
Age 65 and Over	30.57%	23.74%	26.98%	34.31%
-Ages 65-74	20.75%	14.75%	17.78%	19.93%
-Ages 75-84	8.68%	8.63%	6.98%	10.78%
-Age 85 and Over	1.13%	0.72%	1.90%	3.59%
Median Age	NA	47	50	59

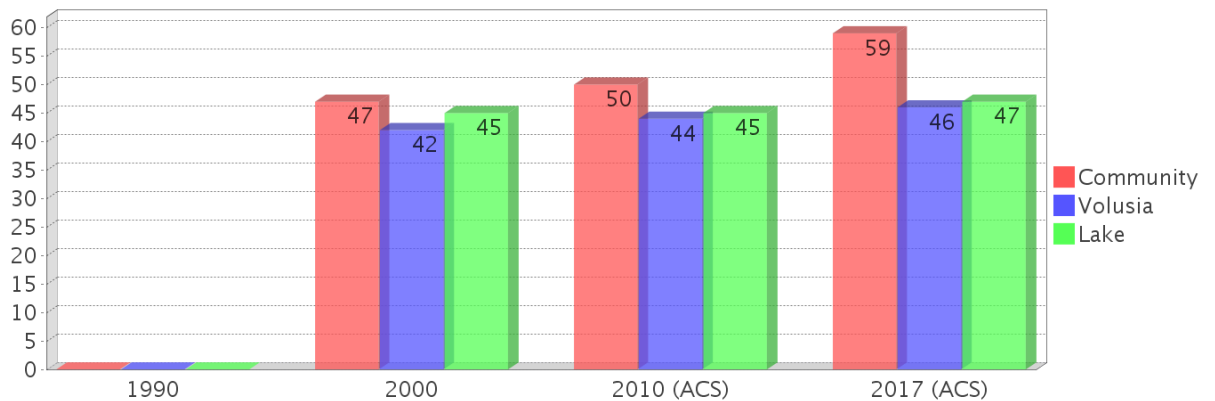
Percentage Population by Age Group



### Income Trends

Description	1990	2000	2010 (ACS)	2017 (ACS)
Median Household Income	\$17,898	\$30,313	\$30,903	\$27,094
Median Family Income	\$21,618	\$28,594	\$33,929	\$18,534
Population below Poverty Level	11.70%	12.59%	17.14%	22.55%
Households below Poverty Level	12.30%	14.53%	17.52%	19.12%
Households with Public Assistance Income	5.74%	0.00%	2.19%	1.47%

Median Age Comparison

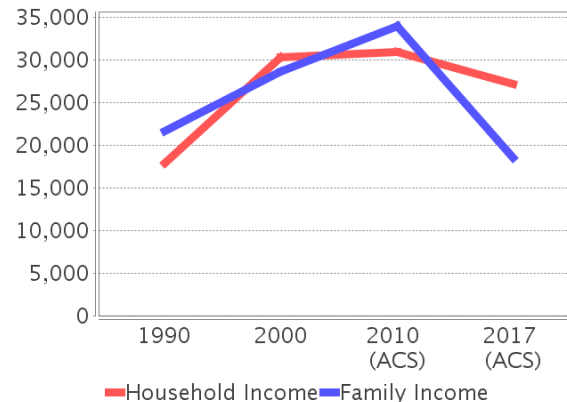


### Disability Trends

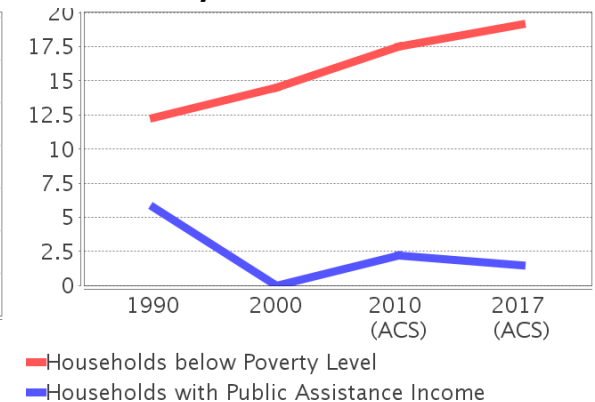
See the Data Sources section below for an explanation about the differences in disability data among the various years.

Description	1990	2000	2010 (ACS)	2017 (ACS)
Population 16 To 64 Years with a disability	23 (10.36%)	49 (19.07%)	(NA)	(NA)
Population 20 To 64 Years with a disability	(NA)	(NA)	(NA)	22 (14.10%)

Income Trends



Poverty and Public Assistance



## Educational Attainment Trends

Age 25 and Over

Description	1990	2000	2010 (ACS)	2017 (ACS)
Less than 9th Grade	30 (14.35%)	8 (3.94%)	23 (9.58%)	18 (7.44%)
9th to 12th Grade, No Diploma	58 (27.75%)	51 (25.12%)	40 (16.67%)	25 (10.33%)
High School Graduate or Higher	121 (57.89%)	145 (71.43%)	177 (73.75%)	199 (82.23%)
Bachelor's Degree or Higher	11 (5.26%)	25 (12.32%)	18 (7.50%)	40 (16.53%)

## Language Trends

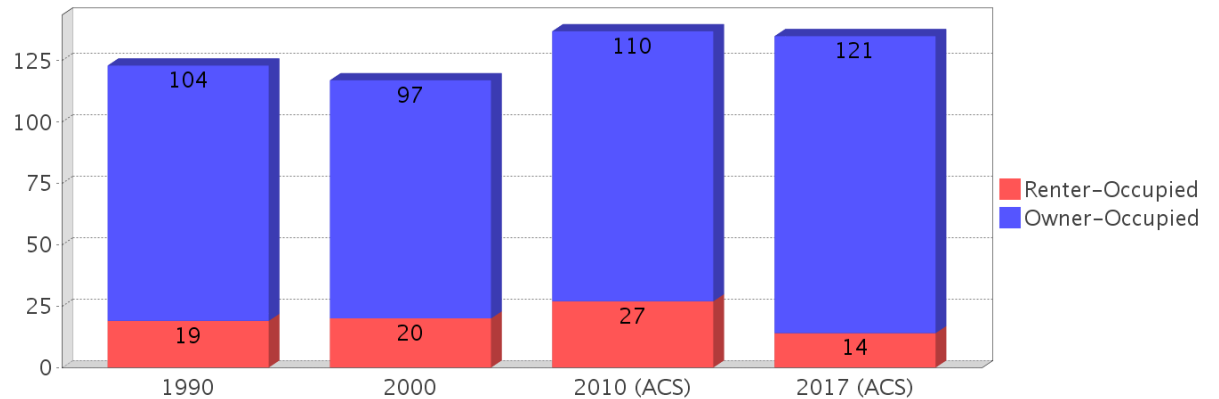
Age 5 and Over

Description	1990	2000	2010 (ACS)	2017 (ACS)
Speaks English Well	5 (1.97%)	2 (0.78%)	8 (2.51%)	4 (1.34%)
Speaks English Not Well	NA (NA)	7 (2.72%)	2 (0.63%)	4 (1.34%)
Speaks English Not at All	NA (NA)	7 (2.72%)	2 (0.63%)	0 (0.00%)
Speaks English Not Well or Not at All	0 (0.00%)	14 (5.45%)	4 (1.25%)	4 (1.34%)

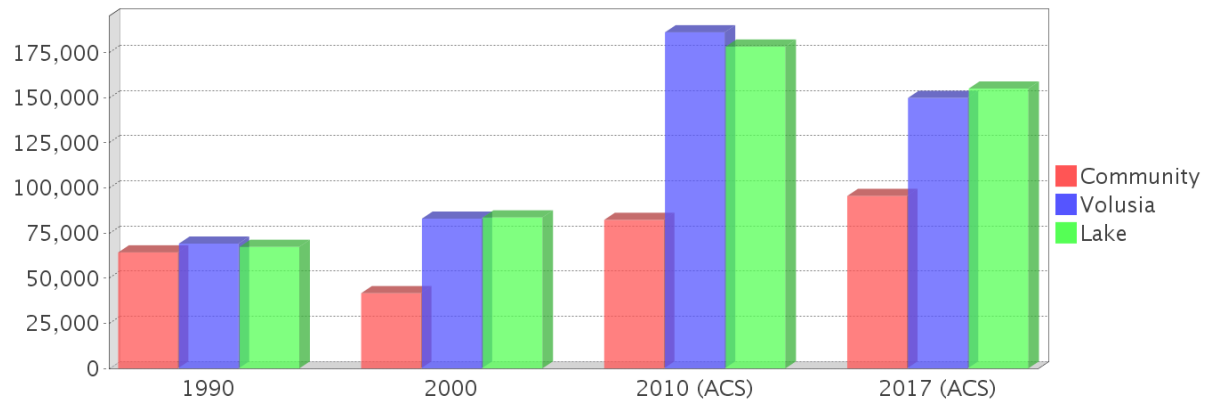
## Housing Trends

Description	1990	2000	2010 (ACS)	2017 (ACS)
Total	208	189	218	212
Units per Acre	0.15	0.13	0.15	0.15
Single-Family Units	54	63	100	91
Multi-Family Units	1	2	1	0
Mobile Home Units	66	123	115	121
Owner-Occupied Units	104	97	110	121
Renter-Occupied Units	19	20	27	14
Vacant Units	85	72	81	76
Median Housing Value	\$64,300	\$41,700	\$82,300	\$95,600
Occupied Housing Units w/No Vehicle	3 (2.44%)	3 (2.56%)	8 (5.84%)	9 (6.62%)

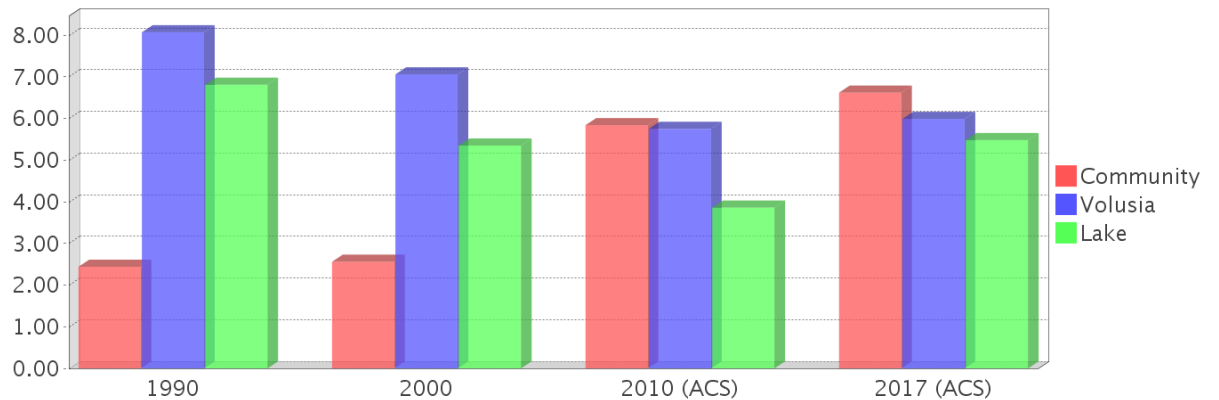
## Housing Tenure



## Median Housing Value Comparison

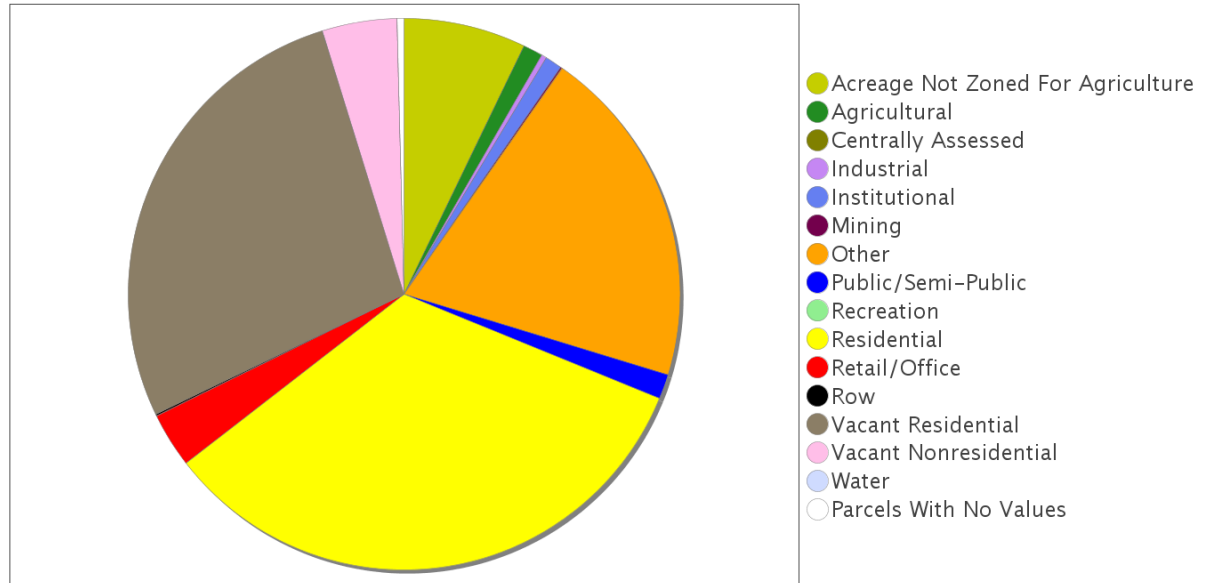


## Occupied Units With No Vehicles Available

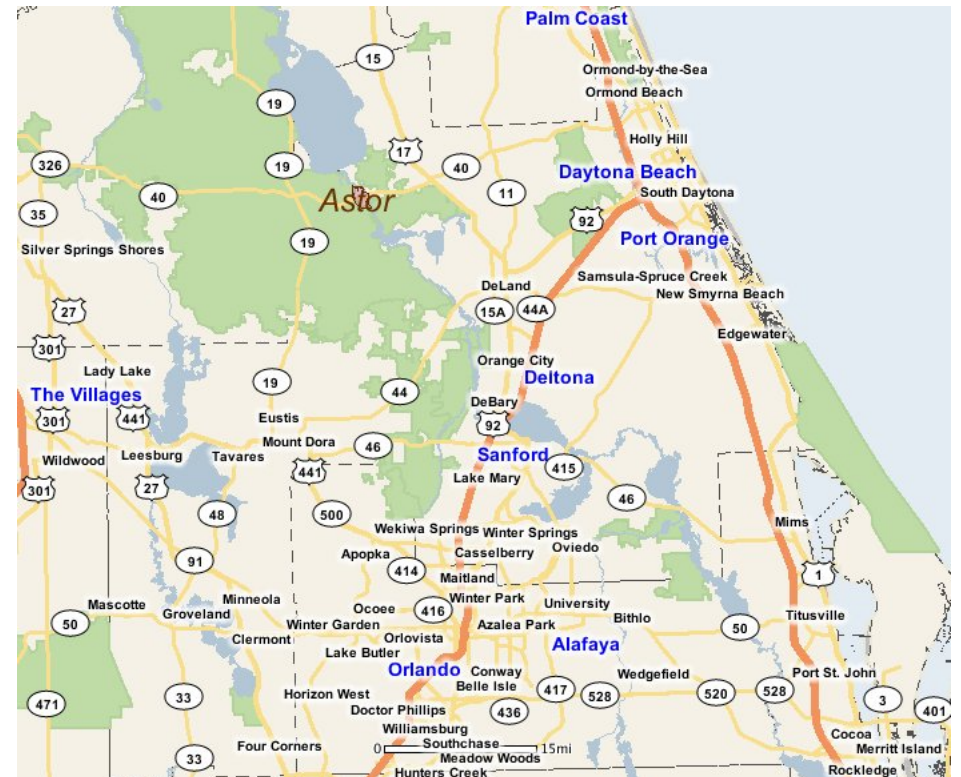
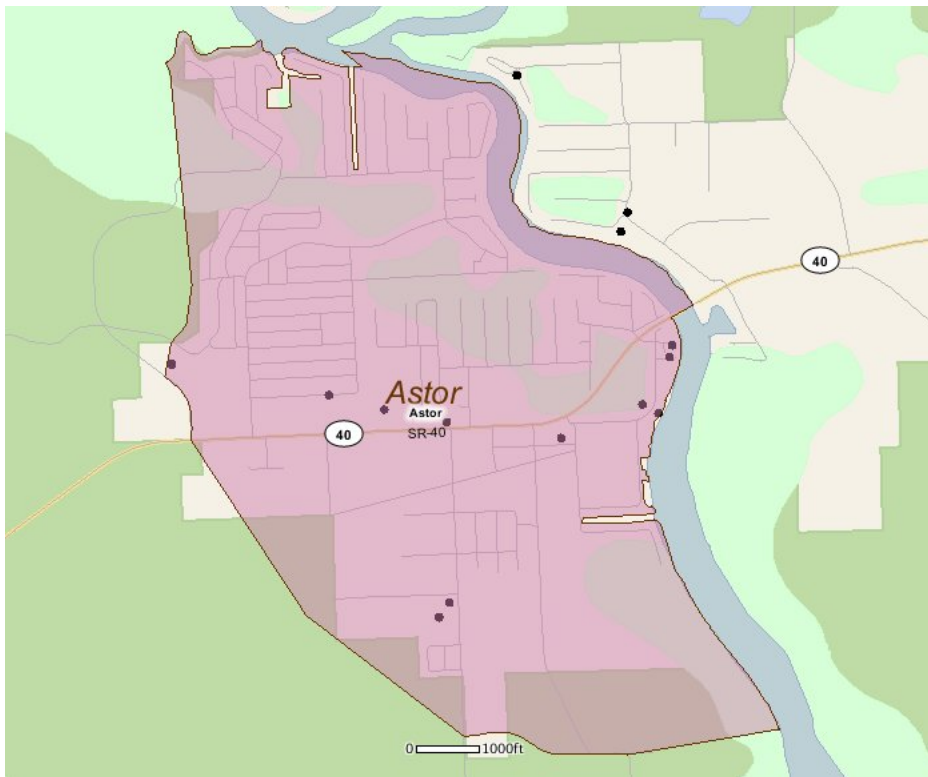


## Existing Land Use

Land Use Type	Acres	Percentage
Acreage Not Zoned For Agriculture	93	5.80%
Agricultural	15	0.94%
Centrally Assessed	0	0.00%
Industrial	4	0.25%
Institutional	13	0.81%
Mining	1	0.06%
Other	260	16.23%
Public/Semi-Public	19	1.19%
Recreation	0	0.00%
Residential	433	27.02%
Retail/Office	42	2.62%
Row	1	0.06%
Vacant Residential	356	22.22%
Vacant Nonresidential	57	3.56%
Water	0	0.00%
Parcels With No Values	5	0.31%



## Location Maps



---

## Community Facilities

The community facilities information below is useful in a variety of ways for environmental evaluations. These community resources should be evaluated for potential sociocultural effects, such as accessibility and relocation potential. The facility types may indicate the types of population groups present in the project study area. Facility staff and leaders can be sources of community information such as who uses the facility and how it is used. Additionally, community facilities are potential public meeting venues.

### Community Centers (Points)

Facility Name	Address	Zip Code
AMVETS POST 9987	55620 VETERANS DR	32102
VFW POST 9986 - ASTOR	55620 VETERANS DR	32102
CHAMBER OF COMMERCE - ASTOR AREA	24102 PANTHER RD	32102

### Cultural Centers (Points)

Facility Name	Address	Zip Code
ASTOR COUNTY LIBRARY	54905 ALCO RD	32102

### Florida Parks and Recreational Facilities (Points)

Facility Name	Address	Zip Code
PEARL STREET BOAT RAMP	PEARL ST	32102
BUTLER STREET BOAT RAMP	BUTLER ST	32102
ASTOR LIONS PARK	54905 ALCO RD	32102

### Government Building

Facility Name	Address	Zip Code
U S POST OFFICE - ASTOR	24433 STATE ROAD 40	32102

### Healthcare Facilities (Geocoded)

Facility Name	Address	Zip Code
BAYCARE	24239 SR 40, UNIT 3	32102

### Law Enforcement Facilities (Points)

Facility Name	Address	Zip Code
LAKE COUNTY SHERIFF'S OFFICE - ASTOR SUBSTATION	55420 FRONT ST	32102

### Mobile Home Parks in Florida

Facility Name	Address	Zip Code
CASTAWAYS ON THE RIVER	25130 BLACKWATER LN	32102

### Religious Centers (Points)

Facility Name	Address	Zip Code
FIRST BAPTIST CHURCH OF ASTOR	24731 ANN STREET	32102

### US Census Places

Facility Name
Astor

### Veteran Organizations and Facilities (Points)

Facility Name	Address	Zip Code
AMVETS POST 9987	55620 VETERANS DRIVE	32102
VFW POST 9986 - ASTOR	55620 VETERANS DRIVE	32102

---

## Block Groups

The following Census Block Groups were used to calculate demographics for this report.

### 1990 Census Block Groups

120690301022, 121270901004, 120690301023, 121270901002

### 2000 Census Block Groups

120690301022, 120690301023

### 2010 Census Block Groups

120690301023, 120690301022

### 2017 Census Block Groups

120690301022, 120690301023

---

## Data Sources

### Area

The geographic area of the community based on a user-specified community boundary or area of interest (AOI) boundary.

### Jurisdiction

Jurisdiction(s) includes local government boundaries that intersect the community or AOI boundary.

### Demographic Data

Demographic data reported under the headings General Population Trends, Race and Ethnicity Trends, Age Trends, Income Trends, Educational Attainment Trends, Language Trends, and Housing Trends is from the U.S. Decennial Census (1990, 2000) and the American Community Survey (ACS) 5-year estimates from 2006-2010 and 2013-2017. The data was gathered at the block group level for user-specified community boundaries and AOIs, and at the county level for counties. Depending on the dataset, the data represents 100% counts (Census Summary File 1) or sample-based information (Census Summary File 3 or ACS).

### About the Census Data:

User-specified community boundaries and AOIs do not always correspond precisely to block group boundaries. In these instances, adjustment of the geographic area and data for affected block groups is required to estimate the actual population. To improve the accuracy of such estimates in the SDR report, the census block group data was adjusted to exclude all census blocks with a population of two or fewer. These areas were eliminated from the corresponding years' block groups. Next, the portion of the block group that lies outside of the community or AOI boundary was removed. The demographics within each block group were then recalculated, assuming an equal area distribution of the population. Note that there may be areas where there is no population.

Use caution when comparing the 100% count data (Decennial Census) to the sample-based data (ACS). In any given year, about one in 40 or 2.5% of U.S. households will receive the ACS questionnaire. Over any five-year period, about one in eight households will receive the questionnaire, as compared to about one in six that received the long form questionnaire for the Decennial Census 2000. (Source: <http://mcdc.missouri.edu/pub/data/acs/Readme.shtml>) The U.S. Census Bureau provides help with this process: <https://www.census.gov/programs-surveys/acs/guidance/comparing-acs-data/2017.html>

Use caution when interpreting changes in Race and Ethnicity over time. Starting with the 2000 Decennial Census, respondents were given a new option of selecting one or more race categories. Also in 2000, the placement of the question about Hispanic origin changed, helping to increase responsiveness to the Hispanic-origin question. Because of these and other changes, the 1990 data on race and ethnicity are not directly comparable with data from later censuses. (Source: <http://www.census.gov/prod/2001pubs/c2kbr01-1.pdf>; <http://www.census.gov/pred/www/rpts/Race%20and%20Ethnicity%20FINAL%20report.pdf>)

The "Minority" calculations are derived from Census and ACS data using both the race and ethnicity responses. On this report, "Minority" refers to individuals who list a race other than White and/or list their ethnicity as Hispanic/Latino. In other words, people who are multi-racial, any single race other than White, or Hispanic/Latino of any race are considered minorities.

Disability data is not included in the 2010 Decennial Census, or the 2006-2010 ACS. This data is available in the 2013-2017 ACS.

Because of changes made to the Census and ACS questions between 1990 and 2017, disability variables should not be compared from year to year. For example: 1) With the 1990 data the disabilities are listed as a "work disability" while this distinction is not made with 2000 or 2017 ACS data; 2) The 2017 ACS data includes the institutionalized population (e.g. persons in prisons and group homes), while this population is not included in 1990 or 2000; 3) the age groupings changed over the years.

Please take the following two concerns into account when viewing this data: 1) With the 1990 data the disabilities are listed as a "work disability" while this distinction is not made with 2000 or 2017 ACS data; 2) The 2017 ACS data includes the institutionalized population (e.g. persons in prisons and group homes), while this population is not included in 1990 or 2000.

The category Bachelor's Degree or Higher under the heading Educational Attainment Trends is a subset of the category High School Graduate or Higher.

Income of households. This includes the income of the householder and all other individuals 15 years old and over in the household, whether they are related to the householder or not. Because many households consist of only one person, average household income is usually less than average family income.

Income of families. In compiling statistics on family income, the incomes of all members 15 years old and over related to the householder are summed and treated as a single amount.

Age Trends median age for 1990 is not available.

### **Land Use Data**

The Land Use information Indicates acreages and percentages for the generalized land use types used to group parcel-specific, existing land use assigned by the county property appraiser office according to the Florida Department of Revenue land use codes.

### **Community Facilities Data**

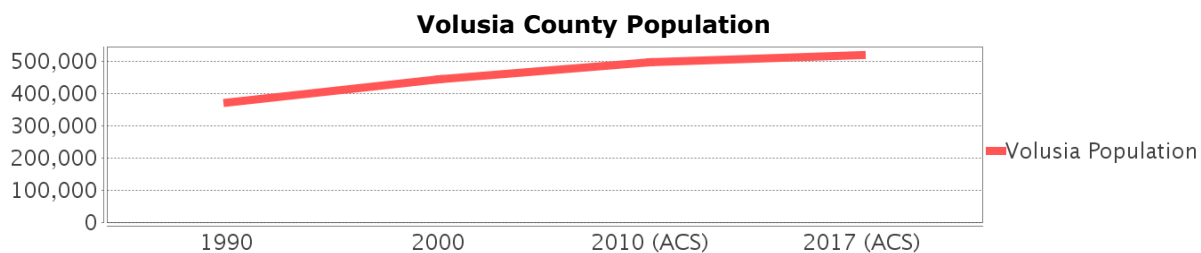
- Assisted Rental Housing Units - Identifies multifamily rental developments that receive funding assistance under federal, state, and local government programs to offer affordable housing as reported by the Shimberg Center for Housing Studies, University of Florida.
- Mobile Home Parks - Identifies approved or acknowledged mobile home parks reported by the Florida Department of Business and Professional Regulation and Florida Department of Health.
- Migrant Camps - Identifies migrant labor camp facilities inspected by the Florida Department of Health.
- Group Care Facilities - Identifies group care facilities inspected by the Florida Department of Health.

- Community Center and Fraternal Association Facilities - Identifies facilities reported by multiple sources.
- Law Enforcement Correctional Facilities - Identifies facilities reported by multiple sources.
- Cultural Centers - Identifies cultural centers including organizations, buildings, or complexes that promote culture and arts (e.g., aquariums and zoological facilities; arboreta and botanical gardens; dinner theaters; drive-ins; historical places and services; libraries; motion picture theaters; museums and art galleries; performing arts centers; performing arts theaters; planetariums; studios and art galleries; and theater producers stage facilities) reported by multiple sources.
- Fire Department and Rescue Station Facilities - Identifies facilities reported by multiple sources.
- Government Buildings - Identifies local, state, and federal government buildings reported by multiple sources.
- Health Care Facilities - Identifies health care facilities including abortion clinics, dialysis clinics, medical doctors, nursing homes, osteopaths, state laboratories/clinics, and surgicenters/walk-in clinics reported by the Florida Department of Health.
- Hospital Facilities - Identifies hospital facilities reported by multiple sources.
- Law Enforcement Facilities - Identifies law enforcement facilities reported by multiple sources.
- Parks and Recreational Facilities - Identifies parks and recreational facilities reported by multiple sources.
- Religious Center Facilities - Identifies religious centers including churches, temples, synagogues, mosques, chapels, centers, and other types of religious facilities reported by multiple sources.
- Private and Public Schools - Identifies private and public schools reported by multiple sources.
- Social Service Centers - Identifies social service centers reported by multiple sources.
- Veteran Organizations and Facilities

# Volusia County Demographic Profile

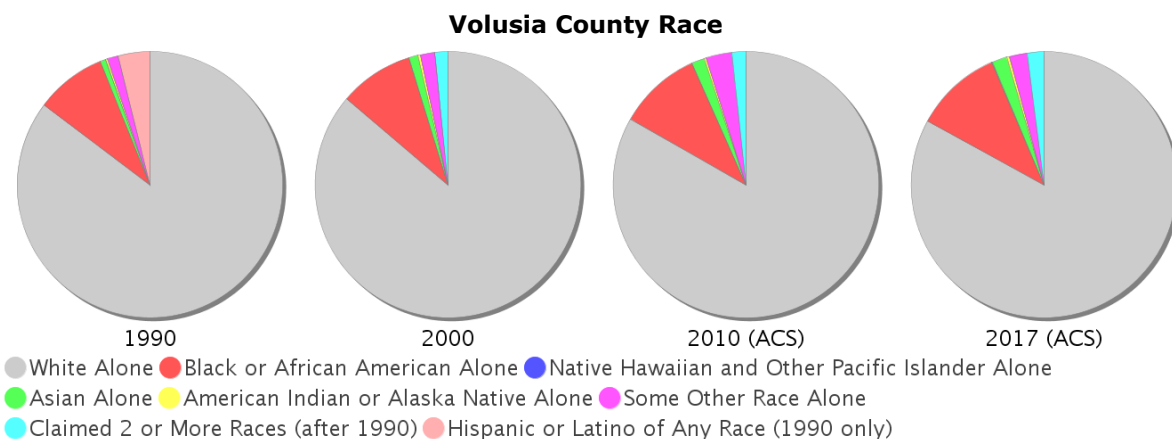
## General Population Trends - Volusia

Description	1990	2000	2010 (ACS)	2017 (ACS)
Total Population	370,712	443,343	496,053	518,660
Total Households	153,416	184,723	200,346	209,885
Average Persons per Acre	0.474	0.566	0.634	0.663
Average Persons per Household	2.416	2.32	2.00	2.42
Average Persons per Family	2.858	2.895	3.069	3.145
Males	179,481	215,115	242,472	252,651
Females	191,231	228,228	253,581	266,009



## Race and Ethnicity Trends - Volusia

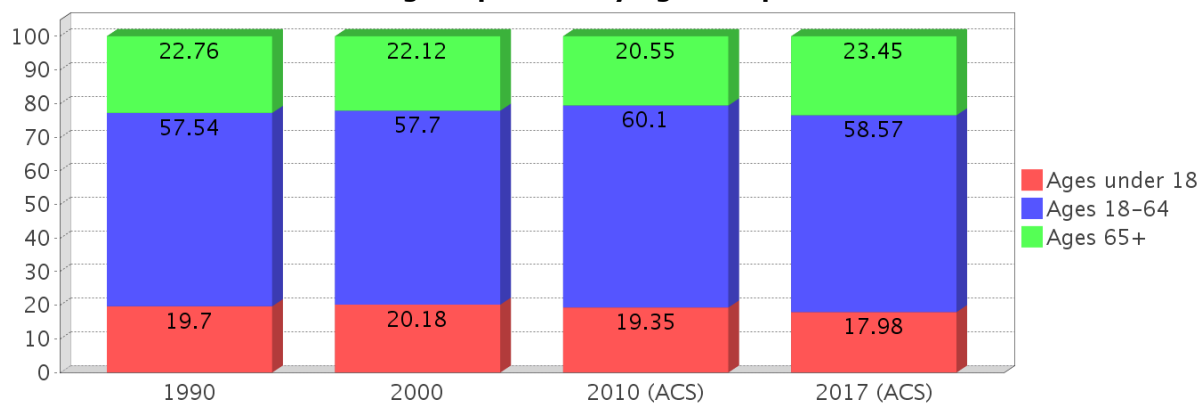
Description	1990	2000	2010 (ACS)	2017 (ACS)
White Alone	328,530 (88.62%)	382,019 (86.17%)	412,897 (83.24%)	430,152 (82.94%)
Black or African American Alone	33,455 (9.02%)	40,116 (9.05%)	49,934 (10.07%)	55,230 (10.65%)
Native Hawaiian and Other Pacific Islander Alone	(NA)	145 (0.03%)	128 (0.03%)	198 (0.04%)
Asian Alone	2,633 (0.71%)	4,812 (1.09%)	7,615 (1.54%)	9,335 (1.80%)
American Indian or Alaska Native Alone	915 (0.25%)	1,364 (0.31%)	1,348 (0.27%)	1,920 (0.37%)
Some Other Race Alone	5,073 (1.37%)	8,013 (1.81%)	15,487 (3.12%)	11,110 (2.14%)
Claimed 2 or More Races	(NA)	6,874 (1.55%)	8,644 (1.74%)	10,715 (2.07%)
Hispanic or Latino of Any Race	14,840 (4.00%)	29,273 (6.60%)	52,754 (10.63%)	66,743 (12.87%)
Not Hispanic or Latino	355,872 (96.00%)	414,070 (93.40%)	443,299 (89.37%)	451,917 (87.13%)
Minority	121,611 (32.80%)	80,045 (18.05%)	121,611 (24.52%)	140,495 (27.09%)



### Age Trends - Volusia

Description	1990	2000	2010 (ACS)	2017 (ACS)
Under Age 5	5.73%	4.91%	5.01%	4.75%
Ages 5-17	13.97%	15.26%	14.34%	13.24%
Ages 18-21	5.64%	5.18%	5.59%	5.02%
Ages 22-29	11.17%	8.08%	8.75%	9.43%
Ages 30-39	14.35%	12.92%	10.72%	10.10%
Ages 40-49	11.13%	14.27%	13.88%	11.73%
Ages 50-64	15.26%	17.25%	21.16%	22.29%
Age 65 and Over	22.76%	22.12%	20.55%	23.45%
-Ages 65-74	13.30%	11.36%	10.44%	12.96%
-Ages 75-84	7.32%	8.22%	7.40%	7.25%
-Age 85 and Over	2.14%	2.53%	2.71%	3.23%
Median Age	NA	42	44	46

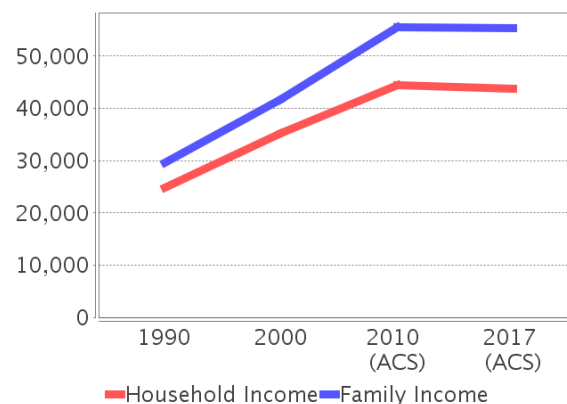
Percentage Population by Age Group - Volusia



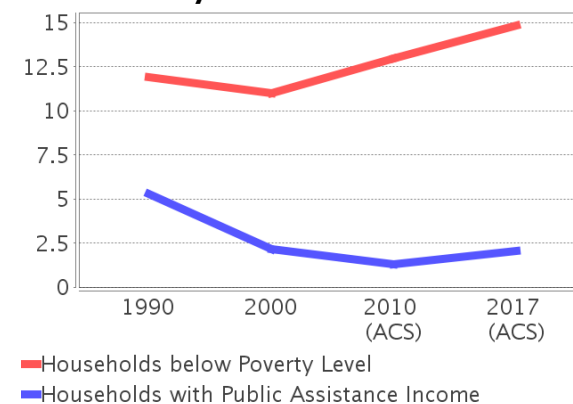
### Income Trends - Volusia

Description	1990	2000	2010 (ACS)	2017 (ACS)
Median Household Income	\$24,818	\$35,219	\$44,400	\$43,838
Median Family Income	\$29,563	\$41,767	\$55,569	\$55,408
Population below Poverty Level	12.14%	11.62%	13.81%	16.07%
Households below Poverty Level	11.92%	11.01%	12.96%	14.83%
Households with Public Assistance Income	5.27%	2.14%	1.31%	2.08%

Income Trends



Poverty and Public Assistance



### Disability Trends - Volusia

See the Data Sources section below for an explanation about the differences in disability data among the various years.

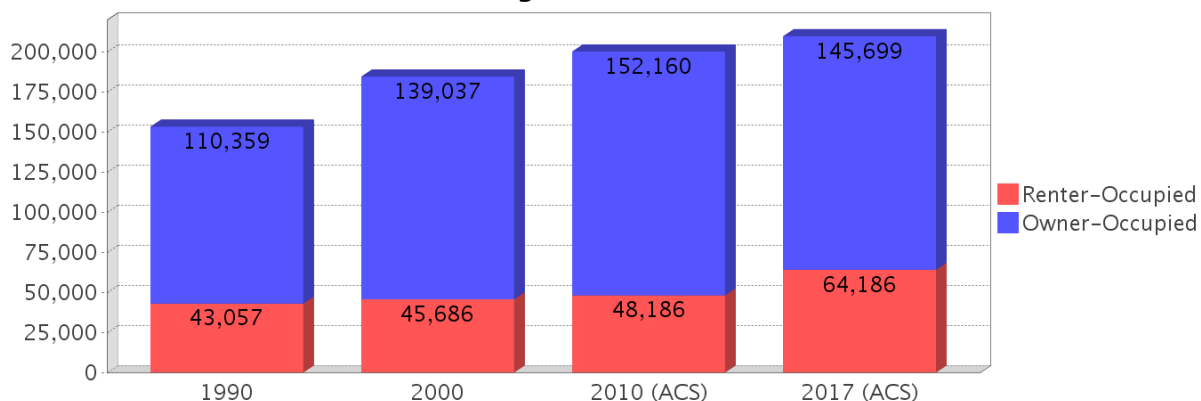
Description	1990	2000	2010 (ACS)	2017 (ACS)
Population 16 To 64 Years with a disability	22,474 (7.51%)	56,400 (13.62%)	NA (NA)	NA (NA)
Population 20 To 64 Years with a disability	NA (NA)	NA (NA)	NA (NA)	38,693 (13.44%)

## Educational Attainment Trends - Volusia

Age 25 and Over

Description	1990	2000	2010 (ACS)	2017 (ACS)
Less than 9th Grade	20,256 (7.69%)	15,226 (4.80%)	12,871 (3.62%)	10,903 (2.86%)
9th to 12th Grade, No Diploma	44,441 (16.88%)	41,756 (13.16%)	32,169 (9.04%)	28,649 (7.51%)
High School Graduate or Higher	198,566 (75.42%)	260,243 (82.04%)	310,729 (87.34%)	341,710 (89.63%)
Bachelor's Degree or Higher	38,946 (14.79%)	55,961 (17.64%)	74,669 (20.99%)	86,516 (22.69%)

## Housing Tenure - Volusia



## Language Trends - Volusia

Age 5 and Over

Description	1990	2000	2010 (ACS)	2017 (ACS)
Speaks English Well	6,390 (1.83%)	9,959 (2.36%)	12,823 (2.72%)	12,851 (2.60%)
Speaks English Not Well	NA	5,351 (1.27%)	6,678 (1.42%)	5,667 (1.15%)
Speaks English Not at All	NA	1,493 (0.35%)	2,075 (0.44%)	1,789 (0.36%)
Speaks English Not Well or Not at All	4,999 (1.43%)	6,844 (1.62%)	8,753 (1.86%)	7,456 (1.51%)

## Housing Trends - Volusia

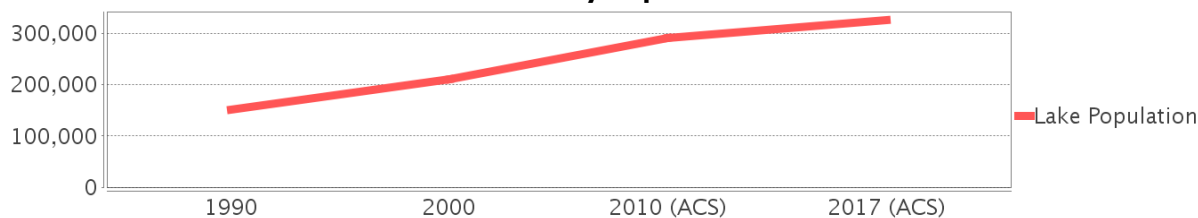
Description	1990	2000	2010 (ACS)	2017 (ACS)
Total	180,972	211,938	251,549	258,019
Units per Acre	0.231	0.271	0.321	0.33
Single-Family Units	105,476	140,866	174,503	178,310
Multi-Family Units	29,492	45,891	53,123	57,216
Mobile Home Units	17,024	24,272	23,686	22,355
Owner-Occupied Units	110,359	139,037	152,160	145,699
Renter-Occupied Units	43,057	45,686	48,186	64,186
Vacant Units	27,556	27,215	51,203	48,134
Median Housing Value	\$69,200	\$83,000	\$186,300	\$149,900
Occupied Housing Units w/No Vehicle	12,388 (8.07%)	13,049 (7.06%)	11,510 (5.75%)	12,580 (5.99%)

# Lake County Demographic Profile

## General Population Trends - Lake

Description	1990	2000	2010 (ACS)	2017 (ACS)
Total Population	152,104	210,528	291,671	326,215
Total Households	63,616	88,413	117,544	127,441
Average Persons per Acre	0.206	0.284	0.394	0.441
Average Persons per Household	2.391	2.339	2.00	2.53
Average Persons per Family	2.793	2.81	2.991	3.147
Males	72,929	101,901	141,653	157,897
Females	79,175	108,627	150,018	168,318

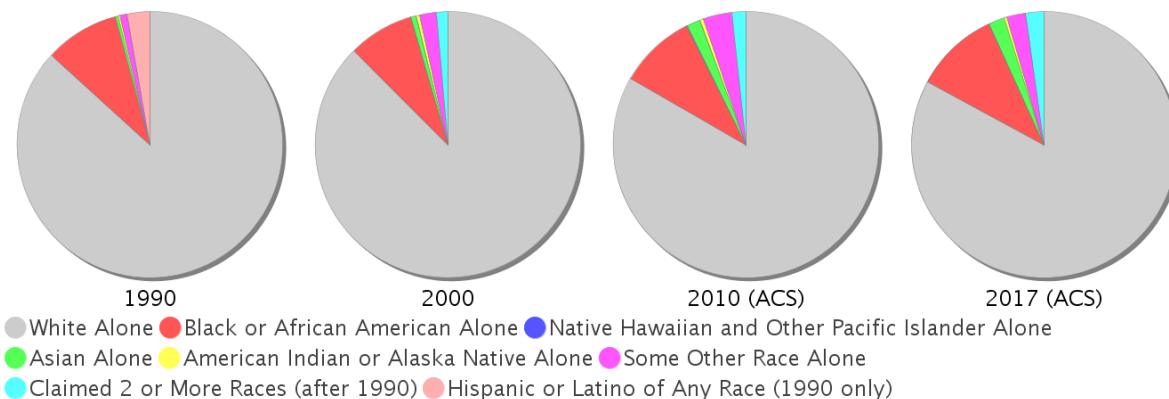
### Lake County Population



## Race and Ethnicity Trends - Lake

Description	1990	2000	2010 (ACS)	2017 (ACS)
White Alone	135,619 (89.16%)	184,147 (87.47%)	242,871 (83.27%)	270,409 (82.89%)
Black or African American Alone	14,191 (9.33%)	16,878 (8.02%)	27,189 (9.32%)	33,458 (10.26%)
Native Hawaiian and Other Pacific Islander Alone	(NA)	44 (0.02%)	243 (0.08%)	230 (0.07%)
Asian Alone	537 (0.35%)	1,422 (0.68%)	4,986 (1.71%)	6,223 (1.91%)
American Indian or Alaska Native Alone	384 (0.25%)	810 (0.38%)	1,123 (0.39%)	1,234 (0.38%)
Some Other Race Alone	1,344 (0.88%)	4,293 (2.04%)	10,271 (3.52%)	7,444 (2.28%)
Claimed 2 or More Races	(NA)	2,934 (1.39%)	4,988 (1.71%)	7,217 (2.21%)
Hispanic or Latino of Any Race	4,305 (2.83%)	11,836 (5.62%)	33,115 (11.35%)	47,009 (14.41%)
Not Hispanic or Latino	147,799 (97.17%)	198,692 (94.38%)	258,556 (88.65%)	279,206 (85.59%)
Minority	75,687 (49.76%)	33,261 (15.80%)	75,687 (25.95%)	94,292 (28.90%)

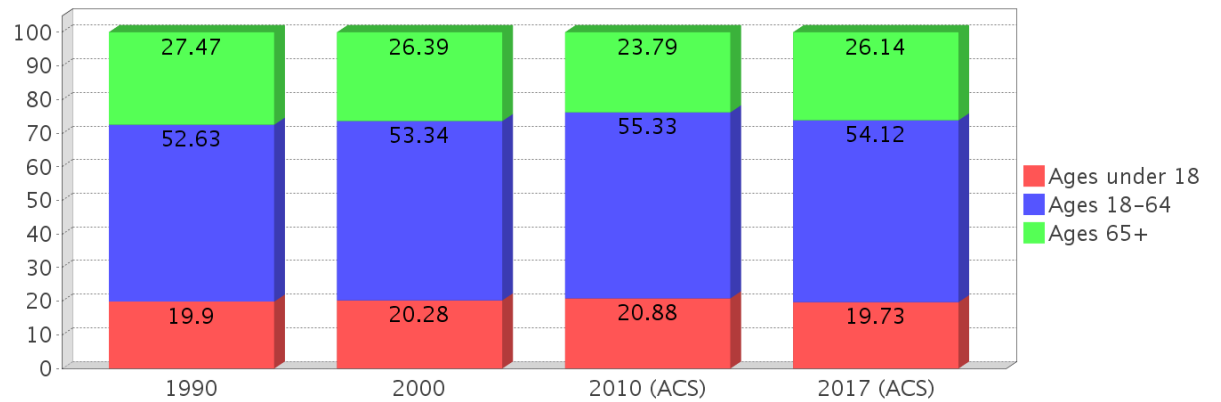
### Lake County Race



### Age Trends - Lake

Description	1990	2000	2010 (ACS)	2017 (ACS)
Under Age 5	5.64%	5.21%	5.60%	5.02%
Ages 5-17	14.26%	15.07%	15.28%	14.71%
Ages 18-21	4.03%	3.43%	3.80%	3.93%
Ages 22-29	8.61%	6.95%	7.60%	8.12%
Ages 30-39	12.30%	12.57%	10.78%	10.16%
Ages 40-49	10.46%	12.79%	13.37%	12.10%
Ages 50-64	17.24%	17.60%	19.77%	19.82%
Age 65 and Over	27.47%	26.39%	23.79%	26.14%
-Ages 65-74	16.20%	14.39%	13.16%	14.26%
-Ages 75-84	9.08%	9.23%	8.15%	8.99%
-Age 85 and Over	2.19%	2.77%	2.48%	2.89%
Median Age	NA	45	45	47

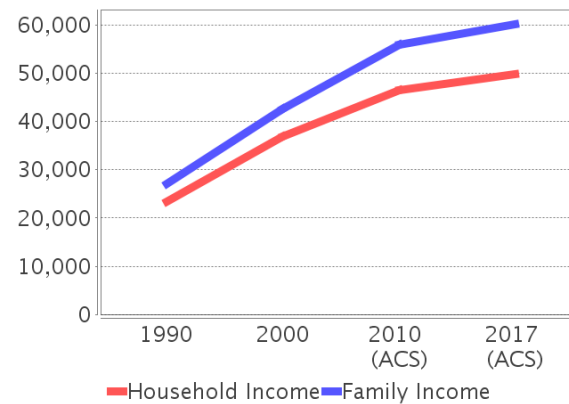
Percentage Population by Age Group - Lake



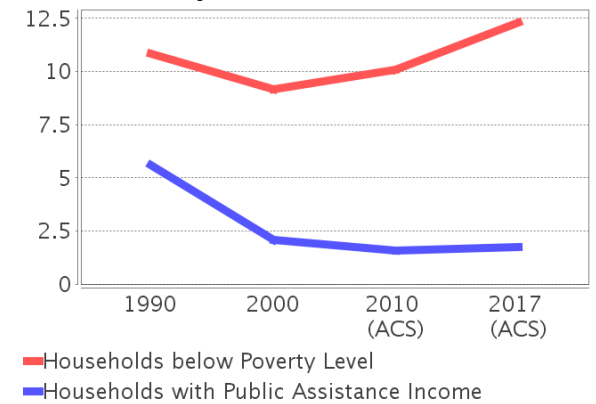
### Income Trends - Lake

Description	1990	2000	2010 (ACS)	2017 (ACS)
Median Household Income	\$23,395	\$36,903	\$46,477	\$49,734
Median Family Income	\$27,149	\$42,577	\$55,935	\$60,130
Population below Poverty Level	11.03%	9.63%	11.04%	12.84%
Households below Poverty Level	10.83%	9.15%	10.09%	12.29%
Households with Public Assistance Income	5.62%	2.09%	1.60%	1.74%

Income Trends



Poverty and Public Assistance



### Disability Trends - Lake

See the Data Sources section below for an explanation about the differences in disability data among the various years.

Description	1990	2000	2010 (ACS)	2017 (ACS)
Population 16 To 64 Years with a disability	8,877 (7.18%)	27,445 (13.98%)	NA (NA)	NA (NA)
Population 20 To 64 Years with a disability	NA (NA)	NA (NA)	NA (NA)	21,448 (12.76%)

## Educational Attainment Trends - Lake

Age 25 and Over

Description	1990	2000	2010 (ACS)	2017 (ACS)
Less than 9th Grade	11,447 (10.22%)	8,889 (5.71%)	8,297 (3.92%)	8,717 (3.64%)
9th to 12th Grade, No Diploma	21,453 (19.16%)	22,593 (14.52%)	19,503 (9.21%)	18,523 (7.74%)
High School Graduate or Higher	79,082 (70.62%)	124,090 (79.76%)	183,884 (86.87%)	212,138 (88.62%)
Bachelor's Degree or Higher	14,277 (12.75%)	25,811 (16.59%)	42,895 (20.26%)	53,520 (22.36%)

## Language Trends - Lake

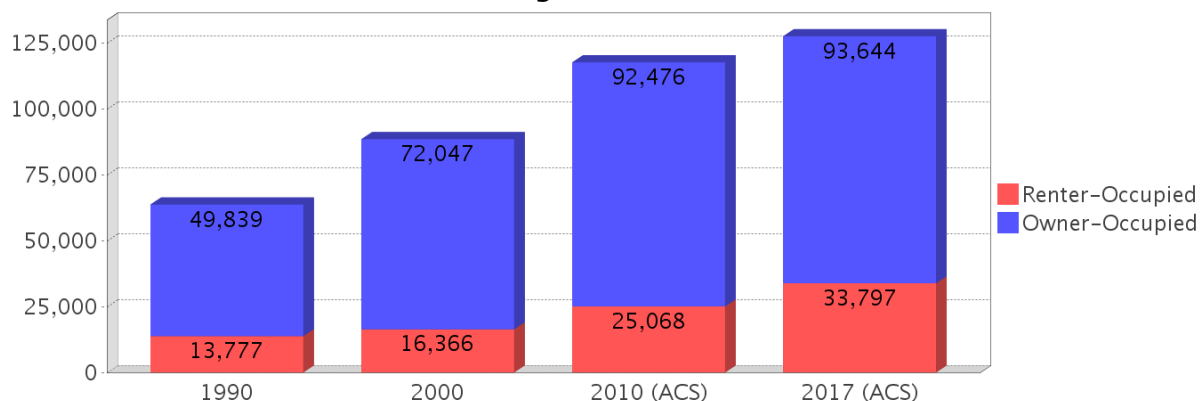
Age 5 and Over

Description	1990	2000	2010 (ACS)	2017 (ACS)
Speaks English Well	1,789 (1.24%)	2,875 (1.44%)	6,005 (2.18%)	7,845 (2.53%)
Speaks English Not Well	NA (NA)	2,194 (1.10%)	4,180 (1.52%)	3,993 (1.29%)
Speaks English Not at All	NA (NA)	845 (0.42%)	1,448 (0.53%)	1,332 (0.43%)
Speaks English Not Well or Not at All	1,337 (0.93%)	3,039 (1.52%)	5,628 (2.04%)	5,325 (1.72%)

## Housing Trends - Lake

Description	1990	2000	2010 (ACS)	2017 (ACS)
Total	75,707	102,830	141,568	151,295
Units per Acre	0.102	0.139	0.191	0.204
Single-Family Units	35,354	61,494	93,896	101,792
Multi-Family Units	7,020	10,107	15,419	19,564
Mobile Home Units	20,828	30,549	32,032	29,421
Owner-Occupied Units	49,839	72,047	92,476	93,644
Renter-Occupied Units	13,777	16,366	25,068	33,797
Vacant Units	12,091	14,417	24,024	23,854
Median Housing Value	\$67,400	\$83,700	\$178,400	\$155,100
Occupied Housing Units w/No Vehicle	4,335 (6.81%)	4,733 (5.35%)	4,533 (3.86%)	6,990 (5.48%)

## Housing Tenure - Lake



---

## County Data Sources

Demographic data reported is from the U.S. Decennial Census (1990, 2000) and the American Community Survey (ACS) 5-year estimates from 2006-2010 and 2013-2017. The data was gathered at the county level. Depending on the dataset, the data represents 100% counts (Census Summary File 1) or sample-based information (Census Summary File 3 or ACS).

### About the Census Data:

Use caution when comparing the 100% count data (Decennial Census) to the sample-based data (ACS). In any given year, about one in 40 or 2.5% of U.S. households will receive the ACS questionnaire. Over any five-year period, about one in eight households will receive the questionnaire, as compared to about one in six that received the long form questionnaire for the Decennial Census 2000. (Source: <http://mcdc.missouri.edu/pub/data/acs/Readme.shtml>) The U.S. Census Bureau provides help with this process:

<https://www.census.gov/programs-surveys/acs/guidance/comparing-acs-data/2017.html>

Use caution when interpreting changes in Race and Ethnicity over time. Starting with the 2000 Decennial Census, respondents were given a new option of selecting one or more race categories. Also in 2000, the placement of the question about Hispanic origin changed, helping to increase responsiveness to the Hispanic-origin question. Because of these and other changes, the 1990 data on race and ethnicity are not directly comparable with data from later censuses. (Source: <http://www.census.gov/prod/2001pubs/c2kbr01-1.pdf>; <http://www.census.gov/pred/www/rpts/Race%20and%20Ethnicity%20FINAL%20report.pdf>)

The "Minority" calculations are derived from Census and ACS data using both the race and ethnicity responses. On this report, "Minority" refers to individuals who list a race other than White and/or list their ethnicity as Hispanic/Latino. In other words, people who are multi-racial, any single race other than White, or Hispanic/Latino of any race are considered minorities.

Disability data is not included in the 2010 Decennial Census, or the 2006-2010 ACS. This data is available in the 2013-2017 ACS.

Because of changes made to the Census and ACS questions between 1990 and 2017, disability variables should not be compared from year to year. For example: 1) With the 1990 data the disabilities are listed as a "work disability" while this distinction is not made with 2000 or 2017 ACS data; 2) The 2017 ACS data includes the institutionalized population (e.g. persons in prisons and group homes), while this population is not included in 1990 or 2000; 3) the age groupings changed over the years.

Please take the following two concerns into account when viewing this data: 1) With the 1990 data the disabilities are listed as a "work disability" while this distinction is not made with 2000 or 2017 ACS data; 2) The 2017 ACS data includes the institutionalized population (e.g. persons in prisons and group homes), while this population is not included in 1990 or 2000.

source:

<https://www.census.gov/people/disability/methodology/acs.html>

<https://www.census.gov/population/www/cen2000/90vs00/index.html>

The category Bachelor's Degree or Higher under the heading Educational Attainment Trends is a subset of the category High School Graduate or Higher.

---

## Metadata

- Community and Fraternal Centers [https://etdmpub.florida-estat.org/metadata/gc\\_communitycenter.htm](https://etdmpub.florida-estat.org/metadata/gc_communitycenter.htm)
- Correctional Facilities in Florida [https://etdmpub.florida-estat.org/metadata/gc\\_correctional.htm](https://etdmpub.florida-estat.org/metadata/gc_correctional.htm)
- Cultural Centers in Florida [https://etdmpub.florida-estat.org/metadata/gc\\_culturecenter.htm](https://etdmpub.florida-estat.org/metadata/gc_culturecenter.htm)
- Fire Department and Rescue Station Facilities in Florida [https://etdmpub.florida-estat.org/metadata/gc\\_firestat.htm](https://etdmpub.florida-estat.org/metadata/gc_firestat.htm)
- Local, State, and Federal Government Buildings in Florida [https://etdmpub.florida-estat.org/metadata/gc\\_govbuild.htm](https://etdmpub.florida-estat.org/metadata/gc_govbuild.htm)
- Florida Health Care Facilities [https://etdmpub.florida-estat.org/metadata/gc\\_health.htm](https://etdmpub.florida-estat.org/metadata/gc_health.htm)
- Hospital Facilities in Florida [https://etdmpub.florida-estat.org/metadata/gc\\_hospitals.htm](https://etdmpub.florida-estat.org/metadata/gc_hospitals.htm)
- Law Enforcement Facilities in Florida [https://etdmpub.florida-estat.org/metadata/gc\\_lawenforce.htm](https://etdmpub.florida-estat.org/metadata/gc_lawenforce.htm)
- Florida Parks and Recreational Facilities [https://etdmpub.florida-estat.org/metadata/gc\\_parks.htm](https://etdmpub.florida-estat.org/metadata/gc_parks.htm)
- Religious Centers [https://etdmpub.florida-estat.org/metadata/gc\\_religion.htm](https://etdmpub.florida-estat.org/metadata/gc_religion.htm)
- Florida Public and Private Schools [https://etdmpub.florida-estat.org/metadata/gc\\_schools.htm](https://etdmpub.florida-estat.org/metadata/gc_schools.htm)
- Social Service Centers [https://etdmpub.florida-estat.org/metadata/gc\\_socialservice.htm](https://etdmpub.florida-estat.org/metadata/gc_socialservice.htm)
- Assisted Rental Housing Units in Florida [https://etdmpub.florida-estat.org/metadata/gc\\_assisted\\_housing.htm](https://etdmpub.florida-estat.org/metadata/gc_assisted_housing.htm)
- Group Care Facilities <https://etdmpub.florida-estat.org/metadata/groupcare.htm>
- Mobile Home Parks in Florida [https://etdmpub.florida-estat.org/metadata/gc\\_mobilehomes.htm](https://etdmpub.florida-estat.org/metadata/gc_mobilehomes.htm)
- Migrant Camps in Florida <https://etdmpub.florida-estat.org/metadata/migrant.htm>
- Veteran Organizations and Facilities [https://etdmpub.florida-estat.org/metadata/gc\\_veterans.htm](https://etdmpub.florida-estat.org/metadata/gc_veterans.htm)
- Generalized Land Use - Florida DOT District 5 [https://etdmpub.florida-estat.org/metadata/d5\\_lu\\_gen.htm](https://etdmpub.florida-estat.org/metadata/d5_lu_gen.htm)
- Census Block Groups in Florida [https://etdmpub.florida-estat.org/metadata/e2\\_cenacs\\_cci.htm](https://etdmpub.florida-estat.org/metadata/e2_cenacs_cci.htm)
- 1990 Census Block Groups in Florida [https://etdmpub.florida-estat.org/metadata/e2\\_cenblkgrp\\_1990\\_cci.htm](https://etdmpub.florida-estat.org/metadata/e2_cenblkgrp_1990_cci.htm)
- 2000 Census Block Groups in Florida [https://etdmpub.florida-estat.org/metadata/e2\\_cenblkgrp\\_2000\\_cci.htm](https://etdmpub.florida-estat.org/metadata/e2_cenblkgrp_2000_cci.htm)
- 2010 Census Block Groups in Florida [https://etdmpub.florida-estat.org/metadata/e2\\_cenblkgrp\\_2010\\_cci.htm](https://etdmpub.florida-estat.org/metadata/e2_cenblkgrp_2010_cci.htm)