

Sociocultural Data Report

Bellview

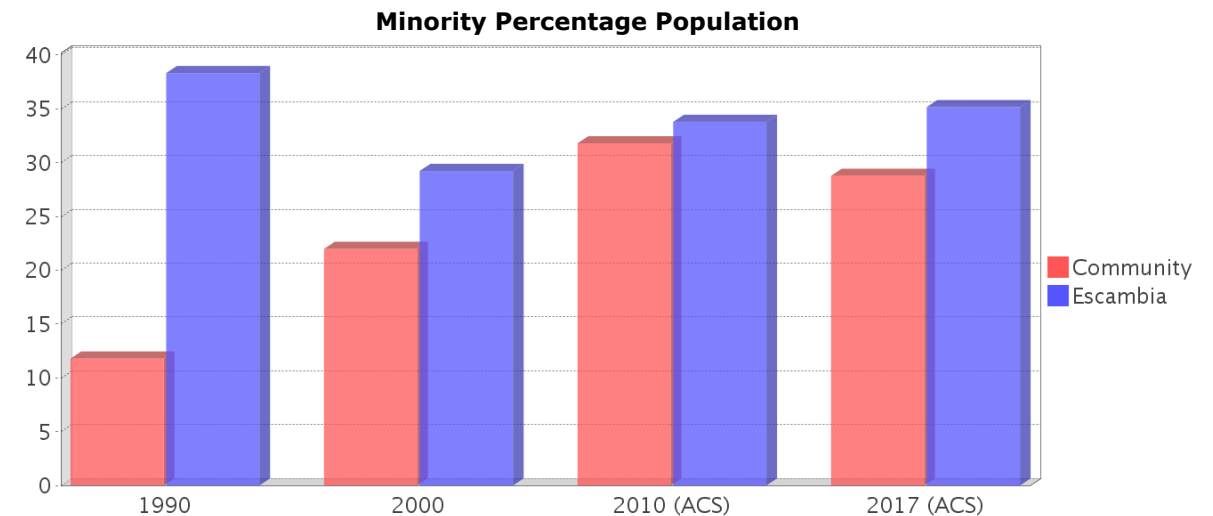
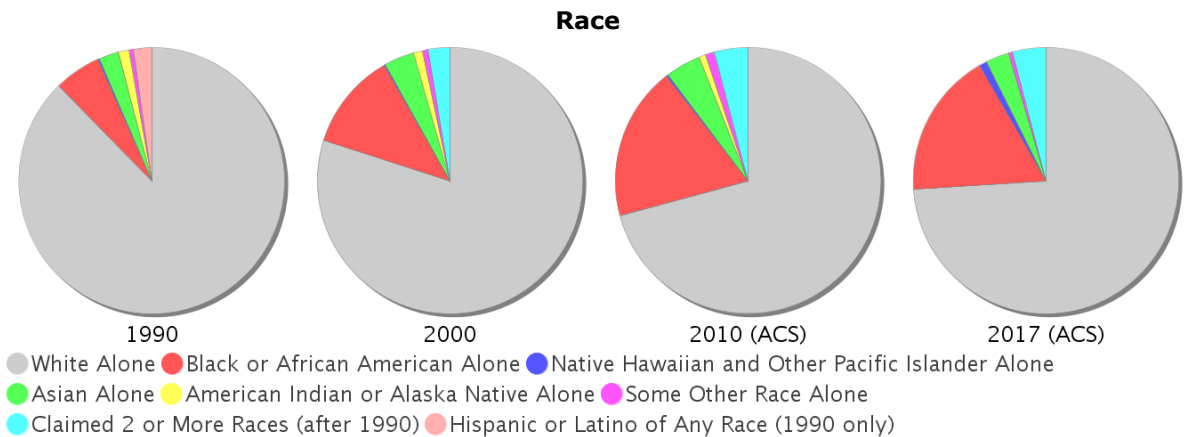
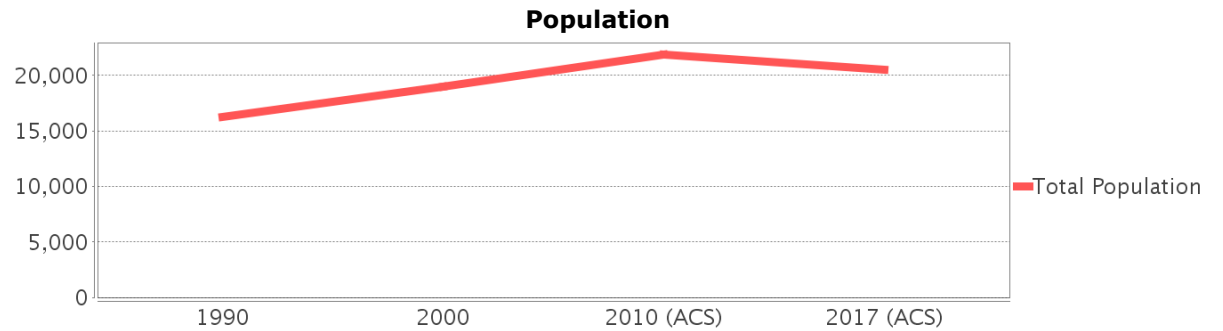
Area: 11,779 square miles
Jurisdiction(s): Cities: NA
 Counties: Escambia

General Population Trends

Description	1990	2000	2010 (ACS)	2017 (ACS)
Total Population	16,288	18,991	21,868	20,491
Total Households	5,805	7,213	8,454	8,292
Average Persons per Acre	3.34	3.31	3.55	3.40
Average Persons per Household	2.80	2.66	2.63	2.42
Average Persons per Family	3.19	3.18	3.00	3.14
Males	8,002	9,137	10,485	10,061
Females	8,286	9,853	11,383	10,431

Race and Ethnicity Trends

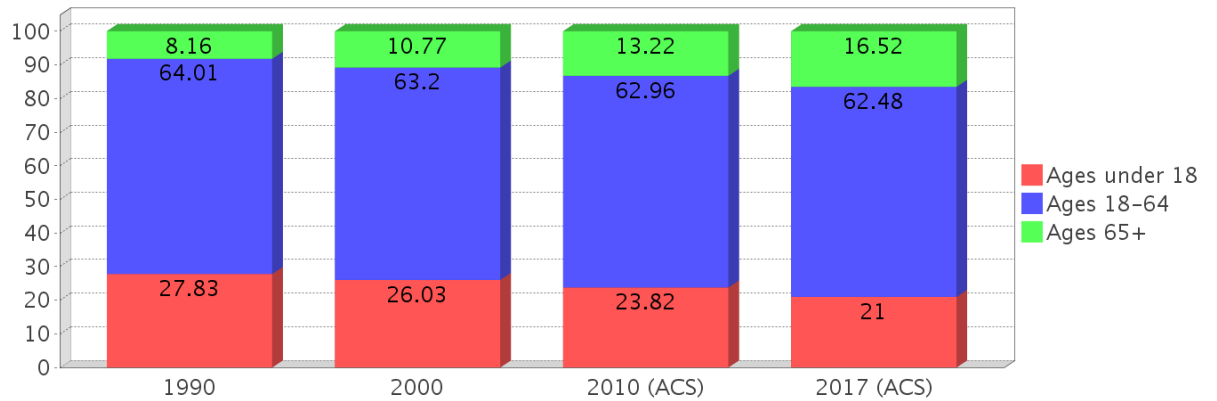
Description	1990	2000	2010 (ACS)	2017 (ACS)
White Alone	14,606 (89.67%)	15,173 (79.90%)	15,481 (70.79%)	15,152 (73.94%)
Black or African American Alone	944 (5.80%)	2,246 (11.83%)	4,082 (18.67%)	3,633 (17.73%)
Native Hawaiian and Other Pacific Islander Alone	32 (0.20%)	33 (0.17%)	51 (0.23%)	188 (0.92%)
Asian Alone	406 (2.49%)	695 (3.66%)	942 (4.31%)	583 (2.85%)
American Indian or Alaska Native Alone	221 (1.36%)	213 (1.12%)	181 (0.83%)	2 (0.01%)
Some Other Race Alone	79 (0.49%)	131 (0.69%)	226 (1.03%)	99 (0.48%)
Claimed 2 or More Races	NA (NA)	498 (2.62%)	905 (4.14%)	834 (4.07%)
Hispanic or Latino of Any Race	375 (2.30%)	545 (2.87%)	985 (4.50%)	749 (3.66%)
Not Hispanic or Latino	15,913 (97.70%)	18,446 (97.13%)	20,883 (95.50%)	19,742 (96.34%)
Minority	1,921 (11.79%)	4,176 (21.99%)	6,954 (31.80%)	5,897 (28.78%)



Age Trends

Description	1990	2000	2010 (ACS)	2017 (ACS)
Under Age 5	7.20%	6.29%	7.12%	6.61%
Ages 5-17	20.63%	19.74%	16.70%	14.39%
Ages 18-21	5.75%	5.19%	5.07%	3.71%
Ages 22-29	12.14%	9.73%	11.42%	8.53%
Ages 30-39	16.99%	15.34%	12.20%	14.94%
Ages 40-49	15.16%	15.40%	13.73%	13.54%
Ages 50-64	13.97%	17.54%	20.54%	21.76%
Age 65 and Over	8.16%	10.77%	13.22%	16.52%
-Ages 65-74	5.76%	6.56%	8.28%	10.84%
-Ages 75-84	2.06%	3.61%	4.01%	4.95%
-Age 85 and Over	0.34%	0.61%	0.92%	0.73%
Median Age	NA	36	38	42

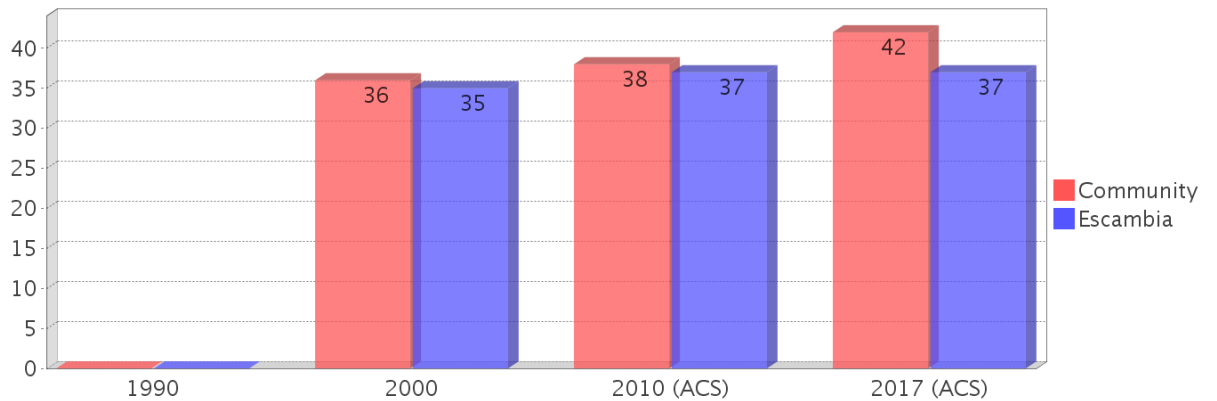
Percentage Population by Age Group



Income Trends

Description	1990	2000	2010 (ACS)	2017 (ACS)
Median Household Income	\$28,476	\$36,528	\$46,164	\$51,490
Median Family Income	\$30,850	\$40,595	\$49,795	\$62,528
Population below Poverty Level	10.18%	10.16%	13.34%	8.76%
Households below Poverty Level	11.35%	10.40%	11.56%	6.07%
Households with Public Assistance Income	5.05%	3.29%	2.01%	0.46%

Median Age Comparison

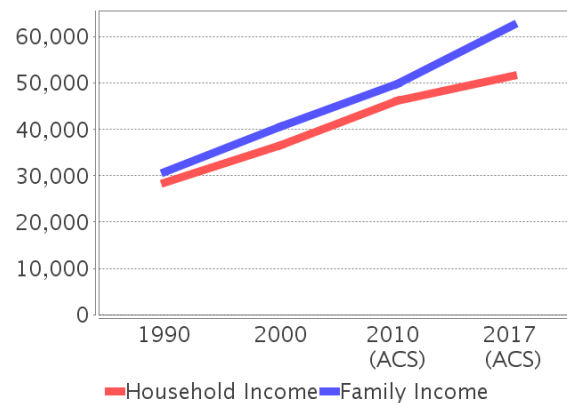


Disability Trends

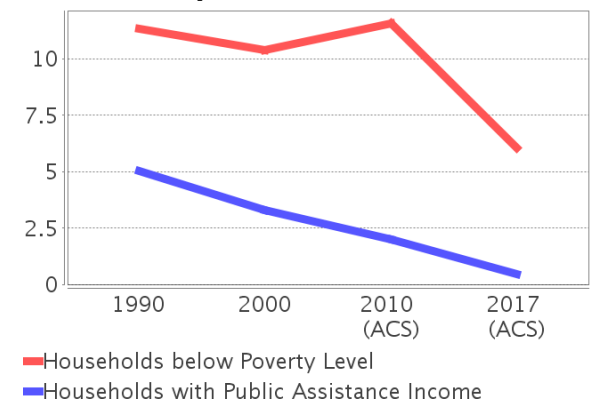
See the Data Sources section below for an explanation about the differences in disability data among the various years.

Description	1990	2000	2010 (ACS)	2017 (ACS)
Population 16 To 64 Years with a disability	1130 (9.57%)	2462 (14.23%)	(NA)	(NA)
Population 20 To 64 Years with a disability	(NA)	(NA)	(NA)	1433 (11.73%)

Income Trends



Poverty and Public Assistance



Educational Attainment Trends

Age 25 and Over

Description	1990	2000	2010 (ACS)	2017 (ACS)
Less than 9th Grade	610 (5.91%)	410 (3.29%)	708 (4.51%)	383 (2.56%)
9th to 12th Grade, No Diploma	1,451 (14.06%)	1,696 (13.61%)	1,353 (8.63%)	754 (5.03%)
High School Graduate or Higher	8,260 (80.02%)	10,359 (83.11%)	13,622 (86.86%)	13,840 (92.40%)
Bachelor's Degree or Higher	1,275 (12.35%)	1,690 (13.56%)	2,679 (17.08%)	3,356 (22.41%)

Language Trends

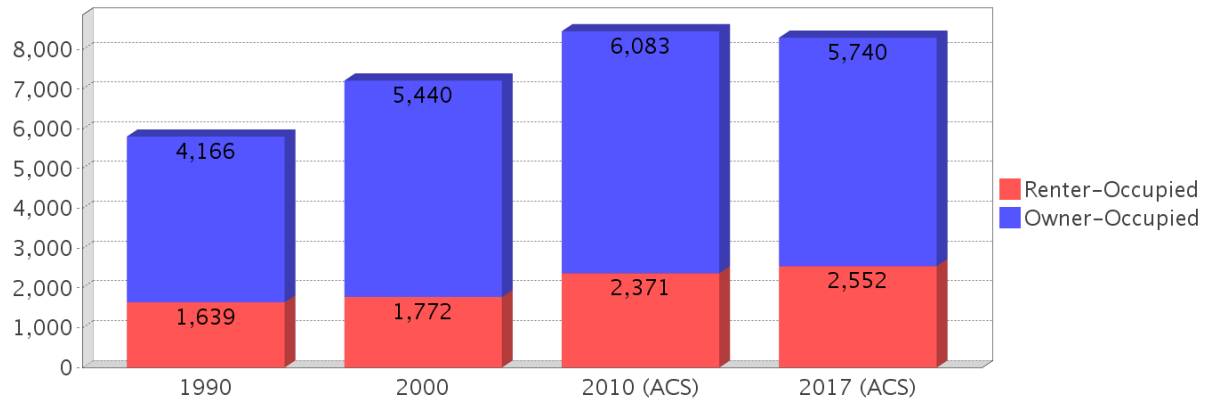
Age 5 and Over

Description	1990	2000	2010 (ACS)	2017 (ACS)
Speaks English Well	176 (1.16%)	132 (0.74%)	634 (3.00%)	281 (1.47%)
Speaks English Not Well	NA (NA)	151 (0.85%)	92 (0.44%)	51 (0.27%)
Speaks English Not at All	NA (NA)	51 (0.29%)	13 (0.06%)	36 (0.19%)
Speaks English Not Well or Not at All	100 (0.66%)	202 (1.14%)	105 (0.50%)	87 (0.45%)

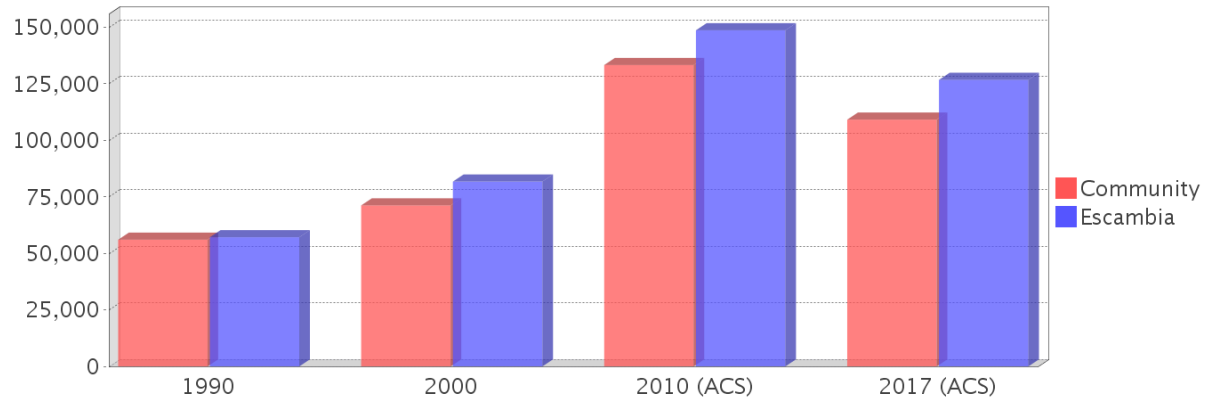
Housing Trends

Description	1990	2000	2010 (ACS)	2017 (ACS)
Total	6,324	7,732	9,244	9,534
Units per Acre	0.86	1.05	1.26	1.30
Single-Family Units	4,296	5,829	7,132	7,548
Multi-Family Units	595	791	1,022	978
Mobile Home Units	894	1,099	1,116	1,006
Owner-Occupied Units	4,166	5,440	6,083	5,740
Renter-Occupied Units	1,639	1,772	2,371	2,552
Vacant Units	519	520	790	1,242
Median Housing Value	\$56,000	\$71,200	\$133,250	\$109,100
Occupied Housing Units w/No Vehicle	255 (4.39%)	391 (5.42%)	307 (3.63%)	143 (1.72%)

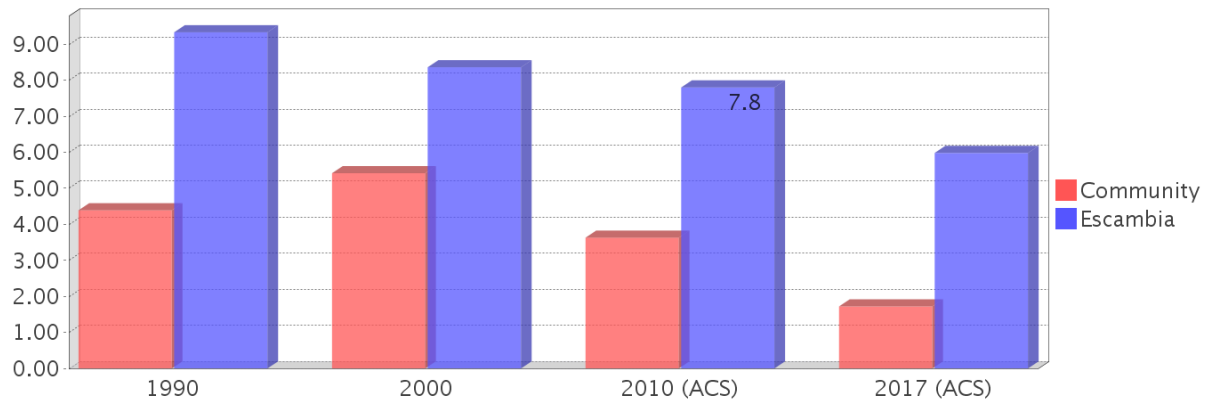
Housing Tenure



Median Housing Value Comparison

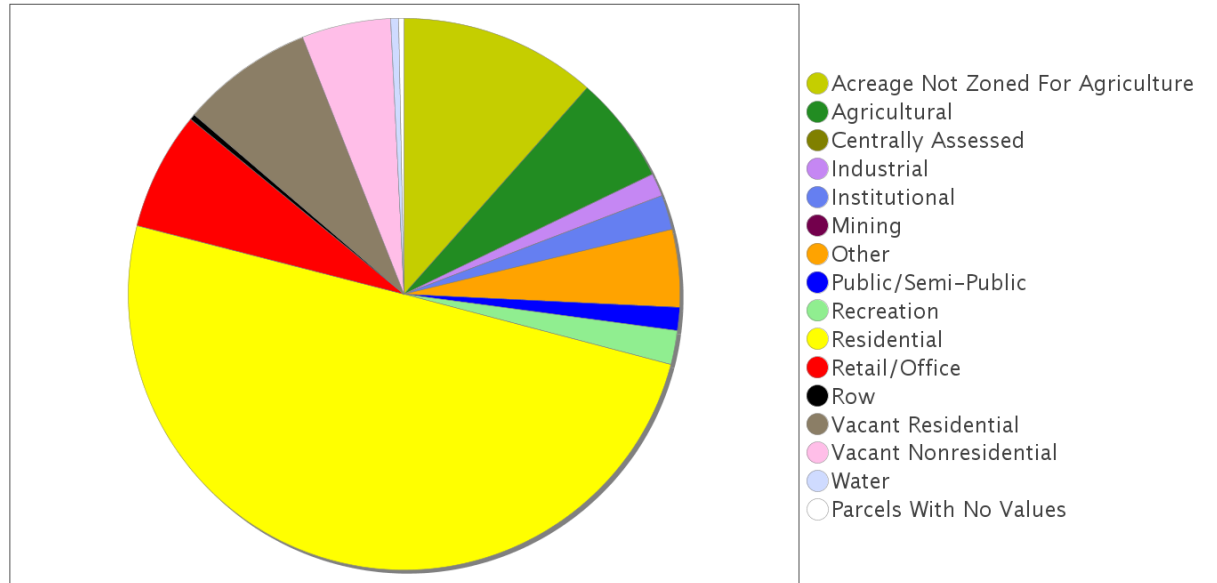


Occupied Units With No Vehicles Available

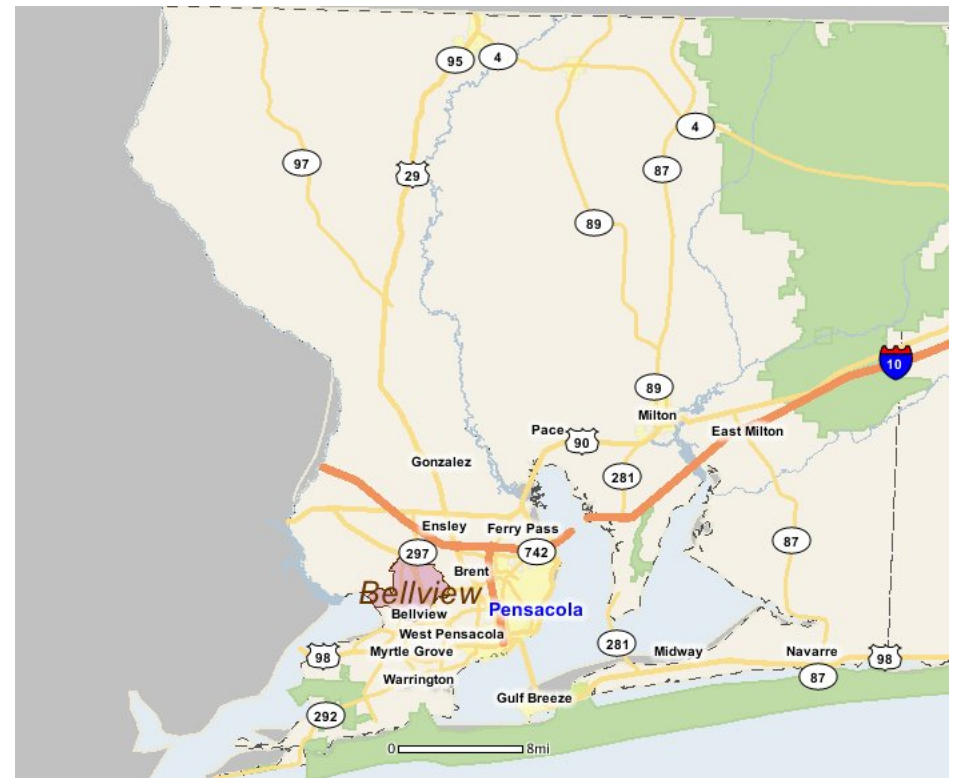
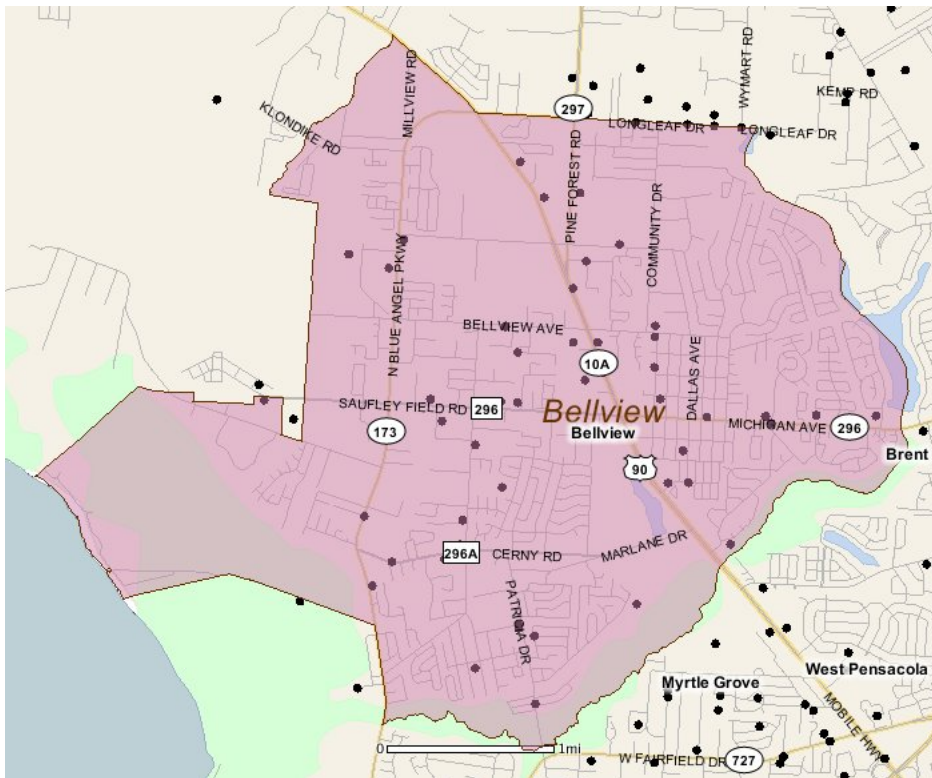


Existing Land Use

Land Use Type	Acres	Percentage
Acreage Not Zoned For Agriculture	770	10.21%
Agricultural	421	5.58%
Centrally Assessed	0	0.00%
Industrial	90	1.19%
Institutional	135	1.79%
Mining	0	0.00%
Other	302	4.01%
Public/Semi-Public	91	1.21%
Recreation	133	1.76%
Residential	3,329	44.16%
Retail/Office	462	6.13%
Row	22	0.29%
Vacant Residential	517	6.86%
Vacant Nonresidential	346	4.59%
Water	32	0.42%
Parcels With No Values	21	0.28%



Location Maps



Community Facilities

The community facilities information below is useful in a variety of ways for environmental evaluations. These community resources should be evaluated for potential sociocultural effects, such as accessibility and relocation potential. The facility types may indicate the types of population groups present in the project study area. Facility staff and leaders can be sources of community information such as who uses the facility and how it is used. Additionally, community facilities are potential public meeting venues.

Assisted Housing (Points)

Facility Name	Address	Zip Code
CERNY VILLAGE APARTMENTS	5227 CERNY RD	32526

Community Centers (Points)

Facility Name	Address	Zip Code
KNIGHTS OF COLUMBUS 15366 - OUR LADY OF THE SNOWS	5200 SAUFLEY FIELD RD	32526
BELLVIEW YOUTH ASSOCIATION	2750 LONGLEAF DR	32526

Fire Stations (Points)

Facility Name	Address	Zip Code
BELLVIEW VOLUNTEER FIRE DEPARTMENT STATION 1B	4701 MAYWOOD AVE	32526

Florida Parks and Recreational Facilities (Points)

Facility Name	Address	Zip Code
CHARLES JACK REDDIX PARK	6599 OAKCLIFF RD	32526
R L KING PARK / BAYOU MARCUS PARK	7705 LENORA ST	32526
CARRIAGE HILLS PARK (CHARBAR)	1810 BROYHILL DR	32526
AVONDALE PARK	6809 VESTAVIA LN	32526

Government Building

Facility Name	Address	Zip Code
U S POST OFFICE - CPU BELLVIEW	2400 W MICHIGAN AVE	32526
U S POST OFFICE - SAUFLEY FIELD	6000 SAUFLEY FIELD RD	32509

Mobile Home Parks in Florida

Facility Name	Address	Zip Code
BLUE ANGEL MHP	5301 BLUE ANGEL PKWY	32526
SABAL PALM MOBILE HOME PARK	2601 PATRICIA DR	32526
PATRICIA MHP	7318 HAYWARD AVE	32506
QUEEN ANNE MOBILE HOME PARK	5400 BUCKINGHAM RD	32526
MATHENY'S TP	5514 CERNY RD, OFFICE BOX	32526
BIG OAKS TRAILER PARK	3260 SANDY LANE	32526
TIMBERLAKE MOBILE HOME PARK	2600 W MICHIGAN AVE	32526

Public and Private Schools (Points)

Facility Name	Address	Zip Code
AMIKIDS PENSACOLA INC	3685 MULDOON RD	32526
PENSACOLA KIDS	5215 SAUFLEY FIELD RD	32526
BELLVIEW MIDDLE SCHOOL	6201 MOBILE HWY	32526
SCHOLARS ACADEMY	2610 MICHIGAN AVENUE	32526
BELLVIEW ELEMENTARY SCHOOL	4425 BELLVIEW AVE	32526

Religious Centers (Points)

Facility Name	Address	Zip Code
GREATER SPRINGHILL - AME ZION CHURCH	6350 N BLUE ANGEL PKWY	32526
ST ANNE PARISH (BELLVIEW)	5200 SAUFLEY FIELD RD	32526
BELLVIEW CHURCH OF CHRIST	4850 SAUFLEY FIELD ROAD	32526
BELLVIEW BAPTIST CHURCH	4750 SAUFLEY FIELD ROAD	32526

Facility Name	Address	Zip Code
PINE SUMMITT BAPTIST CHURCH	2920 BELLVIEW AVE	32526
CHARITY CHAPEL	5820 MONTGOMERY AVE	32526
WORDS OF LIFE INTERNATIONAL	2610 MICHIGAN AVE	32526
COMMUNITY OF CHRIST	5703 MULDOON ROAD	32526
BETHEL BAPTIST CHURCH	3097 PATRICIA DRIVE	32526
LUTHERAN CHURCH OF THE RESURRECTION	6305 N BLUE ANGEL PKWY	32526
CALVARY BAPTIST CHURCH	6820 PINE FOREST RD	32526
FAITH CHAPEL HOLINESS CHURCH	6320 MOBILE HWY	32526
HERITAGE BAPTIST CHURCH	2200 W MICHIGAN AVENUE	32526
JEHOVAH'S WITNESSES BELLVIEW	5575 BRADLEY STREET	32526
THE COMMUNITY CHURCH OF GOD	3700 BLUE ANGEL PKWY	32526
LIVING STONES FELLOWSHIP	6550 MOBILE HWY	32526
PLEASANT HOME PRIMITIVE BAPTIST CHURCH	6030 DENVER AVE	32526
CORNERSTONE BAPTIST CHURCH	5454 MOBILE HIGHWAY	32526
PENSACOLA BAPTIST TEMPLE	5000 CERNEY RD	32526
PENSACOLA DELIVERANCE TEMPLE	5830 MULDOON RD	32526
BELLVIEW UNITED METHODIST CHURCH	4945 SAUFLEY FIELD ROAD	32526
PINE FOREST PENTECOSTAL CHURCH	3030 GODWIN LN	32526
GATEWAY BAPTIST CHURCH	6800 MOBILE HWY	32526
SOVEREIGN GRACE BAPTIST CHURCH	6209 DENVER AVE	32526
BELLVIEW ASSEMBLY OF GOD	2920 W MICHIGAN AVENUE	32526
APOSTOLIC LIFE UNITED PENTECOSTAL CHURCH	6720 MOBILE HWY	32526
PINE SUMMIT BAPTIST CHURCH YOUTH ACTIVITY CENTER	6323 DENVER AVE	32526

US Census Places

Facility Name

Myrtle Grove

West Pensacola

Bellview

Brent

Block Groups

The following Census Block Groups were used to calculate demographics for this report.

1990 Census Block Groups

120330033011, 120330033035, 120330033039, 120330030003, 120330033036, 120330033023, 120330032024, 120330033025, 120330030001, 120330033024, 120330033022, 120330033021, 120330033029, 120330031009, 120330032012

2000 Census Block Groups

120330033024, 120330033023, 120330033021, 120330031009, 120330032011, 120330030001, 120330033061, 120330032024, 120330033022, 120330030003, 120330033051, 120330033062, 120330033011, 120330033071, 120330033025, 120330033029

2010 Census Block Groups

120330032041, 120330030001, 120330033051, 120330033063, 120330033011, 120330033061, 120330030002, 120330031003, 120330032042, 120330032012, 120330033062, 120330033092, 120330033094, 120330033081, 120330032033, 120330033091, 120330033064, 120330033093, 120330033071

2017 Census Block Groups

120330033071, 120330030001, 120330030002, 120330031003, 120330033091, 120330032042, 120330033063, 120330033081, 120330032033, 120330033094, 120330033062, 120330033064, 120330033011, 120330033092, 120330032041, 120330033093, 120330032012, 120330033051, 120330033061

Data Sources

Area

The geographic area of the community based on a user-specified community boundary or area of interest (AOI) boundary.

Jurisdiction

Jurisdiction(s) includes local government boundaries that intersect the community or AOI boundary.

Demographic Data

Demographic data reported under the headings General Population Trends, Race and Ethnicity Trends, Age Trends, Income Trends, Educational Attainment Trends, Language Trends, and Housing Trends is from the U.S. Decennial Census (1990, 2000) and the American Community Survey (ACS) 5-year estimates from 2006-2010 and 2013-2017. The data was gathered at the block group level for user-specified community boundaries and AOIs, and at the county level for counties. Depending on the dataset, the data represents 100% counts (Census Summary File 1) or sample-based information (Census Summary File 3 or ACS).

About the Census Data:

User-specified community boundaries and AOIs do not always correspond precisely to block group boundaries. In these instances, adjustment of the geographic area and data for affected block groups is required to estimate the actual population. To improve the accuracy of such estimates in the SDR report, the census block group data was adjusted to exclude all census blocks with a population of two or fewer. These areas were eliminated from the corresponding years' block groups. Next, the portion of the block group that lies outside of the community or AOI boundary was removed. The demographics within each block group were then recalculated, assuming an equal area distribution of the population.

Note that there may be areas where there is no population.

Use caution when comparing the 100% count data (Decennial Census) to the sample-based data (ACS). In any given year, about one in 40 or 2.5% of U.S. households will receive the ACS questionnaire. Over any five-year period, about one in eight households will receive the questionnaire, as compared to about one in six that received the long form questionnaire for the Decennial Census 2000. (Source: <http://mcdc.missouri.edu/pub/data/acs/Readme.shtml>) The U.S. Census Bureau provides help with this process:

<https://www.census.gov/programs-surveys/acs/guidance/comparing-acs-data/2017.html>

Use caution when interpreting changes in Race and Ethnicity over time. Starting with the 2000 Decennial Census, respondents were given a new option of selecting one or more race categories. Also in 2000, the placement of the question about Hispanic origin changed, helping to increase responsiveness to the Hispanic-origin question. Because of these and other changes, the 1990 data on race and ethnicity are not directly comparable with data from later censuses. (Source: <http://www.census.gov/prod/2001pubs/c2kbr01-1.pdf>; <http://www.census.gov/pred/www/rpts/Race%20and%20Ethnicity%20FINAL%20report.pdf>)

The "Minority" calculations are derived from Census and ACS data using both the race and ethnicity responses. On this report, "Minority" refers to individuals who list a race other than White and/or list their ethnicity as Hispanic/Latino. In other words, people who are multi-racial, any single race other than White, or Hispanic/Latino of any race are considered minorities.

Disability data is not included in the 2010 Decennial Census, or the 2006-2010 ACS. This data is available in the 2013-2017 ACS.

Because of changes made to the Census and ACS questions between 1990 and 2017, disability variables should not be compared from year to year. For example: 1) With the 1990 data the disabilities are listed as a "work disability" while this distinction is not made with 2000 or 2017 ACS data; 2) The 2017 ACS data includes the institutionalized population (e.g. persons in prisons and group homes), while this population is not included in 1990 or 2000; 3) the age groupings changed over the years.

Please take the following two concerns into account when viewing this data: 1) With the 1990 data the disabilities are listed as a "work disability" while this distinction is not made with 2000 or 2017 ACS data; 2) The 2017 ACS data includes the institutionalized population (e.g. persons in prisons and group homes), while this population is not included in 1990 or 2000.

The category Bachelor's Degree or Higher under the heading Educational Attainment Trends is a subset of the category High School Graduate or Higher.

Income of households. This includes the income of the householder and all other individuals 15 years old and over in the household, whether they are related to the householder or not. Because many households consist of only one person, average household income is usually less than average family income.

Income of families. In compiling statistics on family income, the incomes of all members 15 years old and over related to the householder are summed and treated as a single amount.

Age Trends median age for 1990 is not available.

Land Use Data

The Land Use information Indicates acreages and percentages for the generalized land use types used to group parcel-specific, existing land use assigned by the county property appraiser office according to the Florida Department of Revenue land use codes.

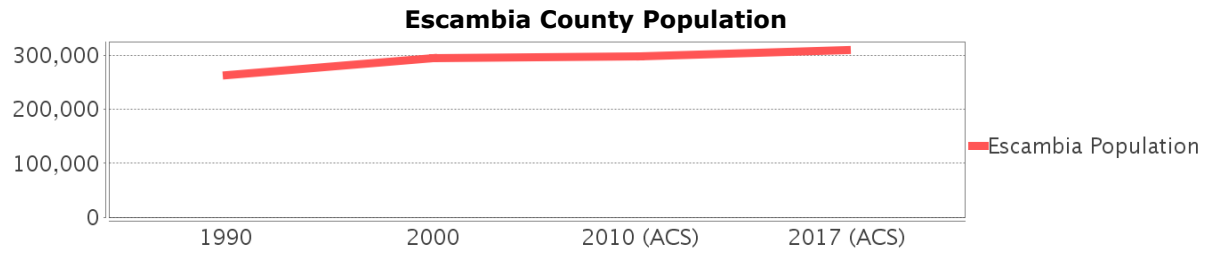
Community Facilities Data

- Assisted Rental Housing Units - Identifies multifamily rental developments that receive funding assistance under federal, state, and local government programs to offer affordable housing as reported by the Shimberg Center for Housing Studies, University of Florida.
- Mobile Home Parks - Identifies approved or acknowledged mobile home parks reported by the Florida Department of Business and Professional Regulation and Florida Department of Health.
- Migrant Camps - Identifies migrant labor camp facilities inspected by the Florida Department of Health.
- Group Care Facilities - Identifies group care facilities inspected by the Florida Department of Health.
- Community Center and Fraternal Association Facilities - Identifies facilities reported by multiple sources.
- Law Enforcement Correctional Facilities - Identifies facilities reported by multiple sources.
- Cultural Centers - Identifies cultural centers including organizations, buildings, or complexes that promote culture and arts (e.g., aquariums and zoological facilities; arboreta and botanical gardens; dinner theaters; drive-ins; historical places and services; libraries; motion picture theaters; museums and art galleries; performing arts centers; performing arts theaters; planetariums; studios and art galleries; and theater producers stage facilities) reported by multiple sources.
- Fire Department and Rescue Station Facilities - Identifies facilities reported by multiple sources.
- Government Buildings - Identifies local, state, and federal government buildings reported by multiple sources.
- Health Care Facilities - Identifies health care facilities including abortion clinics, dialysis clinics, medical doctors, nursing homes, osteopaths, state laboratories/clinics, and surgicenters/walk-in clinics reported by the Florida Department of Health.
- Hospital Facilities - Identifies hospital facilities reported by multiple sources.
- Law Enforcement Facilities - Identifies law enforcement facilities reported by multiple sources.
- Parks and Recreational Facilities - Identifies parks and recreational facilities reported by multiple sources.
- Religious Center Facilities - Identifies religious centers including churches, temples, synagogues, mosques, chapels, centers, and other types of religious facilities reported by multiple sources.
- Private and Public Schools - Identifies private and public schools reported by multiple sources.
- Social Service Centers - Identifies social service centers reported by multiple sources.
- Veteran Organizations and Facilities

Escambia County Demographic Profile

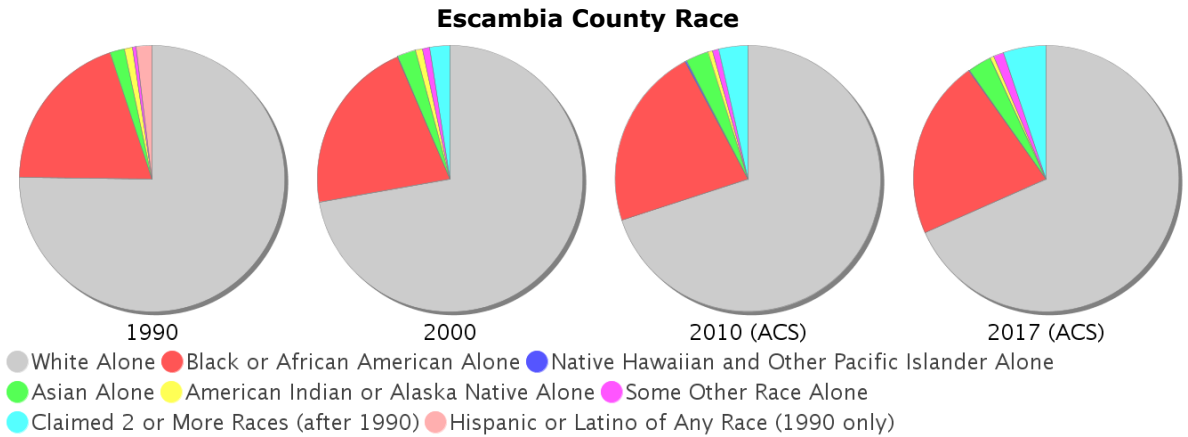
General Population Trends - Escambia

Description	1990	2000	2010 (ACS)	2017 (ACS)
Total Population	262,798	294,410	297,940	309,924
Total Households	98,608	111,049	113,313	117,836
Average Persons per Acre	0.614	0.685	0.693	0.723
Average Persons per Household	2.665	2.455	2.00	2.47
Average Persons per Family	3.111	3.055	3.089	3.293
Males	127,599	146,045	147,521	153,834
Females	135,199	148,365	150,419	156,090



Race and Ethnicity Trends - Escambia

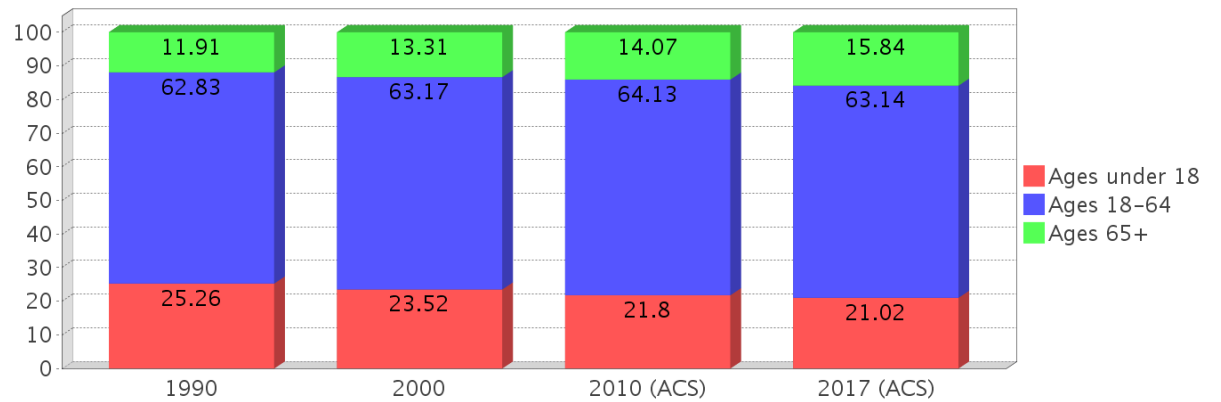
Description	1990	2000	2010 (ACS)	2017 (ACS)
White Alone	201,235 (76.57%)	212,596 (72.21%)	208,376 (69.94%)	211,815 (68.34%)
Black or African American Alone	52,618 (20.02%)	62,691 (21.29%)	66,202 (22.22%)	67,398 (21.75%)
Native Hawaiian and Other Pacific Islander Alone	(NA)	235 (0.08%)	481 (0.16%)	368 (0.12%)
Asian Alone	4,841 (1.84%)	6,565 (2.23%)	8,255 (2.77%)	9,050 (2.92%)
American Indian or Alaska Native Alone	2,632 (1.00%)	2,522 (0.86%)	1,742 (0.58%)	1,411 (0.46%)
Some Other Race Alone	1,265 (0.48%)	2,630 (0.89%)	2,205 (0.74%)	3,739 (1.21%)
Claimed 2 or More Races	(NA)	7,171 (2.44%)	10,679 (3.58%)	16,143 (5.21%)
Hispanic or Latino of Any Race	5,013 (1.91%)	7,816 (2.65%)	13,385 (4.49%)	16,935 (5.46%)
Not Hispanic or Latino	257,785 (98.09%)	286,594 (97.35%)	284,555 (95.51%)	292,989 (94.54%)
Minority	100,718 (38.33%)	86,062 (29.23%)	100,718 (33.80%)	108,961 (35.16%)



Age Trends - Escambia

Description	1990	2000	2010 (ACS)	2017 (ACS)
Under Age 5	7.37%	6.04%	6.26%	6.06%
Ages 5-17	17.89%	17.48%	15.54%	14.96%
Ages 18-21	7.09%	7.60%	8.38%	7.42%
Ages 22-29	13.60%	11.34%	11.55%	12.80%
Ages 30-39	15.84%	14.42%	11.54%	11.93%
Ages 40-49	12.35%	14.66%	13.65%	11.17%
Ages 50-64	13.96%	15.15%	19.00%	19.81%
Age 65 and Over	11.91%	13.31%	14.07%	15.84%
-Ages 65-74	7.43%	7.38%	7.59%	9.20%
-Ages 75-84	3.50%	4.64%	4.74%	4.90%
-Age 85 and Over	0.97%	1.30%	1.74%	1.75%
Median Age	NA	35	37	37

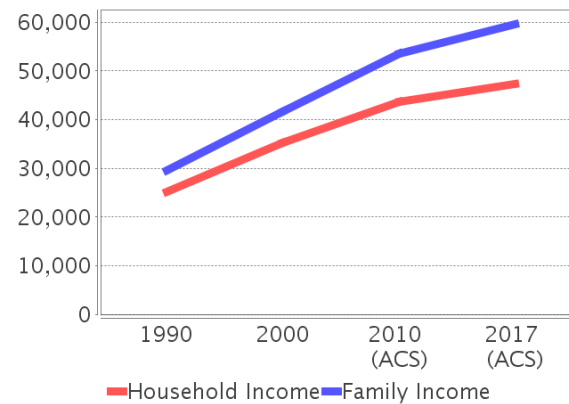
Percentage Population by Age Group - Escambia



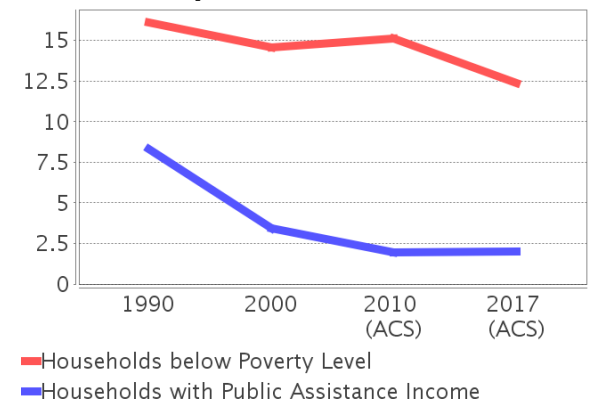
Income Trends - Escambia

Description	1990	2000	2010 (ACS)	2017 (ACS)
Median Household Income	\$25,158	\$35,234	\$43,573	\$47,361
Median Family Income	\$29,490	\$41,708	\$53,495	\$59,598
Population below Poverty Level	17.02%	15.44%	16.40%	14.58%
Households below Poverty Level	16.08%	14.56%	15.08%	12.39%
Households with Public Assistance Income	8.34%	3.46%	1.94%	2.02%

Income Trends



Poverty and Public Assistance



Disability Trends - Escambia

See the Data Sources section below for an explanation about the differences in disability data among the various years.

Description	1990	2000	2010 (ACS)	2017 (ACS)
Population 16 To 64 Years with a disability	17,476 (9.21%)	36,659 (14.38%)	NA (NA)	NA (NA)
Population 20 To 64 Years with a disability	NA (NA)	NA (NA)	NA (NA)	22,197 (12.80%)

Educational Attainment Trends - Escambia

Age 25 and Over

Description	1990	2000	2010 (ACS)	2017 (ACS)
Less than 9th Grade	13,240 (8.02%)	9,567 (5.04%)	7,306 (3.76%)	5,142 (2.50%)
9th to 12th Grade, No Diploma	26,040 (15.77%)	24,475 (12.90%)	18,445 (9.50%)	14,320 (6.95%)
High School Graduate or Higher	125,814 (76.21%)	155,668 (82.06%)	168,411 (86.74%)	186,542 (90.55%)
Bachelor's Degree or Higher	30,006 (18.18%)	39,789 (20.97%)	45,424 (23.39%)	53,465 (25.95%)

Language Trends - Escambia

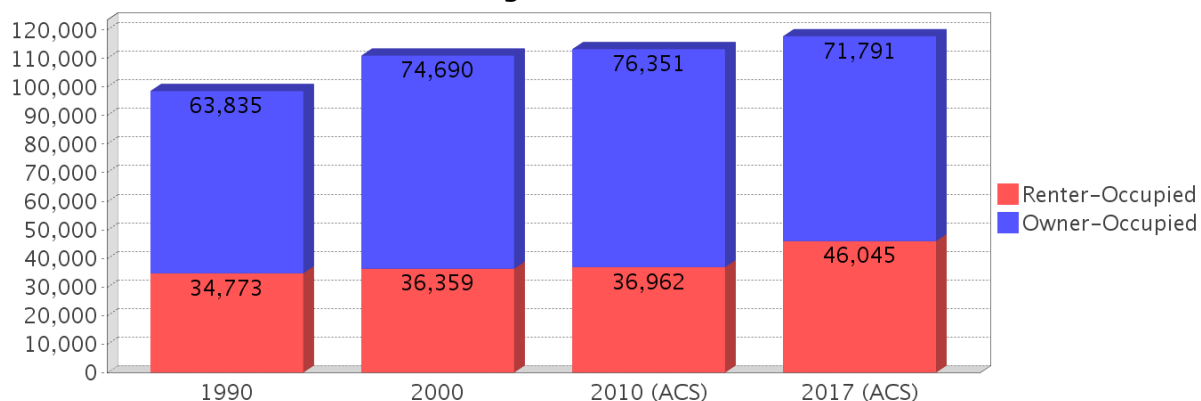
Age 5 and Over

Description	1990	2000	2010 (ACS)	2017 (ACS)
Speaks English Well	2,493 (1.02%)	3,515 (1.27%)	5,056 (1.81%)	4,256 (1.46%)
Speaks English Not Well	NA (NA)	2,214 (0.80%)	2,571 (0.92%)	1,969 (0.68%)
Speaks English Not at All	NA (NA)	379 (0.14%)	781 (0.28%)	736 (0.25%)
Speaks English Not Well or Not at All	1,571 (0.65%)	2,593 (0.94%)	3,352 (1.20%)	2,705 (0.93%)

Housing Trends - Escambia

Description	1990	2000	2010 (ACS)	2017 (ACS)
Total	112,230	124,647	136,151	139,751
Units per Acre	0.262	0.29	0.317	0.326
Single-Family Units	70,560	87,133	94,640	97,714
Multi-Family Units	18,301	25,401	30,795	31,908
Mobile Home Units	8,982	11,935	10,458	10,043
Owner-Occupied Units	63,835	74,690	76,351	71,791
Renter-Occupied Units	34,773	36,359	36,962	46,045
Vacant Units	13,622	13,598	22,838	21,915
Median Housing Value	\$57,100	\$81,700	\$148,600	\$126,700
Occupied Housing Units w/No Vehicle	9,199 (9.33%)	9,285 (8.36%)	8,841 (7.80%)	7,041 (5.98%)

Housing Tenure - Escambia



County Data Sources

Demographic data reported is from the U.S. Decennial Census (1990, 2000) and the American Community Survey (ACS) 5-year estimates from 2006-2010 and 2013-2017. The data was gathered at the county level. Depending on the dataset, the data represents 100% counts (Census Summary File 1) or sample-based information (Census Summary File 3 or ACS).

About the Census Data:

Use caution when comparing the 100% count data (Decennial Census) to the sample-based data (ACS). In any given year, about one in 40 or 2.5% of U.S. households will receive the ACS questionnaire. Over any five-year period, about one in eight households will receive the questionnaire, as compared to about one in six that received the long form questionnaire for the Decennial Census 2000. (Source: <http://mcdc.missouri.edu/pub/data/acs/Readme.shtml>) The U.S. Census Bureau provides help with this process:

<https://www.census.gov/programs-surveys/acs/guidance/comparing-acs-data/2017.html>

Use caution when interpreting changes in Race and Ethnicity over time. Starting with the 2000 Decennial Census, respondents were given a new option of selecting one or more race categories. Also in 2000, the placement of the question about Hispanic origin changed, helping to increase responsiveness to the Hispanic-origin question. Because of these and other changes, the 1990 data on race and ethnicity are not directly comparable with data from later censuses. (Source: <http://www.census.gov/prod/2001pubs/c2kbr01-1.pdf>; <http://www.census.gov/pred/www/rpts/Race%20and%20Ethnicity%20FINAL%20report.pdf>)

The "Minority" calculations are derived from Census and ACS data using both the race and ethnicity responses. On this report, "Minority" refers to individuals who list a race other than White and/or list their ethnicity as Hispanic/Latino. In other words, people who are multi-racial, any single race other than White, or Hispanic/Latino of any race are considered minorities.

Disability data is not included in the 2010 Decennial Census, or the 2006-2010 ACS. This data is available in the 2013-2017 ACS.

Because of changes made to the Census and ACS questions between 1990 and 2017, disability variables should not be compared from year to year. For example: 1) With the 1990 data the disabilities are listed as a "work disability" while this distinction is not made with 2000 or 2017 ACS data; 2) The 2017 ACS data includes the institutionalized population (e.g. persons in prisons and group homes), while this population is not included in 1990 or 2000; 3) the age groupings changed over the years.

Please take the following two concerns into account when viewing this data: 1) With the 1990 data the disabilities are listed as a "work disability" while this distinction is not made with 2000 or 2017 ACS data; 2) The 2017 ACS data includes the institutionalized population (e.g. persons in prisons and group homes), while this population is not included in 1990 or 2000.

source:

<https://www.census.gov/people/disability/methodology/acs.html>

<https://www.census.gov/population/www/cen2000/90vs00/index.html>

The category Bachelor's Degree or Higher under the heading Educational Attainment Trends is a subset of the category High School Graduate or Higher.

Metadata

- Community and Fraternal Centers https://etdmpub.florida-estat.org/metadata/gc_communitycenter.htm
- Correctional Facilities in Florida https://etdmpub.florida-estat.org/metadata/gc_correctional.htm
- Cultural Centers in Florida https://etdmpub.florida-estat.org/metadata/gc_culturecenter.htm
- Fire Department and Rescue Station Facilities in Florida https://etdmpub.florida-estat.org/metadata/gc_firestat.htm
- Local, State, and Federal Government Buildings in Florida https://etdmpub.florida-estat.org/metadata/gc_govbuild.htm
- Florida Health Care Facilities https://etdmpub.florida-estat.org/metadata/gc_health.htm
- Hospital Facilities in Florida https://etdmpub.florida-estat.org/metadata/gc_hospitals.htm
- Law Enforcement Facilities in Florida https://etdmpub.florida-estat.org/metadata/gc_lawenforce.htm
- Florida Parks and Recreational Facilities https://etdmpub.florida-estat.org/metadata/gc_parks.htm
- Religious Centers https://etdmpub.florida-estat.org/metadata/gc_religion.htm
- Florida Public and Private Schools https://etdmpub.florida-estat.org/metadata/gc_schools.htm
- Social Service Centers https://etdmpub.florida-estat.org/metadata/gc_socialservice.htm
- Assisted Rental Housing Units in Florida https://etdmpub.florida-estat.org/metadata/gc_assisted_housing.htm
- Group Care Facilities <https://etdmpub.florida-estat.org/metadata/groupcare.htm>
- Mobile Home Parks in Florida https://etdmpub.florida-estat.org/metadata/gc_mobilehomes.htm
- Migrant Camps in Florida <https://etdmpub.florida-estat.org/metadata/migrant.htm>
- Veteran Organizations and Facilities https://etdmpub.florida-estat.org/metadata/gc_veterans.htm
- Generalized Land Use - Florida DOT District 3 https://etdmpub.florida-estat.org/metadata/d3_lu_gen.htm
- Census Block Groups in Florida https://etdmpub.florida-estat.org/metadata/e2_cenacs_cci.htm
- 1990 Census Block Groups in Florida https://etdmpub.florida-estat.org/metadata/e2_cenblkgrp_1990_cci.htm
- 2000 Census Block Groups in Florida https://etdmpub.florida-estat.org/metadata/e2_cenblkgrp_2000_cci.htm
- 2010 Census Block Groups in Florida https://etdmpub.florida-estat.org/metadata/e2_cenblkgrp_2010_cci.htm