

Sociocultural Data Report

Cedar Grove

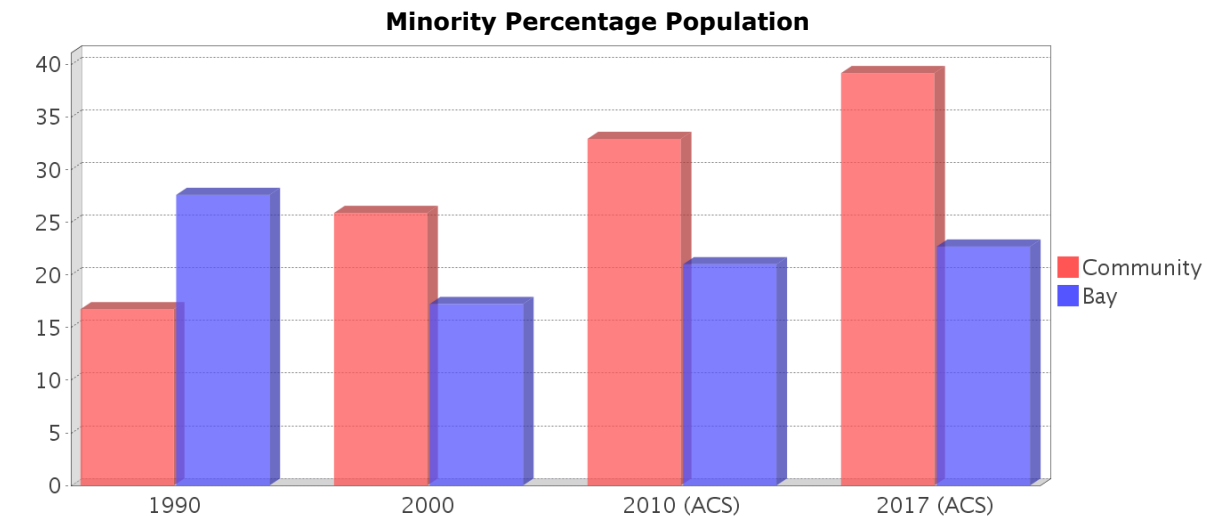
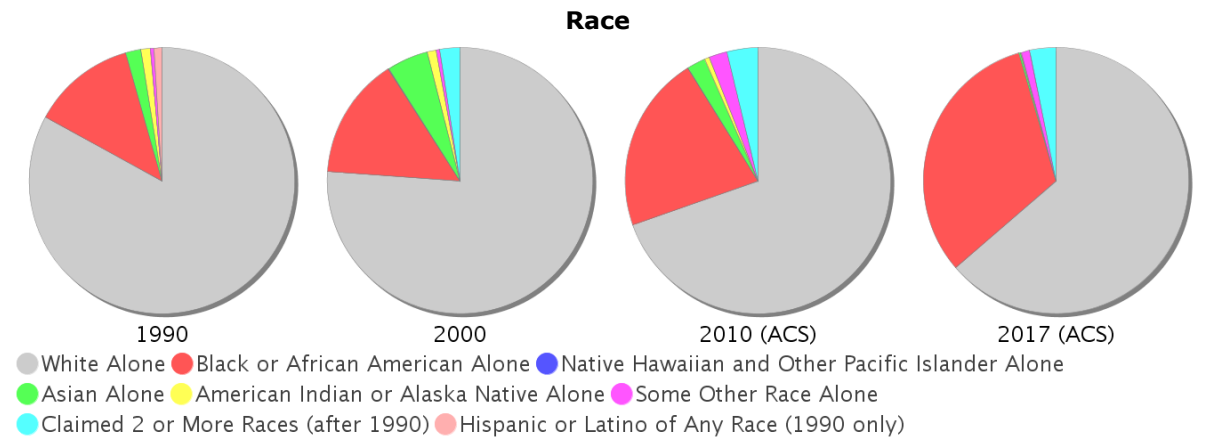
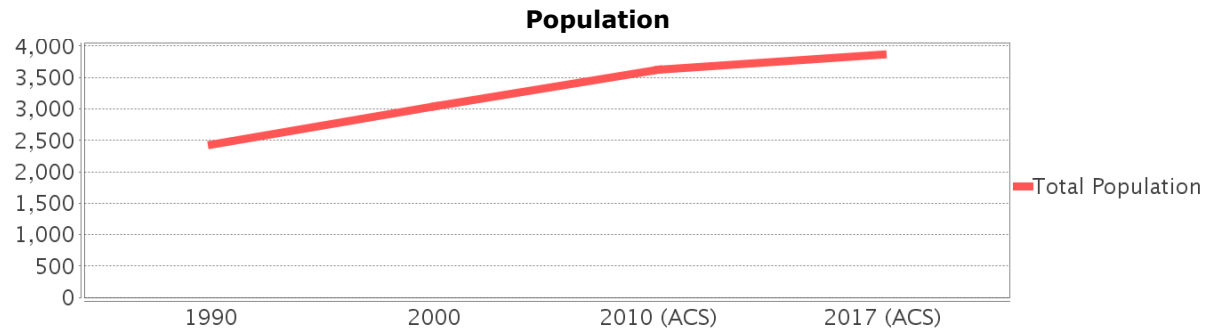
Area: 2.699 square miles
Jurisdiction(s): **Cities:** Panama City, Springfield
Counties: Bay

General Population Trends

Description	1990	2000	2010 (ACS)	2017 (ACS)
Total Population	2,430	3,039	3,625	3,863
Total Households	980	1,233	1,383	1,316
Average Persons per Acre	3.70	3.11	3.61	3.64
Average Persons per Household	2.69	2.58	2.78	2.85
Average Persons per Family	3.25	3.21	3.00	3.73
Males	1,170	1,426	1,711	1,858
Females	1,260	1,613	1,914	2,005

Race and Ethnicity Trends

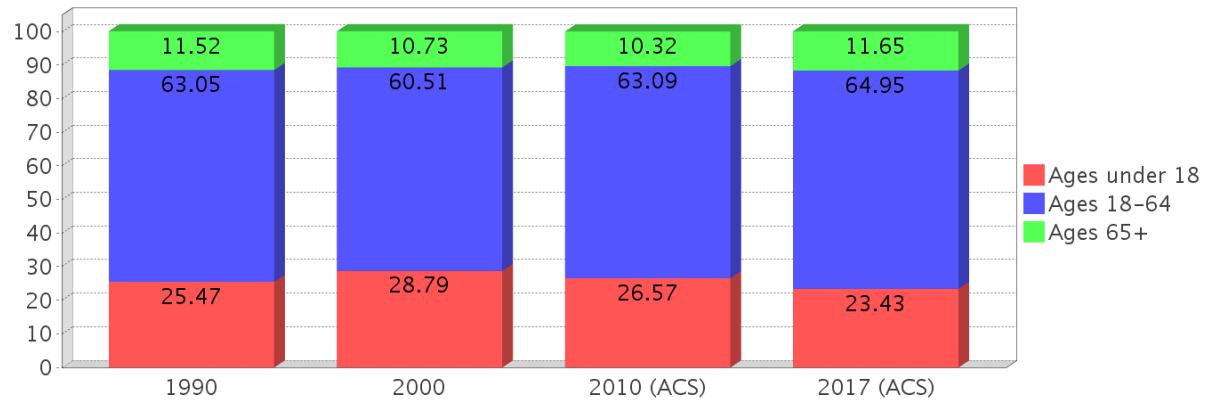
Description	1990	2000	2010 (ACS)	2017 (ACS)
White Alone	2,035 (83.74%)	2,313 (76.11%)	2,522 (69.57%)	2,458 (63.63%)
Black or African American Alone	311 (12.80%)	451 (14.84%)	781 (21.54%)	1,230 (31.84%)
Native Hawaiian and Other Pacific Islander Alone	0 (0.00%)	2 (0.07%)	2 (0.06%)	0 (0.00%)
Asian Alone	46 (1.89%)	154 (5.07%)	80 (2.21%)	10 (0.26%)
American Indian or Alaska Native Alone	27 (1.11%)	33 (1.09%)	23 (0.63%)	2 (0.05%)
Some Other Race Alone	11 (0.45%)	13 (0.43%)	80 (2.21%)	41 (1.06%)
Claimed 2 or More Races	NA (NA)	74 (2.44%)	137 (3.78%)	122 (3.16%)
Hispanic or Latino of Any Race	24 (0.99%)	100 (3.29%)	200 (5.52%)	175 (4.53%)
Not Hispanic or Latino	2,406 (99.01%)	2,939 (96.71%)	3,425 (94.48%)	3,688 (95.47%)
Minority	407 (16.75%)	787 (25.90%)	1,194 (32.94%)	1,514 (39.19%)



Age Trends

Description	1990	2000	2010 (ACS)	2017 (ACS)
Under Age 5	8.02%	9.58%	7.97%	6.96%
Ages 5-17	17.45%	19.22%	18.59%	16.46%
Ages 18-21	6.50%	4.64%	5.79%	5.23%
Ages 22-29	15.88%	13.82%	12.33%	14.65%
Ages 30-39	14.81%	16.26%	14.29%	15.12%
Ages 40-49	10.99%	11.58%	14.87%	11.80%
Ages 50-64	14.86%	14.22%	15.81%	18.15%
Age 65 and Over	11.52%	10.73%	10.32%	11.65%
-Ages 65-74	7.90%	6.38%	5.57%	7.97%
-Ages 75-84	3.09%	3.78%	3.78%	2.87%
-Age 85 and Over	0.53%	0.53%	0.97%	0.78%
Median Age	NA	32	33	35

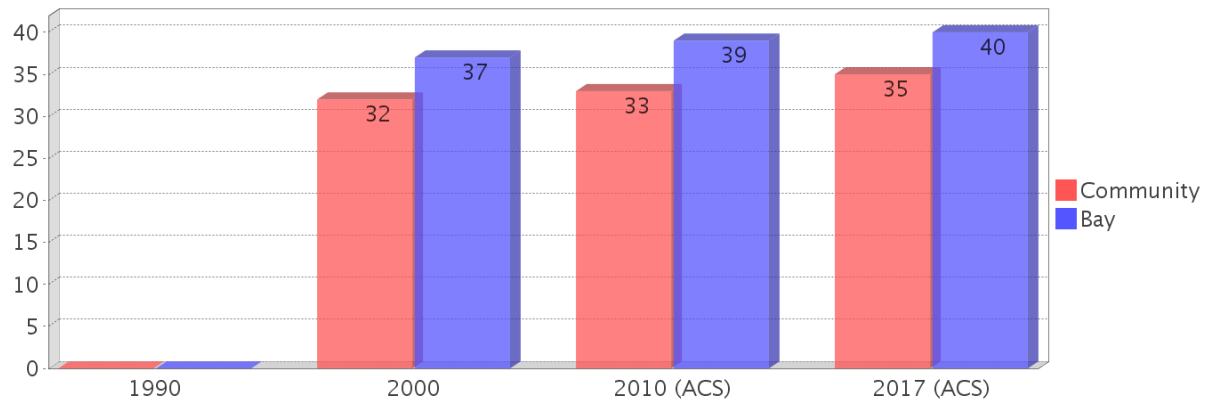
Percentage Population by Age Group



Income Trends

Description	1990	2000	2010 (ACS)	2017 (ACS)
Median Household Income	\$16,007	\$23,816	\$34,738	\$38,382
Median Family Income	\$18,311	\$27,829	\$39,776	\$37,875
Population below Poverty Level	19.14%	23.20%	13.02%	26.87%
Households below Poverty Level	20.20%	20.36%	15.11%	24.39%
Households with Public Assistance Income	8.27%	7.30%	0.29%	3.27%

Median Age Comparison

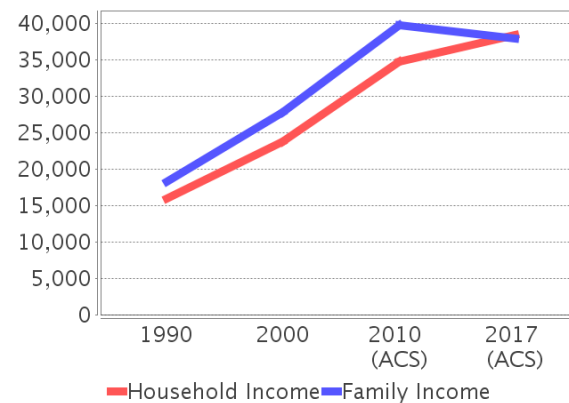


Disability Trends

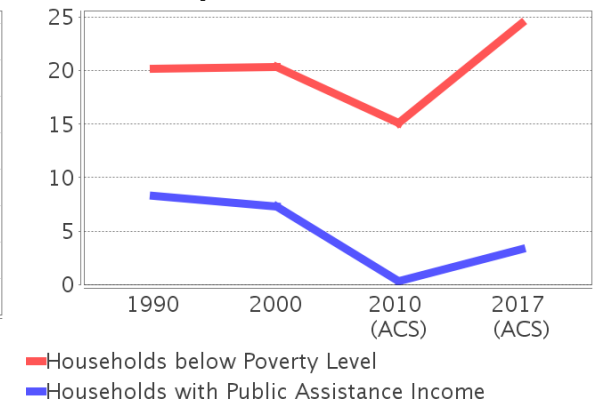
See the Data Sources section below for an explanation about the differences in disability data among the various years.

Description	1990	2000	2010 (ACS)	2017 (ACS)
Population 16 To 64 Years with a disability	199 (10.80%)	456 (16.97%)	(NA)	(NA)
Population 20 To 64 Years with a disability	(NA)	(NA)	(NA)	416 (17.44%)

Income Trends



Poverty and Public Assistance



Educational Attainment Trends

Age 25 and Over

Description	1990	2000	2010 (ACS)	2017 (ACS)
Less than 9th Grade	255 (16.37%)	149 (7.95%)	187 (7.99%)	127 (4.90%)
9th to 12th Grade, No Diploma	416 (26.70%)	393 (20.97%)	333 (14.24%)	282 (10.88%)
High School Graduate or Higher	887 (56.93%)	1,331 (71.02%)	1,819 (77.77%)	2,185 (84.27%)
Bachelor's Degree or Higher	88 (5.65%)	134 (7.15%)	144 (6.16%)	319 (12.30%)

Language Trends

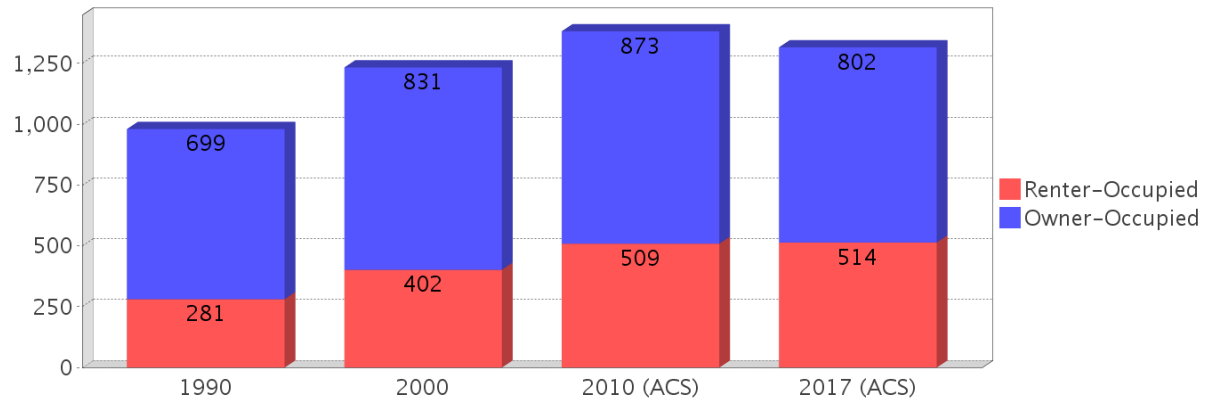
Age 5 and Over

Description	1990	2000	2010 (ACS)	2017 (ACS)
Speaks English Well	19 (0.85%)	41 (1.49%)	67 (2.07%)	35 (0.97%)
Speaks English Not Well	NA (NA)	49 (1.78%)	34 (1.05%)	23 (0.64%)
Speaks English Not at All	NA (NA)	5 (0.18%)	48 (1.48%)	3 (0.08%)
Speaks English Not Well or Not at All	13 (0.58%)	54 (1.97%)	82 (2.53%)	26 (0.72%)

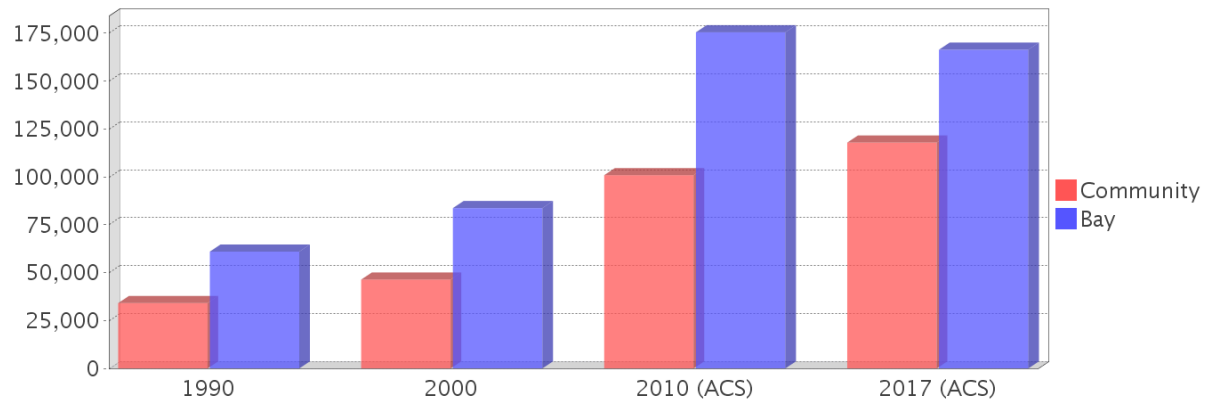
Housing Trends

Description	1990	2000	2010 (ACS)	2017 (ACS)
Total	1,103	1,383	1,612	1,600
Units per Acre	0.73	0.86	1.04	1.04
Single-Family Units	435	534	653	696
Multi-Family Units	105	242	143	171
Mobile Home Units	434	606	752	670
Owner-Occupied Units	699	831	873	802
Renter-Occupied Units	281	402	509	514
Vacant Units	124	150	229	284
Median Housing Value	\$34,100	\$46,400	\$100,900	\$117,900
Occupied Housing Units w/No Vehicle	70 (7.15%)	114 (9.25%)	121 (8.75%)	50 (3.80%)

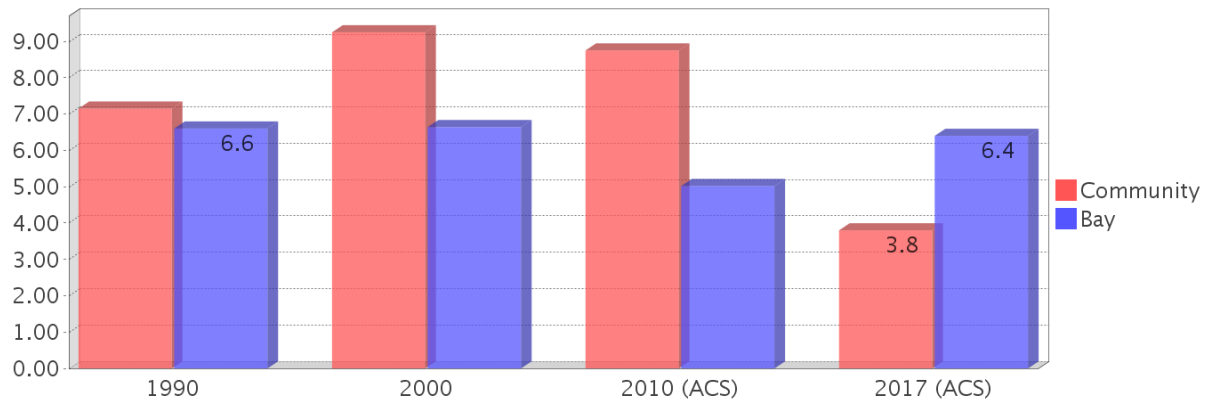
Housing Tenure



Median Housing Value Comparison

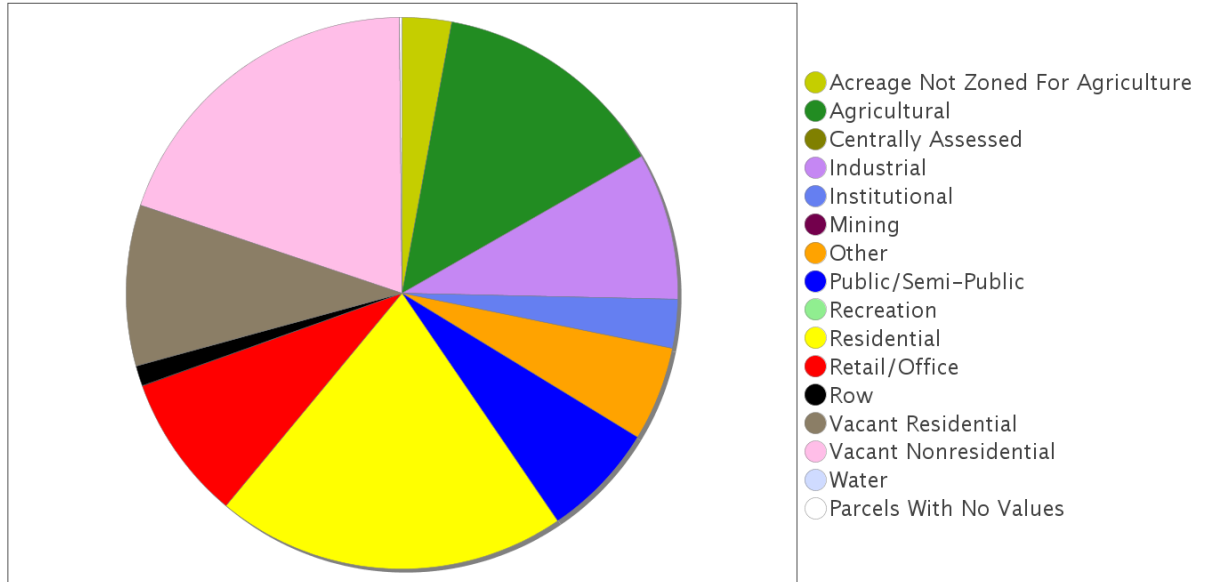


Occupied Units With No Vehicles Available

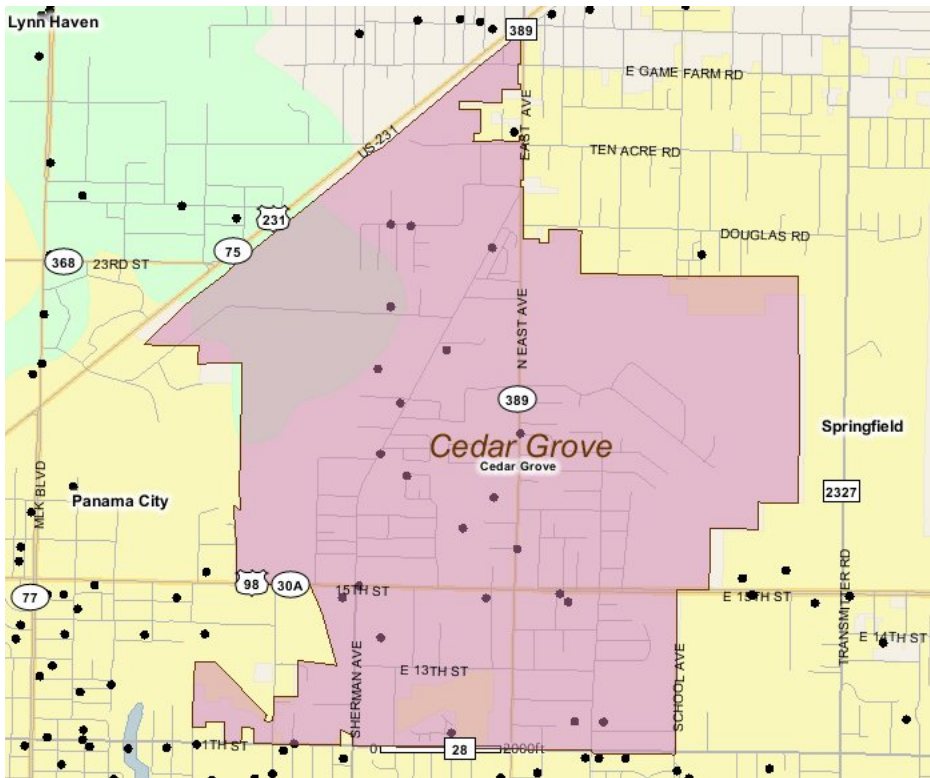


Existing Land Use

Land Use Type	Acres	Percentage
Acreage Not Zoned For Agriculture	45	2.61%
Agricultural	216	12.50%
Centrally Assessed	0	0.00%
Industrial	134	7.76%
Institutional	45	2.61%
Mining	0	0.00%
Other	86	4.98%
Public/Semi-Public	105	6.08%
Recreation	0	0.00%
Residential	320	18.53%
Retail/Office	133	7.70%
Row	19	1.10%
Vacant Residential	147	8.51%
Vacant Nonresidential	307	17.77%
Water	0	0.00%
Parcels With No Values	2	0.12%



Location Maps



Community Facilities

The community facilities information below is useful in a variety of ways for environmental evaluations. These community resources should be evaluated for potential sociocultural effects, such as accessibility and relocation potential. The facility types may indicate the types of population groups present in the project study area. Facility staff and leaders can be sources of community information such as who uses the facility and how it is used. Additionally, community facilities are potential public meeting venues.

Assisted Housing (Points)

Facility Name	Address	Zip Code
MAGNOLIA POINTE - CEDAR GROVE	2437 EAST 11 STREET	32401

Community Boundaries (User defined)

Facility Name
Unincorporated
Panama City Incorporated

Community Centers (Points)

Facility Name	Address	Zip Code
DISABLED AMERICAN VETERANS CHAPTER 17	2230 E 15TH ST	32405
VFW POST 2185 - WAINWRIGHT	2136 SHERMAN AVE	32405
AMERICAN LEGION POST 66	2230 E 15TH ST	32405

Florida Parks and Recreational Facilities (Points)

Facility Name	Address	Zip Code
SHERMAN AV PARK	2117 SHERMAN AVE	32405
SPRING AVENUE WALKING PARK	SPRING AVE	32405
EVERITT AVENUE DOG PARK	1137 EVERITT AVE	32401

Government Building

Facility Name	Address	Zip Code
U S POST OFFICE - PANAMA CITY	1336 SHERMAN AVE	32401

Healthcare Facilities (Geocoded)

Facility Name	Address	Zip Code
COMMUNITY HEALTH CENTER-BAY CO. (PANCARE OF FLORID	2309 E 15TH STREET	32405

Mobile Home Parks in Florida

Facility Name	Address	Zip Code
BARNES TRAILER COURT	1534 EAST AVE	32405
SHERMAN PINES MOBILE HOME PARK	1940 SHERMAN AVE	32405
JOHNSON TP #2	2335 DOUGLAS RD	32405
TWO SISTERS PROPERTIES LLC	2418 E DOUGLAS RD	32405
CEDAR GROVE ADULT MHP	1836 N EAST AVE	32405
SPRING MOBILE HOME PARK	1709 CHAUCER CR	32407
AMMIE'S MOBILE HOME PARK	2300 SHERMAN AVENUE	32405
CORNERSTONE MOBILE HOME PARK	1800 EAST AVE	32405

Public and Private Schools (Points)

Facility Name	Address	Zip Code
CEDAR GROVE ELEMENTARY SCHOOL	2826 E 15TH ST	32401

Religious Centers (Points)

Facility Name	Address	Zip Code
APOSTOLIC PENTECOSTAL CHURCH	2907 E 11TH COURT	32401
NORTHWEST COAST BAPTIST ASSOCIATES	2335 INDUSTRIAL DRIVE	32405
PANAMA CITY RESCUE MISSION	1801 E 11TH STREET	32401

Facility Name	Address	Zip Code
GOSPEL LIGHTHOUSE	2053 SHERMAN AVE	32405
CEDAR GROVE BAPTIST CHURCH	2608 E 15TH STREET	32405
FIRST ASSEMBLY OF GOD	1701 N EAST AVENUE	32405

Social Services (Geocoded)

Facility Name	Address	Zip Code
FLORIDA BAPTIST CHILDRENS HOMES REGIONAL OFFICE/CAMPUS - PANAMA CITY	2335 INDUSTRIAL DR.	32405

US Census Places

Facility Name
Springfield
Cedar Grove
Panama City

Veteran Organizations and Facilities (Points)

Facility Name	Address	Zip Code
VFW POST 2185 - WAINWRIGHT	2136 SHERMAN AVENUE	32405
AMERICAN LEGION POST 66	2230 E 15TH STREET	32405
DISABLED AMERICAN VETERANS CHAPTER 17	2230 E 15TH ST	32405

Block Groups

The following Census Block Groups were used to calculate demographics for this report.

1990 Census Block Groups

120050016004, 120050012001, 120050017002, 120050011001, 120050011003, 120050013004, 120050017003, 120050013005

2000 Census Block Groups

120050016004, 120050013005, 120050011001, 120050017002, 120050013004, 120050016002, 120050017003, 120050012001, 120050011003, 120050013002

2010 Census Block Groups

120050017002, 120050017001, 120050016003, 120050012001, 120050011003, 120050013023, 120050011001, 120050012002, 120050013022

2017 Census Block Groups

120050013023, 120050012002, 120050013022, 120050017002, 120050011003, 120050011001, 120050016003, 120050017001, 120050012001

Data Sources

Area

The geographic area of the community based on a user-specified community boundary or area of interest (AOI) boundary.

Jurisdiction

Jurisdiction(s) includes local government boundaries that intersect the community or AOI boundary.

Demographic Data

Demographic data reported under the headings General Population Trends, Race and Ethnicity Trends, Age Trends, Income Trends, Educational Attainment Trends, Language Trends, and Housing Trends is from the U.S. Decennial Census (1990, 2000) and the American Community Survey (ACS) 5-year estimates from 2006-2010 and 2013-2017. The data was gathered at the block group level for user-specified community boundaries and AOIs, and at the county level for counties. Depending on the dataset, the data represents 100% counts (Census Summary File 1) or sample-based information (Census Summary File 3 or ACS).

About the Census Data:

User-specified community boundaries and AOIs do not always correspond precisely to block group boundaries. In these instances, adjustment of the geographic area and data for affected block groups is required to estimate the actual population. To improve the accuracy of such estimates in the SDR report, the census block group data was adjusted to exclude all census blocks with a population of two or fewer. These areas were eliminated from the corresponding years' block groups. Next, the portion of the block group that lies outside of the community or AOI boundary was removed. The demographics within each block group were then recalculated, assuming an equal area distribution of the population. Note that there may be areas where there is no population.

Use caution when comparing the 100% count data (Decennial Census) to the sample-based data (ACS). In any given year, about one in 40 or 2.5% of U.S. households will receive the ACS questionnaire. Over any five-year period, about

one in eight households will receive the questionnaire, as compared to about one in six that received the long form questionnaire for the Decennial Census 2000. (Source: <http://mcdc.missouri.edu/pub/data/acs/Readme.shtml>) The U.S. Census Bureau provides help with this process:

<https://www.census.gov/programs-surveys/acs/guidance/comparing-acs-data/2017.html>

Use caution when interpreting changes in Race and Ethnicity over time. Starting with the 2000 Decennial Census, respondents were given a new option of selecting one or more race categories. Also in 2000, the placement of the question about Hispanic origin changed, helping to increase responsiveness to the Hispanic-origin question. Because of these and other changes, the 1990 data on race and ethnicity are not directly comparable with data from later censuses. (Source: <http://www.census.gov/prod/2001pubs/c2kbr01-1.pdf>; <http://www.census.gov/pred/www/rpts/Race%20and%20Ethnicity%20FINAL%20report.pdf>)

The "Minority" calculations are derived from Census and ACS data using both the race and ethnicity responses. On this report, "Minority" refers to individuals who list a race other than White and/or list their ethnicity as Hispanic/Latino. In other words, people who are multi-racial, any single race other than White, or Hispanic/Latino of any race are considered minorities.

Disability data is not included in the 2010 Decennial Census, or the 2006-2010 ACS. This data is available in the 2013-2017 ACS.

Because of changes made to the Census and ACS questions between 1990 and 2017, disability variables should not be compared from year to year. For example: 1) With the 1990 data the disabilities are listed as a "work disability" while this distinction is not made with 2000 or 2017 ACS data; 2) The 2017 ACS data includes the institutionalized population (e.g. persons in prisons and group homes), while this population is not included in 1990 or 2000; 3) the age groupings changed over the years.

Please take the following two concerns into account when viewing this data: 1) With the 1990 data the disabilities are listed as a "work disability" while this distinction is not made with 2000 or 2017 ACS data; 2) The 2017 ACS data includes the institutionalized population (e.g. persons in prisons and group homes), while this population is not included in 1990 or 2000.

The category Bachelor's Degree or Higher under the heading Educational Attainment Trends is a subset of the category High School Graduate or Higher.

Income of households. This includes the income of the householder and all other individuals 15 years old and over in the household, whether they are related to the householder or not. Because many households consist of only one person, average household income is usually less than average family income.

Income of families. In compiling statistics on family income, the incomes of all members 15 years old and over related to the householder are summed and treated as a single amount.

Age Trends median age for 1990 is not available.

Land Use Data

The Land Use information Indicates acreages and percentages for the generalized land use types used to group parcel-specific, existing land use assigned by the county property appraiser office according to the Florida Department of Revenue land use codes.

Community Facilities Data

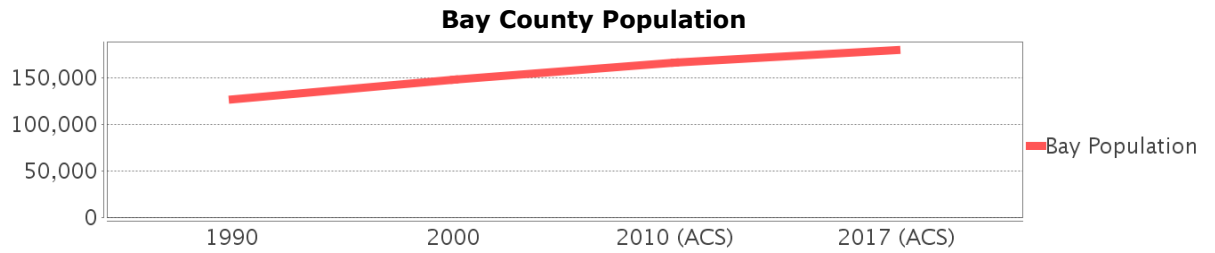
- Assisted Rental Housing Units - Identifies multifamily rental developments that receive funding assistance under federal, state, and local government programs to offer affordable housing as reported by the Shimberg Center for Housing Studies, University of Florida.

- Mobile Home Parks - Identifies approved or acknowledged mobile home parks reported by the Florida Department of Business and Professional Regulation and Florida Department of Health.
- Migrant Camps - Identifies migrant labor camp facilities inspected by the Florida Department of Health.
- Group Care Facilities - Identifies group care facilities inspected by the Florida Department of Health.
- Community Center and Fraternal Association Facilities - Identifies facilities reported by multiple sources.
- Law Enforcement Correctional Facilities - Identifies facilities reported by multiple sources.
- Cultural Centers - Identifies cultural centers including organizations, buildings, or complexes that promote culture and arts (e.g., aquariums and zoological facilities; arboreta and botanical gardens; dinner theaters; drive-ins; historical places and services; libraries; motion picture theaters; museums and art galleries; performing arts centers; performing arts theaters; planetariums; studios and art galleries; and theater producers stage facilities) reported by multiple sources.
- Fire Department and Rescue Station Facilities - Identifies facilities reported by multiple sources.
- Government Buildings - Identifies local, state, and federal government buildings reported by multiple sources.
- Health Care Facilities - Identifies health care facilities including abortion clinics, dialysis clinics, medical doctors, nursing homes, osteopaths, state laboratories/clinics, and surgicenters/walk-in clinics reported by the Florida Department of Health.
- Hospital Facilities - Identifies hospital facilities reported by multiple sources.
- Law Enforcement Facilities - Identifies law enforcement facilities reported by multiple sources.
- Parks and Recreational Facilities - Identifies parks and recreational facilities reported by multiple sources.
- Religious Center Facilities - Identifies religious centers including churches, temples, synagogues, mosques, chapels, centers, and other types of religious facilities reported by multiple sources.
- Private and Public Schools - Identifies private and public schools reported by multiple sources.
- Social Service Centers - Identifies social service centers reported by multiple sources.
- Veteran Organizations and Facilities

Bay County Demographic Profile

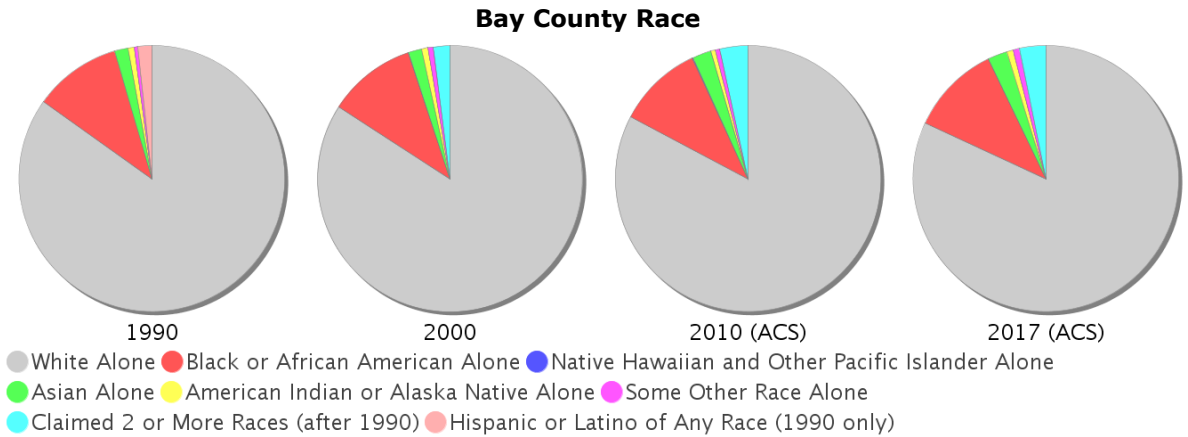
General Population Trends - Bay

Description	1990	2000	2010 (ACS)	2017 (ACS)
Total Population	126,994	148,217	166,798	180,117
Total Households	48,938	59,597	68,807	68,667
Average Persons per Acre	0.257	0.299	0.336	0.363
Average Persons per Household	2.595	2.431	2.00	2.59
Average Persons per Family	3.04	2.995	2.962	3.30
Males	62,562	73,124	82,893	89,542
Females	64,432	75,093	83,905	90,575



Race and Ethnicity Trends - Bay

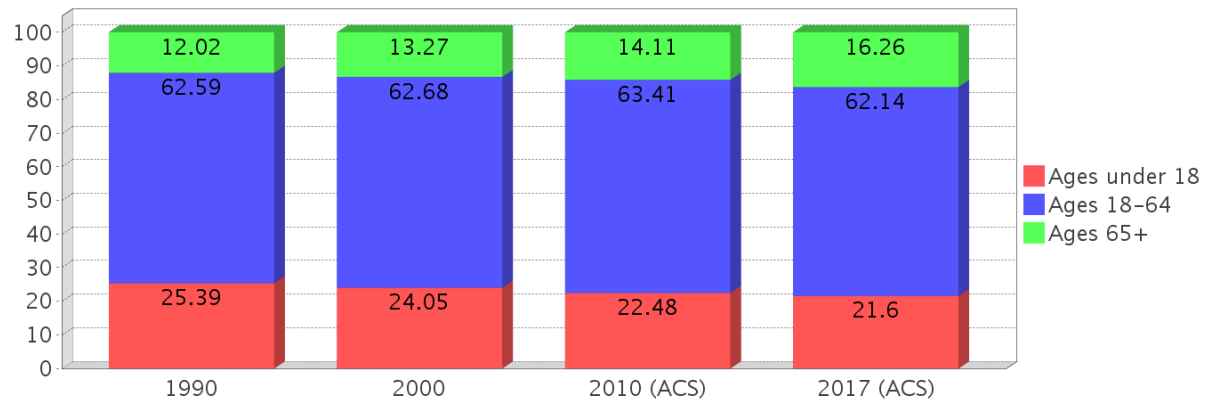
Description	1990	2000	2010 (ACS)	2017 (ACS)
White Alone	109,570 (86.28%)	124,681 (84.12%)	137,959 (82.71%)	147,474 (81.88%)
Black or African American Alone	13,713 (10.80%)	15,944 (10.76%)	17,354 (10.40%)	19,740 (10.96%)
Native Hawaiian and Other Pacific Islander Alone	(NA)	125 (0.08%)	186 (0.11%)	54 (0.03%)
Asian Alone	2,156 (1.70%)	2,369 (1.60%)	3,784 (2.27%)	4,196 (2.33%)
American Indian or Alaska Native Alone	949 (0.75%)	1,130 (0.76%)	923 (0.55%)	1,389 (0.77%)
Some Other Race Alone	533 (0.42%)	1,022 (0.69%)	919 (0.55%)	1,400 (0.78%)
Claimed 2 or More Races	(NA)	2,946 (1.99%)	5,673 (3.40%)	5,864 (3.26%)
Hispanic or Latino of Any Race	2,256 (1.78%)	3,534 (2.38%)	7,527 (4.51%)	10,820 (6.01%)
Not Hispanic or Latino	124,738 (98.22%)	144,683 (97.62%)	159,271 (95.49%)	169,297 (93.99%)
Minority	35,062 (27.61%)	25,554 (17.24%)	35,062 (21.02%)	40,909 (22.71%)



Age Trends - Bay

Description	1990	2000	2010 (ACS)	2017 (ACS)
Under Age 5	7.26%	6.07%	6.39%	6.28%
Ages 5-17	18.14%	17.97%	16.09%	15.32%
Ages 18-21	5.71%	5.08%	5.85%	4.83%
Ages 22-29	13.13%	10.13%	10.47%	11.25%
Ages 30-39	16.57%	15.20%	12.94%	12.87%
Ages 40-49	12.55%	15.81%	14.89%	12.39%
Ages 50-64	14.63%	16.46%	19.27%	20.80%
Age 65 and Over	12.02%	13.27%	14.11%	16.26%
-Ages 65-74	7.69%	7.96%	7.91%	9.42%
-Ages 75-84	3.51%	4.22%	4.67%	4.99%
-Age 85 and Over	0.82%	1.09%	1.53%	1.85%
Median Age	NA	37	39	40

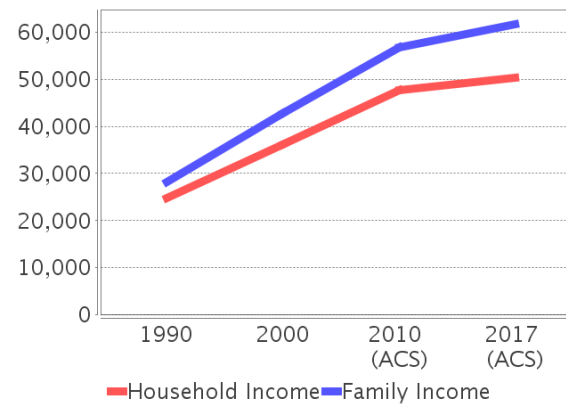
Percentage Population by Age Group - Bay



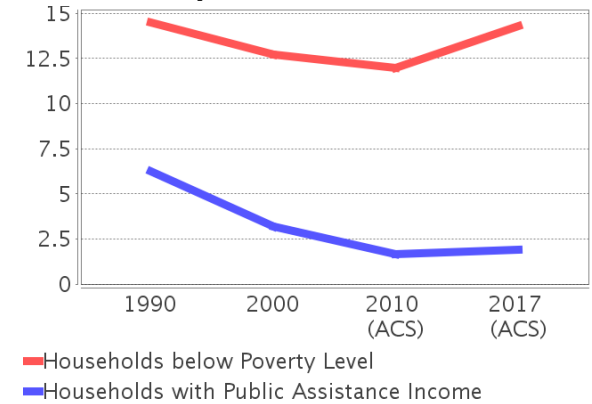
Income Trends - Bay

Description	1990	2000	2010 (ACS)	2017 (ACS)
Median Household Income	\$24,684	\$36,092	\$47,770	\$50,283
Median Family Income	\$28,217	\$42,729	\$56,877	\$61,750
Population below Poverty Level	14.44%	13.04%	12.37%	15.35%
Households below Poverty Level	14.48%	12.69%	11.96%	14.31%
Households with Public Assistance Income	6.25%	3.20%	1.65%	1.93%

Income Trends



Poverty and Public Assistance



Disability Trends - Bay

See the Data Sources section below for an explanation about the differences in disability data among the various years.

Description	1990	2000	2010 (ACS)	2017 (ACS)
Population 16 To 64 Years with a disability	8,863 (9.67%)	19,402 (14.60%)	NA (NA)	NA (NA)
Population 20 To 64 Years with a disability	NA (NA)	NA (NA)	NA (NA)	17,237 (16.15%)

Educational Attainment Trends - Bay

Age 25 and Over

Description	1990	2000	2010 (ACS)	2017 (ACS)
Less than 9th Grade	7,497 (9.09%)	4,970 (4.98%)	4,525 (3.99%)	3,871 (3.08%)
9th to 12th Grade, No Diploma	13,384 (16.23%)	13,946 (13.98%)	10,973 (9.67%)	9,766 (7.77%)
High School Graduate or Higher	61,567 (74.67%)	80,855 (81.04%)	97,924 (86.34%)	112,006 (89.15%)
Bachelor's Degree or Higher	12,942 (15.70%)	17,636 (17.68%)	23,156 (20.42%)	28,085 (22.35%)

Language Trends - Bay

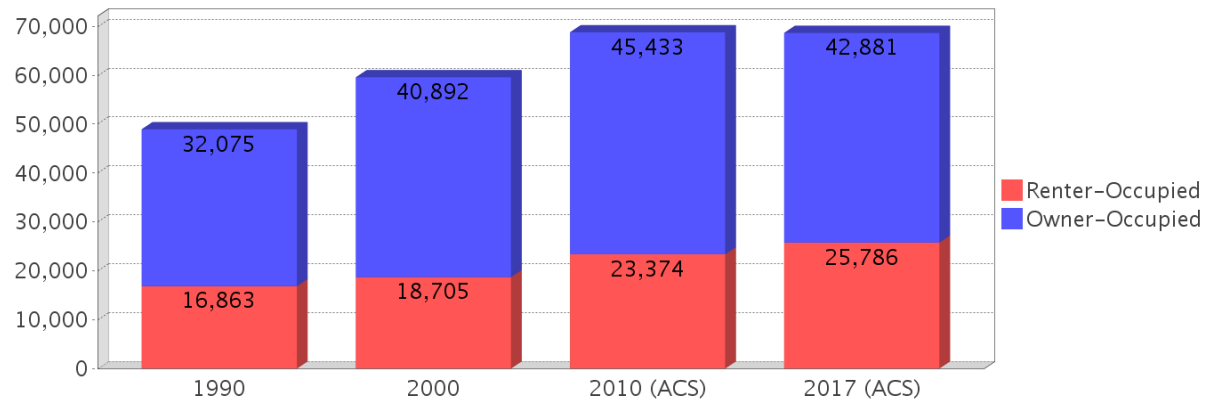
Age 5 and Over

Description	1990	2000	2010 (ACS)	2017 (ACS)
Speaks English Well	1,245 (1.06%)	1,734 (1.25%)	2,069 (1.33%)	2,331 (1.38%)
Speaks English Not Well	NA (NA)	1,134 (0.81%)	1,685 (1.08%)	1,660 (0.98%)
Speaks English Not at All	NA (NA)	88 (0.06%)	359 (0.23%)	376 (0.22%)
Speaks English Not Well or Not at All	757 (0.64%)	1,222 (0.88%)	2,044 (1.31%)	2,036 (1.21%)

Housing Trends - Bay

Description	1990	2000	2010 (ACS)	2017 (ACS)
Total	65,999	78,435	98,291	101,437
Units per Acre	0.133	0.158	0.198	0.205
Single-Family Units	31,850	45,732	55,210	55,465
Multi-Family Units	8,658	19,549	29,871	32,243
Mobile Home Units	8,103	12,926	13,125	13,402
Owner-Occupied Units	32,075	40,892	45,433	42,881
Renter-Occupied Units	16,863	18,705	23,374	25,786
Vacant Units	17,061	18,838	29,484	32,770
Median Housing Value	\$61,000	\$83,700	\$175,500	\$166,400
Occupied Housing Units w/No Vehicle	3,229 (6.60%)	3,958 (6.64%)	3,453 (5.02%)	4,393 (6.40%)

Housing Tenure - Bay



County Data Sources

Demographic data reported is from the U.S. Decennial Census (1990, 2000) and the American Community Survey (ACS) 5-year estimates from 2006-2010 and 2013-2017. The data was gathered at the county level. Depending on the dataset, the data represents 100% counts (Census Summary File 1) or sample-based information (Census Summary File 3 or ACS).

About the Census Data:

Use caution when comparing the 100% count data (Decennial Census) to the sample-based data (ACS). In any given year, about one in 40 or 2.5% of U.S. households will receive the ACS questionnaire. Over any five-year period, about one in eight households will receive the questionnaire, as compared to about one in six that received the long form questionnaire for the Decennial Census 2000. (Source: <http://mcdc.missouri.edu/pub/data/acs/Readme.shtml>) The U.S. Census Bureau provides help with this process:

<https://www.census.gov/programs-surveys/acs/guidance/comparing-acs-data/2017.html>

Use caution when interpreting changes in Race and Ethnicity over time. Starting with the 2000 Decennial Census, respondents were given a new option of selecting one or more race categories. Also in 2000, the placement of the question about Hispanic origin changed, helping to increase responsiveness to the Hispanic-origin question. Because of these and other changes, the 1990 data on race and ethnicity are not directly comparable with data from later censuses. (Source: <http://www.census.gov/prod/2001pubs/c2kbr01-1.pdf>;
<http://www.census.gov/pred/www/rpts/Race%20and%20Ethnicity%20FINAL%20report.pdf>)

The "Minority" calculations are derived from Census and ACS data using both the race and ethnicity responses. On this report, "Minority" refers to individuals who list a race other than White and/or list their ethnicity as Hispanic/Latino. In other words, people who are multi-racial, any single race other than White, or Hispanic/Latino of any race are considered minorities.

Disability data is not included in the 2010 Decennial Census, or the 2006-2010 ACS. This data is available in the 2013-2017 ACS.

Because of changes made to the Census and ACS questions between 1990 and 2017, disability variables should not be compared from year to year. For example: 1) With the 1990 data the disabilities are listed as a "work disability" while this distinction is not made with 2000 or 2017 ACS data; 2) The 2017 ACS data includes the institutionalized population (e.g. persons in prisons and group homes), while this population is not included in 1990 or 2000; 3) the age groupings changed over the years.

Please take the following two concerns into account when viewing this data: 1) With the 1990 data the disabilities are listed as a "work disability" while this distinction is not made with 2000 or 2017 ACS data; 2) The 2017 ACS data includes the institutionalized population (e.g. persons in prisons and group homes), while this population is not included in 1990 or 2000.

source:

<https://www.census.gov/people/disability/methodology/acs.html>

<https://www.census.gov/population/www/cen2000/90vs00/index.html>

The category Bachelor's Degree or Higher under the heading Educational Attainment Trends is a subset of the category High School Graduate or Higher.

Metadata

- Community and Fraternal Centers https://etdmpub.florida-et.org/metadata/gc_communitycenter.htm
- Correctional Facilities in Florida https://etdmpub.florida-et.org/metadata/gc_correctional.htm
- Cultural Centers in Florida https://etdmpub.florida-et.org/metadata/gc_culturecenter.htm
- Fire Department and Rescue Station Facilities in Florida https://etdmpub.florida-et.org/metadata/gc_firestat.htm
- Local, State, and Federal Government Buildings in Florida https://etdmpub.florida-et.org/metadata/gc_govbuild.htm
- Florida Health Care Facilities https://etdmpub.florida-et.org/metadata/gc_health.htm
- Hospital Facilities in Florida https://etdmpub.florida-et.org/metadata/gc_hospitals.htm
- Law Enforcement Facilities in Florida https://etdmpub.florida-et.org/metadata/gc_lawenforce.htm
- Florida Parks and Recreational Facilities https://etdmpub.florida-et.org/metadata/gc_parks.htm
- Religious Centers https://etdmpub.florida-et.org/metadata/gc_religion.htm
- Florida Public and Private Schools https://etdmpub.florida-et.org/metadata/gc_schools.htm
- Social Service Centers https://etdmpub.florida-et.org/metadata/gc_socialservice.htm
- Assisted Rental Housing Units in Florida https://etdmpub.florida-et.org/metadata/gc_assisted_housing.htm
- Group Care Facilities <https://etdmpub.florida-et.org/metadata/groupcare.htm>
- Mobile Home Parks in Florida https://etdmpub.florida-et.org/metadata/gc_mobilehomes.htm
- Migrant Camps in Florida <https://etdmpub.florida-et.org/metadata/migrant.htm>
- Veteran Organizations and Facilities https://etdmpub.florida-et.org/metadata/gc_veterans.htm
- Generalized Land Use - Florida DOT District 3 https://etdmpub.florida-et.org/metadata/d3_lu_gen.htm
- Census Block Groups in Florida https://etdmpub.florida-et.org/metadata/e2_cenacs_cci.htm
- 1990 Census Block Groups in Florida https://etdmpub.florida-et.org/metadata/e2_cenblkgrp_1990_cci.htm
- 2000 Census Block Groups in Florida https://etdmpub.florida-et.org/metadata/e2_cenblkgrp_2000_cci.htm
- 2010 Census Block Groups in Florida https://etdmpub.florida-et.org/metadata/e2_cenblkgrp_2010_cci.htm