

# Sociocultural Data Report

## Celebration

**Area:** 10.554 square miles  
**Jurisdiction(s):** **Cities:** NA  
**Counties:** Osceola

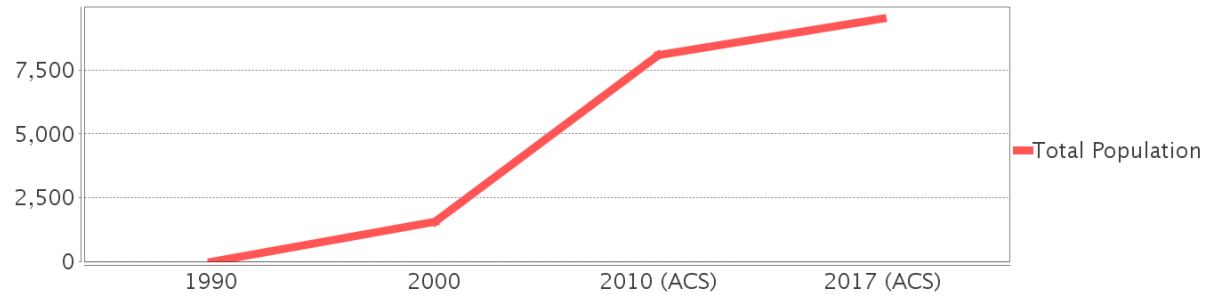
## General Population Trends

Description	1990	2000	2010 (ACS)	2017 (ACS)
Total Population	1	1,545	8,098	9,520
Total Households	0	553	3,091	3,262
Average Persons per Acre	0.19	0.95	0.81	0.98
Average Persons per Household	3.12	2.69	3.00	2.81
Average Persons per Family	3.17	3.38	3.00	3.35
Males	1	731	3,868	4,342
Females	0	813	4,230	5,178

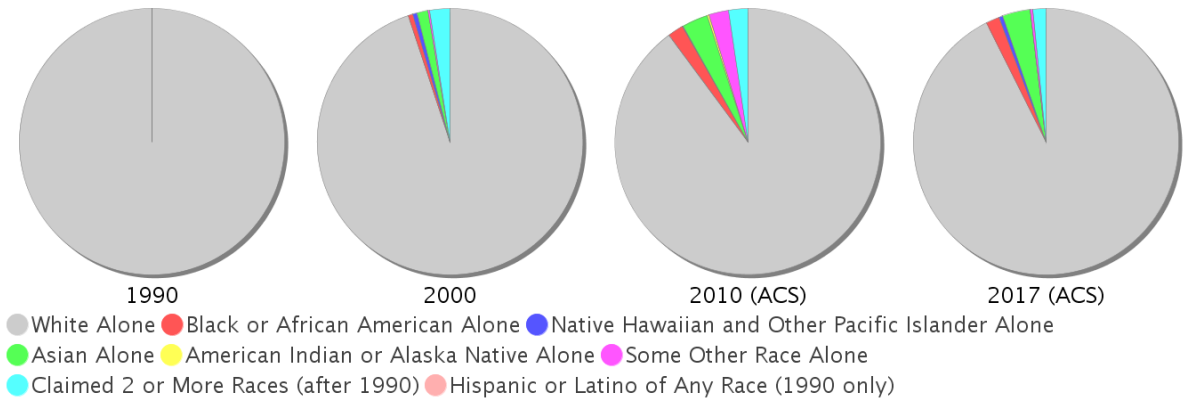
## Race and Ethnicity Trends

Description	1990	2000	2010 (ACS)	2017 (ACS)
White Alone	1 (100.00%)	1,467 (94.95%)	7,277 (89.86%)	8,811 (92.55%)
Black or African American Alone	0 (0.00%)	9 (0.58%)	157 (1.94%)	162 (1.70%)
Native Hawaiian and Other Pacific Islander Alone	0 (0.00%)	8 (0.52%)	4 (0.05%)	44 (0.46%)
Asian Alone	0 (0.00%)	21 (1.36%)	258 (3.19%)	320 (3.36%)
American Indian or Alaska Native Alone	0 (0.00%)	0 (0.00%)	20 (0.25%)	2 (0.02%)
Some Other Race Alone	0 (0.00%)	3 (0.19%)	192 (2.37%)	31 (0.33%)
Claimed 2 or More Races	NA (NA)	38 (2.46%)	191 (2.36%)	149 (1.57%)
Hispanic or Latino of Any Race	0 (0.00%)	95 (6.15%)	1,044 (12.89%)	1,348 (14.16%)
Not Hispanic or Latino	1 (100.00%)	1,450 (93.85%)	7,054 (87.11%)	8,172 (85.84%)
Minority	0 (0.00%)	159 (10.29%)	1,624 (20.05%)	2,020 (21.22%)

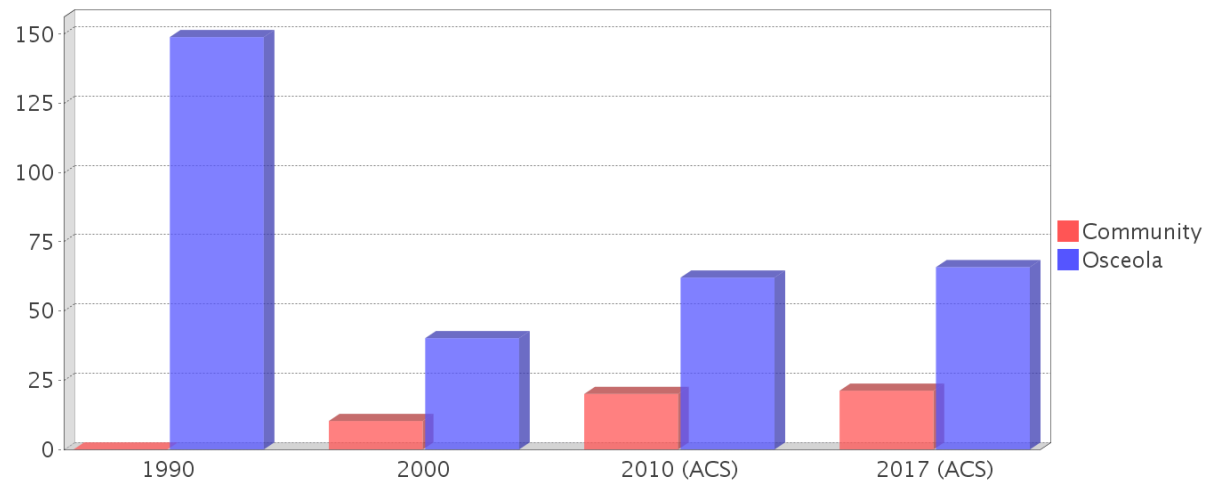
## Population



## Race



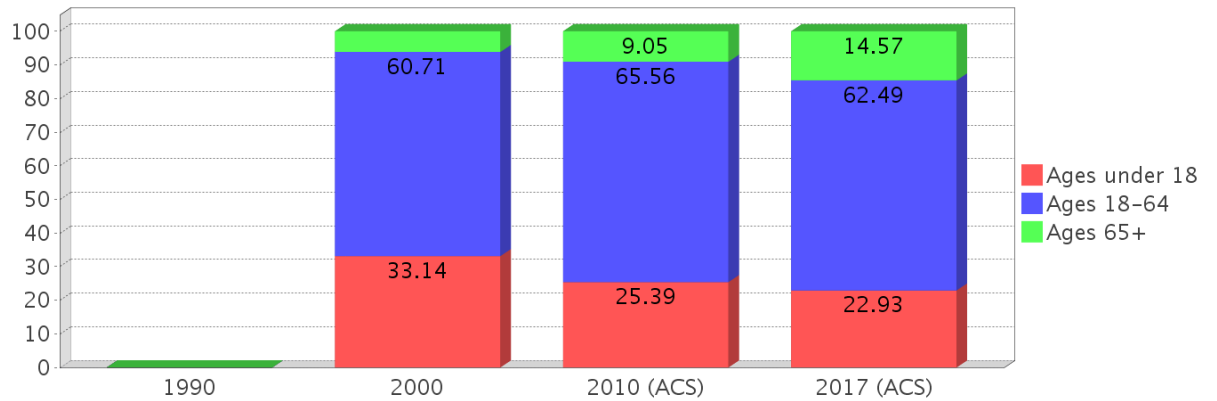
## Minority Percentage Population



### Age Trends

Description	1990	2000	2010 (ACS)	2017 (ACS)
Under Age 5	0.00%	5.95%	5.47%	4.88%
Ages 5-17	0.00%	27.18%	19.92%	18.05%
Ages 18-21	0.00%	3.37%	4.11%	3.37%
Ages 22-29	0.00%	7.96%	9.00%	10.21%
Ages 30-39	0.00%	13.98%	13.24%	13.72%
Ages 40-49	0.00%	19.22%	17.36%	15.27%
Ages 50-64	0.00%	16.18%	21.84%	19.92%
Age 65 and Over	0.00%	6.15%	9.05%	14.57%
-Ages 65-74	0.00%	4.14%	6.31%	10.40%
-Ages 75-84	0.00%	1.62%	2.15%	3.11%
-Age 85 and Over	0.00%	0.39%	0.59%	1.06%
Median Age	NA	32	36	41

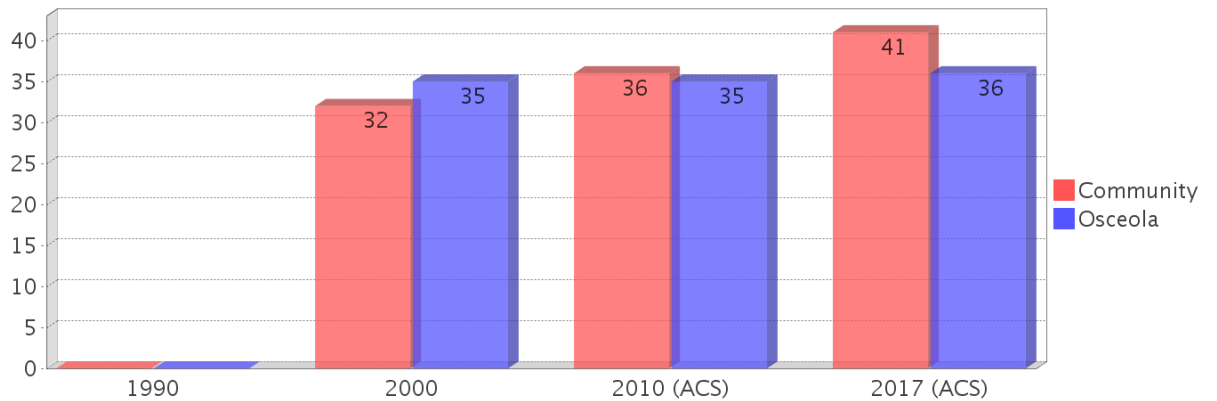
Percentage Population by Age Group



### Income Trends

Description	1990	2000	2010 (ACS)	2017 (ACS)
Median Household Income	\$26,271	\$38,137	\$72,184	\$58,859
Median Family Income	\$26,597	\$42,311	\$59,836	\$69,746
Population below Poverty Level	0.00%	5.50%	4.70%	8.49%
Households below Poverty Level		3.80%	6.28%	7.94%
Households with Public Assistance Income		0.00%	0.36%	0.28%

Median Age Comparison

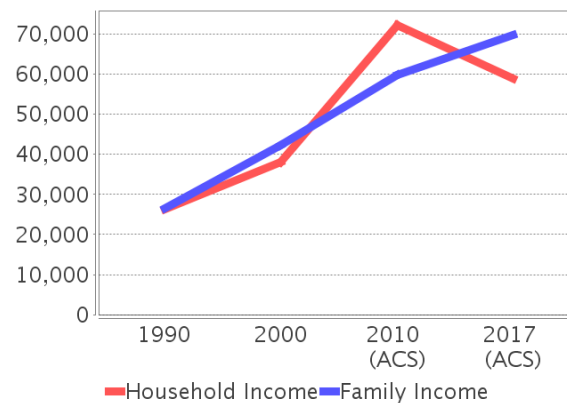


### Disability Trends

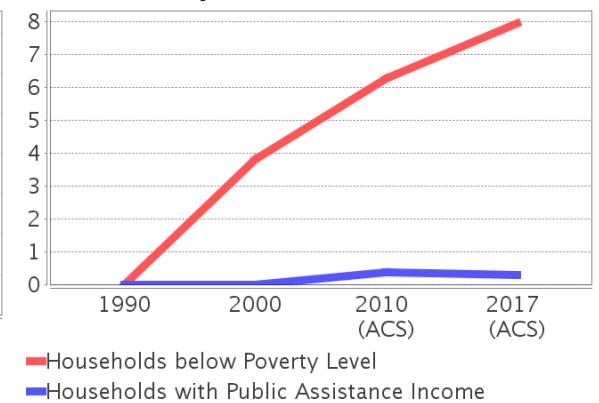
See the Data Sources section below for an explanation about the differences in disability data among the various years.

Description	1990	2000	2010 (ACS)	2017 (ACS)
Population 16 To 64 Years with a disability	0 (0.00%)	166 (11.63%)	(NA)	(NA)
Population 20 To 64 Years with a disability	(NA)	(NA)	(NA)	214 (3.74%)

Income Trends



Poverty and Public Assistance



## Educational Attainment Trends

Age 25 and Over

Description	1990	2000	2010 (ACS)	2017 (ACS)
Less than 9th Grade	0 (0.00%)	19 (2.03%)	45 (0.79%)	82 (1.23%)
9th to 12th Grade, No Diploma	0 (0.00%)	63 (6.72%)	97 (1.71%)	14 (0.21%)
High School Graduate or Higher	0 (0.00%)	857 (91.36%)	5,519 (97.49%)	6,572 (98.55%)
Bachelor's Degree or Higher	0 (0.00%)	508 (54.16%)	3,242 (57.27%)	3,865 (57.95%)

## Language Trends

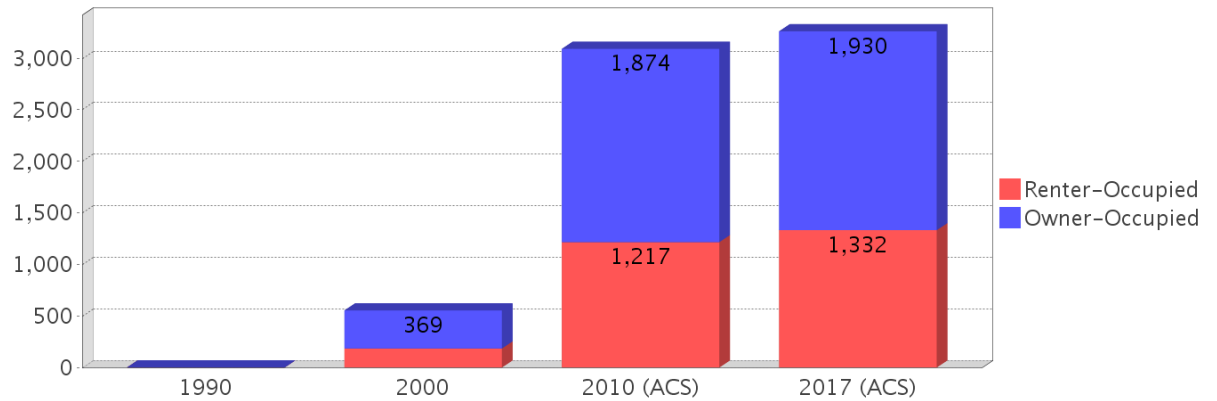
Age 5 and Over

Description	1990	2000	2010 (ACS)	2017 (ACS)
Speaks English Well	0 (0.00%)	37 (2.55%)	114 (1.49%)	329 (3.63%)
Speaks English Not Well	NA (NA)	0 (0.00%)	68 (0.89%)	150 (1.66%)
Speaks English Not at All	NA (NA)	7 (0.48%)	16 (0.21%)	95 (1.05%)
Speaks English Not Well or Not at All	0 (0.00%)	7 (0.48%)	84 (1.10%)	245 (2.71%)

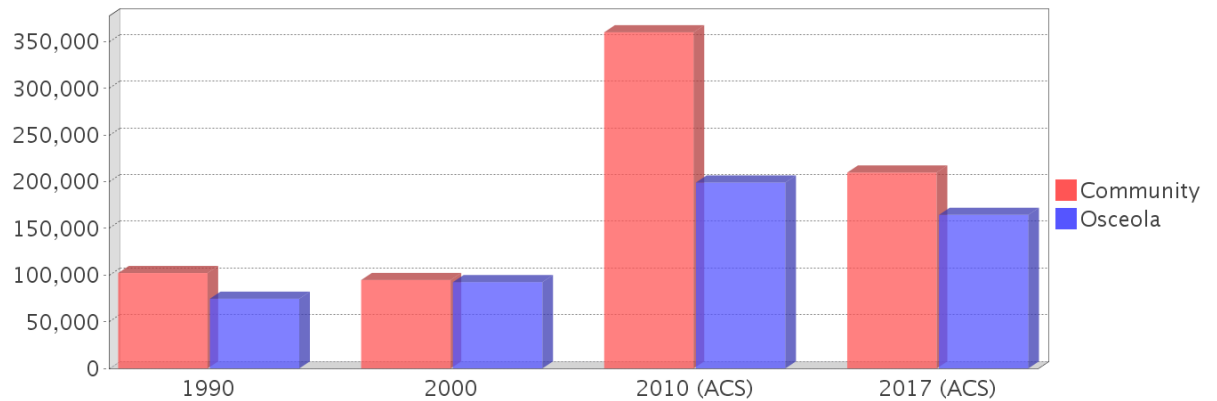
## Housing Trends

Description	1990	2000	2010 (ACS)	2017 (ACS)
Total	1	631	5,666	6,381
Units per Acre	0.08	0.13	1.00	1.12
Single-Family Units	0	446	2,705	3,648
Multi-Family Units	0	159	2,826	2,733
Mobile Home Units	0	21	0	0
Owner-Occupied Units	0	369	1,874	1,930
Renter-Occupied Units	0	184	1,217	1,332
Vacant Units	1	78	2,575	3,118
Median Housing Value	\$102,200	\$94,700	\$360,200	\$209,900
Occupied Housing Units w/No Vehicle	0 ( )	0 (0.00%)	36 (1.16%)	51 (1.56%)

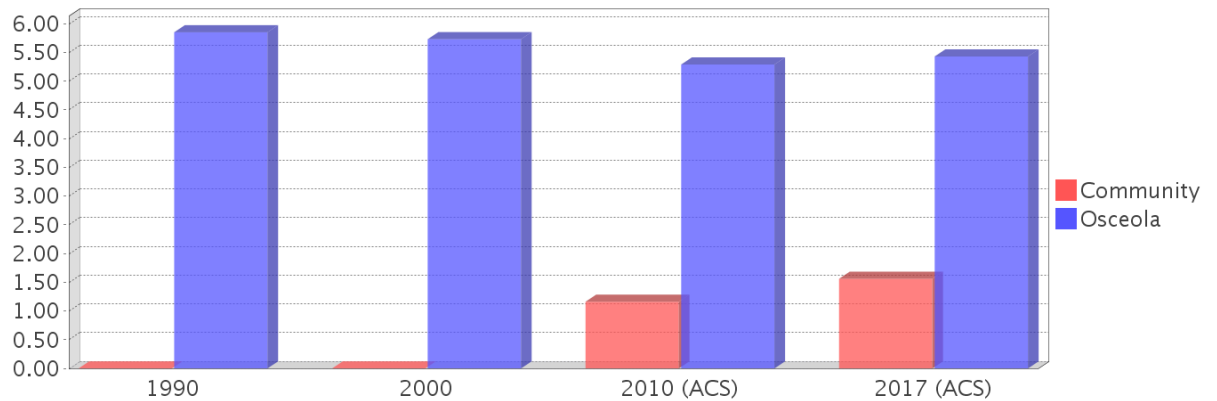
## Housing Tenure



## Median Housing Value Comparison

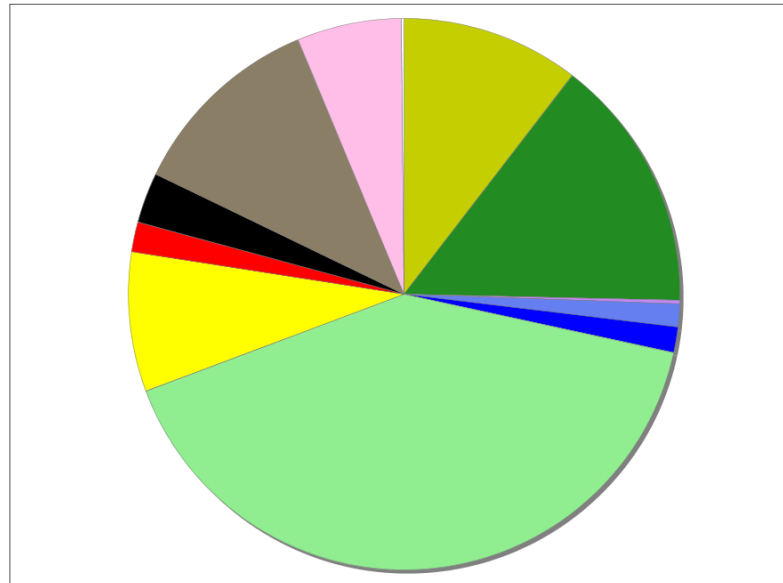


## Occupied Units With No Vehicles Available



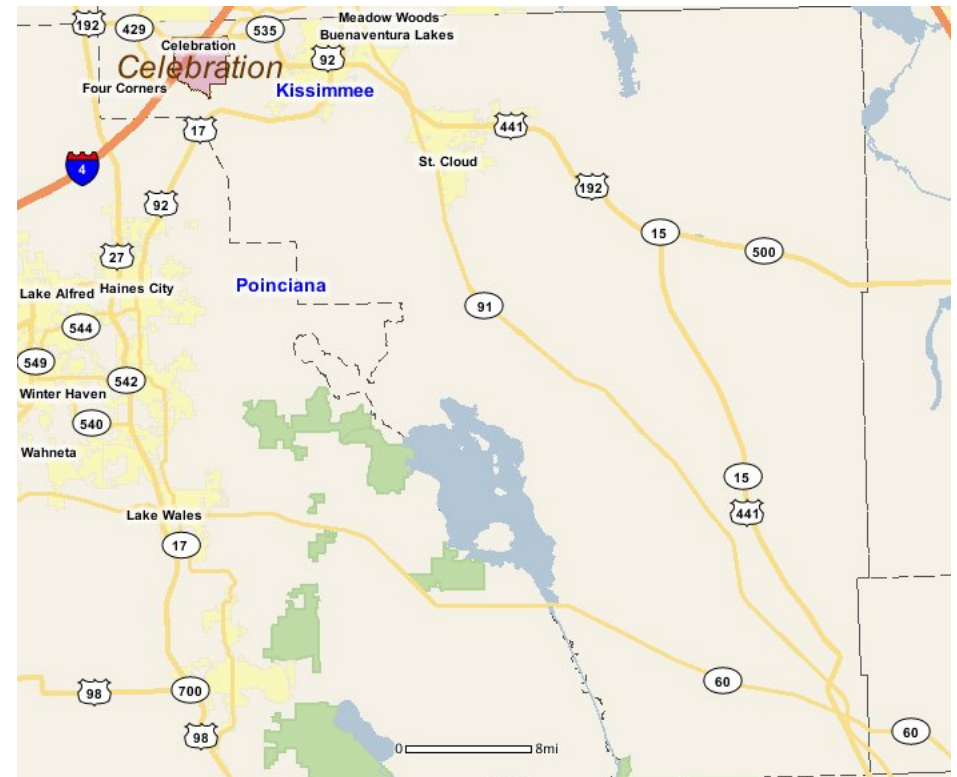
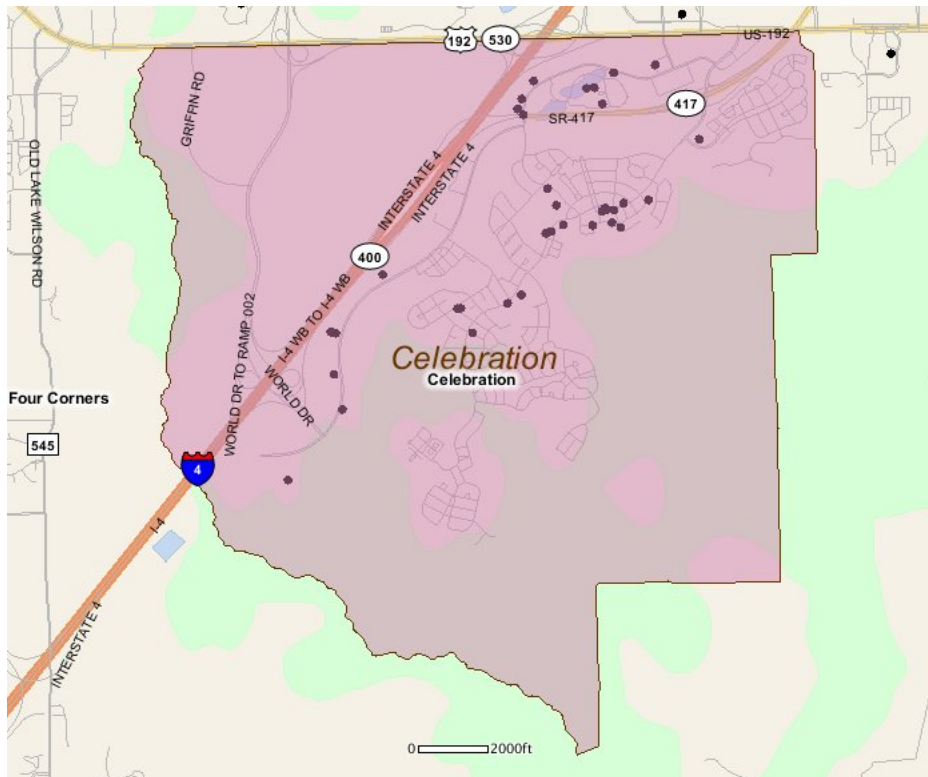
## Existing Land Use

Land Use Type	Acres	Percentage
Acreage Not Zoned For Agriculture	655	9.70%
Agricultural	933	13.81%
Centrally Assessed	0	0.00%
Industrial	13	0.19%
Institutional	85	1.26%
Mining	0	0.00%
Other	0	0.00%
Public/Semi-Public	93	1.38%
Recreation	2,564	37.96%
Residential	511	7.57%
Retail/Office	111	1.64%
Row	184	2.72%
Vacant Residential	724	10.72%
Vacant Nonresidential	385	5.70%
Water	0	0.00%
Parcels With No Values	9	0.13%



- Acreage Not Zoned For Agriculture
- Agricultural
- Centrally Assessed
- Industrial
- Institutional
- Mining
- Other
- Public/Semi-Public
- Recreation
- Residential
- Retail/Office
- Row
- Vacant Residential
- Vacant Nonresidential
- Water
- Parcels With No Values

## Location Maps



## Community Facilities

The community facilities information below is useful in a variety of ways for environmental evaluations. These community resources should be evaluated for potential sociocultural effects, such as accessibility and relocation potential. The facility types may indicate the types of population groups present in the project study area. Facility staff and leaders can be sources of community information such as who uses the facility and how it is used. Additionally, community facilities are potential public meeting venues.

### Community Centers (Points)

Facility Name	Address	Zip Code
KNIGHTS OF COLUMBUS 14132 - CORPUS CHRISTI	1050 CELEBRATION AVE	34747

### Cultural Centers (Points)

Facility Name	Address	Zip Code
DISNEY DESTINATIONS - MARKETING RESOURCE CENTER LIBRARY	1390 CELEBRATION BLVD	34747
AMC - CELEBRATION	651 FRONT ST	34747

### Fire Stations (Points)

Facility Name	Address	Zip Code
OSCEOLA COUNTY FIRE DEPARTMENT AND RESCUE STATION 72 (CELEBRATION)	595 CELEBRATION PL	34747
OSCEOLA COUNTY FIRE DEPARTMENT STATION (CELEBRATION SOUTH) (PROPOSED)		34747

### Government Building

Facility Name	Address	Zip Code
U S POST OFFICE - CELEBRATION	601 MARKET ST	34747
TOWN OF CELEBRATION TOWN HALL	851 CELEBRATION AVE	34747

### Healthcare Facilities (Geocoded)

Facility Name	Address	Zip Code
QUEST DIAGNOSTICS INC	1530 CELEBRATION BOULEVARD, SUITE 102	34747
NEUROLOGICAL INSTITUTE	400 CELEBRATION PLACE, SUITE A-280	34747
UROLOGY HEALTH SOLUTIONS, INC.	410 CELEBRATION PLACE, SUITE 203	34747
ADVANCED MINIMALLY INVASIVE & BARIATRIC	410 CELEBRATION PLACE #401 PL, SUITE 401	34747
HEAD AND NECK SURGERY CENTER OF FLORIDA	410 CELEBRATION PLACE, SUITE 305	34747
RIPPE LIFESTYLE INSTITUTE	215 CELEBRATION PLACE, SUITE 300	34747
FAMILY MEDICINE OF CELEBRATION	1530 CELEBRATION BOULEVARD, SUITE 101	34747
ADVANCED INTERNAL MEDICINE OF CELEBRATION	741 FRONT STREET, SUITE 220	34747
PREMIER HEMATOLOGY AND ONCOLOGY	400 CELEBRATION PLACE, SUITE A270	34747
FLORIDA CENTER FOR PEDIATRIC UROLOGY	1530 CELEBRATION BOULEVARD, SUITE 101	34747
ADVANCED ALLERGY AND ASTHMA SPECIALISTS	1530 CELEBRATION BOULEVARD, SUITE 402	34747
FLORIDA CENTER FOR PEDIATRIC ENDOCRINOLOGY, DIABET	1530 CELEBRATION BOULEVARD, SUITE 101	34747
PERSONALIZED PRIMARY CARE	602 FRONT STREET	34747
FLORIDA EAR & BALANCE CENTER	410 CELEBRATION PLACE, SUITE 100	34747
INTERNAL MEDICINE & PEDIATRICS OF CELEBRATION	410 CELEBRATION PLACE, SUITE 103	34747
CENTER FOR REPRODUCTIVE MEDICINE	410 CELEBRATION PLACE, SUITE 205	34747
CENTER FOR GLOBAL ROBOTIC & MINIMALLY INVASIVE UR	410 CELEBRATION PLACE, SUITE 200	34747
CELEBRATION DIALYSIS	1154 CELEBRATION BOULEVARD 170	34747
ENDOCRINOLOGY AND METABOLIC MEDICINE	410 CELEBRATION PLACE, SUITE 306	34747
THE CENTER FOR OBESITY MEDICINE	410 CELEBRATION PLACE, SUITE 302	34747
FHMG DBA FLORIDA BREAST HEALTH SPECIALIST	380 CELEBRATION PLACE	34747
CENTER FOR SPECIALIZED GYNECOLOGY	380 CELEBRATION PLACE	34747
ADVANCED LAPAROSCOPIC SURGEONS	400 CELEBRATION PLACE, SUITE A140	34747
FLORIDA EAR NOSE & THROAT	400 CELEBRATION PLACE, SUITE A-120	34747
EAR, NOSE, THROAT & PLASTIC SURGERY	400 CELEBRATION PLACE, SUITE A-120	34747

Facility Name	Address	Zip Code
CENTRAL FLORIDA SURGICAL SPECIALISTS	400 CELEBRATION PLACE, SUITE A-120	34747
FLORIDA LUNG ASTHMA & SLEEP SPEC.	400 CELEBRATION PLACE, SUITE A110	34747
CELEBRATION INST. OF ANESTHETIC SURGERY	400 CELEBRATION PLACE, SUITE A-320	34747
DERMATOLOGY & SKIN SURGERY CENTER	410 CELEBRATION PLACE, SUITE 301	34747
CELEBRATION PEDIATRICS LLC	410 CELEBRATION PLACE, SUITE 206	34747
JERRY A. RUBIN, MD	410 CELEBRATION PLACE 300	34747
FAMILY PRACTICE AND PEDIATRICS OF CELEBRATION	1530 CELEBRATION BOULEVARD, SUITE 408	34747
TOWN CENTER MEDICAL	610 SYCAMORE STREET, SUITE 130	34747
ASSOCIATES IN DERMATOLOGY	400 CELEBRATION PLACE, SUITE A-120	34747
CELEBRATION INTERNAL MEDICINE	400 CELEBRATION PLACE A-350	34747
DIGESTIVE HEALTH CENTER OF CELEBRATION	400 CELEBRATION PLACE, SUITE A360	34747
CELEBRATION ORTHOPEDICS & SPORTS MEDICINE	410 CELEBRATION PLACE, SUITE 106	34747
CELEBRATION HEALTH OUTPATIENT SURGERY	410 CELEBRATION PLACE, SUITE 408	34747
A PLACE FOR WOMEN	380 CELEBRATION PLACE	34747
ADVANCED PEDIATRIC SURGICAL SPECIALISTS	1530 CELEBRATION BOULEVARD, SUITE 101	34747
MCCARUS SURGICAL SPECIALISTS FOR WOMEN	400 CELEBRATION PLACE, SUITE A310	34747
OBSTETRICS AND GYNECOLOGY ASSOCIATES	400 CELEBRATION PLACE, SUITE A-130	34747
ADVANCED GASTROENTEROLOGICAL ASSOC.	410 CELEBRATION PLACE, SUITE 400	34747
UROLOGY CENTER OF CENTRAL FLORIDA	400 CELEBRATION AVENUE, SUITE A240	34747
CELEBRATION HEALTH ASSESSMENT	400 CELEBRATION PLACE, SUITE C-200	34747
CELEBRATION OBSTETRICS & GYN. ASSOC.	410 CELEBRATION PLACE, SUITE 208	34747

### Hospitals (Points)

Facility Name	Address	Zip Code
FLORIDA HOSPITAL CELEBRATION HEALTH	400 CELEBRATION PL	34747

### Public and Private Schools (Points)

Facility Name	Address	Zip Code
FOREIGN LANGUAGE IMMERSION PREPARATORY ACADEMY	1530 CELEBRATION BLVD., STE103	34747
CELEBRATION SCHOOL	510 CAMPUS ST	34747
CELEBRATION HIGH SCHOOL	1809 CELEBRATION BLVD	34747
CREATION KIDS VILLAGE	599 CELEBRATION PLACE	34747
LEARNING TRAILS	660 CELEBRATION AVENUE, SUITE 150	34747
MONTESSORI SCHOOL OF CELEBRATION	901 BEGONIA ROAD	34747
STETSON UNIVERSITY	800 CELEBRATION AVE	34747

### Religious Centers (Points)

Facility Name	Address	Zip Code
CELEBRATION COMMUNITY CHURCH	1201 CELEBRATION AVE	34747
CELEBRATION COMMUNITY ASSOCIATION	851 CELEBRATION AVENUE	34747
CORPUS CHRISTI CATHOLIC CHURCH	610 SYCAMORE STREET SUITE 240	34747
CELEBRATE FAMILY CHURCH	1103 CELEBRATION AVE	34747
COMMUNITY PRESBYTERIAN CHURCH	511 CELEBRATION AVENUE	34747
CORPUS CHRISTI CHURCH	1050 CELEBRATION AVE	34747

### US Census Places

Facility Name
Celebration

---

## Block Groups

The following Census Block Groups were used to calculate demographics for this report.

### 1990 Census Block Groups

120970401013, 120970401012

### 2000 Census Block Groups

120970408003, 120970408001

### 2010 Census Block Groups

120970408011, 120970408021, 120970408031

### 2017 Census Block Groups

120970408011, 120970408021, 120970408031

---

## Data Sources

### Area

The geographic area of the community based on a user-specified community boundary or area of interest (AOI) boundary.

### Jurisdiction

Jurisdiction(s) includes local government boundaries that intersect the community or AOI boundary.

### Demographic Data

Demographic data reported under the headings General Population Trends, Race and Ethnicity Trends, Age Trends, Income Trends, Educational Attainment Trends, Language Trends, and Housing Trends is from the U.S. Decennial Census (1990, 2000) and the American Community Survey (ACS) 5-year estimates from 2006-2010 and 2013-2017. The data was gathered at the block group level for user-specified community boundaries and AOIs, and at the county level for counties. Depending on the dataset, the data represents 100% counts (Census Summary File 1) or sample-based information (Census Summary File 3 or ACS).

### About the Census Data:

User-specified community boundaries and AOIs do not always correspond precisely to block group boundaries. In these instances, adjustment of the geographic area and data for affected block groups is required to estimate the actual population. To improve the accuracy of such estimates in the SDR report, the census block group data was adjusted to exclude all census blocks with a population of two or fewer. These areas were eliminated from the corresponding years' block groups. Next, the portion of the block group that lies outside of the community or AOI boundary was removed. The demographics within each block group were then recalculated, assuming an equal area distribution of the population. Note that there may be areas where there is no population.

Use caution when comparing the 100% count data (Decennial Census) to the sample-based data (ACS). In any given year, about one in 40 or 2.5% of U.S. households will receive the ACS questionnaire. Over any five-year period, about one in eight households will receive the questionnaire, as compared to about one in six that received the long form questionnaire for the Decennial Census 2000. (Source: <http://mcdc.missouri.edu/pub/data/acs/Readme.shtml>) The U.S. Census Bureau provides help with this process:

<https://www.census.gov/programs-surveys/acs/guidance/comparing-acs-data/2017.html>

Use caution when interpreting changes in Race and Ethnicity over time. Starting with the 2000 Decennial Census, respondents were given a new option of selecting one or more race categories. Also in 2000, the placement of the question about Hispanic origin changed, helping to increase responsiveness to the Hispanic-origin question. Because of these and other changes, the 1990 data on race and ethnicity are not directly comparable with data from later censuses. (Source: <http://www.census.gov/prod/2001pubs/c2kbr01-1.pdf>; <http://www.census.gov/pred/www/rpts/Race%20and%20Ethnicity%20FINAL%20report.pdf>)

The "Minority" calculations are derived from Census and ACS data using both the race and ethnicity responses. On this report, "Minority" refers to individuals who list a race other than White and/or list their ethnicity as Hispanic/Latino. In other words, people who are multi-racial, any single race other than White, or Hispanic/Latino of any race are considered minorities.

Disability data is not included in the 2010 Decennial Census, or the 2006-2010 ACS. This data is available in the 2013-2017 ACS.

Because of changes made to the Census and ACS questions between 1990 and 2017, disability variables should not be compared from year to year. For example: 1) With the 1990 data the disabilities are listed as a "work disability" while this distinction is not made with 2000 or 2017 ACS data; 2) The 2017 ACS data includes the institutionalized population (e.g. persons in prisons and group homes), while this population is not included in 1990 or 2000; 3) the age groupings changed over the years.

Please take the following two concerns into account when viewing this data: 1) With the 1990 data the disabilities are listed as a "work disability" while this distinction is not made with 2000 or 2017 ACS data; 2) The 2017 ACS data includes the institutionalized population (e.g. persons in prisons and group homes), while this population is not included in 1990 or 2000.

The category Bachelor's Degree or Higher under the heading Educational Attainment Trends is a subset of the category High School Graduate or Higher.

Income of households. This includes the income of the householder and all other individuals 15 years old and over in the household, whether they are related to the householder or not. Because many households consist of only one person, average household income is usually less than average family income.

Income of families. In compiling statistics on family income, the incomes of all members 15 years old and over related to the householder are summed and treated as a single amount.

Age Trends median age for 1990 is not available.

### **Land Use Data**

The Land Use information Indicates acreages and percentages for the generalized land use types used to group parcel-specific, existing land use assigned by the county property appraiser office according to the Florida Department of Revenue land use codes.

### **Community Facilities Data**

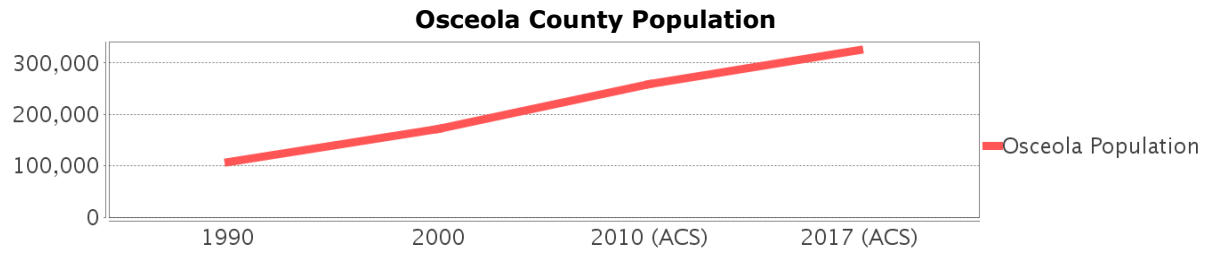
- Assisted Rental Housing Units - Identifies multifamily rental developments that receive funding assistance under federal, state, and local government programs to offer affordable housing as reported by the Shimberg Center for Housing Studies, University of Florida.
- Mobile Home Parks - Identifies approved or acknowledged mobile home parks reported by the Florida Department of Business and Professional Regulation and Florida Department of Health.
- Migrant Camps - Identifies migrant labor camp facilities inspected by the Florida Department of Health.
- Group Care Facilities - Identifies group care facilities inspected by the Florida Department of Health.

- Community Center and Fraternal Association Facilities - Identifies facilities reported by multiple sources.
- Law Enforcement Correctional Facilities - Identifies facilities reported by multiple sources.
- Cultural Centers - Identifies cultural centers including organizations, buildings, or complexes that promote culture and arts (e.g., aquariums and zoological facilities; arboreta and botanical gardens; dinner theaters; drive-ins; historical places and services; libraries; motion picture theaters; museums and art galleries; performing arts centers; performing arts theaters; planetariums; studios and art galleries; and theater producers stage facilities) reported by multiple sources.
- Fire Department and Rescue Station Facilities - Identifies facilities reported by multiple sources.
- Government Buildings - Identifies local, state, and federal government buildings reported by multiple sources.
- Health Care Facilities - Identifies health care facilities including abortion clinics, dialysis clinics, medical doctors, nursing homes, osteopaths, state laboratories/clinics, and surgicenters/walk-in clinics reported by the Florida Department of Health.
- Hospital Facilities - Identifies hospital facilities reported by multiple sources.
- Law Enforcement Facilities - Identifies law enforcement facilities reported by multiple sources.
- Parks and Recreational Facilities - Identifies parks and recreational facilities reported by multiple sources.
- Religious Center Facilities - Identifies religious centers including churches, temples, synagogues, mosques, chapels, centers, and other types of religious facilities reported by multiple sources.
- Private and Public Schools - Identifies private and public schools reported by multiple sources.
- Social Service Centers - Identifies social service centers reported by multiple sources.
- Veteran Organizations and Facilities

# Osceola County Demographic Profile

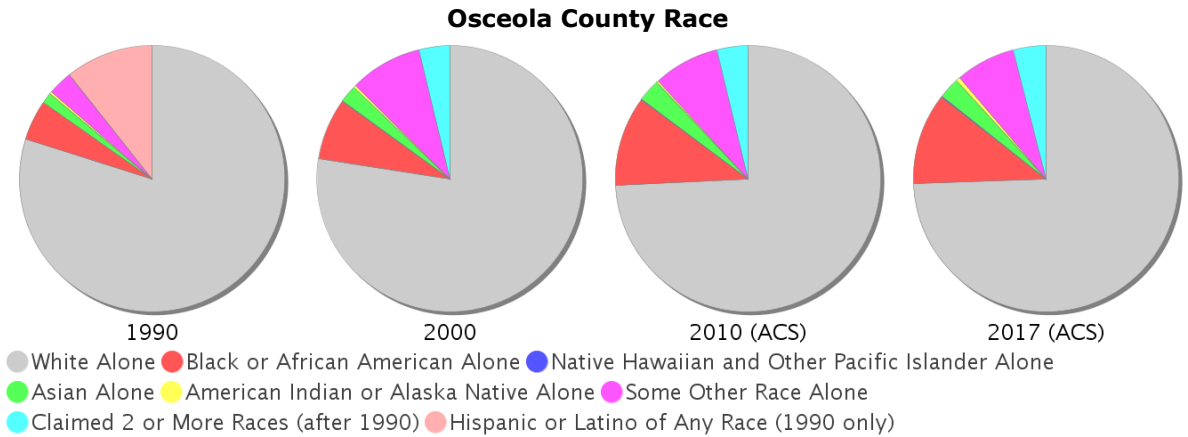
## General Population Trends - Osceola

Description	1990	2000	2010 (ACS)	2017 (ACS)
Total Population	107,728	172,493	258,531	325,168
Total Households	39,150	60,977	92,526	96,250
Average Persons per Acre	0.112	0.179	0.268	0.337
Average Persons per Household	2.752	2.79	3.00	3.36
Average Persons per Family	3.152	3.296	3.233	3.995
Males	52,716	85,185	126,812	160,216
Females	55,012	87,308	131,719	164,952



## Race and Ethnicity Trends - Osceola

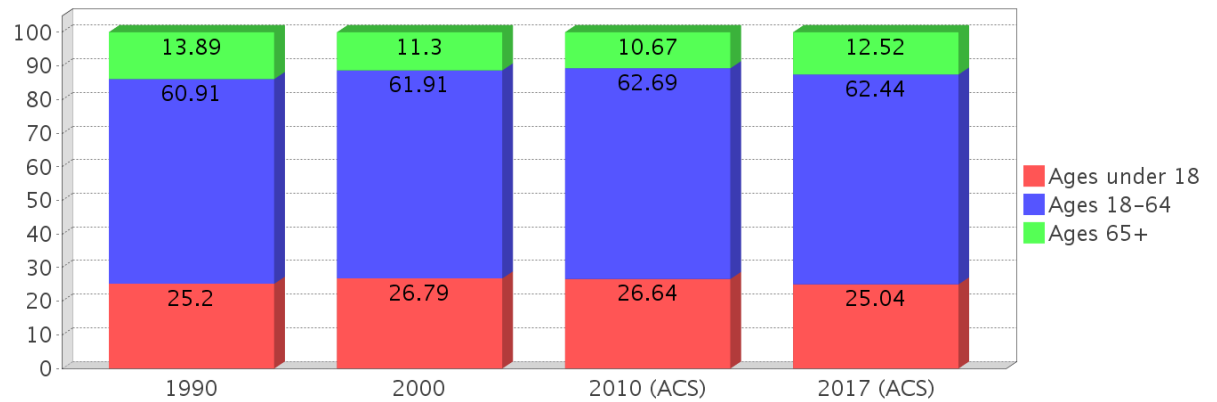
Description	1990	2000	2010 (ACS)	2017 (ACS)
White Alone	96,231 (89.33%)	133,590 (77.45%)	191,793 (74.19%)	241,940 (74.40%)
Black or African American Alone	5,902 (5.48%)	12,873 (7.46%)	28,224 (10.92%)	36,275 (11.16%)
Native Hawaiian and Other Pacific Islander Alone	(NA)	103 (0.06%)	283 (0.11%)	418 (0.13%)
Asian Alone	1,571 (1.46%)	3,642 (2.11%)	7,090 (2.74%)	8,252 (2.54%)
American Indian or Alaska Native Alone	360 (0.33%)	493 (0.29%)	594 (0.23%)	1,573 (0.48%)
Some Other Race Alone	3,598 (3.34%)	15,286 (8.86%)	20,727 (8.02%)	23,691 (7.29%)
Claimed 2 or More Races	(NA)	6,506 (3.77%)	9,820 (3.80%)	13,019 (4.00%)
Hispanic or Latino of Any Race	12,866 (11.94%)	50,742 (29.42%)	112,439 (43.49%)	167,797 (51.60%)
Not Hispanic or Latino	94,862 (88.06%)	121,751 (70.58%)	146,092 (56.51%)	157,371 (48.40%)
Minority	160,393 (148.89%)	69,306 (40.18%)	160,393 (62.04%)	214,056 (65.83%)



### Age Trends - Osceola

Description	1990	2000	2010 (ACS)	2017 (ACS)
Under Age 5	7.34%	6.65%	6.87%	6.47%
Ages 5-17	17.86%	20.14%	19.77%	18.57%
Ages 18-21	5.74%	4.99%	5.73%	5.33%
Ages 22-29	12.81%	11.16%	10.65%	11.45%
Ages 30-39	16.19%	16.18%	14.33%	13.83%
Ages 40-49	12.71%	14.88%	15.16%	14.43%
Ages 50-64	13.45%	14.70%	16.81%	17.41%
Age 65 and Over	13.89%	11.30%	10.67%	12.52%
-Ages 65-74	8.33%	6.38%	6.33%	7.68%
-Ages 75-84	4.19%	3.75%	3.37%	3.37%
-Age 85 and Over	1.38%	1.17%	0.97%	1.47%
Median Age	NA	35	35	36

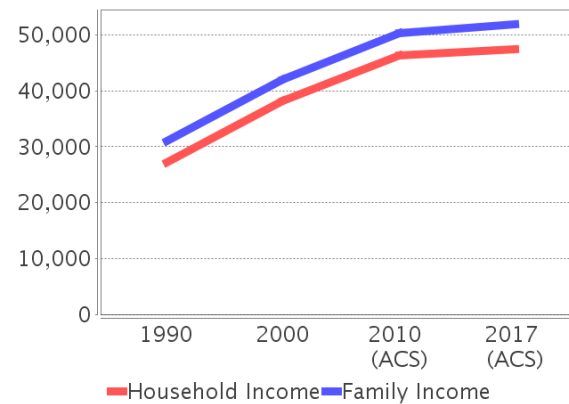
Percentage Population by Age Group - Osceola



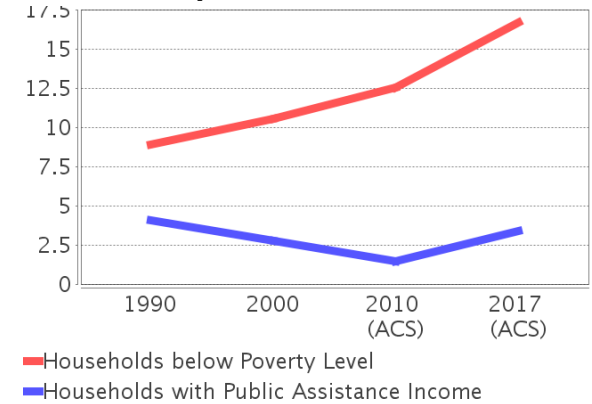
### Income Trends - Osceola

Description	1990	2000	2010 (ACS)	2017 (ACS)
Median Household Income	\$27,260	\$38,214	\$46,328	\$47,343
Median Family Income	\$31,006	\$42,061	\$50,203	\$51,905
Population below Poverty Level	9.39%	11.52%	13.25%	17.79%
Households below Poverty Level	8.91%	10.59%	12.57%	16.70%
Households with Public Assistance Income	4.11%	2.78%	1.47%	3.39%

Income Trends



Poverty and Public Assistance



### Disability Trends - Osceola

See the Data Sources section below for an explanation about the differences in disability data among the various years.

Description	1990	2000	2010 (ACS)	2017 (ACS)
Population 16 To 64 Years with a disability	5,763 (7.01%)	24,744 (15.56%)	NA (NA)	NA (NA)
Population 20 To 64 Years with a disability	NA (NA)	NA (NA)	NA (NA)	25,071 (12.95%)

## Educational Attainment Trends - Osceola

Age 25 and Over

Description	1990	2000	2010 (ACS)	2017 (ACS)
Less than 9th Grade	6,200 (8.83%)	6,810 (6.16%)	10,668 (6.48%)	11,540 (5.43%)
9th to 12th Grade, No Diploma	12,307 (17.52%)	16,285 (14.72%)	15,080 (9.16%)	18,148 (8.54%)
High School Graduate or Higher	51,737 (73.65%)	87,512 (79.12%)	138,898 (84.36%)	182,879 (86.03%)
Bachelor's Degree or Higher	7,873 (11.21%)	17,416 (15.75%)	30,086 (18.27%)	40,391 (19.00%)

## Language Trends - Osceola

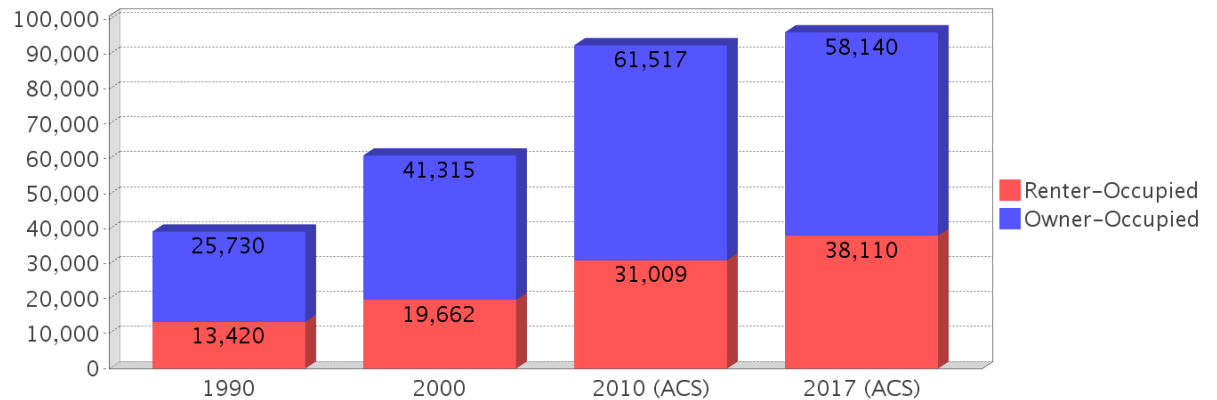
Age 5 and Over

Description	1990	2000	2010 (ACS)	2017 (ACS)
Speaks English Well	3,735 (3.74%)	12,514 (7.77%)	22,965 (9.54%)	26,583 (8.74%)
Speaks English Not Well	NA (NA)	7,938 (4.93%)	16,582 (6.89%)	19,000 (6.25%)
Speaks English Not at All	NA (NA)	2,437 (1.51%)	5,376 (2.23%)	10,432 (3.43%)
Speaks English Not Well or Not at All	2,530 (2.54%)	10,375 (6.44%)	21,958 (9.12%)	29,432 (9.68%)

## Housing Trends - Osceola

Description	1990	2000	2010 (ACS)	2017 (ACS)
Total	47,959	72,293	122,823	139,796
Units per Acre	0.05	0.075	0.127	0.145
Single-Family Units	23,390	46,340	79,778	91,896
Multi-Family Units	7,666	14,477	29,807	36,640
Mobile Home Units	7,802	10,989	12,794	11,154
Owner-Occupied Units	25,730	41,315	61,517	58,140
Renter-Occupied Units	13,420	19,662	31,009	38,110
Vacant Units	8,809	11,316	30,297	43,546
Median Housing Value	\$74,700	\$92,500	\$199,200	\$164,500
Occupied Housing Units w/No Vehicle	2,291 (5.85%)	3,492 (5.73%)	4,897 (5.29%)	5,229 (5.43%)

## Housing Tenure - Osceola



---

## County Data Sources

Demographic data reported is from the U.S. Decennial Census (1990, 2000) and the American Community Survey (ACS) 5-year estimates from 2006-2010 and 2013-2017. The data was gathered at the county level. Depending on the dataset, the data represents 100% counts (Census Summary File 1) or sample-based information (Census Summary File 3 or ACS).

### About the Census Data:

Use caution when comparing the 100% count data (Decennial Census) to the sample-based data (ACS). In any given year, about one in 40 or 2.5% of U.S. households will receive the ACS questionnaire. Over any five-year period, about one in eight households will receive the questionnaire, as compared to about one in six that received the long form questionnaire for the Decennial Census 2000. (Source: <http://mcdc.missouri.edu/pub/data/acs/Readme.shtml>) The U.S. Census Bureau provides help with this process:

<https://www.census.gov/programs-surveys/acs/guidance/comparing-acs-data/2017.html>

Use caution when interpreting changes in Race and Ethnicity over time. Starting with the 2000 Decennial Census, respondents were given a new option of selecting one or more race categories. Also in 2000, the placement of the question about Hispanic origin changed, helping to increase responsiveness to the Hispanic-origin question. Because of these and other changes, the 1990 data on race and ethnicity are not directly comparable with data from later censuses. (Source: <http://www.census.gov/prod/2001pubs/c2kbr01-1.pdf>;  
<http://www.census.gov/pred/www/rpts/Race%20and%20Ethnicity%20FINAL%20report.pdf>)

The "Minority" calculations are derived from Census and ACS data using both the race and ethnicity responses. On this report, "Minority" refers to individuals who list a race other than White and/or list their ethnicity as Hispanic/Latino. In other words, people who are multi-racial, any single race other than White, or Hispanic/Latino of any race are considered minorities.

Disability data is not included in the 2010 Decennial Census, or the 2006-2010 ACS. This data is available in the 2013-2017 ACS.

Because of changes made to the Census and ACS questions between 1990 and 2017, disability variables should not be compared from year to year. For example: 1) With the 1990 data the disabilities are listed as a "work disability" while this distinction is not made with 2000 or 2017 ACS data; 2) The 2017 ACS data includes the institutionalized population (e.g. persons in prisons and group homes), while this population is not included in 1990 or 2000; 3) the age groupings changed over the years.

Please take the following two concerns into account when viewing this data: 1) With the 1990 data the disabilities are listed as a "work disability" while this distinction is not made with 2000 or 2017 ACS data; 2) The 2017 ACS data includes the institutionalized population (e.g. persons in prisons and group homes), while this population is not included in 1990 or 2000.

source:

<https://www.census.gov/people/disability/methodology/acs.html>

<https://www.census.gov/population/www/cen2000/90vs00/index.html>

The category Bachelor's Degree or Higher under the heading Educational Attainment Trends is a subset of the category High School Graduate or Higher.

---

## Metadata

- Community and Fraternal Centers [https://etdmpub.florida.gov/metadata/gc\\_communitycenter.htm](https://etdmpub.florida.gov/metadata/gc_communitycenter.htm)
- Correctional Facilities in Florida [https://etdmpub.florida.gov/metadata/gc\\_correctional.htm](https://etdmpub.florida.gov/metadata/gc_correctional.htm)
- Cultural Centers in Florida [https://etdmpub.florida.gov/metadata/gc\\_culturecenter.htm](https://etdmpub.florida.gov/metadata/gc_culturecenter.htm)
- Fire Department and Rescue Station Facilities in Florida [https://etdmpub.florida.gov/metadata/gc\\_firestat.htm](https://etdmpub.florida.gov/metadata/gc_firestat.htm)
- Local, State, and Federal Government Buildings in Florida [https://etdmpub.florida.gov/metadata/gc\\_govbuild.htm](https://etdmpub.florida.gov/metadata/gc_govbuild.htm)
- Florida Health Care Facilities [https://etdmpub.florida.gov/metadata/gc\\_health.htm](https://etdmpub.florida.gov/metadata/gc_health.htm)
- Hospital Facilities in Florida [https://etdmpub.florida.gov/metadata/gc\\_hospitals.htm](https://etdmpub.florida.gov/metadata/gc_hospitals.htm)
- Law Enforcement Facilities in Florida [https://etdmpub.florida.gov/metadata/gc\\_lawenforce.htm](https://etdmpub.florida.gov/metadata/gc_lawenforce.htm)
- Florida Parks and Recreational Facilities [https://etdmpub.florida.gov/metadata/gc\\_parks.htm](https://etdmpub.florida.gov/metadata/gc_parks.htm)
- Religious Centers [https://etdmpub.florida.gov/metadata/gc\\_religion.htm](https://etdmpub.florida.gov/metadata/gc_religion.htm)
- Florida Public and Private Schools [https://etdmpub.florida.gov/metadata/gc\\_schools.htm](https://etdmpub.florida.gov/metadata/gc_schools.htm)
- Social Service Centers [https://etdmpub.florida.gov/metadata/gc\\_socialservice.htm](https://etdmpub.florida.gov/metadata/gc_socialservice.htm)
- Assisted Rental Housing Units in Florida [https://etdmpub.florida.gov/metadata/gc\\_assisted\\_housing.htm](https://etdmpub.florida.gov/metadata/gc_assisted_housing.htm)
- Group Care Facilities <https://etdmpub.florida.gov/metadata/groupcare.htm>
- Mobile Home Parks in Florida [https://etdmpub.florida.gov/metadata/gc\\_mobilehomes.htm](https://etdmpub.florida.gov/metadata/gc_mobilehomes.htm)
- Migrant Camps in Florida <https://etdmpub.florida.gov/metadata/migrant.htm>
- Veteran Organizations and Facilities [https://etdmpub.florida.gov/metadata/gc\\_veterans.htm](https://etdmpub.florida.gov/metadata/gc_veterans.htm)
- Generalized Land Use - Florida DOT District 5 [https://etdmpub.florida.gov/metadata/d5\\_lu\\_gen.htm](https://etdmpub.florida.gov/metadata/d5_lu_gen.htm)
- Census Block Groups in Florida [https://etdmpub.florida.gov/metadata/e2\\_cenacs\\_cci.htm](https://etdmpub.florida.gov/metadata/e2_cenacs_cci.htm)
- 1990 Census Block Groups in Florida [https://etdmpub.florida.gov/metadata/e2\\_cenblkgrp\\_1990\\_cci.htm](https://etdmpub.florida.gov/metadata/e2_cenblkgrp_1990_cci.htm)
- 2000 Census Block Groups in Florida [https://etdmpub.florida.gov/metadata/e2\\_cenblkgrp\\_2000\\_cci.htm](https://etdmpub.florida.gov/metadata/e2_cenblkgrp_2000_cci.htm)
- 2010 Census Block Groups in Florida [https://etdmpub.florida.gov/metadata/e2\\_cenblkgrp\\_2010\\_cci.htm](https://etdmpub.florida.gov/metadata/e2_cenblkgrp_2010_cci.htm)