

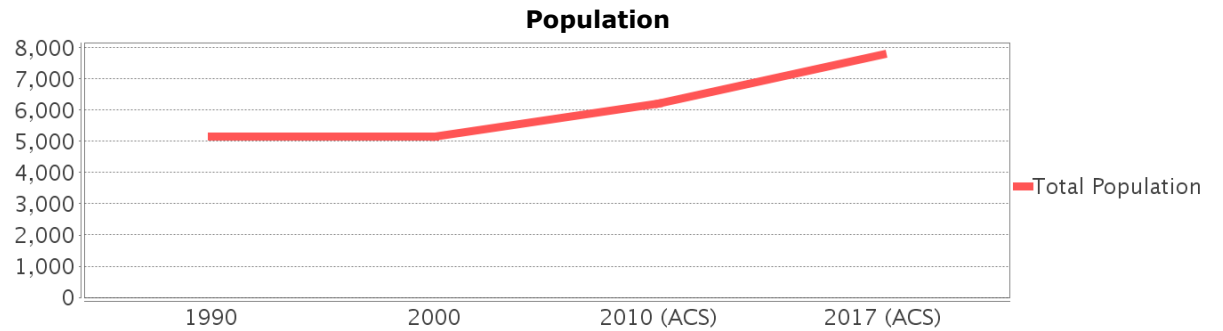
Sociocultural Data Report

Clarcona

Area: 5.497 square miles
Jurisdiction(s): **Cities:** Ocoee, Apopka
Counties: Orange

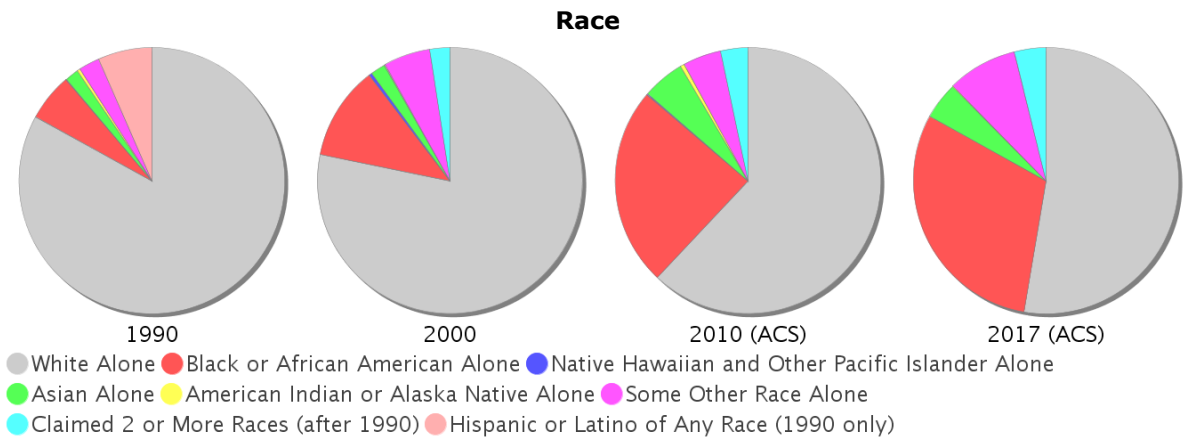
General Population Trends

Description	1990	2000	2010 (ACS)	2017 (ACS)
Total Population	5,158	5,140	6,204	7,776
Total Households	1,627	1,780	2,159	2,543
Average Persons per Acre	2.34	3.99	4.50	5.11
Average Persons per Household	3.07	3.06	3.00	3.13
Average Persons per Family	3.32	3.46	3.08	3.72
Males	2,586	2,592	3,041	4,007
Females	2,573	2,547	3,163	3,769

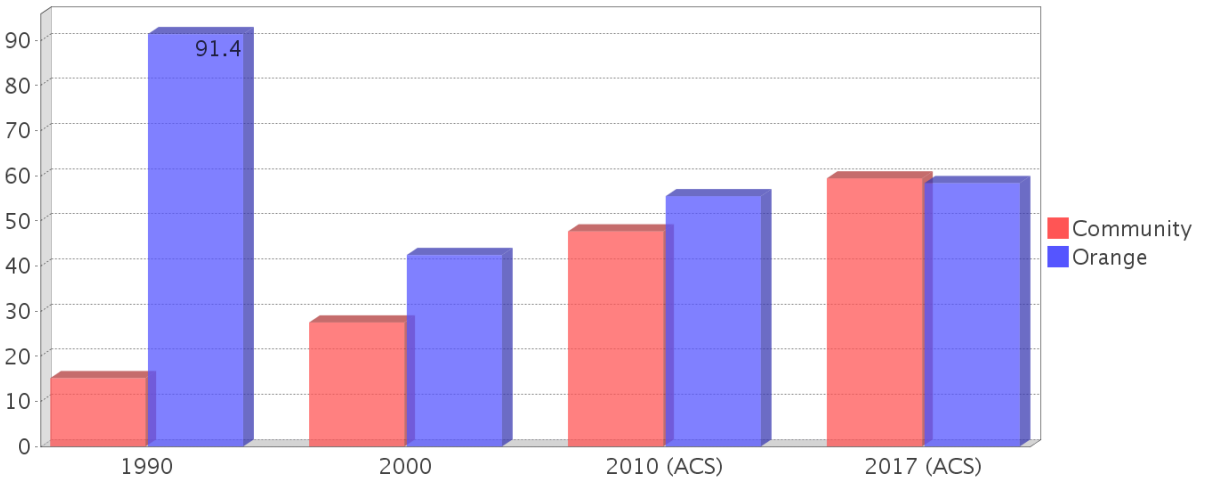


Race and Ethnicity Trends

Description	1990	2000	2010 (ACS)	2017 (ACS)
White Alone	4,584 (88.87%)	4,019 (78.19%)	3,847 (62.01%)	4,093 (52.64%)
Black or African American Alone	320 (6.20%)	587 (11.42%)	1,505 (24.26%)	2,362 (30.38%)
Native Hawaiian and Other Pacific Islander Alone	2 (0.04%)	18 (0.35%)	7 (0.11%)	0 (0.00%)
Asian Alone	90 (1.74%)	95 (1.85%)	319 (5.14%)	351 (4.51%)
American Indian or Alaska Native Alone	20 (0.39%)	2 (0.04%)	33 (0.53%)	8 (0.10%)
Some Other Race Alone	141 (2.73%)	293 (5.70%)	287 (4.63%)	664 (8.54%)
Claimed 2 or More Races	NA (NA)	126 (2.45%)	207 (3.34%)	297 (3.82%)
Hispanic or Latino of Any Race	365 (7.08%)	627 (12.20%)	973 (15.68%)	1,447 (18.61%)
Not Hispanic or Latino	4,793 (92.92%)	4,513 (87.80%)	5,231 (84.32%)	6,329 (81.39%)
Minority	781 (15.14%)	1,413 (27.49%)	2,958 (47.68%)	4,621 (59.43%)



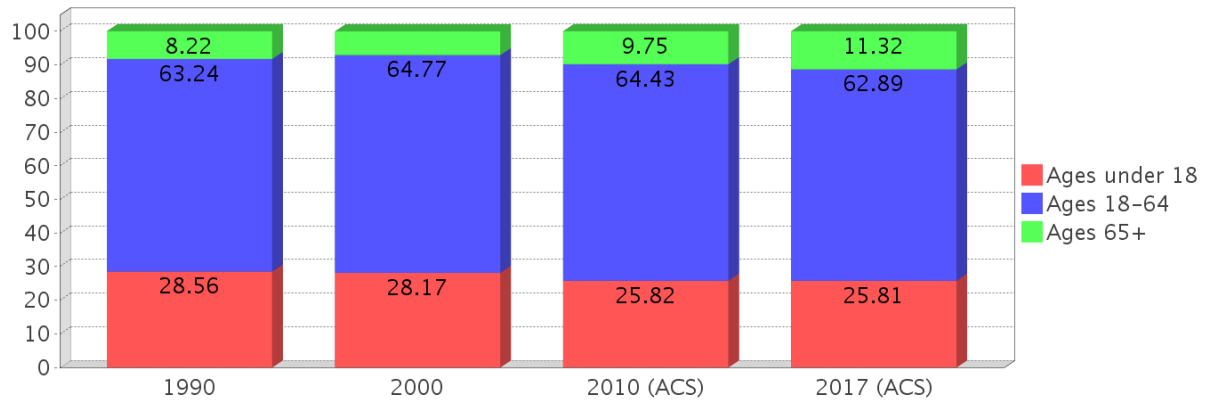
Minority Percentage Population



Age Trends

Description	1990	2000	2010 (ACS)	2017 (ACS)
Under Age 5	9.65%	8.37%	6.67%	6.80%
Ages 5-17	18.90%	19.81%	19.15%	19.01%
Ages 18-21	4.28%	4.14%	4.95%	3.96%
Ages 22-29	14.97%	8.25%	8.51%	8.41%
Ages 30-39	20.59%	19.92%	14.72%	14.58%
Ages 40-49	11.61%	17.26%	16.88%	18.93%
Ages 50-64	11.79%	15.19%	19.37%	17.00%
Age 65 and Over	8.22%	7.04%	9.75%	11.32%
-Ages 65-74	5.93%	4.94%	6.19%	6.10%
-Ages 75-84	1.92%	1.75%	2.84%	3.40%
-Age 85 and Over	0.37%	0.35%	0.73%	1.83%
Median Age	NA	32	35	34

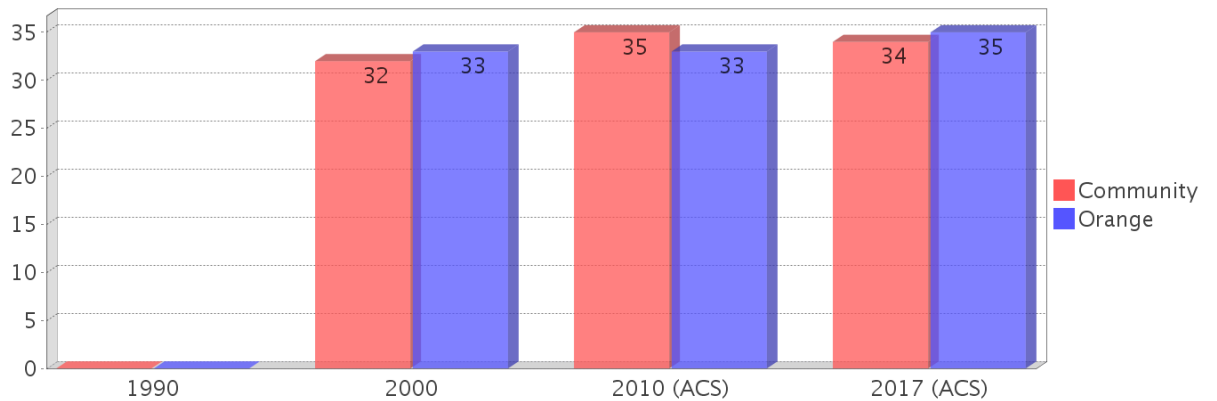
Percentage Population by Age Group



Income Trends

Description	1990	2000	2010 (ACS)	2017 (ACS)
Median Household Income	\$32,666	\$50,368	\$54,086	\$54,046
Median Family Income	\$35,642	\$52,732	\$56,926	\$55,484
Population below Poverty Level	8.88%	6.36%	8.53%	6.16%
Households below Poverty Level	8.30%	5.73%	9.50%	7.75%
Households with Public Assistance Income	3.01%	2.08%	1.20%	1.22%

Median Age Comparison

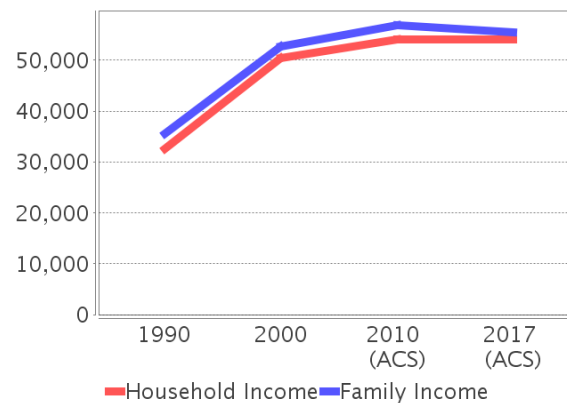


Disability Trends

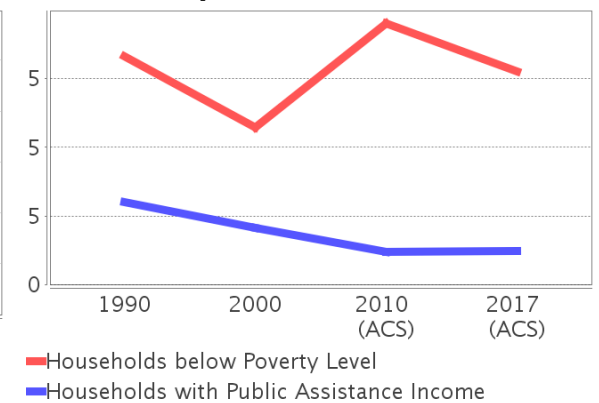
See the Data Sources section below for an explanation about the differences in disability data among the various years.

Description	1990	2000	2010 (ACS)	2017 (ACS)
Population 16 To 64 Years with a disability	304 (8.16%)	662 (14.06%)	(NA)	(NA)
Population 20 To 64 Years with a disability	(NA)	(NA)	(NA)	553 (11.76%)

Income Trends



Poverty and Public Assistance



Educational Attainment Trends

Age 25 and Over

Description	1990	2000	2010 (ACS)	2017 (ACS)
Less than 9th Grade	272 (8.39%)	135 (3.99%)	176 (4.44%)	144 (2.78%)
9th to 12th Grade, No Diploma	475 (14.66%)	363 (10.72%)	373 (9.42%)	314 (6.06%)
High School Graduate or Higher	2,494 (76.95%)	2,887 (85.26%)	3,411 (86.14%)	4,721 (91.16%)
Bachelor's Degree or Higher	472 (14.56%)	661 (19.52%)	939 (23.71%)	1,436 (27.73%)

Language Trends

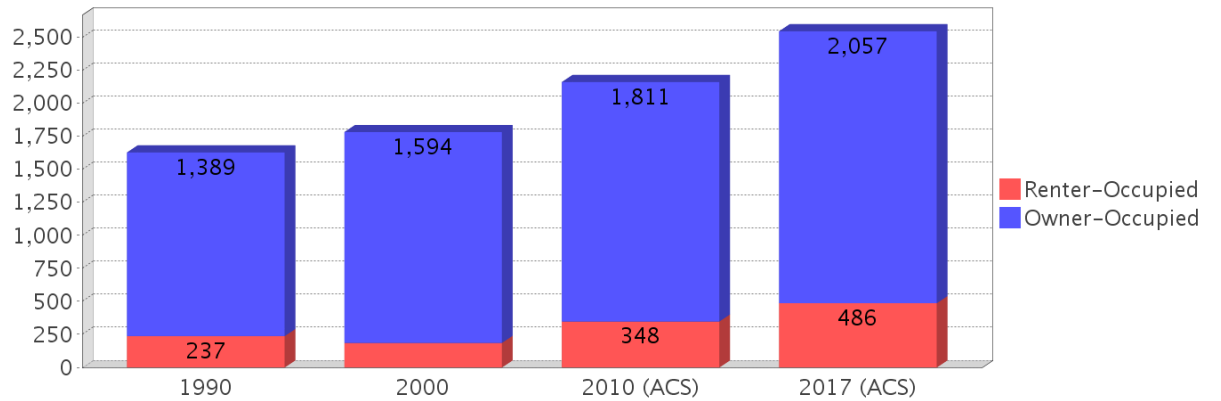
Age 5 and Over

Description	1990	2000	2010 (ACS)	2017 (ACS)
Speaks English Well	85 (1.87%)	166 (3.53%)	252 (4.52%)	235 (3.24%)
Speaks English Not Well	NA (NA)	115 (2.44%)	134 (2.40%)	131 (1.81%)
Speaks English Not at All	NA (NA)	10 (0.21%)	50 (0.90%)	67 (0.92%)
Speaks English Not Well or Not at All	66 (1.46%)	125 (2.65%)	184 (3.30%)	198 (2.73%)

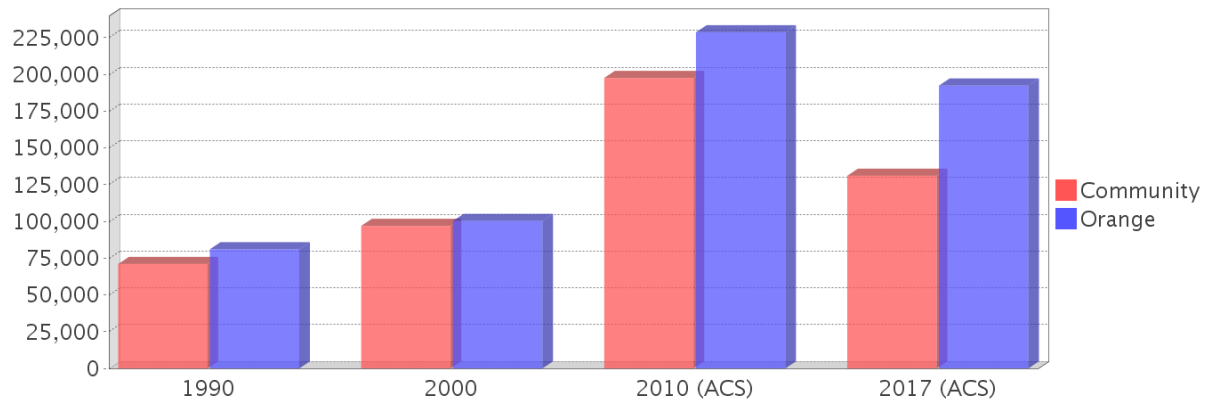
Housing Trends

Description	1990	2000	2010 (ACS)	2017 (ACS)
Total	1,766	1,927	2,406	2,799
Units per Acre	0.56	0.58	0.80	0.93
Single-Family Units	1,403	1,538	1,878	2,293
Multi-Family Units	17	1	25	20
Mobile Home Units	202	326	413	466
Owner-Occupied Units	1,389	1,594	1,811	2,057
Renter-Occupied Units	237	186	348	486
Vacant Units	139	147	248	256
Median Housing Value	\$71,050	\$96,900	\$197,500	\$131,050
Occupied Housing Units w/No Vehicle	55 (3.38%)	55 (3.09%)	62 (2.87%)	114 (4.48%)

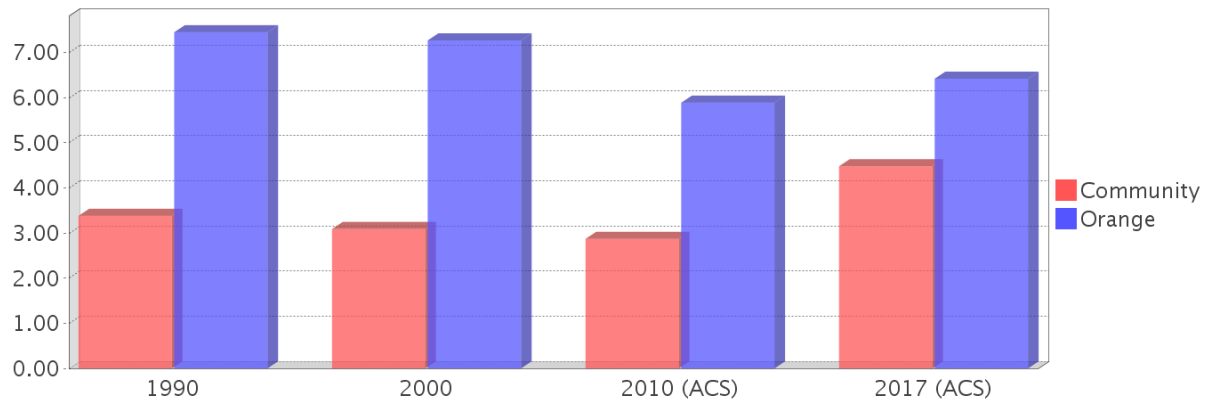
Housing Tenure



Median Housing Value Comparison

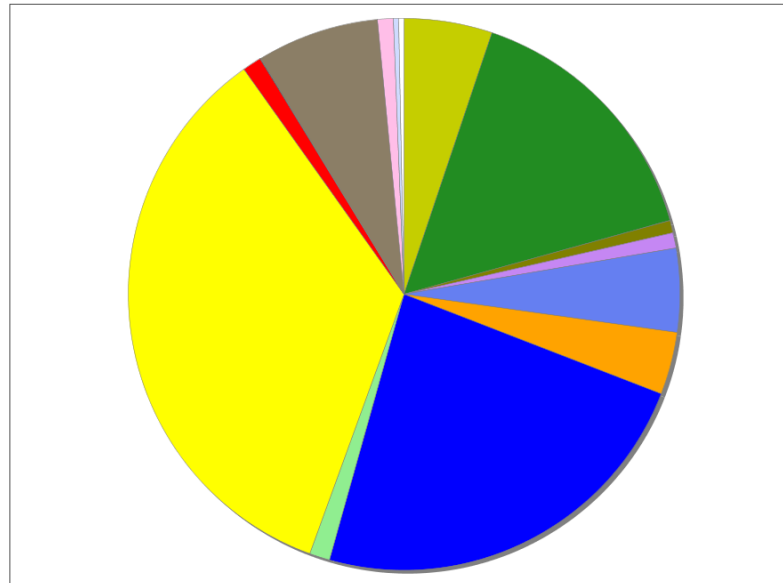


Occupied Units With No Vehicles Available



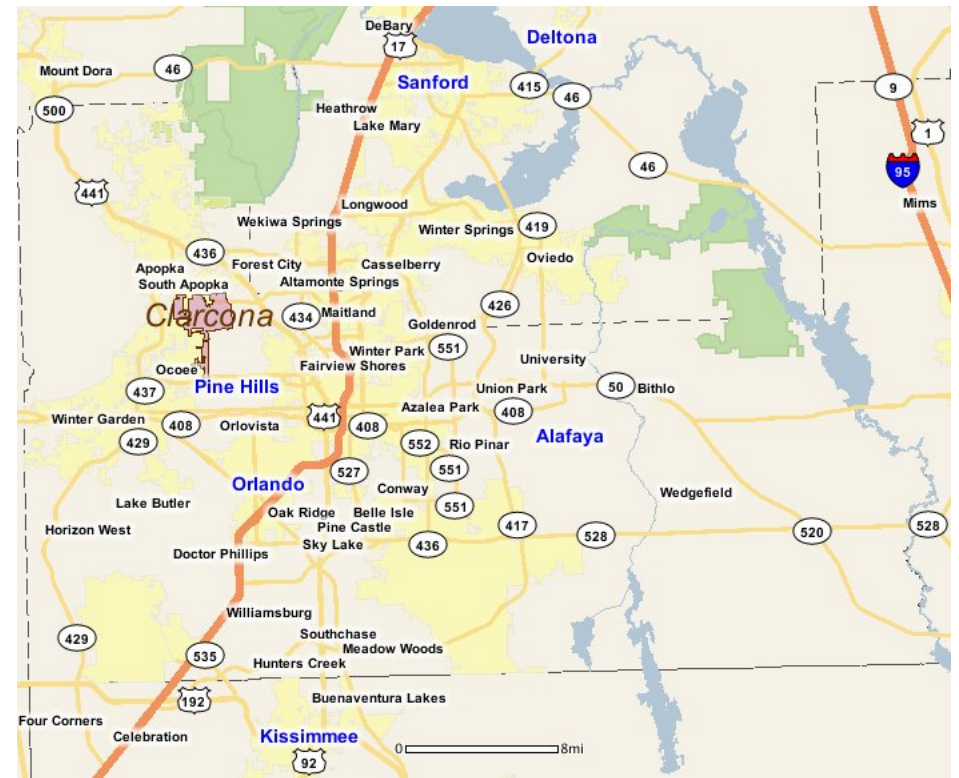
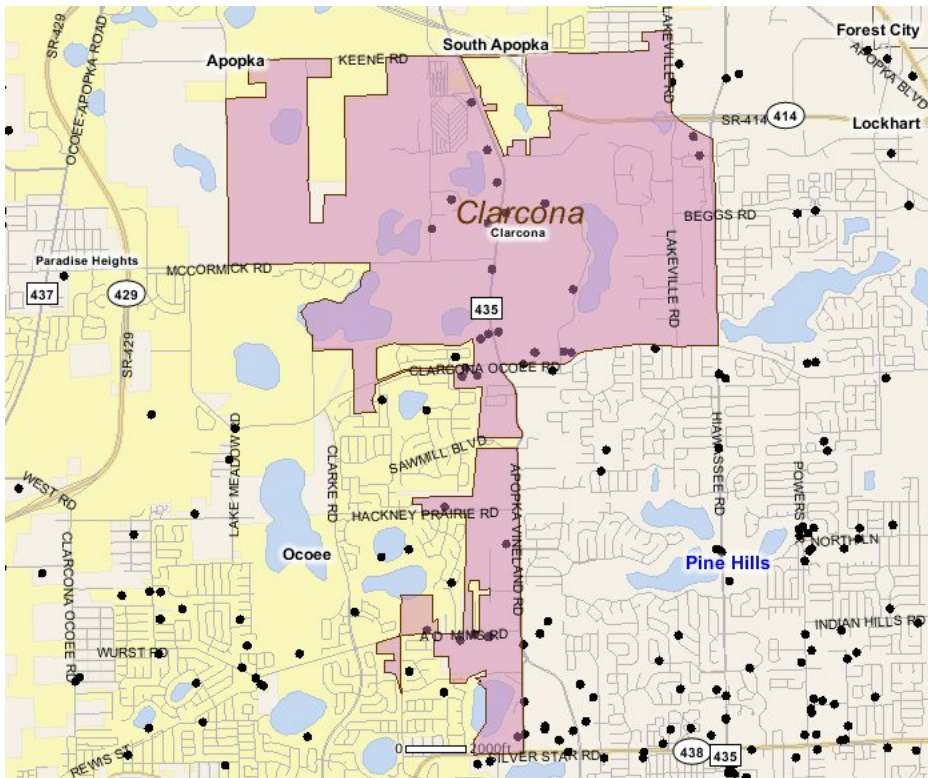
Existing Land Use

Land Use Type	Acres	Percentage
Acreage Not Zoned For Agriculture	169	4.80%
Agricultural	509	14.47%
Centrally Assessed	23	0.65%
Industrial	30	0.85%
Institutional	160	4.55%
Mining	<0.5	<0.01%
Other	120	3.41%
Public/Semi-Public	768	21.83%
Recreation	39	1.11%
Residential	1,133	32.21%
Retail/Office	36	1.02%
Row	1	0.03%
Vacant Residential	235	6.68%
Vacant Nonresidential	30	0.85%
Water	10	0.28%
Parcels With No Values	10	0.28%



- Acreage Not Zoned For Agriculture
- Agricultural
- Centrally Assessed
- Industrial
- Institutional
- Mining
- Other
- Public/Semi-Public
- Recreation
- Residential
- Retail/Office
- Row
- Vacant Residential
- Vacant Nonresidential
- Water
- Parcels With No Values

Location Maps



Community Facilities

The community facilities information below is useful in a variety of ways for environmental evaluations. These community resources should be evaluated for potential sociocultural effects, such as accessibility and relocation potential. The facility types may indicate the types of population groups present in the project study area. Facility staff and leaders can be sources of community information such as who uses the facility and how it is used. Additionally, community facilities are potential public meeting venues.

Community Centers (Points)

Facility Name	Address	Zip Code
CLARCONA COMMUNITY CENTER	5771 N APOPKA VINELAND RD	32818

Fire Stations (Points)

Facility Name	Address	Zip Code
ORANGE COUNTY FIRE DEPARTMENT AND RESCUE STATION 28 (CLARCONA)	3250 CLARCONA RD	32703

Florida Parks and Recreational Facilities (Points)

Facility Name	Address	Zip Code
WEST ORANGE TRAIL-MCCORMICK OUTPOST	506 E MCCORMICK RD	34761
CLARCONA HORSE PARK	3535 DAMON RD	32703
WEST ORANGE TRAIL-APOPKA-VINELAND OUTPOST	5794 N APOPKA VINELAND RD	32818

Public and Private Schools (Points)

Facility Name	Address	Zip Code
FREEDOM FELLOWSHIP SCHOOL	5631 GILLIAM RD	32818
WAY OF GRACE LEARNING CENTER	8550 CLARCONA OCOEE RD	32818
GLAD TIDINGS ACADEMY- EAST	8550 CLARCONA OCOEE RD	32818
WEST OAKS ACADEMY	8624 A.D. MIMS ROAD	32818
RADIANT LIFE ACADEMY	8151 CLARCONA OCOEE RD	32818
VICTORY PREP CHRISTIAN ACADEMY	6837 LAKEVILLE RD	32818
247 LEARNING ACADEMY	7015 OAKMORE LANE	32818
PRAIRIE LAKE ELEMENTARY SCHOOL	8723 HACKNEY PRAIRIE RD	32818

Religious Centers (Points)

Facility Name	Address	Zip Code
ORANGE PRIMITIVE BAPTIST CHURCH	3512 CLARCONA ROAD	32703
DEEPER LIFE ASSEMBLY	8825 A D MIMS ROAD	32818
WAY OF GRACE MINISTRIES	8550 CLARCONA OCOEE ROAD	32818
TRUTH TABERNACLE OF APOPKA	8125 GILLIAM ROAD	32703
WEST OAKS COMMUNITY COG	8624 A D MIMS ROAD	32818
WEST ORLANDO ASSEMBLY OF GOD	2680 NORTH APOPKA-VINELAND ROAD	32818
SHRI SURYA NARAYAN MANDIR	8406 CLARCONA OCOEE RD	34761
THE LOVE CHURCH	6837 LAKEVILLE ROAD	32818
NEW DESTINY CHRISTIAN CENTER OF ORLANDO	505 EAST MCCORMICK ROAD	32703
RADIANT LIFE ASSEMBLY OF GOD	8151 CLARCONA OCOEE ROAD	32818
KOINONIA MINISTRIES OF CENTRAL FLORIDA	5928 GILLIAM RD	32818
MT OLIVE WORSHIP AND EDUCATION CENTER OF SEVENTH DAY ADVENTISTS	3350 CLARCONA RD	32703
BAO AN BUDDHIST CENTER INC	5788 N APOPKA VINELAND RD	32818
WESTWOOD CHURCH OF CMA	4412 N APOPKA VINELAND ROAD	32818
REJOICE IN THE LORD MINISTRIES	8053 GILLIAM RD	32818
FREEDOM FELLOWSHIP CHURCH	5631 GILLIAM ROAD	32818
ORLANDO FREE PRESBYTERIAN CURCH	7853 CLARCONA OCOEE ROAD	32818
JEHOVAH'S WITNESSES KINGDOM HALLS - WOODSMERE CONGREGATION	8674 A D MIMS ROAD	32818

US Census Places

Facility Name

South Apopka

Pine Hills

Apopka

Ocoee

Clarcona

Block Groups

The following Census Block Groups were used to calculate demographics for this report.

1990 Census Block Groups

120950123014, 120950151022, 120950175024, 120950151021, 120950175013, 120950149012, 120950175012, 120950150001, 120950175025, 120950149021, 120950150003

2000 Census Block Groups

120950175042, 120950151061, 120950123041, 120950175012, 120950151052, 120950149032, 120950150041, 120950123031, 120950175011, 120950149061, 120950175043, 120950151051

2010 Census Block Groups

120950175012, 120950175043, 120950175011, 120950149091, 120950151061, 120950151051, 120950150041, 120950123031, 120950123041, 120950149061, 120950151052, 120950175042

2017 Census Block Groups

120950150041, 120950175043, 120950123031, 120950151061, 120950151052, 120950123041, 120950175012, 120950175042, 120950175011, 120950151051

Data Sources

Area

The geographic area of the community based on a user-specified community boundary or area of interest (AOI) boundary.

Jurisdiction

Jurisdiction(s) includes local government boundaries that intersect the community or AOI boundary.

Demographic Data

Demographic data reported under the headings General Population Trends, Race and Ethnicity Trends, Age Trends, Income Trends, Educational Attainment Trends, Language Trends, and Housing Trends is from the U.S. Decennial Census (1990, 2000) and the American Community Survey (ACS) 5-year estimates from 2006-2010 and 2013-2017. The data was gathered at the block group level for user-specified community boundaries and AOIs, and at the county level for counties. Depending on the dataset, the data represents 100% counts (Census Summary File 1) or sample-based information (Census Summary File 3 or ACS).

About the Census Data:

User-specified community boundaries and AOIs do not always correspond precisely to block group boundaries. In these instances, adjustment of the geographic area and data for affected block groups is required to estimate the actual population. To improve the accuracy of such estimates in the SDR report, the census block group data was adjusted to exclude all census blocks with a population of two or fewer. These areas were eliminated from the corresponding years' block groups. Next, the portion of the block group that lies outside of the community or AOI boundary was removed. The demographics within each block group were then recalculated, assuming an equal area distribution of the population. Note that there may be areas where there is no population.

Use caution when comparing the 100% count data (Decennial Census) to the sample-based data (ACS). In any given year, about one in 40 or 2.5% of U.S. households will receive the ACS questionnaire. Over any five-year period, about

one in eight households will receive the questionnaire, as compared to about one in six that received the long form questionnaire for the Decennial Census 2000. (Source: <http://mcdc.missouri.edu/pub/data/acs/Readme.shtml>) The U.S. Census Bureau provides help with this process:

<https://www.census.gov/programs-surveys/acs/guidance/comparing-acs-data/2017.html>

Use caution when interpreting changes in Race and Ethnicity over time. Starting with the 2000 Decennial Census, respondents were given a new option of selecting one or more race categories. Also in 2000, the placement of the question about Hispanic origin changed, helping to increase responsiveness to the Hispanic-origin question. Because of these and other changes, the 1990 data on race and ethnicity are not directly comparable with data from later censuses. (Source: <http://www.census.gov/prod/2001pubs/c2kbr01-1.pdf>; <http://www.census.gov/pred/www/rpts/Race%20and%20Ethnicity%20FINAL%20report.pdf>)

The "Minority" calculations are derived from Census and ACS data using both the race and ethnicity responses. On this report, "Minority" refers to individuals who list a race other than White and/or list their ethnicity as Hispanic/Latino. In other words, people who are multi-racial, any single race other than White, or Hispanic/Latino of any race are considered minorities.

Disability data is not included in the 2010 Decennial Census, or the 2006-2010 ACS. This data is available in the 2013-2017 ACS.

Because of changes made to the Census and ACS questions between 1990 and 2017, disability variables should not be compared from year to year. For example: 1) With the 1990 data the disabilities are listed as a "work disability" while this distinction is not made with 2000 or 2017 ACS data; 2) The 2017 ACS data includes the institutionalized population (e.g. persons in prisons and group homes), while this population is not included in 1990 or 2000; 3) the age groupings changed over the years.

Please take the following two concerns into account when viewing this data: 1) With the 1990 data the disabilities are listed as a "work disability" while this distinction is not made with 2000 or 2017 ACS data; 2) The 2017 ACS data includes the institutionalized population (e.g. persons in prisons and group homes), while this population is not included in 1990 or 2000.

The category Bachelor's Degree or Higher under the heading Educational Attainment Trends is a subset of the category High School Graduate or Higher.

Income of households. This includes the income of the householder and all other individuals 15 years old and over in the household, whether they are related to the householder or not. Because many households consist of only one person, average household income is usually less than average family income.

Income of families. In compiling statistics on family income, the incomes of all members 15 years old and over related to the householder are summed and treated as a single amount.

Age Trends median age for 1990 is not available.

Land Use Data

The Land Use information Indicates acreages and percentages for the generalized land use types used to group parcel-specific, existing land use assigned by the county property appraiser office according to the Florida Department of Revenue land use codes.

Community Facilities Data

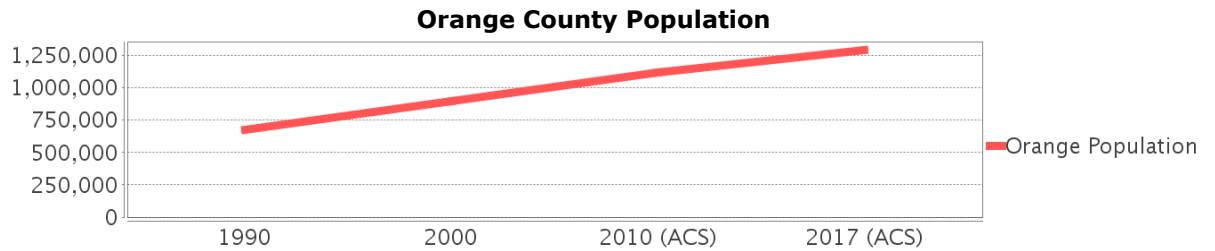
- Assisted Rental Housing Units - Identifies multifamily rental developments that receive funding assistance under federal, state, and local government programs to offer affordable housing as reported by the Shimberg Center for Housing Studies, University of Florida.

- Mobile Home Parks - Identifies approved or acknowledged mobile home parks reported by the Florida Department of Business and Professional Regulation and Florida Department of Health.
- Migrant Camps - Identifies migrant labor camp facilities inspected by the Florida Department of Health.
- Group Care Facilities - Identifies group care facilities inspected by the Florida Department of Health.
- Community Center and Fraternal Association Facilities - Identifies facilities reported by multiple sources.
- Law Enforcement Correctional Facilities - Identifies facilities reported by multiple sources.
- Cultural Centers - Identifies cultural centers including organizations, buildings, or complexes that promote culture and arts (e.g., aquariums and zoological facilities; arboreta and botanical gardens; dinner theaters; drive-ins; historical places and services; libraries; motion picture theaters; museums and art galleries; performing arts centers; performing arts theaters; planetariums; studios and art galleries; and theater producers stage facilities) reported by multiple sources.
- Fire Department and Rescue Station Facilities - Identifies facilities reported by multiple sources.
- Government Buildings - Identifies local, state, and federal government buildings reported by multiple sources.
- Health Care Facilities - Identifies health care facilities including abortion clinics, dialysis clinics, medical doctors, nursing homes, osteopaths, state laboratories/clinics, and surgicenters/walk-in clinics reported by the Florida Department of Health.
- Hospital Facilities - Identifies hospital facilities reported by multiple sources.
- Law Enforcement Facilities - Identifies law enforcement facilities reported by multiple sources.
- Parks and Recreational Facilities - Identifies parks and recreational facilities reported by multiple sources.
- Religious Center Facilities - Identifies religious centers including churches, temples, synagogues, mosques, chapels, centers, and other types of religious facilities reported by multiple sources.
- Private and Public Schools - Identifies private and public schools reported by multiple sources.
- Social Service Centers - Identifies social service centers reported by multiple sources.
- Veteran Organizations and Facilities

Orange County Demographic Profile

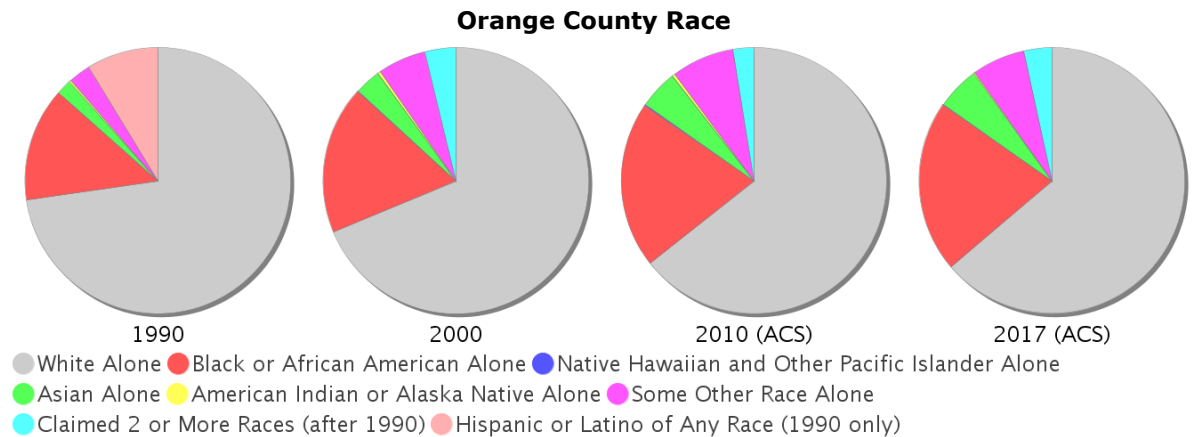
General Population Trends - Orange

Description	1990	2000	2010 (ACS)	2017 (ACS)
Total Population	677,491	896,344	1,116,094	1,290,216
Total Households	254,852	336,286	406,002	451,960
Average Persons per Acre	1.054	1.396	1.738	2.009
Average Persons per Household	2.658	2.609	3.00	2.78
Average Persons per Family	3.149	3.241	3.379	3.503
Males	336,061	442,441	550,254	633,835
Females	341,430	453,903	565,840	656,381



Race and Ethnicity Trends - Orange

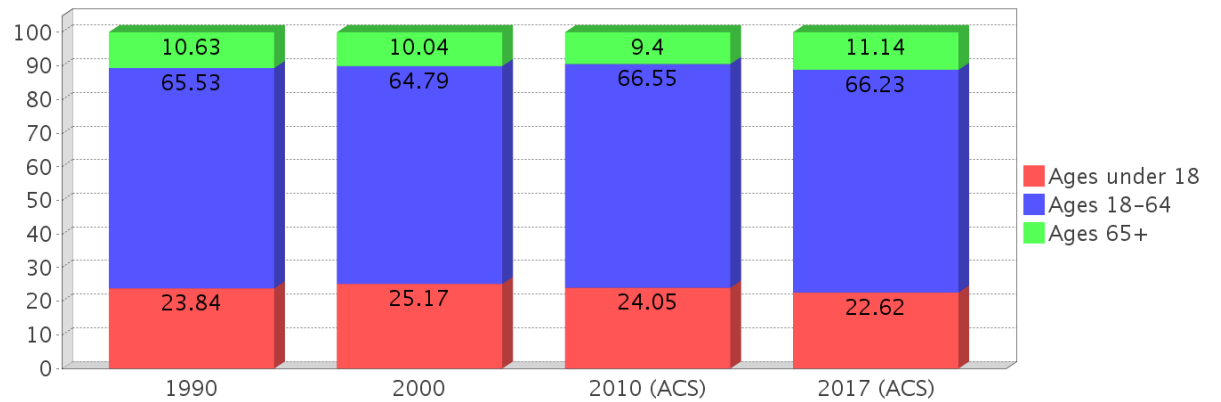
Description	1990	2000	2010 (ACS)	2017 (ACS)
White Alone	539,061 (79.57%)	615,706 (68.69%)	717,711 (64.31%)	822,454 (63.75%)
Black or African American Alone	103,092 (15.22%)	161,558 (18.02%)	226,111 (20.26%)	269,872 (20.92%)
Native Hawaiian and Other Pacific Islander Alone	(NA)	853 (0.10%)	1,547 (0.14%)	932 (0.07%)
Asian Alone	13,469 (1.99%)	28,748 (3.21%)	53,326 (4.78%)	67,134 (5.20%)
American Indian or Alaska Native Alone	2,036 (0.30%)	2,862 (0.32%)	3,560 (0.32%)	2,563 (0.20%)
Some Other Race Alone	19,308 (2.85%)	52,568 (5.86%)	85,645 (7.67%)	83,425 (6.47%)
Claimed 2 or More Races	(NA)	34,049 (3.80%)	28,194 (2.53%)	43,836 (3.40%)
Hispanic or Latino of Any Race	64,946 (9.59%)	168,191 (18.76%)	287,760 (25.78%)	389,005 (30.15%)
Not Hispanic or Latino	612,545 (90.41%)	728,153 (81.24%)	828,334 (74.22%)	901,211 (69.85%)
Minority	619,202 (91.40%)	380,320 (42.43%)	619,202 (55.48%)	753,360 (58.39%)



Age Trends - Orange

Description	1990	2000	2010 (ACS)	2017 (ACS)
Under Age 5	7.36%	6.81%	6.69%	6.24%
Ages 5-17	16.48%	18.35%	17.35%	16.38%
Ages 18-21	7.25%	6.19%	7.08%	6.20%
Ages 22-29	15.98%	12.79%	13.88%	13.81%
Ages 30-39	18.06%	17.43%	14.88%	14.96%
Ages 40-49	11.98%	15.36%	14.79%	13.64%
Ages 50-64	12.26%	13.03%	15.93%	17.62%
Age 65 and Over	10.63%	10.04%	9.40%	11.14%
-Ages 65-74	6.51%	5.52%	5.18%	6.67%
-Ages 75-84	3.16%	3.50%	3.07%	3.13%
-Age 85 and Over	0.96%	1.02%	1.16%	1.34%
Median Age	NA	33	33	35

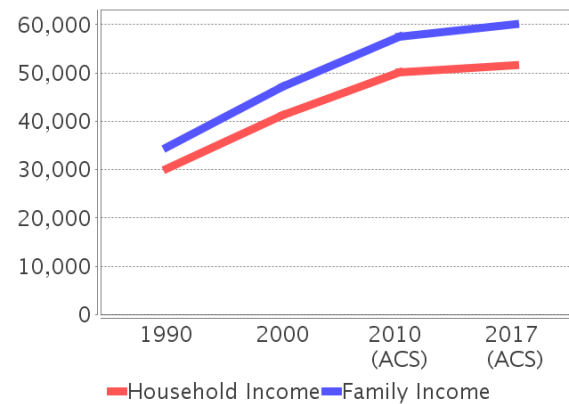
Percentage Population by Age Group - Orange



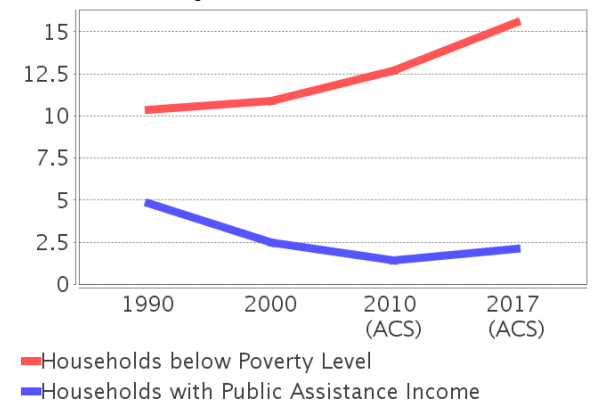
Income Trends - Orange

Description	1990	2000	2010 (ACS)	2017 (ACS)
Median Household Income	\$30,252	\$41,311	\$50,138	\$51,586
Median Family Income	\$34,670	\$47,159	\$57,473	\$60,123
Population below Poverty Level	11.25%	12.11%	13.42%	16.66%
Households below Poverty Level	10.35%	10.91%	12.68%	15.54%
Households with Public Assistance Income	4.83%	2.50%	1.44%	2.09%

Income Trends



Poverty and Public Assistance



Disability Trends - Orange

See the Data Sources section below for an explanation about the differences in disability data among the various years.

Description	1990	2000	2010 (ACS)	2017 (ACS)
Population 16 To 64 Years with a disability	33,640 (6.57%)	119,793 (14.56%)	NA (NA)	NA (NA)
Population 20 To 64 Years with a disability	NA (NA)	NA (NA)	NA (NA)	71,418 (8.88%)

Educational Attainment Trends - Orange

Age 25 and Over

Description	1990	2000	2010 (ACS)	2017 (ACS)
Less than 9th Grade	29,815 (6.90%)	31,431 (5.47%)	36,515 (5.16%)	40,508 (4.74%)
9th to 12th Grade, No Diploma	61,781 (14.29%)	73,160 (12.74%)	56,288 (7.95%)	60,478 (7.08%)
High School Graduate or Higher	340,597 (78.81%)	469,510 (81.78%)	615,181 (86.89%)	752,835 (88.17%)
Bachelor's Degree or Higher	91,722 (21.22%)	150,009 (26.13%)	214,780 (30.34%)	279,550 (32.74%)

Language Trends - Orange

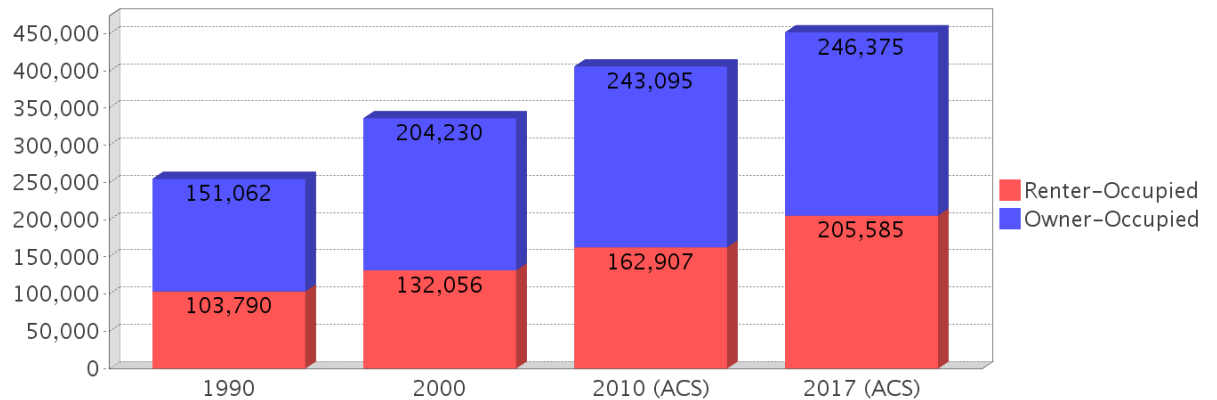
Age 5 and Over

Description	1990	2000	2010 (ACS)	2017 (ACS)
Speaks English Well	20,163 (3.21%)	47,230 (5.65%)	65,314 (6.27%)	79,645 (6.58%)
Speaks English Not Well	NA (NA)	30,937 (3.70%)	49,410 (4.74%)	58,016 (4.80%)
Speaks English Not at All	NA (NA)	9,102 (1.09%)	18,544 (1.78%)	24,057 (1.99%)
Speaks English Not Well or Not at All	13,943 (2.22%)	40,039 (4.79%)	67,954 (6.53%)	82,073 (6.78%)

Housing Trends - Orange

Description	1990	2000	2010 (ACS)	2017 (ACS)
Total	282,686	361,349	474,757	517,631
Units per Acre	0.44	0.563	0.739	0.806
Single-Family Units	161,010	227,164	297,590	324,217
Multi-Family Units	73,974	113,760	156,040	172,872
Mobile Home Units	17,720	20,068	21,038	20,343
Owner-Occupied Units	151,062	204,230	243,095	246,375
Renter-Occupied Units	103,790	132,056	162,907	205,585
Vacant Units	27,834	25,063	68,755	65,671
Median Housing Value	\$81,000	\$100,300	\$228,600	\$192,400
Occupied Housing Units w/No Vehicle	18,991 (7.45%)	24,460 (7.27%)	23,926 (5.89%)	28,998 (6.42%)

Housing Tenure - Orange



County Data Sources

Demographic data reported is from the U.S. Decennial Census (1990, 2000) and the American Community Survey (ACS) 5-year estimates from 2006-2010 and 2013-2017. The data was gathered at the county level. Depending on the dataset, the data represents 100% counts (Census Summary File 1) or sample-based information (Census Summary File 3 or ACS).

About the Census Data:

Use caution when comparing the 100% count data (Decennial Census) to the sample-based data (ACS). In any given year, about one in 40 or 2.5% of U.S. households will receive the ACS questionnaire. Over any five-year period, about one in eight households will receive the questionnaire, as compared to about one in six that received the long form questionnaire for the Decennial Census 2000. (Source: <http://mcdc.missouri.edu/pub/data/acs/Readme.shtml>) The U.S. Census Bureau provides help with this process:

<https://www.census.gov/programs-surveys/acs/guidance/comparing-acs-data/2017.html>

Use caution when interpreting changes in Race and Ethnicity over time. Starting with the 2000 Decennial Census, respondents were given a new option of selecting one or more race categories. Also in 2000, the placement of the question about Hispanic origin changed, helping to increase responsiveness to the Hispanic-origin question. Because of these and other changes, the 1990 data on race and ethnicity are not directly comparable with data from later censuses. (Source: <http://www.census.gov/prod/2001pubs/c2kbr01-1.pdf>;
<http://www.census.gov/pred/www/rpts/Race%20and%20Ethnicity%20FINAL%20report.pdf>)

The "Minority" calculations are derived from Census and ACS data using both the race and ethnicity responses. On this report, "Minority" refers to individuals who list a race other than White and/or list their ethnicity as Hispanic/Latino. In other words, people who are multi-racial, any single race other than White, or Hispanic/Latino of any race are considered minorities.

Disability data is not included in the 2010 Decennial Census, or the 2006-2010 ACS. This data is available in the 2013-2017 ACS.

Because of changes made to the Census and ACS questions between 1990 and 2017, disability variables should not be compared from year to year. For example: 1) With the 1990 data the disabilities are listed as a "work disability" while this distinction is not made with 2000 or 2017 ACS data; 2) The 2017 ACS data includes the institutionalized population (e.g. persons in prisons and group homes), while this population is not included in 1990 or 2000; 3) the age groupings changed over the years.

Please take the following two concerns into account when viewing this data: 1) With the 1990 data the disabilities are listed as a "work disability" while this distinction is not made with 2000 or 2017 ACS data; 2) The 2017 ACS data includes the institutionalized population (e.g. persons in prisons and group homes), while this population is not included in 1990 or 2000.

source:

<https://www.census.gov/people/disability/methodology/acs.html>

<https://www.census.gov/population/www/cen2000/90vs00/index.html>

The category Bachelor's Degree or Higher under the heading Educational Attainment Trends is a subset of the category High School Graduate or Higher.

Metadata

- Community and Fraternal Centers https://etdmpub.florida-et.org/metadata/gc_communitycenter.htm
- Correctional Facilities in Florida https://etdmpub.florida-et.org/metadata/gc_correctional.htm
- Cultural Centers in Florida https://etdmpub.florida-et.org/metadata/gc_culturecenter.htm
- Fire Department and Rescue Station Facilities in Florida https://etdmpub.florida-et.org/metadata/gc_firestat.htm
- Local, State, and Federal Government Buildings in Florida https://etdmpub.florida-et.org/metadata/gc_govbuild.htm
- Florida Health Care Facilities https://etdmpub.florida-et.org/metadata/gc_health.htm
- Hospital Facilities in Florida https://etdmpub.florida-et.org/metadata/gc_hospitals.htm
- Law Enforcement Facilities in Florida https://etdmpub.florida-et.org/metadata/gc_lawenforce.htm
- Florida Parks and Recreational Facilities https://etdmpub.florida-et.org/metadata/gc_parks.htm
- Religious Centers https://etdmpub.florida-et.org/metadata/gc_religion.htm
- Florida Public and Private Schools https://etdmpub.florida-et.org/metadata/gc_schools.htm
- Social Service Centers https://etdmpub.florida-et.org/metadata/gc_socialservice.htm
- Assisted Rental Housing Units in Florida https://etdmpub.florida-et.org/metadata/gc_assisted_housing.htm
- Group Care Facilities <https://etdmpub.florida-et.org/metadata/groupcare.htm>
- Mobile Home Parks in Florida https://etdmpub.florida-et.org/metadata/gc_mobilehomes.htm
- Migrant Camps in Florida <https://etdmpub.florida-et.org/metadata/migrant.htm>
- Veteran Organizations and Facilities https://etdmpub.florida-et.org/metadata/gc_veterans.htm
- Generalized Land Use - Florida DOT District 5 https://etdmpub.florida-et.org/metadata/d5_lu_gen.htm
- Census Block Groups in Florida https://etdmpub.florida-et.org/metadata/e2_cenacs_cci.htm
- 1990 Census Block Groups in Florida https://etdmpub.florida-et.org/metadata/e2_cenblkgrp_1990_cci.htm
- 2000 Census Block Groups in Florida https://etdmpub.florida-et.org/metadata/e2_cenblkgrp_2000_cci.htm
- 2010 Census Block Groups in Florida https://etdmpub.florida-et.org/metadata/e2_cenblkgrp_2010_cci.htm