

Sociocultural Data Report

Country Club

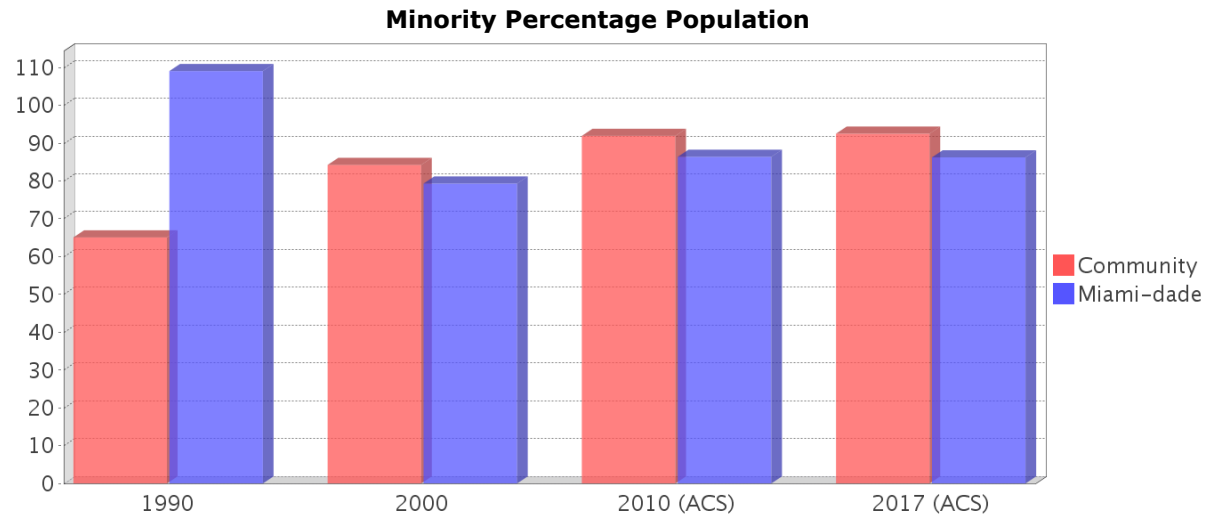
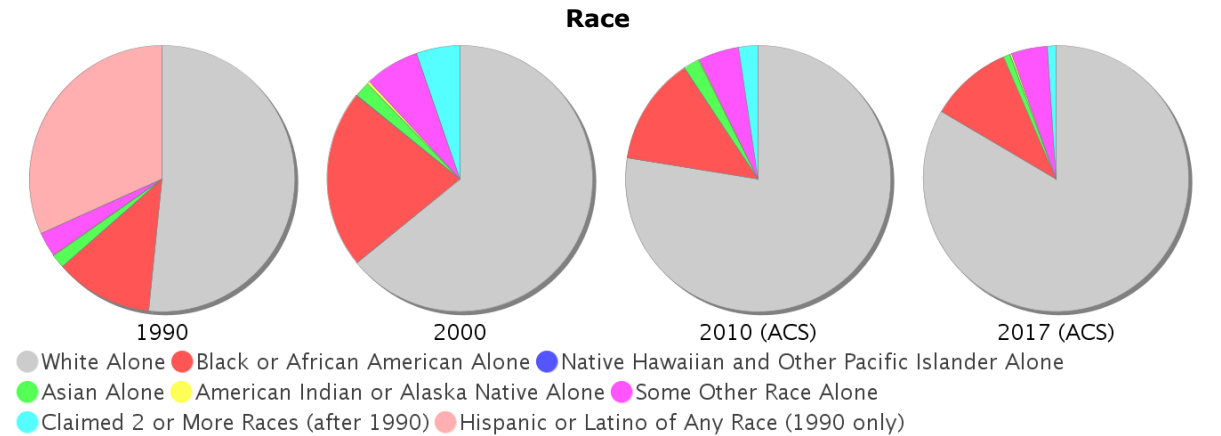
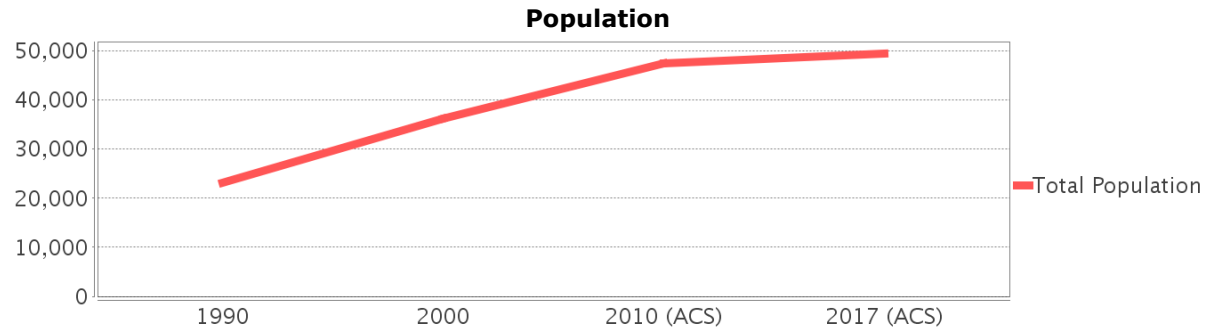
Area: 4.438 square miles
Jurisdiction(s): **Cities:** Miami Lakes, Miramar
Counties: Miami-dade

General Population Trends

Description	1990	2000	2010 (ACS)	2017 (ACS)
Total Population	23,080	36,242	47,388	49,374
Total Households	9,000	12,891	16,380	16,497
Average Persons per Acre	8.89	12.18	28.25	28.60
Average Persons per Household	3.03	3.04	3.00	3.09
Average Persons per Family	3.42	3.43	3.27	3.80
Males	11,157	17,110	21,980	23,908
Females	11,923	19,132	25,408	25,467

Race and Ethnicity Trends

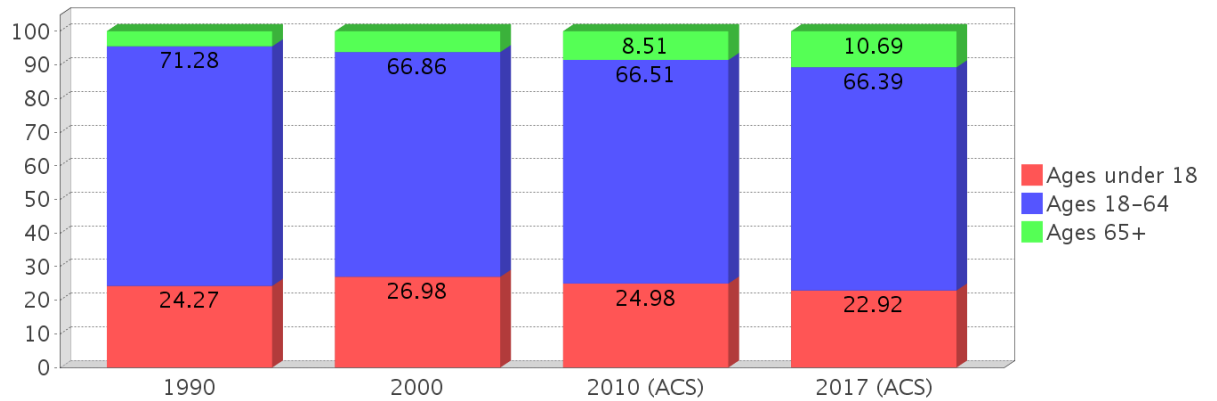
Description	1990	2000	2010 (ACS)	2017 (ACS)
White Alone	17,463 (75.66%)	23,238 (64.12%)	36,723 (77.49%)	41,200 (83.44%)
Black or African American Alone	4,005 (17.35%)	7,841 (21.64%)	6,238 (13.16%)	4,968 (10.06%)
Native Hawaiian and Other Pacific Islander Alone	8 (0.03%)	29 (0.08%)	10 (0.02%)	0 (0.00%)
Asian Alone	558 (2.42%)	689 (1.90%)	912 (1.92%)	434 (0.88%)
American Indian or Alaska Native Alone	33 (0.14%)	115 (0.32%)	61 (0.13%)	82 (0.17%)
Some Other Race Alone	1,013 (4.39%)	2,409 (6.65%)	2,328 (4.91%)	2,184 (4.42%)
Claimed 2 or More Races	NA (NA)	1,922 (5.30%)	1,116 (2.36%)	506 (1.02%)
Hispanic or Latino of Any Race	10,733 (46.50%)	22,010 (60.73%)	37,370 (78.86%)	41,738 (84.53%)
Not Hispanic or Latino	12,347 (53.50%)	14,232 (39.27%)	10,018 (21.14%)	7,636 (15.47%)
Minority	15,021 (65.08%)	30,538 (84.26%)	43,562 (91.93%)	45,677 (92.51%)



Age Trends

Description	1990	2000	2010 (ACS)	2017 (ACS)
Under Age 5	9.36%	8.51%	7.48%	6.77%
Ages 5-17	14.91%	18.47%	17.50%	16.15%
Ages 18-21	5.15%	5.76%	5.45%	4.89%
Ages 22-29	22.81%	16.19%	13.13%	12.99%
Ages 30-39	21.97%	20.06%	17.00%	14.74%
Ages 40-49	11.49%	14.15%	15.65%	16.63%
Ages 50-64	9.86%	10.70%	15.29%	17.14%
Age 65 and Over	4.45%	6.16%	8.51%	10.69%
-Ages 65-74	3.16%	3.82%	5.18%	6.73%
-Ages 75-84	1.04%	1.83%	2.52%	2.82%
-Age 85 and Over	0.24%	0.51%	0.81%	1.14%
Median Age	NA	34	36	37

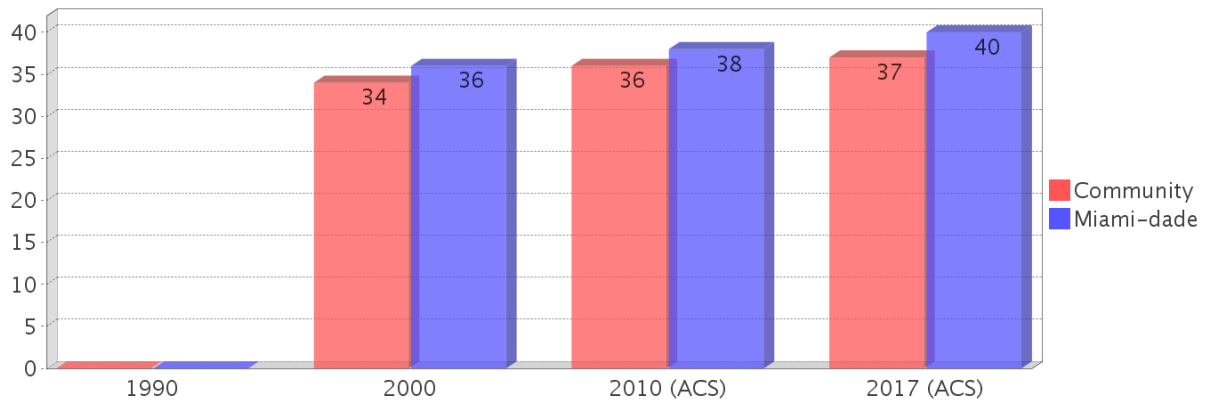
Percentage Population by Age Group



Income Trends

Description	1990	2000	2010 (ACS)	2017 (ACS)
Median Household Income	\$37,344	\$46,083	\$50,446	\$48,587
Median Family Income	\$37,292	\$45,395	\$50,969	\$51,149
Population below Poverty Level	6.28%	13.04%	11.33%	17.75%
Households below Poverty Level	5.46%	12.30%	10.95%	21.34%
Households with Public Assistance Income	2.62%	3.79%	1.43%	1.14%

Median Age Comparison

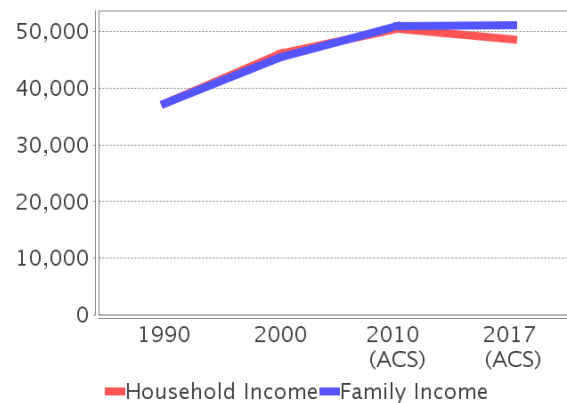


Disability Trends

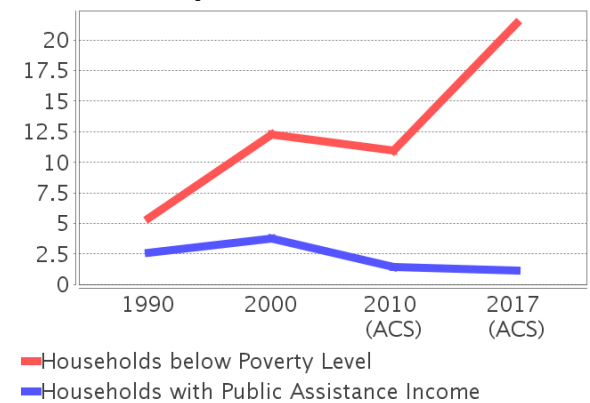
See the Data Sources section below for an explanation about the differences in disability data among the various years.

Description	1990	2000	2010 (ACS)	2017 (ACS)
Population 16 To 64 Years with a disability	678 (3.82%)	4105 (12.44%)	(NA)	(NA)
Population 20 To 64 Years with a disability	(NA)	(NA)	(NA)	1616 (5.08%)

Income Trends



Poverty and Public Assistance



Educational Attainment Trends

Age 25 and Over

Description	1990	2000	2010 (ACS)	2017 (ACS)
Less than 9th Grade	667 (4.53%)	1,656 (7.35%)	2,023 (7.86%)	2,273 (6.85%)
9th to 12th Grade, No Diploma	1,416 (9.61%)	2,858 (12.68%)	2,235 (8.69%)	2,289 (6.90%)
High School Graduate or Higher	12,647 (85.86%)	18,024 (79.97%)	21,465 (83.45%)	28,624 (86.26%)
Bachelor's Degree or Higher	3,774 (25.62%)	5,190 (23.03%)	6,252 (24.31%)	7,644 (23.03%)

Language Trends

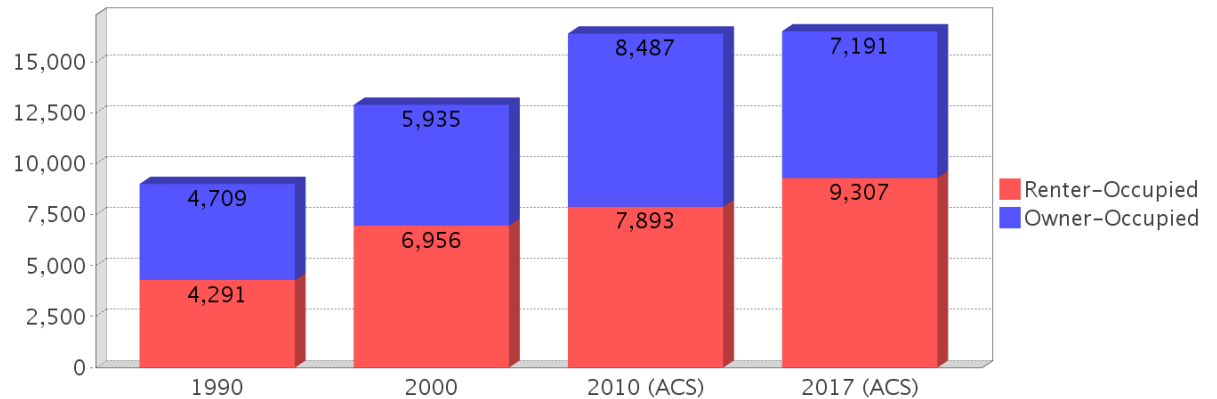
Age 5 and Over

Description	1990	2000	2010 (ACS)	2017 (ACS)
Speaks English Well	1,895 (9.06%)	4,891 (14.75%)	7,543 (20.62%)	6,956 (15.11%)
Speaks English Not Well	NA	3,683 (11.11%)	4,928 (13.47%)	6,308 (13.70%)
Speaks English Not at All	NA	1,595 (4.81%)	2,423 (6.62%)	5,897 (12.81%)
Speaks English Not Well or Not at All	1,494 (7.14%)	5,278 (15.92%)	7,351 (20.09%)	12,205 (26.51%)

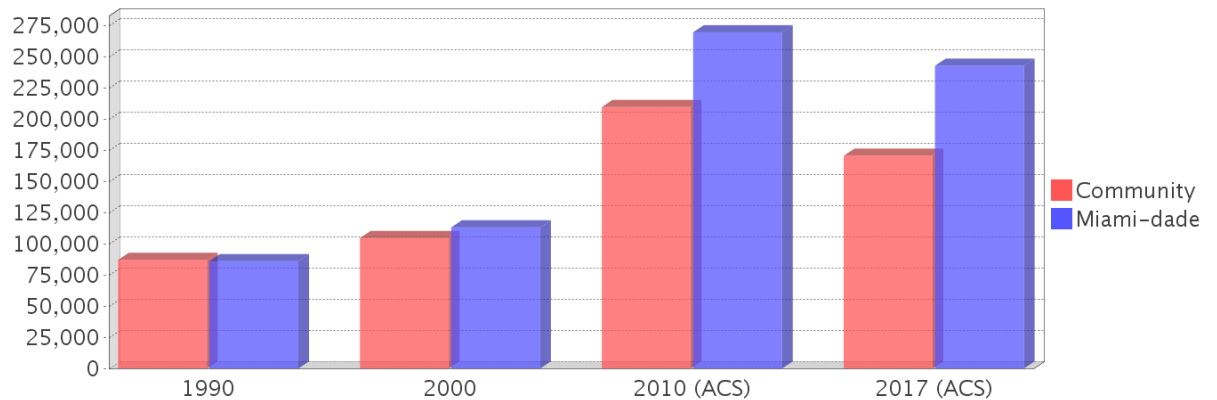
Housing Trends

Description	1990	2000	2010 (ACS)	2017 (ACS)
Total	10,042	13,755	17,889	17,785
Units per Acre	3.97	5.40	7.34	7.33
Single-Family Units	4,489	5,766	6,530	6,901
Multi-Family Units	4,430	7,971	9,832	10,831
Mobile Home Units	6	18	97	53
Owner-Occupied Units	4,709	5,935	8,487	7,191
Renter-Occupied Units	4,291	6,956	7,893	9,307
Vacant Units	1,042	864	1,509	1,288
Median Housing Value	\$87,100	\$104,600	\$209,600	\$170,600
Occupied Housing Units w/No Vehicle	249 (2.77%)	764 (5.93%)	559 (3.41%)	860 (5.21%)

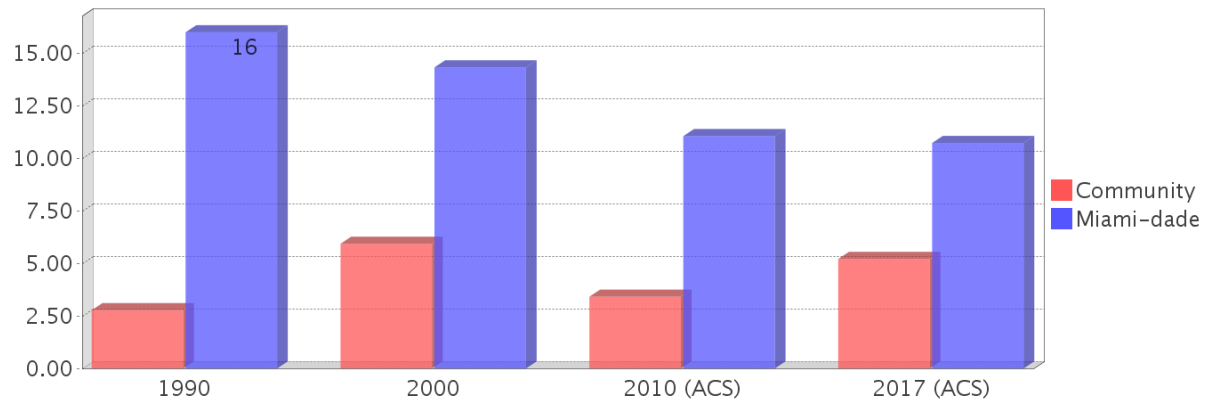
Housing Tenure



Median Housing Value Comparison

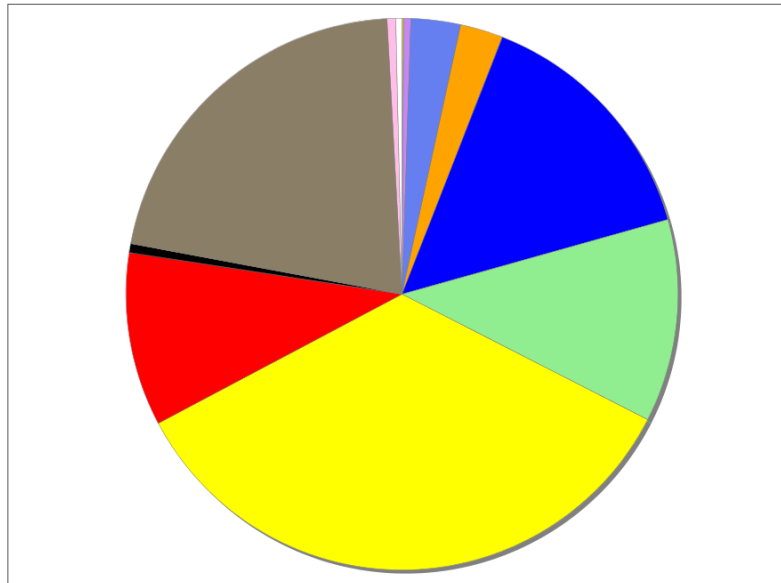


Occupied Units With No Vehicles Available



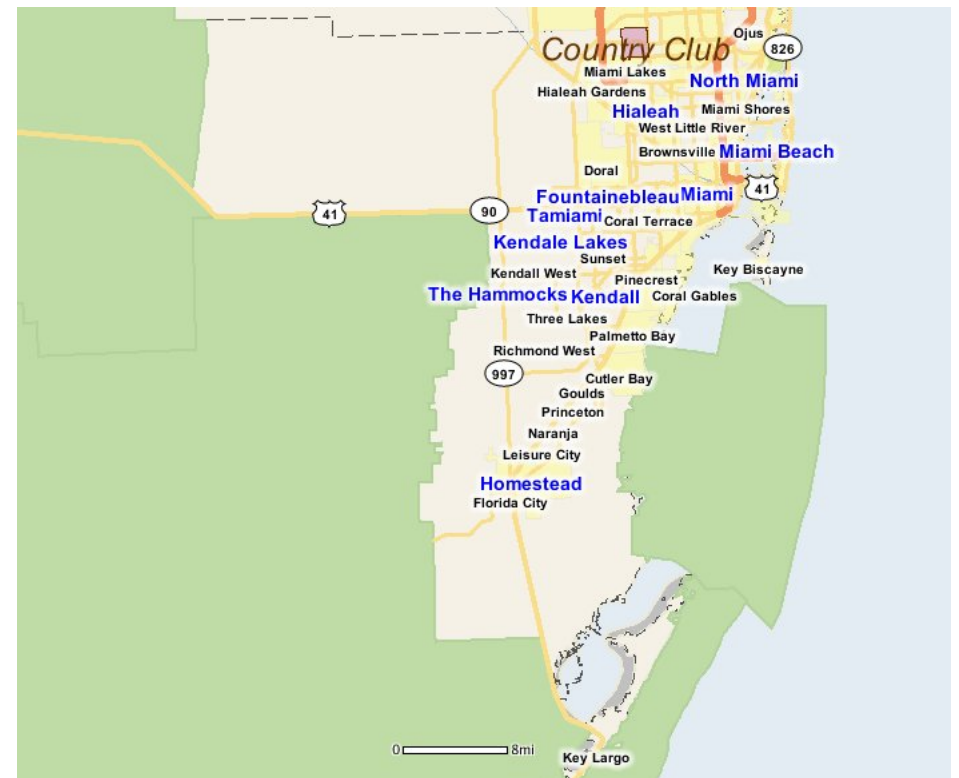
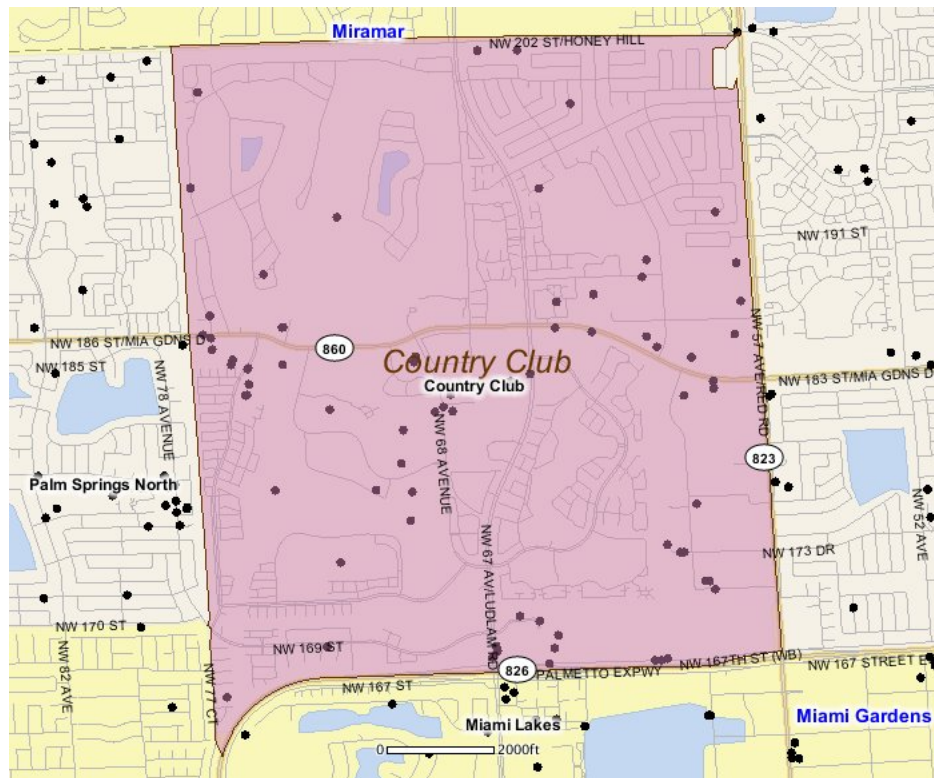
Existing Land Use

Land Use Type	Acres	Percentage
Acreage Not Zoned For Agriculture	2	0.07%
Agricultural	0	0.00%
Centrally Assessed	0	0.00%
Industrial	11	0.39%
Institutional	71	2.50%
Mining	0	0.00%
Other	61	2.15%
Public/Semi-Public	361	12.71%
Recreation	291	10.25%
Residential	851	29.96%
Retail/Office	249	8.77%
Row	13	0.46%
Vacant Residential	520	18.31%
Vacant Nonresidential	12	0.42%
Water	0	0.00%
Parcels With No Values	9	0.32%



- Acreage Not Zoned For Agriculture
- Agricultural
- Centrally Assessed
- Industrial
- Institutional
- Mining
- Other
- Public/Semi-Public
- Recreation
- Residential
- Retail/Office
- Row
- Vacant Residential
- Vacant Nonresidential
- Water
- Parcels With No Values

Location Maps



Community Facilities

The community facilities information below is useful in a variety of ways for environmental evaluations. These community resources should be evaluated for potential sociocultural effects, such as accessibility and relocation potential. The facility types may indicate the types of population groups present in the project study area. Facility staff and leaders can be sources of community information such as who uses the facility and how it is used. Additionally, community facilities are potential public meeting venues.

Assisted Housing (Points)

Facility Name	Address	Zip Code
COUNTRY CLUB VILLAS II	6855 NW 179TH STREET	33015
GOLFSIDE VILLAS	6850 N.W. 179TH STREET	33123
COUNTRY CLUB VILLAS	6855 NW 179TH STREET	33015
SIESTA POINTE	5800 NW 186TH STREET	33015
SPINNAKER COVE	18900 NW 57TH AVE	33015
GREEN VISTA	18100 NORTHWEST 68TH AVENUE	33015
VILLA ESPERANZA	18340 NW 62ND AVENUE	33015

Community Centers (Points)

Facility Name	Address	Zip Code
LIONS CLUB - MIAMI INTERAMERICAN ECUADOR	6292 N W 186ST	33015
COUNTRY CLUB OF MIAMI COMMUNITY CENTER	7335 OLD ELM DR	33015
YMCA - NORTH POINTE FAMILY CENTER	7351 NW 186TH ST	33015

Florida Parks and Recreational Facilities (Points)

Facility Name	Address	Zip Code
COUNTRY CLUB OF MIAMI TOT LOT	7620 S OAKMONT CIR	33015
COUNTRY CLUB VILLAS PARK - NW 174TH TER	NW 174TH TER	33015
COUNTRY VILLAGE PARK	6550 NW 188TH TER	33015
COUNTRY LAKE MANORS PARK	19130 NW 62ND AVE	33015
COUNTRY CLUB VILLAS PARK - NW 73RD TER	18225 NW 73RD AVE	33015
COUNTRY CLUB OF MIAMI: WEST/EAST COURSES	6801 NW 186 ST	33015
NORTH POINTE PARK	6881 NW 179 ST	33015
COUNTRY CLUB VILLAS PARK - NW 169TH CT	NW 169TH CT	33015
COUNTRY CLUB VILLAS POWERLINE PARK	6881 NW 179TH ST	33015

Government Building

Facility Name	Address	Zip Code
U S POST OFFICE - MIAMI GARDENS	6193 NW 183RD ST	33015
FLORIDA DEPARTMENT OF HIGHWAY SAFETY AND MOTOR VEHICLES SERVICE CENTER	18400 NW 75TH PLACE	33015

Healthcare Facilities (Geocoded)

Facility Name	Address	Zip Code
THE ANGEL'S MEDICAL SERVICE INC	6043 NW 167 STREET, SUITE A-27	33015
HEALING MENTAL CARE INC	5931 NW 173 DRIVE, UNIT 7A	33015
PASTEUR MEDICAL MIAMI GARDENS, LLC	5868 NW 183 STREET	33015
MARCO A NOVA M.D. P.A	6043 NW 167 STREET, SUITE A-1	33015
CHEN MEDICAL MIAMI LAKES	5961 NW 173 DRIVE	33015
ISRAEL D. ALVAREZ MD	18300 NW 62 AVENUE, SUITE 230	33015
COUNTRY CLUB MIDDLE SCHOOL	18305 NW 75 PLACE	33015
PALM PLAZA MEDICAL CENTER, LLC	16795 NW 67TH AVENUE	33015
WELLMAX (MIAMI LAKES)	6540 NW 186 STREET	33015
BRIDGEWATER WOMEN CENTER LLC	16782 NW 67 AVENUE	33015
PAIN DOCTOR CENTER INC.	5931 NW 173 DRIVE, SUITE 7B	33015
EMERALD PROFESSIONAL SERVICES, INC.	5941 NW 173 DRIVE, SUITE 6	33015
A WOMAN'S CHOICE INC.	18400 NW 75 PLACE, SUITE 118	33015
MENDEZ J CHILDREN CLINIC	5941 NW 173 DRIVE, SUITE B-6	33015

Facility Name	Address	Zip Code
LAKHANI M.D. PA HABEEB	7604 NW 186 STREET	33015
PAIN MANAGEMENT RELIEVE	6065 NW 167TH STREET, SUITE B-12	33015
INTERNAL MEDICINE OF MIAMI GARDENS	18300 NW 62 AVENUE, SUITE 300	33015
HEARTLAND HEALTH CARE	5725 NW 186 STREET	33015
SAN MARCUS MEDICAL OFFICE	5941 NW 173 DRIVE B-6	33015
PASTEUR MEDICAL MIAMI GARDENS	5900 NW 183 STREET	33015

Law Enforcement Facilities (Points)

Facility Name	Address	Zip Code
US DEPARTMENT OF HOMELAND SECURITY - USCIS HIALEAH FIELD OFFICE	5880 NW 183RD ST	33015

Public and Private Schools (Points)

Facility Name	Address	Zip Code
ACADEMY FOR YOUNG LEARNERS INC	18191 NW 68TH AVE STE 101	33015
AMERICAN SENIOR HIGH SCHOOL	18350 NW 67TH AVE	33015
SOUTHEASTERN COLLEGE-MIAMI LAKES	17395 NW 59TH AVENUE	33015
KIDDIE CORNER ACADEMY	7640 NW 186TH ST	33015
AMERICA'S CHRISTIAN FUTURE CHILD CARE LEARNING CTR	16931 NW 67TH AVE	33015
COUNTRY CLUB MIDDLE SCHOOL	18305 NW 75TH PLACE	33015
HIGHLY INQUISITIVE & VERSATILE (HIVE) PREPARATORY	5855 NW 171ST ST	33015
LITTLE COLLEGE AT LUDLAM C. CORP.	6545 NW 169TH ST	33015
JOELLA GOOD ELEMENTARY SCHOOL	6350 NW 188TH TER	33015
SUNRISE CHRISTIAN ACADEMY	18400 NW 68TH AVE	33015
DADE CHRISTIAN SCHOOL	6601 NW 167TH ST	33015
SOUTH FLORIDA AUTISM CHARTER SCHOOL INC	13835 NW 97TH AVE	33018
SPRINGVIEW ACADEMY	18505 NW 75 PL	33016
MY LITTLE SCHOOL ACADEMY CORP	5855 NW 171ST ST UNIT 22	33015

Religious Centers (Points)

Facility Name	Address	Zip Code
ORTHODOX CATHEDRAL OF CHRIST THE SAVIOR	16601 NORTHWEST 77TH COURT	33016
NORTHWEST DADE SEVENTH DAY ADVENTIST CHURCH	6500 NW 202 ST	33015
JEHOVAH'S WITNESSES	18201 NW 68TH AVENUE	33015
NEW TESTAMENT BAPTIST CHURCH	6601 NORTHWEST 167TH STREET	33015
SUNRISE PRESBYTERIAN CHURCH	18400 NW 68TH AVENUE	33015
IGLESIA DE CRISTO LIBRES POR	20151 NW 67TH AVENUE	33015

US Census Places

Facility Name
Miami Lakes
Country Club
Miramar
Palm Springs North

Block Groups

The following Census Block Groups were used to calculate demographics for this report.

1990 Census Block Groups

120250101179, 120250101069, 120250093043, 120250100057, 120250100072, 120111103007, 120250100058, 120250101189, 120250101063, 120250101062

2000 Census Block Groups

120860101451, 120860100072, 120860101311, 120860101441, 120860101423, 120860101442, 120111103221, 120860100058, 120860100057, 120860093043, 120860101452, 120860101322, 120860101421, 120860093049, 120860101432, 120860101422, 120860101431

2010 Census Block Groups

120860121001, 120860120003, 120860093132, 120111103222, 120860121007, 120860120002, 120860117001, 120860116001, 120860119003, 120860117003, 120860121004, 120860121002, 120860116002, 120860093122, 120860117002, 120860100054, 120860116003, 120860121003, 120860120001, 120860100131, 120860100053, 120860120004, 120860118001, 120860100151, 120860123002, 120111103221, 120860119002, 120860121005, 120860119001, 120860121006, 120860118002, 120860118001, 120860120001, 120860117004

2017 Census Block Groups

120860116001, 120860093122, 120860100054, 120860121004, 120860120003, 120111103221, 120860119002, 120860121005, 120860119001, 120860093132, 120860121002, 120860117002, 120860120002, 120860121001, 120860119003, 120860117003, 120860117001, 120860117004, 120860100151, 120860100131, 120860100053, 120860121006, 120860118002, 120860118001, 120860120001, 120860121007, 120860120004, 120860116002, 120860123002, 120860121003, 120111103222, 120860116003

Data Sources

Area

The geographic area of the community based on a user-specified community boundary or area of interest (AOI) boundary.

Jurisdiction

Jurisdiction(s) includes local government boundaries that intersect the community or AOI boundary.

Demographic Data

Demographic data reported under the headings General Population Trends, Race and Ethnicity Trends, Age Trends, Income Trends, Educational Attainment Trends, Language Trends, and Housing Trends is from the U.S. Decennial Census (1990, 2000) and the American Community Survey (ACS) 5-year estimates from 2006-2010 and 2013-2017. The data was gathered at the block group level for user-specified community boundaries and AOIs, and at the county level for counties. Depending on the dataset, the data represents 100% counts (Census Summary File 1) or sample-based information (Census Summary File 3 or ACS).

About the Census Data:

User-specified community boundaries and AOIs do not always correspond precisely to block group boundaries. In these instances, adjustment of the geographic area and data for affected block groups is required to estimate the actual population. To improve the accuracy of such estimates in the SDR report, the census block group data was adjusted to

exclude all census blocks with a population of two or fewer. These areas were eliminated from the corresponding years' block groups. Next, the portion of the block group that lies outside of the community or AOI boundary was removed. The demographics within each block group were then recalculated, assuming an equal area distribution of the population. Note that there may be areas where there is no population.

Use caution when comparing the 100% count data (Decennial Census) to the sample-based data (ACS). In any given year, about one in 40 or 2.5% of U.S. households will receive the ACS questionnaire. Over any five-year period, about one in eight households will receive the questionnaire, as compared to about one in six that received the long form questionnaire for the Decennial Census 2000. (Source: <http://mcdc.missouri.edu/pub/data/acs/Readme.shtml>) The U.S. Census Bureau provides help with this process:

<https://www.census.gov/programs-surveys/acs/guidance/comparing-acs-data/2017.html>

Use caution when interpreting changes in Race and Ethnicity over time. Starting with the 2000 Decennial Census, respondents were given a new option of selecting one or more race categories. Also in 2000, the placement of the question about Hispanic origin changed, helping to increase responsiveness to the Hispanic-origin question. Because of these and other changes, the 1990 data on race and ethnicity are not directly comparable with data from later censuses.

(Source: <http://www.census.gov/prod/2001pubs/c2kbr01-1.pdf>;

<http://www.census.gov/pred/www/rpts/Race%20and%20Ethnicity%20FINAL%20report.pdf>)

The "Minority" calculations are derived from Census and ACS data using both the race and ethnicity responses. On this report, "Minority" refers to individuals who list a race other than White and/or list their ethnicity as Hispanic/Latino. In other words, people who are multi-racial, any single race other than White, or Hispanic/Latino of any race are considered minorities.

Disability data is not included in the 2010 Decennial Census, or the 2006-2010 ACS. This data is available in the 2013-2017 ACS.

Because of changes made to the Census and ACS questions between 1990 and 2017, disability variables should not be compared from year to year. For example: 1) With the 1990 data the disabilities are listed as a "work disability" while this distinction is not made with 2000 or 2017 ACS data; 2) The 2017 ACS data includes the institutionalized population (e.g. persons in prisons and group homes), while this population is not included in 1990 or 2000; 3) the age groupings changed over the years.

Please take the following two concerns into account when viewing this data: 1) With the 1990 data the disabilities are listed as a "work disability" while this distinction is not made with 2000 or 2017 ACS data; 2) The 2017 ACS data includes the institutionalized population (e.g. persons in prisons and group homes), while this population is not included in 1990 or 2000.

The category Bachelor's Degree or Higher under the heading Educational Attainment Trends is a subset of the category High School Graduate or Higher.

Income of households. This includes the income of the householder and all other individuals 15 years old and over in the household, whether they are related to the householder or not. Because many households consist of only one person, average household income is usually less than average family income.

Income of families. In compiling statistics on family income, the incomes of all members 15 years old and over related to the householder are summed and treated as a single amount.

Age Trends median age for 1990 is not available.

Land Use Data

The Land Use information Indicates acreages and percentages for the generalized land use types used to group parcel-specific, existing land use assigned by the county property appraiser office according to the Florida Department of

Revenue land use codes.

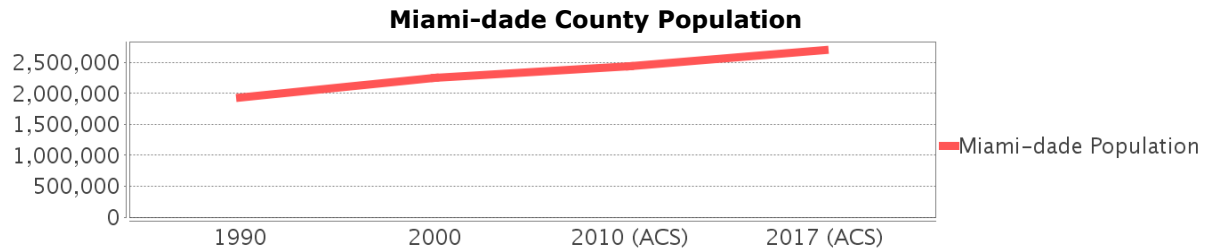
Community Facilities Data

- Assisted Rental Housing Units - Identifies multifamily rental developments that receive funding assistance under federal, state, and local government programs to offer affordable housing as reported by the Shimberg Center for Housing Studies, University of Florida.
- Mobile Home Parks - Identifies approved or acknowledged mobile home parks reported by the Florida Department of Business and Professional Regulation and Florida Department of Health.
- Migrant Camps - Identifies migrant labor camp facilities inspected by the Florida Department of Health.
- Group Care Facilities - Identifies group care facilities inspected by the Florida Department of Health.
- Community Center and Fraternal Association Facilities - Identifies facilities reported by multiple sources.
- Law Enforcement Correctional Facilities - Identifies facilities reported by multiple sources.
- Cultural Centers - Identifies cultural centers including organizations, buildings, or complexes that promote culture and arts (e.g., aquariums and zoological facilities; arboreta and botanical gardens; dinner theaters; drive-ins; historical places and services; libraries; motion picture theaters; museums and art galleries; performing arts centers; performing arts theaters; planetariums; studios and art galleries; and theater producers stage facilities) reported by multiple sources.
- Fire Department and Rescue Station Facilities - Identifies facilities reported by multiple sources.
- Government Buildings - Identifies local, state, and federal government buildings reported by multiple sources.
- Health Care Facilities - Identifies health care facilities including abortion clinics, dialysis clinics, medical doctors, nursing homes, osteopaths, state laboratories/clinics, and surgicenters/walk-in clinics reported by the Florida Department of Health.
- Hospital Facilities - Identifies hospital facilities reported by multiple sources.
- Law Enforcement Facilities - Identifies law enforcement facilities reported by multiple sources.
- Parks and Recreational Facilities - Identifies parks and recreational facilities reported by multiple sources.
- Religious Center Facilities - Identifies religious centers including churches, temples, synagogues, mosques, chapels, centers, and other types of religious facilities reported by multiple sources.
- Private and Public Schools - Identifies private and public schools reported by multiple sources.
- Social Service Centers - Identifies social service centers reported by multiple sources.
- Veteran Organizations and Facilities

Miami-dade County Demographic Profile

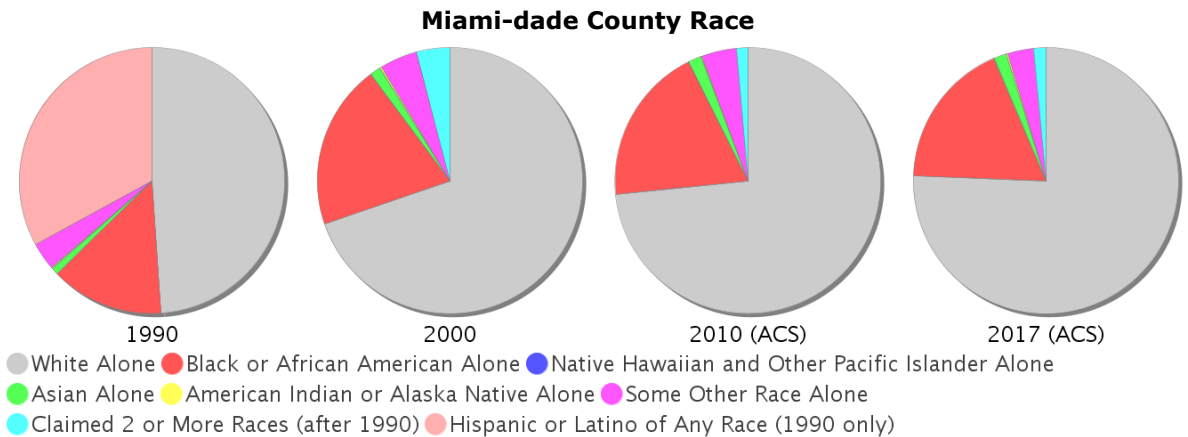
General Population Trends - Miami-dade

Description	1990	2000	2010 (ACS)	2017 (ACS)
Total Population	1,937,094	2,253,362	2,445,374	2,702,602
Total Households	692,355	776,774	827,556	858,289
Average Persons per Acre	1.528	1.774	1.925	2.128
Average Persons per Household	2.798	2.84	3.00	3.09
Average Persons per Family	3.413	3.488	3.591	3.926
Males	928,411	1,086,558	1,182,784	1,311,997
Females	1,008,683	1,166,804	1,262,590	1,390,605



Race and Ethnicity Trends - Miami-dade

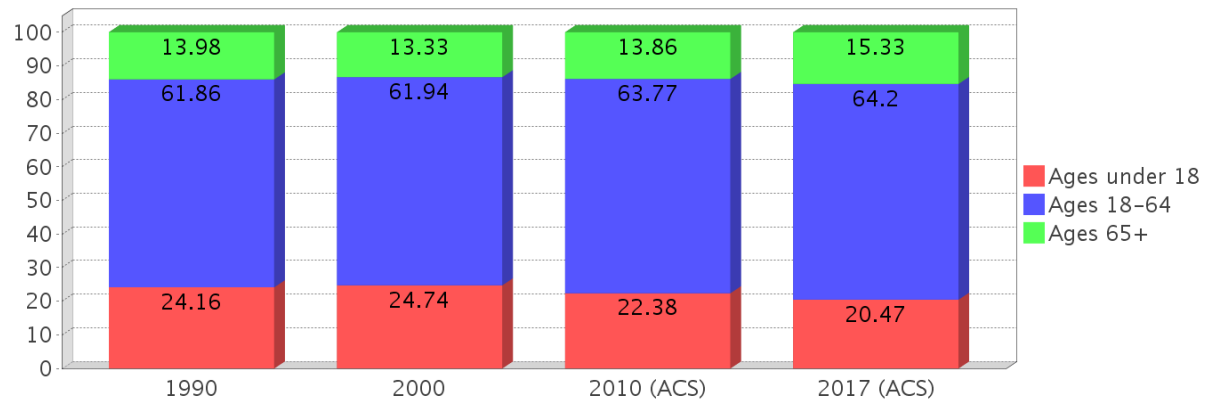
Description	1990	2000	2010 (ACS)	2017 (ACS)
White Alone	1,413,015 (72.95%)	1,570,990 (69.72%)	1,794,730 (73.39%)	2,043,272 (75.60%)
Black or African American Alone	397,993 (20.55%)	452,333 (20.07%)	470,326 (19.23%)	485,602 (17.97%)
Native Hawaiian and Other Pacific Islander Alone	(NA)	605 (0.03%)	649 (0.03%)	724 (0.03%)
Asian Alone	25,869 (1.34%)	30,692 (1.36%)	38,813 (1.59%)	42,770 (1.58%)
American Indian or Alaska Native Alone	3,066 (0.16%)	4,841 (0.21%)	3,572 (0.15%)	4,040 (0.15%)
Some Other Race Alone	96,713 (4.99%)	102,436 (4.55%)	102,938 (4.21%)	84,892 (3.14%)
Claimed 2 or More Races	(NA)	91,465 (4.06%)	34,346 (1.40%)	41,302 (1.53%)
Hispanic or Latino of Any Race	953,407 (49.22%)	1,291,681 (57.32%)	1,565,410 (64.02%)	1,823,038 (67.45%)
Not Hispanic or Latino	983,687 (50.78%)	961,681 (42.68%)	879,964 (35.98%)	879,564 (32.55%)
Minority	2,112,884 (109.07%)	1,787,468 (79.32%)	2,112,884 (86.40%)	2,331,369 (86.26%)



Age Trends - Miami-dade

Description	1990	2000	2010 (ACS)	2017 (ACS)
Under Age 5	7.21%	6.43%	6.20%	5.78%
Ages 5-17	16.95%	18.31%	16.18%	14.69%
Ages 18-21	5.60%	5.24%	5.83%	5.06%
Ages 22-29	13.10%	10.97%	10.98%	11.21%
Ages 30-39	16.06%	16.33%	14.14%	13.89%
Ages 40-49	12.47%	14.49%	15.67%	14.68%
Ages 50-64	14.63%	14.90%	17.15%	19.37%
Age 65 and Over	13.98%	13.33%	13.86%	15.33%
-Ages 65-74	7.54%	7.23%	7.34%	8.19%
-Ages 75-84	4.88%	4.41%	4.71%	4.95%
-Age 85 and Over	1.55%	1.69%	1.81%	2.20%
Median Age	NA	36	38	40

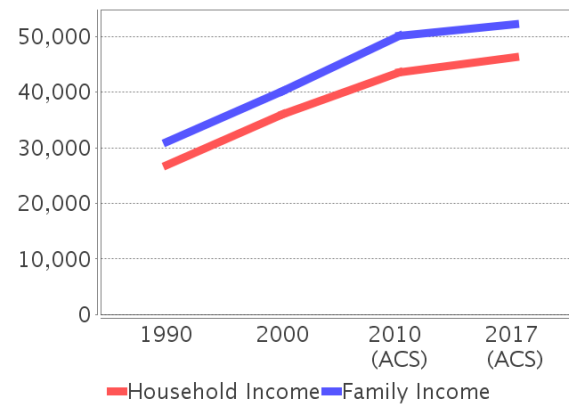
Percentage Population by Age Group - Miami-dade



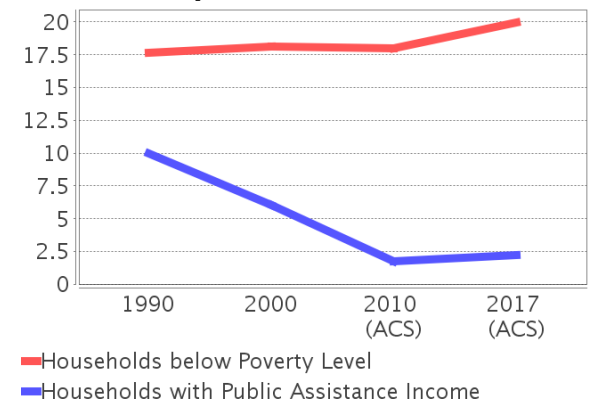
Income Trends - Miami-dade

Description	1990	2000	2010 (ACS)	2017 (ACS)
Median Household Income	\$26,909	\$35,966	\$43,605	\$46,338
Median Family Income	\$31,113	\$40,260	\$50,065	\$52,235
Population below Poverty Level	17.94%	17.97%	17.18%	18.98%
Households below Poverty Level	17.62%	18.10%	18.02%	19.95%
Households with Public Assistance Income	9.96%	6.01%	1.74%	2.24%

Income Trends



Poverty and Public Assistance



Disability Trends - Miami-dade

See the Data Sources section below for an explanation about the differences in disability data among the various years.

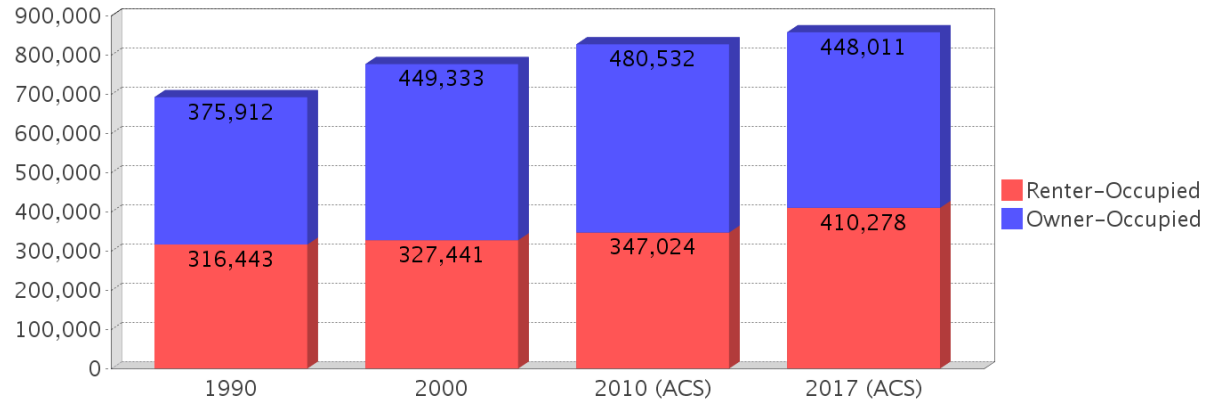
Description	1990	2000	2010 (ACS)	2017 (ACS)
Population 16 To 64 Years with a disability	78,949 (5.28%)	324,062 (15.60%)	NA (NA)	NA (NA)
Population 20 To 64 Years with a disability	NA (NA)	NA (NA)	NA (NA)	114,936 (6.96%)

Educational Attainment Trends - Miami-dade

Age 25 and Over

Description	1990	2000	2010 (ACS)	2017 (ACS)
Less than 9th Grade	228,426 (17.83%)	219,066 (14.68%)	202,413 (12.23%)	194,934 (10.23%)
9th to 12th Grade, No Diploma	219,856 (17.16%)	260,287 (17.45%)	178,335 (10.77%)	167,399 (8.78%)
High School Graduate or Higher	833,013 (65.01%)	1,012,436 (67.87%)	1,274,809 (77.00%)	1,543,966 (80.99%)
Bachelor's Degree or Higher	240,460 (18.77%)	323,399 (21.68%)	434,574 (26.25%)	530,196 (27.81%)

Housing Tenure - Miami-dade



Language Trends - Miami-dade

Age 5 and Over

Description	1990	2000	2010 (ACS)	2017 (ACS)
Speaks English Well	221,943 (12.34%)	285,783 (13.55%)	302,397 (13.18%)	333,659 (13.10%)
Speaks English Not Well	NA (NA)	261,782 (12.42%)	294,777 (12.85%)	317,308 (12.46%)
Speaks English Not at All	NA (NA)	184,249 (8.74%)	217,650 (9.49%)	241,775 (9.49%)
Speaks English Not Well or Not at All	341,005 (18.96%)	446,031 (21.15%)	512,427 (22.34%)	559,083 (21.96%)

Housing Trends - Miami-dade

Description	1990	2000	2010 (ACS)	2017 (ACS)
Total	771,288	852,278	980,580	1,008,908
Units per Acre	0.608	0.671	0.772	0.794
Single-Family Units	365,600	448,569	508,364	503,457
Multi-Family Units	301,870	387,550	457,465	492,080
Mobile Home Units	15,359	15,338	14,234	13,071
Owner-Occupied Units	375,912	449,333	480,532	448,011
Renter-Occupied Units	316,443	327,441	347,024	410,278
Vacant Units	78,933	75,504	153,024	150,619
Median Housing Value	\$86,000	\$113,200	\$269,600	\$242,800
Occupied Housing Units w/No Vehicle	110,809 (16.00%)	111,323 (14.33%)	91,558 (11.06%)	92,055 (10.73%)

County Data Sources

Demographic data reported is from the U.S. Decennial Census (1990, 2000) and the American Community Survey (ACS) 5-year estimates from 2006-2010 and 2013-2017. The data was gathered at the county level. Depending on the dataset, the data represents 100% counts (Census Summary File 1) or sample-based information (Census Summary File 3 or ACS).

About the Census Data:

Use caution when comparing the 100% count data (Decennial Census) to the sample-based data (ACS). In any given year, about one in 40 or 2.5% of U.S. households will receive the ACS questionnaire. Over any five-year period, about one in eight households will receive the questionnaire, as compared to about one in six that received the long form questionnaire for the Decennial Census 2000. (Source: <http://mcdc.missouri.edu/pub/data/acs/Readme.shtml>) The U.S. Census Bureau provides help with this process:

<https://www.census.gov/programs-surveys/acs/guidance/comparing-acs-data/2017.html>

Use caution when interpreting changes in Race and Ethnicity over time. Starting with the 2000 Decennial Census, respondents were given a new option of selecting one or more race categories. Also in 2000, the placement of the question about Hispanic origin changed, helping to increase responsiveness to the Hispanic-origin question. Because of these and other changes, the 1990 data on race and ethnicity are not directly comparable with data from later censuses. (Source: <http://www.census.gov/prod/2001pubs/c2kbr01-1.pdf>; <http://www.census.gov/pred/www/rpts/Race%20and%20Ethnicity%20FINAL%20report.pdf>)

The "Minority" calculations are derived from Census and ACS data using both the race and ethnicity responses. On this report, "Minority" refers to individuals who list a race other than White and/or list their ethnicity as Hispanic/Latino. In other words, people who are multi-racial, any single race other than White, or Hispanic/Latino of any race are considered minorities.

Disability data is not included in the 2010 Decennial Census, or the 2006-2010 ACS. This data is available in the 2013-2017 ACS.

Because of changes made to the Census and ACS questions between 1990 and 2017, disability variables should not be compared from year to year. For example: 1) With the 1990 data the disabilities are listed as a "work disability" while this distinction is not made with 2000 or 2017 ACS data; 2) The 2017 ACS data includes the institutionalized population (e.g. persons in prisons and group homes), while this population is not included in 1990 or 2000; 3) the age groupings changed over the years.

Please take the following two concerns into account when viewing this data: 1) With the 1990 data the disabilities are listed as a "work disability" while this distinction is not made with 2000 or 2017 ACS data; 2) The 2017 ACS data includes the institutionalized population (e.g. persons in prisons and group homes), while this population is not included in 1990 or 2000.

source:

<https://www.census.gov/people/disability/methodology/acs.html>

<https://www.census.gov/population/www/cen2000/90vs00/index.html>

The category Bachelor's Degree or Higher under the heading Educational Attainment Trends is a subset of the category High School Graduate or Higher.

Metadata

- Community and Fraternal Centers https://etdmpub.florida-et.org/metadata/gc_communitycenter.htm
- Correctional Facilities in Florida https://etdmpub.florida-et.org/metadata/gc_correctional.htm
- Cultural Centers in Florida https://etdmpub.florida-et.org/metadata/gc_culturecenter.htm
- Fire Department and Rescue Station Facilities in Florida https://etdmpub.florida-et.org/metadata/gc_firestat.htm
- Local, State, and Federal Government Buildings in Florida https://etdmpub.florida-et.org/metadata/gc_govbuild.htm
- Florida Health Care Facilities https://etdmpub.florida-et.org/metadata/gc_health.htm
- Hospital Facilities in Florida https://etdmpub.florida-et.org/metadata/gc_hospitals.htm
- Law Enforcement Facilities in Florida https://etdmpub.florida-et.org/metadata/gc_lawenforce.htm
- Florida Parks and Recreational Facilities https://etdmpub.florida-et.org/metadata/gc_parks.htm
- Religious Centers https://etdmpub.florida-et.org/metadata/gc_religion.htm
- Florida Public and Private Schools https://etdmpub.florida-et.org/metadata/gc_schools.htm
- Social Service Centers https://etdmpub.florida-et.org/metadata/gc_socialservice.htm
- Assisted Rental Housing Units in Florida https://etdmpub.florida-et.org/metadata/gc_assisted_housing.htm
- Group Care Facilities <https://etdmpub.florida-et.org/metadata/groupcare.htm>
- Mobile Home Parks in Florida https://etdmpub.florida-et.org/metadata/gc_mobilehomes.htm
- Migrant Camps in Florida <https://etdmpub.florida-et.org/metadata/migrant.htm>
- Veteran Organizations and Facilities https://etdmpub.florida-et.org/metadata/gc_veterans.htm
- Generalized Land Use - Florida DOT District 6 https://etdmpub.florida-et.org/metadata/d6_lu_gen.htm
- Census Block Groups in Florida https://etdmpub.florida-et.org/metadata/e2_cenacs_cci.htm
- 1990 Census Block Groups in Florida https://etdmpub.florida-et.org/metadata/e2_cenblkgrp_1990_cci.htm
- 2000 Census Block Groups in Florida https://etdmpub.florida-et.org/metadata/e2_cenblkgrp_2000_cci.htm
- 2010 Census Block Groups in Florida https://etdmpub.florida-et.org/metadata/e2_cenblkgrp_2010_cci.htm