

# Sociocultural Data Report

## Ellenton

**Area:** 4.50 square miles  
**Jurisdiction(s):** **Cities:** Palmetto  
**Counties:** Manatee

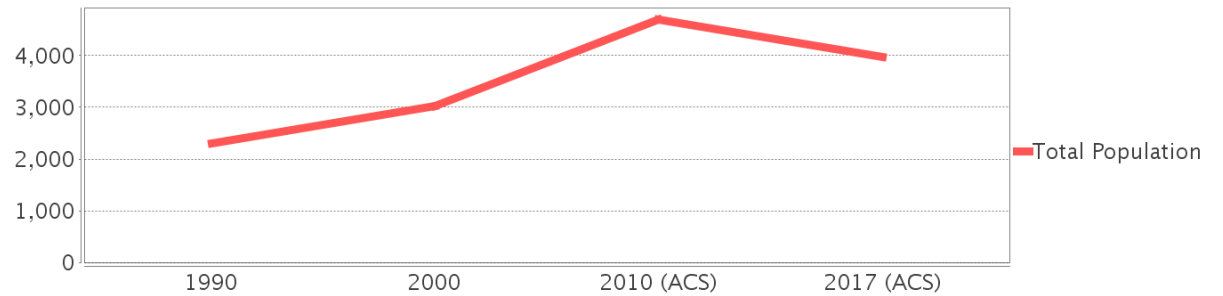
## General Population Trends

Description	1990	2000	2010 (ACS)	2017 (ACS)
Total Population	2,304	3,020	4,695	3,975
Total Households	1,027	1,398	1,942	1,748
Average Persons per Acre	1.76	2.93	3.89	3.53
Average Persons per Household	2.66	2.69	2.50	2.88
Average Persons per Family	2.95	3.21	3.17	3.45
Males	1,112	1,375	2,306	1,906
Females	1,191	1,645	2,390	2,069

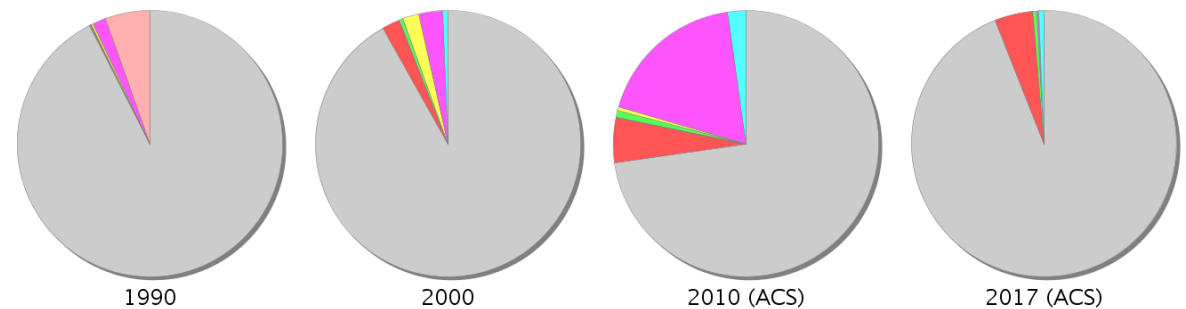
## Race and Ethnicity Trends

Description	1990	2000	2010 (ACS)	2017 (ACS)
White Alone	2,253 (97.79%)	2,773 (91.82%)	3,414 (72.72%)	3,737 (94.01%)
Black or African American Alone	4 (0.17%)	67 (2.22%)	258 (5.50%)	186 (4.68%)
Native Hawaiian and Other Pacific Islander Alone	0 (0.00%)	0 (0.00%)	1 (0.02%)	0 (0.00%)
Asian Alone	2 (0.09%)	14 (0.46%)	38 (0.81%)	20 (0.50%)
American Indian or Alaska Native Alone	6 (0.26%)	60 (1.99%)	20 (0.43%)	0 (0.00%)
Some Other Race Alone	38 (1.65%)	87 (2.88%)	862 (18.36%)	7 (0.18%)
Claimed 2 or More Races	NA (NA)	19 (0.63%)	103 (2.19%)	26 (0.65%)
Hispanic or Latino of Any Race	133 (5.77%)	232 (7.68%)	1,285 (27.37%)	245 (6.16%)
Not Hispanic or Latino	2,171 (94.23%)	2,788 (92.32%)	3,410 (72.63%)	3,730 (93.84%)
Minority	145 (6.29%)	336 (11.13%)	1,645 (35.04%)	462 (11.62%)

## Population

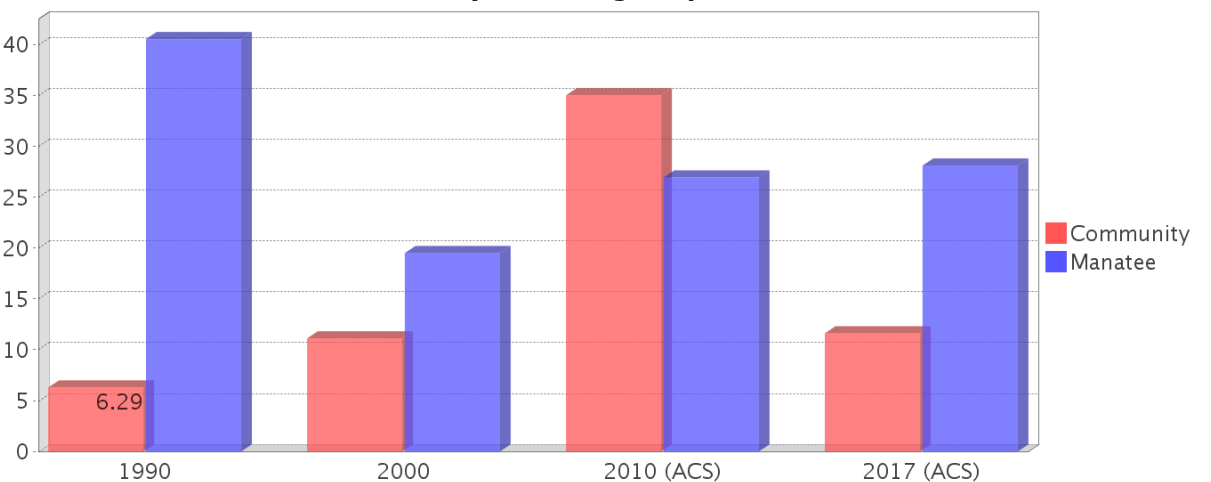


## Race



● White Alone 
 ● Black or African American Alone 
 ● Native Hawaiian and Other Pacific Islander Alone 
 ● Asian Alone 
 ● American Indian or Alaska Native Alone 
 ● Some Other Race Alone 
 ● Claimed 2 or More Races (after 1990) 
 ● Hispanic or Latino of Any Race (1990 only)

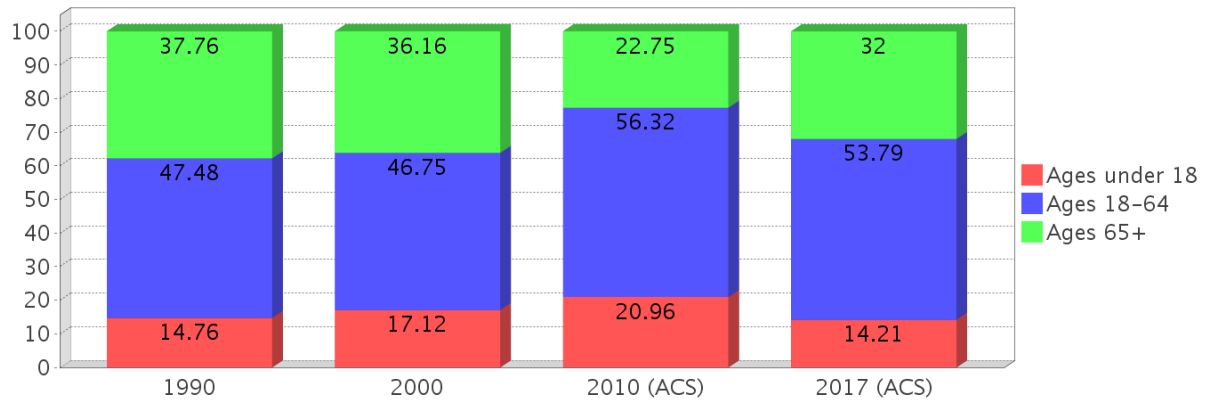
## Minority Percentage Population



### Age Trends

Description	1990	2000	2010 (ACS)	2017 (ACS)
Under Age 5	5.25%	5.66%	7.75%	4.00%
Ages 5-17	9.51%	11.46%	13.21%	10.21%
Ages 18-21	2.65%	1.89%	5.26%	2.97%
Ages 22-29	8.42%	7.62%	10.84%	6.64%
Ages 30-39	10.24%	9.77%	11.27%	14.14%
Ages 40-49	9.20%	12.32%	11.37%	8.15%
Ages 50-64	16.97%	15.17%	17.57%	21.89%
Age 65 and Over	37.76%	36.16%	22.75%	32.00%
-Ages 65-74	20.31%	16.72%	10.54%	21.08%
-Ages 75-84	14.11%	15.17%	8.88%	6.77%
-Age 85 and Over	3.34%	4.27%	3.30%	4.15%
Median Age	NA	33	34	39

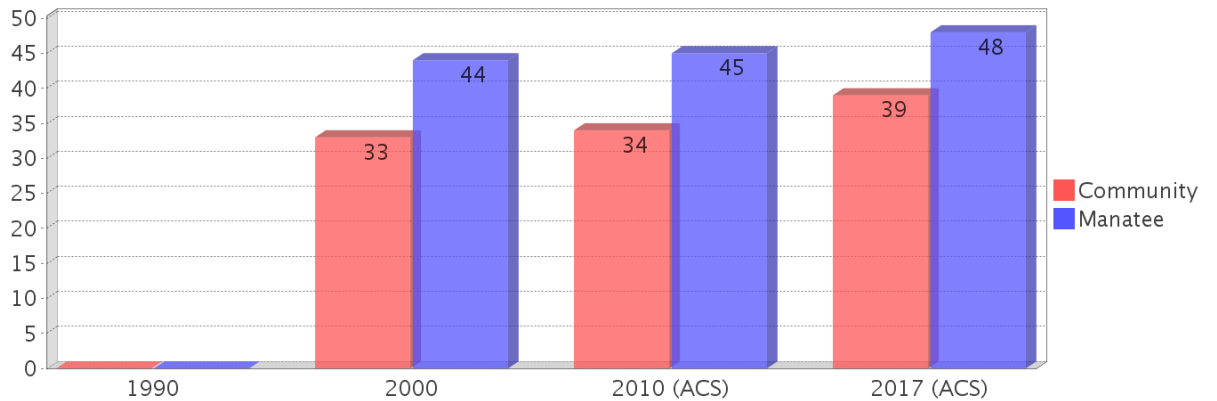
### Percentage Population by Age Group



### Income Trends

Description	1990	2000	2010 (ACS)	2017 (ACS)
Median Household Income	\$22,928	\$29,395	\$36,689	\$50,765
Median Family Income	\$24,085	\$33,700	\$38,214	\$59,464
Population below Poverty Level	8.68%	7.91%	13.61%	9.99%
Households below Poverty Level	8.67%	9.59%	13.49%	8.70%
Households with Public Assistance Income	4.09%	0.57%	0.46%	2.63%

### Median Age Comparison

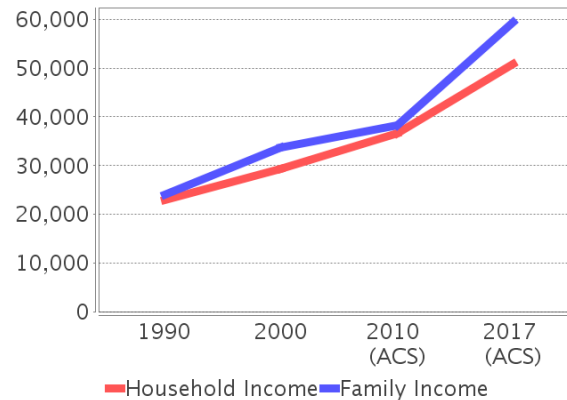


### Disability Trends

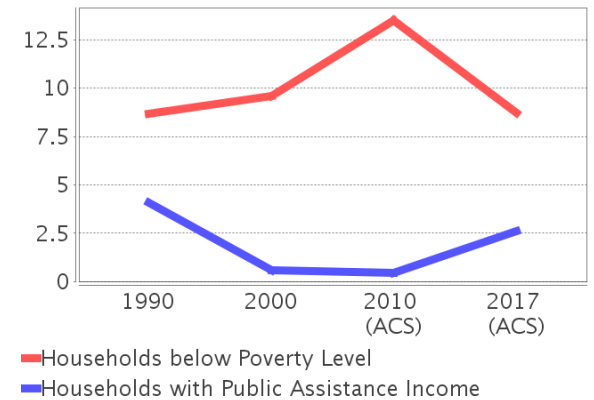
See the Data Sources section below for an explanation about the differences in disability data among the various years.

Description	1990	2000	2010 (ACS)	2017 (ACS)
Population 16 To 64 Years with a disability	98 (4.92%)	235 (8.30%)	(NA)	(NA)
Population 20 To 64 Years with a disability	(NA)	(NA)	(NA)	219 (10.40%)

### Income Trends



### Poverty and Public Assistance



## Educational Attainment Trends

Age 25 and Over

Description	1990	2000	2010 (ACS)	2017 (ACS)
Less than 9th Grade	202 (10.73%)	66 (2.78%)	92 (3.54%)	43 (1.36%)
9th to 12th Grade, No Diploma	419 (22.26%)	327 (13.79%)	231 (8.89%)	169 (5.34%)
High School Graduate or Higher	1,261 (67.00%)	1,980 (83.47%)	2,276 (87.57%)	2,952 (93.33%)
Bachelor's Degree or Higher	261 (13.87%)	272 (11.47%)	290 (11.16%)	886 (28.01%)

## Language Trends

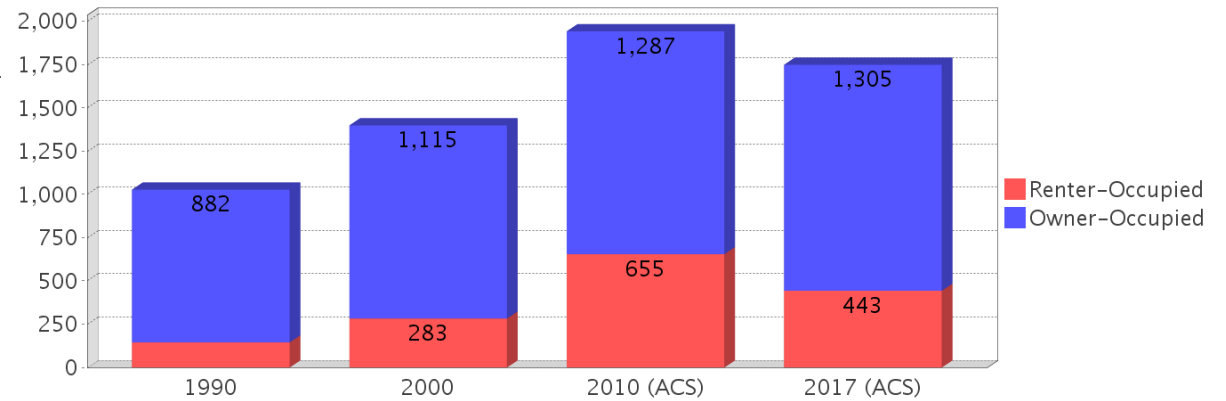
Age 5 and Over

Description	1990	2000	2010 (ACS)	2017 (ACS)
Speaks English Well	26 (1.20%)	57 (2.00%)	36 (1.12%)	31 (0.81%)
Speaks English Not Well	NA (NA)	54 (1.90%)	193 (5.99%)	64 (1.68%)
Speaks English Not at All	NA (NA)	8 (0.28%)	0 (0.00%)	0 (0.00%)
Speaks English Not Well or Not at All	62 (2.85%)	62 (2.18%)	193 (5.99%)	64 (1.68%)

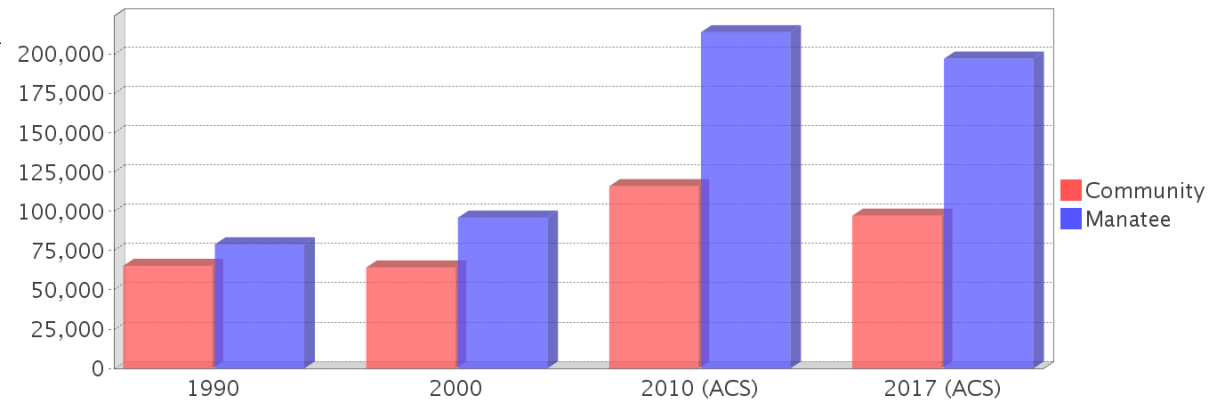
## Housing Trends

Description	1990	2000	2010 (ACS)	2017 (ACS)
Total	1,240	1,690	2,374	2,210
Units per Acre	0.59	0.87	1.22	1.13
Single-Family Units	514	651	947	841
Multi-Family Units	86	212	227	224
Mobile Home Units	424	821	868	1,144
Owner-Occupied Units	882	1,115	1,287	1,305
Renter-Occupied Units	145	283	655	443
Vacant Units	213	292	431	462
Median Housing Value	\$65,250	\$64,200	\$116,000	\$97,200
Occupied Housing Units w/No Vehicle	30 (2.92%)	50 (3.58%)	55 (2.83%)	110 (6.29%)

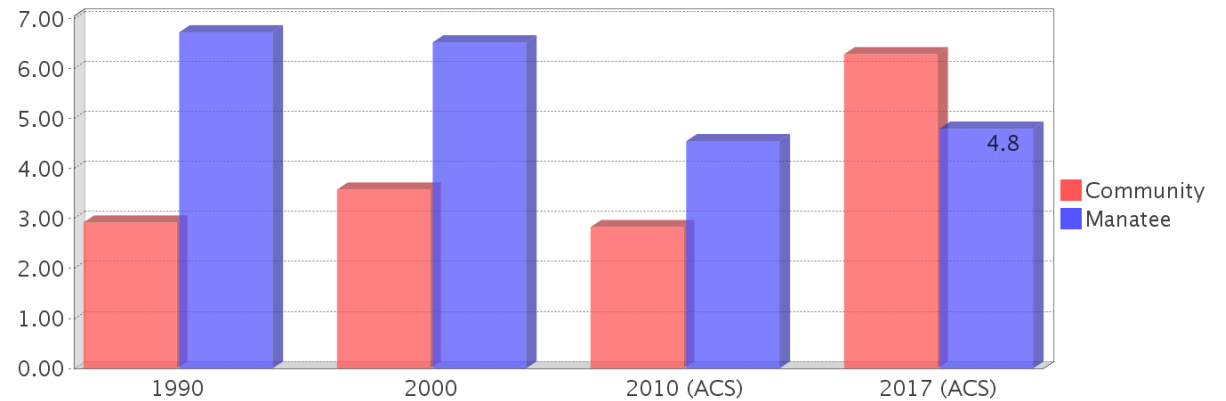
## Housing Tenure



## Median Housing Value Comparison

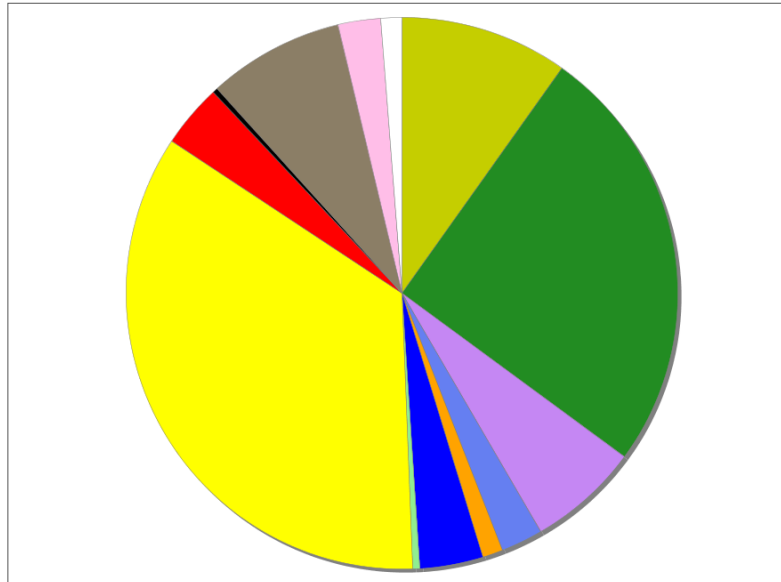


## Occupied Units With No Vehicles Available



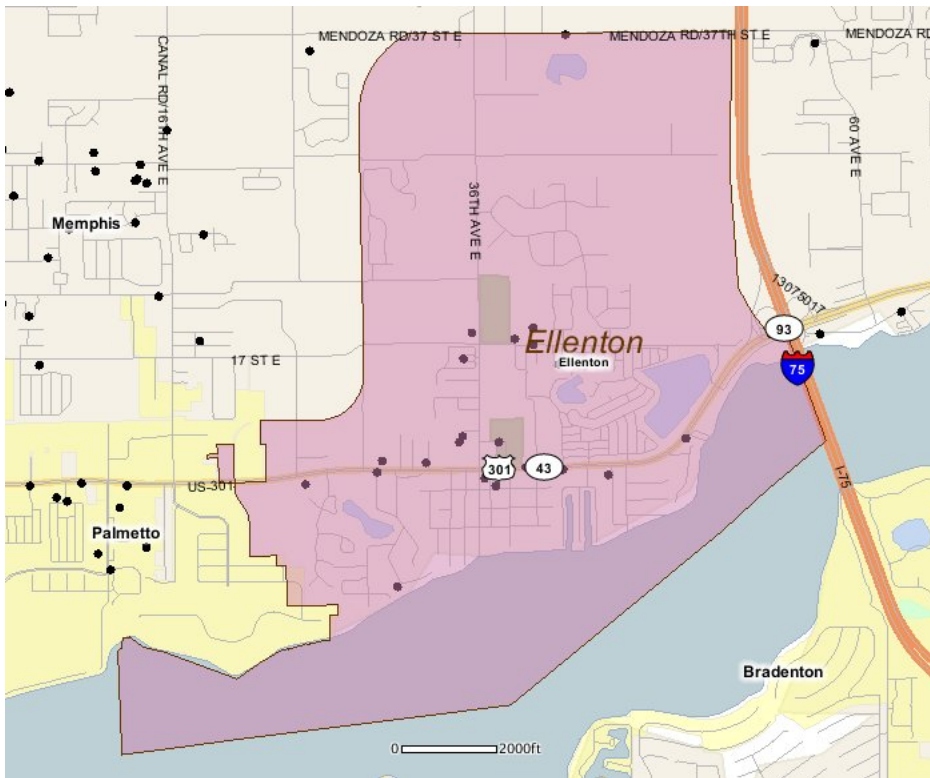
## Existing Land Use

Land Use Type	Acres	Percentage
Acreage Not Zoned For Agriculture	189	6.56%
Agricultural	486	16.88%
Centrally Assessed	0	0.00%
Industrial	126	4.38%
Institutional	47	1.63%
Mining	0	0.00%
Other	23	0.80%
Public/Semi-Public	71	2.47%
Recreation	8	0.28%
Residential	672	23.33%
Retail/Office	71	2.47%
Row	6	0.21%
Vacant Residential	153	5.31%
Vacant Nonresidential	48	1.67%
Water	<0.5	<0.02%
Parcels With No Values	24	0.83%



- Acreage Not Zoned For Agriculture
- Agricultural
- Centrally Assessed
- Industrial
- Institutional
- Mining
- Other
- Public/Semi-Public
- Recreation
- Residential
- Retail/Office
- Row
- Vacant Residential
- Vacant Nonresidential
- Water
- Parcels With No Values

## Location Maps



---

## Community Facilities

The community facilities information below is useful in a variety of ways for environmental evaluations. These community resources should be evaluated for potential sociocultural effects, such as accessibility and relocation potential. The facility types may indicate the types of population groups present in the project study area. Facility staff and leaders can be sources of community information such as who uses the facility and how it is used. Additionally, community facilities are potential public meeting venues.

### Assisted Housing (Points)

Facility Name	Address	Zip Code
ROSEWOOD MANOR	1673 40TH AVENUE CIRCLE EAST	34206
OAKS AT ELLENTON	1651 EAST 36TH AVENUE	34222

### Community Centers (Points)

Facility Name	Address	Zip Code
LIONS CLUB - ELLENTON PARRISH	3911 US HWY 301 N	34222
AMVETS POST 301	2443 US HWY 301 N	34222
VFW POST 9226 - ELLENTON	3511 12TH ST E	34222
AMERICAN LEGION POST 325	3420 US HWY 301N	34222

### Fire Stations (Points)

Facility Name	Address	Zip Code
NORTH RIVER FIRE DEPARTMENT STATION 3	3618 CEDAR ST	34222

### Florida Parks and Recreational Facilities (Points)

Facility Name	Address	Zip Code
HIGHLAND SHORES BOAT RAMP	353 SHORE DR	34222
JUDAH P. BENJAMIN CONFEDERATE MEMORIAL AT GAMBLE PLANTATION HISTORIC STATE PARK (SECONDARY ENTRANCE)	3708 PATTEN AVE	34222
JUDAH P. BENJAMIN CONFEDERATE MEMORIAL AT GAMBLE PLANTATION HISTORIC STATE PARK (MAIN ENTRANCE)	3710 N US 301	34222
BLACKBURN TENNIS COURTS	3904 E 17TH ST	34221

### Government Building

Facility Name	Address	Zip Code
MANATEE COUNTY TAX COLLECTOR	4333 US 301 N	34222

### Healthcare Facilities (Geocoded)

Facility Name	Address	Zip Code
HEALTHCARE AMERICA MEDICAL GROUP - JOSE ACOSTA MD	4015 US HWY 301 N	34222
DHADUVAI, ASHOK KUMAR MD	2901 US 301 HIGHWAY	34222
ARA PLANTATION DIALYSIS	3820 HIGHWAY 301 N	34222

### Mobile Home Parks in Florida

Facility Name	Address	Zip Code
HI-WAY AND SHORES MOBILE HOME PARK	4901 HIGHWAY 301	34222

### Public and Private Schools (Points)

Facility Name	Address	Zip Code
BLACKBURN ELEMENTARY SCHOOL	3904 17TH ST E	34221

### Religious Centers (Points)

Facility Name	Address	Zip Code
COLONY BAPTIST CHURCH	2920 US HIGHWAY 301 N	34222
PENTECOSTAL REVIVAL CENTER	3204 US HIGHWAY 301 NORTH	34222
MANATEE SOUTHERN BAPTIST ASSOCIATION	3510 17TH STREET EAST	34221
ELLENTON UNITED METHODIST CHURCH	3607 US HIGHWAY 301 NORTH	34222

## US Census Places

### Facility Name

Memphis

Ellenton

Palmetto

Bradenton

## Veteran Organizations and Facilities (Points)

### Facility Name

### Address

### Zip Code

AMERICAN LEGION POST 325

3420 US HWY 301N

34222

VFW POST 9226 - ELLENTON

3511 12TH STREET EAST

34222

AMVETS POST 301

2443 US HIGHWAY 301 NORTH

34222

---

## Block Groups

The following Census Block Groups were used to calculate demographics for this report.

### 1990 Census Block Groups

120810019046, 120810015012, 120810019045, 120810019042, 120810015024, 120810019032, 120810019044, 120810019043, 120810019041

### 2000 Census Block Groups

120810015021, 120810015011, 120810019043, 120810019041, 120810019042

### 2010 Census Block Groups

120810019043, 120810015011, 120810019041, 120810015022, 120810019042

### 2017 Census Block Groups

120810015011, 120810019043, 120810015022, 120810019041, 120810019042

---

## Data Sources

### Area

The geographic area of the community based on a user-specified community boundary or area of interest (AOI) boundary.

### Jurisdiction

Jurisdiction(s) includes local government boundaries that intersect the community or AOI boundary.

### Demographic Data

Demographic data reported under the headings General Population Trends, Race and Ethnicity Trends, Age Trends, Income Trends, Educational Attainment Trends, Language Trends, and Housing Trends is from the U.S. Decennial Census (1990, 2000) and the American Community Survey (ACS) 5-year estimates from 2006-2010 and 2013-2017. The data was gathered at the block group level for user-specified community boundaries and AOIs, and at the county level for counties. Depending on the dataset, the data represents 100% counts (Census Summary File 1) or sample-based information (Census Summary File 3 or ACS).

### About the Census Data:

User-specified community boundaries and AOIs do not always correspond precisely to block group boundaries. In these instances, adjustment of the geographic area and data for affected block groups is required to estimate the actual population. To improve the accuracy of such estimates in the SDR report, the census block group data was adjusted to exclude all census blocks with a population of two or fewer. These areas were eliminated from the corresponding years' block groups. Next, the portion of the block group that lies outside of the community or AOI boundary was removed. The demographics within each block group were then recalculated, assuming an equal area distribution of the population. Note that there may be areas where there is no population.

Use caution when comparing the 100% count data (Decennial Census) to the sample-based data (ACS). In any given year, about one in 40 or 2.5% of U.S. households will receive the ACS questionnaire. Over any five-year period, about one in eight households will receive the questionnaire, as compared to about one in six that received the long form questionnaire for the Decennial Census 2000. (Source: <http://mcdc.missouri.edu/pub/data/acs/Readme.shtml>) The U.S. Census Bureau provides help with this process:

<https://www.census.gov/programs-surveys/acs/guidance/comparing-acs-data/2017.html>

Use caution when interpreting changes in Race and Ethnicity over time. Starting with the 2000 Decennial Census, respondents were given a new option of selecting one or more race categories. Also in 2000, the placement of the question about Hispanic origin changed, helping to increase responsiveness to the Hispanic-origin question. Because of these and other changes, the 1990 data on race and ethnicity are not directly comparable with data from later censuses. (Source: <http://www.census.gov/prod/2001pubs/c2kbr01-1.pdf>; <http://www.census.gov/pred/www/rpts/Race%20and%20Ethnicity%20FINAL%20report.pdf>)

The "Minority" calculations are derived from Census and ACS data using both the race and ethnicity responses. On this report, "Minority" refers to individuals who list a race other than White and/or list their ethnicity as Hispanic/Latino. In other words, people who are multi-racial, any single race other than White, or Hispanic/Latino of any race are considered minorities.

Disability data is not included in the 2010 Decennial Census, or the 2006-2010 ACS. This data is available in the 2013-2017 ACS.

Because of changes made to the Census and ACS questions between 1990 and 2017, disability variables should not be compared from year to year. For example: 1) With the 1990 data the disabilities are listed as a "work disability" while this distinction is not made with 2000 or 2017 ACS data; 2) The 2017 ACS data includes the institutionalized population (e.g. persons in prisons and group homes), while this population is not included in 1990 or 2000; 3) the age groupings changed over the years.

Please take the following two concerns into account when viewing this data: 1) With the 1990 data the disabilities are listed as a "work disability" while this distinction is not made with 2000 or 2017 ACS data; 2) The 2017 ACS data includes the institutionalized population (e.g. persons in prisons and group homes), while this population is not included in 1990 or 2000.

The category Bachelor's Degree or Higher under the heading Educational Attainment Trends is a subset of the category High School Graduate or Higher.

Income of households. This includes the income of the householder and all other individuals 15 years old and over in the household, whether they are related to the householder or not. Because many households consist of only one person, average household income is usually less than average family income.

Income of families. In compiling statistics on family income, the incomes of all members 15 years old and over related to the householder are summed and treated as a single amount.

Age Trends median age for 1990 is not available.

### **Land Use Data**

The Land Use information Indicates acreages and percentages for the generalized land use types used to group parcel-specific, existing land use assigned by the county property appraiser office according to the Florida Department of Revenue land use codes.

### **Community Facilities Data**

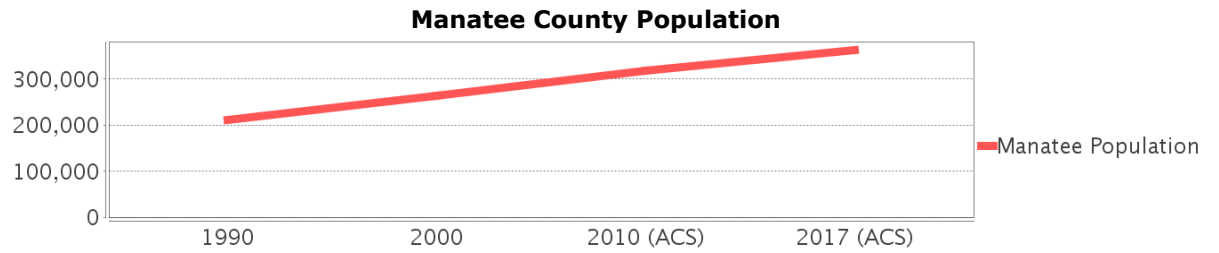
- Assisted Rental Housing Units - Identifies multifamily rental developments that receive funding assistance under federal, state, and local government programs to offer affordable housing as reported by the Shimberg Center for Housing Studies, University of Florida.
- Mobile Home Parks - Identifies approved or acknowledged mobile home parks reported by the Florida Department of Business and Professional Regulation and Florida Department of Health.
- Migrant Camps - Identifies migrant labor camp facilities inspected by the Florida Department of Health.

- Group Care Facilities - Identifies group care facilities inspected by the Florida Department of Health.
- Community Center and Fraternal Association Facilities - Identifies facilities reported by multiple sources.
- Law Enforcement Correctional Facilities - Identifies facilities reported by multiple sources.
- Cultural Centers - Identifies cultural centers including organizations, buildings, or complexes that promote culture and arts (e.g., aquariums and zoological facilities; arboreta and botanical gardens; dinner theaters; drive-ins; historical places and services; libraries; motion picture theaters; museums and art galleries; performing arts centers; performing arts theaters; planetariums; studios and art galleries; and theater producers stage facilities) reported by multiple sources.
- Fire Department and Rescue Station Facilities - Identifies facilities reported by multiple sources.
- Government Buildings - Identifies local, state, and federal government buildings reported by multiple sources.
- Health Care Facilities - Identifies health care facilities including abortion clinics, dialysis clinics, medical doctors, nursing homes, osteopaths, state laboratories/clinics, and surgicenters/walk-in clinics reported by the Florida Department of Health.
- Hospital Facilities - Identifies hospital facilities reported by multiple sources.
- Law Enforcement Facilities - Identifies law enforcement facilities reported by multiple sources.
- Parks and Recreational Facilities - Identifies parks and recreational facilities reported by multiple sources.
- Religious Center Facilities - Identifies religious centers including churches, temples, synagogues, mosques, chapels, centers, and other types of religious facilities reported by multiple sources.
- Private and Public Schools - Identifies private and public schools reported by multiple sources.
- Social Service Centers - Identifies social service centers reported by multiple sources.
- Veteran Organizations and Facilities

# Manatee County Demographic Profile

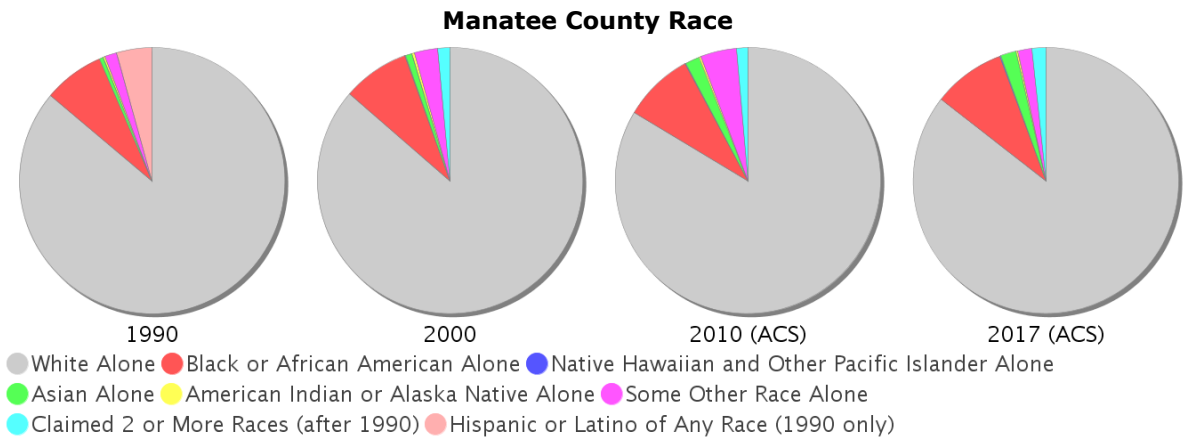
## General Population Trends - Manatee

Description	1990	2000	2010 (ACS)	2017 (ACS)
Total Population	211,707	264,002	318,619	363,542
Total Households	91,060	112,460	131,200	140,255
Average Persons per Acre	0.439	0.541	0.652	0.744
Average Persons per Household	2.325	2.294	2.00	2.56
Average Persons per Family	2.805	2.862	3.033	3.213
Males	100,147	127,294	154,353	175,761
Females	111,560	136,708	164,266	187,781



## Race and Ethnicity Trends - Manatee

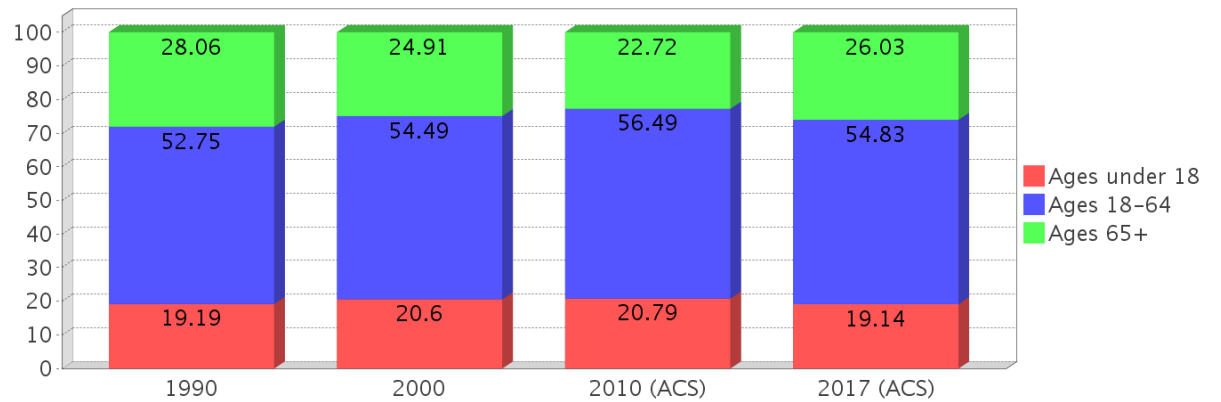
Description	1990	2000	2010 (ACS)	2017 (ACS)
White Alone	190,328 (89.90%)	227,927 (86.34%)	266,303 (83.58%)	310,738 (85.48%)
Black or African American Alone	16,400 (7.75%)	21,580 (8.17%)	27,313 (8.57%)	32,154 (8.84%)
Native Hawaiian and Other Pacific Islander Alone	(NA)	115 (0.04%)	243 (0.08%)	402 (0.11%)
Asian Alone	1,165 (0.55%)	2,237 (0.85%)	5,512 (1.73%)	7,069 (1.94%)
American Indian or Alaska Native Alone	501 (0.24%)	741 (0.28%)	745 (0.23%)	908 (0.25%)
Some Other Race Alone	3,251 (1.54%)	7,540 (2.86%)	14,095 (4.42%)	6,066 (1.67%)
Claimed 2 or More Races	(NA)	3,862 (1.46%)	4,408 (1.38%)	6,205 (1.71%)
Hispanic or Latino of Any Race	9,424 (4.45%)	24,501 (9.28%)	44,460 (13.95%)	57,651 (15.86%)
Not Hispanic or Latino	202,283 (95.55%)	239,501 (90.72%)	274,159 (86.05%)	305,891 (84.14%)
Minority	85,883 (40.57%)	51,521 (19.52%)	85,883 (26.95%)	102,277 (28.13%)



### Age Trends - Manatee

Description	1990	2000	2010 (ACS)	2017 (ACS)
Under Age 5	5.83%	5.68%	5.82%	4.96%
Ages 5-17	13.35%	14.92%	14.97%	14.18%
Ages 18-21	4.06%	3.77%	4.06%	4.02%
Ages 22-29	9.88%	8.01%	8.11%	8.17%
Ages 30-39	13.36%	12.68%	10.56%	10.12%
Ages 40-49	10.34%	13.38%	13.34%	11.49%
Ages 50-64	15.11%	16.66%	20.43%	21.02%
Age 65 and Over	28.06%	24.91%	22.72%	26.03%
-Ages 65-74	15.60%	12.50%	11.53%	14.17%
-Ages 75-84	9.72%	9.45%	8.36%	8.49%
-Age 85 and Over	2.74%	2.97%	2.83%	3.37%
Median Age	NA	44	45	48

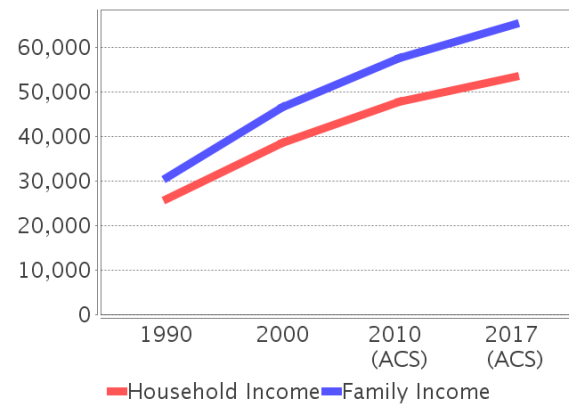
Percentage Population by Age Group - Manatee



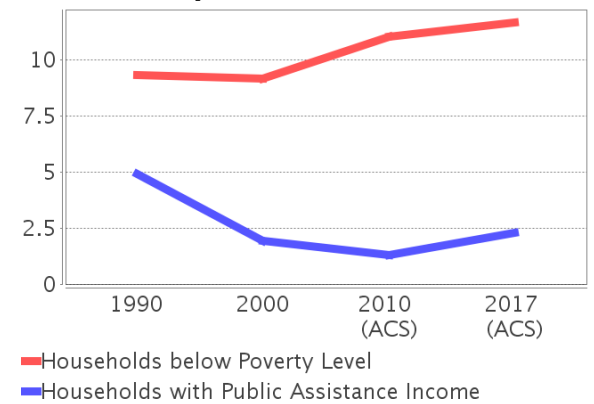
### Income Trends - Manatee

Description	1990	2000	2010 (ACS)	2017 (ACS)
Median Household Income	\$25,951	\$38,673	\$47,812	\$53,408
Median Family Income	\$30,698	\$46,576	\$57,547	\$65,250
Population below Poverty Level	10.20%	10.08%	12.77%	13.42%
Households below Poverty Level	9.31%	9.13%	11.01%	11.64%
Households with Public Assistance Income	4.90%	1.92%	1.32%	2.30%

Income Trends



Poverty and Public Assistance



### Disability Trends - Manatee

See the Data Sources section below for an explanation about the differences in disability data among the various years.

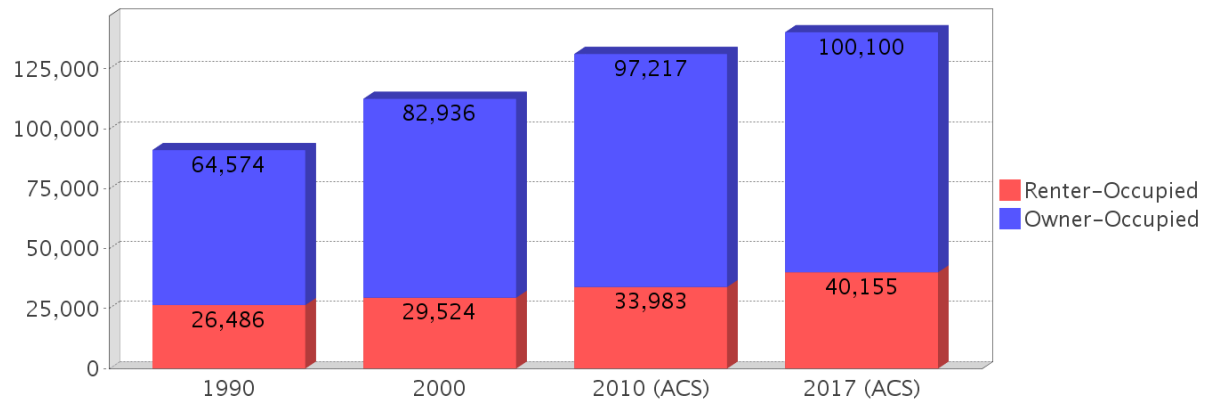
Description	1990	2000	2010 (ACS)	2017 (ACS)
Population 16 To 64 Years with a disability	10,753 (6.25%)	32,131 (13.15%)	NA (NA)	NA (NA)
Population 20 To 64 Years with a disability	NA (NA)	NA (NA)	NA (NA)	20,374 (10.67%)

## Educational Attainment Trends - Manatee

Age 25 and Over

Description	1990	2000	2010 (ACS)	2017 (ACS)
Less than 9th Grade	12,700 (8.12%)	10,847 (5.63%)	11,115 (4.83%)	11,766 (4.38%)
9th to 12th Grade, No Diploma	25,488 (16.30%)	24,930 (12.93%)	19,030 (8.28%)	18,048 (6.71%)
High School Graduate or Higher	118,189 (75.58%)	157,012 (81.44%)	199,808 (86.89%)	238,977 (88.91%)
Bachelor's Degree or Higher	24,178 (15.46%)	40,059 (20.78%)	58,929 (25.63%)	78,176 (29.08%)

## Housing Tenure - Manatee



## Language Trends - Manatee

Age 5 and Over

Description	1990	2000	2010 (ACS)	2017 (ACS)
Speaks English Well	3,288 (1.65%)	6,459 (2.59%)	10,169 (3.39%)	12,038 (3.48%)
Speaks English Not Well	NA (NA)	4,552 (1.83%)	9,106 (3.03%)	8,216 (2.38%)
Speaks English Not at All	NA (NA)	2,427 (0.97%)	3,809 (1.27%)	1,917 (0.55%)
Speaks English Not Well or Not at All	2,902 (1.46%)	6,979 (2.80%)	12,915 (4.30%)	10,133 (2.93%)

## Housing Trends - Manatee

Description	1990	2000	2010 (ACS)	2017 (ACS)
Total	115,245	138,128	170,719	183,774
Units per Acre	0.239	0.283	0.35	0.376
Single-Family Units	48,723	72,151	97,709	110,066
Multi-Family Units	24,475	37,117	43,360	43,323
Mobile Home Units	16,910	27,891	29,316	29,959
Owner-Occupied Units	64,574	82,936	97,217	100,100
Renter-Occupied Units	26,486	29,524	33,983	40,155
Vacant Units	24,185	25,668	39,519	43,519
Median Housing Value	\$79,000	\$96,000	\$214,000	\$197,200
Occupied Housing Units w/No Vehicle	6,126 (6.73%)	7,342 (6.53%)	5,974 (4.55%)	6,738 (4.80%)

---

## County Data Sources

Demographic data reported is from the U.S. Decennial Census (1990, 2000) and the American Community Survey (ACS) 5-year estimates from 2006-2010 and 2013-2017. The data was gathered at the county level. Depending on the dataset, the data represents 100% counts (Census Summary File 1) or sample-based information (Census Summary File 3 or ACS).

### About the Census Data:

Use caution when comparing the 100% count data (Decennial Census) to the sample-based data (ACS). In any given year, about one in 40 or 2.5% of U.S. households will receive the ACS questionnaire. Over any five-year period, about one in eight households will receive the questionnaire, as compared to about one in six that received the long form questionnaire for the Decennial Census 2000. (Source: <http://mcdc.missouri.edu/pub/data/acs/Readme.shtml>) The U.S. Census Bureau provides help with this process:

<https://www.census.gov/programs-surveys/acs/guidance/comparing-acs-data/2017.html>

Use caution when interpreting changes in Race and Ethnicity over time. Starting with the 2000 Decennial Census, respondents were given a new option of selecting one or more race categories. Also in 2000, the placement of the question about Hispanic origin changed, helping to increase responsiveness to the Hispanic-origin question. Because of these and other changes, the 1990 data on race and ethnicity are not directly comparable with data from later censuses. (Source: <http://www.census.gov/prod/2001pubs/c2kbr01-1.pdf>;  
<http://www.census.gov/pred/www/rpts/Race%20and%20Ethnicity%20FINAL%20report.pdf>)

The "Minority" calculations are derived from Census and ACS data using both the race and ethnicity responses. On this report, "Minority" refers to individuals who list a race other than White and/or list their ethnicity as Hispanic/Latino. In other words, people who are multi-racial, any single race other than White, or Hispanic/Latino of any race are considered minorities.

Disability data is not included in the 2010 Decennial Census, or the 2006-2010 ACS. This data is available in the 2013-2017 ACS.

Because of changes made to the Census and ACS questions between 1990 and 2017, disability variables should not be compared from year to year. For example: 1) With the 1990 data the disabilities are listed as a "work disability" while this distinction is not made with 2000 or 2017 ACS data; 2) The 2017 ACS data includes the institutionalized population (e.g. persons in prisons and group homes), while this population is not included in 1990 or 2000; 3) the age groupings changed over the years.

Please take the following two concerns into account when viewing this data: 1) With the 1990 data the disabilities are listed as a "work disability" while this distinction is not made with 2000 or 2017 ACS data; 2) The 2017 ACS data includes the institutionalized population (e.g. persons in prisons and group homes), while this population is not included in 1990 or 2000.

source:

<https://www.census.gov/people/disability/methodology/acs.html>

<https://www.census.gov/population/www/cen2000/90vs00/index.html>

The category Bachelor's Degree or Higher under the heading Educational Attainment Trends is a subset of the category High School Graduate or Higher.

---

## Metadata

- Community and Fraternal Centers [https://etdmpub.florida-et.org/metadata/gc\\_communitycenter.htm](https://etdmpub.florida-et.org/metadata/gc_communitycenter.htm)
- Correctional Facilities in Florida [https://etdmpub.florida-et.org/metadata/gc\\_correctional.htm](https://etdmpub.florida-et.org/metadata/gc_correctional.htm)
- Cultural Centers in Florida [https://etdmpub.florida-et.org/metadata/gc\\_culturecenter.htm](https://etdmpub.florida-et.org/metadata/gc_culturecenter.htm)
- Fire Department and Rescue Station Facilities in Florida [https://etdmpub.florida-et.org/metadata/gc\\_firestat.htm](https://etdmpub.florida-et.org/metadata/gc_firestat.htm)
- Local, State, and Federal Government Buildings in Florida [https://etdmpub.florida-et.org/metadata/gc\\_govbuild.htm](https://etdmpub.florida-et.org/metadata/gc_govbuild.htm)
- Florida Health Care Facilities [https://etdmpub.florida-et.org/metadata/gc\\_health.htm](https://etdmpub.florida-et.org/metadata/gc_health.htm)
- Hospital Facilities in Florida [https://etdmpub.florida-et.org/metadata/gc\\_hospitals.htm](https://etdmpub.florida-et.org/metadata/gc_hospitals.htm)
- Law Enforcement Facilities in Florida [https://etdmpub.florida-et.org/metadata/gc\\_lawenforce.htm](https://etdmpub.florida-et.org/metadata/gc_lawenforce.htm)
- Florida Parks and Recreational Facilities [https://etdmpub.florida-et.org/metadata/gc\\_parks.htm](https://etdmpub.florida-et.org/metadata/gc_parks.htm)
- Religious Centers [https://etdmpub.florida-et.org/metadata/gc\\_religion.htm](https://etdmpub.florida-et.org/metadata/gc_religion.htm)
- Florida Public and Private Schools [https://etdmpub.florida-et.org/metadata/gc\\_schools.htm](https://etdmpub.florida-et.org/metadata/gc_schools.htm)
- Social Service Centers [https://etdmpub.florida-et.org/metadata/gc\\_socialservice.htm](https://etdmpub.florida-et.org/metadata/gc_socialservice.htm)
- Assisted Rental Housing Units in Florida [https://etdmpub.florida-et.org/metadata/gc\\_assisted\\_housing.htm](https://etdmpub.florida-et.org/metadata/gc_assisted_housing.htm)
- Group Care Facilities <https://etdmpub.florida-et.org/metadata/groupcare.htm>
- Mobile Home Parks in Florida [https://etdmpub.florida-et.org/metadata/gc\\_mobilehomes.htm](https://etdmpub.florida-et.org/metadata/gc_mobilehomes.htm)
- Migrant Camps in Florida <https://etdmpub.florida-et.org/metadata/migrant.htm>
- Veteran Organizations and Facilities [https://etdmpub.florida-et.org/metadata/gc\\_veterans.htm](https://etdmpub.florida-et.org/metadata/gc_veterans.htm)
- Generalized Land Use - Florida DOT District 1 [https://etdmpub.florida-et.org/metadata/d1\\_lu\\_gen.htm](https://etdmpub.florida-et.org/metadata/d1_lu_gen.htm)
- Census Block Groups in Florida [https://etdmpub.florida-et.org/metadata/e2\\_cenacs\\_cci.htm](https://etdmpub.florida-et.org/metadata/e2_cenacs_cci.htm)
- 1990 Census Block Groups in Florida [https://etdmpub.florida-et.org/metadata/e2\\_cenblkgrp\\_1990\\_cci.htm](https://etdmpub.florida-et.org/metadata/e2_cenblkgrp_1990_cci.htm)
- 2000 Census Block Groups in Florida [https://etdmpub.florida-et.org/metadata/e2\\_cenblkgrp\\_2000\\_cci.htm](https://etdmpub.florida-et.org/metadata/e2_cenblkgrp_2000_cci.htm)
- 2010 Census Block Groups in Florida [https://etdmpub.florida-et.org/metadata/e2\\_cenblkgrp\\_2010\\_cci.htm](https://etdmpub.florida-et.org/metadata/e2_cenblkgrp_2010_cci.htm)