

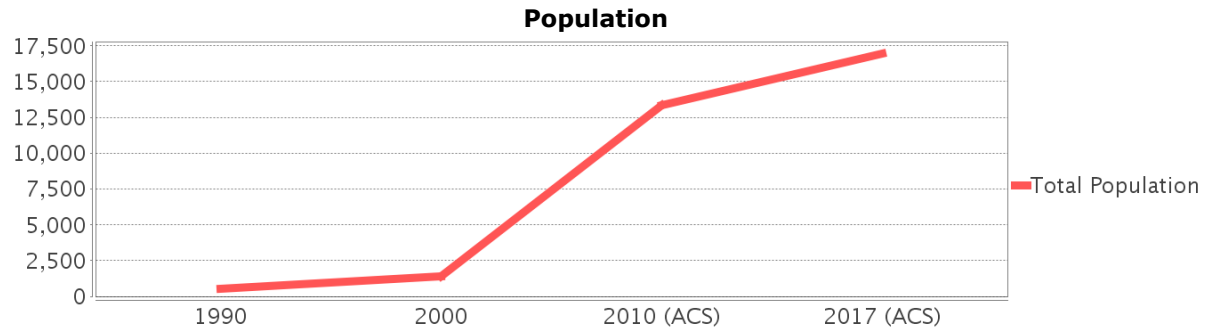
Sociocultural Data Report

Fish Hawk

Area: 16.382 square miles
Jurisdiction(s): Cities: NA
 Counties: Hillsborough

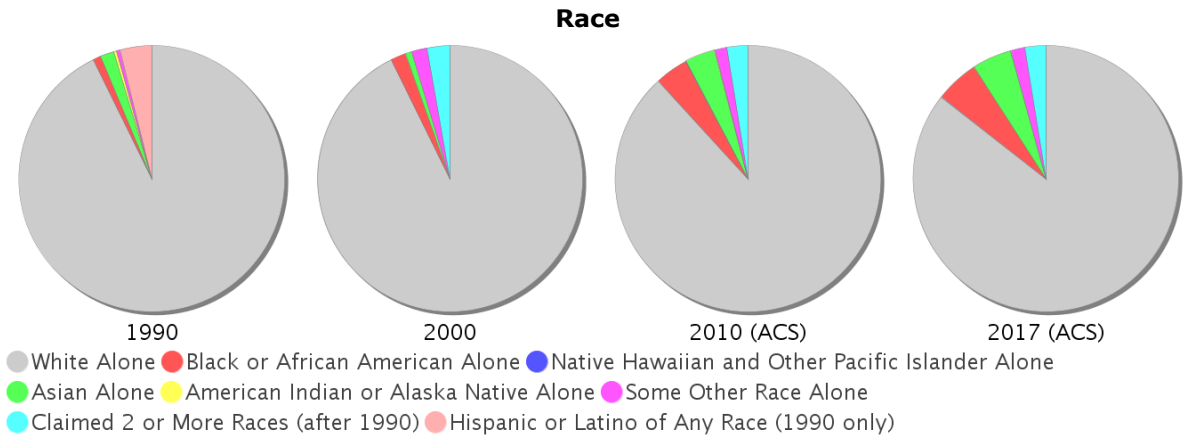
General Population Trends

Description	1990	2000	2010 (ACS)	2017 (ACS)
Total Population	516	1,408	13,321	16,944
Total Households	178	517	4,030	5,174
Average Persons per Acre	1.12	1.18	1.80	2.18
Average Persons per Household	3.06	2.97	3.10	3.18
Average Persons per Family	3.33	3.25	3.30	3.57
Males	257	702	6,515	8,406
Females	259	706	6,806	8,538

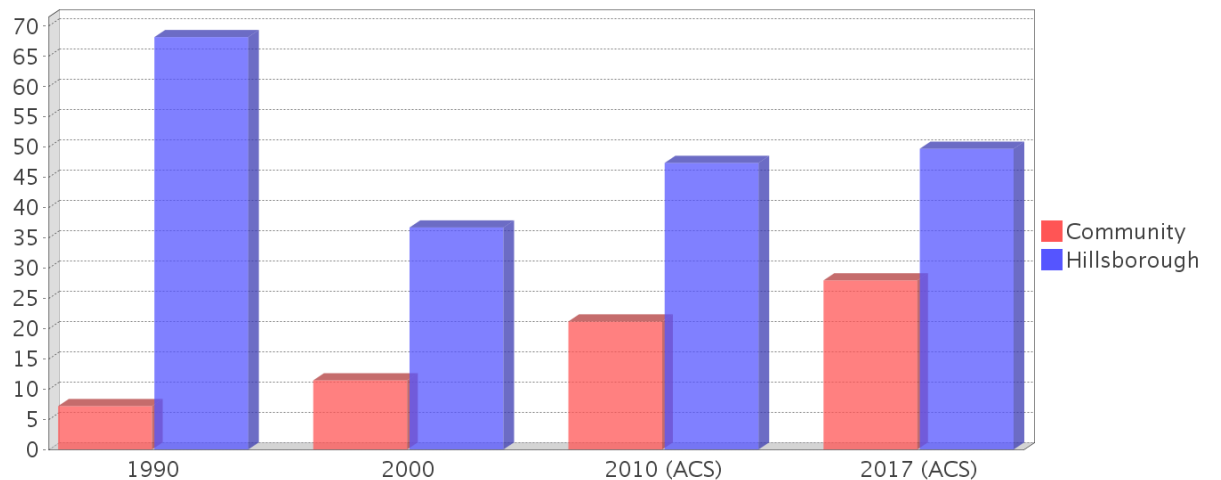


Race and Ethnicity Trends

Description	1990	2000	2010 (ACS)	2017 (ACS)
White Alone	498 (96.51%)	1,304 (92.61%)	11,748 (88.19%)	14,500 (85.58%)
Black or African American Alone	5 (0.97%)	26 (1.85%)	539 (4.05%)	896 (5.29%)
Native Hawaiian and Other Pacific Islander Alone	0 (0.00%)	0 (0.00%)	8 (0.06%)	0 (0.00%)
Asian Alone	9 (1.74%)	11 (0.78%)	478 (3.59%)	827 (4.88%)
American Indian or Alaska Native Alone	2 (0.39%)	0 (0.00%)	15 (0.11%)	0 (0.00%)
Some Other Race Alone	2 (0.39%)	27 (1.92%)	195 (1.46%)	286 (1.69%)
Claimed 2 or More Races	NA (NA)	39 (2.77%)	338 (2.54%)	435 (2.57%)
Hispanic or Latino of Any Race	21 (4.07%)	112 (7.95%)	1,539 (11.55%)	2,632 (15.53%)
Not Hispanic or Latino	495 (95.93%)	1,296 (92.05%)	11,782 (88.45%)	14,312 (84.47%)
Minority	37 (7.17%)	161 (11.43%)	2,820 (21.17%)	4,736 (27.95%)



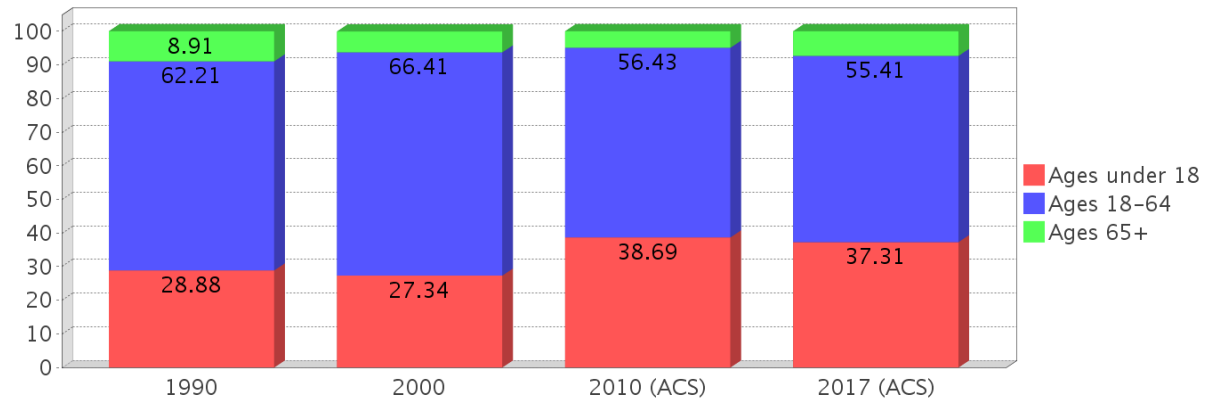
Minority Percentage Population



Age Trends

Description	1990	2000	2010 (ACS)	2017 (ACS)
Under Age 5	6.40%	6.46%	7.51%	8.11%
Ages 5-17	22.48%	20.88%	31.18%	29.19%
Ages 18-21	3.88%	2.70%	3.20%	3.07%
Ages 22-29	10.85%	8.17%	4.26%	5.23%
Ages 30-39	17.05%	18.96%	14.66%	12.10%
Ages 40-49	15.31%	18.47%	21.81%	21.24%
Ages 50-64	15.12%	18.11%	12.50%	13.76%
Age 65 and Over	8.91%	6.18%	4.88%	7.28%
-Ages 65-74	5.23%	1.35%	3.34%	4.89%
-Ages 75-84	3.29%	3.98%	1.21%	1.66%
-Age 85 and Over	0.39%	0.85%	0.33%	0.73%
Median Age	NA	35	35	36

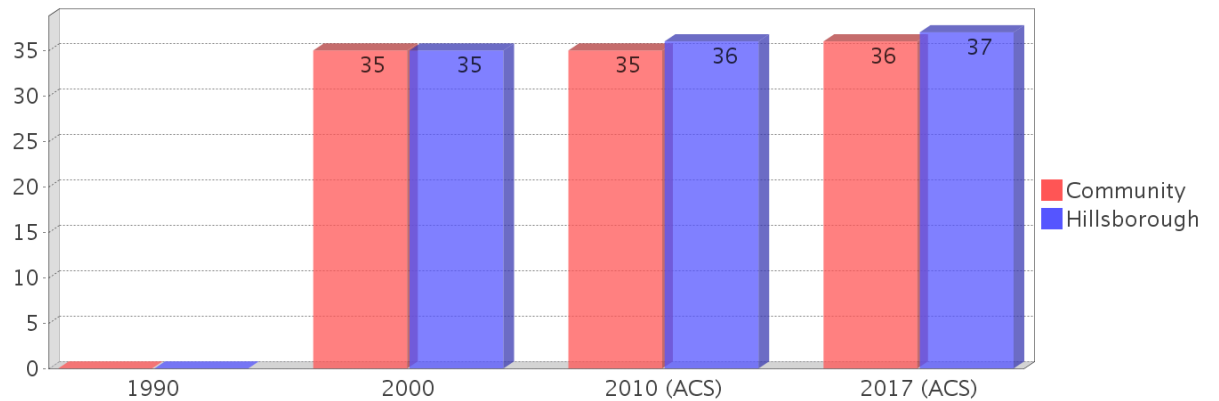
Percentage Population by Age Group



Income Trends

Description	1990	2000	2010 (ACS)	2017 (ACS)
Median Household Income	\$38,281	\$60,082	\$83,528	\$84,291
Median Family Income	\$37,697	\$63,375	\$79,453	\$101,069
Population below Poverty Level	10.47%	5.18%	2.13%	5.99%
Households below Poverty Level	11.24%	5.61%	1.24%	6.30%
Households with Public Assistance Income	3.37%	0.19%	0.00%	0.87%

Median Age Comparison

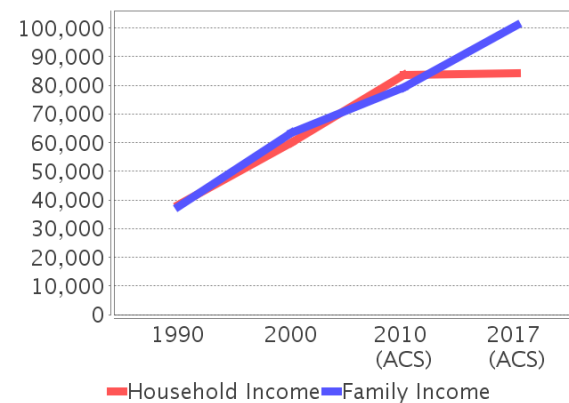


Disability Trends

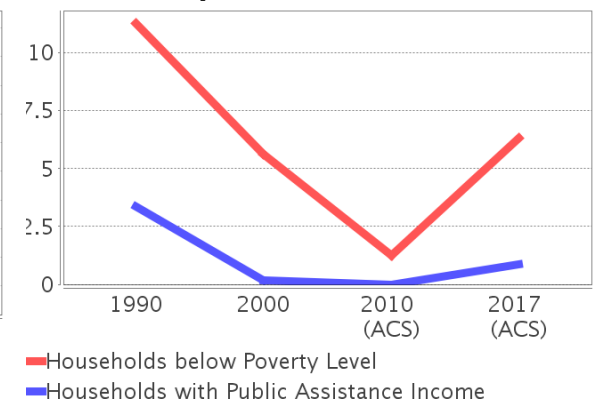
See the Data Sources section below for an explanation about the differences in disability data among the various years.

Description	1990	2000	2010 (ACS)	2017 (ACS)
Population 16 To 64 Years with a disability	27 (6.65%)	110 (8.41%)	(NA)	(NA)
Population 20 To 64 Years with a disability	(NA)	(NA)	(NA)	380 (4.20%)

Income Trends



Poverty and Public Assistance



Educational Attainment Trends

Age 25 and Over

Description	1990	2000	2010 (ACS)	2017 (ACS)
Less than 9th Grade	35 (10.32%)	22 (2.30%)	122 (1.79%)	121 (1.24%)
9th to 12th Grade, No Diploma	69 (20.35%)	105 (10.99%)	53 (0.78%)	78 (0.80%)
High School Graduate or Higher	235 (69.32%)	828 (86.70%)	6,653 (97.45%)	9,555 (97.96%)
Bachelor's Degree or Higher	76 (22.42%)	270 (28.27%)	3,647 (53.42%)	5,943 (60.93%)

Language Trends

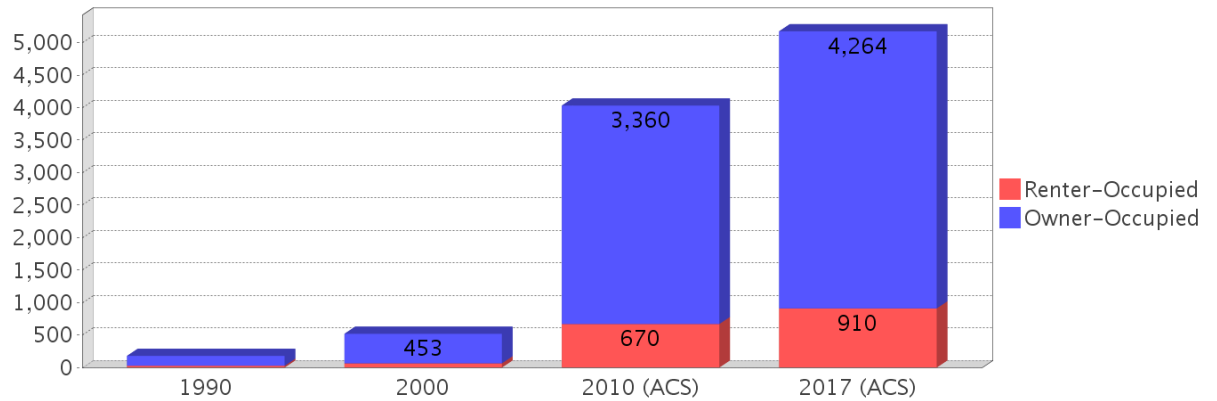
Age 5 and Over

Description	1990	2000	2010 (ACS)	2017 (ACS)
Speaks English Well	67 (12.74%)	18 (1.37%)	122 (1.10%)	254 (1.63%)
Speaks English Not Well	NA (NA)	11 (0.84%)	56 (0.50%)	133 (0.85%)
Speaks English Not at All	NA (NA)	0 (0.00%)	18 (0.16%)	57 (0.37%)
Speaks English Not Well or Not at All	3 (0.57%)	11 (0.84%)	74 (0.66%)	190 (1.22%)

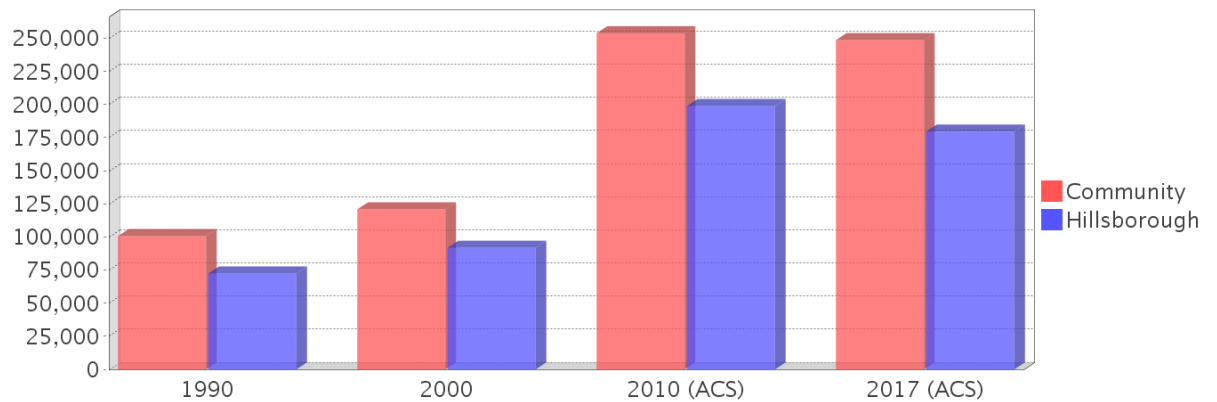
Housing Trends

Description	1990	2000	2010 (ACS)	2017 (ACS)
Total	202	603	4,318	5,623
Units per Acre	0.02	0.07	0.54	0.71
Single-Family Units	106	467	3,854	5,162
Multi-Family Units	1	0	118	204
Mobile Home Units	70	137	244	257
Owner-Occupied Units	151	453	3,360	4,264
Renter-Occupied Units	27	64	670	910
Vacant Units	24	86	287	449
Median Housing Value	\$100,600	\$120,800	\$253,800	\$248,550
Occupied Housing Units w/No Vehicle	5 (2.81%)	25 (4.84%)	13 (0.32%)	110 (2.13%)

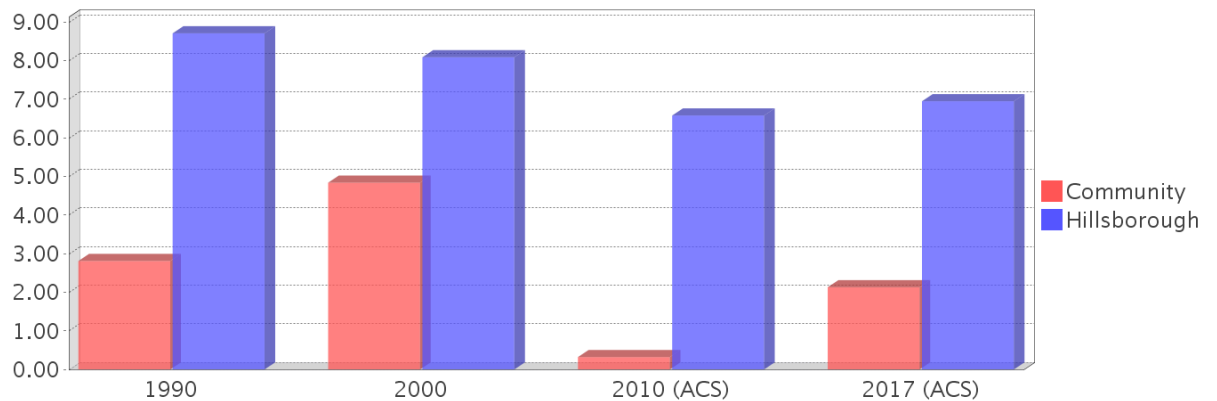
Housing Tenure



Median Housing Value Comparison

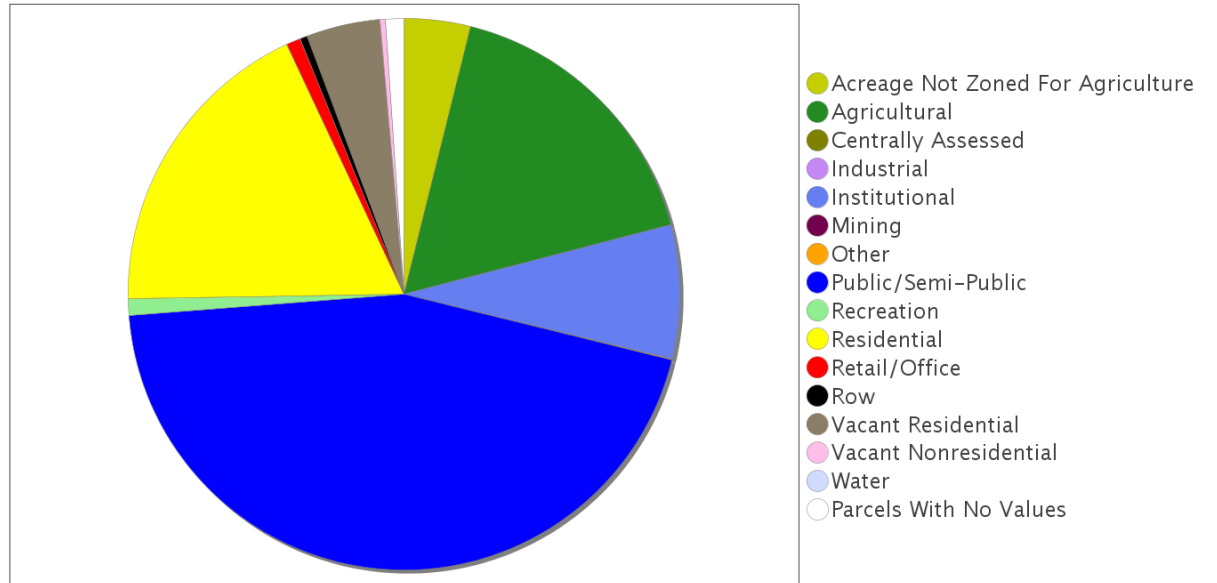


Occupied Units With No Vehicles Available

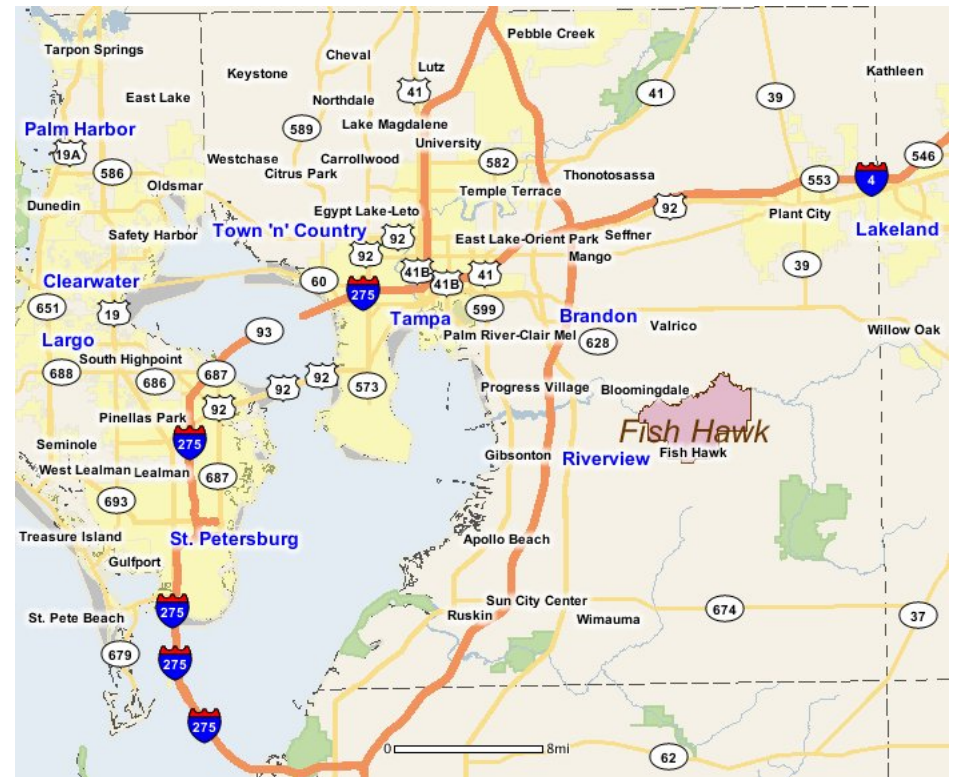
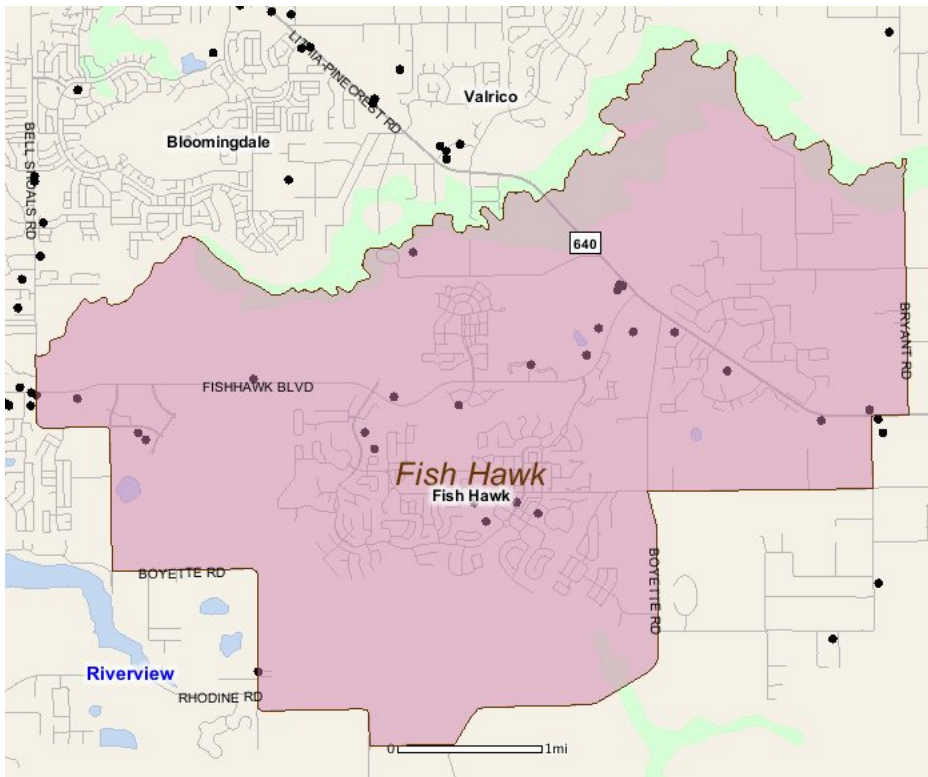


Existing Land Use

Land Use Type	Acres	Percentage
Acreage Not Zoned For Agriculture	390	3.72%
Agricultural	1,707	16.28%
Centrally Assessed	0	0.00%
Industrial	3	0.03%
Institutional	783	7.47%
Mining	0	0.00%
Other	6	0.06%
Public/Semi-Public	4,499	42.91%
Recreation	96	0.92%
Residential	1,834	17.49%
Retail/Office	84	0.80%
Row	43	0.41%
Vacant Residential	430	4.10%
Vacant Nonresidential	33	0.31%
Water	0	0.00%
Parcels With No Values	108	1.03%



Location Maps



Community Facilities

The community facilities information below is useful in a variety of ways for environmental evaluations. These community resources should be evaluated for potential sociocultural effects, such as accessibility and relocation potential. The facility types may indicate the types of population groups present in the project study area. Facility staff and leaders can be sources of community information such as who uses the facility and how it is used. Additionally, community facilities are potential public meeting venues.

Community Boundaries (User defined)

Facility Name

Riverview

SouthShore

Brandon

Fire Stations (Points)

Facility Name

Address

Zip Code

HILLSBOROUGH COUNTY FIRE DEPARTMENT
STATION 44 (FISHHAWK) (PROPOSED)

13601 FISHHAWK BLVD

33547

Florida Parks and Recreational Facilities (Points)

Facility Name

Address

Zip Code

OSPREY RIDGE PARK

572X OSPREY RIDGE DR

33547

FISH HAWK CREEK PRESERVE TRAILHEAD

13670 FISHHAWK BLVD

33547

HAWK PARK

5702 HAWK PARK BLVD

33547

KESTREL PARK

512X OSPREY PARK DR

33547

LITHIA SPRINGS CONSERVATION PARK

3932 LITHIA SPRINGS RD

33547

FISH HAWK RANCH

16234 FISH HAWK BLVD

33547

Healthcare Facilities (Geocoded)

Facility Name

Address

Zip Code

URGENT CARE USA FISHHAWK LLC

5464 LITHIA PINECREST ROAD

33547

FAMILY MEDICAL SPECIALISTS OF FLORIDA

16144 CHURCHVIEW DRIVE 109

33547

WOMEN'S CARE FLORIDA

5470 LITHIA PINECREST ROAD

33547

PEDIATRIC HEALTH CARE ALLIANCE, PA
(BLOOMINGDALE)

5454 LITHIA PINECREST ROAD

33547

PREMIER CARE PEDIATRICS

16637 FISHHAWK BOULEVARD, SUITE 101

33547

Public and Private Schools (Points)

Facility Name

Address

Zip Code

STOWERS ELEMENTARY SCHOOL

13915 BARRINGTON STOWERS DRIVE

33547

BEVIS ELEMENTARY SCHOOL

5720 OSPREY RIDGE DRIVE

33547

BARRINGTON MIDDLE SCHOOL

13915 BARRINGTON STOWERS DRIVE

33547

RANDALL MIDDLE SCHOOL

16510 FISHHAWK BOULEVARD

33547

NEWSOME HIGH SCHOOL

16550 FISHHAWK BOULEVARD

33547

FISHHAWK CREEK ELEMENTARY SCHOOL

16815 DORMAN ROAD

33547

Religious Centers (Points)

Facility Name

Address

Zip Code

SUNSET BAY CHAPEL

6026 CHURCHSIDE DRIVE

33547

UNITED FAMILY FELLOWSHIP

6627 LITHIA PINECREST ROAD

33547

LIFE CHURCH AT FISH HAWK

6420 LITHIA PINECREST ROAD

33547

GRACE COMMUNITY UMC-FISHHAWK

5708 LITHIA PINECREST ROAD

33547

ELL EL MINISTRIES

5842 FISHHAWK RIDGE DRIVE

33547

FISHHAWK FELLOWSHIP

15326 FISHHAWK BLVD

33547

US Census Places

Facility Name

Bloomingtondale

Fish Hawk

Facility Name

Riverview

Valrico

Block Groups

The following Census Block Groups were used to calculate demographics for this report.

1990 Census Block Groups

120570139055, 120570139056, 120570132023, 120570134023, 120570134031, 120570139053, 120570131001, 120570139054, 120570134032, 120570134013

2000 Census Block Groups

120570134053, 120570132073, 120570134094, 120570132083, 120570134074, 120570132072, 120570131001, 120570139111, 120570134093, 120570139112, 120570139101, 120570139102, 120570139122, 120570134087

2010 Census Block Groups

120570139181, 120570139221, 120570134131, 120570139202, 120570139231, 120570139193, 120570139201, 120570139211, 120570131001, 120570139122

2017 Census Block Groups

120570139201, 120570139221, 120570139202, 120570139231, 120570134131, 120570139193, 120570139211, 120570131001, 120570139181, 120570139122

Data Sources

Area

The geographic area of the community based on a user-specified community boundary or area of interest (AOI) boundary.

Jurisdiction

Jurisdiction(s) includes local government boundaries that intersect the community or AOI boundary.

Demographic Data

Demographic data reported under the headings General Population Trends, Race and Ethnicity Trends, Age Trends, Income Trends, Educational Attainment Trends, Language Trends, and Housing Trends is from the U.S. Decennial Census (1990, 2000) and the American Community Survey (ACS) 5-year estimates from 2006-2010 and 2013-2017. The data was gathered at the block group level for user-specified community boundaries and AOIs, and at the county level for counties. Depending on the dataset, the data represents 100% counts (Census Summary File 1) or sample-based information (Census Summary File 3 or ACS).

About the Census Data:

User-specified community boundaries and AOIs do not always correspond precisely to block group boundaries. In these instances, adjustment of the geographic area and data for affected block groups is required to estimate the actual population. To improve the accuracy of such estimates in the SDR report, the census block group data was adjusted to exclude all census blocks with a population of two or fewer. These areas were eliminated from the corresponding years' block groups. Next, the portion of the block group that lies outside of the community or AOI boundary was removed. The demographics within each block group were then recalculated, assuming an equal area distribution of the population. Note that there may be areas where there is no population.

Use caution when comparing the 100% count data (Decennial Census) to the sample-based data (ACS). In any given year, about one in 40 or 2.5% of U.S. households will receive the ACS questionnaire. Over any five-year period, about

one in eight households will receive the questionnaire, as compared to about one in six that received the long form questionnaire for the Decennial Census 2000. (Source: <http://mcdc.missouri.edu/pub/data/acs/Readme.shtml>) The U.S. Census Bureau provides help with this process:

<https://www.census.gov/programs-surveys/acs/guidance/comparing-acs-data/2017.html>

Use caution when interpreting changes in Race and Ethnicity over time. Starting with the 2000 Decennial Census, respondents were given a new option of selecting one or more race categories. Also in 2000, the placement of the question about Hispanic origin changed, helping to increase responsiveness to the Hispanic-origin question. Because of these and other changes, the 1990 data on race and ethnicity are not directly comparable with data from later censuses. (Source: <http://www.census.gov/prod/2001pubs/c2kbr01-1.pdf>; <http://www.census.gov/pred/www/rpts/Race%20and%20Ethnicity%20FINAL%20report.pdf>)

The "Minority" calculations are derived from Census and ACS data using both the race and ethnicity responses. On this report, "Minority" refers to individuals who list a race other than White and/or list their ethnicity as Hispanic/Latino. In other words, people who are multi-racial, any single race other than White, or Hispanic/Latino of any race are considered minorities.

Disability data is not included in the 2010 Decennial Census, or the 2006-2010 ACS. This data is available in the 2013-2017 ACS.

Because of changes made to the Census and ACS questions between 1990 and 2017, disability variables should not be compared from year to year. For example: 1) With the 1990 data the disabilities are listed as a "work disability" while this distinction is not made with 2000 or 2017 ACS data; 2) The 2017 ACS data includes the institutionalized population (e.g. persons in prisons and group homes), while this population is not included in 1990 or 2000; 3) the age groupings changed over the years.

Please take the following two concerns into account when viewing this data: 1) With the 1990 data the disabilities are listed as a "work disability" while this distinction is not made with 2000 or 2017 ACS data; 2) The 2017 ACS data includes the institutionalized population (e.g. persons in prisons and group homes), while this population is not included in 1990 or 2000.

The category Bachelor's Degree or Higher under the heading Educational Attainment Trends is a subset of the category High School Graduate or Higher.

Income of households. This includes the income of the householder and all other individuals 15 years old and over in the household, whether they are related to the householder or not. Because many households consist of only one person, average household income is usually less than average family income.

Income of families. In compiling statistics on family income, the incomes of all members 15 years old and over related to the householder are summed and treated as a single amount.

Age Trends median age for 1990 is not available.

Land Use Data

The Land Use information Indicates acreages and percentages for the generalized land use types used to group parcel-specific, existing land use assigned by the county property appraiser office according to the Florida Department of Revenue land use codes.

Community Facilities Data

- Assisted Rental Housing Units - Identifies multifamily rental developments that receive funding assistance under federal, state, and local government programs to offer affordable housing as reported by the Shimberg Center for Housing Studies, University of Florida.

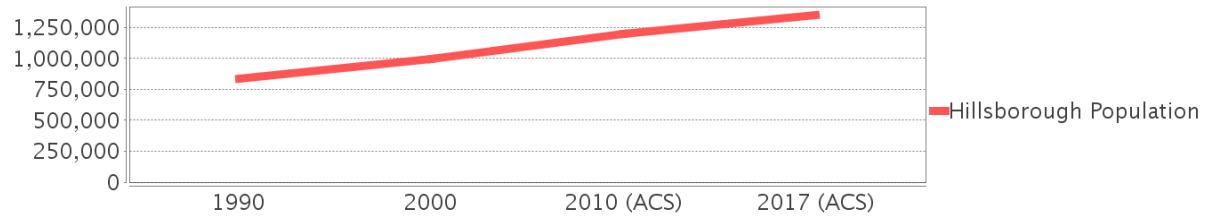
- Mobile Home Parks - Identifies approved or acknowledged mobile home parks reported by the Florida Department of Business and Professional Regulation and Florida Department of Health.
- Migrant Camps - Identifies migrant labor camp facilities inspected by the Florida Department of Health.
- Group Care Facilities - Identifies group care facilities inspected by the Florida Department of Health.
- Community Center and Fraternal Association Facilities - Identifies facilities reported by multiple sources.
- Law Enforcement Correctional Facilities - Identifies facilities reported by multiple sources.
- Cultural Centers - Identifies cultural centers including organizations, buildings, or complexes that promote culture and arts (e.g., aquariums and zoological facilities; arboreta and botanical gardens; dinner theaters; drive-ins; historical places and services; libraries; motion picture theaters; museums and art galleries; performing arts centers; performing arts theaters; planetariums; studios and art galleries; and theater producers stage facilities) reported by multiple sources.
- Fire Department and Rescue Station Facilities - Identifies facilities reported by multiple sources.
- Government Buildings - Identifies local, state, and federal government buildings reported by multiple sources.
- Health Care Facilities - Identifies health care facilities including abortion clinics, dialysis clinics, medical doctors, nursing homes, osteopaths, state laboratories/clinics, and surgicenters/walk-in clinics reported by the Florida Department of Health.
- Hospital Facilities - Identifies hospital facilities reported by multiple sources.
- Law Enforcement Facilities - Identifies law enforcement facilities reported by multiple sources.
- Parks and Recreational Facilities - Identifies parks and recreational facilities reported by multiple sources.
- Religious Center Facilities - Identifies religious centers including churches, temples, synagogues, mosques, chapels, centers, and other types of religious facilities reported by multiple sources.
- Private and Public Schools - Identifies private and public schools reported by multiple sources.
- Social Service Centers - Identifies social service centers reported by multiple sources.
- Veteran Organizations and Facilities

Hillsborough County Demographic Profile

General Population Trends - Hillsborough

Description	1990	2000	2010 (ACS)	2017 (ACS)
Total Population	834,054	998,948	1,200,236	1,351,087
Total Households	324,872	391,357	462,447	505,845
Average Persons per Acre	1.216	1.458	1.751	1.97
Average Persons per Household	2.567	2.508	3.00	2.63
Average Persons per Family	3.106	3.156	3.262	3.371
Males	406,217	488,596	585,512	658,639
Females	427,837	510,352	614,724	692,448

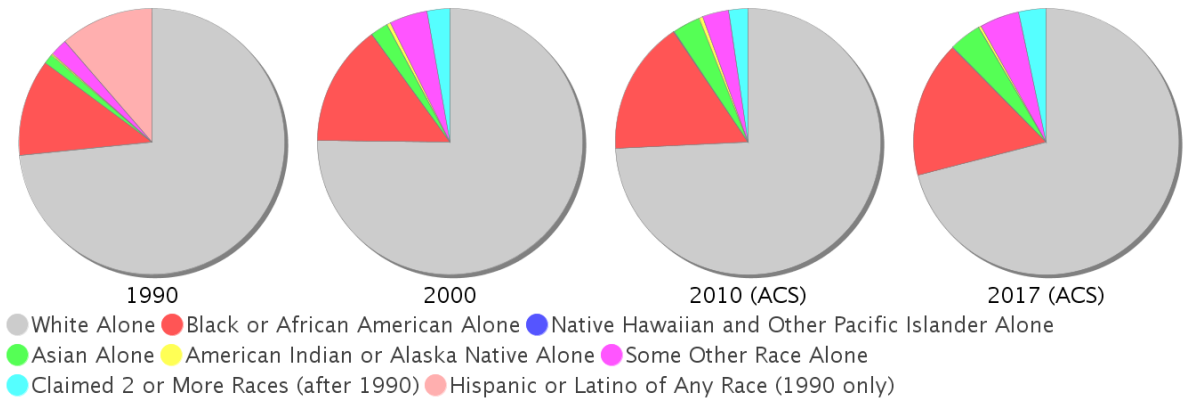
Hillsborough County Population



Race and Ethnicity Trends - Hillsborough

Description	1990	2000	2010 (ACS)	2017 (ACS)
White Alone	690,352 (82.77%)	750,497 (75.13%)	890,392 (74.18%)	958,208 (70.92%)
Black or African American Alone	110,283 (13.22%)	147,966 (14.81%)	196,352 (16.36%)	224,284 (16.60%)
Native Hawaiian and Other Pacific Islander Alone	(NA)	540 (0.05%)	773 (0.06%)	918 (0.07%)
Asian Alone	11,093 (1.33%)	21,571 (2.16%)	40,285 (3.36%)	53,446 (3.96%)
American Indian or Alaska Native Alone	2,454 (0.29%)	4,175 (0.42%)	5,523 (0.46%)	4,080 (0.30%)
Some Other Race Alone	19,586 (2.35%)	46,587 (4.66%)	39,276 (3.27%)	65,344 (4.84%)
Claimed 2 or More Races	(NA)	27,612 (2.76%)	27,635 (2.30%)	44,807 (3.32%)
Hispanic or Latino of Any Race	106,908 (12.82%)	179,637 (17.98%)	286,394 (23.86%)	370,827 (27.45%)
Not Hispanic or Latino	727,146 (87.18%)	819,311 (82.02%)	913,842 (76.14%)	980,260 (72.55%)
Minority	568,661 (68.18%)	366,644 (36.70%)	568,661 (47.38%)	671,746 (49.72%)

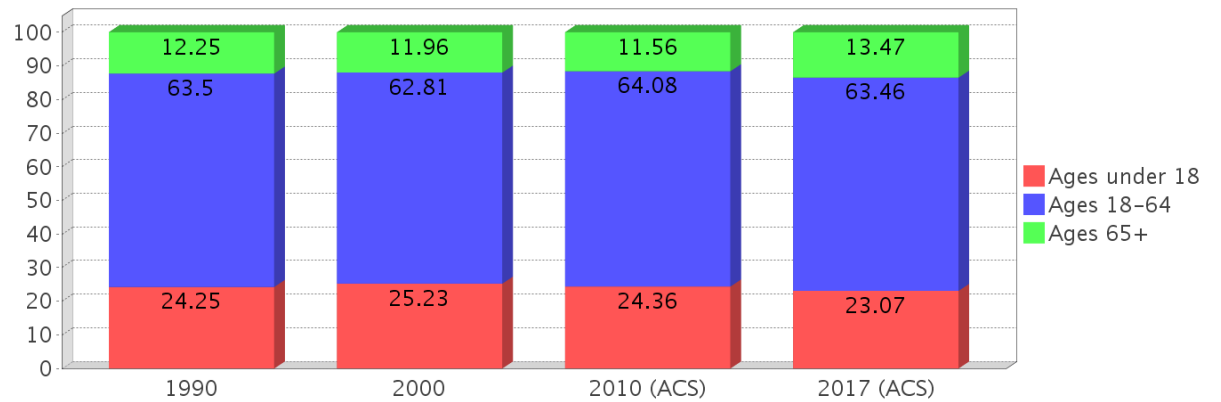
Hillsborough County Race



Age Trends - Hillsborough

Description	1990	2000	2010 (ACS)	2017 (ACS)
Under Age 5	7.30%	6.77%	6.70%	6.36%
Ages 5-17	16.95%	18.46%	17.66%	16.71%
Ages 18-21	5.96%	5.33%	5.91%	5.38%
Ages 22-29	14.20%	11.31%	11.83%	11.77%
Ages 30-39	17.39%	16.38%	13.93%	13.95%
Ages 40-49	12.95%	15.22%	15.18%	13.65%
Ages 50-64	13.00%	14.57%	17.23%	18.70%
Age 65 and Over	12.25%	11.96%	11.56%	13.47%
-Ages 65-74	7.41%	6.46%	6.21%	7.97%
-Ages 75-84	3.83%	4.20%	3.87%	3.88%
-Age 85 and Over	1.00%	1.29%	1.48%	1.62%
Median Age	NA	35	36	37

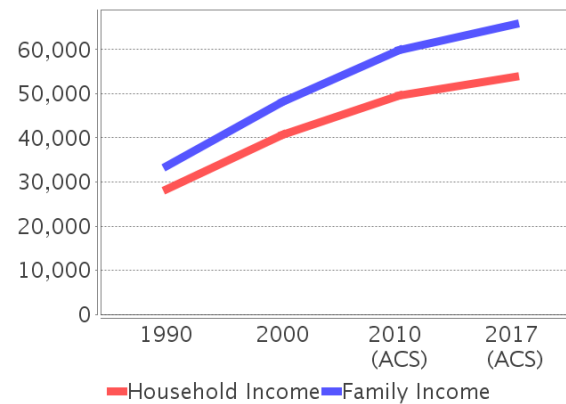
Percentage Population by Age Group - Hillsborough



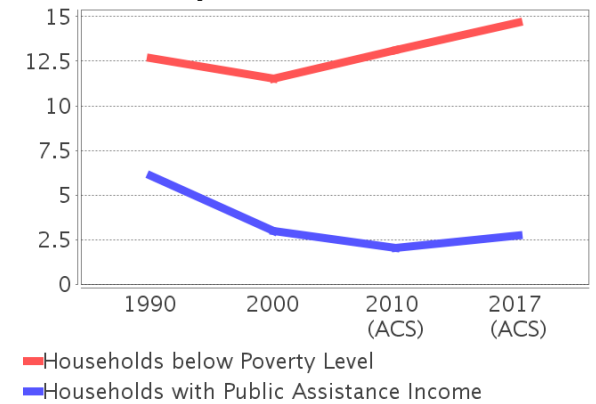
Income Trends - Hillsborough

Description	1990	2000	2010 (ACS)	2017 (ACS)
Median Household Income	\$28,477	\$40,663	\$49,536	\$53,742
Median Family Income	\$33,645	\$48,223	\$59,886	\$65,730
Population below Poverty Level	13.29%	12.51%	14.17%	15.65%
Households below Poverty Level	12.66%	11.50%	13.11%	14.66%
Households with Public Assistance Income	6.07%	3.01%	2.06%	2.72%

Income Trends



Poverty and Public Assistance



Disability Trends - Hillsborough

See the Data Sources section below for an explanation about the differences in disability data among the various years.

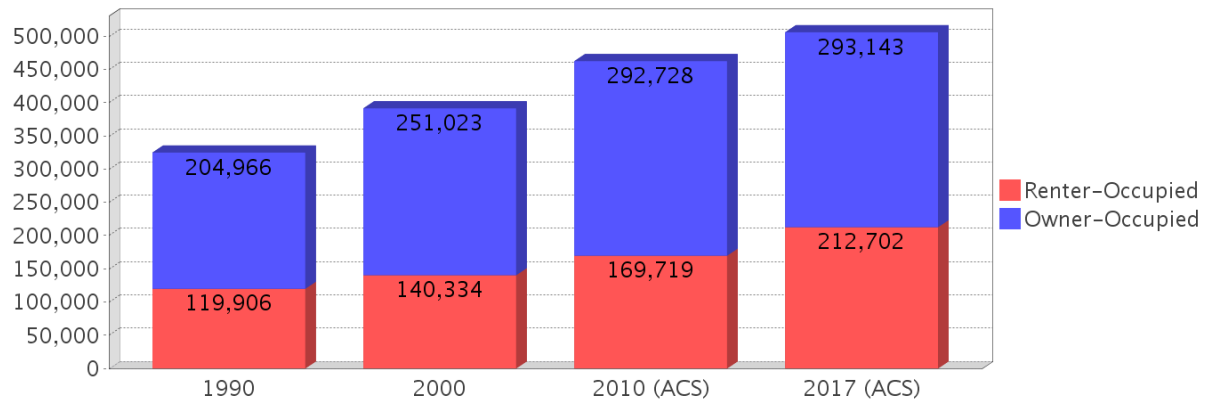
Description	1990	2000	2010 (ACS)	2017 (ACS)
Population 16 To 64 Years with a disability	48,345 (7.57%)	136,465 (14.85%)	NA (NA)	NA (NA)
Population 20 To 64 Years with a disability	NA (NA)	NA (NA)	NA (NA)	78,578 (9.62%)

Educational Attainment Trends - Hillsborough

Age 25 and Over

Description	1990	2000	2010 (ACS)	2017 (ACS)
Less than 9th Grade	48,247 (8.85%)	41,209 (6.30%)	41,965 (5.35%)	44,103 (4.83%)
9th to 12th Grade, No Diploma	84,751 (15.55%)	84,574 (12.93%)	69,127 (8.82%)	64,010 (7.01%)
High School Graduate or Higher	412,022 (75.60%)	528,058 (80.76%)	672,988 (85.83%)	804,475 (88.15%)
Bachelor's Degree or Higher	110,070 (20.20%)	164,109 (25.10%)	226,113 (28.84%)	291,612 (31.95%)

Housing Tenure - Hillsborough



Language Trends - Hillsborough

Age 5 and Over

Description	1990	2000	2010 (ACS)	2017 (ACS)
Speaks English Well	23,611 (3.05%)	39,227 (4.21%)	54,355 (4.85%)	57,301 (4.53%)
Speaks English Not Well	NA	28,250 (3.03%)	39,803 (3.55%)	47,194 (3.73%)
Speaks English Not at All	NA	13,819 (1.48%)	19,950 (1.78%)	29,235 (2.31%)
Speaks English Not Well or Not at All	20,956 (2.71%)	42,069 (4.52%)	59,753 (5.34%)	76,429 (6.04%)

Housing Trends - Hillsborough

Description	1990	2000	2010 (ACS)	2017 (ACS)
Total	367,740	425,962	526,016	563,638
Units per Acre	0.536	0.622	0.768	0.822
Single-Family Units	200,373	260,157	330,155	355,778
Multi-Family Units	87,418	122,837	153,087	166,885
Mobile Home Units	34,499	42,063	42,158	39,915
Owner-Occupied Units	204,966	251,023	292,728	293,143
Renter-Occupied Units	119,906	140,334	169,719	212,702
Vacant Units	42,868	34,605	63,569	57,793
Median Housing Value	\$72,400	\$91,800	\$198,900	\$179,500
Occupied Housing Units w/No Vehicle	28,289 (8.71%)	31,680 (8.09%)	30,440 (6.58%)	35,133 (6.95%)

County Data Sources

Demographic data reported is from the U.S. Decennial Census (1990, 2000) and the American Community Survey (ACS) 5-year estimates from 2006-2010 and 2013-2017. The data was gathered at the county level. Depending on the dataset, the data represents 100% counts (Census Summary File 1) or sample-based information (Census Summary File 3 or ACS).

About the Census Data:

Use caution when comparing the 100% count data (Decennial Census) to the sample-based data (ACS). In any given year, about one in 40 or 2.5% of U.S. households will receive the ACS questionnaire. Over any five-year period, about one in eight households will receive the questionnaire, as compared to about one in six that received the long form questionnaire for the Decennial Census 2000. (Source: <http://mcdc.missouri.edu/pub/data/acs/Readme.shtml>) The U.S. Census Bureau provides help with this process:

<https://www.census.gov/programs-surveys/acs/guidance/comparing-acs-data/2017.html>

Use caution when interpreting changes in Race and Ethnicity over time. Starting with the 2000 Decennial Census, respondents were given a new option of selecting one or more race categories. Also in 2000, the placement of the question about Hispanic origin changed, helping to increase responsiveness to the Hispanic-origin question. Because of these and other changes, the 1990 data on race and ethnicity are not directly comparable with data from later censuses. (Source: <http://www.census.gov/prod/2001pubs/c2kbr01-1.pdf>; <http://www.census.gov/pred/www/rpts/Race%20and%20Ethnicity%20FINAL%20report.pdf>)

The "Minority" calculations are derived from Census and ACS data using both the race and ethnicity responses. On this report, "Minority" refers to individuals who list a race other than White and/or list their ethnicity as Hispanic/Latino. In other words, people who are multi-racial, any single race other than White, or Hispanic/Latino of any race are considered minorities.

Disability data is not included in the 2010 Decennial Census, or the 2006-2010 ACS. This data is available in the 2013-2017 ACS.

Because of changes made to the Census and ACS questions between 1990 and 2017, disability variables should not be compared from year to year. For example: 1) With the 1990 data the disabilities are listed as a "work disability" while this distinction is not made with 2000 or 2017 ACS data; 2) The 2017 ACS data includes the institutionalized population (e.g. persons in prisons and group homes), while this population is not included in 1990 or 2000; 3) the age groupings changed over the years.

Please take the following two concerns into account when viewing this data: 1) With the 1990 data the disabilities are listed as a "work disability" while this distinction is not made with 2000 or 2017 ACS data; 2) The 2017 ACS data includes the institutionalized population (e.g. persons in prisons and group homes), while this population is not included in 1990 or 2000.

source:

<https://www.census.gov/people/disability/methodology/acs.html>

<https://www.census.gov/population/www/cen2000/90vs00/index.html>

The category Bachelor's Degree or Higher under the heading Educational Attainment Trends is a subset of the category High School Graduate or Higher.

Metadata

- Community and Fraternal Centers https://etdmpub.florida-et.org/metadata/gc_communitycenter.htm
- Correctional Facilities in Florida https://etdmpub.florida-et.org/metadata/gc_correctional.htm
- Cultural Centers in Florida https://etdmpub.florida-et.org/metadata/gc_culturecenter.htm
- Fire Department and Rescue Station Facilities in Florida https://etdmpub.florida-et.org/metadata/gc_firestat.htm
- Local, State, and Federal Government Buildings in Florida https://etdmpub.florida-et.org/metadata/gc_govbuild.htm
- Florida Health Care Facilities https://etdmpub.florida-et.org/metadata/gc_health.htm
- Hospital Facilities in Florida https://etdmpub.florida-et.org/metadata/gc_hospitals.htm
- Law Enforcement Facilities in Florida https://etdmpub.florida-et.org/metadata/gc_lawenforce.htm
- Florida Parks and Recreational Facilities https://etdmpub.florida-et.org/metadata/gc_parks.htm
- Religious Centers https://etdmpub.florida-et.org/metadata/gc_religion.htm
- Florida Public and Private Schools https://etdmpub.florida-et.org/metadata/gc_schools.htm
- Social Service Centers https://etdmpub.florida-et.org/metadata/gc_socialservice.htm
- Assisted Rental Housing Units in Florida https://etdmpub.florida-et.org/metadata/gc_assisted_housing.htm
- Group Care Facilities <https://etdmpub.florida-et.org/metadata/groupcare.htm>
- Mobile Home Parks in Florida https://etdmpub.florida-et.org/metadata/gc_mobilehomes.htm
- Migrant Camps in Florida <https://etdmpub.florida-et.org/metadata/migrant.htm>
- Veteran Organizations and Facilities https://etdmpub.florida-et.org/metadata/gc_veterans.htm
- Generalized Land Use - Florida DOT District 7 https://etdmpub.florida-et.org/metadata/d7_lu_gen.htm
- Census Block Groups in Florida https://etdmpub.florida-et.org/metadata/e2_cenacs_cci.htm
- 1990 Census Block Groups in Florida https://etdmpub.florida-et.org/metadata/e2_cenblkgrp_1990_cci.htm
- 2000 Census Block Groups in Florida https://etdmpub.florida-et.org/metadata/e2_cenblkgrp_2000_cci.htm
- 2010 Census Block Groups in Florida https://etdmpub.florida-et.org/metadata/e2_cenblkgrp_2010_cci.htm