

Sociocultural Data Report

Fort Denaud

Area: 20.854 square miles
Jurisdiction(s): **Cities:** Labelle
Counties: Glades, Lee, Hendry

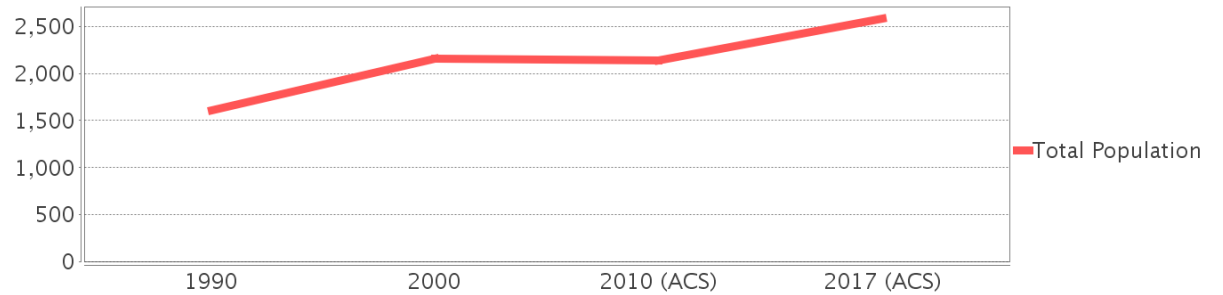
General Population Trends

Description	1990	2000	2010 (ACS)	2017 (ACS)
Total Population	1,612	2,158	2,138	2,585
Total Households	592	808	836	935
Average Persons per Acre	0.16	0.24	0.16	0.18
Average Persons per Household	2.89	2.84	2.75	2.84
Average Persons per Family	3.23	3.35	3.00	3.37
Males	817	1,178	1,078	1,481
Females	795	980	1,060	1,104

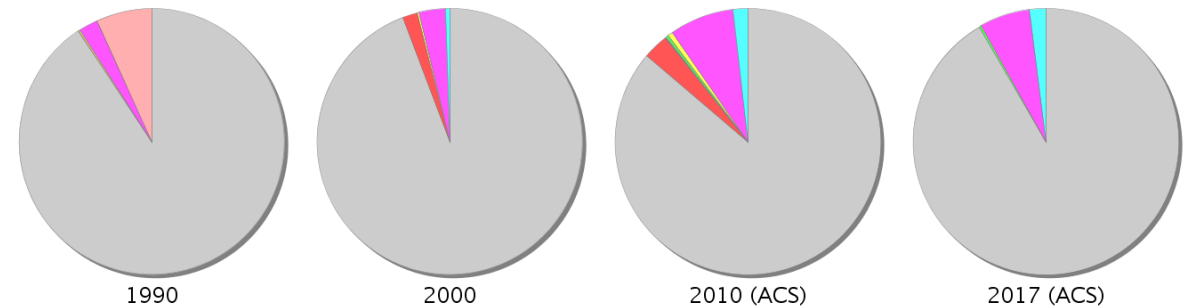
Race and Ethnicity Trends

Description	1990	2000	2010 (ACS)	2017 (ACS)
White Alone	1,567 (97.21%)	2,032 (94.16%)	1,843 (86.20%)	2,367 (91.57%)
Black or African American Alone	1 (0.06%)	40 (1.85%)	67 (3.13%)	0 (0.00%)
Native Hawaiian and Other Pacific Islander Alone	0 (0.00%)	0 (0.00%)	1 (0.05%)	0 (0.00%)
Asian Alone	0 (0.00%)	0 (0.00%)	8 (0.37%)	7 (0.27%)
American Indian or Alaska Native Alone	3 (0.19%)	4 (0.19%)	12 (0.56%)	0 (0.00%)
Some Other Race Alone	41 (2.54%)	69 (3.20%)	168 (7.86%)	159 (6.15%)
Claimed 2 or More Races	NA (NA)	12 (0.56%)	39 (1.82%)	51 (1.97%)
Hispanic or Latino of Any Race	117 (7.26%)	245 (11.35%)	347 (16.23%)	688 (26.62%)
Not Hispanic or Latino	1,495 (92.74%)	1,913 (88.65%)	1,791 (83.77%)	1,897 (73.38%)
Minority	122 (7.57%)	298 (13.81%)	450 (21.05%)	729 (28.20%)

Population

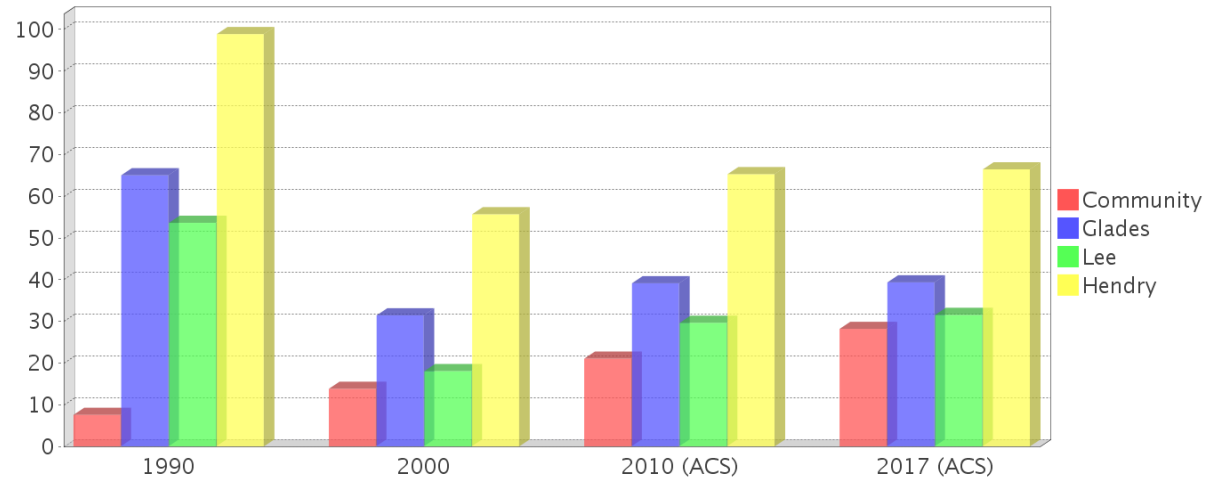


Race



● White Alone
 ● Black or African American Alone
 ● Native Hawaiian and Other Pacific Islander Alone
 ● Asian Alone
 ● American Indian or Alaska Native Alone
 ● Some Other Race Alone
 ● Claimed 2 or More Races (after 1990)
 ● Hispanic or Latino of Any Race (1990 only)

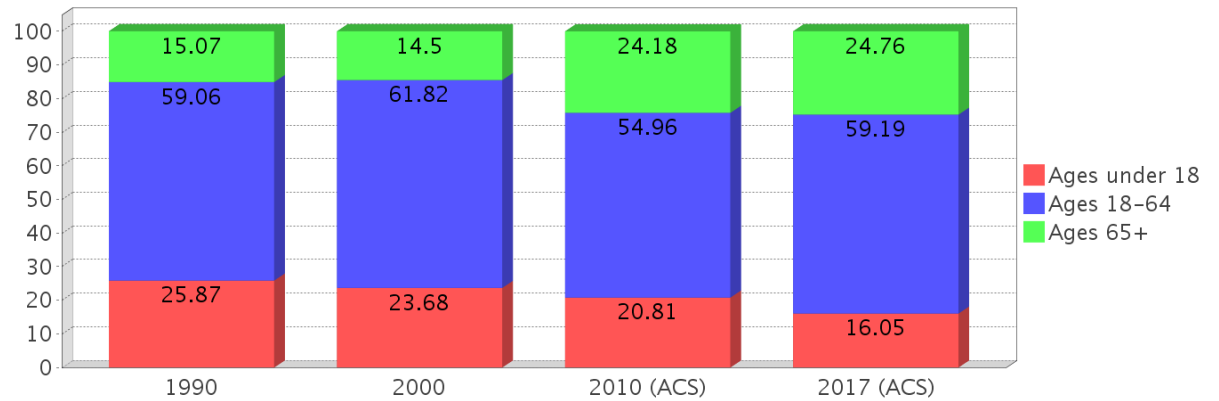
Minority Percentage Population



Age Trends

Description	1990	2000	2010 (ACS)	2017 (ACS)
Under Age 5	5.65%	3.34%	5.89%	3.71%
Ages 5-17	20.22%	20.34%	14.92%	12.34%
Ages 18-21	4.40%	6.53%	3.79%	3.13%
Ages 22-29	7.94%	4.91%	6.92%	11.53%
Ages 30-39	15.07%	9.87%	10.71%	5.42%
Ages 40-49	13.15%	17.98%	10.52%	15.47%
Ages 50-64	18.49%	22.52%	23.01%	23.64%
Age 65 and Over	15.07%	14.50%	24.18%	24.76%
-Ages 65-74	9.31%	8.48%	14.27%	11.37%
-Ages 75-84	4.53%	4.03%	7.95%	8.63%
-Age 85 and Over	1.24%	1.99%	1.96%	4.76%
Median Age	NA	33	43	50

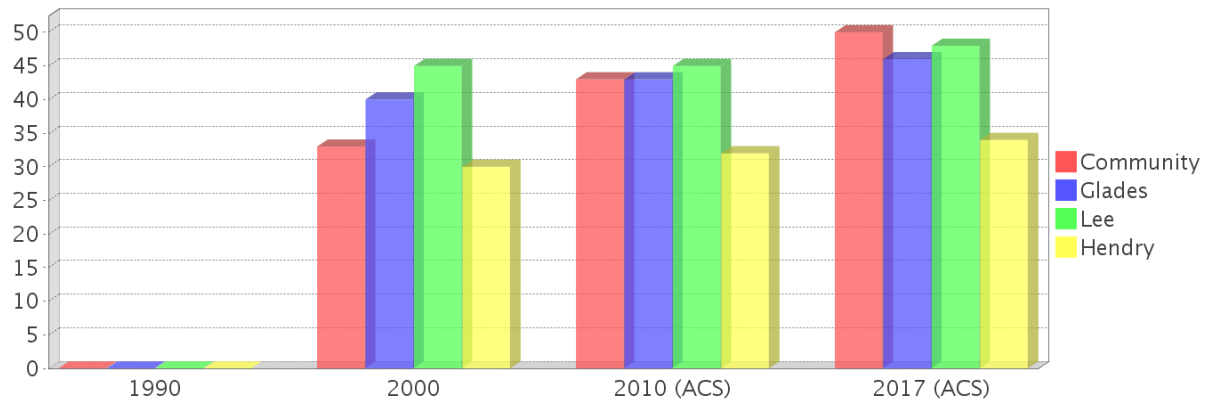
Percentage Population by Age Group



Income Trends

Description	1990	2000	2010 (ACS)	2017 (ACS)
Median Household Income	\$20,977	\$31,369	\$44,632	\$43,030
Median Family Income	\$21,953	\$35,274	\$61,250	\$53,523
Population below Poverty Level	15.20%	18.16%	7.90%	12.57%
Households below Poverty Level	11.82%	15.35%	4.43%	10.16%
Households with Public Assistance Income	4.05%	4.33%	0.00%	1.71%

Median Age Comparison

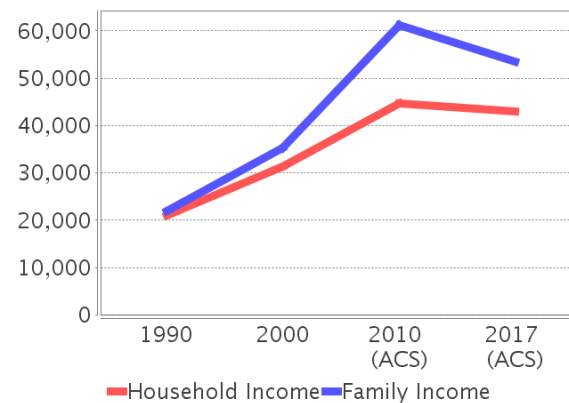


Disability Trends

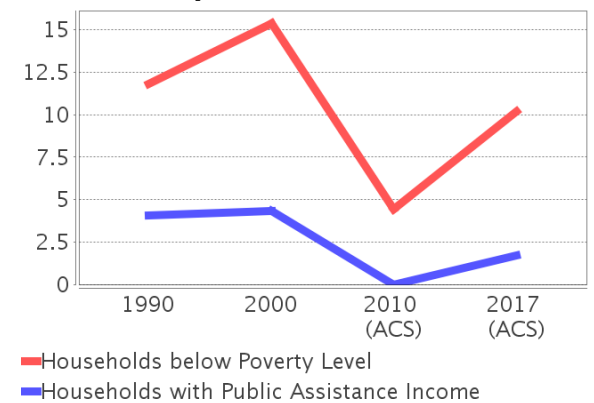
See the Data Sources section below for an explanation about the differences in disability data among the various years.

Description	1990	2000	2010 (ACS)	2017 (ACS)
Population 16 To 64 Years with a disability	120 (10.08%)	287 (13.76%)	(NA)	(NA)
Population 20 To 64 Years with a disability	(NA)	(NA)	(NA)	325 (21.62%)

Income Trends



Poverty and Public Assistance



Educational Attainment Trends

Age 25 and Over

Description	1990	2000	2010 (ACS)	2017 (ACS)
Less than 9th Grade	98 (9.45%)	203 (14.00%)	19 (1.14%)	355 (18.10%)
9th to 12th Grade, No Diploma	254 (24.49%)	207 (14.28%)	190 (11.43%)	159 (8.11%)
High School Graduate or Higher	685 (66.06%)	1,040 (71.72%)	1,453 (87.42%)	1,446 (73.74%)
Bachelor's Degree or Higher	141 (13.60%)	174 (12.00%)	233 (14.02%)	163 (8.31%)

Language Trends

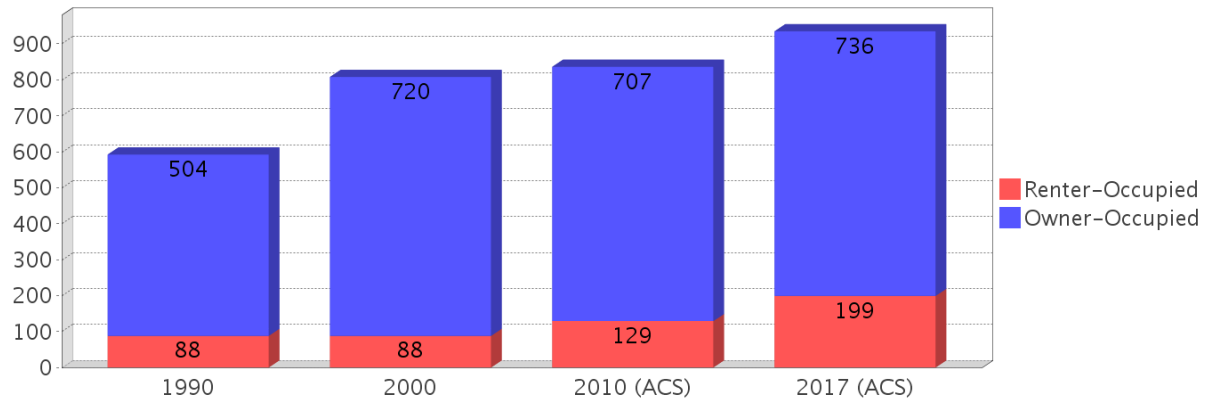
Age 5 and Over

Description	1990	2000	2010 (ACS)	2017 (ACS)
Speaks English Well	47 (3.13%)	24 (1.15%)	109 (5.35%)	41 (1.65%)
Speaks English Not Well	NA (NA)	160 (7.67%)	47 (2.31%)	115 (4.62%)
Speaks English Not at All	NA (NA)	14 (0.67%)	0 (0.00%)	195 (7.83%)
Speaks English Not Well or Not at All	55 (3.66%)	174 (8.35%)	47 (2.31%)	310 (12.45%)

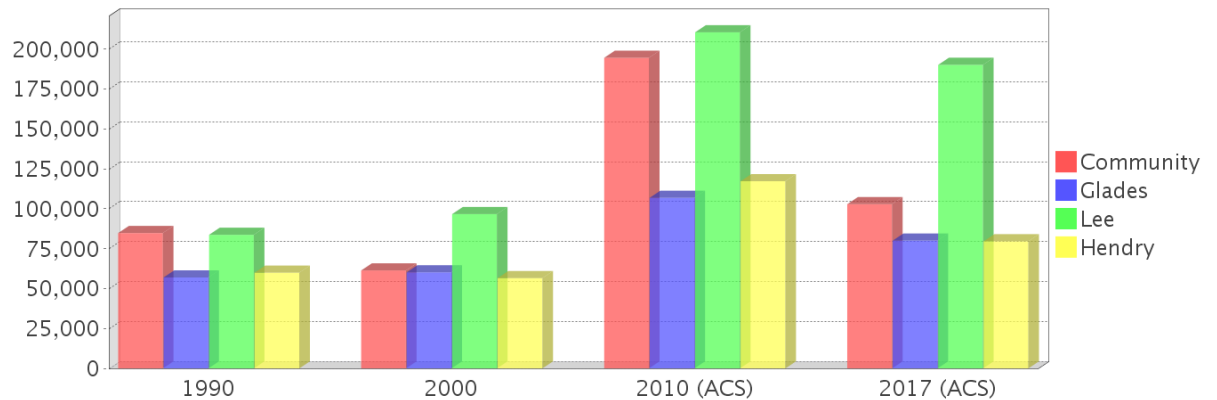
Housing Trends

Description	1990	2000	2010 (ACS)	2017 (ACS)
Total	687	903	1,077	1,095
Units per Acre	0.06	0.08	0.09	0.09
Single-Family Units	365	647	823	607
Multi-Family Units	4	0	0	0
Mobile Home Units	223	245	470	453
Owner-Occupied Units	504	720	707	736
Renter-Occupied Units	88	88	129	199
Vacant Units	94	95	241	160
Median Housing Value	\$84,800	\$61,400	\$194,600	\$102,900
Occupied Housing Units w/No Vehicle	28 (4.72%)	32 (3.96%)	0 (0.00%)	20 (2.14%)

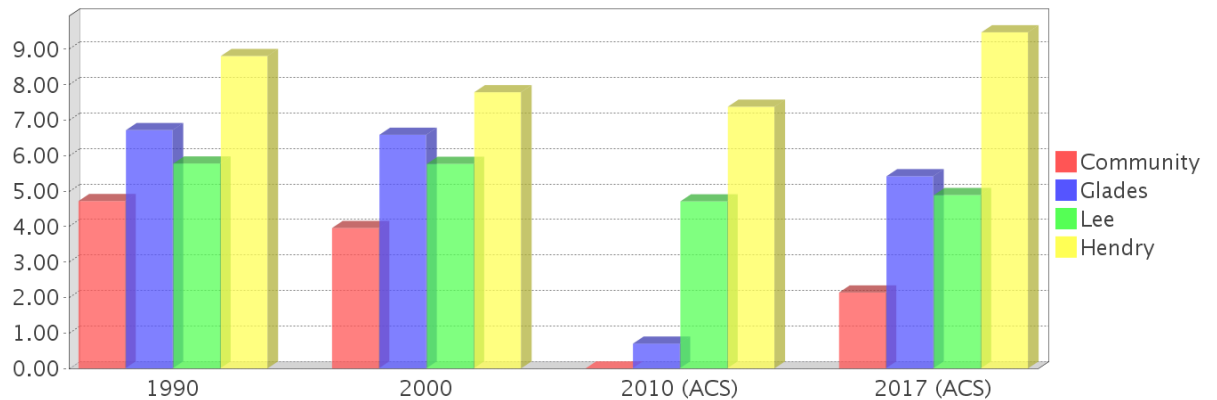
Housing Tenure



Median Housing Value Comparison

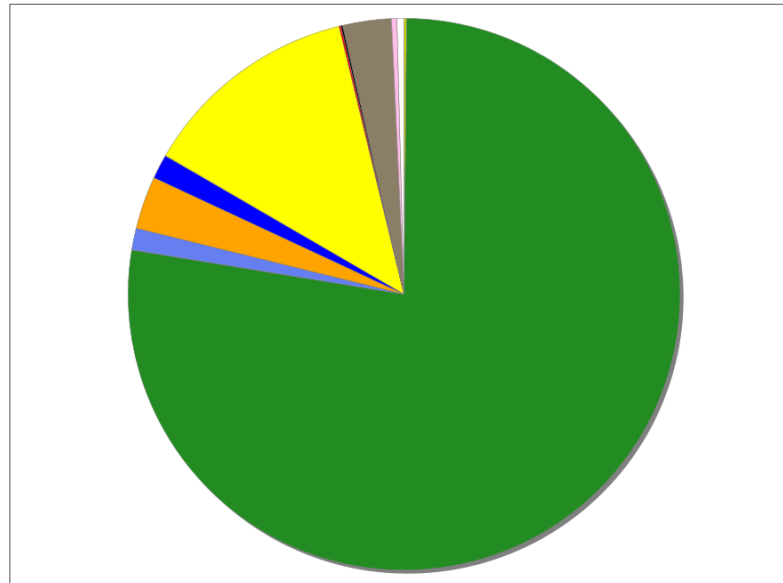


Occupied Units With No Vehicles Available



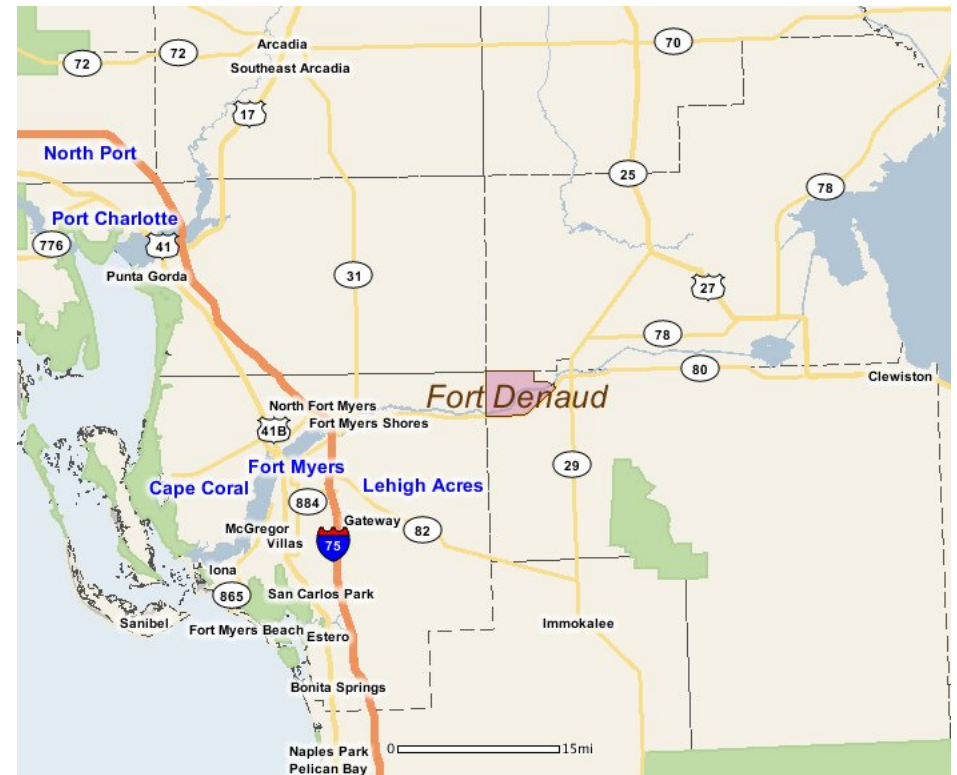
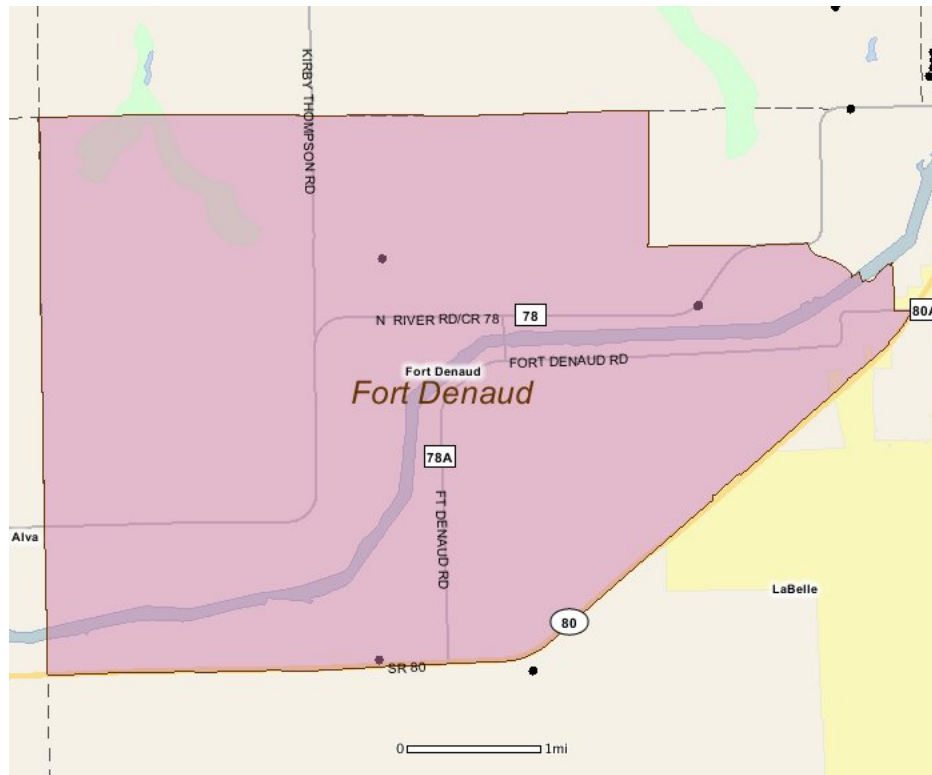
Existing Land Use

Land Use Type	Acres	Percentage
Acreage Not Zoned For Agriculture	19	0.14%
Agricultural	9,555	71.59%
Centrally Assessed	0	0.00%
Industrial	2	0.01%
Institutional	158	1.18%
Mining	0	0.00%
Other	381	2.85%
Public/Semi-Public	175	1.31%
Recreation	<0.5	<0.00%
Residential	1,587	11.89%
Retail/Office	13	0.10%
Row	15	0.11%
Vacant Residential	348	2.61%
Vacant Nonresidential	41	0.31%
Water	0	0.00%
Parcels With No Values	50	0.37%



- Acreage Not Zoned For Agriculture
- Agricultural
- Centrally Assessed
- Industrial
- Institutional
- Mining
- Other
- Public/Semi-Public
- Recreation
- Residential
- Retail/Office
- Row
- Vacant Residential
- Vacant Nonresidential
- Water
- Parcels With No Values

Location Maps



Community Facilities

The community facilities information below is useful in a variety of ways for environmental evaluations. These community resources should be evaluated for potential sociocultural effects, such as accessibility and relocation potential. The facility types may indicate the types of population groups present in the project study area. Facility staff and leaders can be sources of community information such as who uses the facility and how it is used. Additionally, community facilities are potential public meeting venues.

Religious Centers (Points)

Facility Name	Address	Zip Code
LA BELLE BAPTIST TEMPLE	5520 W STATE ROAD 80	33935

US Census Places

Facility Name
Alva
LaBelle
Fort Denaud

Block Groups

The following Census Block Groups were used to calculate demographics for this report.

1990 Census Block Groups

120519604006, 120519603003, 120710303002, 120519604007, 120710303001, 120439502001

2000 Census Block Groups

120510004007, 120510003003, 120430002001, 120510004006, 120710303001, 120510003004, 120710303002

2010 Census Block Groups

120510003003, 120710303002, 120510004022, 120430002002, 120710303003, 120150101001, 120710303001, 120510004011

2017 Census Block Groups

120150101001, 120510004011, 120510003003, 120430002002, 120710303003, 120710303001, 120710303002, 120510004022

Data Sources

Area

The geographic area of the community based on a user-specified community boundary or area of interest (AOI) boundary.

Jurisdiction

Jurisdiction(s) includes local government boundaries that intersect the community or AOI boundary.

Demographic Data

Demographic data reported under the headings General Population Trends, Race and Ethnicity Trends, Age Trends, Income Trends, Educational Attainment Trends, Language Trends, and Housing Trends is from the U.S. Decennial Census (1990, 2000) and the American Community Survey (ACS) 5-year estimates from 2006-2010 and 2013-2017. The data was gathered at the block group level for user-specified community boundaries and AOIs, and at the county level for counties. Depending on the dataset, the data represents 100% counts (Census Summary File 1) or sample-based information (Census Summary File 3 or ACS).

About the Census Data:

User-specified community boundaries and AOIs do not always correspond precisely to block group boundaries. In these instances, adjustment of the geographic area and data for affected block groups is required to estimate the actual population. To improve the accuracy of such estimates in the SDR report, the census block group data was adjusted to exclude all census blocks with a population of two or fewer. These areas were eliminated from the corresponding years' block groups. Next, the portion of the block group that lies outside of the community or AOI boundary was removed. The demographics within each block group were then recalculated, assuming an equal area distribution of the population. Note that there may be areas where there is no population.

Use caution when comparing the 100% count data (Decennial Census) to the sample-based data (ACS). In any given year, about one in 40 or 2.5% of U.S. households will receive the ACS questionnaire. Over any five-year period, about one in eight households will receive the questionnaire, as compared to about one in six that received the long form questionnaire for the Decennial Census 2000. (Source: <http://mcdc.missouri.edu/pub/data/acs/Readme.shtml>) The U.S.

Census Bureau provides help with this process:

<https://www.census.gov/programs-surveys/acs/guidance/comparing-acs-data/2017.html>

Use caution when interpreting changes in Race and Ethnicity over time. Starting with the 2000 Decennial Census, respondents were given a new option of selecting one or more race categories. Also in 2000, the placement of the question about Hispanic origin changed, helping to increase responsiveness to the Hispanic-origin question. Because of these and other changes, the 1990 data on race and ethnicity are not directly comparable with data from later censuses. (Source: <http://www.census.gov/prod/2001pubs/c2kbr01-1.pdf>;
<http://www.census.gov/pred/www/rpts/Race%20and%20Ethnicity%20FINAL%20report.pdf>)

The "Minority" calculations are derived from Census and ACS data using both the race and ethnicity responses. On this report, "Minority" refers to individuals who list a race other than White and/or list their ethnicity as Hispanic/Latino. In other words, people who are multi-racial, any single race other than White, or Hispanic/Latino of any race are considered minorities.

Disability data is not included in the 2010 Decennial Census, or the 2006-2010 ACS. This data is available in the 2013-2017 ACS.

Because of changes made to the Census and ACS questions between 1990 and 2017, disability variables should not be compared from year to year. For example: 1) With the 1990 data the disabilities are listed as a "work disability" while this distinction is not made with 2000 or 2017 ACS data; 2) The 2017 ACS data includes the institutionalized population (e.g. persons in prisons and group homes), while this population is not included in 1990 or 2000; 3) the age groupings changed over the years.

Please take the following two concerns into account when viewing this data: 1) With the 1990 data the disabilities are listed as a "work disability" while this distinction is not made with 2000 or 2017 ACS data; 2) The 2017 ACS data includes the institutionalized population (e.g. persons in prisons and group homes), while this population is not included in 1990 or 2000.

The category Bachelor's Degree or Higher under the heading Educational Attainment Trends is a subset of the category High School Graduate or Higher.

Income of households. This includes the income of the householder and all other individuals 15 years old and over in the household, whether they are related to the householder or not. Because many households consist of only one person, average household income is usually less than average family income.

Income of families. In compiling statistics on family income, the incomes of all members 15 years old and over related to the householder are summed and treated as a single amount.

Age Trends median age for 1990 is not available.

Land Use Data

The Land Use information Indicates acreages and percentages for the generalized land use types used to group parcel-specific, existing land use assigned by the county property appraiser office according to the Florida Department of Revenue land use codes.

Community Facilities Data

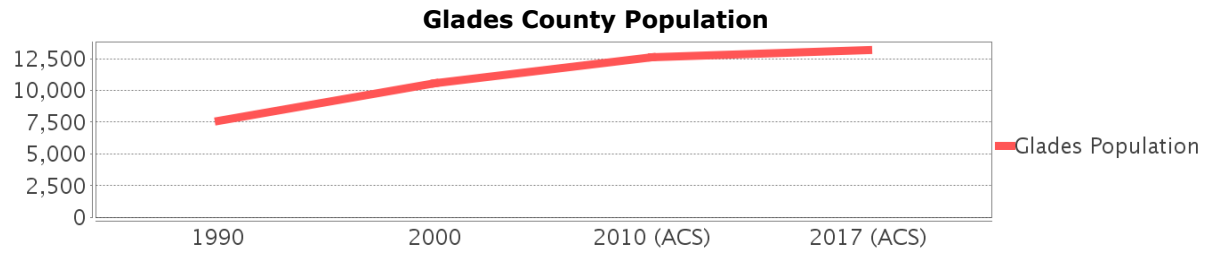
- Assisted Rental Housing Units - Identifies multifamily rental developments that receive funding assistance under federal, state, and local government programs to offer affordable housing as reported by the Shimberg Center for Housing Studies, University of Florida.
- Mobile Home Parks - Identifies approved or acknowledged mobile home parks reported by the Florida Department of Business and Professional Regulation and Florida Department of Health.

- Migrant Camps - Identifies migrant labor camp facilities inspected by the Florida Department of Health.
- Group Care Facilities - Identifies group care facilities inspected by the Florida Department of Health.
- Community Center and Fraternal Association Facilities - Identifies facilities reported by multiple sources.
- Law Enforcement Correctional Facilities - Identifies facilities reported by multiple sources.
- Cultural Centers - Identifies cultural centers including organizations, buildings, or complexes that promote culture and arts (e.g., aquariums and zoological facilities; arboreta and botanical gardens; dinner theaters; drive-ins; historical places and services; libraries; motion picture theaters; museums and art galleries; performing arts centers; performing arts theaters; planetariums; studios and art galleries; and theater producers stage facilities) reported by multiple sources.
- Fire Department and Rescue Station Facilities - Identifies facilities reported by multiple sources.
- Government Buildings - Identifies local, state, and federal government buildings reported by multiple sources.
- Health Care Facilities - Identifies health care facilities including abortion clinics, dialysis clinics, medical doctors, nursing homes, osteopaths, state laboratories/clinics, and surgicenters/walk-in clinics reported by the Florida Department of Health.
- Hospital Facilities - Identifies hospital facilities reported by multiple sources.
- Law Enforcement Facilities - Identifies law enforcement facilities reported by multiple sources.
- Parks and Recreational Facilities - Identifies parks and recreational facilities reported by multiple sources.
- Religious Center Facilities - Identifies religious centers including churches, temples, synagogues, mosques, chapels, centers, and other types of religious facilities reported by multiple sources.
- Private and Public Schools - Identifies private and public schools reported by multiple sources.
- Social Service Centers - Identifies social service centers reported by multiple sources.
- Veteran Organizations and Facilities

Glades County Demographic Profile

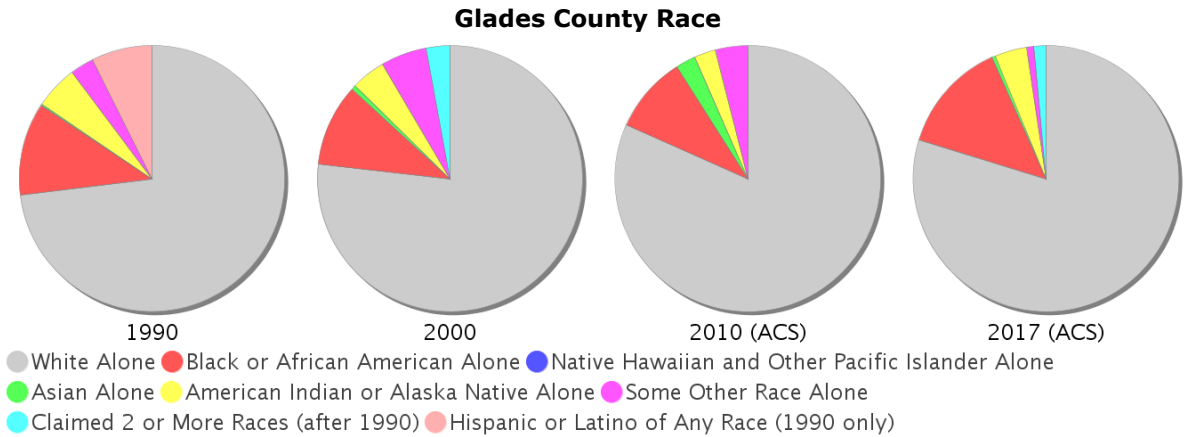
General Population Trends - Glades

Description	1990	2000	2010 (ACS)	2017 (ACS)
Total Population	7,591	10,576	12,617	13,197
Total Households	2,885	3,852	4,165	4,297
Average Persons per Acre	0.012	0.017	0.02	0.021
Average Persons per Household	2.631	2.493	3.00	2.74
Average Persons per Family	3.052	2.968	3.511	3.534
Males	3,848	5,764	6,947	7,479
Females	3,743	4,812	5,670	5,718



Race and Ethnicity Trends - Glades

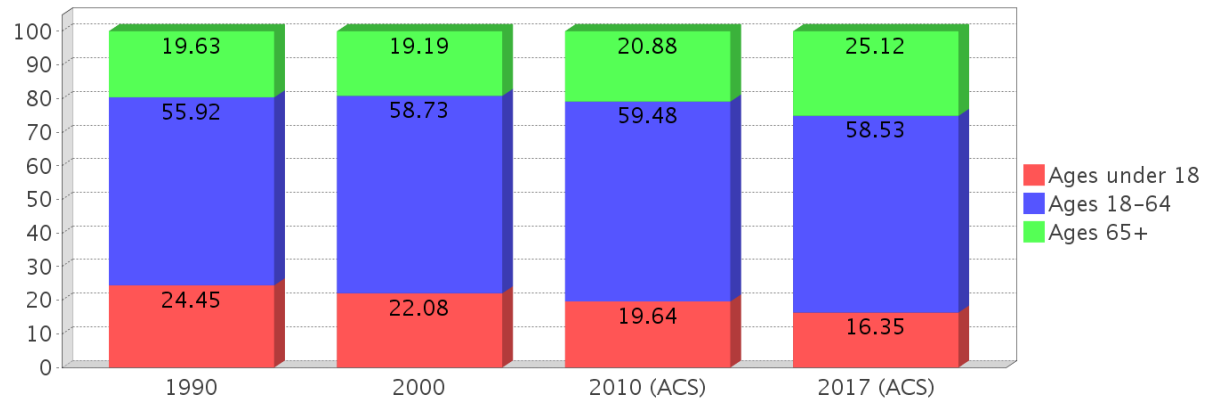
Description	1990	2000	2010 (ACS)	2017 (ACS)
White Alone	5,987 (78.87%)	8,117 (76.75%)	10,298 (81.62%)	10,524 (79.75%)
Black or African American Alone	922 (12.15%)	1,060 (10.02%)	1,182 (9.37%)	1,794 (13.59%)
Native Hawaiian and Other Pacific Islander Alone	(NA)	0 (0.00%)	0 (0.00%)	0 (0.00%)
Asian Alone	16 (0.21%)	62 (0.59%)	309 (2.45%)	51 (0.39%)
American Indian or Alaska Native Alone	431 (5.68%)	441 (4.17%)	332 (2.63%)	523 (3.96%)
Some Other Race Alone	235 (3.10%)	590 (5.58%)	496 (3.93%)	115 (0.87%)
Claimed 2 or More Races	(NA)	306 (2.89%)	0 (0.00%)	190 (1.44%)
Hispanic or Latino of Any Race	605 (7.97%)	1,589 (15.02%)	2,480 (19.66%)	2,745 (20.80%)
Not Hispanic or Latino	6,986 (92.03%)	8,987 (84.98%)	10,137 (80.34%)	10,452 (79.20%)
Minority	4,937 (65.04%)	3,327 (31.46%)	4,937 (39.13%)	5,192 (39.34%)



Age Trends - Glades

Description	1990	2000	2010 (ACS)	2017 (ACS)
Under Age 5	6.42%	5.77%	4.47%	3.61%
Ages 5-17	18.03%	16.31%	15.17%	12.74%
Ages 18-21	4.02%	4.06%	5.37%	4.51%
Ages 22-29	8.56%	9.47%	8.57%	9.77%
Ages 30-39	12.96%	13.70%	13.42%	12.63%
Ages 40-49	11.34%	12.59%	12.85%	10.76%
Ages 50-64	19.04%	18.90%	19.28%	20.85%
Age 65 and Over	19.63%	19.19%	20.88%	25.12%
-Ages 65-74	12.98%	12.44%	13.25%	13.98%
-Ages 75-84	5.52%	5.97%	7.01%	8.30%
-Age 85 and Over	1.13%	0.78%	0.62%	2.84%
Median Age	NA	40	43	46

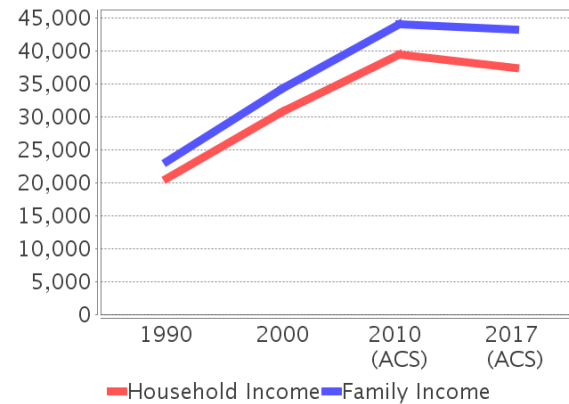
Percentage Population by Age Group - Glades



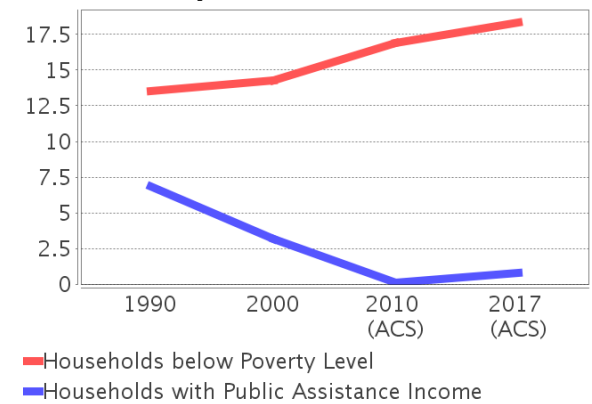
Income Trends - Glades

Description	1990	2000	2010 (ACS)	2017 (ACS)
Median Household Income	\$20,687	\$30,774	\$39,429	\$37,385
Median Family Income	\$23,175	\$34,223	\$44,046	\$43,206
Population below Poverty Level	14.01%	15.19%	19.63%	17.98%
Households below Poverty Level	13.52%	14.30%	16.90%	18.32%
Households with Public Assistance Income	6.83%	3.17%	0.10%	0.81%

Income Trends



Poverty and Public Assistance



Disability Trends - Glades

See the Data Sources section below for an explanation about the differences in disability data among the various years.

Description	1990	2000	2010 (ACS)	2017 (ACS)
Population 16 To 64 Years with a disability	572 (9.75%)	1,431 (15.49%)	NA (NA)	NA (NA)
Population 20 To 64 Years with a disability	NA (NA)	NA (NA)	NA (NA)	863 (14.22%)

Educational Attainment Trends - Glades

Age 25 and Over

Description	1990	2000	2010 (ACS)	2017 (ACS)
Less than 9th Grade	836 (16.08%)	715 (9.66%)	1,008 (11.07%)	1,178 (11.91%)
9th to 12th Grade, No Diploma	1,379 (26.53%)	1,518 (20.51%)	1,606 (17.63%)	1,429 (14.44%)
High School Graduate or Higher	2,983 (57.39%)	5,170 (69.84%)	6,494 (71.30%)	7,287 (73.65%)
Bachelor's Degree or Higher	370 (7.12%)	728 (9.83%)	1,033 (11.34%)	1,077 (10.89%)

Language Trends - Glades

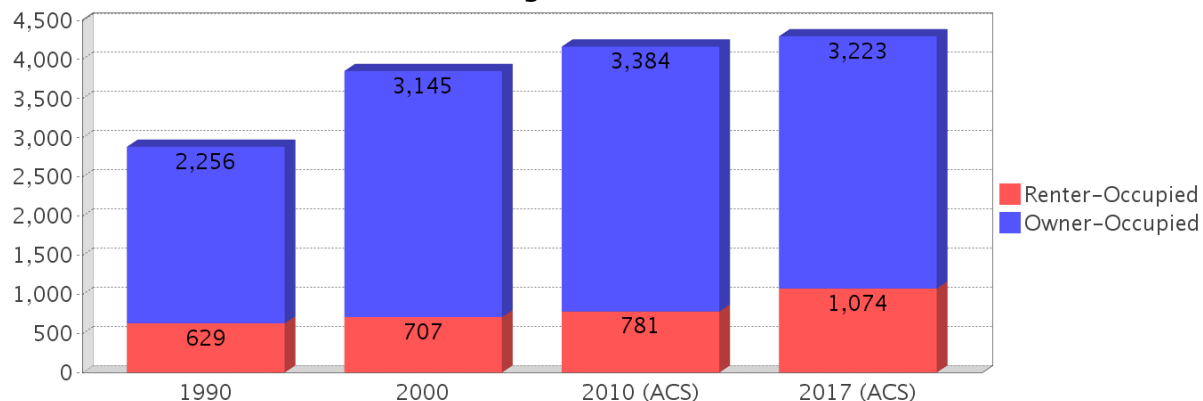
Age 5 and Over

Description	1990	2000	2010 (ACS)	2017 (ACS)
Speaks English Well	138 (1.93%)	283 (2.84%)	529 (4.39%)	744 (5.85%)
Speaks English Not Well	NA (NA)	275 (2.76%)	686 (5.69%)	430 (3.38%)
Speaks English Not at All	NA (NA)	148 (1.49%)	469 (3.89%)	113 (0.89%)
Speaks English Not Well or Not at All	211 (2.96%)	423 (4.24%)	1,155 (9.58%)	543 (4.27%)

Housing Trends - Glades

Description	1990	2000	2010 (ACS)	2017 (ACS)
Total	4,624	5,790	6,819	6,985
Units per Acre	0.007	0.009	0.011	0.011
Single-Family Units	1,244	2,111	2,515	2,947
Multi-Family Units	145	247	360	410
Mobile Home Units	1,479	3,180	3,898	3,562
Owner-Occupied Units	2,256	3,145	3,384	3,223
Renter-Occupied Units	629	707	781	1,074
Vacant Units	1,739	1,938	2,654	2,688
Median Housing Value	\$57,000	\$60,200	\$106,900	\$80,100
Occupied Housing Units w/No Vehicle	194 (6.72%)	254 (6.59%)	29 (0.70%)	233 (5.42%)

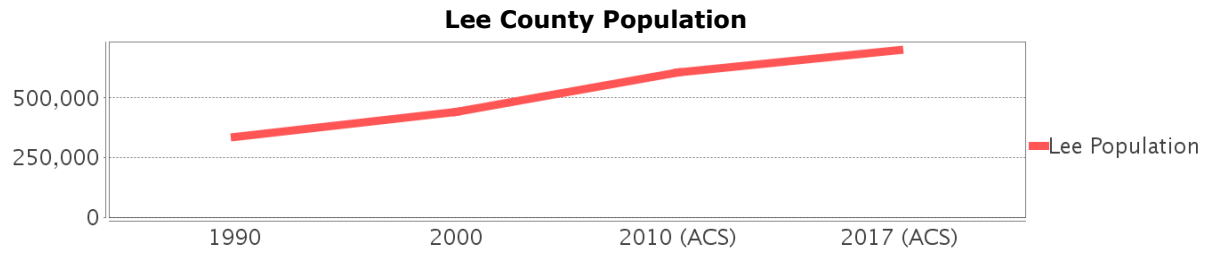
Housing Tenure - Glades



Lee County Demographic Profile

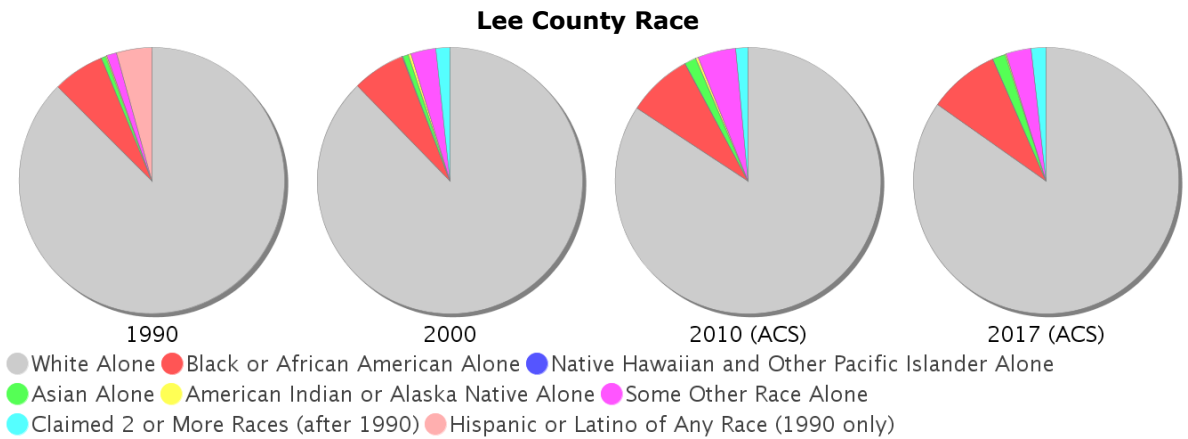
General Population Trends - Lee

Description	1990	2000	2010 (ACS)	2017 (ACS)
Total Population	335,113	440,888	606,165	700,165
Total Households	140,124	188,599	245,751	264,325
Average Persons per Acre	0.641	0.82	1.128	1.302
Average Persons per Household	2.392	2.306	2.00	2.61
Average Persons per Family	2.802	2.809	3.012	3.28
Males	161,917	215,618	298,205	342,731
Females	173,196	225,270	307,960	357,434



Race and Ethnicity Trends - Lee

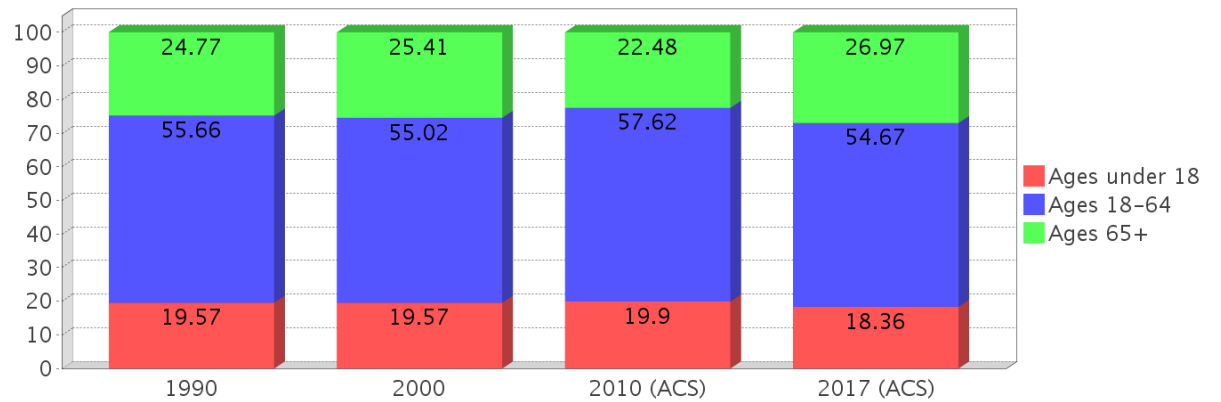
Description	1990	2000	2010 (ACS)	2017 (ACS)
White Alone	306,200 (91.37%)	386,502 (87.66%)	510,405 (84.20%)	593,227 (84.73%)
Black or African American Alone	22,184 (6.62%)	28,570 (6.48%)	48,208 (7.95%)	60,664 (8.66%)
Native Hawaiian and Other Pacific Islander Alone	(NA)	238 (0.05%)	86 (0.01%)	382 (0.05%)
Asian Alone	1,820 (0.54%)	3,159 (0.72%)	8,528 (1.41%)	10,856 (1.55%)
American Indian or Alaska Native Alone	672 (0.20%)	1,340 (0.30%)	1,620 (0.27%)	1,246 (0.18%)
Some Other Race Alone	4,163 (1.24%)	13,489 (3.06%)	28,409 (4.69%)	21,277 (3.04%)
Claimed 2 or More Races	(NA)	7,590 (1.72%)	8,909 (1.47%)	12,513 (1.79%)
Hispanic or Latino of Any Race	15,094 (4.50%)	41,993 (9.52%)	106,696 (17.60%)	141,544 (20.22%)
Not Hispanic or Latino	320,019 (95.50%)	398,895 (90.48%)	499,469 (82.40%)	558,621 (79.78%)
Minority	179,706 (53.63%)	79,629 (18.06%)	179,706 (29.65%)	220,915 (31.55%)



Age Trends - Lee

Description	1990	2000	2010 (ACS)	2017 (ACS)
Under Age 5	5.95%	5.24%	5.57%	4.81%
Ages 5-17	13.62%	14.33%	14.33%	13.54%
Ages 18-21	4.08%	3.48%	4.56%	4.16%
Ages 22-29	10.22%	7.51%	8.64%	8.48%
Ages 30-39	13.70%	12.49%	11.14%	10.42%
Ages 40-49	10.99%	12.99%	12.93%	11.18%
Ages 50-64	16.67%	18.55%	20.35%	20.44%
Age 65 and Over	24.77%	25.41%	22.48%	26.97%
-Ages 65-74	15.35%	13.74%	12.30%	15.17%
-Ages 75-84	7.72%	9.23%	7.52%	8.59%
-Age 85 and Over	1.71%	2.44%	2.66%	3.22%
Median Age	NA	45	45	48

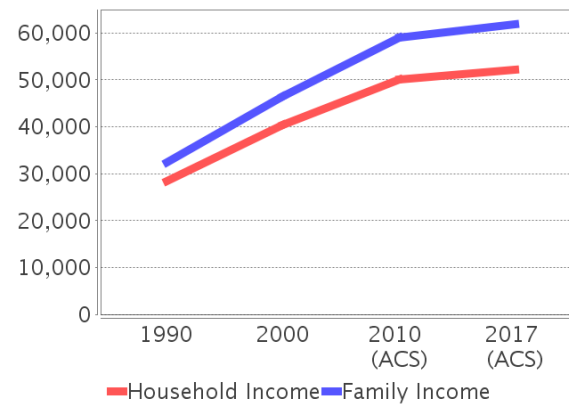
Percentage Population by Age Group - Lee



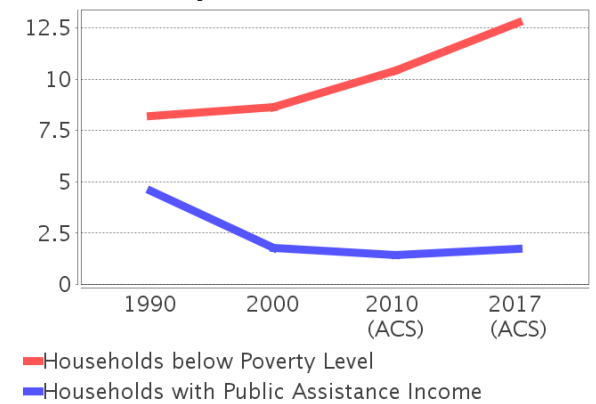
Income Trends - Lee

Description	1990	2000	2010 (ACS)	2017 (ACS)
Median Household Income	\$28,448	\$40,319	\$50,014	\$52,052
Median Family Income	\$32,310	\$46,430	\$58,950	\$61,847
Population below Poverty Level	9.16%	9.73%	12.05%	14.87%
Households below Poverty Level	8.22%	8.64%	10.40%	12.75%
Households with Public Assistance Income	4.56%	1.75%	1.42%	1.72%

Income Trends



Poverty and Public Assistance



Disability Trends - Lee

See the Data Sources section below for an explanation about the differences in disability data among the various years.

Description	1990	2000	2010 (ACS)	2017 (ACS)
Population 16 To 64 Years with a disability	18,191 (6.67%)	51,238 (12.39%)	NA (NA)	NA (NA)
Population 20 To 64 Years with a disability	NA (NA)	NA (NA)	NA (NA)	36,484 (10.02%)

Educational Attainment Trends - Lee

Age 25 and Over

Description	1990	2000	2010 (ACS)	2017 (ACS)
Less than 9th Grade	17,582 (7.16%)	16,393 (5.00%)	21,284 (4.84%)	27,749 (5.32%)
9th to 12th Grade, No Diploma	39,144 (15.94%)	41,627 (12.70%)	37,304 (8.49%)	38,288 (7.34%)
High School Graduate or Higher	188,833 (76.90%)	269,652 (82.29%)	380,870 (86.67%)	455,532 (87.34%)
Bachelor's Degree or Higher	40,392 (16.45%)	69,153 (21.10%)	108,286 (24.64%)	142,016 (27.23%)

Language Trends - Lee

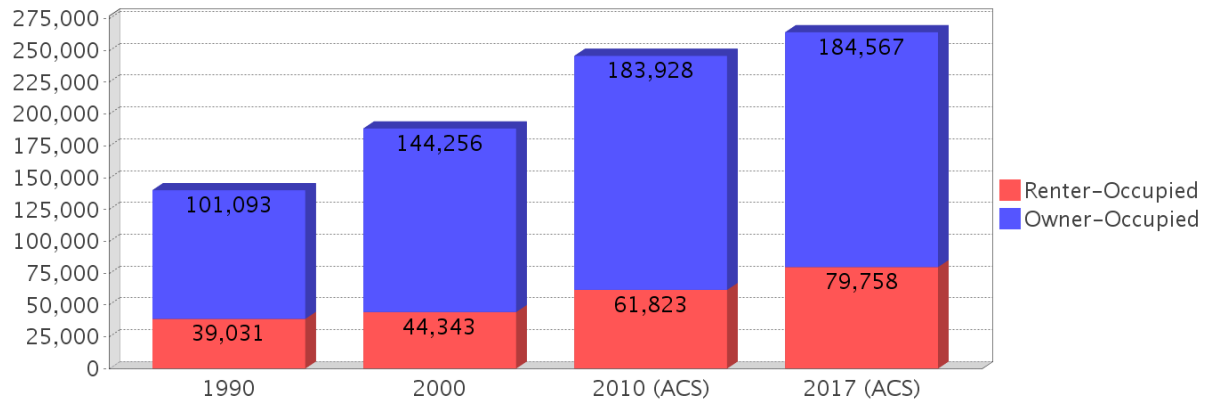
Age 5 and Over

Description	1990	2000	2010 (ACS)	2017 (ACS)
Speaks English Well	5,168 (1.64%)	10,843 (2.60%)	26,023 (4.55%)	25,271 (3.79%)
Speaks English Not Well	NA (NA)	9,080 (2.17%)	22,205 (3.88%)	20,999 (3.15%)
Speaks English Not at All	NA (NA)	4,501 (1.08%)	11,028 (1.93%)	16,443 (2.47%)
Speaks English Not Well or Not at All	3,752 (1.19%)	13,581 (3.25%)	33,233 (5.81%)	37,442 (5.62%)

Housing Trends - Lee

Description	1990	2000	2010 (ACS)	2017 (ACS)
Total	189,051	245,405	363,892	383,224
Units per Acre	0.361	0.457	0.677	0.713
Single-Family Units	82,598	134,511	219,692	238,495
Multi-Family Units	35,495	70,952	103,959	106,749
Mobile Home Units	20,936	38,084	39,641	37,452
Owner-Occupied Units	101,093	144,256	183,928	184,567
Renter-Occupied Units	39,031	44,343	61,823	79,758
Vacant Units	48,927	56,806	118,141	118,899
Median Housing Value	\$83,700	\$96,700	\$210,600	\$190,200
Occupied Housing Units w/No Vehicle	8,105 (5.78%)	10,873 (5.77%)	11,565 (4.71%)	12,930 (4.89%)

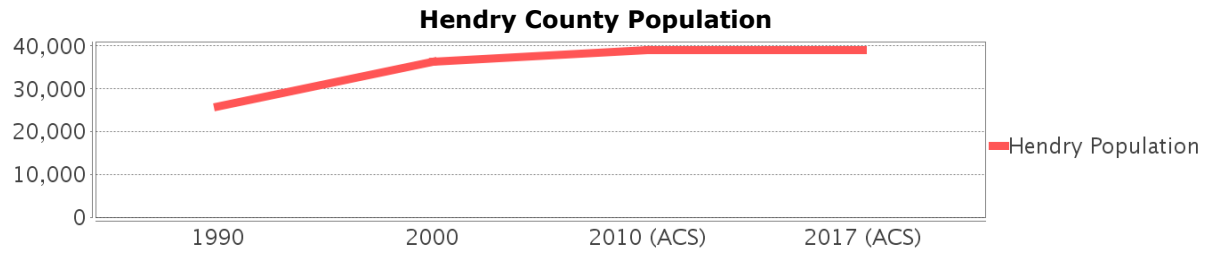
Housing Tenure - Lee



Hendry County Demographic Profile

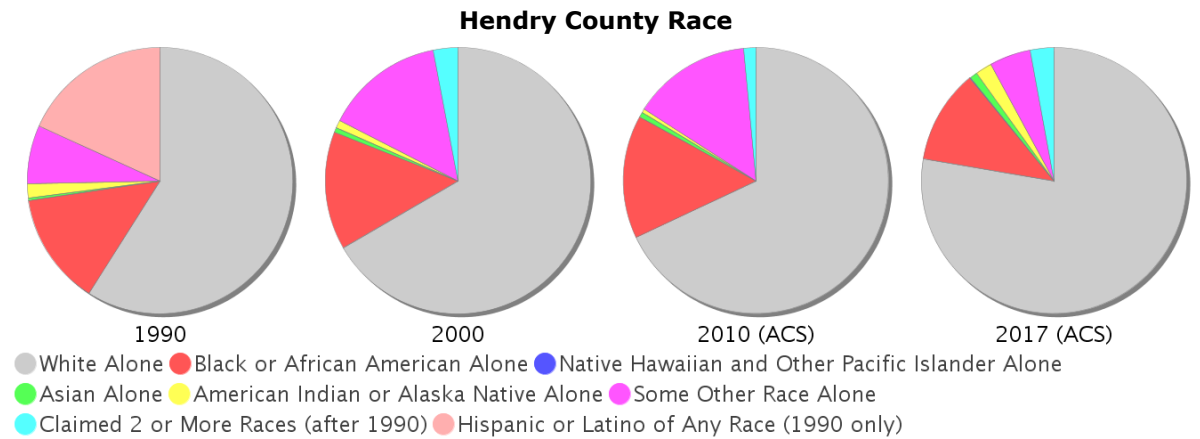
General Population Trends - Hendry

Description	1990	2000	2010 (ACS)	2017 (ACS)
Total Population	25,773	36,210	39,030	39,064
Total Households	8,402	10,850	11,200	12,098
Average Persons per Acre	0.034	0.048	0.051	0.051
Average Persons per Household	3.067	3.085	3.00	3.07
Average Persons per Family	3.465	3.608	3.639	3.834
Males	13,058	20,018	20,861	20,716
Females	12,715	16,192	18,169	18,348



Race and Ethnicity Trends - Hendry

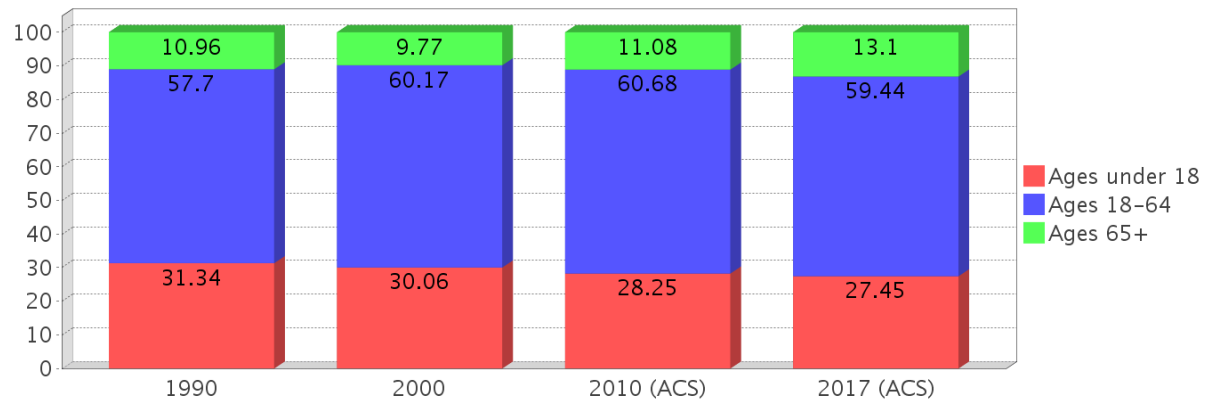
Description	1990	2000	2010 (ACS)	2017 (ACS)
White Alone	18,592 (72.14%)	24,123 (66.62%)	26,524 (67.96%)	30,341 (77.67%)
Black or African American Alone	4,311 (16.73%)	5,189 (14.33%)	5,874 (15.05%)	4,444 (11.38%)
Native Hawaiian and Other Pacific Islander Alone	(NA)	0 (0.00%)	0 (0.00%)	47 (0.12%)
Asian Alone	97 (0.38%)	224 (0.62%)	241 (0.62%)	342 (0.88%)
American Indian or Alaska Native Alone	543 (2.11%)	330 (0.91%)	161 (0.41%)	791 (2.02%)
Some Other Race Alone	2,228 (8.64%)	5,250 (14.50%)	5,647 (14.47%)	1,967 (5.04%)
Claimed 2 or More Races	(NA)	1,094 (3.02%)	583 (1.49%)	1,132 (2.90%)
Hispanic or Latino of Any Race	5,757 (22.34%)	14,259 (39.38%)	18,621 (47.71%)	20,258 (51.86%)
Not Hispanic or Latino	20,016 (77.66%)	21,951 (60.62%)	20,409 (52.29%)	18,806 (48.14%)
Minority	25,490 (98.90%)	20,167 (55.69%)	25,490 (65.31%)	25,965 (66.47%)



Age Trends - Hendry

Description	1990	2000	2010 (ACS)	2017 (ACS)
Under Age 5	8.98%	7.93%	8.14%	7.31%
Ages 5-17	22.36%	22.14%	20.11%	20.14%
Ages 18-21	6.00%	8.10%	7.32%	5.73%
Ages 22-29	12.19%	13.08%	11.42%	11.25%
Ages 30-39	14.66%	14.68%	13.63%	12.94%
Ages 40-49	11.64%	12.22%	14.16%	12.33%
Ages 50-64	13.20%	12.09%	14.15%	17.19%
Age 65 and Over	10.96%	9.77%	11.08%	13.10%
-Ages 65-74	6.79%	5.83%	6.39%	7.62%
-Ages 75-84	3.34%	3.11%	3.59%	3.96%
-Age 85 and Over	0.84%	0.83%	1.09%	1.53%
Median Age	NA	30	32	34

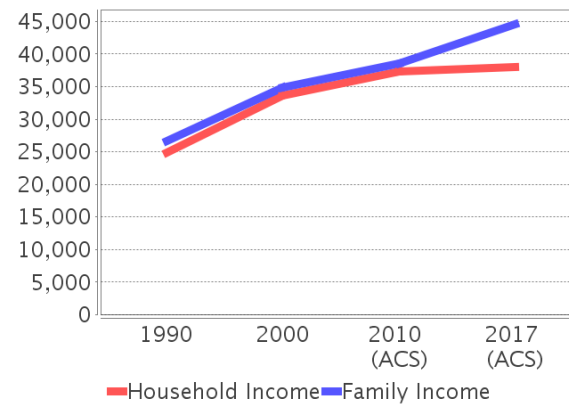
Percentage Population by Age Group - Hendry



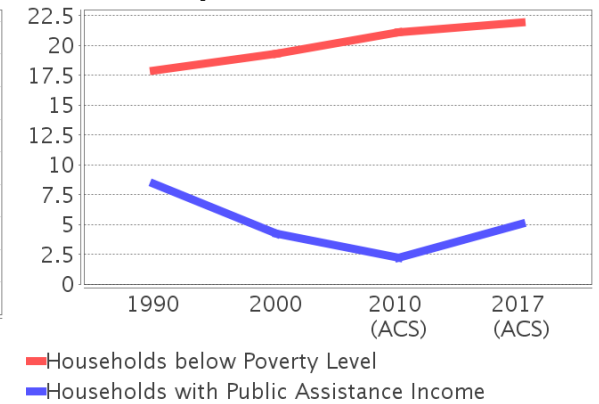
Income Trends - Hendry

Description	1990	2000	2010 (ACS)	2017 (ACS)
Median Household Income	\$24,904	\$33,592	\$37,298	\$37,966
Median Family Income	\$26,635	\$34,902	\$38,564	\$44,603
Population below Poverty Level	18.93%	24.15%	26.39%	25.48%
Households below Poverty Level	17.90%	19.30%	21.12%	21.92%
Households with Public Assistance Income	8.44%	4.27%	2.21%	5.08%

Income Trends



Poverty and Public Assistance



Disability Trends - Hendry

See the Data Sources section below for an explanation about the differences in disability data among the various years.

Description	1990	2000	2010 (ACS)	2017 (ACS)
Population 16 To 64 Years with a disability	1,586 (8.70%)	5,273 (16.53%)	NA (NA)	NA (NA)
Population 20 To 64 Years with a disability	NA (NA)	NA (NA)	NA (NA)	2,642 (12.28%)

Educational Attainment Trends - Hendry

Age 25 and Over

Description	1990	2000	2010 (ACS)	2017 (ACS)
Less than 9th Grade	3,335 (22.19%)	5,109 (24.86%)	5,221 (22.30%)	4,842 (19.85%)
9th to 12th Grade, No Diploma	3,187 (21.21%)	4,311 (20.98%)	3,669 (15.67%)	3,661 (15.01%)
High School Graduate or Higher	8,505 (56.60%)	11,131 (54.16%)	14,518 (62.02%)	15,894 (65.15%)
Bachelor's Degree or Higher	1,503 (10.00%)	1,695 (8.25%)	1,925 (8.22%)	2,061 (8.45%)

Language Trends - Hendry

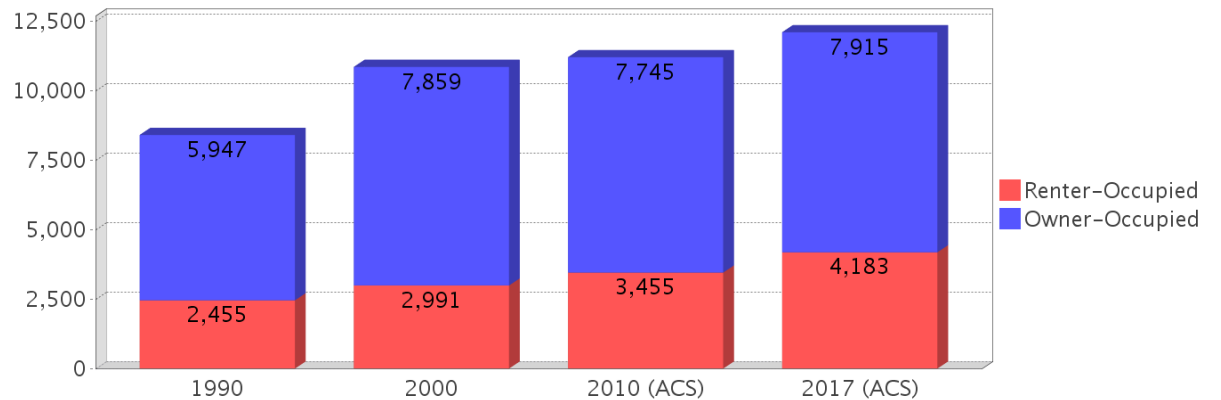
Age 5 and Over

Description	1990	2000	2010 (ACS)	2017 (ACS)
Speaks English Well	1,219 (5.17%)	2,159 (6.48%)	2,348 (6.55%)	2,672 (7.38%)
Speaks English Not Well	NA (NA)	2,434 (7.30%)	3,500 (9.76%)	2,965 (8.19%)
Speaks English Not at All	NA (NA)	2,795 (8.38%)	3,099 (8.64%)	2,467 (6.81%)
Speaks English Not Well or Not at All	1,854 (7.86%)	5,229 (15.68%)	6,599 (18.41%)	5,432 (15.00%)

Housing Trends - Hendry

Description	1990	2000	2010 (ACS)	2017 (ACS)
Total	9,945	12,294	14,268	14,670
Units per Acre	0.013	0.016	0.019	0.019
Single-Family Units	4,455	5,851	7,292	7,469
Multi-Family Units	542	1,005	1,364	1,066
Mobile Home Units	3,370	5,316	5,568	6,058
Owner-Occupied Units	5,947	7,859	7,745	7,915
Renter-Occupied Units	2,455	2,991	3,455	4,183
Vacant Units	1,543	1,444	3,068	2,572
Median Housing Value	\$60,000	\$56,600	\$117,300	\$79,700
Occupied Housing Units w/No Vehicle	740 (8.81%)	845 (7.79%)	826 (7.38%)	1,147 (9.48%)

Housing Tenure - Hendry



County Data Sources

Demographic data reported is from the U.S. Decennial Census (1990, 2000) and the American Community Survey (ACS) 5-year estimates from 2006-2010 and 2013-2017. The data was gathered at the county level. Depending on the dataset, the data represents 100% counts (Census Summary File 1) or sample-based information (Census Summary File 3 or ACS).

About the Census Data:

Use caution when comparing the 100% count data (Decennial Census) to the sample-based data (ACS). In any given year, about one in 40 or 2.5% of U.S. households will receive the ACS questionnaire. Over any five-year period, about one in eight households will receive the questionnaire, as compared to about one in six that received the long form questionnaire for the Decennial Census 2000. (Source: <http://mcdc.missouri.edu/pub/data/acs/Readme.shtml>) The U.S. Census Bureau provides help with this process:

<https://www.census.gov/programs-surveys/acs/guidance/comparing-acs-data/2017.html>

Use caution when interpreting changes in Race and Ethnicity over time. Starting with the 2000 Decennial Census, respondents were given a new option of selecting one or more race categories. Also in 2000, the placement of the question about Hispanic origin changed, helping to increase responsiveness to the Hispanic-origin question. Because of these and other changes, the 1990 data on race and ethnicity are not directly comparable with data from later censuses. (Source: <http://www.census.gov/prod/2001pubs/c2kbr01-1.pdf>;
<http://www.census.gov/pred/www/rpts/Race%20and%20Ethnicity%20FINAL%20report.pdf>)

The "Minority" calculations are derived from Census and ACS data using both the race and ethnicity responses. On this report, "Minority" refers to individuals who list a race other than White and/or list their ethnicity as Hispanic/Latino. In other words, people who are multi-racial, any single race other than White, or Hispanic/Latino of any race are considered minorities.

Disability data is not included in the 2010 Decennial Census, or the 2006-2010 ACS. This data is available in the 2013-2017 ACS.

Because of changes made to the Census and ACS questions between 1990 and 2017, disability variables should not be compared from year to year. For example: 1) With the 1990 data the disabilities are listed as a "work disability" while this distinction is not made with 2000 or 2017 ACS data; 2) The 2017 ACS data includes the institutionalized population (e.g. persons in prisons and group homes), while this population is not included in 1990 or 2000; 3) the age groupings changed over the years.

Please take the following two concerns into account when viewing this data: 1) With the 1990 data the disabilities are listed as a "work disability" while this distinction is not made with 2000 or 2017 ACS data; 2) The 2017 ACS data includes the institutionalized population (e.g. persons in prisons and group homes), while this population is not included in 1990 or 2000.

source:

<https://www.census.gov/people/disability/methodology/acs.html>

<https://www.census.gov/population/www/cen2000/90vs00/index.html>

The category Bachelor's Degree or Higher under the heading Educational Attainment Trends is a subset of the category High School Graduate or Higher.

Metadata

- Community and Fraternal Centers https://etdmpub.fl-a-etat.org/metadata/gc_communitycenter.htm
- Correctional Facilities in Florida https://etdmpub.fl-a-etat.org/metadata/gc_correctional.htm
- Cultural Centers in Florida https://etdmpub.fl-a-etat.org/metadata/gc_culturecenter.htm
- Fire Department and Rescue Station Facilities in Florida https://etdmpub.fl-a-etat.org/metadata/gc_firestat.htm
- Local, State, and Federal Government Buildings in Florida https://etdmpub.fl-a-etat.org/metadata/gc_govbuild.htm
- Florida Health Care Facilities https://etdmpub.fl-a-etat.org/metadata/gc_health.htm
- Hospital Facilities in Florida https://etdmpub.fl-a-etat.org/metadata/gc_hospitals.htm
- Law Enforcement Facilities in Florida https://etdmpub.fl-a-etat.org/metadata/gc_lawenforce.htm
- Florida Parks and Recreational Facilities https://etdmpub.fl-a-etat.org/metadata/gc_parks.htm
- Religious Centers https://etdmpub.fl-a-etat.org/metadata/gc_religion.htm
- Florida Public and Private Schools https://etdmpub.fl-a-etat.org/metadata/gc_schools.htm
- Social Service Centers https://etdmpub.fl-a-etat.org/metadata/gc_socialservice.htm
- Assisted Rental Housing Units in Florida https://etdmpub.fl-a-etat.org/metadata/gc_assisted_housing.htm
- Group Care Facilities <https://etdmpub.fl-a-etat.org/metadata/groupcare.htm>
- Mobile Home Parks in Florida https://etdmpub.fl-a-etat.org/metadata/gc_mobilehomes.htm
- Migrant Camps in Florida <https://etdmpub.fl-a-etat.org/metadata/migrant.htm>
- Veteran Organizations and Facilities https://etdmpub.fl-a-etat.org/metadata/gc_veterans.htm
- Generalized Land Use - Florida DOT District 1 https://etdmpub.fl-a-etat.org/metadata/d1_lu_gen.htm
- Census Block Groups in Florida https://etdmpub.fl-a-etat.org/metadata/e2_cenacs_cci.htm
- 1990 Census Block Groups in Florida https://etdmpub.fl-a-etat.org/metadata/e2_cenblkgrp_1990_cci.htm
- 2000 Census Block Groups in Florida https://etdmpub.fl-a-etat.org/metadata/e2_cenblkgrp_2000_cci.htm
- 2010 Census Block Groups in Florida https://etdmpub.fl-a-etat.org/metadata/e2_cenblkgrp_2010_cci.htm