

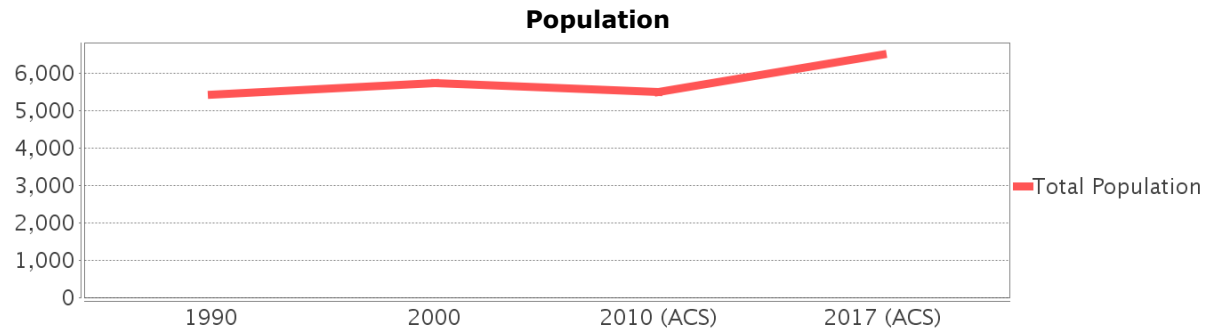
Sociocultural Data Report

Fort Myers Shores

Area: 2.543 square miles
Jurisdiction(s): Cities: NA
 Counties: Lee

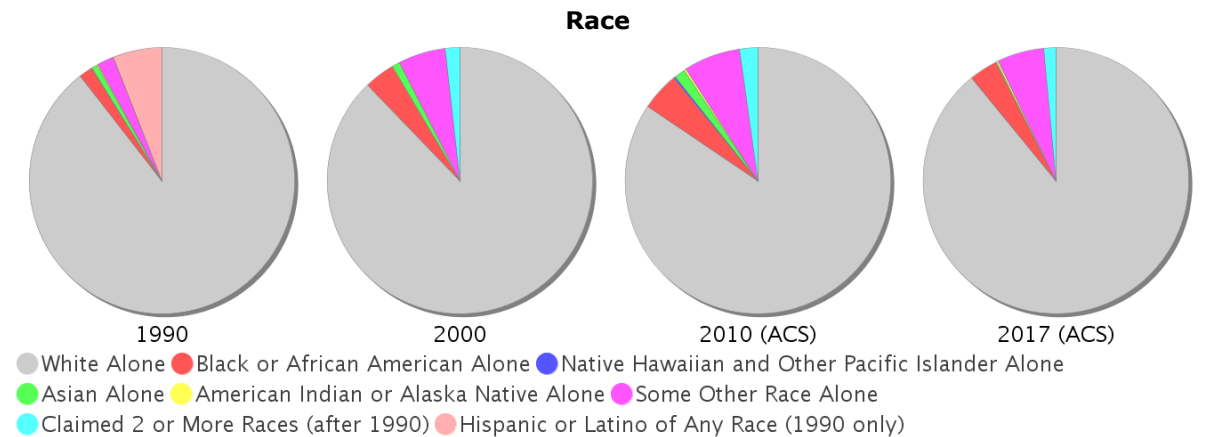
General Population Trends

Description	1990	2000	2010 (ACS)	2017 (ACS)
Total Population	5,433	5,746	5,487	6,496
Total Households	1,979	2,174	2,167	2,196
Average Persons per Acre	2.91	3.02	3.05	3.38
Average Persons per Household	2.62	2.61	2.38	2.67
Average Persons per Family	2.98	3.09	2.88	3.26
Males	2,641	2,783	2,717	3,442
Females	2,793	2,963	2,770	3,054

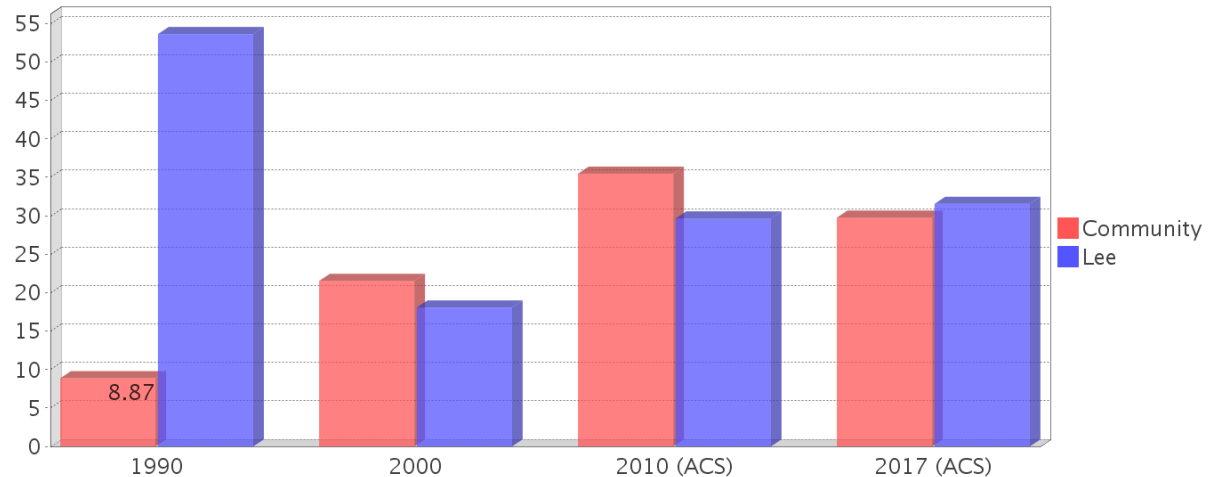


Race and Ethnicity Trends

Description	1990	2000	2010 (ACS)	2017 (ACS)
White Alone	5,168 (95.12%)	5,043 (87.77%)	4,631 (84.40%)	5,784 (89.04%)
Black or African American Alone	97 (1.79%)	213 (3.71%)	257 (4.68%)	226 (3.48%)
Native Hawaiian and Other Pacific Islander Alone	2 (0.04%)	0 (0.00%)	11 (0.20%)	0 (0.00%)
Asian Alone	39 (0.72%)	56 (0.97%)	72 (1.31%)	5 (0.08%)
American Indian or Alaska Native Alone	9 (0.17%)	0 (0.00%)	14 (0.26%)	15 (0.23%)
Some Other Race Alone	119 (2.19%)	333 (5.80%)	380 (6.93%)	370 (5.70%)
Claimed 2 or More Races	NA (NA)	101 (1.76%)	122 (2.22%)	96 (1.48%)
Hispanic or Latino of Any Race	344 (6.33%)	876 (15.25%)	1,535 (27.98%)	1,476 (22.72%)
Not Hispanic or Latino	5,089 (93.67%)	4,870 (84.75%)	3,952 (72.02%)	5,020 (77.28%)
Minority	482 (8.87%)	1,237 (21.53%)	1,947 (35.48%)	1,933 (29.76%)



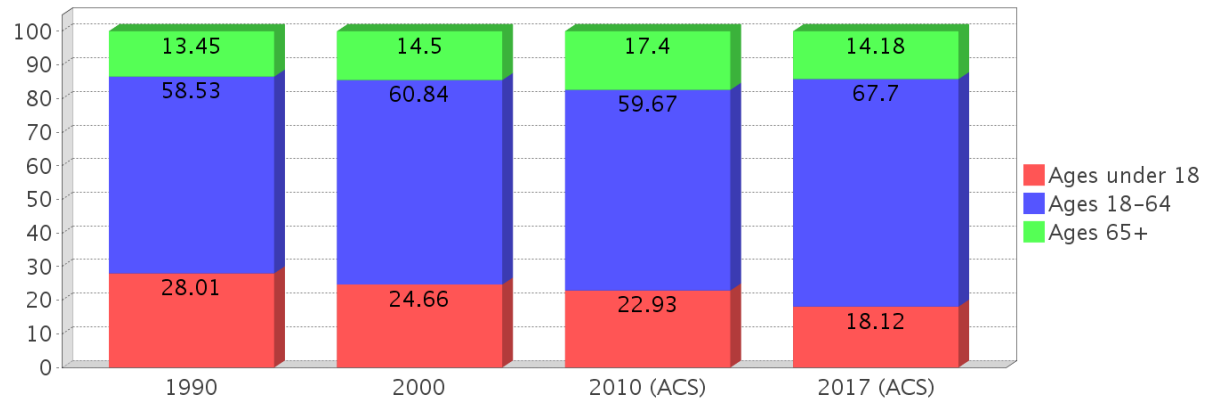
Minority Percentage Population



Age Trends

Description	1990	2000	2010 (ACS)	2017 (ACS)
Under Age 5	6.64%	6.06%	6.14%	5.80%
Ages 5-17	21.37%	18.60%	16.79%	12.32%
Ages 18-21	4.99%	4.40%	4.70%	3.45%
Ages 22-29	10.55%	9.15%	9.64%	9.21%
Ages 30-39	17.01%	12.18%	10.95%	14.59%
Ages 40-49	12.28%	16.36%	13.94%	12.88%
Ages 50-64	13.71%	18.74%	20.43%	27.57%
Age 65 and Over	13.45%	14.50%	17.40%	14.18%
-Ages 65-74	8.41%	8.51%	10.13%	7.67%
-Ages 75-84	4.12%	4.35%	5.63%	6.13%
-Age 85 and Over	0.92%	1.64%	1.64%	0.38%
Median Age	NA	39	47	43

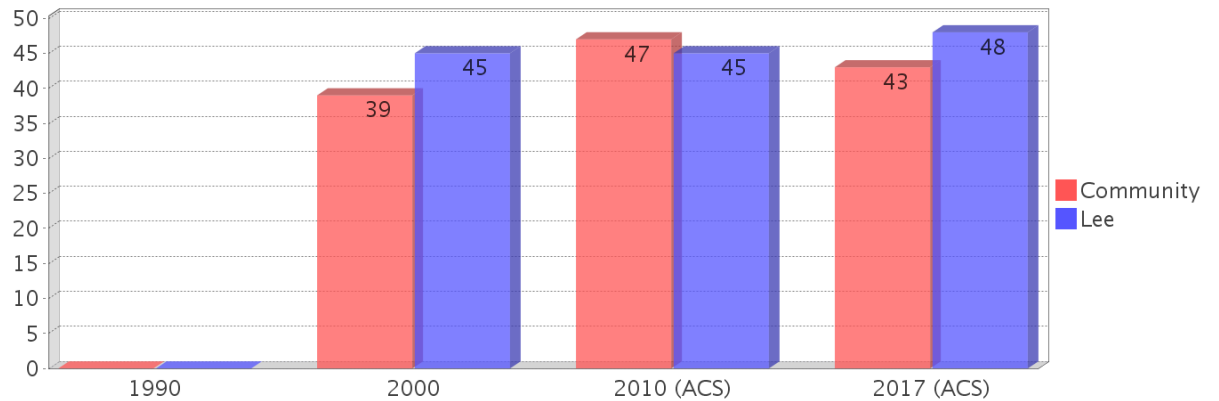
Percentage Population by Age Group



Income Trends

Description	1990	2000	2010 (ACS)	2017 (ACS)
Median Household Income	\$30,698	\$35,695	\$50,116	\$45,766
Median Family Income	\$31,548	\$40,182	\$55,337	\$61,232
Population below Poverty Level	5.85%	8.18%	20.54%	10.84%
Households below Poverty Level	6.42%	6.90%	19.20%	12.98%
Households with Public Assistance Income	4.80%	2.12%	2.45%	4.60%

Median Age Comparison

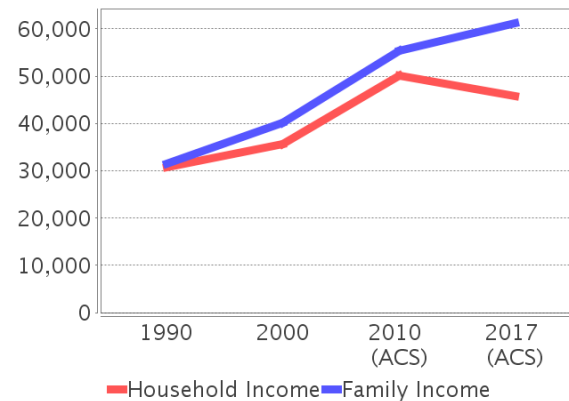


Disability Trends

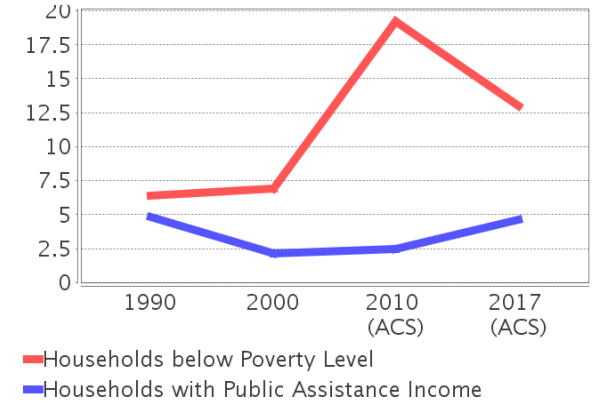
See the Data Sources section below for an explanation about the differences in disability data among the various years.

Description	1990	2000	2010 (ACS)	2017 (ACS)
Population 16 To 64 Years with a disability	293 (7.15%)	688 (12.75%)	(NA)	(NA)
Population 20 To 64 Years with a disability	(NA)	(NA)	(NA)	531 (12.36%)

Income Trends



Poverty and Public Assistance



Educational Attainment Trends

Age 25 and Over

Description	1990	2000	2010 (ACS)	2017 (ACS)
Less than 9th Grade	221 (6.34%)	281 (7.37%)	177 (4.75%)	377 (7.82%)
9th to 12th Grade, No Diploma	574 (16.46%)	678 (17.79%)	626 (16.80%)	556 (11.53%)
High School Graduate or Higher	2,694 (77.24%)	2,853 (74.84%)	2,923 (78.45%)	3,888 (80.65%)
Bachelor's Degree or Higher	348 (9.98%)	494 (12.96%)	382 (10.25%)	670 (13.90%)

Language Trends

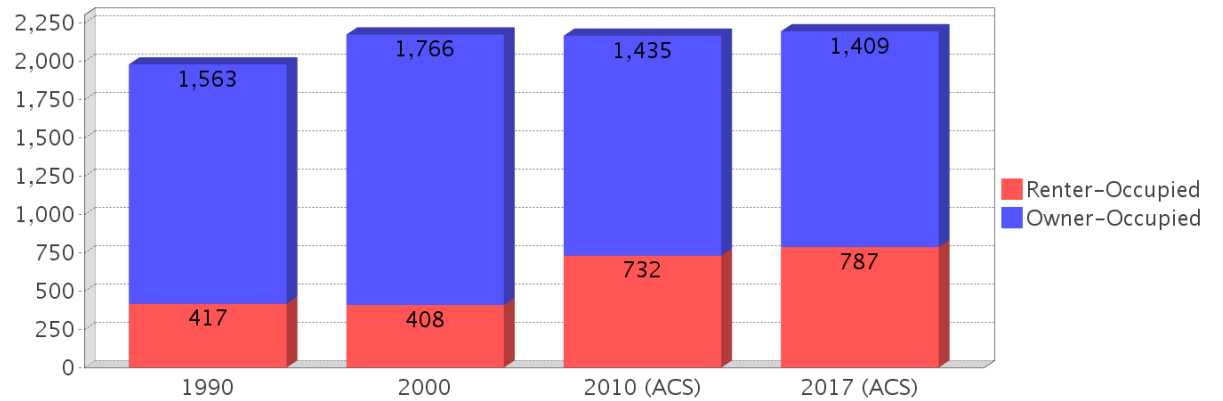
Age 5 and Over

Description	1990	2000	2010 (ACS)	2017 (ACS)
Speaks English Well	82 (1.62%)	139 (2.58%)	474 (9.54%)	265 (4.33%)
Speaks English Not Well	NA (NA)	129 (2.39%)	122 (2.46%)	221 (3.61%)
Speaks English Not at All	NA (NA)	64 (1.19%)	195 (3.93%)	36 (0.59%)
Speaks English Not Well or Not at All	28 (0.55%)	193 (3.58%)	317 (6.38%)	257 (4.20%)

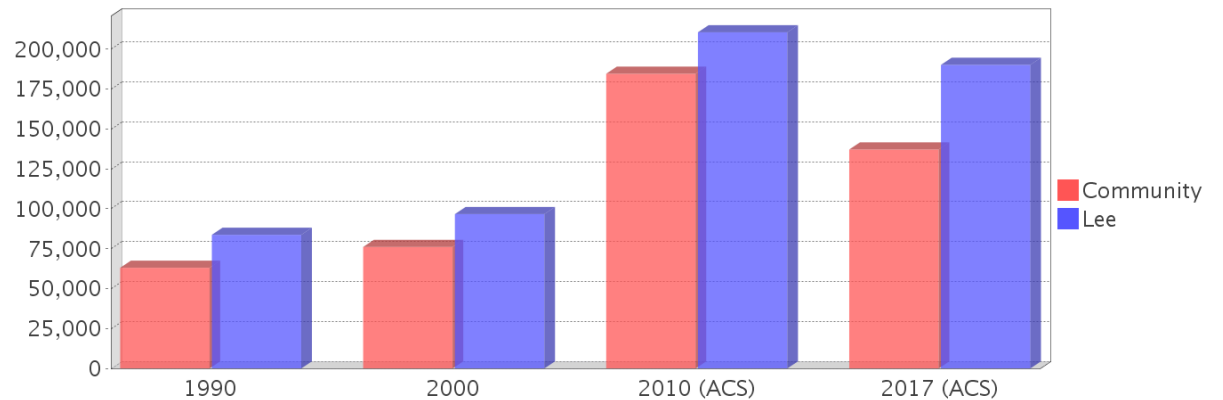
Housing Trends

Description	1990	2000	2010 (ACS)	2017 (ACS)
Total	2,186	2,375	2,588	2,647
Units per Acre	1.60	1.73	1.95	2.00
Single-Family Units	1,686	1,993	2,449	2,185
Multi-Family Units	244	301	386	402
Mobile Home Units	45	81	27	60
Owner-Occupied Units	1,563	1,766	1,435	1,409
Renter-Occupied Units	417	408	732	787
Vacant Units	206	201	421	451
Median Housing Value	\$63,050	\$76,100	\$184,600	\$137,150
Occupied Housing Units w/No Vehicle	44 (2.22%)	96 (4.42%)	129 (5.95%)	80 (3.64%)

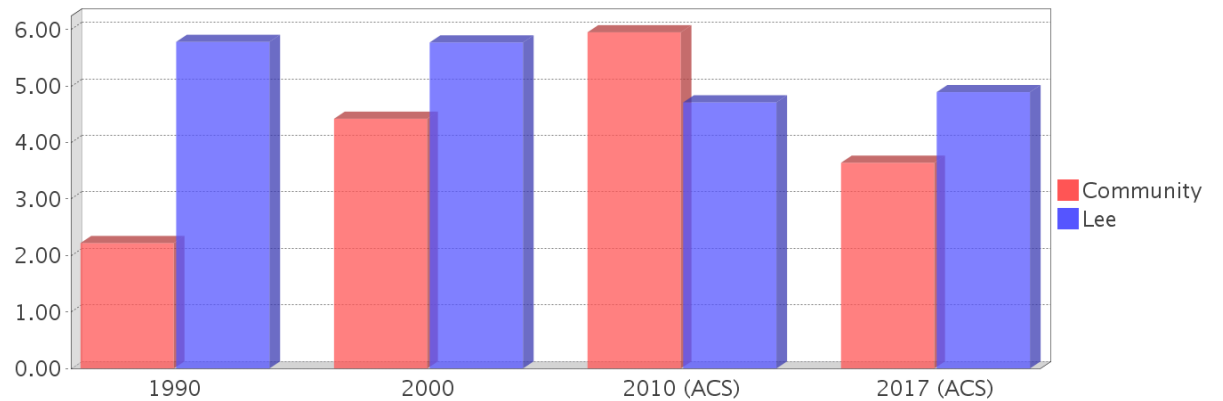
Housing Tenure



Median Housing Value Comparison

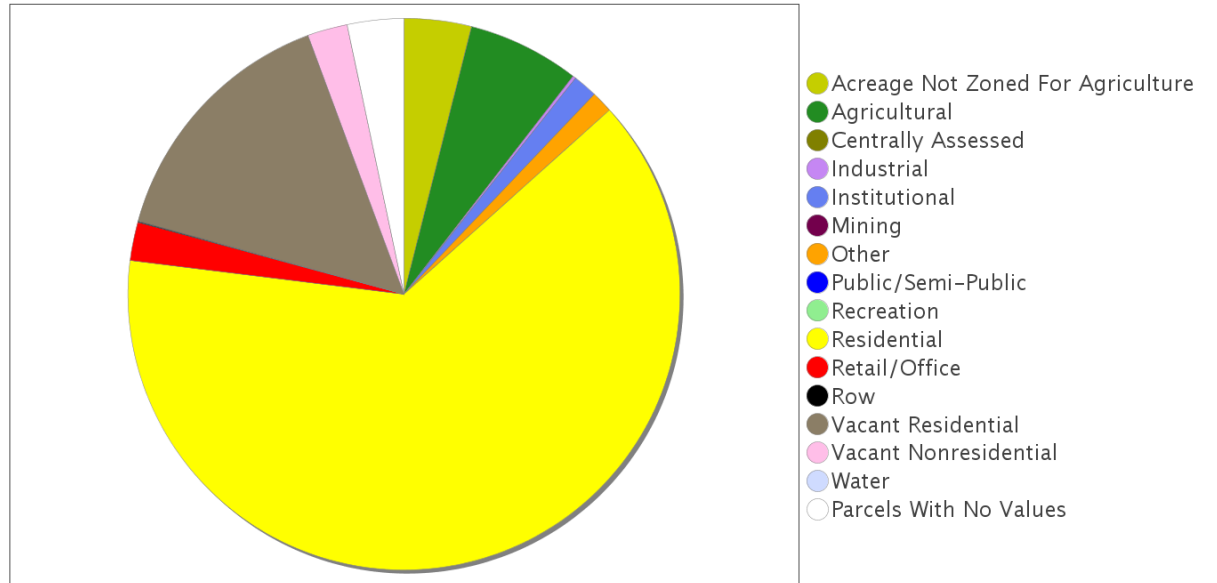


Occupied Units With No Vehicles Available



Existing Land Use

Land Use Type	Acres	Percentage
Acreage Not Zoned For Agriculture	44	2.70%
Agricultural	73	4.49%
Centrally Assessed	0	0.00%
Industrial	2	0.12%
Institutional	16	0.98%
Mining	0	0.00%
Other	14	0.86%
Public/Semi-Public	<0.5	<0.03%
Recreation	0	0.00%
Residential	709	43.57%
Retail/Office	25	1.54%
Row	1	0.06%
Vacant Residential	168	10.32%
Vacant Nonresidential	26	1.60%
Water	0	0.00%
Parcels With No Values	37	2.27%



Location Maps



Community Facilities

The community facilities information below is useful in a variety of ways for environmental evaluations. These community resources should be evaluated for potential sociocultural effects, such as accessibility and relocation potential. The facility types may indicate the types of population groups present in the project study area. Facility staff and leaders can be sources of community information such as who uses the facility and how it is used. Additionally, community facilities are potential public meeting venues.

Florida Parks and Recreational Facilities (Points)

Facility Name	Address	Zip Code
BARBADOS PARK	2175 BARBADOS AVE	33905
DAVIS BLVD BOAT RAMP	2227 DAVIS BLVD	33905
SHORES NATURE TRAIL PARK FT MYERS	13108 5TH ST	33905
CARIBBEAN PARK	13498 CARIBBEAN BLVD	33905

Healthcare Facilities (Geocoded)

Facility Name	Address	Zip Code
21ST CENTURY ONCOLOGY, LLC DBA FLORIDA UROLOGY PH	13214 PALM BEACH BOULEVARD	33905
MILLENNIUM PHYSICIAN GROUP, LLC	13214 PALM BEACH BOULEVARD	33905

Religious Centers (Points)

Facility Name	Address	Zip Code
BETHLEHEM LUTHERAN CHURCH LCMS	14531 OLD OLGA ROAD	33905
GRACE CHURCH OLGA-FT MYERS	14036 MATANZAS DRIVE	33905

US Census Places

Facility Name
Olga
Fort Myers Shores

Block Groups

The following Census Block Groups were used to calculate demographics for this report.

1990 Census Block Groups

120710302002, 120710302005, 120710302001, 120710302003, 120710302007, 120710302006, 120710302004

2000 Census Block Groups

120710302006, 120710302007, 120710302005, 120710302002, 120710302003, 120710302001, 120710302004

2010 Census Block Groups

120710302025, 120710302031, 120710302023, 120710302021, 120710302024, 120710302022, 120710302041, 120710302042

2017 Census Block Groups

120710302022, 120710302024, 120710302031, 120710302021, 120710302042, 120710302041, 120710302025, 120710302023

Data Sources

Area

The geographic area of the community based on a user-specified community boundary or area of interest (AOI) boundary.

Jurisdiction

Jurisdiction(s) includes local government boundaries that intersect the community or AOI boundary.

Demographic Data

Demographic data reported under the headings General Population Trends, Race and Ethnicity Trends, Age Trends, Income Trends, Educational Attainment Trends, Language Trends, and Housing Trends is from the U.S. Decennial Census (1990, 2000) and the American Community Survey (ACS) 5-year estimates from 2006-2010 and 2013-2017. The data was gathered at the block group level for user-specified community boundaries and AOIs, and at the county level for counties. Depending on the dataset, the data represents 100% counts (Census Summary File 1) or sample-based information (Census Summary File 3 or ACS).

About the Census Data:

User-specified community boundaries and AOIs do not always correspond precisely to block group boundaries. In these instances, adjustment of the geographic area and data for affected block groups is required to estimate the actual population. To improve the accuracy of such estimates in the SDR report, the census block group data was adjusted to exclude all census blocks with a population of two or fewer. These areas were eliminated from the corresponding years' block groups. Next, the portion of the block group that lies outside of the community or AOI boundary was removed. The demographics within each block group were then recalculated, assuming an equal area distribution of the population. Note that there may be areas where there is no population.

Use caution when comparing the 100% count data (Decennial Census) to the sample-based data (ACS). In any given year, about one in 40 or 2.5% of U.S. households will receive the ACS questionnaire. Over any five-year period, about one in eight households will receive the questionnaire, as compared to about one in six that received the long form questionnaire for the Decennial Census 2000. (Source: <http://mcdc.missouri.edu/pub/data/acs/Readme.shtml>) The U.S.

Census Bureau provides help with this process:

<https://www.census.gov/programs-surveys/acs/guidance/comparing-acs-data/2017.html>

Use caution when interpreting changes in Race and Ethnicity over time. Starting with the 2000 Decennial Census, respondents were given a new option of selecting one or more race categories. Also in 2000, the placement of the question about Hispanic origin changed, helping to increase responsiveness to the Hispanic-origin question. Because of these and other changes, the 1990 data on race and ethnicity are not directly comparable with data from later censuses. (Source: <http://www.census.gov/prod/2001pubs/c2kbr01-1.pdf>;
<http://www.census.gov/pred/www/rpts/Race%20and%20Ethnicity%20FINAL%20report.pdf>)

The "Minority" calculations are derived from Census and ACS data using both the race and ethnicity responses. On this report, "Minority" refers to individuals who list a race other than White and/or list their ethnicity as Hispanic/Latino. In other words, people who are multi-racial, any single race other than White, or Hispanic/Latino of any race are considered minorities.

Disability data is not included in the 2010 Decennial Census, or the 2006-2010 ACS. This data is available in the 2013-2017 ACS.

Because of changes made to the Census and ACS questions between 1990 and 2017, disability variables should not be compared from year to year. For example: 1) With the 1990 data the disabilities are listed as a "work disability" while this distinction is not made with 2000 or 2017 ACS data; 2) The 2017 ACS data includes the institutionalized population (e.g. persons in prisons and group homes), while this population is not included in 1990 or 2000; 3) the age groupings changed over the years.

Please take the following two concerns into account when viewing this data: 1) With the 1990 data the disabilities are listed as a "work disability" while this distinction is not made with 2000 or 2017 ACS data; 2) The 2017 ACS data includes the institutionalized population (e.g. persons in prisons and group homes), while this population is not included in 1990 or 2000.

The category Bachelor's Degree or Higher under the heading Educational Attainment Trends is a subset of the category High School Graduate or Higher.

Income of households. This includes the income of the householder and all other individuals 15 years old and over in the household, whether they are related to the householder or not. Because many households consist of only one person, average household income is usually less than average family income.

Income of families. In compiling statistics on family income, the incomes of all members 15 years old and over related to the householder are summed and treated as a single amount.

Age Trends median age for 1990 is not available.

Land Use Data

The Land Use information Indicates acreages and percentages for the generalized land use types used to group parcel-specific, existing land use assigned by the county property appraiser office according to the Florida Department of Revenue land use codes.

Community Facilities Data

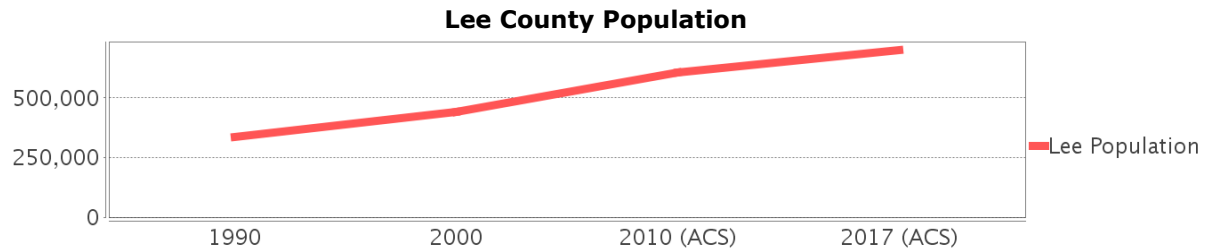
- Assisted Rental Housing Units - Identifies multifamily rental developments that receive funding assistance under federal, state, and local government programs to offer affordable housing as reported by the Shimberg Center for Housing Studies, University of Florida.
- Mobile Home Parks - Identifies approved or acknowledged mobile home parks reported by the Florida Department of Business and Professional Regulation and Florida Department of Health.

- Migrant Camps - Identifies migrant labor camp facilities inspected by the Florida Department of Health.
- Group Care Facilities - Identifies group care facilities inspected by the Florida Department of Health.
- Community Center and Fraternal Association Facilities - Identifies facilities reported by multiple sources.
- Law Enforcement Correctional Facilities - Identifies facilities reported by multiple sources.
- Cultural Centers - Identifies cultural centers including organizations, buildings, or complexes that promote culture and arts (e.g., aquariums and zoological facilities; arboreta and botanical gardens; dinner theaters; drive-ins; historical places and services; libraries; motion picture theaters; museums and art galleries; performing arts centers; performing arts theaters; planetariums; studios and art galleries; and theater producers stage facilities) reported by multiple sources.
- Fire Department and Rescue Station Facilities - Identifies facilities reported by multiple sources.
- Government Buildings - Identifies local, state, and federal government buildings reported by multiple sources.
- Health Care Facilities - Identifies health care facilities including abortion clinics, dialysis clinics, medical doctors, nursing homes, osteopaths, state laboratories/clinics, and surgicenters/walk-in clinics reported by the Florida Department of Health.
- Hospital Facilities - Identifies hospital facilities reported by multiple sources.
- Law Enforcement Facilities - Identifies law enforcement facilities reported by multiple sources.
- Parks and Recreational Facilities - Identifies parks and recreational facilities reported by multiple sources.
- Religious Center Facilities - Identifies religious centers including churches, temples, synagogues, mosques, chapels, centers, and other types of religious facilities reported by multiple sources.
- Private and Public Schools - Identifies private and public schools reported by multiple sources.
- Social Service Centers - Identifies social service centers reported by multiple sources.
- Veteran Organizations and Facilities

Lee County Demographic Profile

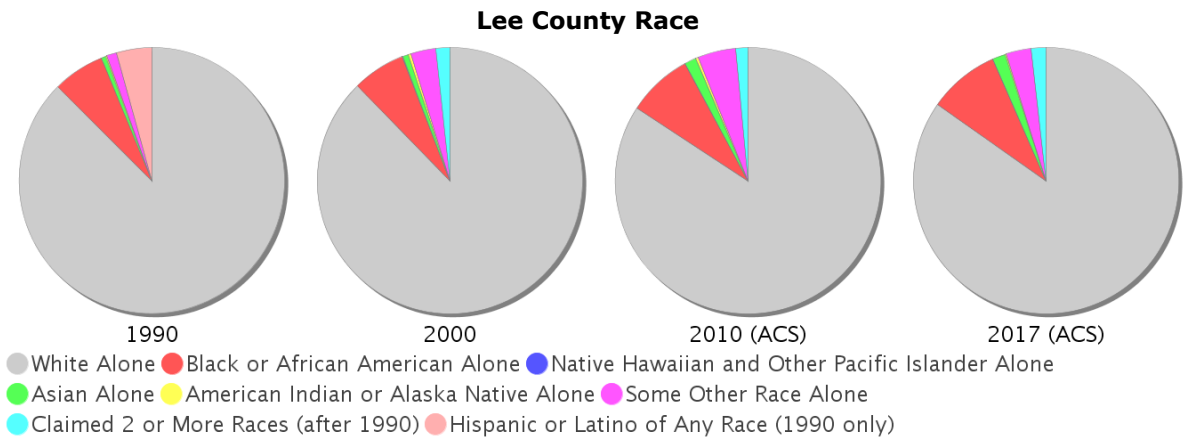
General Population Trends - Lee

Description	1990	2000	2010 (ACS)	2017 (ACS)
Total Population	335,113	440,888	606,165	700,165
Total Households	140,124	188,599	245,751	264,325
Average Persons per Acre	0.641	0.82	1.128	1.302
Average Persons per Household	2.392	2.306	2.00	2.61
Average Persons per Family	2.802	2.809	3.012	3.28
Males	161,917	215,618	298,205	342,731
Females	173,196	225,270	307,960	357,434



Race and Ethnicity Trends - Lee

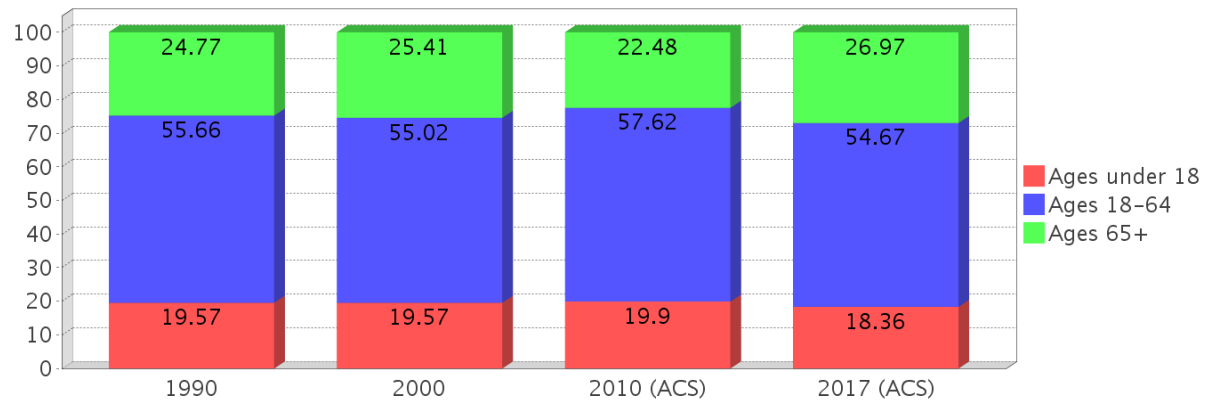
Description	1990	2000	2010 (ACS)	2017 (ACS)
White Alone	306,200 (91.37%)	386,502 (87.66%)	510,405 (84.20%)	593,227 (84.73%)
Black or African American Alone	22,184 (6.62%)	28,570 (6.48%)	48,208 (7.95%)	60,664 (8.66%)
Native Hawaiian and Other Pacific Islander Alone	(NA)	238 (0.05%)	86 (0.01%)	382 (0.05%)
Asian Alone	1,820 (0.54%)	3,159 (0.72%)	8,528 (1.41%)	10,856 (1.55%)
American Indian or Alaska Native Alone	672 (0.20%)	1,340 (0.30%)	1,620 (0.27%)	1,246 (0.18%)
Some Other Race Alone	4,163 (1.24%)	13,489 (3.06%)	28,409 (4.69%)	21,277 (3.04%)
Claimed 2 or More Races	(NA)	7,590 (1.72%)	8,909 (1.47%)	12,513 (1.79%)
Hispanic or Latino of Any Race	15,094 (4.50%)	41,993 (9.52%)	106,696 (17.60%)	141,544 (20.22%)
Not Hispanic or Latino	320,019 (95.50%)	398,895 (90.48%)	499,469 (82.40%)	558,621 (79.78%)
Minority	179,706 (53.63%)	79,629 (18.06%)	179,706 (29.65%)	220,915 (31.55%)



Age Trends - Lee

Description	1990	2000	2010 (ACS)	2017 (ACS)
Under Age 5	5.95%	5.24%	5.57%	4.81%
Ages 5-17	13.62%	14.33%	14.33%	13.54%
Ages 18-21	4.08%	3.48%	4.56%	4.16%
Ages 22-29	10.22%	7.51%	8.64%	8.48%
Ages 30-39	13.70%	12.49%	11.14%	10.42%
Ages 40-49	10.99%	12.99%	12.93%	11.18%
Ages 50-64	16.67%	18.55%	20.35%	20.44%
Age 65 and Over	24.77%	25.41%	22.48%	26.97%
-Ages 65-74	15.35%	13.74%	12.30%	15.17%
-Ages 75-84	7.72%	9.23%	7.52%	8.59%
-Age 85 and Over	1.71%	2.44%	2.66%	3.22%
Median Age	NA	45	45	48

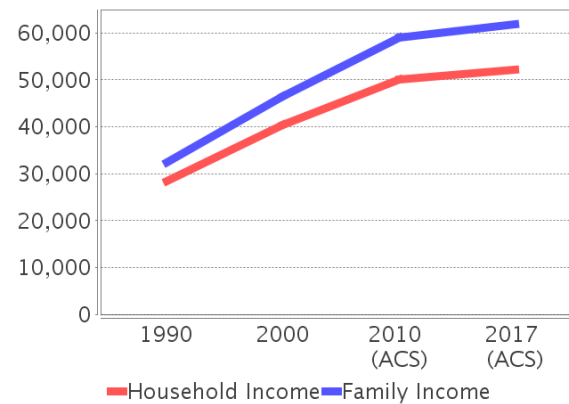
Percentage Population by Age Group - Lee



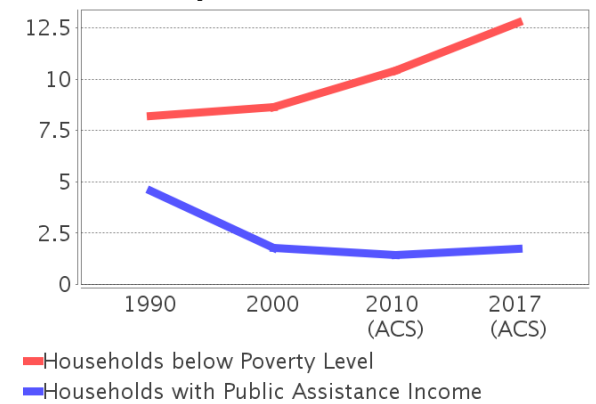
Income Trends - Lee

Description	1990	2000	2010 (ACS)	2017 (ACS)
Median Household Income	\$28,448	\$40,319	\$50,014	\$52,052
Median Family Income	\$32,310	\$46,430	\$58,950	\$61,847
Population below Poverty Level	9.16%	9.73%	12.05%	14.87%
Households below Poverty Level	8.22%	8.64%	10.40%	12.75%
Households with Public Assistance Income	4.56%	1.75%	1.42%	1.72%

Income Trends



Poverty and Public Assistance



Disability Trends - Lee

See the Data Sources section below for an explanation about the differences in disability data among the various years.

Description	1990	2000	2010 (ACS)	2017 (ACS)
Population 16 To 64 Years with a disability	18,191 (6.67%)	51,238 (12.39%)	NA (NA)	NA (NA)
Population 20 To 64 Years with a disability	NA (NA)	NA (NA)	NA (NA)	36,484 (10.02%)

Educational Attainment Trends - Lee

Age 25 and Over

Description	1990	2000	2010 (ACS)	2017 (ACS)
Less than 9th Grade	17,582 (7.16%)	16,393 (5.00%)	21,284 (4.84%)	27,749 (5.32%)
9th to 12th Grade, No Diploma	39,144 (15.94%)	41,627 (12.70%)	37,304 (8.49%)	38,288 (7.34%)
High School Graduate or Higher	188,833 (76.90%)	269,652 (82.29%)	380,870 (86.67%)	455,532 (87.34%)
Bachelor's Degree or Higher	40,392 (16.45%)	69,153 (21.10%)	108,286 (24.64%)	142,016 (27.23%)

Language Trends - Lee

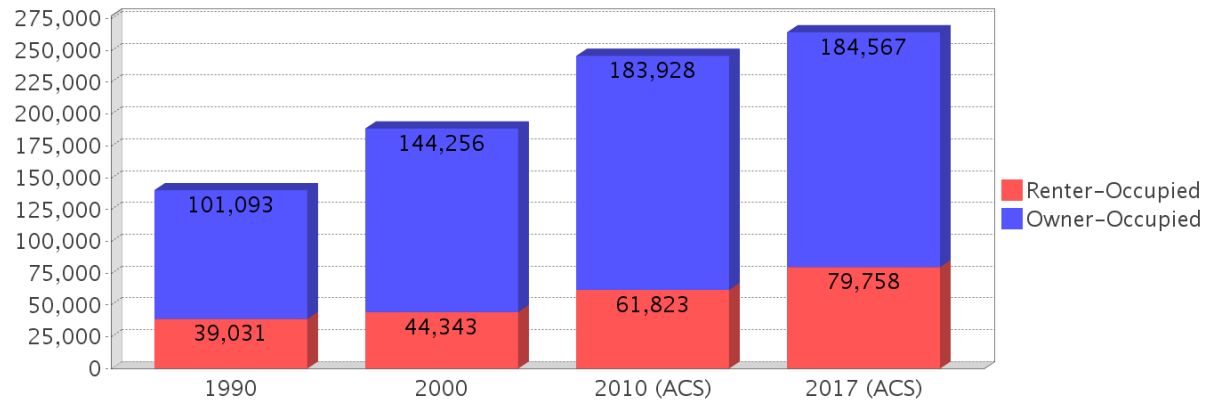
Age 5 and Over

Description	1990	2000	2010 (ACS)	2017 (ACS)
Speaks English Well	5,168 (1.64%)	10,843 (2.60%)	26,023 (4.55%)	25,271 (3.79%)
Speaks English Not Well	NA (NA)	9,080 (2.17%)	22,205 (3.88%)	20,999 (3.15%)
Speaks English Not at All	NA (NA)	4,501 (1.08%)	11,028 (1.93%)	16,443 (2.47%)
Speaks English Not Well or Not at All	3,752 (1.19%)	13,581 (3.25%)	33,233 (5.81%)	37,442 (5.62%)

Housing Trends - Lee

Description	1990	2000	2010 (ACS)	2017 (ACS)
Total	189,051	245,405	363,892	383,224
Units per Acre	0.361	0.457	0.677	0.713
Single-Family Units	82,598	134,511	219,692	238,495
Multi-Family Units	35,495	70,952	103,959	106,749
Mobile Home Units	20,936	38,084	39,641	37,452
Owner-Occupied Units	101,093	144,256	183,928	184,567
Renter-Occupied Units	39,031	44,343	61,823	79,758
Vacant Units	48,927	56,806	118,141	118,899
Median Housing Value	\$83,700	\$96,700	\$210,600	\$190,200
Occupied Housing Units w/No Vehicle	8,105 (5.78%)	10,873 (5.77%)	11,565 (4.71%)	12,930 (4.89%)

Housing Tenure - Lee



County Data Sources

Demographic data reported is from the U.S. Decennial Census (1990, 2000) and the American Community Survey (ACS) 5-year estimates from 2006-2010 and 2013-2017. The data was gathered at the county level. Depending on the dataset, the data represents 100% counts (Census Summary File 1) or sample-based information (Census Summary File 3 or ACS).

About the Census Data:

Use caution when comparing the 100% count data (Decennial Census) to the sample-based data (ACS). In any given year, about one in 40 or 2.5% of U.S. households will receive the ACS questionnaire. Over any five-year period, about one in eight households will receive the questionnaire, as compared to about one in six that received the long form questionnaire for the Decennial Census 2000. (Source: <http://mcdc.missouri.edu/pub/data/acs/Readme.shtml>) The U.S. Census Bureau provides help with this process:

<https://www.census.gov/programs-surveys/acs/guidance/comparing-acs-data/2017.html>

Use caution when interpreting changes in Race and Ethnicity over time. Starting with the 2000 Decennial Census, respondents were given a new option of selecting one or more race categories. Also in 2000, the placement of the question about Hispanic origin changed, helping to increase responsiveness to the Hispanic-origin question. Because of these and other changes, the 1990 data on race and ethnicity are not directly comparable with data from later censuses. (Source: <http://www.census.gov/prod/2001pubs/c2kbr01-1.pdf>; <http://www.census.gov/pred/www/rpts/Race%20and%20Ethnicity%20FINAL%20report.pdf>)

The "Minority" calculations are derived from Census and ACS data using both the race and ethnicity responses. On this report, "Minority" refers to individuals who list a race other than White and/or list their ethnicity as Hispanic/Latino. In other words, people who are multi-racial, any single race other than White, or Hispanic/Latino of any race are considered minorities.

Disability data is not included in the 2010 Decennial Census, or the 2006-2010 ACS. This data is available in the 2013-2017 ACS.

Because of changes made to the Census and ACS questions between 1990 and 2017, disability variables should not be compared from year to year. For example: 1) With the 1990 data the disabilities are listed as a "work disability" while this distinction is not made with 2000 or 2017 ACS data; 2) The 2017 ACS data includes the institutionalized population (e.g. persons in prisons and group homes), while this population is not included in 1990 or 2000; 3) the age groupings changed over the years.

Please take the following two concerns into account when viewing this data: 1) With the 1990 data the disabilities are listed as a "work disability" while this distinction is not made with 2000 or 2017 ACS data; 2) The 2017 ACS data includes the institutionalized population (e.g. persons in prisons and group homes), while this population is not included in 1990 or 2000.

source:

<https://www.census.gov/people/disability/methodology/acs.html>

<https://www.census.gov/population/www/cen2000/90vs00/index.html>

The category Bachelor's Degree or Higher under the heading Educational Attainment Trends is a subset of the category High School Graduate or Higher.

Metadata

- Community and Fraternal Centers https://etdmpub.florida-et.org/metadata/gc_communitycenter.htm
- Correctional Facilities in Florida https://etdmpub.florida-et.org/metadata/gc_correctional.htm
- Cultural Centers in Florida https://etdmpub.florida-et.org/metadata/gc_culturecenter.htm
- Fire Department and Rescue Station Facilities in Florida https://etdmpub.florida-et.org/metadata/gc_firestat.htm
- Local, State, and Federal Government Buildings in Florida https://etdmpub.florida-et.org/metadata/gc_govbuild.htm
- Florida Health Care Facilities https://etdmpub.florida-et.org/metadata/gc_health.htm
- Hospital Facilities in Florida https://etdmpub.florida-et.org/metadata/gc_hospitals.htm
- Law Enforcement Facilities in Florida https://etdmpub.florida-et.org/metadata/gc_lawenforce.htm
- Florida Parks and Recreational Facilities https://etdmpub.florida-et.org/metadata/gc_parks.htm
- Religious Centers https://etdmpub.florida-et.org/metadata/gc_religion.htm
- Florida Public and Private Schools https://etdmpub.florida-et.org/metadata/gc_schools.htm
- Social Service Centers https://etdmpub.florida-et.org/metadata/gc_socialservice.htm
- Assisted Rental Housing Units in Florida https://etdmpub.florida-et.org/metadata/gc_assisted_housing.htm
- Group Care Facilities <https://etdmpub.florida-et.org/metadata/groupcare.htm>
- Mobile Home Parks in Florida https://etdmpub.florida-et.org/metadata/gc_mobilehomes.htm
- Migrant Camps in Florida <https://etdmpub.florida-et.org/metadata/migrant.htm>
- Veteran Organizations and Facilities https://etdmpub.florida-et.org/metadata/gc_veterans.htm
- Generalized Land Use - Florida DOT District 1 https://etdmpub.florida-et.org/metadata/d1_lu_gen.htm
- Census Block Groups in Florida https://etdmpub.florida-et.org/metadata/e2_cenacs_cci.htm
- 1990 Census Block Groups in Florida https://etdmpub.florida-et.org/metadata/e2_cenblkgrp_1990_cci.htm
- 2000 Census Block Groups in Florida https://etdmpub.florida-et.org/metadata/e2_cenblkgrp_2000_cci.htm
- 2010 Census Block Groups in Florida https://etdmpub.florida-et.org/metadata/e2_cenblkgrp_2010_cci.htm