

Sociocultural Data Report

Fussels Corner

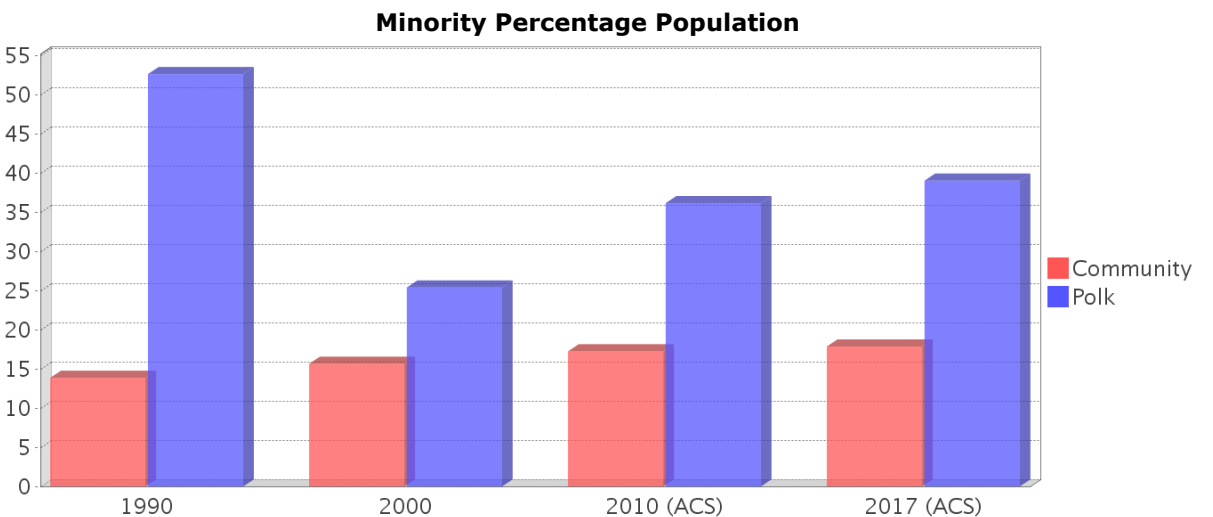
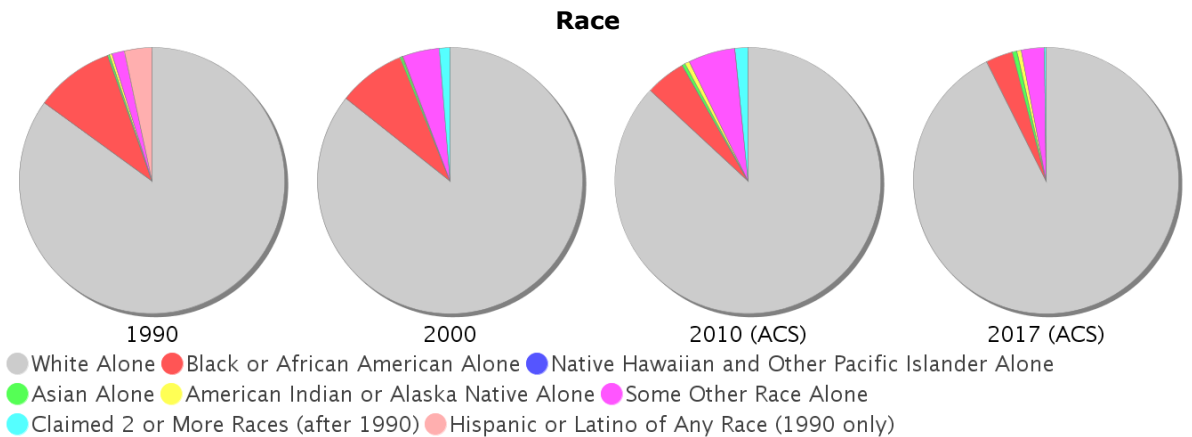
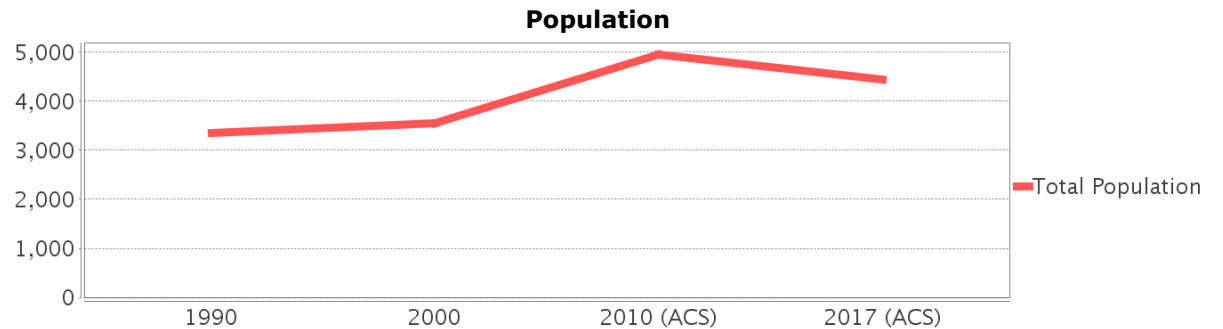
Area: 5.769 square miles
Jurisdiction(s): Cities: Auburndale
 Counties: Polk

General Population Trends

Description	1990	2000	2010 (ACS)	2017 (ACS)
Total Population	3,356	3,553	4,950	4,438
Total Households	1,167	1,394	2,180	1,899
Average Persons per Acre	0.67	0.60	1.08	0.99
Average Persons per Household	2.77	2.61	2.50	2.58
Average Persons per Family	3.15	3.06	2.83	3.19
Males	1,645	1,787	2,434	2,256
Females	1,711	1,767	2,516	2,182

Race and Ethnicity Trends

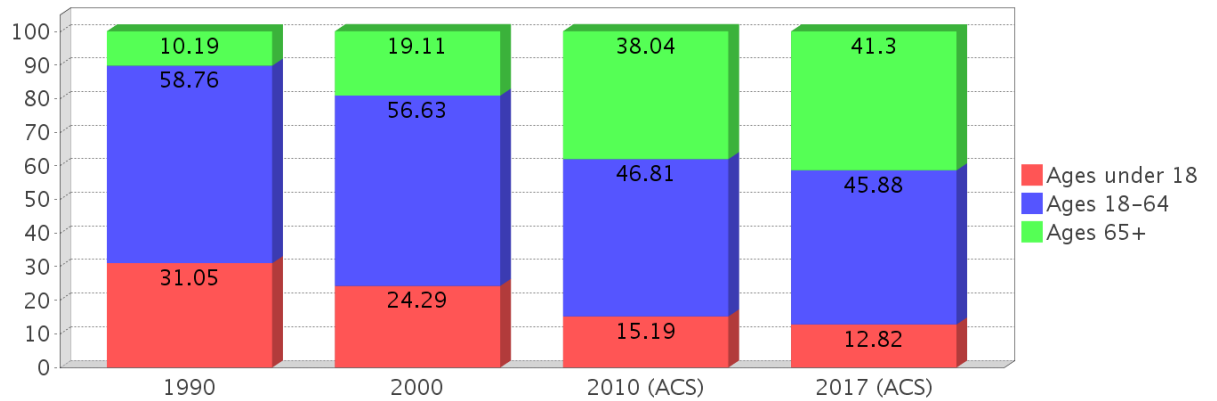
Description	1990	2000	2010 (ACS)	2017 (ACS)
White Alone	2,949 (87.87%)	3,043 (85.65%)	4,300 (86.87%)	4,112 (92.65%)
Black or African American Alone	336 (10.01%)	292 (8.22%)	240 (4.85%)	144 (3.24%)
Native Hawaiian and Other Pacific Islander Alone	0 (0.00%)	0 (0.00%)	1 (0.02%)	0 (0.00%)
Asian Alone	8 (0.24%)	11 (0.31%)	20 (0.40%)	27 (0.61%)
American Indian or Alaska Native Alone	9 (0.27%)	3 (0.08%)	28 (0.57%)	22 (0.50%)
Some Other Race Alone	53 (1.58%)	158 (4.45%)	285 (5.76%)	124 (2.79%)
Claimed 2 or More Races	NA (NA)	47 (1.32%)	77 (1.56%)	9 (0.20%)
Hispanic or Latino of Any Race	117 (3.49%)	218 (6.14%)	521 (10.53%)	630 (14.20%)
Not Hispanic or Latino	3,239 (96.51%)	3,335 (93.86%)	4,429 (89.47%)	3,808 (85.80%)
Minority	465 (13.86%)	556 (15.65%)	854 (17.25%)	792 (17.85%)



Age Trends

Description	1990	2000	2010 (ACS)	2017 (ACS)
Under Age 5	9.48%	6.59%	4.69%	3.00%
Ages 5-17	21.57%	17.70%	10.51%	9.82%
Ages 18-21	5.54%	4.33%	3.39%	3.02%
Ages 22-29	14.18%	9.57%	6.55%	6.44%
Ages 30-39	15.61%	12.16%	7.17%	7.48%
Ages 40-49	10.58%	11.71%	8.38%	9.60%
Ages 50-64	12.84%	18.86%	21.31%	19.33%
Age 65 and Over	10.19%	19.11%	38.04%	41.30%
-Ages 65-74	6.88%	13.23%	22.42%	23.10%
-Ages 75-84	2.86%	4.84%	12.93%	14.80%
-Age 85 and Over	0.45%	1.04%	2.69%	3.38%
Median Age	NA	36	39	50

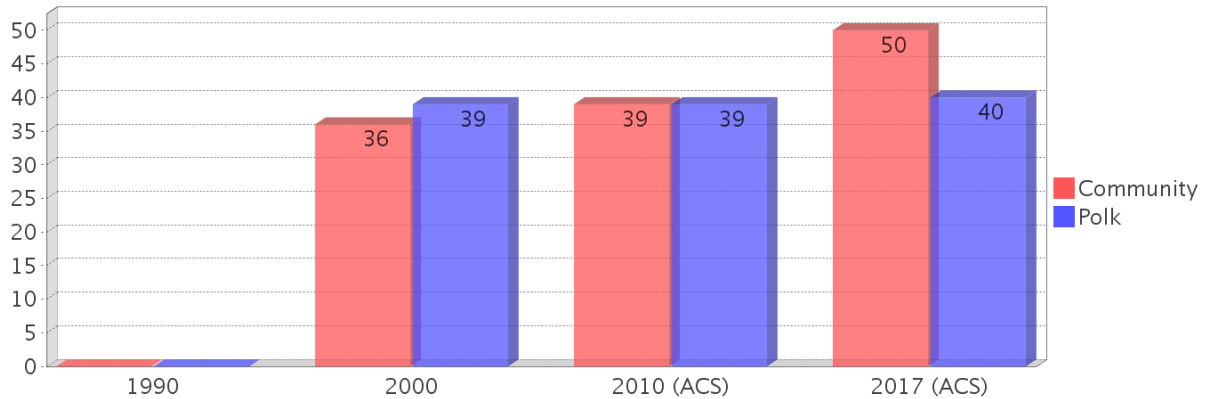
Percentage Population by Age Group



Income Trends

Description	1990	2000	2010 (ACS)	2017 (ACS)
Median Household Income	\$23,202	\$35,616	\$40,738	\$41,126
Median Family Income	\$24,823	\$39,773	\$47,714	\$40,572
Population below Poverty Level	17.07%	16.24%	11.52%	14.92%
Households below Poverty Level	17.48%	12.98%	11.01%	15.32%
Households with Public Assistance Income	9.25%	4.59%	1.15%	2.05%

Median Age Comparison

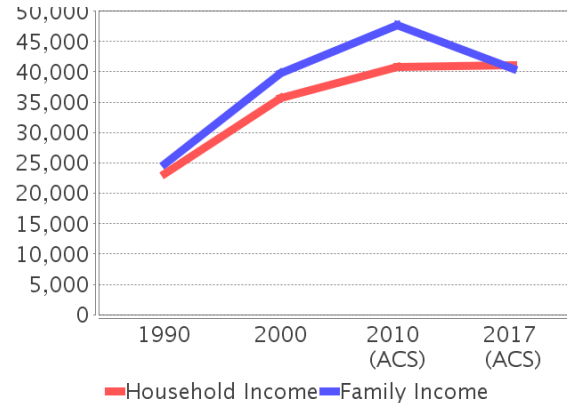


Disability Trends

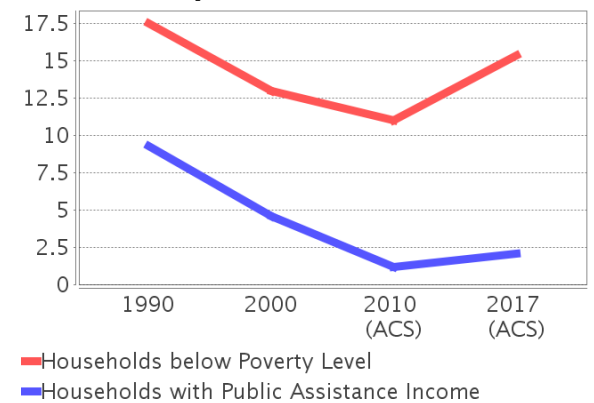
See the Data Sources section below for an explanation about the differences in disability data among the various years.

Description	1990	2000	2010 (ACS)	2017 (ACS)
Population 16 To 64 Years with a disability	312 (12.59%)	693 (20.87%)	(NA)	(NA)
Population 20 To 64 Years with a disability	(NA)	(NA)	(NA)	516 (26.14%)

Income Trends



Poverty and Public Assistance



Educational Attainment Trends

Age 25 and Over

Description	1990	2000	2010 (ACS)	2017 (ACS)
Less than 9th Grade	322 (16.10%)	268 (11.07%)	163 (4.02%)	168 (4.63%)
9th to 12th Grade, No Diploma	549 (27.45%)	460 (19.01%)	509 (12.56%)	391 (10.78%)
High School Graduate or Higher	1,128 (56.40%)	1,692 (69.92%)	3,380 (83.42%)	3,069 (84.59%)
Bachelor's Degree or Higher	89 (4.45%)	215 (8.88%)	594 (14.66%)	436 (12.02%)

Language Trends

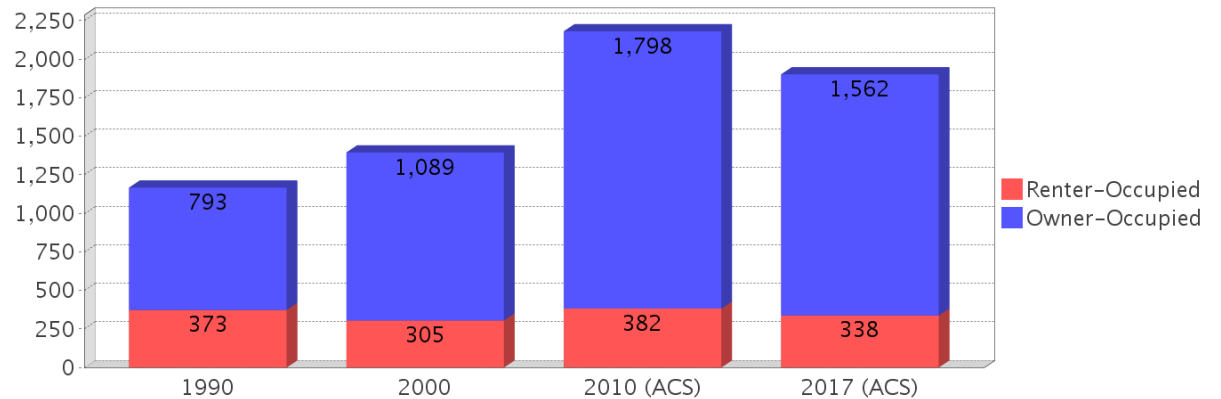
Age 5 and Over

Description	1990	2000	2010 (ACS)	2017 (ACS)
Speaks English Well	21 (0.68%)	56 (1.69%)	93 (1.94%)	96 (2.23%)
Speaks English Not Well	NA (NA)	54 (1.63%)	38 (0.79%)	92 (2.14%)
Speaks English Not at All	NA (NA)	19 (0.57%)	0 (0.00%)	8 (0.19%)
Speaks English Not Well or Not at All	15 (0.49%)	73 (2.20%)	38 (0.79%)	100 (2.32%)

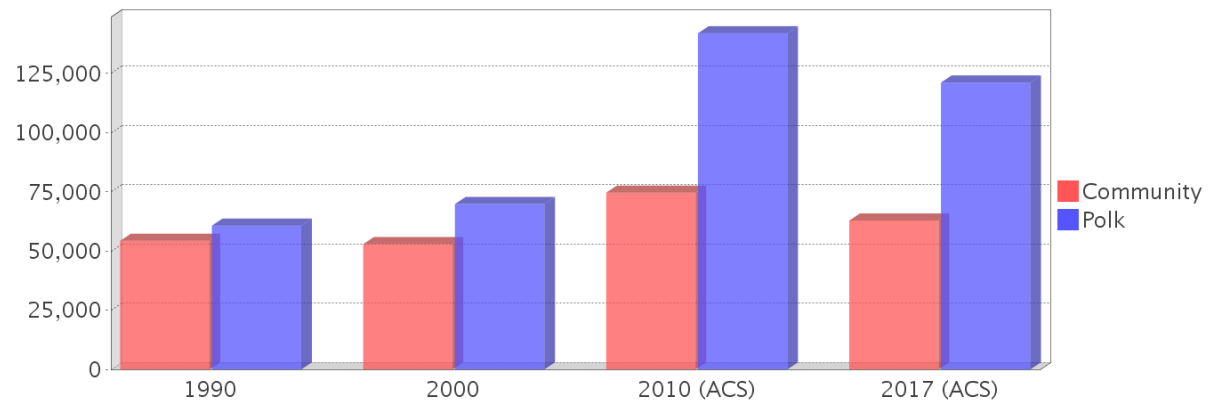
Housing Trends

Description	1990	2000	2010 (ACS)	2017 (ACS)
Total	1,392	1,759	2,650	2,524
Units per Acre	0.41	0.48	0.81	0.78
Single-Family Units	498	657	614	536
Multi-Family Units	124	115	14	33
Mobile Home Units	537	973	2,104	1,955
Owner-Occupied Units	793	1,089	1,798	1,562
Renter-Occupied Units	373	305	382	338
Vacant Units	225	365	471	625
Median Housing Value	\$54,300	\$52,900	\$74,600	\$62,850
Occupied Housing Units w/No Vehicle	63 (5.40%)	72 (5.16%)	124 (5.69%)	41 (2.16%)

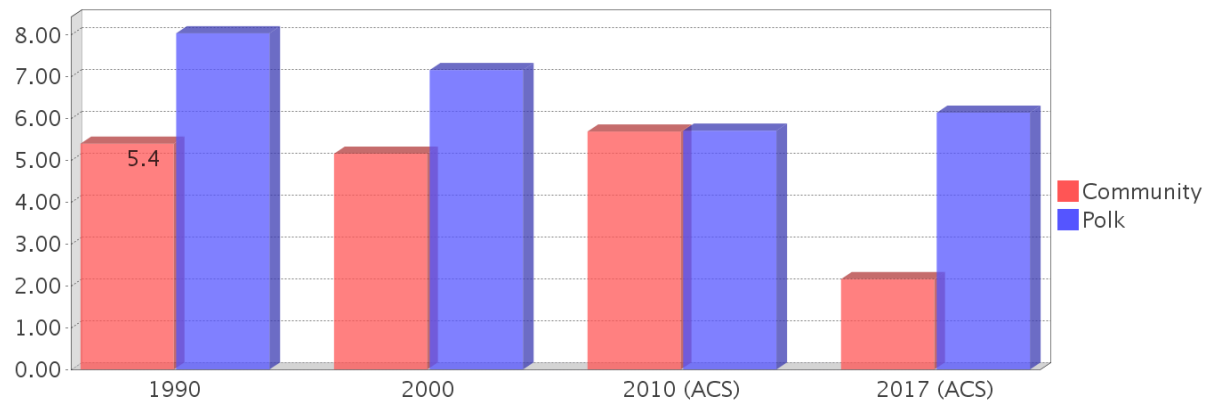
Housing Tenure



Median Housing Value Comparison

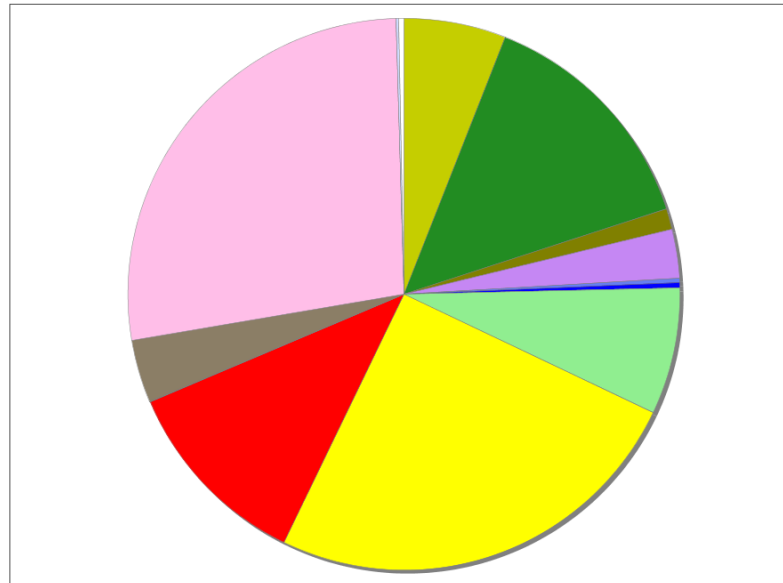


Occupied Units With No Vehicles Available



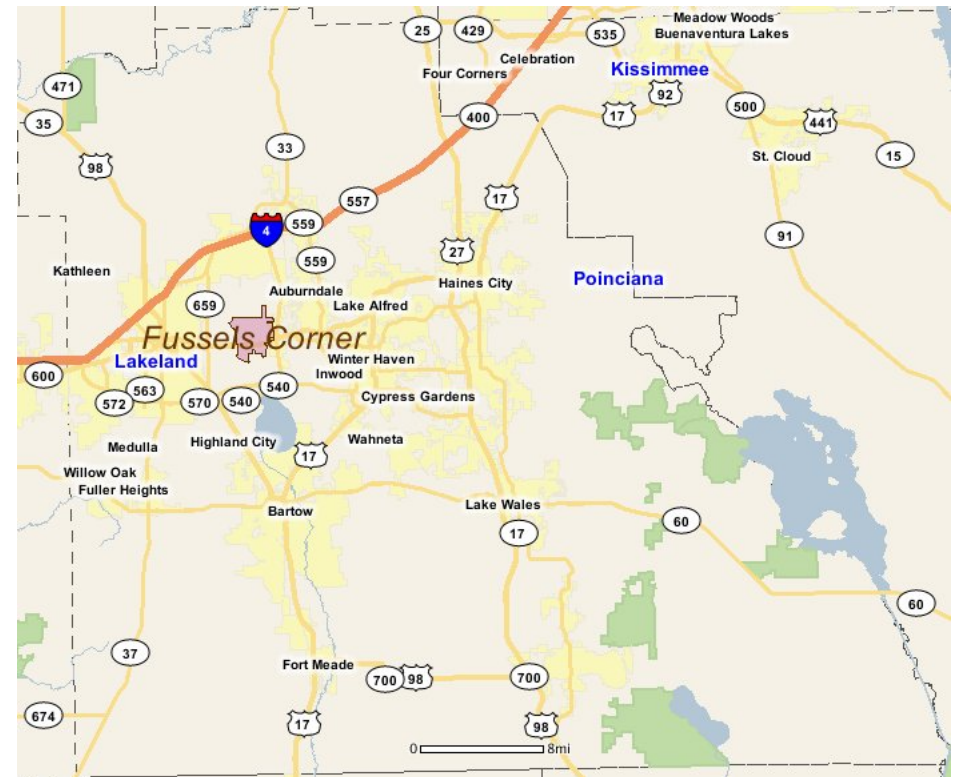
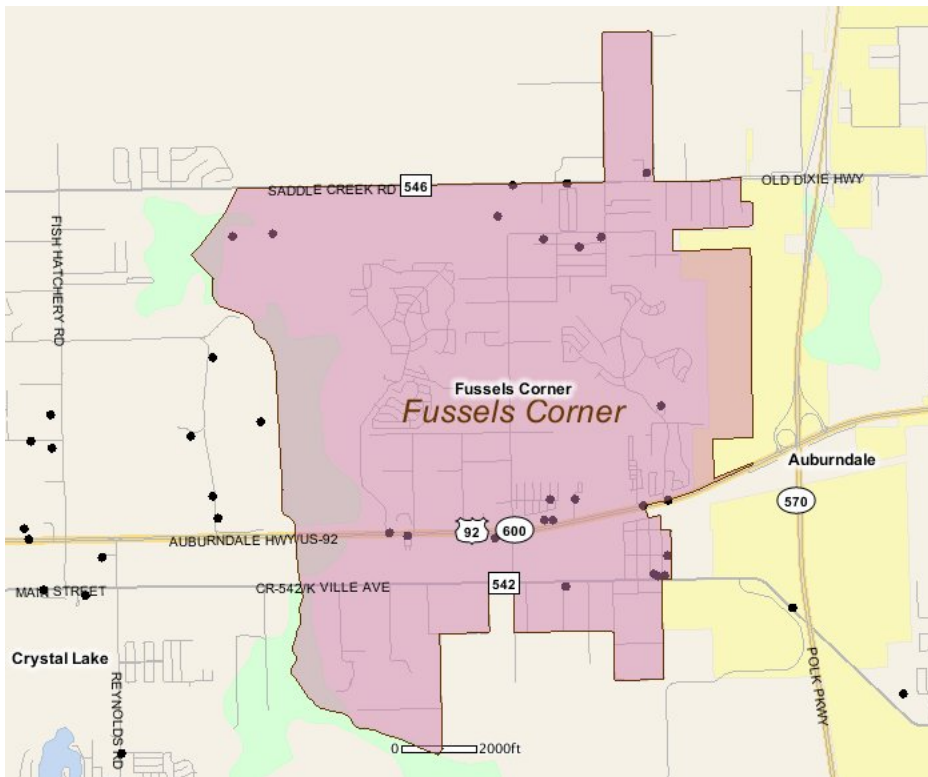
Existing Land Use

Land Use Type	Acres	Percentage
Acreage Not Zoned For Agriculture	209	5.66%
Agricultural	492	13.33%
Centrally Assessed	42	1.14%
Industrial	101	2.74%
Institutional	8	0.22%
Mining	0	0.00%
Other	0	0.00%
Public/Semi-Public	11	0.30%
Recreation	261	7.07%
Residential	879	23.81%
Retail/Office	401	10.86%
Row	1	0.03%
Vacant Residential	129	3.49%
Vacant Nonresidential	954	25.84%
Water	5	0.14%
Parcels With No Values	11	0.30%



- Acreage Not Zoned For Agriculture
- Agricultural
- Centrally Assessed
- Industrial
- Institutional
- Mining
- Other
- Public/Semi-Public
- Recreation
- Residential
- Retail/Office
- Row
- Vacant Residential
- Vacant Nonresidential
- Water
- Parcels With No Values

Location Maps



Community Facilities

The community facilities information below is useful in a variety of ways for environmental evaluations. These community resources should be evaluated for potential sociocultural effects, such as accessibility and relocation potential. The facility types may indicate the types of population groups present in the project study area. Facility staff and leaders can be sources of community information such as who uses the facility and how it is used. Additionally, community facilities are potential public meeting venues.

Community Centers (Points)

Facility Name	Address	Zip Code
VVA CHAPTER 1040	229 GOLF VIEW DR	33823

Florida Parks and Recreational Facilities (Points)

Facility Name	Address	Zip Code
MIDWAY GARDENS	2487 SMOKE RD	33823
TENOROC - LOST LAKE WEST PRIMITIVE BOAT LAUNCH	SADDLE CREEK RD	33085
TENOROC - LOST LAKE EAST PRIMITIVE BOAT LAUNCH	SADDLE CREEK RD	33805
K VILLE COMMUNITY PARK	1339 PAYNE ST	33823

Law Enforcement Facilities (Points)

Facility Name	Address	Zip Code
POLK COUNTY SHERIFF'S OFFICE - COMMUNITY POLICING - KVILLE	1339 PAYNE ST	33823

Mobile Home Parks in Florida

Facility Name	Address	Zip Code
BIDE-A-WHILE MHP	4535 US HWY 92 E	33801
TRANQUIL ACRES MOBILE HOME ESTATES	70 AVENUE E N	33823
SCHALAMAR CREEK GOLF & COUNTRY CLUB COMM	4500 US HWY 92 EAST 1030	33801
CENTRAL LEISURE LK MH & RV PARK	1095 HWY 92 W	33823
HAMPTONS, THE	1094 HWY 92 WEST	33823
TOWER MANOR MH COMM	2604 SADDLE CREEK RD	33823
LAKE DALE MHP	1122 MCCAMPBELL ROAD	33823

Public and Private Schools (Points)

Facility Name	Address	Zip Code
TENOROC HIGH SCHOOL	4905 SADDLE CREEK ROAD	33801

Religious Centers (Points)

Facility Name	Address	Zip Code
CARTER'S BAPTIST CHURCH	4915 US HIGHWAY 92 EAST	33801
BORN AGAIN CHURCH OF GOD IN CHRIST	4071 DUPREE RD	33823
TIMMONS CHAPEL	2493 SMOKE ROAD	33823
APOSTOLIC CHURCH OF JESUS CHRIST	1148 US HWY 92 W	33823
DIXIE HIWAY BAPTIST CHURCH	2343 TAYLOR ROAD	33823
CHURCH OF RELIGIOUS SCIENCE	3742 K VILLE AVENUE	33823
APOSTLE AND PROPHET MINISTRY	ROWELL ST	33823
UNITED CHURCH OF CHRIST	1145 US HWY 92 E	33823
K VILLE ASSEMBLY OF GOD	4155 K VILLE AVENUE	33823

US Census Places

Facility Name
Fussels Corner
Auburndale

Veteran Organizations and Facilities (Points)

Facility Name

VVA CHAPTER 1040

Address

229 GOLF VIEW DR

Zip Code

33823

Block Groups

The following Census Block Groups were used to calculate demographics for this report.

1990 Census Block Groups

121050117023, 121050117022, 121050116002, 121050116003, 121050117021

2000 Census Block Groups

121050116012, 121050117213, 121050117222, 121050117211, 121050116013, 121050116023

2010 Census Block Groups

121050117211, 121050117212, 121050117222, 121050116062, 121050116042, 121050116031

2017 Census Block Groups

121050116062, 121050116042, 121050116031, 121050117212, 121050117211, 121050117222

Data Sources

Area

The geographic area of the community based on a user-specified community boundary or area of interest (AOI) boundary.

Jurisdiction

Jurisdiction(s) includes local government boundaries that intersect the community or AOI boundary.

Demographic Data

Demographic data reported under the headings General Population Trends, Race and Ethnicity Trends, Age Trends, Income Trends, Educational Attainment Trends, Language Trends, and Housing Trends is from the U.S. Decennial Census (1990, 2000) and the American Community Survey (ACS) 5-year estimates from 2006-2010 and 2013-2017. The data was gathered at the block group level for user-specified community boundaries and AOIs, and at the county level for counties. Depending on the dataset, the data represents 100% counts (Census Summary File 1) or sample-based information (Census Summary File 3 or ACS).

About the Census Data:

User-specified community boundaries and AOIs do not always correspond precisely to block group boundaries. In these instances, adjustment of the geographic area and data for affected block groups is required to estimate the actual population. To improve the accuracy of such estimates in the SDR report, the census block group data was adjusted to exclude all census blocks with a population of two or fewer. These areas were eliminated from the corresponding years' block groups. Next, the portion of the block group that lies outside of the community or AOI boundary was removed. The demographics within each block group were then recalculated, assuming an equal area distribution of the population. Note that there may be areas where there is no population.

Use caution when comparing the 100% count data (Decennial Census) to the sample-based data (ACS). In any given year, about one in 40 or 2.5% of U.S. households will receive the ACS questionnaire. Over any five-year period, about one in eight households will receive the questionnaire, as compared to about one in six that received the long form questionnaire for the Decennial Census 2000. (Source: <http://mcdc.missouri.edu/pub/data/acs/Readme.shtml>) The U.S. Census Bureau provides help with this process: <https://www.census.gov/programs-surveys/acs/guidance/comparing-acs-data/2017.html>

Use caution when interpreting changes in Race and Ethnicity over time. Starting with the 2000 Decennial Census, respondents were given a new option of selecting one or more race categories. Also in 2000, the placement of the question about Hispanic origin changed, helping to increase responsiveness to the Hispanic-origin question. Because of these and other changes, the 1990 data on race and ethnicity are not directly comparable with data from later censuses. (Source: <http://www.census.gov/prod/2001pubs/c2kbr01-1.pdf>; <http://www.census.gov/pred/www/rpts/Race%20and%20Ethnicity%20FINAL%20report.pdf>)

The "Minority" calculations are derived from Census and ACS data using both the race and ethnicity responses. On this report, "Minority" refers to individuals who list a race other than White and/or list their ethnicity as Hispanic/Latino. In other words, people who are multi-racial, any single race other than White, or Hispanic/Latino of any race are considered minorities.

Disability data is not included in the 2010 Decennial Census, or the 2006-2010 ACS. This data is available in the 2013-2017 ACS.

Because of changes made to the Census and ACS questions between 1990 and 2017, disability variables should not be compared from year to year. For example: 1) With the 1990 data the disabilities are listed as a "work disability" while this distinction is not made with 2000 or 2017 ACS data; 2) The 2017 ACS data includes the institutionalized population (e.g. persons in prisons and group homes), while this population is not included in 1990 or 2000; 3) the age groupings changed over the years.

Please take the following two concerns into account when viewing this data: 1) With the 1990 data the disabilities are listed as a "work disability" while this distinction is not made with 2000 or 2017 ACS data; 2) The 2017 ACS data includes the institutionalized population (e.g. persons in prisons and group homes), while this population is not included in 1990 or 2000.

The category Bachelor's Degree or Higher under the heading Educational Attainment Trends is a subset of the category High School Graduate or Higher.

Income of households. This includes the income of the householder and all other individuals 15 years old and over in the household, whether they are related to the householder or not. Because many households consist of only one person, average household income is usually less than average family income.

Income of families. In compiling statistics on family income, the incomes of all members 15 years old and over related to the householder are summed and treated as a single amount.

Age Trends median age for 1990 is not available.

Land Use Data

The Land Use information Indicates acreages and percentages for the generalized land use types used to group parcel-specific, existing land use assigned by the county property appraiser office according to the Florida Department of Revenue land use codes.

Community Facilities Data

- Assisted Rental Housing Units - Identifies multifamily rental developments that receive funding assistance under federal, state, and local government programs to offer affordable housing as reported by the Shimberg Center for Housing Studies, University of Florida.
- Mobile Home Parks - Identifies approved or acknowledged mobile home parks reported by the Florida Department of Business and Professional Regulation and Florida Department of Health.
- Migrant Camps - Identifies migrant labor camp facilities inspected by the Florida Department of Health.
- Group Care Facilities - Identifies group care facilities inspected by the Florida Department of Health.

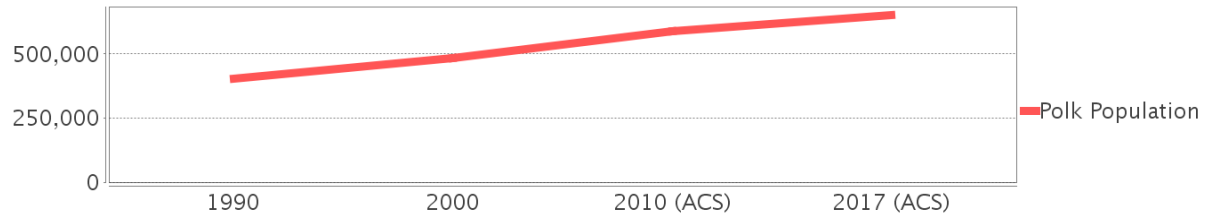
- Community Center and Fraternal Association Facilities - Identifies facilities reported by multiple sources.
- Law Enforcement Correctional Facilities - Identifies facilities reported by multiple sources.
- Cultural Centers - Identifies cultural centers including organizations, buildings, or complexes that promote culture and arts (e.g., aquariums and zoological facilities; arboreta and botanical gardens; dinner theaters; drive-ins; historical places and services; libraries; motion picture theaters; museums and art galleries; performing arts centers; performing arts theaters; planetariums; studios and art galleries; and theater producers stage facilities) reported by multiple sources.
- Fire Department and Rescue Station Facilities - Identifies facilities reported by multiple sources.
- Government Buildings - Identifies local, state, and federal government buildings reported by multiple sources.
- Health Care Facilities - Identifies health care facilities including abortion clinics, dialysis clinics, medical doctors, nursing homes, osteopaths, state laboratories/clinics, and surgicenters/walk-in clinics reported by the Florida Department of Health.
- Hospital Facilities - Identifies hospital facilities reported by multiple sources.
- Law Enforcement Facilities - Identifies law enforcement facilities reported by multiple sources.
- Parks and Recreational Facilities - Identifies parks and recreational facilities reported by multiple sources.
- Religious Center Facilities - Identifies religious centers including churches, temples, synagogues, mosques, chapels, centers, and other types of religious facilities reported by multiple sources.
- Private and Public Schools - Identifies private and public schools reported by multiple sources.
- Social Service Centers - Identifies social service centers reported by multiple sources.
- Veteran Organizations and Facilities

Polk County Demographic Profile

General Population Trends - Polk

Description	1990	2000	2010 (ACS)	2017 (ACS)
Total Population	405,382	483,924	590,116	652,256
Total Households	155,969	187,233	223,689	226,604
Average Persons per Acre	0.315	0.376	0.458	0.507
Average Persons per Household	2.599	2.519	3.00	2.82
Average Persons per Family	3.016	3.05	3.133	3.507
Males	196,590	237,414	289,679	319,775
Females	208,792	246,510	300,437	332,481

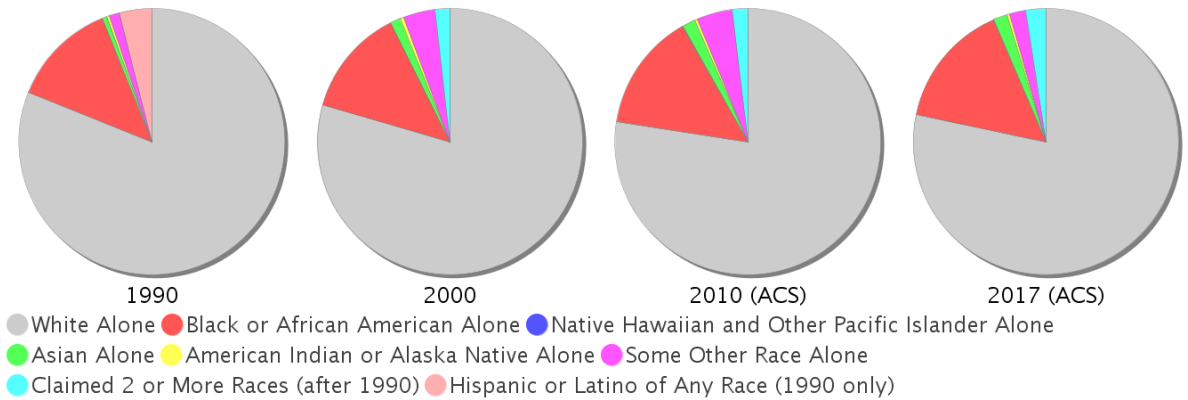
Polk County Population



Race and Ethnicity Trends - Polk

Description	1990	2000	2010 (ACS)	2017 (ACS)
White Alone	341,952 (84.35%)	384,478 (79.45%)	456,933 (77.43%)	510,554 (78.28%)
Black or African American Alone	54,385 (13.42%)	63,709 (13.17%)	84,564 (14.33%)	99,355 (15.23%)
Native Hawaiian and Other Pacific Islander Alone	(NA)	159 (0.03%)	348 (0.06%)	278 (0.04%)
Asian Alone	2,429 (0.60%)	5,805 (1.20%)	9,264 (1.57%)	10,945 (1.68%)
American Indian or Alaska Native Alone	1,158 (0.29%)	2,172 (0.45%)	2,123 (0.36%)	2,037 (0.31%)
Some Other Race Alone	5,401 (1.33%)	18,781 (3.88%)	25,644 (4.35%)	12,945 (1.98%)
Claimed 2 or More Races	(NA)	8,820 (1.82%)	11,240 (1.90%)	16,142 (2.47%)
Hispanic or Latino of Any Race	16,600 (4.09%)	45,650 (9.43%)	97,811 (16.57%)	134,399 (20.61%)
Not Hispanic or Latino	388,782 (95.91%)	438,274 (90.57%)	492,305 (83.43%)	517,857 (79.39%)
Minority	213,326 (52.62%)	122,845 (25.39%)	213,326 (36.15%)	254,514 (39.02%)

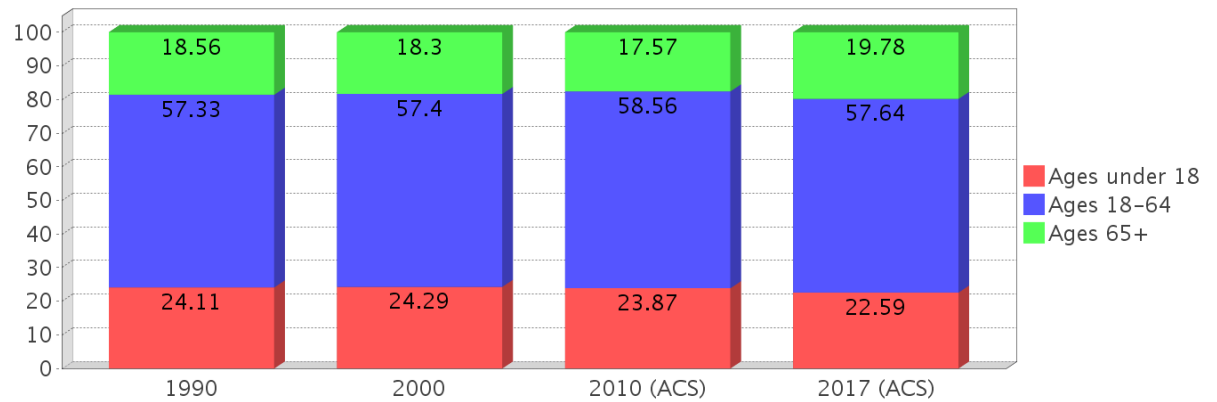
Polk County Race



Age Trends - Polk

Description	1990	2000	2010 (ACS)	2017 (ACS)
Under Age 5	6.96%	6.35%	6.64%	5.88%
Ages 5-17	17.15%	17.94%	17.23%	16.71%
Ages 18-21	5.35%	4.97%	5.20%	5.08%
Ages 22-29	11.11%	9.09%	9.68%	9.95%
Ages 30-39	14.29%	13.60%	12.05%	11.80%
Ages 40-49	11.65%	13.63%	13.12%	12.15%
Ages 50-64	14.94%	16.11%	18.51%	18.66%
Age 65 and Over	18.56%	18.30%	17.57%	19.78%
-Ages 65-74	11.27%	9.93%	9.73%	11.22%
-Ages 75-84	5.84%	6.53%	5.93%	6.45%
-Age 85 and Over	1.45%	1.85%	1.91%	2.11%
Median Age	NA	39	39	40

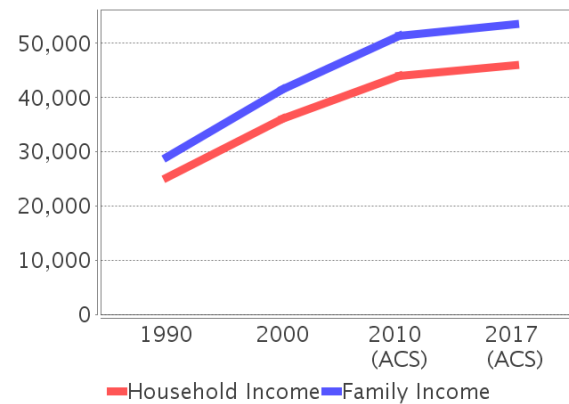
Percentage Population by Age Group - Polk



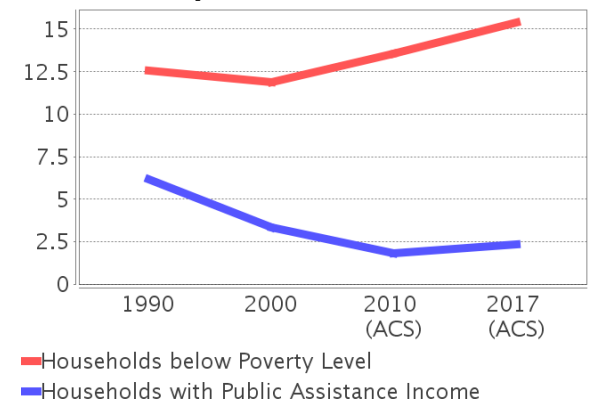
Income Trends - Polk

Description	1990	2000	2010 (ACS)	2017 (ACS)
Median Household Income	\$25,216	\$36,036	\$43,946	\$45,988
Median Family Income	\$28,965	\$41,442	\$51,395	\$53,542
Population below Poverty Level	12.94%	12.94%	15.17%	17.31%
Households below Poverty Level	12.54%	11.89%	13.57%	15.38%
Households with Public Assistance Income	6.19%	3.32%	1.83%	2.35%

Income Trends



Poverty and Public Assistance



Disability Trends - Polk

See the Data Sources section below for an explanation about the differences in disability data among the various years.

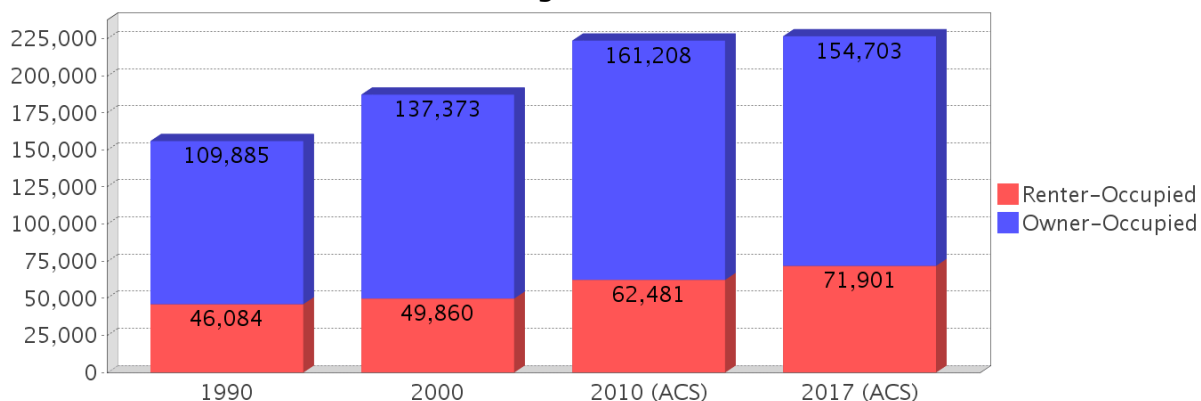
Description	1990	2000	2010 (ACS)	2017 (ACS)
Population 16 To 64 Years with a disability	23,997 (7.70%)	69,356 (15.61%)	NA (NA)	NA (NA)
Population 20 To 64 Years with a disability	NA (NA)	NA (NA)	NA (NA)	45,503 (12.88%)

Educational Attainment Trends - Polk

Age 25 and Over

Description	1990	2000	2010 (ACS)	2017 (ACS)
Less than 9th Grade	31,499 (11.61%)	26,554 (8.14%)	26,321 (6.62%)	28,433 (6.34%)
9th to 12th Grade, No Diploma	55,338 (20.39%)	55,786 (17.10%)	45,563 (11.46%)	42,077 (9.38%)
High School Graduate or Higher	184,574 (68.01%)	243,868 (74.76%)	325,630 (81.92%)	378,170 (84.29%)
Bachelor's Degree or Higher	34,888 (12.85%)	48,669 (14.92%)	71,430 (17.97%)	87,405 (19.48%)

Housing Tenure - Polk



Language Trends - Polk

Age 5 and Over

Description	1990	2000	2010 (ACS)	2017 (ACS)
Speaks English Well	5,121 (1.36%)	11,118 (2.45%)	19,850 (3.60%)	18,779 (3.06%)
Speaks English Not Well	NA	9,121 (2.01%)	18,814 (3.41%)	16,387 (2.67%)
Speaks English Not at All	NA	4,309 (0.95%)	8,314 (1.51%)	12,007 (1.96%)
Speaks English Not Well or Not at All	3,996 (1.06%)	13,430 (2.96%)	27,128 (4.92%)	28,394 (4.63%)

Housing Trends - Polk

Description	1990	2000	2010 (ACS)	2017 (ACS)
Total	186,225	226,376	277,547	288,797
Units per Acre	0.145	0.176	0.216	0.224
Single-Family Units	93,012	126,660	170,158	183,132
Multi-Family Units	24,543	31,447	39,463	43,085
Mobile Home Units	37,244	65,235	66,976	61,982
Owner-Occupied Units	109,885	137,373	161,208	154,703
Renter-Occupied Units	46,084	49,860	62,481	71,901
Vacant Units	30,256	39,143	53,858	62,193
Median Housing Value	\$60,700	\$69,800	\$141,900	\$121,100
Occupied Housing Units w/No Vehicle	12,534 (8.04%)	13,413 (7.16%)	12,764 (5.71%)	13,910 (6.14%)

County Data Sources

Demographic data reported is from the U.S. Decennial Census (1990, 2000) and the American Community Survey (ACS) 5-year estimates from 2006-2010 and 2013-2017. The data was gathered at the county level. Depending on the dataset, the data represents 100% counts (Census Summary File 1) or sample-based information (Census Summary File 3 or ACS).

About the Census Data:

Use caution when comparing the 100% count data (Decennial Census) to the sample-based data (ACS). In any given year, about one in 40 or 2.5% of U.S. households will receive the ACS questionnaire. Over any five-year period, about one in eight households will receive the questionnaire, as compared to about one in six that received the long form questionnaire for the Decennial Census 2000. (Source: <http://mcdc.missouri.edu/pub/data/acs/Readme.shtml>) The U.S. Census Bureau provides help with this process:

<https://www.census.gov/programs-surveys/acs/guidance/comparing-acs-data/2017.html>

Use caution when interpreting changes in Race and Ethnicity over time. Starting with the 2000 Decennial Census, respondents were given a new option of selecting one or more race categories. Also in 2000, the placement of the question about Hispanic origin changed, helping to increase responsiveness to the Hispanic-origin question. Because of these and other changes, the 1990 data on race and ethnicity are not directly comparable with data from later censuses. (Source: <http://www.census.gov/prod/2001pubs/c2kbr01-1.pdf>;
<http://www.census.gov/pred/www/rpts/Race%20and%20Ethnicity%20FINAL%20report.pdf>)

The "Minority" calculations are derived from Census and ACS data using both the race and ethnicity responses. On this report, "Minority" refers to individuals who list a race other than White and/or list their ethnicity as Hispanic/Latino. In other words, people who are multi-racial, any single race other than White, or Hispanic/Latino of any race are considered minorities.

Disability data is not included in the 2010 Decennial Census, or the 2006-2010 ACS. This data is available in the 2013-2017 ACS.

Because of changes made to the Census and ACS questions between 1990 and 2017, disability variables should not be compared from year to year. For example: 1) With the 1990 data the disabilities are listed as a "work disability" while this distinction is not made with 2000 or 2017 ACS data; 2) The 2017 ACS data includes the institutionalized population (e.g. persons in prisons and group homes), while this population is not included in 1990 or 2000; 3) the age groupings changed over the years.

Please take the following two concerns into account when viewing this data: 1) With the 1990 data the disabilities are listed as a "work disability" while this distinction is not made with 2000 or 2017 ACS data; 2) The 2017 ACS data includes the institutionalized population (e.g. persons in prisons and group homes), while this population is not included in 1990 or 2000.

source:

<https://www.census.gov/people/disability/methodology/acs.html>

<https://www.census.gov/population/www/cen2000/90vs00/index.html>

The category Bachelor's Degree or Higher under the heading Educational Attainment Trends is a subset of the category High School Graduate or Higher.

Metadata

- Community and Fraternal Centers https://etdmpub.florida-estat.org/metadata/gc_communitycenter.htm
- Correctional Facilities in Florida https://etdmpub.florida-estat.org/metadata/gc_correctional.htm
- Cultural Centers in Florida https://etdmpub.florida-estat.org/metadata/gc_culturecenter.htm
- Fire Department and Rescue Station Facilities in Florida https://etdmpub.florida-estat.org/metadata/gc_firestat.htm
- Local, State, and Federal Government Buildings in Florida https://etdmpub.florida-estat.org/metadata/gc_govbuild.htm
- Florida Health Care Facilities https://etdmpub.florida-estat.org/metadata/gc_health.htm
- Hospital Facilities in Florida https://etdmpub.florida-estat.org/metadata/gc_hospitals.htm
- Law Enforcement Facilities in Florida https://etdmpub.florida-estat.org/metadata/gc_lawenforce.htm
- Florida Parks and Recreational Facilities https://etdmpub.florida-estat.org/metadata/gc_parks.htm
- Religious Centers https://etdmpub.florida-estat.org/metadata/gc_religion.htm
- Florida Public and Private Schools https://etdmpub.florida-estat.org/metadata/gc_schools.htm
- Social Service Centers https://etdmpub.florida-estat.org/metadata/gc_socialservice.htm
- Assisted Rental Housing Units in Florida https://etdmpub.florida-estat.org/metadata/gc_assisted_housing.htm
- Group Care Facilities <https://etdmpub.florida-estat.org/metadata/groupcare.htm>
- Mobile Home Parks in Florida https://etdmpub.florida-estat.org/metadata/gc_mobilehomes.htm
- Migrant Camps in Florida <https://etdmpub.florida-estat.org/metadata/migrant.htm>
- Veteran Organizations and Facilities https://etdmpub.florida-estat.org/metadata/gc_veterans.htm
- Generalized Land Use - Florida DOT District 1 https://etdmpub.florida-estat.org/metadata/d1_lu_gen.htm
- Census Block Groups in Florida https://etdmpub.florida-estat.org/metadata/e2_cenacs_cci.htm
- 1990 Census Block Groups in Florida https://etdmpub.florida-estat.org/metadata/e2_cenblkgrp_1990_cci.htm
- 2000 Census Block Groups in Florida https://etdmpub.florida-estat.org/metadata/e2_cenblkgrp_2000_cci.htm
- 2010 Census Block Groups in Florida https://etdmpub.florida-estat.org/metadata/e2_cenblkgrp_2010_cci.htm