

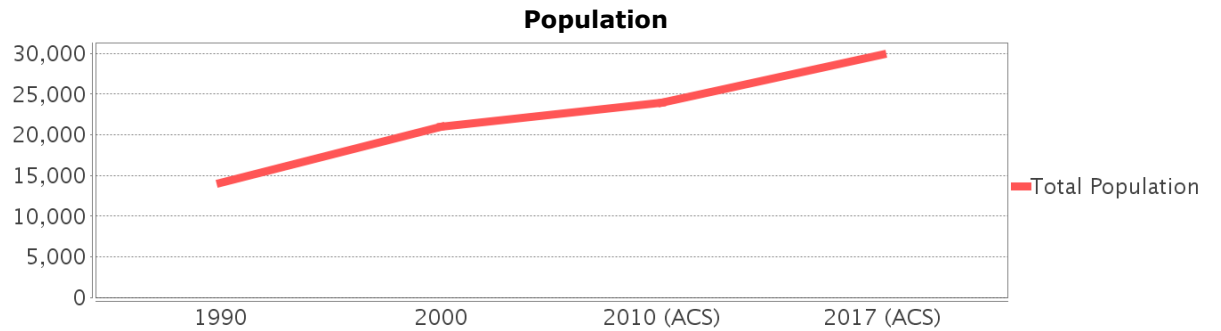
# Sociocultural Data Report

## Golden Gate

**Area:** 4.111 square miles  
**Jurisdiction(s):** Cities: NA  
 Counties: Collier

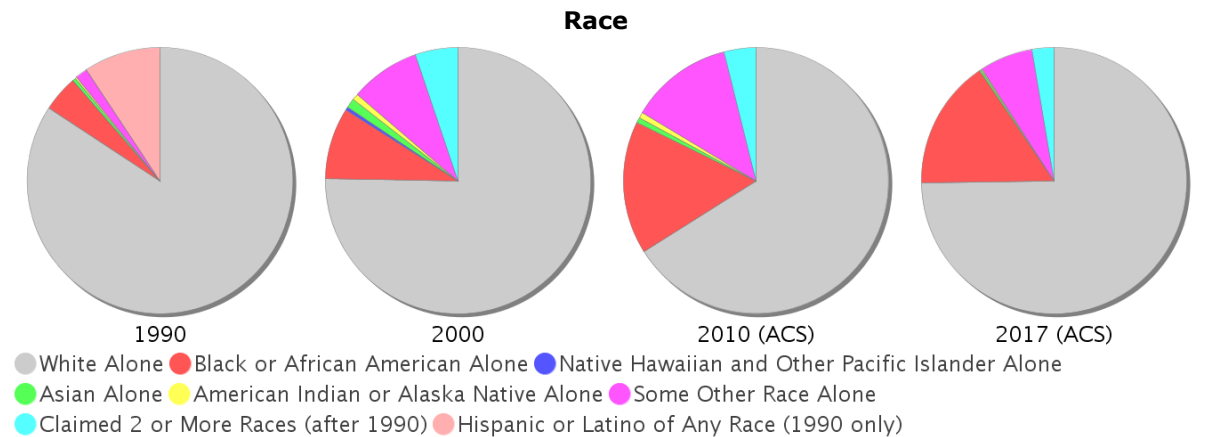
## General Population Trends

Description	1990	2000	2010 (ACS)	2017 (ACS)
Total Population	14,056	21,012	23,961	29,841
Total Households	4,934	6,540	7,090	7,461
Average Persons per Acre	5.10	7.79	10.22	12.96
Average Persons per Household	2.95	3.17	3.31	3.87
Average Persons per Family	3.31	3.63	3.69	4.40
Males	7,053	10,954	12,557	15,148
Females	7,003	10,058	11,404	14,693

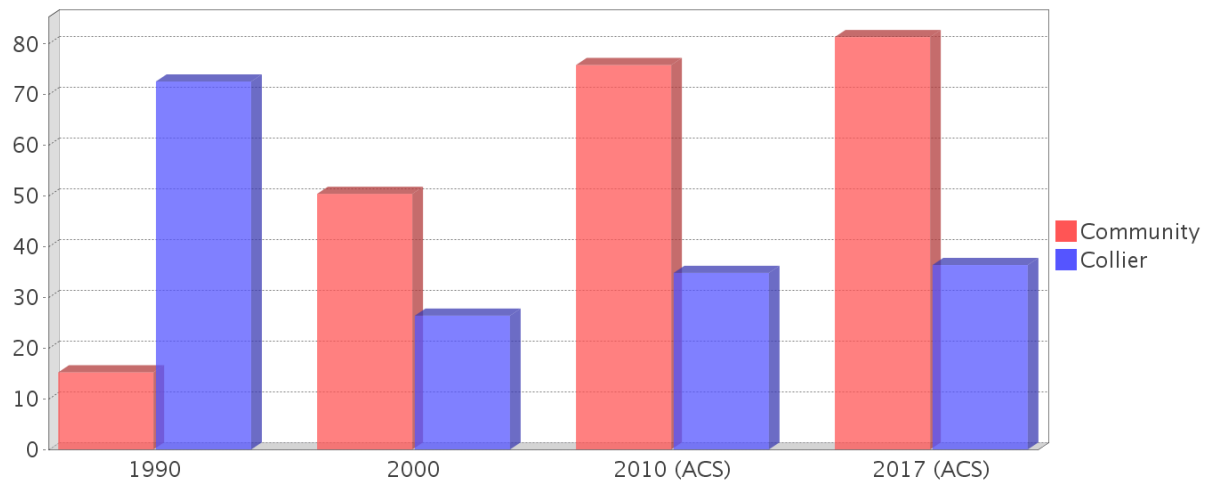


## Race and Ethnicity Trends

Description	1990	2000	2010 (ACS)	2017 (ACS)
White Alone	13,059 (92.91%)	15,806 (75.22%)	15,821 (66.03%)	22,313 (74.77%)
Black or African American Alone	677 (4.82%)	1,832 (8.72%)	3,876 (16.18%)	4,710 (15.78%)
Native Hawaiian and Other Pacific Islander Alone	2 (0.01%)	84 (0.40%)	0 (0.00%)	0 (0.00%)
Asian Alone	59 (0.42%)	240 (1.14%)	159 (0.66%)	67 (0.22%)
American Indian or Alaska Native Alone	29 (0.21%)	164 (0.78%)	166 (0.69%)	28 (0.09%)
Some Other Race Alone	231 (1.64%)	1,789 (8.51%)	3,003 (12.53%)	1,922 (6.44%)
Claimed 2 or More Races	NA (NA)	1,097 (5.22%)	936 (3.91%)	801 (2.68%)
Hispanic or Latino of Any Race	1,444 (10.27%)	7,712 (36.70%)	14,023 (58.52%)	19,000 (63.67%)
Not Hispanic or Latino	12,612 (89.73%)	13,300 (63.30%)	9,938 (41.48%)	10,841 (36.33%)
Minority	2,138 (15.21%)	10,592 (50.41%)	18,164 (75.81%)	24,268 (81.32%)



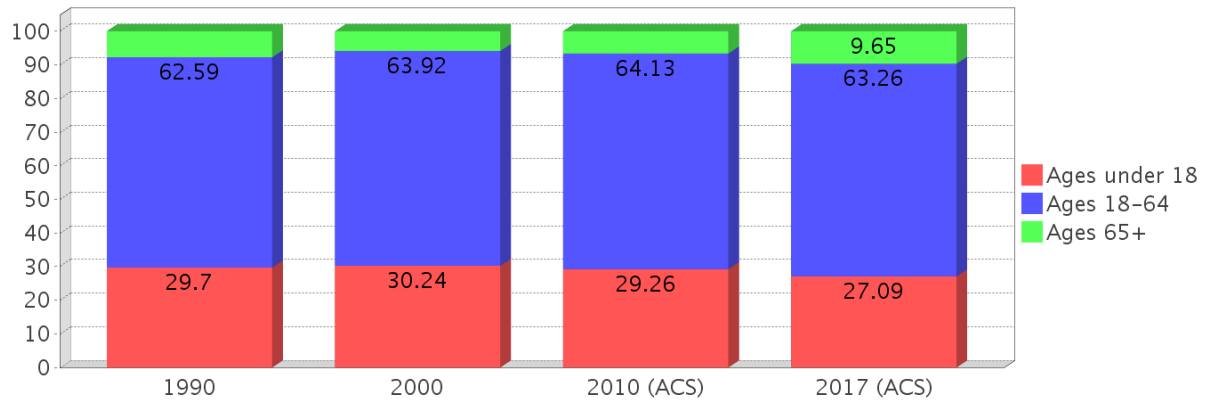
## Minority Percentage Population



### Age Trends

Description	1990	2000	2010 (ACS)	2017 (ACS)
Under Age 5	10.00%	8.19%	9.74%	8.29%
Ages 5-17	19.70%	22.05%	19.52%	18.80%
Ages 18-21	5.58%	6.58%	6.21%	5.36%
Ages 22-29	17.20%	13.74%	14.31%	13.53%
Ages 30-39	19.91%	18.98%	15.73%	16.80%
Ages 40-49	10.87%	14.17%	15.10%	13.33%
Ages 50-64	9.02%	10.45%	12.77%	14.25%
Age 65 and Over	7.71%	5.83%	6.61%	9.65%
-Ages 65-74	5.39%	2.90%	4.04%	5.90%
-Ages 75-84	2.01%	2.32%	2.03%	3.12%
-Age 85 and Over	0.31%	0.62%	0.55%	0.62%
Median Age	NA	29	30	32

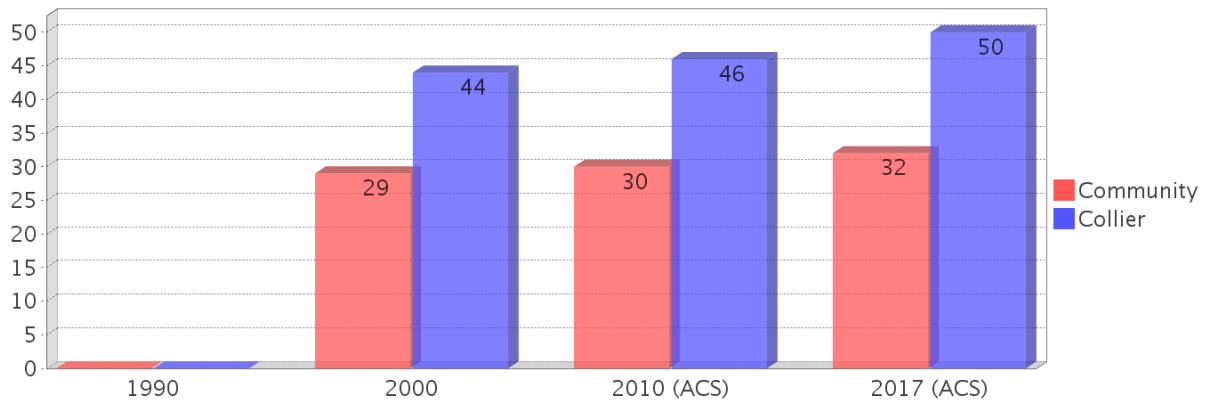
### Percentage Population by Age Group



### Income Trends

Description	1990	2000	2010 (ACS)	2017 (ACS)
Median Household Income	\$33,264	\$44,196	\$43,636	\$48,083
Median Family Income	\$35,318	\$43,576	\$45,944	\$45,152
Population below Poverty Level	5.51%	13.99%	19.64%	22.49%
Households below Poverty Level	5.78%	11.28%	12.61%	21.18%
Households with Public Assistance Income	3.16%	2.11%	1.14%	1.85%

### Median Age Comparison

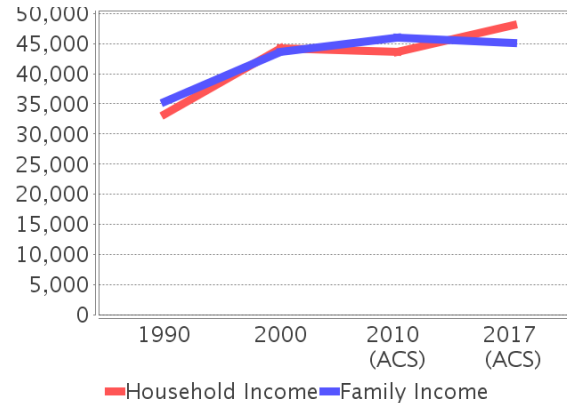


### Disability Trends

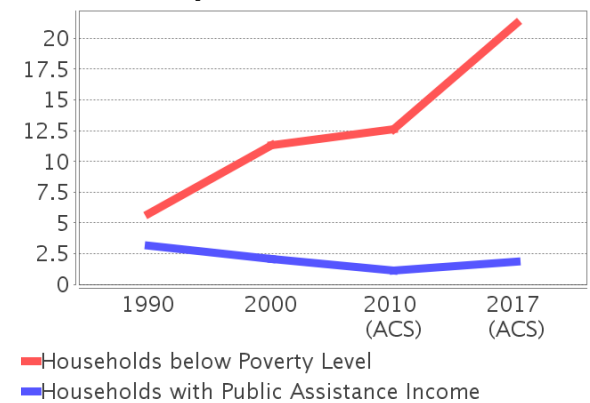
See the Data Sources section below for an explanation about the differences in disability data among the various years.

Description	1990	2000	2010 (ACS)	2017 (ACS)
Population 16 To 64 Years with a disability	466 (4.56%)	4398 (22.81%)	(NA)	(NA)
Population 20 To 64 Years with a disability	(NA)	(NA)	(NA)	1026 (5.65%)

### Income Trends



### Poverty and Public Assistance



## Educational Attainment Trends

Age 25 and Over

Description	1990	2000	2010 (ACS)	2017 (ACS)
Less than 9th Grade	547 (6.46%)	1,523 (12.28%)	2,660 (18.31%)	3,442 (18.13%)
9th to 12th Grade, No Diploma	1,418 (16.76%)	2,497 (20.14%)	2,027 (13.95%)	2,379 (12.53%)
High School Graduate or Higher	6,497 (76.78%)	8,381 (67.58%)	9,839 (67.73%)	13,159 (69.33%)
Bachelor's Degree or Higher	932 (11.01%)	1,361 (10.97%)	1,345 (9.26%)	2,377 (12.52%)

## Language Trends

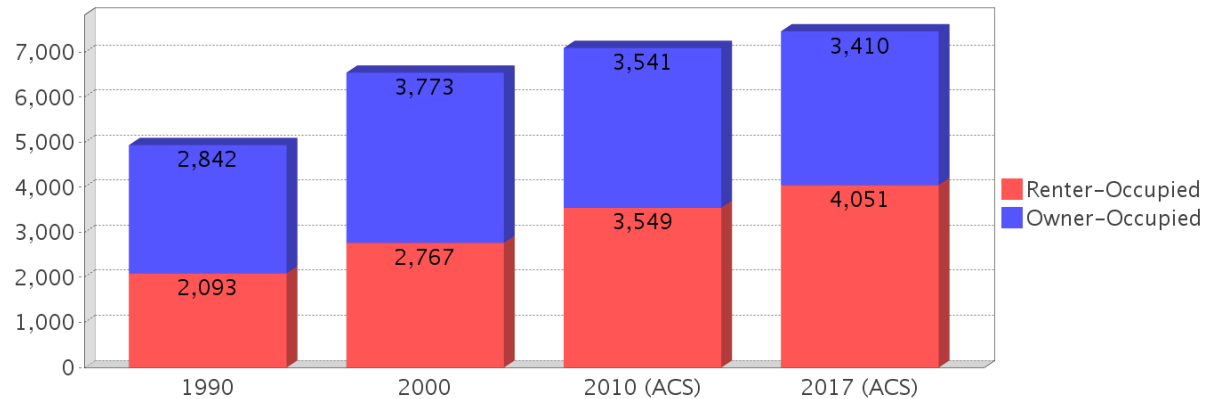
Age 5 and Over

Description	1990	2000	2010 (ACS)	2017 (ACS)
Speaks English Well	400 (3.13%)	1,995 (10.34%)	2,702 (12.34%)	2,984 (10.90%)
Speaks English Not Well	NA (NA)	1,997 (10.35%)	4,770 (21.79%)	4,965 (18.14%)
Speaks English Not at All	NA (NA)	1,401 (7.26%)	2,132 (9.74%)	3,160 (11.55%)
Speaks English Not Well or Not at All	368 (2.88%)	3,398 (17.61%)	6,902 (31.53%)	8,125 (29.69%)

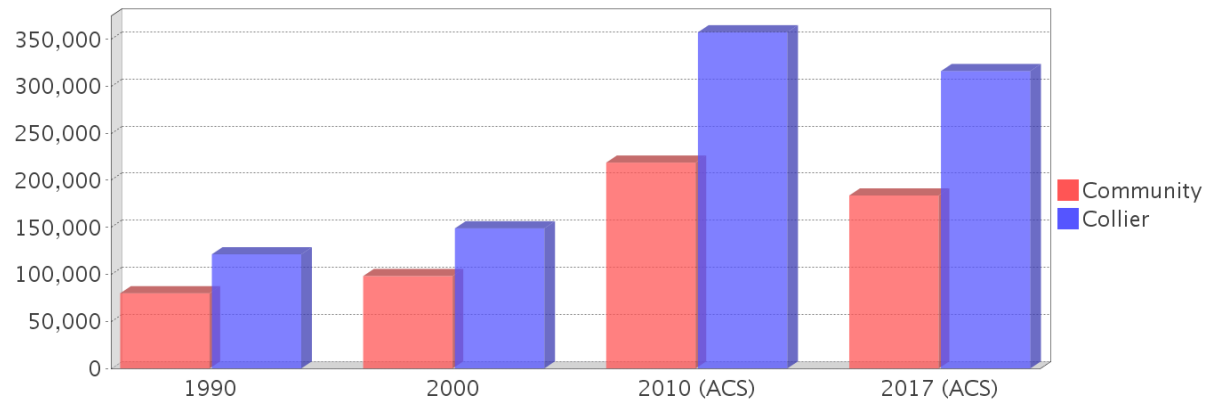
## Housing Trends

Description	1990	2000	2010 (ACS)	2017 (ACS)
Total	5,900	7,024	8,217	7,909
Units per Acre	2.54	2.91	3.66	3.53
Single-Family Units	3,159	4,341	4,298	3,932
Multi-Family Units	1,756	2,656	3,614	3,948
Mobile Home Units	2	27	96	29
Owner-Occupied Units	2,842	3,773	3,541	3,410
Renter-Occupied Units	2,093	2,767	3,549	4,051
Vacant Units	966	484	1,127	448
Median Housing Value	\$79,950	\$98,200	\$218,800	\$183,900
Occupied Housing Units w/No Vehicle	114 (2.31%)	275 (4.20%)	470 (6.63%)	978 (13.11%)

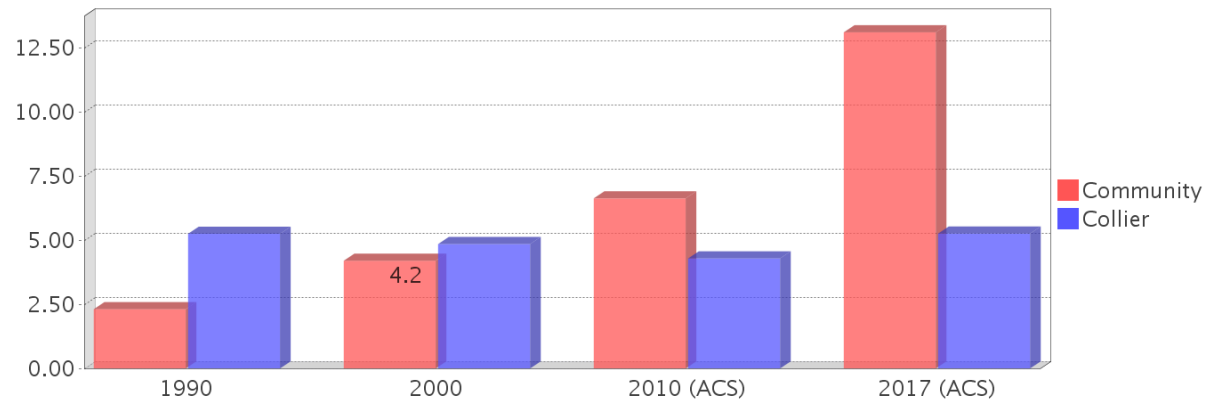
## Housing Tenure



## Median Housing Value Comparison

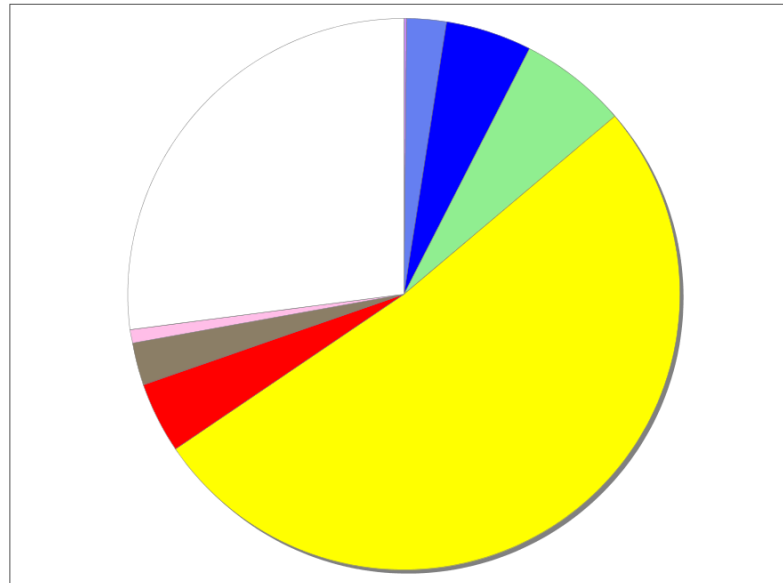


## Occupied Units With No Vehicles Available



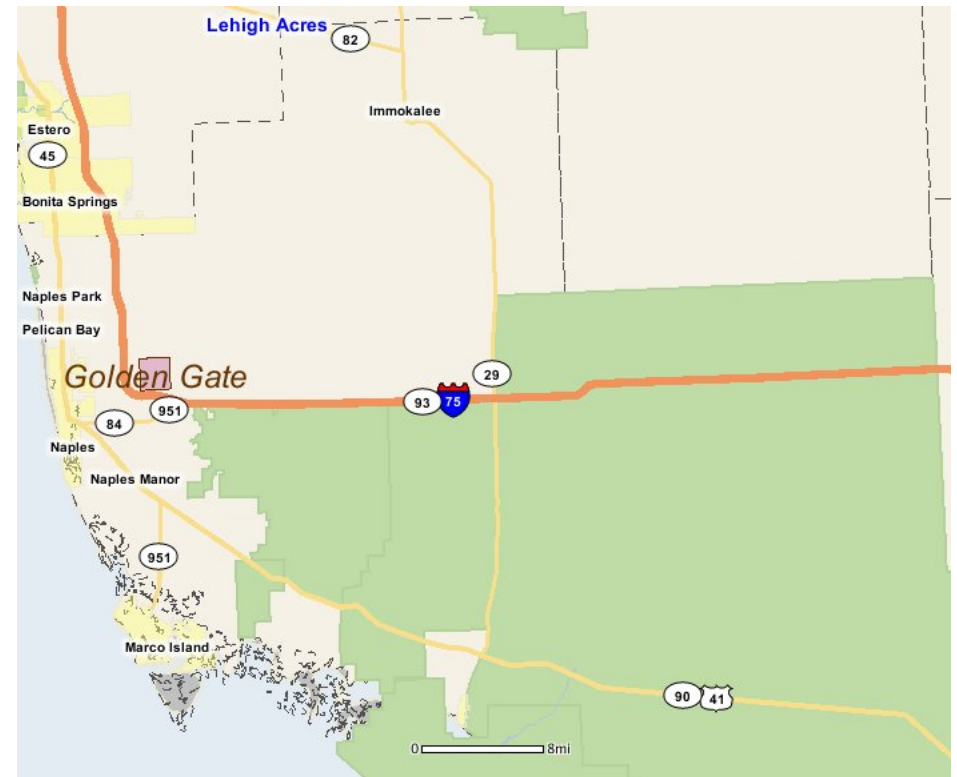
## Existing Land Use

Land Use Type	Acres	Percentage
Acreage Not Zoned For Agriculture	0	0.00%
Agricultural	0	0.00%
Centrally Assessed	0	0.00%
Industrial	4	0.15%
Institutional	61	2.32%
Mining	0	0.00%
Other	0	0.00%
Public/Semi-Public	133	5.05%
Recreation	166	6.31%
Residential	1,361	51.73%
Retail/Office	110	4.18%
Row	<0.5	<0.02%
Vacant Residential	65	2.47%
Vacant Nonresidential	21	0.80%
Water	0	0.00%
Parcels With No Values	712	27.06%



- Acreage Not Zoned For Agriculture
- Agricultural
- Centrally Assessed
- Industrial
- Institutional
- Mining
- Other
- Public/Semi-Public
- Recreation
- Residential
- Retail/Office
- Row
- Vacant Residential
- Vacant Nonresidential
- Water
- Parcels With No Values

## Location Maps



---

## Community Facilities

The community facilities information below is useful in a variety of ways for environmental evaluations. These community resources should be evaluated for potential sociocultural effects, such as accessibility and relocation potential. The facility types may indicate the types of population groups present in the project study area. Facility staff and leaders can be sources of community information such as who uses the facility and how it is used. Additionally, community facilities are potential public meeting venues.

### Assisted Housing (Points)

Facility Name	Address	Zip Code
WHISTLER'S GREEN	4700 WHISTLER'S GREEN CIRCLE	34116
LAUREL RIDGE	5460 LAUREL RIDGE LANE	33999

### Community Boundaries (User defined)

Facility Name
Forest Park
Golden Gate City
Urban Estates

### Community Centers (Points)

Facility Name	Address	Zip Code
GOLDEN GATE COMMUNITY CENTER	4701 GOLDEN GATE PKWY	34116
MOOSE LODGE 1654 - GOLDEN GATE	1900 40TH TER SW	34116
GRACE PL FOR CHILDREN & FAMILY	4300 21ST AVE SW	34116

### Cultural Centers (Points)

Facility Name	Address	Zip Code
GOLDEN GATE BRANCH LIBRARY	2432 LUCERNE RD	34116

### Fire Stations (Points)

Facility Name	Address	Zip Code
GOLDEN GATE FIRE DEPARTMENT AND RESCUE STATION 70	4741 GOLDEN GATE PKWY	34116

### Florida Parks and Recreational Facilities (Points)

Facility Name	Address	Zip Code
AARON LUTZ NEIGHBORHOOD PARK	23RD AVE SW	34116
GOLDEN GATE COMMUNITY CENTER PARK	4701 GOLDEN GATE PKWY	34116
WHEELS BMX SKATE PARK	4701 GOLDEN GATE PKWY	34116
RITA EATON NEIGHBORHOOD PARK	52ND TER & 18TH CT	34116

### Government Building

Facility Name	Address	Zip Code
COLLIER COUNTY HEALTH DEPARTMENT - GOLDEN GATE PARKWAY	4945 GOLDEN GATE PKWY	34116
COLLIER COUNTY TAX COLLECTOR	4715 GOLDEN GATE PKWY	34116
COLLIER COUNTY PROPERTY APPRAISER	4715 GOLDEN GATE PKWY	34116
U S POST OFFICE - GOLDEN GATE	11665 COLLIER BLVD	34116
COLLIER COUNTY - COUNTY COURT - GOLDEN GATE	4715 GOLDEN GATE PKWY	34116

### Healthcare Facilities (Geocoded)

Facility Name	Address	Zip Code
HCN-CHILDREN'S CARE GOLDEN GATE	5262 GOLDEN GATE PARKWAY	34116
SW FLORIDA REGIONAL MEDICAL CENTER	5580 19TH COURT SW, UNIT 2	34116
CCHD-IMMUNIZATIONS/WIC-GOLDEN GATE PKWY	4945 GOLDEN GATE PARKWAY 102	34116
JOSEPH FERIO FRANCOIS DD	5278 GOLDEN GATE PARKWAY, UNIT 1	34116
COLLIER MEDICAL CENTER	5274 GOLDEN GATE PARKWAY, SUITE 1	34116
GOLDEN GATE FAMILY CLINIC	5475 GOLDEN GATE PARKWAY 7	34116

Facility Name	Address	Zip Code
CLINICA HISPANA	4990 GOLDEN GATE PARKWAY, SUITE 2	34116
ANGEL'S MEDICAL COMPANY	5038 CORONADO PARKWAY	34116
QUALITY MEDICAL CARE	4867 GOLDEN GATE PARKWAY	34116

### Law Enforcement Facilities (Points)

Facility Name	Address	Zip Code
COLLIER COUNTY SHERIFF'S OFFICE - DISTRICT 2 - GOLDEN GATE SUBSTATION	4707 GOLDEN GATE PKWY	34116

### Public and Private Schools (Points)

Facility Name	Address	Zip Code
SAINT JOHN NEUMANN CATHOLIC HIGH SCHOOL INC.	3000 53RD ST SW	34116
GRACE COMMUNITY SCHOOL	5524 19TH COURT SW	34116
GOLDEN TERRACE ELEMENTARY SCHOOL	2965 44TH TER SW	34116
NICAEA ACADEMY	2200 SANTA BARBARA BLVD	34116
GOLDEN GATE ELEMENTARY SCHOOL INTERMEDIATE	5055 20TH PL SW	34116
GOLDEN GATE MIDDLE SCHOOL	2701 48TH TERRACE SW	34116
ST ELIZABETH SETON CATHOLIC SCHOOL	2760 52ND TERR SW	34116
GOLDEN GATE ELEMENTARY SCHOOL	4911 20TH PLACE SW	34116
GOLDEN TERRACE ELEMENTARY SCHOOL	2711 44TH TERRACE SW	34116

### Religious Centers (Points)

Facility Name	Address	Zip Code
VINEYARD COMMUNITY CHURCH	4701 GOLDEN GATE PARKWAY	34116
METHODIST FELLOWSHIP CHURCH	2501 44TH TERRACE SOUTHWEST	34116
FLORIDA TAMPA MISSION	5334 16TH PLACE SOUTHWEST	34116
EVANGELICAL FREE METHODIST CHURCH	4631 SUNSET ROAD	34116
HOPE WESLEYAN CHURCH	4445 17TH COURT SOUTHWEST	34116
GOSPEL ASSEMBLY OF NAPLES	12415 COLLIER BOULEVARD	34116
ST ELIZABETH SETON CATHOLIC	5260 28TH AVENUE SOUTHWEST	34116
ESTATES BAPTIST	2040 SANTA BARBARA BLVD	34116
GOLDEN GATE UNITED METHODIST CHURCH	4300 21ST AVENUE SOUTHWEST	34116
CHURCH OF JESUS CHRIST OF LATTER DAY SAINTS	4935 23RD COURT SOUTHWEST	34116

### Social Services (Geocoded)

Facility Name	Address	Zip Code
COLLIER COUNTY HUNGER AND HOMELESS COALITION	5251 GOLDEN GATE PKWY	34116
GOLDEN GATE WIC CLINIC	4945 GOLDEN GATE PARKWAY	34116

### US Census Places

Facility Name
Golden Gate

---

## Block Groups

The following Census Block Groups were used to calculate demographics for this report.

### 1990 Census Block Groups

120210104033, 120210104031, 120210104037, 120210104036, 120210104032, 120210104035, 120210104034

### 2000 Census Block Groups

120210104111, 120210104131, 120210104094, 120210104112, 120210104102, 120210104091, 120210104081, 120210104093, 120210104095, 120210104092, 120210104101, 120210104103, 120210104113, 120210104082

### 2010 Census Block Groups

120210104082, 120210104192, 120210104103, 120210104101, 120210104191, 120210104113, 120210104201, 120210104111, 120210104102, 120210104112, 120210104081, 120210104203, 120210104202

### 2017 Census Block Groups

120210104113, 120210104101, 120210104081, 120210104191, 120210104201, 120210104203, 120210104103, 120210104102, 120210104202, 120210104111, 120210104112, 120210104082, 120210104192

---

## Data Sources

### Area

The geographic area of the community based on a user-specified community boundary or area of interest (AOI) boundary.

### Jurisdiction

Jurisdiction(s) includes local government boundaries that intersect the community or AOI boundary.

### Demographic Data

Demographic data reported under the headings General Population Trends, Race and Ethnicity Trends, Age Trends, Income Trends, Educational Attainment Trends, Language Trends, and Housing Trends is from the U.S. Decennial Census (1990, 2000) and the American Community Survey (ACS) 5-year estimates from 2006-2010 and 2013-2017. The data was gathered at the block group level for user-specified community boundaries and AOIs, and at the county level for counties. Depending on the dataset, the data represents 100% counts (Census Summary File 1) or sample-based information (Census Summary File 3 or ACS).

### About the Census Data:

User-specified community boundaries and AOIs do not always correspond precisely to block group boundaries. In these instances, adjustment of the geographic area and data for affected block groups is required to estimate the actual population. To improve the accuracy of such estimates in the SDR report, the census block group data was adjusted to exclude all census blocks with a population of two or fewer. These areas were eliminated from the corresponding years' block groups. Next, the portion of the block group that lies outside of the community or AOI boundary was removed. The demographics within each block group were then recalculated, assuming an equal area distribution of the population. Note that there may be areas where there is no population.

Use caution when comparing the 100% count data (Decennial Census) to the sample-based data (ACS). In any given year, about one in 40 or 2.5% of U.S. households will receive the ACS questionnaire. Over any five-year period, about one in eight households will receive the questionnaire, as compared to about one in six that received the long form

questionnaire for the Decennial Census 2000. (Source: <http://mcdc.missouri.edu/pub/data/acs/Readme.shtml>) The U.S. Census Bureau provides help with this process:

<https://www.census.gov/programs-surveys/acs/guidance/comparing-acs-data/2017.html>

Use caution when interpreting changes in Race and Ethnicity over time. Starting with the 2000 Decennial Census, respondents were given a new option of selecting one or more race categories. Also in 2000, the placement of the question about Hispanic origin changed, helping to increase responsiveness to the Hispanic-origin question. Because of these and other changes, the 1990 data on race and ethnicity are not directly comparable with data from later censuses. (Source: <http://www.census.gov/prod/2001pubs/c2kbr01-1.pdf>; <http://www.census.gov/pred/www/rpts/Race%20and%20Ethnicity%20FINAL%20report.pdf>)

The "Minority" calculations are derived from Census and ACS data using both the race and ethnicity responses. On this report, "Minority" refers to individuals who list a race other than White and/or list their ethnicity as Hispanic/Latino. In other words, people who are multi-racial, any single race other than White, or Hispanic/Latino of any race are considered minorities.

Disability data is not included in the 2010 Decennial Census, or the 2006-2010 ACS. This data is available in the 2013-2017 ACS.

Because of changes made to the Census and ACS questions between 1990 and 2017, disability variables should not be compared from year to year. For example: 1) With the 1990 data the disabilities are listed as a "work disability" while this distinction is not made with 2000 or 2017 ACS data; 2) The 2017 ACS data includes the institutionalized population (e.g. persons in prisons and group homes), while this population is not included in 1990 or 2000; 3) the age groupings changed over the years.

Please take the following two concerns into account when viewing this data: 1) With the 1990 data the disabilities are listed as a "work disability" while this distinction is not made with 2000 or 2017 ACS data; 2) The 2017 ACS data includes the institutionalized population (e.g. persons in prisons and group homes), while this population is not included in 1990 or 2000.

The category Bachelor's Degree or Higher under the heading Educational Attainment Trends is a subset of the category High School Graduate or Higher.

Income of households. This includes the income of the householder and all other individuals 15 years old and over in the household, whether they are related to the householder or not. Because many households consist of only one person, average household income is usually less than average family income.

Income of families. In compiling statistics on family income, the incomes of all members 15 years old and over related to the householder are summed and treated as a single amount.

Age Trends median age for 1990 is not available.

### **Land Use Data**

The Land Use information Indicates acreages and percentages for the generalized land use types used to group parcel-specific, existing land use assigned by the county property appraiser office according to the Florida Department of Revenue land use codes.

### **Community Facilities Data**

- Assisted Rental Housing Units - Identifies multifamily rental developments that receive funding assistance under federal, state, and local government programs to offer affordable housing as reported by the Shimberg Center for Housing Studies, University of Florida.
- Mobile Home Parks - Identifies approved or acknowledged mobile home parks reported by the Florida Department of Business and Professional Regulation and Florida Department of Health.

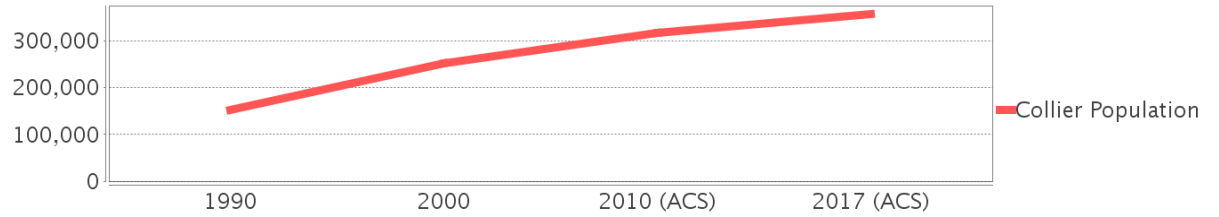
- Migrant Camps - Identifies migrant labor camp facilities inspected by the Florida Department of Health.
- Group Care Facilities - Identifies group care facilities inspected by the Florida Department of Health.
- Community Center and Fraternal Association Facilities - Identifies facilities reported by multiple sources.
- Law Enforcement Correctional Facilities - Identifies facilities reported by multiple sources.
- Cultural Centers - Identifies cultural centers including organizations, buildings, or complexes that promote culture and arts (e.g., aquariums and zoological facilities; arboreta and botanical gardens; dinner theaters; drive-ins; historical places and services; libraries; motion picture theaters; museums and art galleries; performing arts centers; performing arts theaters; planetariums; studios and art galleries; and theater producers stage facilities) reported by multiple sources.
- Fire Department and Rescue Station Facilities - Identifies facilities reported by multiple sources.
- Government Buildings - Identifies local, state, and federal government buildings reported by multiple sources.
- Health Care Facilities - Identifies health care facilities including abortion clinics, dialysis clinics, medical doctors, nursing homes, osteopaths, state laboratories/clinics, and surgicenters/walk-in clinics reported by the Florida Department of Health.
- Hospital Facilities - Identifies hospital facilities reported by multiple sources.
- Law Enforcement Facilities - Identifies law enforcement facilities reported by multiple sources.
- Parks and Recreational Facilities - Identifies parks and recreational facilities reported by multiple sources.
- Religious Center Facilities - Identifies religious centers including churches, temples, synagogues, mosques, chapels, centers, and other types of religious facilities reported by multiple sources.
- Private and Public Schools - Identifies private and public schools reported by multiple sources.
- Social Service Centers - Identifies social service centers reported by multiple sources.
- Veteran Organizations and Facilities

# Collier County Demographic Profile

## General Population Trends - Collier

Description	1990	2000	2010 (ACS)	2017 (ACS)
Total Population	152,099	251,377	316,931	356,774
Total Households	61,703	102,973	119,517	138,131
Average Persons per Acre	0.116	0.192	0.243	0.273
Average Persons per Household	2.465	2.391	3.00	2.55
Average Persons per Family	2.864	2.886	3.252	3.159
Males	75,386	125,618	157,541	175,608
Females	76,713	125,759	159,390	181,166

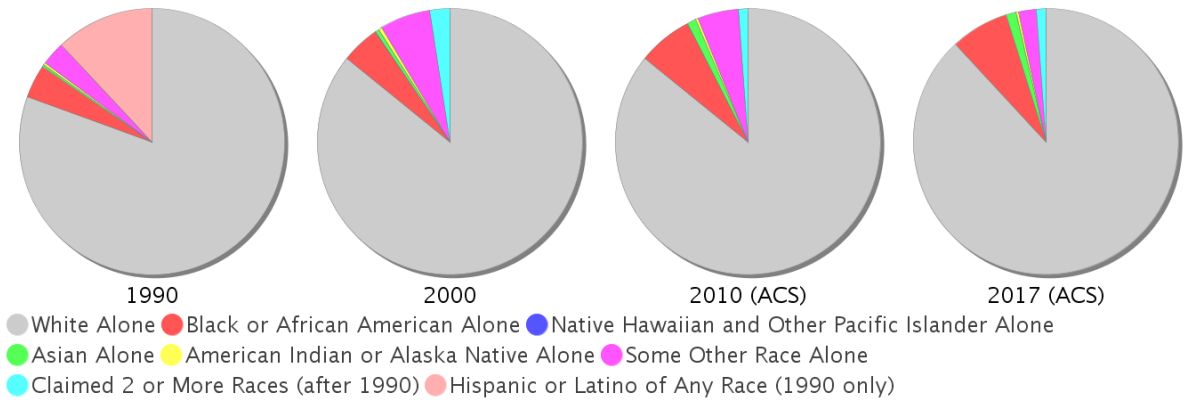
Collier County Population



## Race and Ethnicity Trends - Collier

Description	1990	2000	2010 (ACS)	2017 (ACS)
White Alone	139,073 (91.44%)	215,705 (85.81%)	271,973 (85.81%)	314,272 (88.09%)
Black or African American Alone	6,986 (4.59%)	11,673 (4.64%)	21,020 (6.63%)	25,115 (7.04%)
Native Hawaiian and Other Pacific Islander Alone	(NA)	197 (0.08%)	71 (0.02%)	0 (0.00%)
Asian Alone	533 (0.35%)	1,200 (0.48%)	3,441 (1.09%)	4,552 (1.28%)
American Indian or Alaska Native Alone	428 (0.28%)	1,067 (0.42%)	881 (0.28%)	1,066 (0.30%)
Some Other Race Alone	5,028 (3.31%)	15,404 (6.13%)	15,979 (5.04%)	7,550 (2.12%)
Claimed 2 or More Races	(NA)	6,131 (2.44%)	3,566 (1.13%)	4,219 (1.18%)
Hispanic or Latino of Any Race	20,734 (13.63%)	49,252 (19.59%)	79,741 (25.16%)	96,948 (27.17%)
Not Hispanic or Latino	131,365 (86.37%)	202,125 (80.41%)	237,190 (74.84%)	259,826 (72.83%)
Minority	110,364 (72.56%)	66,314 (26.38%)	110,364 (34.82%)	129,772 (36.37%)

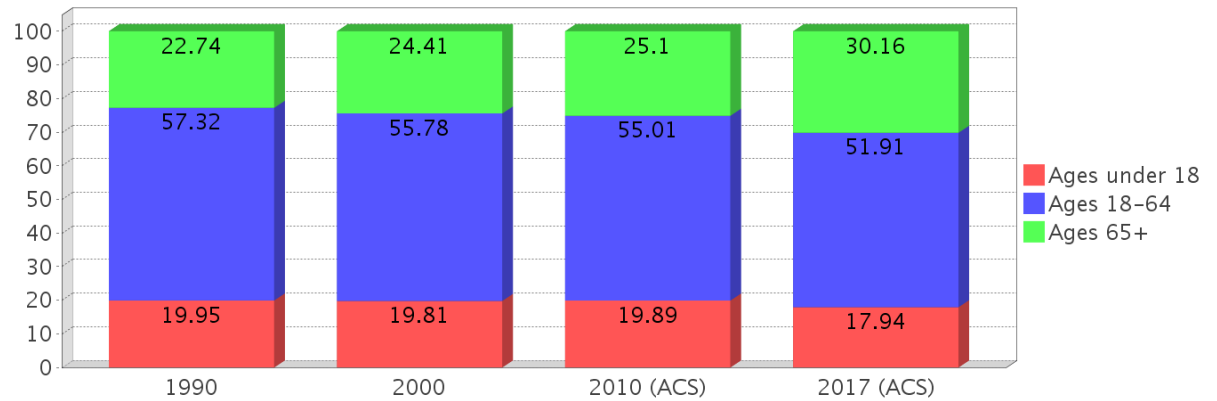
Collier County Race



### Age Trends - Collier

Description	1990	2000	2010 (ACS)	2017 (ACS)
Under Age 5	6.04%	5.29%	5.58%	4.67%
Ages 5-17	13.91%	14.52%	14.32%	13.26%
Ages 18-21	4.24%	3.76%	4.20%	3.81%
Ages 22-29	10.83%	7.96%	7.89%	7.90%
Ages 30-39	14.16%	13.01%	10.77%	9.93%
Ages 40-49	11.32%	12.41%	12.60%	10.76%
Ages 50-64	16.76%	18.64%	19.55%	19.50%
Age 65 and Over	22.74%	24.41%	25.10%	30.16%
-Ages 65-74	14.36%	13.95%	13.62%	15.63%
-Ages 75-84	6.95%	8.29%	8.66%	10.77%
-Age 85 and Over	1.43%	2.17%	2.82%	3.76%
Median Age	NA	44	46	50

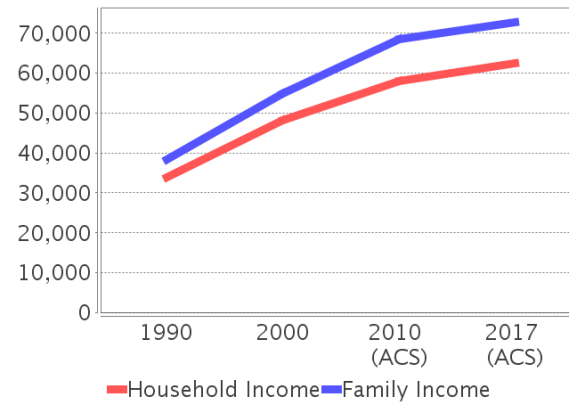
Percentage Population by Age Group - Collier



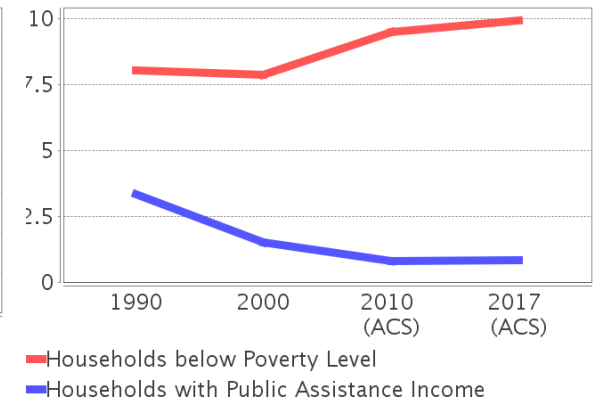
### Income Trends - Collier

Description	1990	2000	2010 (ACS)	2017 (ACS)
Median Household Income	\$34,001	\$48,289	\$58,106	\$62,407
Median Family Income	\$38,428	\$54,816	\$68,556	\$72,804
Population below Poverty Level	10.51%	10.26%	12.15%	12.85%
Households below Poverty Level	8.04%	7.86%	9.48%	9.93%
Households with Public Assistance Income	3.35%	1.51%	0.81%	0.84%

Income Trends



Poverty and Public Assistance



### Disability Trends - Collier

See the Data Sources section below for an explanation about the differences in disability data among the various years.

Description	1990	2000	2010 (ACS)	2017 (ACS)
Population 16 To 64 Years with a disability	6,274 (5.10%)	31,084 (13.18%)	NA (NA)	NA (NA)
Population 20 To 64 Years with a disability	NA (NA)	NA (NA)	NA (NA)	12,200 (6.90%)

## Educational Attainment Trends - Collier

Age 25 and Over

Description	1990	2000	2010 (ACS)	2017 (ACS)
Less than 9th Grade	9,227 (8.36%)	14,918 (8.05%)	16,714 (7.20%)	19,628 (7.32%)
9th to 12th Grade, No Diploma	13,902 (12.60%)	18,904 (10.20%)	18,556 (8.00%)	16,571 (6.18%)
High School Graduate or Higher	87,179 (79.03%)	151,535 (81.75%)	196,770 (84.80%)	232,115 (86.51%)
Bachelor's Degree or Higher	24,637 (22.33%)	51,757 (27.92%)	71,508 (30.82%)	93,730 (34.93%)

## Language Trends - Collier

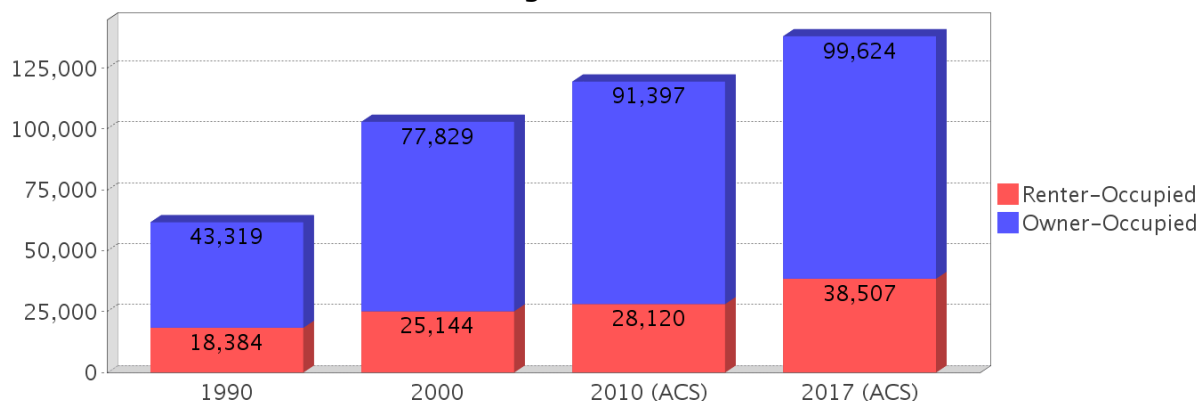
Age 5 and Over

Description	1990	2000	2010 (ACS)	2017 (ACS)
Speaks English Well	5,682 (3.97%)	12,761 (5.36%)	18,418 (6.15%)	16,103 (4.73%)
Speaks English Not Well	NA (NA)	12,354 (5.19%)	20,900 (6.98%)	20,927 (6.15%)
Speaks English Not at All	NA (NA)	7,642 (3.21%)	9,711 (3.24%)	11,871 (3.49%)
Speaks English Not Well or Not at All	6,005 (4.20%)	19,996 (8.40%)	30,611 (10.23%)	32,798 (9.64%)

## Housing Trends - Collier

Description	1990	2000	2010 (ACS)	2017 (ACS)
Total	94,165	144,536	194,529	207,403
Units per Acre	0.072	0.111	0.149	0.159
Single-Family Units	32,425	65,362	89,652	95,685
Multi-Family Units	22,071	67,282	93,430	101,353
Mobile Home Units	6,819	10,772	11,153	10,217
Owner-Occupied Units	43,319	77,829	91,397	99,624
Renter-Occupied Units	18,384	25,144	28,120	38,507
Vacant Units	32,462	41,563	75,012	69,272
Median Housing Value	\$121,400	\$149,000	\$357,400	\$316,200
Occupied Housing Units w/No Vehicle	3,238 (5.25%)	4,999 (4.85%)	5,123 (4.29%)	7,269 (5.26%)

## Housing Tenure - Collier



---

## County Data Sources

Demographic data reported is from the U.S. Decennial Census (1990, 2000) and the American Community Survey (ACS) 5-year estimates from 2006-2010 and 2013-2017. The data was gathered at the county level. Depending on the dataset, the data represents 100% counts (Census Summary File 1) or sample-based information (Census Summary File 3 or ACS).

### About the Census Data:

Use caution when comparing the 100% count data (Decennial Census) to the sample-based data (ACS). In any given year, about one in 40 or 2.5% of U.S. households will receive the ACS questionnaire. Over any five-year period, about one in eight households will receive the questionnaire, as compared to about one in six that received the long form questionnaire for the Decennial Census 2000. (Source: <http://mcdc.missouri.edu/pub/data/acs/Readme.shtml>) The U.S. Census Bureau provides help with this process:

<https://www.census.gov/programs-surveys/acs/guidance/comparing-acs-data/2017.html>

Use caution when interpreting changes in Race and Ethnicity over time. Starting with the 2000 Decennial Census, respondents were given a new option of selecting one or more race categories. Also in 2000, the placement of the question about Hispanic origin changed, helping to increase responsiveness to the Hispanic-origin question. Because of these and other changes, the 1990 data on race and ethnicity are not directly comparable with data from later censuses. (Source: <http://www.census.gov/prod/2001pubs/c2kbr01-1.pdf>;  
<http://www.census.gov/pred/www/rpts/Race%20and%20Ethnicity%20FINAL%20report.pdf>)

The "Minority" calculations are derived from Census and ACS data using both the race and ethnicity responses. On this report, "Minority" refers to individuals who list a race other than White and/or list their ethnicity as Hispanic/Latino. In other words, people who are multi-racial, any single race other than White, or Hispanic/Latino of any race are considered minorities.

Disability data is not included in the 2010 Decennial Census, or the 2006-2010 ACS. This data is available in the 2013-2017 ACS.

Because of changes made to the Census and ACS questions between 1990 and 2017, disability variables should not be compared from year to year. For example: 1) With the 1990 data the disabilities are listed as a "work disability" while this distinction is not made with 2000 or 2017 ACS data; 2) The 2017 ACS data includes the institutionalized population (e.g. persons in prisons and group homes), while this population is not included in 1990 or 2000; 3) the age groupings changed over the years.

Please take the following two concerns into account when viewing this data: 1) With the 1990 data the disabilities are listed as a "work disability" while this distinction is not made with 2000 or 2017 ACS data; 2) The 2017 ACS data includes the institutionalized population (e.g. persons in prisons and group homes), while this population is not included in 1990 or 2000.

source:

<https://www.census.gov/people/disability/methodology/acs.html>

<https://www.census.gov/population/www/cen2000/90vs00/index.html>

The category Bachelor's Degree or Higher under the heading Educational Attainment Trends is a subset of the category High School Graduate or Higher.

---

## Metadata

- Community and Fraternal Centers [https://etdmpub.florida.gov/metadata/gc\\_communitycenter.htm](https://etdmpub.florida.gov/metadata/gc_communitycenter.htm)
- Correctional Facilities in Florida [https://etdmpub.florida.gov/metadata/gc\\_correctional.htm](https://etdmpub.florida.gov/metadata/gc_correctional.htm)
- Cultural Centers in Florida [https://etdmpub.florida.gov/metadata/gc\\_culturecenter.htm](https://etdmpub.florida.gov/metadata/gc_culturecenter.htm)
- Fire Department and Rescue Station Facilities in Florida [https://etdmpub.florida.gov/metadata/gc\\_firestat.htm](https://etdmpub.florida.gov/metadata/gc_firestat.htm)
- Local, State, and Federal Government Buildings in Florida [https://etdmpub.florida.gov/metadata/gc\\_govbuild.htm](https://etdmpub.florida.gov/metadata/gc_govbuild.htm)
- Florida Health Care Facilities [https://etdmpub.florida.gov/metadata/gc\\_health.htm](https://etdmpub.florida.gov/metadata/gc_health.htm)
- Hospital Facilities in Florida [https://etdmpub.florida.gov/metadata/gc\\_hospitals.htm](https://etdmpub.florida.gov/metadata/gc_hospitals.htm)
- Law Enforcement Facilities in Florida [https://etdmpub.florida.gov/metadata/gc\\_lawenforce.htm](https://etdmpub.florida.gov/metadata/gc_lawenforce.htm)
- Florida Parks and Recreational Facilities [https://etdmpub.florida.gov/metadata/gc\\_parks.htm](https://etdmpub.florida.gov/metadata/gc_parks.htm)
- Religious Centers [https://etdmpub.florida.gov/metadata/gc\\_religion.htm](https://etdmpub.florida.gov/metadata/gc_religion.htm)
- Florida Public and Private Schools [https://etdmpub.florida.gov/metadata/gc\\_schools.htm](https://etdmpub.florida.gov/metadata/gc_schools.htm)
- Social Service Centers [https://etdmpub.florida.gov/metadata/gc\\_socialservice.htm](https://etdmpub.florida.gov/metadata/gc_socialservice.htm)
- Assisted Rental Housing Units in Florida [https://etdmpub.florida.gov/metadata/gc\\_assisted\\_housing.htm](https://etdmpub.florida.gov/metadata/gc_assisted_housing.htm)
- Group Care Facilities <https://etdmpub.florida.gov/metadata/groupcare.htm>
- Mobile Home Parks in Florida [https://etdmpub.florida.gov/metadata/gc\\_mobilehomes.htm](https://etdmpub.florida.gov/metadata/gc_mobilehomes.htm)
- Migrant Camps in Florida <https://etdmpub.florida.gov/metadata/migrant.htm>
- Veteran Organizations and Facilities [https://etdmpub.florida.gov/metadata/gc\\_veterans.htm](https://etdmpub.florida.gov/metadata/gc_veterans.htm)
- Generalized Land Use - Florida DOT District 1 [https://etdmpub.florida.gov/metadata/d1\\_lu\\_gen.htm](https://etdmpub.florida.gov/metadata/d1_lu_gen.htm)
- Census Block Groups in Florida [https://etdmpub.florida.gov/metadata/e2\\_cenacs\\_cci.htm](https://etdmpub.florida.gov/metadata/e2_cenacs_cci.htm)
- 1990 Census Block Groups in Florida [https://etdmpub.florida.gov/metadata/e2\\_cenblkgrp\\_1990\\_cci.htm](https://etdmpub.florida.gov/metadata/e2_cenblkgrp_1990_cci.htm)
- 2000 Census Block Groups in Florida [https://etdmpub.florida.gov/metadata/e2\\_cenblkgrp\\_2000\\_cci.htm](https://etdmpub.florida.gov/metadata/e2_cenblkgrp_2000_cci.htm)
- 2010 Census Block Groups in Florida [https://etdmpub.florida.gov/metadata/e2\\_cenblkgrp\\_2010\\_cci.htm](https://etdmpub.florida.gov/metadata/e2_cenblkgrp_2010_cci.htm)