

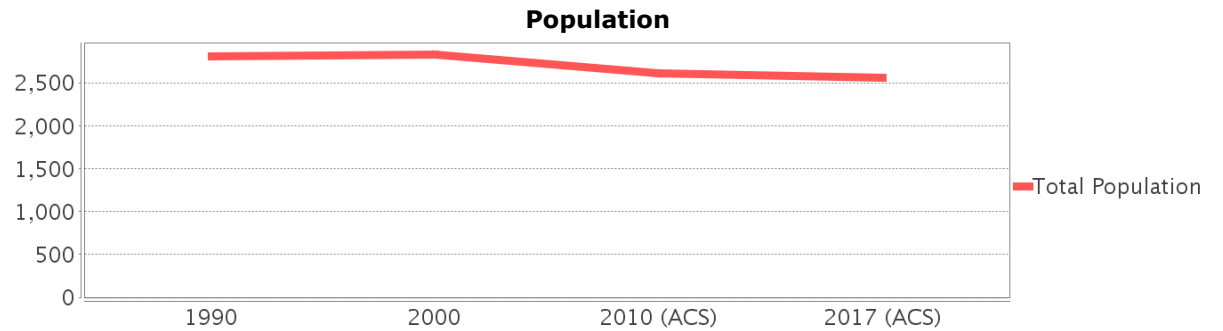
# Sociocultural Data Report

## Harlem

**Area:** 1.062 square miles  
**Jurisdiction(s):** Cities: NA  
 Counties: Hendry

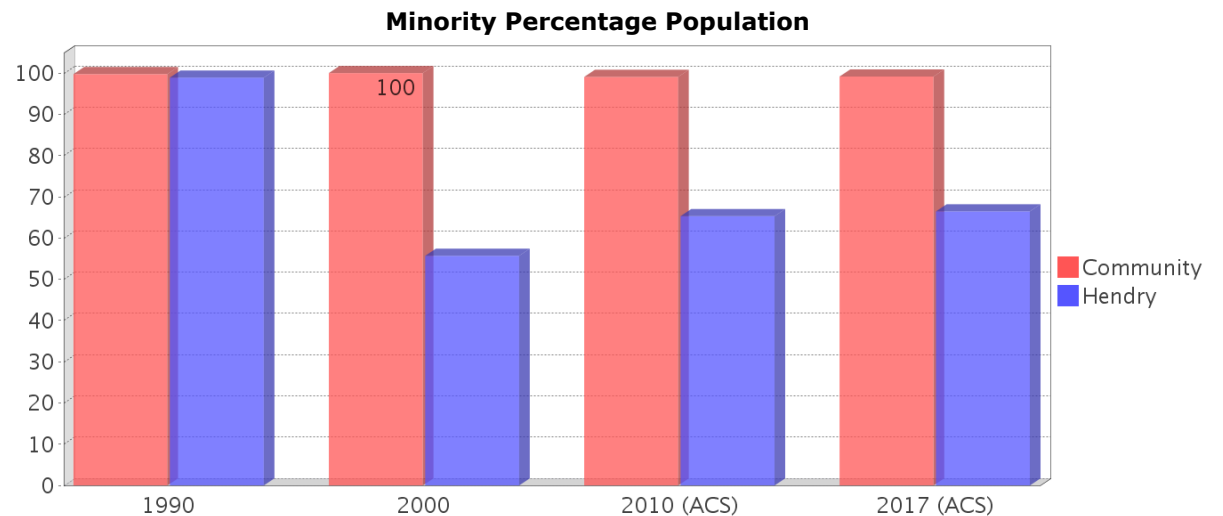
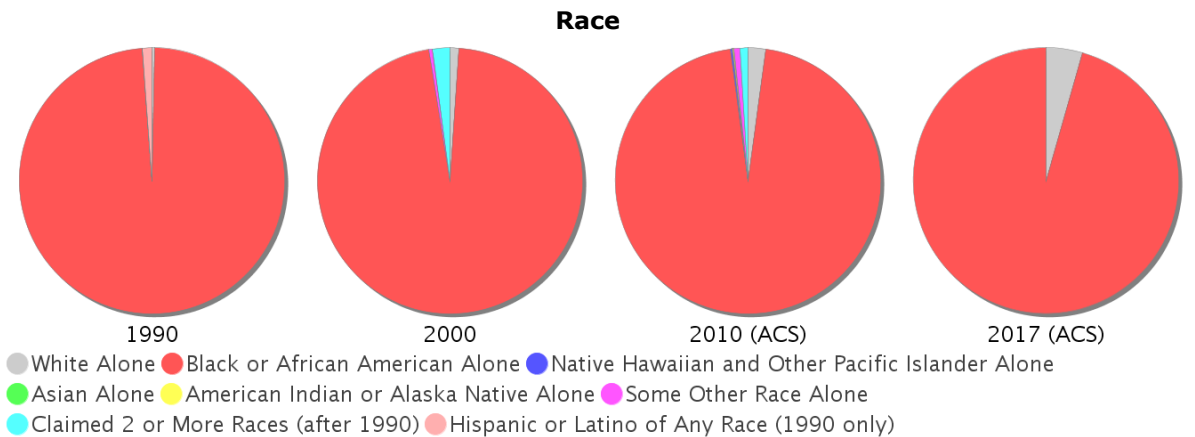
## General Population Trends

Description	1990	2000	2010 (ACS)	2017 (ACS)
Total Population	2,810	2,832	2,612	2,564
Total Households	805	868	867	865
Average Persons per Acre	12.26	3.85	3.31	3.07
Average Persons per Household	3.50	3.07	3.00	3.01
Average Persons per Family	4.22	3.53	3.33	3.31
Males	1,339	1,415	1,200	1,230
Females	1,471	1,418	1,412	1,334



## Race and Ethnicity Trends

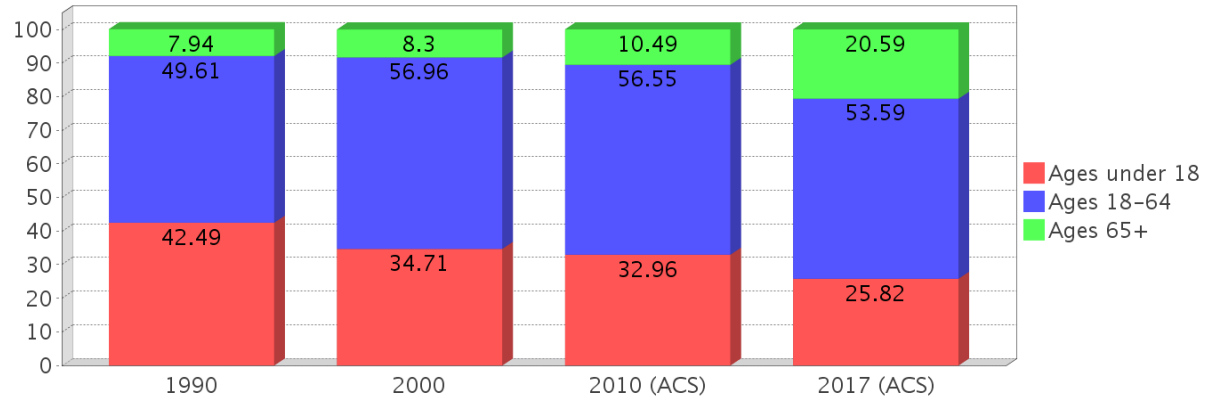
Description	1990	2000	2010 (ACS)	2017 (ACS)
White Alone	9 (0.32%)	30 (1.06%)	56 (2.14%)	113 (4.41%)
Black or African American Alone	2,799 (99.61%)	2,730 (96.40%)	2,501 (95.75%)	2,451 (95.59%)
Native Hawaiian and Other Pacific Islander Alone	0 (0.00%)	0 (0.00%)	6 (0.23%)	0 (0.00%)
Asian Alone	0 (0.00%)	0 (0.00%)	1 (0.04%)	0 (0.00%)
American Indian or Alaska Native Alone	1 (0.04%)	0 (0.00%)	4 (0.15%)	0 (0.00%)
Some Other Race Alone	1 (0.04%)	13 (0.46%)	18 (0.69%)	0 (0.00%)
Claimed 2 or More Races	NA (NA)	59 (2.08%)	26 (1.00%)	0 (0.00%)
Hispanic or Latino of Any Race	32 (1.14%)	34 (1.20%)	81 (3.10%)	92 (3.59%)
Not Hispanic or Latino	2,778 (98.86%)	2,798 (98.80%)	2,531 (96.90%)	2,472 (96.41%)
Minority	2,803 (99.75%)	2,832 (100.00%)	2,588 (99.08%)	2,543 (99.18%)



### Age Trends

Description	1990	2000	2010 (ACS)	2017 (ACS)
Under Age 5	12.21%	8.55%	9.19%	4.95%
Ages 5-17	30.28%	26.17%	23.77%	20.87%
Ages 18-21	6.44%	9.50%	7.04%	4.95%
Ages 22-29	10.60%	14.16%	9.65%	10.26%
Ages 30-39	13.42%	13.35%	10.87%	8.42%
Ages 40-49	8.54%	11.55%	11.83%	9.09%
Ages 50-64	10.60%	8.40%	17.15%	20.87%
Age 65 and Over	7.94%	8.30%	10.49%	20.59%
-Ages 65-74	5.23%	4.13%	6.58%	13.18%
-Ages 75-84	2.28%	3.35%	3.18%	4.91%
-Age 85 and Over	0.46%	0.81%	0.73%	2.50%
Median Age	NA	26	32	38

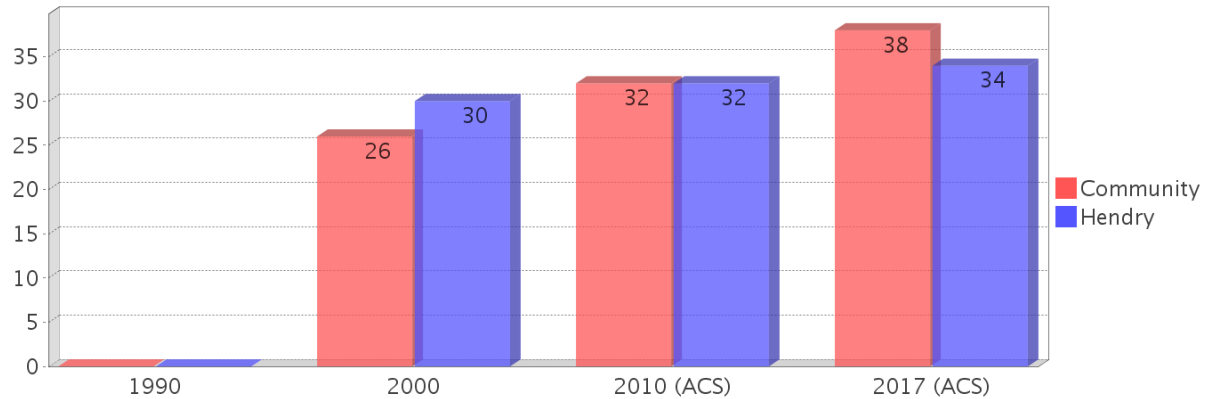
Percentage Population by Age Group



### Income Trends

Description	1990	2000	2010 (ACS)	2017 (ACS)
Median Household Income	\$14,235	\$21,916	\$20,219	\$36,552
Median Family Income	\$13,235	\$22,560	\$21,215	\$35,517
Population below Poverty Level	37.58%	40.43%	55.36%	36.15%
Households below Poverty Level	36.77%	39.52%	56.40%	32.14%
Households with Public Assistance Income	21.37%	9.33%	8.19%	18.84%

Median Age Comparison

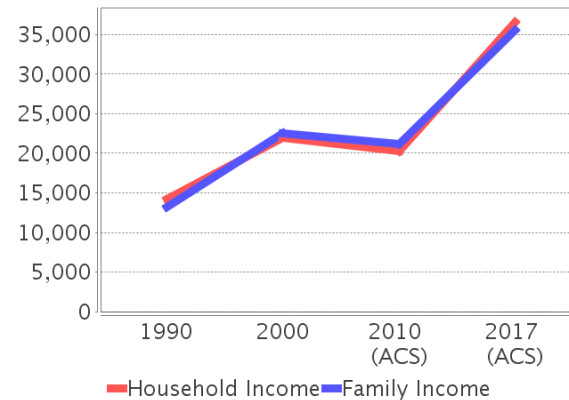


### Disability Trends

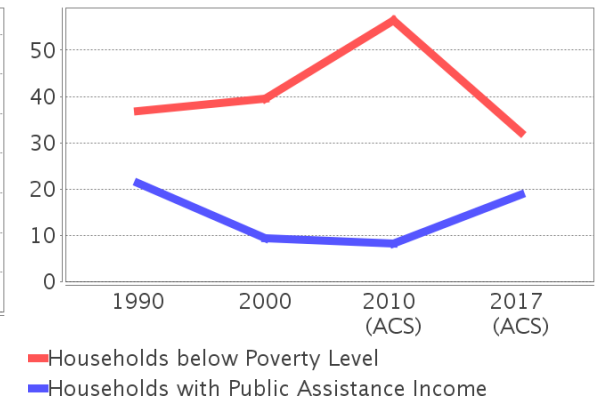
See the Data Sources section below for an explanation about the differences in disability data among the various years.

Description	1990	2000	2010 (ACS)	2017 (ACS)
Population 16 To 64 Years with a disability	210 (12.04%)	387 (14.94%)	(NA)	(NA)
Population 20 To 64 Years with a disability	(NA)	(NA)	(NA)	290 (21.11%)

Income Trends



Poverty and Public Assistance



## Educational Attainment Trends

Age 25 and Over

Description	1990	2000	2010 (ACS)	2017 (ACS)
Less than 9th Grade	384 (28.66%)	249 (17.56%)	94 (7.26%)	36 (2.12%)
9th to 12th Grade, No Diploma	435 (32.46%)	493 (34.77%)	281 (21.70%)	378 (22.30%)
High School Graduate or Higher	521 (38.88%)	676 (47.67%)	920 (71.04%)	1,281 (75.58%)
Bachelor's Degree or Higher	53 (3.96%)	34 (2.40%)	59 (4.56%)	108 (6.37%)

## Language Trends

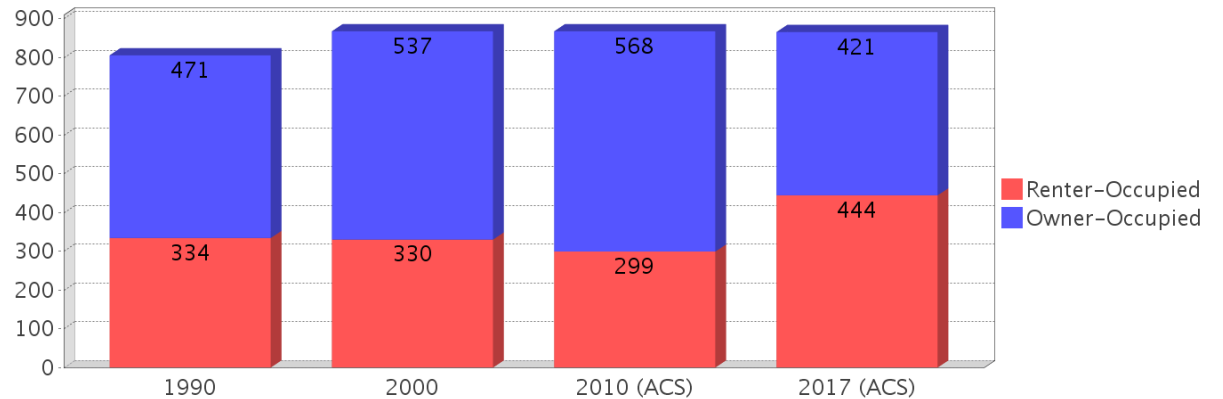
Age 5 and Over

Description	1990	2000	2010 (ACS)	2017 (ACS)
Speaks English Well	9 (0.37%)	5 (0.19%)	19 (0.73%)	0 (0.00%)
Speaks English Not Well	NA (NA)	16 (0.62%)	0 (0.00%)	70 (2.87%)
Speaks English Not at All	NA (NA)	0 (0.00%)	0 (0.00%)	0 (0.00%)
Speaks English Not Well or Not at All	8 (0.33%)	16 (0.62%)	0 (0.00%)	70 (2.87%)

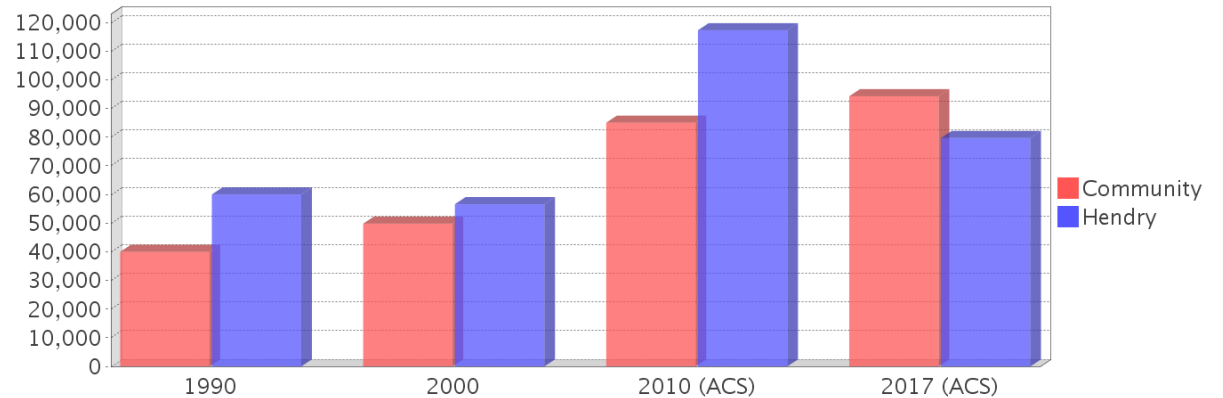
## Housing Trends

Description	1990	2000	2010 (ACS)	2017 (ACS)
Total	900	920	951	971
Units per Acre	3.56	1.41	1.58	1.61
Single-Family Units	542	558	846	613
Multi-Family Units	80	119	153	105
Mobile Home Units	179	242	113	253
Owner-Occupied Units	471	537	568	421
Renter-Occupied Units	334	330	299	444
Vacant Units	95	52	84	106
Median Housing Value	\$40,000	\$49,800	\$85,050	\$94,300
Occupied Housing Units w/No Vehicle	255 (31.68%)	182 (20.97%)	216 (24.91%)	41 (4.74%)

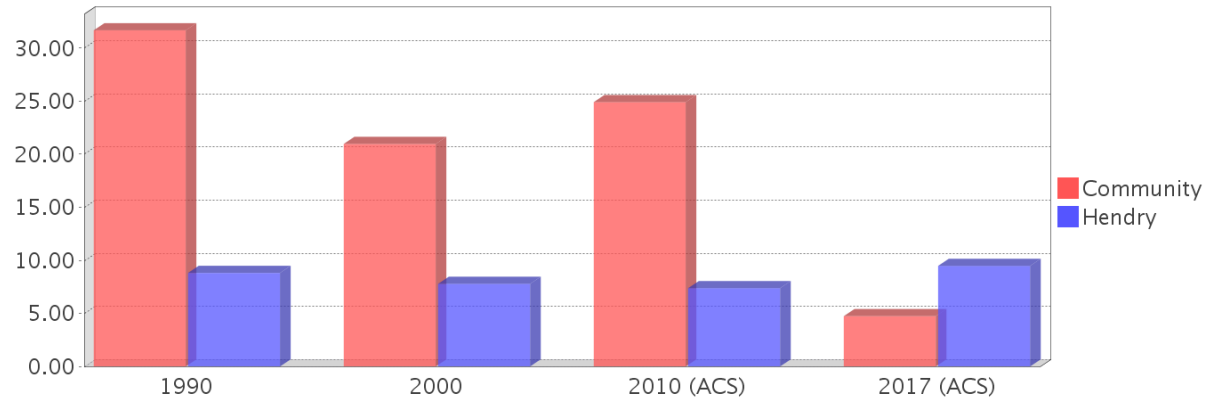
## Housing Tenure



## Median Housing Value Comparison

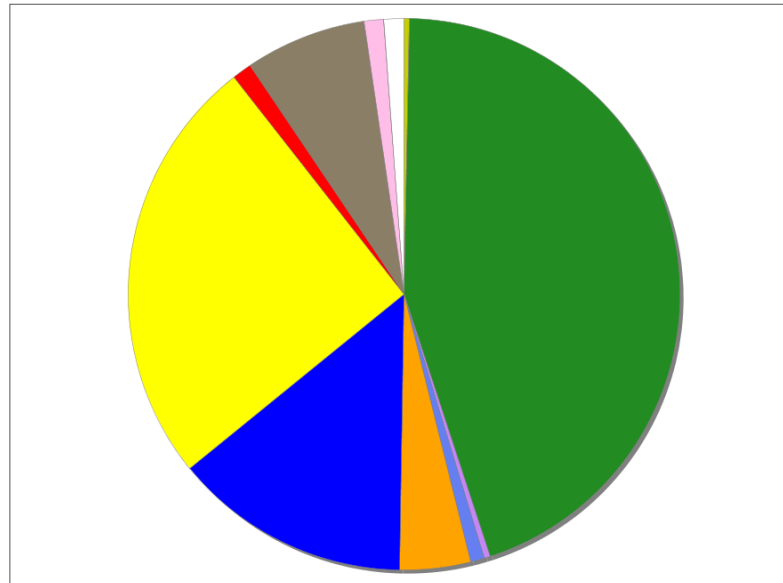


## Occupied Units With No Vehicles Available



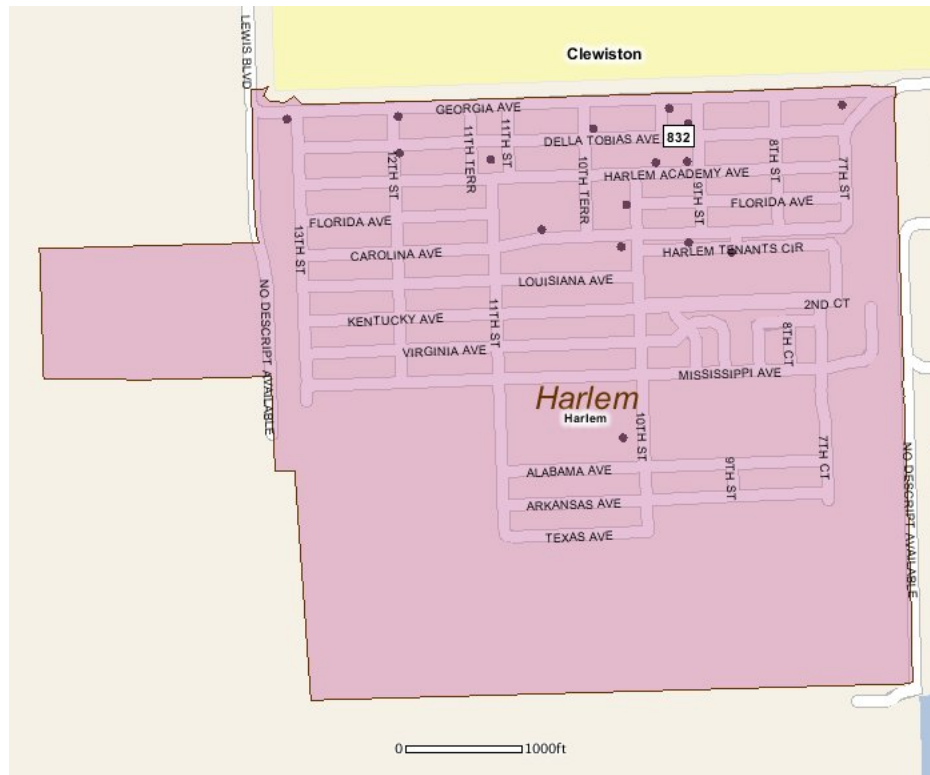
## Existing Land Use

Land Use Type	Acres	Percentage
Acreage Not Zoned For Agriculture	2	0.29%
Agricultural	270	39.71%
Centrally Assessed	0	0.00%
Industrial	2	0.29%
Institutional	5	0.74%
Mining	0	0.00%
Other	25	3.68%
Public/Semi-Public	84	12.35%
Recreation	0	0.00%
Residential	153	22.50%
Retail/Office	7	1.03%
Row	0	0.00%
Vacant Residential	43	6.32%
Vacant Nonresidential	7	1.03%
Water	0	0.00%
Parcels With No Values	7	1.03%



- Acreage Not Zoned For Agriculture
- Agricultural
- Centrally Assessed
- Industrial
- Institutional
- Mining
- Other
- Public/Semi-Public
- Recreation
- Residential
- Retail/Office
- Row
- Vacant Residential
- Vacant Nonresidential
- Water
- Parcels With No Values

## Location Maps



---

## Community Facilities

The community facilities information below is useful in a variety of ways for environmental evaluations. These community resources should be evaluated for potential sociocultural effects, such as accessibility and relocation potential. The facility types may indicate the types of population groups present in the project study area. Facility staff and leaders can be sources of community information such as who uses the facility and how it is used. Additionally, community facilities are potential public meeting venues.

### Assisted Housing (Points)

Facility Name	Address	Zip Code
HARLEM GARDENS APARTMENTS	700 HARLEM TENANTS CIRCLE	33440

### Cultural Centers (Points)

Facility Name	Address	Zip Code
HARLEM LIBRARY	1010 HARLEM ACADEMY AVE	33440

### Florida Parks and Recreational Facilities (Points)

Facility Name	Address	Zip Code
HARLEM COMMUNITY CIVIC PARK	1117 HARLEM ACADEMY AVE	33440
HARLEM PLAYGROUND	4920 CAROLINA AVE	33440
HENDRY COUNTY 10TH STREET PARK	2550 10TH ST	33440
HARLEM SPORTS COMPLEX	2001 10TH TER	33440

### Religious Centers (Points)

Facility Name	Address	Zip Code
TABERNACLE WITNESS DELIVERANCE	901 HARLEM ACADEMY AVENUE	33440
GREATER FRIENDSHIP BAPTIST	901 DELLA TOBIAS AVENUE	33440
CHURCH OF GOD IN CHRIST	1180 GEORGIA AVE	33440
MOUNT CALVARY BAPTIST CHURCH	702 GEORGIA AVENUE	33440
COMMUNITY FELLOWSHP OF CLEWISTON	1701 13TH ST	33440
NEW BETHEL AME CHURCH	959 DELLA TOBIAS AVENUE	33440
TRUEVINE CHURCH	2100 10TH ST	33440
GOSPEL LIGHTHOUSE CHURCH	924 GEORGIA AVE	33440
CHURCH OF THE FIRST BORN	1182 DELLA TOBIAS AVE	33440
GLORIOUS COMMUNITY HOLINESS	925 HARLEM ACADEMY AVENUE	33440

### US Census Places

Facility Name
Harlem

---

## Block Groups

The following Census Block Groups were used to calculate demographics for this report.

### 1990 Census Block Groups

120519602003, 120519602004

### 2000 Census Block Groups

120510002002, 120510002004, 120510002003

### 2010 Census Block Groups

120510002004, 120510002002, 120510002003

### 2017 Census Block Groups

120510002002, 120510002004, 120510002003

---

## Data Sources

### Area

The geographic area of the community based on a user-specified community boundary or area of interest (AOI) boundary.

### Jurisdiction

Jurisdiction(s) includes local government boundaries that intersect the community or AOI boundary.

### Demographic Data

Demographic data reported under the headings General Population Trends, Race and Ethnicity Trends, Age Trends, Income Trends, Educational Attainment Trends, Language Trends, and Housing Trends is from the U.S. Decennial Census (1990, 2000) and the American Community Survey (ACS) 5-year estimates from 2006-2010 and 2013-2017. The data was gathered at the block group level for user-specified community boundaries and AOIs, and at the county level for counties. Depending on the dataset, the data represents 100% counts (Census Summary File 1) or sample-based information (Census Summary File 3 or ACS).

### About the Census Data:

User-specified community boundaries and AOIs do not always correspond precisely to block group boundaries. In these instances, adjustment of the geographic area and data for affected block groups is required to estimate the actual population. To improve the accuracy of such estimates in the SDR report, the census block group data was adjusted to exclude all census blocks with a population of two or fewer. These areas were eliminated from the corresponding years' block groups. Next, the portion of the block group that lies outside of the community or AOI boundary was removed. The demographics within each block group were then recalculated, assuming an equal area distribution of the population. Note that there may be areas where there is no population.

Use caution when comparing the 100% count data (Decennial Census) to the sample-based data (ACS). In any given year, about one in 40 or 2.5% of U.S. households will receive the ACS questionnaire. Over any five-year period, about one in eight households will receive the questionnaire, as compared to about one in six that received the long form questionnaire for the Decennial Census 2000. (Source: <http://mcdc.missouri.edu/pub/data/acs/Readme.shtml>) The U.S. Census Bureau provides help with this process:

<https://www.census.gov/programs-surveys/acs/guidance/comparing-acs-data/2017.html>

Use caution when interpreting changes in Race and Ethnicity over time. Starting with the 2000 Decennial Census, respondents were given a new option of selecting one or more race categories. Also in 2000, the placement of the question about Hispanic origin changed, helping to increase responsiveness to the Hispanic-origin question. Because of these and other changes, the 1990 data on race and ethnicity are not directly comparable with data from later censuses. (Source: <http://www.census.gov/prod/2001pubs/c2kbr01-1.pdf>; <http://www.census.gov/pred/www/rpts/Race%20and%20Ethnicity%20FINAL%20report.pdf>)

The "Minority" calculations are derived from Census and ACS data using both the race and ethnicity responses. On this report, "Minority" refers to individuals who list a race other than White and/or list their ethnicity as Hispanic/Latino. In other words, people who are multi-racial, any single race other than White, or Hispanic/Latino of any race are considered minorities.

Disability data is not included in the 2010 Decennial Census, or the 2006-2010 ACS. This data is available in the 2013-2017 ACS.

Because of changes made to the Census and ACS questions between 1990 and 2017, disability variables should not be compared from year to year. For example: 1) With the 1990 data the disabilities are listed as a "work disability" while this distinction is not made with 2000 or 2017 ACS data; 2) The 2017 ACS data includes the institutionalized population (e.g. persons in prisons and group homes), while this population is not included in 1990 or 2000; 3) the age groupings changed over the years.

Please take the following two concerns into account when viewing this data: 1) With the 1990 data the disabilities are listed as a "work disability" while this distinction is not made with 2000 or 2017 ACS data; 2) The 2017 ACS data includes the institutionalized population (e.g. persons in prisons and group homes), while this population is not included in 1990 or 2000.

The category Bachelor's Degree or Higher under the heading Educational Attainment Trends is a subset of the category High School Graduate or Higher.

Income of households. This includes the income of the householder and all other individuals 15 years old and over in the household, whether they are related to the householder or not. Because many households consist of only one person, average household income is usually less than average family income.

Income of families. In compiling statistics on family income, the incomes of all members 15 years old and over related to the householder are summed and treated as a single amount.

Age Trends median age for 1990 is not available.

### **Land Use Data**

The Land Use information Indicates acreages and percentages for the generalized land use types used to group parcel-specific, existing land use assigned by the county property appraiser office according to the Florida Department of Revenue land use codes.

### **Community Facilities Data**

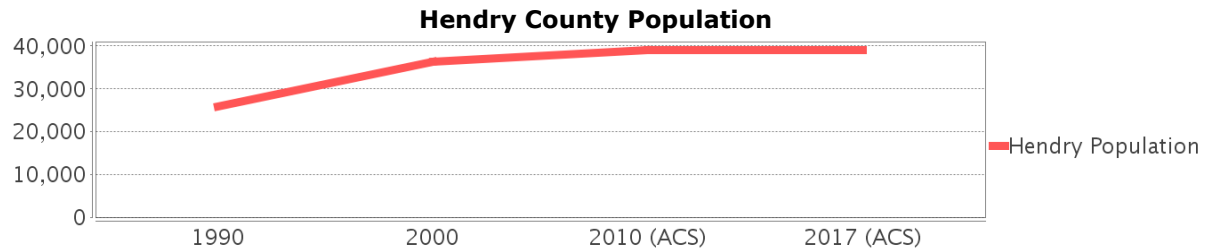
- Assisted Rental Housing Units - Identifies multifamily rental developments that receive funding assistance under federal, state, and local government programs to offer affordable housing as reported by the Shimberg Center for Housing Studies, University of Florida.
- Mobile Home Parks - Identifies approved or acknowledged mobile home parks reported by the Florida Department of Business and Professional Regulation and Florida Department of Health.
- Migrant Camps - Identifies migrant labor camp facilities inspected by the Florida Department of Health.
- Group Care Facilities - Identifies group care facilities inspected by the Florida Department of Health.

- Community Center and Fraternal Association Facilities - Identifies facilities reported by multiple sources.
- Law Enforcement Correctional Facilities - Identifies facilities reported by multiple sources.
- Cultural Centers - Identifies cultural centers including organizations, buildings, or complexes that promote culture and arts (e.g., aquariums and zoological facilities; arboreta and botanical gardens; dinner theaters; drive-ins; historical places and services; libraries; motion picture theaters; museums and art galleries; performing arts centers; performing arts theaters; planetariums; studios and art galleries; and theater producers stage facilities) reported by multiple sources.
- Fire Department and Rescue Station Facilities - Identifies facilities reported by multiple sources.
- Government Buildings - Identifies local, state, and federal government buildings reported by multiple sources.
- Health Care Facilities - Identifies health care facilities including abortion clinics, dialysis clinics, medical doctors, nursing homes, osteopaths, state laboratories/clinics, and surgicenters/walk-in clinics reported by the Florida Department of Health.
- Hospital Facilities - Identifies hospital facilities reported by multiple sources.
- Law Enforcement Facilities - Identifies law enforcement facilities reported by multiple sources.
- Parks and Recreational Facilities - Identifies parks and recreational facilities reported by multiple sources.
- Religious Center Facilities - Identifies religious centers including churches, temples, synagogues, mosques, chapels, centers, and other types of religious facilities reported by multiple sources.
- Private and Public Schools - Identifies private and public schools reported by multiple sources.
- Social Service Centers - Identifies social service centers reported by multiple sources.
- Veteran Organizations and Facilities

# Hendry County Demographic Profile

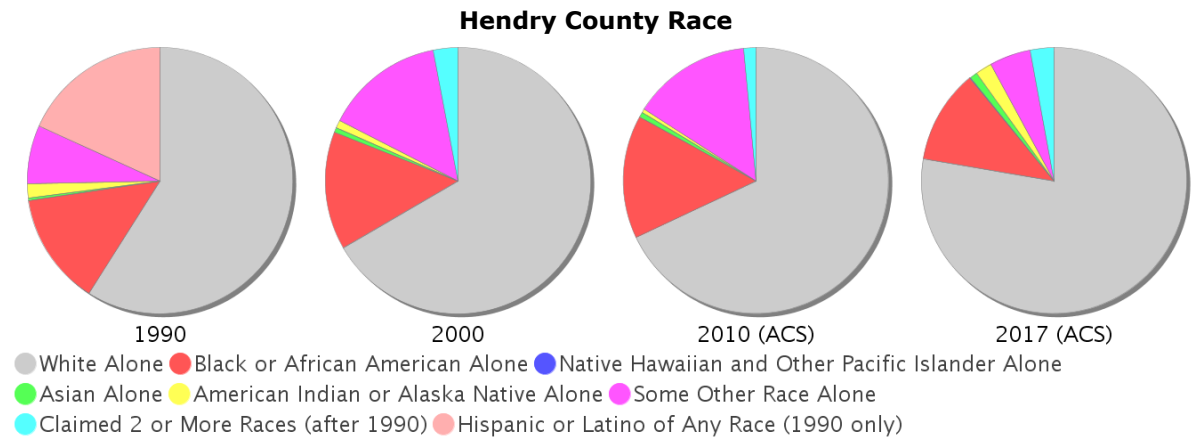
## General Population Trends - Hendry

Description	1990	2000	2010 (ACS)	2017 (ACS)
Total Population	25,773	36,210	39,030	39,064
Total Households	8,402	10,850	11,200	12,098
Average Persons per Acre	0.034	0.048	0.051	0.051
Average Persons per Household	3.067	3.085	3.00	3.07
Average Persons per Family	3.465	3.608	3.639	3.834
Males	13,058	20,018	20,861	20,716
Females	12,715	16,192	18,169	18,348



## Race and Ethnicity Trends - Hendry

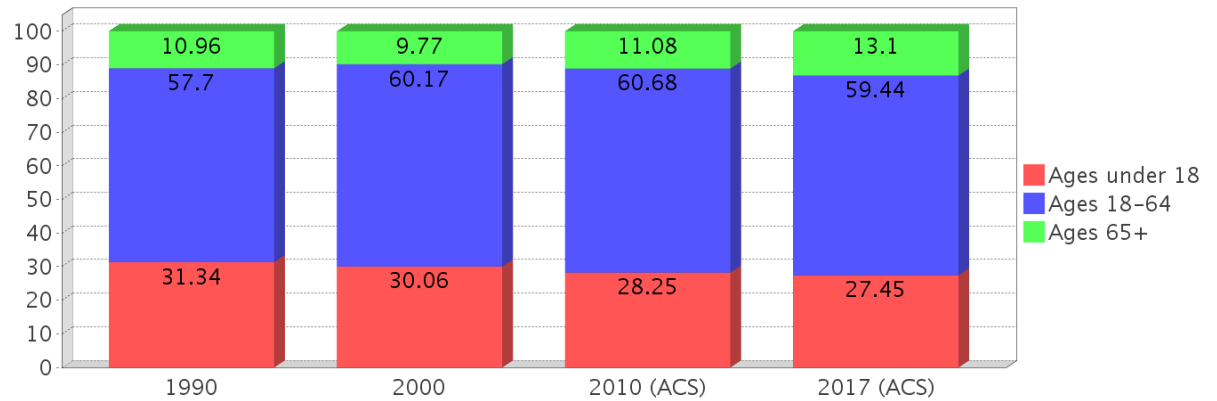
Description	1990	2000	2010 (ACS)	2017 (ACS)
White Alone	18,592 (72.14%)	24,123 (66.62%)	26,524 (67.96%)	30,341 (77.67%)
Black or African American Alone	4,311 (16.73%)	5,189 (14.33%)	5,874 (15.05%)	4,444 (11.38%)
Native Hawaiian and Other Pacific Islander Alone	(NA)	0 (0.00%)	0 (0.00%)	47 (0.12%)
Asian Alone	97 (0.38%)	224 (0.62%)	241 (0.62%)	342 (0.88%)
American Indian or Alaska Native Alone	543 (2.11%)	330 (0.91%)	161 (0.41%)	791 (2.02%)
Some Other Race Alone	2,228 (8.64%)	5,250 (14.50%)	5,647 (14.47%)	1,967 (5.04%)
Claimed 2 or More Races	(NA)	1,094 (3.02%)	583 (1.49%)	1,132 (2.90%)
Hispanic or Latino of Any Race	5,757 (22.34%)	14,259 (39.38%)	18,621 (47.71%)	20,258 (51.86%)
Not Hispanic or Latino	20,016 (77.66%)	21,951 (60.62%)	20,409 (52.29%)	18,806 (48.14%)
Minority	25,490 (98.90%)	20,167 (55.69%)	25,490 (65.31%)	25,965 (66.47%)



### Age Trends - Hendry

Description	1990	2000	2010 (ACS)	2017 (ACS)
Under Age 5	8.98%	7.93%	8.14%	7.31%
Ages 5-17	22.36%	22.14%	20.11%	20.14%
Ages 18-21	6.00%	8.10%	7.32%	5.73%
Ages 22-29	12.19%	13.08%	11.42%	11.25%
Ages 30-39	14.66%	14.68%	13.63%	12.94%
Ages 40-49	11.64%	12.22%	14.16%	12.33%
Ages 50-64	13.20%	12.09%	14.15%	17.19%
Age 65 and Over	10.96%	9.77%	11.08%	13.10%
-Ages 65-74	6.79%	5.83%	6.39%	7.62%
-Ages 75-84	3.34%	3.11%	3.59%	3.96%
-Age 85 and Over	0.84%	0.83%	1.09%	1.53%
Median Age	NA	30	32	34

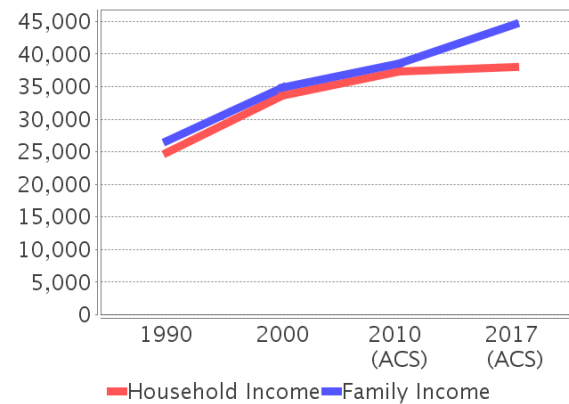
Percentage Population by Age Group - Hendry



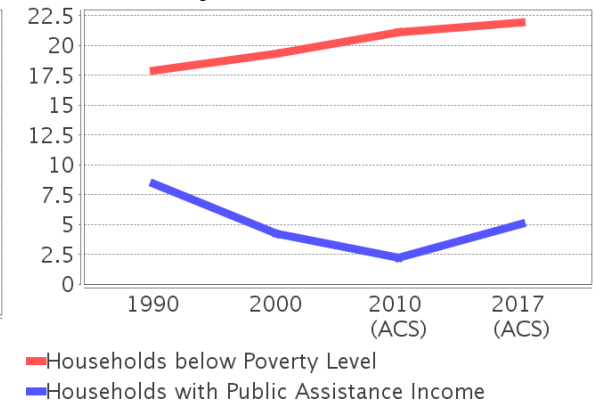
### Income Trends - Hendry

Description	1990	2000	2010 (ACS)	2017 (ACS)
Median Household Income	\$24,904	\$33,592	\$37,298	\$37,966
Median Family Income	\$26,635	\$34,902	\$38,564	\$44,603
Population below Poverty Level	18.93%	24.15%	26.39%	25.48%
Households below Poverty Level	17.90%	19.30%	21.12%	21.92%
Households with Public Assistance Income	8.44%	4.27%	2.21%	5.08%

Income Trends



Poverty and Public Assistance



### Disability Trends - Hendry

See the Data Sources section below for an explanation about the differences in disability data among the various years.

Description	1990	2000	2010 (ACS)	2017 (ACS)
Population 16 To 64 Years with a disability	1,586 (8.70%)	5,273 (16.53%)	NA (NA)	NA (NA)
Population 20 To 64 Years with a disability	NA (NA)	NA (NA)	NA (NA)	2,642 (12.28%)

## Educational Attainment Trends - Hendry

Age 25 and Over

Description	1990	2000	2010 (ACS)	2017 (ACS)
Less than 9th Grade	3,335 (22.19%)	5,109 (24.86%)	5,221 (22.30%)	4,842 (19.85%)
9th to 12th Grade, No Diploma	3,187 (21.21%)	4,311 (20.98%)	3,669 (15.67%)	3,661 (15.01%)
High School Graduate or Higher	8,505 (56.60%)	11,131 (54.16%)	14,518 (62.02%)	15,894 (65.15%)
Bachelor's Degree or Higher	1,503 (10.00%)	1,695 (8.25%)	1,925 (8.22%)	2,061 (8.45%)

## Language Trends - Hendry

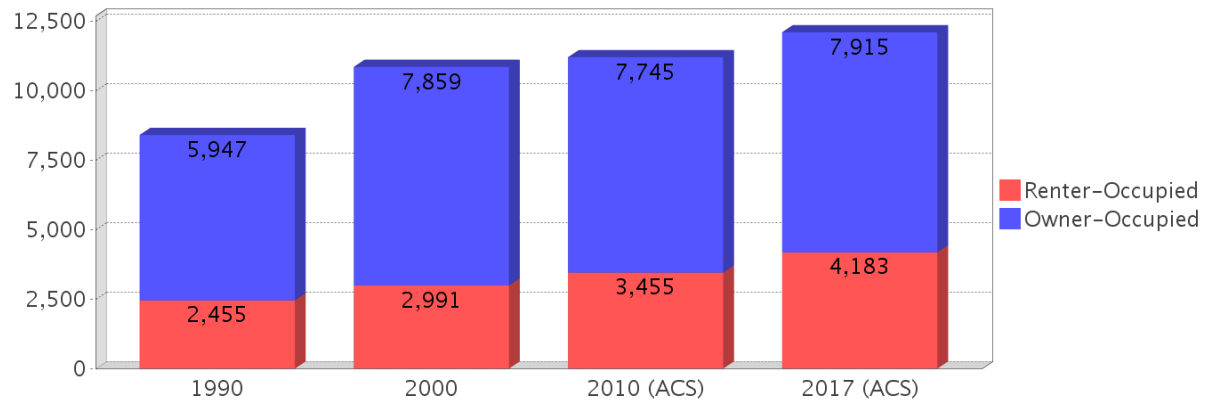
Age 5 and Over

Description	1990	2000	2010 (ACS)	2017 (ACS)
Speaks English Well	1,219 (5.17%)	2,159 (6.48%)	2,348 (6.55%)	2,672 (7.38%)
Speaks English Not Well	NA (NA)	2,434 (7.30%)	3,500 (9.76%)	2,965 (8.19%)
Speaks English Not at All	NA (NA)	2,795 (8.38%)	3,099 (8.64%)	2,467 (6.81%)
Speaks English Not Well or Not at All	1,854 (7.86%)	5,229 (15.68%)	6,599 (18.41%)	5,432 (15.00%)

## Housing Trends - Hendry

Description	1990	2000	2010 (ACS)	2017 (ACS)
Total	9,945	12,294	14,268	14,670
Units per Acre	0.013	0.016	0.019	0.019
Single-Family Units	4,455	5,851	7,292	7,469
Multi-Family Units	542	1,005	1,364	1,066
Mobile Home Units	3,370	5,316	5,568	6,058
Owner-Occupied Units	5,947	7,859	7,745	7,915
Renter-Occupied Units	2,455	2,991	3,455	4,183
Vacant Units	1,543	1,444	3,068	2,572
Median Housing Value	\$60,000	\$56,600	\$117,300	\$79,700
Occupied Housing Units w/No Vehicle	740 (8.81%)	845 (7.79%)	826 (7.38%)	1,147 (9.48%)

## Housing Tenure - Hendry



---

## County Data Sources

Demographic data reported is from the U.S. Decennial Census (1990, 2000) and the American Community Survey (ACS) 5-year estimates from 2006-2010 and 2013-2017. The data was gathered at the county level. Depending on the dataset, the data represents 100% counts (Census Summary File 1) or sample-based information (Census Summary File 3 or ACS).

### About the Census Data:

Use caution when comparing the 100% count data (Decennial Census) to the sample-based data (ACS). In any given year, about one in 40 or 2.5% of U.S. households will receive the ACS questionnaire. Over any five-year period, about one in eight households will receive the questionnaire, as compared to about one in six that received the long form questionnaire for the Decennial Census 2000. (Source: <http://mcdc.missouri.edu/pub/data/acs/Readme.shtml>) The U.S. Census Bureau provides help with this process:

<https://www.census.gov/programs-surveys/acs/guidance/comparing-acs-data/2017.html>

Use caution when interpreting changes in Race and Ethnicity over time. Starting with the 2000 Decennial Census, respondents were given a new option of selecting one or more race categories. Also in 2000, the placement of the question about Hispanic origin changed, helping to increase responsiveness to the Hispanic-origin question. Because of these and other changes, the 1990 data on race and ethnicity are not directly comparable with data from later censuses. (Source: <http://www.census.gov/prod/2001pubs/c2kbr01-1.pdf>;  
<http://www.census.gov/pred/www/rpts/Race%20and%20Ethnicity%20FINAL%20report.pdf>)

The "Minority" calculations are derived from Census and ACS data using both the race and ethnicity responses. On this report, "Minority" refers to individuals who list a race other than White and/or list their ethnicity as Hispanic/Latino. In other words, people who are multi-racial, any single race other than White, or Hispanic/Latino of any race are considered minorities.

Disability data is not included in the 2010 Decennial Census, or the 2006-2010 ACS. This data is available in the 2013-2017 ACS.

Because of changes made to the Census and ACS questions between 1990 and 2017, disability variables should not be compared from year to year. For example: 1) With the 1990 data the disabilities are listed as a "work disability" while this distinction is not made with 2000 or 2017 ACS data; 2) The 2017 ACS data includes the institutionalized population (e.g. persons in prisons and group homes), while this population is not included in 1990 or 2000; 3) the age groupings changed over the years.

Please take the following two concerns into account when viewing this data: 1) With the 1990 data the disabilities are listed as a "work disability" while this distinction is not made with 2000 or 2017 ACS data; 2) The 2017 ACS data includes the institutionalized population (e.g. persons in prisons and group homes), while this population is not included in 1990 or 2000.

source:

<https://www.census.gov/people/disability/methodology/acs.html>

<https://www.census.gov/population/www/cen2000/90vs00/index.html>

The category Bachelor's Degree or Higher under the heading Educational Attainment Trends is a subset of the category High School Graduate or Higher.

---

## Metadata

- Community and Fraternal Centers [https://etdmpub.florida-estat.org/metadata/gc\\_communitycenter.htm](https://etdmpub.florida-estat.org/metadata/gc_communitycenter.htm)
- Correctional Facilities in Florida [https://etdmpub.florida-estat.org/metadata/gc\\_correctional.htm](https://etdmpub.florida-estat.org/metadata/gc_correctional.htm)
- Cultural Centers in Florida [https://etdmpub.florida-estat.org/metadata/gc\\_culturecenter.htm](https://etdmpub.florida-estat.org/metadata/gc_culturecenter.htm)
- Fire Department and Rescue Station Facilities in Florida [https://etdmpub.florida-estat.org/metadata/gc\\_firestat.htm](https://etdmpub.florida-estat.org/metadata/gc_firestat.htm)
- Local, State, and Federal Government Buildings in Florida [https://etdmpub.florida-estat.org/metadata/gc\\_govbuild.htm](https://etdmpub.florida-estat.org/metadata/gc_govbuild.htm)
- Florida Health Care Facilities [https://etdmpub.florida-estat.org/metadata/gc\\_health.htm](https://etdmpub.florida-estat.org/metadata/gc_health.htm)
- Hospital Facilities in Florida [https://etdmpub.florida-estat.org/metadata/gc\\_hospitals.htm](https://etdmpub.florida-estat.org/metadata/gc_hospitals.htm)
- Law Enforcement Facilities in Florida [https://etdmpub.florida-estat.org/metadata/gc\\_lawenforce.htm](https://etdmpub.florida-estat.org/metadata/gc_lawenforce.htm)
- Florida Parks and Recreational Facilities [https://etdmpub.florida-estat.org/metadata/gc\\_parks.htm](https://etdmpub.florida-estat.org/metadata/gc_parks.htm)
- Religious Centers [https://etdmpub.florida-estat.org/metadata/gc\\_religion.htm](https://etdmpub.florida-estat.org/metadata/gc_religion.htm)
- Florida Public and Private Schools [https://etdmpub.florida-estat.org/metadata/gc\\_schools.htm](https://etdmpub.florida-estat.org/metadata/gc_schools.htm)
- Social Service Centers [https://etdmpub.florida-estat.org/metadata/gc\\_socialservice.htm](https://etdmpub.florida-estat.org/metadata/gc_socialservice.htm)
- Assisted Rental Housing Units in Florida [https://etdmpub.florida-estat.org/metadata/gc\\_assisted\\_housing.htm](https://etdmpub.florida-estat.org/metadata/gc_assisted_housing.htm)
- Group Care Facilities <https://etdmpub.florida-estat.org/metadata/groupcare.htm>
- Mobile Home Parks in Florida [https://etdmpub.florida-estat.org/metadata/gc\\_mobilehomes.htm](https://etdmpub.florida-estat.org/metadata/gc_mobilehomes.htm)
- Migrant Camps in Florida <https://etdmpub.florida-estat.org/metadata/migrant.htm>
- Veteran Organizations and Facilities [https://etdmpub.florida-estat.org/metadata/gc\\_veterans.htm](https://etdmpub.florida-estat.org/metadata/gc_veterans.htm)
- Generalized Land Use - Florida DOT District 1 [https://etdmpub.florida-estat.org/metadata/d1\\_lu\\_gen.htm](https://etdmpub.florida-estat.org/metadata/d1_lu_gen.htm)
- Census Block Groups in Florida [https://etdmpub.florida-estat.org/metadata/e2\\_cenacs\\_cci.htm](https://etdmpub.florida-estat.org/metadata/e2_cenacs_cci.htm)
- 1990 Census Block Groups in Florida [https://etdmpub.florida-estat.org/metadata/e2\\_cenblkgrp\\_1990\\_cci.htm](https://etdmpub.florida-estat.org/metadata/e2_cenblkgrp_1990_cci.htm)
- 2000 Census Block Groups in Florida [https://etdmpub.florida-estat.org/metadata/e2\\_cenblkgrp\\_2000\\_cci.htm](https://etdmpub.florida-estat.org/metadata/e2_cenblkgrp_2000_cci.htm)
- 2010 Census Block Groups in Florida [https://etdmpub.florida-estat.org/metadata/e2\\_cenblkgrp\\_2010\\_cci.htm](https://etdmpub.florida-estat.org/metadata/e2_cenblkgrp_2010_cci.htm)