

Sociocultural Data Report

Hernando

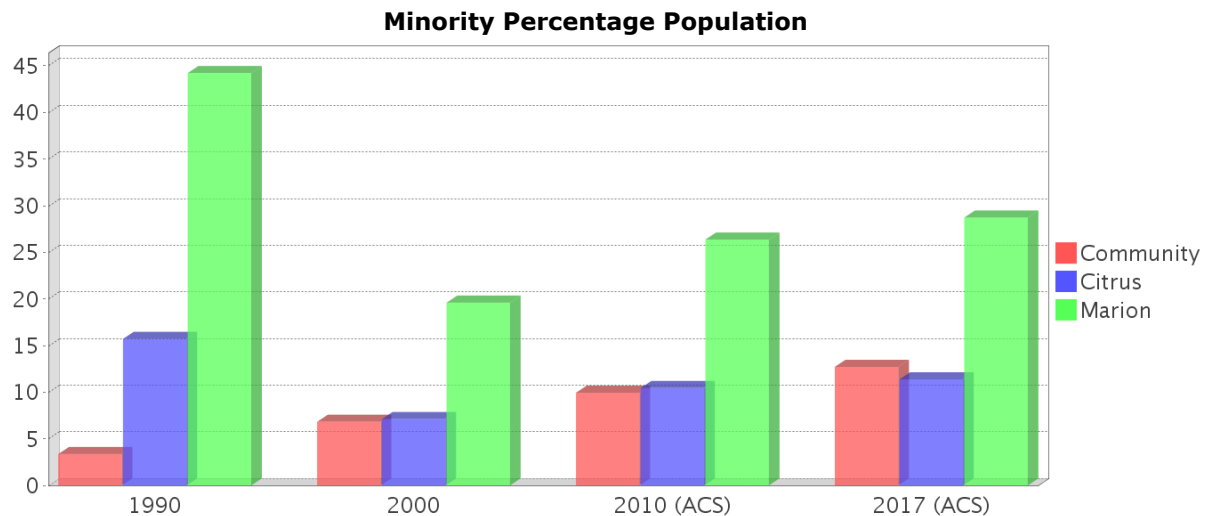
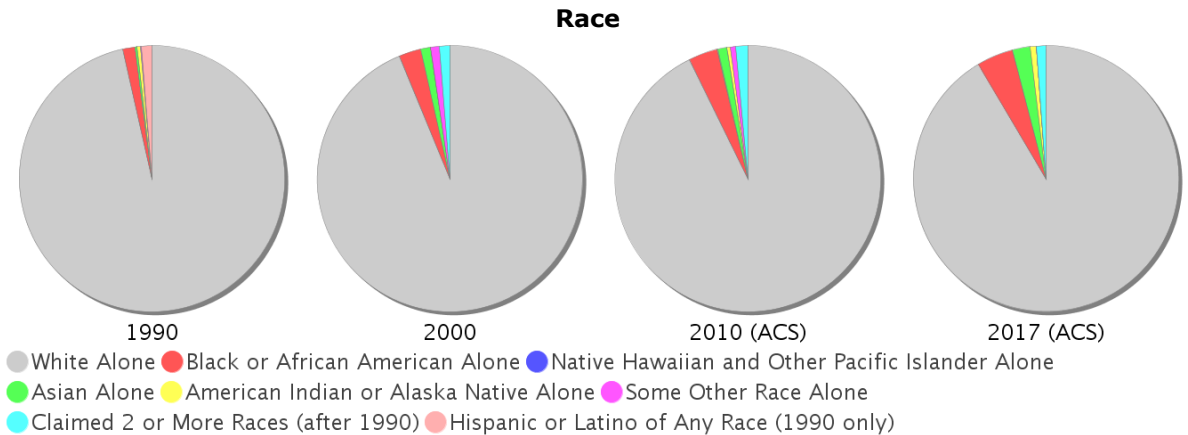
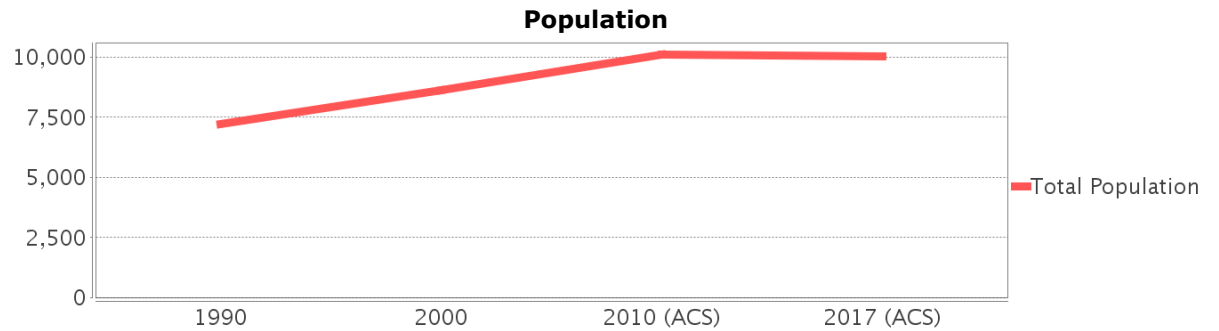
Area: 35,548 square miles
Jurisdiction(s): Cities: NA
 Counties: Citrus, Marion

General Population Trends

Description	1990	2000	2010 (ACS)	2017 (ACS)
Total Population	7,236	8,618	10,107	10,030
Total Households	3,249	3,882	4,613	4,502
Average Persons per Acre	0.68	0.70	0.84	0.87
Average Persons per Household	2.26	2.18	2.06	2.24
Average Persons per Family	2.67	2.62	2.81	2.88
Males	3,518	4,245	4,978	5,280
Females	3,718	4,373	5,129	4,749

Race and Ethnicity Trends

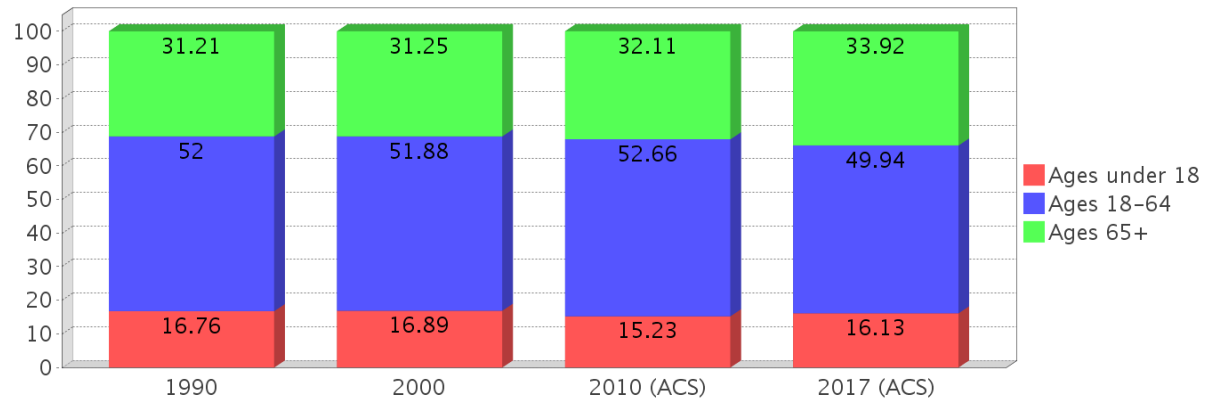
Description	1990	2000	2010 (ACS)	2017 (ACS)
White Alone	7,071 (97.72%)	8,082 (93.78%)	9,375 (92.76%)	9,171 (91.44%)
Black or African American Alone	107 (1.48%)	230 (2.67%)	358 (3.54%)	451 (4.50%)
Native Hawaiian and Other Pacific Islander Alone	1 (0.01%)	0 (0.00%)	2 (0.02%)	0 (0.00%)
Asian Alone	21 (0.29%)	102 (1.18%)	119 (1.18%)	215 (2.14%)
American Indian or Alaska Native Alone	29 (0.40%)	4 (0.05%)	40 (0.40%)	73 (0.73%)
Some Other Race Alone	7 (0.10%)	89 (1.03%)	64 (0.63%)	3 (0.03%)
Claimed 2 or More Races	NA (NA)	111 (1.29%)	150 (1.48%)	116 (1.16%)
Hispanic or Latino of Any Race	93 (1.29%)	148 (1.72%)	388 (3.84%)	447 (4.46%)
Not Hispanic or Latino	7,143 (98.71%)	8,470 (98.28%)	9,719 (96.16%)	9,583 (95.54%)
Minority	243 (3.36%)	588 (6.82%)	1,005 (9.94%)	1,275 (12.71%)



Age Trends

Description	1990	2000	2010 (ACS)	2017 (ACS)
Under Age 5	4.70%	4.61%	4.05%	3.39%
Ages 5-17	12.06%	12.29%	11.18%	12.74%
Ages 18-21	2.96%	3.50%	3.46%	3.08%
Ages 22-29	7.50%	5.13%	5.69%	5.28%
Ages 30-39	10.57%	9.84%	7.56%	9.09%
Ages 40-49	9.56%	11.73%	11.53%	8.20%
Ages 50-64	21.41%	21.68%	24.42%	24.29%
Age 65 and Over	31.21%	31.25%	32.11%	33.92%
-Ages 65-74	21.13%	17.64%	19.06%	20.48%
-Ages 75-84	8.61%	10.78%	10.17%	10.93%
-Age 85 and Over	1.46%	2.83%	2.88%	2.51%
Median Age	NA	54	54	54

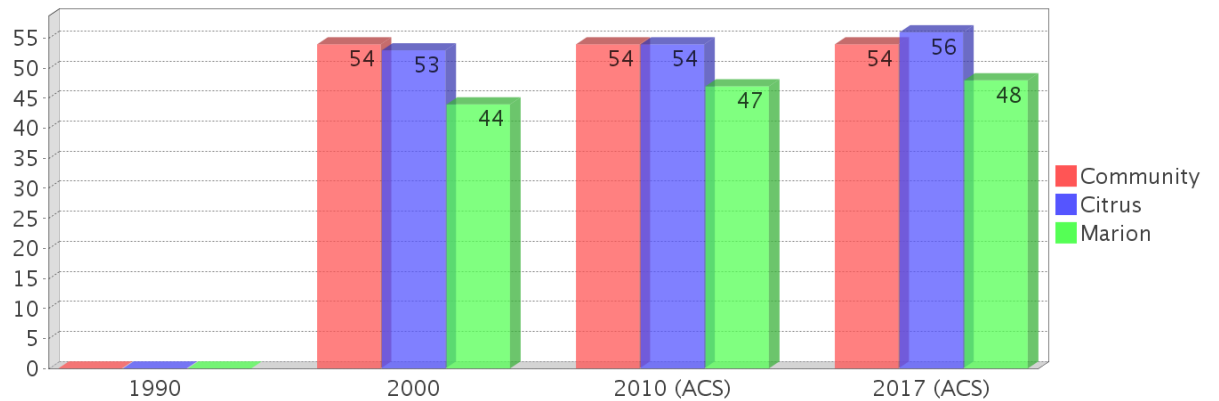
Percentage Population by Age Group



Income Trends

Description	1990	2000	2010 (ACS)	2017 (ACS)
Median Household Income	\$20,885	\$30,308	\$36,148	\$35,151
Median Family Income	\$24,284	\$35,500	\$44,016	\$53,339
Population below Poverty Level	11.80%	13.38%	17.86%	18.62%
Households below Poverty Level	12.10%	11.44%	14.91%	17.55%
Households with Public Assistance Income	5.17%	2.83%	0.95%	3.22%

Median Age Comparison

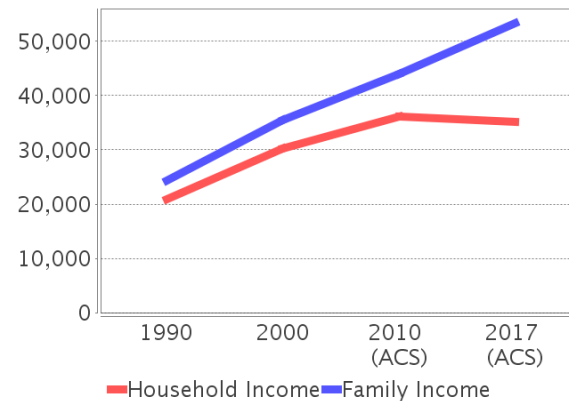


Disability Trends

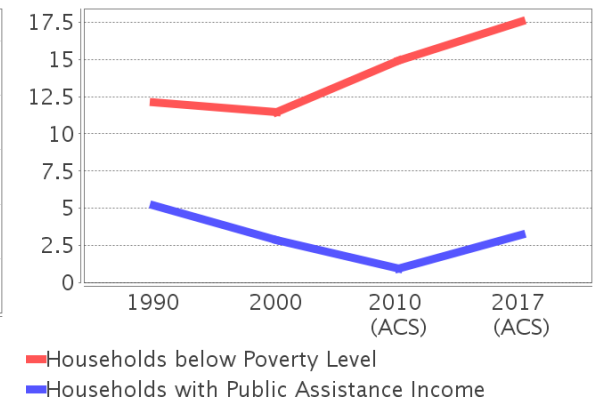
See the Data Sources section below for an explanation about the differences in disability data among the various years.

Description	1990	2000	2010 (ACS)	2017 (ACS)
Population 16 To 64 Years with a disability	699 (11.24%)	1396 (17.12%)	(NA)	(NA)
Population 20 To 64 Years with a disability	(NA)	(NA)	(NA)	844 (17.41%)

Income Trends



Poverty and Public Assistance



Educational Attainment Trends

Age 25 and Over

Description	1990	2000	2010 (ACS)	2017 (ACS)
Less than 9th Grade	674 (11.63%)	335 (4.96%)	393 (4.89%)	186 (2.36%)
9th to 12th Grade, No Diploma	1,321 (22.79%)	1,290 (19.09%)	831 (10.34%)	700 (8.88%)
High School Graduate or Higher	3,802 (65.60%)	5,133 (75.94%)	6,812 (84.78%)	6,997 (88.76%)
Bachelor's Degree or Higher	402 (6.94%)	814 (12.04%)	1,103 (13.73%)	1,127 (14.30%)

Language Trends

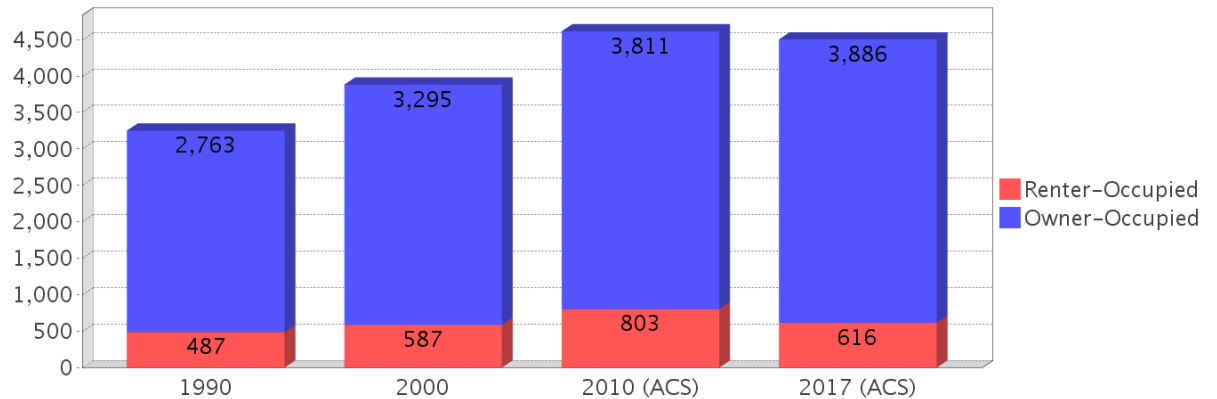
Age 5 and Over

Description	1990	2000	2010 (ACS)	2017 (ACS)
Speaks English Well	49 (0.70%)	100 (1.22%)	68 (0.68%)	82 (0.85%)
Speaks English Not Well	NA (NA)	41 (0.50%)	43 (0.43%)	8 (0.08%)
Speaks English Not at All	NA (NA)	5 (0.06%)	5 (0.05%)	6 (0.06%)
Speaks English Not Well or Not at All	36 (0.52%)	46 (0.56%)	48 (0.48%)	14 (0.14%)

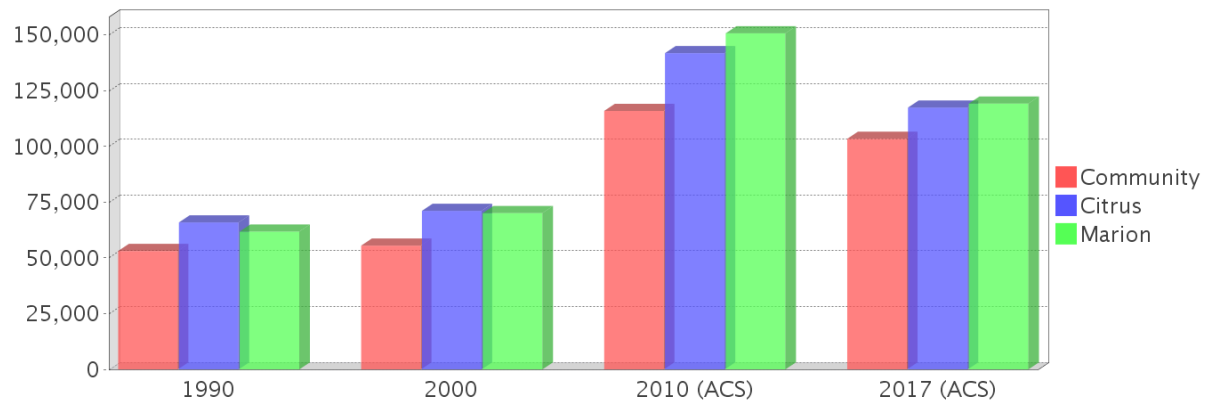
Housing Trends

Description	1990	2000	2010 (ACS)	2017 (ACS)
Total	4,257	4,923	5,920	5,817
Units per Acre	0.23	0.25	0.30	0.30
Single-Family Units	1,605	2,518	3,247	3,331
Multi-Family Units	41	173	57	90
Mobile Home Units	1,595	2,216	2,763	2,389
Owner-Occupied Units	2,763	3,295	3,811	3,886
Renter-Occupied Units	487	587	803	616
Vacant Units	1,008	1,041	1,307	1,315
Median Housing Value	\$53,100	\$55,500	\$115,900	\$103,400
Occupied Housing Units w/No Vehicle	136 (4.19%)	232 (5.98%)	166 (3.60%)	203 (4.51%)

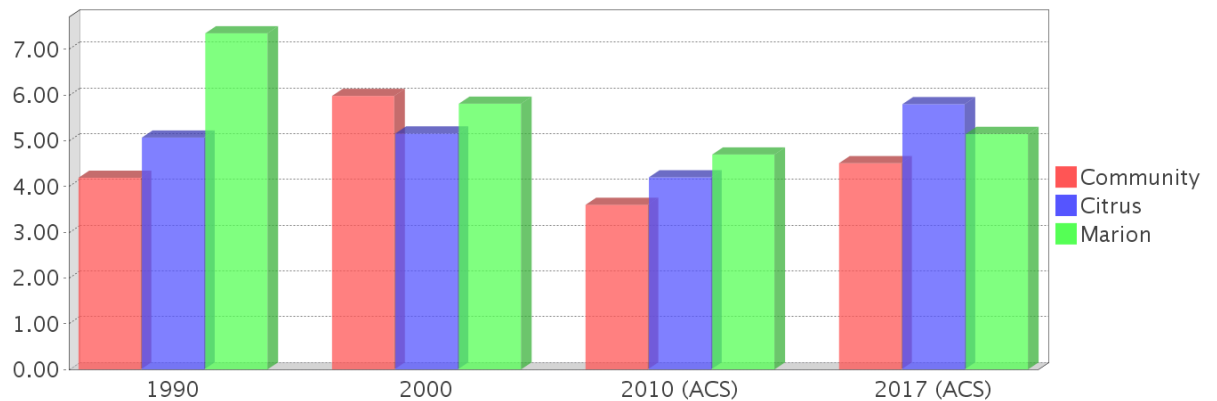
Housing Tenure



Median Housing Value Comparison



Occupied Units With No Vehicles Available



Community Facilities

The community facilities information below is useful in a variety of ways for environmental evaluations. These community resources should be evaluated for potential sociocultural effects, such as accessibility and relocation potential. The facility types may indicate the types of population groups present in the project study area. Facility staff and leaders can be sources of community information such as who uses the facility and how it is used. Additionally, community facilities are potential public meeting venues.

Assisted Housing (Points)

Facility Name	Address	Zip Code
VENTURA VILLAGE	3580 E WOOD KNOLL LANE	34442

Community Centers (Points)

Facility Name	Address	Zip Code
VFW POST 4252 - LEROY ROOKS JR.	3190 N CARL G ROSE HWY	34442
ELKS LODGE 2522	3580 E LEMON DR	34442
ITALIAN SOCIAL CLUB OF CITRUS COUNTY	1305 E NORVELL BRYANT HWY	34442
COMMUNITY LEARNING CENTER OF CITRUS COUNTY	2435 N FLORIDA AVE	34442
ASSOCIATION FOR RETARDED CITIZENS (ARC) - CITRUS COUNTY	3422 E HILLTOP LOOP	34442
HERNANDO CIVIC CLUB	3848 E PARSONS POINT RD	34442

Fire Stations (Points)

Facility Name	Address	Zip Code
CITRUS COUNTY FIRE DEPARTMENT AND RESCUE STATION 5 (HERNANDO)	3673 E ORANGE DR	34442
CITRUS COUNTY VOLUNTEER FIRE DEPARTMENT STATION 15	6990 N CARL G ROSE HWY	34442

Florida Parks and Recreational Facilities (Points)

Facility Name	Address	Zip Code
HERNANDO PARK	3472 E POET LN	34442
HERNANDO PUBLIC BOAT RAMP	3650 EAST LAKE PLACE	34442
WITHLACOOCHEE STATE FOREST - TWO MILE PRAIRIE TRACT & BEAR HEAD HAMMOCK PRIMITIVE CAMPSITES	7150 N LECANTO HWY	34442
HERNANDO TRAILHEAD	3593 E OAR CT	34442
HERNANDO PARK & BEACH	3650 E LAKE PL	34442
WITHLACOOCHEE STATE FOREST - BEAR HEAD HAMMOCK TRAILHEAD & TWO MILE PRAIRIE TRAILHEAD	7150 N LECANTO HWY	34442

Government Building

Facility Name	Address	Zip Code
U S POST OFFICE - HERNANDO	3795 E PARSONS POINT RD	34442

Healthcare Facilities (Geocoded)

Facility Name	Address	Zip Code
HERNANDO MEDICAL CENTER	2669 N FLORIDA AVENUE	34442
GULF COAST SPINE INSTITUTE	2300 E NORVELL BRYANT HWY	34442

Mobile Home Parks in Florida

Facility Name	Address	Zip Code
WATSON'S RESORT AND FISH CAMP OF CITRUS COUNTY	4195 E PARSON'S POINT RD	34442

Public and Private Schools (Points)

Facility Name	Address	Zip Code
SOLID ROCK CHRISTIAN ACADEMY	972 N CHRISTY WAY	34453

Facility Name	Address	Zip Code
LAKEVIEW SCHOOL/ CDS CITRUS EARLY HEAD START	2415 N FLORIDA AVE	34442
HERNANDO ELEMENTARY SCHOOL	2353 N CROFT AVENUE	34442

Religious Centers (Points)

Facility Name	Address	Zip Code
FIRST SPANISH CHURCH OF CITRUS COUNTY	1370 N CROFT AVE	34453
NEW TESTAMENT BAPTIST CHURCH	1845 N CROFT AVE	34450
JEHOVAH'S WITNESSES	1931 E NORVELL BRYANT HIGHWAY	34442
CHURCH OF THE NAZARENE	2101 N FLORIDA AVENUE	34442
CALVARY CHRISTIAN CENTER	2728 E HARLEY STREET	34453
NEW BEGINING FELLOWSHIP	2577 N FLORIDA AVENUE	34442
HOUSE OF POWER BIBLE STUDY MINISTRIES	7233 N LECANTO HWY	34442
CHRIST WAY FELLOWSHIP	972 N CHRISTY WAY	34453
BETHEL BAPTIST CHURCH	2289 N MCGEE DRIVE	34442
GRACE BIBLE FELLOWSHIP	2780 NORTH FLORIDA AVENUE SUITE 17	34442
HERNANDO CHURCH OF LIVING GOD	3441 E OLEANDER LANE	34442
FIRST BAPTIST CHURCH-HERNANDO	3790 E PARSONS POINT ROAD	34442
HERNANDO UNITED METHODIST CHURCH	2125 E NORVELL BRYANT HIGHWAY	34442
HERNANDO CHURCH OF CHRIST	7187 N LECANTO HWY	34442
SEVENTH DAY ADVENTIST CHURCH HERNANDO	1880 NORTH TRUCKS AVENUE	34442
MOUNT ZION AFRICAN METHODIST EPISCOPAL CHURCH	2532 NORTH CALOMONDEN TERRACE	34442
MT CARMEL MISSIONARY BAPTIST	3451 E LEMON DRIVE	34442
SPANISH CHURCH HOUSE OF PRAYER	3220 N CARL G ROSE HIGHWAY	34442
NATURE COAST UNITARIAN UNIVERSALIST	7633 N FLORIDA AVE	34433
RIVERSIDE BAPTIST CHURCH OF CITRUS COUNTY	7771 N CARL G ROSE HIGHWAY	34442
TRINITY BAPTIST CHURCH	2840 E HAYES STREET	34453
ST RAPHAEL ORTHODOX CHURCH	1277 N PAUL DRIVE	34453

US Census Places

Facility Name
Citrus Springs
Inverness Highlands North
Hernando
Pine Ridge
Citrus Hills

Veteran Organizations and Facilities (Points)

Facility Name	Address	Zip Code
VFW POST 4252 - LEROY ROOKS JR.	3190 N CARL G ROSE HIGHWAY	34442

Block Groups

The following Census Block Groups were used to calculate demographics for this report.

1990 Census Block Groups

120179807003, 120179807004, 120179801005, 120179801006, 120179801004, 120179807002, 120179801003, 120179807001, 120179808001, 120179801002, 120179808003, 120179808004

2000 Census Block Groups

120179803021, 120179807001, 120179808004, 120179801007, 120179807003, 120179807004, 120179808002, 120179801003, 120179808001, 120179801006, 120179801002, 120179808003, 120179801005, 120179801004

2010 Census Block Groups

120174501011, 120174501012, 120174501024, 120174508004, 120174507023, 120174508003, 120174508001, 120174508002, 120174507024, 120174507012, 120174503021, 120174501013, 120174501021, 120174507021, 120174501022, 120174501023

2017 Census Block Groups

120174501011, 120174507023, 120174507021, 120174503021, 120174501012, 120174507024, 120174508004, 120174501024, 120174501021, 120174508002, 120174507012, 120174501013, 120174501022, 120174501023, 120174508003, 120174508001

Data Sources

Area

The geographic area of the community based on a user-specified community boundary or area of interest (AOI) boundary.

Jurisdiction

Jurisdiction(s) includes local government boundaries that intersect the community or AOI boundary.

Demographic Data

Demographic data reported under the headings General Population Trends, Race and Ethnicity Trends, Age Trends, Income Trends, Educational Attainment Trends, Language Trends, and Housing Trends is from the U.S. Decennial Census (1990, 2000) and the American Community Survey (ACS) 5-year estimates from 2006-2010 and 2013-2017. The data was gathered at the block group level for user-specified community boundaries and AOIs, and at the county level for counties. Depending on the dataset, the data represents 100% counts (Census Summary File 1) or sample-based information (Census Summary File 3 or ACS).

About the Census Data:

User-specified community boundaries and AOIs do not always correspond precisely to block group boundaries. In these instances, adjustment of the geographic area and data for affected block groups is required to estimate the actual population. To improve the accuracy of such estimates in the SDR report, the census block group data was adjusted to exclude all census blocks with a population of two or fewer. These areas were eliminated from the corresponding years' block groups. Next, the portion of the block group that lies outside of the community or AOI boundary was removed. The demographics within each block group were then recalculated, assuming an equal area distribution of the population. Note that there may be areas where there is no population.

Use caution when comparing the 100% count data (Decennial Census) to the sample-based data (ACS). In any given year, about one in 40 or 2.5% of U.S. households will receive the ACS questionnaire. Over any five-year period, about one in eight households will receive the questionnaire, as compared to about one in six that received the long form questionnaire for the Decennial Census 2000. (Source: <http://mcdc.missouri.edu/pub/data/acs/Readme.shtml>) The U.S. Census Bureau provides help with this process:

<https://www.census.gov/programs-surveys/acs/guidance/comparing-acs-data/2017.html>

Use caution when interpreting changes in Race and Ethnicity over time. Starting with the 2000 Decennial Census, respondents were given a new option of selecting one or more race categories. Also in 2000, the placement of the question about Hispanic origin changed, helping to increase responsiveness to the Hispanic-origin question. Because of these and other changes, the 1990 data on race and ethnicity are not directly comparable with data from later censuses.

(Source: <http://www.census.gov/prod/2001pubs/c2kbr01-1.pdf>;

<http://www.census.gov/pred/www/rpts/Race%20and%20Ethnicity%20FINAL%20report.pdf>)

The "Minority" calculations are derived from Census and ACS data using both the race and ethnicity responses. On this report, "Minority" refers to individuals who list a race other than White and/or list their ethnicity as Hispanic/Latino. In other words, people who are multi-racial, any single race other than White, or Hispanic/Latino of any race are considered minorities.

Disability data is not included in the 2010 Decennial Census, or the 2006-2010 ACS. This data is available in the 2013-2017 ACS.

Because of changes made to the Census and ACS questions between 1990 and 2017, disability variables should not be compared from year to year. For example: 1) With the 1990 data the disabilities are listed as a "work disability" while this distinction is not made with 2000 or 2017 ACS data; 2) The 2017 ACS data includes the institutionalized population (e.g. persons in prisons and group homes), while this population is not included in 1990 or 2000; 3) the age groupings changed over the years.

Please take the following two concerns into account when viewing this data: 1) With the 1990 data the disabilities are listed as a "work disability" while this distinction is not made with 2000 or 2017 ACS data; 2) The 2017 ACS data includes the institutionalized population (e.g. persons in prisons and group homes), while this population is not included in 1990 or 2000.

The category Bachelor's Degree or Higher under the heading Educational Attainment Trends is a subset of the category High School Graduate or Higher.

Income of households. This includes the income of the householder and all other individuals 15 years old and over in the household, whether they are related to the householder or not. Because many households consist of only one person, average household income is usually less than average family income.

Income of families. In compiling statistics on family income, the incomes of all members 15 years old and over related to the householder are summed and treated as a single amount.

Age Trends median age for 1990 is not available.

Land Use Data

The Land Use information Indicates acreages and percentages for the generalized land use types used to group parcel-specific, existing land use assigned by the county property appraiser office according to the Florida Department of Revenue land use codes.

Community Facilities Data

- Assisted Rental Housing Units - Identifies multifamily rental developments that receive funding assistance under federal, state, and local government programs to offer affordable housing as reported by the Shimberg Center for

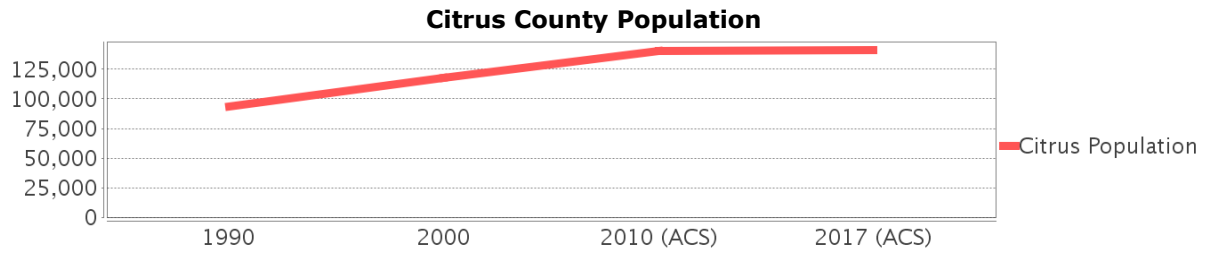
Housing Studies, University of Florida.

- Mobile Home Parks - Identifies approved or acknowledged mobile home parks reported by the Florida Department of Business and Professional Regulation and Florida Department of Health.
- Migrant Camps - Identifies migrant labor camp facilities inspected by the Florida Department of Health.
- Group Care Facilities - Identifies group care facilities inspected by the Florida Department of Health.
- Community Center and Fraternal Association Facilities - Identifies facilities reported by multiple sources.
- Law Enforcement Correctional Facilities - Identifies facilities reported by multiple sources.
- Cultural Centers - Identifies cultural centers including organizations, buildings, or complexes that promote culture and arts (e.g., aquariums and zoological facilities; arboreta and botanical gardens; dinner theaters; drive-ins; historical places and services; libraries; motion picture theaters; museums and art galleries; performing arts centers; performing arts theaters; planetariums; studios and art galleries; and theater producers stage facilities) reported by multiple sources.
- Fire Department and Rescue Station Facilities - Identifies facilities reported by multiple sources.
- Government Buildings - Identifies local, state, and federal government buildings reported by multiple sources.
- Health Care Facilities - Identifies health care facilities including abortion clinics, dialysis clinics, medical doctors, nursing homes, osteopaths, state laboratories/clinics, and surgicenters/walk-in clinics reported by the Florida Department of Health.
- Hospital Facilities - Identifies hospital facilities reported by multiple sources.
- Law Enforcement Facilities - Identifies law enforcement facilities reported by multiple sources.
- Parks and Recreational Facilities - Identifies parks and recreational facilities reported by multiple sources.
- Religious Center Facilities - Identifies religious centers including churches, temples, synagogues, mosques, chapels, centers, and other types of religious facilities reported by multiple sources.
- Private and Public Schools - Identifies private and public schools reported by multiple sources.
- Social Service Centers - Identifies social service centers reported by multiple sources.
- Veteran Organizations and Facilities

Citrus County Demographic Profile

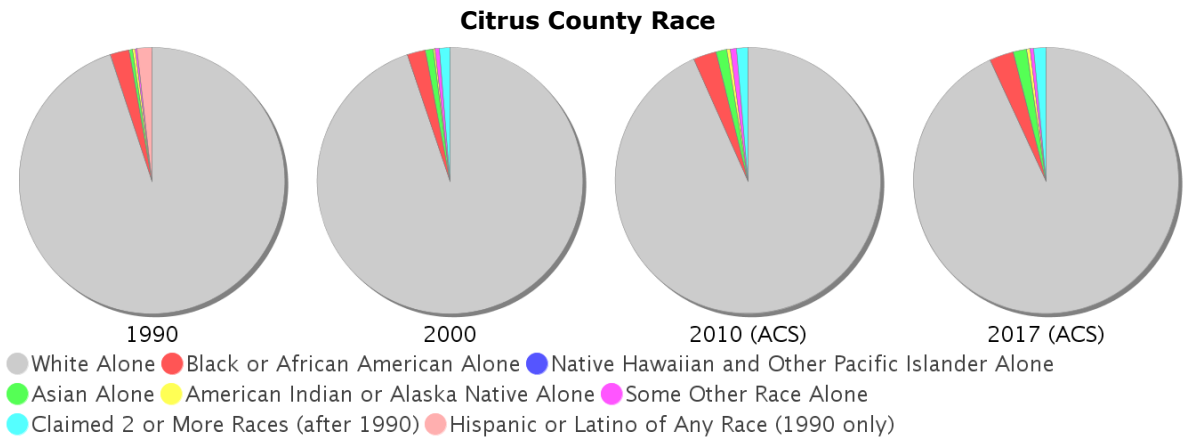
General Population Trends - Citrus

Description	1990	2000	2010 (ACS)	2017 (ACS)
Total Population	93,515	118,085	140,686	141,373
Total Households	40,573	52,634	59,974	62,488
Average Persons per Acre	0.231	0.294	0.351	0.353
Average Persons per Household	2.305	2.201	2.00	2.22
Average Persons per Family	2.676	2.656	2.861	2.829
Males	44,711	56,661	68,183	68,487
Females	48,804	61,424	72,503	72,886



Race and Ethnicity Trends - Citrus

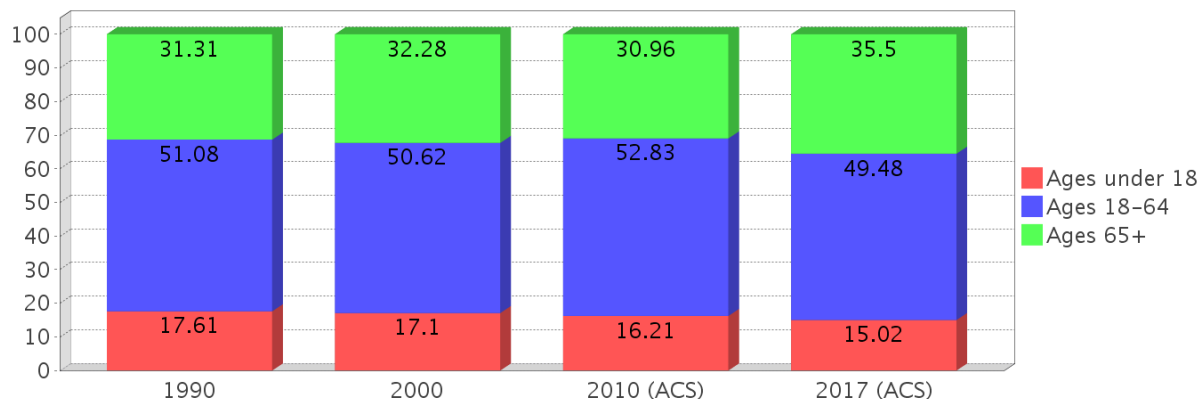
Description	1990	2000	2010 (ACS)	2017 (ACS)
White Alone	90,411 (96.68%)	111,930 (94.79%)	131,271 (93.31%)	131,599 (93.09%)
Black or African American Alone	2,206 (2.36%)	2,674 (2.26%)	3,942 (2.80%)	4,165 (2.95%)
Native Hawaiian and Other Pacific Islander Alone	(NA)	0 (0.00%)	33 (0.02%)	7 (0.00%)
Asian Alone	392 (0.42%)	1,145 (0.97%)	1,851 (1.32%)	2,354 (1.67%)
American Indian or Alaska Native Alone	283 (0.30%)	230 (0.19%)	606 (0.43%)	499 (0.35%)
Some Other Race Alone	220 (0.24%)	616 (0.52%)	1,026 (0.73%)	631 (0.45%)
Claimed 2 or More Races	(NA)	1,490 (1.26%)	1,957 (1.39%)	2,118 (1.50%)
Hispanic or Latino of Any Race	1,702 (1.82%)	3,058 (2.59%)	6,171 (4.39%)	7,528 (5.32%)
Not Hispanic or Latino	91,813 (98.18%)	115,027 (97.41%)	134,515 (95.61%)	133,845 (94.68%)
Minority	14,687 (15.71%)	8,394 (7.11%)	14,687 (10.44%)	16,085 (11.38%)



Age Trends - Citrus

Description	1990	2000	2010 (ACS)	2017 (ACS)
Under Age 5	4.75%	3.76%	3.91%	3.85%
Ages 5-17	12.86%	13.34%	12.31%	11.17%
Ages 18-21	3.19%	3.01%	3.62%	3.42%
Ages 22-29	7.27%	4.92%	5.51%	6.25%
Ages 30-39	11.04%	9.99%	7.96%	7.80%
Ages 40-49	10.13%	11.81%	11.75%	9.34%
Ages 50-64	19.45%	20.90%	23.99%	22.68%
Age 65 and Over	31.31%	32.28%	30.96%	35.50%
-Ages 65-74	19.81%	17.34%	16.75%	19.46%
-Ages 75-84	9.53%	11.77%	10.51%	11.81%
-Age 85 and Over	1.98%	3.17%	3.70%	4.22%
Median Age	NA	53	54	56

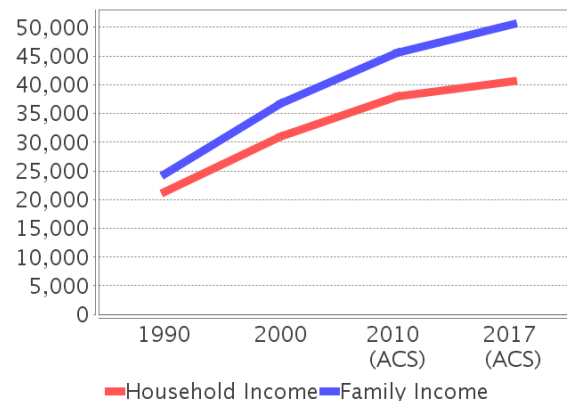
Percentage Population by Age Group - Citrus



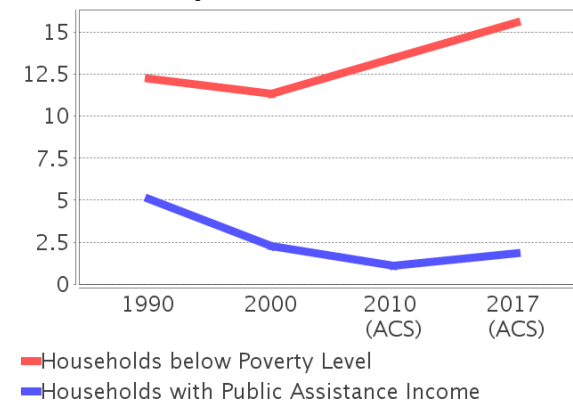
Income Trends - Citrus

Description	1990	2000	2010 (ACS)	2017 (ACS)
Median Household Income	\$21,285	\$31,001	\$37,933	\$40,574
Median Family Income	\$24,465	\$36,711	\$45,568	\$50,551
Population below Poverty Level	12.56%	11.68%	14.42%	17.39%
Households below Poverty Level	12.22%	11.32%	13.43%	15.56%
Households with Public Assistance Income	5.10%	2.28%	1.12%	1.82%

Income Trends



Poverty and Public Assistance



Disability Trends - Citrus

See the Data Sources section below for an explanation about the differences in disability data among the various years.

Description	1990	2000	2010 (ACS)	2017 (ACS)
Population 16 To 64 Years with a disability	6,769 (8.70%)	16,712 (14.92%)	NA (NA)	NA (NA)
Population 20 To 64 Years with a disability	NA (NA)	NA (NA)	NA (NA)	11,326 (17.00%)

Educational Attainment Trends - Citrus

Age 25 and Over

Description	1990	2000	2010 (ACS)	2017 (ACS)
Less than 9th Grade	7,219 (10.02%)	5,003 (5.40%)	4,751 (4.32%)	3,650 (3.26%)
9th to 12th Grade, No Diploma	15,427 (21.41%)	15,075 (16.28%)	11,708 (10.64%)	10,496 (9.37%)
High School Graduate or Higher	49,408 (68.57%)	72,516 (78.32%)	93,582 (85.04%)	97,887 (87.37%)
Bachelor's Degree or Higher	7,480 (10.38%)	12,177 (13.15%)	18,177 (16.52%)	19,994 (17.85%)

Language Trends - Citrus

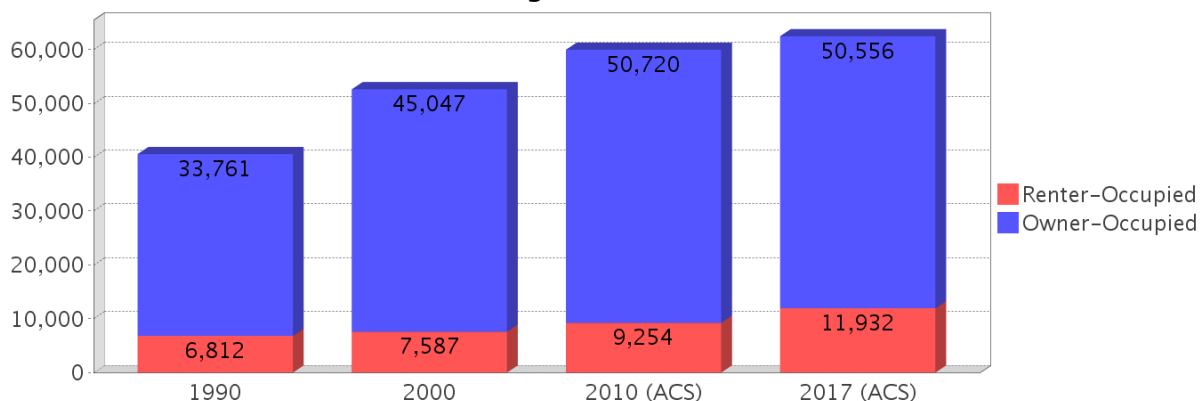
Age 5 and Over

Description	1990	2000	2010 (ACS)	2017 (ACS)
Speaks English Well	1,166 (1.31%)	1,712 (1.51%)	1,475 (1.09%)	1,618 (1.19%)
Speaks English Not Well	NA (NA)	794 (0.70%)	718 (0.53%)	772 (0.57%)
Speaks English Not at All	NA (NA)	184 (0.16%)	235 (0.17%)	457 (0.34%)
Speaks English Not Well or Not at All	577 (0.65%)	978 (0.86%)	953 (0.70%)	1,229 (0.90%)

Housing Trends - Citrus

Description	1990	2000	2010 (ACS)	2017 (ACS)
Total	49,854	62,204	76,813	78,825
Units per Acre	0.123	0.155	0.192	0.197
Single-Family Units	26,581	41,314	51,857	55,727
Multi-Family Units	2,103	3,542	4,111	4,844
Mobile Home Units	11,752	17,212	20,704	18,152
Owner-Occupied Units	33,761	45,047	50,720	50,556
Renter-Occupied Units	6,812	7,587	9,254	11,932
Vacant Units	9,281	9,570	16,839	16,337
Median Housing Value	\$65,900	\$71,100	\$141,800	\$117,400
Occupied Housing Units w/No Vehicle	2,058 (5.07%)	2,717 (5.16%)	2,520 (4.20%)	3,623 (5.80%)

Housing Tenure - Citrus



Marion County Demographic Profile

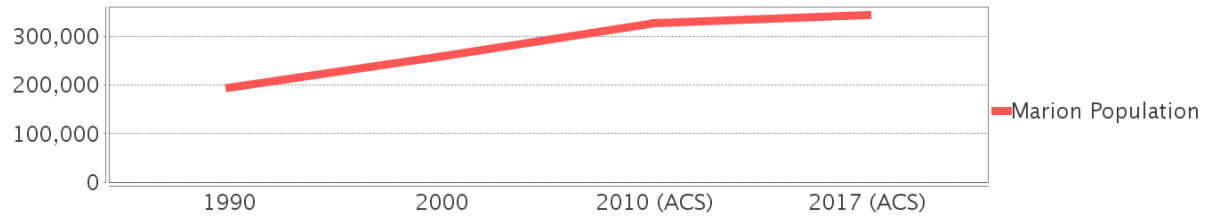
General Population Trends - Marion

Description	1990	2000	2010 (ACS)	2017 (ACS)
Total Population	194,833	258,916	326,833	343,778
Total Households	78,177	106,755	133,966	134,747
Average Persons per Acre	0.183	0.243	0.307	0.323
Average Persons per Household	2.492	2.362	2.00	2.48
Average Persons per Family	2.905	2.858	2.94	3.155
Males	93,813	124,493	157,123	164,984
Females	101,020	134,423	169,710	178,794

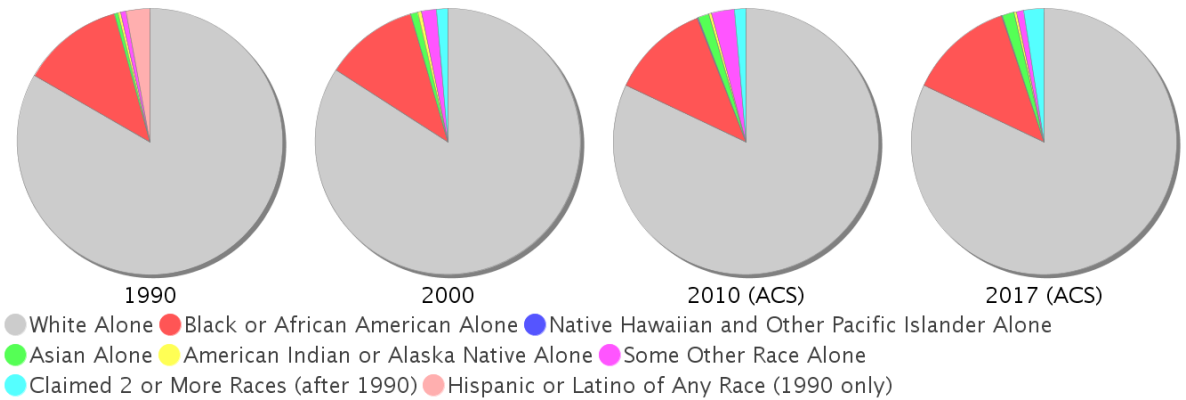
Race and Ethnicity Trends - Marion

Description	1990	2000	2010 (ACS)	2017 (ACS)
White Alone	167,094 (85.76%)	217,676 (84.07%)	267,887 (81.96%)	281,763 (81.96%)
Black or African American Alone	24,844 (12.75%)	29,401 (11.36%)	39,469 (12.08%)	44,237 (12.87%)
Native Hawaiian and Other Pacific Islander Alone	(NA)	52 (0.02%)	303 (0.09%)	222 (0.06%)
Asian Alone	919 (0.47%)	2,221 (0.86%)	4,439 (1.36%)	5,129 (1.49%)
American Indian or Alaska Native Alone	638 (0.33%)	1,314 (0.51%)	1,113 (0.34%)	1,080 (0.31%)
Some Other Race Alone	1,312 (0.67%)	4,572 (1.77%)	8,946 (2.74%)	2,755 (0.80%)
Claimed 2 or More Races	(NA)	3,680 (1.42%)	4,676 (1.43%)	8,592 (2.50%)
Hispanic or Latino of Any Race	5,860 (3.01%)	15,535 (6.00%)	33,360 (10.21%)	42,467 (12.35%)
Not Hispanic or Latino	188,973 (96.99%)	243,381 (94.00%)	293,473 (89.79%)	301,311 (87.65%)
Minority	86,162 (44.22%)	50,741 (19.60%)	86,162 (26.36%)	98,733 (28.72%)

Marion County Population



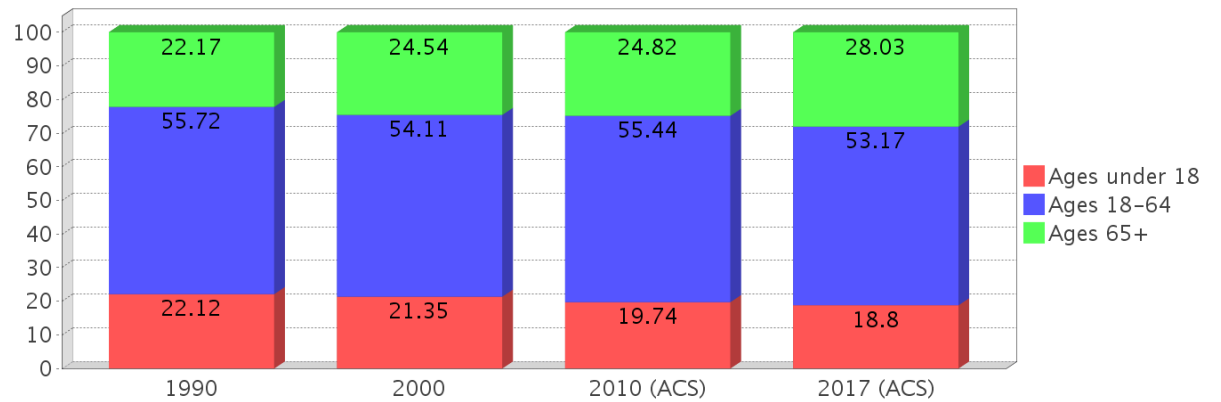
Marion County Race



Age Trends - Marion

Description	1990	2000	2010 (ACS)	2017 (ACS)
Under Age 5	6.32%	5.05%	5.29%	5.01%
Ages 5-17	15.80%	16.30%	14.45%	13.78%
Ages 18-21	4.46%	3.82%	4.27%	3.91%
Ages 22-29	9.92%	7.16%	7.79%	8.51%
Ages 30-39	13.55%	12.45%	9.90%	9.79%
Ages 40-49	11.26%	13.05%	12.75%	10.86%
Ages 50-64	16.52%	17.64%	20.72%	20.10%
Age 65 and Over	22.17%	24.54%	24.82%	28.03%
-Ages 65-74	14.45%	13.62%	13.65%	15.50%
-Ages 75-84	6.39%	8.91%	8.57%	9.39%
-Age 85 and Over	1.33%	2.01%	2.61%	3.14%
Median Age	NA	44	47	48

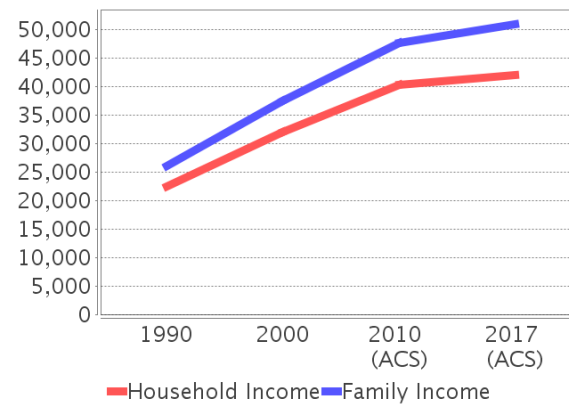
Percentage Population by Age Group - Marion



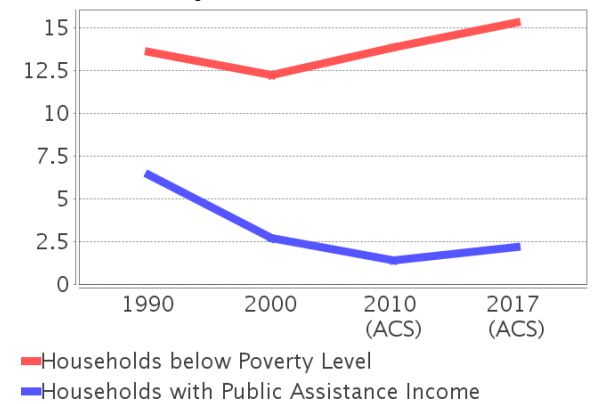
Income Trends - Marion

Description	1990	2000	2010 (ACS)	2017 (ACS)
Median Household Income	\$22,452	\$31,944	\$40,339	\$41,964
Median Family Income	\$26,089	\$37,473	\$47,614	\$50,922
Population below Poverty Level	14.58%	13.08%	15.27%	17.60%
Households below Poverty Level	13.60%	12.22%	13.82%	15.29%
Households with Public Assistance Income	6.39%	2.69%	1.41%	2.16%

Income Trends



Poverty and Public Assistance



Disability Trends - Marion

See the Data Sources section below for an explanation about the differences in disability data among the various years.

Description	1990	2000	2010 (ACS)	2017 (ACS)
Population 16 To 64 Years with a disability	14,066 (9.20%)	35,374 (14.73%)	NA (NA)	NA (NA)
Population 20 To 64 Years with a disability	NA (NA)	NA (NA)	NA (NA)	24,841 (14.64%)

Educational Attainment Trends - Marion

Age 25 and Over

Description	1990	2000	2010 (ACS)	2017 (ACS)
Less than 9th Grade	13,638 (9.95%)	11,414 (6.10%)	10,981 (4.60%)	9,296 (3.64%)
9th to 12th Grade, No Diploma	28,046 (20.47%)	29,399 (15.71%)	26,177 (10.95%)	24,472 (9.59%)
High School Graduate or Higher	95,317 (69.57%)	146,374 (78.20%)	201,804 (84.45%)	221,436 (86.77%)
Bachelor's Degree or Higher	15,765 (11.51%)	25,626 (13.69%)	40,778 (17.06%)	49,412 (19.36%)

Language Trends - Marion

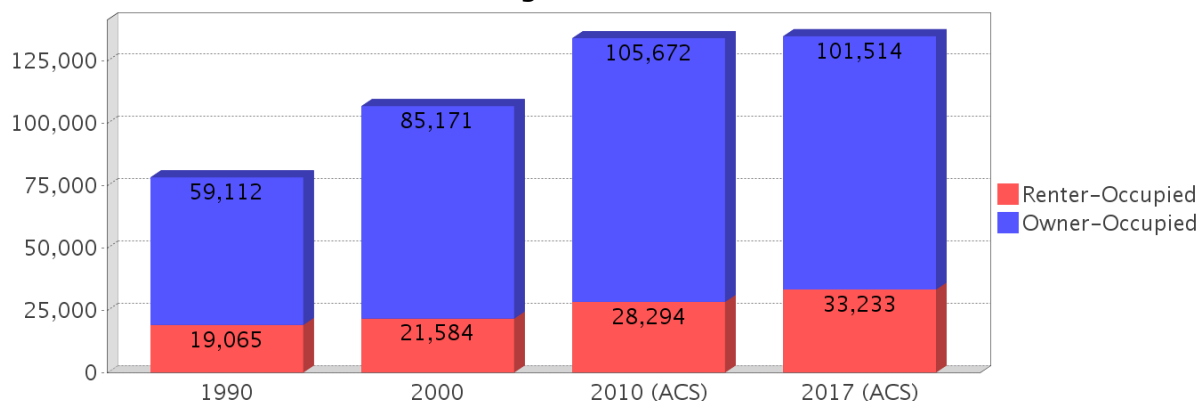
Age 5 and Over

Description	1990	2000	2010 (ACS)	2017 (ACS)
Speaks English Well	2,695 (1.48%)	4,123 (1.68%)	6,878 (2.22%)	6,659 (2.04%)
Speaks English Not Well	NA (NA)	2,830 (1.15%)	4,723 (1.53%)	3,328 (1.02%)
Speaks English Not at All	NA (NA)	812 (0.33%)	1,744 (0.56%)	1,110 (0.34%)
Speaks English Not Well or Not at All	1,523 (0.83%)	3,642 (1.48%)	6,467 (2.09%)	4,438 (1.36%)

Housing Trends - Marion

Description	1990	2000	2010 (ACS)	2017 (ACS)
Total	94,567	122,663	161,264	166,357
Units per Acre	0.089	0.115	0.152	0.156
Single-Family Units	47,000	75,857	108,996	114,452
Multi-Family Units	8,581	11,542	16,063	16,167
Mobile Home Units	22,130	34,455	35,841	35,531
Owner-Occupied Units	59,112	85,171	105,672	101,514
Renter-Occupied Units	19,065	21,584	28,294	33,233
Vacant Units	16,390	15,908	27,298	31,610
Median Housing Value	\$61,800	\$70,100	\$150,700	\$119,200
Occupied Housing Units w/No Vehicle	5,743 (7.35%)	6,206 (5.81%)	6,295 (4.70%)	6,935 (5.15%)

Housing Tenure - Marion



County Data Sources

Demographic data reported is from the U.S. Decennial Census (1990, 2000) and the American Community Survey (ACS) 5-year estimates from 2006-2010 and 2013-2017. The data was gathered at the county level. Depending on the dataset, the data represents 100% counts (Census Summary File 1) or sample-based information (Census Summary File 3 or ACS).

About the Census Data:

Use caution when comparing the 100% count data (Decennial Census) to the sample-based data (ACS). In any given year, about one in 40 or 2.5% of U.S. households will receive the ACS questionnaire. Over any five-year period, about one in eight households will receive the questionnaire, as compared to about one in six that received the long form questionnaire for the Decennial Census 2000. (Source: <http://mcdc.missouri.edu/pub/data/acs/Readme.shtml>) The U.S. Census Bureau provides help with this process:

<https://www.census.gov/programs-surveys/acs/guidance/comparing-acs-data/2017.html>

Use caution when interpreting changes in Race and Ethnicity over time. Starting with the 2000 Decennial Census, respondents were given a new option of selecting one or more race categories. Also in 2000, the placement of the question about Hispanic origin changed, helping to increase responsiveness to the Hispanic-origin question. Because of these and other changes, the 1990 data on race and ethnicity are not directly comparable with data from later censuses. (Source: <http://www.census.gov/prod/2001pubs/c2kbr01-1.pdf>; <http://www.census.gov/pred/www/rpts/Race%20and%20Ethnicity%20FINAL%20report.pdf>)

The "Minority" calculations are derived from Census and ACS data using both the race and ethnicity responses. On this report, "Minority" refers to individuals who list a race other than White and/or list their ethnicity as Hispanic/Latino. In other words, people who are multi-racial, any single race other than White, or Hispanic/Latino of any race are considered minorities.

Disability data is not included in the 2010 Decennial Census, or the 2006-2010 ACS. This data is available in the 2013-2017 ACS.

Because of changes made to the Census and ACS questions between 1990 and 2017, disability variables should not be compared from year to year. For example: 1) With the 1990 data the disabilities are listed as a "work disability" while this distinction is not made with 2000 or 2017 ACS data; 2) The 2017 ACS data includes the institutionalized population (e.g. persons in prisons and group homes), while this population is not included in 1990 or 2000; 3) the age groupings changed over the years.

Please take the following two concerns into account when viewing this data: 1) With the 1990 data the disabilities are listed as a "work disability" while this distinction is not made with 2000 or 2017 ACS data; 2) The 2017 ACS data includes the institutionalized population (e.g. persons in prisons and group homes), while this population is not included in 1990 or 2000.

source:

<https://www.census.gov/people/disability/methodology/acs.html>

<https://www.census.gov/population/www/cen2000/90vs00/index.html>

The category Bachelor's Degree or Higher under the heading Educational Attainment Trends is a subset of the category High School Graduate or Higher.

Metadata

- Community and Fraternal Centers https://etdmpub.fl.a-etat.org/metadata/gc_communitycenter.htm
- Correctional Facilities in Florida https://etdmpub.fl.a-etat.org/metadata/gc_correctional.htm
- Cultural Centers in Florida https://etdmpub.fl.a-etat.org/metadata/gc_culturecenter.htm
- Fire Department and Rescue Station Facilities in Florida https://etdmpub.fl.a-etat.org/metadata/gc_firestat.htm
- Local, State, and Federal Government Buildings in Florida https://etdmpub.fl.a-etat.org/metadata/gc_govbuild.htm
- Florida Health Care Facilities https://etdmpub.fl.a-etat.org/metadata/gc_health.htm
- Hospital Facilities in Florida https://etdmpub.fl.a-etat.org/metadata/gc_hospitals.htm
- Law Enforcement Facilities in Florida https://etdmpub.fl.a-etat.org/metadata/gc_lawenforce.htm
- Florida Parks and Recreational Facilities https://etdmpub.fl.a-etat.org/metadata/gc_parks.htm
- Religious Centers https://etdmpub.fl.a-etat.org/metadata/gc_religion.htm
- Florida Public and Private Schools https://etdmpub.fl.a-etat.org/metadata/gc_schools.htm
- Social Service Centers https://etdmpub.fl.a-etat.org/metadata/gc_socialservice.htm
- Assisted Rental Housing Units in Florida https://etdmpub.fl.a-etat.org/metadata/gc_assisted_housing.htm
- Group Care Facilities <https://etdmpub.fl.a-etat.org/metadata/groupcare.htm>
- Mobile Home Parks in Florida https://etdmpub.fl.a-etat.org/metadata/gc_mobilehomes.htm
- Migrant Camps in Florida <https://etdmpub.fl.a-etat.org/metadata/migrant.htm>
- Veteran Organizations and Facilities https://etdmpub.fl.a-etat.org/metadata/gc_veterans.htm
- Generalized Land Use - Florida DOT District 5 https://etdmpub.fl.a-etat.org/metadata/d5_lu_gen.htm
- Generalized Land Use - Florida DOT District 7 https://etdmpub.fl.a-etat.org/metadata/d7_lu_gen.htm
- Census Block Groups in Florida https://etdmpub.fl.a-etat.org/metadata/e2_cenacs_cci.htm
- 1990 Census Block Groups in Florida https://etdmpub.fl.a-etat.org/metadata/e2_cenblkgrp_1990_cci.htm
- 2000 Census Block Groups in Florida https://etdmpub.fl.a-etat.org/metadata/e2_cenblkgrp_2000_cci.htm
- 2010 Census Block Groups in Florida https://etdmpub.fl.a-etat.org/metadata/e2_cenblkgrp_2010_cci.htm