

Sociocultural Data Report

Homosassa

Area: 8,299 square miles
Jurisdiction(s): Cities: NA
 Counties: Citrus

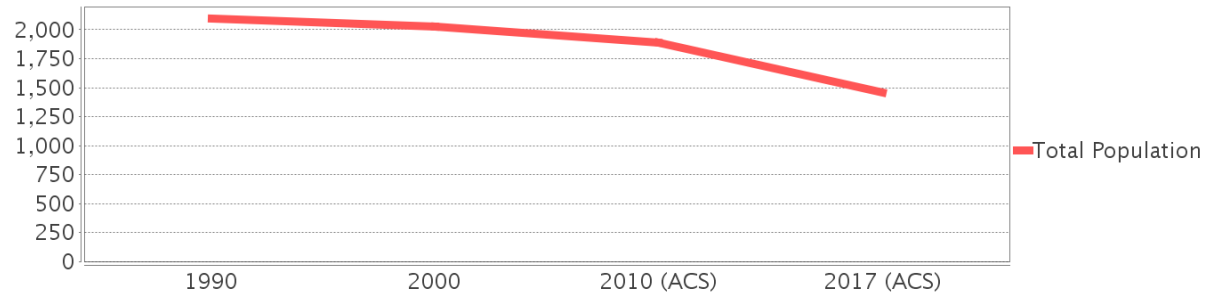
General Population Trends

Description	1990	2000	2010 (ACS)	2017 (ACS)
Total Population	2,095	2,024	1,888	1,460
Total Households	977	990	933	803
Average Persons per Acre	0.47	0.59	0.53	0.47
Average Persons per Household	2.17	2.12	2.00	1.94
Average Persons per Family	2.57	2.66	2.40	2.53
Males	1,024	967	924	677
Females	1,071	1,057	964	783

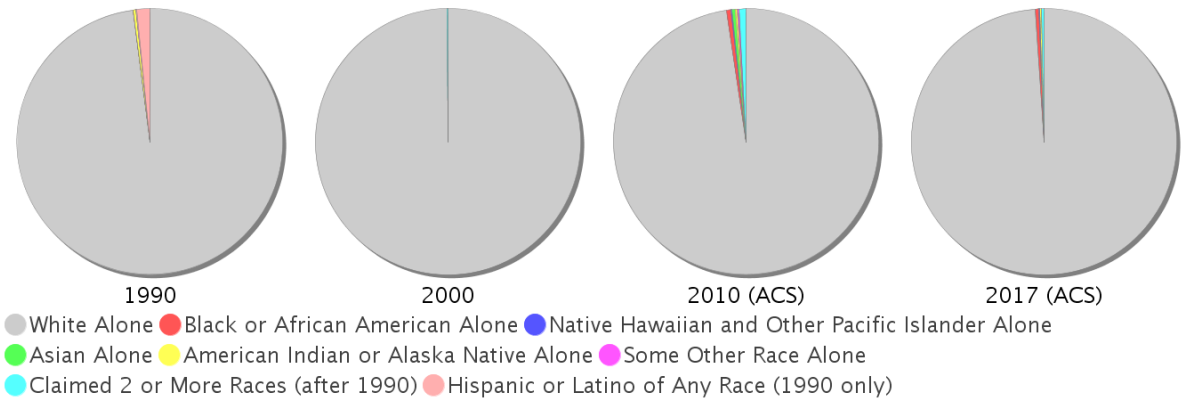
Race and Ethnicity Trends

Description	1990	2000	2010 (ACS)	2017 (ACS)
White Alone	2,086 (99.57%)	2,021 (99.85%)	1,844 (97.67%)	1,444 (98.90%)
Black or African American Alone	1 (0.05%)	0 (0.00%)	10 (0.53%)	6 (0.41%)
Native Hawaiian and Other Pacific Islander Alone	0 (0.00%)	0 (0.00%)	3 (0.16%)	2 (0.14%)
Asian Alone	0 (0.00%)	0 (0.00%)	7 (0.37%)	0 (0.00%)
American Indian or Alaska Native Alone	7 (0.33%)	0 (0.00%)	6 (0.32%)	3 (0.21%)
Some Other Race Alone	1 (0.05%)	0 (0.00%)	4 (0.21%)	0 (0.00%)
Claimed 2 or More Races	NA (NA)	3 (0.15%)	15 (0.79%)	4 (0.27%)
Hispanic or Latino of Any Race	35 (1.67%)	1 (0.05%)	29 (1.54%)	52 (3.56%)
Not Hispanic or Latino	2,060 (98.33%)	2,023 (99.95%)	1,859 (98.46%)	1,408 (96.44%)
Minority	42 (2.00%)	4 (0.20%)	67 (3.55%)	67 (4.59%)

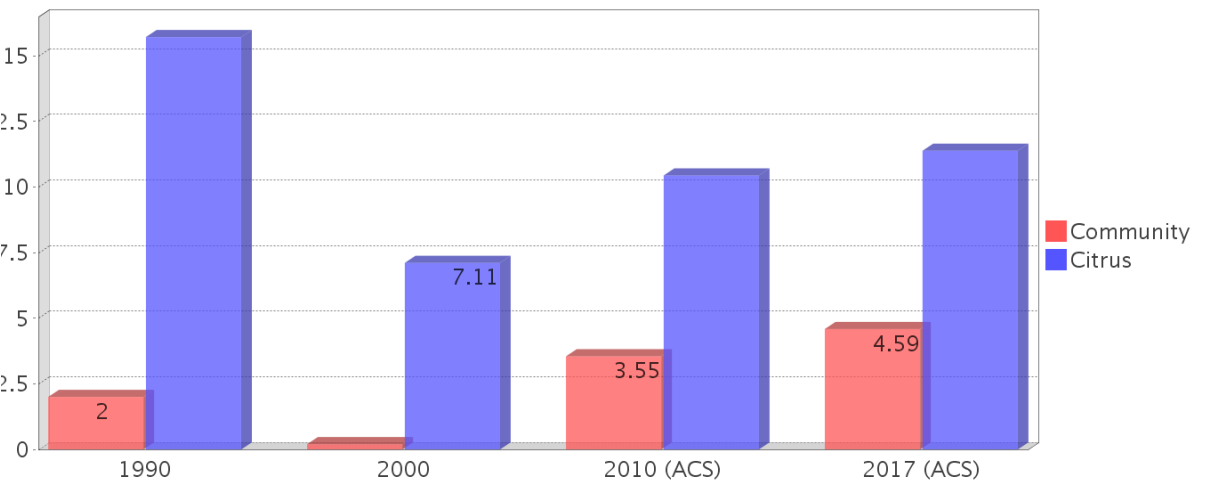
Population



Race



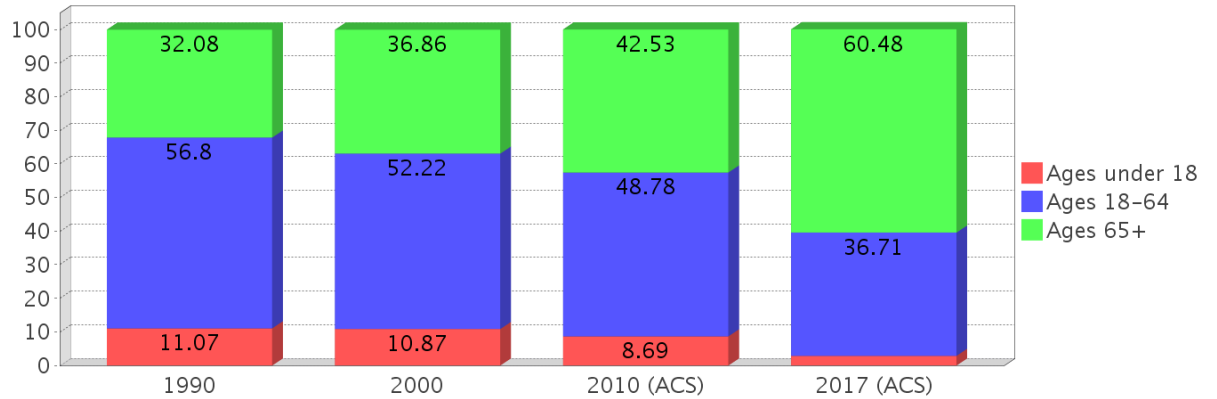
Minority Percentage Population



Age Trends

Description	1990	2000	2010 (ACS)	2017 (ACS)
Under Age 5	3.01%	2.47%	2.22%	0.27%
Ages 5-17	8.07%	8.40%	6.46%	2.60%
Ages 18-21	2.82%	2.92%	2.38%	0.75%
Ages 22-29	5.39%	2.52%	3.07%	0.62%
Ages 30-39	8.07%	6.92%	4.40%	1.51%
Ages 40-49	12.03%	9.68%	9.32%	3.22%
Ages 50-64	28.50%	30.19%	29.61%	30.62%
Age 65 and Over	32.08%	36.86%	42.53%	60.48%
-Ages 65-74	22.53%	21.84%	25.05%	32.53%
-Ages 75-84	7.83%	11.26%	14.30%	22.74%
-Age 85 and Over	1.72%	3.71%	3.23%	5.21%
Median Age	NA	50	56	66

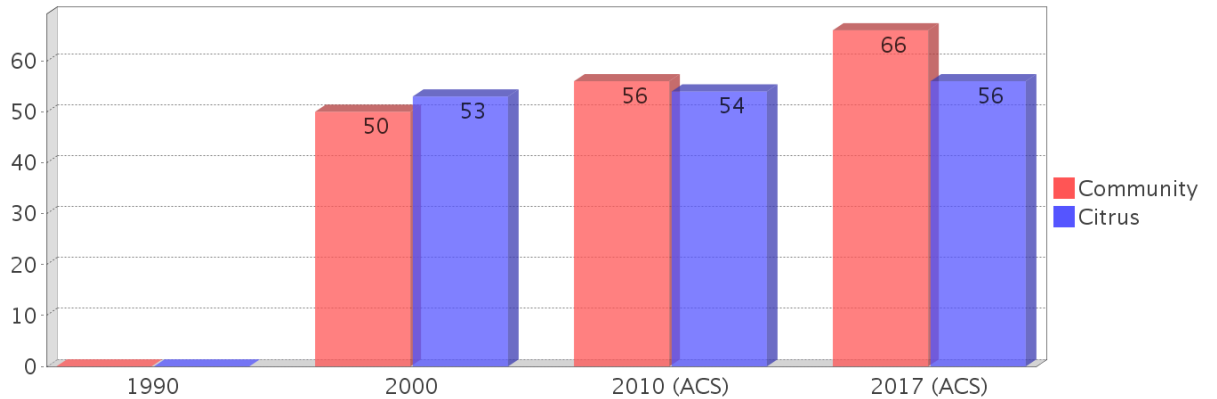
Percentage Population by Age Group



Income Trends

Description	1990	2000	2010 (ACS)	2017 (ACS)
Median Household Income	\$17,419	\$27,164	\$31,327	\$29,939
Median Family Income	\$21,063	\$31,036	\$41,125	\$48,077
Population below Poverty Level	10.21%	10.38%	11.55%	12.12%
Households below Poverty Level	9.52%	10.71%	10.40%	8.59%
Households with Public Assistance Income	5.73%	0.00%	0.54%	0.37%

Median Age Comparison

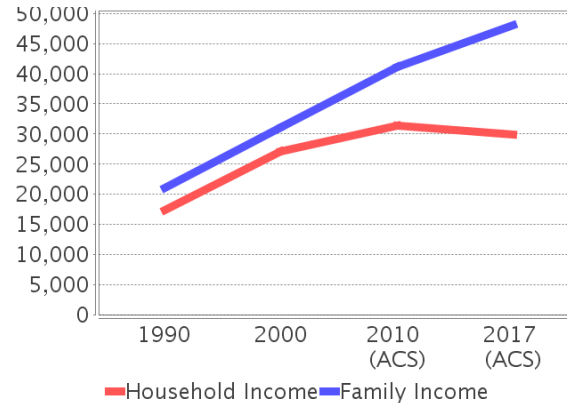


Disability Trends

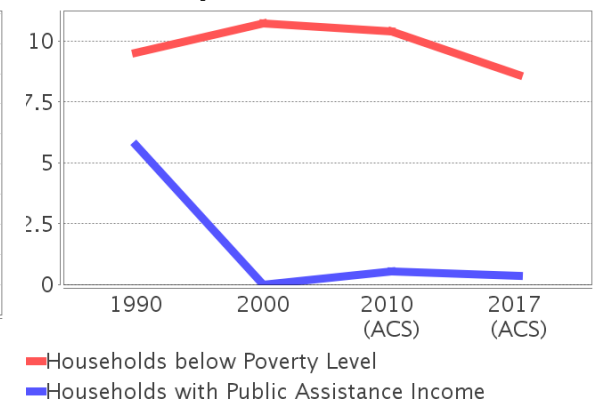
See the Data Sources section below for an explanation about the differences in disability data among the various years.

Description	1990	2000	2010 (ACS)	2017 (ACS)
Population 16 To 64 Years with a disability	126 (6.37%)	329 (16.67%)	(NA)	(NA)
Population 20 To 64 Years with a disability	(NA)	(NA)	(NA)	87 (16.60%)

Income Trends



Poverty and Public Assistance



Educational Attainment Trends

Age 25 and Over

Description	1990	2000	2010 (ACS)	2017 (ACS)
Less than 9th Grade	93 (5.05%)	72 (4.13%)	54 (3.23%)	23 (1.65%)
9th to 12th Grade, No Diploma	337 (18.29%)	233 (13.38%)	113 (6.76%)	92 (6.58%)
High School Graduate or Higher	1,413 (76.67%)	1,437 (82.49%)	1,505 (90.07%)	1,283 (91.77%)
Bachelor's Degree or Higher	266 (14.43%)	284 (16.30%)	360 (21.54%)	309 (22.10%)

Language Trends

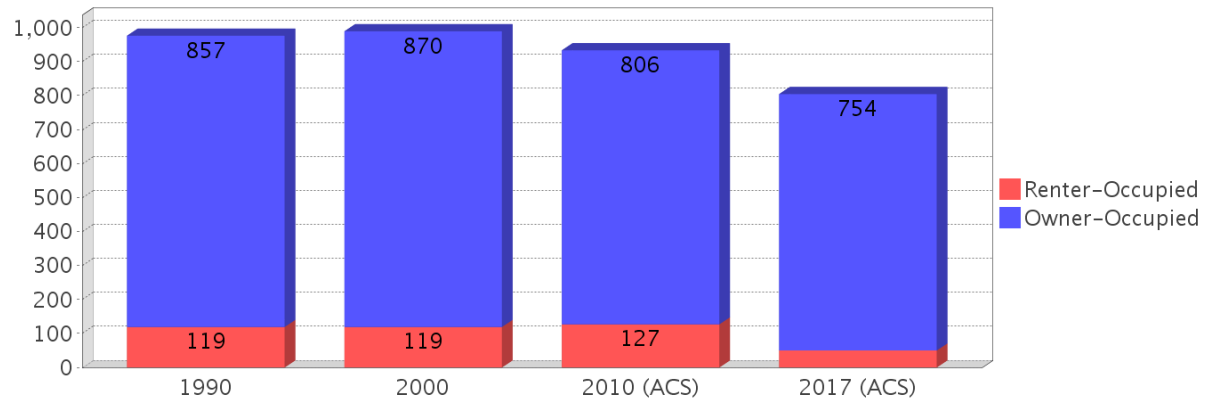
Age 5 and Over

Description	1990	2000	2010 (ACS)	2017 (ACS)
Speaks English Well	28 (1.31%)	11 (0.56%)	3 (0.16%)	3 (0.21%)
Speaks English Not Well	NA (NA)	0 (0.00%)	16 (0.87%)	0 (0.00%)
Speaks English Not at All	NA (NA)	0 (0.00%)	11 (0.60%)	0 (0.00%)
Speaks English Not Well or Not at All	15 (0.70%)	0 (0.00%)	27 (1.47%)	0 (0.00%)

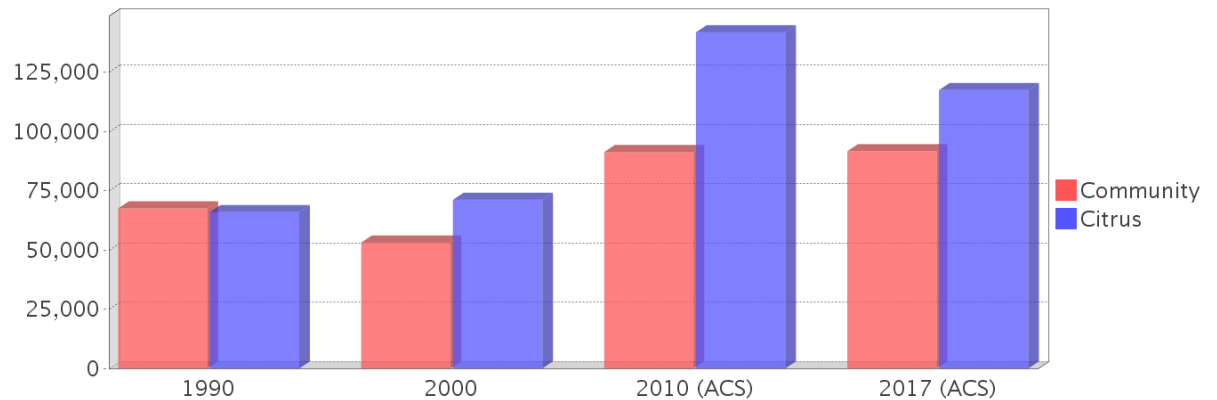
Housing Trends

Description	1990	2000	2010 (ACS)	2017 (ACS)
Total	1,454	1,400	1,425	1,308
Units per Acre	0.33	0.30	0.30	0.28
Single-Family Units	698	1,022	990	933
Multi-Family Units	16	12	7	16
Mobile Home Units	256	366	331	360
Owner-Occupied Units	857	870	806	754
Renter-Occupied Units	119	119	127	50
Vacant Units	477	411	492	505
Median Housing Value	\$67,500	\$53,100	\$91,300	\$91,600
Occupied Housing Units w/No Vehicle	20 (2.05%)	47 (4.75%)	11 (1.18%)	47 (5.85%)

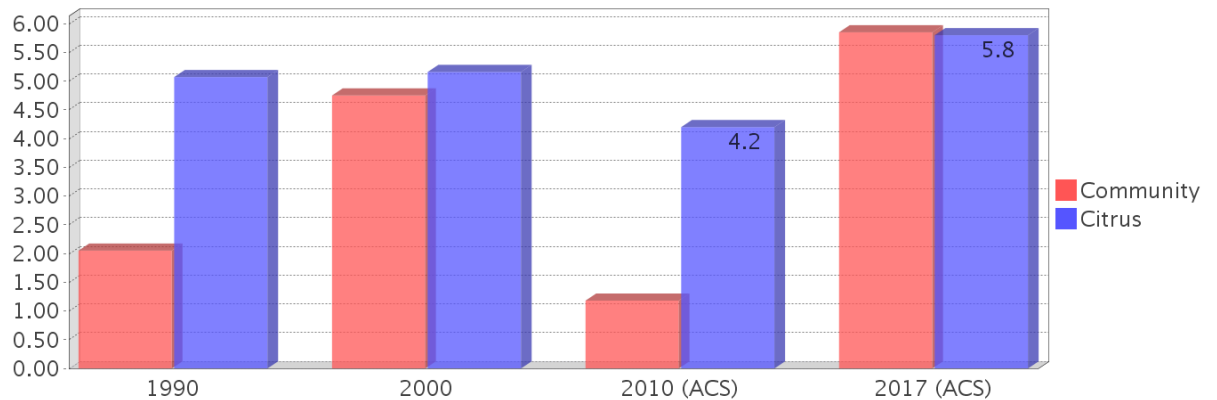
Housing Tenure



Median Housing Value Comparison

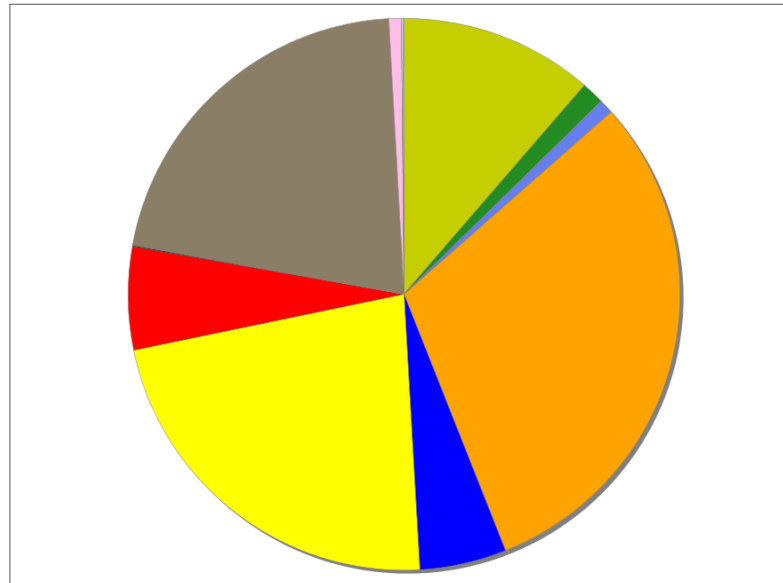


Occupied Units With No Vehicles Available



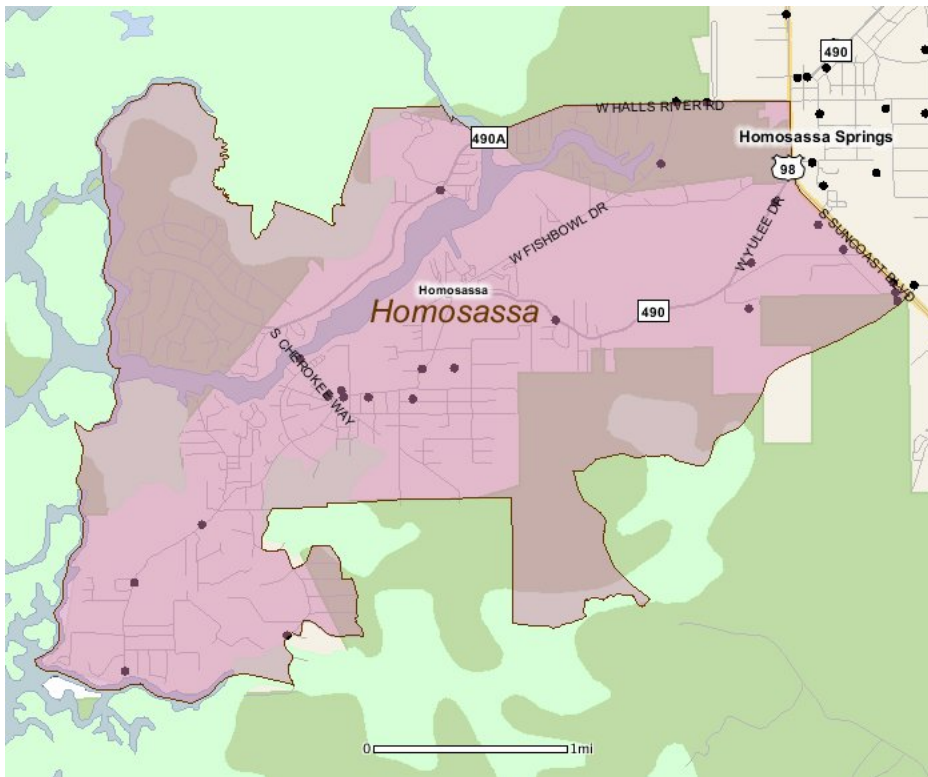
Existing Land Use

Land Use Type	Acres	Percentage
Acreage Not Zoned For Agriculture	498	9.38%
Agricultural	58	1.09%
Centrally Assessed	0	0.00%
Industrial	2	0.04%
Institutional	35	0.66%
Mining	0	0.00%
Other	1,339	25.21%
Public/Semi-Public	224	4.22%
Recreation	0	0.00%
Residential	994	18.72%
Retail/Office	265	4.99%
Row	3	0.06%
Vacant Residential	934	17.59%
Vacant Nonresidential	32	0.60%
Water	5	0.09%
Parcels With No Values	2	0.04%



- Acreage Not Zoned For Agriculture
- Agricultural
- Centrally Assessed
- Industrial
- Institutional
- Mining
- Other
- Public/Semi-Public
- Recreation
- Residential
- Retail/Office
- Row
- Vacant Residential
- Vacant Nonresidential
- Water
- Parcels With No Values

Location Maps



Community Facilities

The community facilities information below is useful in a variety of ways for environmental evaluations. These community resources should be evaluated for potential sociocultural effects, such as accessibility and relocation potential. The facility types may indicate the types of population groups present in the project study area. Facility staff and leaders can be sources of community information such as who uses the facility and how it is used. Additionally, community facilities are potential public meeting venues.

Cultural Centers (Points)

Facility Name	Address	Zip Code
ELLIE SCHILLER HOMOSASSA SPRINGS WILDLIFE STATE PARK	4150 S SUNCOAST BLVD	34446

Florida Parks and Recreational Facilities (Points)

Facility Name	Address	Zip Code
HOMOSASSA WILDLIFE MANAGEMENT AREA TRAILHEAD	5000 S SUNCOAST BLVD	34448
ELLIE SCHILLER HOMOSASSA SPRINGS WILDLIFE STATE PARK (SECONDARY ENTRANCE)	9340 W FISHBOWL DR	34448
MASON CREEK AT SOUTH HANCOCK ROAD BOAT RAMP	S HANCOCK RD AT MASON CREEK	34448
HOMOSASSA PUBLIC BOAT RAMP	5300 SOUTH CHEROKEE WAY	34448
ELLIE SCHILLER HOMOSASSA SPRINGS WILDLIFE STATE PARK (MAIN ENTRANCE)	4150 S SUNCOAST BLVD	34448
YULEE SUGAR MILL RUINS HISTORIC STATE PARK (MAIN ENTRANCE)	10510 W YULEE DR	34448
BLUE BIRD SPRINGS	8750 W BLUEBIRD SPRINGS LN	34446
MASON CREEK BOAT RAMP	6891 S MASON CREEK ROAD	34448
CHASSAHOWITZKA NATIONAL WILDLIFE REFUGE - SALT MARSH BIRDING, LASTING TOWER AND RED CEDAR TRAILHEAD	6250 S MASON CREEK RD	34448

Government Building

Facility Name	Address	Zip Code
U S POST OFFICE - HOMOSASSA	10780 W YULEE DR	34487
U S POST OFFICE - HOMOSASSA SPRINGS	4610 S SUNCOAST BLVD	34446

Healthcare Facilities (Geocoded)

Facility Name	Address	Zip Code
ELAINE WARD, D.D.O.	4930 S SUNCOAST BOULEVARD	34446

Mobile Home Parks in Florida

Facility Name	Address	Zip Code
CEDAR PARK	9820 W YULEE DR	34448
CEDARS LAKE MH & RV PARK	6400 SOUTH MASON CREEK ROAD	34448
SEAGRASS RIVER RESORT	10410 W HALLS RIVER RD	34448
SPORTSMAN'S COVE	10391 W FISHBOWL DR	34448

Public and Private Schools (Points)

Facility Name	Address	Zip Code
HOMOSASSA ELEMENTARY SCHOOL	10935 W YULEE DR	34448

Religious Centers (Points)

Facility Name	Address	Zip Code
FIRST BAPTIST CHURCH OF HOMOSASSA	10540 WEST YULEE DRIVE	34448
FIRST UNITED METHODIST CHURCH OF HOMASASSA	8831 WEST BRADSHAW BOULEVARD	34448
CHURCH OF JESUS CHRIST	5456 S CHEROKEE WAY	34446
NATURE COAST COMMUNITY CHURCH	4980 S SUNCOAST BOULEVARD	34446
GREATER LIFE CHURCH	10340 W PENNSYLVANIA STREET	34448
HOMOSASSA CHURCH OF GOD	8323 W BRADSHAW BOULEVARD	34448

US Census Places

Facility Name

Homosassa

Homosassa Springs

Block Groups

The following Census Block Groups were used to calculate demographics for this report.

1990 Census Block Groups

120179817003, 120179817002, 120179817004, 120179817001, 120179817005, 120179815002

2000 Census Block Groups

120179817002, 120179817004, 120179817005, 120179815002, 120179817003, 120179815003, 120179817001

2010 Census Block Groups

120174517002, 120174517001, 120174517003, 120174517004, 120174515021

2017 Census Block Groups

120174517003, 120174515021, 120174517002, 120174517001, 120174517004

Data Sources

Area

The geographic area of the community based on a user-specified community boundary or area of interest (AOI) boundary.

Jurisdiction

Jurisdiction(s) includes local government boundaries that intersect the community or AOI boundary.

Demographic Data

Demographic data reported under the headings General Population Trends, Race and Ethnicity Trends, Age Trends, Income Trends, Educational Attainment Trends, Language Trends, and Housing Trends is from the U.S. Decennial Census (1990, 2000) and the American Community Survey (ACS) 5-year estimates from 2006-2010 and 2013-2017. The data was gathered at the block group level for user-specified community boundaries and AOIs, and at the county level for counties. Depending on the dataset, the data represents 100% counts (Census Summary File 1) or sample-based information (Census Summary File 3 or ACS).

About the Census Data:

User-specified community boundaries and AOIs do not always correspond precisely to block group boundaries. In these instances, adjustment of the geographic area and data for affected block groups is required to estimate the actual population. To improve the accuracy of such estimates in the SDR report, the census block group data was adjusted to exclude all census blocks with a population of two or fewer. These areas were eliminated from the corresponding years' block groups. Next, the portion of the block group that lies outside of the community or AOI boundary was removed. The demographics within each block group were then recalculated, assuming an equal area distribution of the population. Note that there may be areas where there is no population.

Use caution when comparing the 100% count data (Decennial Census) to the sample-based data (ACS). In any given year, about one in 40 or 2.5% of U.S. households will receive the ACS questionnaire. Over any five-year period, about one in eight households will receive the questionnaire, as compared to about one in six that received the long form questionnaire for the Decennial Census 2000. (Source: <http://mcdc.missouri.edu/pub/data/acs/Readme.shtml>) The U.S. Census Bureau provides help with this process:

<https://www.census.gov/programs-surveys/acs/guidance/comparing-acs-data/2017.html>

Use caution when interpreting changes in Race and Ethnicity over time. Starting with the 2000 Decennial Census, respondents were given a new option of selecting one or more race categories. Also in 2000, the placement of the question about Hispanic origin changed, helping to increase responsiveness to the Hispanic-origin question. Because of these and other changes, the 1990 data on race and ethnicity are not directly comparable with data from later censuses. (Source: <http://www.census.gov/prod/2001pubs/c2kbr01-1.pdf>; <http://www.census.gov/pred/www/rpts/Race%20and%20Ethnicity%20FINAL%20report.pdf>)

The "Minority" calculations are derived from Census and ACS data using both the race and ethnicity responses. On this report, "Minority" refers to individuals who list a race other than White and/or list their ethnicity as Hispanic/Latino. In other words, people who are multi-racial, any single race other than White, or Hispanic/Latino of any race are considered minorities.

Disability data is not included in the 2010 Decennial Census, or the 2006-2010 ACS. This data is available in the 2013-2017 ACS.

Because of changes made to the Census and ACS questions between 1990 and 2017, disability variables should not be compared from year to year. For example: 1) With the 1990 data the disabilities are listed as a "work disability" while this distinction is not made with 2000 or 2017 ACS data; 2) The 2017 ACS data includes the institutionalized population (e.g. persons in prisons and group homes), while this population is not included in 1990 or 2000; 3) the age groupings changed over the years.

Please take the following two concerns into account when viewing this data: 1) With the 1990 data the disabilities are listed as a "work disability" while this distinction is not made with 2000 or 2017 ACS data; 2) The 2017 ACS data includes the institutionalized population (e.g. persons in prisons and group homes), while this population is not included in 1990 or 2000.

The category Bachelor's Degree or Higher under the heading Educational Attainment Trends is a subset of the category High School Graduate or Higher.

Income of households. This includes the income of the householder and all other individuals 15 years old and over in the household, whether they are related to the householder or not. Because many households consist of only one person, average household income is usually less than average family income.

Income of families. In compiling statistics on family income, the incomes of all members 15 years old and over related to the householder are summed and treated as a single amount.

Age Trends median age for 1990 is not available.

Land Use Data

The Land Use information Indicates acreages and percentages for the generalized land use types used to group parcel-specific, existing land use assigned by the county property appraiser office according to the Florida Department of Revenue land use codes.

Community Facilities Data

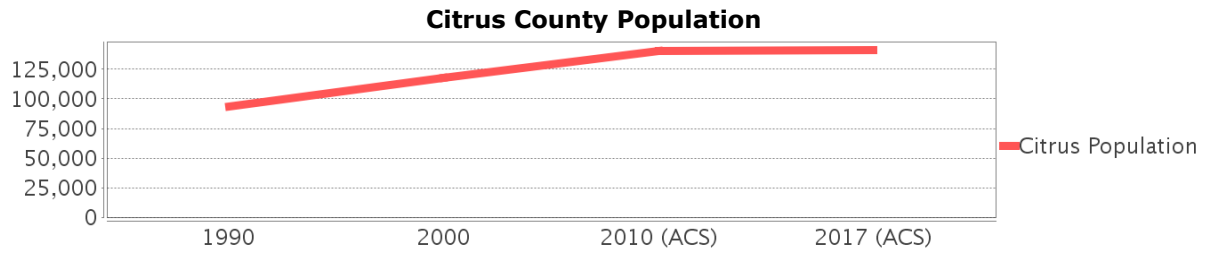
- Assisted Rental Housing Units - Identifies multifamily rental developments that receive funding assistance under federal, state, and local government programs to offer affordable housing as reported by the Shimberg Center for Housing Studies, University of Florida.
- Mobile Home Parks - Identifies approved or acknowledged mobile home parks reported by the Florida Department of Business and Professional Regulation and Florida Department of Health.
- Migrant Camps - Identifies migrant labor camp facilities inspected by the Florida Department of Health.
- Group Care Facilities - Identifies group care facilities inspected by the Florida Department of Health.

- Community Center and Fraternal Association Facilities - Identifies facilities reported by multiple sources.
- Law Enforcement Correctional Facilities - Identifies facilities reported by multiple sources.
- Cultural Centers - Identifies cultural centers including organizations, buildings, or complexes that promote culture and arts (e.g., aquariums and zoological facilities; arboreta and botanical gardens; dinner theaters; drive-ins; historical places and services; libraries; motion picture theaters; museums and art galleries; performing arts centers; performing arts theaters; planetariums; studios and art galleries; and theater producers stage facilities) reported by multiple sources.
- Fire Department and Rescue Station Facilities - Identifies facilities reported by multiple sources.
- Government Buildings - Identifies local, state, and federal government buildings reported by multiple sources.
- Health Care Facilities - Identifies health care facilities including abortion clinics, dialysis clinics, medical doctors, nursing homes, osteopaths, state laboratories/clinics, and surgicenters/walk-in clinics reported by the Florida Department of Health.
- Hospital Facilities - Identifies hospital facilities reported by multiple sources.
- Law Enforcement Facilities - Identifies law enforcement facilities reported by multiple sources.
- Parks and Recreational Facilities - Identifies parks and recreational facilities reported by multiple sources.
- Religious Center Facilities - Identifies religious centers including churches, temples, synagogues, mosques, chapels, centers, and other types of religious facilities reported by multiple sources.
- Private and Public Schools - Identifies private and public schools reported by multiple sources.
- Social Service Centers - Identifies social service centers reported by multiple sources.
- Veteran Organizations and Facilities

Citrus County Demographic Profile

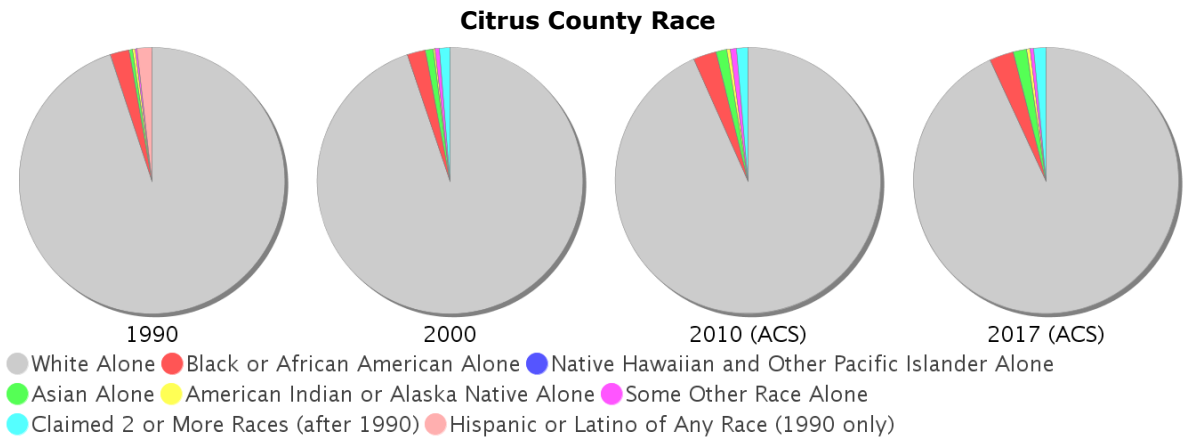
General Population Trends - Citrus

Description	1990	2000	2010 (ACS)	2017 (ACS)
Total Population	93,515	118,085	140,686	141,373
Total Households	40,573	52,634	59,974	62,488
Average Persons per Acre	0.231	0.294	0.351	0.353
Average Persons per Household	2.305	2.201	2.00	2.22
Average Persons per Family	2.676	2.656	2.861	2.829
Males	44,711	56,661	68,183	68,487
Females	48,804	61,424	72,503	72,886



Race and Ethnicity Trends - Citrus

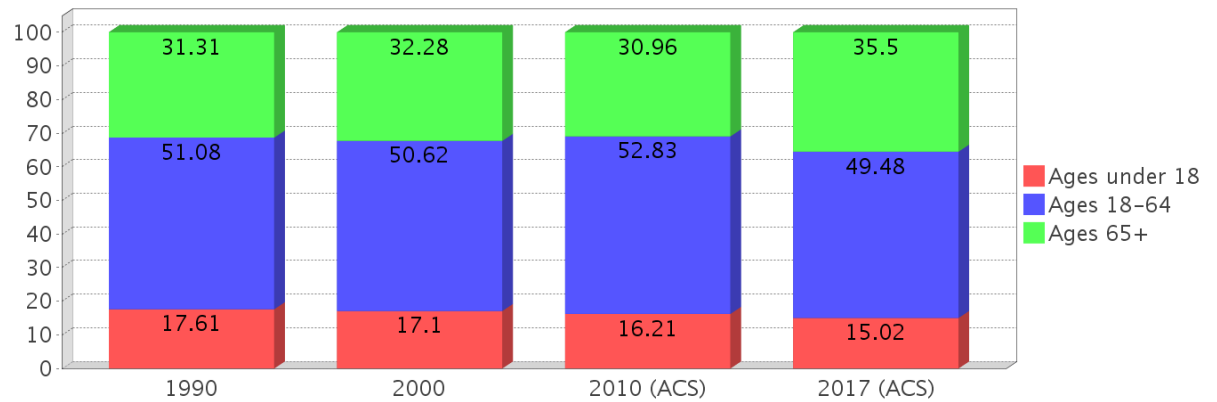
Description	1990	2000	2010 (ACS)	2017 (ACS)
White Alone	90,411 (96.68%)	111,930 (94.79%)	131,271 (93.31%)	131,599 (93.09%)
Black or African American Alone	2,206 (2.36%)	2,674 (2.26%)	3,942 (2.80%)	4,165 (2.95%)
Native Hawaiian and Other Pacific Islander Alone	(NA)	0 (0.00%)	33 (0.02%)	7 (0.00%)
Asian Alone	392 (0.42%)	1,145 (0.97%)	1,851 (1.32%)	2,354 (1.67%)
American Indian or Alaska Native Alone	283 (0.30%)	230 (0.19%)	606 (0.43%)	499 (0.35%)
Some Other Race Alone	220 (0.24%)	616 (0.52%)	1,026 (0.73%)	631 (0.45%)
Claimed 2 or More Races	(NA)	1,490 (1.26%)	1,957 (1.39%)	2,118 (1.50%)
Hispanic or Latino of Any Race	1,702 (1.82%)	3,058 (2.59%)	6,171 (4.39%)	7,528 (5.32%)
Not Hispanic or Latino	91,813 (98.18%)	115,027 (97.41%)	134,515 (95.61%)	133,845 (94.68%)
Minority	14,687 (15.71%)	8,394 (7.11%)	14,687 (10.44%)	16,085 (11.38%)



Age Trends - Citrus

Description	1990	2000	2010 (ACS)	2017 (ACS)
Under Age 5	4.75%	3.76%	3.91%	3.85%
Ages 5-17	12.86%	13.34%	12.31%	11.17%
Ages 18-21	3.19%	3.01%	3.62%	3.42%
Ages 22-29	7.27%	4.92%	5.51%	6.25%
Ages 30-39	11.04%	9.99%	7.96%	7.80%
Ages 40-49	10.13%	11.81%	11.75%	9.34%
Ages 50-64	19.45%	20.90%	23.99%	22.68%
Age 65 and Over	31.31%	32.28%	30.96%	35.50%
-Ages 65-74	19.81%	17.34%	16.75%	19.46%
-Ages 75-84	9.53%	11.77%	10.51%	11.81%
-Age 85 and Over	1.98%	3.17%	3.70%	4.22%
Median Age	NA	53	54	56

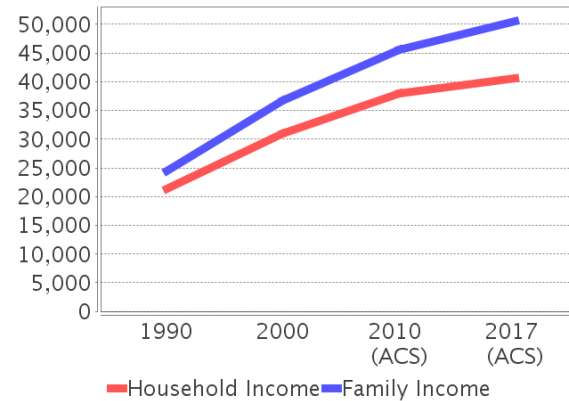
Percentage Population by Age Group - Citrus



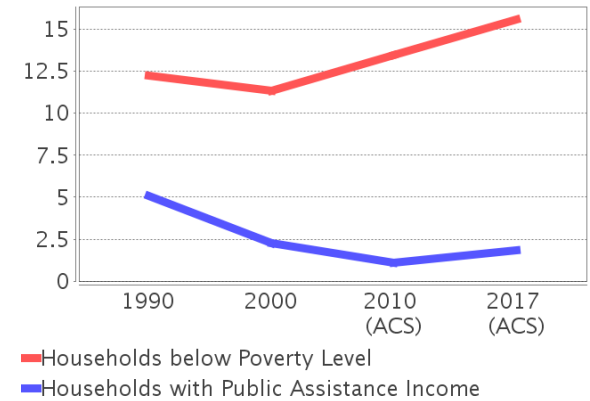
Income Trends - Citrus

Description	1990	2000	2010 (ACS)	2017 (ACS)
Median Household Income	\$21,285	\$31,001	\$37,933	\$40,574
Median Family Income	\$24,465	\$36,711	\$45,568	\$50,551
Population below Poverty Level	12.56%	11.68%	14.42%	17.39%
Households below Poverty Level	12.22%	11.32%	13.43%	15.56%
Households with Public Assistance Income	5.10%	2.28%	1.12%	1.82%

Income Trends



Poverty and Public Assistance



Disability Trends - Citrus

See the Data Sources section below for an explanation about the differences in disability data among the various years.

Description	1990	2000	2010 (ACS)	2017 (ACS)
Population 16 To 64 Years with a disability	6,769 (8.70%)	16,712 (14.92%)	NA (NA)	NA (NA)
Population 20 To 64 Years with a disability	NA (NA)	NA (NA)	NA (NA)	11,326 (17.00%)

Educational Attainment Trends - Citrus

Age 25 and Over

Description	1990	2000	2010 (ACS)	2017 (ACS)
Less than 9th Grade	7,219 (10.02%)	5,003 (5.40%)	4,751 (4.32%)	3,650 (3.26%)
9th to 12th Grade, No Diploma	15,427 (21.41%)	15,075 (16.28%)	11,708 (10.64%)	10,496 (9.37%)
High School Graduate or Higher	49,408 (68.57%)	72,516 (78.32%)	93,582 (85.04%)	97,887 (87.37%)
Bachelor's Degree or Higher	7,480 (10.38%)	12,177 (13.15%)	18,177 (16.52%)	19,994 (17.85%)

Language Trends - Citrus

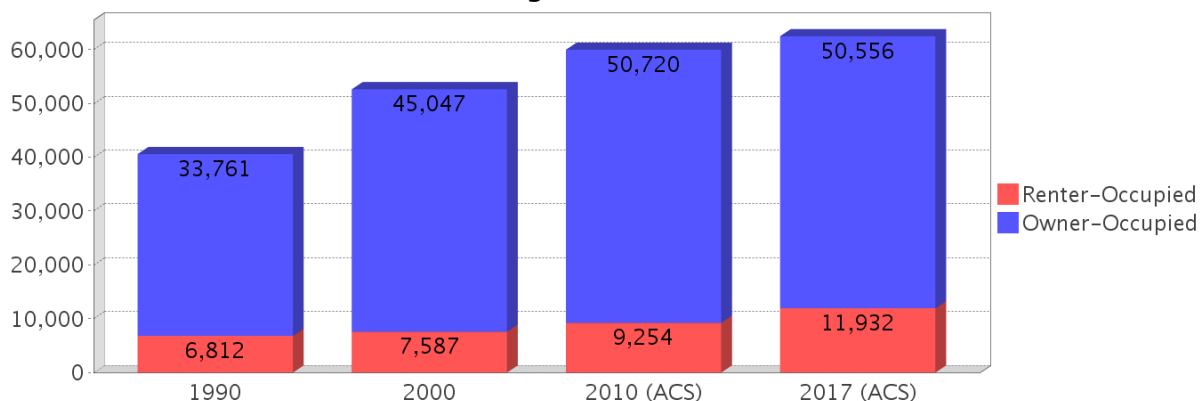
Age 5 and Over

Description	1990	2000	2010 (ACS)	2017 (ACS)
Speaks English Well	1,166 (1.31%)	1,712 (1.51%)	1,475 (1.09%)	1,618 (1.19%)
Speaks English Not Well	NA (NA)	794 (0.70%)	718 (0.53%)	772 (0.57%)
Speaks English Not at All	NA (NA)	184 (0.16%)	235 (0.17%)	457 (0.34%)
Speaks English Not Well or Not at All	577 (0.65%)	978 (0.86%)	953 (0.70%)	1,229 (0.90%)

Housing Trends - Citrus

Description	1990	2000	2010 (ACS)	2017 (ACS)
Total	49,854	62,204	76,813	78,825
Units per Acre	0.123	0.155	0.192	0.197
Single-Family Units	26,581	41,314	51,857	55,727
Multi-Family Units	2,103	3,542	4,111	4,844
Mobile Home Units	11,752	17,212	20,704	18,152
Owner-Occupied Units	33,761	45,047	50,720	50,556
Renter-Occupied Units	6,812	7,587	9,254	11,932
Vacant Units	9,281	9,570	16,839	16,337
Median Housing Value	\$65,900	\$71,100	\$141,800	\$117,400
Occupied Housing Units w/No Vehicle	2,058 (5.07%)	2,717 (5.16%)	2,520 (4.20%)	3,623 (5.80%)

Housing Tenure - Citrus



County Data Sources

Demographic data reported is from the U.S. Decennial Census (1990, 2000) and the American Community Survey (ACS) 5-year estimates from 2006-2010 and 2013-2017. The data was gathered at the county level. Depending on the dataset, the data represents 100% counts (Census Summary File 1) or sample-based information (Census Summary File 3 or ACS).

About the Census Data:

Use caution when comparing the 100% count data (Decennial Census) to the sample-based data (ACS). In any given year, about one in 40 or 2.5% of U.S. households will receive the ACS questionnaire. Over any five-year period, about one in eight households will receive the questionnaire, as compared to about one in six that received the long form questionnaire for the Decennial Census 2000. (Source: <http://mcdc.missouri.edu/pub/data/acs/Readme.shtml>) The U.S. Census Bureau provides help with this process:

<https://www.census.gov/programs-surveys/acs/guidance/comparing-acs-data/2017.html>

Use caution when interpreting changes in Race and Ethnicity over time. Starting with the 2000 Decennial Census, respondents were given a new option of selecting one or more race categories. Also in 2000, the placement of the question about Hispanic origin changed, helping to increase responsiveness to the Hispanic-origin question. Because of these and other changes, the 1990 data on race and ethnicity are not directly comparable with data from later censuses. (Source: <http://www.census.gov/prod/2001pubs/c2kbr01-1.pdf>;
<http://www.census.gov/pred/www/rpts/Race%20and%20Ethnicity%20FINAL%20report.pdf>)

The "Minority" calculations are derived from Census and ACS data using both the race and ethnicity responses. On this report, "Minority" refers to individuals who list a race other than White and/or list their ethnicity as Hispanic/Latino. In other words, people who are multi-racial, any single race other than White, or Hispanic/Latino of any race are considered minorities.

Disability data is not included in the 2010 Decennial Census, or the 2006-2010 ACS. This data is available in the 2013-2017 ACS.

Because of changes made to the Census and ACS questions between 1990 and 2017, disability variables should not be compared from year to year. For example: 1) With the 1990 data the disabilities are listed as a "work disability" while this distinction is not made with 2000 or 2017 ACS data; 2) The 2017 ACS data includes the institutionalized population (e.g. persons in prisons and group homes), while this population is not included in 1990 or 2000; 3) the age groupings changed over the years.

Please take the following two concerns into account when viewing this data: 1) With the 1990 data the disabilities are listed as a "work disability" while this distinction is not made with 2000 or 2017 ACS data; 2) The 2017 ACS data includes the institutionalized population (e.g. persons in prisons and group homes), while this population is not included in 1990 or 2000.

source:

<https://www.census.gov/people/disability/methodology/acs.html>

<https://www.census.gov/population/www/cen2000/90vs00/index.html>

The category Bachelor's Degree or Higher under the heading Educational Attainment Trends is a subset of the category High School Graduate or Higher.

Metadata

- Community and Fraternal Centers https://etdmpub.florida-etat.org/metadata/gc_communitycenter.htm
- Correctional Facilities in Florida https://etdmpub.florida-etat.org/metadata/gc_correctional.htm
- Cultural Centers in Florida https://etdmpub.florida-etat.org/metadata/gc_culturecenter.htm
- Fire Department and Rescue Station Facilities in Florida https://etdmpub.florida-etat.org/metadata/gc_firestat.htm
- Local, State, and Federal Government Buildings in Florida https://etdmpub.florida-etat.org/metadata/gc_govbuild.htm
- Florida Health Care Facilities https://etdmpub.florida-etat.org/metadata/gc_health.htm
- Hospital Facilities in Florida https://etdmpub.florida-etat.org/metadata/gc_hospitals.htm
- Law Enforcement Facilities in Florida https://etdmpub.florida-etat.org/metadata/gc_lawenforce.htm
- Florida Parks and Recreational Facilities https://etdmpub.florida-etat.org/metadata/gc_parks.htm
- Religious Centers https://etdmpub.florida-etat.org/metadata/gc_religion.htm
- Florida Public and Private Schools https://etdmpub.florida-etat.org/metadata/gc_schools.htm
- Social Service Centers https://etdmpub.florida-etat.org/metadata/gc_socialservice.htm
- Assisted Rental Housing Units in Florida https://etdmpub.florida-etat.org/metadata/gc_assisted_housing.htm
- Group Care Facilities <https://etdmpub.florida-etat.org/metadata/groupcare.htm>
- Mobile Home Parks in Florida https://etdmpub.florida-etat.org/metadata/gc_mobilehomes.htm
- Migrant Camps in Florida <https://etdmpub.florida-etat.org/metadata/migrant.htm>
- Veteran Organizations and Facilities https://etdmpub.florida-etat.org/metadata/gc_veterans.htm
- Generalized Land Use - Florida DOT District 7 https://etdmpub.florida-etat.org/metadata/d7_lu_gen.htm
- Census Block Groups in Florida https://etdmpub.florida-etat.org/metadata/e2_cenacs_cci.htm
- 1990 Census Block Groups in Florida https://etdmpub.florida-etat.org/metadata/e2_cenblkgrp_1990_cci.htm
- 2000 Census Block Groups in Florida https://etdmpub.florida-etat.org/metadata/e2_cenblkgrp_2000_cci.htm
- 2010 Census Block Groups in Florida https://etdmpub.florida-etat.org/metadata/e2_cenblkgrp_2010_cci.htm