

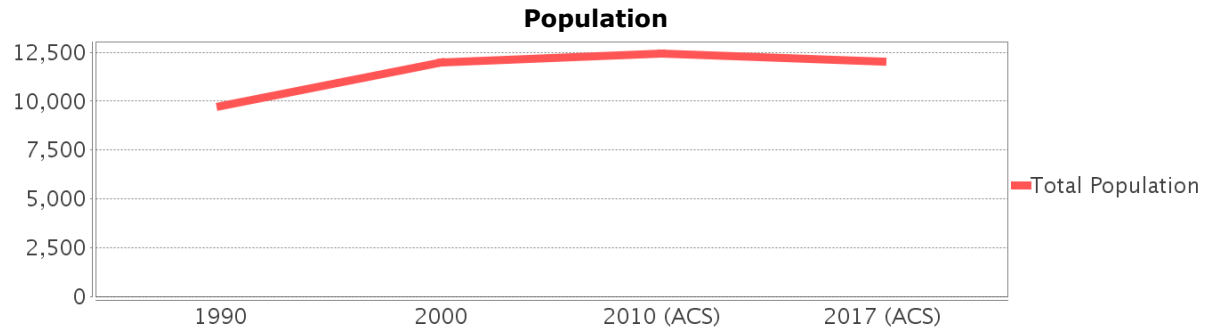
# Sociocultural Data Report

## Homosassa Springs

**Area:** 25.151 square miles  
**Jurisdiction(s):** **Cities:** Crystal River  
**Counties:** Citrus

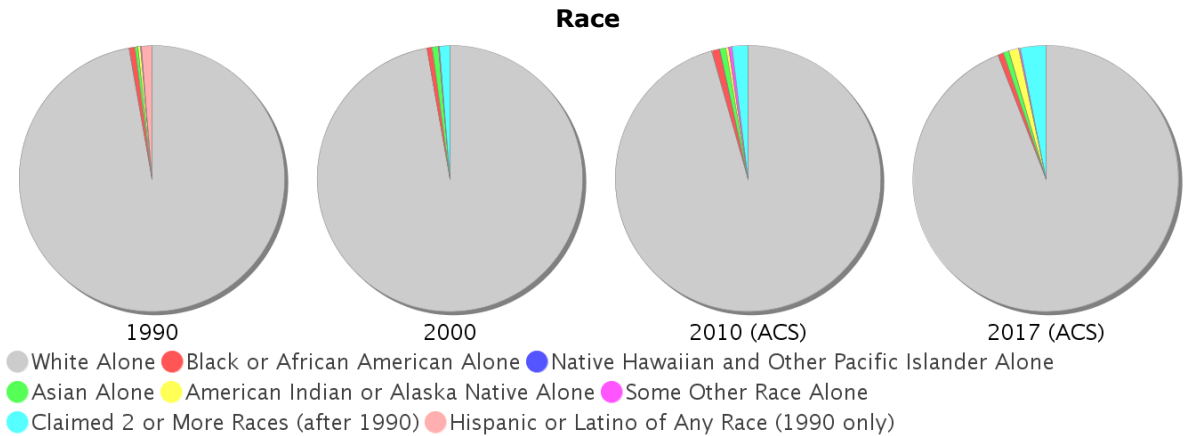
## General Population Trends

Description	1990	2000	2010 (ACS)	2017 (ACS)
Total Population	9,744	11,980	12,427	12,023
Total Households	3,935	5,033	5,435	5,043
Average Persons per Acre	0.47	0.54	0.71	0.69
Average Persons per Household	2.41	2.27	2.00	2.23
Average Persons per Family	2.83	2.75	2.88	2.89
Males	4,805	5,928	6,115	5,851
Females	4,939	6,051	6,312	6,172

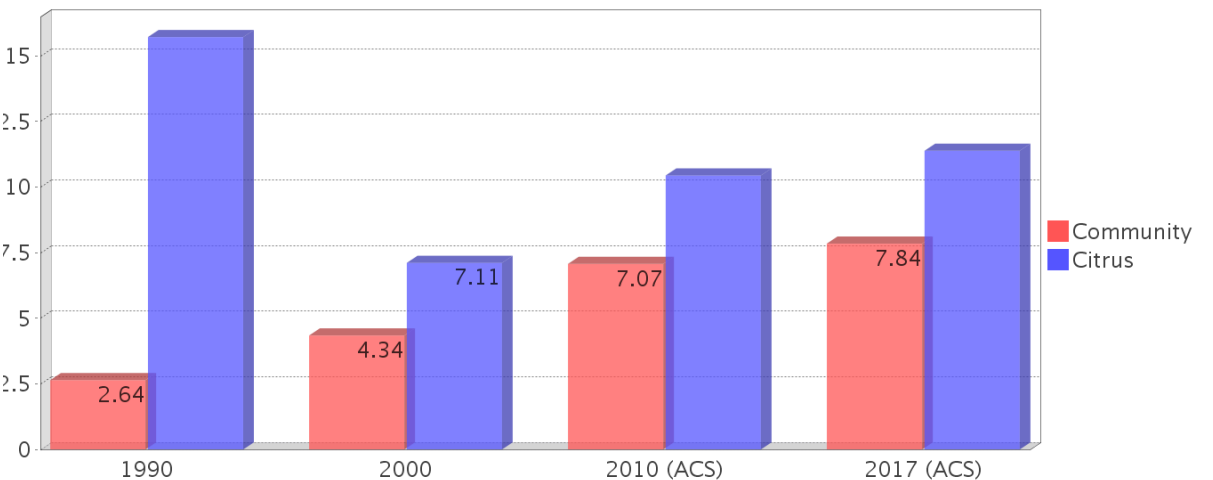


## Race and Ethnicity Trends

Description	1990	2000	2010 (ACS)	2017 (ACS)
White Alone	9,597 (98.49%)	11,644 (97.20%)	11,884 (95.63%)	11,313 (94.09%)
Black or African American Alone	66 (0.68%)	76 (0.63%)	117 (0.94%)	83 (0.69%)
Native Hawaiian and Other Pacific Islander Alone	0 (0.00%)	0 (0.00%)	2 (0.02%)	0 (0.00%)
Asian Alone	39 (0.40%)	90 (0.75%)	87 (0.70%)	88 (0.73%)
American Indian or Alaska Native Alone	30 (0.31%)	6 (0.05%)	48 (0.39%)	147 (1.22%)
Some Other Race Alone	12 (0.12%)	13 (0.11%)	47 (0.38%)	18 (0.15%)
Claimed 2 or More Races	NA (NA)	151 (1.26%)	242 (1.95%)	375 (3.12%)
Hispanic or Latino of Any Race	123 (1.26%)	243 (2.03%)	446 (3.59%)	273 (2.27%)
Not Hispanic or Latino	9,621 (98.74%)	11,737 (97.97%)	11,981 (96.41%)	11,750 (97.73%)
Minority	257 (2.64%)	520 (4.34%)	879 (7.07%)	943 (7.84%)



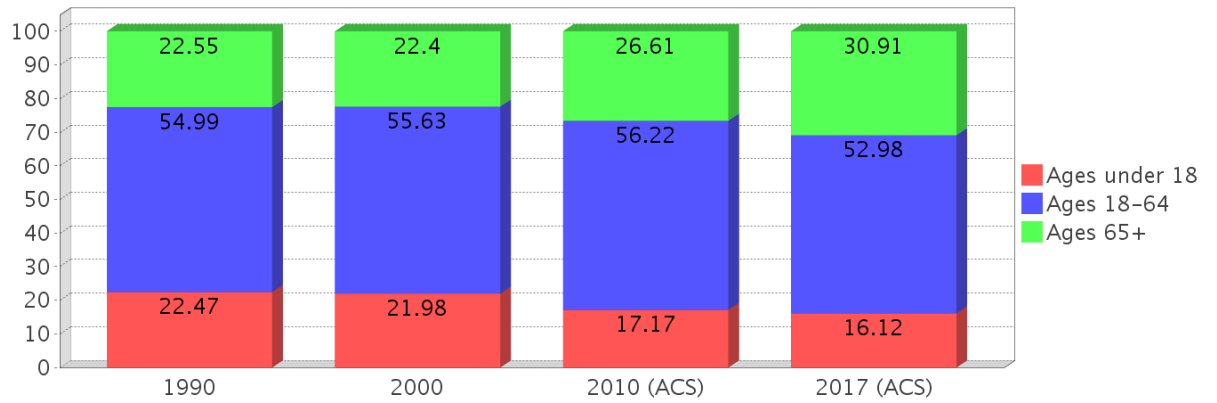
## Minority Percentage Population



### Age Trends

Description	1990	2000	2010 (ACS)	2017 (ACS)
Under Age 5	6.51%	5.25%	4.43%	3.68%
Ages 5-17	15.96%	16.73%	12.75%	12.44%
Ages 18-21	3.83%	3.93%	3.99%	4.52%
Ages 22-29	9.48%	6.97%	6.82%	6.27%
Ages 30-39	13.75%	12.57%	8.88%	9.27%
Ages 40-49	10.30%	13.55%	12.93%	11.62%
Ages 50-64	17.62%	18.61%	23.59%	21.30%
Age 65 and Over	22.55%	22.40%	26.61%	30.91%
-Ages 65-74	15.52%	12.71%	15.55%	19.32%
-Ages 75-84	6.21%	8.42%	8.69%	8.51%
-Age 85 and Over	0.82%	1.26%	2.37%	3.08%
Median Age	NA	46	52	55

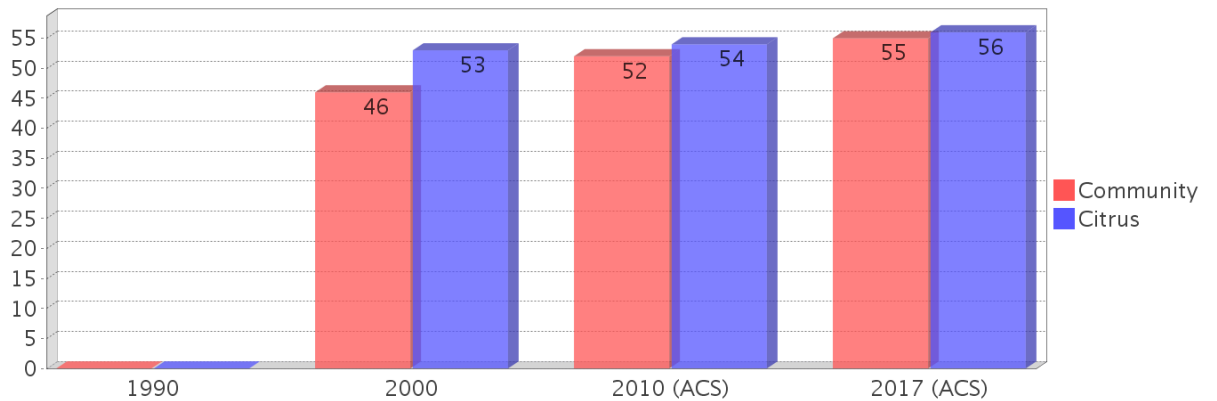
Percentage Population by Age Group



### Income Trends

Description	1990	2000	2010 (ACS)	2017 (ACS)
Median Household Income	\$17,841	\$27,164	\$30,676	\$34,781
Median Family Income	\$20,847	\$31,036	\$39,646	\$48,077
Population below Poverty Level	18.60%	13.53%	17.83%	20.74%
Households below Poverty Level	15.93%	14.33%	16.76%	20.40%
Households with Public Assistance Income	5.21%	2.66%	2.78%	3.87%

Median Age Comparison

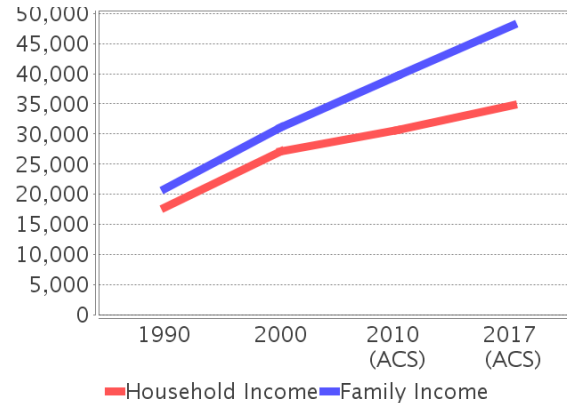


### Disability Trends

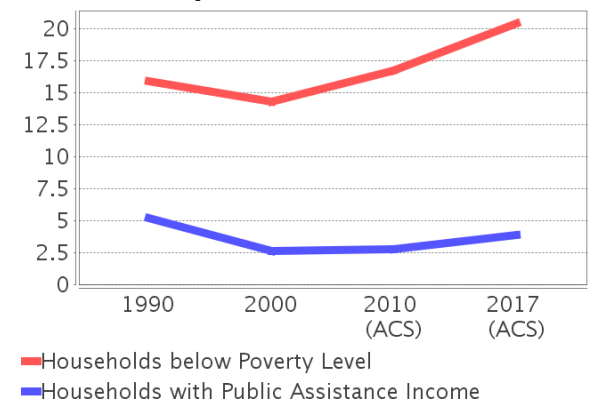
See the Data Sources section below for an explanation about the differences in disability data among the various years.

Description	1990	2000	2010 (ACS)	2017 (ACS)
Population 16 To 64 Years with a disability	760 (9.66%)	1837 (16.20%)	(NA)	(NA)
Population 20 To 64 Years with a disability	(NA)	(NA)	(NA)	1168 (19.05%)

Income Trends



Poverty and Public Assistance



## Educational Attainment Trends

Age 25 and Over

Description	1990	2000	2010 (ACS)	2017 (ACS)
Less than 9th Grade	807 (11.61%)	549 (6.36%)	624 (6.43%)	545 (5.86%)
9th to 12th Grade, No Diploma	1,830 (26.32%)	1,834 (21.24%)	1,583 (16.32%)	1,128 (12.12%)
High School Graduate or Higher	4,316 (62.07%)	6,250 (72.39%)	7,495 (77.25%)	7,634 (82.02%)
Bachelor's Degree or Higher	320 (4.60%)	552 (6.39%)	603 (6.22%)	826 (8.88%)

## Language Trends

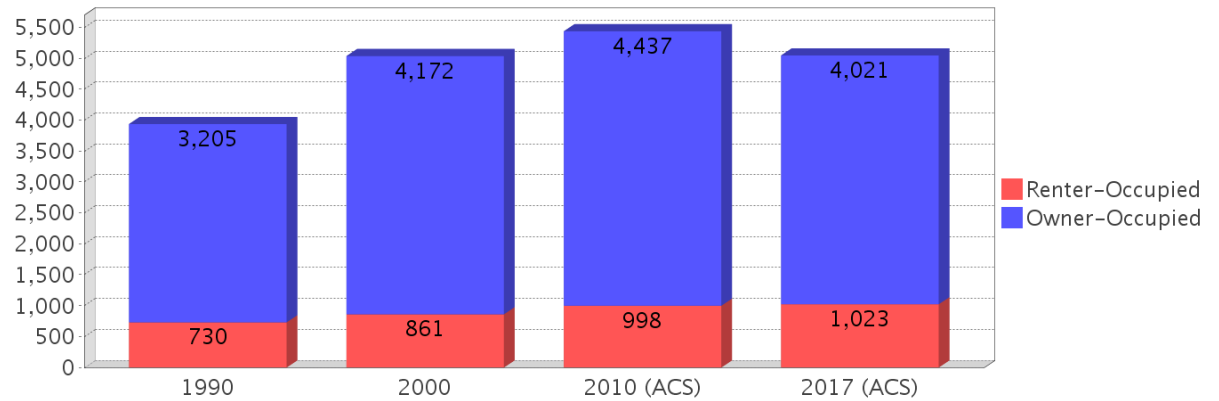
Age 5 and Over

Description	1990	2000	2010 (ACS)	2017 (ACS)
Speaks English Well	53 (0.58%)	112 (0.99%)	107 (0.87%)	147 (1.27%)
Speaks English Not Well	NA (NA)	43 (0.38%)	54 (0.44%)	26 (0.22%)
Speaks English Not at All	NA (NA)	1 (0.01%)	0 (0.00%)	0 (0.00%)
Speaks English Not Well or Not at All	18 (0.20%)	44 (0.39%)	54 (0.44%)	26 (0.22%)

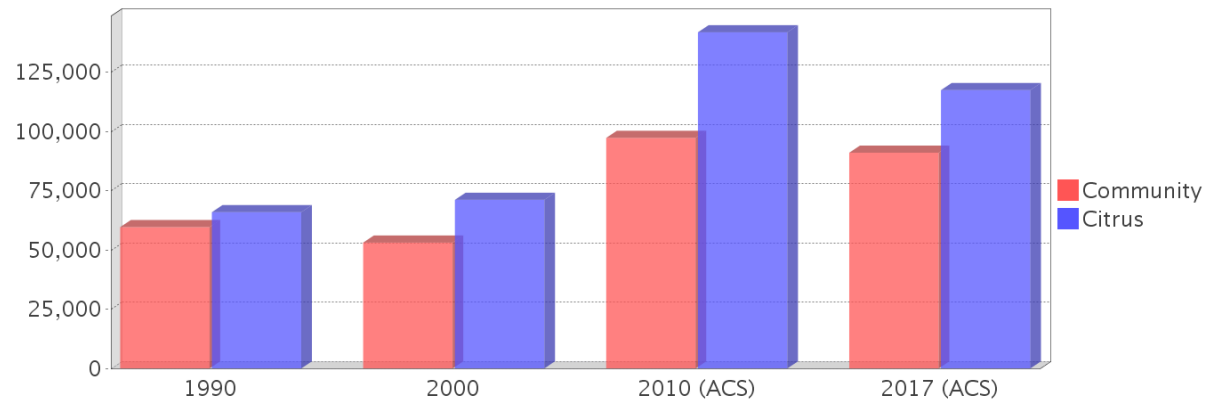
## Housing Trends

Description	1990	2000	2010 (ACS)	2017 (ACS)
Total	4,769	5,870	6,461	6,319
Units per Acre	0.31	0.38	0.41	0.40
Single-Family Units	1,505	2,446	2,302	2,598
Multi-Family Units	164	183	137	329
Mobile Home Units	2,255	3,241	3,928	3,393
Owner-Occupied Units	3,205	4,172	4,437	4,021
Renter-Occupied Units	730	861	998	1,023
Vacant Units	834	837	1,026	1,276
Median Housing Value	\$59,600	\$53,100	\$97,250	\$91,000
Occupied Housing Units w/No Vehicle	183 (4.65%)	180 (3.58%)	189 (3.48%)	334 (6.62%)

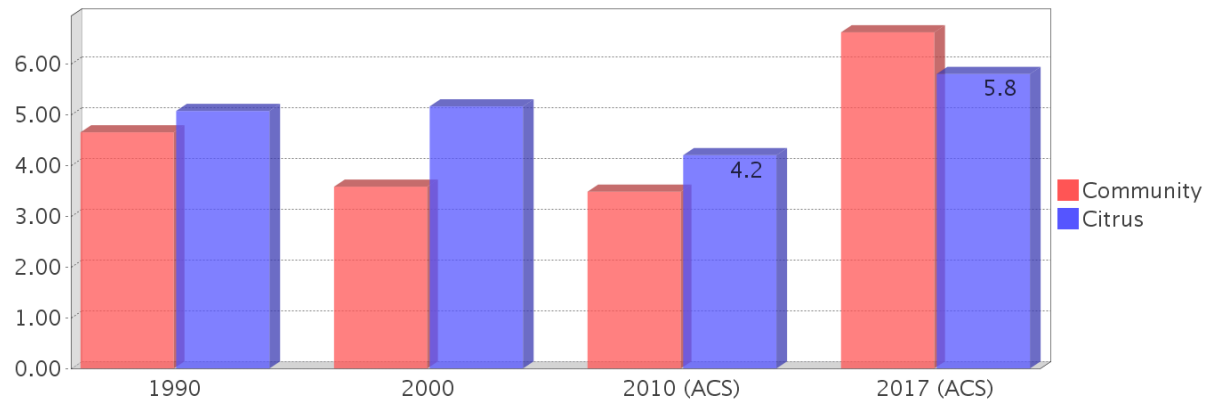
## Housing Tenure



## Median Housing Value Comparison

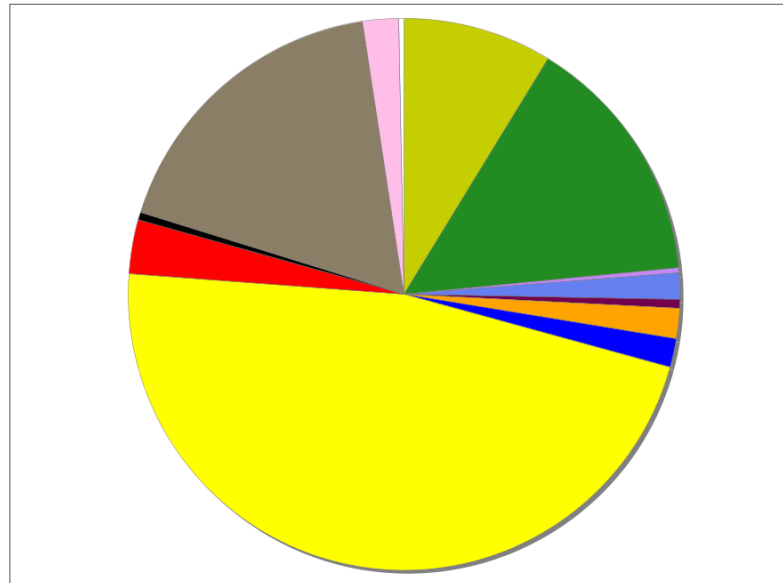


## Occupied Units With No Vehicles Available



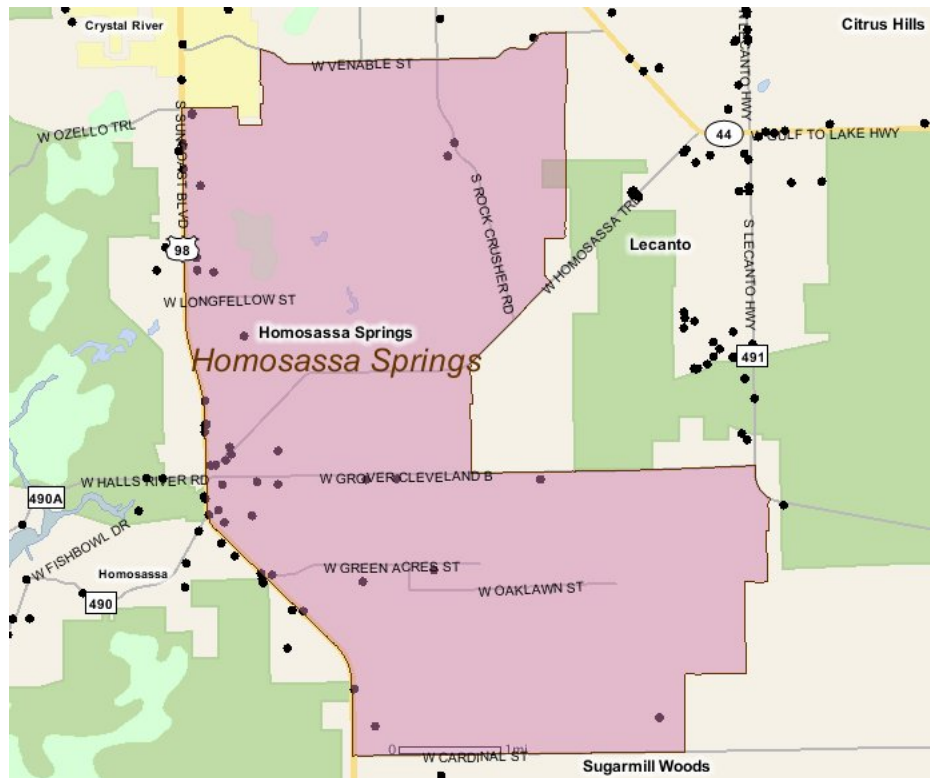
## Existing Land Use

Land Use Type	Acres	Percentage
Acreage Not Zoned For Agriculture	1,295	8.05%
Agricultural	2,183	13.56%
Centrally Assessed	0	0.00%
Industrial	41	0.25%
Institutional	228	1.42%
Mining	76	0.47%
Other	265	1.65%
Public/Semi-Public	245	1.52%
Recreation	4	0.02%
Residential	6,949	43.17%
Retail/Office	466	2.90%
Row	67	0.42%
Vacant Residential	2,637	16.38%
Vacant Nonresidential	313	1.94%
Water	0	0.00%
Parcels With No Values	43	0.27%



- Acreage Not Zoned For Agriculture
- Agricultural
- Centrally Assessed
- Industrial
- Institutional
- Mining
- Other
- Public/Semi-Public
- Recreation
- Residential
- Retail/Office
- Row
- Vacant Residential
- Vacant Nonresidential
- Water
- Parcels With No Values

## Location Maps



## Community Facilities

The community facilities information below is useful in a variety of ways for environmental evaluations. These community resources should be evaluated for potential sociocultural effects, such as accessibility and relocation potential. The facility types may indicate the types of population groups present in the project study area. Facility staff and leaders can be sources of community information such as who uses the facility and how it is used. Additionally, community facilities are potential public meeting venues.

### Assisted Housing (Points)

Facility Name	Address	Zip Code
HOMOSASSA LTD	4400 S. MARQUISPOINT	32646

### Community Centers (Points)

Facility Name	Address	Zip Code
WOMEN OF THE MOOSE CHAPTER 1434 - CRYSTAL RIVER	1855 S SUNCOAST BLVD	34448
MOOSE FAMILY CENTER 2013 - CRYSTAL RIVER	1855 S SUNCOAST BLVD	34448
BOYS & GIRLS CLUB - HOMOSASSA	8535 W GOODMAN LN	34448
ELKS LODGE 2693	7890 W GROVER CLEVELAND BLV	34446
MASONIC LODGE - SPRINGS 378 F & AM	5030 S MEMORIAL DR	34446
FRATERNAL ORDER OF EAGLES AERIE 4272	5340 W GROVER CLEVELAND BLVD	34446
KNIGHTS OF COLUMBUS 15225 - ST. BENEDICT	455 S SUNCOAST BLVD	34423
FRATERNAL ORDER OF EAGLES AERIE	3271 S SUNCOAST BLVD	34448
LIONS CLUB - HOMOSASSA	3705 S INDIANA TERR	34448

### Cultural Centers (Points)

Facility Name	Address	Zip Code
HOMOSASSA PUBLIC LIBRARY	4100 S GRANDMARCH AVE	34446

### Fire Stations (Points)

Facility Name	Address	Zip Code
CITRUS COUNTY FIRE DEPARTMENT AND RESCUE STATION 3 (HOMOSASSA)	8408 W HOMOSASSA TRAIL	34448

### Florida Parks and Recreational Facilities (Points)

Facility Name	Address	Zip Code
FIRE STATION PARK	8305 W HOMOSASSA TRL	34446
HOMOSASSA SPRINGS AREA RECREATION PARK	4210 S GRANDMARCH AVE	34446

### Healthcare Facilities (Geocoded)

Facility Name	Address	Zip Code
HARI V. IYER M.D.	3475 S SUNCOAST BOULEVARD	34448
FLORIDA FAMILY HEALTH MEDICAL CENTER, PLLC	5311 S SUNCOAST BOULEVARD	34446
JOSE A.D. CALLUENG M.D.	8468 W PERIWINKLE LANE, SUITE C	34446
H. CHRISTOPHER WARD, D.O.	8490 W HOMOSASSA TRAIL	34448
ANURADHA TATAMBHOTLA M.D. P.A.	4049 S OHIO AVENUE	34446
ADVANCED UROLOGY SPECIALISTS	3475 S SUNCOAST BOULEVARD	34448
PHYSICIANS INJURY MEDICAL CENTER	8546 HOMOSASSA TRAIL, SUITE 7	34446
WEST FLORIDA MEDICAL ASSOCIATES	4363 S SUNCOAST BOULEVARD	34446

### Mobile Home Parks in Florida

Facility Name	Address	Zip Code
COVERED WAGON CAMPGROUND	6049 S SUNCOAST BLVD	34446
STONEBROOK	8219 W CHARMAINE DR	34448

### Public and Private Schools (Points)

Facility Name	Address	Zip Code
THE CLUB UNSCHOOLERS	6408 S PINE MEADOW AVE	34446
ROCK CRUSHER ELEMENTARY SCHOOL	814 S ROCK CRUSHER ROAD	34448

## Religious Centers (Points)

Facility Name	Address	Zip Code
GRACE BIBLE CHURCH	6382 W GREEN ACRES STREET	34446
NEW HOPE BAPTIST CHURCH - SOLID ROCK BAPTIST CHURCH	8635 W GOODMAN LN	34448
FIRST CHRISTIAN CHURCH	7030 W GROVER CLEVELAND BOULEVARD	34446
CHURCH OF JESUS CHRIST	4041 S SKYLARK TER	34446
APOSTOLIC CHRISTIAN TABERNACLE	7961 WEST GREEN ACRES STREET	34446
KINGDOM HALL OF JEHOVAH'S WITNESSES - CRYSTAL RIVER CONGREGATION	1175 SOUTH SKYWAY AVENUE	34448
ST BENEDICT CATHOLIC CHURCH	455 S SUNCOAST BOULEVARD	34429
FIRST ASSEMBLY OF GOD	6430 S LEWDINGAR DRIVE	34446
SEVENTH-DAY ADVENTIST CHURCH	5863 W CARDINAL STREET	34446
CHURCH OF CHRIST OF HOMOSASSA SPRINGS	3750 SOUTH MISSOURI DRIVE	34448

## US Census Places

### Facility Name

Lecanto

Homosassa

Sugarmill Woods

Homosassa Springs

---

## Block Groups

The following Census Block Groups were used to calculate demographics for this report.

### 1990 Census Block Groups

120179817003, 120179806005, 120179817001, 120179817005, 120179816001, 120179815004, 120179806004, 120179815003, 120179806003, 120179815001, 120179815002, 120179805005

### 2000 Census Block Groups

120179816001, 120179806003, 120179806005, 120179806004, 120179816002, 120179817005, 120179815004, 120179815002, 120179814003, 120179805005, 120179817003, 120179815003, 120179817001, 120179815001, 120179806002

### 2010 Census Block Groups

120174517001, 120174516021, 120174506023, 120174515023, 120174515011, 120174516012, 120174506024, 120174514001, 120174506012, 120174515012, 120174515022, 120174506011, 120174517004, 120174506013, 120174506022, 120174505001, 120174515021

### 2017 Census Block Groups

120174515023, 120174506011, 120174506024, 120174506012, 120174516021, 120174515012, 120174516012, 120174505001, 120174506013, 120174515021, 120174514001, 120174515022, 120174515011, 120174506022, 120174506023, 120174517001, 120174517004

---

## Data Sources

### Area

The geographic area of the community based on a user-specified community boundary or area of interest (AOI) boundary.

### Jurisdiction

Jurisdiction(s) includes local government boundaries that intersect the community or AOI boundary.

### Demographic Data

Demographic data reported under the headings General Population Trends, Race and Ethnicity Trends, Age Trends, Income Trends, Educational Attainment Trends, Language Trends, and Housing Trends is from the U.S. Decennial Census (1990, 2000) and the American Community Survey (ACS) 5-year estimates from 2006-2010 and 2013-2017. The data was gathered at the block group level for user-specified community boundaries and AOIs, and at the county level for counties. Depending on the dataset, the data represents 100% counts (Census Summary File 1) or sample-based information (Census Summary File 3 or ACS).

### About the Census Data:

User-specified community boundaries and AOIs do not always correspond precisely to block group boundaries. In these instances, adjustment of the geographic area and data for affected block groups is required to estimate the actual population. To improve the accuracy of such estimates in the SDR report, the census block group data was adjusted to exclude all census blocks with a population of two or fewer. These areas were eliminated from the corresponding years' block groups. Next, the portion of the block group that lies outside of the community or AOI boundary was removed. The demographics within each block group were then recalculated, assuming an equal area distribution of the population. Note that there may be areas where there is no population.

Use caution when comparing the 100% count data (Decennial Census) to the sample-based data (ACS). In any given year, about one in 40 or 2.5% of U.S. households will receive the ACS questionnaire. Over any five-year period, about one in eight households will receive the questionnaire, as compared to about one in six that received the long form questionnaire for the Decennial Census 2000. (Source: <http://mcdc.missouri.edu/pub/data/acs/Readme.shtml>) The U.S. Census Bureau provides help with this process:

<https://www.census.gov/programs-surveys/acs/guidance/comparing-acs-data/2017.html>

Use caution when interpreting changes in Race and Ethnicity over time. Starting with the 2000 Decennial Census, respondents were given a new option of selecting one or more race categories. Also in 2000, the placement of the question about Hispanic origin changed, helping to increase responsiveness to the Hispanic-origin question. Because of these and other changes, the 1990 data on race and ethnicity are not directly comparable with data from later censuses.

(Source: <http://www.census.gov/prod/2001pubs/c2kbr01-1.pdf>;

<http://www.census.gov/pred/www/rpts/Race%20and%20Ethnicity%20FINAL%20report.pdf>)

The "Minority" calculations are derived from Census and ACS data using both the race and ethnicity responses. On this report, "Minority" refers to individuals who list a race other than White and/or list their ethnicity as Hispanic/Latino. In other words, people who are multi-racial, any single race other than White, or Hispanic/Latino of any race are considered minorities.

Disability data is not included in the 2010 Decennial Census, or the 2006-2010 ACS. This data is available in the 2013-2017 ACS.

Because of changes made to the Census and ACS questions between 1990 and 2017, disability variables should not be compared from year to year. For example: 1) With the 1990 data the disabilities are listed as a "work disability" while this distinction is not made with 2000 or 2017 ACS data; 2) The 2017 ACS data includes the institutionalized population (e.g. persons in prisons and group homes), while this population is not included in 1990 or 2000; 3) the age groupings changed over the years.

Please take the following two concerns into account when viewing this data: 1) With the 1990 data the disabilities are listed as a "work disability" while this distinction is not made with 2000 or 2017 ACS data; 2) The 2017 ACS data includes the institutionalized population (e.g. persons in prisons and group homes), while this population is not included in 1990 or 2000.

The category Bachelor's Degree or Higher under the heading Educational Attainment Trends is a subset of the category High School Graduate or Higher.

Income of households. This includes the income of the householder and all other individuals 15 years old and over in the household, whether they are related to the householder or not. Because many households consist of only one person, average household income is usually less than average family income.

Income of families. In compiling statistics on family income, the incomes of all members 15 years old and over related to the householder are summed and treated as a single amount.

Age Trends median age for 1990 is not available.

### **Land Use Data**

The Land Use information Indicates acreages and percentages for the generalized land use types used to group parcel-specific, existing land use assigned by the county property appraiser office according to the Florida Department of Revenue land use codes.

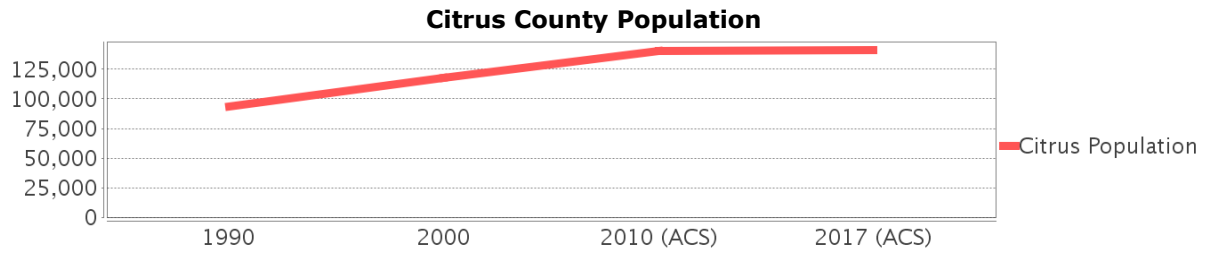
### **Community Facilities Data**

- Assisted Rental Housing Units - Identifies multifamily rental developments that receive funding assistance under federal, state, and local government programs to offer affordable housing as reported by the Shimberg Center for Housing Studies, University of Florida.
- Mobile Home Parks - Identifies approved or acknowledged mobile home parks reported by the Florida Department of Business and Professional Regulation and Florida Department of Health.
- Migrant Camps - Identifies migrant labor camp facilities inspected by the Florida Department of Health.
- Group Care Facilities - Identifies group care facilities inspected by the Florida Department of Health.
- Community Center and Fraternal Association Facilities - Identifies facilities reported by multiple sources.
- Law Enforcement Correctional Facilities - Identifies facilities reported by multiple sources.
- Cultural Centers - Identifies cultural centers including organizations, buildings, or complexes that promote culture and arts (e.g., aquariums and zoological facilities; arboreta and botanical gardens; dinner theaters; drive-ins; historical places and services; libraries; motion picture theaters; museums and art galleries; performing arts centers; performing arts theaters; planetariums; studios and art galleries; and theater producers stage facilities) reported by multiple sources.
- Fire Department and Rescue Station Facilities - Identifies facilities reported by multiple sources.
- Government Buildings - Identifies local, state, and federal government buildings reported by multiple sources.
- Health Care Facilities - Identifies health care facilities including abortion clinics, dialysis clinics, medical doctors, nursing homes, osteopaths, state laboratories/clinics, and surgicenters/walk-in clinics reported by the Florida Department of Health.
- Hospital Facilities - Identifies hospital facilities reported by multiple sources.
- Law Enforcement Facilities - Identifies law enforcement facilities reported by multiple sources.
- Parks and Recreational Facilities - Identifies parks and recreational facilities reported by multiple sources.
- Religious Center Facilities - Identifies religious centers including churches, temples, synagogues, mosques, chapels, centers, and other types of religious facilities reported by multiple sources.
- Private and Public Schools - Identifies private and public schools reported by multiple sources.
- Social Service Centers - Identifies social service centers reported by multiple sources.
- Veteran Organizations and Facilities

# Citrus County Demographic Profile

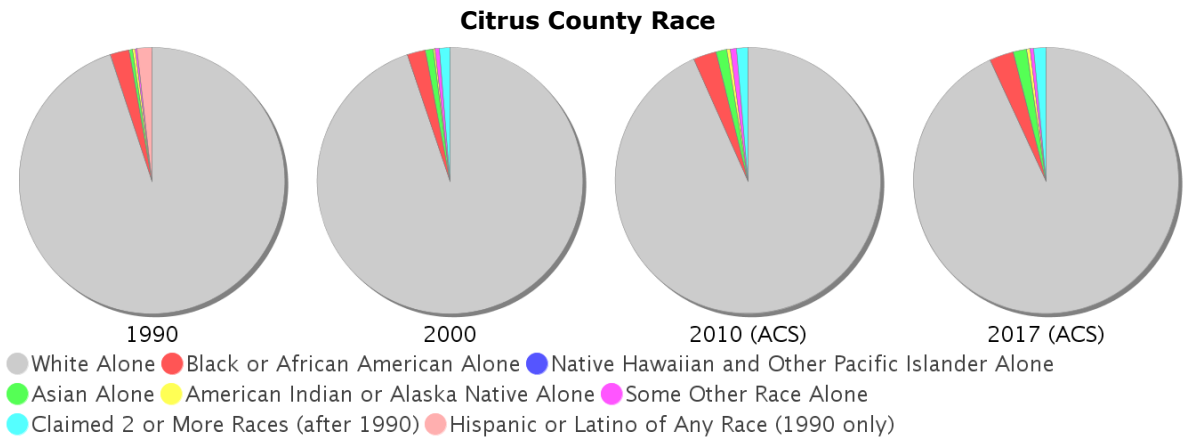
## General Population Trends - Citrus

Description	1990	2000	2010 (ACS)	2017 (ACS)
Total Population	93,515	118,085	140,686	141,373
Total Households	40,573	52,634	59,974	62,488
Average Persons per Acre	0.231	0.294	0.351	0.353
Average Persons per Household	2.305	2.201	2.00	2.22
Average Persons per Family	2.676	2.656	2.861	2.829
Males	44,711	56,661	68,183	68,487
Females	48,804	61,424	72,503	72,886



## Race and Ethnicity Trends - Citrus

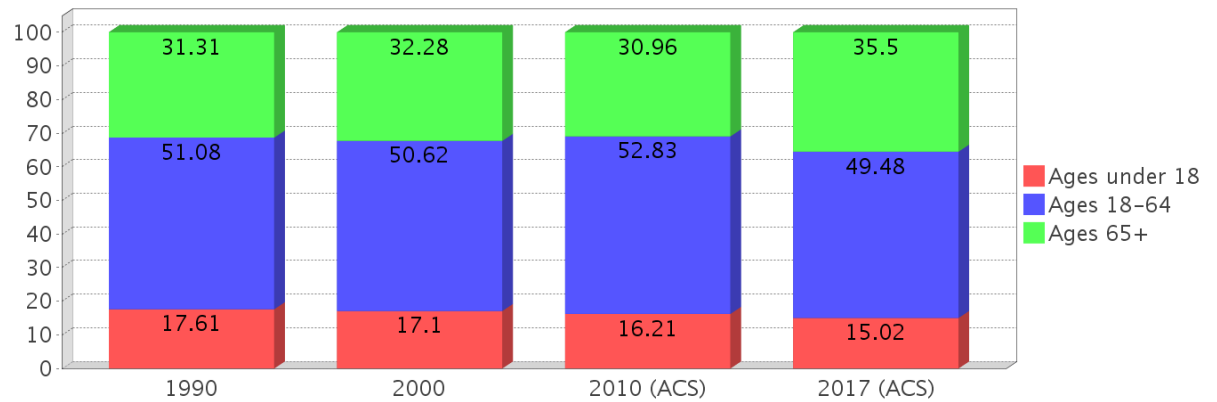
Description	1990	2000	2010 (ACS)	2017 (ACS)
White Alone	90,411 (96.68%)	111,930 (94.79%)	131,271 (93.31%)	131,599 (93.09%)
Black or African American Alone	2,206 (2.36%)	2,674 (2.26%)	3,942 (2.80%)	4,165 (2.95%)
Native Hawaiian and Other Pacific Islander Alone	(NA)	0 (0.00%)	33 (0.02%)	7 (0.00%)
Asian Alone	392 (0.42%)	1,145 (0.97%)	1,851 (1.32%)	2,354 (1.67%)
American Indian or Alaska Native Alone	283 (0.30%)	230 (0.19%)	606 (0.43%)	499 (0.35%)
Some Other Race Alone	220 (0.24%)	616 (0.52%)	1,026 (0.73%)	631 (0.45%)
Claimed 2 or More Races	(NA)	1,490 (1.26%)	1,957 (1.39%)	2,118 (1.50%)
Hispanic or Latino of Any Race	1,702 (1.82%)	3,058 (2.59%)	6,171 (4.39%)	7,528 (5.32%)
Not Hispanic or Latino	91,813 (98.18%)	115,027 (97.41%)	134,515 (95.61%)	133,845 (94.68%)
Minority	14,687 (15.71%)	8,394 (7.11%)	14,687 (10.44%)	16,085 (11.38%)



### Age Trends - Citrus

Description	1990	2000	2010 (ACS)	2017 (ACS)
Under Age 5	4.75%	3.76%	3.91%	3.85%
Ages 5-17	12.86%	13.34%	12.31%	11.17%
Ages 18-21	3.19%	3.01%	3.62%	3.42%
Ages 22-29	7.27%	4.92%	5.51%	6.25%
Ages 30-39	11.04%	9.99%	7.96%	7.80%
Ages 40-49	10.13%	11.81%	11.75%	9.34%
Ages 50-64	19.45%	20.90%	23.99%	22.68%
Age 65 and Over	31.31%	32.28%	30.96%	35.50%
-Ages 65-74	19.81%	17.34%	16.75%	19.46%
-Ages 75-84	9.53%	11.77%	10.51%	11.81%
-Age 85 and Over	1.98%	3.17%	3.70%	4.22%
Median Age	NA	53	54	56

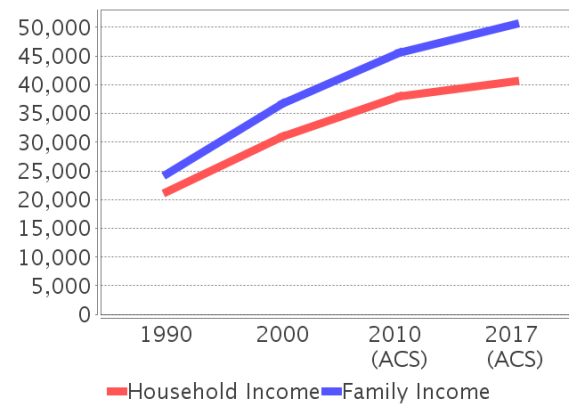
Percentage Population by Age Group - Citrus



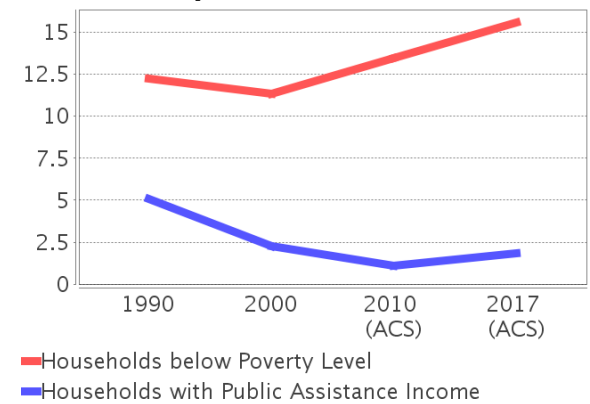
### Income Trends - Citrus

Description	1990	2000	2010 (ACS)	2017 (ACS)
Median Household Income	\$21,285	\$31,001	\$37,933	\$40,574
Median Family Income	\$24,465	\$36,711	\$45,568	\$50,551
Population below Poverty Level	12.56%	11.68%	14.42%	17.39%
Households below Poverty Level	12.22%	11.32%	13.43%	15.56%
Households with Public Assistance Income	5.10%	2.28%	1.12%	1.82%

Income Trends



Poverty and Public Assistance



### Disability Trends - Citrus

See the Data Sources section below for an explanation about the differences in disability data among the various years.

Description	1990	2000	2010 (ACS)	2017 (ACS)
Population 16 To 64 Years with a disability	6,769 (8.70%)	16,712 (14.92%)	NA (NA)	NA (NA)
Population 20 To 64 Years with a disability	NA (NA)	NA (NA)	NA (NA)	11,326 (17.00%)

## Educational Attainment Trends - Citrus

Age 25 and Over

Description	1990	2000	2010 (ACS)	2017 (ACS)
Less than 9th Grade	7,219 (10.02%)	5,003 (5.40%)	4,751 (4.32%)	3,650 (3.26%)
9th to 12th Grade, No Diploma	15,427 (21.41%)	15,075 (16.28%)	11,708 (10.64%)	10,496 (9.37%)
High School Graduate or Higher	49,408 (68.57%)	72,516 (78.32%)	93,582 (85.04%)	97,887 (87.37%)
Bachelor's Degree or Higher	7,480 (10.38%)	12,177 (13.15%)	18,177 (16.52%)	19,994 (17.85%)

## Language Trends - Citrus

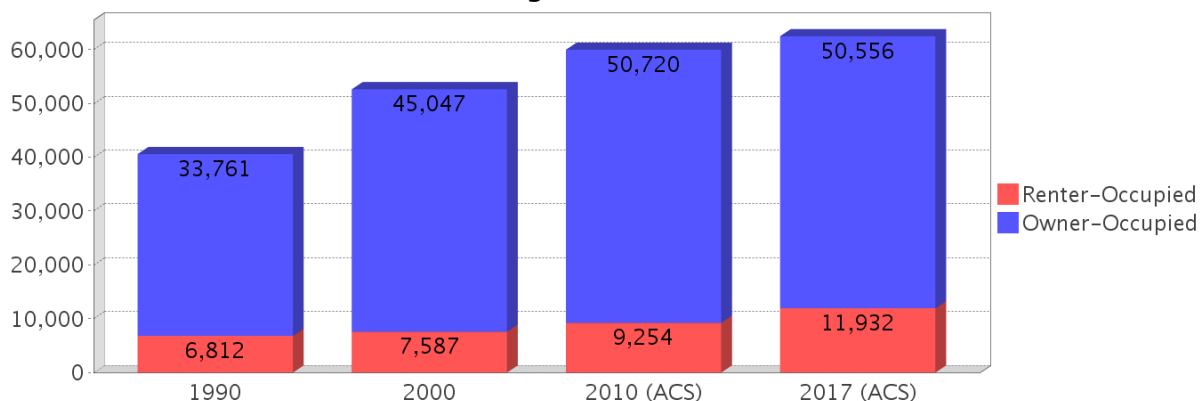
Age 5 and Over

Description	1990	2000	2010 (ACS)	2017 (ACS)
Speaks English Well	1,166 (1.31%)	1,712 (1.51%)	1,475 (1.09%)	1,618 (1.19%)
Speaks English Not Well	NA (NA)	794 (0.70%)	718 (0.53%)	772 (0.57%)
Speaks English Not at All	NA (NA)	184 (0.16%)	235 (0.17%)	457 (0.34%)
Speaks English Not Well or Not at All	577 (0.65%)	978 (0.86%)	953 (0.70%)	1,229 (0.90%)

## Housing Trends - Citrus

Description	1990	2000	2010 (ACS)	2017 (ACS)
Total	49,854	62,204	76,813	78,825
Units per Acre	0.123	0.155	0.192	0.197
Single-Family Units	26,581	41,314	51,857	55,727
Multi-Family Units	2,103	3,542	4,111	4,844
Mobile Home Units	11,752	17,212	20,704	18,152
Owner-Occupied Units	33,761	45,047	50,720	50,556
Renter-Occupied Units	6,812	7,587	9,254	11,932
Vacant Units	9,281	9,570	16,839	16,337
Median Housing Value	\$65,900	\$71,100	\$141,800	\$117,400
Occupied Housing Units w/No Vehicle	2,058 (5.07%)	2,717 (5.16%)	2,520 (4.20%)	3,623 (5.80%)

## Housing Tenure - Citrus



---

## County Data Sources

Demographic data reported is from the U.S. Decennial Census (1990, 2000) and the American Community Survey (ACS) 5-year estimates from 2006-2010 and 2013-2017. The data was gathered at the county level. Depending on the dataset, the data represents 100% counts (Census Summary File 1) or sample-based information (Census Summary File 3 or ACS).

### About the Census Data:

Use caution when comparing the 100% count data (Decennial Census) to the sample-based data (ACS). In any given year, about one in 40 or 2.5% of U.S. households will receive the ACS questionnaire. Over any five-year period, about one in eight households will receive the questionnaire, as compared to about one in six that received the long form questionnaire for the Decennial Census 2000. (Source: <http://mcdc.missouri.edu/pub/data/acs/Readme.shtml>) The U.S. Census Bureau provides help with this process:

<https://www.census.gov/programs-surveys/acs/guidance/comparing-acs-data/2017.html>

Use caution when interpreting changes in Race and Ethnicity over time. Starting with the 2000 Decennial Census, respondents were given a new option of selecting one or more race categories. Also in 2000, the placement of the question about Hispanic origin changed, helping to increase responsiveness to the Hispanic-origin question. Because of these and other changes, the 1990 data on race and ethnicity are not directly comparable with data from later censuses. (Source: <http://www.census.gov/prod/2001pubs/c2kbr01-1.pdf>;  
<http://www.census.gov/pred/www/rpts/Race%20and%20Ethnicity%20FINAL%20report.pdf>)

The "Minority" calculations are derived from Census and ACS data using both the race and ethnicity responses. On this report, "Minority" refers to individuals who list a race other than White and/or list their ethnicity as Hispanic/Latino. In other words, people who are multi-racial, any single race other than White, or Hispanic/Latino of any race are considered minorities.

Disability data is not included in the 2010 Decennial Census, or the 2006-2010 ACS. This data is available in the 2013-2017 ACS.

Because of changes made to the Census and ACS questions between 1990 and 2017, disability variables should not be compared from year to year. For example: 1) With the 1990 data the disabilities are listed as a "work disability" while this distinction is not made with 2000 or 2017 ACS data; 2) The 2017 ACS data includes the institutionalized population (e.g. persons in prisons and group homes), while this population is not included in 1990 or 2000; 3) the age groupings changed over the years.

Please take the following two concerns into account when viewing this data: 1) With the 1990 data the disabilities are listed as a "work disability" while this distinction is not made with 2000 or 2017 ACS data; 2) The 2017 ACS data includes the institutionalized population (e.g. persons in prisons and group homes), while this population is not included in 1990 or 2000.

source:

<https://www.census.gov/people/disability/methodology/acs.html>

<https://www.census.gov/population/www/cen2000/90vs00/index.html>

The category Bachelor's Degree or Higher under the heading Educational Attainment Trends is a subset of the category High School Graduate or Higher.

---

## Metadata

- Community and Fraternal Centers [https://etdmpub.florida-etat.org/metadata/gc\\_communitycenter.htm](https://etdmpub.florida-etat.org/metadata/gc_communitycenter.htm)
- Correctional Facilities in Florida [https://etdmpub.florida-etat.org/metadata/gc\\_correctional.htm](https://etdmpub.florida-etat.org/metadata/gc_correctional.htm)
- Cultural Centers in Florida [https://etdmpub.florida-etat.org/metadata/gc\\_culturecenter.htm](https://etdmpub.florida-etat.org/metadata/gc_culturecenter.htm)
- Fire Department and Rescue Station Facilities in Florida [https://etdmpub.florida-etat.org/metadata/gc\\_firestat.htm](https://etdmpub.florida-etat.org/metadata/gc_firestat.htm)
- Local, State, and Federal Government Buildings in Florida [https://etdmpub.florida-etat.org/metadata/gc\\_govbuild.htm](https://etdmpub.florida-etat.org/metadata/gc_govbuild.htm)
- Florida Health Care Facilities [https://etdmpub.florida-etat.org/metadata/gc\\_health.htm](https://etdmpub.florida-etat.org/metadata/gc_health.htm)
- Hospital Facilities in Florida [https://etdmpub.florida-etat.org/metadata/gc\\_hospitals.htm](https://etdmpub.florida-etat.org/metadata/gc_hospitals.htm)
- Law Enforcement Facilities in Florida [https://etdmpub.florida-etat.org/metadata/gc\\_lawenforce.htm](https://etdmpub.florida-etat.org/metadata/gc_lawenforce.htm)
- Florida Parks and Recreational Facilities [https://etdmpub.florida-etat.org/metadata/gc\\_parks.htm](https://etdmpub.florida-etat.org/metadata/gc_parks.htm)
- Religious Centers [https://etdmpub.florida-etat.org/metadata/gc\\_religion.htm](https://etdmpub.florida-etat.org/metadata/gc_religion.htm)
- Florida Public and Private Schools [https://etdmpub.florida-etat.org/metadata/gc\\_schools.htm](https://etdmpub.florida-etat.org/metadata/gc_schools.htm)
- Social Service Centers [https://etdmpub.florida-etat.org/metadata/gc\\_socialservice.htm](https://etdmpub.florida-etat.org/metadata/gc_socialservice.htm)
- Assisted Rental Housing Units in Florida [https://etdmpub.florida-etat.org/metadata/gc\\_assisted\\_housing.htm](https://etdmpub.florida-etat.org/metadata/gc_assisted_housing.htm)
- Group Care Facilities <https://etdmpub.florida-etat.org/metadata/groupcare.htm>
- Mobile Home Parks in Florida [https://etdmpub.florida-etat.org/metadata/gc\\_mobilehomes.htm](https://etdmpub.florida-etat.org/metadata/gc_mobilehomes.htm)
- Migrant Camps in Florida <https://etdmpub.florida-etat.org/metadata/migrant.htm>
- Veteran Organizations and Facilities [https://etdmpub.florida-etat.org/metadata/gc\\_veterans.htm](https://etdmpub.florida-etat.org/metadata/gc_veterans.htm)
- Generalized Land Use - Florida DOT District 7 [https://etdmpub.florida-etat.org/metadata/d7\\_lu\\_gen.htm](https://etdmpub.florida-etat.org/metadata/d7_lu_gen.htm)
- Census Block Groups in Florida [https://etdmpub.florida-etat.org/metadata/e2\\_cenacs\\_cci.htm](https://etdmpub.florida-etat.org/metadata/e2_cenacs_cci.htm)
- 1990 Census Block Groups in Florida [https://etdmpub.florida-etat.org/metadata/e2\\_cenblkgrp\\_1990\\_cci.htm](https://etdmpub.florida-etat.org/metadata/e2_cenblkgrp_1990_cci.htm)
- 2000 Census Block Groups in Florida [https://etdmpub.florida-etat.org/metadata/e2\\_cenblkgrp\\_2000\\_cci.htm](https://etdmpub.florida-etat.org/metadata/e2_cenblkgrp_2000_cci.htm)
- 2010 Census Block Groups in Florida [https://etdmpub.florida-etat.org/metadata/e2\\_cenblkgrp\\_2010\\_cci.htm](https://etdmpub.florida-etat.org/metadata/e2_cenblkgrp_2010_cci.htm)