

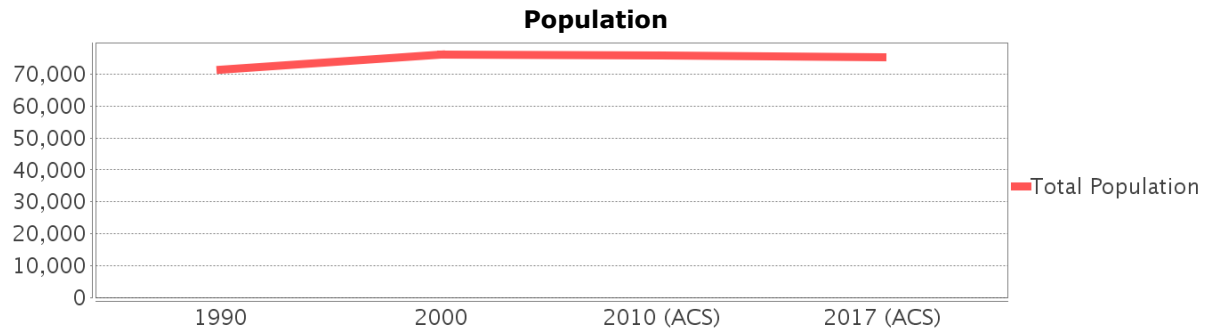
Sociocultural Data Report

Kendall

Area: 16.595 square miles
Jurisdiction(s): Cities: NA
 Counties: Miami-dade

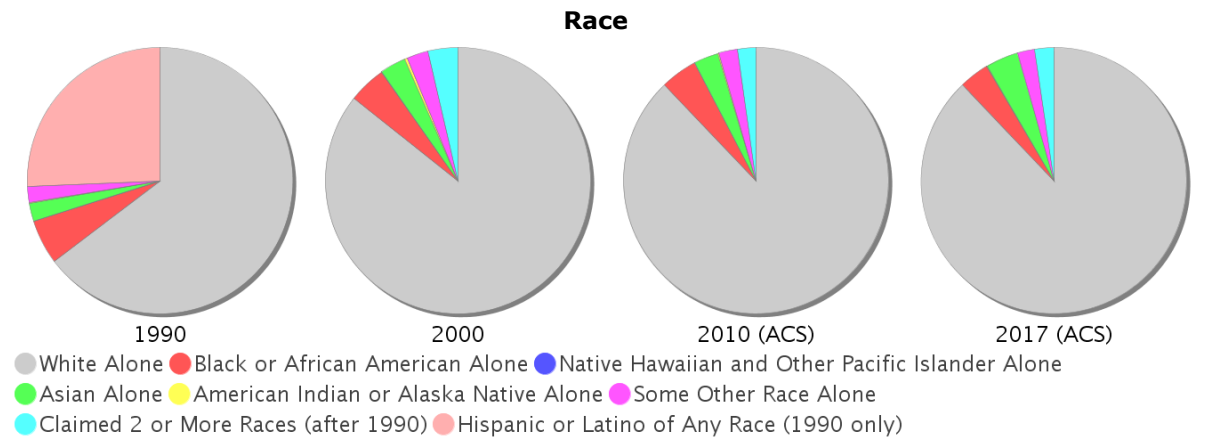
General Population Trends

Description	1990	2000	2010 (ACS)	2017 (ACS)
Total Population	71,419	76,091	75,841	75,426
Total Households	27,290	28,700	29,282	27,388
Average Persons per Acre	7.36	8.49	12.47	12.54
Average Persons per Household	2.78	2.88	2.68	2.86
Average Persons per Family	3.25	3.34	3.01	3.49
Males	33,995	35,607	35,200	36,196
Females	37,423	40,484	40,641	39,231

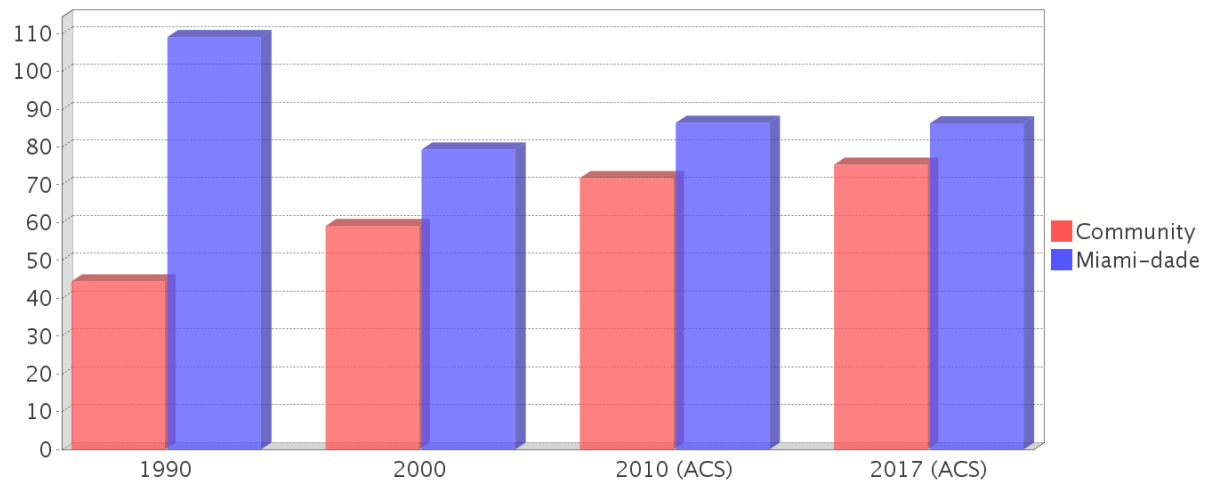


Race and Ethnicity Trends

Description	1990	2000	2010 (ACS)	2017 (ACS)
White Alone	62,121 (86.98%)	65,160 (85.63%)	66,623 (87.85%)	66,284 (87.88%)
Black or African American Alone	5,221 (7.31%)	3,490 (4.59%)	3,385 (4.46%)	2,781 (3.69%)
Native Hawaiian and Other Pacific Islander Alone	22 (0.03%)	25 (0.03%)	28 (0.04%)	3 (0.00%)
Asian Alone	2,094 (2.93%)	2,394 (3.15%)	2,262 (2.98%)	2,986 (3.96%)
American Indian or Alaska Native Alone	77 (0.11%)	242 (0.32%)	106 (0.14%)	0 (0.00%)
Some Other Race Alone	1,885 (2.64%)	2,028 (2.67%)	1,750 (2.31%)	1,598 (2.12%)
Claimed 2 or More Races	NA (NA)	2,752 (3.62%)	1,686 (2.22%)	1,774 (2.35%)
Hispanic or Latino of Any Race	24,675 (34.55%)	38,231 (50.24%)	48,442 (63.87%)	50,566 (67.04%)
Not Hispanic or Latino	46,744 (65.45%)	37,860 (49.76%)	27,399 (36.13%)	24,860 (32.96%)
Minority	31,722 (44.42%)	44,977 (59.11%)	54,428 (71.77%)	56,807 (75.31%)



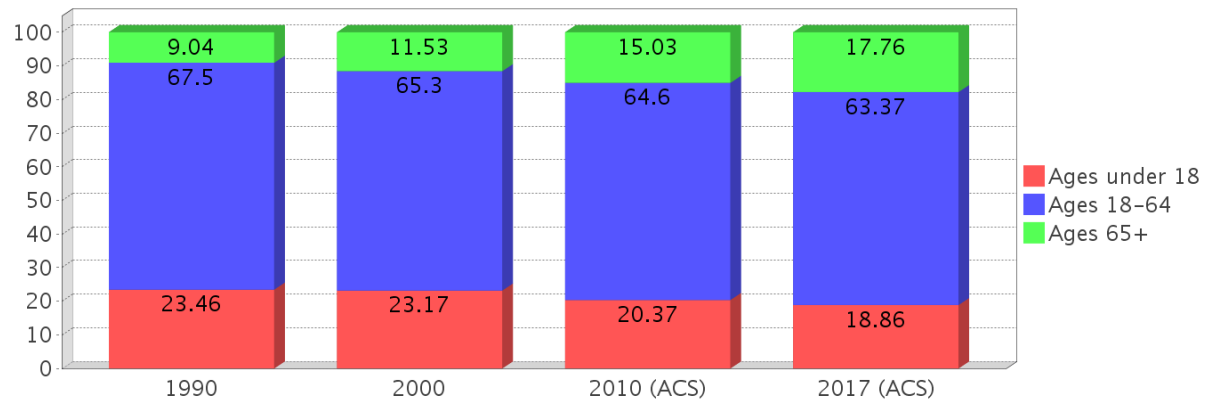
Minority Percentage Population



Age Trends

Description	1990	2000	2010 (ACS)	2017 (ACS)
Under Age 5	6.80%	5.87%	5.01%	4.53%
Ages 5-17	16.67%	17.30%	15.36%	14.33%
Ages 18-21	5.63%	4.65%	4.96%	4.69%
Ages 22-29	14.49%	10.84%	10.74%	10.59%
Ages 30-39	18.75%	16.33%	12.77%	13.12%
Ages 40-49	16.00%	16.65%	15.51%	13.72%
Ages 50-64	12.63%	16.82%	20.61%	21.24%
Age 65 and Over	9.04%	11.53%	15.03%	17.76%
-Ages 65-74	5.25%	6.39%	8.05%	9.37%
-Ages 75-84	2.80%	3.75%	4.85%	5.53%
-Age 85 and Over	0.99%	1.39%	2.12%	2.86%
Median Age	NA	37	42	42

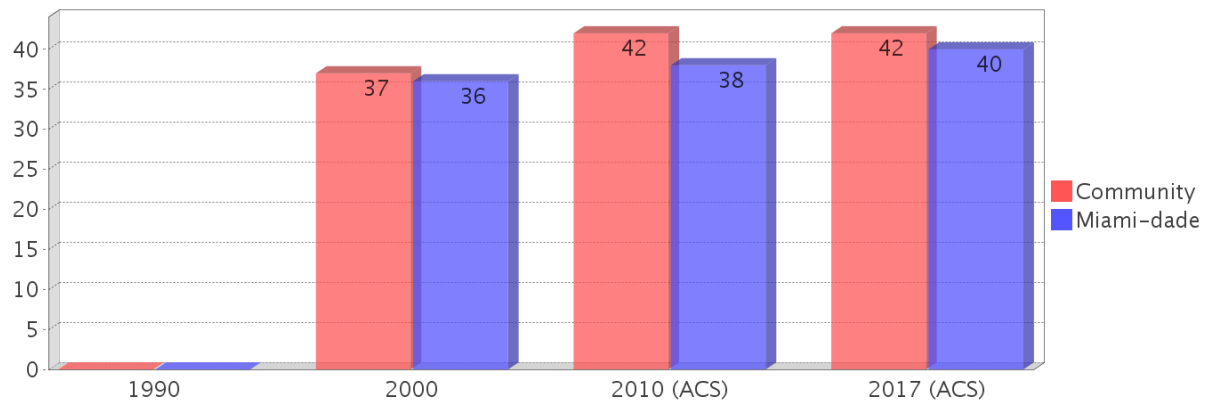
Percentage Population by Age Group



Income Trends

Description	1990	2000	2010 (ACS)	2017 (ACS)
Median Household Income	\$44,060	\$61,071	\$69,583	\$71,026
Median Family Income	\$50,866	\$68,250	\$79,327	\$76,438
Population below Poverty Level	7.49%	8.60%	9.08%	8.25%
Households below Poverty Level	7.54%	8.95%	8.47%	8.92%
Households with Public Assistance Income	3.03%	1.64%	0.75%	1.35%

Median Age Comparison

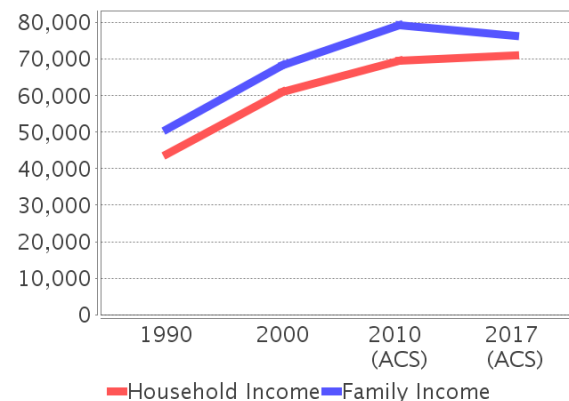


Disability Trends

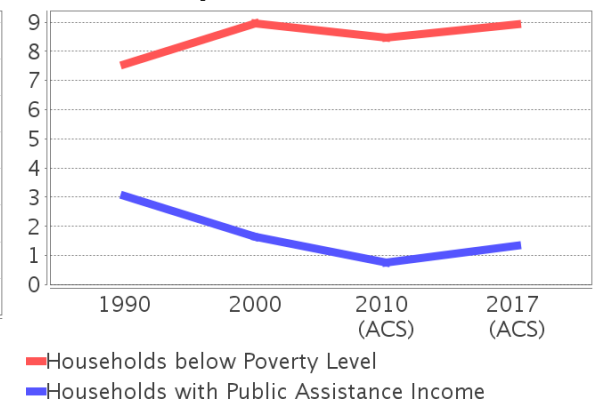
See the Data Sources section below for an explanation about the differences in disability data among the various years.

Description	1990	2000	2010 (ACS)	2017 (ACS)
Population 16 To 64 Years with a disability	1960 (3.51%)	7907 (11.11%)	(NA)	(NA)
Population 20 To 64 Years with a disability	(NA)	(NA)	(NA)	2231 (4.82%)

Income Trends



Poverty and Public Assistance



Educational Attainment Trends

Age 25 and Over

Description	1990	2000	2010 (ACS)	2017 (ACS)
Less than 9th Grade	1,924 (4.07%)	2,326 (4.47%)	2,679 (5.02%)	2,246 (4.09%)
9th to 12th Grade, No Diploma	3,169 (6.70%)	3,676 (7.06%)	3,435 (6.43%)	2,241 (4.08%)
High School Graduate or Higher	42,180 (89.23%)	46,058 (88.47%)	47,301 (88.55%)	50,476 (91.84%)
Bachelor's Degree or Higher	18,616 (39.38%)	21,071 (40.48%)	22,051 (41.28%)	24,552 (44.67%)

Language Trends

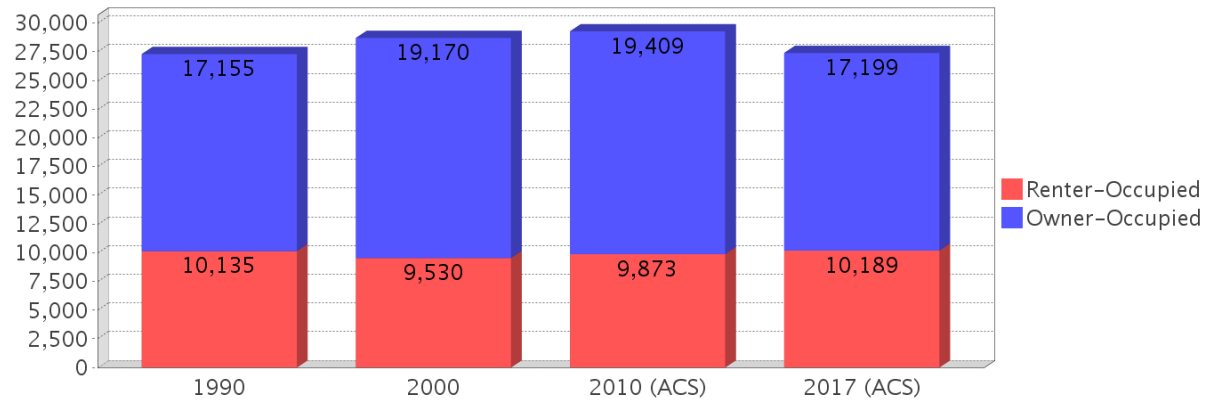
Age 5 and Over

Description	1990	2000	2010 (ACS)	2017 (ACS)
Speaks English Well	6,056 (9.15%)	8,602 (12.01%)	8,940 (12.27%)	9,875 (13.71%)
Speaks English Not Well	NA (NA)	5,233 (7.31%)	6,614 (9.08%)	6,207 (8.62%)
Speaks English Not at All	NA (NA)	2,218 (3.10%)	2,484 (3.41%)	1,799 (2.50%)
Speaks English Not Well or Not at All	4,439 (6.71%)	7,451 (10.40%)	9,098 (12.49%)	8,006 (11.12%)

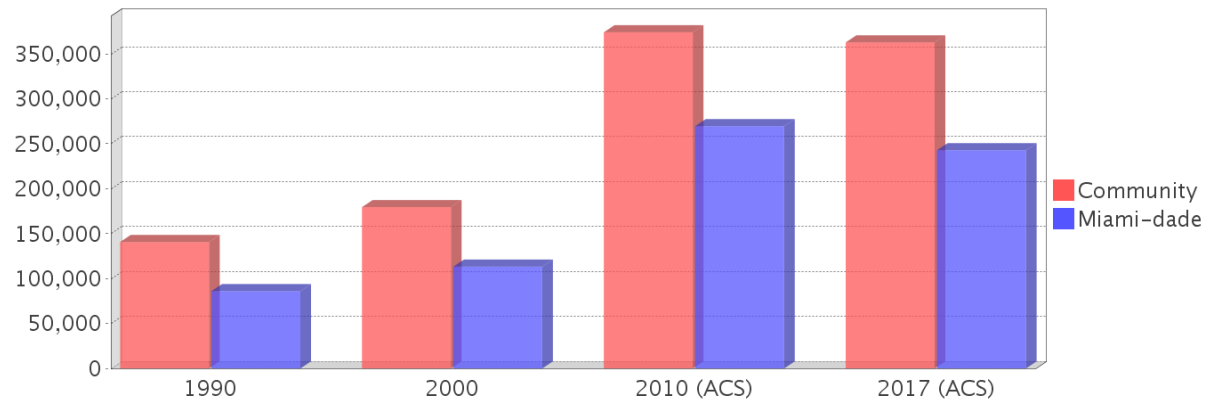
Housing Trends

Description	1990	2000	2010 (ACS)	2017 (ACS)
Total	29,346	29,887	32,076	30,737
Units per Acre	3.09	3.15	3.57	3.42
Single-Family Units	16,382	17,743	18,227	17,214
Multi-Family Units	10,644	12,105	12,469	13,341
Mobile Home Units	9	38	31	147
Owner-Occupied Units	17,155	19,170	19,409	17,199
Renter-Occupied Units	10,135	9,530	9,873	10,189
Vacant Units	2,055	1,187	2,794	3,349
Median Housing Value	\$140,700	\$179,500	\$374,100	\$362,850
Occupied Housing Units w/No Vehicle	1,257 (4.61%)	1,969 (6.86%)	1,493 (5.10%)	1,253 (4.57%)

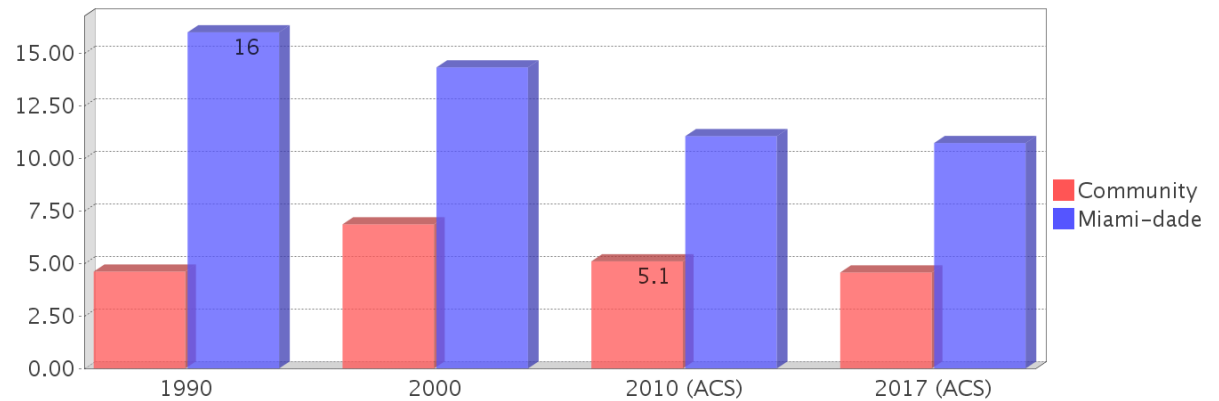
Housing Tenure



Median Housing Value Comparison



Occupied Units With No Vehicles Available



Community Facilities

The community facilities information below is useful in a variety of ways for environmental evaluations. These community resources should be evaluated for potential sociocultural effects, such as accessibility and relocation potential. The facility types may indicate the types of population groups present in the project study area. Facility staff and leaders can be sources of community information such as who uses the facility and how it is used. Additionally, community facilities are potential public meeting venues.

Assisted Housing (Points)

Facility Name	Address	Zip Code
COLLEGE PARK TOWERS	10700 SW 109TH CT	33176
FEDERATION GARDENS I	10905 SW 112TH AVE	33176
FEDERATION GARDENS II	10911 SW 112TH AVE	33176

Community Centers (Points)

Facility Name	Address	Zip Code
MOOSE FAMILY CENTER 1825 - WEST DADE	9900 SW 77TH AVE	33156
DAVE & MARY ALPER JEWISH COMMUNITY CENTER & B'NAI B'RITH YOUTH CENTER	11155 SW 112TH AVE	33176
YMCA - GREATER MIAMI	9355 SW 134TH ST	33176
KNIGHTS OF COLUMBUS 12429 - SANTA CATALINA DE SIENA	9200 SW 107TH AVE	33176
KNIGHTS OF COLUMBUS 13369 - MONSIGNOR BRYAN O WALSH	12125 SW 107TH AVE	33176
BOYS & GIRLS CLUB - MIAMI	9475 N KENDALL DR	33176
ASSOCIATION FOR RETARDED CITIZENS (ARC) - MIAMI-DADE COUNTY	11025 SW 84TH ST	33173

Correctional Facilities (Points)

Facility Name	Address	Zip Code
MIAMI SUBSTANCE ABUSE TREATMENT CENTER/MIAMI YOUTH ACADEMY	10855 SW 84TH ST	33173

Cultural Centers (Points)

Facility Name	Address	Zip Code
MIAMI DADE COLLEGE - KENDALL CAMPUS LIBRARY	11011 SW 104TH ST	33176
CORAL REEF BRANCH LIBRARY	9211 CORAL REEF DR	33157
SUNSET BRANCH LIBRARY	10855 SW 72ND ST	33173
AMBROSIO MARTIN ART GALLERY OF OLD CUBA	10411 SW 116 ST	33176
CITY COLLEGE-MIAMI LIBRARY	9350 S DADELAND BLVD	33156
MIAMI CHILDRENS THEATRE-DAVE AND MARY ALPER JCC	11155 SW 112TH AVE	33176
SPECIAL EVENTS	8888 SW 136TH ST	33176
BAPTIST HEALTH SOUTH FLORIDA - JAFFEE MEDICAL LIBRARY	8900 N KENDALL DR	33176
KENDALL BRANCH LIBRARY	9101 SW 97TH AVE	33176
MIAMI DADE COLLEGE KENDALL CAMPUS ART GALLERY	11011 SW 104TH ST	33176

Fire Stations (Points)

Facility Name	Address	Zip Code
MIAMI-DADE COUNTY FIRE DEPARTMENT AND RESCUE STATION 4 (CORAL REEF)	9201 SW 152ND ST	33157
MIAMI-DADE COUNTY FIRE DEPARTMENT AND RESCUE STATION 23 (SUNILAND/PINECREST)	7825 SW 104TH ST	33156
BAPTIST AIR TRANSPORT	8900 N KENDALL DR	33176
MIAMI-DADE COUNTY FIRE DEPARTMENT AND RESCUE STATION 9 (KENDALL)	7777 SW 117TH AVE	33183

Florida Parks and Recreational Facilities (Points)

Facility Name	Address	Zip Code
BRIAR BAY LINEAR PARK	9275 SW 136TH ST	33176

Facility Name	Address	Zip Code
SNAPPER CREEK CANAL (C-2) BOAT RAMP AT SW 97TH AVENUE	NORTH SNAPPER CREEK DRIVE & SW 97TH COURT	33173
KENDALL INDIAN HAMMOCKS PARK	8000 SW 107 AVE	33173
SABAL CHASE PARK	10940 SW 113TH PL	33176
MIAMI-DADE COUNTY PARK - AREA 313	10350 SW 132ND ST	33176
BOYS AND GIRLS CLUB OF MIAMI- KENDALL UNIT	9475 SW 88TH ST	33173
BRIAR BAY GOLF COURSE	12855 SW 94 PL	33176
BRIAR BAY PARK	9000 SW 128TH ST	33176
ROCK RIDGE PARK	10810 SW 117TH AVE	33186
MIAMI-DADE COUNTY PARK - AREA 47	13210 SW 105TH AVE	33176
MIAMI-DADE COUNTY PARK - AREA 312	10420 SW 132ND ST	33176
SNAPPER CREEK PARK	10280 SW 80TH ST	33173
MIAMI-DADE COUNTY PARK - AREA 318	9900 SW 128TH ST	33176
SOUTH DADE TRAIL MINI PARK	7975 SW 112TH ST	33156
ROCKDALE PARK	9325 SW 146TH ST	33176
CUTLER DRAIN CANAL BOAT RAMP	SW 92ND AVE	33176
CUTLER DRAIN CANAL BOAT RAMP	SW 92ND AVE	33176
KENDALE PARK	9250 KENDALE BLVD	33176
KILLIAN LIBRARY PARK	1161 SW 87TH CT	33176
CONTINENTAL PARK	1000 SW 82ND AVE	33156
ROCKLAND PINELAND PRESERVE	SW 144TH ST & SW 92ND AVE	33176
PINEWOODS PARK	13181 SW 102ND AVE	33176
MIAMI-DADE COUNTY PARK - AREA 316	9905 SW 120TH ST	33176
CHERRY GROVE PARK	9101 SW 97TH AVE	33176
RON EHMANN PARK	10995 SW 97TH AVE	33176
MIAMI-DADE COUNTY PARK - AREA 338	13211 SW 105TH AVE	33176

Government Building

Facility Name	Address	Zip Code
U S POST OFFICE - TOWN & COUNTRY POSTAL STORE	8266 MILLS DR	33283
U S POST OFFICE - SUNSET	7501 SW 117TH AVE	33183
U S POST OFFICE - SNAPPER CREEK	11000 SW 104TH ST	33176

Healthcare Facilities (Geocoded)

Facility Name	Address	Zip Code
FLORIDA PAIN TREATMENT CENTER	11780 SW 89 STREET, FLOOR 3	33186
MONSERRAT BUIA M.D. P.A	11801 SW 90 STREET, SUITE 105	33186
SARNOW D.O. MELVYN	11120 SW 88 STREET, SUITE 100	33176
AESTHOR E. BOMBINO M.D P.A	10651 N KENDALL DRIVE, SUITE 207	33176
S.S.R. CONSULTANTS, INC.	9380 SW 150 STREET, SUITE 200	33176
SOUTH MIAMI PEDIATRIC PROFESIONALS P.A.	8701 SW 128 STREET	33176
CANNING MICHAEL M.D. P.A.	8950 N KENDALL DRIVE, SUITE 402	33176
HERNAN R. BAQUERIZO M.D. P.A.	8950 N KENDALL DRIVE, SUITE 402	33176
BLAS A. REYES M.D. PA	8940 N KENDALL DRIVE, SUITE 1002E	33176
ADVANCED MEDICAL SPECIALTIES	8940 N KENDALL DRIVE, SUITE 603 E	33176
SOUTH FLORIDA PERINATAL MEDICINE	8940 N KENDALL DRIVE, SUITE 901E	33176
GOODMAN M.D. NEIL F.	9150 SW 87 AVENUE, SUITE 210	33176
WEST SUNSET PEDIATRIC GROUP	8740 N KENDALL DRIVE, SUITE 110	33176
MIAMI CHILDREN'S HOSPITAL PEDIATRIC CARE CENTER KE	8740 N KENDALL DRIVE, SUITE 210	33176
BOYETT MD ROBERT E.	8955 SW 87 COURT, SUITE 214	33176
HOFF, MICHAEL, MD PA	8955 SW 87 COURT, SUITE 203	33176
GELY PEDIATRICS LLC	8740 SW 88 STREET, SUITE 212	33176
FRIDMAN ROBERTO M.D. PA	8700 N KENDALL DRIVE, SUITE 202	33176
UNITED ONCOLOGY MEDICAL ASSOCIATES OF FLORIDA LLC	8700 SW 88 STREET, SUITE 100	33176
SOKOLOWICZ & HELLER MD PA	8525 SW 92 STREET, SUITE D13	33156
KATIMS & WEISSMAN ENDOCRINOLOGY ASSOC. P.A.	7867 N KENDALL DRIVE 80	33156

Facility Name	Address	Zip Code
JAIME P. NAHMIA M.D. P.A.	8950 SW 74 COURT, SUITE 1402	33156
MIAMI NEUROLOGICAL INSTITUTE	8950 SW 74 COURT, SUITE 1206-1210	33156
GOMEZ RENE J.	7400 N KENDALL DRIVE, SUITE 511	33156
RODRIGUEZ OFER D.O.	7400 N KENDALL DRIVE, SUITE 311	33156
BAKER PLASTIC SURGERY P.A.	9155 S DADELAND BOULEVARD, SUITE PH1708	33156
A CHOICE FOR WOMEN	6660 SW 117 AVENUE	33183
INTERNATIONAL RESEARCH ASSOCIATES LLC	8200 SW 117 AVENUE, SUITE 210	33183
SIRVEN AND ARRONTE LLC	8200 SW 117 AVENUE, SUITE 304	33183
WEST KENDALL AESTHETIC & LASER CENTER	8200 SW 117 AVENUE, SUITE 304	33183
RAMIRO NIEVES MD PA	8200 SW 117 AVENUE, SUITE 104A	33183
CRISTIAN BRETON M D P.A.	8200 SW 117 AVENUE, SUITE 210	33183
PLANNED PARENTHOOD OF SOUTH FLORIDA AND THE TREASU	11440 N KENDALL DRIVE, SUITE 109	33176
NEW WORLD HAND CENTER, P.A.	9570 SW 107 AVENUE, SUITE 103	33176
JACKSON PUBLIC HEALTH TRUST	9380 SW 150 STREET, SUITE 250	33176
GINO VITIELLO M.D.	9299 SW 152 STREET, SUITE 202	33157
GASTRO HEALTH PL - CC15 / EDWARD J. FELLER MD	8353 SW 124TH STREET, SUITE 203	33156
UNIVERSITY OF MIAMI - OB/GYN	8932 SW 97 AVENUE, SUITE L	33176
ROBERT E. ADEN, M.D. PA	9595 N KENDALL DRIVE, SUITE 210	33176
BAPTIST HEALTH MEDICAL GROUP	8950 N KENDALL DRIVE, SUITE 507 W	33176
MIAMI PLASTIC SURGERY	8940 N KENDALL DRIVE, SUITE 903E	33176
INTERVENTIONAL REHABILITATION OF SOUTH FLORIDA	8755 SW 94TH STREET, SUITE 300	33176
SOUTH FLORIDA SURGICAL GROUP	8755 SW 94 STREET, SUITE 200	33176
KHOURI DIABETES EYE CENTER/EYE SURGEONS ASSOC., PL	9000 SW 87 COURT, SUITE 206	33176
NEUROSCIENCE CONSULTANTS DIAGNOSTIC CENTER	9090 SW 87 COURT 101	33176
TAMPA PAIN RELIEF CENTER INC. DBA KENDALL PAIN REL	8740 N KENDALL DRIVE, SUITE 117	33176
ALLERGY & IMMUNOLOGY CENTER	8740 N KENDALL DRIVE, SUITE 215	33176
VICTORY PAIN CENTER	8740 N KENDALL DRIVE, SUITE 114	33176
ASSOCIATED MEDICAL MANAGERS INC.	8700 N KENDALL DRIVE, SUITE 204	33176
SHAPIRO M.D. PA DOUGLAS B.	8700 N KENDALL DRIVE, SUITE 101	33176
FILI MICHAEL D. M.D.	8600 SW 92 STREET, SUITE 103	33156
MIDWIFERY ASSOCIATES	8600 SW 92 STREET, SUITE 105	33156
LOWENHERZ JAMES W. MD.PA.	8525 SW 92 STREET, SUITE 215	33156
TANNENBAUM MD PA RICHARD E.	8500 SW 92 STREET, SUITE 208	33156
DADELAND DERMATOLOGY GROUP	7400 N KENDALL DRIVE, SUITE 313	33156
FELIX A. STANZIOLA M.D.	11801 SW 90 STREET, SUITE 101	33186
NEUROLOGY ASSOCIATES GROUP	8900 SW 117 AVENUE, SUITE C-204	33186
ARAN EYE ASSOCIATES	8000 SW 117 AVENUE, SUITE 203	33183
TENDER CARE PEDIATRICS OF MIAMI LLC	8000 SW 117 AVENUE, SUITE 200	33183
SUPERIOR PAIN SOLUTIONS, LLC	8200 SW 117 AVENUE, SUITE 312	33183
EDUARDO J. GONZALEZ MD. PA	8200 SW 117 AVENUE, SUITE 114	33183
MICHAEL L. ROSS D.O.P.A.	8200 SW 117 AVENUE, SUITE 100	33183
TAKE CARE HEALTH SERVICES	11690 SW 72 STREET	33173
CORAL REEF MEDICAL OF KENDALL	11440 SW 88 STREET, SUITE 308	33176
KENDALL PEDIATRICS PARTNERS, LLC	11400 N KENDALL DRIVE, SUITE A-211	33176
PALACE NURSING HOME THE	11215 SW 84 STREET	33173
KENDALL MEDICAL PLAZA	10860 SW 88 STREET, SUITE 200	33176
DELGADO M.D. PA PABLO E.	10700 N KENDALL DRIVE, SUITE 200	33176
URIZAR GUIDO G.	9275 SW 152 STREET, SUITE 103	33157
PINIELLA M.D. P.A. CARLOS J.	9275 SW 152 STREET SW, SUITE 210	33157
BAPTIST OUTPATIENT CTR.I.S.C.	8950 N KENDALL DRIVE 2ND FL	33176
MEDICAL ARTS SURGERY CENTER	8940 N KENDALL DRIVE, SUITE 201E	33176
SOUTH FL ENT ASSOC	8940 N KENDALL DRIVE, SUITE 504E	33176
MEDICAL PARK DIAGNOSTIC CENTER	9090 SW 87 COURT	33176
ROSS M.D. ROBERT A.	9150 SW 87 AVENUE, SUITE 212	33176

Facility Name	Address	Zip Code
BAPTIST HEALTH MEDICAL GROUP	8740 N KENDALL DRIVE, SUITE 115	33176
SOUTH FLORIDA INTERNATIONAL ORTHOPAEDICS P.A.	9165 SW 87 AVENUE	33176
STRATEGO CASTANES MD PA	8740 SW 88 STREET, SUITE 218	33176
EFFECTIVE MEDICAL MANAGEMENT	8525 SW 92 STREET, SUITE B-4	33156
AA CORDERO M.D. P.A.	8500 SW 92 STREET, SUITE 102	33156
MICHEAL F. LEE, M.D.P.A.	7887 N KENDALL DRIVE, SUITE 230	33156
PRICE M.D. P.A. DEBRA	7400 N KENDALL DRIVE, SUITE 502	33156
ZAYDON THOMAS J. JR. DR.	7400 N KENDALL DRIVE, SUITE 502	33156
LIPOSUCTION & LIPOSCULPTURE CENTER OF MIAMI, INC	11780 SW 89TH STREET, FLOOR 3	33186
MARTINEZ M.D. JUVENAL E.	8900 SW 117 AVENUE, SUITE C203	33186
VARGAS CARLOS A. M.D.	11440 N KENDALL DRIVE, SUITE 212	33176
BETTER LIVING MEDICAL CENTER	11140 SW 88 STREET, SUITE 100	33176
JULIO JORGE M.D. P.A.	9560 SW 107 AVENUE, SUITE A104	33176
SYNERGY MEDICAL RESEARCH, CORP.	9950 SW 107TH AVENUE, SUITE 200	33176
JMG SPECIALTY PHYSICIANS GROUP	9380 SW 150 STREET, SUITE 210	33176
PRAGER, SIMON & ASSOCIATES LLP - INTENSIVE CARE SE	9299 CORAL REEF, SUITE 203	33157
JOSEPH STUART K. M.D. LLC	9299 SW 152 STREET, SUITE 104	33157
LOPEZ-URIZAR MD PA GLADYS	9299 SW 152 STREET, SUITE 206	33157
ELIAS FEANNY M.D.	9275 SW 152 STREET, SUITE 101	33157
GASTRO HEALTH (CC3)	8950 N KENDALL DRIVE, SUITE 306	33176
YEH ,QUESADA & ST JOHN MD'S LLC	8950 N KENDALL DRIVE, SUITE 308	33176
MAYORGA-CORTES ALVARO	8950 N KENDALL DRIVE, SUITE 405	33176
MICHAEL C. MARGULIES M.D. P.A.	8940 N KENDALL DRIVE, SUITE 704 E	33176
GROSSMAN JOHN A.I. M.D. F.A.C.SP.A.	8940 N KENDALL DRIVE, SUITE 904E	33176
CENTER FOR EXCELLENCE IN EYE CARE	8940 N KENDALL DRIVE, SUITE 400E	33176
ADVANCED MEDICAL SPECIALTIES	8940 N KENDALL DRIVE, SUITE 300E	33176
NEUROSCIENCE CONSULTANTS LLC	8940 N KENDALL DRIVE, SUITE 802 E	33176
MARCY GALINSKY M.D.	8755 SW 94 STREET, SUITE 103	33176
UNIVERSITY MEDICAL HEALTH CENTER	9000 SW 87 COURT, SUITE 105	33176
SURGICAL PARK CENTER LTD	9100 SW 87 AVENUE	33176
LEVINE M.D. P.A. GEORGE A.	8700 N KENDALL DRIVE, SUITE 102	33176
MASRI MOHAMMAD M. M.D. P.A.	9055 SW 87 AVENUE, SUITE 308	33176
THE HAND INSTITUTE PL	8905 SW 87 AVENUE	33176
SOBRADO JAVIER MD. PA.	8525 SW 92 STREET, SUITE D-17	33156
ARANGO M.D. CLAUDIA	8525 SW 92 STREET, SUITE B-7	33156
GUERRERO LUIS A. MD.	8500 SW 92 STREET, SUITE 201	33156
VASCULAR AND SPINE INSTITUTE INC	7887 N KENDALL DRIVE, SUITE 210	33156
KHARI H BRIDGES MD LLC	8950 SW 74 COURT, SUITE 1413	33156
KENDAL KIDNEY CENTER	8364 MILLS DRIVE, SUITE 1740	33183
RIGOBERTO NUNEZ M.D.	8900 SW 117 AVENUE, SUITE B101-1	33186
CESPEDES EDGARDO M. M.D.	11160 N KENDALL DRIVE, SUITE 111	33176
LAROCCA M.D. CARLOS	11130 N KENDALL DRIVE, SUITE 200	33176
LAIDA N. CASANOVA M.D. LLC	11040 N KENDALL DRIVE, SUITE C-100	33176
FLEITES, HIRIART & LOPEZ, MD, LLC	9950 SW 107 AVENUE, SUITE 101	33176
MIRTA CAMINERO M.D. SKIN DISEASES	10651 SW 88 STREET, SUITE 101	33176
DE LA ROSA MIGUEL	10621 N KENDALL DRIVE, SUITE 200	33176
PMC JACKSON SOUTH	9380 SW 150 STREET, SUITE 100	33176
CORAL REEF ORTHOPEDIC ASSOC. PA	9299 SW 152 STREET, SUITE 104	33157
DR. MARK STURGE	9299 SW 152 STREET, SUITE 205	33157
GASTRO HEALTH, PL	9555 N KENDALL DRIVE, SUITE 100	33176
CANDIDO F. DIAZ-CRUZ, MD	8950 N KENDALL DRIVE, SUITE 304W	33176
BAPTIST HOSPITAL NEUROSURGERY- SOUTH FLA SPECIALTY	8950 N KENDALL DRIVE, SUITE 407 W	33176
GYN ONCOLOGY OF MIAMI/ DR. TROY GATCLIFFE	8950 N KENDALL DRIVE 401W	33176
CARLOS G PENA MD	8940 N KENDALL DRIVE, SUITE 701E	33176
BAPTIST HEALTH MEDICAL GROUP	8940 N KENDALL DRIVE, SUITE 202 E	33176
ARCE M.D. P.A. ROBERTO	11020 SW 88 STREET, SUITE 102-C	33176

Facility Name	Address	Zip Code
GASTRO HEALTH PATHOLOGY LABORATORY	9000 SW 87 COURT, SUITE 110	33176
BRACHYTHERAPY INST. OF SO. FLA.	9300 SW 87 AVENUE, SUITE 3	33176
PRIME HEALTHPHYSICIANS/GL MEDICAL GROUP	9049 SW 87 COURT	33176
DORAL URGENT CARE, INC.	9065 SW 87 AVENUE, SUITE 101	33176
DR. BEATRICE HECKER	8955 SW 87 COURT, SUITE 115	33176
JOEL M. LEVIN M.D.	8700 N KENDALL DRIVE 206	33176
VANDEN BOSCH MEDICAL CENTER	8600 SW 92 STREET, SUITE 202	33156
DEMORIZI & POLANCO M.D. P.A.	8500 SW 92 STREET, SUITE B101	33156
RAWAN JUMEAN, M.D. PA	8500 SW 92ND STREET, SUITE 208	33156
ALVAREZ & VINUEZA, MDS, LLC	8500 SW 92 STREET, SUITE 204	33156
PHYSICIANS HEALTH CENTER.	7887 N KENDALL DRIVE, SUITE 102	33156
MORALES & ESSERMAN & GAITAN, MD. LLC	7867 N KENDALL DRIVE 2FLOOR	33156
LUIS FUENTES A.P. INTEGRATIVE DIAGNOSTICS	9420 SW 77 AVENUE, SUITE 101	33156
JULIEN J.M. MD. PA.	8950 SW 74 COURT, SUITE 1408	33156
FLORIDA WOMAN CARE LLC DBA MIAMI WOMEN CARE	7400 N KENDALL DRIVE, SUITE 404	33156
SOUTH FLORIDA OB/GYN SPECIALISTS	7400 N KENDALL DRIVE, SUITE 507	33156
FTW LLC	9200 S DADELAND BOULEVARD, SUITE 320	33156
CHANG MD PA RICHARD	10820 SW 113 PLACE	33176
PELAEZ, APOLLON, KARSENTI MDS LLC	8900 SW 117 AVENUE, SUITE B202	33186
GASTRO HEALTH	8200 SW 117TH AVENUE, SUITE 110	33183
SIRVEN & ASSOCIATE ALLERGY & ASTHMA CENTER	8200 SW 117 AVENUE, SUITE 302	33183
LUIS R. PADRON	9580 SW 107 AVENUE, SUITE 101	33176
FIRST QUALITY MEDICAL CENTER CORPORATION	8900 SW 107TH AVENUE, SUITE 311	33176
SIERRA MEDICAL CENTER GROUP, INC	10621 N KENDALL DRIVE, SUITE 213	33176
MARDY GISELLE PEDIATRIC CTR.	9299 SW 152 STREET, SUITE 207	33157
SO. FL ENT & ASSOCIATES	9275 SW 152 STREET, SUITE 212	33157
GASTRO HEALTH PL- CC16	8353 SW 124 STREET, SUITE 108	33156
SMITH & KUTNER, MD, LLC	10095 N KENDALL DRIVE, SUITE 102	33176
MILLER SCHOOL OF MEDICINE	8932 SW 97 AVENUE	33176
MEDI WEIGHT LOSS CLINIC	8950 N KENDALL DRIVE, SUITE 400	33176
HEARTWELL DIAGNOSTICS, LLC	8950 N KENDALL DRIVE, SUITE 606	33176
BAPTIST HEALTH CARDIAC & THORACIC SURGICAL GROUP	8950 N KENDALL DRIVE, SUITE 607W	33176
JOY M.D. JOSE	8950 N KENDALL DRIVE, SUITE 406 W	33176
ADVANCED MEDICAL SPECIALTIES	8940 N KENDALL DRIVE, SUITE 905E	33176
BAPTIST CHILDREN OUTPATIENT CLINIC RAGHAD KOUTOBY	8940 N KENDALL DRIVE, SUITE 603-E	33176
AZAR CARLOS A. M.D. P.A.	8940 N KENDALL DRIVE, SUITE 705E	33176
YAHIA SUSAN D.O. F.A.C.O.I.	8755 SW 94 STREET, SUITE 103	33176
NEUROSCIENCE CONSULTANTS	9090 SW 87 COURT, SUITE 201	33176
ALVAREZ M.D. P.A. JAIME	9150 SW 87 AVENUE, SUITE 208	33176
LIEVANO OB-GYN LLC DBA: ELITE OB/GYN	8720 N KENDALL DRIVE, SUITE 115	33176
SOUTH FL. INFECTIOUS DISEASE AND TROPICAL MEDICINE	8740 SW 88 STREET, SUITE 208	33176
MURTHY MD PA HALL	8600 SW 92 STREET, SUITE 102	33156
MIAMI HAND CENTER LLC	8905 SW 87 AVENUE, SUITE 101	33176
SALKIND & GLUK MD LLC.	7867 N KENDALL DRIVE, SUITE 2ND,FL	33156
CONTINUCARE MEDICAL GROUP AT KENDALL	11701 MILLS DRIVE	33183
SOUTH FLORIDA PEDIATRIC PARTNERS	6963 SW 117 AVENUE	33183
LUIS PENATE MD PA	8200 SW 117 AVENUE, SUITE 112	33183
CLAUDIO DE PRISCO, M.D., P.A.	8200 SW 117 AVENUE, SUITE 400	33183
ALEJANDRO J. MARTINEZ M.D. PEDIATRICS	11410 N KENDALL DRIVE, SUITE 301	33176
FAMILY PHYSICIANS OF KENDALL	11160 SW 88 STREET, SUITE 104	33176
LUCINDA CUERVO MD. PA	11050 N KENDALL DRIVE, SUITE 104	33176
ERMD EMERGENCY ROOM MEDICAL DOCTORS INC	10621 N KENDAL DRIVE, SUITE 101	33176
STURGE KARL MD PA	9299 CORAL REEF DRIVE, SUITE 205	33157
MED EYE ASSOC.	9299 SW 152 STREET, SUITE 101	33157
AU, M.D., PHD LAM A.	9275 SW 152 STREET, SUITE 108A	33157
CHUNG-JAMES M.D. OLIVE V.	9275 SW 152 STREET, SUITE 204	33157

Facility Name	Address	Zip Code
SANCETTA, M.D., RONALD	9275 SW 152 STREET, SUITE 208	33157
HARMONY HEALTH CENTER @ GREENBRIAR	9820 N KENDALL DRIVE	33176
TROY GATCLIFFE MD LLC	8950 N KENDALL DRIVE, SUITE 401-W	33176
PERSONAL PHYSICIANS LLC	8950 N KENDALL DRIVE, SUITE 302	33176
MIAMI CARDIOVASCULAR ASSOC.	8950 N KENDALL DRIVE, SUITE 601-06	33176
JAN PIETER HOMMEN M.D.	8940 N KENDALL DRIVE 101E	33176
MONTANE M.D. ISMAEL	8940 N KENDALL DRIVE, SUITE 706-E	33176
JOSEPH FERNANDEZ MD PA	8940 N KENDALL DRIVE, SUITE 101E	33176
NEUROSCIENCE CONSULTANTS	9090 SW 87 COURT, SUITE 200	33176
SANABRIA M.D. PA LILLIAM	8740 N KENDALL DRIVE, SUITE 106	33176
MITCH-GOMEZ CINDY M.D. P.A.	9085 SW 87 AVENUE, SUITE 201	33176
FORMAS M.D. MARIA E.	8955 SW 87 COURT, SUITE 203	33176
DISCREET GYNECOLOGY PA	8955 SW 87 COURT, SUITE 212	33176
CHRISTOPHER CRAFT COSMETIC SURGERY	8720 N KENDALL DIVIDE, SUITE 112	33176
CARLOS E. DIAZ M.D	8740 SW 88 STREET, SUITE 105	33176
A NEW YOU PHYSICIANS WELLNESS PROGRAM, INC	9055 SW 87 AVENUE, SUITE 306	33176
PULMONARY PHYSICIANS OF SOUTH FLORIDA	8600 SW 92 STREET	33156
ANTONIO A. PENA MD PA	8600 SW 92 STREET, SUITE 101	33156
FRANKLIN MD PA JAY	8525 SW 92 STREET, SUITE D14	33156
KENDALL ENDOSCOPY AND SURGERY CENTER	7875 SW 104 STREET, SUITE 201	33156
ARKADIY V. PURYGIN M.D. D.O. P.A.	8950 SW 74 COURT, SUITE 1402	33156
GROSSMAN & PRICE PA	7400 N KENDALL DRIVE, SUITE 502	33156
MIAMI INSTITUTE FOR JOINT RECONSTRUCTION	11801 SW 90 STREET, SUITE 201	33186
COMPREHENSIVE HEALTHCARE OF MIAMI LLC	8000 SW 117 AVENUE, SUITE 201	33183
PRECISION RESEARCH ORGANIZATION LLC	8200 SW 117TH AVENUE, SUITE 414	33183
MORALES ROMMEL R. M.D. P.A.	11410 N KENDALL DRIVE, SUITE B-210	33176
SUAREZ MD PA EDWARD	11120 N KENDALL DRIVE, SUITE 101	33176
WILLIAMS MD PA HANIF	11030 SW 88 STREET 200	33176
RAFAEL A. PALMEROLA, M.D.	9560 SW 107 AVENUE, SUITE 106	33176
FELCAS HEALTH CENTER INC	10661 N KENDALL DRIVE, SUITE 112	33176
JUAN A. PUERTO.MD.	10661 N KENDALL DRIVE 109	33176
DR. LEWIS J. ARRANDT WELLNESS CENTER INC.	10651 N KENDALL DRIVE, SUITE 222	33176
UNIVERSITY OF MIAMI-DIV. OF PLASTIC SURGERY	9380 SW 150 STREET, SUITE 260	33157
OBSTETRICS AND GYNECOLOGY ASSOCIATES OF KENDALL L.	9595 N KENDALL DRIVE, SUITE 103	33176
SANDROW AND KEYES M.D. P.A.	8940 SW 88 STREET, SUITE 1003E	33176
FERTILITY & IVF CENTER OF MIAMI	8950 N KENDALL DRIVE, SUITE 103	33176
SURGICAL GROUP OF MIAMI	8950 N KENDALL DRIVE, SUITE 504	33176
SALINAS M.D. HUGO C.	8950 SW 88 STREET, SUITE 402	33176
EXECUTIVE HEALTH	8950 N KENDALL DRIVE, SUITE 508W	33176
YEH, QUESADA & ST. JOHN M.D'SLLC	8950 N KENDALL DRIVE, SUITE 501	33176
P. FISHBEIN M.D.	8950 N KENDALL DRIVE, SUITE 506	33176
DEL BOCA ADRIAN M.D.P.A.	8940 N KENDALL DRIVE, SUITE 804-E	33176
UROLOGICAL ASSOCIATES	8940 N KENDALL DRIVE, SUITE 602E	33176
KROCHMAL,ROY J. M.D.,P.A.	9000 SW 87 COURT, SUITE 109	33176
MDS OF SOUTH FLORIDA ,LLC	9045 SW 87 COURT	33176
EKLUND NANCY MD PA	9085 SW 87 AVENUE, SUITE 201	33176
SKIN AND CANCER ASSOCIATES - DR. GOLDMAN	9065 SW 87 AVENUE, SUITE 109	33176
JANIS DZELZKALNS,M.D.,P.A.	8955 SW 87 COURT, SUITE 203	33176
DADELAND DIALYSIS	9175 SW 87TH AVENUE	33176
LOPEZ MARIA I. M.D.	8720 N KENDALL DRIVE, SUITE 118	33176
MIAMI CENTER OF EXCELLENCE FOR OB/GYN LLC	8700 N KENDALL DRIVE, SUITE 208	33176
HOCHMAN M.D. M.SETH	8600 SW 92 STREET, SUITE 107	33156
VELAZQUEZ LUIS A.	8600 SW 92 STREET, SUITE 109	33156
MIAMI GASTROENTEROLOGY CONSULTANTS PA	8525 SW 92 STREET, SUITE C10	33156
CHAVARRIA, VICENTE A., MD.PA.	7400 N KENDALL DRIVE, SUITE 204	33156
KRIMSHTEIN, M.D., SULIM A.	7400 N KENDALL DRIVE, SUITE 208	33156

Hospitals (Points)

Facility Name	Address	Zip Code
BAPTIST HOSPITAL OF MIAMI - BAPTIST HEALTH SOUTH FLORIDA	8900 N KENDALL DR	33176
JACKSON SOUTH COMMUNITY HOSPITAL	9333 SW 152ND ST	33157

Law Enforcement Facilities (Points)

Facility Name	Address	Zip Code
MIAMI-DADE POLICE DEPARTMENT - KENDALL STATION	7707 SW 117TH AVE	33183
MIAMI-DADE COLLEGE POLICE DEPARTMENT - KENDALL CAMPUS	11011 SW 104TH ST (RM 5118)	33176

Public and Private Schools (Points)

Facility Name	Address	Zip Code
ACADEMIR PREPARATORY ACADEMY	10870 SW 113 PLACE	33176
ACE ACADEMY CENTRAL	11025 SW 84TH ST. COTTAGE 10	33173
ACE ACADEMY	11025 SW 84 ST COTTAGE 6	33173
KENDALE ELEMENTARY SCHOOL	10693 SW 93RD ST	33176
ACCUPUNCTURE MASSAGE COLLEGE	10506 N KENDALL DRIVE	33176
SOMERSET ACADEMY BAY MIDDLE SCHOOL	9500 SW 97TH AVE	33176
THE CARRIE BRAZER CENTER FOR AUTISM INC.	8790 SW 94TH ST	33176
KENWOOD K-8 CENTER	9300 SW 79TH AVE	33156
CITY COLLEGE	9300 S DADELAND BLVD	33156
CHILDREN'S RESOURCES	8571 SW 112TH ST	33156
BRUCIE BALL EDUCATIONAL CENTER	11001 SW 76TH ST	33134
MIAMI YOUTH ACADEMY	10855 SW 84 STREET	33173
TINY STEPS PRESCHOOL	10491 SW 88 ST	33176
UNIVERSITY OF MIAMI	8932 SW 97TH AVE	33176
ROSEMONT ACADEMY	9400 SW 87 AVENUE	33176
VINELAND K-8 CENTER	8455 SW 119TH ST	33156
FLORIDA HIGH SCHOOL ACADEMY	9190 SW 82 AVE	33156
WAYSIDE BAPTIST PRESCHOOL	7701 SW 98TH STREET	33156
KILLIAN OAKS ACADEMY	10545 SW 97TH AVE	33176
ATLANTIS ACADEMY	9600 SW 107TH AVE	33176
EDUVILLAGE LEARNING CENTER	8990 S.W 97TH AVENUE	33176
BET BREIRA SCHOOL	9400 SW 87TH AVE	33176
LA SCUOLA	13301 SW 87TH AVE	33176
NATIONAL HIGH SCHOOL ACADEMY	9190 SW 82 AVENUE	33156
OXFORD ACADEMY OF MIAMI	10870 SW 113TH PL	33176
GREENFIELD DAY SCHOOL	11155 SW 112TH AVE	33176
GLORIA FLOYD ELEMENTARY SCHOOL	12650 SW 109TH AVE	33176
RIVERSIDE BAPTIST CHILD DEVELOPMENT CENTER	10775 SW 104TH ST	33176
LEEWOOD K-8 CENTER	10343 SW 124TH ST	33176
SOL ACADEMY	8795 SW 112TH ST	33176
BRIDGEPREP ACADEMY COLLIER	7990 SW 117 AVE	33183
RUTH OWENS KRUSE EDUCATION CENTER	11001 SW 76TH ST	33173
BEN GAMLA CHARTER SCHOOL	1121 MARSEILLE DR	33155
BE UNIQUE ACADEMY	11155 SW 112 AVENUE	33176
SAINT JOHN NEUMANN SCHOOL	12115 SW 107TH AVE	33176
MIAMI KILLIAN SENIOR HIGH SCHOOL	10655 SW 97TH AVE	33176
ATLANTIS ACADEMY 2	10855 SW 72 ST 49	33173
ADVANTAGE ACADEMY SANTA FE	9790 SW 107TH CT	33176
OUR PRIDE ACADEMY INC.	10100 SW 107 AVENUE	33176
MC GLANNAN SCHOOL	10770 SW 84TH ST	33173
SUNSET PARK ELEMENTARY SCHOOL	10235 SW 84TH ST	33173
CATTOIRA MONTESSORI SCHOOL	9385 SW 79TH AVE	33156
SMART STARTS AT DADELAND	7900 SW 86 STREET	33143
WILLIAM H. LEHMAN ELEMENTARY SCHOOL	10990 SW 113TH PL	33176
SCHOOL FOR ADVANCED STUDIES - SOUTH	11011 SW 104TH ST	33176

Facility Name	Address	Zip Code
CONCORDIA LUTHERAN SCHOOL	8701 SW 124TH STREET	33176
TERRA ENVIRONMENTAL RESEARCH INSTITUTE	11005 SW 84 ST	33173
KAYLEENS LEARNING CENTER	10855 SW 72ND ST	33173
OUR LADY OF THE ROSARY SCHOOL	10701 SW 95TH ST	33176
RIVIERA PREPARATORY SCHOOL	9775 SW 87TH AVE	33176
KENDALL CHRISTIAN SCHOOL	8485 SW 112TH ST	33156
THE ROIG ACADEMY	8000 SW 112TH ST	33156
MIAMI DADE COLLEGE - SOUTH CAMPUS	11011 SW 104TH ST	33176
KIDDIE KAMPUS LEARNING CENTER	10570 SW 97 AVENUE	33176
KILLIAN MONTESSORI SCHOOL	8640 SW 112TH STREET	33156
VICTORIA'S PLAYHOUSE DAYCARE PRE-K	10095 SW 88 ST SUITE 101	33176
SOMERSET ACADEMY BAY	9500 SW 97TH AVE	33176
VILLAGE PINES SCHOOL	15000 SW 92ND AVE	33176
FLORIDA CAREER COLLEGE-KENDALL	11731 MILLS DRIVE	33183
INSTRUCTIONAL CENTER SYSTEM WIDE	11001 SW 76TH ST RM 82	33173

Religious Centers (Points)

Facility Name	Address	Zip Code
RIVERSIDE BAPTIST CHURCH	10775 SOUTHWEST 104TH STREET	33176
AHAVAT OLAM	9085 SW 87TH AVENUE	33176
JEHOVAH'S WITNESSES	9501 SW 117TH AVENUE	33186
CATHOLIC COMMUNITY SERVICE	11440 N KENDALL DRIVE	33176
KILLIAN PINES UNITED METHODIST	10755 SW 112TH STREET	33176
ST ANDREW GREEK ORTHODOX CHURCH	7901 N KENDALL DRIVE	33156
MIAMI BAPTIST ASSOCIATION	7855 SW 104TH STREET # 210	33156
SAINT JOHN NEUMANN CATHOLIC CHURCH	12125 SOUTHWEST 107TH AVENUE	33176
BET BREIRA CONGREGATION	9400 SW 87TH AVENUE	33176
GRACE CHURCH OF KENDALL	8100 SW 104 ST	33156
BETHANY CHRISTIAN CHURCH	8900 NORTH KENDALL DRIVE	33176
ST JOHN MISSIONARY BAPTIST CHURCH	8819 SW 126TH TERRACE	33176
TEMPLE BETH OR	11715 SOUTHWEST 87TH AVENUE	33176
FIRST FRIENDSHIP UNITED METHODIST CHURCH	7700 NORTH KENDALL DRIVE	33156
CHRIST TRUE & FAITHFUL MINISTRIES	10680 SW 113TH PLACE	33176
ADVENT CHRISTIAN OAK GROVE CHURCH	11211 SW 102ND AVENUE	33176
THIRD CHURCH OF CHRIST SCIENTIST	11001 SOUTHWEST 87TH AVENUE	33176
THE CHURCH OF JESUS CHRIST OF LATTER DAY SAINTS - MIAMI 4TH WARD	10000 SOUTHWEST 107TH AVENUE	33176
ST CATHERINE OF SIENA CHURCH	9200 SOUTHWEST 107TH AVENUE	33176
CHABAD OF KENDALL	8700 SOUTHWEST 112TH STREET	33176
FLORIDA BAPTIST CHILDRENS HOMES	7750 SOUTHWEST 95TH TERRACE	33156
KENDALL PRESBYTERIAN CHURCH	8485 SW 112TH STREET	33156
WAYSIDE BAPTIST CHURCH	7701 SOUTHWEST 98TH STREET	33156
KENDALL CHURCH OF GOD	8795 SW 112TH STREET	33176
CONCORDIA LUTHERAN CHURCH	8701 SOUTHWEST 124TH STREET	33176

Social Services (Geocoded)

Facility Name	Address	Zip Code
FLORIDA BAPTIST CHILDRENS HOMES REGIONAL OFFICE/CAMPUS - MIAMI	7748 SW 95TH TERRACE	33156
FLORIDA BAPTIST CHILDREN'S HOMES	7748 SW 95TH TER	33156
PINNACLE HOUSING GROUP	104 SW 9TH ST	33130

US Census Places

Facility Name
Pinecrest
The Crossings
Kendale Lakes
Palmetto Estates
Glenvar Heights

Facility Name

Kendall

Palmetto Bay

Westwood Lakes

Richmond Heights

Three Lakes

Sunset

Block Groups

The following Census Block Groups were used to calculate demographics for this report.

1990 Census Block Groups

120250084091, 120250078032, 120250086004, 120250084062, 120250077033, 120250078039, 120250078025, 120250101282, 120250084052, 120250084071, 120250078031, 120250083014, 120250086005, 120250084069, 120250101114, 120250081005, 120250081006, 120250081007, 120250101283, 120250101245, 120250087008, 120250084083, 120250084059, 120250084082, 120250084084, 120250084051, 120250077032, 120250084089, 120250084049, 120250083011, 120250084043, 120250084072, 120250084092

2000 Census Block Groups

120860084141, 120860086023, 120860084143, 120860083051, 120860078032, 120860078033, 120860101114, 120860084072, 120860083052, 120860084071, 120860081005, 120860081007, 120860078024, 120860076043, 120860084131, 120860084121, 120860084112, 120860082011, 120860081006, 120860084114, 120860084091, 120860084101, 120860084102, 120860084113, 120860084153, 120860084132, 120860084111, 120860084053, 120860084154, 120860084052, 120860084103, 120860084142, 120860086021, 120860101761, 120860101243, 120860101245, 120860084144, 120860084151, 120860083041, 120860078031, 120860077032, 120860078025, 120860101772, 120860101244, 120860084152, 120860084051, 120860084092, 120860077033

2010 Census Block Groups

120860084141, 120860084103, 120860084172, 120860083054, 120860084154, 120860083052, 120860084052, 120860078053, 120860078042, 120860077051, 120860077043, 120860078073, 120860191004, 120860191001, 120860157001, 120860084102, 120860156002, 120860084192, 120860084056, 120860084092, 120860078052, 120860078071, 120860084121, 120860084072, 120860084074, 120860078045, 120860078044, 120860081022, 120860078041, 120860157002, 120860156001, 120860084174, 120860086023, 120860084057, 120860084152, 120860083055, 120860078054, 120860078043, 120860082063, 120860082062, 120860081021, 120860078072, 120860084104, 120860084123, 120860084171, 120860084143, 120860084122, 120860084173, 120860084191, 120860084161, 120860084151, 120860084054, 120860084162, 120860084051, 120860083051, 120860084093, 120860077052, 120860077042, 120860192002, 120860084124, 120860084175, 120860084142, 120860084144, 120860086021, 120860084153, 120860084071, 120860083053, 120860084053, 120860081024, 120860076044, 120860084101, 120860084105, 120860084181, 120860084193, 120860083061, 120860084055, 120860084091, 120860084163, 120860084073, 120860084094, 120860078051

2017 Census Block Groups

120860192002, 120860083052, 120860084141, 120860156001, 120860084142, 120860084181, 120860084072, 120860083053, 120860084055, 120860084052, 120860082062, 120860081024, 120860084104, 120860084124, 120860084172, 120860086021, 120860084161, 120860084054, 120860084057, 120860084154, 120860084074, 120860084073, 120860078054, 120860082063, 120860077051, 120860077042, 120860077043, 120860084101, 120860084102, 120860084173, 120860083054, 120860084162, 120860084051, 120860083055, 120860084093, 120860084091, 120860078052, 120860084094, 120860078043, 120860077052, 120860078073, 120860084175, 120860084191, 120860084151, 120860084056, 120860083051, 120860084092, 120860081022, 120860076044, 120860084103, 120860086023, 120860084121, 120860084143, 120860084163, 120860084153, 120860084071, 120860084152, 120860084053, 120860078042, 120860078071, 120860084123, 120860084105, 120860083061, 120860078051, 120860078045, 120860157002, 120860084171, 120860084174, 120860156002, 120860084122, 120860084144, 120860084193, 120860084192, 120860078053, 120860078044, 120860081021, 120860078041, 120860078072

Data Sources

Area

The geographic area of the community based on a user-specified community boundary or area of interest (AOI) boundary.

Jurisdiction

Jurisdiction(s) includes local government boundaries that intersect the community or AOI boundary.

Demographic Data

Demographic data reported under the headings General Population Trends, Race and Ethnicity Trends, Age Trends, Income Trends, Educational Attainment Trends, Language Trends, and Housing Trends is from the U.S. Decennial Census (1990, 2000) and the American Community Survey (ACS) 5-year estimates from 2006-2010 and 2013-2017. The data was gathered at the block group level for user-specified community boundaries and AOIs, and at the county level for counties. Depending on the dataset, the data represents 100% counts (Census Summary File 1) or sample-based information (Census Summary File 3 or ACS).

About the Census Data:

User-specified community boundaries and AOIs do not always correspond precisely to block group boundaries. In these instances, adjustment of the geographic area and data for affected block groups is required to estimate the actual population. To improve the accuracy of such estimates in the SDR report, the census block group data was adjusted to exclude all census blocks with a population of two or fewer. These areas were eliminated from the corresponding years' block groups. Next, the portion of the block group that lies outside of the community or AOI boundary was removed. The demographics within each block group were then recalculated, assuming an equal area distribution of the population. Note that there may be areas where there is no population.

Use caution when comparing the 100% count data (Decennial Census) to the sample-based data (ACS). In any given year, about one in 40 or 2.5% of U.S. households will receive the ACS questionnaire. Over any five-year period, about one in eight households will receive the questionnaire, as compared to about one in six that received the long form questionnaire for the Decennial Census 2000. (Source: <http://mcdc.missouri.edu/pub/data/acs/Readme.shtml>) The U.S. Census Bureau provides help with this process:

<https://www.census.gov/programs-surveys/acs/guidance/comparing-acs-data/2017.html>

Use caution when interpreting changes in Race and Ethnicity over time. Starting with the 2000 Decennial Census, respondents were given a new option of selecting one or more race categories. Also in 2000, the placement of the question about Hispanic origin changed, helping to increase responsiveness to the Hispanic-origin question. Because of these and other changes, the 1990 data on race and ethnicity are not directly comparable with data from later censuses. (Source: <http://www.census.gov/prod/2001pubs/c2kbr01-1.pdf>;
<http://www.census.gov/pred/www/rpts/Race%20and%20Ethnicity%20FINAL%20report.pdf>)

The "Minority" calculations are derived from Census and ACS data using both the race and ethnicity responses. On this report, "Minority" refers to individuals who list a race other than White and/or list their ethnicity as Hispanic/Latino. In other words, people who are multi-racial, any single race other than White, or Hispanic/Latino of any race are considered minorities.

Disability data is not included in the 2010 Decennial Census, or the 2006-2010 ACS. This data is available in the 2013-2017 ACS.

Because of changes made to the Census and ACS questions between 1990 and 2017, disability variables should not be compared from year to year. For example: 1) With the 1990 data the disabilities are listed as a "work disability" while this distinction is not made with 2000 or 2017 ACS data; 2) The 2017 ACS data includes the institutionalized population (e.g. persons in prisons and group homes), while this population is not included in 1990 or 2000; 3) the age groupings changed over the years.

Please take the following two concerns into account when viewing this data: 1) With the 1990 data the disabilities are listed as a "work disability" while this distinction is not made with 2000 or 2017 ACS data; 2) The 2017 ACS data includes the institutionalized population (e.g. persons in prisons and group homes), while this population is not included in 1990 or 2000.

The category Bachelor's Degree or Higher under the heading Educational Attainment Trends is a subset of the category High School Graduate or Higher.

Income of households. This includes the income of the householder and all other individuals 15 years old and over in the household, whether they are related to the householder or not. Because many households consist of only one person, average household income is usually less than average family income.

Income of families. In compiling statistics on family income, the incomes of all members 15 years old and over related to the householder are summed and treated as a single amount.

Age Trends median age for 1990 is not available.

Land Use Data

The Land Use information Indicates acreages and percentages for the generalized land use types used to group parcel-specific, existing land use assigned by the county property appraiser office according to the Florida Department of Revenue land use codes.

Community Facilities Data

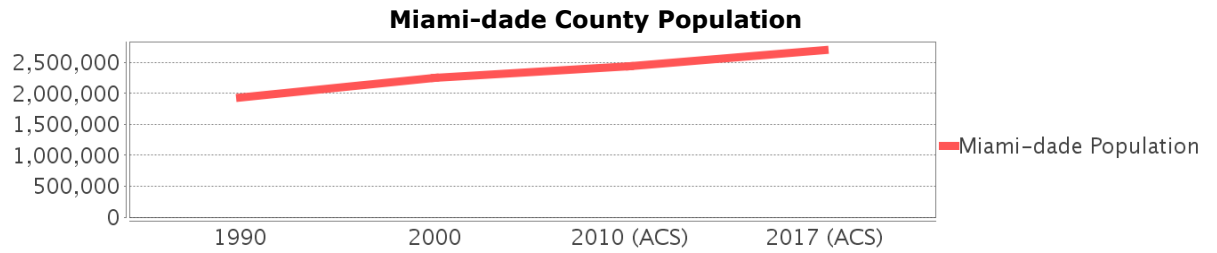
- Assisted Rental Housing Units - Identifies multifamily rental developments that receive funding assistance under federal, state, and local government programs to offer affordable housing as reported by the Shimberg Center for Housing Studies, University of Florida.
- Mobile Home Parks - Identifies approved or acknowledged mobile home parks reported by the Florida Department of Business and Professional Regulation and Florida Department of Health.
- Migrant Camps - Identifies migrant labor camp facilities inspected by the Florida Department of Health.
- Group Care Facilities - Identifies group care facilities inspected by the Florida Department of Health.
- Community Center and Fraternal Association Facilities - Identifies facilities reported by multiple sources.
- Law Enforcement Correctional Facilities - Identifies facilities reported by multiple sources.
- Cultural Centers - Identifies cultural centers including organizations, buildings, or complexes that promote culture and arts (e.g., aquariums and zoological facilities; arboreta and botanical gardens; dinner theaters; drive-ins; historical places and services; libraries; motion picture theaters; museums and art galleries; performing arts centers; performing arts theaters; planetariums; studios and art galleries; and theater producers stage facilities) reported by multiple sources.
- Fire Department and Rescue Station Facilities - Identifies facilities reported by multiple sources.
- Government Buildings - Identifies local, state, and federal government buildings reported by multiple sources.
- Health Care Facilities - Identifies health care facilities including abortion clinics, dialysis clinics, medical doctors, nursing homes, osteopaths, state laboratories/clinics, and surgicenters/walk-in clinics reported by the Florida Department of Health.
- Hospital Facilities - Identifies hospital facilities reported by multiple sources.
- Law Enforcement Facilities - Identifies law enforcement facilities reported by multiple sources.
- Parks and Recreational Facilities - Identifies parks and recreational facilities reported by multiple sources.

- Religious Center Facilities - Identifies religious centers including churches, temples, synagogues, mosques, chapels, centers, and other types of religious facilities reported by multiple sources.
- Private and Public Schools - Identifies private and public schools reported by multiple sources.
- Social Service Centers - Identifies social service centers reported by multiple sources.
- Veteran Organizations and Facilities

Miami-dade County Demographic Profile

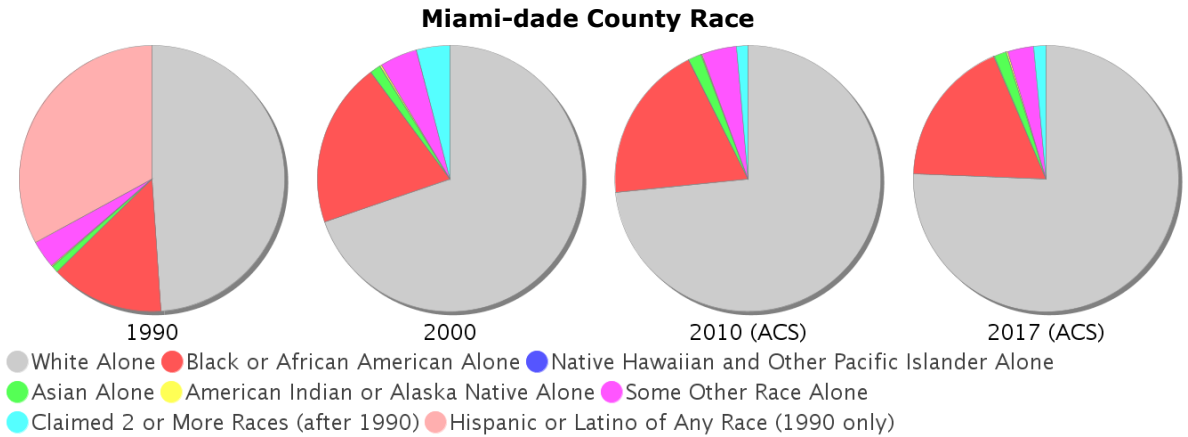
General Population Trends - Miami-dade

Description	1990	2000	2010 (ACS)	2017 (ACS)
Total Population	1,937,094	2,253,362	2,445,374	2,702,602
Total Households	692,355	776,774	827,556	858,289
Average Persons per Acre	1.528	1.774	1.925	2.128
Average Persons per Household	2.798	2.84	3.00	3.09
Average Persons per Family	3.413	3.488	3.591	3.926
Males	928,411	1,086,558	1,182,784	1,311,997
Females	1,008,683	1,166,804	1,262,590	1,390,605



Race and Ethnicity Trends - Miami-dade

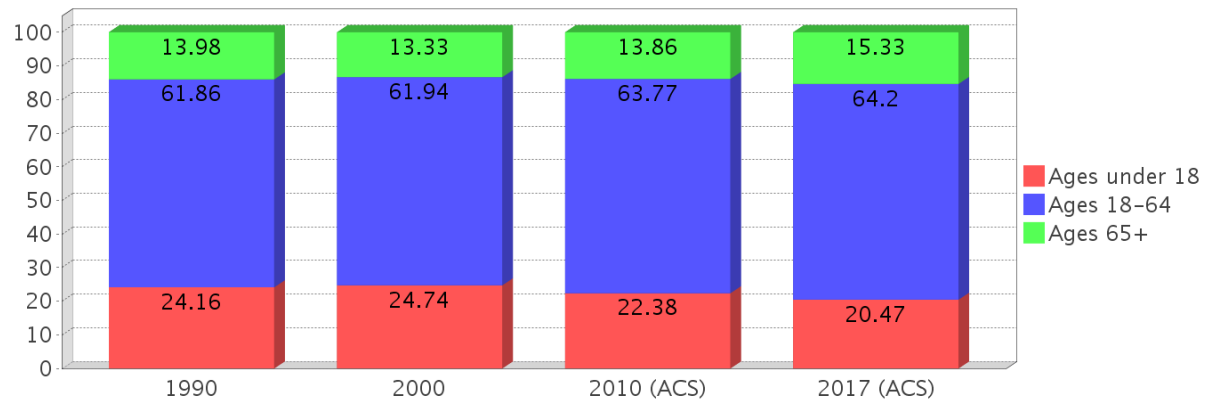
Description	1990	2000	2010 (ACS)	2017 (ACS)
White Alone	1,413,015 (72.95%)	1,570,990 (69.72%)	1,794,730 (73.39%)	2,043,272 (75.60%)
Black or African American Alone	397,993 (20.55%)	452,333 (20.07%)	470,326 (19.23%)	485,602 (17.97%)
Native Hawaiian and Other Pacific Islander Alone	(NA)	605 (0.03%)	649 (0.03%)	724 (0.03%)
Asian Alone	25,869 (1.34%)	30,692 (1.36%)	38,813 (1.59%)	42,770 (1.58%)
American Indian or Alaska Native Alone	3,066 (0.16%)	4,841 (0.21%)	3,572 (0.15%)	4,040 (0.15%)
Some Other Race Alone	96,713 (4.99%)	102,436 (4.55%)	102,938 (4.21%)	84,892 (3.14%)
Claimed 2 or More Races	(NA)	91,465 (4.06%)	34,346 (1.40%)	41,302 (1.53%)
Hispanic or Latino of Any Race	953,407 (49.22%)	1,291,681 (57.32%)	1,565,410 (64.02%)	1,823,038 (67.45%)
Not Hispanic or Latino	983,687 (50.78%)	961,681 (42.68%)	879,964 (35.98%)	879,564 (32.55%)
Minority	2,112,884 (109.07%)	1,787,468 (79.32%)	2,112,884 (86.40%)	2,331,369 (86.26%)



Age Trends - Miami-dade

Description	1990	2000	2010 (ACS)	2017 (ACS)
Under Age 5	7.21%	6.43%	6.20%	5.78%
Ages 5-17	16.95%	18.31%	16.18%	14.69%
Ages 18-21	5.60%	5.24%	5.83%	5.06%
Ages 22-29	13.10%	10.97%	10.98%	11.21%
Ages 30-39	16.06%	16.33%	14.14%	13.89%
Ages 40-49	12.47%	14.49%	15.67%	14.68%
Ages 50-64	14.63%	14.90%	17.15%	19.37%
Age 65 and Over	13.98%	13.33%	13.86%	15.33%
-Ages 65-74	7.54%	7.23%	7.34%	8.19%
-Ages 75-84	4.88%	4.41%	4.71%	4.95%
-Age 85 and Over	1.55%	1.69%	1.81%	2.20%
Median Age	NA	36	38	40

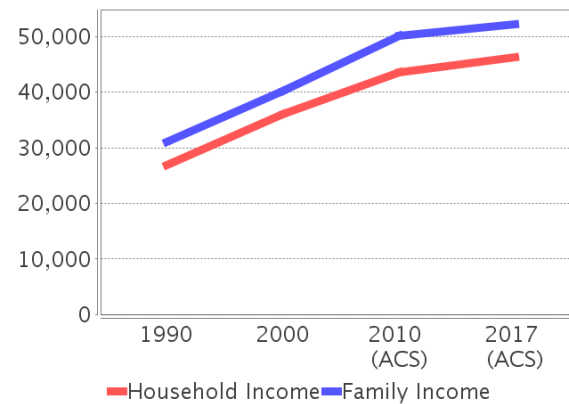
Percentage Population by Age Group - Miami-dade



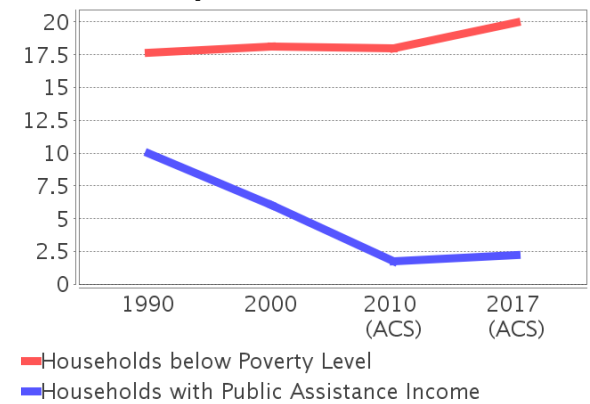
Income Trends - Miami-dade

Description	1990	2000	2010 (ACS)	2017 (ACS)
Median Household Income	\$26,909	\$35,966	\$43,605	\$46,338
Median Family Income	\$31,113	\$40,260	\$50,065	\$52,235
Population below Poverty Level	17.94%	17.97%	17.18%	18.98%
Households below Poverty Level	17.62%	18.10%	18.02%	19.95%
Households with Public Assistance Income	9.96%	6.01%	1.74%	2.24%

Income Trends



Poverty and Public Assistance



Disability Trends - Miami-dade

See the Data Sources section below for an explanation about the differences in disability data among the various years.

Description	1990	2000	2010 (ACS)	2017 (ACS)
Population 16 To 64 Years with a disability	78,949 (5.28%)	324,062 (15.60%)	NA (NA)	NA (NA)
Population 20 To 64 Years with a disability	NA (NA)	NA (NA)	NA (NA)	114,936 (6.96%)

Educational Attainment Trends - Miami-dade

Age 25 and Over

Description	1990	2000	2010 (ACS)	2017 (ACS)
Less than 9th Grade	228,426 (17.83%)	219,066 (14.68%)	202,413 (12.23%)	194,934 (10.23%)
9th to 12th Grade, No Diploma	219,856 (17.16%)	260,287 (17.45%)	178,335 (10.77%)	167,399 (8.78%)
High School Graduate or Higher	833,013 (65.01%)	1,012,436 (67.87%)	1,274,809 (77.00%)	1,543,966 (80.99%)
Bachelor's Degree or Higher	240,460 (18.77%)	323,399 (21.68%)	434,574 (26.25%)	530,196 (27.81%)

Language Trends - Miami-dade

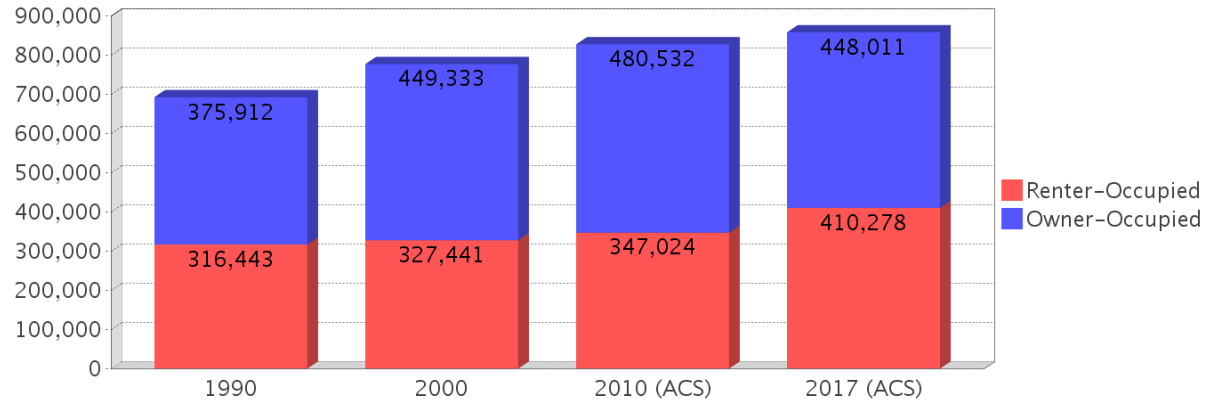
Age 5 and Over

Description	1990	2000	2010 (ACS)	2017 (ACS)
Speaks English Well	221,943 (12.34%)	285,783 (13.55%)	302,397 (13.18%)	333,659 (13.10%)
Speaks English Not Well	NA (NA)	261,782 (12.42%)	294,777 (12.85%)	317,308 (12.46%)
Speaks English Not at All	NA (NA)	184,249 (8.74%)	217,650 (9.49%)	241,775 (9.49%)
Speaks English Not Well or Not at All	341,005 (18.96%)	446,031 (21.15%)	512,427 (22.34%)	559,083 (21.96%)

Housing Trends - Miami-dade

Description	1990	2000	2010 (ACS)	2017 (ACS)
Total	771,288	852,278	980,580	1,008,908
Units per Acre	0.608	0.671	0.772	0.794
Single-Family Units	365,600	448,569	508,364	503,457
Multi-Family Units	301,870	387,550	457,465	492,080
Mobile Home Units	15,359	15,338	14,234	13,071
Owner-Occupied Units	375,912	449,333	480,532	448,011
Renter-Occupied Units	316,443	327,441	347,024	410,278
Vacant Units	78,933	75,504	153,024	150,619
Median Housing Value	\$86,000	\$113,200	\$269,600	\$242,800
Occupied Housing Units w/No Vehicle	110,809 (16.00%)	111,323 (14.33%)	91,558 (11.06%)	92,055 (10.73%)

Housing Tenure - Miami-dade



County Data Sources

Demographic data reported is from the U.S. Decennial Census (1990, 2000) and the American Community Survey (ACS) 5-year estimates from 2006-2010 and 2013-2017. The data was gathered at the county level. Depending on the dataset, the data represents 100% counts (Census Summary File 1) or sample-based information (Census Summary File 3 or ACS).

About the Census Data:

Use caution when comparing the 100% count data (Decennial Census) to the sample-based data (ACS). In any given year, about one in 40 or 2.5% of U.S. households will receive the ACS questionnaire. Over any five-year period, about one in eight households will receive the questionnaire, as compared to about one in six that received the long form questionnaire for the Decennial Census 2000. (Source: <http://mcdc.missouri.edu/pub/data/acs/Readme.shtml>) The U.S. Census Bureau provides help with this process:

<https://www.census.gov/programs-surveys/acs/guidance/comparing-acs-data/2017.html>

Use caution when interpreting changes in Race and Ethnicity over time. Starting with the 2000 Decennial Census, respondents were given a new option of selecting one or more race categories. Also in 2000, the placement of the question about Hispanic origin changed, helping to increase responsiveness to the Hispanic-origin question. Because of these and other changes, the 1990 data on race and ethnicity are not directly comparable with data from later censuses. (Source: <http://www.census.gov/prod/2001pubs/c2kbr01-1.pdf>;
<http://www.census.gov/pred/www/rpts/Race%20and%20Ethnicity%20FINAL%20report.pdf>)

The "Minority" calculations are derived from Census and ACS data using both the race and ethnicity responses. On this report, "Minority" refers to individuals who list a race other than White and/or list their ethnicity as Hispanic/Latino. In other words, people who are multi-racial, any single race other than White, or Hispanic/Latino of any race are considered minorities.

Disability data is not included in the 2010 Decennial Census, or the 2006-2010 ACS. This data is available in the 2013-2017 ACS.

Because of changes made to the Census and ACS questions between 1990 and 2017, disability variables should not be compared from year to year. For example: 1) With the 1990 data the disabilities are listed as a "work disability" while this distinction is not made with 2000 or 2017 ACS data; 2) The 2017 ACS data includes the institutionalized population (e.g. persons in prisons and group homes), while this population is not included in 1990 or 2000; 3) the age groupings changed over the years.

Please take the following two concerns into account when viewing this data: 1) With the 1990 data the disabilities are listed as a "work disability" while this distinction is not made with 2000 or 2017 ACS data; 2) The 2017 ACS data includes the institutionalized population (e.g. persons in prisons and group homes), while this population is not included in 1990 or 2000.

source:

<https://www.census.gov/people/disability/methodology/acs.html>

<https://www.census.gov/population/www/cen2000/90vs00/index.html>

The category Bachelor's Degree or Higher under the heading Educational Attainment Trends is a subset of the category High School Graduate or Higher.

Metadata

- Community and Fraternal Centers https://etdmpub.florida-etat.org/metadata/gc_communitycenter.htm
- Correctional Facilities in Florida https://etdmpub.florida-etat.org/metadata/gc_correctional.htm
- Cultural Centers in Florida https://etdmpub.florida-etat.org/metadata/gc_culturecenter.htm
- Fire Department and Rescue Station Facilities in Florida https://etdmpub.florida-etat.org/metadata/gc_firestat.htm
- Local, State, and Federal Government Buildings in Florida https://etdmpub.florida-etat.org/metadata/gc_govbuild.htm
- Florida Health Care Facilities https://etdmpub.florida-etat.org/metadata/gc_health.htm
- Hospital Facilities in Florida https://etdmpub.florida-etat.org/metadata/gc_hospitals.htm
- Law Enforcement Facilities in Florida https://etdmpub.florida-etat.org/metadata/gc_lawenforce.htm
- Florida Parks and Recreational Facilities https://etdmpub.florida-etat.org/metadata/gc_parks.htm
- Religious Centers https://etdmpub.florida-etat.org/metadata/gc_religion.htm
- Florida Public and Private Schools https://etdmpub.florida-etat.org/metadata/gc_schools.htm
- Social Service Centers https://etdmpub.florida-etat.org/metadata/gc_socialservice.htm
- Assisted Rental Housing Units in Florida https://etdmpub.florida-etat.org/metadata/gc_assisted_housing.htm
- Group Care Facilities <https://etdmpub.florida-etat.org/metadata/groupcare.htm>
- Mobile Home Parks in Florida https://etdmpub.florida-etat.org/metadata/gc_mobilehomes.htm
- Migrant Camps in Florida <https://etdmpub.florida-etat.org/metadata/migrant.htm>
- Veteran Organizations and Facilities https://etdmpub.florida-etat.org/metadata/gc_veterans.htm
- Generalized Land Use - Florida DOT District 6 https://etdmpub.florida-etat.org/metadata/d6_lu_gen.htm
- Census Block Groups in Florida https://etdmpub.florida-etat.org/metadata/e2_cenacs_cci.htm
- 1990 Census Block Groups in Florida https://etdmpub.florida-etat.org/metadata/e2_cenblkgrp_1990_cci.htm
- 2000 Census Block Groups in Florida https://etdmpub.florida-etat.org/metadata/e2_cenblkgrp_2000_cci.htm
- 2010 Census Block Groups in Florida https://etdmpub.florida-etat.org/metadata/e2_cenblkgrp_2010_cci.htm