

Sociocultural Data Report

Lacoochee

Area: 2.867 square miles
Jurisdiction(s): Cities: NA
 Counties: Pasco

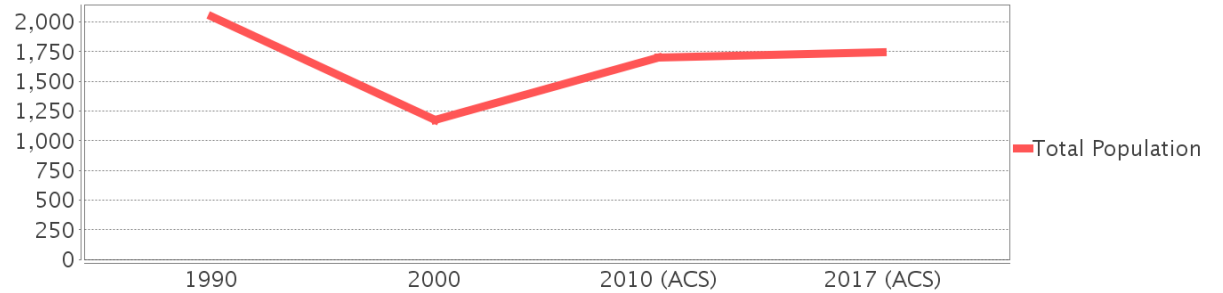
General Population Trends

Description	1990	2000	2010 (ACS)	2017 (ACS)
Total Population	2,045	1,172	1,701	1,742
Total Households	663	381	524	577
Average Persons per Acre	0.66	0.42	0.54	0.52
Average Persons per Household	2.83	2.67	3.00	2.60
Average Persons per Family	3.30	3.16	3.20	3.48
Males	1,003	612	837	830
Females	1,042	560	864	913

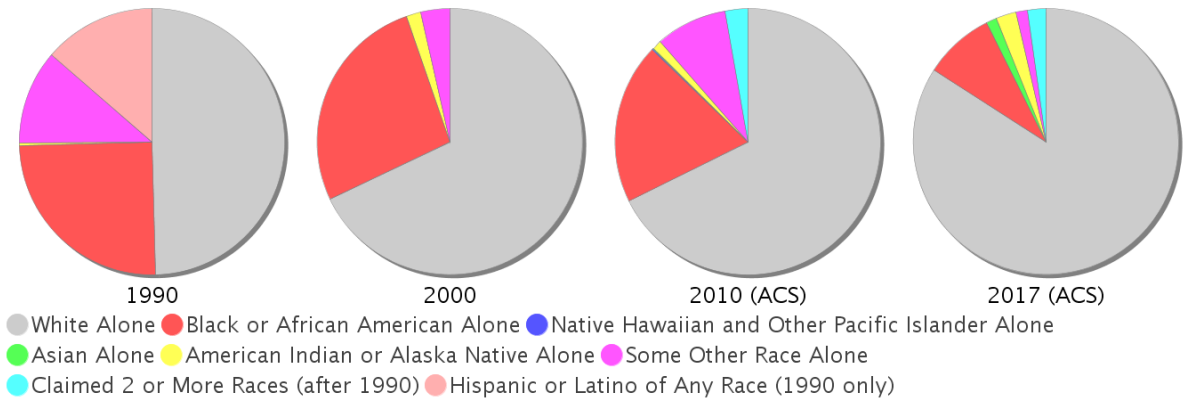
Race and Ethnicity Trends

Description	1990	2000	2010 (ACS)	2017 (ACS)
White Alone	1,175 (57.46%)	796 (67.92%)	1,150 (67.61%)	1,464 (84.04%)
Black or African American Alone	591 (28.90%)	314 (26.79%)	332 (19.52%)	150 (8.61%)
Native Hawaiian and Other Pacific Islander Alone	0 (0.00%)	0 (0.00%)	2 (0.12%)	0 (0.00%)
Asian Alone	0 (0.00%)	0 (0.00%)	2 (0.12%)	22 (1.26%)
American Indian or Alaska Native Alone	8 (0.39%)	20 (1.71%)	19 (1.12%)	43 (2.47%)
Some Other Race Alone	271 (13.25%)	42 (3.58%)	148 (8.70%)	24 (1.38%)
Claimed 2 or More Races	NA (NA)	0 (0.00%)	47 (2.76%)	39 (2.24%)
Hispanic or Latino of Any Race	324 (15.84%)	389 (33.19%)	669 (39.33%)	659 (37.83%)
Not Hispanic or Latino	1,721 (84.16%)	783 (66.81%)	1,032 (60.67%)	1,083 (62.17%)
Minority	918 (44.89%)	703 (59.98%)	1,028 (60.44%)	938 (53.85%)

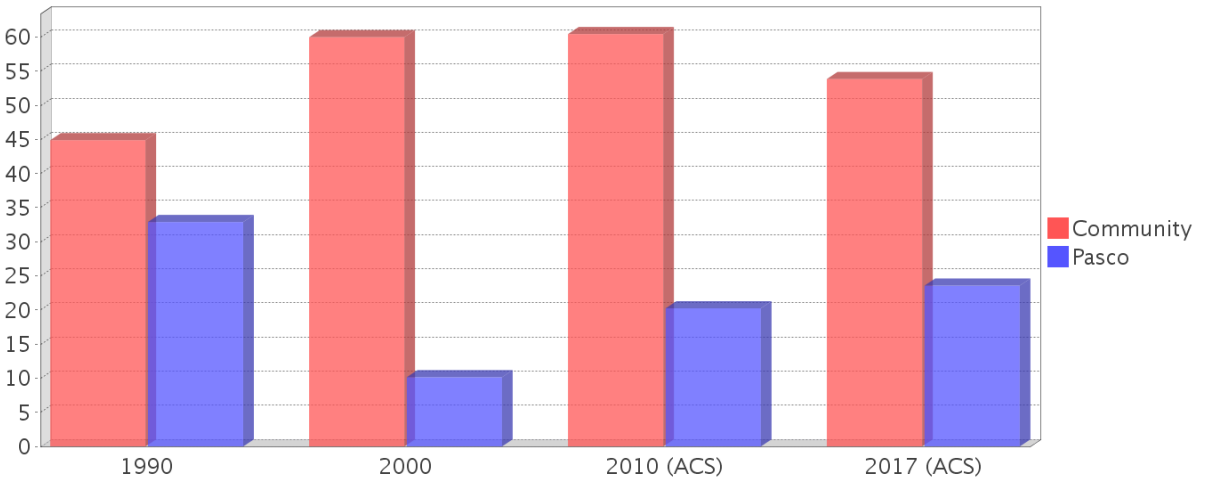
Population



Race



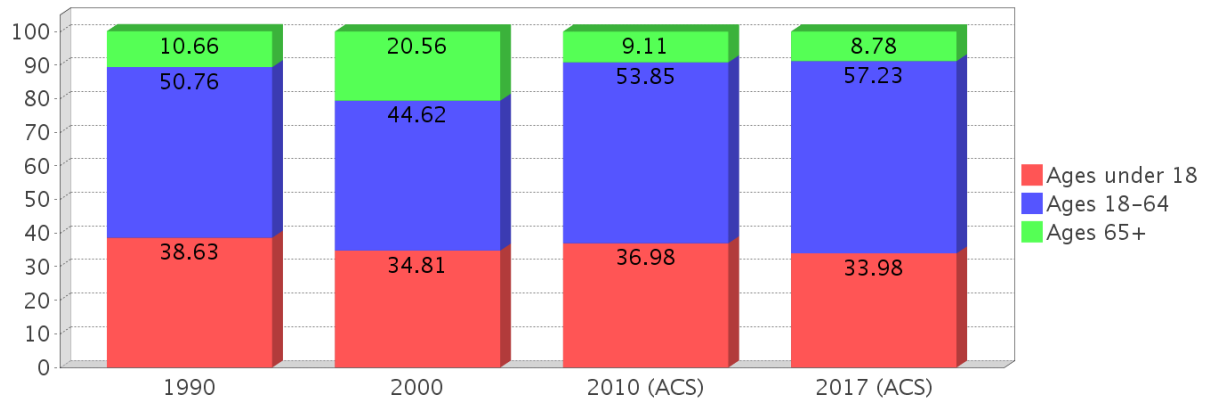
Minority Percentage Population



Age Trends

Description	1990	2000	2010 (ACS)	2017 (ACS)
Under Age 5	12.81%	11.95%	10.23%	13.09%
Ages 5-17	25.82%	22.87%	26.75%	20.90%
Ages 18-21	5.33%	4.44%	5.94%	4.94%
Ages 22-29	13.69%	8.70%	9.64%	17.45%
Ages 30-39	12.18%	16.98%	13.11%	4.76%
Ages 40-49	9.83%	10.24%	11.76%	21.64%
Ages 50-64	9.73%	4.27%	13.40%	8.44%
Age 65 and Over	10.66%	20.56%	9.11%	8.78%
-Ages 65-74	6.36%	10.07%	5.41%	3.90%
-Ages 75-84	3.67%	9.22%	3.00%	4.31%
-Age 85 and Over	0.64%	1.28%	0.71%	0.52%
Median Age	NA	35	37	40

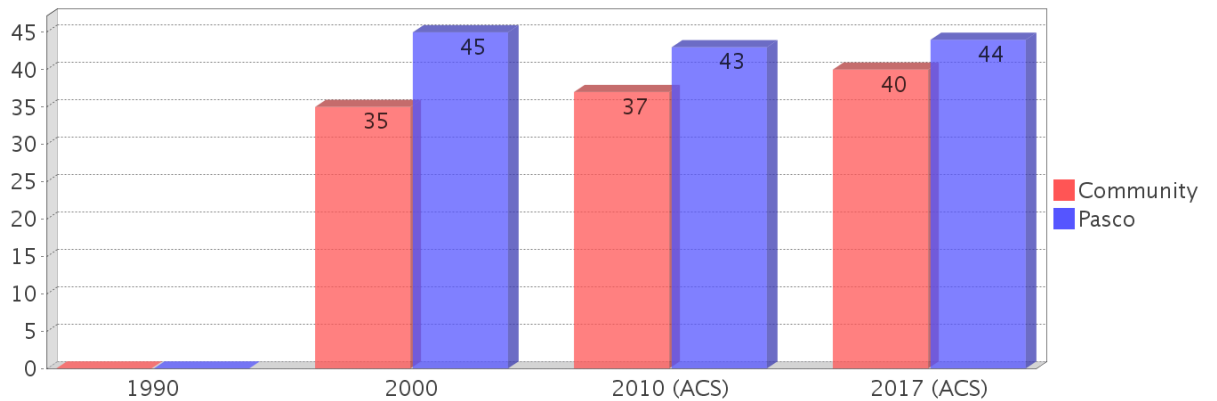
Percentage Population by Age Group



Income Trends

Description	1990	2000	2010 (ACS)	2017 (ACS)
Median Household Income	\$14,958	\$21,164	\$27,148	\$28,958
Median Family Income	\$23,202	\$22,692	\$31,251	\$36,477
Population below Poverty Level	40.34%	51.19%	38.57%	44.89%
Households below Poverty Level	37.41%	50.66%	25.19%	48.53%
Households with Public Assistance Income	24.74%	3.15%	0.00%	0.87%

Median Age Comparison

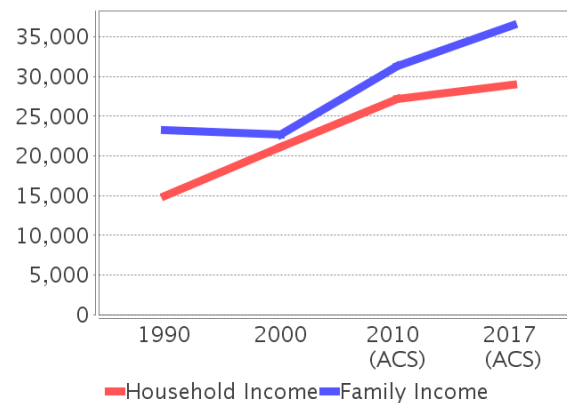


Disability Trends

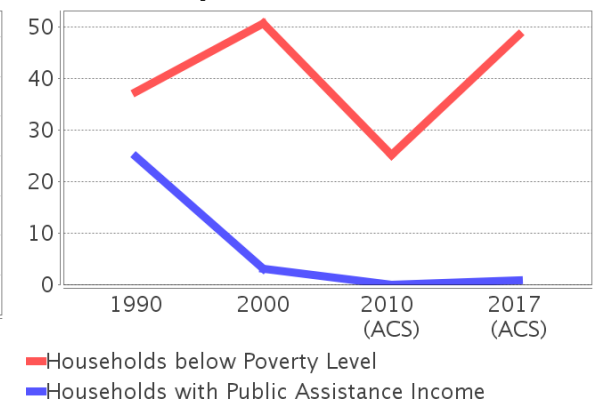
See the Data Sources section below for an explanation about the differences in disability data among the various years.

Description	1990	2000	2010 (ACS)	2017 (ACS)
Population 16 To 64 Years with a disability	175 (14.25%)	116 (11.24%)	(NA)	(NA)
Population 20 To 64 Years with a disability	(NA)	(NA)	(NA)	144 (15.65%)

Income Trends



Poverty and Public Assistance



Educational Attainment Trends

Age 25 and Over

Description	1990	2000	2010 (ACS)	2017 (ACS)
Less than 9th Grade	295 (29.80%)	224 (32.94%)	184 (20.91%)	117 (12.25%)
9th to 12th Grade, No Diploma	360 (36.36%)	176 (25.88%)	195 (22.16%)	150 (15.71%)
High School Graduate or Higher	335 (33.84%)	280 (41.18%)	501 (56.93%)	688 (72.04%)
Bachelor's Degree or Higher	23 (2.32%)	33 (4.85%)	182 (20.68%)	107 (11.20%)

Language Trends

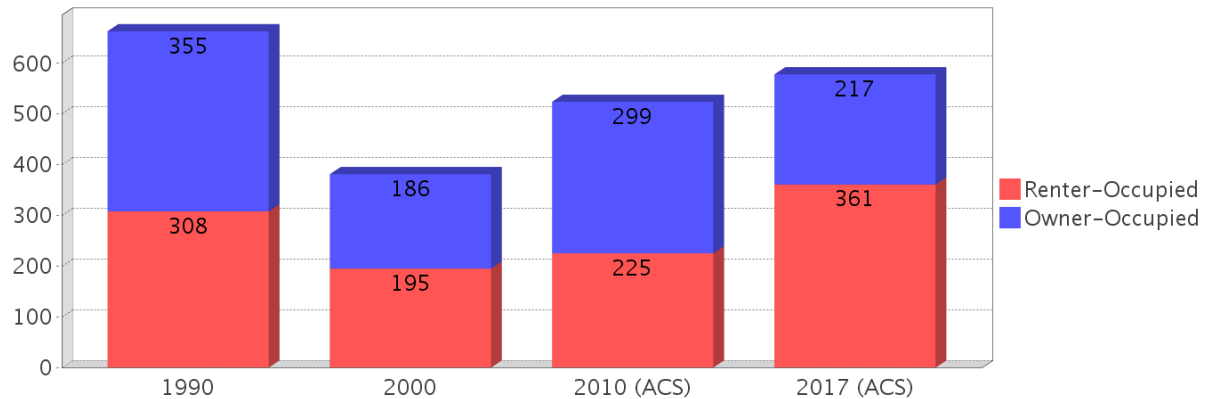
Age 5 and Over

Description	1990	2000	2010 (ACS)	2017 (ACS)
Speaks English Well	32 (1.93%)	40 (3.88%)	268 (14.11%)	40 (2.64%)
Speaks English Not Well	NA (NA)	82 (7.95%)	423 (22.27%)	71 (4.69%)
Speaks English Not at All	NA (NA)	63 (6.10%)	143 (7.53%)	0 (0.00%)
Speaks English Not Well or Not at All	66 (3.97%)	145 (14.05%)	566 (29.81%)	71 (4.69%)

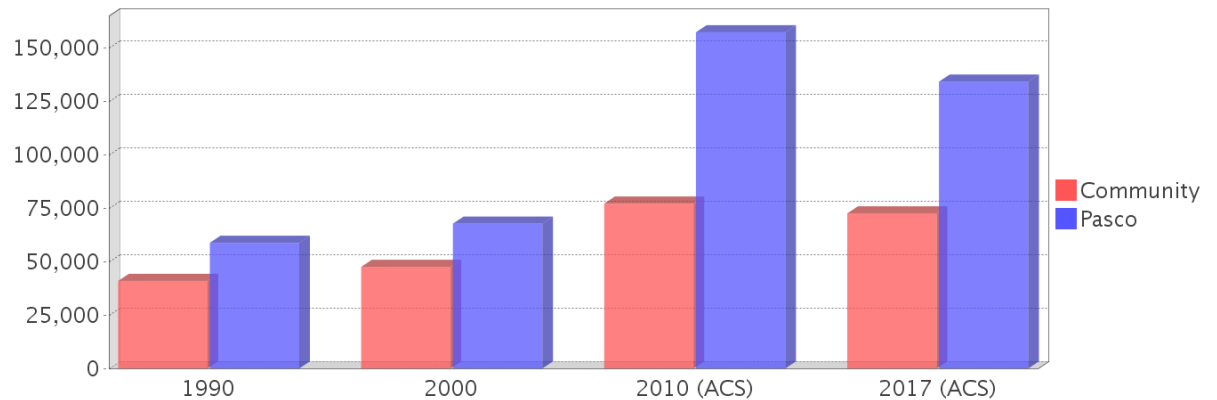
Housing Trends

Description	1990	2000	2010 (ACS)	2017 (ACS)
Total	749	421	625	694
Units per Acre	0.46	0.28	0.38	0.43
Single-Family Units	362	202	220	386
Multi-Family Units	135	127	153	178
Mobile Home Units	164	92	129	131
Owner-Occupied Units	355	186	299	217
Renter-Occupied Units	308	195	225	361
Vacant Units	86	40	101	117
Median Housing Value	\$41,000	\$47,550	\$77,150	\$72,600
Occupied Housing Units w/No Vehicle	118 (17.80%)	80 (21.00%)	39 (7.44%)	103 (17.85%)

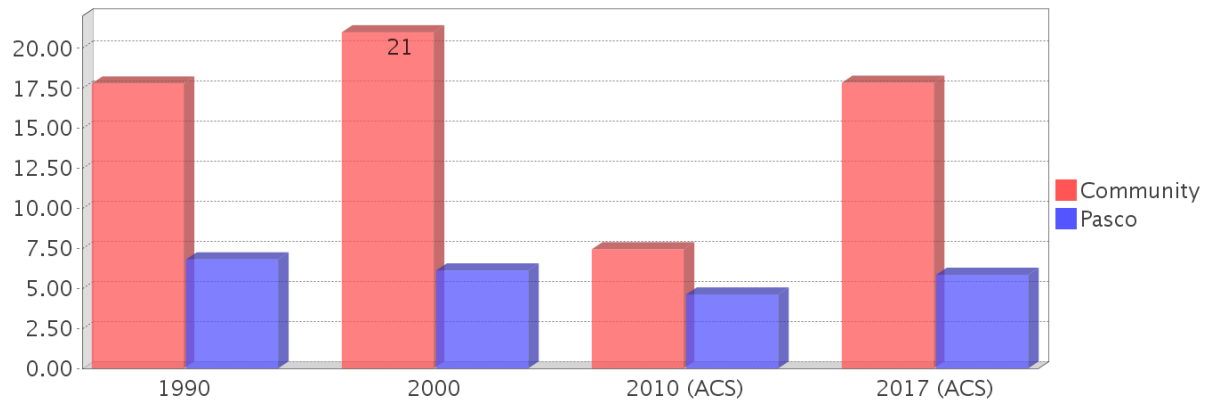
Housing Tenure



Median Housing Value Comparison

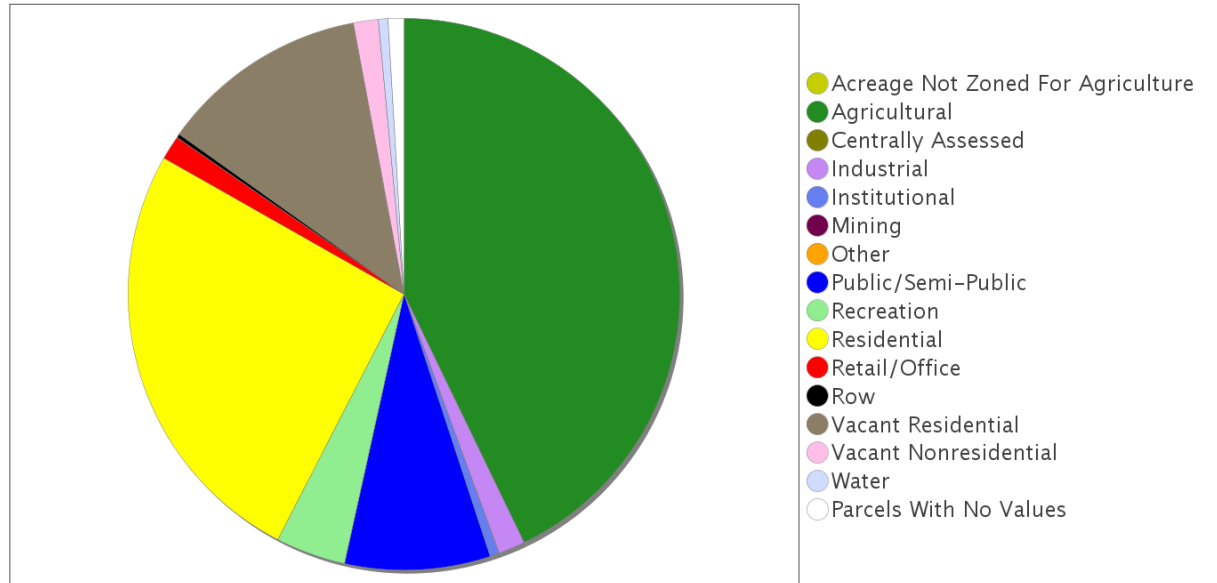


Occupied Units With No Vehicles Available

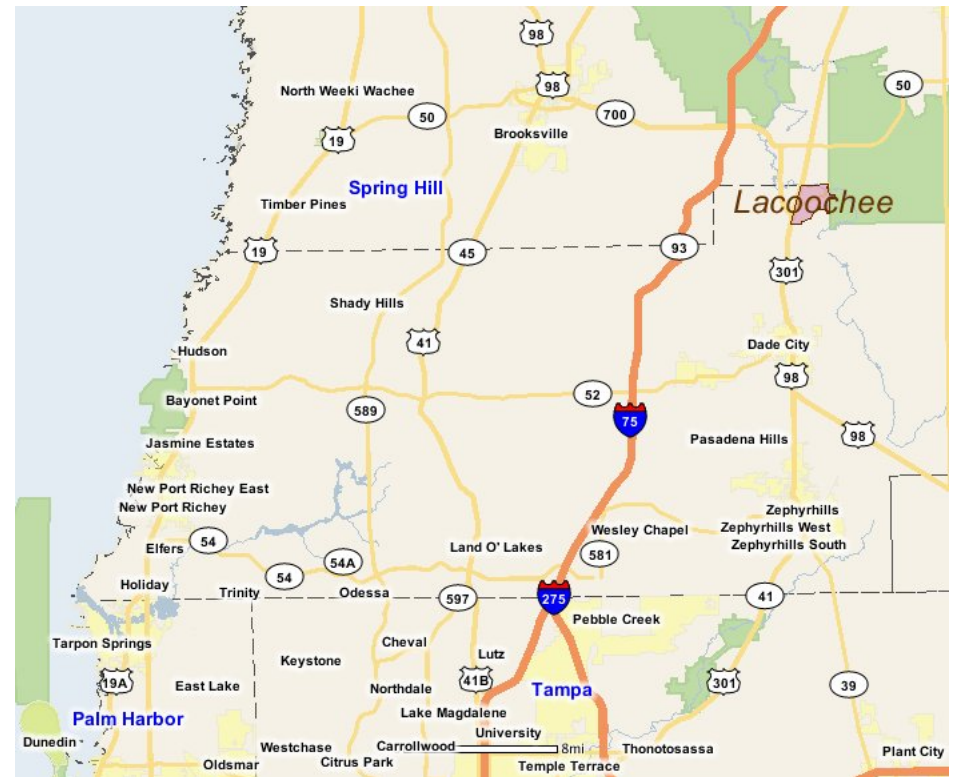
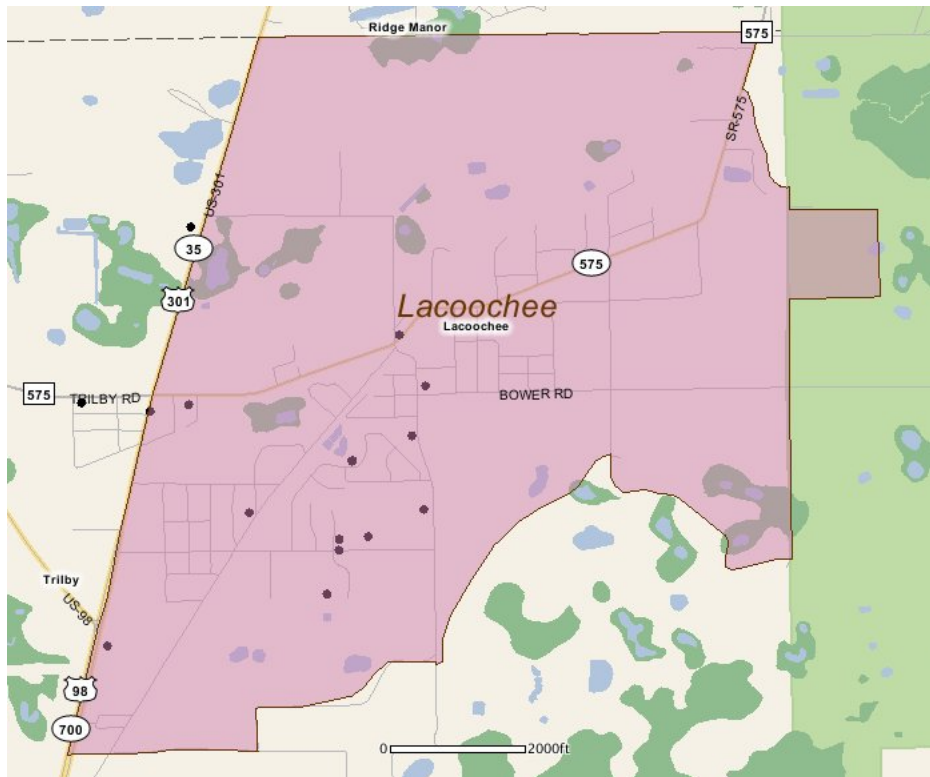


Existing Land Use

Land Use Type	Acres	Percentage
Acreage Not Zoned For Agriculture	<0.5	<0.03%
Agricultural	786	42.83%
Centrally Assessed	0	0.00%
Industrial	29	1.58%
Institutional	10	0.54%
Mining	0	0.00%
Other	0	0.00%
Public/Semi-Public	156	8.50%
Recreation	75	4.09%
Residential	471	25.67%
Retail/Office	26	1.42%
Row	4	0.22%
Vacant Residential	224	12.21%
Vacant Nonresidential	27	1.47%
Water	10	0.54%
Parcels With No Values	17	0.93%



Location Maps



Community Facilities

The community facilities information below is useful in a variety of ways for environmental evaluations. These community resources should be evaluated for potential sociocultural effects, such as accessibility and relocation potential. The facility types may indicate the types of population groups present in the project study area. Facility staff and leaders can be sources of community information such as who uses the facility and how it is used. Additionally, community facilities are potential public meeting venues.

Assisted Housing (Points)

Facility Name	Address	Zip Code
CYPRESS FARMS	38727 PATTI LN	335236751
CYPRESS MANOR	20641 EVERGREEN COURT	33525

Community Centers (Points)

Facility Name	Address	Zip Code
BOYS & GIRLS CLUB - PASCO COUNTY EAST UNIT	38749 PATTI LN	33523

Fire Stations (Points)

Facility Name	Address	Zip Code
PASCO COUNTY FIRE DEPARTMENT AND RESCUE STATION 34	38316 COUNTY ROAD 575	33523

Florida Parks and Recreational Facilities (Points)

Facility Name	Address	Zip Code
STANLEY PARK	38724 MUDCAT GRANT BLVD	33523

Government Building

Facility Name	Address	Zip Code
PASCO COUNTY HEALTH DEPARTMENT	38749 PATTIE LN	33525
U S POST OFFICE - LACOOCHEE	38915 STATE ROAD 575	33523

Public and Private Schools (Points)

Facility Name	Address	Zip Code
LACOOCHEE ELEMENTARY SCHOOL	38815 CUMMER RD	33523

Religious Centers (Points)

Facility Name	Address	Zip Code
MT MORIAH CHURCH	20641 BOWER ROAD	33523
TRI COMMUNITY FELLOWSHIP	20942 US HWY 301	33523
FIRST BAPTIST CHURCH	21012 BOWER RD	33523
TRILACOOCHEE CHURCH OF CHRIST	20300 US HIGHWAY 301	33523
IGLESIA PENTECOSTES LA PALOMA	20835 BOWER RD	33523
NEW BETHEL AFRICAN METHODIST EPISCOPAL CHURCH	20653 FLOYD ROAD	33523

US Census Places

Facility Name
Ridge Manor
Trilby
Lacoochee

Block Groups

The following Census Block Groups were used to calculate demographics for this report.

1990 Census Block Groups

121010324005, 120530001001, 121010324001, 121010324003, 121010324004

2000 Census Block Groups

121010324001, 121010324004, 121010324005, 121010324003, 120530401001

2010 Census Block Groups

121010324022, 121010324023, 120530401013, 121010324011, 121010324021

2017 Census Block Groups

121010324022, 121010324011, 120530401013, 121010324021, 121010324023

Data Sources

Area

The geographic area of the community based on a user-specified community boundary or area of interest (AOI) boundary.

Jurisdiction

Jurisdiction(s) includes local government boundaries that intersect the community or AOI boundary.

Demographic Data

Demographic data reported under the headings General Population Trends, Race and Ethnicity Trends, Age Trends, Income Trends, Educational Attainment Trends, Language Trends, and Housing Trends is from the U.S. Decennial Census (1990, 2000) and the American Community Survey (ACS) 5-year estimates from 2006-2010 and 2013-2017. The data was gathered at the block group level for user-specified community boundaries and AOIs, and at the county level for counties. Depending on the dataset, the data represents 100% counts (Census Summary File 1) or sample-based information (Census Summary File 3 or ACS).

About the Census Data:

User-specified community boundaries and AOIs do not always correspond precisely to block group boundaries. In these instances, adjustment of the geographic area and data for affected block groups is required to estimate the actual population. To improve the accuracy of such estimates in the SDR report, the census block group data was adjusted to exclude all census blocks with a population of two or fewer. These areas were eliminated from the corresponding years' block groups. Next, the portion of the block group that lies outside of the community or AOI boundary was removed. The demographics within each block group were then recalculated, assuming an equal area distribution of the population. Note that there may be areas where there is no population.

Use caution when comparing the 100% count data (Decennial Census) to the sample-based data (ACS). In any given year, about one in 40 or 2.5% of U.S. households will receive the ACS questionnaire. Over any five-year period, about one in eight households will receive the questionnaire, as compared to about one in six that received the long form questionnaire for the Decennial Census 2000. (Source: <http://mcdc.missouri.edu/pub/data/acs/Readme.shtml>) The U.S. Census Bureau provides help with this process:

<https://www.census.gov/programs-surveys/acs/guidance/comparing-acs-data/2017.html>

Use caution when interpreting changes in Race and Ethnicity over time. Starting with the 2000 Decennial Census, respondents were given a new option of selecting one or more race categories. Also in 2000, the placement of the question about Hispanic origin changed, helping to increase responsiveness to the Hispanic-origin question. Because of these and other changes, the 1990 data on race and ethnicity are not directly comparable with data from later censuses. (Source: <http://www.census.gov/prod/2001pubs/c2kbr01-1.pdf>; <http://www.census.gov/pred/www/rpts/Race%20and%20Ethnicity%20FINAL%20report.pdf>)

The "Minority" calculations are derived from Census and ACS data using both the race and ethnicity responses. On this report, "Minority" refers to individuals who list a race other than White and/or list their ethnicity as Hispanic/Latino. In other words, people who are multi-racial, any single race other than White, or Hispanic/Latino of any race are considered minorities.

Disability data is not included in the 2010 Decennial Census, or the 2006-2010 ACS. This data is available in the 2013-2017 ACS.

Because of changes made to the Census and ACS questions between 1990 and 2017, disability variables should not be compared from year to year. For example: 1) With the 1990 data the disabilities are listed as a "work disability" while this distinction is not made with 2000 or 2017 ACS data; 2) The 2017 ACS data includes the institutionalized population (e.g. persons in prisons and group homes), while this population is not included in 1990 or 2000; 3) the age groupings changed over the years.

Please take the following two concerns into account when viewing this data: 1) With the 1990 data the disabilities are listed as a "work disability" while this distinction is not made with 2000 or 2017 ACS data; 2) The 2017 ACS data includes the institutionalized population (e.g. persons in prisons and group homes), while this population is not included in 1990 or 2000.

The category Bachelor's Degree or Higher under the heading Educational Attainment Trends is a subset of the category High School Graduate or Higher.

Income of households. This includes the income of the householder and all other individuals 15 years old and over in the household, whether they are related to the householder or not. Because many households consist of only one person, average household income is usually less than average family income.

Income of families. In compiling statistics on family income, the incomes of all members 15 years old and over related to the householder are summed and treated as a single amount.

Age Trends median age for 1990 is not available.

Land Use Data

The Land Use information Indicates acreages and percentages for the generalized land use types used to group parcel-specific, existing land use assigned by the county property appraiser office according to the Florida Department of Revenue land use codes.

Community Facilities Data

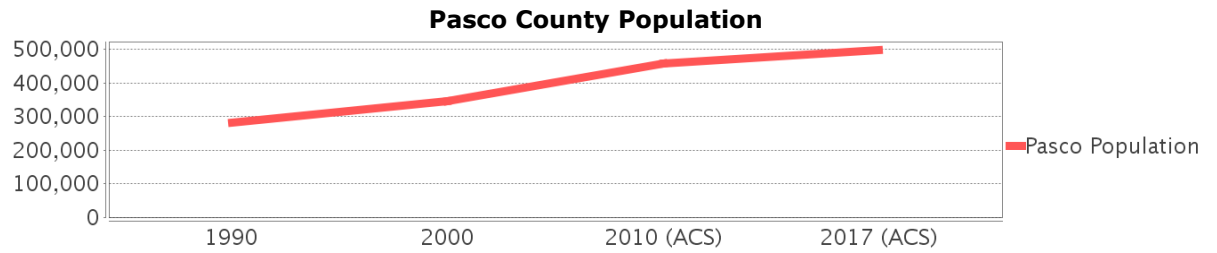
- Assisted Rental Housing Units - Identifies multifamily rental developments that receive funding assistance under federal, state, and local government programs to offer affordable housing as reported by the Shimberg Center for Housing Studies, University of Florida.
- Mobile Home Parks - Identifies approved or acknowledged mobile home parks reported by the Florida Department of Business and Professional Regulation and Florida Department of Health.
- Migrant Camps - Identifies migrant labor camp facilities inspected by the Florida Department of Health.
- Group Care Facilities - Identifies group care facilities inspected by the Florida Department of Health.

- Community Center and Fraternal Association Facilities - Identifies facilities reported by multiple sources.
- Law Enforcement Correctional Facilities - Identifies facilities reported by multiple sources.
- Cultural Centers - Identifies cultural centers including organizations, buildings, or complexes that promote culture and arts (e.g., aquariums and zoological facilities; arboreta and botanical gardens; dinner theaters; drive-ins; historical places and services; libraries; motion picture theaters; museums and art galleries; performing arts centers; performing arts theaters; planetariums; studios and art galleries; and theater producers stage facilities) reported by multiple sources.
- Fire Department and Rescue Station Facilities - Identifies facilities reported by multiple sources.
- Government Buildings - Identifies local, state, and federal government buildings reported by multiple sources.
- Health Care Facilities - Identifies health care facilities including abortion clinics, dialysis clinics, medical doctors, nursing homes, osteopaths, state laboratories/clinics, and surgicenters/walk-in clinics reported by the Florida Department of Health.
- Hospital Facilities - Identifies hospital facilities reported by multiple sources.
- Law Enforcement Facilities - Identifies law enforcement facilities reported by multiple sources.
- Parks and Recreational Facilities - Identifies parks and recreational facilities reported by multiple sources.
- Religious Center Facilities - Identifies religious centers including churches, temples, synagogues, mosques, chapels, centers, and other types of religious facilities reported by multiple sources.
- Private and Public Schools - Identifies private and public schools reported by multiple sources.
- Social Service Centers - Identifies social service centers reported by multiple sources.
- Veteran Organizations and Facilities

Pasco County Demographic Profile

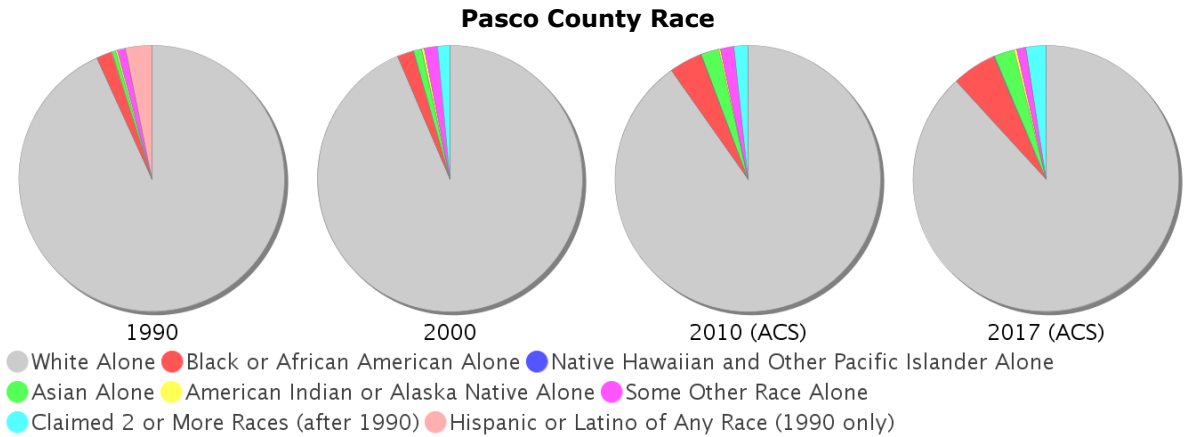
General Population Trends - Pasco

Description	1990	2000	2010 (ACS)	2017 (ACS)
Total Population	281,131	344,765	456,514	498,136
Total Households	121,674	147,566	184,813	195,818
Average Persons per Acre	0.575	0.704	0.933	1.017
Average Persons per Household	2.311	2.298	2.00	2.51
Average Persons per Family	2.722	2.831	3.037	3.137
Males	133,220	165,332	221,933	242,448
Females	147,911	179,433	234,581	255,688



Race and Ethnicity Trends - Pasco

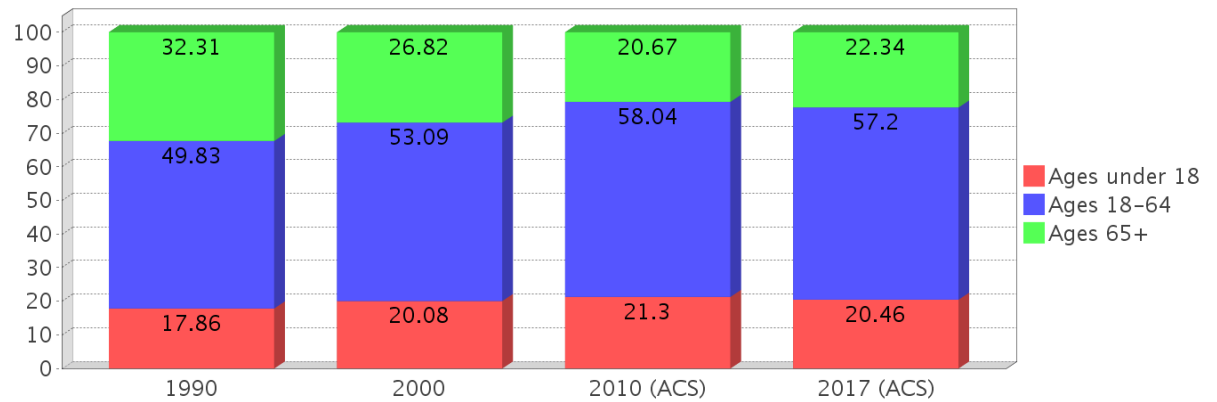
Description	1990	2000	2010 (ACS)	2017 (ACS)
White Alone	270,658 (96.27%)	322,607 (93.57%)	411,709 (90.19%)	439,087 (88.15%)
Black or African American Alone	5,457 (1.94%)	6,770 (1.96%)	18,549 (4.06%)	26,932 (5.41%)
Native Hawaiian and Other Pacific Islander Alone	(NA)	100 (0.03%)	158 (0.03%)	338 (0.07%)
Asian Alone	1,429 (0.51%)	3,489 (1.01%)	9,749 (2.14%)	12,264 (2.46%)
American Indian or Alaska Native Alone	784 (0.28%)	1,051 (0.30%)	1,187 (0.26%)	1,789 (0.36%)
Some Other Race Alone	2,752 (0.98%)	5,468 (1.59%)	7,406 (1.62%)	5,690 (1.14%)
Claimed 2 or More Races	(NA)	5,280 (1.53%)	7,756 (1.70%)	12,036 (2.42%)
Hispanic or Latino of Any Race	9,309 (3.31%)	19,555 (5.67%)	49,360 (10.81%)	69,864 (14.03%)
Not Hispanic or Latino	271,822 (96.69%)	325,210 (94.33%)	407,154 (89.19%)	428,272 (85.97%)
Minority	92,458 (32.89%)	34,956 (10.14%)	92,458 (20.25%)	117,435 (23.57%)



Age Trends - Pasco

Description	1990	2000	2010 (ACS)	2017 (ACS)
Under Age 5	5.16%	5.19%	5.62%	5.19%
Ages 5-17	12.70%	14.90%	15.67%	15.27%
Ages 18-21	3.87%	3.58%	4.27%	4.16%
Ages 22-29	8.55%	6.86%	7.81%	8.27%
Ages 30-39	11.69%	12.85%	11.83%	11.35%
Ages 40-49	9.86%	12.92%	14.65%	13.10%
Ages 50-64	15.86%	16.88%	19.47%	20.31%
Age 65 and Over	32.31%	26.82%	20.67%	22.34%
-Ages 65-74	18.95%	13.02%	10.64%	12.39%
-Ages 75-84	11.02%	10.72%	7.36%	7.12%
-Age 85 and Over	2.34%	3.09%	2.67%	2.83%
Median Age	NA	45	43	44

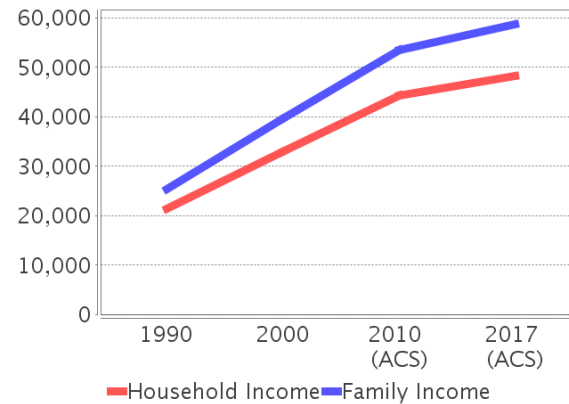
Percentage Population by Age Group - Pasco



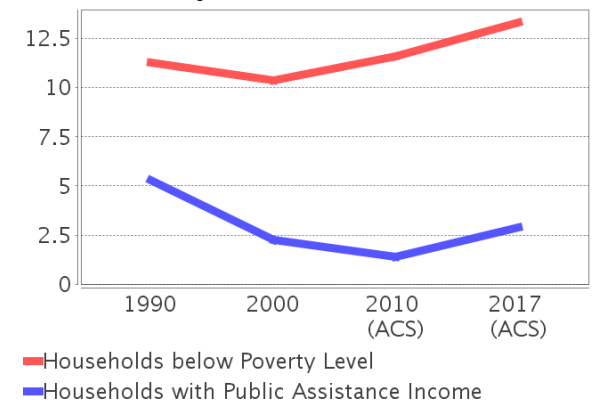
Income Trends - Pasco

Description	1990	2000	2010 (ACS)	2017 (ACS)
Median Household Income	\$21,480	\$32,969	\$44,228	\$48,289
Median Family Income	\$25,435	\$39,568	\$53,457	\$58,751
Population below Poverty Level	11.59%	10.67%	12.28%	13.56%
Households below Poverty Level	11.26%	10.37%	11.57%	13.30%
Households with Public Assistance Income	5.29%	2.24%	1.39%	2.89%

Income Trends



Poverty and Public Assistance



Disability Trends - Pasco

See the Data Sources section below for an explanation about the differences in disability data among the various years.

Description	1990	2000	2010 (ACS)	2017 (ACS)
Population 16 To 64 Years with a disability	18,025 (7.75%)	48,652 (15.06%)	NA (NA)	NA (NA)
Population 20 To 64 Years with a disability	NA (NA)	NA (NA)	NA (NA)	36,244 (13.35%)

Educational Attainment Trends - Pasco

Age 25 and Over

Description	1990	2000	2010 (ACS)	2017 (ACS)
Less than 9th Grade	22,484 (10.58%)	15,195 (5.95%)	12,990 (3.96%)	12,301 (3.41%)
9th to 12th Grade, No Diploma	47,974 (22.56%)	42,102 (16.48%)	32,648 (9.96%)	28,459 (7.89%)
High School Graduate or Higher	142,154 (66.86%)	198,175 (77.57%)	282,048 (86.07%)	319,804 (88.70%)
Bachelor's Degree or Higher	19,248 (9.05%)	33,548 (13.13%)	65,463 (19.98%)	81,795 (22.69%)

Language Trends - Pasco

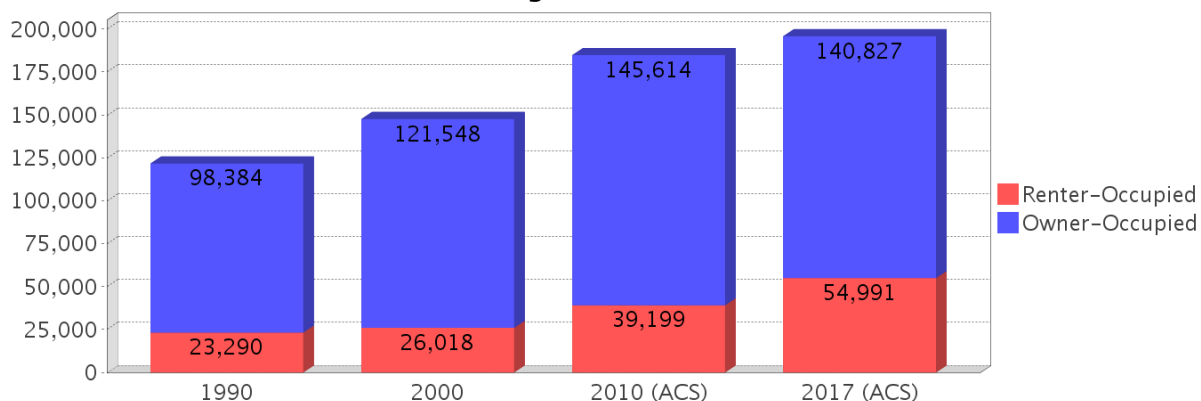
Age 5 and Over

Description	1990	2000	2010 (ACS)	2017 (ACS)
Speaks English Well	4,548 (1.71%)	6,654 (2.04%)	10,398 (2.41%)	9,735 (2.06%)
Speaks English Not Well	NA (NA)	3,903 (1.19%)	6,737 (1.56%)	6,658 (1.41%)
Speaks English Not at All	NA (NA)	1,090 (0.33%)	2,403 (0.56%)	2,485 (0.53%)
Speaks English Not Well or Not at All	2,384 (0.89%)	4,993 (1.53%)	9,140 (2.12%)	9,143 (1.94%)

Housing Trends - Pasco

Description	1990	2000	2010 (ACS)	2017 (ACS)
Total	148,965	173,717	224,432	237,481
Units per Acre	0.304	0.355	0.458	0.485
Single-Family Units	78,855	109,251	152,353	159,462
Multi-Family Units	13,177	18,561	24,383	31,574
Mobile Home Units	28,895	43,700	46,784	45,736
Owner-Occupied Units	98,384	121,548	145,614	140,827
Renter-Occupied Units	23,290	26,018	39,199	54,991
Vacant Units	27,291	26,151	39,619	41,663
Median Housing Value	\$58,800	\$67,800	\$157,400	\$134,300
Occupied Housing Units w/No Vehicle	8,291 (6.81%)	9,037 (6.12%)	8,545 (4.62%)	11,463 (5.85%)

Housing Tenure - Pasco



County Data Sources

Demographic data reported is from the U.S. Decennial Census (1990, 2000) and the American Community Survey (ACS) 5-year estimates from 2006-2010 and 2013-2017. The data was gathered at the county level. Depending on the dataset, the data represents 100% counts (Census Summary File 1) or sample-based information (Census Summary File 3 or ACS).

About the Census Data:

Use caution when comparing the 100% count data (Decennial Census) to the sample-based data (ACS). In any given year, about one in 40 or 2.5% of U.S. households will receive the ACS questionnaire. Over any five-year period, about one in eight households will receive the questionnaire, as compared to about one in six that received the long form questionnaire for the Decennial Census 2000. (Source: <http://mcdc.missouri.edu/pub/data/acs/Readme.shtml>) The U.S. Census Bureau provides help with this process:

<https://www.census.gov/programs-surveys/acs/guidance/comparing-acs-data/2017.html>

Use caution when interpreting changes in Race and Ethnicity over time. Starting with the 2000 Decennial Census, respondents were given a new option of selecting one or more race categories. Also in 2000, the placement of the question about Hispanic origin changed, helping to increase responsiveness to the Hispanic-origin question. Because of these and other changes, the 1990 data on race and ethnicity are not directly comparable with data from later censuses. (Source: <http://www.census.gov/prod/2001pubs/c2kbr01-1.pdf>; <http://www.census.gov/pred/www/rpts/Race%20and%20Ethnicity%20FINAL%20report.pdf>)

The "Minority" calculations are derived from Census and ACS data using both the race and ethnicity responses. On this report, "Minority" refers to individuals who list a race other than White and/or list their ethnicity as Hispanic/Latino. In other words, people who are multi-racial, any single race other than White, or Hispanic/Latino of any race are considered minorities.

Disability data is not included in the 2010 Decennial Census, or the 2006-2010 ACS. This data is available in the 2013-2017 ACS.

Because of changes made to the Census and ACS questions between 1990 and 2017, disability variables should not be compared from year to year. For example: 1) With the 1990 data the disabilities are listed as a "work disability" while this distinction is not made with 2000 or 2017 ACS data; 2) The 2017 ACS data includes the institutionalized population (e.g. persons in prisons and group homes), while this population is not included in 1990 or 2000; 3) the age groupings changed over the years.

Please take the following two concerns into account when viewing this data: 1) With the 1990 data the disabilities are listed as a "work disability" while this distinction is not made with 2000 or 2017 ACS data; 2) The 2017 ACS data includes the institutionalized population (e.g. persons in prisons and group homes), while this population is not included in 1990 or 2000.

source:

<https://www.census.gov/people/disability/methodology/acs.html>

<https://www.census.gov/population/www/cen2000/90vs00/index.html>

The category Bachelor's Degree or Higher under the heading Educational Attainment Trends is a subset of the category High School Graduate or Higher.

Metadata

- Community and Fraternal Centers https://etdmpub.florida-etat.org/metadata/gc_communitycenter.htm
- Correctional Facilities in Florida https://etdmpub.florida-etat.org/metadata/gc_correctional.htm
- Cultural Centers in Florida https://etdmpub.florida-etat.org/metadata/gc_culturecenter.htm
- Fire Department and Rescue Station Facilities in Florida https://etdmpub.florida-etat.org/metadata/gc_firestat.htm
- Local, State, and Federal Government Buildings in Florida https://etdmpub.florida-etat.org/metadata/gc_govbuild.htm
- Florida Health Care Facilities https://etdmpub.florida-etat.org/metadata/gc_health.htm
- Hospital Facilities in Florida https://etdmpub.florida-etat.org/metadata/gc_hospitals.htm
- Law Enforcement Facilities in Florida https://etdmpub.florida-etat.org/metadata/gc_lawenforce.htm
- Florida Parks and Recreational Facilities https://etdmpub.florida-etat.org/metadata/gc_parks.htm
- Religious Centers https://etdmpub.florida-etat.org/metadata/gc_religion.htm
- Florida Public and Private Schools https://etdmpub.florida-etat.org/metadata/gc_schools.htm
- Social Service Centers https://etdmpub.florida-etat.org/metadata/gc_socialservice.htm
- Assisted Rental Housing Units in Florida https://etdmpub.florida-etat.org/metadata/gc_assisted_housing.htm
- Group Care Facilities <https://etdmpub.florida-etat.org/metadata/groupcare.htm>
- Mobile Home Parks in Florida https://etdmpub.florida-etat.org/metadata/gc_mobilehomes.htm
- Migrant Camps in Florida <https://etdmpub.florida-etat.org/metadata/migrant.htm>
- Veteran Organizations and Facilities https://etdmpub.florida-etat.org/metadata/gc_veterans.htm
- Generalized Land Use - Florida DOT District 7 https://etdmpub.florida-etat.org/metadata/d7_lu_gen.htm
- Census Block Groups in Florida https://etdmpub.florida-etat.org/metadata/e2_cenacs_cci.htm
- 1990 Census Block Groups in Florida https://etdmpub.florida-etat.org/metadata/e2_cenblkgrp_1990_cci.htm
- 2000 Census Block Groups in Florida https://etdmpub.florida-etat.org/metadata/e2_cenblkgrp_2000_cci.htm
- 2010 Census Block Groups in Florida https://etdmpub.florida-etat.org/metadata/e2_cenblkgrp_2010_cci.htm