

# Sociocultural Data Report

## Lemon Grove

**Area:** 29.845 square miles  
**Jurisdiction(s):** Cities: NA  
 Counties: Hardee

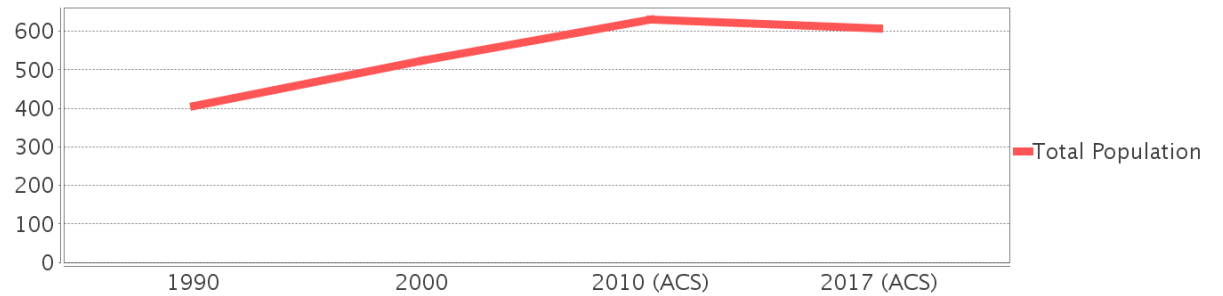
## General Population Trends

Description	1990	2000	2010 (ACS)	2017 (ACS)
Total Population	405	525	630	608
Total Households	133	183	215	200
Average Persons per Acre	0.02	0.04	0.06	0.07
Average Persons per Household	3.04	3.12	3.00	3.28
Average Persons per Family	3.34	3.58	3.33	3.91
Males	202	247	324	326
Females	203	279	306	282

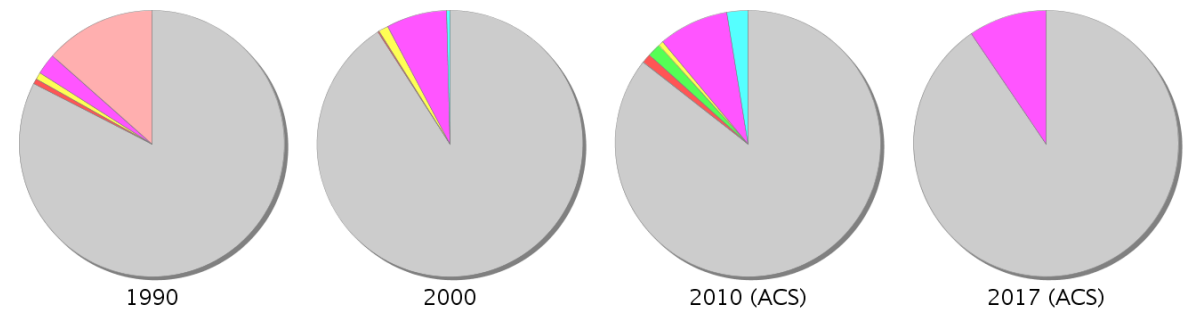
## Race and Ethnicity Trends

Description	1990	2000	2010 (ACS)	2017 (ACS)
White Alone	386 (95.31%)	477 (90.86%)	539 (85.56%)	550 (90.46%)
Black or African American Alone	3 (0.74%)	1 (0.19%)	7 (1.11%)	0 (0.00%)
Native Hawaiian and Other Pacific Islander Alone	0 (0.00%)	0 (0.00%)	0 (0.00%)	0 (0.00%)
Asian Alone	0 (0.00%)	0 (0.00%)	10 (1.59%)	0 (0.00%)
American Indian or Alaska Native Alone	4 (0.99%)	6 (1.14%)	4 (0.63%)	0 (0.00%)
Some Other Race Alone	12 (2.96%)	39 (7.43%)	54 (8.57%)	58 (9.54%)
Claimed 2 or More Races	NA (NA)	2 (0.38%)	16 (2.54%)	0 (0.00%)
Hispanic or Latino of Any Race	63 (15.56%)	134 (25.52%)	144 (22.86%)	203 (33.39%)
Not Hispanic or Latino	342 (84.44%)	391 (74.48%)	486 (77.14%)	405 (66.61%)
Minority	69 (17.04%)	138 (26.29%)	174 (27.62%)	203 (33.39%)

## Population

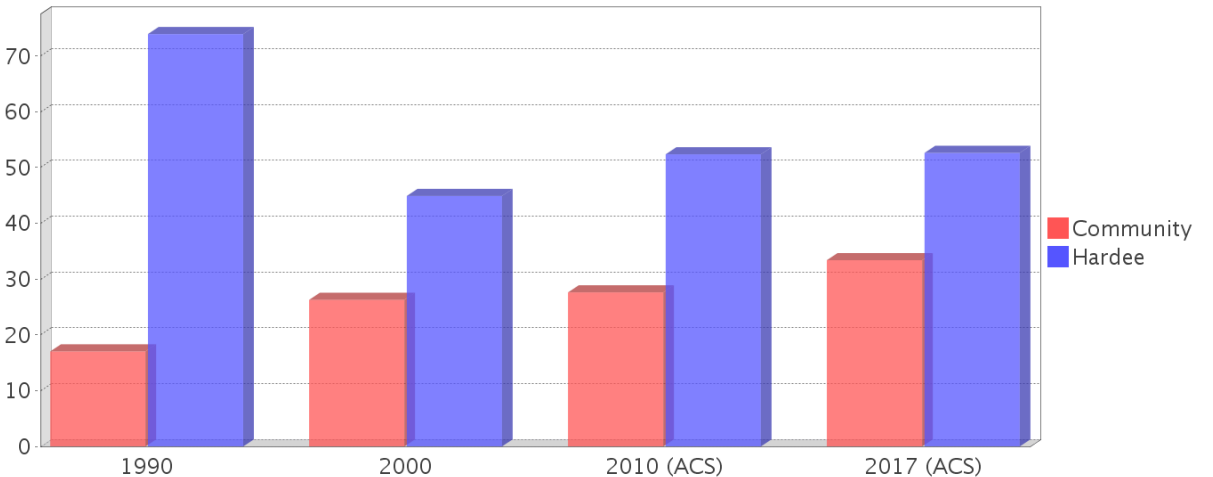


## Race



Legend for Race Pie Charts:  
 ● White Alone ● Black or African American Alone ● Native Hawaiian and Other Pacific Islander Alone  
 ● Asian Alone ● American Indian or Alaska Native Alone ● Some Other Race Alone  
 ● Claimed 2 or More Races (after 1990) ● Hispanic or Latino of Any Race (1990 only)

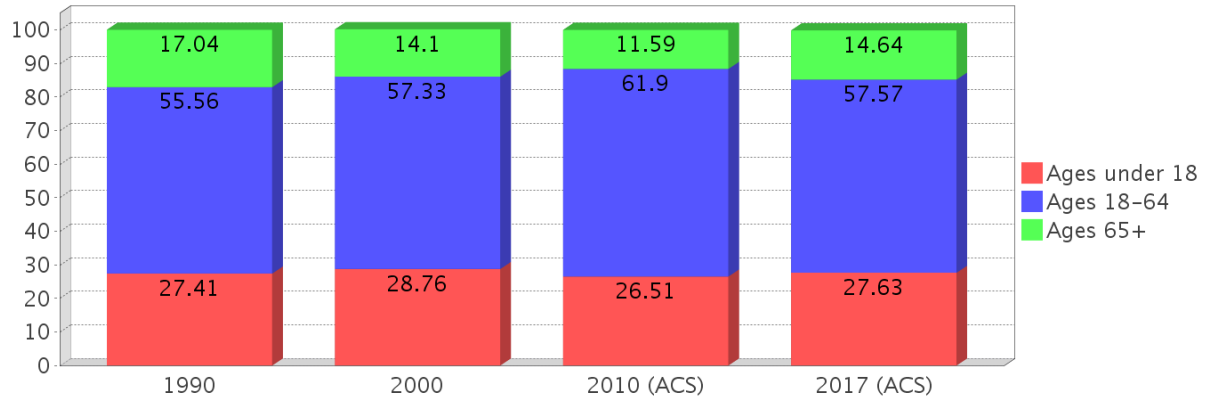
## Minority Percentage Population



### Age Trends

Description	1990	2000	2010 (ACS)	2017 (ACS)
Under Age 5	6.42%	6.10%	7.94%	10.86%
Ages 5-17	20.99%	22.67%	18.57%	16.78%
Ages 18-21	5.19%	8.38%	5.24%	5.76%
Ages 22-29	9.38%	7.05%	10.00%	13.82%
Ages 30-39	14.81%	18.29%	11.59%	7.73%
Ages 40-49	10.86%	11.62%	15.24%	13.65%
Ages 50-64	15.31%	12.00%	19.84%	16.61%
Age 65 and Over	17.04%	14.10%	11.59%	14.64%
-Ages 65-74	10.86%	6.29%	7.30%	10.36%
-Ages 75-84	5.43%	4.76%	3.02%	2.96%
-Age 85 and Over	0.74%	3.24%	1.43%	1.48%
Median Age	NA	30	32	32

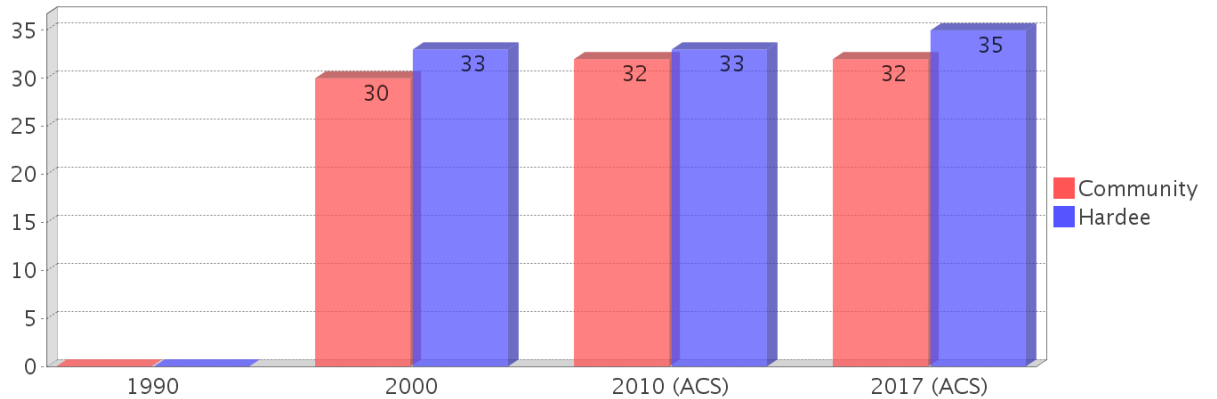
Percentage Population by Age Group



### Income Trends

Description	1990	2000	2010 (ACS)	2017 (ACS)
Median Household Income	\$21,948	\$30,000	\$37,694	\$38,917
Median Family Income	\$23,974	\$34,338	\$36,724	\$43,333
Population below Poverty Level	27.90%	9.52%	4.29%	37.34%
Households below Poverty Level	15.79%	10.38%	1.40%	26.00%
Households with Public Assistance Income	0.00%	5.46%	0.00%	1.00%

Median Age Comparison

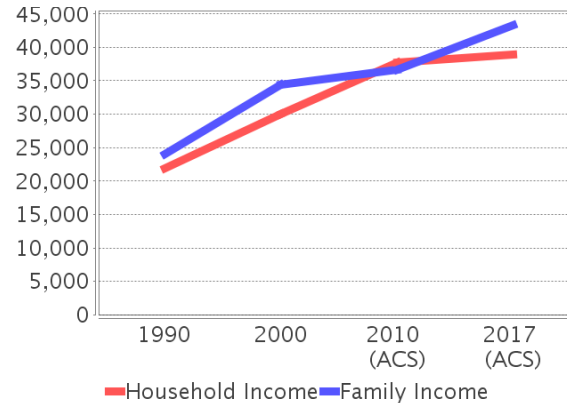


### Disability Trends

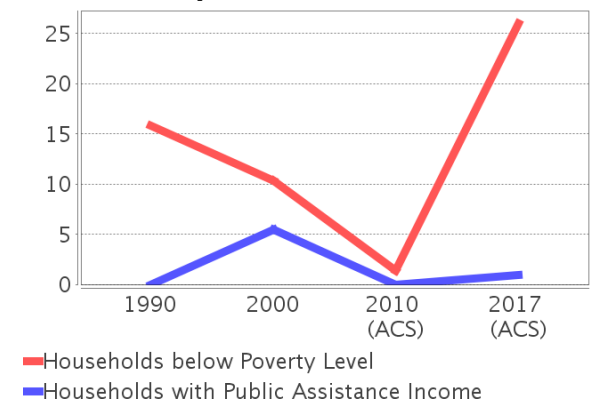
See the Data Sources section below for an explanation about the differences in disability data among the various years.

Description	1990	2000	2010 (ACS)	2017 (ACS)
Population 16 To 64 Years with a disability	28 (9.62%)	70 (14.20%)	(NA)	(NA)
Population 20 To 64 Years with a disability	(NA)	(NA)	(NA)	36 (10.88%)

Income Trends



Poverty and Public Assistance



## Educational Attainment Trends

Age 25 and Over

Description	1990	2000	2010 (ACS)	2017 (ACS)
Less than 9th Grade	54 (20.77%)	46 (14.42%)	43 (11.14%)	31 (8.47%)
9th to 12th Grade, No Diploma	42 (16.15%)	59 (18.50%)	53 (13.73%)	42 (11.48%)
High School Graduate or Higher	164 (63.08%)	214 (67.08%)	290 (75.13%)	293 (80.05%)
Bachelor's Degree or Higher	8 (3.08%)	15 (4.70%)	50 (12.95%)	24 (6.56%)

## Language Trends

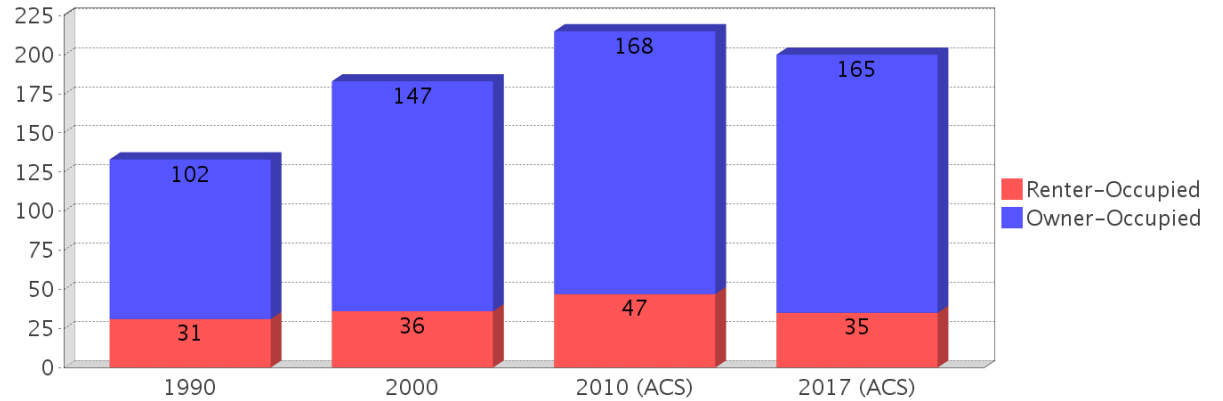
Age 5 and Over

Description	1990	2000	2010 (ACS)	2017 (ACS)
Speaks English Well	21 (5.07%)	12 (2.43%)	30 (5.31%)	44 (8.13%)
Speaks English Not Well	NA (NA)	14 (2.84%)	11 (1.95%)	4 (0.74%)
Speaks English Not at All	NA (NA)	12 (2.43%)	0 (0.00%)	0 (0.00%)
Speaks English Not Well or Not at All	32 (7.73%)	26 (5.27%)	11 (1.95%)	4 (0.74%)

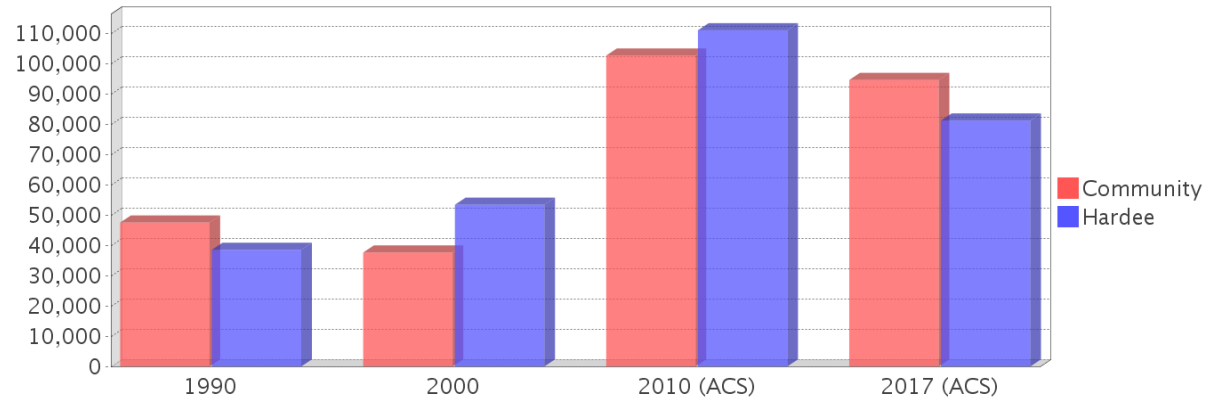
## Housing Trends

Description	1990	2000	2010 (ACS)	2017 (ACS)
Total	158	213	252	246
Units per Acre	0.01	0.01	0.01	0.01
Single-Family Units	77	106	141	139
Multi-Family Units	0	3	2	1
Mobile Home Units	56	104	99	106
Owner-Occupied Units	102	147	168	165
Renter-Occupied Units	31	36	47	35
Vacant Units	25	31	37	46
Median Housing Value	\$47,500	\$37,600	\$102,650	\$94,600
Occupied Housing Units w/No Vehicle	6 (4.51%)	9 (4.95%)	0 (0.00%)	2 (1.00%)

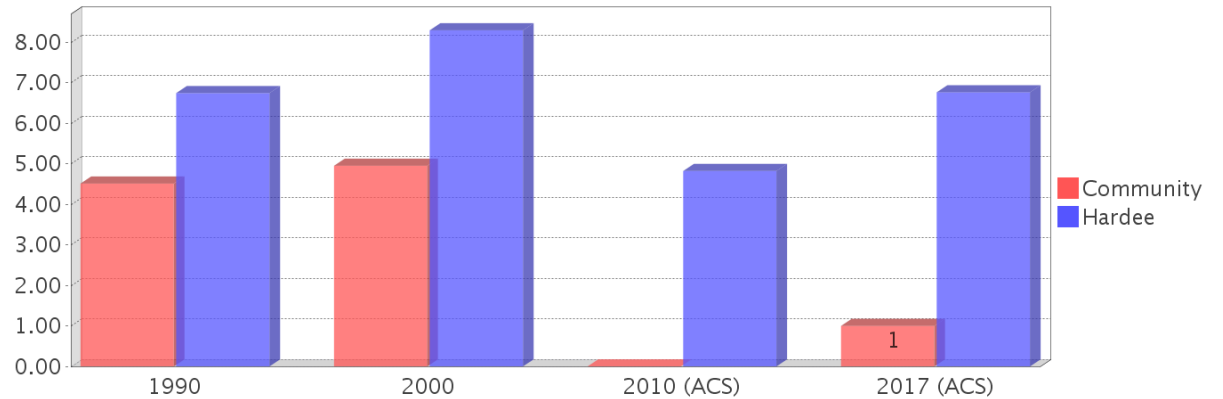
## Housing Tenure



## Median Housing Value Comparison

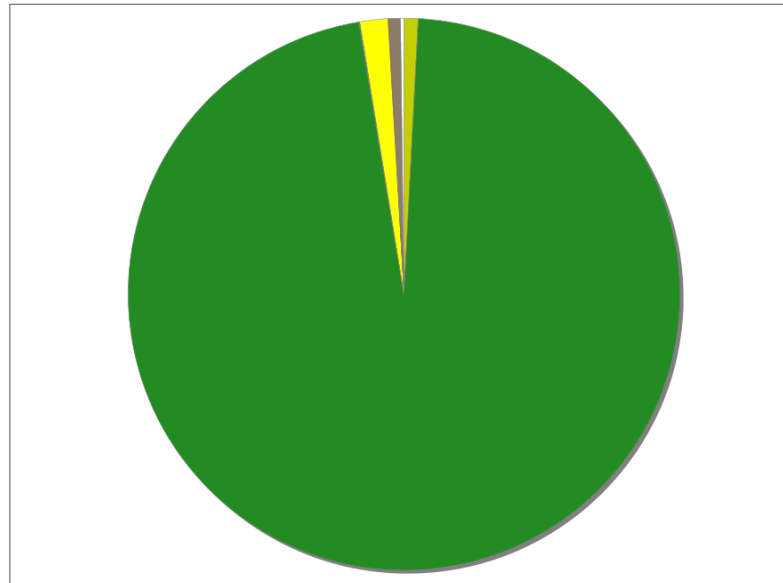


## Occupied Units With No Vehicles Available



## Existing Land Use

Land Use Type	Acres	Percentage
Acreage Not Zoned For Agriculture	159	0.83%
Agricultural	18,258	95.59%
Centrally Assessed	0	0.00%
Industrial	0	0.00%
Institutional	3	0.02%
Mining	0	0.00%
Other	1	0.01%
Public/Semi-Public	7	0.04%
Recreation	0	0.00%
Residential	312	1.63%
Retail/Office	10	0.05%
Row	0	0.00%
Vacant Residential	124	0.65%
Vacant Nonresidential	0	0.00%
Water	0	0.00%
Parcels With No Values	37	0.19%



- Acreage Not Zoned For Agriculture
- Agricultural
- Centrally Assessed
- Industrial
- Institutional
- Mining
- Other
- Public/Semi-Public
- Recreation
- Residential
- Retail/Office
- Row
- Vacant Residential
- Vacant Nonresidential
- Water
- Parcels With No Values

## Location Maps



---

## Community Facilities

The community facilities information below is useful in a variety of ways for environmental evaluations. These community resources should be evaluated for potential sociocultural effects, such as accessibility and relocation potential. The facility types may indicate the types of population groups present in the project study area. Facility staff and leaders can be sources of community information such as who uses the facility and how it is used. Additionally, community facilities are potential public meeting venues.

### Religious Centers (Points)

Facility Name	Address	Zip Code
CHARLIE CREEK BAPTIST CHURCH	1000 MOCKINGBIRD ROAD	33873

### US Census Places

Facility Name
Lemon Grove

---

## Block Groups

The following Census Block Groups were used to calculate demographics for this report.

### 1990 Census Block Groups

120499701001

### 2000 Census Block Groups

120499701001

### 2010 Census Block Groups

120499701023, 121050158021, 120499701011

### 2017 Census Block Groups

120499701023, 121050158021, 120499701011

---

## Data Sources

### Area

The geographic area of the community based on a user-specified community boundary or area of interest (AOI) boundary.

### Jurisdiction

Jurisdiction(s) includes local government boundaries that intersect the community or AOI boundary.

### Demographic Data

Demographic data reported under the headings General Population Trends, Race and Ethnicity Trends, Age Trends, Income Trends, Educational Attainment Trends, Language Trends, and Housing Trends is from the U.S. Decennial Census (1990, 2000) and the American Community Survey (ACS) 5-year estimates from 2006-2010 and 2013-2017. The data was gathered at the block group level for user-specified community boundaries and AOIs, and at the county level for counties. Depending on the dataset, the data represents 100% counts (Census Summary File 1) or sample-based information (Census Summary File 3 or ACS).

### About the Census Data:

User-specified community boundaries and AOIs do not always correspond precisely to block group boundaries. In these instances, adjustment of the geographic area and data for affected block groups is required to estimate the actual population. To improve the accuracy of such estimates in the SDR report, the census block group data was adjusted to exclude all census blocks with a population of two or fewer. These areas were eliminated from the corresponding years' block groups. Next, the portion of the block group that lies outside of the community or AOI boundary was removed. The demographics within each block group were then recalculated, assuming an equal area distribution of the population. Note that there may be areas where there is no population.

Use caution when comparing the 100% count data (Decennial Census) to the sample-based data (ACS). In any given year, about one in 40 or 2.5% of U.S. households will receive the ACS questionnaire. Over any five-year period, about one in eight households will receive the questionnaire, as compared to about one in six that received the long form questionnaire for the Decennial Census 2000. (Source: <http://mcdc.missouri.edu/pub/data/acs/Readme.shtml>) The U.S. Census Bureau provides help with this process:

<https://www.census.gov/programs-surveys/acs/guidance/comparing-acs-data/2017.html>

Use caution when interpreting changes in Race and Ethnicity over time. Starting with the 2000 Decennial Census, respondents were given a new option of selecting one or more race categories. Also in 2000, the placement of the question about Hispanic origin changed, helping to increase responsiveness to the Hispanic-origin question. Because of these and other changes, the 1990 data on race and ethnicity are not directly comparable with data from later censuses. (Source: <http://www.census.gov/prod/2001pubs/c2kbr01-1.pdf>; <http://www.census.gov/pred/www/rpts/Race%20and%20Ethnicity%20FINAL%20report.pdf>)

The "Minority" calculations are derived from Census and ACS data using both the race and ethnicity responses. On this report, "Minority" refers to individuals who list a race other than White and/or list their ethnicity as Hispanic/Latino. In other words, people who are multi-racial, any single race other than White, or Hispanic/Latino of any race are considered minorities.

Disability data is not included in the 2010 Decennial Census, or the 2006-2010 ACS. This data is available in the 2013-2017 ACS.

Because of changes made to the Census and ACS questions between 1990 and 2017, disability variables should not be compared from year to year. For example: 1) With the 1990 data the disabilities are listed as a "work disability" while this distinction is not made with 2000 or 2017 ACS data; 2) The 2017 ACS data includes the institutionalized population (e.g. persons in prisons and group homes), while this population is not included in 1990 or 2000; 3) the age groupings changed over the years.

Please take the following two concerns into account when viewing this data: 1) With the 1990 data the disabilities are listed as a "work disability" while this distinction is not made with 2000 or 2017 ACS data; 2) The 2017 ACS data includes the institutionalized population (e.g. persons in prisons and group homes), while this population is not included in 1990 or 2000.

The category Bachelor's Degree or Higher under the heading Educational Attainment Trends is a subset of the category High School Graduate or Higher.

Income of households. This includes the income of the householder and all other individuals 15 years old and over in the household, whether they are related to the householder or not. Because many households consist of only one person, average household income is usually less than average family income.

Income of families. In compiling statistics on family income, the incomes of all members 15 years old and over related to the householder are summed and treated as a single amount.

Age Trends median age for 1990 is not available.

### **Land Use Data**

The Land Use information Indicates acreages and percentages for the generalized land use types used to group parcel-specific, existing land use assigned by the county property appraiser office according to the Florida Department of Revenue land use codes.

### **Community Facilities Data**

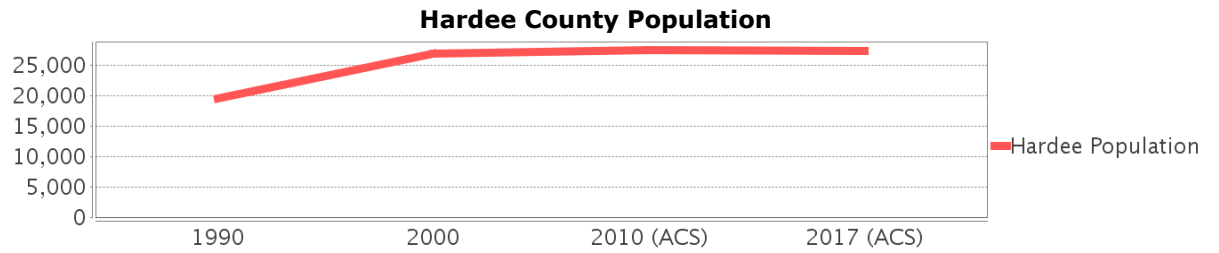
- Assisted Rental Housing Units - Identifies multifamily rental developments that receive funding assistance under federal, state, and local government programs to offer affordable housing as reported by the Shimberg Center for Housing Studies, University of Florida.
- Mobile Home Parks - Identifies approved or acknowledged mobile home parks reported by the Florida Department of Business and Professional Regulation and Florida Department of Health.
- Migrant Camps - Identifies migrant labor camp facilities inspected by the Florida Department of Health.
- Group Care Facilities - Identifies group care facilities inspected by the Florida Department of Health.

- Community Center and Fraternal Association Facilities - Identifies facilities reported by multiple sources.
- Law Enforcement Correctional Facilities - Identifies facilities reported by multiple sources.
- Cultural Centers - Identifies cultural centers including organizations, buildings, or complexes that promote culture and arts (e.g., aquariums and zoological facilities; arboreta and botanical gardens; dinner theaters; drive-ins; historical places and services; libraries; motion picture theaters; museums and art galleries; performing arts centers; performing arts theaters; planetariums; studios and art galleries; and theater producers stage facilities) reported by multiple sources.
- Fire Department and Rescue Station Facilities - Identifies facilities reported by multiple sources.
- Government Buildings - Identifies local, state, and federal government buildings reported by multiple sources.
- Health Care Facilities - Identifies health care facilities including abortion clinics, dialysis clinics, medical doctors, nursing homes, osteopaths, state laboratories/clinics, and surgicenters/walk-in clinics reported by the Florida Department of Health.
- Hospital Facilities - Identifies hospital facilities reported by multiple sources.
- Law Enforcement Facilities - Identifies law enforcement facilities reported by multiple sources.
- Parks and Recreational Facilities - Identifies parks and recreational facilities reported by multiple sources.
- Religious Center Facilities - Identifies religious centers including churches, temples, synagogues, mosques, chapels, centers, and other types of religious facilities reported by multiple sources.
- Private and Public Schools - Identifies private and public schools reported by multiple sources.
- Social Service Centers - Identifies social service centers reported by multiple sources.
- Veteran Organizations and Facilities

# Hardee County Demographic Profile

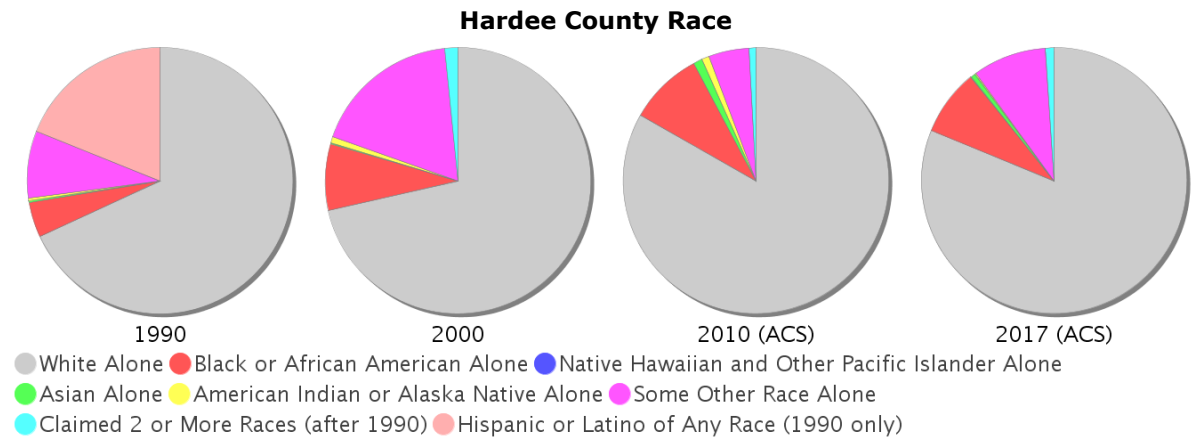
## General Population Trends - Hardee

Description	1990	2000	2010 (ACS)	2017 (ACS)
Total Population	19,499	26,938	27,521	27,326
Total Households	6,391	8,166	7,694	7,718
Average Persons per Acre	0.048	0.066	0.067	0.067
Average Persons per Household	3.051	3.053	3.00	3.26
Average Persons per Family	3.396	3.522	3.837	3.962
Males	9,885	14,629	14,895	14,716
Females	9,614	12,309	12,626	12,610



## Race and Ethnicity Trends - Hardee

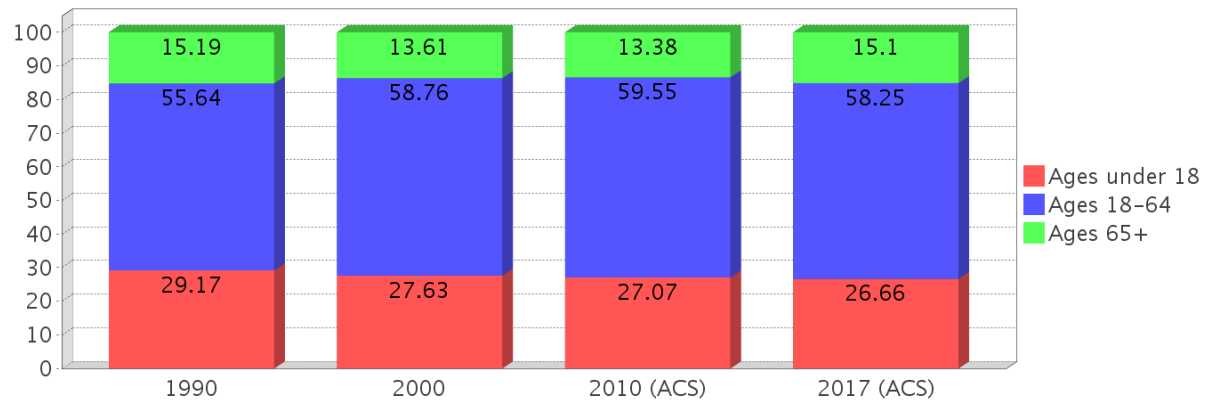
Description	1990	2000	2010 (ACS)	2017 (ACS)
White Alone	16,382 (84.01%)	19,237 (71.41%)	22,901 (83.21%)	22,175 (81.15%)
Black or African American Alone	1,034 (5.30%)	2,168 (8.05%)	2,482 (9.02%)	2,206 (8.07%)
Native Hawaiian and Other Pacific Islander Alone	(NA)	0 (0.00%)	0 (0.00%)	9 (0.03%)
Asian Alone	42 (0.22%)	44 (0.16%)	304 (1.10%)	164 (0.60%)
American Indian or Alaska Native Alone	82 (0.42%)	194 (0.72%)	249 (0.90%)	41 (0.15%)
Some Other Race Alone	1,959 (10.05%)	4,860 (18.04%)	1,359 (4.94%)	2,455 (8.98%)
Claimed 2 or More Races	(NA)	435 (1.61%)	226 (0.82%)	276 (1.01%)
Hispanic or Latino of Any Race	4,562 (23.40%)	9,702 (36.02%)	11,377 (41.34%)	11,801 (43.19%)
Not Hispanic or Latino	14,937 (76.60%)	17,236 (63.98%)	16,144 (58.66%)	15,525 (56.81%)
Minority	14,416 (73.93%)	12,097 (44.91%)	14,416 (52.38%)	14,382 (52.63%)



### Age Trends - Hardee

Description	1990	2000	2010 (ACS)	2017 (ACS)
Under Age 5	7.76%	7.68%	7.70%	6.56%
Ages 5-17	21.41%	19.96%	19.36%	20.09%
Ages 18-21	5.77%	6.60%	7.19%	5.50%
Ages 22-29	11.21%	12.05%	11.39%	11.70%
Ages 30-39	13.51%	14.23%	13.40%	12.19%
Ages 40-49	11.30%	12.60%	13.66%	12.25%
Ages 50-64	13.85%	13.28%	13.92%	16.62%
Age 65 and Over	15.19%	13.61%	13.38%	15.10%
-Ages 65-74	9.35%	7.67%	7.64%	8.39%
-Ages 75-84	4.71%	4.34%	4.54%	4.97%
-Age 85 and Over	1.13%	1.60%	1.20%	1.73%
Median Age	NA	33	33	35

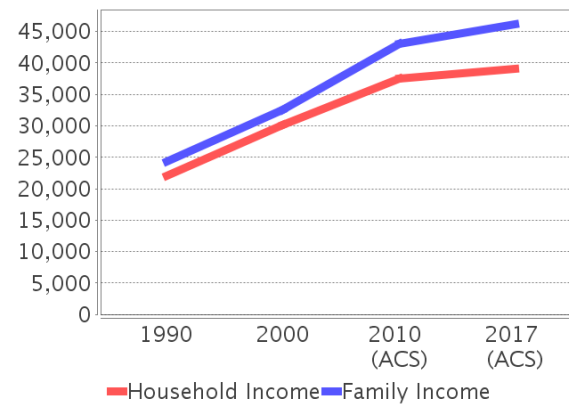
Percentage Population by Age Group - Hardee



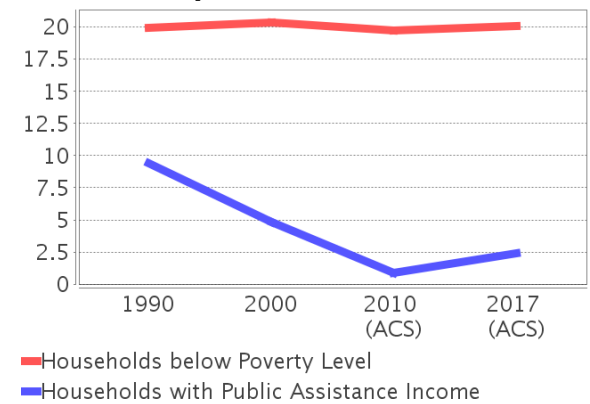
### Income Trends - Hardee

Description	1990	2000	2010 (ACS)	2017 (ACS)
Median Household Income	\$22,065	\$30,183	\$37,466	\$39,063
Median Family Income	\$24,327	\$32,487	\$43,001	\$46,163
Population below Poverty Level	22.84%	24.59%	26.06%	24.52%
Households below Poverty Level	19.93%	20.33%	19.69%	20.06%
Households with Public Assistance Income	9.40%	4.80%	0.90%	2.41%

Income Trends



Poverty and Public Assistance



### Disability Trends - Hardee

See the Data Sources section below for an explanation about the differences in disability data among the various years.

Description	1990	2000	2010 (ACS)	2017 (ACS)
Population 16 To 64 Years with a disability	1,381 (9.75%)	3,617 (15.45%)	NA (NA)	NA (NA)
Population 20 To 64 Years with a disability	NA (NA)	NA (NA)	NA (NA)	1,150 (8.52%)

## Educational Attainment Trends - Hardee

Age 25 and Over

Description	1990	2000	2010 (ACS)	2017 (ACS)
Less than 9th Grade	3,264 (27.50%)	3,956 (23.96%)	4,224 (24.64%)	2,969 (17.17%)
9th to 12th Grade, No Diploma	2,095 (17.65%)	2,985 (18.08%)	2,655 (15.49%)	1,878 (10.86%)
High School Graduate or Higher	6,509 (54.84%)	9,568 (57.96%)	10,262 (59.87%)	12,441 (71.96%)
Bachelor's Degree or Higher	1,019 (8.59%)	1,386 (8.40%)	1,282 (7.48%)	1,819 (10.52%)

## Language Trends - Hardee

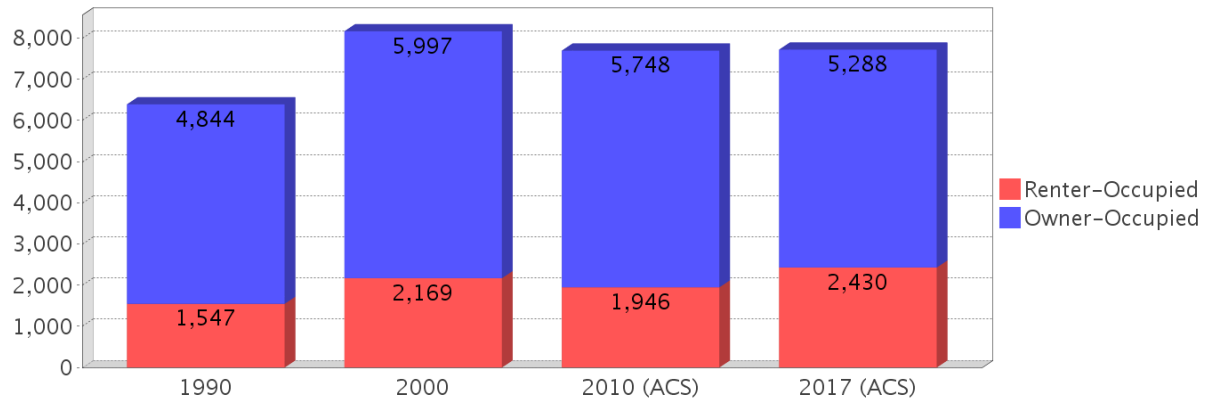
Age 5 and Over

Description	1990	2000	2010 (ACS)	2017 (ACS)
Speaks English Well	968 (5.38%)	1,391 (5.59%)	1,817 (7.15%)	2,444 (9.57%)
Speaks English Not Well	NA (NA)	1,543 (6.20%)	2,021 (7.96%)	1,457 (5.71%)
Speaks English Not at All	NA (NA)	1,262 (5.07%)	2,076 (8.17%)	797 (3.12%)
Speaks English Not Well or Not at All	753 (4.18%)	2,805 (11.28%)	4,097 (16.13%)	2,254 (8.83%)

## Housing Trends - Hardee

Description	1990	2000	2010 (ACS)	2017 (ACS)
Total	7,941	9,820	9,811	9,724
Units per Acre	0.019	0.024	0.024	0.024
Single-Family Units	4,321	5,748	5,845	5,593
Multi-Family Units	338	571	933	1,043
Mobile Home Units	1,690	2,928	2,902	2,948
Owner-Occupied Units	4,844	5,997	5,748	5,288
Renter-Occupied Units	1,547	2,169	1,946	2,430
Vacant Units	1,550	1,654	2,117	2,006
Median Housing Value	\$38,500	\$53,400	\$111,000	\$81,200
Occupied Housing Units w/No Vehicle	431 (6.74%)	677 (8.29%)	371 (4.82%)	522 (6.76%)

## Housing Tenure - Hardee



---

## County Data Sources

Demographic data reported is from the U.S. Decennial Census (1990, 2000) and the American Community Survey (ACS) 5-year estimates from 2006-2010 and 2013-2017. The data was gathered at the county level. Depending on the dataset, the data represents 100% counts (Census Summary File 1) or sample-based information (Census Summary File 3 or ACS).

### About the Census Data:

Use caution when comparing the 100% count data (Decennial Census) to the sample-based data (ACS). In any given year, about one in 40 or 2.5% of U.S. households will receive the ACS questionnaire. Over any five-year period, about one in eight households will receive the questionnaire, as compared to about one in six that received the long form questionnaire for the Decennial Census 2000. (Source: <http://mcdc.missouri.edu/pub/data/acs/Readme.shtml>) The U.S. Census Bureau provides help with this process:

<https://www.census.gov/programs-surveys/acs/guidance/comparing-acs-data/2017.html>

Use caution when interpreting changes in Race and Ethnicity over time. Starting with the 2000 Decennial Census, respondents were given a new option of selecting one or more race categories. Also in 2000, the placement of the question about Hispanic origin changed, helping to increase responsiveness to the Hispanic-origin question. Because of these and other changes, the 1990 data on race and ethnicity are not directly comparable with data from later censuses. (Source: <http://www.census.gov/prod/2001pubs/c2kbr01-1.pdf>; <http://www.census.gov/pred/www/rpts/Race%20and%20Ethnicity%20FINAL%20report.pdf>)

The "Minority" calculations are derived from Census and ACS data using both the race and ethnicity responses. On this report, "Minority" refers to individuals who list a race other than White and/or list their ethnicity as Hispanic/Latino. In other words, people who are multi-racial, any single race other than White, or Hispanic/Latino of any race are considered minorities.

Disability data is not included in the 2010 Decennial Census, or the 2006-2010 ACS. This data is available in the 2013-2017 ACS.

Because of changes made to the Census and ACS questions between 1990 and 2017, disability variables should not be compared from year to year. For example: 1) With the 1990 data the disabilities are listed as a "work disability" while this distinction is not made with 2000 or 2017 ACS data; 2) The 2017 ACS data includes the institutionalized population (e.g. persons in prisons and group homes), while this population is not included in 1990 or 2000; 3) the age groupings changed over the years.

Please take the following two concerns into account when viewing this data: 1) With the 1990 data the disabilities are listed as a "work disability" while this distinction is not made with 2000 or 2017 ACS data; 2) The 2017 ACS data includes the institutionalized population (e.g. persons in prisons and group homes), while this population is not included in 1990 or 2000.

source:

<https://www.census.gov/people/disability/methodology/acs.html>

<https://www.census.gov/population/www/cen2000/90vs00/index.html>

The category Bachelor's Degree or Higher under the heading Educational Attainment Trends is a subset of the category High School Graduate or Higher.

---

## Metadata

- Community and Fraternal Centers [https://etdmpub.florida-estat.org/metadata/gc\\_communitycenter.htm](https://etdmpub.florida-estat.org/metadata/gc_communitycenter.htm)
- Correctional Facilities in Florida [https://etdmpub.florida-estat.org/metadata/gc\\_correctional.htm](https://etdmpub.florida-estat.org/metadata/gc_correctional.htm)
- Cultural Centers in Florida [https://etdmpub.florida-estat.org/metadata/gc\\_culturecenter.htm](https://etdmpub.florida-estat.org/metadata/gc_culturecenter.htm)
- Fire Department and Rescue Station Facilities in Florida [https://etdmpub.florida-estat.org/metadata/gc\\_firestat.htm](https://etdmpub.florida-estat.org/metadata/gc_firestat.htm)
- Local, State, and Federal Government Buildings in Florida [https://etdmpub.florida-estat.org/metadata/gc\\_govbuild.htm](https://etdmpub.florida-estat.org/metadata/gc_govbuild.htm)
- Florida Health Care Facilities [https://etdmpub.florida-estat.org/metadata/gc\\_health.htm](https://etdmpub.florida-estat.org/metadata/gc_health.htm)
- Hospital Facilities in Florida [https://etdmpub.florida-estat.org/metadata/gc\\_hospitals.htm](https://etdmpub.florida-estat.org/metadata/gc_hospitals.htm)
- Law Enforcement Facilities in Florida [https://etdmpub.florida-estat.org/metadata/gc\\_lawenforce.htm](https://etdmpub.florida-estat.org/metadata/gc_lawenforce.htm)
- Florida Parks and Recreational Facilities [https://etdmpub.florida-estat.org/metadata/gc\\_parks.htm](https://etdmpub.florida-estat.org/metadata/gc_parks.htm)
- Religious Centers [https://etdmpub.florida-estat.org/metadata/gc\\_religion.htm](https://etdmpub.florida-estat.org/metadata/gc_religion.htm)
- Florida Public and Private Schools [https://etdmpub.florida-estat.org/metadata/gc\\_schools.htm](https://etdmpub.florida-estat.org/metadata/gc_schools.htm)
- Social Service Centers [https://etdmpub.florida-estat.org/metadata/gc\\_socialservice.htm](https://etdmpub.florida-estat.org/metadata/gc_socialservice.htm)
- Assisted Rental Housing Units in Florida [https://etdmpub.florida-estat.org/metadata/gc\\_assisted\\_housing.htm](https://etdmpub.florida-estat.org/metadata/gc_assisted_housing.htm)
- Group Care Facilities <https://etdmpub.florida-estat.org/metadata/groupcare.htm>
- Mobile Home Parks in Florida [https://etdmpub.florida-estat.org/metadata/gc\\_mobilehomes.htm](https://etdmpub.florida-estat.org/metadata/gc_mobilehomes.htm)
- Migrant Camps in Florida <https://etdmpub.florida-estat.org/metadata/migrant.htm>
- Veteran Organizations and Facilities [https://etdmpub.florida-estat.org/metadata/gc\\_veterans.htm](https://etdmpub.florida-estat.org/metadata/gc_veterans.htm)
- Generalized Land Use - Florida DOT District 1 [https://etdmpub.florida-estat.org/metadata/d1\\_lu\\_gen.htm](https://etdmpub.florida-estat.org/metadata/d1_lu_gen.htm)
- Census Block Groups in Florida [https://etdmpub.florida-estat.org/metadata/e2\\_cenacs\\_cci.htm](https://etdmpub.florida-estat.org/metadata/e2_cenacs_cci.htm)
- 1990 Census Block Groups in Florida [https://etdmpub.florida-estat.org/metadata/e2\\_cenblkgrp\\_1990\\_cci.htm](https://etdmpub.florida-estat.org/metadata/e2_cenblkgrp_1990_cci.htm)
- 2000 Census Block Groups in Florida [https://etdmpub.florida-estat.org/metadata/e2\\_cenblkgrp\\_2000\\_cci.htm](https://etdmpub.florida-estat.org/metadata/e2_cenblkgrp_2000_cci.htm)
- 2010 Census Block Groups in Florida [https://etdmpub.florida-estat.org/metadata/e2\\_cenblkgrp\\_2010\\_cci.htm](https://etdmpub.florida-estat.org/metadata/e2_cenblkgrp_2010_cci.htm)