

Sociocultural Data Report

Merritt Island

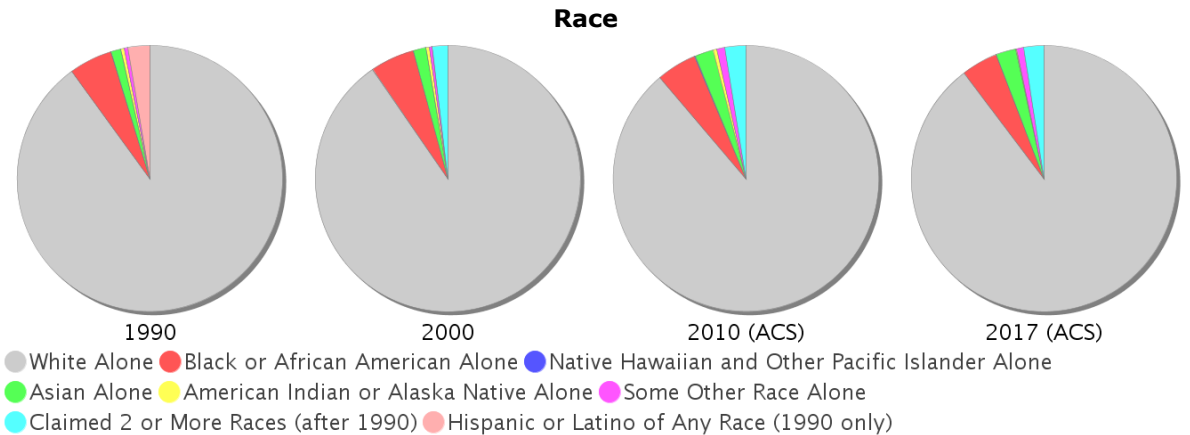
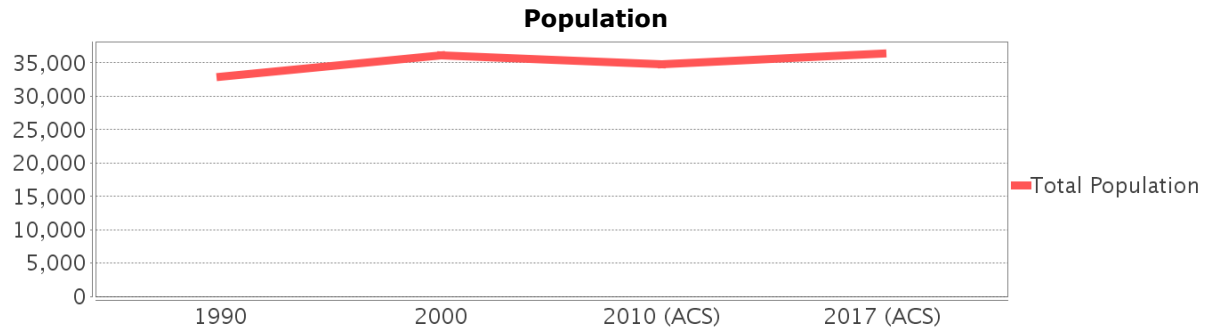
Area: 47.183 square miles
Jurisdiction(s): **Cities:** Cocoa
Counties: Brevard

General Population Trends

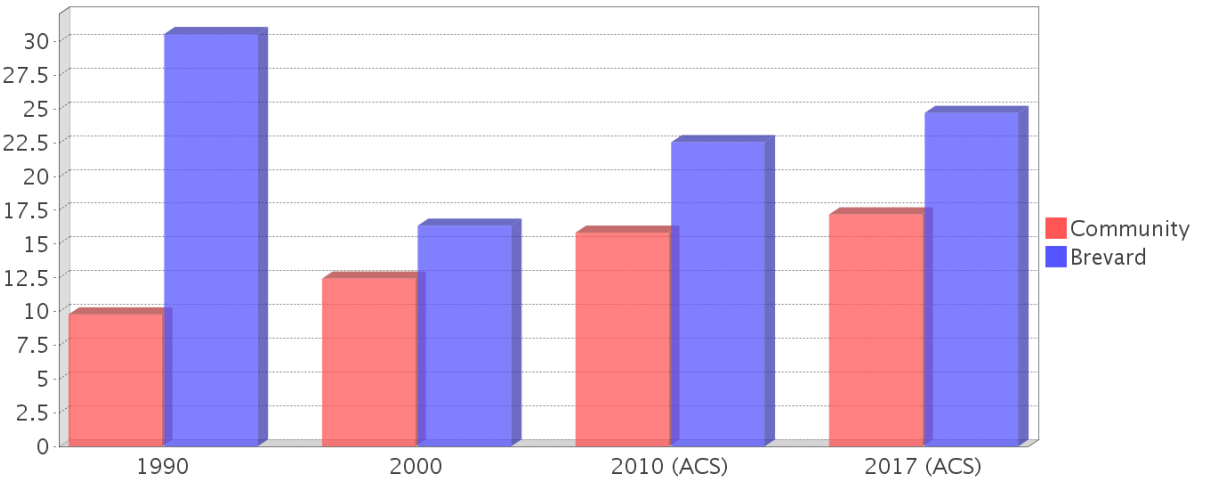
Description	1990	2000	2010 (ACS)	2017 (ACS)
Total Population	32,925	36,091	34,743	36,380
Total Households	13,383	14,956	14,754	14,984
Average Persons per Acre	4.27	4.64	4.55	4.84
Average Persons per Household	2.45	2.34	2.17	2.42
Average Persons per Family	2.89	2.88	2.96	3.13
Males	16,084	17,657	17,026	17,625
Females	16,841	18,434	17,717	18,755

Race and Ethnicity Trends

Description	1990	2000	2010 (ACS)	2017 (ACS)
White Alone	30,436 (92.44%)	32,636 (90.43%)	30,832 (88.74%)	32,628 (89.69%)
Black or African American Alone	1,786 (5.42%)	1,932 (5.35%)	1,696 (4.88%)	1,610 (4.43%)
Native Hawaiian and Other Pacific Islander Alone	16 (0.05%)	4 (0.01%)	40 (0.12%)	17 (0.05%)
Asian Alone	412 (1.25%)	575 (1.59%)	781 (2.25%)	887 (2.44%)
American Indian or Alaska Native Alone	121 (0.37%)	127 (0.35%)	169 (0.49%)	35 (0.10%)
Some Other Race Alone	154 (0.47%)	144 (0.40%)	332 (0.96%)	299 (0.82%)
Claimed 2 or More Races	NA (NA)	673 (1.86%)	893 (2.57%)	904 (2.48%)
Hispanic or Latino of Any Race	909 (2.76%)	1,299 (3.60%)	2,129 (6.13%)	2,839 (7.80%)
Not Hispanic or Latino	32,016 (97.24%)	34,792 (96.40%)	32,614 (93.87%)	33,541 (92.20%)
Minority	3,219 (9.78%)	4,490 (12.44%)	5,502 (15.84%)	6,252 (17.19%)



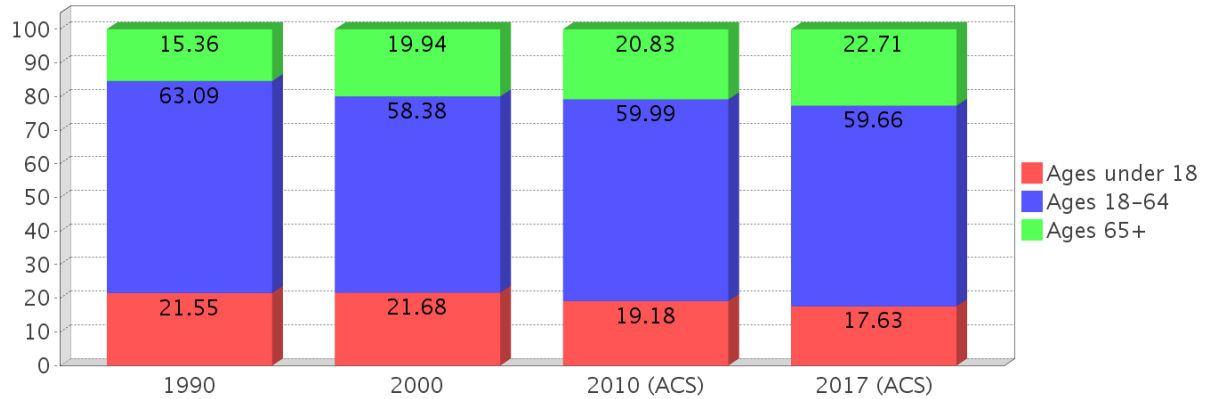
Minority Percentage Population



Age Trends

Description	1990	2000	2010 (ACS)	2017 (ACS)
Under Age 5	5.67%	4.80%	4.22%	3.77%
Ages 5-17	15.88%	16.88%	14.96%	13.85%
Ages 18-21	4.36%	3.88%	4.29%	3.09%
Ages 22-29	10.73%	6.12%	6.97%	9.75%
Ages 30-39	15.15%	13.22%	8.49%	8.37%
Ages 40-49	13.70%	16.31%	15.71%	11.92%
Ages 50-64	19.14%	18.84%	24.53%	26.53%
Age 65 and Over	15.36%	19.94%	20.83%	22.71%
-Ages 65-74	9.69%	10.36%	10.64%	12.20%
-Ages 75-84	4.56%	6.46%	7.30%	7.12%
-Age 85 and Over	1.11%	3.11%	2.88%	3.39%
Median Age	NA	42	48	49

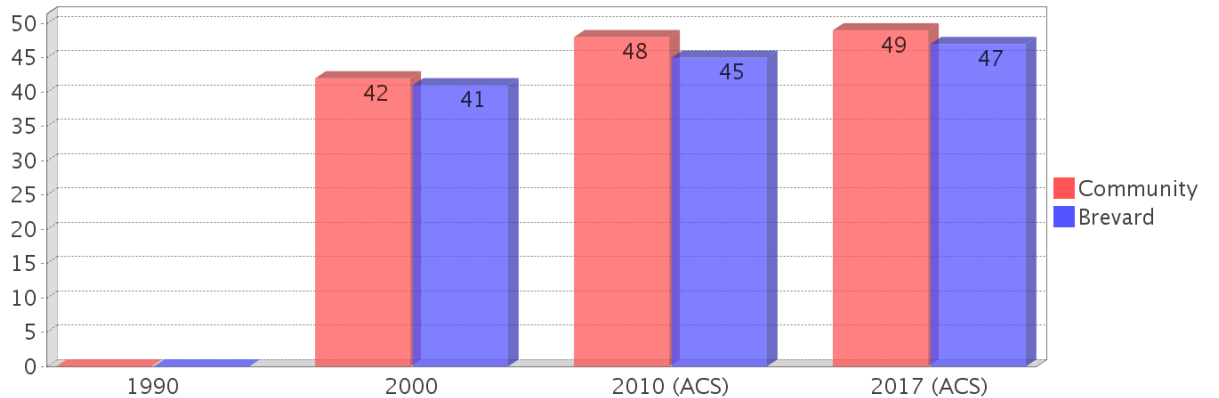
Percentage Population by Age Group



Income Trends

Description	1990	2000	2010 (ACS)	2017 (ACS)
Median Household Income	\$35,833	\$39,688	\$55,078	\$52,688
Median Family Income	\$40,625	\$46,250	\$61,243	\$68,611
Population below Poverty Level	7.08%	9.24%	7.81%	13.79%
Households below Poverty Level	7.20%	8.67%	8.10%	12.80%
Households with Public Assistance Income	4.75%	2.37%	0.64%	1.04%

Median Age Comparison

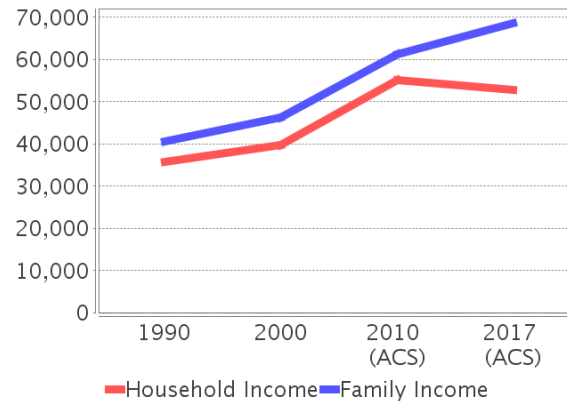


Disability Trends

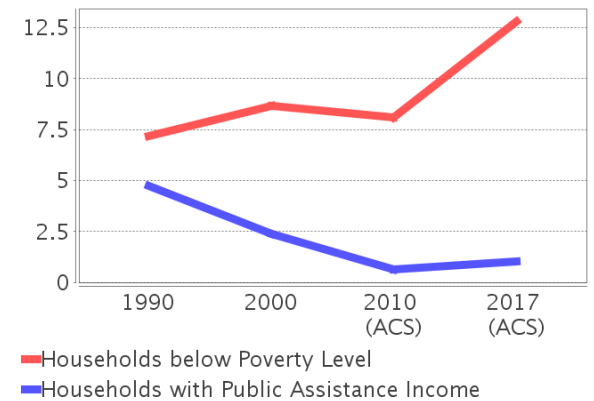
See the Data Sources section below for an explanation about the differences in disability data among the various years.

Description	1990	2000	2010 (ACS)	2017 (ACS)
Population 16 To 64 Years with a disability	1674 (6.34%)	4406 (13.03%)	(NA)	(NA)
Population 20 To 64 Years with a disability	(NA)	(NA)	(NA)	2579 (12.27%)

Income Trends



Poverty and Public Assistance



Educational Attainment Trends

Age 25 and Over

Description	1990	2000	2010 (ACS)	2017 (ACS)
Less than 9th Grade	877 (3.75%)	716 (2.75%)	511 (2.03%)	450 (1.64%)
9th to 12th Grade, No Diploma	2,512 (10.74%)	2,311 (8.86%)	1,448 (5.75%)	1,277 (4.66%)
High School Graduate or Higher	20,005 (85.51%)	23,048 (88.39%)	23,239 (92.23%)	25,700 (93.70%)
Bachelor's Degree or Higher	5,474 (23.40%)	7,352 (28.20%)	7,575 (30.06%)	8,900 (32.45%)

Language Trends

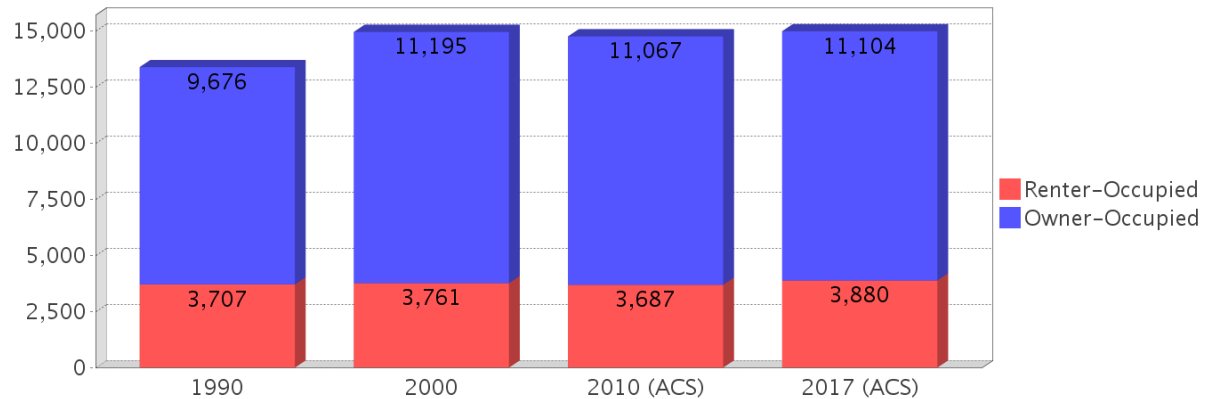
Age 5 and Over

Description	1990	2000	2010 (ACS)	2017 (ACS)
Speaks English Well	449 (1.45%)	545 (1.59%)	436 (1.33%)	723 (2.07%)
Speaks English Not Well	NA (NA)	300 (0.87%)	190 (0.58%)	269 (0.77%)
Speaks English Not at All	NA (NA)	31 (0.09%)	69 (0.21%)	13 (0.04%)
Speaks English Not Well or Not at All	251 (0.81%)	331 (0.96%)	259 (0.79%)	282 (0.81%)

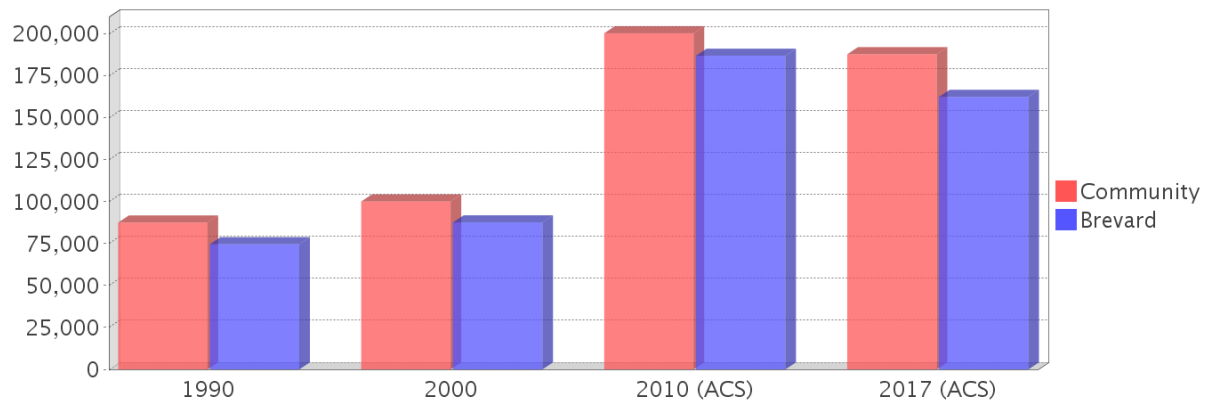
Housing Trends

Description	1990	2000	2010 (ACS)	2017 (ACS)
Total	14,427	15,814	17,036	17,363
Units per Acre	1.38	1.51	1.63	1.66
Single-Family Units	10,061	11,952	12,820	13,096
Multi-Family Units	2,583	3,116	3,528	3,645
Mobile Home Units	654	692	685	586
Owner-Occupied Units	9,676	11,195	11,067	11,104
Renter-Occupied Units	3,707	3,761	3,687	3,880
Vacant Units	1,044	858	2,282	2,379
Median Housing Value	\$87,500	\$100,050	\$200,300	\$187,800
Occupied Housing Units w/No Vehicle	784 (5.86%)	981 (6.56%)	662 (4.49%)	865 (5.77%)

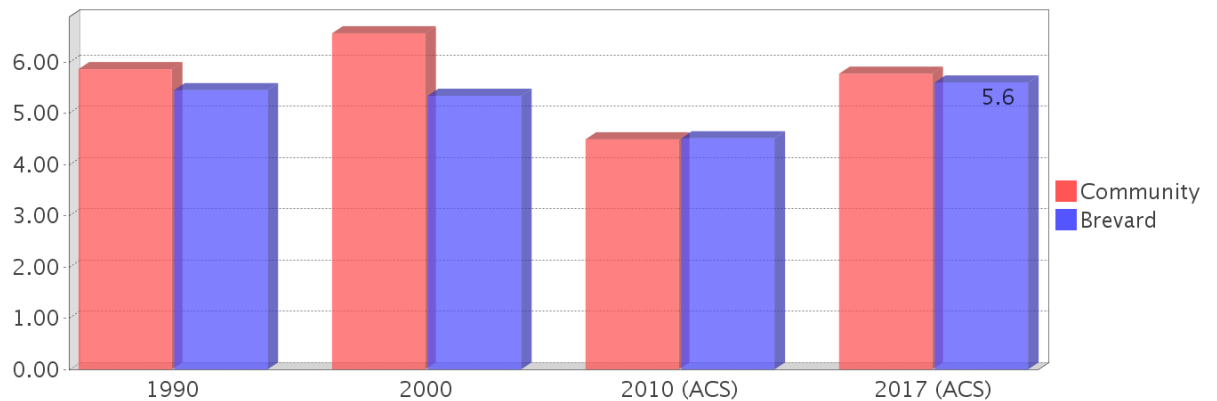
Housing Tenure



Median Housing Value Comparison

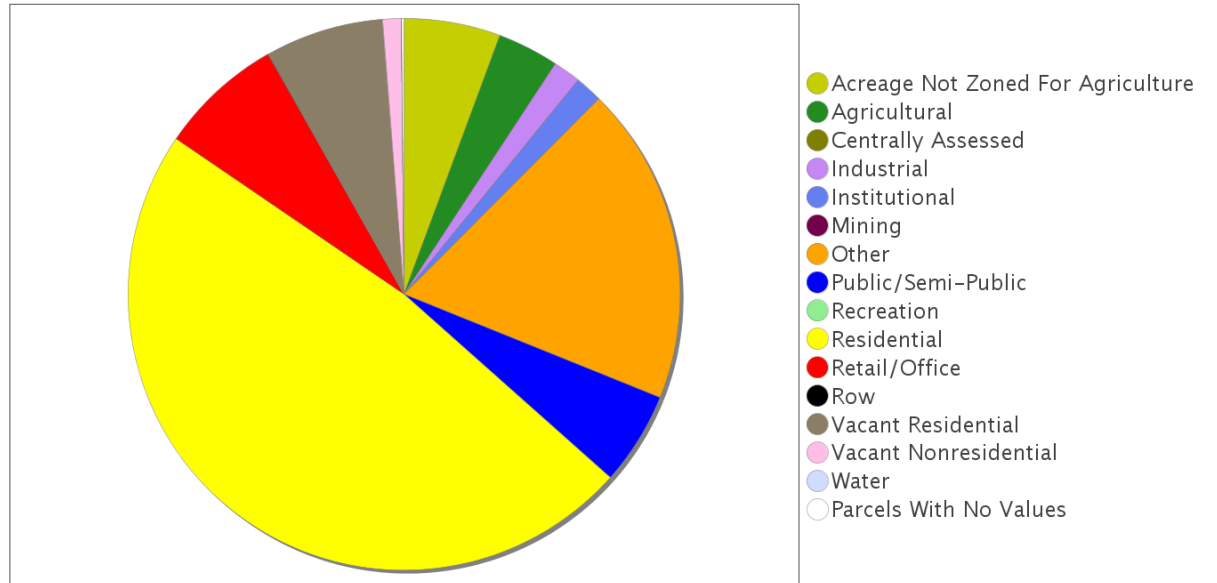


Occupied Units With No Vehicles Available

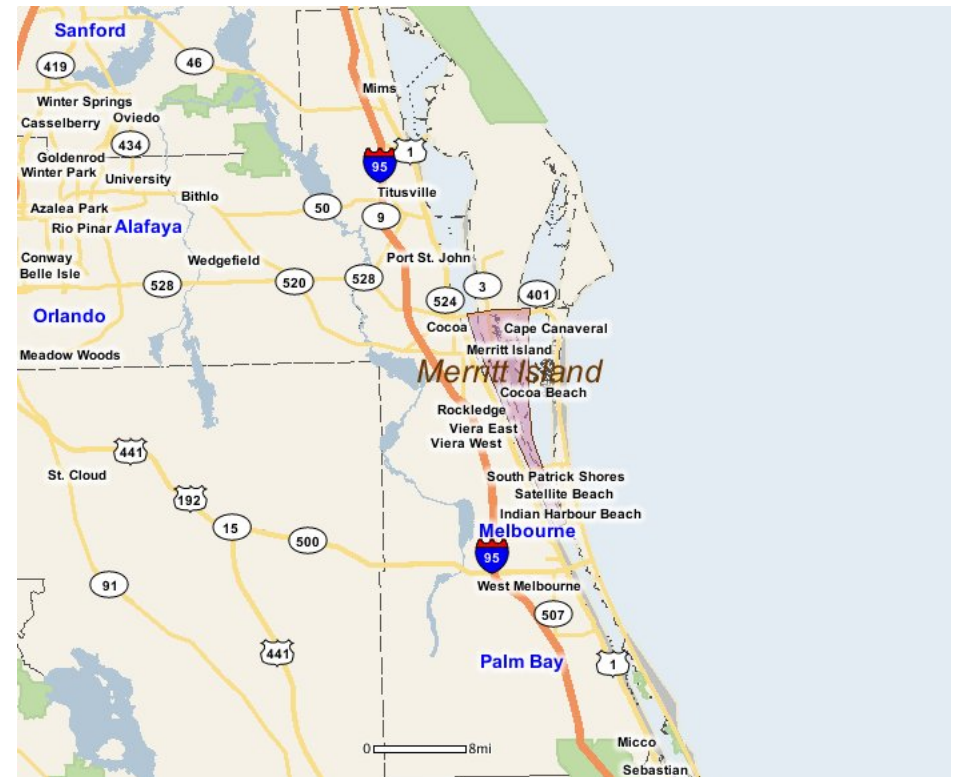
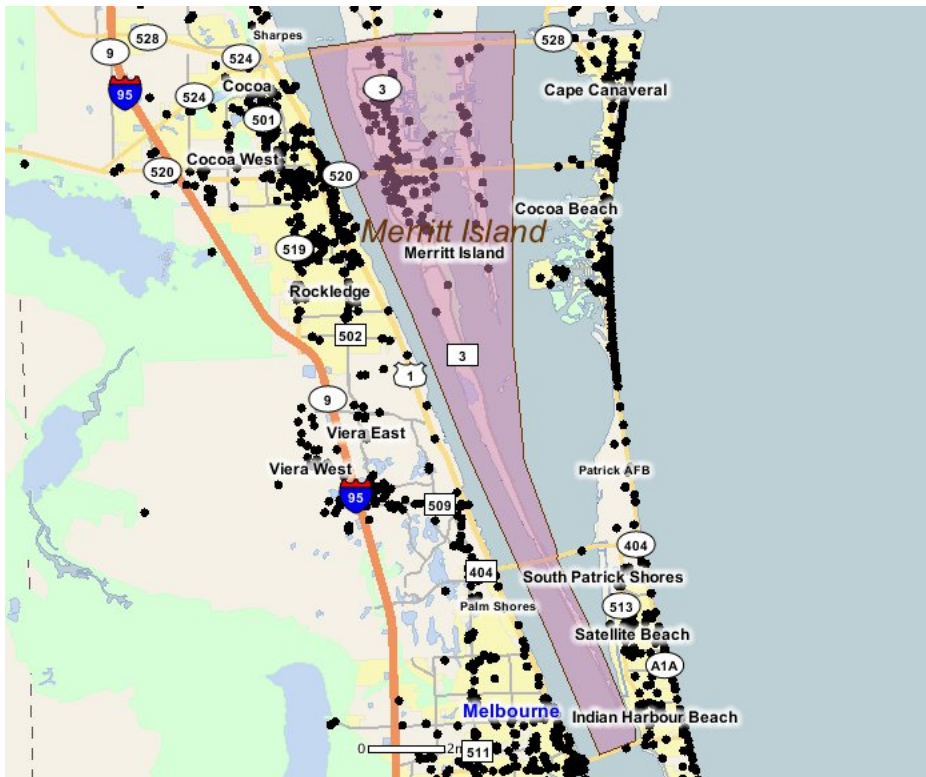


Existing Land Use

Land Use Type	Acres	Percentage
Acreage Not Zoned For Agriculture	570	1.89%
Agricultural	365	1.21%
Centrally Assessed	0	0.00%
Industrial	164	0.54%
Institutional	162	0.54%
Mining	0	0.00%
Other	1,883	6.24%
Public/Semi-Public	551	1.82%
Recreation	0	0.00%
Residential	4,844	16.04%
Retail/Office	735	2.43%
Row	3	0.01%
Vacant Residential	699	2.31%
Vacant Nonresidential	113	0.37%
Water	1	0.00%
Parcels With No Values	13	0.04%



Location Maps



Community Facilities

The community facilities information below is useful in a variety of ways for environmental evaluations. These community resources should be evaluated for potential sociocultural effects, such as accessibility and relocation potential. The facility types may indicate the types of population groups present in the project study area. Facility staff and leaders can be sources of community information such as who uses the facility and how it is used. Additionally, community facilities are potential public meeting venues.

Assisted Housing (Points)

Facility Name	Address	Zip Code
TROPICAL MANOR APARTMENTS	1165 JORDAN RD	32953

Community Centers (Points)

Facility Name	Address	Zip Code
GIRL SCOUTS OF AMERICA - MERRITT ISLAND	2250 NEWFOUND HARBOR DR	32952
CHAMBER OF COMMERCE - COCOA BEACH	400 FORTENBERRY RD	32952
KIWANIS ISLAND PARK COMMUNITY CENTER	951 KIWANIS ISLAND PARK RD	32952
WOODY SIMPSON PARK COMMUNITY CENTER	1590 SCHOOLHOUSE ST	32953
DISABLED AMERICAN VETERANS CHAPTER 123	400 S SYKES CREEK PKWY	32952
MASONIC LODGE - MERRITT ISLAND 353	247 S TROPICAL TRL	32952
JUNIOR LEAGUE OF CENTRAL & NORTH BREVARD	240 PARNELL ST	32953
AMERICAN LEGION POST 344	400 S SYKES CREEK PKWY	32952
ELKS LODGE 2650	1520 N SYKES CREEK PKWY	32952
FRATERNAL ORDER OF EAGLES AERIE 4257	1050 N CTNEY PKWY	32953

Cultural Centers (Points)

Facility Name	Address	Zip Code
COBB THEATRE MERRITT SQUARE 16	777 E MERRITT ISLAND CSWY	32952
MERRITT ISLAND PUBLIC LIBRARY	1195 N COURTENAY PKWY	32953

Fire Stations (Points)

Facility Name	Address	Zip Code
BREVARD COUNTY FIRE DEPARTMENT AND RESCUE STATION 41	300 ALMA BLVD	32953
BREVARD COUNTY FIRE DEPARTMENT STATION 42	840 N BANANA RIVER DR	32952
BREVARD COUNTY FIRE DEPARTMENT AND RESCUE STATION 43	902 AIRPORT RD	32952

Florida Parks and Recreational Facilities (Points)

Facility Name	Address	Zip Code
MERRITT ISLAND TOWN CENTER & STORMWATER PARK	400 S SYKES CREEK PKWY PARK	32952
WATTS PARK	695 NEEDLE BLVD	32953
VETERANS MEMORIAL PARK	400 S SYKES CREEK PKY	32952
HARBOR POINT PARK	HARBOR POINT DR	32952
MARGARET & DANNY STRICKLAND PARK	298 MILFORD POINT DR	32952
PINEVIEW PARK	200 MELBOURNE AVE	32953
KIWANIS ISLAND PARK & BOAT RAMP	951 KIWANIS ISLAND PARK RD	32952
KELLY PARK WEST	2455 N BANANA RIVER DR	32952
KELLY PARK EAST & BOAT RAMP	2550 N BANANA RIVER DR	32952
WOODY SIMPSON PARK	1590 SCHOOLHOUSE ST	32953
OSTEEN PARK	425 S TROPICAL TRL	32952
ROTARY PARK MERRITT ISLAND	1899 S COURTENAY PKWY	32952
WALL STREET (UNDEVELOPED) BOAT RAMP	FROM CONE ROAD HEAD SOUTH ON KEMP STREET	32952
ULUMAY WILDLIFE SANCTUARY TRAILHEAD	OLD AUDUBON RD	32953
KELLY PARK EAST SAILBOAT RAMP	2550 N BANANA RIVER DR	32952
INTRACOASTAL WATERWAY PARK	SR 520	32952
BADGER PARK	1195 FAULKINGHAM RD	32952

Government Building

Facility Name	Address	Zip Code
CLERK OF THE COURT - MERRITT ISLAND OFFICE	2575 N COURTENAY PKWY	32953
BREVARD COUNTY SUPERVISOR OF ELECTIONS	2575 N COURTENAY PKWY	32953
BREVARD COUNTY TAX COLLECTOR - MERRITT ISLAND BRANCH OFFICE	1450 N COURTENAY PKWY	32953
U S POST OFFICE - MERRITT ISLAND	333 CROCKETT BLVD	32953
BREVARD COUNTY HEALTH DEPARTMENT	2575 N COURTENAY PKWY	32953

Healthcare Facilities (Geocoded)

Facility Name	Address	Zip Code
JEFFREY T O'BRIEN, MD, INC.	650 S COURTENAY PARKWAY, SUITE 200	32952
ROCKLEDGE HMA MEDICAL GROUP, LLC	2404 N COURTENAY PARKWAY, SUITE D	32953
COURTENAY SAME DAY SURGERY CENTER	2400 N COURTENAY PARKWAY, SUITE 2	32953
NORTH POINT PHYSICIANS LLC	1395 N COURTENAY PRKWY 107	32953
MERRITT ISLAND WALK-IN CLINIC	1045 N COURTENAY PARKWAY	32953
LEIFER KENT MD ALLERGY CLINIC	375 COURTENAY PARKWAY S	32952
MERRITT ISLAND-COURTENAY FMC-7206	245 S COURTENAY PARKWAY, BUILDING A	32952
BREVARD NEPHROLOGY GROUP, PA	245 S COURTENAY PARKWAY	32952
ROCKLEDGE HMA MEDICAL GROUP, LLC	150 N SYKES CREEK PARKWAY, SUITE 300	32953
PHYSICAL MEDICINE & REHAB OF BREVARD PA	270 SYKES CREEK PARKWAY N	32953
ROCKLEDGE HMA MEDICAL GROUP, LLC	2405 N COURTENAY PARKWAY, SUITE 102	32953
GARY M WEISS, PA DBA WEISS & NEWBERRY MEDICAL ASSO	1355 N COURTENAY PARKWAY, SUITE E	32953
MERIT MEDICAL CARE	45 MCLEOD STREET	32953
ROCKLEDGE HMA MEDICAL GROUP LLC	255 FORTENBERRY ROAD, SUITE A1	32952
ROCKLEDGE HMA MEDICAL GROUP, LLC	255 N SYKES CREEK PARKWAY, SUITE 101	32953
RANDALL B RIGDON, LLC	270 N SYKES CREEK PARKWAY 202	32952
SPACE COAST ORTHOPAEDIC CTR	220 N SYKES CREEK PARKWAY, SUITE 200	32953
ROCKLEDGE HMA MEDICAL GROUP, LLC	150 N SYKES CREEK PARKWAY, SUITE 102	32953
G LEONARD GIOIA, MD, PA	650 S COURTENAY PARKWAY, SUITE 102	32952
AMBULATORY SURGICAL CARE AND EYE CLINIC OF MERRITT	1045 N COURTENAY PARKWAY	32953
ROCKLEDGE HMA MEDICAL GROUP, LLC	255 FORTENBERRY ROAD, SUITE A	32952
FRANK X. VENZARA, MD, PA	280 SYKES CREEK PARKWAY N, SUITE A	32953
AGGARWAL MEDICAL ASSOCIATES	1045 N COURTENAY PARKWAY	32953
ASH DERMATOLOGY AND SKIN CANCER	50 CATALINA ISLE DRIVE	32953
RICARDO A. SERRANO, MD	30 FORTENBERRY ROAD	32952
HEALTH FIRST MEDICAL GROUP	50 FORTENBERRY ROAD	32952
ATLANTIC COAST MEDICAL-M.I.	255 FORTENBERRY ROAD, SUITE B-6	32952
HEALTH FIRST MEDICAL GROUP	255 BORMAN DRIVE	32952
COURTENAY SPRINGS VILLAGE	1100 COURTENAY PARKWAY S	32952
ARMANDO F DELGADO, MD	1395 N COURTENAY PARKWAY, SUITE 210	32953
THE PAIN INSTITUTE DBA FLORIDA PAIN	595 N COURTENAY PARKWAY, SUITE 101	32953
HEALTHY LIVING CLINIC, LLC	375 S COURTENAY PARKWAY, SUITE 7A	32952
ADVANCED SURGICAL & WEIGHT LOSS INSTITUTE	375 S COURTENAY PARKWAY, SUITE 7-A	32952
LEON A COHEN, MD, PA	375 S COURTENAY PARKWAY, SUITE 1	32952
GREGORY A KIRK, MD, LLC	258 FORTENBERRY ROAD	32952
MERRITT ISLAND FAMILY DENTISTRY	190 S SYKES CREEK PARKWAY, SUITE 2	32952
CALLENBERGER ORTHOPEDIC SPECIALISTS LLC	205 N BANANA RIVER DRIVE, SUITE 103	32952
TEPAS HEALTHCARE, LLC	215 CONE ROAD	32952
ARMANDO O MARTINEZ, MD	1395 N COURTENAY PARKWAY, SUITE 200	32953
MEDICAL ASSOCIATES OF BREVARD/SPACE COAST VASCULAR	1395 N COURTENAY PARKWAY, SUITE 206	32953
SUSAN C FAIR, DO PA	595 N COURTENAY PARKWAY	32953
SPACE COAST SURGERY CENTER	595 N COURTENAY PARKWAY, SUITE 103	32953
MERRITT ISLAND SURGERY CENTER	220 N SYKES CREEK PARKWAY, SUITE 101	32953
HEALTH CENTER OF MERRITT ISLAND THE	500 CROCKETT BOULEVARD	32953
ISLAND HEALTH AND REHABILITATION CENTER	125 ALMA BOULEVARD	32953
MERRITT MEDICAL CENTER	2400 N COURTENAY PARKWAY	32953
NEO LASEO MEDICAL SPA	1045 N COURTENAY PARKWAY	32953

Facility Name	Address	Zip Code
ATLANTIC COAST PEDIATRICS, MD, PA	270 N SYKES CREEK PARKWAY, SUITE 108	32953
TANYA ZIADJE, MD, LLC	255 N SYKES CREEK PARKWAY	32953
THE BACK CENTER	650 S COURTENAY PARKWAY, SUITE 100	32952
CANCER CARE CENTERS OF BREVARD	215 CONE ROAD	32952
SPACE COAST MEDICAL ASSOCIATES	225 CONE ROAD	32952
NEUROLOGIC ASSOCIATES OF CENT BREVARD	1395 COURTENAY PARKWAY, SUITE 106	32953
SHANE C HERNESMAN, MD	1395 N COURTENAY PARKWAY, SUITE 100	32953
STEPHANE NAOUOFF, MD	1395 N COURTENAY PARKWAY 100	32953
ARNOLD PRIMARY CARE	1395 N COURTENAY PARKWAY, SUITE 207	32953
JORGE J LEAL, MD, PA	825 COURTENAY PARKWAY N	32953
SPACE COAST RHEUMATOLOGY-MISLAND	40 FORTENBERRY	32952

Law Enforcement Facilities (Points)

Facility Name	Address	Zip Code
BREVARD COUNTY SHERIFF'S OFFICE - EAST PRECINCT	2575 N COURTENAY PKWY	32953

Mobile Home Parks in Florida

Facility Name	Address	Zip Code
RIVER HAVEN MHP	945 TROPICAL TR	32953
DETLEF SCHELLIN MOBILE HOME PARK	3100 S TROPICAL TRL	32952
RIVER PALMS MOBILE HOME PARK	200 S BANANA RIVER DR	32952
IMPERIAL TRAILER CT	250 IMPERIAL ST	32952
MERRITT ISLAND VILLAGE RESORT	327 SILVER OAKS AVENUE	32952
MERRITT COUNTRY MHP	2455 N TROPICAL TR	32953

Public and Private Schools (Points)

Facility Name	Address	Zip Code
LEWIS CARROLL ELEMENTARY SCHOOL	1 SKYLINE BOULEVARD	32953
COURTENAY CHRISTIAN SCHOOL	700 S COURTENAY PKWY	32952
BREVARD COUNTY SCHOOL DISTRICT - ROTARY PARK	1899 COURTENAY PKWY S	32952
AUDUBON ELEMENTARY SCHOOL	1201 N BANANA RIVER DR	32952
MILA ELEMENTARY SCHOOL	288 W MERRITT AVENUE	32953
WEBSTER UNIVERSITY	150 N SYKES CREEK PKWY	32953
ROBERT L. STEVENSON ELEMENTARY	1450 MARTIN BLVD	32955
KLD LEARNING CENTER	85 RICHLAND AVENUE	32955
SUNDANCE RANCH CHRISTIAN ACADEMY	390 S COURTENAY PARKWAY	32952
FAITH LUTHERAN PRESCHOOL & DAY CARE	290 E MERRITT AVENUE	32953
BREVARD PRIVATE ACADEMY	508 S PLUMOSA ST	32952
TROPICAL ELEMENTARY SCHOOL	885 S COURTENAY PKY	32952
THOMAS JEFFERSON MIDDLE SCHOOL	1275 S COURTENAY PKY	32952
GARDENDALE ELEMENTARY MAGNET SCHOOL	301 GROVE BLVD	32953
MERRITT ISLAND HIGH SCHOOL	100 MUSTANG WAY	32953
EDGEWOOD JR/SR HIGH SCHOOL	180 E MERRITT AVE	32953
LIGHTHOUSE CHRISTIAN ACADEMY	175 CONE RD	32952
DIVINE MERCY CATHOLIC SCHOOL	1940 NORTH COURTENAY PARKWAY	32953
LIGHTHOUSE CHRISTIAN ACADEMY	1250 N BANANA RIVER DR	32952
MERRITT ISLAND CHRISTIAN SCHOOL	140 MAGNOLIA AVENUE	32952

Religious Centers (Points)

Facility Name	Address	Zip Code
FAITH PRESBYTERIAN CHURCH	1900 S TROPICAL TRAIL	32952
MERRITT ASSEMBLY OF GOD	165 N GROVE STREET	32953
MERRITT ISLAND PRESBYTERIAN	600 S TROPICAL TRAIL	32952
CHURCH OF CHRIST N COURTENAY	2455 N COURTENAY PARKWAY	32953
ISLAND COMMUNITY CHURCH	1000 N BANANA RIVER DRIVE	32952
ALTAR CHURCH OF CHRISTIANITY	1435 TROPICAL TRL N	32953
COMMUNITY CHURCH OF THE NAZARENE	400 CROCKETT BOULEVARD	32953

Facility Name	Address	Zip Code
ISLANDER ALLIANCE CHURCH	2450 N COURTENAY PARKWAY	32953
EMMANUEL BAPTIST CHURCH	1250 SOUTH COURTENAY PARKWAY	32952
CHURCH OF DELIVERANCE	1350 TROPICAL TRL N	32953
GREATER MT. OLIVE - MERRITT ISLAND	1212 N TROPICAL TRAIL	32953
FIRST BAPTIST CHURCH MERRITT ISLAND	140 MAGNOLIA AVENUE	32952
REDEEMER LUTHERAN CHURCH-WELS	560 SOUTH TROPICAL TRAIL	32952
JEHOVAH'S WITNESSES	520 S PLUMOSA STREET	32952
CALVARY MEMORIAL EVANGELICAL FREE CHURCH	2575 NORTH COURTENAY PARKWAY	32953
RIVER OF LIFE ASSEMBLY OF GOD	1890 N COURTENAY PARKWAY	32953
LIGHTHOUSE CHRISTIAN CHURCH	1250 N BANANA RIVER DRIVE	32952
HOUSE OF PRAYER	1795 WORLEY AVE	32952
CHURCH OF GOD	737 S BANANA RIVER DRIVE	32952
MT TABER PRIMITIVE BAPTIST CHURCH	333 LUCAS ROAD	32953
MERRITT ISLAND WESLEYAN CHURCH	210 NORTH TROPICAL TRAIL	32953
GRACE UNITED METHODIST CHURCH	65 NEEDLE BOULEVARD	32953
ANTIOCH BAPTIST CHURCH	66 E MERRITT AVENUE	32953
MERRITT ISLAND CHURCH OF CHRIST	512 SOUTH PLUMOSA STREET	32952
THE FATHERS HOUSE CHRISTIAN CENTER	1353 NORTH COURTENAY PARKWAY SUITE U	32953
WORD OF LIFE CHRISTIAN CHURCH	700 SOUTH COURTENAY PARKWAY	32952
FAITH LUTHERAN CHURCH	280 E MERRITT AVENUE	32953
SAINT VLADIMIR UKRANIAS ORTHODOX CHURCH	120 VENETIAN WAY	32953
DIVINE MERCY CATHOLIC CHURCH	1940 NORTH COURTENAY PARKWAY	32953
GREATER MT ZION MISSIONARY	1390 N TROPICAL TRAIL	32953
FIRST CHRISTIAN CHURCH OF MERRITT ISLAND	1750 NORTH COURTENAY PARKWAY	32953
GEORGIANNA UNITED METHODIST	3925 S TROPICAL TRAIL	32952
EAST COAST CHRISTIAN CENTER	680 N COURTENAY PKWY	32953

Social Services (Geocoded)

Facility Name	Address	Zip Code
BREVARD COUNSELING, LLC	335 HIBISCUS AVENUE	32953

US Census Places

Facility Name
Cocoa
South Patrick Shores
Melbourne
Cocoa Beach
Indian Harbour Beach
Sharpes
Satellite Beach
Rockledge
Merritt Island

Veteran Organizations and Facilities (Points)

Facility Name	Address	Zip Code
AMERICAN LEGION POST 344	400 SOUTH SYKES CREEK PKWY	32952
DISABLED AMERICAN VETERANS CHAPTER 123	400 SOUTH SYKES CREEK PKWY	32952

Block Groups

The following Census Block Groups were used to calculate demographics for this report.

1990 Census Block Groups

120090694005, 120090694004, 120090699023, 120090698022, 120090698021, 120090696004, 120090694001, 120090691002, 120090693002, 120090699022, 120090697002, 120090697003, 120090696001, 120090695001, 120090695003, 120090691001, 120090692002, 120090698012, 120090699024, 120090698011, 120090697001, 120090694002, 120090693003, 120090694003, 120090695002, 120090698023, 120090692001, 120090693001, 120090699021, 120090696002

2000 Census Block Groups

120090699022, 120090698012, 120090694001, 120090693001, 120090693002, 120090694003, 120090697001, 120090696002, 120090691001, 120090699021, 120090695003, 120090699023, 120090696001, 120090698011, 120090695001, 120090691002, 120090694002, 120090698023, 120090692002, 120090694004, 120090697002, 120090695002, 120090698021, 120090692001, 120090698022

2010 Census Block Groups

120090698023, 120090691001, 120090699022, 120090716002, 120090691002, 120090697001, 120090694003, 120090697002, 120090698022, 120090716003, 120090698021, 120090693002, 120090716001, 120090694001, 120090693001, 120090698011, 120090699023, 120090692001, 120090716004, 120090698012, 120090699021, 120090694002, 120090692002

2017 Census Block Groups

120090698023, 120090692002, 120090691002, 120090698011, 120090699021, 120090699023, 120090716002, 120090694002, 120090698012, 120090699022, 120090697002, 120090698022, 120090693001, 120090693002, 120090716004, 120090694003, 120090716003, 120090698021, 120090694001, 120090697001, 120090716001, 120090691001, 120090692001

Data Sources

Area

The geographic area of the community based on a user-specified community boundary or area of interest (AOI) boundary.

Jurisdiction

Jurisdiction(s) includes local government boundaries that intersect the community or AOI boundary.

Demographic Data

Demographic data reported under the headings General Population Trends, Race and Ethnicity Trends, Age Trends, Income Trends, Educational Attainment Trends, Language Trends, and Housing Trends is from the U.S. Decennial Census (1990, 2000) and the American Community Survey (ACS) 5-year estimates from 2006-2010 and 2013-2017. The data was gathered at the block group level for user-specified community boundaries and AOIs, and at the county level for counties. Depending on the dataset, the data represents 100% counts (Census Summary File 1) or sample-based information (Census Summary File 3 or ACS).

About the Census Data:

User-specified community boundaries and AOIs do not always correspond precisely to block group boundaries. In these instances, adjustment of the geographic area and data for affected block groups is required to estimate the actual population. To improve the accuracy of such estimates in the SDR report, the census block group data was adjusted to exclude all census blocks with a population of two or fewer. These areas were eliminated from the corresponding years' block groups. Next, the portion of the block group that lies outside of the community or AOI boundary was removed. The demographics within each block group were then recalculated, assuming an equal area distribution of the population. Note that there may be areas where there is no population.

Use caution when comparing the 100% count data (Decennial Census) to the sample-based data (ACS). In any given year, about one in 40 or 2.5% of U.S. households will receive the ACS questionnaire. Over any five-year period, about one in eight households will receive the questionnaire, as compared to about one in six that received the long form questionnaire for the Decennial Census 2000. (Source: <http://mcdc.missouri.edu/pub/data/acs/Readme.shtml>) The U.S. Census Bureau provides help with this process:
<https://www.census.gov/programs-surveys/acs/guidance/comparing-acs-data/2017.html>

Use caution when interpreting changes in Race and Ethnicity over time. Starting with the 2000 Decennial Census, respondents were given a new option of selecting one or more race categories. Also in 2000, the placement of the question about Hispanic origin changed, helping to increase responsiveness to the Hispanic-origin question. Because of these and other changes, the 1990 data on race and ethnicity are not directly comparable with data from later censuses. (Source: <http://www.census.gov/prod/2001pubs/c2kbr01-1.pdf>;
<http://www.census.gov/pred/www/rpts/Race%20and%20Ethnicity%20FINAL%20report.pdf>)

The "Minority" calculations are derived from Census and ACS data using both the race and ethnicity responses. On this report, "Minority" refers to individuals who list a race other than White and/or list their ethnicity as Hispanic/Latino. In other words, people who are multi-racial, any single race other than White, or Hispanic/Latino of any race are considered minorities.

Disability data is not included in the 2010 Decennial Census, or the 2006-2010 ACS. This data is available in the 2013-2017 ACS.

Because of changes made to the Census and ACS questions between 1990 and 2017, disability variables should not be compared from year to year. For example: 1) With the 1990 data the disabilities are listed as a "work disability" while this distinction is not made with 2000 or 2017 ACS data; 2) The 2017 ACS data includes the institutionalized population (e.g. persons in prisons and group homes), while this population is not included in 1990 or 2000; 3) the age groupings changed over the years.

Please take the following two concerns into account when viewing this data: 1) With the 1990 data the disabilities are listed as a "work disability" while this distinction is not made with 2000 or 2017 ACS data; 2) The 2017 ACS data includes the institutionalized population (e.g. persons in prisons and group homes), while this population is not included in 1990 or 2000.

The category Bachelor's Degree or Higher under the heading Educational Attainment Trends is a subset of the category High School Graduate or Higher.

Income of households. This includes the income of the householder and all other individuals 15 years old and over in the household, whether they are related to the householder or not. Because many households consist of only one person, average household income is usually less than average family income.

Income of families. In compiling statistics on family income, the incomes of all members 15 years old and over related to the householder are summed and treated as a single amount.

Age Trends median age for 1990 is not available.

Land Use Data

The Land Use information Indicates acreages and percentages for the generalized land use types used to group parcel-specific, existing land use assigned by the county property appraiser office according to the Florida Department of Revenue land use codes.

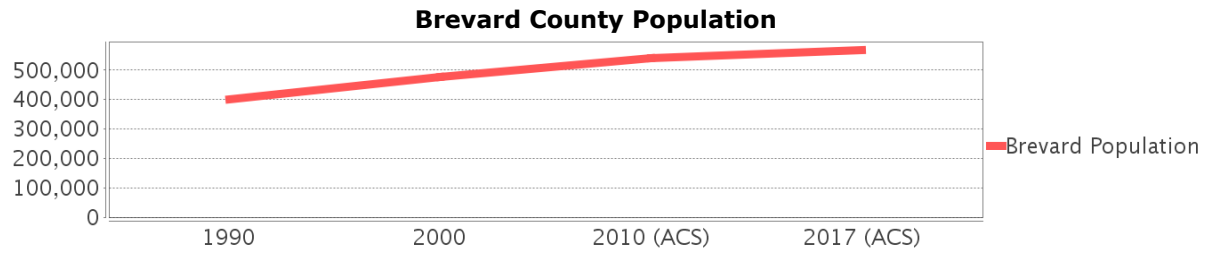
Community Facilities Data

- Assisted Rental Housing Units - Identifies multifamily rental developments that receive funding assistance under federal, state, and local government programs to offer affordable housing as reported by the Shimberg Center for Housing Studies, University of Florida.
- Mobile Home Parks - Identifies approved or acknowledged mobile home parks reported by the Florida Department of Business and Professional Regulation and Florida Department of Health.
- Migrant Camps - Identifies migrant labor camp facilities inspected by the Florida Department of Health.
- Group Care Facilities - Identifies group care facilities inspected by the Florida Department of Health.
- Community Center and Fraternal Association Facilities - Identifies facilities reported by multiple sources.
- Law Enforcement Correctional Facilities - Identifies facilities reported by multiple sources.
- Cultural Centers - Identifies cultural centers including organizations, buildings, or complexes that promote culture and arts (e.g., aquariums and zoological facilities; arboreta and botanical gardens; dinner theaters; drive-ins; historical places and services; libraries; motion picture theaters; museums and art galleries; performing arts centers; performing arts theaters; planetariums; studios and art galleries; and theater producers stage facilities) reported by multiple sources.
- Fire Department and Rescue Station Facilities - Identifies facilities reported by multiple sources.
- Government Buildings - Identifies local, state, and federal government buildings reported by multiple sources.
- Health Care Facilities - Identifies health care facilities including abortion clinics, dialysis clinics, medical doctors, nursing homes, osteopaths, state laboratories/clinics, and surgicenters/walk-in clinics reported by the Florida Department of Health.
- Hospital Facilities - Identifies hospital facilities reported by multiple sources.
- Law Enforcement Facilities - Identifies law enforcement facilities reported by multiple sources.
- Parks and Recreational Facilities - Identifies parks and recreational facilities reported by multiple sources.
- Religious Center Facilities - Identifies religious centers including churches, temples, synagogues, mosques, chapels, centers, and other types of religious facilities reported by multiple sources.
- Private and Public Schools - Identifies private and public schools reported by multiple sources.
- Social Service Centers - Identifies social service centers reported by multiple sources.
- Veteran Organizations and Facilities

Brevard County Demographic Profile

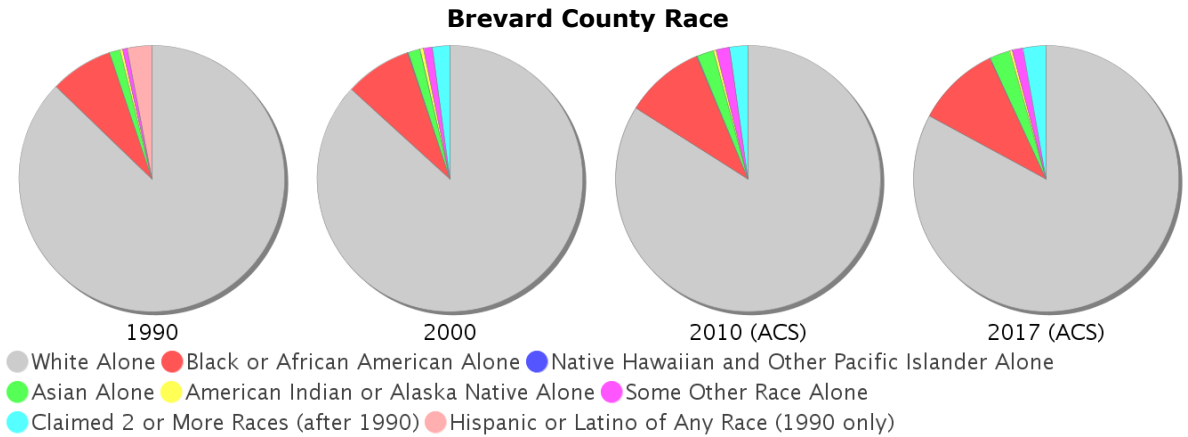
General Population Trends - Brevard

Description	1990	2000	2010 (ACS)	2017 (ACS)
Total Population	398,978	476,230	540,583	568,183
Total Households	161,365	198,195	220,871	227,223
Average Persons per Acre	0.574	0.705	0.80	0.841
Average Persons per Household	2.473	2.352	2.00	2.47
Average Persons per Family	2.93	2.904	3.025	3.157
Males	197,163	232,983	264,955	277,666
Females	201,815	243,247	275,628	290,517



Race and Ethnicity Trends - Brevard

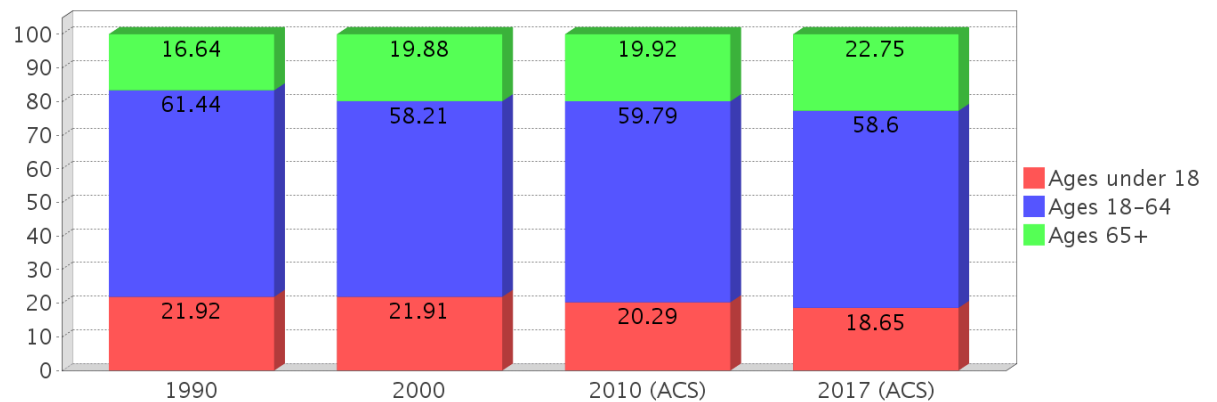
Description	1990	2000	2010 (ACS)	2017 (ACS)
White Alone	358,391 (89.83%)	413,023 (86.73%)	453,634 (83.92%)	470,794 (82.86%)
Black or African American Alone	31,417 (7.87%)	38,680 (8.12%)	52,758 (9.76%)	57,728 (10.16%)
Native Hawaiian and Other Pacific Islander Alone	(NA)	278 (0.06%)	319 (0.06%)	421 (0.07%)
Asian Alone	5,187 (1.30%)	7,122 (1.50%)	11,035 (2.04%)	13,843 (2.44%)
American Indian or Alaska Native Alone	1,369 (0.34%)	2,070 (0.43%)	1,947 (0.36%)	1,945 (0.34%)
Some Other Race Alone	2,422 (0.61%)	4,964 (1.04%)	8,928 (1.65%)	7,410 (1.30%)
Claimed 2 or More Races	(NA)	10,093 (2.12%)	11,962 (2.21%)	16,042 (2.82%)
Hispanic or Latino of Any Race	12,261 (3.07%)	21,902 (4.60%)	40,925 (7.57%)	55,042 (9.69%)
Not Hispanic or Latino	386,717 (96.93%)	454,328 (95.40%)	499,658 (92.43%)	513,141 (90.31%)
Minority	121,910 (30.56%)	77,898 (16.36%)	121,910 (22.55%)	140,474 (24.72%)



Age Trends - Brevard

Description	1990	2000	2010 (ACS)	2017 (ACS)
Under Age 5	6.61%	5.18%	4.99%	4.72%
Ages 5-17	15.31%	16.73%	15.30%	13.93%
Ages 18-21	4.92%	4.23%	4.73%	4.31%
Ages 22-29	12.48%	7.29%	8.25%	8.90%
Ages 30-39	16.19%	13.96%	10.50%	10.40%
Ages 40-49	11.81%	15.55%	15.25%	11.44%
Ages 50-64	16.04%	17.19%	21.07%	23.54%
Age 65 and Over	16.64%	19.88%	19.92%	22.75%
-Ages 65-74	10.82%	10.94%	10.41%	12.23%
-Ages 75-84	4.73%	7.04%	7.17%	7.47%
-Age 85 and Over	1.09%	1.90%	2.34%	3.04%
Median Age	NA	41	45	47

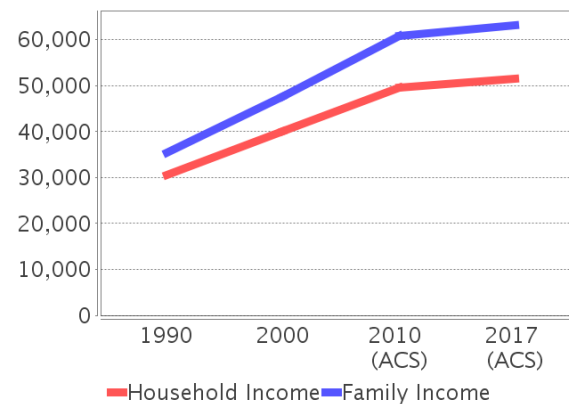
Percentage Population by Age Group - Brevard



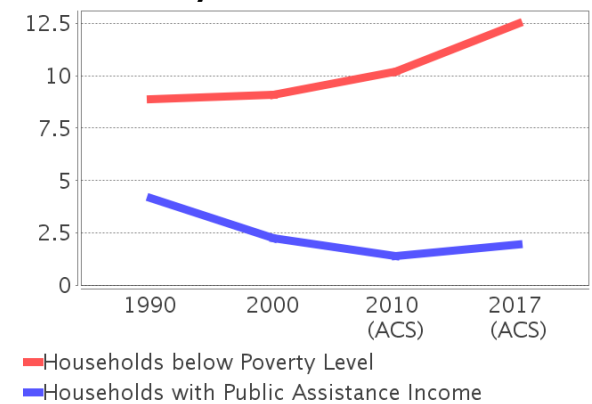
Income Trends - Brevard

Description	1990	2000	2010 (ACS)	2017 (ACS)
Median Household Income	\$30,534	\$40,099	\$49,523	\$51,536
Median Family Income	\$35,402	\$47,571	\$60,842	\$63,114
Population below Poverty Level	9.13%	9.47%	10.52%	13.37%
Households below Poverty Level	8.89%	9.11%	10.20%	12.49%
Households with Public Assistance Income	4.18%	2.26%	1.38%	1.95%

Income Trends



Poverty and Public Assistance



Disability Trends - Brevard

See the Data Sources section below for an explanation about the differences in disability data among the various years.

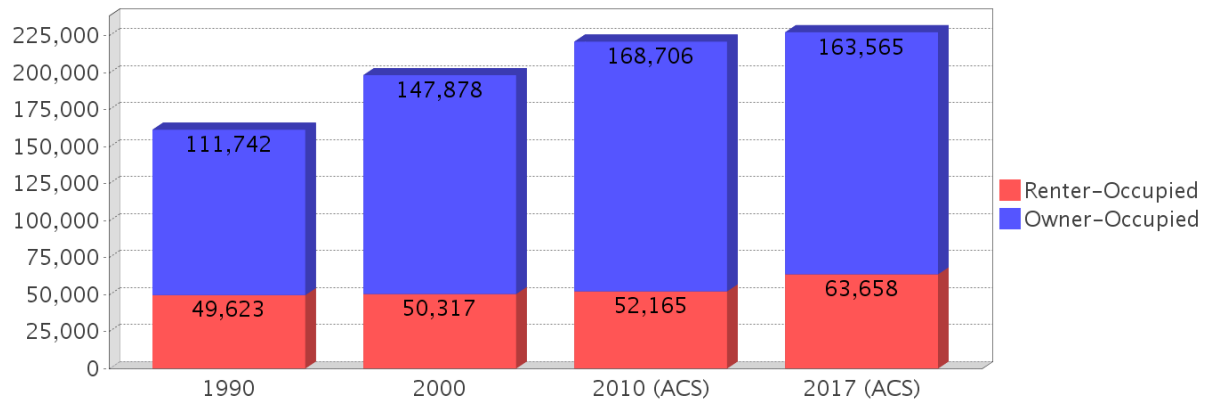
Description	1990	2000	2010 (ACS)	2017 (ACS)
Population 16 To 64 Years with a disability	21,900 (6.99%)	56,763 (12.82%)	NA (NA)	NA (NA)
Population 20 To 64 Years with a disability	NA (NA)	NA (NA)	NA (NA)	38,135 (11.95%)

Educational Attainment Trends - Brevard

Age 25 and Over

Description	1990	2000	2010 (ACS)	2017 (ACS)
Less than 9th Grade	14,336 (5.17%)	11,314 (3.33%)	9,471 (2.44%)	10,254 (2.45%)
9th to 12th Grade, No Diploma	34,651 (12.49%)	35,102 (10.33%)	27,078 (6.97%)	24,309 (5.80%)
High School Graduate or Higher	228,359 (82.34%)	293,322 (86.34%)	352,024 (90.59%)	384,345 (91.75%)
Bachelor's Degree or Higher	56,574 (20.40%)	80,020 (23.55%)	101,847 (26.21%)	118,861 (28.37%)

Housing Tenure - Brevard



Language Trends - Brevard

Age 5 and Over

Description	1990	2000	2010 (ACS)	2017 (ACS)
Speaks English Well	5,377 (1.44%)	7,463 (1.65%)	9,800 (1.91%)	10,921 (2.02%)
Speaks English Not Well	NA (NA)	3,748 (0.83%)	4,813 (0.94%)	6,157 (1.14%)
Speaks English Not at All	NA (NA)	658 (0.15%)	1,126 (0.22%)	1,449 (0.27%)
Speaks English Not Well or Not at All	3,139 (0.84%)	4,406 (0.98%)	5,939 (1.16%)	7,606 (1.40%)

Housing Trends - Brevard

Description	1990	2000	2010 (ACS)	2017 (ACS)
Total	185,150	222,072	267,036	274,602
Units per Acre	0.266	0.329	0.395	0.407
Single-Family Units	107,123	146,810	182,849	190,403
Multi-Family Units	36,002	49,971	60,169	62,666
Mobile Home Units	17,130	24,092	23,310	20,959
Owner-Occupied Units	111,742	147,878	168,706	163,565
Renter-Occupied Units	49,623	50,317	52,165	63,658
Vacant Units	23,785	23,877	46,165	47,379
Median Housing Value	\$74,600	\$87,600	\$186,900	\$162,400
Occupied Housing Units w/No Vehicle	8,788 (5.45%)	10,579 (5.34%)	9,967 (4.51%)	12,725 (5.60%)

County Data Sources

Demographic data reported is from the U.S. Decennial Census (1990, 2000) and the American Community Survey (ACS) 5-year estimates from 2006-2010 and 2013-2017. The data was gathered at the county level. Depending on the dataset, the data represents 100% counts (Census Summary File 1) or sample-based information (Census Summary File 3 or ACS).

About the Census Data:

Use caution when comparing the 100% count data (Decennial Census) to the sample-based data (ACS). In any given year, about one in 40 or 2.5% of U.S. households will receive the ACS questionnaire. Over any five-year period, about one in eight households will receive the questionnaire, as compared to about one in six that received the long form questionnaire for the Decennial Census 2000. (Source: <http://mcdc.missouri.edu/pub/data/acs/Readme.shtml>) The U.S. Census Bureau provides help with this process:

<https://www.census.gov/programs-surveys/acs/guidance/comparing-acs-data/2017.html>

Use caution when interpreting changes in Race and Ethnicity over time. Starting with the 2000 Decennial Census, respondents were given a new option of selecting one or more race categories. Also in 2000, the placement of the question about Hispanic origin changed, helping to increase responsiveness to the Hispanic-origin question. Because of these and other changes, the 1990 data on race and ethnicity are not directly comparable with data from later censuses. (Source: <http://www.census.gov/prod/2001pubs/c2kbr01-1.pdf>;
<http://www.census.gov/pred/www/rpts/Race%20and%20Ethnicity%20FINAL%20report.pdf>)

The "Minority" calculations are derived from Census and ACS data using both the race and ethnicity responses. On this report, "Minority" refers to individuals who list a race other than White and/or list their ethnicity as Hispanic/Latino. In other words, people who are multi-racial, any single race other than White, or Hispanic/Latino of any race are considered minorities.

Disability data is not included in the 2010 Decennial Census, or the 2006-2010 ACS. This data is available in the 2013-2017 ACS.

Because of changes made to the Census and ACS questions between 1990 and 2017, disability variables should not be compared from year to year. For example: 1) With the 1990 data the disabilities are listed as a "work disability" while this distinction is not made with 2000 or 2017 ACS data; 2) The 2017 ACS data includes the institutionalized population (e.g. persons in prisons and group homes), while this population is not included in 1990 or 2000; 3) the age groupings changed over the years.

Please take the following two concerns into account when viewing this data: 1) With the 1990 data the disabilities are listed as a "work disability" while this distinction is not made with 2000 or 2017 ACS data; 2) The 2017 ACS data includes the institutionalized population (e.g. persons in prisons and group homes), while this population is not included in 1990 or 2000.

source:

<https://www.census.gov/people/disability/methodology/acs.html>

<https://www.census.gov/population/www/cen2000/90vs00/index.html>

The category Bachelor's Degree or Higher under the heading Educational Attainment Trends is a subset of the category High School Graduate or Higher.

Metadata

- Community and Fraternal Centers https://etdmpub.florida-estat.org/metadata/gc_communitycenter.htm
- Correctional Facilities in Florida https://etdmpub.florida-estat.org/metadata/gc_correctional.htm
- Cultural Centers in Florida https://etdmpub.florida-estat.org/metadata/gc_culturecenter.htm
- Fire Department and Rescue Station Facilities in Florida https://etdmpub.florida-estat.org/metadata/gc_firestat.htm
- Local, State, and Federal Government Buildings in Florida https://etdmpub.florida-estat.org/metadata/gc_govbuild.htm
- Florida Health Care Facilities https://etdmpub.florida-estat.org/metadata/gc_health.htm
- Hospital Facilities in Florida https://etdmpub.florida-estat.org/metadata/gc_hospitals.htm
- Law Enforcement Facilities in Florida https://etdmpub.florida-estat.org/metadata/gc_lawenforce.htm
- Florida Parks and Recreational Facilities https://etdmpub.florida-estat.org/metadata/gc_parks.htm
- Religious Centers https://etdmpub.florida-estat.org/metadata/gc_religion.htm
- Florida Public and Private Schools https://etdmpub.florida-estat.org/metadata/gc_schools.htm
- Social Service Centers https://etdmpub.florida-estat.org/metadata/gc_socialservice.htm
- Assisted Rental Housing Units in Florida https://etdmpub.florida-estat.org/metadata/gc_assisted_housing.htm
- Group Care Facilities <https://etdmpub.florida-estat.org/metadata/groupcare.htm>
- Mobile Home Parks in Florida https://etdmpub.florida-estat.org/metadata/gc_mobilehomes.htm
- Migrant Camps in Florida <https://etdmpub.florida-estat.org/metadata/migrant.htm>
- Veteran Organizations and Facilities https://etdmpub.florida-estat.org/metadata/gc_veterans.htm
- Generalized Land Use - Florida DOT District 5 https://etdmpub.florida-estat.org/metadata/d5_lu_gen.htm
- Census Block Groups in Florida https://etdmpub.florida-estat.org/metadata/e2_cenacs_cci.htm
- 1990 Census Block Groups in Florida https://etdmpub.florida-estat.org/metadata/e2_cenblkgrp_1990_cci.htm
- 2000 Census Block Groups in Florida https://etdmpub.florida-estat.org/metadata/e2_cenblkgrp_2000_cci.htm
- 2010 Census Block Groups in Florida https://etdmpub.florida-estat.org/metadata/e2_cenblkgrp_2010_cci.htm