

Sociocultural Data Report

Middleburg

Area: 19.557 square miles

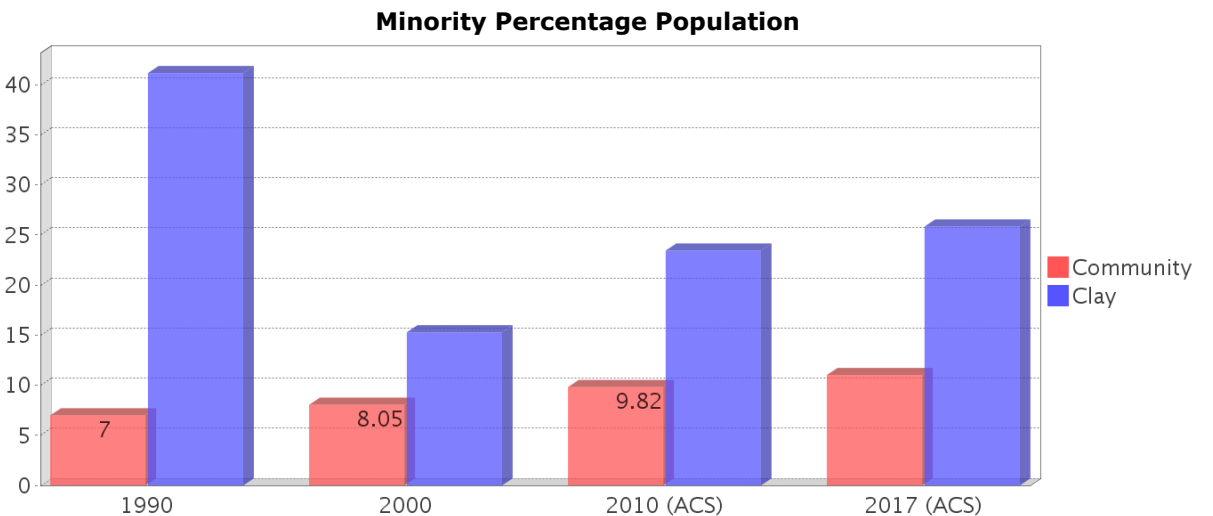
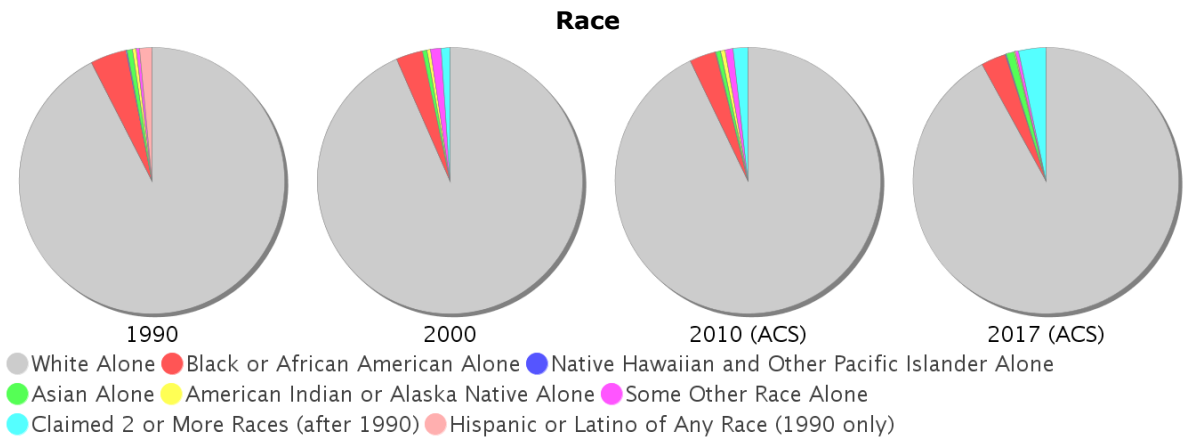
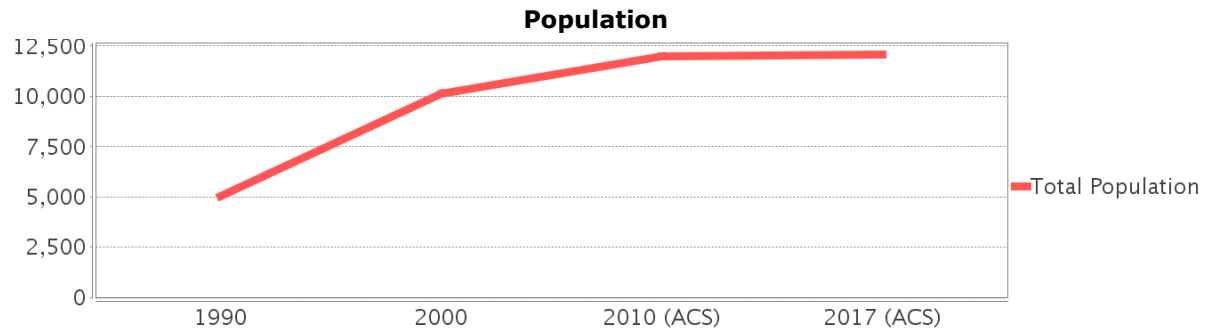
Jurisdiction(s): Cities: NA
Counties: Clay

General Population Trends

Description	1990	2000	2010 (ACS)	2017 (ACS)
Total Population	5,026	10,104	12,002	12,068
Total Households	1,686	3,386	4,154	4,053
Average Persons per Acre	0.37	0.58	0.86	0.86
Average Persons per Household	3.01	2.94	3.00	2.84
Average Persons per Family	3.28	3.29	3.00	3.32
Males	2,545	5,219	6,045	6,420
Females	2,481	4,886	5,957	5,648

Race and Ethnicity Trends

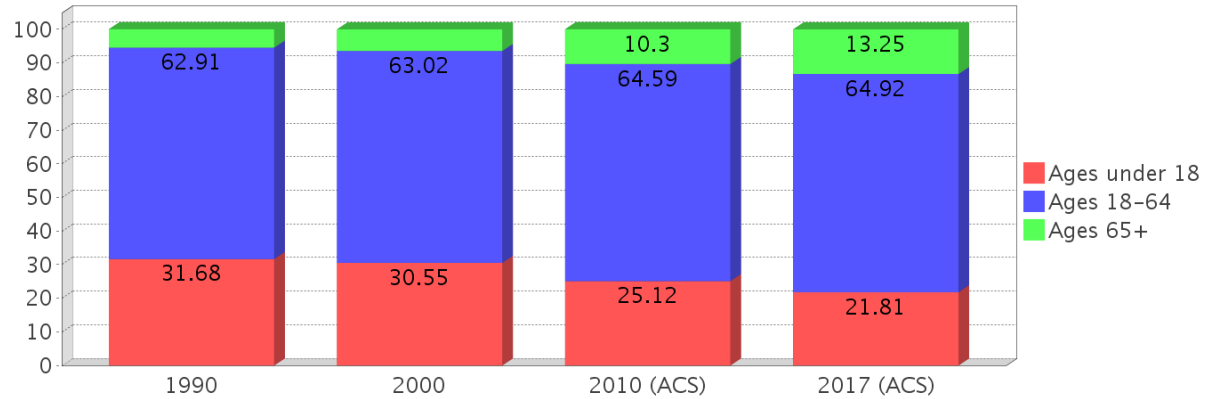
Description	1990	2000	2010 (ACS)	2017 (ACS)
White Alone	4,717 (93.85%)	9,437 (93.40%)	11,142 (92.83%)	11,102 (92.00%)
Black or African American Alone	225 (4.48%)	331 (3.28%)	387 (3.22%)	366 (3.03%)
Native Hawaiian and Other Pacific Islander Alone	6 (0.12%)	0 (0.00%)	4 (0.03%)	13 (0.11%)
Asian Alone	36 (0.72%)	58 (0.57%)	75 (0.62%)	120 (0.99%)
American Indian or Alaska Native Alone	24 (0.48%)	38 (0.38%)	67 (0.56%)	21 (0.17%)
Some Other Race Alone	18 (0.36%)	131 (1.30%)	110 (0.92%)	43 (0.36%)
Claimed 2 or More Races	NA (NA)	110 (1.09%)	217 (1.81%)	404 (3.35%)
Hispanic or Latino of Any Race	77 (1.53%)	277 (2.74%)	483 (4.02%)	372 (3.08%)
Not Hispanic or Latino	4,949 (98.47%)	9,827 (97.26%)	11,519 (95.98%)	11,696 (96.92%)
Minority	352 (7.00%)	813 (8.05%)	1,178 (9.82%)	1,330 (11.02%)



Age Trends

Description	1990	2000	2010 (ACS)	2017 (ACS)
Under Age 5	9.29%	6.39%	6.22%	6.06%
Ages 5-17	22.38%	24.16%	18.90%	15.75%
Ages 18-21	4.85%	5.06%	5.69%	5.61%
Ages 22-29	14.56%	8.59%	9.30%	8.42%
Ages 30-39	19.32%	16.83%	11.68%	13.32%
Ages 40-49	13.71%	19.04%	17.06%	10.41%
Ages 50-64	10.47%	13.51%	20.85%	27.17%
Age 65 and Over	5.43%	6.42%	10.30%	13.25%
-Ages 65-74	3.86%	4.69%	6.71%	8.44%
-Ages 75-84	1.35%	1.63%	2.95%	4.15%
-Age 85 and Over	0.22%	0.10%	0.63%	0.67%
Median Age	NA	34	40	41

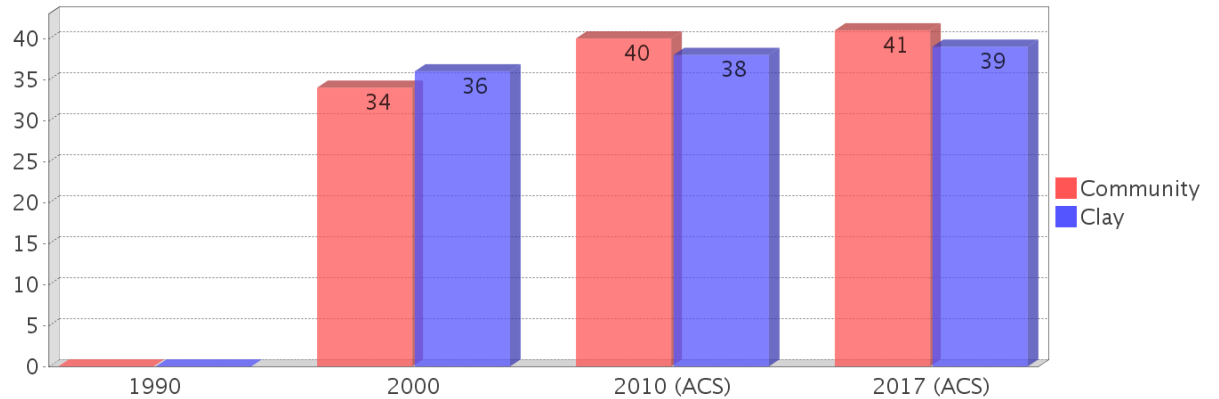
Percentage Population by Age Group



Income Trends

Description	1990	2000	2010 (ACS)	2017 (ACS)
Median Household Income	\$30,887	\$43,354	\$56,477	\$50,604
Median Family Income	\$32,194	\$44,860	\$64,375	\$54,449
Population below Poverty Level	10.47%	10.68%	9.80%	14.67%
Households below Poverty Level	10.08%	8.80%	8.96%	15.42%
Households with Public Assistance Income	2.08%	2.19%	1.32%	2.62%

Median Age Comparison

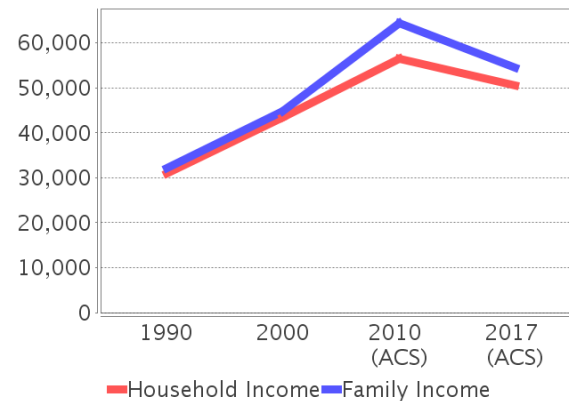


Disability Trends

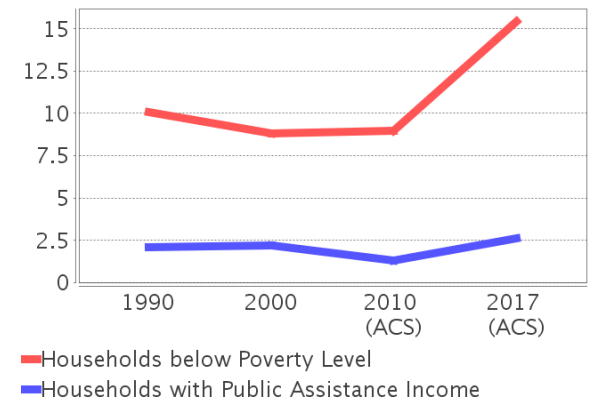
See the Data Sources section below for an explanation about the differences in disability data among the various years.

Description	1990	2000	2010 (ACS)	2017 (ACS)
Population 16 To 64 Years with a disability	297 (8.92%)	1604 (17.18%)	(NA)	(NA)
Population 20 To 64 Years with a disability	(NA)	(NA)	(NA)	1232 (16.43%)

Income Trends



Poverty and Public Assistance



Educational Attainment Trends

Age 25 and Over

Description	1990	2000	2010 (ACS)	2017 (ACS)
Less than 9th Grade	217 (7.30%)	225 (3.63%)	276 (3.45%)	309 (3.66%)
9th to 12th Grade, No Diploma	556 (18.70%)	1,008 (16.28%)	1,154 (14.42%)	671 (7.94%)
High School Graduate or Higher	2,200 (74.00%)	4,960 (80.09%)	6,576 (82.15%)	7,469 (88.39%)
Bachelor's Degree or Higher	178 (5.99%)	513 (8.28%)	699 (8.73%)	1,012 (11.98%)

Language Trends

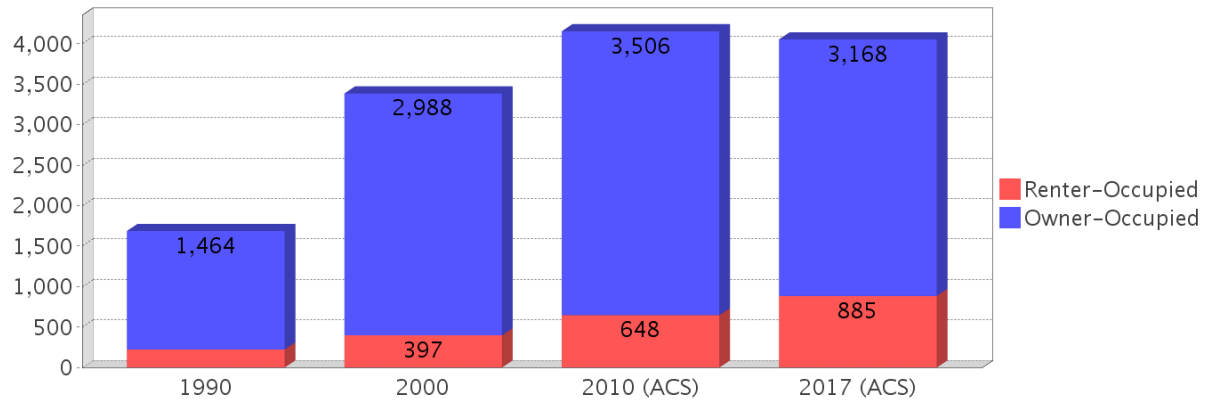
Age 5 and Over

Description	1990	2000	2010 (ACS)	2017 (ACS)
Speaks English Well	23 (0.51%)	116 (1.23%)	87 (0.80%)	12 (0.11%)
Speaks English Not Well	NA (NA)	8 (0.08%)	39 (0.36%)	29 (0.26%)
Speaks English Not at All	NA (NA)	0 (0.00%)	5 (0.05%)	0 (0.00%)
Speaks English Not Well or Not at All	19 (0.42%)	8 (0.08%)	44 (0.40%)	29 (0.26%)

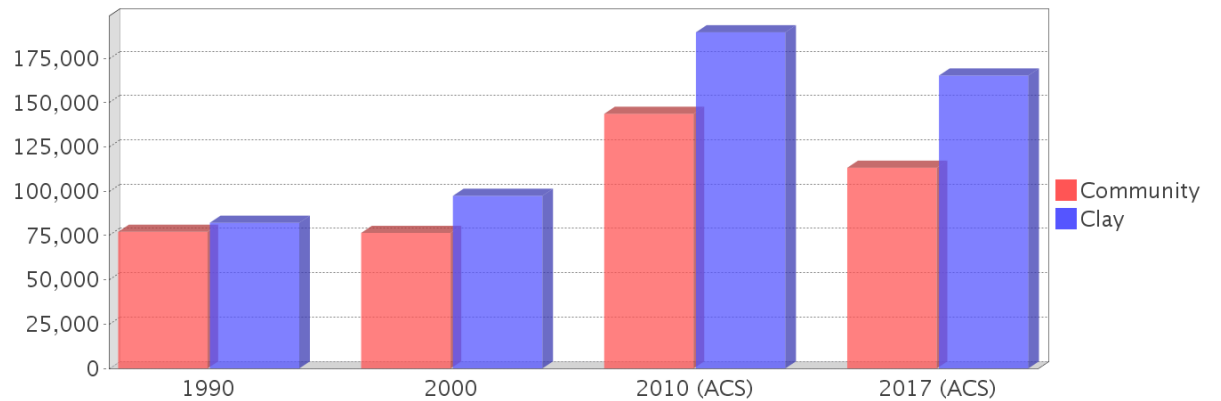
Housing Trends

Description	1990	2000	2010 (ACS)	2017 (ACS)
Total	1,780	3,583	4,506	4,689
Units per Acre	0.15	0.29	0.37	0.39
Single-Family Units	765	1,836	2,313	2,417
Multi-Family Units	43	58	52	83
Mobile Home Units	874	1,689	1,918	2,190
Owner-Occupied Units	1,464	2,988	3,506	3,168
Renter-Occupied Units	222	397	648	885
Vacant Units	94	198	353	636
Median Housing Value	\$77,100	\$76,500	\$143,700	\$113,250
Occupied Housing Units w/No Vehicle	51 (3.02%)	103 (3.04%)	60 (1.44%)	65 (1.60%)

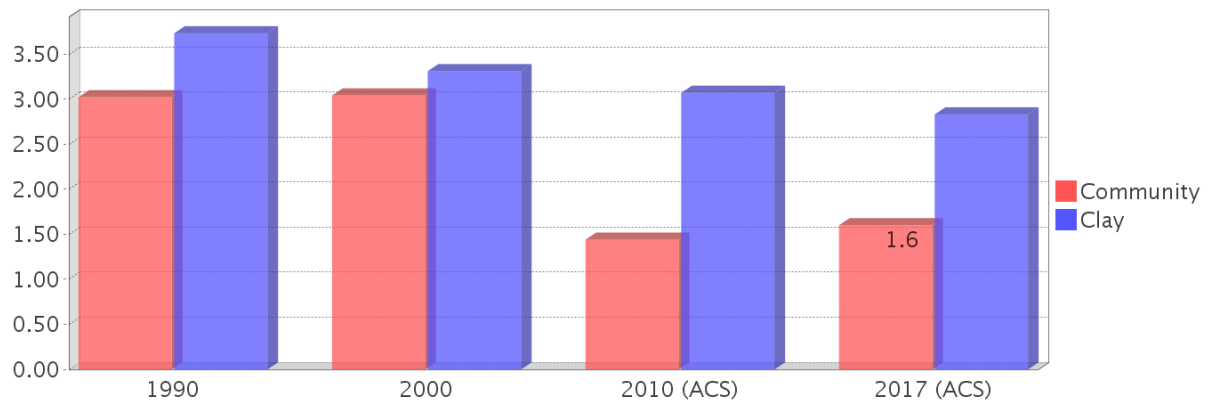
Housing Tenure



Median Housing Value Comparison

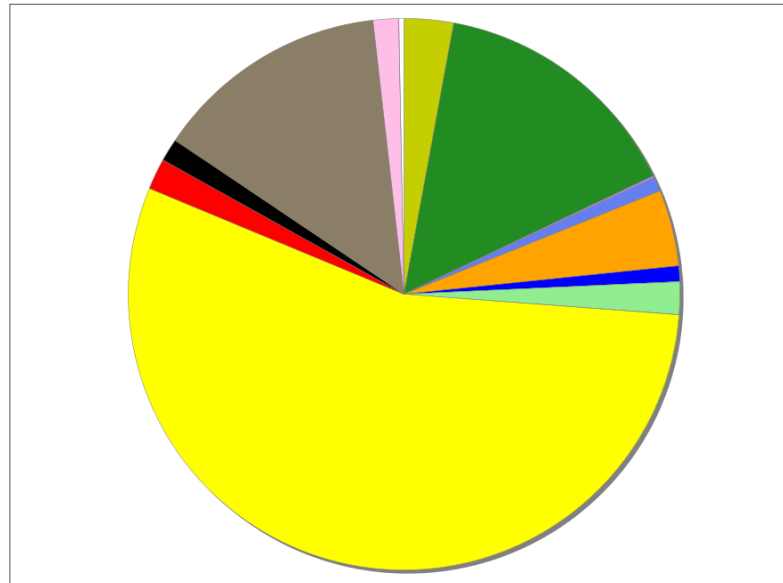


Occupied Units With No Vehicles Available



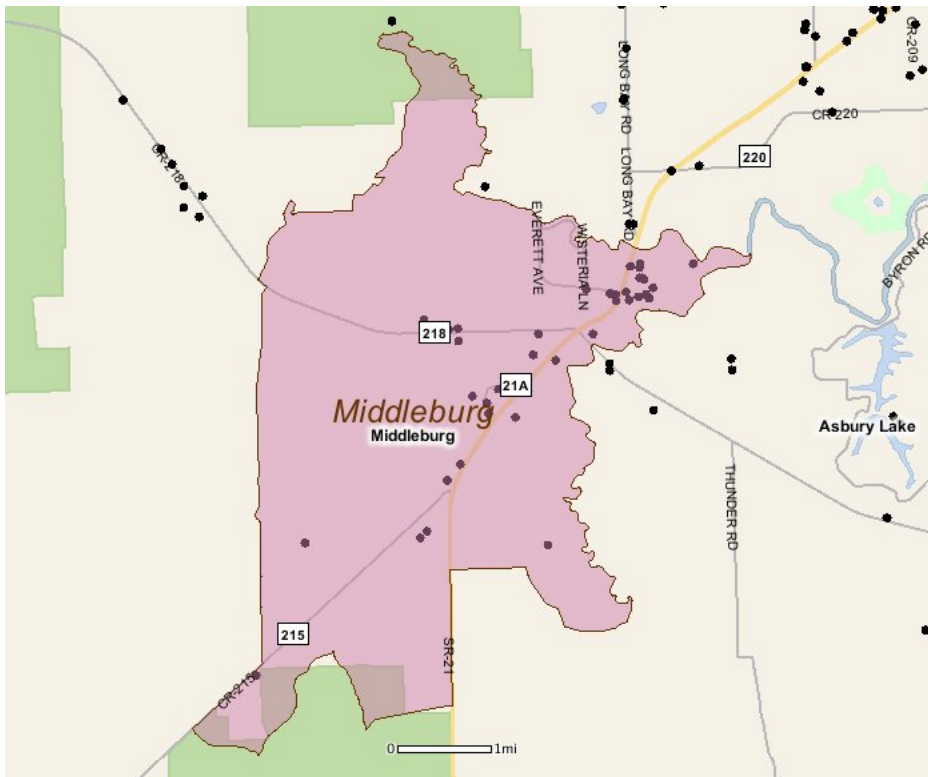
Existing Land Use

Land Use Type	Acres	Percentage
Acreage Not Zoned For Agriculture	327	2.61%
Agricultural	1,697	13.56%
Centrally Assessed	0	0.00%
Industrial	12	0.10%
Institutional	93	0.74%
Mining	0	0.00%
Other	505	4.03%
Public/Semi-Public	101	0.81%
Recreation	219	1.75%
Residential	6,206	49.58%
Retail/Office	205	1.64%
Row	150	1.20%
Vacant Residential	1,555	12.42%
Vacant Nonresidential	170	1.36%
Water	0	0.00%
Parcels With No Values	32	0.26%



- Acreage Not Zoned For Agriculture
- Agricultural
- Centrally Assessed
- Industrial
- Institutional
- Mining
- Other
- Public/Semi-Public
- Recreation
- Residential
- Retail/Office
- Row
- Vacant Residential
- Vacant Nonresidential
- Water
- Parcels With No Values

Location Maps



Community Facilities

The community facilities information below is useful in a variety of ways for environmental evaluations. These community resources should be evaluated for potential sociocultural effects, such as accessibility and relocation potential. The facility types may indicate the types of population groups present in the project study area. Facility staff and leaders can be sources of community information such as who uses the facility and how it is used. Additionally, community facilities are potential public meeting venues.

Assisted Housing (Points)

Facility Name	Address	Zip Code
MIDDLEBURG BLUFFS APARTMENTS	2425 IRIS ST.	32068

Community Centers (Points)

Facility Name	Address	Zip Code
VFW POST 8255 - MIDDLEBURG	2269 ASTER AVE	32068
MARINE CORPS LEAGUE DETACHMENT 1047	2269 ASTER AVE	32068
MASONIC LODGE - MIDDLEBURG 107 F & AM	2108 PALMETTO ST	32068
LIONS CLUB - MIDDLEBURG BLACK CREEK	2475 BLANDING BLVD	32068
VVA CHAPTER 1059	2269 ASTER AVE	32068
WEIGEL SENIOR CENTER	3916 SECTION ST	32068

Cultural Centers (Points)

Facility Name	Address	Zip Code
MIDDLEBURG HISTORICAL MUSEUM INC	3912 SECTION ST	32068
MIDDLEBURG CLAY- HILL BRANCH LIBRARY	2245 ASTER ST	32068

Fire Stations (Points)

Facility Name	Address	Zip Code
MIDDLEBURG FIRE DEPARTMENT STATION 14	4003 EVERETTE AVE	32068

Florida Parks and Recreational Facilities (Points)

Facility Name	Address	Zip Code
MASTER SGT JOHN E HAYES MEMORIAL PARK & MAIN STREET BOAT RAMP	3788 MAIN ST	32068
OMEGA PARK	4317 COUNTY ROAD 218	32068
HUNTER-DOUGLAS PARK	4227 LONGMIRE RD	32068

Government Building

Facility Name	Address	Zip Code
U S POST OFFICE - MIDDLEBURG	2073 PALMETTO ST	32068

Healthcare Facilities (Geocoded)

Facility Name	Address	Zip Code
FAMILY PRACTICE ASSOC-MIDDLEBURG	2755 BLANDING BOULEVARD	32068
MIDDLEBURG DIALYSIS CENTER	2070 PALMETTO STREET, SUITE 9	32068
JAYA R SHEKAR MD	2554 BLANDING BOULEVARD	32068

Public and Private Schools (Points)

Facility Name	Address	Zip Code
CINNAMON STREET BAPTIST CHRISTIAN ACADEMY	29 CINNAMON ST	32068
LIGHTHOUSE CHRISTIAN SCHOOL MIDDLEBURG	3925 MAIN ST	32068
MIDDLEBURG ELEMENTARY SCHOOL	3958 MAIN ST	32068

Religious Centers (Points)

Facility Name	Address	Zip Code
JESUS CHURCH OF DELIVERANCE	2782 FORMAN CIR	32068
COMMUNITY HOLINESS CHURCH	2753 FORMAN CIR	32068
ST MARK MISSIONARY BAPTIST CHURCH	2703 FORMAN CIRCLE	32068

Facility Name	Address	Zip Code
CHRISTIAN FAITH CENTER	4021 EVERETT AVENUE	32068
FIRST ASSEMBLY OF GOD	3167 COUNTY ROAD 215	32068
MIDDLEBURG CHURCH OF CHRIST	3155 COUNTY ROAD 215	32068
SOUTH MIDDLEBURG BAPTIST CHURCH	4565 ALLIGATOR BLVD	32068
FIRST BAPTIST CHURCH	2645 BLANDING BLVD	32068
MORNINGSTAR FAMILY CHURCH	3900 MAIN STREET	32068
MIDDLEBURG PRESBYTERIAN CHURCH	4564 ROSEMARY STREET	32068
MIDDLEBURG CHURCH OF GOD	2728 HOWARD ROAD	32068
MIDDLEBURG UNITED METHODIST	3925 MAIN STREET	32068
OAK GROVE BAPTIST CHURCH	COUNTY ROAD 215	32068
CINNAMON STREET BAPTIST CHURCH	20 CINNAMON STREET	32068
CHURCH OF JESUS CHRIST OF LATTER DAY SAINTS	4342 STATE ROAD 218	32068
CHURCH OF JESUS CHRIST OF LATTER DAY SAINTS	4027 EVERETT AVENUE	32068

US Census Places

Facility Name

Middleburg

Veteran Organizations and Facilities (Points)

Facility Name	Address	Zip Code
MARINE CORPS LEAGUE DETACHMENT 1047	2269 ASTER AVENUE	32068
VVA CHAPTER 1059	2269 ASTER AVENUE	32068
VFW POST 8255 - MIDDLEBURG	2269 ASTER AVENUE	32068

Block Groups

The following Census Block Groups were used to calculate demographics for this report.

1990 Census Block Groups

120190312002, 120190301003, 120190311001, 120190301004, 120190301002, 120190302002, 120190302003, 120190312001

2000 Census Block Groups

120190301022, 120190302003, 120190312002, 120190312001, 120190301011, 120190311011, 120190302002, 120190301023, 120190301012

2010 Census Block Groups

120190311011, 120190301024, 120190301022, 120190301032, 120190301041, 120190301023, 120190302012, 120190312004, 120190301031, 120190301033, 120190302021, 120190312002

2017 Census Block Groups

120190301022, 120190301032, 120190302012, 120190301041, 120190311011, 120190302021, 120190312002, 120190301031, 120190312004, 120190301023, 120190301033, 120190301024

Data Sources

Area

The geographic area of the community based on a user-specified community boundary or area of interest (AOI) boundary.

Jurisdiction

Jurisdiction(s) includes local government boundaries that intersect the community or AOI boundary.

Demographic Data

Demographic data reported under the headings General Population Trends, Race and Ethnicity Trends, Age Trends, Income Trends, Educational Attainment Trends, Language Trends, and Housing Trends is from the U.S. Decennial Census (1990, 2000) and the American Community Survey (ACS) 5-year estimates from 2006-2010 and 2013-2017. The data was gathered at the block group level for user-specified community boundaries and AOIs, and at the county level for counties. Depending on the dataset, the data represents 100% counts (Census Summary File 1) or sample-based information (Census Summary File 3 or ACS).

About the Census Data:

User-specified community boundaries and AOIs do not always correspond precisely to block group boundaries. In these instances, adjustment of the geographic area and data for affected block groups is required to estimate the actual population. To improve the accuracy of such estimates in the SDR report, the census block group data was adjusted to exclude all census blocks with a population of two or fewer. These areas were eliminated from the corresponding years' block groups. Next, the portion of the block group that lies outside of the community or AOI boundary was removed. The demographics within each block group were then recalculated, assuming an equal area distribution of the population. Note that there may be areas where there is no population.

Use caution when comparing the 100% count data (Decennial Census) to the sample-based data (ACS). In any given year, about one in 40 or 2.5% of U.S. households will receive the ACS questionnaire. Over any five-year period, about

one in eight households will receive the questionnaire, as compared to about one in six that received the long form questionnaire for the Decennial Census 2000. (Source: <http://mcdc.missouri.edu/pub/data/acs/Readme.shtml>) The U.S. Census Bureau provides help with this process:

<https://www.census.gov/programs-surveys/acs/guidance/comparing-acs-data/2017.html>

Use caution when interpreting changes in Race and Ethnicity over time. Starting with the 2000 Decennial Census, respondents were given a new option of selecting one or more race categories. Also in 2000, the placement of the question about Hispanic origin changed, helping to increase responsiveness to the Hispanic-origin question. Because of these and other changes, the 1990 data on race and ethnicity are not directly comparable with data from later censuses. (Source: <http://www.census.gov/prod/2001pubs/c2kbr01-1.pdf>; <http://www.census.gov/pred/www/rpts/Race%20and%20Ethnicity%20FINAL%20report.pdf>)

The "Minority" calculations are derived from Census and ACS data using both the race and ethnicity responses. On this report, "Minority" refers to individuals who list a race other than White and/or list their ethnicity as Hispanic/Latino. In other words, people who are multi-racial, any single race other than White, or Hispanic/Latino of any race are considered minorities.

Disability data is not included in the 2010 Decennial Census, or the 2006-2010 ACS. This data is available in the 2013-2017 ACS.

Because of changes made to the Census and ACS questions between 1990 and 2017, disability variables should not be compared from year to year. For example: 1) With the 1990 data the disabilities are listed as a "work disability" while this distinction is not made with 2000 or 2017 ACS data; 2) The 2017 ACS data includes the institutionalized population (e.g. persons in prisons and group homes), while this population is not included in 1990 or 2000; 3) the age groupings changed over the years.

Please take the following two concerns into account when viewing this data: 1) With the 1990 data the disabilities are listed as a "work disability" while this distinction is not made with 2000 or 2017 ACS data; 2) The 2017 ACS data includes the institutionalized population (e.g. persons in prisons and group homes), while this population is not included in 1990 or 2000.

The category Bachelor's Degree or Higher under the heading Educational Attainment Trends is a subset of the category High School Graduate or Higher.

Income of households. This includes the income of the householder and all other individuals 15 years old and over in the household, whether they are related to the householder or not. Because many households consist of only one person, average household income is usually less than average family income.

Income of families. In compiling statistics on family income, the incomes of all members 15 years old and over related to the householder are summed and treated as a single amount.

Age Trends median age for 1990 is not available.

Land Use Data

The Land Use information Indicates acreages and percentages for the generalized land use types used to group parcel-specific, existing land use assigned by the county property appraiser office according to the Florida Department of Revenue land use codes.

Community Facilities Data

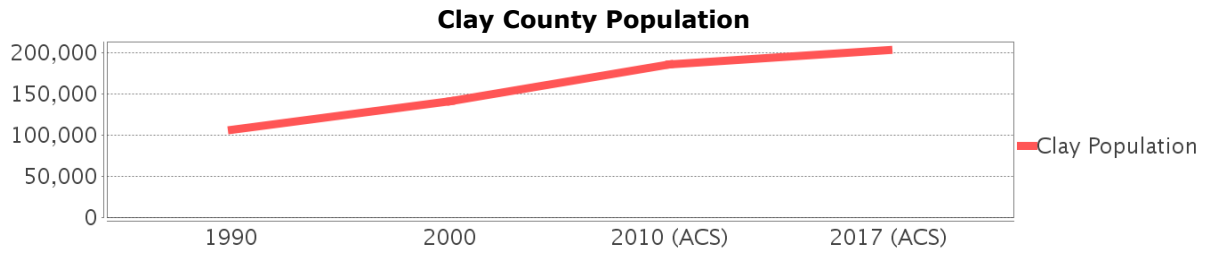
- Assisted Rental Housing Units - Identifies multifamily rental developments that receive funding assistance under federal, state, and local government programs to offer affordable housing as reported by the Shimberg Center for Housing Studies, University of Florida.

- Mobile Home Parks - Identifies approved or acknowledged mobile home parks reported by the Florida Department of Business and Professional Regulation and Florida Department of Health.
- Migrant Camps - Identifies migrant labor camp facilities inspected by the Florida Department of Health.
- Group Care Facilities - Identifies group care facilities inspected by the Florida Department of Health.
- Community Center and Fraternal Association Facilities - Identifies facilities reported by multiple sources.
- Law Enforcement Correctional Facilities - Identifies facilities reported by multiple sources.
- Cultural Centers - Identifies cultural centers including organizations, buildings, or complexes that promote culture and arts (e.g., aquariums and zoological facilities; arboreta and botanical gardens; dinner theaters; drive-ins; historical places and services; libraries; motion picture theaters; museums and art galleries; performing arts centers; performing arts theaters; planetariums; studios and art galleries; and theater producers stage facilities) reported by multiple sources.
- Fire Department and Rescue Station Facilities - Identifies facilities reported by multiple sources.
- Government Buildings - Identifies local, state, and federal government buildings reported by multiple sources.
- Health Care Facilities - Identifies health care facilities including abortion clinics, dialysis clinics, medical doctors, nursing homes, osteopaths, state laboratories/clinics, and surgicenters/walk-in clinics reported by the Florida Department of Health.
- Hospital Facilities - Identifies hospital facilities reported by multiple sources.
- Law Enforcement Facilities - Identifies law enforcement facilities reported by multiple sources.
- Parks and Recreational Facilities - Identifies parks and recreational facilities reported by multiple sources.
- Religious Center Facilities - Identifies religious centers including churches, temples, synagogues, mosques, chapels, centers, and other types of religious facilities reported by multiple sources.
- Private and Public Schools - Identifies private and public schools reported by multiple sources.
- Social Service Centers - Identifies social service centers reported by multiple sources.
- Veteran Organizations and Facilities

Clay County Demographic Profile

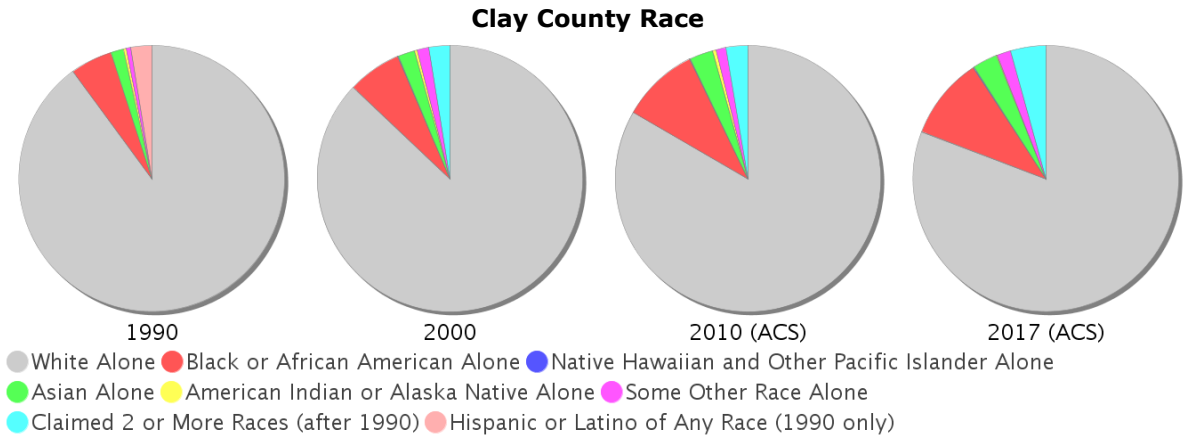
General Population Trends - Clay

Description	1990	2000	2010 (ACS)	2017 (ACS)
Total Population	105,986	140,814	186,076	203,291
Total Households	36,663	50,243	67,493	71,939
Average Persons per Acre	0.257	0.342	0.452	0.494
Average Persons per Household	2.891	2.764	3.00	2.81
Average Persons per Family	3.233	3.168	3.183	3.293
Males	52,272	69,134	91,200	100,119
Females	53,714	71,680	94,876	103,172



Race and Ethnicity Trends - Clay

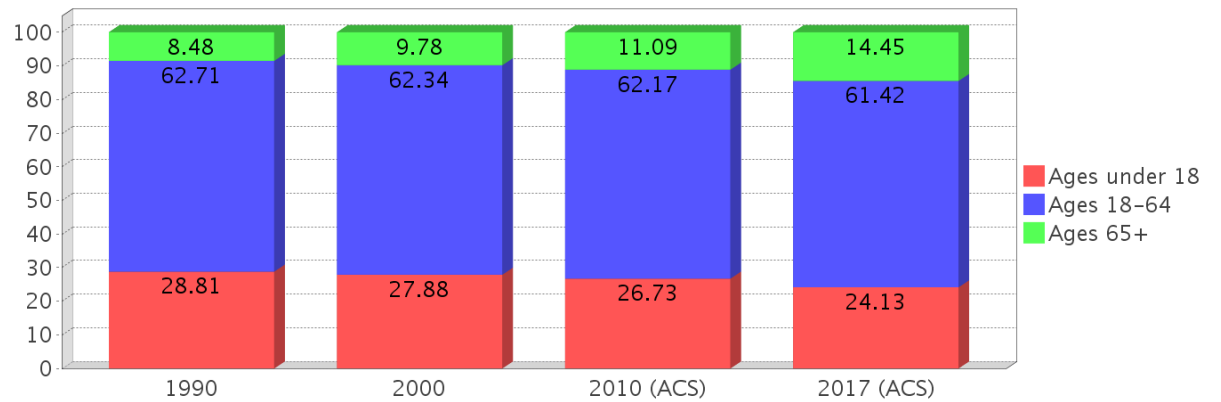
Description	1990	2000	2010 (ACS)	2017 (ACS)
White Alone	97,691 (92.17%)	122,583 (87.05%)	155,042 (83.32%)	164,223 (80.78%)
Black or African American Alone	5,513 (5.20%)	9,165 (6.51%)	17,586 (9.45%)	20,298 (9.98%)
Native Hawaiian and Other Pacific Islander Alone	(NA)	89 (0.06%)	119 (0.06%)	172 (0.08%)
Asian Alone	1,702 (1.61%)	2,901 (2.06%)	5,348 (2.87%)	6,145 (3.02%)
American Indian or Alaska Native Alone	367 (0.35%)	470 (0.33%)	749 (0.40%)	260 (0.13%)
Some Other Race Alone	635 (0.60%)	2,028 (1.44%)	2,230 (1.20%)	3,406 (1.68%)
Claimed 2 or More Races	(NA)	3,578 (2.54%)	5,002 (2.69%)	8,787 (4.32%)
Hispanic or Latino of Any Race	2,764 (2.61%)	6,181 (4.39%)	13,395 (7.20%)	18,890 (9.29%)
Not Hispanic or Latino	103,222 (97.39%)	134,633 (95.61%)	172,681 (92.80%)	184,401 (90.71%)
Minority	43,608 (41.15%)	21,518 (15.28%)	43,608 (23.44%)	52,527 (25.84%)



Age Trends - Clay

Description	1990	2000	2010 (ACS)	2017 (ACS)
Under Age 5	7.57%	6.46%	6.32%	5.60%
Ages 5-17	21.24%	21.42%	20.41%	18.52%
Ages 18-21	5.60%	4.81%	5.01%	5.27%
Ages 22-29	12.16%	8.89%	9.02%	9.26%
Ages 30-39	17.37%	15.80%	13.42%	11.96%
Ages 40-49	15.17%	16.54%	15.90%	14.21%
Ages 50-64	12.42%	16.29%	18.82%	20.72%
Age 65 and Over	8.48%	9.78%	11.09%	14.45%
-Ages 65-74	5.19%	5.58%	6.62%	9.16%
-Ages 75-84	2.47%	3.33%	3.44%	4.05%
-Age 85 and Over	0.82%	0.87%	1.03%	1.24%
Median Age	NA	36	38	39

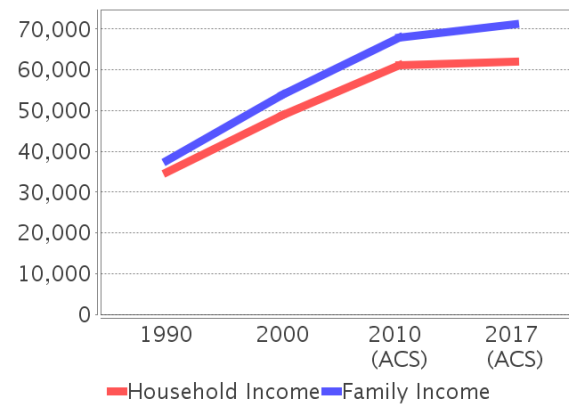
Percentage Population by Age Group - Clay



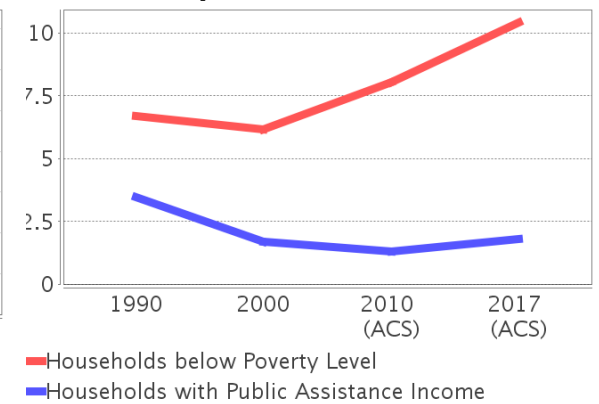
Income Trends - Clay

Description	1990	2000	2010 (ACS)	2017 (ACS)
Median Household Income	\$34,860	\$48,854	\$61,185	\$61,971
Median Family Income	\$37,779	\$53,814	\$67,922	\$71,173
Population below Poverty Level	7.09%	6.78%	8.55%	10.42%
Households below Poverty Level	6.68%	6.16%	8.05%	10.41%
Households with Public Assistance Income	3.48%	1.69%	1.31%	1.79%

Income Trends



Poverty and Public Assistance



Disability Trends - Clay

See the Data Sources section below for an explanation about the differences in disability data among the various years.

Description	1990	2000	2010 (ACS)	2017 (ACS)
Population 16 To 64 Years with a disability	5,492 (7.47%)	16,630 (12.97%)	NA (NA)	NA (NA)
Population 20 To 64 Years with a disability	NA (NA)	NA (NA)	NA (NA)	13,335 (11.18%)

Educational Attainment Trends - Clay

Age 25 and Over

Description	1990	2000	2010 (ACS)	2017 (ACS)
Less than 9th Grade	3,812 (5.83%)	2,900 (3.21%)	2,962 (2.46%)	3,552 (2.59%)
9th to 12th Grade, No Diploma	8,514 (13.02%)	9,397 (10.40%)	8,695 (7.22%)	8,627 (6.28%)
High School Graduate or Higher	53,064 (81.15%)	78,085 (86.39%)	108,834 (90.33%)	125,175 (91.13%)
Bachelor's Degree or Higher	11,716 (17.92%)	18,159 (20.09%)	28,701 (23.82%)	32,556 (23.70%)

Language Trends - Clay

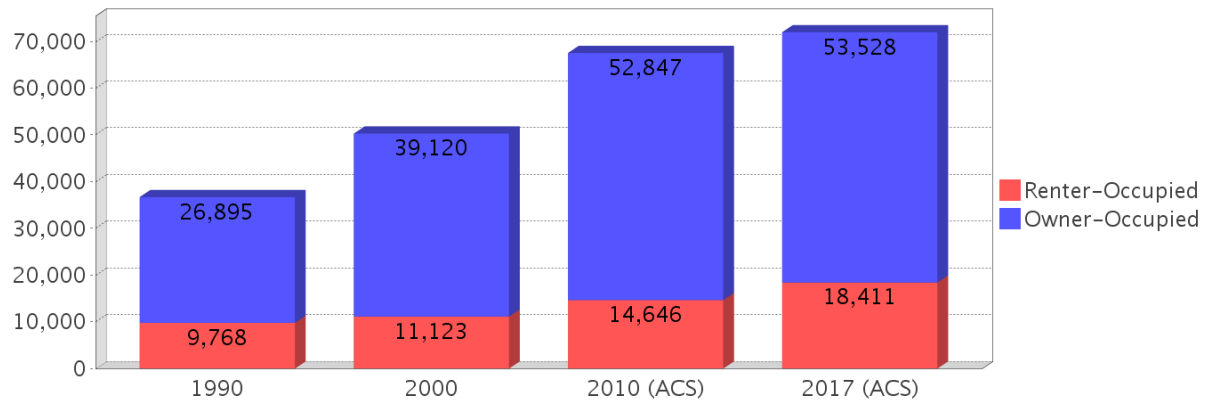
Age 5 and Over

Description	1990	2000	2010 (ACS)	2017 (ACS)
Speaks English Well	1,025 (1.04%)	1,777 (1.35%)	2,993 (1.72%)	2,956 (1.54%)
Speaks English Not Well	NA (NA)	829 (0.63%)	1,827 (1.05%)	2,331 (1.21%)
Speaks English Not at All	NA (NA)	128 (0.10%)	421 (0.24%)	949 (0.49%)
Speaks English Not Well or Not at All	534 (0.54%)	957 (0.73%)	2,248 (1.29%)	3,280 (1.71%)

Housing Trends - Clay

Description	1990	2000	2010 (ACS)	2017 (ACS)
Total	40,249	53,748	73,799	78,815
Units per Acre	0.098	0.13	0.179	0.191
Single-Family Units	24,747	37,998	56,086	59,407
Multi-Family Units	5,264	6,394	7,837	9,224
Mobile Home Units	6,502	9,231	9,832	10,168
Owner-Occupied Units	26,895	39,120	52,847	53,528
Renter-Occupied Units	9,768	11,123	14,646	18,411
Vacant Units	3,586	3,505	6,306	6,876
Median Housing Value	\$82,200	\$97,400	\$189,700	\$165,300
Occupied Housing Units w/No Vehicle	1,369 (3.73%)	1,661 (3.31%)	2,073 (3.07%)	2,039 (2.83%)

Housing Tenure - Clay



County Data Sources

Demographic data reported is from the U.S. Decennial Census (1990, 2000) and the American Community Survey (ACS) 5-year estimates from 2006-2010 and 2013-2017. The data was gathered at the county level. Depending on the dataset, the data represents 100% counts (Census Summary File 1) or sample-based information (Census Summary File 3 or ACS).

About the Census Data:

Use caution when comparing the 100% count data (Decennial Census) to the sample-based data (ACS). In any given year, about one in 40 or 2.5% of U.S. households will receive the ACS questionnaire. Over any five-year period, about one in eight households will receive the questionnaire, as compared to about one in six that received the long form questionnaire for the Decennial Census 2000. (Source: <http://mcdc.missouri.edu/pub/data/acs/Readme.shtml>) The U.S. Census Bureau provides help with this process:

<https://www.census.gov/programs-surveys/acs/guidance/comparing-acs-data/2017.html>

Use caution when interpreting changes in Race and Ethnicity over time. Starting with the 2000 Decennial Census, respondents were given a new option of selecting one or more race categories. Also in 2000, the placement of the question about Hispanic origin changed, helping to increase responsiveness to the Hispanic-origin question. Because of these and other changes, the 1990 data on race and ethnicity are not directly comparable with data from later censuses. (Source: <http://www.census.gov/prod/2001pubs/c2kbr01-1.pdf>; <http://www.census.gov/pred/www/rpts/Race%20and%20Ethnicity%20FINAL%20report.pdf>)

The "Minority" calculations are derived from Census and ACS data using both the race and ethnicity responses. On this report, "Minority" refers to individuals who list a race other than White and/or list their ethnicity as Hispanic/Latino. In other words, people who are multi-racial, any single race other than White, or Hispanic/Latino of any race are considered minorities.

Disability data is not included in the 2010 Decennial Census, or the 2006-2010 ACS. This data is available in the 2013-2017 ACS.

Because of changes made to the Census and ACS questions between 1990 and 2017, disability variables should not be compared from year to year. For example: 1) With the 1990 data the disabilities are listed as a "work disability" while this distinction is not made with 2000 or 2017 ACS data; 2) The 2017 ACS data includes the institutionalized population (e.g. persons in prisons and group homes), while this population is not included in 1990 or 2000; 3) the age groupings changed over the years.

Please take the following two concerns into account when viewing this data: 1) With the 1990 data the disabilities are listed as a "work disability" while this distinction is not made with 2000 or 2017 ACS data; 2) The 2017 ACS data includes the institutionalized population (e.g. persons in prisons and group homes), while this population is not included in 1990 or 2000.

source:

<https://www.census.gov/people/disability/methodology/acs.html>

<https://www.census.gov/population/www/cen2000/90vs00/index.html>

The category Bachelor's Degree or Higher under the heading Educational Attainment Trends is a subset of the category High School Graduate or Higher.

Metadata

- Community and Fraternal Centers https://etdmpub.florida-estat.org/metadata/gc_communitycenter.htm
- Correctional Facilities in Florida https://etdmpub.florida-estat.org/metadata/gc_correctional.htm
- Cultural Centers in Florida https://etdmpub.florida-estat.org/metadata/gc_culturecenter.htm
- Fire Department and Rescue Station Facilities in Florida https://etdmpub.florida-estat.org/metadata/gc_firestat.htm
- Local, State, and Federal Government Buildings in Florida https://etdmpub.florida-estat.org/metadata/gc_govbuild.htm
- Florida Health Care Facilities https://etdmpub.florida-estat.org/metadata/gc_health.htm
- Hospital Facilities in Florida https://etdmpub.florida-estat.org/metadata/gc_hospitals.htm
- Law Enforcement Facilities in Florida https://etdmpub.florida-estat.org/metadata/gc_lawenforce.htm
- Florida Parks and Recreational Facilities https://etdmpub.florida-estat.org/metadata/gc_parks.htm
- Religious Centers https://etdmpub.florida-estat.org/metadata/gc_religion.htm
- Florida Public and Private Schools https://etdmpub.florida-estat.org/metadata/gc_schools.htm
- Social Service Centers https://etdmpub.florida-estat.org/metadata/gc_socialservice.htm
- Assisted Rental Housing Units in Florida https://etdmpub.florida-estat.org/metadata/gc_assisted_housing.htm
- Group Care Facilities <https://etdmpub.florida-estat.org/metadata/groupcare.htm>
- Mobile Home Parks in Florida https://etdmpub.florida-estat.org/metadata/gc_mobilehomes.htm
- Migrant Camps in Florida <https://etdmpub.florida-estat.org/metadata/migrant.htm>
- Veteran Organizations and Facilities https://etdmpub.florida-estat.org/metadata/gc_veterans.htm
- Generalized Land Use - Florida DOT District 2 https://etdmpub.florida-estat.org/metadata/d2_lu_gen.htm
- Census Block Groups in Florida https://etdmpub.florida-estat.org/metadata/e2_cenacs_cci.htm
- 1990 Census Block Groups in Florida https://etdmpub.florida-estat.org/metadata/e2_cenblkgrp_1990_cci.htm
- 2000 Census Block Groups in Florida https://etdmpub.florida-estat.org/metadata/e2_cenblkgrp_2000_cci.htm
- 2010 Census Block Groups in Florida https://etdmpub.florida-estat.org/metadata/e2_cenblkgrp_2010_cci.htm