

# Sociocultural Data Report

## Mims

**Area:** 22.341 square miles  
**Jurisdiction(s):** **Cities:** Titusville  
**Counties:** Brevard

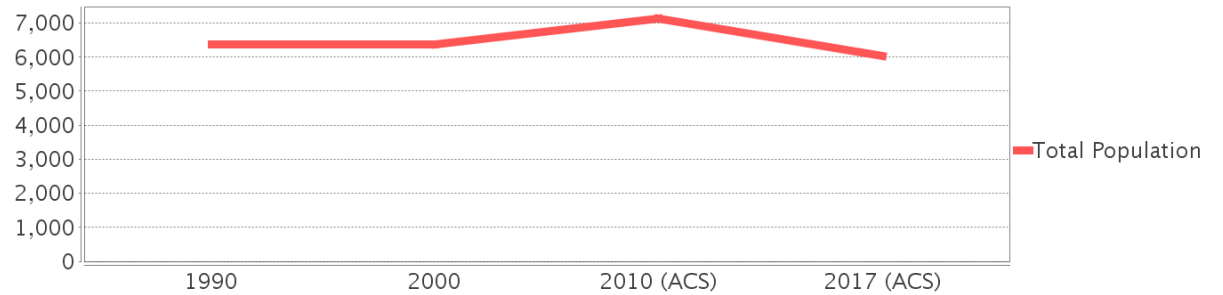
## General Population Trends

Description	1990	2000	2010 (ACS)	2017 (ACS)
Total Population	6,383	6,378	7,127	6,029
Total Households	2,331	2,570	2,915	2,463
Average Persons per Acre	1.09	1.08	1.13	1.17
Average Persons per Household	2.93	2.53	2.50	2.49
Average Persons per Family	3.13	2.98	3.00	3.36
Males	3,133	3,134	3,551	3,100
Females	3,250	3,244	3,577	2,928

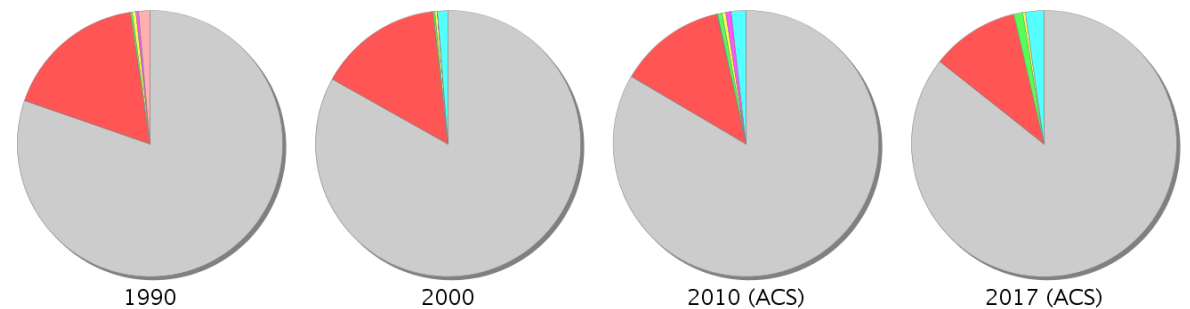
## Race and Ethnicity Trends

Description	1990	2000	2010 (ACS)	2017 (ACS)
White Alone	5,192 (81.34%)	5,299 (83.08%)	5,948 (83.46%)	5,161 (85.60%)
Black or African American Alone	1,125 (17.62%)	965 (15.13%)	929 (13.03%)	646 (10.71%)
Native Hawaiian and Other Pacific Islander Alone	0 (0.00%)	0 (0.00%)	3 (0.04%)	0 (0.00%)
Asian Alone	16 (0.25%)	14 (0.22%)	42 (0.59%)	67 (1.11%)
American Indian or Alaska Native Alone	30 (0.47%)	16 (0.25%)	31 (0.43%)	19 (0.32%)
Some Other Race Alone	20 (0.31%)	5 (0.08%)	48 (0.67%)	0 (0.00%)
Claimed 2 or More Races	NA (NA)	79 (1.24%)	126 (1.77%)	136 (2.26%)
Hispanic or Latino of Any Race	87 (1.36%)	100 (1.57%)	216 (3.03%)	81 (1.34%)
Not Hispanic or Latino	6,296 (98.64%)	6,278 (98.43%)	6,911 (96.97%)	5,948 (98.66%)
Minority	1,251 (19.60%)	1,167 (18.30%)	1,322 (18.55%)	931 (15.44%)

## Population

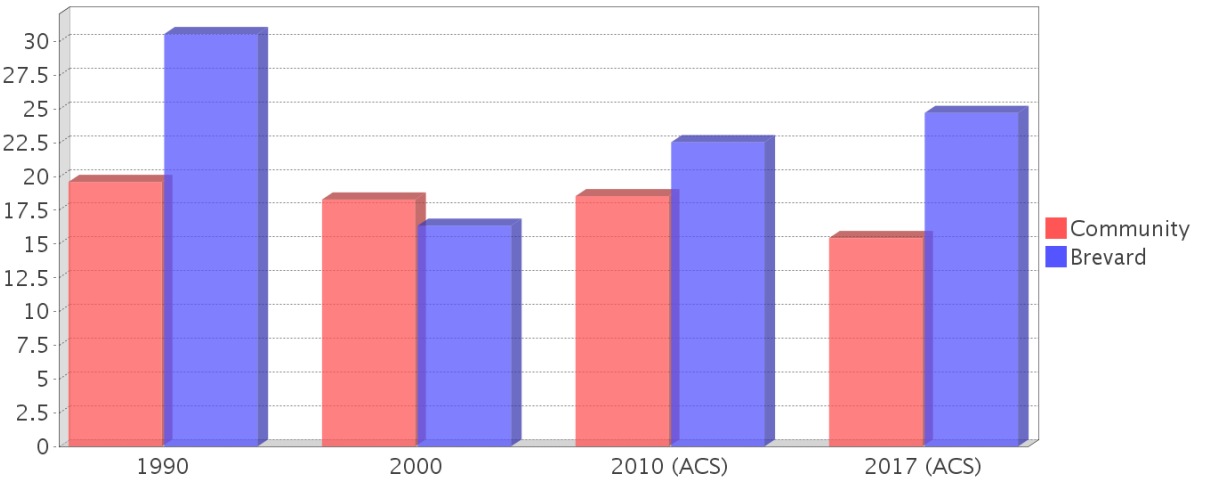


## Race



● White Alone 
 ● Black or African American Alone 
 ● Native Hawaiian and Other Pacific Islander Alone 
 ● Asian Alone 
 ● American Indian or Alaska Native Alone 
 ● Some Other Race Alone 
 ● Claimed 2 or More Races (after 1990) 
 ● Hispanic or Latino of Any Race (1990 only)

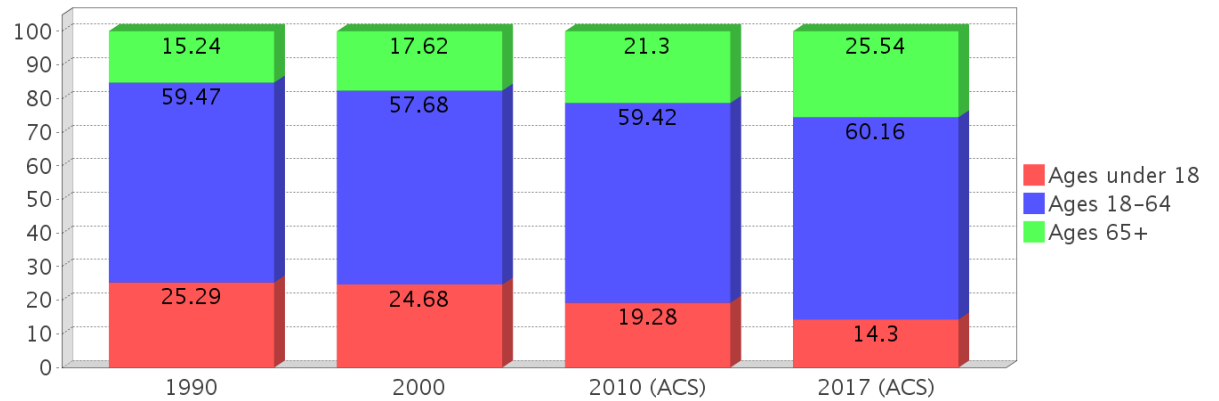
## Minority Percentage Population



### Age Trends

Description	1990	2000	2010 (ACS)	2017 (ACS)
Under Age 5	7.36%	4.69%	4.29%	1.89%
Ages 5-17	17.92%	19.99%	14.99%	12.41%
Ages 18-21	4.87%	3.20%	4.80%	6.34%
Ages 22-29	11.51%	6.87%	7.06%	6.02%
Ages 30-39	13.69%	12.89%	9.19%	9.26%
Ages 40-49	12.38%	16.76%	14.76%	11.84%
Ages 50-64	17.01%	17.97%	23.61%	26.70%
Age 65 and Over	15.24%	17.62%	21.30%	25.54%
-Ages 65-74	9.68%	10.16%	12.81%	14.07%
-Ages 75-84	5.00%	5.19%	6.52%	8.48%
-Age 85 and Over	0.56%	2.27%	1.96%	3.02%
Median Age	NA	40	46	51

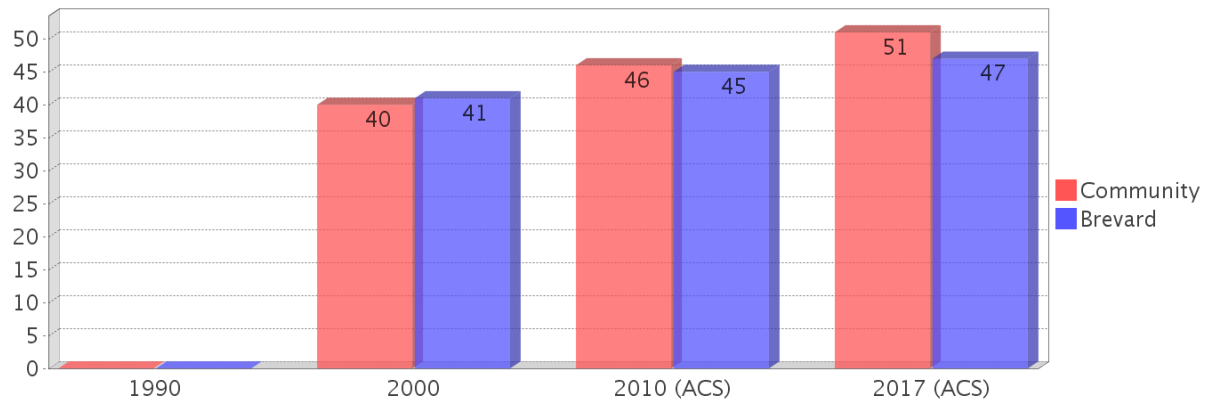
### Percentage Population by Age Group



### Income Trends

Description	1990	2000	2010 (ACS)	2017 (ACS)
Median Household Income	\$28,843	\$37,390	\$43,929	\$50,134
Median Family Income	\$30,833	\$41,809	\$51,771	\$54,136
Population below Poverty Level	14.65%	15.48%	15.46%	13.48%
Households below Poverty Level	13.00%	16.11%	13.45%	12.46%
Households with Public Assistance Income	7.64%	2.80%	1.51%	2.84%

### Median Age Comparison

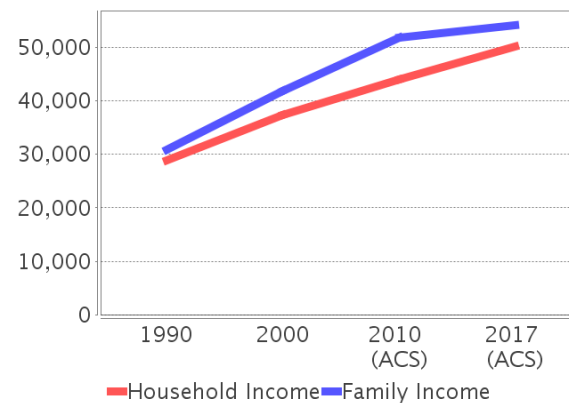


### Disability Trends

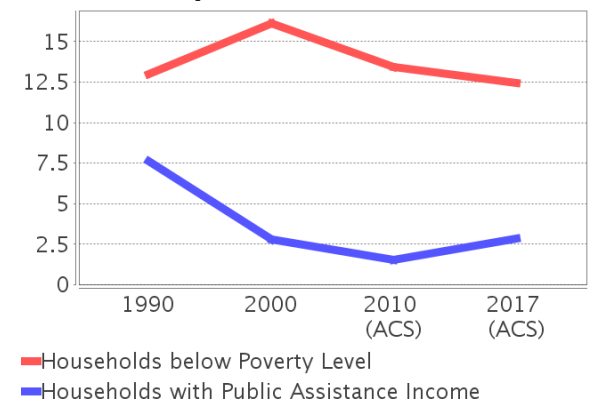
See the Data Sources section below for an explanation about the differences in disability data among the various years.

Description	1990	2000	2010 (ACS)	2017 (ACS)
Population 16 To 64 Years with a disability	385 (7.79%)	955 (15.73%)	(NA)	(NA)
Population 20 To 64 Years with a disability	(NA)	(NA)	(NA)	534 (15.28%)

### Income Trends



### Poverty and Public Assistance



## Educational Attainment Trends

Age 25 and Over

Description	1990	2000	2010 (ACS)	2017 (ACS)
Less than 9th Grade	455 (10.62%)	405 (9.09%)	232 (4.31%)	148 (3.20%)
9th to 12th Grade, No Diploma	763 (17.81%)	809 (18.16%)	625 (11.61%)	462 (10.00%)
High School Graduate or Higher	3,066 (71.57%)	3,242 (72.76%)	4,524 (84.07%)	4,010 (86.82%)
Bachelor's Degree or Higher	499 (11.65%)	386 (8.66%)	764 (14.20%)	684 (14.81%)

## Language Trends

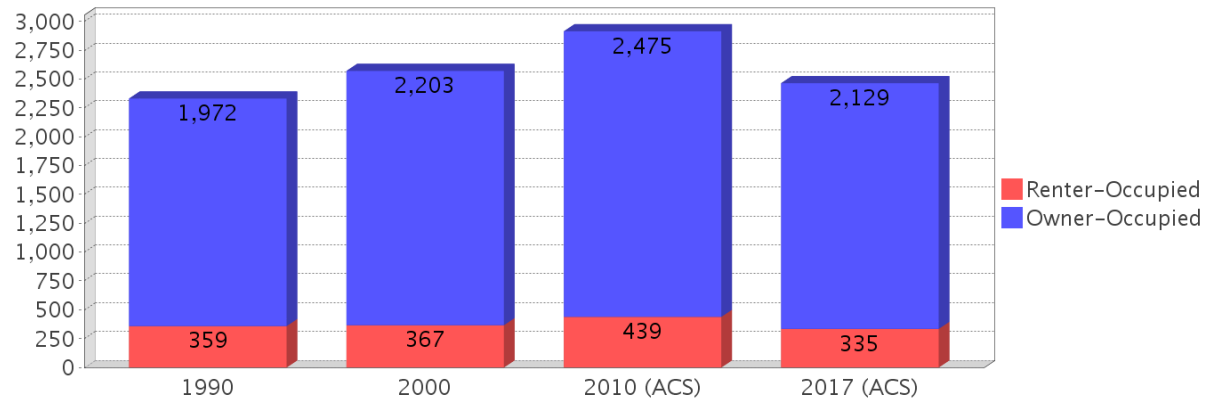
Age 5 and Over

Description	1990	2000	2010 (ACS)	2017 (ACS)
Speaks English Well	44 (0.73%)	44 (0.72%)	66 (0.93%)	29 (0.49%)
Speaks English Not Well	NA (NA)	11 (0.18%)	14 (0.20%)	18 (0.30%)
Speaks English Not at All	NA (NA)	0 (0.00%)	0 (0.00%)	0 (0.00%)
Speaks English Not Well or Not at All	9 (0.15%)	11 (0.18%)	14 (0.20%)	18 (0.30%)

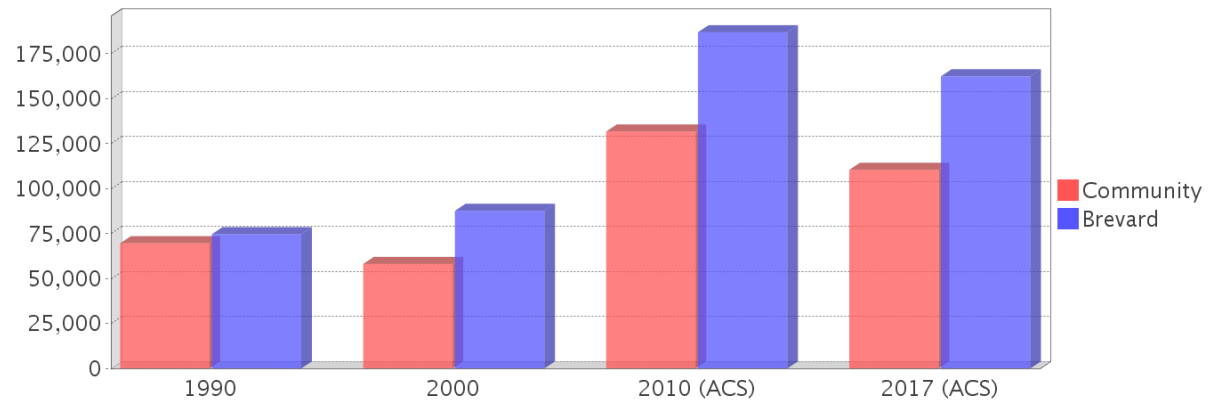
## Housing Trends

Description	1990	2000	2010 (ACS)	2017 (ACS)
Total	2,663	3,000	3,485	3,481
Units per Acre	0.26	0.29	0.33	0.33
Single-Family Units	1,513	1,745	2,062	2,203
Multi-Family Units	42	75	77	53
Mobile Home Units	758	1,049	1,164	1,196
Owner-Occupied Units	1,972	2,203	2,475	2,129
Renter-Occupied Units	359	367	439	335
Vacant Units	332	430	570	1,018
Median Housing Value	\$69,600	\$58,100	\$131,700	\$110,400
Occupied Housing Units w/No Vehicle	115 (4.93%)	179 (6.96%)	108 (3.70%)	134 (5.44%)

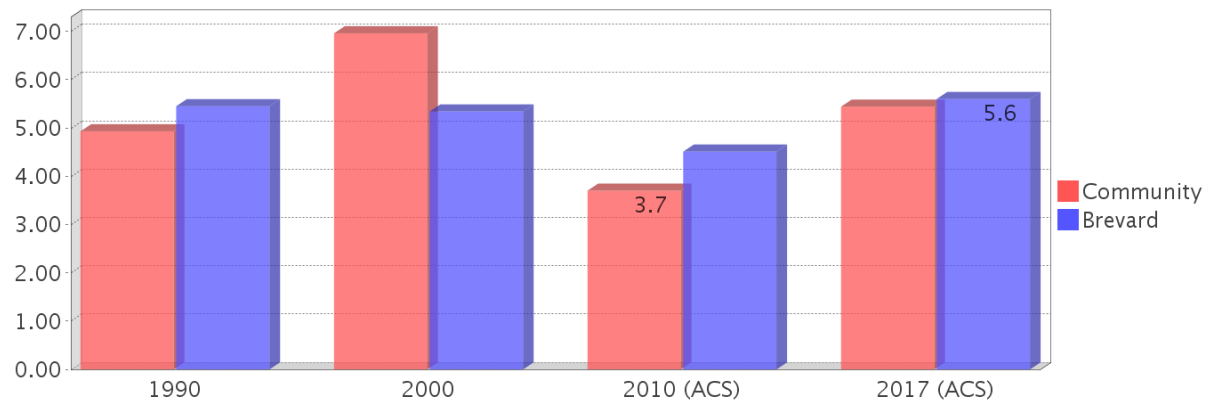
## Housing Tenure



## Median Housing Value Comparison

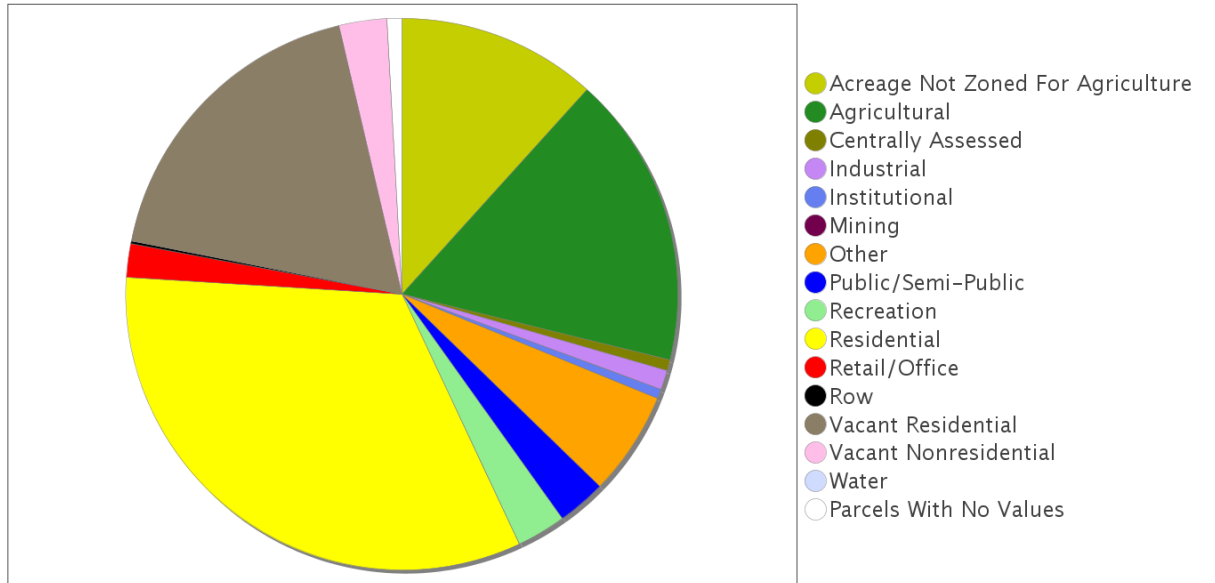


## Occupied Units With No Vehicles Available

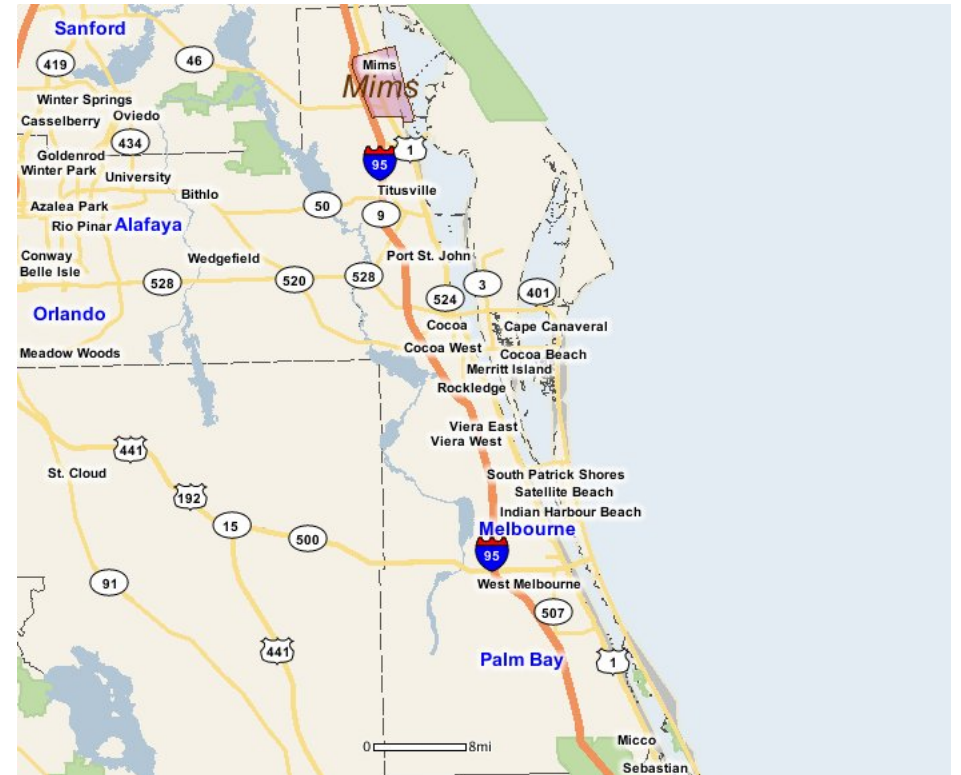
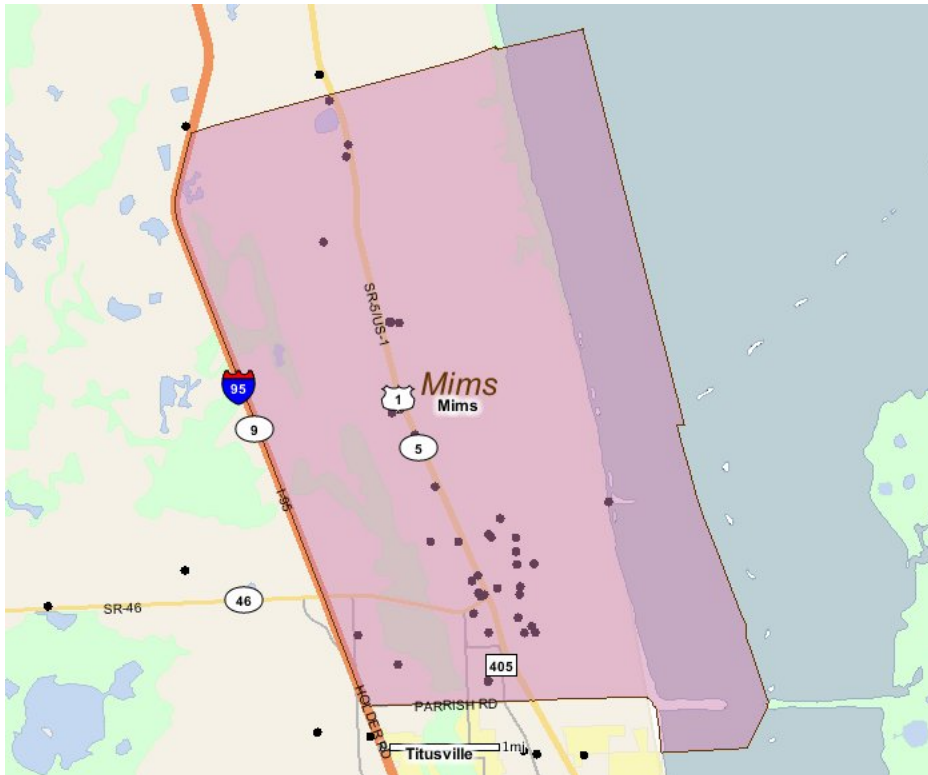


## Existing Land Use

Land Use Type	Acres	Percentage
Acreage Not Zoned For Agriculture	1,191	8.33%
Agricultural	1,743	12.19%
Centrally Assessed	65	0.45%
Industrial	118	0.83%
Institutional	56	0.39%
Mining	0	0.00%
Other	620	4.34%
Public/Semi-Public	291	2.04%
Recreation	295	2.06%
Residential	3,354	23.46%
Retail/Office	198	1.38%
Row	15	0.10%
Vacant Residential	1,858	12.99%
Vacant Nonresidential	285	1.99%
Water	0	0.00%
Parcels With No Values	88	0.62%



## Location Maps



---

## Community Facilities

The community facilities information below is useful in a variety of ways for environmental evaluations. These community resources should be evaluated for potential sociocultural effects, such as accessibility and relocation potential. The facility types may indicate the types of population groups present in the project study area. Facility staff and leaders can be sources of community information such as who uses the facility and how it is used. Additionally, community facilities are potential public meeting venues.

### Community Centers (Points)

Facility Name	Address	Zip Code
MOOSE LODGE 1962 - TITUSVILLE	3264 US HWY 1	32754
MASONIC LODGE - GATEWAY 384 F & AM	2995 TEMPLE LN	32754
WOMEN OF THE MOOSE CHAPTER 1485 - TITUSVILLE	3264 N US HWY 1	32754
CUYLER PARK COMMUNITY CENTER	2329 HARRY T MOORE AVE	32754
BOYS & GIRLS CLUB - CENTRAL FLA MIMS	2477 HARRY T MOORE AVE	32754

### Cultural Centers (Points)

Facility Name	Address	Zip Code
MIMS/SCOTTSMOOR PUBLIC LIBRARY	3615 LIONEL RD	32754
HARRY T & HARRIETTE V MOORE CULTURAL CENTER	2180 FREEDOM AVE	32754

### Fire Stations (Points)

Facility Name	Address	Zip Code
BREVARD COUNTY FIRE DEPARTMENT STATION 28 (CLOSED)	4780 N US HWY 1	32754
BREVARD COUNTY FIRE DEPARTMENT AND RESCUE STATION 22	2475 TAYLOR ST	32754
MIMS VOLUNTEER FIRE DEPARTMENT STATION	2476 TAYLOR ST	32754

### Florida Parks and Recreational Facilities (Points)

Facility Name	Address	Zip Code
CUYLER PARK	2329 HARRY T MOORE AVE	32754
MIMS LAUNCH RAMP	2010 JONES AVE	32754
HOLDER PARK	2650 GLENDALE BLVD	32754
HARRY AND HARRIET MOORE MEMORIAL PARK	2180 FREEDOM AVE	32754

### Government Building

Facility Name	Address	Zip Code
U S POST OFFICE - MIMS	3405 KELLY RD	32754

### Mobile Home Parks in Florida

Facility Name	Address	Zip Code
NORTHGATE MHP	3277 1ST AVE	32754
MIMS TRAILER PARK	2291 N US HWY 1	32754
WESTWOOD MOBILE PARK	3210 US HWY 1	32754

### Public and Private Schools (Points)

Facility Name	Address	Zip Code
PINEWOOD ELEMENTARY SCHOOL	3757 OLD DIXIE HIGHWAY	32754
MIMS ELEMENTARY SCHOOL	2582 N US HIGHWAY 1	32754
NORTH AREA ALTERNATIVE LEARNING CENTER	2327 HARRY T MOORE AVE	32754

### Religious Centers (Points)

Facility Name	Address	Zip Code
TABERNACLE BAPTIST CHURCH	3575 KELLY ROAD	32754
MIMS UNITED METHODIST CHURCH	3302 GREEN STREET	32754
FAITH, HOPE, & CHARITY OUTREACH MINISTRY	2518 MITCHELL AVE	32754

Facility Name	Address	Zip Code
SHILOH	2519 HARRY T MOORE AVENUE	32754
FIRST BAPTIST CHURCH OF AURANTIA	3953 FAIRFAX DRIVE	32754
CHURCH OF GOD	2748 HARRY T MOORE AVE	32754
ST JOHN PRIMITIVE BAPTIST CHURCH	2684 HARRY T MOORE AVENUE	32754
MIMS CHURCH OF GOD IN CHRIST	2620 HARRY T MOORE AVE	32754
MOUNT CALVARY CHURCH OF GOD IN CHRIST	2813 ASH TERRACE	32754
ST MARY BAPTIST CHURCH	3102 WILEY AVENUE	32754
HOUSE OF PRAYER	4510 US HIGHWAY 1	32754
GREATER WORKS CHRISTIAN CENTER	2617 BETHUNE AVENUE	32754
HOLY SPIRIT CATHOLIC CHURCH	2309 HOLDER ROAD	32754
FIRST BAPTIST MIMS	2395 KENTUCKY AVENUE	32754
HOSANNA MIMS CHURCH OF GOD	2320 RAILROAD AVENUE	32754
GREATER ST JAMES BAPTIST CHURCH	2396 HARRY T MOORE AVENUE	32754

## US Census Places

### Facility Name

Titusville

Mims

---

## Block Groups

The following Census Block Groups were used to calculate demographics for this report.

### 1990 Census Block Groups

120090601005, 120090601006, 120090603005, 120090603003, 120090601004, 120090601001, 120090601003, 120090601007, 120090603002, 120090604001, 120090601002, 120090603001, 120090602002, 120090601008, 120090711001, 120090711002

### 2000 Census Block Groups

120090601001, 120090711001, 120090601004, 120090601002, 120090601005, 120090603002, 120090601003, 120090602001, 120090603001, 120090603004

### 2010 Census Block Groups

120090603001, 120090601022, 120090601021, 120090601011, 120090601012, 120090603003, 120090601013, 120090711001, 120090602003, 120090603002

### 2017 Census Block Groups

120090601021, 120090601013, 120090603002, 120090601022, 120090601011, 120090603001, 120090601012, 120090603003

---

## Data Sources

### Area

The geographic area of the community based on a user-specified community boundary or area of interest (AOI) boundary.

### Jurisdiction

Jurisdiction(s) includes local government boundaries that intersect the community or AOI boundary.

### Demographic Data

Demographic data reported under the headings General Population Trends, Race and Ethnicity Trends, Age Trends, Income Trends, Educational Attainment Trends, Language Trends, and Housing Trends is from the U.S. Decennial Census (1990, 2000) and the American Community Survey (ACS) 5-year estimates from 2006-2010 and 2013-2017. The data was gathered at the block group level for user-specified community boundaries and AOIs, and at the county level for counties. Depending on the dataset, the data represents 100% counts (Census Summary File 1) or sample-based information (Census Summary File 3 or ACS).

### About the Census Data:

User-specified community boundaries and AOIs do not always correspond precisely to block group boundaries. In these instances, adjustment of the geographic area and data for affected block groups is required to estimate the actual population. To improve the accuracy of such estimates in the SDR report, the census block group data was adjusted to exclude all census blocks with a population of two or fewer. These areas were eliminated from the corresponding years' block groups. Next, the portion of the block group that lies outside of the community or AOI boundary was removed. The demographics within each block group were then recalculated, assuming an equal area distribution of the population. Note that there may be areas where there is no population.

Use caution when comparing the 100% count data (Decennial Census) to the sample-based data (ACS). In any given year, about one in 40 or 2.5% of U.S. households will receive the ACS questionnaire. Over any five-year period, about one in eight households will receive the questionnaire, as compared to about one in six that received the long form questionnaire for the Decennial Census 2000. (Source: <http://mcdc.missouri.edu/pub/data/acs/Readme.shtml>) The U.S. Census Bureau provides help with this process:

<https://www.census.gov/programs-surveys/acs/guidance/comparing-acs-data/2017.html>

Use caution when interpreting changes in Race and Ethnicity over time. Starting with the 2000 Decennial Census, respondents were given a new option of selecting one or more race categories. Also in 2000, the placement of the question about Hispanic origin changed, helping to increase responsiveness to the Hispanic-origin question. Because of these and other changes, the 1990 data on race and ethnicity are not directly comparable with data from later censuses.

(Source: <http://www.census.gov/prod/2001pubs/c2kbr01-1.pdf>;

<http://www.census.gov/pred/www/rpts/Race%20and%20Ethnicity%20FINAL%20report.pdf>)

The "Minority" calculations are derived from Census and ACS data using both the race and ethnicity responses. On this report, "Minority" refers to individuals who list a race other than White and/or list their ethnicity as Hispanic/Latino. In other words, people who are multi-racial, any single race other than White, or Hispanic/Latino of any race are considered minorities.

Disability data is not included in the 2010 Decennial Census, or the 2006-2010 ACS. This data is available in the 2013-2017 ACS.

Because of changes made to the Census and ACS questions between 1990 and 2017, disability variables should not be compared from year to year. For example: 1) With the 1990 data the disabilities are listed as a "work disability" while this distinction is not made with 2000 or 2017 ACS data; 2) The 2017 ACS data includes the institutionalized population (e.g. persons in prisons and group homes), while this population is not included in 1990 or 2000; 3) the age groupings changed over the years.

Please take the following two concerns into account when viewing this data: 1) With the 1990 data the disabilities are listed as a "work disability" while this distinction is not made with 2000 or 2017 ACS data; 2) The 2017 ACS data includes the institutionalized population (e.g. persons in prisons and group homes), while this population is not included in 1990 or 2000.

The category Bachelor's Degree or Higher under the heading Educational Attainment Trends is a subset of the category High School Graduate or Higher.

Income of households. This includes the income of the householder and all other individuals 15 years old and over in the household, whether they are related to the householder or not. Because many households consist of only one person, average household income is usually less than average family income.

Income of families. In compiling statistics on family income, the incomes of all members 15 years old and over related to the householder are summed and treated as a single amount.

Age Trends median age for 1990 is not available.

### **Land Use Data**

The Land Use information Indicates acreages and percentages for the generalized land use types used to group parcel-specific, existing land use assigned by the county property appraiser office according to the Florida Department of Revenue land use codes.

### **Community Facilities Data**

- Assisted Rental Housing Units - Identifies multifamily rental developments that receive funding assistance under federal, state, and local government programs to offer affordable housing as reported by the Shimberg Center for

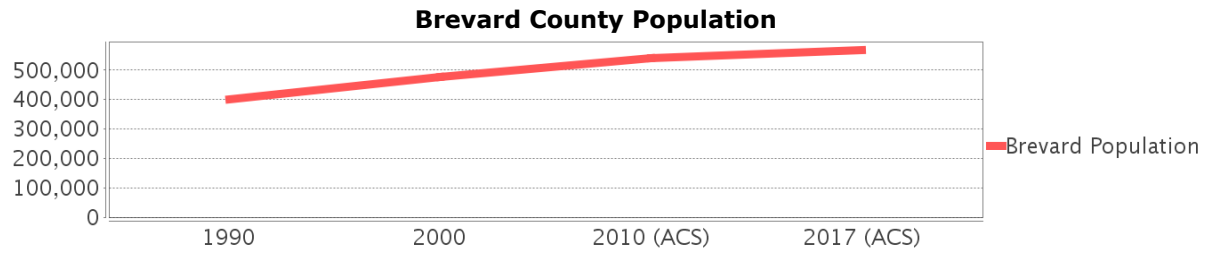
Housing Studies, University of Florida.

- Mobile Home Parks - Identifies approved or acknowledged mobile home parks reported by the Florida Department of Business and Professional Regulation and Florida Department of Health.
- Migrant Camps - Identifies migrant labor camp facilities inspected by the Florida Department of Health.
- Group Care Facilities - Identifies group care facilities inspected by the Florida Department of Health.
- Community Center and Fraternal Association Facilities - Identifies facilities reported by multiple sources.
- Law Enforcement Correctional Facilities - Identifies facilities reported by multiple sources.
- Cultural Centers - Identifies cultural centers including organizations, buildings, or complexes that promote culture and arts (e.g., aquariums and zoological facilities; arboreta and botanical gardens; dinner theaters; drive-ins; historical places and services; libraries; motion picture theaters; museums and art galleries; performing arts centers; performing arts theaters; planetariums; studios and art galleries; and theater producers stage facilities) reported by multiple sources.
- Fire Department and Rescue Station Facilities - Identifies facilities reported by multiple sources.
- Government Buildings - Identifies local, state, and federal government buildings reported by multiple sources.
- Health Care Facilities - Identifies health care facilities including abortion clinics, dialysis clinics, medical doctors, nursing homes, osteopaths, state laboratories/clinics, and surgicenters/walk-in clinics reported by the Florida Department of Health.
- Hospital Facilities - Identifies hospital facilities reported by multiple sources.
- Law Enforcement Facilities - Identifies law enforcement facilities reported by multiple sources.
- Parks and Recreational Facilities - Identifies parks and recreational facilities reported by multiple sources.
- Religious Center Facilities - Identifies religious centers including churches, temples, synagogues, mosques, chapels, centers, and other types of religious facilities reported by multiple sources.
- Private and Public Schools - Identifies private and public schools reported by multiple sources.
- Social Service Centers - Identifies social service centers reported by multiple sources.
- Veteran Organizations and Facilities

# Brevard County Demographic Profile

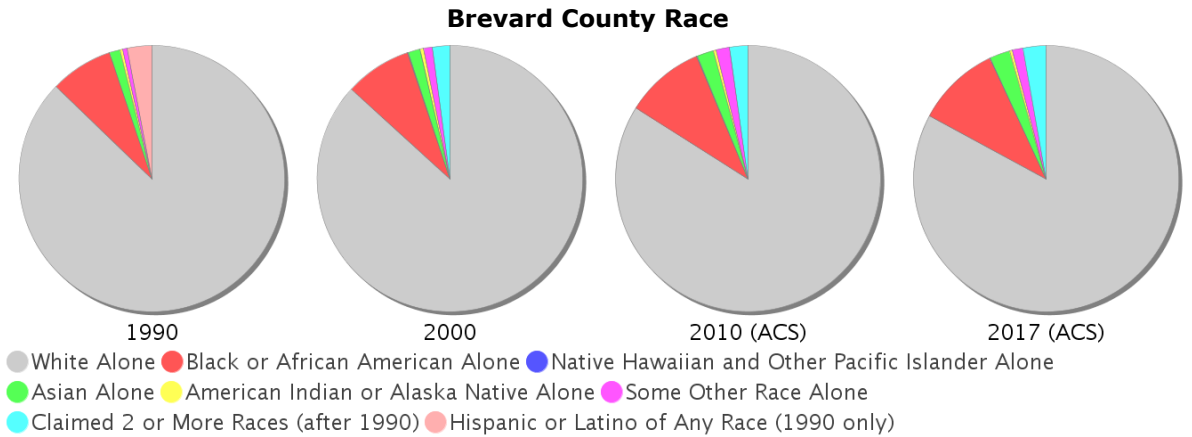
## General Population Trends - Brevard

Description	1990	2000	2010 (ACS)	2017 (ACS)
Total Population	398,978	476,230	540,583	568,183
Total Households	161,365	198,195	220,871	227,223
Average Persons per Acre	0.574	0.705	0.80	0.841
Average Persons per Household	2.473	2.352	2.00	2.47
Average Persons per Family	2.93	2.904	3.025	3.157
Males	197,163	232,983	264,955	277,666
Females	201,815	243,247	275,628	290,517



## Race and Ethnicity Trends - Brevard

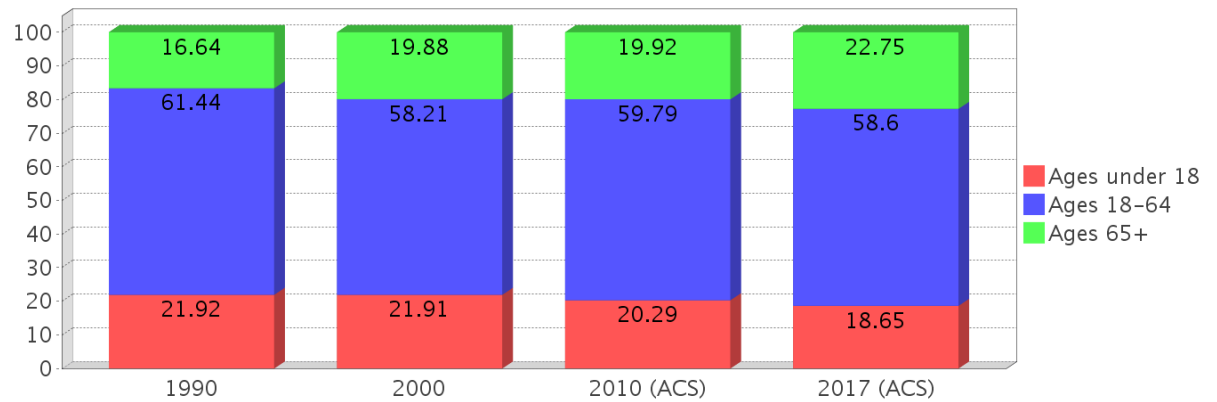
Description	1990	2000	2010 (ACS)	2017 (ACS)
White Alone	358,391 (89.83%)	413,023 (86.73%)	453,634 (83.92%)	470,794 (82.86%)
Black or African American Alone	31,417 (7.87%)	38,680 (8.12%)	52,758 (9.76%)	57,728 (10.16%)
Native Hawaiian and Other Pacific Islander Alone	(NA)	278 (0.06%)	319 (0.06%)	421 (0.07%)
Asian Alone	5,187 (1.30%)	7,122 (1.50%)	11,035 (2.04%)	13,843 (2.44%)
American Indian or Alaska Native Alone	1,369 (0.34%)	2,070 (0.43%)	1,947 (0.36%)	1,945 (0.34%)
Some Other Race Alone	2,422 (0.61%)	4,964 (1.04%)	8,928 (1.65%)	7,410 (1.30%)
Claimed 2 or More Races	(NA)	10,093 (2.12%)	11,962 (2.21%)	16,042 (2.82%)
Hispanic or Latino of Any Race	12,261 (3.07%)	21,902 (4.60%)	40,925 (7.57%)	55,042 (9.69%)
Not Hispanic or Latino	386,717 (96.93%)	454,328 (95.40%)	499,658 (92.43%)	513,141 (90.31%)
Minority	121,910 (30.56%)	77,898 (16.36%)	121,910 (22.55%)	140,474 (24.72%)



### Age Trends - Brevard

Description	1990	2000	2010 (ACS)	2017 (ACS)
Under Age 5	6.61%	5.18%	4.99%	4.72%
Ages 5-17	15.31%	16.73%	15.30%	13.93%
Ages 18-21	4.92%	4.23%	4.73%	4.31%
Ages 22-29	12.48%	7.29%	8.25%	8.90%
Ages 30-39	16.19%	13.96%	10.50%	10.40%
Ages 40-49	11.81%	15.55%	15.25%	11.44%
Ages 50-64	16.04%	17.19%	21.07%	23.54%
Age 65 and Over	16.64%	19.88%	19.92%	22.75%
-Ages 65-74	10.82%	10.94%	10.41%	12.23%
-Ages 75-84	4.73%	7.04%	7.17%	7.47%
-Age 85 and Over	1.09%	1.90%	2.34%	3.04%
Median Age	NA	41	45	47

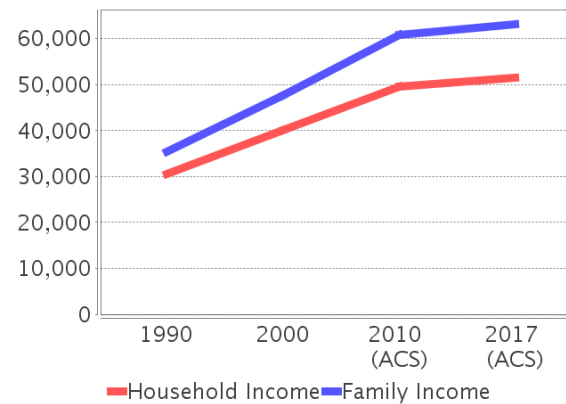
Percentage Population by Age Group - Brevard



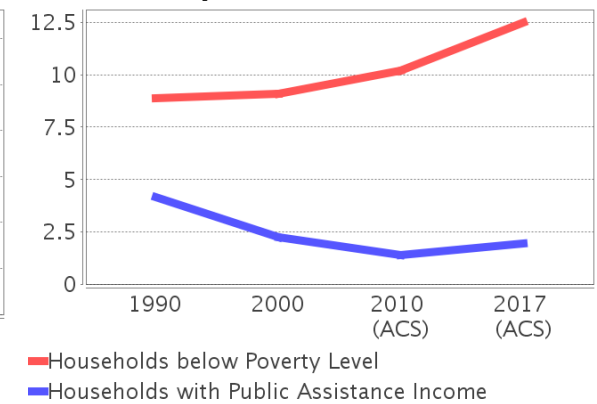
### Income Trends - Brevard

Description	1990	2000	2010 (ACS)	2017 (ACS)
Median Household Income	\$30,534	\$40,099	\$49,523	\$51,536
Median Family Income	\$35,402	\$47,571	\$60,842	\$63,114
Population below Poverty Level	9.13%	9.47%	10.52%	13.37%
Households below Poverty Level	8.89%	9.11%	10.20%	12.49%
Households with Public Assistance Income	4.18%	2.26%	1.38%	1.95%

Income Trends



Poverty and Public Assistance



### Disability Trends - Brevard

See the Data Sources section below for an explanation about the differences in disability data among the various years.

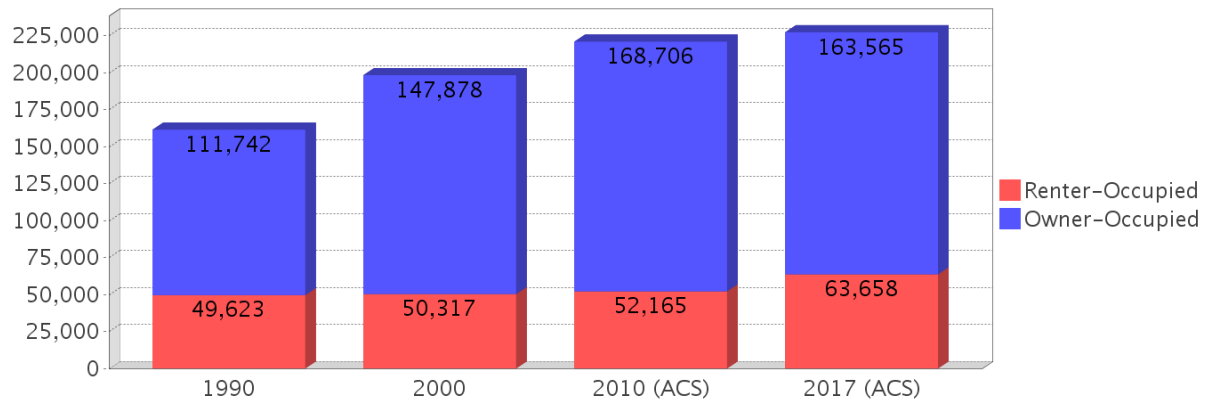
Description	1990	2000	2010 (ACS)	2017 (ACS)
Population 16 To 64 Years with a disability	21,900 (6.99%)	56,763 (12.82%)	NA (NA)	NA (NA)
Population 20 To 64 Years with a disability	NA (NA)	NA (NA)	NA (NA)	38,135 (11.95%)

## Educational Attainment Trends - Brevard

Age 25 and Over

Description	1990	2000	2010 (ACS)	2017 (ACS)
Less than 9th Grade	14,336 (5.17%)	11,314 (3.33%)	9,471 (2.44%)	10,254 (2.45%)
9th to 12th Grade, No Diploma	34,651 (12.49%)	35,102 (10.33%)	27,078 (6.97%)	24,309 (5.80%)
High School Graduate or Higher	228,359 (82.34%)	293,322 (86.34%)	352,024 (90.59%)	384,345 (91.75%)
Bachelor's Degree or Higher	56,574 (20.40%)	80,020 (23.55%)	101,847 (26.21%)	118,861 (28.37%)

## Housing Tenure - Brevard



## Language Trends - Brevard

Age 5 and Over

Description	1990	2000	2010 (ACS)	2017 (ACS)
Speaks English Well	5,377 (1.44%)	7,463 (1.65%)	9,800 (1.91%)	10,921 (2.02%)
Speaks English Not Well	NA	3,748 (0.83%)	4,813 (0.94%)	6,157 (1.14%)
Speaks English Not at All	NA	658 (0.15%)	1,126 (0.22%)	1,449 (0.27%)
Speaks English Not Well or Not at All	3,139 (0.84%)	4,406 (0.98%)	5,939 (1.16%)	7,606 (1.40%)

## Housing Trends - Brevard

Description	1990	2000	2010 (ACS)	2017 (ACS)
Total	185,150	222,072	267,036	274,602
Units per Acre	0.266	0.329	0.395	0.407
Single-Family Units	107,123	146,810	182,849	190,403
Multi-Family Units	36,002	49,971	60,169	62,666
Mobile Home Units	17,130	24,092	23,310	20,959
Owner-Occupied Units	111,742	147,878	168,706	163,565
Renter-Occupied Units	49,623	50,317	52,165	63,658
Vacant Units	23,785	23,877	46,165	47,379
Median Housing Value	\$74,600	\$87,600	\$186,900	\$162,400
Occupied Housing Units w/No Vehicle	8,788 (5.45%)	10,579 (5.34%)	9,967 (4.51%)	12,725 (5.60%)

---

## County Data Sources

Demographic data reported is from the U.S. Decennial Census (1990, 2000) and the American Community Survey (ACS) 5-year estimates from 2006-2010 and 2013-2017. The data was gathered at the county level. Depending on the dataset, the data represents 100% counts (Census Summary File 1) or sample-based information (Census Summary File 3 or ACS).

### About the Census Data:

Use caution when comparing the 100% count data (Decennial Census) to the sample-based data (ACS). In any given year, about one in 40 or 2.5% of U.S. households will receive the ACS questionnaire. Over any five-year period, about one in eight households will receive the questionnaire, as compared to about one in six that received the long form questionnaire for the Decennial Census 2000. (Source: <http://mcdc.missouri.edu/pub/data/acs/Readme.shtml>) The U.S. Census Bureau provides help with this process:

<https://www.census.gov/programs-surveys/acs/guidance/comparing-acs-data/2017.html>

Use caution when interpreting changes in Race and Ethnicity over time. Starting with the 2000 Decennial Census, respondents were given a new option of selecting one or more race categories. Also in 2000, the placement of the question about Hispanic origin changed, helping to increase responsiveness to the Hispanic-origin question. Because of these and other changes, the 1990 data on race and ethnicity are not directly comparable with data from later censuses. (Source: <http://www.census.gov/prod/2001pubs/c2kbr01-1.pdf>;  
<http://www.census.gov/pred/www/rpts/Race%20and%20Ethnicity%20FINAL%20report.pdf>)

The "Minority" calculations are derived from Census and ACS data using both the race and ethnicity responses. On this report, "Minority" refers to individuals who list a race other than White and/or list their ethnicity as Hispanic/Latino. In other words, people who are multi-racial, any single race other than White, or Hispanic/Latino of any race are considered minorities.

Disability data is not included in the 2010 Decennial Census, or the 2006-2010 ACS. This data is available in the 2013-2017 ACS.

Because of changes made to the Census and ACS questions between 1990 and 2017, disability variables should not be compared from year to year. For example: 1) With the 1990 data the disabilities are listed as a "work disability" while this distinction is not made with 2000 or 2017 ACS data; 2) The 2017 ACS data includes the institutionalized population (e.g. persons in prisons and group homes), while this population is not included in 1990 or 2000; 3) the age groupings changed over the years.

Please take the following two concerns into account when viewing this data: 1) With the 1990 data the disabilities are listed as a "work disability" while this distinction is not made with 2000 or 2017 ACS data; 2) The 2017 ACS data includes the institutionalized population (e.g. persons in prisons and group homes), while this population is not included in 1990 or 2000.

source:

<https://www.census.gov/people/disability/methodology/acs.html>

<https://www.census.gov/population/www/cen2000/90vs00/index.html>

The category Bachelor's Degree or Higher under the heading Educational Attainment Trends is a subset of the category High School Graduate or Higher.

---

## Metadata

- Community and Fraternal Centers [https://etdmpub.florida-et.org/metadata/gc\\_communitycenter.htm](https://etdmpub.florida-et.org/metadata/gc_communitycenter.htm)
- Correctional Facilities in Florida [https://etdmpub.florida-et.org/metadata/gc\\_correctional.htm](https://etdmpub.florida-et.org/metadata/gc_correctional.htm)
- Cultural Centers in Florida [https://etdmpub.florida-et.org/metadata/gc\\_culturecenter.htm](https://etdmpub.florida-et.org/metadata/gc_culturecenter.htm)
- Fire Department and Rescue Station Facilities in Florida [https://etdmpub.florida-et.org/metadata/gc\\_firestat.htm](https://etdmpub.florida-et.org/metadata/gc_firestat.htm)
- Local, State, and Federal Government Buildings in Florida [https://etdmpub.florida-et.org/metadata/gc\\_govbuild.htm](https://etdmpub.florida-et.org/metadata/gc_govbuild.htm)
- Florida Health Care Facilities [https://etdmpub.florida-et.org/metadata/gc\\_health.htm](https://etdmpub.florida-et.org/metadata/gc_health.htm)
- Hospital Facilities in Florida [https://etdmpub.florida-et.org/metadata/gc\\_hospitals.htm](https://etdmpub.florida-et.org/metadata/gc_hospitals.htm)
- Law Enforcement Facilities in Florida [https://etdmpub.florida-et.org/metadata/gc\\_lawenforce.htm](https://etdmpub.florida-et.org/metadata/gc_lawenforce.htm)
- Florida Parks and Recreational Facilities [https://etdmpub.florida-et.org/metadata/gc\\_parks.htm](https://etdmpub.florida-et.org/metadata/gc_parks.htm)
- Religious Centers [https://etdmpub.florida-et.org/metadata/gc\\_religion.htm](https://etdmpub.florida-et.org/metadata/gc_religion.htm)
- Florida Public and Private Schools [https://etdmpub.florida-et.org/metadata/gc\\_schools.htm](https://etdmpub.florida-et.org/metadata/gc_schools.htm)
- Social Service Centers [https://etdmpub.florida-et.org/metadata/gc\\_socialservice.htm](https://etdmpub.florida-et.org/metadata/gc_socialservice.htm)
- Assisted Rental Housing Units in Florida [https://etdmpub.florida-et.org/metadata/gc\\_assisted\\_housing.htm](https://etdmpub.florida-et.org/metadata/gc_assisted_housing.htm)
- Group Care Facilities <https://etdmpub.florida-et.org/metadata/groupcare.htm>
- Mobile Home Parks in Florida [https://etdmpub.florida-et.org/metadata/gc\\_mobilehomes.htm](https://etdmpub.florida-et.org/metadata/gc_mobilehomes.htm)
- Migrant Camps in Florida <https://etdmpub.florida-et.org/metadata/migrant.htm>
- Veteran Organizations and Facilities [https://etdmpub.florida-et.org/metadata/gc\\_veterans.htm](https://etdmpub.florida-et.org/metadata/gc_veterans.htm)
- Generalized Land Use - Florida DOT District 5 [https://etdmpub.florida-et.org/metadata/d5\\_lu\\_gen.htm](https://etdmpub.florida-et.org/metadata/d5_lu_gen.htm)
- Census Block Groups in Florida [https://etdmpub.florida-et.org/metadata/e2\\_cenacs\\_cci.htm](https://etdmpub.florida-et.org/metadata/e2_cenacs_cci.htm)
- 1990 Census Block Groups in Florida [https://etdmpub.florida-et.org/metadata/e2\\_cenblkgrp\\_1990\\_cci.htm](https://etdmpub.florida-et.org/metadata/e2_cenblkgrp_1990_cci.htm)
- 2000 Census Block Groups in Florida [https://etdmpub.florida-et.org/metadata/e2\\_cenblkgrp\\_2000\\_cci.htm](https://etdmpub.florida-et.org/metadata/e2_cenblkgrp_2000_cci.htm)
- 2010 Census Block Groups in Florida [https://etdmpub.florida-et.org/metadata/e2\\_cenblkgrp\\_2010\\_cci.htm](https://etdmpub.florida-et.org/metadata/e2_cenblkgrp_2010_cci.htm)