

Sociocultural Data Report

Myrtle Grove

Area: 6.721 square miles
Jurisdiction(s): Cities: NA
 Counties: Escambia

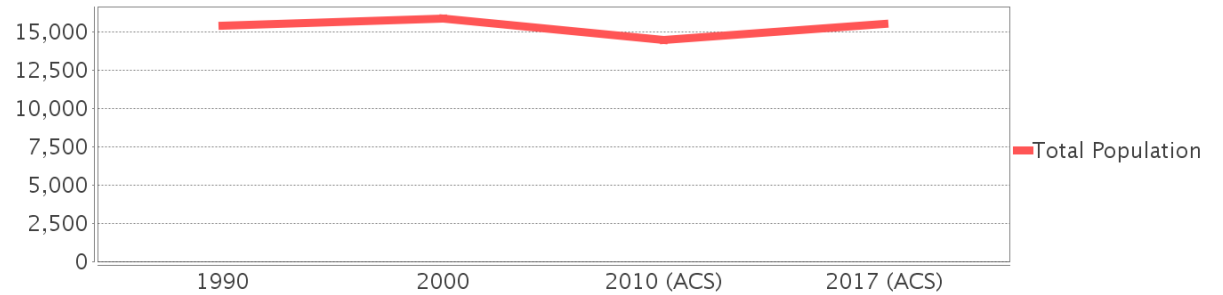
General Population Trends

Description	1990	2000	2010 (ACS)	2017 (ACS)
Total Population	15,403	15,852	14,449	15,523
Total Households	5,261	5,722	5,431	5,697
Average Persons per Acre	3.99	4.34	4.81	5.26
Average Persons per Household	2.78	2.49	2.43	2.46
Average Persons per Family	3.09	3.11	3.00	3.38
Males	8,164	8,113	7,501	7,877
Females	7,238	7,738	6,948	7,646

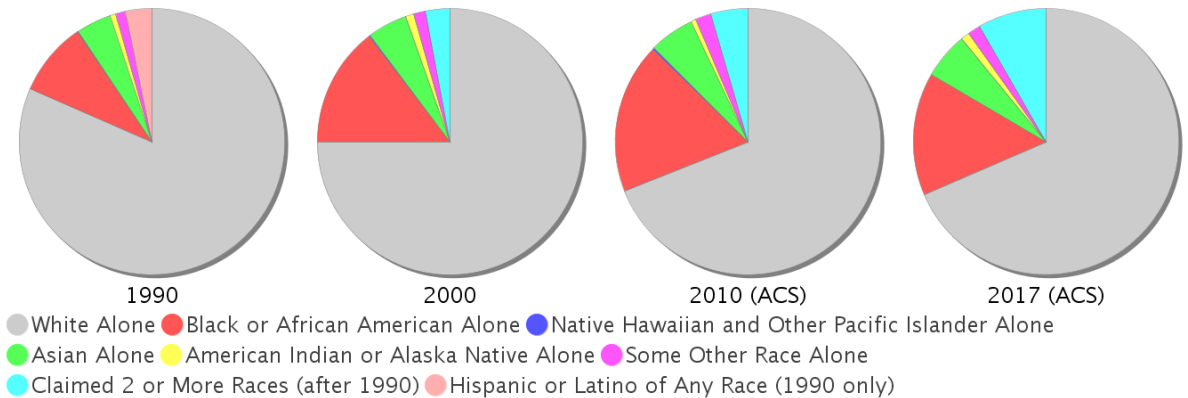
Race and Ethnicity Trends

Description	1990	2000	2010 (ACS)	2017 (ACS)
White Alone	12,976 (84.24%)	11,887 (74.99%)	9,967 (68.98%)	10,636 (68.52%)
Black or African American Alone	1,436 (9.32%)	2,313 (14.59%)	2,641 (18.28%)	2,313 (14.90%)
Native Hawaiian and Other Pacific Islander Alone	17 (0.11%)	22 (0.14%)	28 (0.19%)	0 (0.00%)
Asian Alone	676 (4.39%)	773 (4.88%)	792 (5.48%)	881 (5.68%)
American Indian or Alaska Native Alone	121 (0.79%)	160 (1.01%)	93 (0.64%)	157 (1.01%)
Some Other Race Alone	176 (1.14%)	229 (1.44%)	273 (1.89%)	245 (1.58%)
Claimed 2 or More Races	NA (NA)	467 (2.95%)	654 (4.53%)	1,291 (8.32%)
Hispanic or Latino of Any Race	520 (3.38%)	639 (4.03%)	922 (6.38%)	1,427 (9.19%)
Not Hispanic or Latino	14,883 (96.62%)	15,213 (95.97%)	13,527 (93.62%)	14,096 (90.81%)
Minority	2,712 (17.61%)	4,276 (26.97%)	4,964 (34.36%)	5,999 (38.65%)

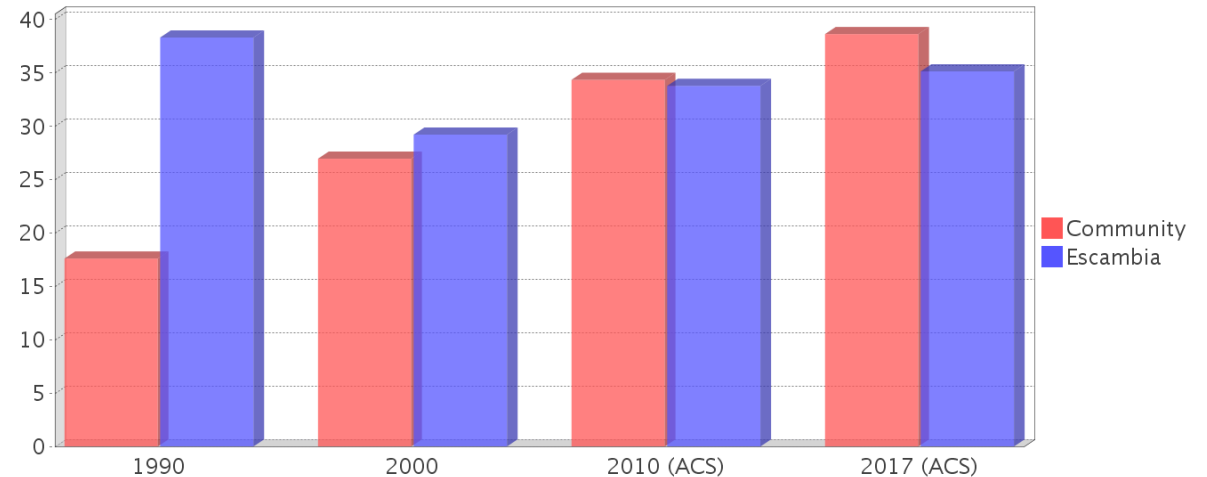
Population



Race



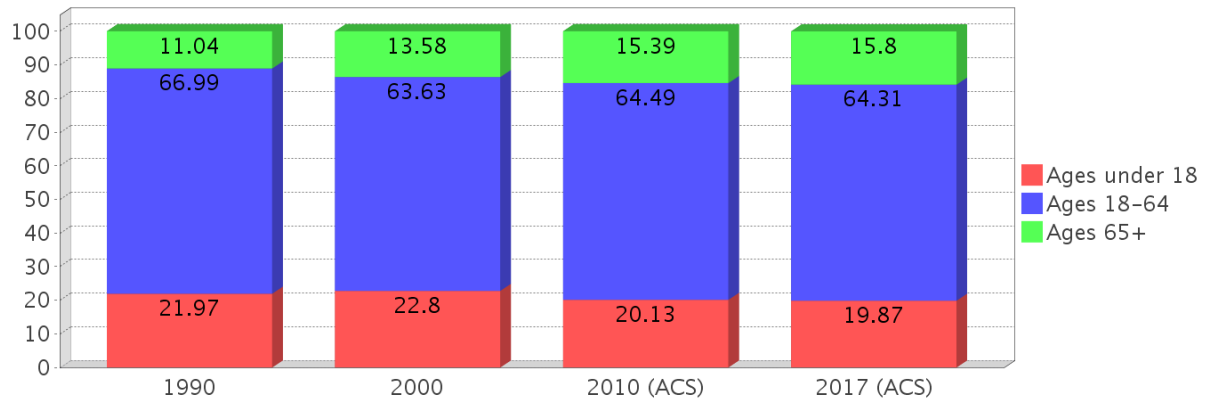
Minority Percentage Population



Age Trends

Description	1990	2000	2010 (ACS)	2017 (ACS)
Under Age 5	6.82%	6.06%	6.41%	7.90%
Ages 5-17	15.15%	16.74%	13.72%	11.98%
Ages 18-21	13.17%	9.86%	12.64%	8.85%
Ages 22-29	15.92%	14.43%	14.10%	16.60%
Ages 30-39	14.21%	14.74%	10.50%	11.15%
Ages 40-49	10.31%	11.73%	10.64%	10.01%
Ages 50-64	13.38%	12.88%	16.60%	17.70%
Age 65 and Over	11.04%	13.58%	15.39%	15.80%
-Ages 65-74	7.67%	7.56%	7.86%	9.08%
-Ages 75-84	2.77%	5.28%	5.67%	4.75%
-Age 85 and Over	0.60%	0.73%	1.86%	1.98%
Median Age	NA	34	34	38

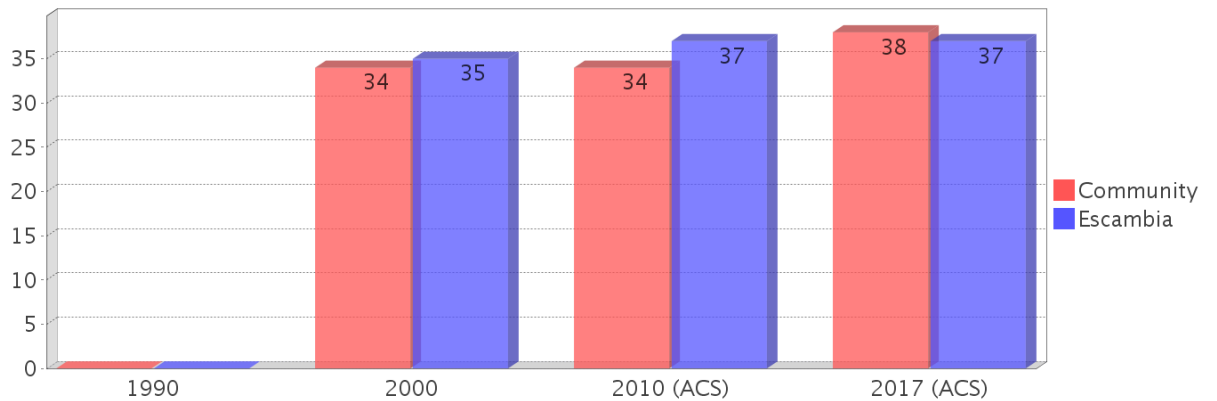
Percentage Population by Age Group



Income Trends

Description	1990	2000	2010 (ACS)	2017 (ACS)
Median Household Income	\$23,866	\$31,256	\$36,066	\$39,000
Median Family Income	\$26,242	\$34,658	\$43,304	\$50,000
Population below Poverty Level	10.53%	12.55%	22.58%	16.00%
Households below Poverty Level	11.63%	12.58%	18.04%	12.29%
Households with Public Assistance Income	4.69%	2.11%	2.52%	2.07%

Median Age Comparison

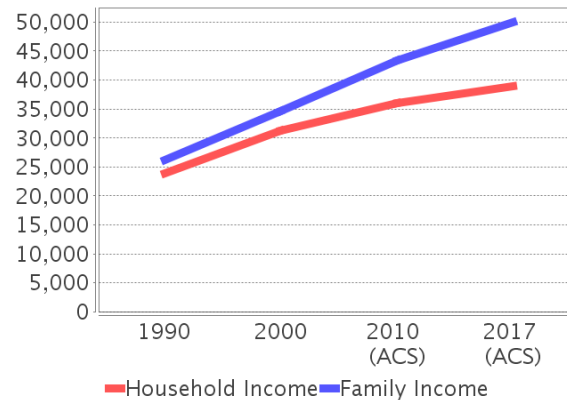


Disability Trends

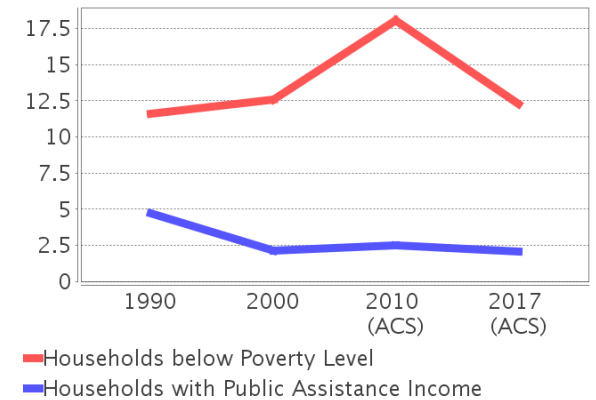
See the Data Sources section below for an explanation about the differences in disability data among the various years.

Description	1990	2000	2010 (ACS)	2017 (ACS)
Population 16 To 64 Years with a disability	871 (9.46%)	1343 (10.91%)	(NA)	(NA)
Population 20 To 64 Years with a disability	(NA)	(NA)	(NA)	1302 (15.94%)

Income Trends



Poverty and Public Assistance



Educational Attainment Trends

Age 25 and Over

Description	1990	2000	2010 (ACS)	2017 (ACS)
Less than 9th Grade	611 (6.80%)	480 (4.93%)	283 (3.18%)	328 (3.25%)
9th to 12th Grade, No Diploma	1,125 (12.52%)	1,022 (10.50%)	578 (6.50%)	802 (7.94%)
High School Graduate or Higher	7,251 (80.68%)	8,229 (84.56%)	8,036 (90.32%)	8,977 (88.82%)
Bachelor's Degree or Higher	1,474 (16.40%)	1,825 (18.75%)	1,598 (17.96%)	1,914 (18.94%)

Language Trends

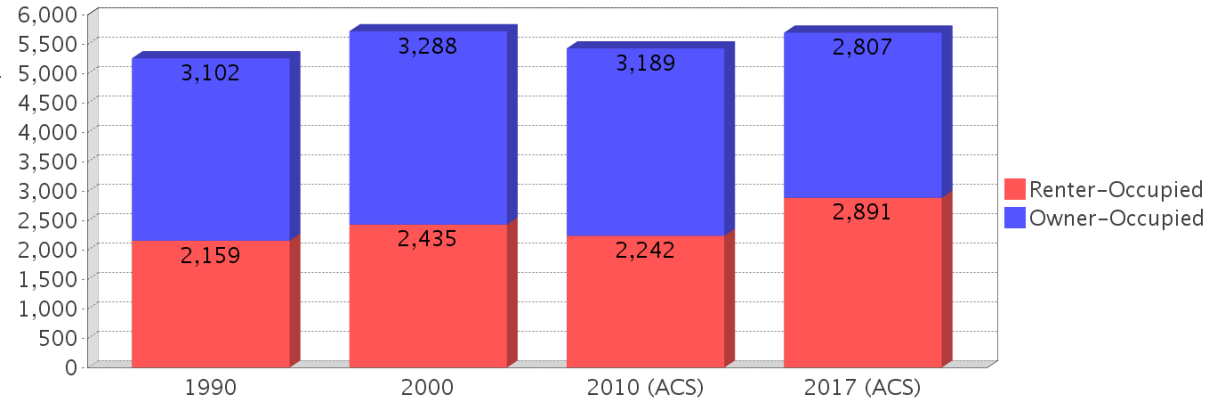
Age 5 and Over

Description	1990	2000	2010 (ACS)	2017 (ACS)
Speaks English Well	212 (1.49%)	406 (2.73%)	505 (3.74%)	320 (2.24%)
Speaks English Not Well	NA (NA)	161 (1.08%)	293 (2.17%)	79 (0.55%)
Speaks English Not at All	NA (NA)	13 (0.09%)	50 (0.37%)	48 (0.34%)
Speaks English Not Well or Not at All	133 (0.93%)	174 (1.17%)	343 (2.54%)	127 (0.89%)

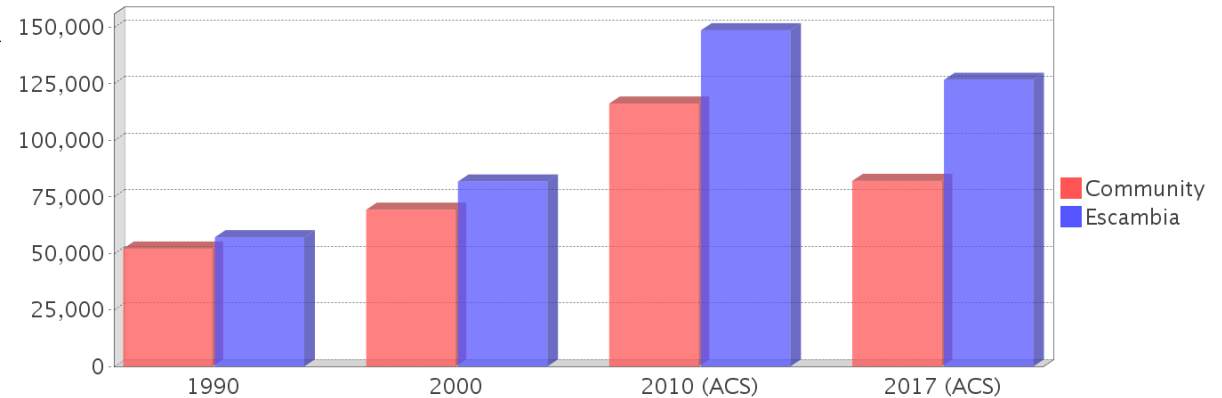
Housing Trends

Description	1990	2000	2010 (ACS)	2017 (ACS)
Total	5,681	6,279	6,335	6,621
Units per Acre	1.33	1.48	1.65	1.72
Single-Family Units	3,523	3,988	4,059	4,222
Multi-Family Units	1,263	1,695	1,741	1,998
Mobile Home Units	446	593	450	394
Owner-Occupied Units	3,102	3,288	3,189	2,807
Renter-Occupied Units	2,159	2,435	2,242	2,891
Vacant Units	420	556	903	923
Median Housing Value	\$52,100	\$69,250	\$116,200	\$82,000
Occupied Housing Units w/No Vehicle	202 (3.84%)	326 (5.70%)	305 (5.61%)	293 (5.14%)

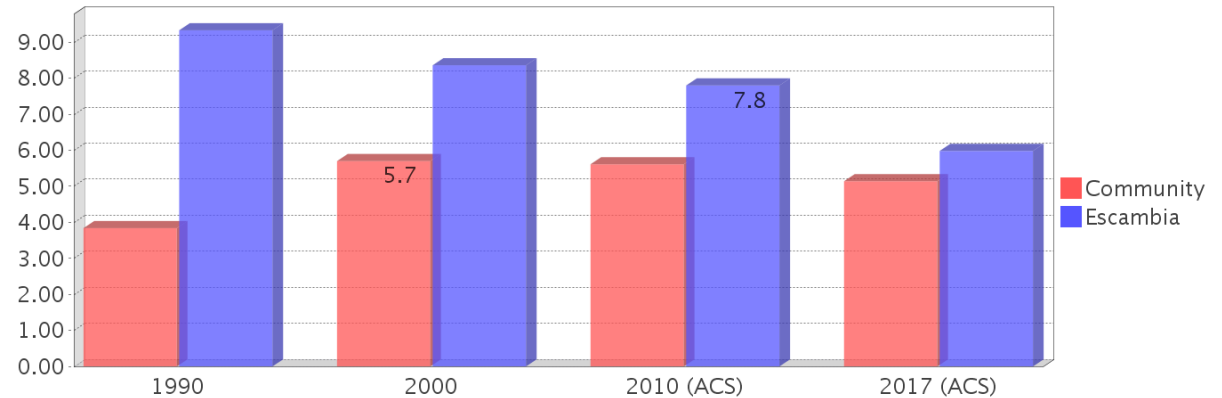
Housing Tenure



Median Housing Value Comparison

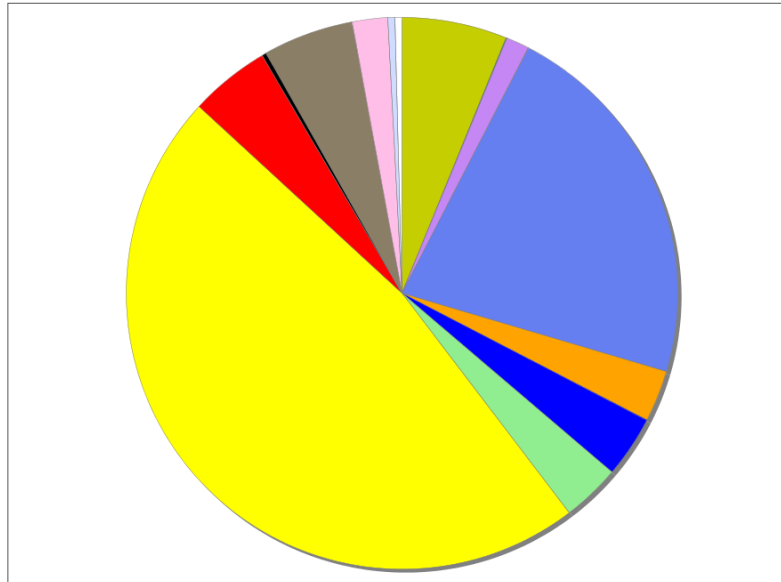


Occupied Units With No Vehicles Available



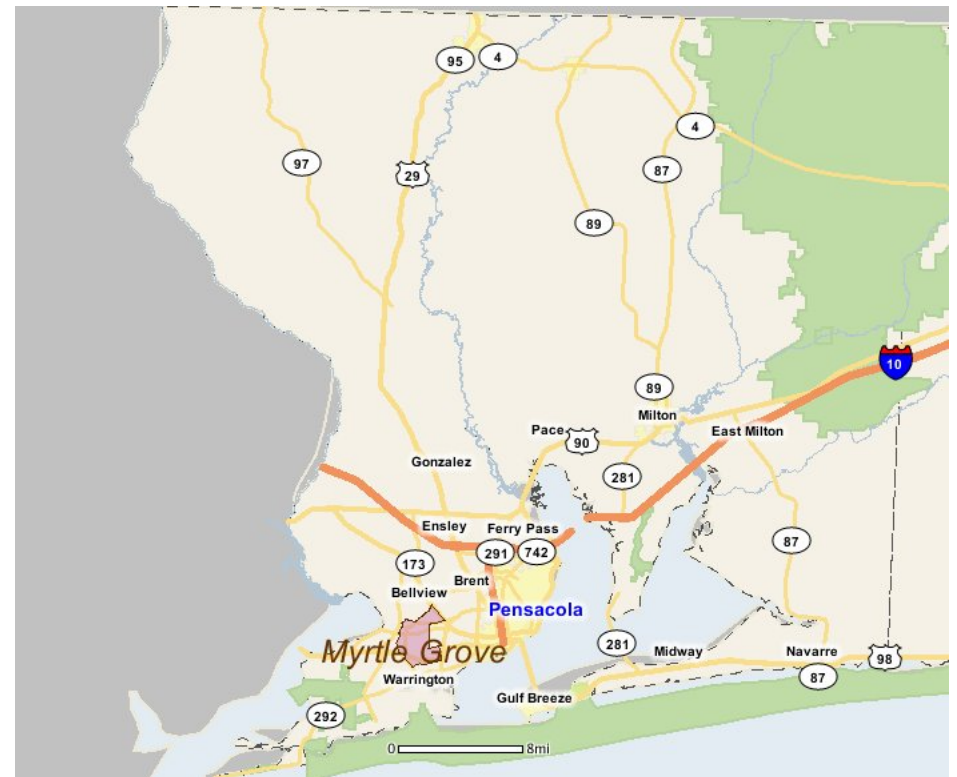
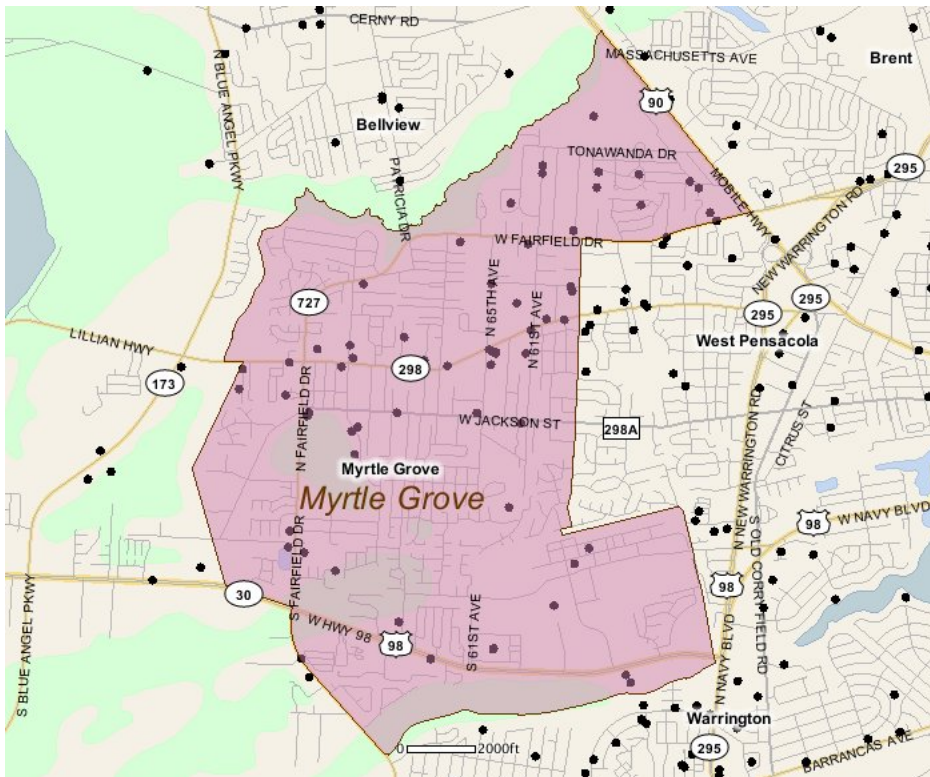
Existing Land Use

Land Use Type	Acres	Percentage
Acreage Not Zoned For Agriculture	235	5.46%
Agricultural	2	0.05%
Centrally Assessed	0	0.00%
Industrial	53	1.23%
Institutional	840	19.53%
Mining	0	0.00%
Other	115	2.67%
Public/Semi-Public	139	3.23%
Recreation	130	3.02%
Residential	1,802	41.90%
Retail/Office	180	4.18%
Row	10	0.23%
Vacant Residential	202	4.70%
Vacant Nonresidential	80	1.86%
Water	16	0.37%
Parcels With No Values	15	0.35%



- Acreage Not Zoned For Agriculture
- Agricultural
- Centrally Assessed
- Industrial
- Institutional
- Mining
- Other
- Public/Semi-Public
- Recreation
- Residential
- Retail/Office
- Row
- Vacant Residential
- Vacant Nonresidential
- Water
- Parcels With No Values

Location Maps



Community Facilities

The community facilities information below is useful in a variety of ways for environmental evaluations. These community resources should be evaluated for potential sociocultural effects, such as accessibility and relocation potential. The facility types may indicate the types of population groups present in the project study area. Facility staff and leaders can be sources of community information such as who uses the facility and how it is used. Additionally, community facilities are potential public meeting venues.

Assisted Housing (Points)

Facility Name	Address	Zip Code
FAIRFIELD VILLAGE	601 N FAIRFIELD DR	32506

Community Centers (Points)

Facility Name	Address	Zip Code
KNIGHTS OF COLUMBUS 13389 - ST THERESE LIISIEUX	913 - 63RD AVE	32506
ELKS LODGE 2108	727 S 72ND AVE	32506
MASONIC LODGE - MYRTLE GROVE 352 F & AM	7667 W FAIRFIELD DR	32506
WOMANS CLUB - MYRTLE GROVE	885 N 70TH AVE	32506

Correctional Facilities (Points)

Facility Name	Address	Zip Code
PENSACOLA BOYS BASE/ESCAMBIA BOYS BASE	BUILDING 3780 CORRY STATION	32511

Cultural Centers (Points)

Facility Name	Address	Zip Code
WARRINGTON CAMPUS LIBRARY - PENSACOLA JUNIOR COLLEGE	5555 W US HWY 98	32507
NAVAL HOSPITAL - MEDICAL LIBRARY CODE 185	6000 W US HWY 98	32512

Fire Stations (Points)

Facility Name	Address	Zip Code
MYRTLE GROVE VOLUNTEER FIRE DEPARTMENT STATION 11	7209 LILLIAN HWY	32506

Florida Parks and Recreational Facilities (Points)

Facility Name	Address	Zip Code
MINNEHAHA PARK / OSCEOLA PARK II	TALLADEGA TRL & CHEROKEE TRL	32506
77TH AVENUE PARK	400 77TH AVE	32506
OSCEOLA PARK I	302 COMANCHE TRL	32506
OSCEOLA MUNICIPAL GOLF COURSE	300 TONAWANDA DR	32506
OSCEOLA PARK III	BANCROFT TRL	32506
MYRTLE GROVE ATHLETIC PARK	99 N 61ST AVE	32506
PARISH HEIGHTS PARK	1800 SANDRA DR BLK	32506
FORTE ESTATES PARK	N 77TH AVE & BARRINGTON CT	32506
BARRINGTON COURT PARK	BARRINGTON CT & N 77TH AVE	32506
SHERWOOD/GENE PICKERILL PARK	18 GAMWELL RD	32506

Government Building

Facility Name	Address	Zip Code
U S POST OFFICE - CORRY STATION	440 ROBERTS AVE	32511

Healthcare Facilities (Geocoded)

Facility Name	Address	Zip Code
BAPTIST MEDICAL GROUP FAMILY MEDICINE - WEST SIDE	6715 HWY 98 W	32506
WEST FLORIDA PRIMARY CARE - WEST PENSACOLA	321 S FAIRFIELD DRIVE	32506
WEST PENSACOLA DIALYSIS CENTER	598 N FAIRFIELD DRIVE, SUITE 100	32506
SACRED HEART MEDICAL GROUP - MOBILE HWY	4929 MOBILE HIGHWAY	32506

Facility Name	Address	Zip Code
RENAL CARE GROUP - PENSACOLA LLC - WEST PENSACOLA	8187 W FAIRFIELD DRIVE	32506

Hospitals (Points)

Facility Name	Address	Zip Code
NAVAL HOSPITAL/PENSACOLA	6000 W HIGHWAY 98	32512

Mobile Home Parks in Florida

Facility Name	Address	Zip Code
OAK LODGE MHP	7101 LILLIAN HWY	32506
BOOKER MOBILE HOME PARK	5800 LILLIAN HWY	32506
ADMIRAL MOBILE HOME PARK	8121 LILLIAN HWY	32506
ASHTON RUN MHP	1000 S FAIRFIELD DR	32506
OAK SHADOWS MOBILE HOME PARK	5700 FLAXMAN ST	32506
MAGNOLIA MOBILE HOME PARK	7216 W JACKSON ST	32506

Public and Private Schools (Points)

Facility Name	Address	Zip Code
LITTLE FLOWER CATHOLIC	6495 LILLIAN HIGHWAY	32506
ESCAMBIA HIGH SCHOOL	1310 N 65TH AVE	32506
PENSACOLA STATE COLLEGE - WARRINGTON CAMPUS	5555 W HIGHWAY 98	32507
MYRTLE GROVE ELEMENTARY SCHOOL	6115 LILLIAN HWY	32506
LUTHERAN MINISTRIES	4610 W FAIRFIELD DR	32506
CHRISTIAN INSTITUTE OF ARTS AND SCIENCES	2007 NORTH 61ST AVE.	32506
SHERWOOD ELEMENTARY SCHOOL	501 CHEROKEE TRL	32506
KNOWLEDGE & FUN HEAD START	596 N FAIRFIELD DR	32506
PRECIOUS LIL ANGELS	6119 W JACKSON ST	32506

Religious Centers (Points)

Facility Name	Address	Zip Code
GRACE ASSEMBLY OF GOD	6117 W FAIRFIELD DR	32506
HEARTS OF LOVE MINISTRY	6847 W FAIRFIELD DR	32506
MOTHER THERESA OF CALCUTTA MISSION	920 NORTH 65TH AVENUE	32506
LUTHERAN SERVICES FLORIDA	4610 W FAIRFIELD DRIVE	32506
FAIRFIELD DRIVE BAPTIST CHURCH	401 S FAIRFIELD DR	32506
EMMAUS BAPTIST CHURCH & FAITH CENTER	6516 WEST JACKSON STREET	32506
LITTLE FLOWER CATHOLIC CHURCH	6495 LILLIAN HIGHWAY	32506
WESTWOOD CHRISTIAN CHURCH	1111 N 57TH AVE	32506
WEST FLORIDA BAPTIST INSTITUTE	6812 LILLIAN HWY	32506
LIVING WORD ASSEMBLY	615 STAFFORD LN	32506
FAIRFIELD PRESBYTERIAN CHURCH	410 SOUTH FAIRFIELD DRIVE	32506
MYRTLE GROVE CHURCH OF CHRIST	7700 LILLIAN HWY	32506
LANDMARK MISSIONARY BAPTIST OF PENSACOLA	7622 LILLIAN HWY	32506
MYRTLE GROVE BAPTIST CHURCH	5920 LILLIAN HIGHWAY	32506
CHURCH FIL AM MISSIONARY BAPTIST CHURCH	723 STAFFORD LN	32506
AGAPE CHRISTIAN MINISTRIES	1603 N 58TH AVENUE	32506

US Census Places

Facility Name
Myrtle Grove
Warrington
West Pensacola
Bellview

Veteran Organizations and Facilities (Points)

Facility Name	Address	Zip Code
ESCAMBIA COUNTY VETERANS SERVICE OFFICE	790 VETERANS WAY	32507

Facility Name

VETERANS AFFAIRS OUTPATIENT CLINIC
PENSACOLA

Address

790 VETERANS WAY

Zip Code

32507

Block Groups

The following Census Block Groups were used to calculate demographics for this report.

1990 Census Block Groups

120330028004, 120330033039, 120330029004, 120330027001, 120330029001, 120330030003, 120330027006, 120330028009, 120330029005, 120330027007, 120330028002, 120330030001, 120330021005, 120330028003, 120330028001

2000 Census Block Groups

120330030001, 120330027024, 120330029001, 120330028021, 120330029004, 120330030003, 120330028012, 120330028022, 120330029005, 120330030002, 120330033062, 120330033071, 120330027021, 120330028011, 120330028041, 120330027025, 120330028031

2010 Census Block Groups

120330028011, 120330029001, 120330030001, 120330028023, 120330030002, 120330030003, 120330028031, 120330027042, 120330028042, 120330033062, 120330028022, 120330027031, 120330028041, 120330028012, 120330029004, 120330028032, 120330029002, 120330033064, 120330027041, 120330028021, 120330033071

2017 Census Block Groups

120330028022, 120330028012, 120330028023, 120330033071, 120330029004, 120330030001, 120330030002, 120330029002, 120330027041, 120330028042, 120330028021, 120330028011, 120330029001, 120330028032, 120330027042, 120330027031, 120330028041, 120330028031, 120330033062, 120330033064, 120330030003

Data Sources

Area

The geographic area of the community based on a user-specified community boundary or area of interest (AOI) boundary.

Jurisdiction

Jurisdiction(s) includes local government boundaries that intersect the community or AOI boundary.

Demographic Data

Demographic data reported under the headings General Population Trends, Race and Ethnicity Trends, Age Trends, Income Trends, Educational Attainment Trends, Language Trends, and Housing Trends is from the U.S. Decennial Census (1990, 2000) and the American Community Survey (ACS) 5-year estimates from 2006-2010 and 2013-2017. The data was gathered at the block group level for user-specified community boundaries and AOIs, and at the county level for counties. Depending on the dataset, the data represents 100% counts (Census Summary File 1) or sample-based information (Census Summary File 3 or ACS).

About the Census Data:

User-specified community boundaries and AOIs do not always correspond precisely to block group boundaries. In these instances, adjustment of the geographic area and data for affected block groups is required to estimate the actual population. To improve the accuracy of such estimates in the SDR report, the census block group data was adjusted to exclude all census blocks with a population of two or fewer. These areas were eliminated from the corresponding years' block groups. Next, the portion of the block group that lies outside of the community or AOI boundary was removed. The demographics within each block group were then recalculated, assuming an equal area distribution of the population.

Note that there may be areas where there is no population.

Use caution when comparing the 100% count data (Decennial Census) to the sample-based data (ACS). In any given year, about one in 40 or 2.5% of U.S. households will receive the ACS questionnaire. Over any five-year period, about one in eight households will receive the questionnaire, as compared to about one in six that received the long form questionnaire for the Decennial Census 2000. (Source: <http://mcdc.missouri.edu/pub/data/acs/Readme.shtml>) The U.S. Census Bureau provides help with this process:

<https://www.census.gov/programs-surveys/acs/guidance/comparing-acs-data/2017.html>

Use caution when interpreting changes in Race and Ethnicity over time. Starting with the 2000 Decennial Census, respondents were given a new option of selecting one or more race categories. Also in 2000, the placement of the question about Hispanic origin changed, helping to increase responsiveness to the Hispanic-origin question. Because of these and other changes, the 1990 data on race and ethnicity are not directly comparable with data from later censuses. (Source: <http://www.census.gov/prod/2001pubs/c2kbr01-1.pdf>; <http://www.census.gov/pred/www/rpts/Race%20and%20Ethnicity%20FINAL%20report.pdf>)

The "Minority" calculations are derived from Census and ACS data using both the race and ethnicity responses. On this report, "Minority" refers to individuals who list a race other than White and/or list their ethnicity as Hispanic/Latino. In other words, people who are multi-racial, any single race other than White, or Hispanic/Latino of any race are considered minorities.

Disability data is not included in the 2010 Decennial Census, or the 2006-2010 ACS. This data is available in the 2013-2017 ACS.

Because of changes made to the Census and ACS questions between 1990 and 2017, disability variables should not be compared from year to year. For example: 1) With the 1990 data the disabilities are listed as a "work disability" while this distinction is not made with 2000 or 2017 ACS data; 2) The 2017 ACS data includes the institutionalized population (e.g. persons in prisons and group homes), while this population is not included in 1990 or 2000; 3) the age groupings changed over the years.

Please take the following two concerns into account when viewing this data: 1) With the 1990 data the disabilities are listed as a "work disability" while this distinction is not made with 2000 or 2017 ACS data; 2) The 2017 ACS data includes the institutionalized population (e.g. persons in prisons and group homes), while this population is not included in 1990 or 2000.

The category Bachelor's Degree or Higher under the heading Educational Attainment Trends is a subset of the category High School Graduate or Higher.

Income of households. This includes the income of the householder and all other individuals 15 years old and over in the household, whether they are related to the householder or not. Because many households consist of only one person, average household income is usually less than average family income.

Income of families. In compiling statistics on family income, the incomes of all members 15 years old and over related to the householder are summed and treated as a single amount.

Age Trends median age for 1990 is not available.

Land Use Data

The Land Use information Indicates acreages and percentages for the generalized land use types used to group parcel-specific, existing land use assigned by the county property appraiser office according to the Florida Department of Revenue land use codes.

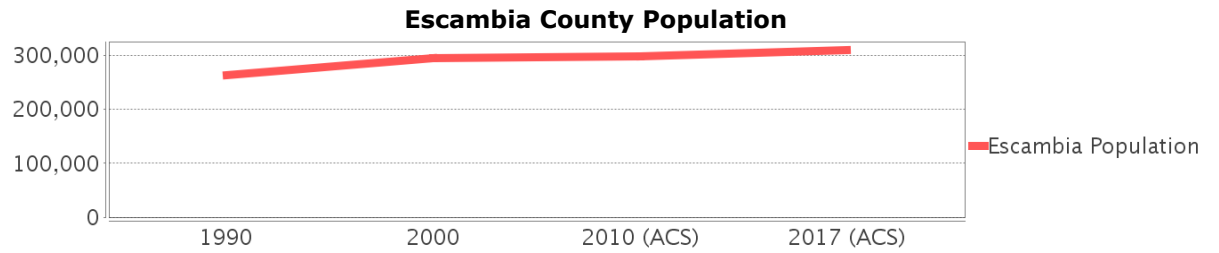
Community Facilities Data

- Assisted Rental Housing Units - Identifies multifamily rental developments that receive funding assistance under federal, state, and local government programs to offer affordable housing as reported by the Shimberg Center for Housing Studies, University of Florida.
- Mobile Home Parks - Identifies approved or acknowledged mobile home parks reported by the Florida Department of Business and Professional Regulation and Florida Department of Health.
- Migrant Camps - Identifies migrant labor camp facilities inspected by the Florida Department of Health.
- Group Care Facilities - Identifies group care facilities inspected by the Florida Department of Health.
- Community Center and Fraternal Association Facilities - Identifies facilities reported by multiple sources.
- Law Enforcement Correctional Facilities - Identifies facilities reported by multiple sources.
- Cultural Centers - Identifies cultural centers including organizations, buildings, or complexes that promote culture and arts (e.g., aquariums and zoological facilities; arboreta and botanical gardens; dinner theaters; drive-ins; historical places and services; libraries; motion picture theaters; museums and art galleries; performing arts centers; performing arts theaters; planetariums; studios and art galleries; and theater producers stage facilities) reported by multiple sources.
- Fire Department and Rescue Station Facilities - Identifies facilities reported by multiple sources.
- Government Buildings - Identifies local, state, and federal government buildings reported by multiple sources.
- Health Care Facilities - Identifies health care facilities including abortion clinics, dialysis clinics, medical doctors, nursing homes, osteopaths, state laboratories/clinics, and surgicenters/walk-in clinics reported by the Florida Department of Health.
- Hospital Facilities - Identifies hospital facilities reported by multiple sources.
- Law Enforcement Facilities - Identifies law enforcement facilities reported by multiple sources.
- Parks and Recreational Facilities - Identifies parks and recreational facilities reported by multiple sources.
- Religious Center Facilities - Identifies religious centers including churches, temples, synagogues, mosques, chapels, centers, and other types of religious facilities reported by multiple sources.
- Private and Public Schools - Identifies private and public schools reported by multiple sources.
- Social Service Centers - Identifies social service centers reported by multiple sources.
- Veteran Organizations and Facilities

Escambia County Demographic Profile

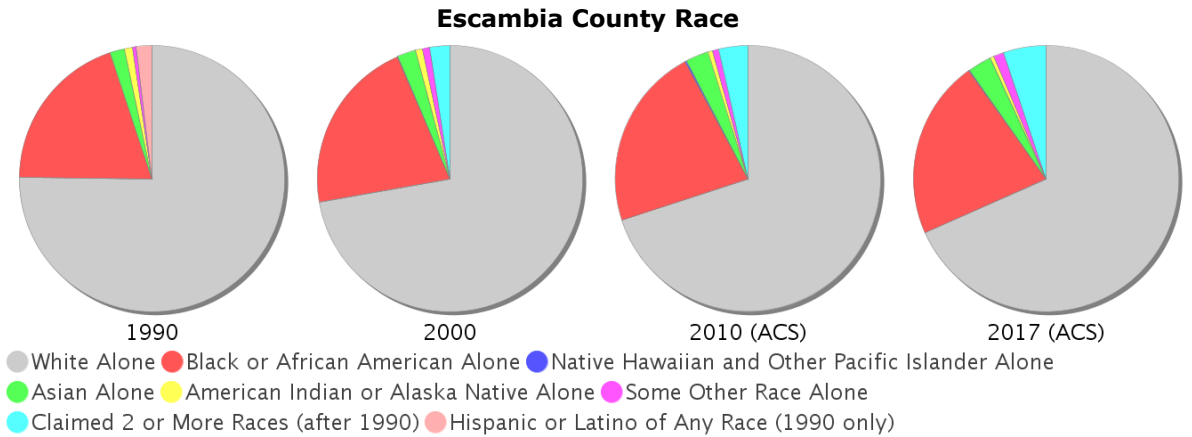
General Population Trends - Escambia

Description	1990	2000	2010 (ACS)	2017 (ACS)
Total Population	262,798	294,410	297,940	309,924
Total Households	98,608	111,049	113,313	117,836
Average Persons per Acre	0.614	0.685	0.693	0.723
Average Persons per Household	2.665	2.455	2.00	2.47
Average Persons per Family	3.111	3.055	3.089	3.293
Males	127,599	146,045	147,521	153,834
Females	135,199	148,365	150,419	156,090



Race and Ethnicity Trends - Escambia

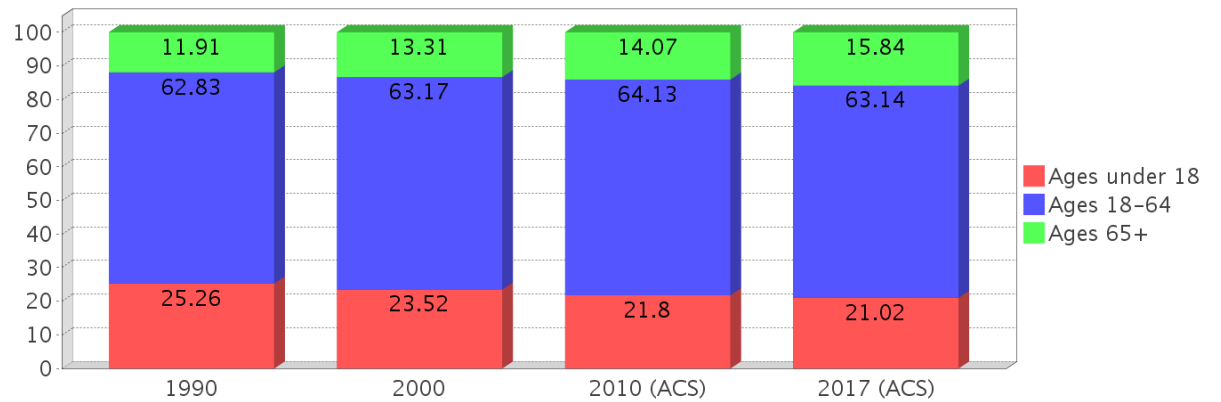
Description	1990	2000	2010 (ACS)	2017 (ACS)
White Alone	201,235 (76.57%)	212,596 (72.21%)	208,376 (69.94%)	211,815 (68.34%)
Black or African American Alone	52,618 (20.02%)	62,691 (21.29%)	66,202 (22.22%)	67,398 (21.75%)
Native Hawaiian and Other Pacific Islander Alone	(NA)	235 (0.08%)	481 (0.16%)	368 (0.12%)
Asian Alone	4,841 (1.84%)	6,565 (2.23%)	8,255 (2.77%)	9,050 (2.92%)
American Indian or Alaska Native Alone	2,632 (1.00%)	2,522 (0.86%)	1,742 (0.58%)	1,411 (0.46%)
Some Other Race Alone	1,265 (0.48%)	2,630 (0.89%)	2,205 (0.74%)	3,739 (1.21%)
Claimed 2 or More Races	(NA)	7,171 (2.44%)	10,679 (3.58%)	16,143 (5.21%)
Hispanic or Latino of Any Race	5,013 (1.91%)	7,816 (2.65%)	13,385 (4.49%)	16,935 (5.46%)
Not Hispanic or Latino	257,785 (98.09%)	286,594 (97.35%)	284,555 (95.51%)	292,989 (94.54%)
Minority	100,718 (38.33%)	86,062 (29.23%)	100,718 (33.80%)	108,961 (35.16%)



Age Trends - Escambia

Description	1990	2000	2010 (ACS)	2017 (ACS)
Under Age 5	7.37%	6.04%	6.26%	6.06%
Ages 5-17	17.89%	17.48%	15.54%	14.96%
Ages 18-21	7.09%	7.60%	8.38%	7.42%
Ages 22-29	13.60%	11.34%	11.55%	12.80%
Ages 30-39	15.84%	14.42%	11.54%	11.93%
Ages 40-49	12.35%	14.66%	13.65%	11.17%
Ages 50-64	13.96%	15.15%	19.00%	19.81%
Age 65 and Over	11.91%	13.31%	14.07%	15.84%
-Ages 65-74	7.43%	7.38%	7.59%	9.20%
-Ages 75-84	3.50%	4.64%	4.74%	4.90%
-Age 85 and Over	0.97%	1.30%	1.74%	1.75%
Median Age	NA	35	37	37

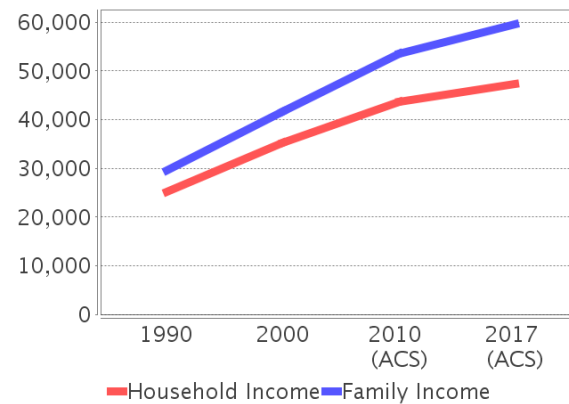
Percentage Population by Age Group - Escambia



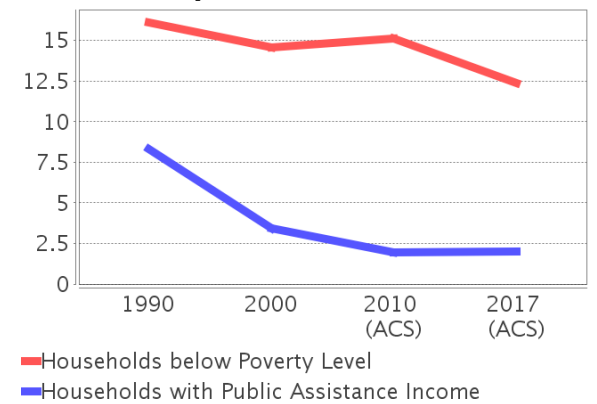
Income Trends - Escambia

Description	1990	2000	2010 (ACS)	2017 (ACS)
Median Household Income	\$25,158	\$35,234	\$43,573	\$47,361
Median Family Income	\$29,490	\$41,708	\$53,495	\$59,598
Population below Poverty Level	17.02%	15.44%	16.40%	14.58%
Households below Poverty Level	16.08%	14.56%	15.08%	12.39%
Households with Public Assistance Income	8.34%	3.46%	1.94%	2.02%

Income Trends



Poverty and Public Assistance



Disability Trends - Escambia

See the Data Sources section below for an explanation about the differences in disability data among the various years.

Description	1990	2000	2010 (ACS)	2017 (ACS)
Population 16 To 64 Years with a disability	17,476 (9.21%)	36,659 (14.38%)	NA (NA)	NA (NA)
Population 20 To 64 Years with a disability	NA (NA)	NA (NA)	NA (NA)	22,197 (12.80%)

Educational Attainment Trends - Escambia

Age 25 and Over

Description	1990	2000	2010 (ACS)	2017 (ACS)
Less than 9th Grade	13,240 (8.02%)	9,567 (5.04%)	7,306 (3.76%)	5,142 (2.50%)
9th to 12th Grade, No Diploma	26,040 (15.77%)	24,475 (12.90%)	18,445 (9.50%)	14,320 (6.95%)
High School Graduate or Higher	125,814 (76.21%)	155,668 (82.06%)	168,411 (86.74%)	186,542 (90.55%)
Bachelor's Degree or Higher	30,006 (18.18%)	39,789 (20.97%)	45,424 (23.39%)	53,465 (25.95%)

Language Trends - Escambia

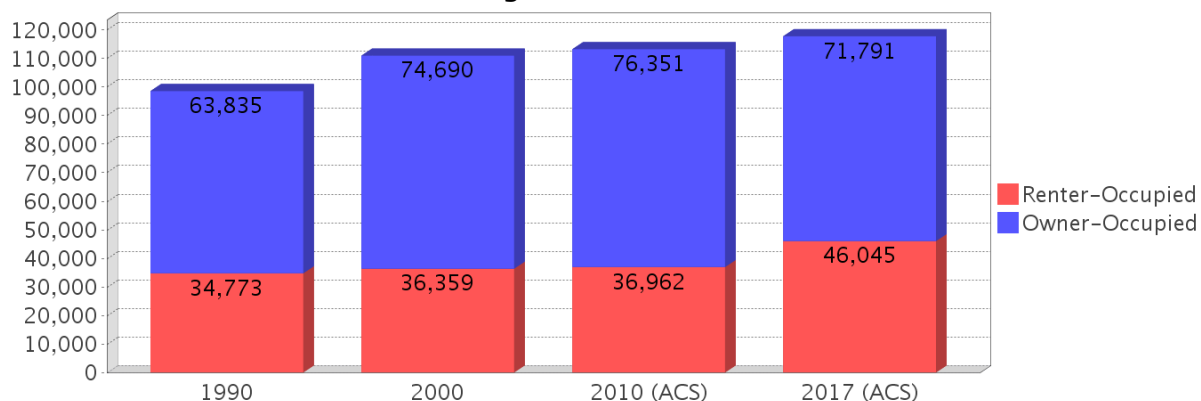
Age 5 and Over

Description	1990	2000	2010 (ACS)	2017 (ACS)
Speaks English Well	2,493 (1.02%)	3,515 (1.27%)	5,056 (1.81%)	4,256 (1.46%)
Speaks English Not Well	NA (NA)	2,214 (0.80%)	2,571 (0.92%)	1,969 (0.68%)
Speaks English Not at All	NA (NA)	379 (0.14%)	781 (0.28%)	736 (0.25%)
Speaks English Not Well or Not at All	1,571 (0.65%)	2,593 (0.94%)	3,352 (1.20%)	2,705 (0.93%)

Housing Trends - Escambia

Description	1990	2000	2010 (ACS)	2017 (ACS)
Total	112,230	124,647	136,151	139,751
Units per Acre	0.262	0.29	0.317	0.326
Single-Family Units	70,560	87,133	94,640	97,714
Multi-Family Units	18,301	25,401	30,795	31,908
Mobile Home Units	8,982	11,935	10,458	10,043
Owner-Occupied Units	63,835	74,690	76,351	71,791
Renter-Occupied Units	34,773	36,359	36,962	46,045
Vacant Units	13,622	13,598	22,838	21,915
Median Housing Value	\$57,100	\$81,700	\$148,600	\$126,700
Occupied Housing Units w/No Vehicle	9,199 (9.33%)	9,285 (8.36%)	8,841 (7.80%)	7,041 (5.98%)

Housing Tenure - Escambia



County Data Sources

Demographic data reported is from the U.S. Decennial Census (1990, 2000) and the American Community Survey (ACS) 5-year estimates from 2006-2010 and 2013-2017. The data was gathered at the county level. Depending on the dataset, the data represents 100% counts (Census Summary File 1) or sample-based information (Census Summary File 3 or ACS).

About the Census Data:

Use caution when comparing the 100% count data (Decennial Census) to the sample-based data (ACS). In any given year, about one in 40 or 2.5% of U.S. households will receive the ACS questionnaire. Over any five-year period, about one in eight households will receive the questionnaire, as compared to about one in six that received the long form questionnaire for the Decennial Census 2000. (Source: <http://mcdc.missouri.edu/pub/data/acs/Readme.shtml>) The U.S. Census Bureau provides help with this process:

<https://www.census.gov/programs-surveys/acs/guidance/comparing-acs-data/2017.html>

Use caution when interpreting changes in Race and Ethnicity over time. Starting with the 2000 Decennial Census, respondents were given a new option of selecting one or more race categories. Also in 2000, the placement of the question about Hispanic origin changed, helping to increase responsiveness to the Hispanic-origin question. Because of these and other changes, the 1990 data on race and ethnicity are not directly comparable with data from later censuses. (Source: <http://www.census.gov/prod/2001pubs/c2kbr01-1.pdf>; <http://www.census.gov/pred/www/rpts/Race%20and%20Ethnicity%20FINAL%20report.pdf>)

The "Minority" calculations are derived from Census and ACS data using both the race and ethnicity responses. On this report, "Minority" refers to individuals who list a race other than White and/or list their ethnicity as Hispanic/Latino. In other words, people who are multi-racial, any single race other than White, or Hispanic/Latino of any race are considered minorities.

Disability data is not included in the 2010 Decennial Census, or the 2006-2010 ACS. This data is available in the 2013-2017 ACS.

Because of changes made to the Census and ACS questions between 1990 and 2017, disability variables should not be compared from year to year. For example: 1) With the 1990 data the disabilities are listed as a "work disability" while this distinction is not made with 2000 or 2017 ACS data; 2) The 2017 ACS data includes the institutionalized population (e.g. persons in prisons and group homes), while this population is not included in 1990 or 2000; 3) the age groupings changed over the years.

Please take the following two concerns into account when viewing this data: 1) With the 1990 data the disabilities are listed as a "work disability" while this distinction is not made with 2000 or 2017 ACS data; 2) The 2017 ACS data includes the institutionalized population (e.g. persons in prisons and group homes), while this population is not included in 1990 or 2000.

source:

<https://www.census.gov/people/disability/methodology/acs.html>

<https://www.census.gov/population/www/cen2000/90vs00/index.html>

The category Bachelor's Degree or Higher under the heading Educational Attainment Trends is a subset of the category High School Graduate or Higher.

Metadata

- Community and Fraternal Centers https://etdmpub.florida-estat.org/metadata/gc_communitycenter.htm
- Correctional Facilities in Florida https://etdmpub.florida-estat.org/metadata/gc_correctional.htm
- Cultural Centers in Florida https://etdmpub.florida-estat.org/metadata/gc_culturecenter.htm
- Fire Department and Rescue Station Facilities in Florida https://etdmpub.florida-estat.org/metadata/gc_firestat.htm
- Local, State, and Federal Government Buildings in Florida https://etdmpub.florida-estat.org/metadata/gc_govbuild.htm
- Florida Health Care Facilities https://etdmpub.florida-estat.org/metadata/gc_health.htm
- Hospital Facilities in Florida https://etdmpub.florida-estat.org/metadata/gc_hospitals.htm
- Law Enforcement Facilities in Florida https://etdmpub.florida-estat.org/metadata/gc_lawenforce.htm
- Florida Parks and Recreational Facilities https://etdmpub.florida-estat.org/metadata/gc_parks.htm
- Religious Centers https://etdmpub.florida-estat.org/metadata/gc_religion.htm
- Florida Public and Private Schools https://etdmpub.florida-estat.org/metadata/gc_schools.htm
- Social Service Centers https://etdmpub.florida-estat.org/metadata/gc_socialservice.htm
- Assisted Rental Housing Units in Florida https://etdmpub.florida-estat.org/metadata/gc_assisted_housing.htm
- Group Care Facilities <https://etdmpub.florida-estat.org/metadata/groupcare.htm>
- Mobile Home Parks in Florida https://etdmpub.florida-estat.org/metadata/gc_mobilehomes.htm
- Migrant Camps in Florida <https://etdmpub.florida-estat.org/metadata/migrant.htm>
- Veteran Organizations and Facilities https://etdmpub.florida-estat.org/metadata/gc_veterans.htm
- Generalized Land Use - Florida DOT District 3 https://etdmpub.florida-estat.org/metadata/d3_lu_gen.htm
- Census Block Groups in Florida https://etdmpub.florida-estat.org/metadata/e2_cenacs_cci.htm
- 1990 Census Block Groups in Florida https://etdmpub.florida-estat.org/metadata/e2_cenblkgrp_1990_cci.htm
- 2000 Census Block Groups in Florida https://etdmpub.florida-estat.org/metadata/e2_cenblkgrp_2000_cci.htm
- 2010 Census Block Groups in Florida https://etdmpub.florida-estat.org/metadata/e2_cenblkgrp_2010_cci.htm