

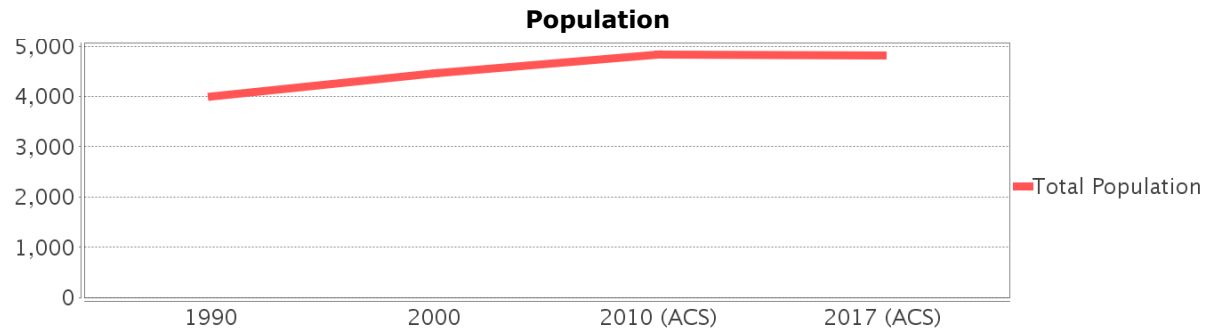
Sociocultural Data Report

Nassau Village-Ratliff

Area: 14.645 square miles
Jurisdiction(s): **Cities:** Jacksonville
Counties: Nassau, Duval

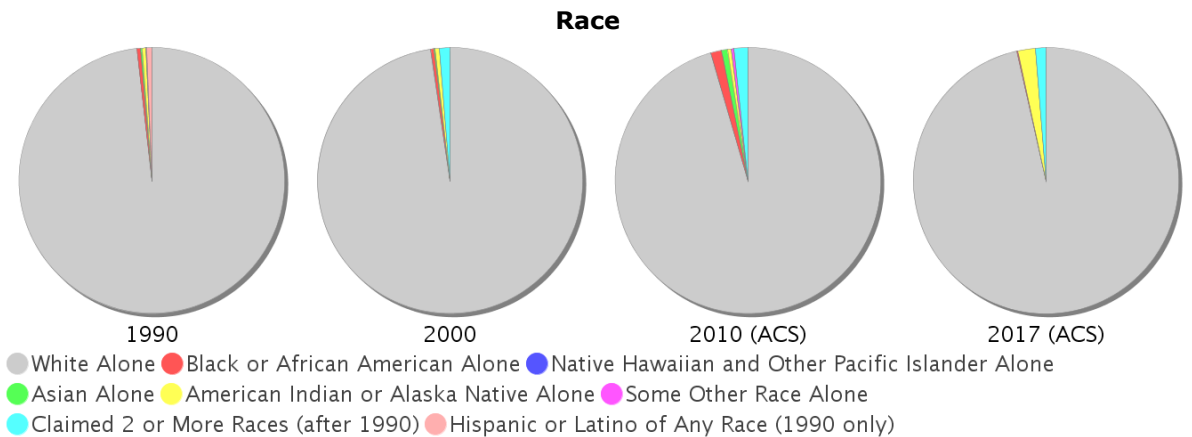
General Population Trends

Description	1990	2000	2010 (ACS)	2017 (ACS)
Total Population	3,996	4,466	4,831	4,820
Total Households	1,379	1,583	1,728	1,697
Average Persons per Acre	0.20	0.23	0.35	0.38
Average Persons per Household	2.96	2.82	3.00	2.92
Average Persons per Family	3.23	3.17	3.00	3.38
Males	1,972	2,197	2,462	2,389
Females	2,024	2,269	2,369	2,431

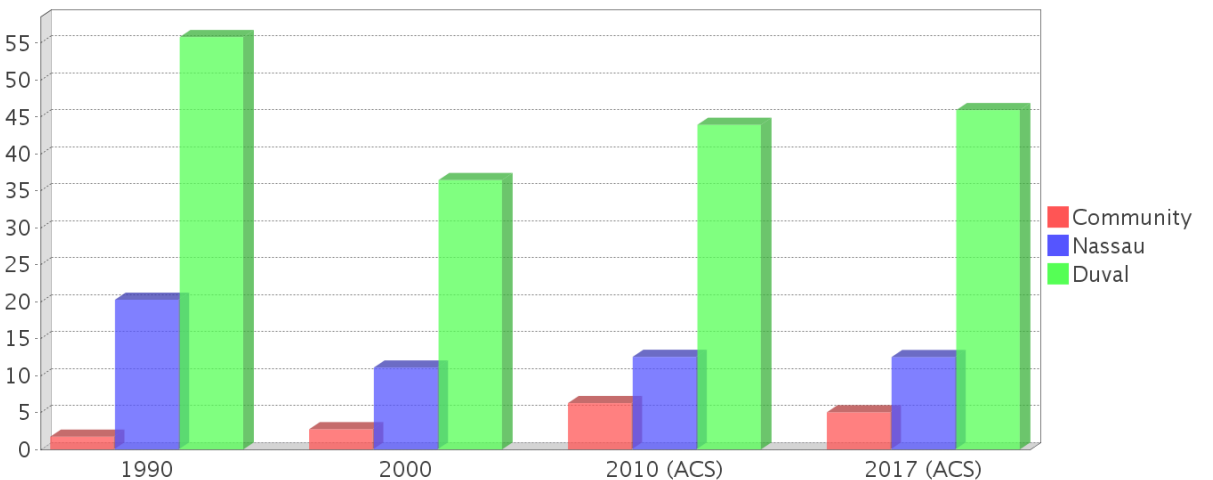


Race and Ethnicity Trends

Description	1990	2000	2010 (ACS)	2017 (ACS)
White Alone	3,949 (98.82%)	4,363 (97.69%)	4,613 (95.49%)	4,649 (96.45%)
Black or African American Alone	20 (0.50%)	16 (0.36%)	64 (1.32%)	8 (0.17%)
Native Hawaiian and Other Pacific Islander Alone	0 (0.00%)	0 (0.00%)	0 (0.00%)	0 (0.00%)
Asian Alone	6 (0.15%)	7 (0.16%)	33 (0.68%)	0 (0.00%)
American Indian or Alaska Native Alone	20 (0.50%)	23 (0.52%)	25 (0.52%)	101 (2.10%)
Some Other Race Alone	2 (0.05%)	0 (0.00%)	15 (0.31%)	0 (0.00%)
Claimed 2 or More Races	NA (NA)	57 (1.28%)	81 (1.68%)	62 (1.29%)
Hispanic or Latino of Any Race	26 (0.65%)	19 (0.43%)	116 (2.40%)	71 (1.47%)
Not Hispanic or Latino	3,970 (99.35%)	4,447 (99.57%)	4,715 (97.60%)	4,749 (98.53%)
Minority	69 (1.73%)	122 (2.73%)	303 (6.27%)	242 (5.02%)



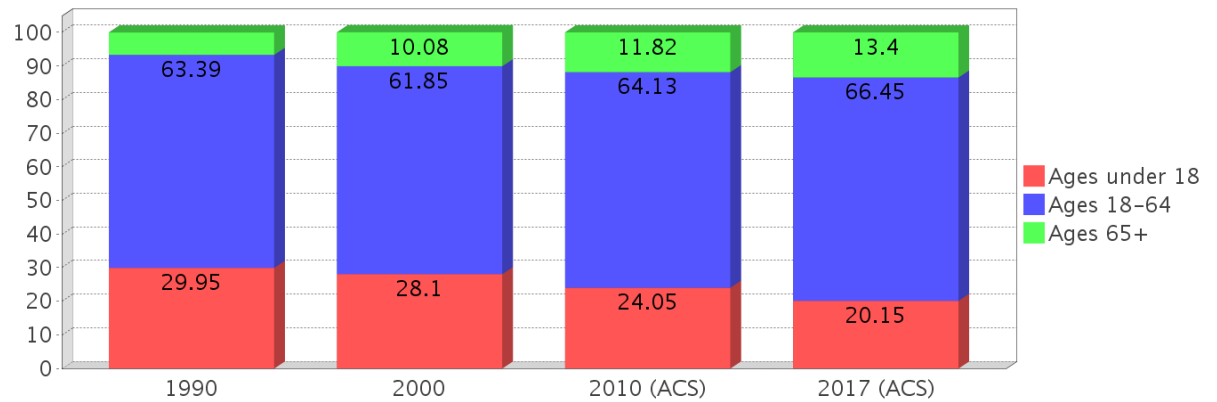
Minority Percentage Population



Age Trends

Description	1990	2000	2010 (ACS)	2017 (ACS)
Under Age 5	8.01%	6.56%	5.51%	5.64%
Ages 5-17	21.95%	21.54%	18.55%	14.50%
Ages 18-21	4.98%	5.26%	5.73%	7.07%
Ages 22-29	12.34%	8.22%	8.80%	8.26%
Ages 30-39	17.99%	14.80%	11.84%	12.80%
Ages 40-49	14.09%	18.47%	16.85%	12.05%
Ages 50-64	13.99%	15.09%	20.91%	26.27%
Age 65 and Over	6.61%	10.08%	11.82%	13.40%
-Ages 65-74	4.88%	7.52%	7.58%	9.59%
-Ages 75-84	1.25%	1.97%	3.48%	3.30%
-Age 85 and Over	0.50%	0.58%	0.77%	0.52%
Median Age	NA	36	38	39

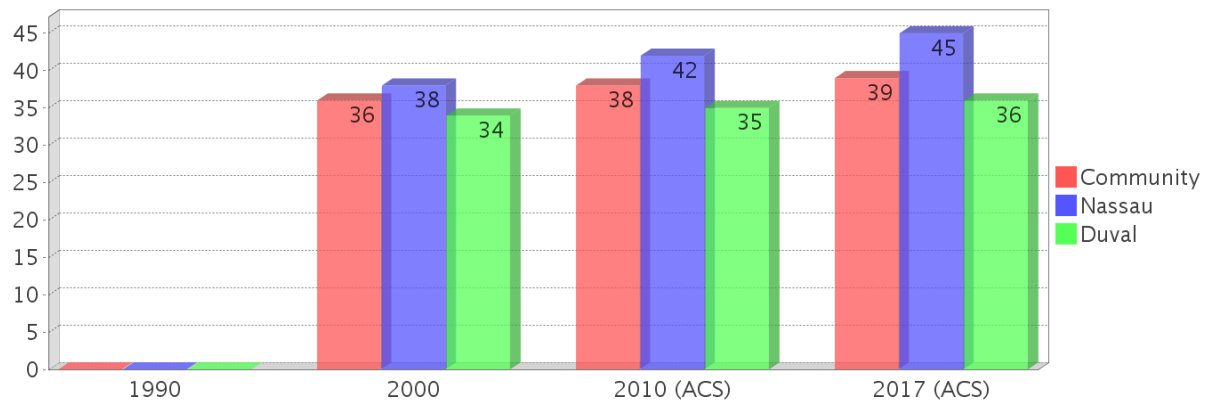
Percentage Population by Age Group



Income Trends

Description	1990	2000	2010 (ACS)	2017 (ACS)
Median Household Income	\$30,678	\$45,824	\$59,298	\$66,090
Median Family Income	\$34,951	\$47,063	\$70,516	\$68,556
Population below Poverty Level	7.13%	6.87%	4.16%	9.75%
Households below Poverty Level	8.19%	7.77%	5.38%	9.96%
Households with Public Assistance Income	5.87%	1.71%	1.27%	2.12%

Median Age Comparison

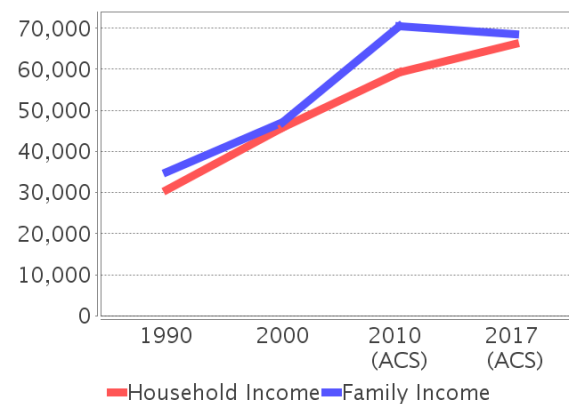


Disability Trends

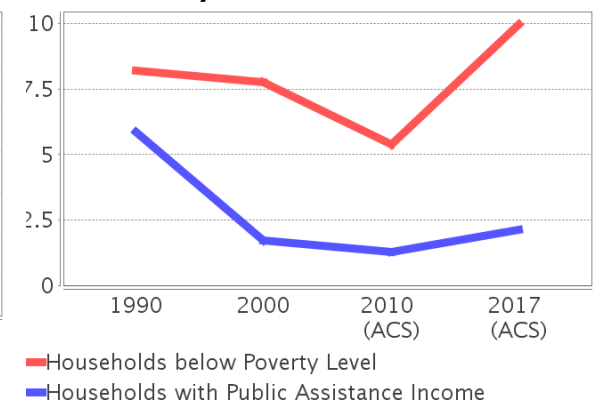
See the Data Sources section below for an explanation about the differences in disability data among the various years.

Description	1990	2000	2010 (ACS)	2017 (ACS)
Population 16 To 64 Years with a disability	343 (11.70%)	711 (17.04%)	(NA)	(NA)
Population 20 To 64 Years with a disability	(NA)	(NA)	(NA)	405 (13.21%)

Income Trends



Poverty and Public Assistance



Educational Attainment Trends

Age 25 and Over

Description	1990	2000	2010 (ACS)	2017 (ACS)
Less than 9th Grade	211 (8.59%)	155 (5.46%)	170 (4.78%)	28 (0.83%)
9th to 12th Grade, No Diploma	502 (20.43%)	576 (20.30%)	697 (19.62%)	307 (9.07%)
High School Graduate or Higher	1,744 (70.98%)	2,107 (74.24%)	2,685 (75.57%)	3,050 (90.10%)
Bachelor's Degree or Higher	75 (3.05%)	189 (6.66%)	329 (9.26%)	469 (13.86%)

Language Trends

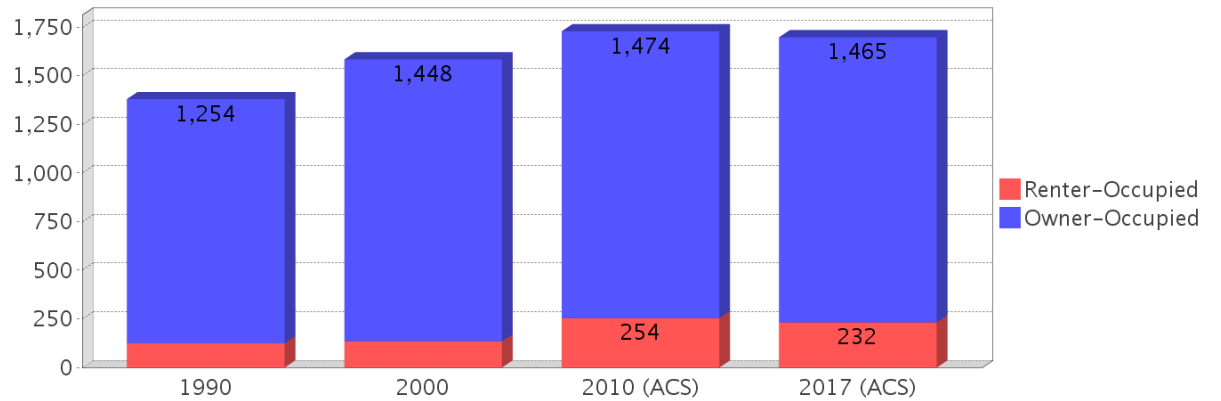
Age 5 and Over

Description	1990	2000	2010 (ACS)	2017 (ACS)
Speaks English Well	0 (0.00%)	0 (0.00%)	33 (0.66%)	15 (0.33%)
Speaks English Not Well	NA (NA)	0 (0.00%)	0 (0.00%)	0 (0.00%)
Speaks English Not at All	NA (NA)	0 (0.00%)	0 (0.00%)	0 (0.00%)
Speaks English Not Well or Not at All	8 (0.22%)	0 (0.00%)	0 (0.00%)	0 (0.00%)

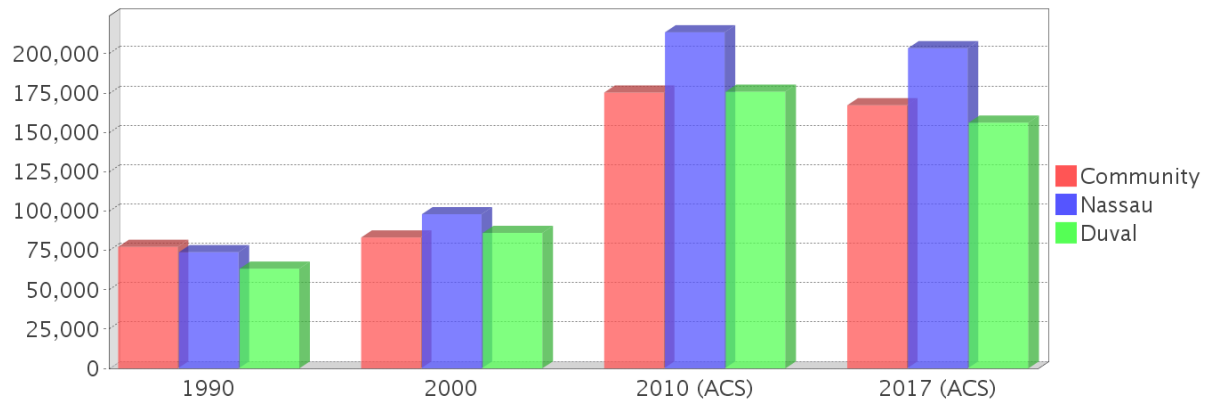
Housing Trends

Description	1990	2000	2010 (ACS)	2017 (ACS)
Total	1,421	1,647	1,841	1,816
Units per Acre	0.16	0.19	0.20	0.20
Single-Family Units	526	838	949	922
Multi-Family Units	2	9	0	0
Mobile Home Units	848	800	1,019	885
Owner-Occupied Units	1,254	1,448	1,474	1,465
Renter-Occupied Units	125	135	254	232
Vacant Units	43	64	113	119
Median Housing Value	\$77,300	\$83,200	\$175,300	\$167,200
Occupied Housing Units w/No Vehicle	102 (7.40%)	34 (2.15%)	33 (1.91%)	9 (0.53%)

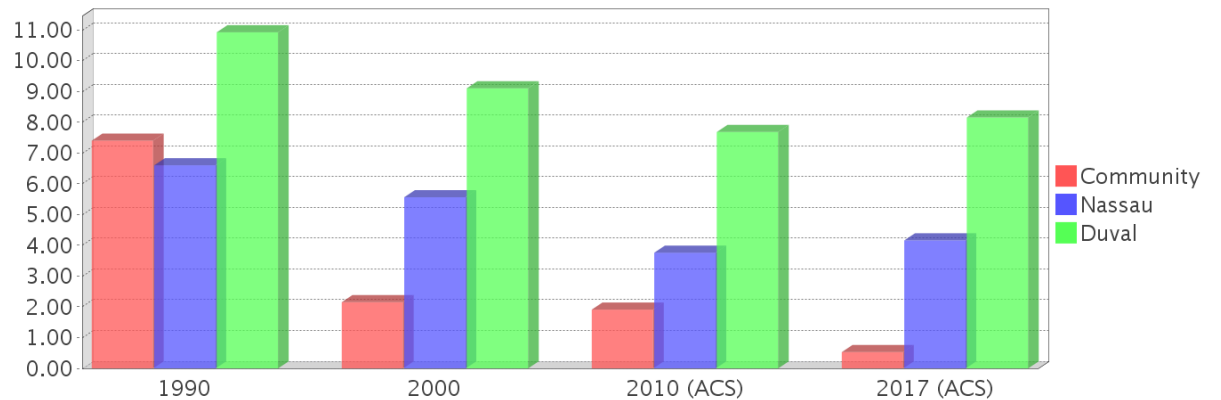
Housing Tenure



Median Housing Value Comparison

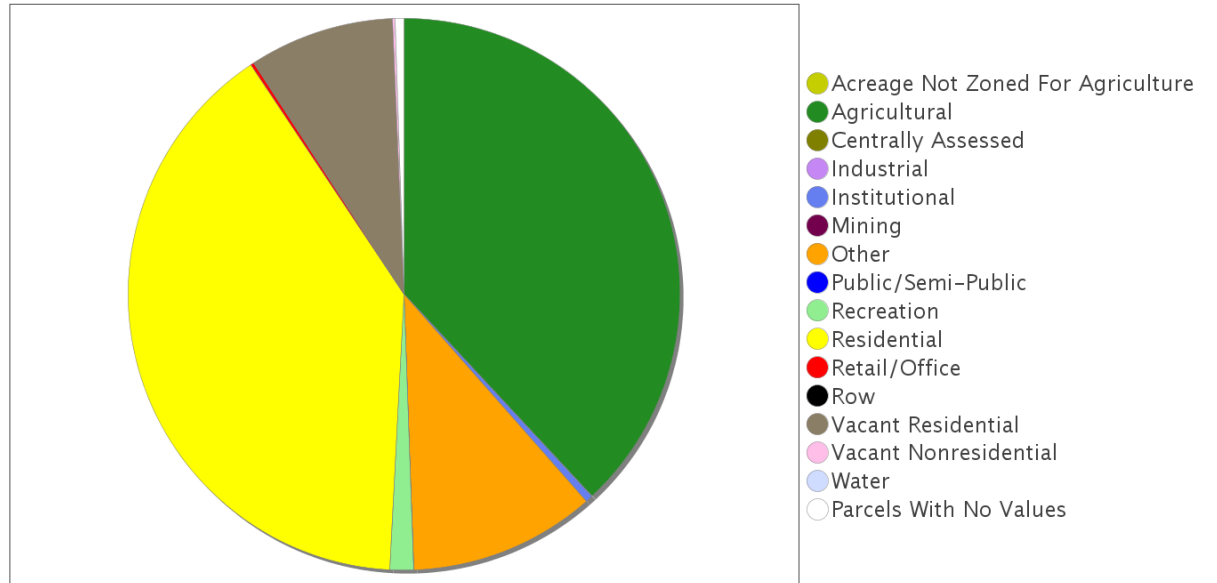


Occupied Units With No Vehicles Available

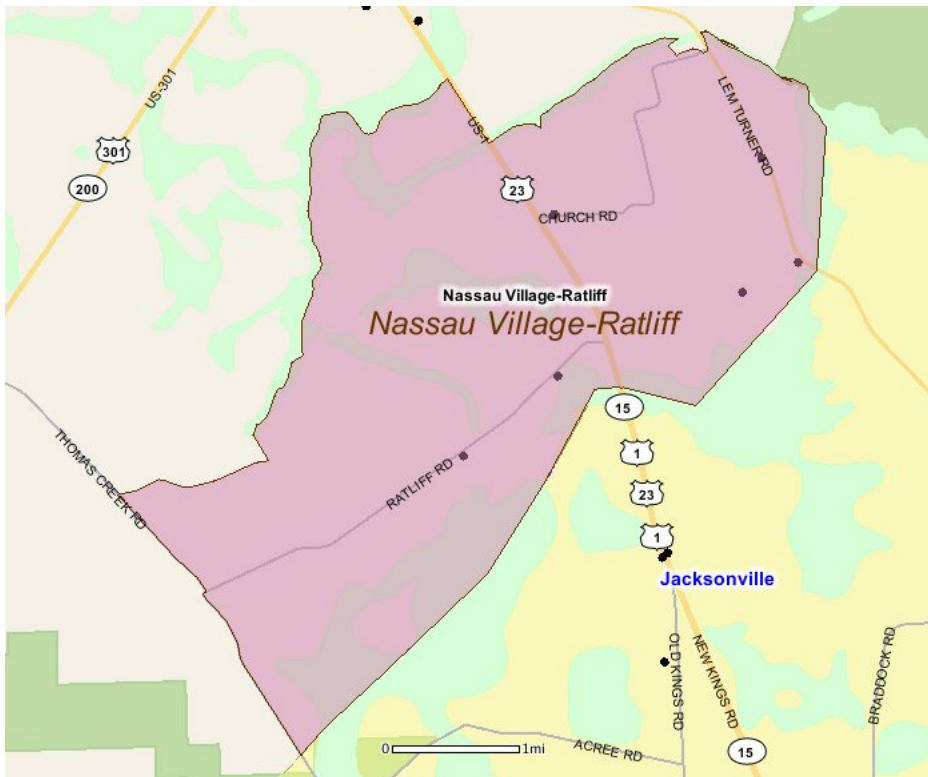


Existing Land Use

Land Use Type	Acres	Percentage
Acreage Not Zoned For Agriculture	0	0.00%
Agricultural	3,417	36.46%
Centrally Assessed	0	0.00%
Industrial	3	0.03%
Institutional	37	0.39%
Mining	0	0.00%
Other	982	10.48%
Public/Semi-Public	1	0.01%
Recreation	124	1.32%
Residential	3,572	38.11%
Retail/Office	18	0.19%
Row	<0.5	<0.01%
Vacant Residential	764	8.15%
Vacant Nonresidential	12	0.13%
Water	0	0.00%
Parcels With No Values	48	0.51%



Location Maps



Community Facilities

The community facilities information below is useful in a variety of ways for environmental evaluations. These community resources should be evaluated for potential sociocultural effects, such as accessibility and relocation potential. The facility types may indicate the types of population groups present in the project study area. Facility staff and leaders can be sources of community information such as who uses the facility and how it is used. Additionally, community facilities are potential public meeting venues.

Fire Stations (Points)

Facility Name	Address	Zip Code
RATLIFF VOLUNTEER FIRE DEPARTMENT STATION 10	43488 RATLIFF RD	32011
GRAY GABLES NASSAU VILLAGE VOLUNTEER FIRE DEPARTMENT STATION 8	540507 LEM TURNER RD	32011

Florida Parks and Recreational Facilities (Points)

Facility Name	Address	Zip Code
LINDA HALL PARK	ARMSTRONG RD	32011

Religious Centers (Points)

Facility Name	Address	Zip Code
LIGHTHOUSE PRAYER CENTER	43694 RATLIFF ROAD	32011
GRAY GABLES FIRST BAPTIST CHURCH	54031 CHURCH ROAD	32011
THOMAS CREEK BAPTIST CHURCH	LEM TURNER & JANICE	32011

US Census Places

Facility Name
Jacksonville
Nassau Village-Ratliff

Block Groups

The following Census Block Groups were used to calculate demographics for this report.

1990 Census Block Groups

120890505005, 120310106009, 120310105009, 120890505003, 120310103019, 120890505001, 120890505002, 120890505007

2000 Census Block Groups

120310106009, 120310105009, 120890505017, 120890505015, 120310103019, 120890505022, 120890505021, 120890505023

2010 Census Block Groups

120890505024, 120890505033, 120890505041, 120890505022, 120310103011, 120890505023, 120310105001, 120890505021

2017 Census Block Groups

120890505021, 120890505024, 120310105001, 120890505023, 120310103011, 120890505041, 120890505033, 120890505022

Data Sources

Area

The geographic area of the community based on a user-specified community boundary or area of interest (AOI) boundary.

Jurisdiction

Jurisdiction(s) includes local government boundaries that intersect the community or AOI boundary.

Demographic Data

Demographic data reported under the headings General Population Trends, Race and Ethnicity Trends, Age Trends, Income Trends, Educational Attainment Trends, Language Trends, and Housing Trends is from the U.S. Decennial Census (1990, 2000) and the American Community Survey (ACS) 5-year estimates from 2006-2010 and 2013-2017. The data was gathered at the block group level for user-specified community boundaries and AOIs, and at the county level for counties. Depending on the dataset, the data represents 100% counts (Census Summary File 1) or sample-based information (Census Summary File 3 or ACS).

About the Census Data:

User-specified community boundaries and AOIs do not always correspond precisely to block group boundaries. In these instances, adjustment of the geographic area and data for affected block groups is required to estimate the actual population. To improve the accuracy of such estimates in the SDR report, the census block group data was adjusted to exclude all census blocks with a population of two or fewer. These areas were eliminated from the corresponding years' block groups. Next, the portion of the block group that lies outside of the community or AOI boundary was removed. The demographics within each block group were then recalculated, assuming an equal area distribution of the population. Note that there may be areas where there is no population.

Use caution when comparing the 100% count data (Decennial Census) to the sample-based data (ACS). In any given year, about one in 40 or 2.5% of U.S. households will receive the ACS questionnaire. Over any five-year period, about

one in eight households will receive the questionnaire, as compared to about one in six that received the long form questionnaire for the Decennial Census 2000. (Source: <http://mcdc.missouri.edu/pub/data/acs/Readme.shtml>) The U.S. Census Bureau provides help with this process:

<https://www.census.gov/programs-surveys/acs/guidance/comparing-acs-data/2017.html>

Use caution when interpreting changes in Race and Ethnicity over time. Starting with the 2000 Decennial Census, respondents were given a new option of selecting one or more race categories. Also in 2000, the placement of the question about Hispanic origin changed, helping to increase responsiveness to the Hispanic-origin question. Because of these and other changes, the 1990 data on race and ethnicity are not directly comparable with data from later censuses. (Source: <http://www.census.gov/prod/2001pubs/c2kbr01-1.pdf>; <http://www.census.gov/pred/www/rpts/Race%20and%20Ethnicity%20FINAL%20report.pdf>)

The "Minority" calculations are derived from Census and ACS data using both the race and ethnicity responses. On this report, "Minority" refers to individuals who list a race other than White and/or list their ethnicity as Hispanic/Latino. In other words, people who are multi-racial, any single race other than White, or Hispanic/Latino of any race are considered minorities.

Disability data is not included in the 2010 Decennial Census, or the 2006-2010 ACS. This data is available in the 2013-2017 ACS.

Because of changes made to the Census and ACS questions between 1990 and 2017, disability variables should not be compared from year to year. For example: 1) With the 1990 data the disabilities are listed as a "work disability" while this distinction is not made with 2000 or 2017 ACS data; 2) The 2017 ACS data includes the institutionalized population (e.g. persons in prisons and group homes), while this population is not included in 1990 or 2000; 3) the age groupings changed over the years.

Please take the following two concerns into account when viewing this data: 1) With the 1990 data the disabilities are listed as a "work disability" while this distinction is not made with 2000 or 2017 ACS data; 2) The 2017 ACS data includes the institutionalized population (e.g. persons in prisons and group homes), while this population is not included in 1990 or 2000.

The category Bachelor's Degree or Higher under the heading Educational Attainment Trends is a subset of the category High School Graduate or Higher.

Income of households. This includes the income of the householder and all other individuals 15 years old and over in the household, whether they are related to the householder or not. Because many households consist of only one person, average household income is usually less than average family income.

Income of families. In compiling statistics on family income, the incomes of all members 15 years old and over related to the householder are summed and treated as a single amount.

Age Trends median age for 1990 is not available.

Land Use Data

The Land Use information Indicates acreages and percentages for the generalized land use types used to group parcel-specific, existing land use assigned by the county property appraiser office according to the Florida Department of Revenue land use codes.

Community Facilities Data

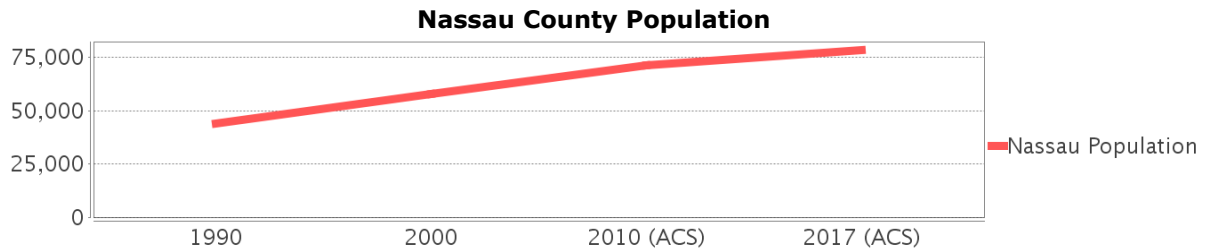
- Assisted Rental Housing Units - Identifies multifamily rental developments that receive funding assistance under federal, state, and local government programs to offer affordable housing as reported by the Shimberg Center for Housing Studies, University of Florida.

- Mobile Home Parks - Identifies approved or acknowledged mobile home parks reported by the Florida Department of Business and Professional Regulation and Florida Department of Health.
- Migrant Camps - Identifies migrant labor camp facilities inspected by the Florida Department of Health.
- Group Care Facilities - Identifies group care facilities inspected by the Florida Department of Health.
- Community Center and Fraternal Association Facilities - Identifies facilities reported by multiple sources.
- Law Enforcement Correctional Facilities - Identifies facilities reported by multiple sources.
- Cultural Centers - Identifies cultural centers including organizations, buildings, or complexes that promote culture and arts (e.g., aquariums and zoological facilities; arboreta and botanical gardens; dinner theaters; drive-ins; historical places and services; libraries; motion picture theaters; museums and art galleries; performing arts centers; performing arts theaters; planetariums; studios and art galleries; and theater producers stage facilities) reported by multiple sources.
- Fire Department and Rescue Station Facilities - Identifies facilities reported by multiple sources.
- Government Buildings - Identifies local, state, and federal government buildings reported by multiple sources.
- Health Care Facilities - Identifies health care facilities including abortion clinics, dialysis clinics, medical doctors, nursing homes, osteopaths, state laboratories/clinics, and surgicenters/walk-in clinics reported by the Florida Department of Health.
- Hospital Facilities - Identifies hospital facilities reported by multiple sources.
- Law Enforcement Facilities - Identifies law enforcement facilities reported by multiple sources.
- Parks and Recreational Facilities - Identifies parks and recreational facilities reported by multiple sources.
- Religious Center Facilities - Identifies religious centers including churches, temples, synagogues, mosques, chapels, centers, and other types of religious facilities reported by multiple sources.
- Private and Public Schools - Identifies private and public schools reported by multiple sources.
- Social Service Centers - Identifies social service centers reported by multiple sources.
- Veteran Organizations and Facilities

Nassau County Demographic Profile

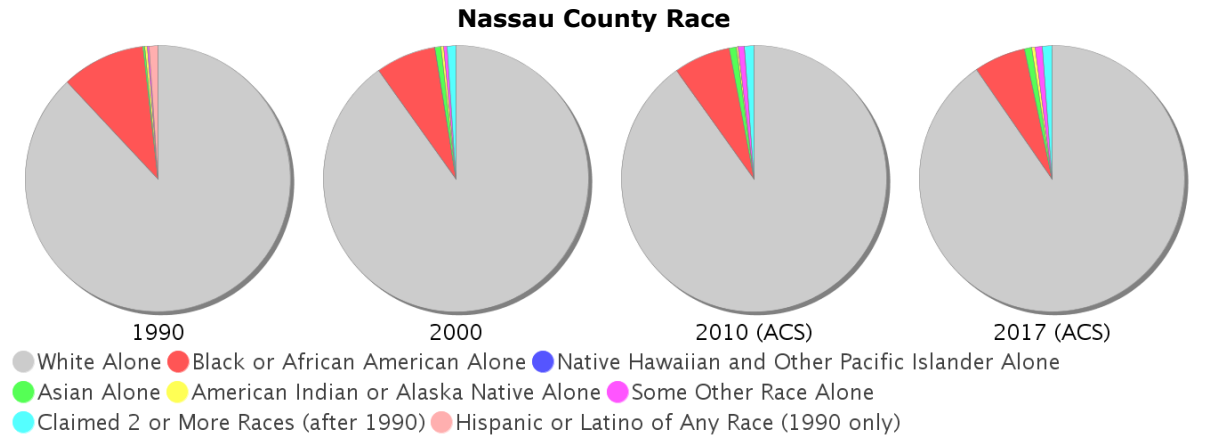
General Population Trends - Nassau

Description	1990	2000	2010 (ACS)	2017 (ACS)
Total Population	43,941	57,663	71,099	78,435
Total Households	16,192	21,980	27,255	30,454
Average Persons per Acre	0.104	0.135	0.167	0.184
Average Persons per Household	2.714	2.595	3.00	2.55
Average Persons per Family	3.181	3.043	3.053	3.055
Males	21,735	28,326	34,932	38,706
Females	22,206	29,337	36,167	39,729



Race and Ethnicity Trends - Nassau

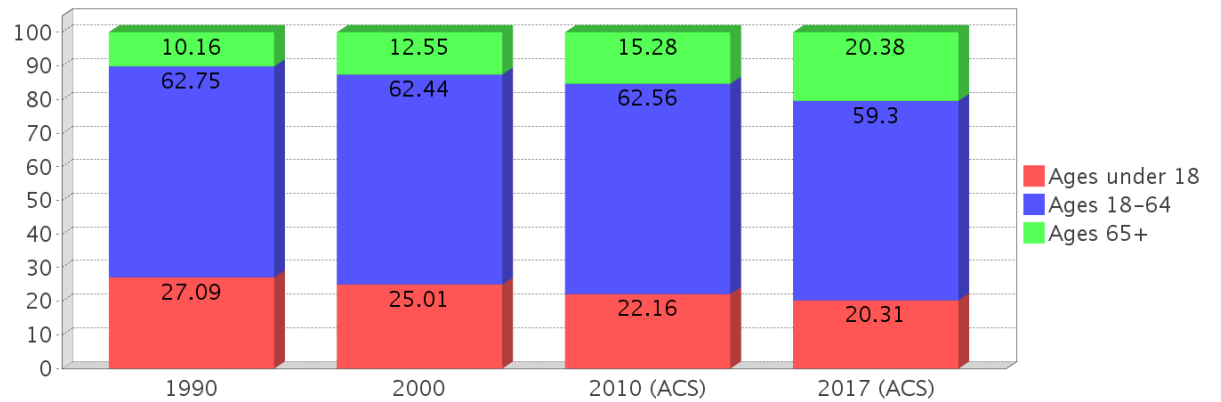
Description	1990	2000	2010 (ACS)	2017 (ACS)
White Alone	39,069 (88.91%)	51,964 (90.12%)	64,034 (90.06%)	70,888 (90.38%)
Black or African American Alone	4,522 (10.29%)	4,240 (7.35%)	4,936 (6.94%)	4,913 (6.26%)
Native Hawaiian and Other Pacific Islander Alone	(NA)	5 (0.01%)	0 (0.00%)	5 (0.01%)
Asian Alone	119 (0.27%)	422 (0.73%)	624 (0.88%)	716 (0.91%)
American Indian or Alaska Native Alone	134 (0.30%)	193 (0.33%)	127 (0.18%)	310 (0.40%)
Some Other Race Alone	83 (0.19%)	224 (0.39%)	588 (0.83%)	698 (0.89%)
Claimed 2 or More Races	(NA)	615 (1.07%)	790 (1.11%)	905 (1.15%)
Hispanic or Latino of Any Race	480 (1.09%)	1,047 (1.82%)	2,188 (3.08%)	2,979 (3.80%)
Not Hispanic or Latino	43,461 (98.91%)	56,616 (98.18%)	68,911 (96.92%)	75,456 (96.20%)
Minority	8,904 (20.26%)	6,387 (11.08%)	8,904 (12.52%)	9,804 (12.50%)



Age Trends - Nassau

Description	1990	2000	2010 (ACS)	2017 (ACS)
Under Age 5	7.41%	6.10%	5.38%	5.25%
Ages 5-17	19.69%	18.91%	16.78%	15.06%
Ages 18-21	5.56%	4.43%	4.79%	4.21%
Ages 22-29	11.51%	8.58%	8.20%	8.36%
Ages 30-39	16.90%	14.92%	11.45%	10.92%
Ages 40-49	14.09%	16.06%	15.48%	12.85%
Ages 50-64	14.69%	18.45%	22.65%	22.96%
Age 65 and Over	10.16%	12.55%	15.28%	20.38%
-Ages 65-74	6.45%	8.06%	9.41%	12.90%
-Ages 75-84	3.04%	3.57%	4.30%	5.60%
-Age 85 and Over	0.66%	0.92%	1.57%	1.88%
Median Age	NA	38	42	45

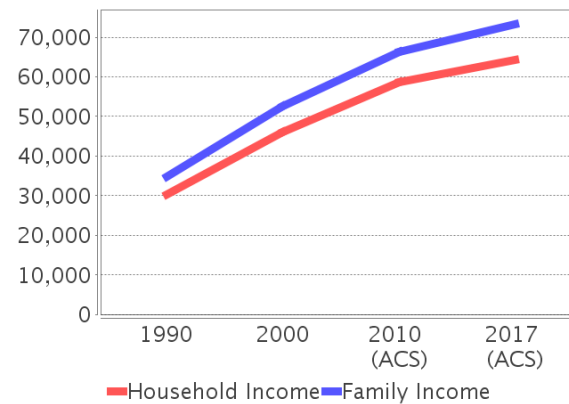
Percentage Population by Age Group - Nassau



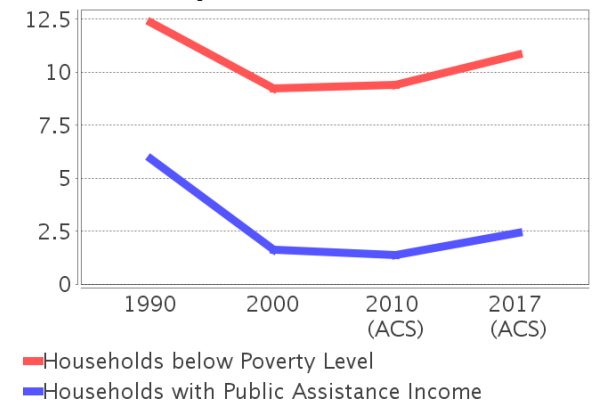
Income Trends - Nassau

Description	1990	2000	2010 (ACS)	2017 (ACS)
Median Household Income	\$30,233	\$46,022	\$58,712	\$64,294
Median Family Income	\$34,740	\$52,477	\$66,233	\$73,314
Population below Poverty Level	11.66%	9.15%	9.29%	11.42%
Households below Poverty Level	12.34%	9.22%	9.40%	10.84%
Households with Public Assistance Income	5.92%	1.61%	1.36%	2.45%

Income Trends



Poverty and Public Assistance



Disability Trends - Nassau

See the Data Sources section below for an explanation about the differences in disability data among the various years.

Description	1990	2000	2010 (ACS)	2017 (ACS)
Population 16 To 64 Years with a disability	3,083 (9.41%)	7,299 (13.68%)	NA (NA)	NA (NA)
Population 20 To 64 Years with a disability	NA (NA)	NA (NA)	NA (NA)	5,802 (12.96%)

Educational Attainment Trends - Nassau

Age 25 and Over

Description	1990	2000	2010 (ACS)	2017 (ACS)
Less than 9th Grade	3,027 (10.80%)	2,196 (5.63%)	1,627 (3.27%)	1,818 (3.19%)
9th to 12th Grade, No Diploma	5,051 (18.02%)	5,202 (13.35%)	5,106 (10.25%)	3,105 (5.46%)
High School Graduate or Higher	19,953 (71.18%)	31,574 (81.02%)	43,081 (86.48%)	51,991 (91.35%)
Bachelor's Degree or Higher	3,492 (12.46%)	7,364 (18.90%)	10,915 (21.91%)	15,459 (27.16%)

Language Trends - Nassau

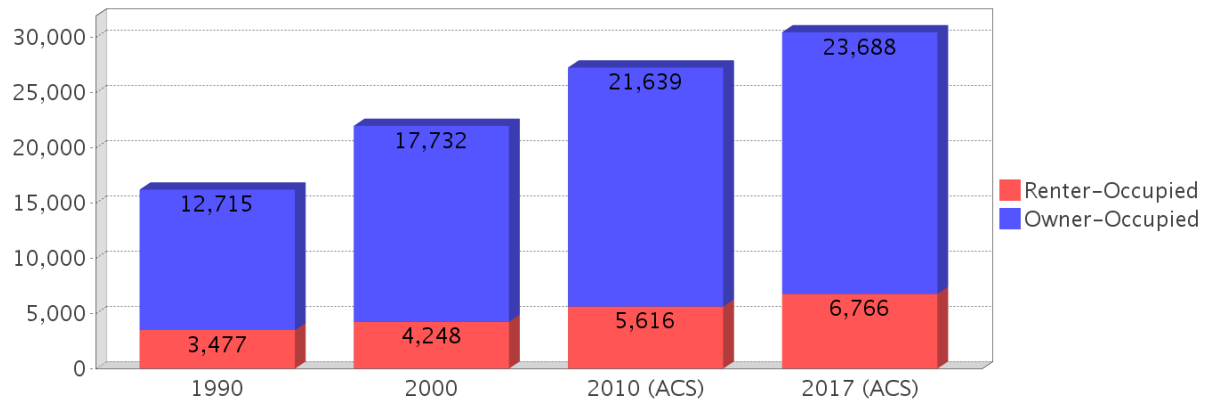
Age 5 and Over

Description	1990	2000	2010 (ACS)	2017 (ACS)
Speaks English Well	214 (0.53%)	299 (0.55%)	266 (0.40%)	690 (0.93%)
Speaks English Not Well	NA (NA)	167 (0.31%)	170 (0.25%)	212 (0.29%)
Speaks English Not at All	NA (NA)	72 (0.13%)	36 (0.05%)	123 (0.17%)
Speaks English Not Well or Not at All	222 (0.55%)	239 (0.44%)	206 (0.31%)	335 (0.45%)

Housing Trends - Nassau

Description	1990	2000	2010 (ACS)	2017 (ACS)
Total	18,726	25,917	34,012	37,177
Units per Acre	0.045	0.061	0.08	0.087
Single-Family Units	8,949	14,857	21,909	24,987
Multi-Family Units	1,733	4,262	4,761	5,310
Mobile Home Units	5,400	6,771	7,271	6,777
Owner-Occupied Units	12,715	17,732	21,639	23,688
Renter-Occupied Units	3,477	4,248	5,616	6,766
Vacant Units	2,534	3,937	6,757	6,723
Median Housing Value	\$73,900	\$98,000	\$213,600	\$203,500
Occupied Housing Units w/No Vehicle	1,069 (6.60%)	1,223 (5.56%)	1,026 (3.76%)	1,268 (4.16%)

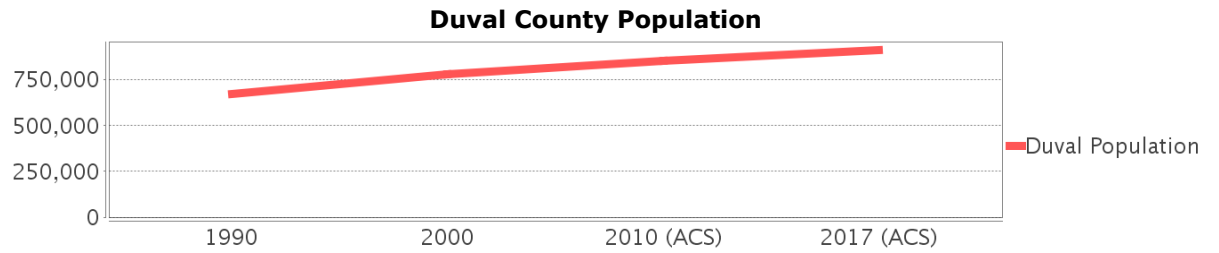
Housing Tenure - Nassau



Duval County Demographic Profile

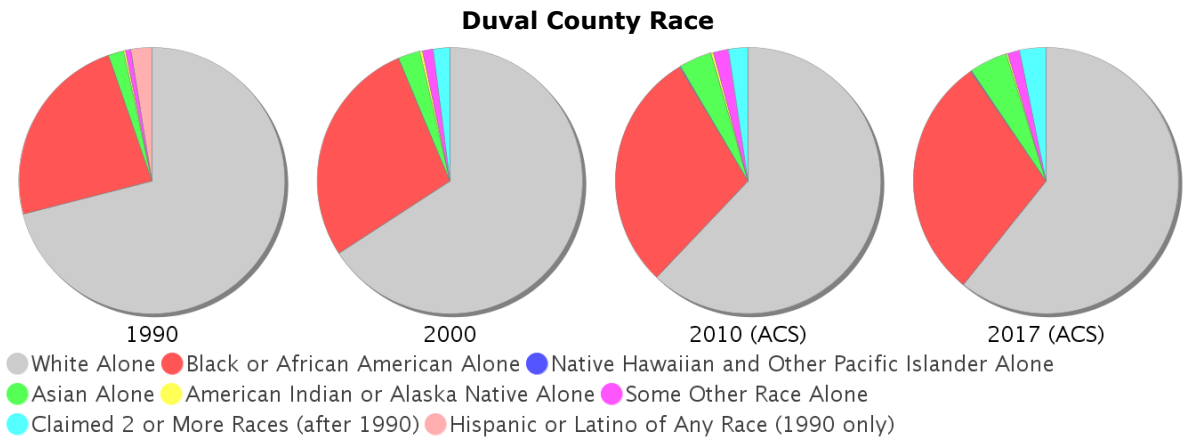
General Population Trends - Duval

Description	1990	2000	2010 (ACS)	2017 (ACS)
Total Population	672,971	778,879	854,848	912,043
Total Households	257,245	303,747	330,276	347,783
Average Persons per Acre	1.246	1.429	1.568	1.674
Average Persons per Household	2.616	2.511	3.00	2.57
Average Persons per Family	3.156	3.138	3.278	3.332
Males	328,737	378,040	414,413	442,115
Females	344,234	400,839	440,435	469,928



Race and Ethnicity Trends - Duval

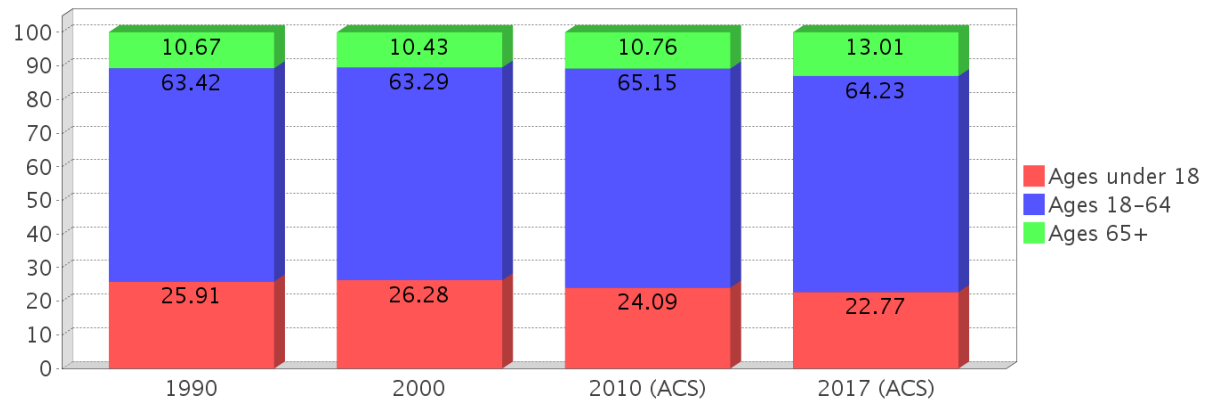
Description	1990	2000	2010 (ACS)	2017 (ACS)
White Alone	489,604 (72.75%)	512,659 (65.82%)	530,593 (62.07%)	553,571 (60.70%)
Black or African American Alone	163,902 (24.35%)	216,517 (27.80%)	250,792 (29.34%)	271,042 (29.72%)
Native Hawaiian and Other Pacific Islander Alone	(NA)	507 (0.07%)	697 (0.08%)	850 (0.09%)
Asian Alone	12,613 (1.87%)	20,554 (2.64%)	34,173 (4.00%)	42,206 (4.63%)
American Indian or Alaska Native Alone	1,904 (0.28%)	2,995 (0.38%)	2,532 (0.30%)	1,956 (0.21%)
Some Other Race Alone	4,621 (0.69%)	9,777 (1.26%)	15,633 (1.83%)	13,002 (1.43%)
Claimed 2 or More Races	(NA)	15,870 (2.04%)	20,428 (2.39%)	29,416 (3.23%)
Hispanic or Latino of Any Race	17,333 (2.58%)	31,809 (4.08%)	60,227 (7.05%)	81,639 (8.95%)
Not Hispanic or Latino	655,638 (97.42%)	747,070 (95.92%)	794,621 (92.95%)	830,404 (91.05%)
Minority	375,437 (55.79%)	283,868 (36.45%)	375,437 (43.92%)	418,735 (45.91%)



Age Trends - Duval

Description	1990	2000	2010 (ACS)	2017 (ACS)
Under Age 5	8.09%	7.15%	6.98%	6.77%
Ages 5-17	17.82%	19.13%	17.11%	16.00%
Ages 18-21	6.26%	5.48%	5.91%	5.05%
Ages 22-29	14.95%	11.64%	12.62%	13.01%
Ages 30-39	17.73%	16.60%	13.80%	14.08%
Ages 40-49	12.33%	15.62%	14.89%	12.66%
Ages 50-64	12.17%	13.95%	17.94%	19.43%
Age 65 and Over	10.67%	10.43%	10.76%	13.01%
-Ages 65-74	6.49%	5.69%	5.80%	7.85%
-Ages 75-84	3.27%	3.62%	3.63%	3.52%
-Age 85 and Over	0.91%	1.11%	1.33%	1.63%
Median Age	NA	34	35	36

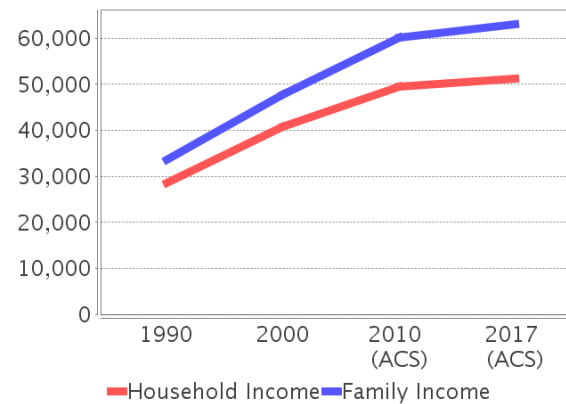
Percentage Population by Age Group - Duval



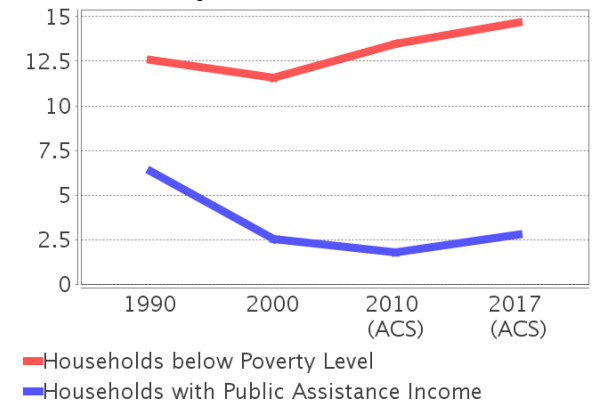
Income Trends - Duval

Description	1990	2000	2010 (ACS)	2017 (ACS)
Median Household Income	\$28,513	\$40,703	\$49,463	\$51,296
Median Family Income	\$33,548	\$47,689	\$60,114	\$63,082
Population below Poverty Level	12.81%	11.91%	14.19%	16.05%
Households below Poverty Level	12.58%	11.57%	13.45%	14.66%
Households with Public Assistance Income	6.32%	2.56%	1.80%	2.80%

Income Trends



Poverty and Public Assistance



Disability Trends - Duval

See the Data Sources section below for an explanation about the differences in disability data among the various years.

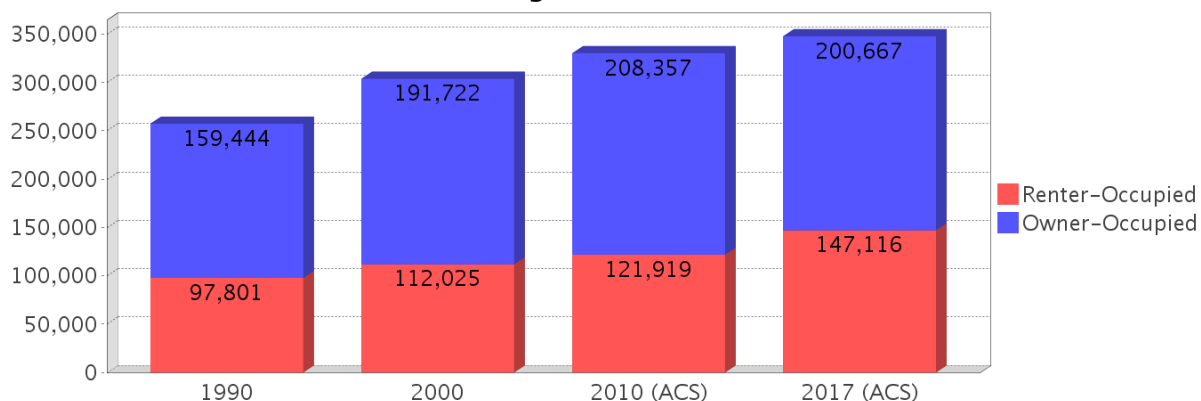
Description	1990	2000	2010 (ACS)	2017 (ACS)
Population 16 To 64 Years with a disability	37,634 (7.78%)	105,681 (15.08%)	NA (NA)	NA (NA)
Population 20 To 64 Years with a disability	NA (NA)	NA (NA)	NA (NA)	64,983 (11.73%)

Educational Attainment Trends - Duval

Age 25 and Over

Description	1990	2000	2010 (ACS)	2017 (ACS)
Less than 9th Grade	30,801 (7.26%)	21,669 (4.34%)	21,096 (3.78%)	19,108 (3.09%)
9th to 12th Grade, No Diploma	67,261 (15.86%)	64,667 (12.94%)	50,443 (9.03%)	46,658 (7.55%)
High School Graduate or Higher	325,978 (76.87%)	413,266 (82.72%)	487,204 (87.20%)	552,022 (89.35%)
Bachelor's Degree or Higher	77,986 (18.39%)	109,473 (21.91%)	139,017 (24.88%)	177,121 (28.67%)

Housing Tenure - Duval



Language Trends - Duval

Age 5 and Over

Description	1990	2000	2010 (ACS)	2017 (ACS)
Speaks English Well	8,207 (1.33%)	14,191 (1.96%)	21,474 (2.70%)	23,630 (2.78%)
Speaks English Not Well	NA	8,478 (1.17%)	13,337 (1.68%)	15,777 (1.86%)
Speaks English Not at All	NA	1,443 (0.20%)	4,591 (0.58%)	5,672 (0.67%)
Speaks English Not Well or Not at All	4,260 (0.69%)	9,921 (1.37%)	17,928 (2.25%)	21,449 (2.52%)

Housing Trends - Duval

Description	1990	2000	2010 (ACS)	2017 (ACS)
Total	284,673	329,778	383,560	399,736
Units per Acre	0.527	0.605	0.703	0.733
Single-Family Units	167,184	215,737	253,643	264,285
Multi-Family Units	68,091	91,304	109,007	116,886
Mobile Home Units	19,729	22,485	20,633	18,406
Owner-Occupied Units	159,444	191,722	208,357	200,667
Renter-Occupied Units	97,801	112,025	121,919	147,116
Vacant Units	27,428	26,031	53,284	51,953
Median Housing Value	\$63,400	\$86,100	\$175,900	\$156,200
Occupied Housing Units w/No Vehicle	28,091 (10.92%)	27,648 (9.10%)	25,351 (7.68%)	28,351 (8.15%)

County Data Sources

Demographic data reported is from the U.S. Decennial Census (1990, 2000) and the American Community Survey (ACS) 5-year estimates from 2006-2010 and 2013-2017. The data was gathered at the county level. Depending on the dataset, the data represents 100% counts (Census Summary File 1) or sample-based information (Census Summary File 3 or ACS).

About the Census Data:

Use caution when comparing the 100% count data (Decennial Census) to the sample-based data (ACS). In any given year, about one in 40 or 2.5% of U.S. households will receive the ACS questionnaire. Over any five-year period, about one in eight households will receive the questionnaire, as compared to about one in six that received the long form questionnaire for the Decennial Census 2000. (Source: <http://mcdc.missouri.edu/pub/data/acs/Readme.shtml>) The U.S. Census Bureau provides help with this process:

<https://www.census.gov/programs-surveys/acs/guidance/comparing-acs-data/2017.html>

Use caution when interpreting changes in Race and Ethnicity over time. Starting with the 2000 Decennial Census, respondents were given a new option of selecting one or more race categories. Also in 2000, the placement of the question about Hispanic origin changed, helping to increase responsiveness to the Hispanic-origin question. Because of these and other changes, the 1990 data on race and ethnicity are not directly comparable with data from later censuses. (Source: <http://www.census.gov/prod/2001pubs/c2kbr01-1.pdf>; <http://www.census.gov/pred/www/rpts/Race%20and%20Ethnicity%20FINAL%20report.pdf>)

The "Minority" calculations are derived from Census and ACS data using both the race and ethnicity responses. On this report, "Minority" refers to individuals who list a race other than White and/or list their ethnicity as Hispanic/Latino. In other words, people who are multi-racial, any single race other than White, or Hispanic/Latino of any race are considered minorities.

Disability data is not included in the 2010 Decennial Census, or the 2006-2010 ACS. This data is available in the 2013-2017 ACS.

Because of changes made to the Census and ACS questions between 1990 and 2017, disability variables should not be compared from year to year. For example: 1) With the 1990 data the disabilities are listed as a "work disability" while this distinction is not made with 2000 or 2017 ACS data; 2) The 2017 ACS data includes the institutionalized population (e.g. persons in prisons and group homes), while this population is not included in 1990 or 2000; 3) the age groupings changed over the years.

Please take the following two concerns into account when viewing this data: 1) With the 1990 data the disabilities are listed as a "work disability" while this distinction is not made with 2000 or 2017 ACS data; 2) The 2017 ACS data includes the institutionalized population (e.g. persons in prisons and group homes), while this population is not included in 1990 or 2000.

source:

<https://www.census.gov/people/disability/methodology/acs.html>

<https://www.census.gov/population/www/cen2000/90vs00/index.html>

The category Bachelor's Degree or Higher under the heading Educational Attainment Trends is a subset of the category High School Graduate or Higher.

Metadata

- Community and Fraternal Centers https://etdmpub.florida-et.org/metadata/gc_communitycenter.htm
- Correctional Facilities in Florida https://etdmpub.florida-et.org/metadata/gc_correctional.htm
- Cultural Centers in Florida https://etdmpub.florida-et.org/metadata/gc_culturecenter.htm
- Fire Department and Rescue Station Facilities in Florida https://etdmpub.florida-et.org/metadata/gc_firestat.htm
- Local, State, and Federal Government Buildings in Florida https://etdmpub.florida-et.org/metadata/gc_govbuild.htm
- Florida Health Care Facilities https://etdmpub.florida-et.org/metadata/gc_health.htm
- Hospital Facilities in Florida https://etdmpub.florida-et.org/metadata/gc_hospitals.htm
- Law Enforcement Facilities in Florida https://etdmpub.florida-et.org/metadata/gc_lawenforce.htm
- Florida Parks and Recreational Facilities https://etdmpub.florida-et.org/metadata/gc_parks.htm
- Religious Centers https://etdmpub.florida-et.org/metadata/gc_religion.htm
- Florida Public and Private Schools https://etdmpub.florida-et.org/metadata/gc_schools.htm
- Social Service Centers https://etdmpub.florida-et.org/metadata/gc_socialservice.htm
- Assisted Rental Housing Units in Florida https://etdmpub.florida-et.org/metadata/gc_assisted_housing.htm
- Group Care Facilities <https://etdmpub.florida-et.org/metadata/groupcare.htm>
- Mobile Home Parks in Florida https://etdmpub.florida-et.org/metadata/gc_mobilehomes.htm
- Migrant Camps in Florida <https://etdmpub.florida-et.org/metadata/migrant.htm>
- Veteran Organizations and Facilities https://etdmpub.florida-et.org/metadata/gc_veterans.htm
- Generalized Land Use - Florida DOT District 2 https://etdmpub.florida-et.org/metadata/d2_lu_gen.htm
- Census Block Groups in Florida https://etdmpub.florida-et.org/metadata/e2_cenacs_cci.htm
- 1990 Census Block Groups in Florida https://etdmpub.florida-et.org/metadata/e2_cenblkgrp_1990_cci.htm
- 2000 Census Block Groups in Florida https://etdmpub.florida-et.org/metadata/e2_cenblkgrp_2000_cci.htm
- 2010 Census Block Groups in Florida https://etdmpub.florida-et.org/metadata/e2_cenblkgrp_2010_cci.htm