

Sociocultural Data Report

Navarre

Area: 29,271 square miles
Jurisdiction(s): Cities: NA
 Counties: Santa Rosa

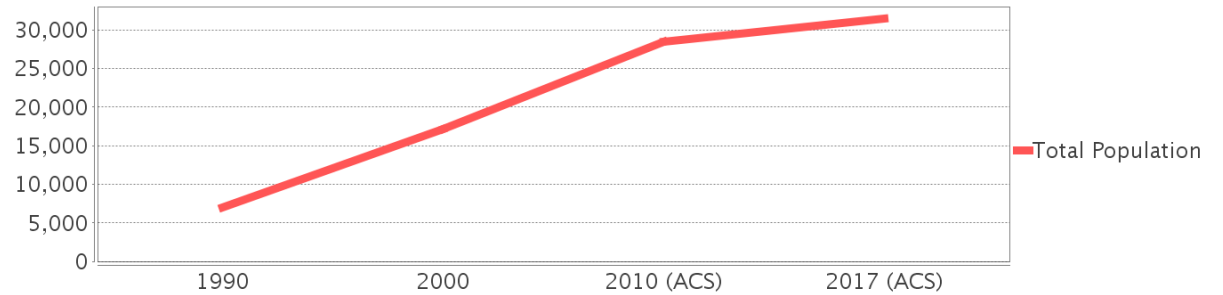
General Population Trends

Description	1990	2000	2010 (ACS)	2017 (ACS)
Total Population	7,008	17,174	28,453	31,462
Total Households	2,654	6,373	10,526	11,654
Average Persons per Acre	0.42	1.61	2.23	2.53
Average Persons per Household	2.62	2.70	2.92	2.72
Average Persons per Family	2.99	3.11	3.00	3.11
Males	3,564	8,748	14,140	15,867
Females	3,444	8,426	14,314	15,595

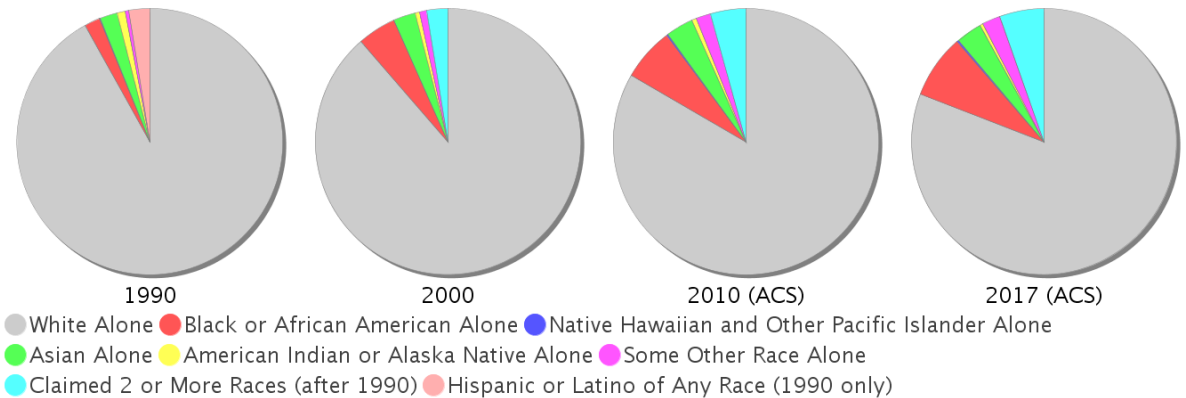
Race and Ethnicity Trends

Description	1990	2000	2010 (ACS)	2017 (ACS)
White Alone	6,610 (94.32%)	15,219 (88.62%)	23,713 (83.34%)	25,429 (80.82%)
Black or African American Alone	136 (1.94%)	810 (4.72%)	1,834 (6.45%)	2,462 (7.83%)
Native Hawaiian and Other Pacific Islander Alone	6 (0.09%)	3 (0.02%)	58 (0.20%)	60 (0.19%)
Asian Alone	150 (2.14%)	453 (2.64%)	951 (3.34%)	996 (3.17%)
American Indian or Alaska Native Alone	74 (1.06%)	92 (0.54%)	156 (0.55%)	121 (0.38%)
Some Other Race Alone	32 (0.46%)	148 (0.86%)	502 (1.76%)	700 (2.22%)
Claimed 2 or More Races	NA (NA)	449 (2.61%)	1,241 (4.36%)	1,694 (5.38%)
Hispanic or Latino of Any Race	183 (2.61%)	701 (4.08%)	1,982 (6.97%)	2,225 (7.07%)
Not Hispanic or Latino	6,825 (97.39%)	16,473 (95.92%)	26,471 (93.03%)	29,237 (92.93%)
Minority	530 (7.56%)	2,453 (14.28%)	5,920 (20.81%)	6,973 (22.16%)

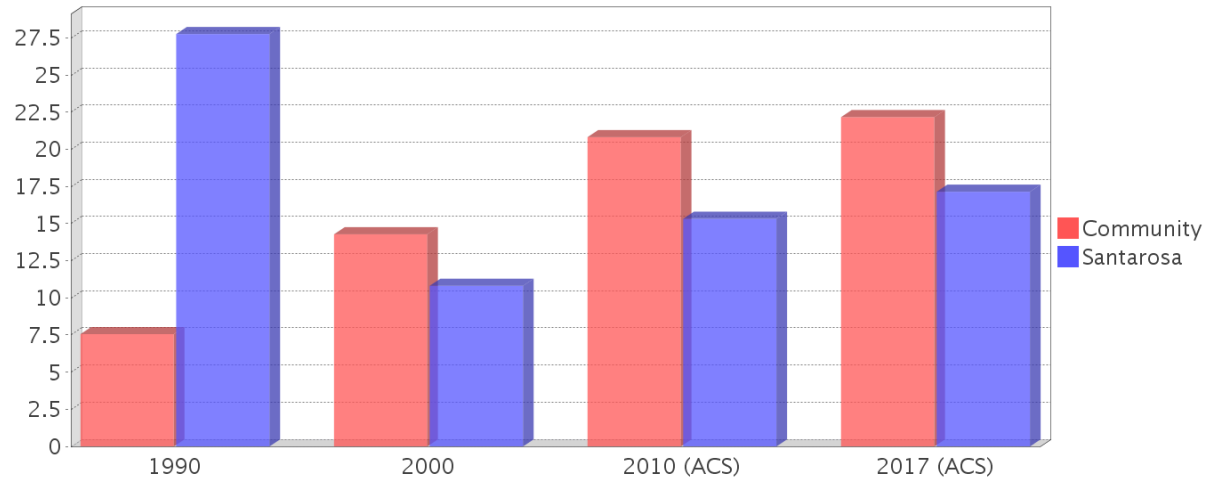
Population



Race



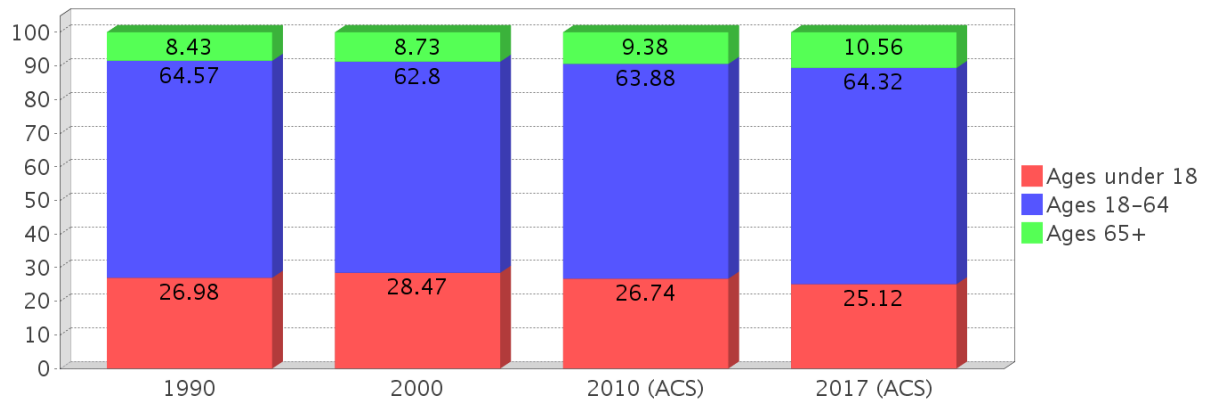
Minority Percentage Population



Age Trends

Description	1990	2000	2010 (ACS)	2017 (ACS)
Under Age 5	9.46%	6.84%	7.28%	6.87%
Ages 5-17	17.52%	21.63%	19.46%	18.25%
Ages 18-21	3.74%	3.46%	4.81%	5.02%
Ages 22-29	16.45%	8.04%	10.59%	10.92%
Ages 30-39	19.43%	21.64%	14.18%	13.25%
Ages 40-49	10.94%	15.70%	17.29%	14.97%
Ages 50-64	14.00%	13.95%	17.02%	20.15%
Age 65 and Over	8.43%	8.73%	9.38%	10.56%
-Ages 65-74	6.05%	6.18%	6.23%	6.92%
-Ages 75-84	2.04%	2.25%	2.66%	3.12%
-Age 85 and Over	0.36%	0.31%	0.49%	0.52%
Median Age	NA	35	36	36

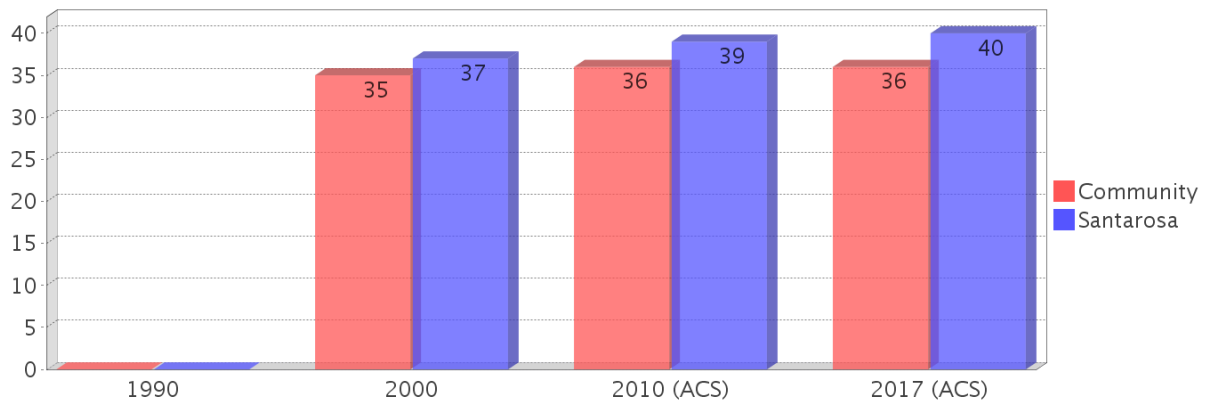
Percentage Population by Age Group



Income Trends

Description	1990	2000	2010 (ACS)	2017 (ACS)
Median Household Income	\$22,662	\$43,494	\$62,022	\$67,671
Median Family Income	\$25,416	\$47,674	\$70,313	\$70,680
Population below Poverty Level	10.97%	7.74%	11.76%	9.78%
Households below Poverty Level	8.70%	7.96%	8.18%	10.53%
Households with Public Assistance Income	4.18%	1.60%	0.70%	1.53%

Median Age Comparison

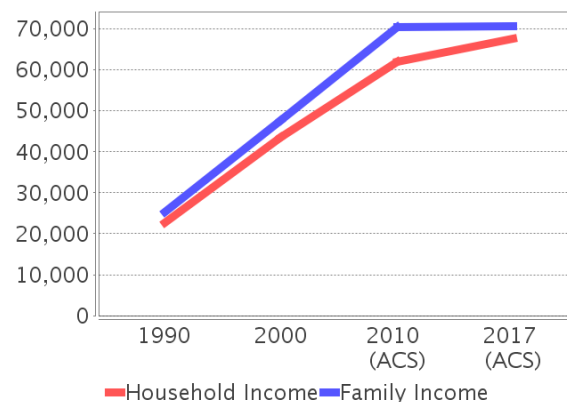


Disability Trends

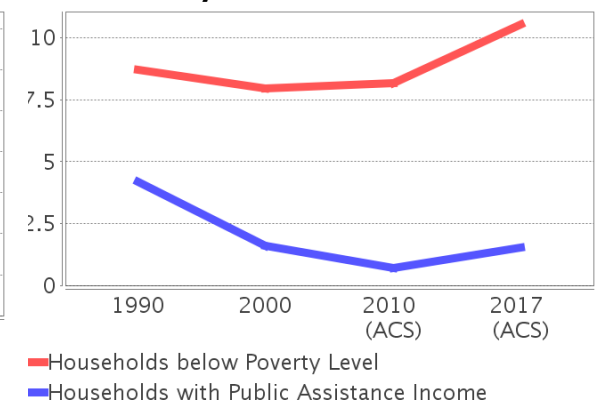
See the Data Sources section below for an explanation about the differences in disability data among the various years.

Description	1990	2000	2010 (ACS)	2017 (ACS)
Population 16 To 64 Years with a disability	403 (8.98%)	2015 (13.78%)	(NA)	(NA)
Population 20 To 64 Years with a disability	(NA)	(NA)	(NA)	1906 (9.90%)

Income Trends



Poverty and Public Assistance



Educational Attainment Trends

Age 25 and Over

Description	1990	2000	2010 (ACS)	2017 (ACS)
Less than 9th Grade	231 (5.14%)	391 (3.46%)	463 (2.63%)	361 (1.74%)
9th to 12th Grade, No Diploma	695 (15.48%)	787 (6.96%)	980 (5.56%)	809 (3.89%)
High School Graduate or Higher	3,564 (79.36%)	10,136 (89.59%)	16,188 (91.82%)	19,602 (94.37%)
Bachelor's Degree or Higher	631 (14.05%)	2,781 (24.58%)	4,791 (27.17%)	5,471 (26.34%)

Language Trends

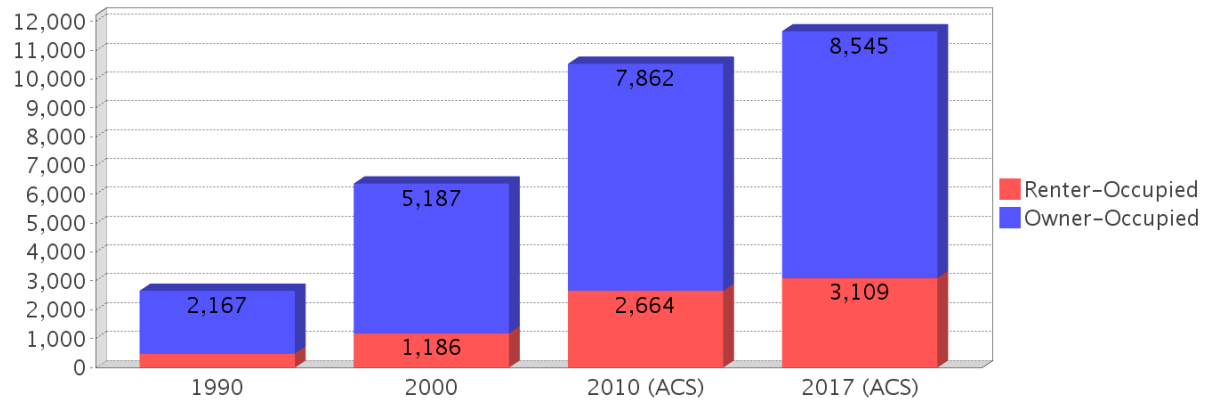
Age 5 and Over

Description	1990	2000	2010 (ACS)	2017 (ACS)
Speaks English Well	129 (2.05%)	254 (1.59%)	659 (2.62%)	528 (1.80%)
Speaks English Not Well	NA (NA)	150 (0.94%)	397 (1.58%)	254 (0.87%)
Speaks English Not at All	NA (NA)	13 (0.08%)	83 (0.33%)	29 (0.10%)
Speaks English Not Well or Not at All	87 (1.38%)	163 (1.02%)	480 (1.91%)	283 (0.97%)

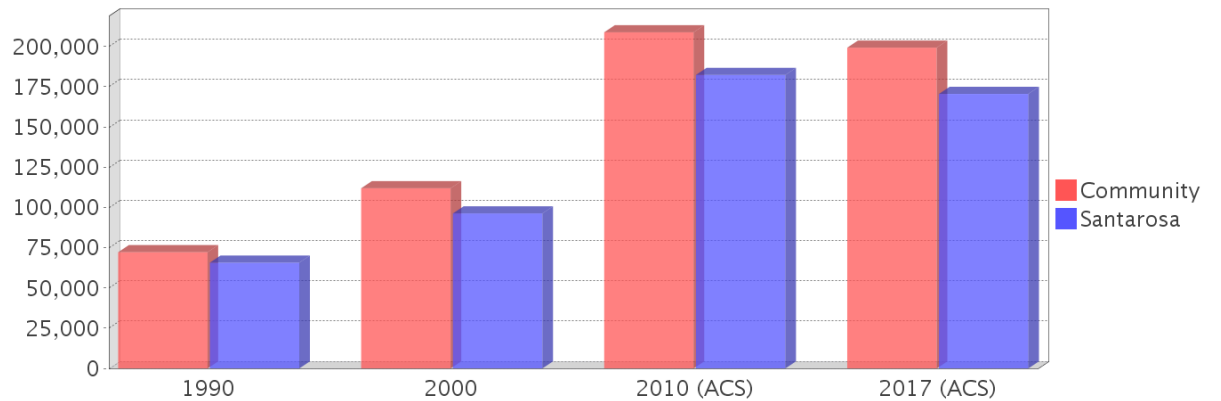
Housing Trends

Description	1990	2000	2010 (ACS)	2017 (ACS)
Total	3,028	7,862	11,700	12,863
Units per Acre	0.22	0.57	0.85	0.93
Single-Family Units	1,472	5,180	9,002	10,461
Multi-Family Units	119	1,153	698	955
Mobile Home Units	1,057	1,527	1,424	1,426
Owner-Occupied Units	2,167	5,187	7,862	8,545
Renter-Occupied Units	487	1,186	2,664	3,109
Vacant Units	374	1,489	1,174	1,208
Median Housing Value	\$72,200	\$111,900	\$208,800	\$199,250
Occupied Housing Units w/No Vehicle	55 (2.07%)	136 (2.13%)	258 (2.45%)	387 (3.32%)

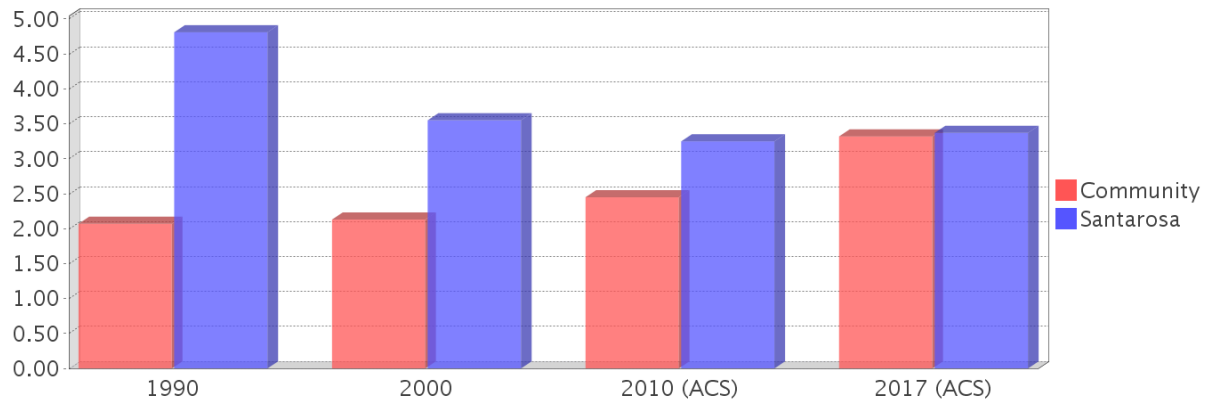
Housing Tenure



Median Housing Value Comparison

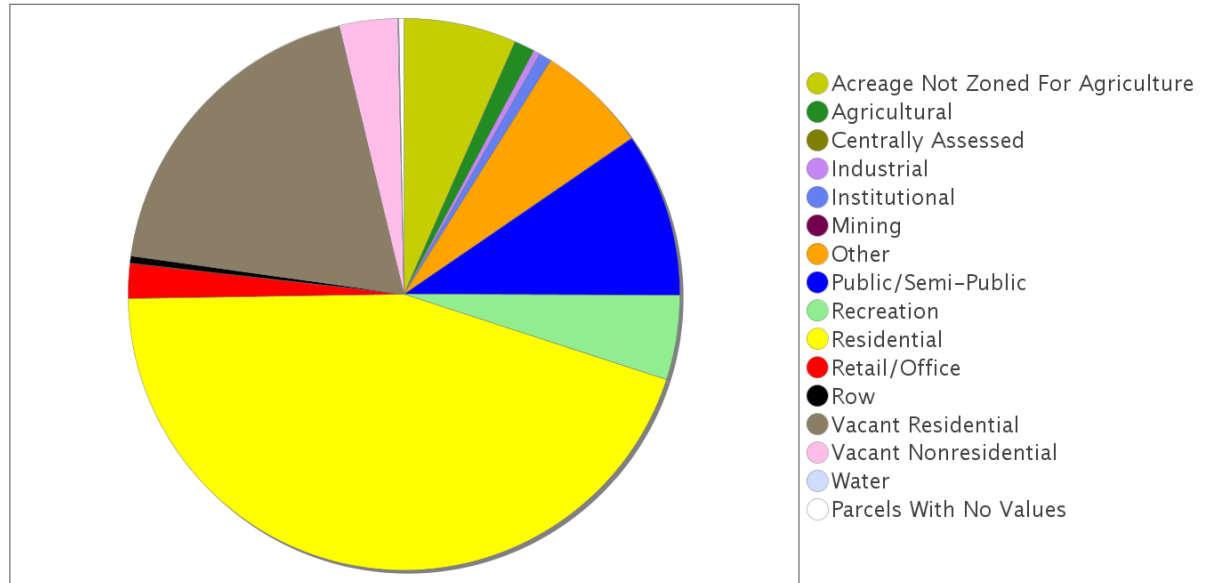


Occupied Units With No Vehicles Available

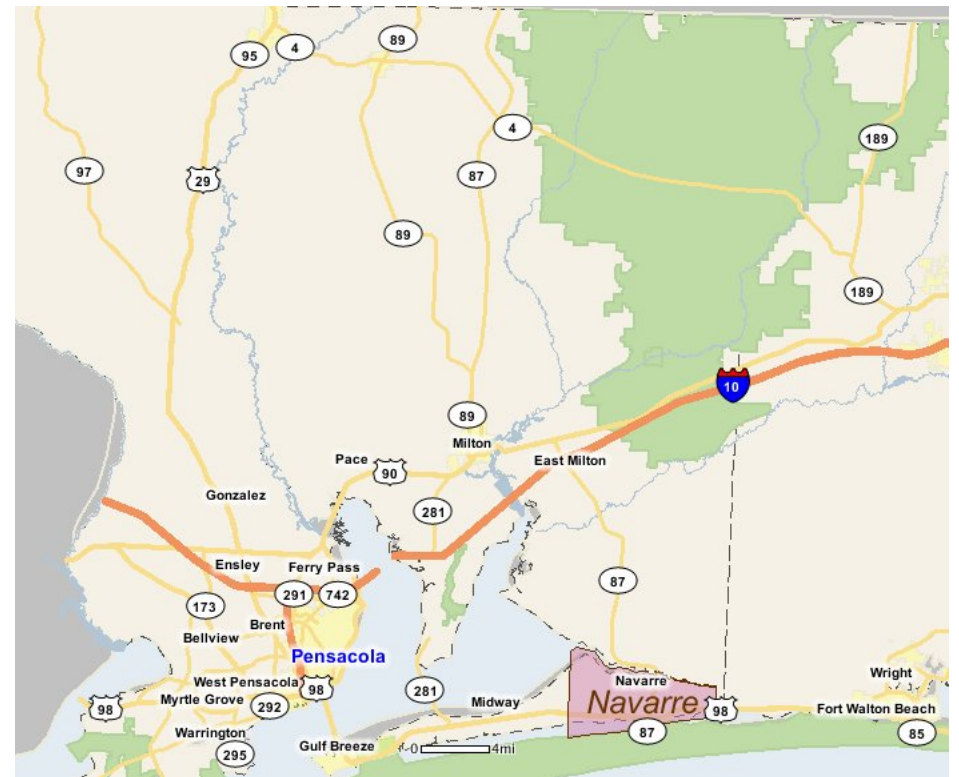


Existing Land Use

Land Use Type	Acres	Percentage
Acreage Not Zoned For Agriculture	856	4.57%
Agricultural	158	0.84%
Centrally Assessed	0	0.00%
Industrial	48	0.26%
Institutional	98	0.52%
Mining	0	0.00%
Other	843	4.50%
Public/Semi-Public	1,252	6.68%
Recreation	642	3.43%
Residential	5,808	31.00%
Retail/Office	262	1.40%
Row	58	0.31%
Vacant Residential	2,468	13.17%
Vacant Nonresidential	441	2.35%
Water	10	0.05%
Parcels With No Values	37	0.20%



Location Maps



Community Facilities

The community facilities information below is useful in a variety of ways for environmental evaluations. These community resources should be evaluated for potential sociocultural effects, such as accessibility and relocation potential. The facility types may indicate the types of population groups present in the project study area. Facility staff and leaders can be sources of community information such as who uses the facility and how it is used. Additionally, community facilities are potential public meeting venues.

Community Centers (Points)

Facility Name	Address	Zip Code
NAVARRE COMMUNITY CENTER	1917 HIGH SCHOOL BLVD	32566
AMERICAN LEGION POST 382	1850 LUNETTA ST	32566
CHAMBER OF COMMERCE - NAVARRE BEACH	1917 NAVARRE SCHOOL RD	32566
YMCA - NAVARRE	2379 PAWNEE DR	32566
ELKS LODGE 2787	2024 BLESSED LN	32566

Cultural Centers (Points)

Facility Name	Address	Zip Code
NAVARRE LIBRARY	8484 JAMES M HARVELL RD	32566

Fire Stations (Points)

Facility Name	Address	Zip Code
HOLLEY-NAVARRE FIRE DEPARTMENT STATION 43	8205 E BAY BLVD	32566
HOLLEY-NAVARRE FIRE DEPARTMENT STATION 41	6893 MANATEE ST	32566
HOLLEY-NAVARRE FIRE DEPARTMENT STATION 45	8618 ESPLANDE ST	32566

Florida Parks and Recreational Facilities (Points)

Facility Name	Address	Zip Code
NAVARRE SPORTS COMPLEX	2497 PAWNEE DR	32566
HOLLEY-BY-THE-SEA PARK #7	COVE RD & 1ST CT	32566
HOLLEY-BY-THE-SEA PARK #4	PEPPERWOOD ST	32566
HOLLEY-BY-THE-SEA PARK #2	FRANKFORT ST & SMALLWOOD LN	32566
WEST NAVARRE PARK	BLUETIP DR	32566
WEST NAVARRE PARK	POMPARNO ST	32566
NAVARRE SOCCER/FOOTBALL PARK	9299 MILITARY TRL	32566
HOLLEY-BY-THE-SEA PARK #3	REXFORD ST	32566
ALPINE BEACH PARK #1	SALEM AVE & NEWPORT ST	32566
NAVARRE PARK	8543 NAVARRE PKWY	32572
HOLLEY-BY-THE-SEA PARK #1	WAVERLY CT	32566
ALPINE BEACH PARK #2	NEWPORT ST & ALPINE DR	32566

Government Building

Facility Name	Address	Zip Code
U S POST OFFICE - NAVARRE	1910 NAVARRE SCHOOL RD	32566

Healthcare Facilities (Geocoded)

Facility Name	Address	Zip Code
MAIKA HEALTHCARE LLC	7552 NAVARRE PARKWAY, SUITE 13	32566
SANTA ROSA MEDICAL GROUP, NAVARRE	1929 ORTEGA STREET	32566
WHITE WILSON MEDICAL CENTER	8990 NAVARRE PARKWAY	32566
CAMMACK CLINIC PA	7552 NAVARRE PARKWAY, UNIT 45	32566
PAUL J PANDOLFI, MD	7552 NAVARRE PARKWAY, SUITE 10	32566
BAPTIST MEDICAL GROUP - NAVARRE	8880 NAVARRE PARKWAY, SUITE 101	32566
NAVARRE PEDIATRICS	8880 NAVARRE PARKWAY, SUITE 102	32566
FAMILY MEDICINE ASSOC. OF THE GULF COAST	7552 NAVARRE PARKWAY, SUITE 21	32566
RCG LLC DBA RCG-NAVARRE	8888 NAVARRE PARKWAY	32566
HOLLEY NAVARRE MEDICAL CLINIC	7552 NAVARRE PARKWAY, SUITE 28	32566
EMERALD COAST MED SPA & WELLNESS	8123 NAVARRE PARKWAY	32566

Facility Name	Address	Zip Code
MEDICAL CENTER CLINIC	8880 NAVARRE PARKWAY, SUITE 201	32566
BAPTIST MEDICAL PARK NAVARRE	8888 NAVARRE PARKWAY	32566
GULF COAST DERMATOLOGY PA	8880 NAVARRE PARKWAY, SUITE 201	32566

Law Enforcement Facilities (Points)

Facility Name	Address	Zip Code
SANTA ROSA COUNTY SHERIFF'S OFFICE - DISTRICT 2	8597 HIGH SCHOOL BLVD	32566

Mobile Home Parks in Florida

Facility Name	Address	Zip Code
COLONIAL PINES MOBILE ESTATES	2101 COLONIAL AVE.	34955

Public and Private Schools (Points)

Facility Name	Address	Zip Code
THE ADAM NOUS ACADEMY	6684 KEMPTON STREET	32566
HOLLEY-NAVARRE PRIMARY	8019 ESCOLA ST	32566
NAVARRE HIGH SCHOOL	8600 HIGH SCHOOL BLVD	32566
WEST NAVARRE PRIMARY SCHOOL	1955 LOWE ROAD	32566
WEST NAVARRE INTERMEDIATE SCHOOL	1970 COTTON BAY LN	32566
HOLLEY-NAVARRE INTERMEDIATE	1936 NAVARRE SCHOOL RD	32566
GULF POINTE LATIN SCHOOL CORPORATION	8851 NAVARRE PARKWAY	32566
HOLLEY-NAVARRE MIDDLE SCHOOL	1976 WILLIAMS CREEK DR	32566
LITTLE LEARNERS ACADEMY OF NAVARRE	8754 ORTEGA PARK DRIVE	32566

Religious Centers (Points)

Facility Name	Address	Zip Code
LIVING WORD EVANGELISTIC ASSOCIATION	9031 SUNSET DRIVE	32566
CALVARY FELLOWSHIP	2834 HWY 87 S	32566
COVENANT COMMUNITY CHURCH	9212 QUAIL ROOST DRIVE	32566
WORD OF FAITH CHRISTIAN CENTER	7129 E BAY BLVD	32566
NAVARRE PRESBYTERIAN CHURCH	1870 LOWE ROAD	32566
FIRST BAPTIST CHURCH OF NAVARRE	9336 NAVARRE PARKWAY	32566
CHURCH OF JESUS CHRIST OF LATTER DAY SAINTS	1751 SEA LARK LN	32566
ST AUGUSTINES EPISCOPAL CHURCH	7810 NAVARRE PARKWAY	32566
NEW LIFE DELIVERANCE TEMPLE	2104 PANHANDLE TRAIL	32566
NAVARRE FIRST ASSEMBLY OF GOD	9594 NAVARRE PARKWAY	32566
LIVE OAK CHURCH OF NAVARRE	7304 EAST BAY BLVD	32566
NAVARRE CHURCH OF CHRIST	8490 JAMES HARVELL RD	32566
NAVARRE CHAPEL & ACADEMY	9402 NAVARRE PARKWAY	32566
WAT FLORIDA BUDDHARAM CORP	2137 FOX DEN DR	32566
RISEN SAVIOR LUTHERAN CHURCH	9664 NAVARRE PARKWAY	32566
COMMUNITY OF CHRIST CHURCH	2111 PRESIDIO STREET	32566
SHAW MINISTRIES WILMA M	8841 PEBBLE BROOK DR	32566
NAVARRE UNITED METHODIST CHURCH	9474 NAVARRE PARKWAY	32566
LUTHERN MINISTRIES OF FLORIDA	1724 SHELLFISH DR	32566
APOSTOLIC LIGHTHOUSE CHURCH	8177 EAST BAY BLVD	32566
MAINLINE PENTECOSTAL MINISTRY	2834 HIGHWAY 87	32566

US Census Places

Facility Name
Navarre Beach
Midway
Navarre
Woodlawn Beach
Holley

Veteran Organizations and Facilities (Points)

Facility Name	Address	Zip Code
AMERICAN LEGION POST 382	1850 LUNETTA STREET	32566

Block Groups

The following Census Block Groups were used to calculate demographics for this report.

1990 Census Block Groups

121130108021, 121130108038, 121130108037

2000 Census Block Groups

121130108051, 121130108062, 120910231001, 121130108072, 121130108052, 121130108061, 121130108021, 120910208009

2010 Census Block Groups

121130108021, 121130108193, 121130108022, 121130108192, 121130108113, 121130108191, 121130108111, 121130108112, 121130108152, 121130108172, 120910231002, 121130108171

2017 Census Block Groups

121130108022, 121130108172, 121130108113, 121130108111, 121130108152, 121130108191, 121130108021, 121130108171, 120910231002, 121130108192, 121130108112, 121130108193

Data Sources

Area

The geographic area of the community based on a user-specified community boundary or area of interest (AOI) boundary.

Jurisdiction

Jurisdiction(s) includes local government boundaries that intersect the community or AOI boundary.

Demographic Data

Demographic data reported under the headings General Population Trends, Race and Ethnicity Trends, Age Trends, Income Trends, Educational Attainment Trends, Language Trends, and Housing Trends is from the U.S. Decennial Census (1990, 2000) and the American Community Survey (ACS) 5-year estimates from 2006-2010 and 2013-2017. The data was gathered at the block group level for user-specified community boundaries and AOIs, and at the county level for counties. Depending on the dataset, the data represents 100% counts (Census Summary File 1) or sample-based information (Census Summary File 3 or ACS).

About the Census Data:

User-specified community boundaries and AOIs do not always correspond precisely to block group boundaries. In these instances, adjustment of the geographic area and data for affected block groups is required to estimate the actual population. To improve the accuracy of such estimates in the SDR report, the census block group data was adjusted to exclude all census blocks with a population of two or fewer. These areas were eliminated from the corresponding years' block groups. Next, the portion of the block group that lies outside of the community or AOI boundary was removed. The demographics within each block group were then recalculated, assuming an equal area distribution of the population. Note that there may be areas where there is no population.

Use caution when comparing the 100% count data (Decennial Census) to the sample-based data (ACS). In any given year, about one in 40 or 2.5% of U.S. households will receive the ACS questionnaire. Over any five-year period, about one in eight households will receive the questionnaire, as compared to about one in six that received the long form

questionnaire for the Decennial Census 2000. (Source: <http://mcdc.missouri.edu/pub/data/acs/Readme.shtml>) The U.S. Census Bureau provides help with this process:

<https://www.census.gov/programs-surveys/acs/guidance/comparing-acs-data/2017.html>

Use caution when interpreting changes in Race and Ethnicity over time. Starting with the 2000 Decennial Census, respondents were given a new option of selecting one or more race categories. Also in 2000, the placement of the question about Hispanic origin changed, helping to increase responsiveness to the Hispanic-origin question. Because of these and other changes, the 1990 data on race and ethnicity are not directly comparable with data from later censuses. (Source: <http://www.census.gov/prod/2001pubs/c2kbr01-1.pdf>; <http://www.census.gov/pred/www/rpts/Race%20and%20Ethnicity%20FINAL%20report.pdf>)

The "Minority" calculations are derived from Census and ACS data using both the race and ethnicity responses. On this report, "Minority" refers to individuals who list a race other than White and/or list their ethnicity as Hispanic/Latino. In other words, people who are multi-racial, any single race other than White, or Hispanic/Latino of any race are considered minorities.

Disability data is not included in the 2010 Decennial Census, or the 2006-2010 ACS. This data is available in the 2013-2017 ACS.

Because of changes made to the Census and ACS questions between 1990 and 2017, disability variables should not be compared from year to year. For example: 1) With the 1990 data the disabilities are listed as a "work disability" while this distinction is not made with 2000 or 2017 ACS data; 2) The 2017 ACS data includes the institutionalized population (e.g. persons in prisons and group homes), while this population is not included in 1990 or 2000; 3) the age groupings changed over the years.

Please take the following two concerns into account when viewing this data: 1) With the 1990 data the disabilities are listed as a "work disability" while this distinction is not made with 2000 or 2017 ACS data; 2) The 2017 ACS data includes the institutionalized population (e.g. persons in prisons and group homes), while this population is not included in 1990 or 2000.

The category Bachelor's Degree or Higher under the heading Educational Attainment Trends is a subset of the category High School Graduate or Higher.

Income of households. This includes the income of the householder and all other individuals 15 years old and over in the household, whether they are related to the householder or not. Because many households consist of only one person, average household income is usually less than average family income.

Income of families. In compiling statistics on family income, the incomes of all members 15 years old and over related to the householder are summed and treated as a single amount.

Age Trends median age for 1990 is not available.

Land Use Data

The Land Use information Indicates acreages and percentages for the generalized land use types used to group parcel-specific, existing land use assigned by the county property appraiser office according to the Florida Department of Revenue land use codes.

Community Facilities Data

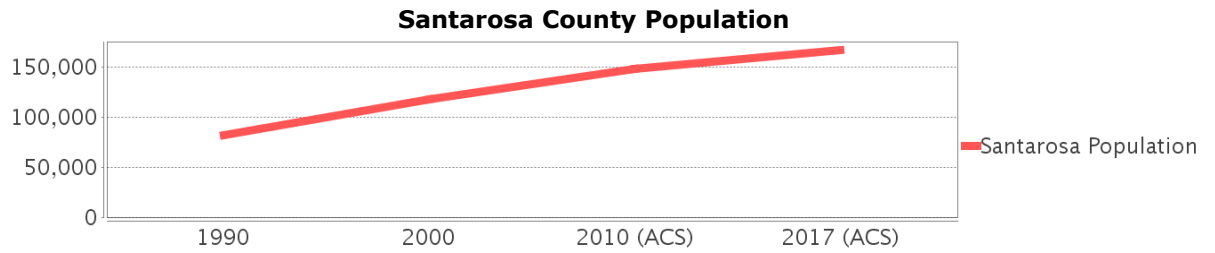
- Assisted Rental Housing Units - Identifies multifamily rental developments that receive funding assistance under federal, state, and local government programs to offer affordable housing as reported by the Shimberg Center for Housing Studies, University of Florida.
- Mobile Home Parks - Identifies approved or acknowledged mobile home parks reported by the Florida Department of Business and Professional Regulation and Florida Department of Health.

- Migrant Camps - Identifies migrant labor camp facilities inspected by the Florida Department of Health.
- Group Care Facilities - Identifies group care facilities inspected by the Florida Department of Health.
- Community Center and Fraternal Association Facilities - Identifies facilities reported by multiple sources.
- Law Enforcement Correctional Facilities - Identifies facilities reported by multiple sources.
- Cultural Centers - Identifies cultural centers including organizations, buildings, or complexes that promote culture and arts (e.g., aquariums and zoological facilities; arboreta and botanical gardens; dinner theaters; drive-ins; historical places and services; libraries; motion picture theaters; museums and art galleries; performing arts centers; performing arts theaters; planetariums; studios and art galleries; and theater producers stage facilities) reported by multiple sources.
- Fire Department and Rescue Station Facilities - Identifies facilities reported by multiple sources.
- Government Buildings - Identifies local, state, and federal government buildings reported by multiple sources.
- Health Care Facilities - Identifies health care facilities including abortion clinics, dialysis clinics, medical doctors, nursing homes, osteopaths, state laboratories/clinics, and surgicenters/walk-in clinics reported by the Florida Department of Health.
- Hospital Facilities - Identifies hospital facilities reported by multiple sources.
- Law Enforcement Facilities - Identifies law enforcement facilities reported by multiple sources.
- Parks and Recreational Facilities - Identifies parks and recreational facilities reported by multiple sources.
- Religious Center Facilities - Identifies religious centers including churches, temples, synagogues, mosques, chapels, centers, and other types of religious facilities reported by multiple sources.
- Private and Public Schools - Identifies private and public schools reported by multiple sources.
- Social Service Centers - Identifies social service centers reported by multiple sources.
- Veteran Organizations and Facilities

Santarosa County Demographic Profile

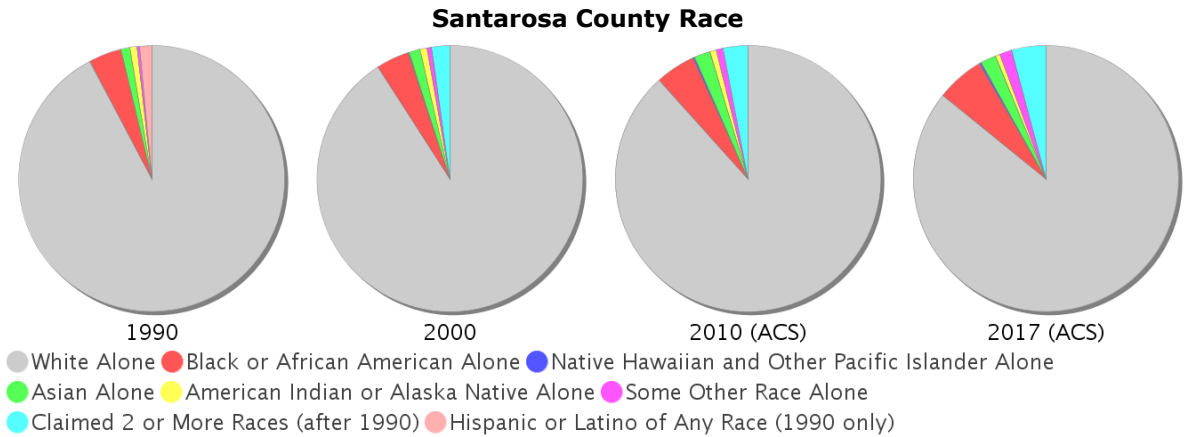
General Population Trends - Santarosa

Description	1990	2000	2010 (ACS)	2017 (ACS)
Total Population	81,608	117,743	147,838	166,778
Total Households	29,900	43,793	54,860	60,607
Average Persons per Acre	0.125	0.18	0.225	0.254
Average Persons per Household	2.729	2.627	3.00	2.65
Average Persons per Family	3.10	3.05	3.08	3.12
Males	40,644	59,153	74,289	85,374
Females	40,964	58,590	73,549	81,404



Race and Ethnicity Trends - Santarosa

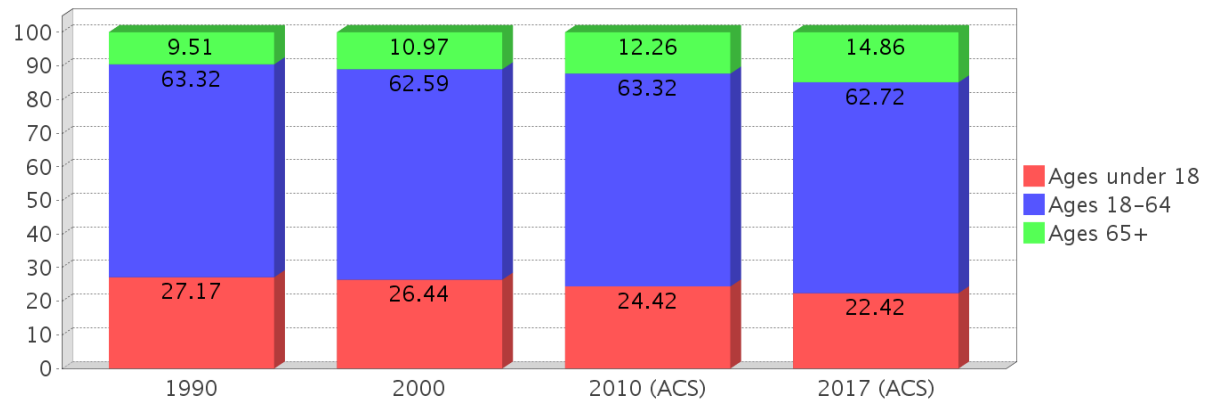
Description	1990	2000	2010 (ACS)	2017 (ACS)
White Alone	76,385 (93.60%)	106,976 (90.86%)	130,575 (88.32%)	143,112 (85.81%)
Black or African American Alone	3,275 (4.01%)	4,777 (4.06%)	7,229 (4.89%)	9,751 (5.85%)
Native Hawaiian and Other Pacific Islander Alone	(NA)	111 (0.09%)	248 (0.17%)	352 (0.21%)
Asian Alone	911 (1.12%)	1,608 (1.37%)	2,987 (2.02%)	3,236 (1.94%)
American Indian or Alaska Native Alone	715 (0.88%)	1,006 (0.85%)	1,112 (0.75%)	871 (0.52%)
Some Other Race Alone	260 (0.32%)	678 (0.58%)	1,207 (0.82%)	2,512 (1.51%)
Claimed 2 or More Races	(NA)	2,587 (2.20%)	4,480 (3.03%)	6,944 (4.16%)
Hispanic or Latino of Any Race	1,223 (1.50%)	2,821 (2.40%)	6,061 (4.10%)	8,736 (5.24%)
Not Hispanic or Latino	80,385 (98.50%)	114,922 (97.60%)	141,777 (95.90%)	158,042 (94.76%)
Minority	22,646 (27.75%)	12,727 (10.81%)	22,646 (15.32%)	28,580 (17.14%)



Age Trends - Santarosa

Description	1990	2000	2010 (ACS)	2017 (ACS)
Under Age 5	7.81%	6.60%	6.10%	5.71%
Ages 5-17	19.36%	19.84%	18.33%	16.71%
Ages 18-21	5.14%	4.21%	4.87%	4.47%
Ages 22-29	13.13%	8.99%	9.59%	10.67%
Ages 30-39	17.23%	16.69%	13.25%	13.14%
Ages 40-49	13.57%	16.20%	16.25%	13.42%
Ages 50-64	14.26%	16.51%	19.37%	21.02%
Age 65 and Over	9.51%	10.97%	12.26%	14.86%
-Ages 65-74	6.14%	7.04%	7.61%	9.09%
-Ages 75-84	2.68%	2.98%	3.78%	4.58%
-Age 85 and Over	0.69%	0.96%	0.87%	1.19%
Median Age	NA	37	39	40

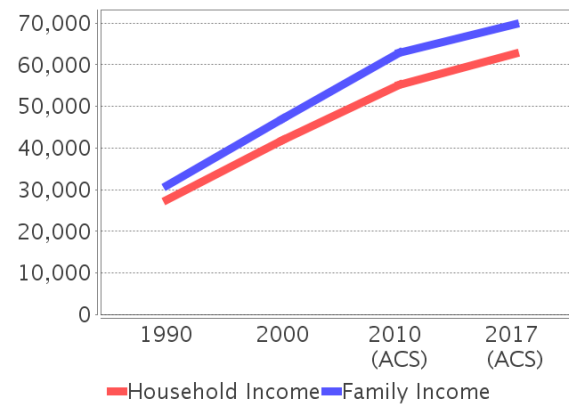
Percentage Population by Age Group - Santarosa



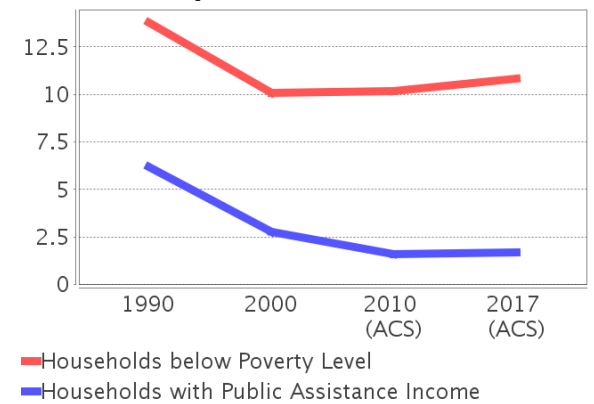
Income Trends - Santarosa

Description	1990	2000	2010 (ACS)	2017 (ACS)
Median Household Income	\$27,584	\$41,881	\$55,129	\$62,731
Median Family Income	\$31,033	\$46,929	\$62,929	\$69,748
Population below Poverty Level	14.16%	9.83%	11.35%	11.31%
Households below Poverty Level	13.78%	10.06%	10.19%	10.82%
Households with Public Assistance Income	6.19%	2.76%	1.57%	1.66%

Income Trends



Poverty and Public Assistance



Disability Trends - Santarosa

See the Data Sources section below for an explanation about the differences in disability data among the various years.

Description	1990	2000	2010 (ACS)	2017 (ACS)
Population 16 To 64 Years with a disability	5,795 (9.92%)	15,251 (14.56%)	NA (NA)	NA (NA)
Population 20 To 64 Years with a disability	NA (NA)	NA (NA)	NA (NA)	12,995 (13.64%)

Educational Attainment Trends - Santarosa

Age 25 and Over

Description	1990	2000	2010 (ACS)	2017 (ACS)
Less than 9th Grade	3,996 (7.70%)	3,120 (3.99%)	3,238 (3.26%)	2,770 (2.40%)
9th to 12th Grade, No Diploma	7,186 (13.84%)	8,265 (10.57%)	8,338 (8.38%)	7,996 (6.94%)
High School Graduate or Higher	40,740 (78.46%)	66,781 (85.43%)	87,874 (88.36%)	104,442 (90.66%)
Bachelor's Degree or Higher	9,653 (18.59%)	17,881 (22.88%)	24,610 (24.75%)	31,247 (27.12%)

Language Trends - Santarosa

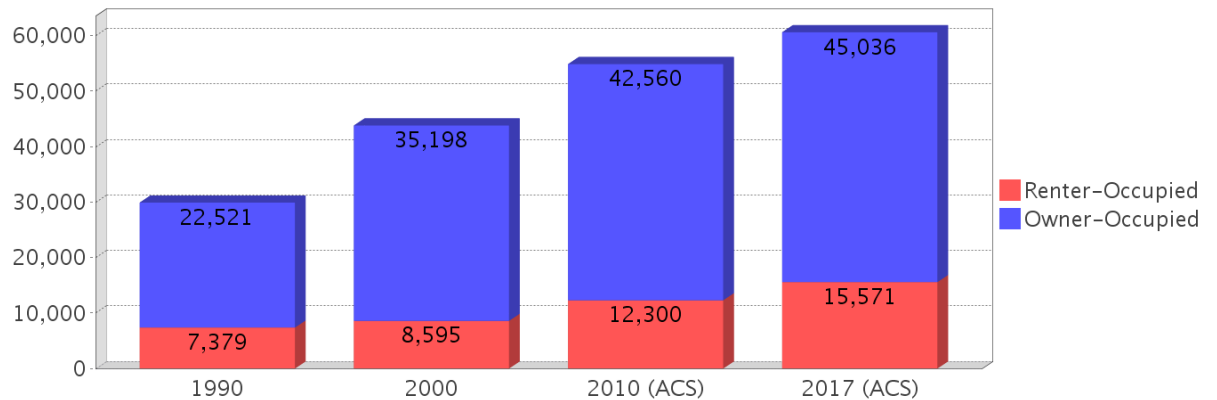
Age 5 and Over

Description	1990	2000	2010 (ACS)	2017 (ACS)
Speaks English Well	581 (0.77%)	1,062 (0.97%)	1,968 (1.42%)	1,615 (1.03%)
Speaks English Not Well	NA (NA)	550 (0.50%)	1,018 (0.73%)	947 (0.60%)
Speaks English Not at All	NA (NA)	57 (0.05%)	260 (0.19%)	179 (0.11%)
Speaks English Not Well or Not at All	325 (0.43%)	607 (0.55%)	1,278 (0.92%)	1,126 (0.72%)

Housing Trends - Santarosa

Description	1990	2000	2010 (ACS)	2017 (ACS)
Total	32,831	49,119	63,059	69,166
Units per Acre	0.05	0.075	0.096	0.105
Single-Family Units	21,487	35,967	48,174	54,179
Multi-Family Units	2,620	4,510	6,631	6,744
Mobile Home Units	5,639	8,586	8,105	8,150
Owner-Occupied Units	22,521	35,198	42,560	45,036
Renter-Occupied Units	7,379	8,595	12,300	15,571
Vacant Units	2,931	5,326	8,199	8,559
Median Housing Value	\$65,700	\$96,300	\$182,300	\$170,500
Occupied Housing Units w/No Vehicle	1,439 (4.81%)	1,553 (3.55%)	1,783 (3.25%)	2,041 (3.37%)

Housing Tenure - Santarosa



County Data Sources

Demographic data reported is from the U.S. Decennial Census (1990, 2000) and the American Community Survey (ACS) 5-year estimates from 2006-2010 and 2013-2017. The data was gathered at the county level. Depending on the dataset, the data represents 100% counts (Census Summary File 1) or sample-based information (Census Summary File 3 or ACS).

About the Census Data:

Use caution when comparing the 100% count data (Decennial Census) to the sample-based data (ACS). In any given year, about one in 40 or 2.5% of U.S. households will receive the ACS questionnaire. Over any five-year period, about one in eight households will receive the questionnaire, as compared to about one in six that received the long form questionnaire for the Decennial Census 2000. (Source: <http://mcdc.missouri.edu/pub/data/acs/Readme.shtml>) The U.S. Census Bureau provides help with this process:

<https://www.census.gov/programs-surveys/acs/guidance/comparing-acs-data/2017.html>

Use caution when interpreting changes in Race and Ethnicity over time. Starting with the 2000 Decennial Census, respondents were given a new option of selecting one or more race categories. Also in 2000, the placement of the question about Hispanic origin changed, helping to increase responsiveness to the Hispanic-origin question. Because of these and other changes, the 1990 data on race and ethnicity are not directly comparable with data from later censuses. (Source: <http://www.census.gov/prod/2001pubs/c2kbr01-1.pdf>;
<http://www.census.gov/pred/www/rpts/Race%20and%20Ethnicity%20FINAL%20report.pdf>)

The "Minority" calculations are derived from Census and ACS data using both the race and ethnicity responses. On this report, "Minority" refers to individuals who list a race other than White and/or list their ethnicity as Hispanic/Latino. In other words, people who are multi-racial, any single race other than White, or Hispanic/Latino of any race are considered minorities.

Disability data is not included in the 2010 Decennial Census, or the 2006-2010 ACS. This data is available in the 2013-2017 ACS.

Because of changes made to the Census and ACS questions between 1990 and 2017, disability variables should not be compared from year to year. For example: 1) With the 1990 data the disabilities are listed as a "work disability" while this distinction is not made with 2000 or 2017 ACS data; 2) The 2017 ACS data includes the institutionalized population (e.g. persons in prisons and group homes), while this population is not included in 1990 or 2000; 3) the age groupings changed over the years.

Please take the following two concerns into account when viewing this data: 1) With the 1990 data the disabilities are listed as a "work disability" while this distinction is not made with 2000 or 2017 ACS data; 2) The 2017 ACS data includes the institutionalized population (e.g. persons in prisons and group homes), while this population is not included in 1990 or 2000.

source:

<https://www.census.gov/people/disability/methodology/acs.html>

<https://www.census.gov/population/www/cen2000/90vs00/index.html>

The category Bachelor's Degree or Higher under the heading Educational Attainment Trends is a subset of the category High School Graduate or Higher.

Metadata

- Community and Fraternal Centers https://etdmpub.florida-estat.org/metadata/gc_communitycenter.htm
- Correctional Facilities in Florida https://etdmpub.florida-estat.org/metadata/gc_correctional.htm
- Cultural Centers in Florida https://etdmpub.florida-estat.org/metadata/gc_culturecenter.htm
- Fire Department and Rescue Station Facilities in Florida https://etdmpub.florida-estat.org/metadata/gc_firestat.htm
- Local, State, and Federal Government Buildings in Florida https://etdmpub.florida-estat.org/metadata/gc_govbuild.htm
- Florida Health Care Facilities https://etdmpub.florida-estat.org/metadata/gc_health.htm
- Hospital Facilities in Florida https://etdmpub.florida-estat.org/metadata/gc_hospitals.htm
- Law Enforcement Facilities in Florida https://etdmpub.florida-estat.org/metadata/gc_lawenforce.htm
- Florida Parks and Recreational Facilities https://etdmpub.florida-estat.org/metadata/gc_parks.htm
- Religious Centers https://etdmpub.florida-estat.org/metadata/gc_religion.htm
- Florida Public and Private Schools https://etdmpub.florida-estat.org/metadata/gc_schools.htm
- Social Service Centers https://etdmpub.florida-estat.org/metadata/gc_socialservice.htm
- Assisted Rental Housing Units in Florida https://etdmpub.florida-estat.org/metadata/gc_assisted_housing.htm
- Group Care Facilities <https://etdmpub.florida-estat.org/metadata/groupcare.htm>
- Mobile Home Parks in Florida https://etdmpub.florida-estat.org/metadata/gc_mobilehomes.htm
- Migrant Camps in Florida <https://etdmpub.florida-estat.org/metadata/migrant.htm>
- Veteran Organizations and Facilities https://etdmpub.florida-estat.org/metadata/gc_veterans.htm
- Generalized Land Use - Florida DOT District 3 https://etdmpub.florida-estat.org/metadata/d3_lu_gen.htm
- Census Block Groups in Florida https://etdmpub.florida-estat.org/metadata/e2_cenacs_cci.htm
- 1990 Census Block Groups in Florida https://etdmpub.florida-estat.org/metadata/e2_cenblkgrp_1990_cci.htm
- 2000 Census Block Groups in Florida https://etdmpub.florida-estat.org/metadata/e2_cenblkgrp_2000_cci.htm
- 2010 Census Block Groups in Florida https://etdmpub.florida-estat.org/metadata/e2_cenblkgrp_2010_cci.htm