

# Sociocultural Data Report

## Oakleaf Plantation

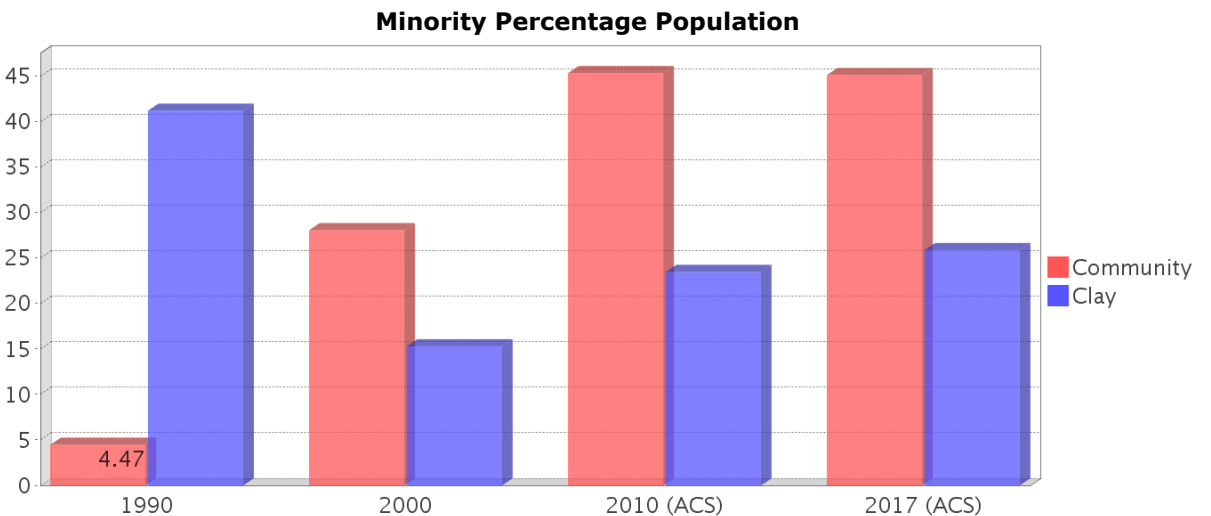
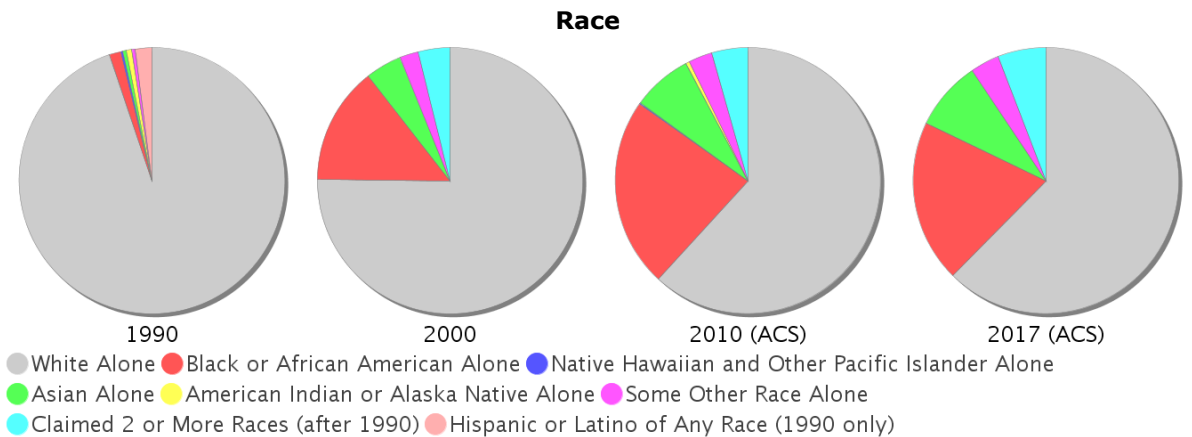
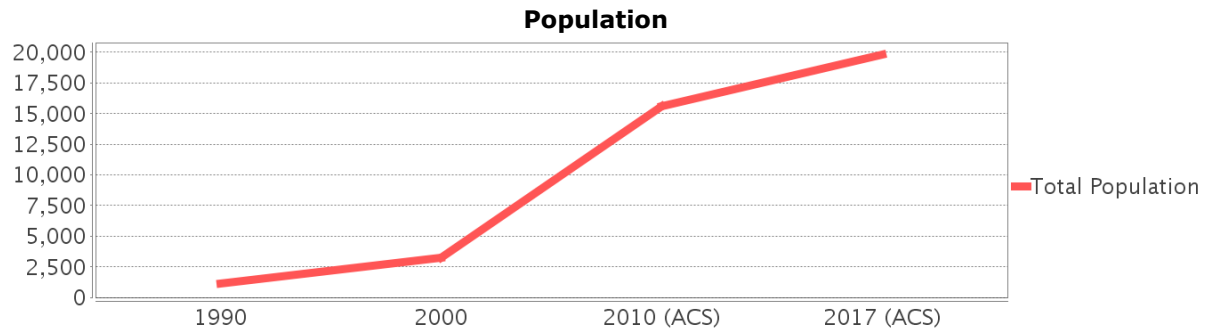
**Area:** 16.585 square miles  
**Jurisdiction(s):** **Cities:** Jacksonville  
**Counties:** Clay

## General Population Trends

Description	1990	2000	2010 (ACS)	2017 (ACS)
Total Population	1,141	3,275	15,620	19,804
Total Households	375	1,070	4,793	5,796
Average Persons per Acre	1.14	1.57	2.31	2.49
Average Persons per Household	4.59	3.14	2.89	2.83
Average Persons per Family	3.60	3.47	3.11	3.20
Males	567	1,601	7,568	9,547
Females	574	1,674	8,052	10,257

## Race and Ethnicity Trends

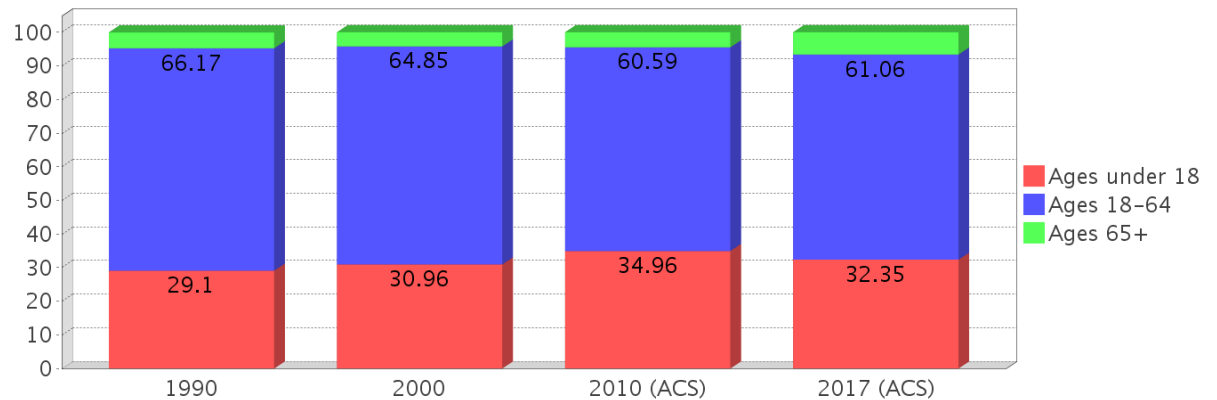
Description	1990	2000	2010 (ACS)	2017 (ACS)
White Alone	1,104 (96.76%)	2,461 (75.15%)	9,651 (61.79%)	12,358 (62.40%)
Black or African American Alone	16 (1.40%)	468 (14.29%)	3,592 (23.00%)	3,910 (19.74%)
Native Hawaiian and Other Pacific Islander Alone	3 (0.26%)	0 (0.00%)	21 (0.13%)	0 (0.00%)
Asian Alone	5 (0.44%)	144 (4.40%)	1,150 (7.36%)	1,670 (8.43%)
American Indian or Alaska Native Alone	8 (0.70%)	0 (0.00%)	61 (0.39%)	0 (0.00%)
Some Other Race Alone	5 (0.44%)	76 (2.32%)	460 (2.94%)	710 (3.59%)
Claimed 2 or More Races	NA (NA)	126 (3.85%)	684 (4.38%)	1,156 (5.84%)
Hispanic or Latino of Any Race	23 (2.02%)	220 (6.72%)	1,910 (12.23%)	2,682 (13.54%)
Not Hispanic or Latino	1,118 (97.98%)	3,055 (93.28%)	13,710 (87.77%)	17,122 (86.46%)
Minority	51 (4.47%)	918 (28.03%)	7,073 (45.28%)	8,924 (45.06%)



### Age Trends

Description	1990	2000	2010 (ACS)	2017 (ACS)
Under Age 5	6.57%	8.12%	8.59%	6.01%
Ages 5-17	22.52%	22.84%	26.37%	26.34%
Ages 18-21	6.92%	5.34%	4.48%	4.38%
Ages 22-29	11.39%	8.40%	8.78%	6.77%
Ages 30-39	16.48%	20.61%	18.29%	14.99%
Ages 40-49	18.76%	17.74%	16.87%	19.94%
Ages 50-64	12.62%	12.76%	12.16%	14.99%
Age 65 and Over	4.65%	4.18%	4.45%	6.58%
-Ages 65-74	3.77%	1.53%	3.16%	4.87%
-Ages 75-84	0.79%	2.66%	0.96%	1.45%
-Age 85 and Over	0.09%	0.00%	0.33%	0.26%
Median Age	NA	32	37	36

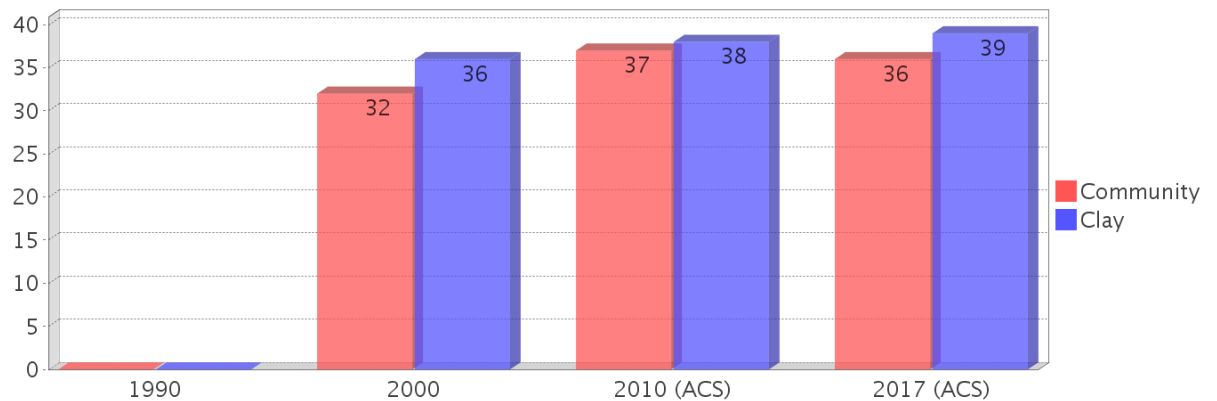
### Percentage Population by Age Group



### Income Trends

Description	1990	2000	2010 (ACS)	2017 (ACS)
Median Household Income	\$35,078	\$50,426	\$68,872	\$74,282
Median Family Income	\$41,118	\$53,317	\$71,394	\$79,304
Population below Poverty Level	3.68%	3.82%	7.74%	4.85%
Households below Poverty Level	2.93%	3.74%	6.47%	7.52%
Households with Public Assistance Income	2.40%	1.03%	1.71%	2.28%

### Median Age Comparison

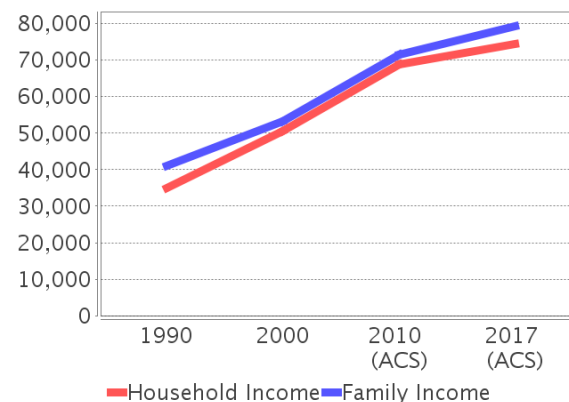


### Disability Trends

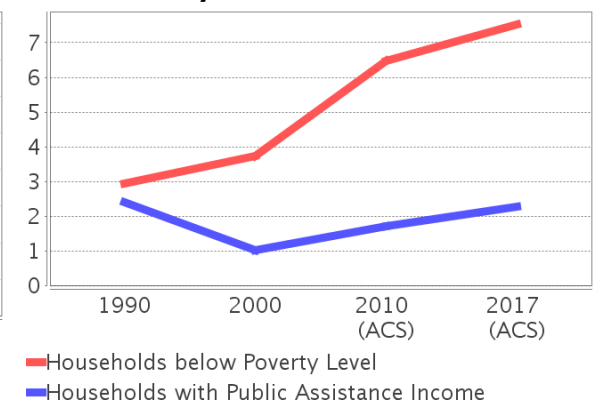
See the Data Sources section below for an explanation about the differences in disability data among the various years.

Description	1990	2000	2010 (ACS)	2017 (ACS)
Population 16 To 64 Years with a disability	61 (7.39%)	372 (12.83%)	(NA)	(NA)
Population 20 To 64 Years with a disability	(NA)	(NA)	(NA)	966 (8.27%)

### Income Trends



### Poverty and Public Assistance



## Educational Attainment Trends

Age 25 and Over

Description	1990	2000	2010 (ACS)	2017 (ACS)
Less than 9th Grade	27 (4.06%)	51 (2.54%)	159 (1.82%)	312 (2.57%)
9th to 12th Grade, No Diploma	110 (16.54%)	147 (7.32%)	516 (5.92%)	611 (5.04%)
High School Graduate or Higher	528 (79.40%)	1,811 (90.14%)	8,040 (92.25%)	11,199 (92.39%)
Bachelor's Degree or Higher	97 (14.59%)	382 (19.01%)	2,543 (29.18%)	3,693 (30.47%)

## Language Trends

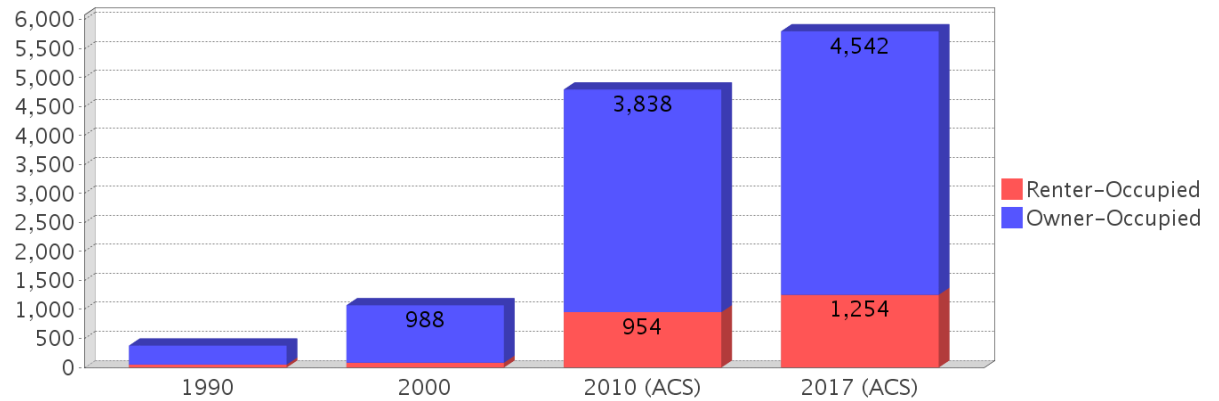
Age 5 and Over

Description	1990	2000	2010 (ACS)	2017 (ACS)
Speaks English Well	3 (0.28%)	78 (2.59%)	444 (3.13%)	793 (4.26%)
Speaks English Not Well	NA (NA)	11 (0.37%)	113 (0.80%)	258 (1.39%)
Speaks English Not at All	NA (NA)	7 (0.23%)	23 (0.16%)	446 (2.40%)
Speaks English Not Well or Not at All	4 (0.37%)	18 (0.60%)	136 (0.96%)	704 (3.78%)

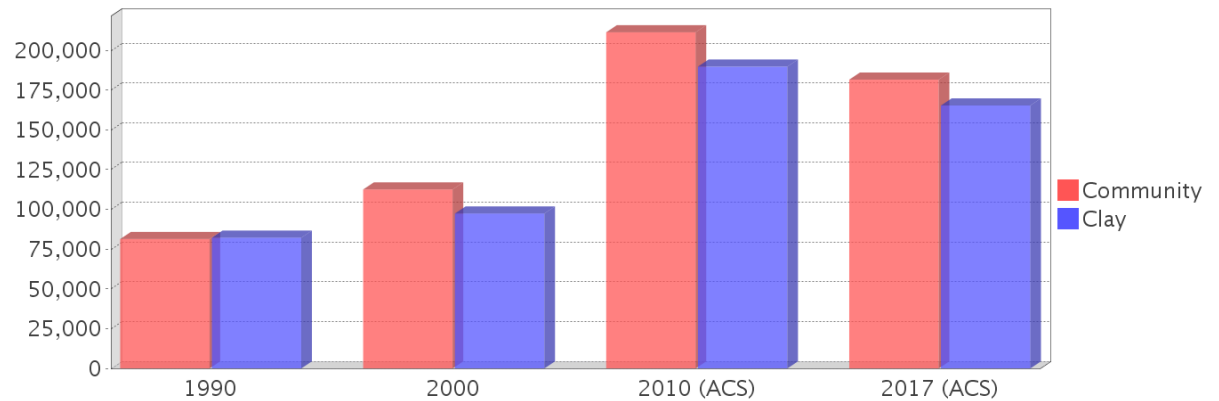
## Housing Trends

Description	1990	2000	2010 (ACS)	2017 (ACS)
Total	389	1,117	5,235	6,088
Units per Acre	0.04	0.11	0.95	1.10
Single-Family Units	236	968	4,827	5,690
Multi-Family Units	0	7	257	304
Mobile Home Units	136	142	156	94
Owner-Occupied Units	325	988	3,838	4,542
Renter-Occupied Units	50	82	954	1,254
Vacant Units	14	47	442	292
Median Housing Value	\$81,300	\$112,500	\$211,300	\$181,500
Occupied Housing Units w/No Vehicle	15 (4.00%)	23 (2.15%)	38 (0.79%)	87 (1.50%)

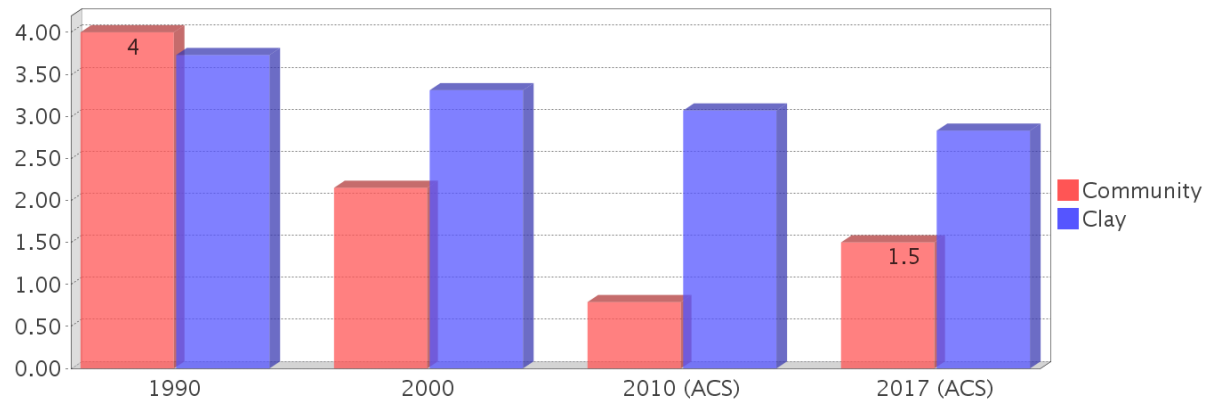
## Housing Tenure



## Median Housing Value Comparison

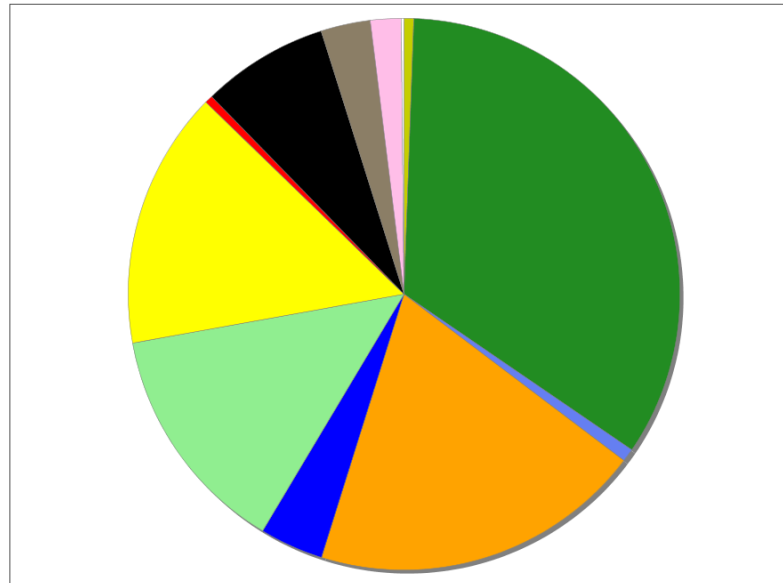


## Occupied Units With No Vehicles Available



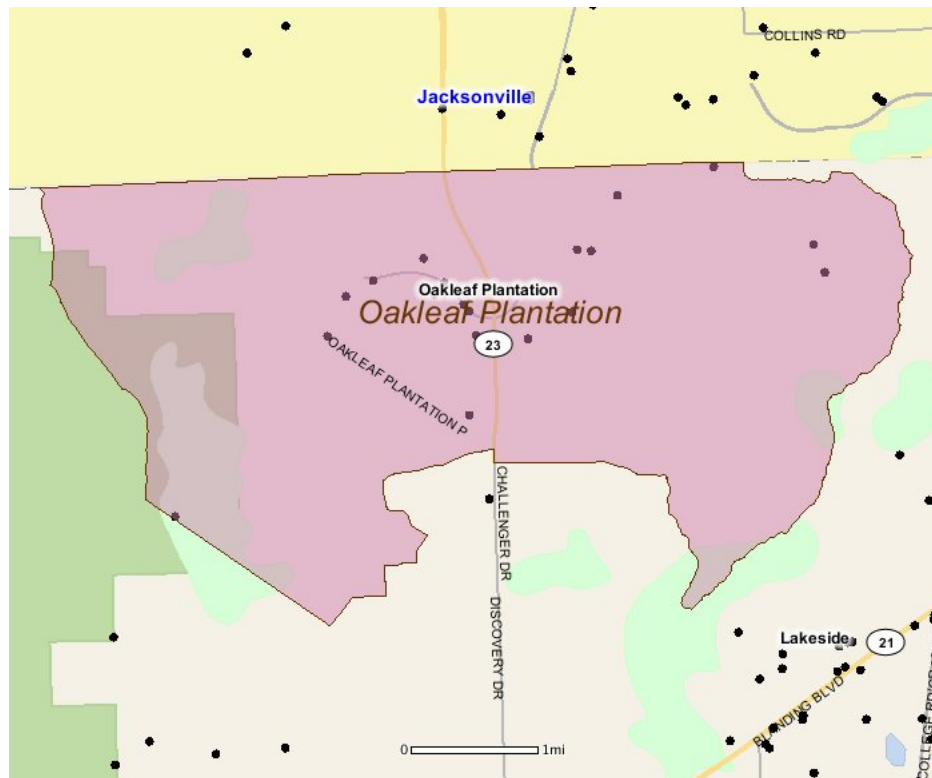
## Existing Land Use

Land Use Type	Acres	Percentage
Acreage Not Zoned For Agriculture	58	0.55%
Agricultural	3,415	32.17%
Centrally Assessed	0	0.00%
Industrial	0	0.00%
Institutional	76	0.72%
Mining	0	0.00%
Other	1,963	18.49%
Public/Semi-Public	375	3.53%
Recreation	1,367	12.88%
Residential	1,518	14.30%
Retail/Office	46	0.43%
Row	746	7.03%
Vacant Residential	292	2.75%
Vacant Nonresidential	179	1.69%
Water	0	0.00%
Parcels With No Values	18	0.17%



- Acreage Not Zoned For Agriculture
- Agricultural
- Centrally Assessed
- Industrial
- Institutional
- Mining
- Other
- Public/Semi-Public
- Recreation
- Residential
- Retail/Office
- Row
- Vacant Residential
- Vacant Nonresidential
- Water
- Parcels With No Values

## Location Maps



---

## Community Facilities

The community facilities information below is useful in a variety of ways for environmental evaluations. These community resources should be evaluated for potential sociocultural effects, such as accessibility and relocation potential. The facility types may indicate the types of population groups present in the project study area. Facility staff and leaders can be sources of community information such as who uses the facility and how it is used. Additionally, community facilities are potential public meeting venues.

### Fire Stations (Points)

Facility Name	Address	Zip Code
ARGYLE FIRE DEPARTMENT AND RESCUE STATION 26	4030 IVORY CROSSING	32068

### Florida Parks and Recreational Facilities (Points)

Facility Name	Address	Zip Code
JENNINGS STATE FOREST - POWER LINE ROAD & WILDLIFE OBSERVATION TOWER TRAILHEAD	POWER LINE RD	32068
OAKLEAF COMMUNITY PARK	3979 PLANTATION OAKS	32065
DEERFIELD POINT PARK	DEERFIELD POINTE DR	32073

### Healthcare Facilities (Geocoded)

Facility Name	Address	Zip Code
UNIV. OF FL FAMILY MEDICINE AND PEDIATRIC CENTER A	4215 PLANTATION OAKS BOULEVARD	32065
FAMILY FIRST PRIMARY CARE P.A.	1075 OAKLEAF PLANTATION PARKWAY, SUITE 108	32065

### Public and Private Schools (Points)

Facility Name	Address	Zip Code
ARGYLE ELEMENTARY SCHOOL	2625 SPENCER PLANTATION BLVD	32073
OAKLEAF VILLAGE ELEMENTARY SCHOOL	410 OAKLEAF VILLAGE PKWY	32065
PLANTATION OAKS ELEMENTARY SCHOOL	4150 PLANTATION OAKS BLVD	32065
OAKLEAF JUNIOR HIGH	4085 PLANTATION OAKS BLVD	32068
OAKLEAF HIGH SCHOOL	4035 PLANTATION OAKS BLVD	32068

### Religious Centers (Points)

Facility Name	Address	Zip Code
OAKLEAF BAPTIST CHURCH	800 OAKLEAF PLANTATION PARKWAY	32065

### US Census Places

Facility Name
Jacksonville
Lakeside
Oakleaf Plantation

---

## Block Groups

The following Census Block Groups were used to calculate demographics for this report.

### 1990 Census Block Groups

120310136979, 120310137229, 120190309001, 120190302001

### 2000 Census Block Groups

120310136009, 120310137231, 120190309011, 120190303011, 120310137242, 120190302001

### 2010 Census Block Groups

120190309033, 120310137272, 120190309041, 120190302032, 120190309043, 120190303013, 120310173002, 120190302031, 120190302011

### 2017 Census Block Groups

120190302031, 120310137272, 120190303013, 120190302011, 120190309041, 120310173002, 120190309033, 120190302032, 120190309043

---

## Data Sources

### Area

The geographic area of the community based on a user-specified community boundary or area of interest (AOI) boundary.

### Jurisdiction

Jurisdiction(s) includes local government boundaries that intersect the community or AOI boundary.

### Demographic Data

Demographic data reported under the headings General Population Trends, Race and Ethnicity Trends, Age Trends, Income Trends, Educational Attainment Trends, Language Trends, and Housing Trends is from the U.S. Decennial Census (1990, 2000) and the American Community Survey (ACS) 5-year estimates from 2006-2010 and 2013-2017. The data was gathered at the block group level for user-specified community boundaries and AOIs, and at the county level for counties. Depending on the dataset, the data represents 100% counts (Census Summary File 1) or sample-based information (Census Summary File 3 or ACS).

### About the Census Data:

User-specified community boundaries and AOIs do not always correspond precisely to block group boundaries. In these instances, adjustment of the geographic area and data for affected block groups is required to estimate the actual population. To improve the accuracy of such estimates in the SDR report, the census block group data was adjusted to exclude all census blocks with a population of two or fewer. These areas were eliminated from the corresponding years' block groups. Next, the portion of the block group that lies outside of the community or AOI boundary was removed. The demographics within each block group were then recalculated, assuming an equal area distribution of the population. Note that there may be areas where there is no population.

Use caution when comparing the 100% count data (Decennial Census) to the sample-based data (ACS). In any given year, about one in 40 or 2.5% of U.S. households will receive the ACS questionnaire. Over any five-year period, about one in eight households will receive the questionnaire, as compared to about one in six that received the long form questionnaire for the Decennial Census 2000. (Source: <http://mcdc.missouri.edu/pub/data/acs/Readme.shtml>) The U.S.

Census Bureau provides help with this process:

<https://www.census.gov/programs-surveys/acs/guidance/comparing-acs-data/2017.html>

Use caution when interpreting changes in Race and Ethnicity over time. Starting with the 2000 Decennial Census, respondents were given a new option of selecting one or more race categories. Also in 2000, the placement of the question about Hispanic origin changed, helping to increase responsiveness to the Hispanic-origin question. Because of these and other changes, the 1990 data on race and ethnicity are not directly comparable with data from later censuses. (Source: <http://www.census.gov/prod/2001pubs/c2kbr01-1.pdf>;  
<http://www.census.gov/pred/www/rpts/Race%20and%20Ethnicity%20FINAL%20report.pdf>)

The "Minority" calculations are derived from Census and ACS data using both the race and ethnicity responses. On this report, "Minority" refers to individuals who list a race other than White and/or list their ethnicity as Hispanic/Latino. In other words, people who are multi-racial, any single race other than White, or Hispanic/Latino of any race are considered minorities.

Disability data is not included in the 2010 Decennial Census, or the 2006-2010 ACS. This data is available in the 2013-2017 ACS.

Because of changes made to the Census and ACS questions between 1990 and 2017, disability variables should not be compared from year to year. For example: 1) With the 1990 data the disabilities are listed as a "work disability" while this distinction is not made with 2000 or 2017 ACS data; 2) The 2017 ACS data includes the institutionalized population (e.g. persons in prisons and group homes), while this population is not included in 1990 or 2000; 3) the age groupings changed over the years.

Please take the following two concerns into account when viewing this data: 1) With the 1990 data the disabilities are listed as a "work disability" while this distinction is not made with 2000 or 2017 ACS data; 2) The 2017 ACS data includes the institutionalized population (e.g. persons in prisons and group homes), while this population is not included in 1990 or 2000.

The category Bachelor's Degree or Higher under the heading Educational Attainment Trends is a subset of the category High School Graduate or Higher.

Income of households. This includes the income of the householder and all other individuals 15 years old and over in the household, whether they are related to the householder or not. Because many households consist of only one person, average household income is usually less than average family income.

Income of families. In compiling statistics on family income, the incomes of all members 15 years old and over related to the householder are summed and treated as a single amount.

Age Trends median age for 1990 is not available.

### **Land Use Data**

The Land Use information Indicates acreages and percentages for the generalized land use types used to group parcel-specific, existing land use assigned by the county property appraiser office according to the Florida Department of Revenue land use codes.

### **Community Facilities Data**

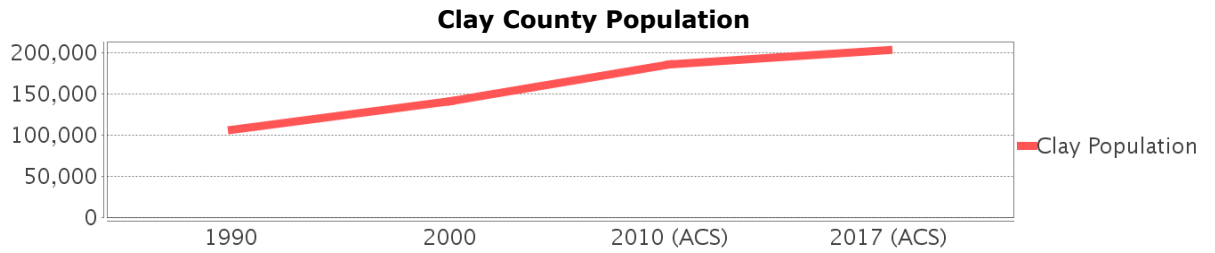
- Assisted Rental Housing Units - Identifies multifamily rental developments that receive funding assistance under federal, state, and local government programs to offer affordable housing as reported by the Shimberg Center for Housing Studies, University of Florida.
- Mobile Home Parks - Identifies approved or acknowledged mobile home parks reported by the Florida Department of Business and Professional Regulation and Florida Department of Health.

- Migrant Camps - Identifies migrant labor camp facilities inspected by the Florida Department of Health.
- Group Care Facilities - Identifies group care facilities inspected by the Florida Department of Health.
- Community Center and Fraternal Association Facilities - Identifies facilities reported by multiple sources.
- Law Enforcement Correctional Facilities - Identifies facilities reported by multiple sources.
- Cultural Centers - Identifies cultural centers including organizations, buildings, or complexes that promote culture and arts (e.g., aquariums and zoological facilities; arboreta and botanical gardens; dinner theaters; drive-ins; historical places and services; libraries; motion picture theaters; museums and art galleries; performing arts centers; performing arts theaters; planetariums; studios and art galleries; and theater producers stage facilities) reported by multiple sources.
- Fire Department and Rescue Station Facilities - Identifies facilities reported by multiple sources.
- Government Buildings - Identifies local, state, and federal government buildings reported by multiple sources.
- Health Care Facilities - Identifies health care facilities including abortion clinics, dialysis clinics, medical doctors, nursing homes, osteopaths, state laboratories/clinics, and surgicenters/walk-in clinics reported by the Florida Department of Health.
- Hospital Facilities - Identifies hospital facilities reported by multiple sources.
- Law Enforcement Facilities - Identifies law enforcement facilities reported by multiple sources.
- Parks and Recreational Facilities - Identifies parks and recreational facilities reported by multiple sources.
- Religious Center Facilities - Identifies religious centers including churches, temples, synagogues, mosques, chapels, centers, and other types of religious facilities reported by multiple sources.
- Private and Public Schools - Identifies private and public schools reported by multiple sources.
- Social Service Centers - Identifies social service centers reported by multiple sources.
- Veteran Organizations and Facilities

# Clay County Demographic Profile

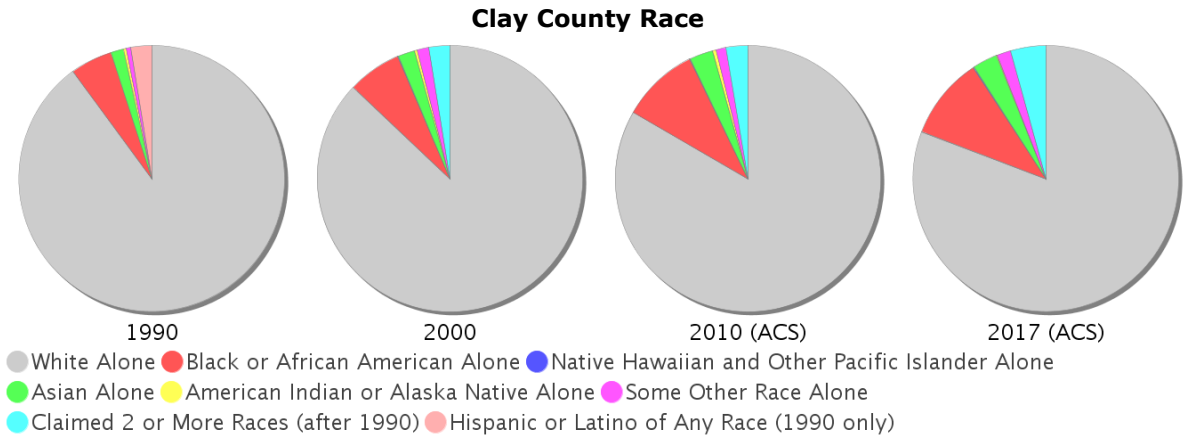
## General Population Trends - Clay

Description	1990	2000	2010 (ACS)	2017 (ACS)
Total Population	105,986	140,814	186,076	203,291
Total Households	36,663	50,243	67,493	71,939
Average Persons per Acre	0.257	0.342	0.452	0.494
Average Persons per Household	2.891	2.764	3.00	2.81
Average Persons per Family	3.233	3.168	3.183	3.293
Males	52,272	69,134	91,200	100,119
Females	53,714	71,680	94,876	103,172



## Race and Ethnicity Trends - Clay

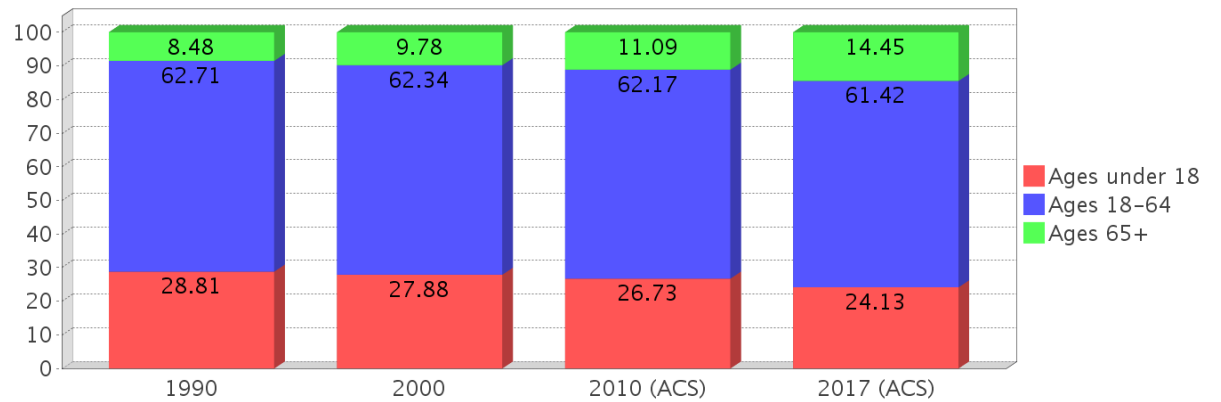
Description	1990	2000	2010 (ACS)	2017 (ACS)
White Alone	97,691 (92.17%)	122,583 (87.05%)	155,042 (83.32%)	164,223 (80.78%)
Black or African American Alone	5,513 (5.20%)	9,165 (6.51%)	17,586 (9.45%)	20,298 (9.98%)
Native Hawaiian and Other Pacific Islander Alone	(NA)	89 (0.06%)	119 (0.06%)	172 (0.08%)
Asian Alone	1,702 (1.61%)	2,901 (2.06%)	5,348 (2.87%)	6,145 (3.02%)
American Indian or Alaska Native Alone	367 (0.35%)	470 (0.33%)	749 (0.40%)	260 (0.13%)
Some Other Race Alone	635 (0.60%)	2,028 (1.44%)	2,230 (1.20%)	3,406 (1.68%)
Claimed 2 or More Races	(NA)	3,578 (2.54%)	5,002 (2.69%)	8,787 (4.32%)
Hispanic or Latino of Any Race	2,764 (2.61%)	6,181 (4.39%)	13,395 (7.20%)	18,890 (9.29%)
Not Hispanic or Latino	103,222 (97.39%)	134,633 (95.61%)	172,681 (92.80%)	184,401 (90.71%)
Minority	43,608 (41.15%)	21,518 (15.28%)	43,608 (23.44%)	52,527 (25.84%)



### Age Trends - Clay

Description	1990	2000	2010 (ACS)	2017 (ACS)
Under Age 5	7.57%	6.46%	6.32%	5.60%
Ages 5-17	21.24%	21.42%	20.41%	18.52%
Ages 18-21	5.60%	4.81%	5.01%	5.27%
Ages 22-29	12.16%	8.89%	9.02%	9.26%
Ages 30-39	17.37%	15.80%	13.42%	11.96%
Ages 40-49	15.17%	16.54%	15.90%	14.21%
Ages 50-64	12.42%	16.29%	18.82%	20.72%
Age 65 and Over	8.48%	9.78%	11.09%	14.45%
-Ages 65-74	5.19%	5.58%	6.62%	9.16%
-Ages 75-84	2.47%	3.33%	3.44%	4.05%
-Age 85 and Over	0.82%	0.87%	1.03%	1.24%
Median Age	NA	36	38	39

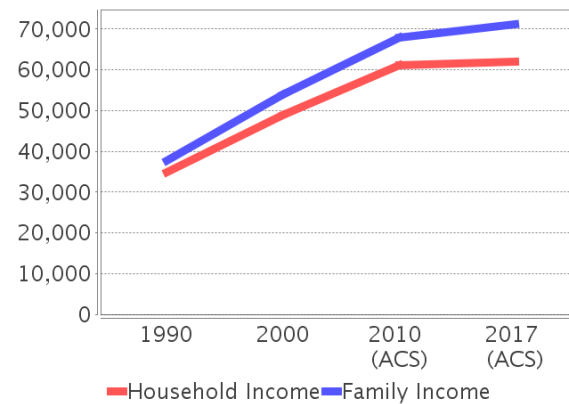
### Percentage Population by Age Group - Clay



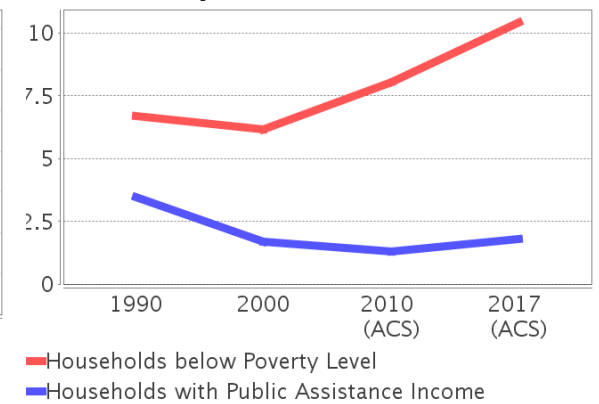
### Income Trends - Clay

Description	1990	2000	2010 (ACS)	2017 (ACS)
Median Household Income	\$34,860	\$48,854	\$61,185	\$61,971
Median Family Income	\$37,779	\$53,814	\$67,922	\$71,173
Population below Poverty Level	7.09%	6.78%	8.55%	10.42%
Households below Poverty Level	6.68%	6.16%	8.05%	10.41%
Households with Public Assistance Income	3.48%	1.69%	1.31%	1.79%

### Income Trends



### Poverty and Public Assistance



### Disability Trends - Clay

See the Data Sources section below for an explanation about the differences in disability data among the various years.

Description	1990	2000	2010 (ACS)	2017 (ACS)
Population 16 To 64 Years with a disability	5,492 (7.47%)	16,630 (12.97%)	NA (NA)	NA (NA)
Population 20 To 64 Years with a disability	NA (NA)	NA (NA)	NA (NA)	13,335 (11.18%)

## Educational Attainment Trends - Clay

Age 25 and Over

Description	1990	2000	2010 (ACS)	2017 (ACS)
Less than 9th Grade	3,812 (5.83%)	2,900 (3.21%)	2,962 (2.46%)	3,552 (2.59%)
9th to 12th Grade, No Diploma	8,514 (13.02%)	9,397 (10.40%)	8,695 (7.22%)	8,627 (6.28%)
High School Graduate or Higher	53,064 (81.15%)	78,085 (86.39%)	108,834 (90.33%)	125,175 (91.13%)
Bachelor's Degree or Higher	11,716 (17.92%)	18,159 (20.09%)	28,701 (23.82%)	32,556 (23.70%)

## Language Trends - Clay

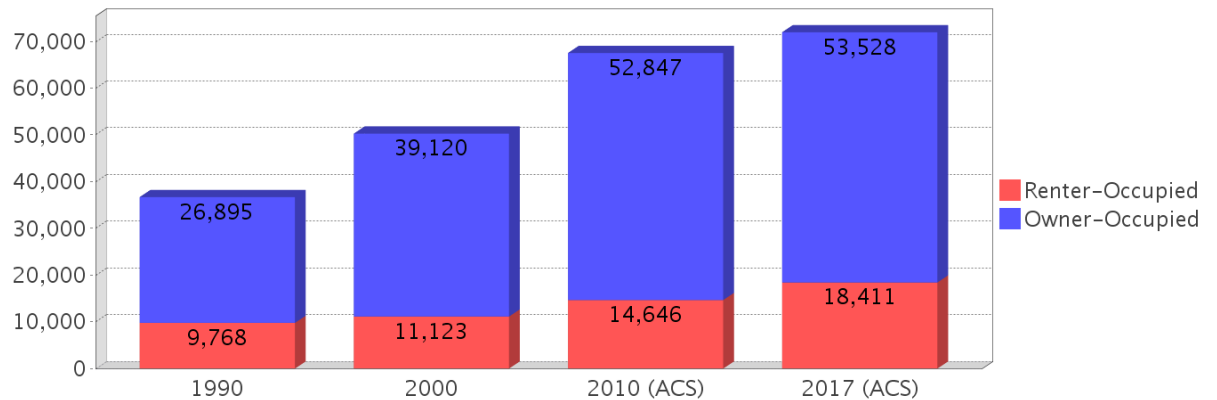
Age 5 and Over

Description	1990	2000	2010 (ACS)	2017 (ACS)
Speaks English Well	1,025 (1.04%)	1,777 (1.35%)	2,993 (1.72%)	2,956 (1.54%)
Speaks English Not Well	NA (NA)	829 (0.63%)	1,827 (1.05%)	2,331 (1.21%)
Speaks English Not at All	NA (NA)	128 (0.10%)	421 (0.24%)	949 (0.49%)
Speaks English Not Well or Not at All	534 (0.54%)	957 (0.73%)	2,248 (1.29%)	3,280 (1.71%)

## Housing Trends - Clay

Description	1990	2000	2010 (ACS)	2017 (ACS)
Total	40,249	53,748	73,799	78,815
Units per Acre	0.098	0.13	0.179	0.191
Single-Family Units	24,747	37,998	56,086	59,407
Multi-Family Units	5,264	6,394	7,837	9,224
Mobile Home Units	6,502	9,231	9,832	10,168
Owner-Occupied Units	26,895	39,120	52,847	53,528
Renter-Occupied Units	9,768	11,123	14,646	18,411
Vacant Units	3,586	3,505	6,306	6,876
Median Housing Value	\$82,200	\$97,400	\$189,700	\$165,300
Occupied Housing Units w/No Vehicle	1,369 (3.73%)	1,661 (3.31%)	2,073 (3.07%)	2,039 (2.83%)

## Housing Tenure - Clay



---

## County Data Sources

Demographic data reported is from the U.S. Decennial Census (1990, 2000) and the American Community Survey (ACS) 5-year estimates from 2006-2010 and 2013-2017. The data was gathered at the county level. Depending on the dataset, the data represents 100% counts (Census Summary File 1) or sample-based information (Census Summary File 3 or ACS).

### About the Census Data:

Use caution when comparing the 100% count data (Decennial Census) to the sample-based data (ACS). In any given year, about one in 40 or 2.5% of U.S. households will receive the ACS questionnaire. Over any five-year period, about one in eight households will receive the questionnaire, as compared to about one in six that received the long form questionnaire for the Decennial Census 2000. (Source: <http://mcdc.missouri.edu/pub/data/acs/Readme.shtml>) The U.S. Census Bureau provides help with this process:

<https://www.census.gov/programs-surveys/acs/guidance/comparing-acs-data/2017.html>

Use caution when interpreting changes in Race and Ethnicity over time. Starting with the 2000 Decennial Census, respondents were given a new option of selecting one or more race categories. Also in 2000, the placement of the question about Hispanic origin changed, helping to increase responsiveness to the Hispanic-origin question. Because of these and other changes, the 1990 data on race and ethnicity are not directly comparable with data from later censuses. (Source: <http://www.census.gov/prod/2001pubs/c2kbr01-1.pdf>; <http://www.census.gov/pred/www/rpts/Race%20and%20Ethnicity%20FINAL%20report.pdf>)

The "Minority" calculations are derived from Census and ACS data using both the race and ethnicity responses. On this report, "Minority" refers to individuals who list a race other than White and/or list their ethnicity as Hispanic/Latino. In other words, people who are multi-racial, any single race other than White, or Hispanic/Latino of any race are considered minorities.

Disability data is not included in the 2010 Decennial Census, or the 2006-2010 ACS. This data is available in the 2013-2017 ACS.

Because of changes made to the Census and ACS questions between 1990 and 2017, disability variables should not be compared from year to year. For example: 1) With the 1990 data the disabilities are listed as a "work disability" while this distinction is not made with 2000 or 2017 ACS data; 2) The 2017 ACS data includes the institutionalized population (e.g. persons in prisons and group homes), while this population is not included in 1990 or 2000; 3) the age groupings changed over the years.

Please take the following two concerns into account when viewing this data: 1) With the 1990 data the disabilities are listed as a "work disability" while this distinction is not made with 2000 or 2017 ACS data; 2) The 2017 ACS data includes the institutionalized population (e.g. persons in prisons and group homes), while this population is not included in 1990 or 2000.

source:

<https://www.census.gov/people/disability/methodology/acs.html>

<https://www.census.gov/population/www/cen2000/90vs00/index.html>

The category Bachelor's Degree or Higher under the heading Educational Attainment Trends is a subset of the category High School Graduate or Higher.

---

## Metadata

- Community and Fraternal Centers [https://etdmpub.florida-etat.org/metadata/gc\\_communitycenter.htm](https://etdmpub.florida-etat.org/metadata/gc_communitycenter.htm)
- Correctional Facilities in Florida [https://etdmpub.florida-etat.org/metadata/gc\\_correctional.htm](https://etdmpub.florida-etat.org/metadata/gc_correctional.htm)
- Cultural Centers in Florida [https://etdmpub.florida-etat.org/metadata/gc\\_culturecenter.htm](https://etdmpub.florida-etat.org/metadata/gc_culturecenter.htm)
- Fire Department and Rescue Station Facilities in Florida [https://etdmpub.florida-etat.org/metadata/gc\\_firestat.htm](https://etdmpub.florida-etat.org/metadata/gc_firestat.htm)
- Local, State, and Federal Government Buildings in Florida [https://etdmpub.florida-etat.org/metadata/gc\\_govbuild.htm](https://etdmpub.florida-etat.org/metadata/gc_govbuild.htm)
- Florida Health Care Facilities [https://etdmpub.florida-etat.org/metadata/gc\\_health.htm](https://etdmpub.florida-etat.org/metadata/gc_health.htm)
- Hospital Facilities in Florida [https://etdmpub.florida-etat.org/metadata/gc\\_hospitals.htm](https://etdmpub.florida-etat.org/metadata/gc_hospitals.htm)
- Law Enforcement Facilities in Florida [https://etdmpub.florida-etat.org/metadata/gc\\_lawenforce.htm](https://etdmpub.florida-etat.org/metadata/gc_lawenforce.htm)
- Florida Parks and Recreational Facilities [https://etdmpub.florida-etat.org/metadata/gc\\_parks.htm](https://etdmpub.florida-etat.org/metadata/gc_parks.htm)
- Religious Centers [https://etdmpub.florida-etat.org/metadata/gc\\_religion.htm](https://etdmpub.florida-etat.org/metadata/gc_religion.htm)
- Florida Public and Private Schools [https://etdmpub.florida-etat.org/metadata/gc\\_schools.htm](https://etdmpub.florida-etat.org/metadata/gc_schools.htm)
- Social Service Centers [https://etdmpub.florida-etat.org/metadata/gc\\_socialservice.htm](https://etdmpub.florida-etat.org/metadata/gc_socialservice.htm)
- Assisted Rental Housing Units in Florida [https://etdmpub.florida-etat.org/metadata/gc\\_assisted\\_housing.htm](https://etdmpub.florida-etat.org/metadata/gc_assisted_housing.htm)
- Group Care Facilities <https://etdmpub.florida-etat.org/metadata/groupcare.htm>
- Mobile Home Parks in Florida [https://etdmpub.florida-etat.org/metadata/gc\\_mobilehomes.htm](https://etdmpub.florida-etat.org/metadata/gc_mobilehomes.htm)
- Migrant Camps in Florida <https://etdmpub.florida-etat.org/metadata/migrant.htm>
- Veteran Organizations and Facilities [https://etdmpub.florida-etat.org/metadata/gc\\_veterans.htm](https://etdmpub.florida-etat.org/metadata/gc_veterans.htm)
- Generalized Land Use - Florida DOT District 2 [https://etdmpub.florida-etat.org/metadata/d2\\_lu\\_gen.htm](https://etdmpub.florida-etat.org/metadata/d2_lu_gen.htm)
- Census Block Groups in Florida [https://etdmpub.florida-etat.org/metadata/e2\\_cenacs\\_cci.htm](https://etdmpub.florida-etat.org/metadata/e2_cenacs_cci.htm)
- 1990 Census Block Groups in Florida [https://etdmpub.florida-etat.org/metadata/e2\\_cenblkgrp\\_1990\\_cci.htm](https://etdmpub.florida-etat.org/metadata/e2_cenblkgrp_1990_cci.htm)
- 2000 Census Block Groups in Florida [https://etdmpub.florida-etat.org/metadata/e2\\_cenblkgrp\\_2000\\_cci.htm](https://etdmpub.florida-etat.org/metadata/e2_cenblkgrp_2000_cci.htm)
- 2010 Census Block Groups in Florida [https://etdmpub.florida-etat.org/metadata/e2\\_cenblkgrp\\_2010\\_cci.htm](https://etdmpub.florida-etat.org/metadata/e2_cenblkgrp_2010_cci.htm)