

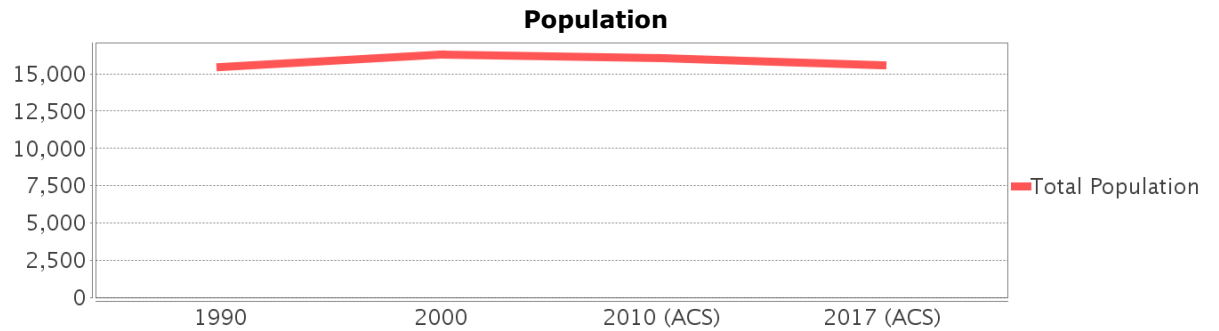
Sociocultural Data Report

Pinewood

Area: 1.897 square miles
Jurisdiction(s): Cities: NA
 Counties: Miami-dade

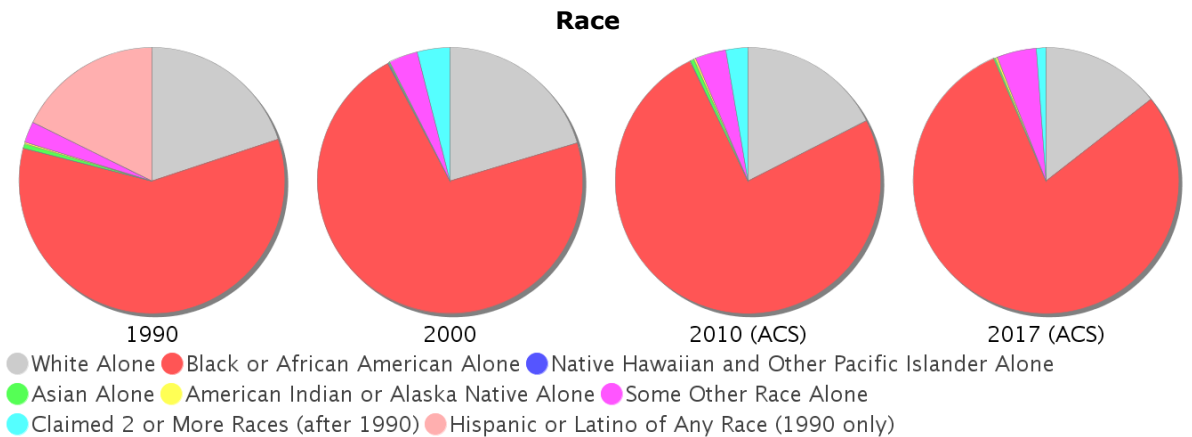
General Population Trends

| Description | 1990 | 2000 | 2010 (ACS) | 2017 (ACS) |
|-------------------------------|--------|--------|------------|------------|
| Total Population | 15,445 | 16,284 | 16,039 | 15,576 |
| Total Households | 4,875 | 4,933 | 4,920 | 4,605 |
| Average Persons per Acre | 14.07 | 13.91 | 14.83 | 15.26 |
| Average Persons per Household | 3.44 | 3.43 | 3.43 | 3.62 |
| Average Persons per Family | 4.03 | 4.01 | 3.86 | 4.45 |
| Males | 7,413 | 7,760 | 7,729 | 7,432 |
| Females | 8,032 | 8,524 | 8,310 | 8,143 |

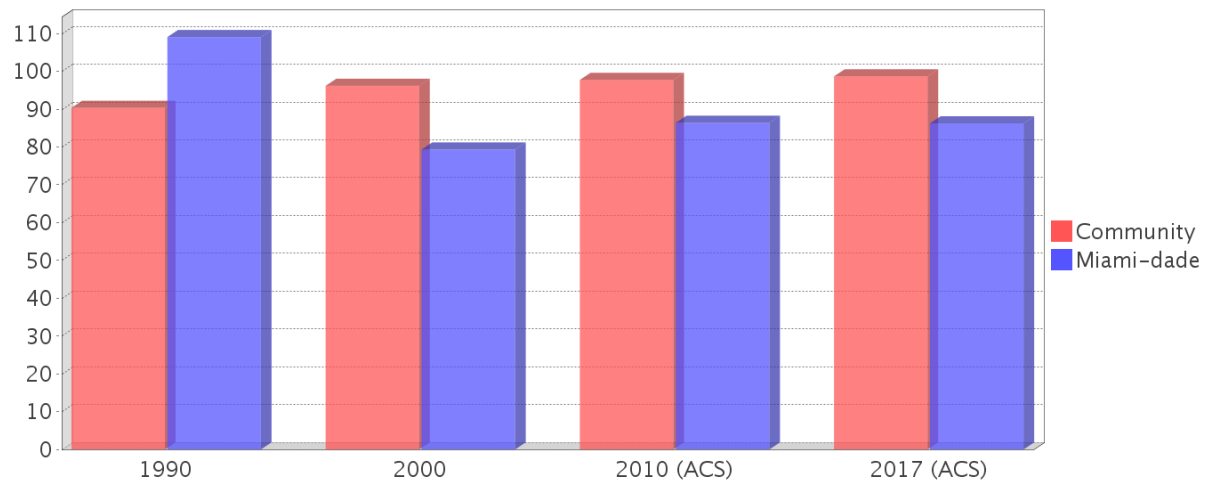


Race and Ethnicity Trends

| Description | 1990 | 2000 | 2010 (ACS) | 2017 (ACS) |
|--|-----------------|-----------------|-----------------|-----------------|
| White Alone | 3,740 (24.21%) | 3,324 (20.41%) | 2,819 (17.58%) | 2,256 (14.48%) |
| Black or African American Alone | 11,077 (71.72%) | 11,700 (71.85%) | 12,062 (75.20%) | 12,314 (79.06%) |
| Native Hawaiian and Other Pacific Islander Alone | 7 (0.05%) | 15 (0.09%) | 8 (0.05%) | 0 (0.00%) |
| Asian Alone | 94 (0.61%) | 29 (0.18%) | 77 (0.48%) | 32 (0.21%) |
| American Indian or Alaska Native Alone | 42 (0.27%) | 0 (0.00%) | 40 (0.25%) | 46 (0.30%) |
| Some Other Race Alone | 485 (3.14%) | 570 (3.50%) | 598 (3.73%) | 744 (4.78%) |
| Claimed 2 or More Races | NA (NA) | 646 (3.97%) | 435 (2.71%) | 184 (1.18%) |
| Hispanic or Latino of Any Race | 3,330 (21.56%) | 3,617 (22.21%) | 3,672 (22.89%) | 3,290 (21.12%) |
| Not Hispanic or Latino | 12,115 (78.44%) | 12,667 (77.79%) | 12,367 (77.11%) | 12,286 (78.88%) |
| Minority | 13,953 (90.34%) | 15,661 (96.17%) | 15,677 (97.74%) | 15,371 (98.68%) |



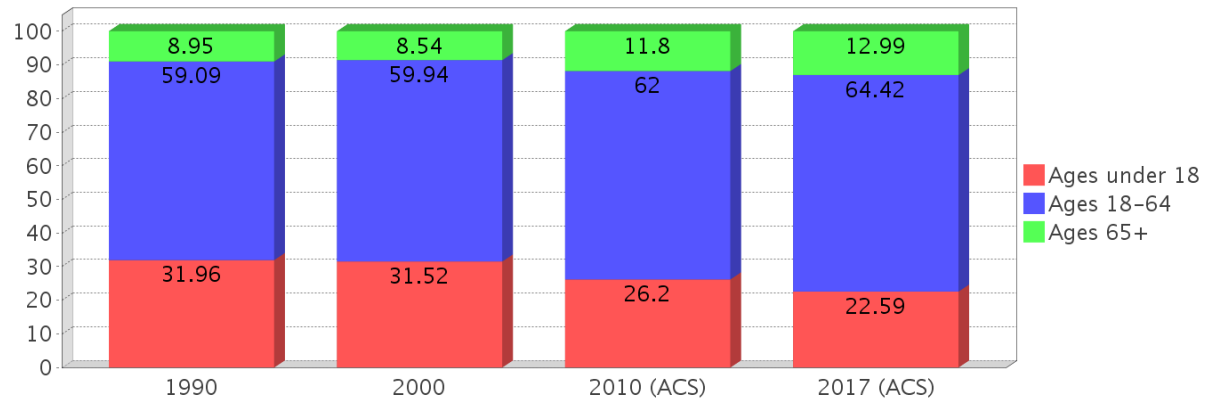
Minority Percentage Population



Age Trends

| Description | 1990 | 2000 | 2010 (ACS) | 2017 (ACS) |
|------------------|--------|--------|------------|------------|
| Under Age 5 | 9.50% | 7.78% | 7.48% | 6.84% |
| Ages 5-17 | 22.45% | 23.73% | 18.72% | 15.76% |
| Ages 18-21 | 5.90% | 7.34% | 6.93% | 6.75% |
| Ages 22-29 | 12.02% | 11.26% | 12.53% | 11.62% |
| Ages 30-39 | 17.02% | 12.83% | 11.65% | 13.60% |
| Ages 40-49 | 12.32% | 14.19% | 12.77% | 12.01% |
| Ages 50-64 | 11.83% | 14.31% | 18.11% | 20.45% |
| Age 65 and Over | 8.95% | 8.54% | 11.80% | 12.99% |
| -Ages 65-74 | 5.25% | 5.64% | 6.97% | 8.80% |
| -Ages 75-84 | 2.90% | 1.97% | 3.55% | 2.91% |
| -Age 85 and Over | 0.80% | 0.93% | 1.28% | 1.27% |
| Median Age | NA | 30 | 33 | 34 |

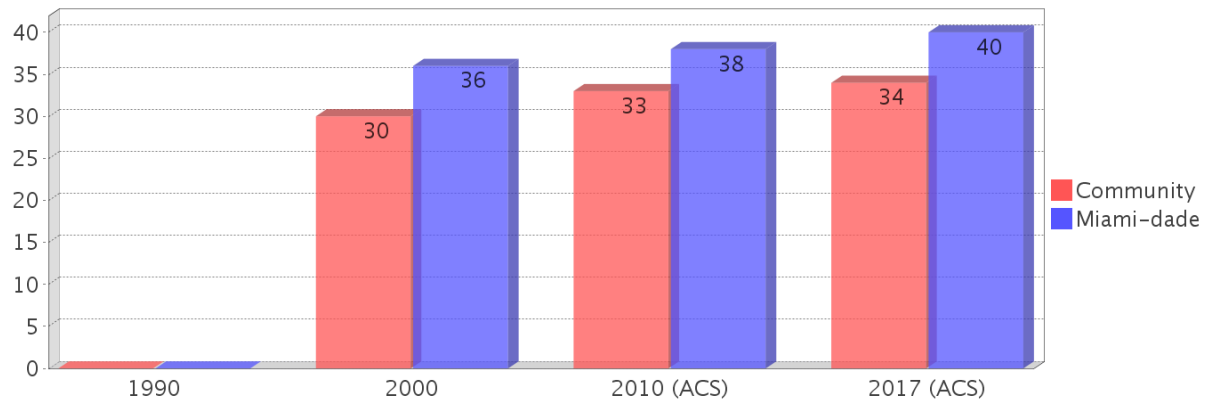
Percentage Population by Age Group



Income Trends

| Description | 1990 | 2000 | 2010 (ACS) | 2017 (ACS) |
|--|----------|----------|------------|------------|
| Median Household Income | \$23,214 | \$26,250 | \$31,960 | \$36,979 |
| Median Family Income | \$23,500 | \$28,000 | \$32,969 | \$36,694 |
| Population below Poverty Level | 25.90% | 32.94% | 34.92% | 24.06% |
| Households below Poverty Level | 27.08% | 30.49% | 33.64% | 27.49% |
| Households with Public Assistance Income | 15.26% | 10.32% | 2.78% | 2.65% |

Median Age Comparison

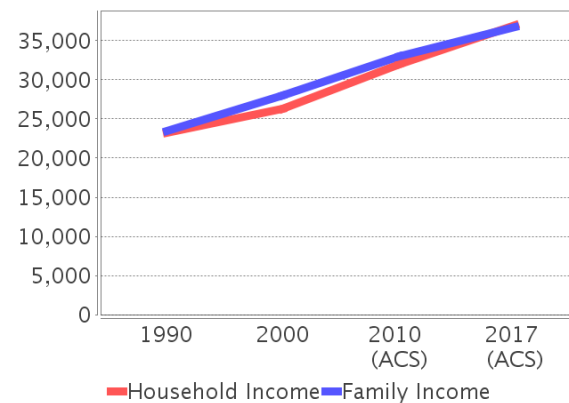


Disability Trends

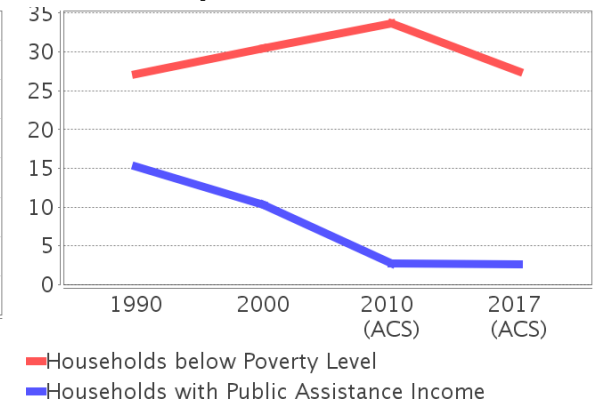
See the Data Sources section below for an explanation about the differences in disability data among the various years.

| Description | 1990 | 2000 | 2010 (ACS) | 2017 (ACS) |
|---|-------------|---------------|------------|-------------|
| Population 16 To 64 Years with a disability | 748 (6.85%) | 2978 (20.11%) | (NA) | (NA) |
| Population 20 To 64 Years with a disability | (NA) | (NA) | (NA) | 889 (9.34%) |

Income Trends



Poverty and Public Assistance



Educational Attainment Trends

Age 25 and Over

| Description | 1990 | 2000 | 2010 (ACS) | 2017 (ACS) |
|--------------------------------|-------------------|-------------------|-------------------|-------------------|
| Less than 9th Grade | 2,081 (22.90%) | 1,724 (18.76%) | 1,681 (17.72%) | 1,470 (14.15%) |
| 9th to 12th Grade, No Diploma | 2,569 (28.26%) | 2,874 (31.27%) | 1,412 (14.88%) | 1,313 (12.64%) |
| High School Graduate or Higher | 4,439 (48.84%) | 4,592 (49.97%) | 6,396 (67.40%) | 7,605 (73.21%) |
| Bachelor's Degree or Higher | 748 (8.23%) | 549 (5.97%) | 830 (8.75%) | 1,035 (9.96%) |

Language Trends

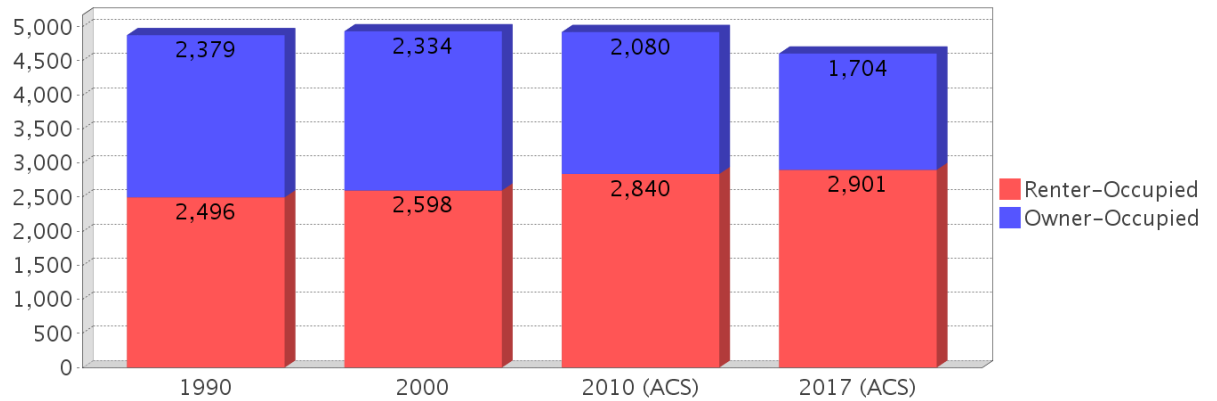
Age 5 and Over

| Description | 1990 | 2000 | 2010 (ACS) | 2017 (ACS) |
|---------------------------------------|-------------------|-------------------|-------------------|-------------------|
| Speaks English Well | 1,871 (13.32%) | 1,737 (11.57%) | 1,619 (11.31%) | 1,561 (10.76%) |
| Speaks English Not Well | NA (NA) | 1,689 (11.25%) | 1,668 (11.65%) | 1,531 (10.55%) |
| Speaks English Not at All | NA (NA) | 625 (4.16%) | 856 (5.98%) | 639 (4.40%) |
| Speaks English Not Well or Not at All | 1,904 (13.56%) | 2,314 (15.41%) | 2,524 (17.62%) | 2,170 (14.95%) |

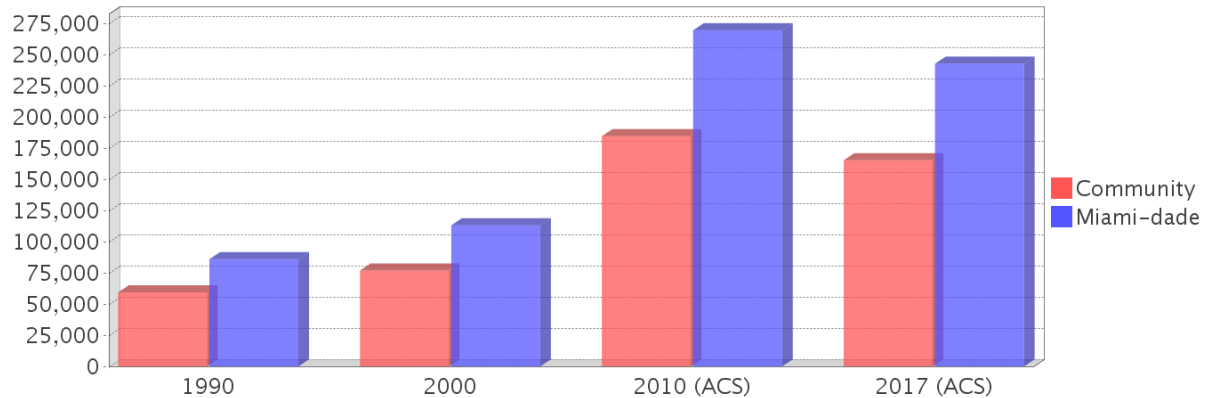
Housing Trends

| Description | 1990 | 2000 | 2010 (ACS) | 2017 (ACS) |
|-------------------------------------|-----------------|-------------------|-----------------|-----------------|
| Total | 5,304 | 5,203 | 5,330 | 5,186 |
| Units per Acre | 5.22 | 5.08 | 5.16 | 5.00 |
| Single-Family Units | 2,713 | 2,820 | 2,439 | 3,283 |
| Multi-Family Units | 1,684 | 2,015 | 2,612 | 1,882 |
| Mobile Home Units | 333 | 369 | 361 | 20 |
| Owner-Occupied Units | 2,379 | 2,334 | 2,080 | 1,704 |
| Renter-Occupied Units | 2,496 | 2,598 | 2,840 | 2,901 |
| Vacant Units | 429 | 271 | 411 | 580 |
| Median Housing Value | \$59,400 | \$76,900 | \$184,600 | \$165,300 |
| Occupied Housing Units w/No Vehicle | 806 (16.53%) | 1,006 (20.40%) | 954 (19.39%) | 796 (17.28%) |

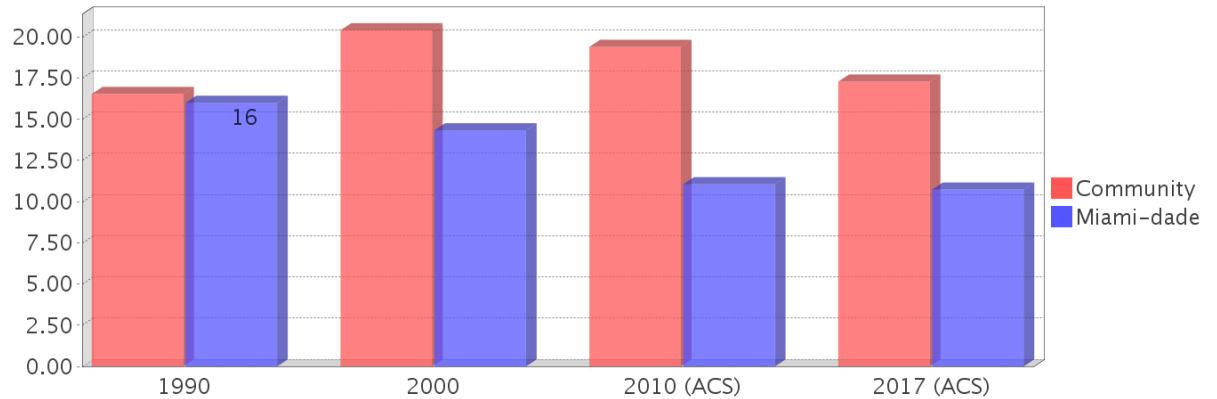
Housing Tenure



Median Housing Value Comparison

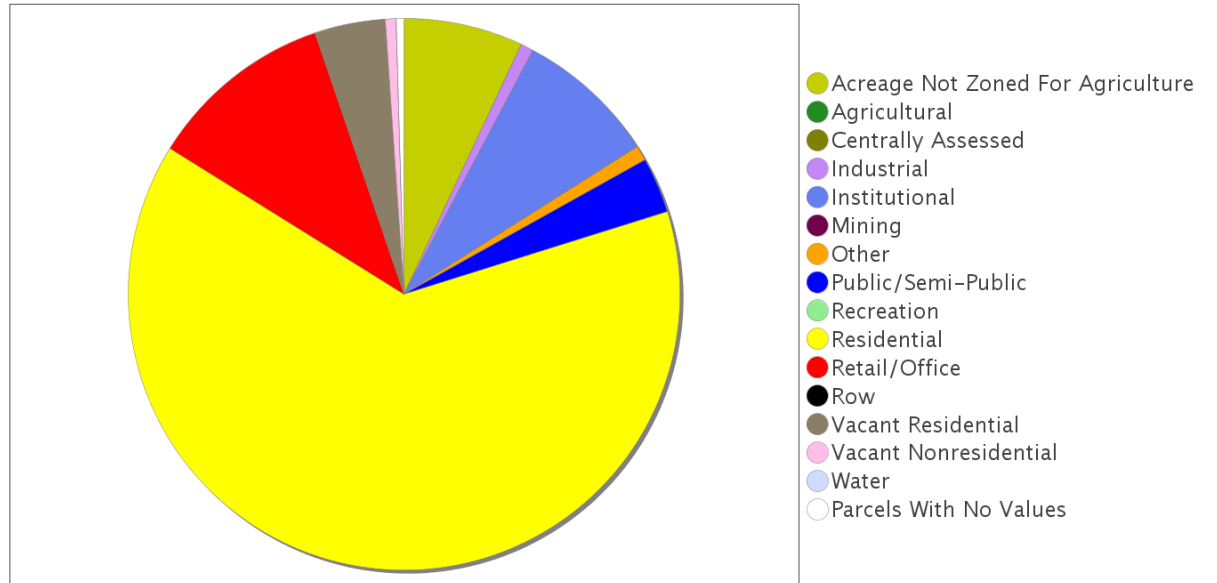


Occupied Units With No Vehicles Available

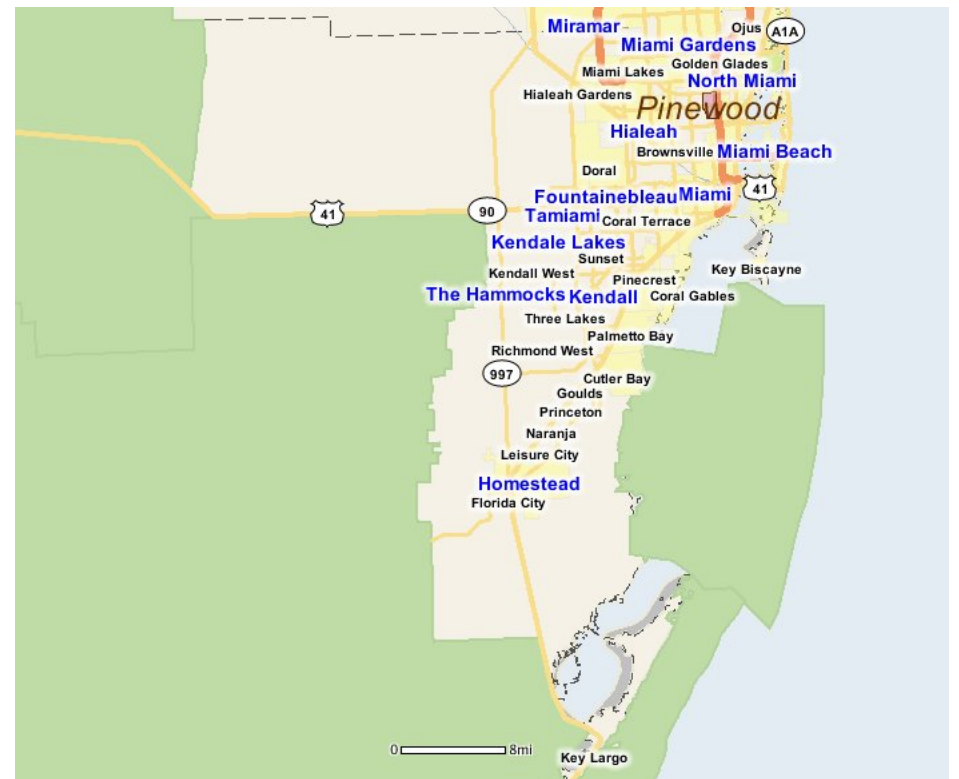
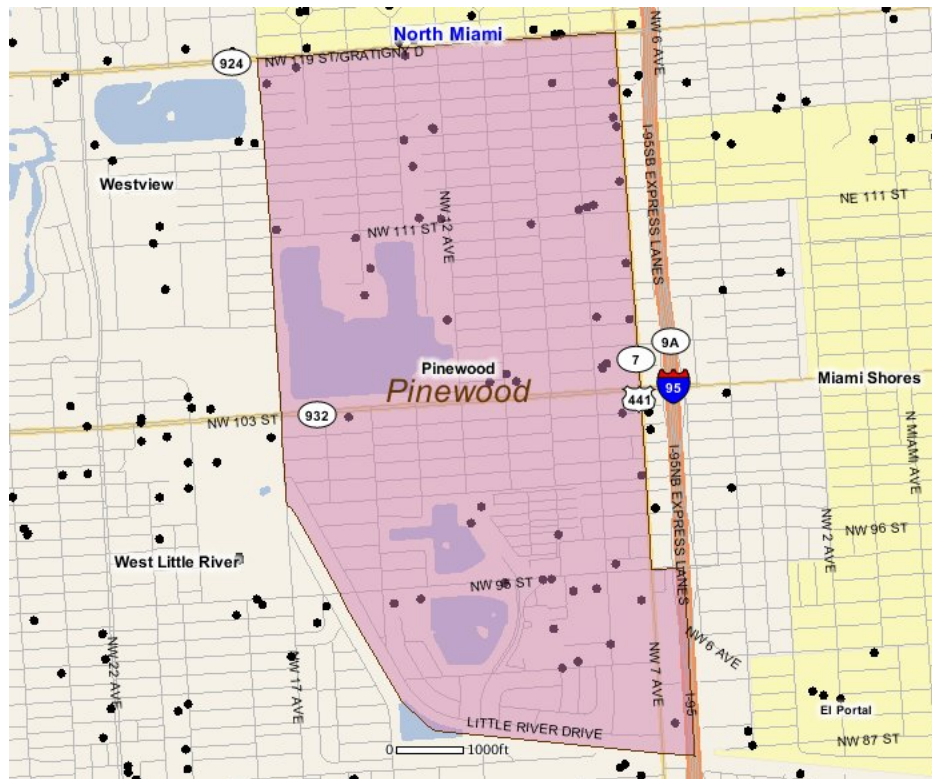


Existing Land Use

| Land Use Type | Acres | Percentage |
|-----------------------------------|-------|------------|
| Acreage Not Zoned For Agriculture | 64 | 5.27% |
| Agricultural | 0 | 0.00% |
| Centrally Assessed | 0 | 0.00% |
| Industrial | 7 | 0.58% |
| Institutional | 76 | 6.26% |
| Mining | 0 | 0.00% |
| Other | 8 | 0.66% |
| Public/Semi-Public | 30 | 2.47% |
| Recreation | 0 | 0.00% |
| Residential | 584 | 48.10% |
| Retail/Office | 100 | 8.24% |
| Row | 0 | 0.00% |
| Vacant Residential | 38 | 3.13% |
| Vacant Nonresidential | 6 | 0.49% |
| Water | 0 | 0.00% |
| Parcels With No Values | 4 | 0.33% |



Location Maps



Community Facilities

The community facilities information below is useful in a variety of ways for environmental evaluations. These community resources should be evaluated for potential sociocultural effects, such as accessibility and relocation potential. The facility types may indicate the types of population groups present in the project study area. Facility staff and leaders can be sources of community information such as who uses the facility and how it is used. Additionally, community facilities are potential public meeting venues.

Assisted Housing (Points)

| Facility Name | Address | Zip Code |
|--------------------------|----------------------|----------|
| ALHAMBRA COVE APARTMENTS | 1600 NW 119TH STREET | 33167 |

Community Centers (Points)

| Facility Name | Address | Zip Code |
|---------------------------|-------------------|----------|
| M W CYPRESS GRAND LODGE | 11785 NW 17TH AVE | 33167 |
| BOYS & GIRLS CLUB - MIAMI | 10915 NW 14TH AVE | 33167 |
| PALM TOWERS CENTER | 950 NW 95 ST | 33150 |

Florida Parks and Recreational Facilities (Points)

| Facility Name | Address | Zip Code |
|----------------------------|--------------------------|----------|
| TWIN LAKES PARK | NW 99TH ST & NW 12TH AVE | 33147 |
| MIAMI SHORES OPTIMIST CLUB | 10915 NW 14TH AVE | 33167 |
| GRATIGNY PLATEAU PARK | 885 NW 117TH ST | 33168 |

Healthcare Facilities (Geocoded)

| Facility Name | Address | Zip Code |
|--|------------------------------|----------|
| ANDREW NULLMAN MD PA | 1190 NW 95 STREET, SUITE 412 | 33150 |
| CENTER FOR KIDNEY DISEASE AT NORTH SHORE | 1190 NW 95 STREET, SUITE 208 | 33150 |
| I & B MEDICAL ASSOCIATES | 1190 NW 95 STREET, SUITE 405 | 33150 |
| UNIHEALTH OF SOUTH FLORIDA INC. | 1190 NW 95 STREET, SUITE 401 | 33150 |
| CHI MD. JOSEPH I. | 1210 NW 95 STREET | 33147 |
| UNIVERSITY MEDICAL H. CENTER | 1190 NW 95 STREET, SUITE 302 | 33150 |
| JTCHC NORTH | 1190 NW 95 STREET, SUITE 110 | 33147 |
| MEDICAL CARE FOR WOMEN LLC | 1190 NW 95 STREET, SUITE 105 | 33150 |
| HUMPHERY JONES | 1190 NW 95 STREET, SUITE 301 | 33150 |
| FULL CIRCLE HEALTH CARE | 1190 NW 95 STREET, SUITE 306 | 33150 |
| HAKAN S. CHARLES-HARRIS | 1190 NW 95 STREET, SUITE 101 | 33150 |
| FRANCO NURSING & REHABILITATION CENTER | 800 NW 95 STREET | 33150 |
| PRIMARY MEDICAL CARE CENTER AND URGENT CARE CENTER | 11500 NW 7 AVENUE | 33168 |
| LITTLE PEOPLE P.A. | 1190 NW 95 STREET, SUITE 204 | 33150 |
| HECHAVARRIA M.D. RAMON | 1190 NW 95 STREET, SUITE 306 | 33150 |
| RUB PEDIATRICS, M.D., P.A. | 1190 NW 95 STREET, SUITE 409 | 33150 |
| REVIVAL ORTHOPAEDICS INC. | 1190 NW 95 STREET, SUITE 305 | 33150 |
| SOUTH FLORIDA PERINATAL MEDICINE | 1100 NW 95 STREET | 33150 |
| DOCTOR'S MEDICAL CENTER | 1272 NW 119 STREET | 33167 |
| PMC NORTH SHORE | 1190 NW 95 STREET, SUITE 310 | 33150 |
| HECHAVARRIA M.D. RAMON | 1190 NW 95 STREET, SUITE 203 | 33150 |
| CHILDREN WELLNESS CENTER | 1190 NW 95 STREET, SUITE 304 | 33150 |
| SOUTH FL ENT | 1190 NW 95 STREET, SUITE 200 | 33150 |
| KIDNEY & HYPERTENSION SPEC. OF MIAMI PA | 1190 NW 95 STREET, SUITE 207 | 33150 |
| PREFERRED CARE PARTNERS MEDICAL GROUP | 1210 NW 95 STREET | 33147 |
| MONTFORD BARBARA MD.PA. | 1190 NW 95 STREET, SUITE 106 | 33150 |
| FULL CIRCLE HEALTH CARE | 1190 NW 95 STREET, SUITE 203 | 33150 |
| KHAN M.D. AFZAL H. | 1190 NW 95 STREET, SUITE 104 | 33150 |
| FISCHER M.D. PA KENNETH C. | 1190 NW 95 STREET, SUITE 402 | 33150 |
| ALAN M. SILBERT MD | 1190 NW 95 STREET, SUITE 201 | 33150 |
| SUNSHINE PAIN MANAGEMENT MEDICAL GROUP | 1190 NW 95 STREET, SUITE 303 | 33150 |

| Facility Name | Address | Zip Code |
|-------------------------|------------------|----------|
| NORTHSHORE NURSING HOME | 9380 NW 7 AVENUE | 33150 |

Hospitals (Points)

| Facility Name | Address | Zip Code |
|----------------------------|-----------------|----------|
| NORTH SHORE MEDICAL CENTER | 1100 NW 95TH ST | 33150 |

Law Enforcement Facilities (Points)

| Facility Name | Address | Zip Code |
|---|-----------------|----------|
| US DEPARTMENT OF HOMELAND SECURITY - USCIS MIAMI FIELD OFFICE | 8801 NW 7TH AVE | 33150 |

Mobile Home Parks in Florida

| Facility Name | Address | Zip Code |
|--------------------------------------|------------------|----------|
| COLONIAL ACRES MOBILE HOME COMMUNITY | 9674 NW 10TH AVE | 33150 |

Public and Private Schools (Points)

| Facility Name | Address | Zip Code |
|--|--------------------|----------|
| SMALL KIDS ACADEMY II CHILD DEVELOPMENT CENTER | 10401 NW 8TH AVE | 33150 |
| VAN E. BLANTON ELEMENTARY SCHOOL | 10327 NW 11TH AVE | 33150 |
| BRIGHT FUTURE SCHOOL OF EXCELLENCE | 10401 NW 8TH AVE. | 33150 |
| LAKEVIEW ELEMENTARY SCHOOL | 1290 NW 115TH ST | 33167 |
| DIAMOND MINDS EXCEL | 985 NW 91ST STREET | 33150 |

Religious Centers (Points)

| Facility Name | Address | Zip Code |
|---------------------------------------|-----------------------------|----------|
| EGLISE BAPTISTE ADONAI | 1299 NW 111TH STREET | 33167 |
| EGLISE EVANGELIQUE BAPTISTE | 1000 NW 111TH STREET | 33168 |
| HAITIAN ALLIANCE CHURCH | 777 NORTHWEST 106TH STREET | 33150 |
| IGLESIA DE DIOS PUERTA DE | 11440 NW 7TH AVENUE | 33168 |
| TEMPLE DE L'ETERNEL | 10836 NW 7TH AVENUE | 33168 |
| TABERNACLE PENTECOSTAL ELIM | 10210 NW 7TH AVENUE | 33150 |
| NEW VISION OUTREACH MINISTRIES | 9900 NW 7TH AVENUE | 33150 |
| ALLEN CHAPEL AME CHURCH | 1201 NW 111TH STREET | 33167 |
| UNITY PENTECOSTAL CHURCH OF GOD | 801 NW 111TH ST | 33168 |
| FAITH COMMUNITY BAPTIST CHURCH | 10401 NW 8TH AVENUE | 33150 |
| MARANATHA BETHANY BAPTIST CHURCH | 10640 NW 12TH AVENUE | 33150 |
| NEW JERUSALEM CHURCH OF GOD | 795 NW 111TH STREET | 33168 |
| TRUE VINE CHURCH OF JESUS CHRIST | 778 NW 95TH TERR | 33150 |
| SILVER BLUE LAKES MISSIONARY | 1448 NW 103RD STREET | 33147 |
| NEW SHILOH MISSIONARY BAPTIST CHURCH | 1350 NW 95TH STREET | 33147 |
| ARCH CHRISTIAN CHURCH | 1400 NW 111TH STREET | 33167 |
| CENTRAL CHURCH OF THE NAZARENE | 1300 NW 95TH STREET | 33147 |
| JEUNE JESUS MIRACLE CHURCH | 11250 NW 7TH AVE | 33168 |
| THE WAY OF HOLINESS OUTREACH MINISTRY | 10600 NORTHWEST 7TH AVENUE | 33150 |
| LAKEVIEW UNITED METHODIST | 11500 NORTHWEST 12TH AVENUE | 33168 |
| FAITHFUL DELIVERANCE TEMPLE | 769 NW 111TH STREET | 33168 |
| MT OLIVE CHURCH OF GOD | 11648 NW 7TH AVENUE | 33168 |
| NORTH DADE ASSEMBLY CHRISTIAN | 11111 NW 17TH AVENUE | 33167 |
| FAITH DELIVERANCE CATHEDRAL | 1180 NW 99TH STREET # 1 | 33150 |

Social Services (Geocoded)

| Facility Name | Address | Zip Code |
|----------------------------|-----------------------------|----------|
| CAREERSOURCE SOUTH FLORIDA | 11500 NORTHWEST 12TH AVENUE | 33168 |
| AMERICORPS BRANCHES | 11500 N.W. 12TH AVENUE | 33168 |

US Census Places

| Facility Name |
|---------------|
| Pinewood |

Facility Name

Westview

West Little River

North Miami

Block Groups

The following Census Block Groups were used to calculate demographics for this report.

1990 Census Block Groups

120250004072, 120250011024, 120250004062, 120250003045, 120250011013, 120250004082, 120250004063, 120250010015, 120250004081, 120250004073, 120250004071, 120250004066, 120250004065, 120250004074, 120250011033, 120250004064

2000 Census Block Groups

120860004082, 120860010061, 120860004066, 120860004065, 120860004073, 120860004081, 120860004062, 120860004063, 120860004074, 120860004072, 120860004071, 120860010021, 120860004064, 120860010051, 120860011033

2010 Census Block Groups

120860004113, 120860011033, 120860004091, 120860010061, 120860004111, 120860004093, 120860004081, 120860004082, 120860010051, 120860004124, 120860004092, 120860004103, 120860004112, 120860004084

2017 Census Block Groups

120860004091, 120860004124, 120860004103, 120860004111, 120860004082, 120860004084, 120860004112, 120860011033, 120860010061, 120860004092, 120860004113, 120860004081, 120860004093, 120860010051

Data Sources

Area

The geographic area of the community based on a user-specified community boundary or area of interest (AOI) boundary.

Jurisdiction

Jurisdiction(s) includes local government boundaries that intersect the community or AOI boundary.

Demographic Data

Demographic data reported under the headings General Population Trends, Race and Ethnicity Trends, Age Trends, Income Trends, Educational Attainment Trends, Language Trends, and Housing Trends is from the U.S. Decennial Census (1990, 2000) and the American Community Survey (ACS) 5-year estimates from 2006-2010 and 2013-2017. The data was gathered at the block group level for user-specified community boundaries and AOIs, and at the county level for counties. Depending on the dataset, the data represents 100% counts (Census Summary File 1) or sample-based information (Census Summary File 3 or ACS).

About the Census Data:

User-specified community boundaries and AOIs do not always correspond precisely to block group boundaries. In these instances, adjustment of the geographic area and data for affected block groups is required to estimate the actual population. To improve the accuracy of such estimates in the SDR report, the census block group data was adjusted to exclude all census blocks with a population of two or fewer. These areas were eliminated from the corresponding years' block groups. Next, the portion of the block group that lies outside of the community or AOI boundary was removed. The demographics within each block group were then recalculated, assuming an equal area distribution of the population. Note that there may be areas where there is no population.

Use caution when comparing the 100% count data (Decennial Census) to the sample-based data (ACS). In any given year, about one in 40 or 2.5% of U.S. households will receive the ACS questionnaire. Over any five-year period, about one in eight households will receive the questionnaire, as compared to about one in six that received the long form questionnaire for the Decennial Census 2000. (Source: <http://mcdc.missouri.edu/pub/data/acs/Readme.shtml>) The U.S. Census Bureau provides help with this process:

<https://www.census.gov/programs-surveys/acs/guidance/comparing-acs-data/2017.html>

Use caution when interpreting changes in Race and Ethnicity over time. Starting with the 2000 Decennial Census, respondents were given a new option of selecting one or more race categories. Also in 2000, the placement of the question about Hispanic origin changed, helping to increase responsiveness to the Hispanic-origin question. Because of these and other changes, the 1990 data on race and ethnicity are not directly comparable with data from later censuses.

(Source: <http://www.census.gov/prod/2001pubs/c2kbr01-1.pdf>;

<http://www.census.gov/pred/www/rpts/Race%20and%20Ethnicity%20FINAL%20report.pdf>)

The "Minority" calculations are derived from Census and ACS data using both the race and ethnicity responses. On this report, "Minority" refers to individuals who list a race other than White and/or list their ethnicity as Hispanic/Latino. In other words, people who are multi-racial, any single race other than White, or Hispanic/Latino of any race are considered minorities.

Disability data is not included in the 2010 Decennial Census, or the 2006-2010 ACS. This data is available in the 2013-2017 ACS.

Because of changes made to the Census and ACS questions between 1990 and 2017, disability variables should not be compared from year to year. For example: 1) With the 1990 data the disabilities are listed as a "work disability" while this distinction is not made with 2000 or 2017 ACS data; 2) The 2017 ACS data includes the institutionalized population (e.g. persons in prisons and group homes), while this population is not included in 1990 or 2000; 3) the age groupings changed over the years.

Please take the following two concerns into account when viewing this data: 1) With the 1990 data the disabilities are listed as a "work disability" while this distinction is not made with 2000 or 2017 ACS data; 2) The 2017 ACS data includes the institutionalized population (e.g. persons in prisons and group homes), while this population is not included in 1990 or 2000.

The category Bachelor's Degree or Higher under the heading Educational Attainment Trends is a subset of the category High School Graduate or Higher.

Income of households. This includes the income of the householder and all other individuals 15 years old and over in the household, whether they are related to the householder or not. Because many households consist of only one person, average household income is usually less than average family income.

Income of families. In compiling statistics on family income, the incomes of all members 15 years old and over related to the householder are summed and treated as a single amount.

Age Trends median age for 1990 is not available.

Land Use Data

The Land Use information Indicates acreages and percentages for the generalized land use types used to group parcel-specific, existing land use assigned by the county property appraiser office according to the Florida Department of Revenue land use codes.

Community Facilities Data

- Assisted Rental Housing Units - Identifies multifamily rental developments that receive funding assistance under federal, state, and local government programs to offer affordable housing as reported by the Shimberg Center for

Housing Studies, University of Florida.

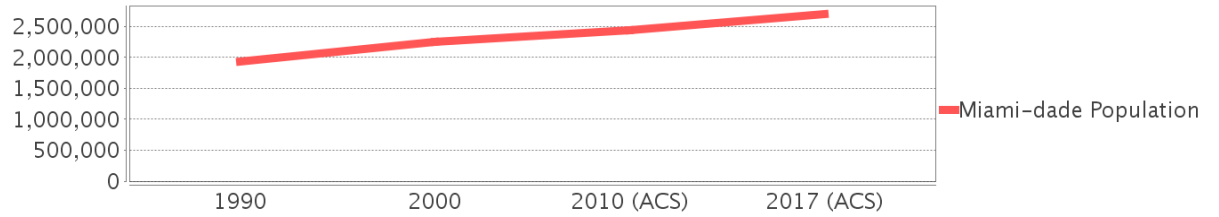
- Mobile Home Parks - Identifies approved or acknowledged mobile home parks reported by the Florida Department of Business and Professional Regulation and Florida Department of Health.
- Migrant Camps - Identifies migrant labor camp facilities inspected by the Florida Department of Health.
- Group Care Facilities - Identifies group care facilities inspected by the Florida Department of Health.
- Community Center and Fraternal Association Facilities - Identifies facilities reported by multiple sources.
- Law Enforcement Correctional Facilities - Identifies facilities reported by multiple sources.
- Cultural Centers - Identifies cultural centers including organizations, buildings, or complexes that promote culture and arts (e.g., aquariums and zoological facilities; arboreta and botanical gardens; dinner theaters; drive-ins; historical places and services; libraries; motion picture theaters; museums and art galleries; performing arts centers; performing arts theaters; planetariums; studios and art galleries; and theater producers stage facilities) reported by multiple sources.
- Fire Department and Rescue Station Facilities - Identifies facilities reported by multiple sources.
- Government Buildings - Identifies local, state, and federal government buildings reported by multiple sources.
- Health Care Facilities - Identifies health care facilities including abortion clinics, dialysis clinics, medical doctors, nursing homes, osteopaths, state laboratories/clinics, and surgicenters/walk-in clinics reported by the Florida Department of Health.
- Hospital Facilities - Identifies hospital facilities reported by multiple sources.
- Law Enforcement Facilities - Identifies law enforcement facilities reported by multiple sources.
- Parks and Recreational Facilities - Identifies parks and recreational facilities reported by multiple sources.
- Religious Center Facilities - Identifies religious centers including churches, temples, synagogues, mosques, chapels, centers, and other types of religious facilities reported by multiple sources.
- Private and Public Schools - Identifies private and public schools reported by multiple sources.
- Social Service Centers - Identifies social service centers reported by multiple sources.
- Veteran Organizations and Facilities

Miami-dade County Demographic Profile

General Population Trends - Miami-dade

| Description | 1990 | 2000 | 2010 (ACS) | 2017 (ACS) |
|-------------------------------|-----------|-----------|------------|------------|
| Total Population | 1,937,094 | 2,253,362 | 2,445,374 | 2,702,602 |
| Total Households | 692,355 | 776,774 | 827,556 | 858,289 |
| Average Persons per Acre | 1.528 | 1.774 | 1.925 | 2.128 |
| Average Persons per Household | 2.798 | 2.84 | 3.00 | 3.09 |
| Average Persons per Family | 3.413 | 3.488 | 3.591 | 3.926 |
| Males | 928,411 | 1,086,558 | 1,182,784 | 1,311,997 |
| Females | 1,008,683 | 1,166,804 | 1,262,590 | 1,390,605 |

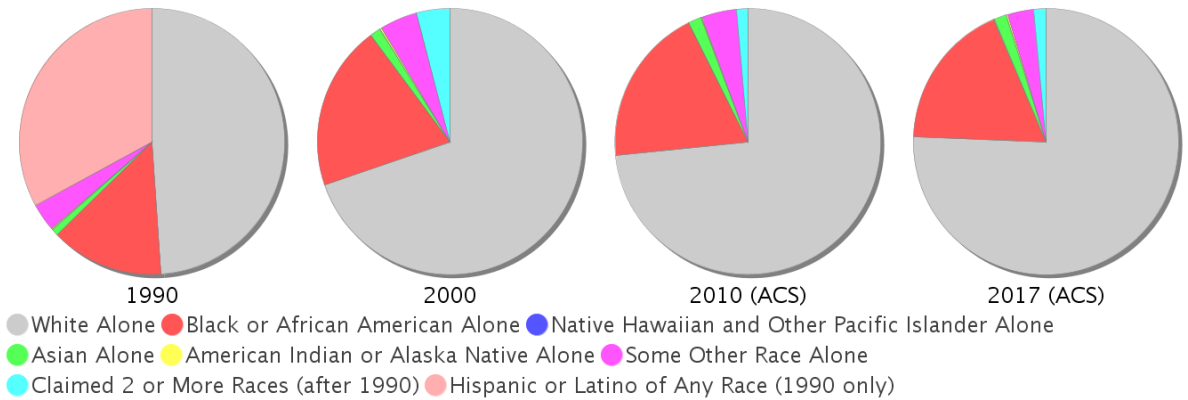
Miami-dade County Population



Race and Ethnicity Trends - Miami-dade

| Description | 1990 | 2000 | 2010 (ACS) | 2017 (ACS) |
|--|------------------------|-----------------------|-----------------------|-----------------------|
| White Alone | 1,413,015 (72.95%) | 1,570,990 (69.72%) | 1,794,730 (73.39%) | 2,043,272 (75.60%) |
| Black or African American Alone | 397,993 (20.55%) | 452,333 (20.07%) | 470,326 (19.23%) | 485,602 (17.97%) |
| Native Hawaiian and Other Pacific Islander Alone | (NA) | 605 (0.03%) | 649 (0.03%) | 724 (0.03%) |
| Asian Alone | 25,869 (1.34%) | 30,692 (1.36%) | 38,813 (1.59%) | 42,770 (1.58%) |
| American Indian or Alaska Native Alone | 3,066 (0.16%) | 4,841 (0.21%) | 3,572 (0.15%) | 4,040 (0.15%) |
| Some Other Race Alone | 96,713 (4.99%) | 102,436 (4.55%) | 102,938 (4.21%) | 84,892 (3.14%) |
| Claimed 2 or More Races | (NA) | 91,465 (4.06%) | 34,346 (1.40%) | 41,302 (1.53%) |
| Hispanic or Latino of Any Race | 953,407 (49.22%) | 1,291,681 (57.32%) | 1,565,410 (64.02%) | 1,823,038 (67.45%) |
| Not Hispanic or Latino | 983,687 (50.78%) | 961,681 (42.68%) | 879,964 (35.98%) | 879,564 (32.55%) |
| Minority | 2,112,884 (109.07%) | 1,787,468 (79.32%) | 2,112,884 (86.40%) | 2,331,369 (86.26%) |

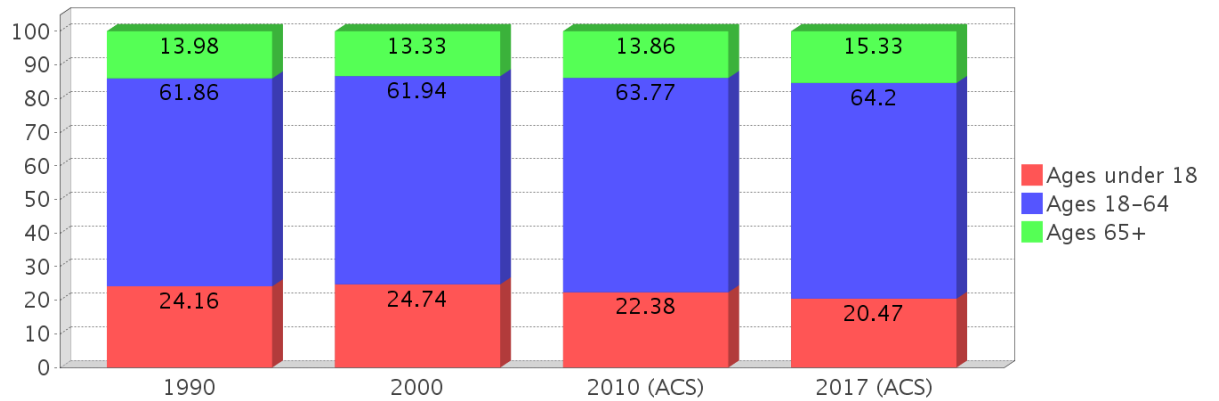
Miami-dade County Race



Age Trends - Miami-dade

| Description | 1990 | 2000 | 2010 (ACS) | 2017 (ACS) |
|------------------|--------|--------|------------|------------|
| Under Age 5 | 7.21% | 6.43% | 6.20% | 5.78% |
| Ages 5-17 | 16.95% | 18.31% | 16.18% | 14.69% |
| Ages 18-21 | 5.60% | 5.24% | 5.83% | 5.06% |
| Ages 22-29 | 13.10% | 10.97% | 10.98% | 11.21% |
| Ages 30-39 | 16.06% | 16.33% | 14.14% | 13.89% |
| Ages 40-49 | 12.47% | 14.49% | 15.67% | 14.68% |
| Ages 50-64 | 14.63% | 14.90% | 17.15% | 19.37% |
| Age 65 and Over | 13.98% | 13.33% | 13.86% | 15.33% |
| -Ages 65-74 | 7.54% | 7.23% | 7.34% | 8.19% |
| -Ages 75-84 | 4.88% | 4.41% | 4.71% | 4.95% |
| -Age 85 and Over | 1.55% | 1.69% | 1.81% | 2.20% |
| Median Age | NA | 36 | 38 | 40 |

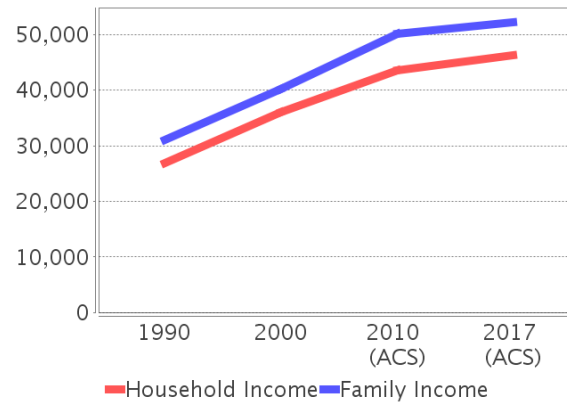
Percentage Population by Age Group - Miami-dade



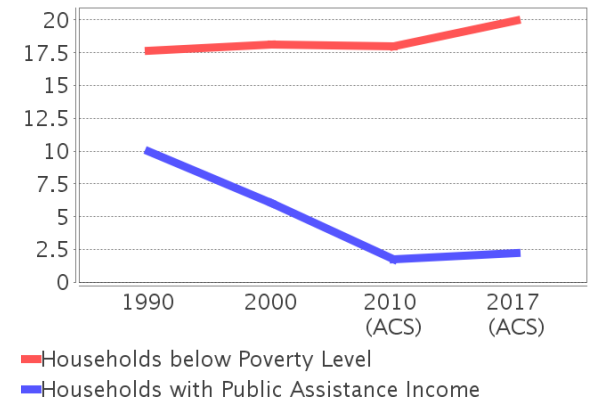
Income Trends - Miami-dade

| Description | 1990 | 2000 | 2010 (ACS) | 2017 (ACS) |
|--|----------|----------|------------|------------|
| Median Household Income | \$26,909 | \$35,966 | \$43,605 | \$46,338 |
| Median Family Income | \$31,113 | \$40,260 | \$50,065 | \$52,235 |
| Population below Poverty Level | 17.94% | 17.97% | 17.18% | 18.98% |
| Households below Poverty Level | 17.62% | 18.10% | 18.02% | 19.95% |
| Households with Public Assistance Income | 9.96% | 6.01% | 1.74% | 2.24% |

Income Trends



Poverty and Public Assistance



Disability Trends - Miami-dade

See the Data Sources section below for an explanation about the differences in disability data among the various years.

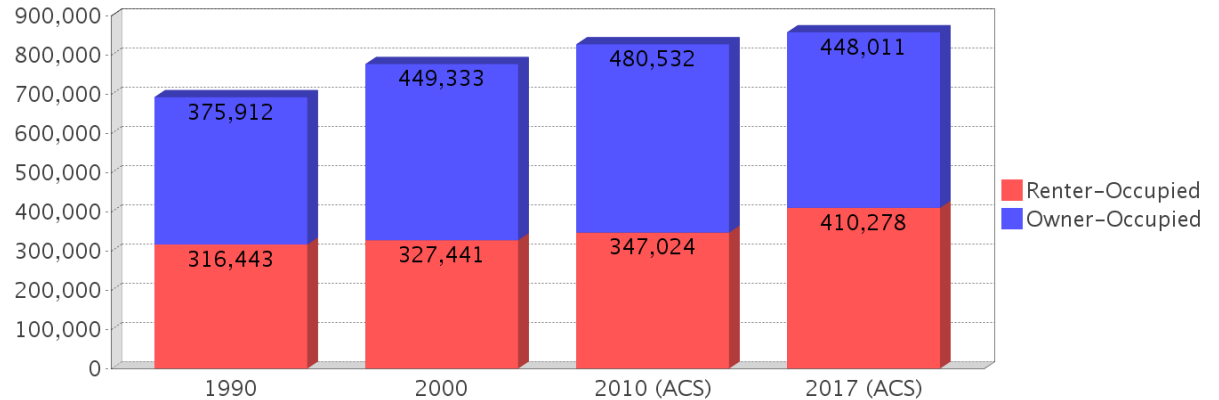
| Description | 1990 | 2000 | 2010 (ACS) | 2017 (ACS) |
|---|----------------|------------------|------------|-----------------|
| Population 16 To 64 Years with a disability | 78,949 (5.28%) | 324,062 (15.60%) | NA (NA) | NA (NA) |
| Population 20 To 64 Years with a disability | NA (NA) | NA (NA) | NA (NA) | 114,936 (6.96%) |

Educational Attainment Trends - Miami-dade

Age 25 and Over

| Description | 1990 | 2000 | 2010 (ACS) | 2017 (ACS) |
|--------------------------------|---------------------|-----------------------|-----------------------|-----------------------|
| Less than 9th Grade | 228,426 (17.83%) | 219,066 (14.68%) | 202,413 (12.23%) | 194,934 (10.23%) |
| 9th to 12th Grade, No Diploma | 219,856 (17.16%) | 260,287 (17.45%) | 178,335 (10.77%) | 167,399 (8.78%) |
| High School Graduate or Higher | 833,013 (65.01%) | 1,012,436 (67.87%) | 1,274,809 (77.00%) | 1,543,966 (80.99%) |
| Bachelor's Degree or Higher | 240,460 (18.77%) | 323,399 (21.68%) | 434,574 (26.25%) | 530,196 (27.81%) |

Housing Tenure - Miami-dade



Language Trends - Miami-dade

Age 5 and Over

| Description | 1990 | 2000 | 2010 (ACS) | 2017 (ACS) |
|---------------------------------------|---------------------|---------------------|---------------------|---------------------|
| Speaks English Well | 221,943 (12.34%) | 285,783 (13.55%) | 302,397 (13.18%) | 333,659 (13.10%) |
| Speaks English Not Well | NA (NA) | 261,782 (12.42%) | 294,777 (12.85%) | 317,308 (12.46%) |
| Speaks English Not at All | NA (NA) | 184,249 (8.74%) | 217,650 (9.49%) | 241,775 (9.49%) |
| Speaks English Not Well or Not at All | 341,005 (18.96%) | 446,031 (21.15%) | 512,427 (22.34%) | 559,083 (21.96%) |

Housing Trends - Miami-dade

| Description | 1990 | 2000 | 2010 (ACS) | 2017 (ACS) |
|-------------------------------------|---------------------|---------------------|--------------------|--------------------|
| Total | 771,288 | 852,278 | 980,580 | 1,008,908 |
| Units per Acre | 0.608 | 0.671 | 0.772 | 0.794 |
| Single-Family Units | 365,600 | 448,569 | 508,364 | 503,457 |
| Multi-Family Units | 301,870 | 387,550 | 457,465 | 492,080 |
| Mobile Home Units | 15,359 | 15,338 | 14,234 | 13,071 |
| Owner-Occupied Units | 375,912 | 449,333 | 480,532 | 448,011 |
| Renter-Occupied Units | 316,443 | 327,441 | 347,024 | 410,278 |
| Vacant Units | 78,933 | 75,504 | 153,024 | 150,619 |
| Median Housing Value | \$86,000 | \$113,200 | \$269,600 | \$242,800 |
| Occupied Housing Units w/No Vehicle | 110,809 (16.00%) | 111,323 (14.33%) | 91,558 (11.06%) | 92,055 (10.73%) |

County Data Sources

Demographic data reported is from the U.S. Decennial Census (1990, 2000) and the American Community Survey (ACS) 5-year estimates from 2006-2010 and 2013-2017. The data was gathered at the county level. Depending on the dataset, the data represents 100% counts (Census Summary File 1) or sample-based information (Census Summary File 3 or ACS).

About the Census Data:

Use caution when comparing the 100% count data (Decennial Census) to the sample-based data (ACS). In any given year, about one in 40 or 2.5% of U.S. households will receive the ACS questionnaire. Over any five-year period, about one in eight households will receive the questionnaire, as compared to about one in six that received the long form questionnaire for the Decennial Census 2000. (Source: <http://mcdc.missouri.edu/pub/data/acs/Readme.shtml>) The U.S. Census Bureau provides help with this process:

<https://www.census.gov/programs-surveys/acs/guidance/comparing-acs-data/2017.html>

Use caution when interpreting changes in Race and Ethnicity over time. Starting with the 2000 Decennial Census, respondents were given a new option of selecting one or more race categories. Also in 2000, the placement of the question about Hispanic origin changed, helping to increase responsiveness to the Hispanic-origin question. Because of these and other changes, the 1990 data on race and ethnicity are not directly comparable with data from later censuses. (Source: <http://www.census.gov/prod/2001pubs/c2kbr01-1.pdf>;
<http://www.census.gov/pred/www/rpts/Race%20and%20Ethnicity%20FINAL%20report.pdf>)

The "Minority" calculations are derived from Census and ACS data using both the race and ethnicity responses. On this report, "Minority" refers to individuals who list a race other than White and/or list their ethnicity as Hispanic/Latino. In other words, people who are multi-racial, any single race other than White, or Hispanic/Latino of any race are considered minorities.

Disability data is not included in the 2010 Decennial Census, or the 2006-2010 ACS. This data is available in the 2013-2017 ACS.

Because of changes made to the Census and ACS questions between 1990 and 2017, disability variables should not be compared from year to year. For example: 1) With the 1990 data the disabilities are listed as a "work disability" while this distinction is not made with 2000 or 2017 ACS data; 2) The 2017 ACS data includes the institutionalized population (e.g. persons in prisons and group homes), while this population is not included in 1990 or 2000; 3) the age groupings changed over the years.

Please take the following two concerns into account when viewing this data: 1) With the 1990 data the disabilities are listed as a "work disability" while this distinction is not made with 2000 or 2017 ACS data; 2) The 2017 ACS data includes the institutionalized population (e.g. persons in prisons and group homes), while this population is not included in 1990 or 2000.

source:

<https://www.census.gov/people/disability/methodology/acs.html>

<https://www.census.gov/population/www/cen2000/90vs00/index.html>

The category Bachelor's Degree or Higher under the heading Educational Attainment Trends is a subset of the category High School Graduate or Higher.

Metadata

- Community and Fraternal Centers https://etdmpub.florida-estat.org/metadata/gc_communitycenter.htm
- Correctional Facilities in Florida https://etdmpub.florida-estat.org/metadata/gc_correctional.htm
- Cultural Centers in Florida https://etdmpub.florida-estat.org/metadata/gc_culturecenter.htm
- Fire Department and Rescue Station Facilities in Florida https://etdmpub.florida-estat.org/metadata/gc_firestat.htm
- Local, State, and Federal Government Buildings in Florida https://etdmpub.florida-estat.org/metadata/gc_govbuild.htm
- Florida Health Care Facilities https://etdmpub.florida-estat.org/metadata/gc_health.htm
- Hospital Facilities in Florida https://etdmpub.florida-estat.org/metadata/gc_hospitals.htm
- Law Enforcement Facilities in Florida https://etdmpub.florida-estat.org/metadata/gc_lawenforce.htm
- Florida Parks and Recreational Facilities https://etdmpub.florida-estat.org/metadata/gc_parks.htm
- Religious Centers https://etdmpub.florida-estat.org/metadata/gc_religion.htm
- Florida Public and Private Schools https://etdmpub.florida-estat.org/metadata/gc_schools.htm
- Social Service Centers https://etdmpub.florida-estat.org/metadata/gc_socialservice.htm
- Assisted Rental Housing Units in Florida https://etdmpub.florida-estat.org/metadata/gc_assisted_housing.htm
- Group Care Facilities <https://etdmpub.florida-estat.org/metadata/groupcare.htm>
- Mobile Home Parks in Florida https://etdmpub.florida-estat.org/metadata/gc_mobilehomes.htm
- Migrant Camps in Florida <https://etdmpub.florida-estat.org/metadata/migrant.htm>
- Veteran Organizations and Facilities https://etdmpub.florida-estat.org/metadata/gc_veterans.htm
- Generalized Land Use - Florida DOT District 6 https://etdmpub.florida-estat.org/metadata/d6_lu_gen.htm
- Census Block Groups in Florida https://etdmpub.florida-estat.org/metadata/e2_cenacs_cci.htm
- 1990 Census Block Groups in Florida https://etdmpub.florida-estat.org/metadata/e2_cenblkgrp_1990_cci.htm
- 2000 Census Block Groups in Florida https://etdmpub.florida-estat.org/metadata/e2_cenblkgrp_2000_cci.htm
- 2010 Census Block Groups in Florida https://etdmpub.florida-estat.org/metadata/e2_cenblkgrp_2010_cci.htm