

Sociocultural Data Report

Siesta Key

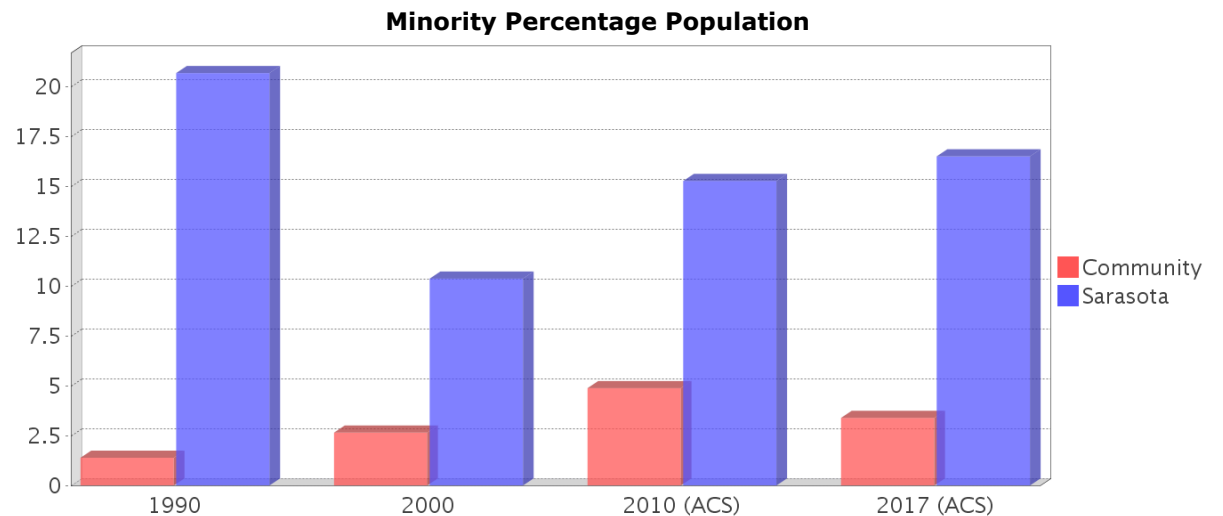
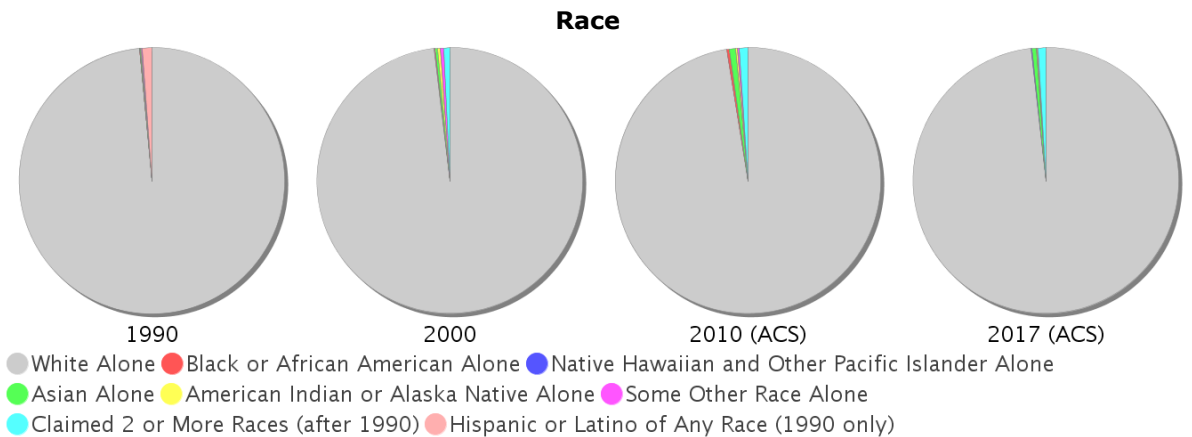
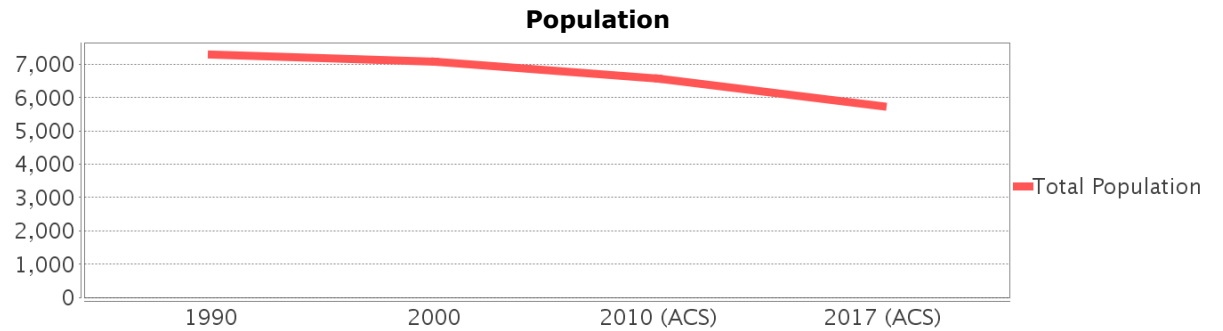
Area: 3.483 square miles
Jurisdiction(s): **Cities:** Sarasota
Counties: Sarasota

General Population Trends

Description	1990	2000	2010 (ACS)	2017 (ACS)
Total Population	7,286	7,062	6,557	5,751
Total Households	3,658	3,658	3,471	2,807
Average Persons per Acre	5.25	4.75	4.50	3.90
Average Persons per Household	1.99	1.96	2.00	2.01
Average Persons per Family	2.43	2.41	2.40	2.53
Males	3,470	3,413	3,162	2,721
Females	3,816	3,649	3,395	3,030

Race and Ethnicity Trends

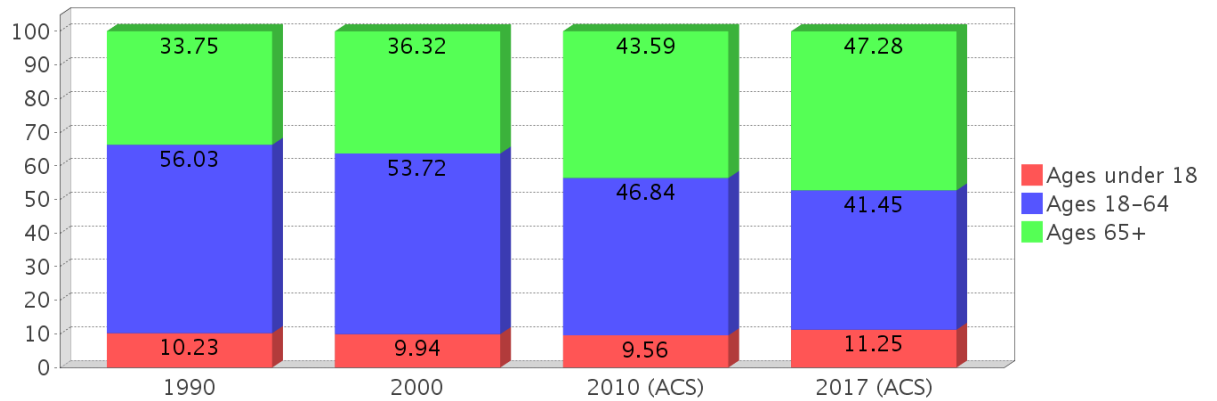
Description	1990	2000	2010 (ACS)	2017 (ACS)
White Alone	7,259 (99.63%)	6,931 (98.15%)	6,386 (97.39%)	5,648 (98.21%)
Black or African American Alone	5 (0.07%)	8 (0.11%)	20 (0.31%)	0 (0.00%)
Native Hawaiian and Other Pacific Islander Alone	0 (0.00%)	0 (0.00%)	1 (0.02%)	7 (0.12%)
Asian Alone	8 (0.11%)	18 (0.25%)	52 (0.79%)	31 (0.54%)
American Indian or Alaska Native Alone	4 (0.05%)	26 (0.37%)	16 (0.24%)	6 (0.10%)
Some Other Race Alone	10 (0.14%)	27 (0.38%)	14 (0.21%)	3 (0.05%)
Claimed 2 or More Races	NA (NA)	53 (0.75%)	67 (1.02%)	56 (0.97%)
Hispanic or Latino of Any Race	85 (1.17%)	106 (1.50%)	181 (2.76%)	93 (1.62%)
Not Hispanic or Latino	7,201 (98.83%)	6,956 (98.50%)	6,376 (97.24%)	5,658 (98.38%)
Minority	101 (1.39%)	187 (2.65%)	320 (4.88%)	195 (3.39%)



Age Trends

Description	1990	2000	2010 (ACS)	2017 (ACS)
Under Age 5	2.32%	2.24%	1.72%	3.93%
Ages 5-17	7.91%	7.70%	7.84%	7.32%
Ages 18-21	3.02%	1.10%	1.75%	2.17%
Ages 22-29	5.82%	3.79%	2.90%	3.43%
Ages 30-39	11.28%	7.75%	5.23%	5.11%
Ages 40-49	13.79%	13.71%	10.43%	8.14%
Ages 50-64	22.11%	27.37%	26.52%	22.60%
Age 65 and Over	33.75%	36.32%	43.59%	47.28%
-Ages 65-74	19.71%	20.07%	21.95%	25.42%
-Ages 75-84	11.78%	13.08%	16.44%	16.78%
-Age 85 and Over	2.28%	3.16%	5.22%	5.08%
Median Age	NA	56	60	64

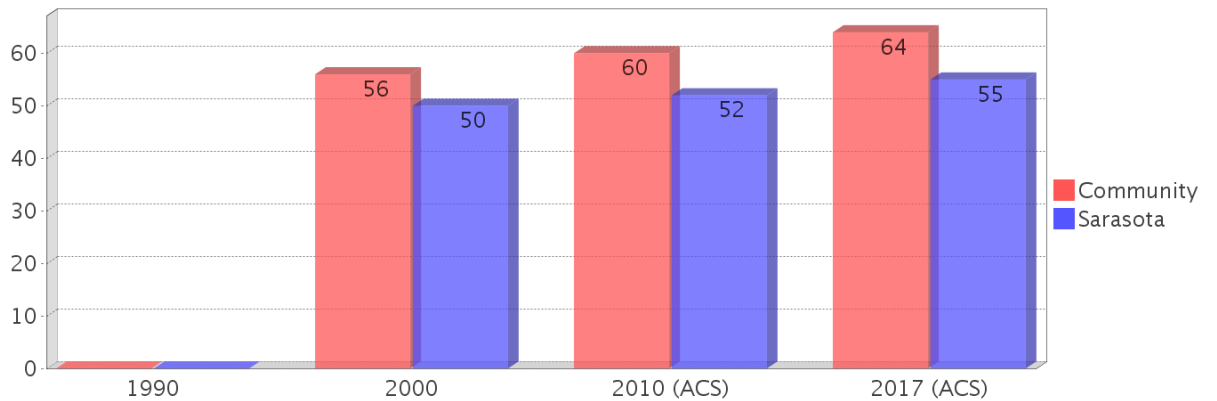
Percentage Population by Age Group



Income Trends

Description	1990	2000	2010 (ACS)	2017 (ACS)
Median Household Income	\$39,128	\$65,144	\$70,500	\$80,375
Median Family Income	\$42,679	\$78,365	\$77,232	\$119,167
Population below Poverty Level	3.97%	4.28%	7.23%	4.40%
Households below Poverty Level	4.35%	5.60%	7.32%	5.63%
Households with Public Assistance Income	1.67%	0.00%	0.40%	0.14%

Median Age Comparison

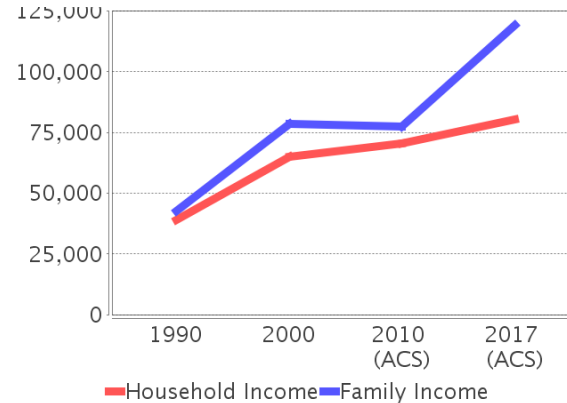


Disability Trends

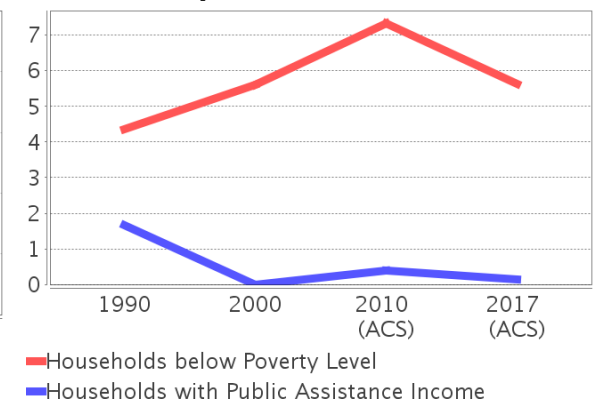
See the Data Sources section below for an explanation about the differences in disability data among the various years.

Description	1990	2000	2010 (ACS)	2017 (ACS)
Population 16 To 64 Years with a disability	229 (3.48%)	568 (8.23%)	(NA)	(NA)
Population 20 To 64 Years with a disability	(NA)	(NA)	(NA)	96 (4.15%)

Income Trends



Poverty and Public Assistance



Educational Attainment Trends

Age 25 and Over

Description	1990	2000	2010 (ACS)	2017 (ACS)
Less than 9th Grade	75 (1.23%)	44 (0.71%)	138 (2.36%)	23 (0.48%)
9th to 12th Grade, No Diploma	295 (4.83%)	228 (3.70%)	253 (4.32%)	80 (1.65%)
High School Graduate or Higher	5,743 (93.95%)	5,886 (95.60%)	5,469 (93.34%)	4,738 (97.87%)
Bachelor's Degree or Higher	2,586 (42.30%)	3,190 (51.81%)	2,666 (45.50%)	2,861 (59.10%)

Language Trends

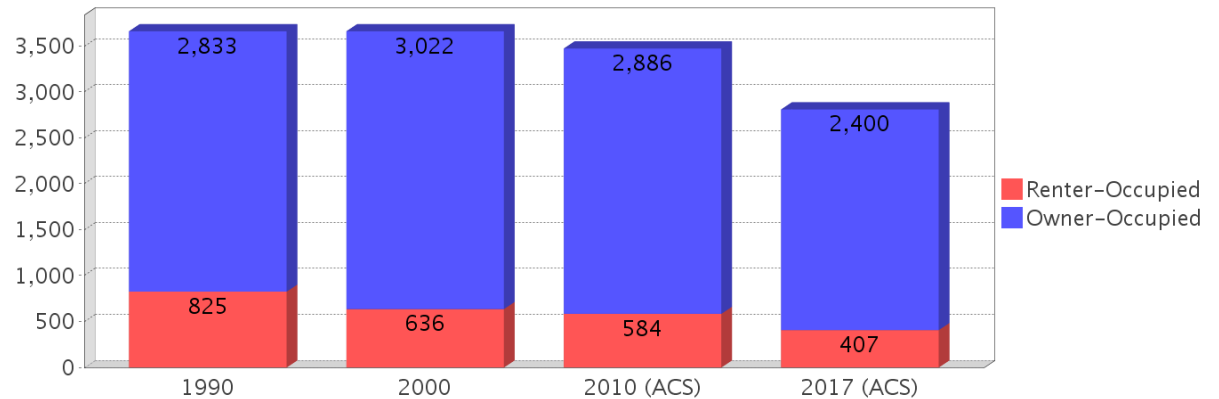
Age 5 and Over

Description	1990	2000	2010 (ACS)	2017 (ACS)
Speaks English Well	66 (0.94%)	105 (1.52%)	99 (1.53%)	48 (0.87%)
Speaks English Not Well	NA (NA)	38 (0.55%)	31 (0.48%)	22 (0.40%)
Speaks English Not at All	NA (NA)	0 (0.00%)	0 (0.00%)	0 (0.00%)
Speaks English Not Well or Not at All	4 (0.06%)	38 (0.55%)	31 (0.48%)	22 (0.40%)

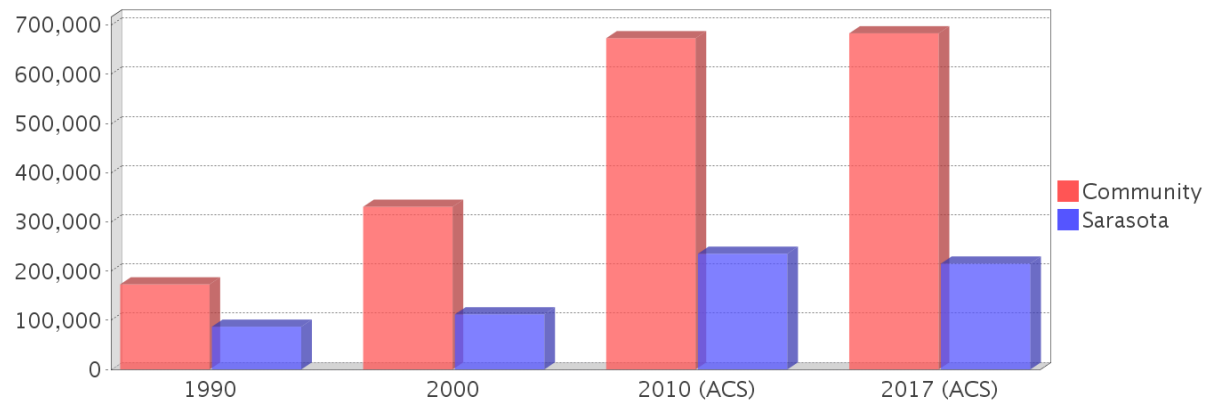
Housing Trends

Description	1990	2000	2010 (ACS)	2017 (ACS)
Total	6,471	6,771	8,036	8,190
Units per Acre	4.51	4.49	5.36	5.46
Single-Family Units	2,154	2,719	3,099	3,142
Multi-Family Units	1,467	4,027	4,923	5,042
Mobile Home Units	3	23	0	6
Owner-Occupied Units	2,833	3,022	2,886	2,400
Renter-Occupied Units	825	636	584	407
Vacant Units	2,813	3,113	4,565	5,383
Median Housing Value	\$172,800	\$330,700	\$673,300	\$683,300
Occupied Housing Units w/No Vehicle	86 (2.35%)	90 (2.46%)	69 (1.99%)	25 (0.89%)

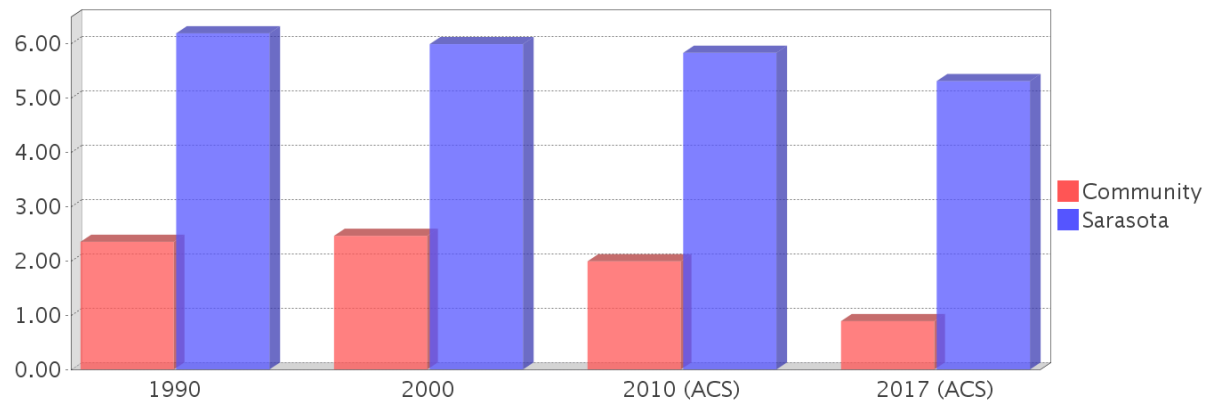
Housing Tenure



Median Housing Value Comparison

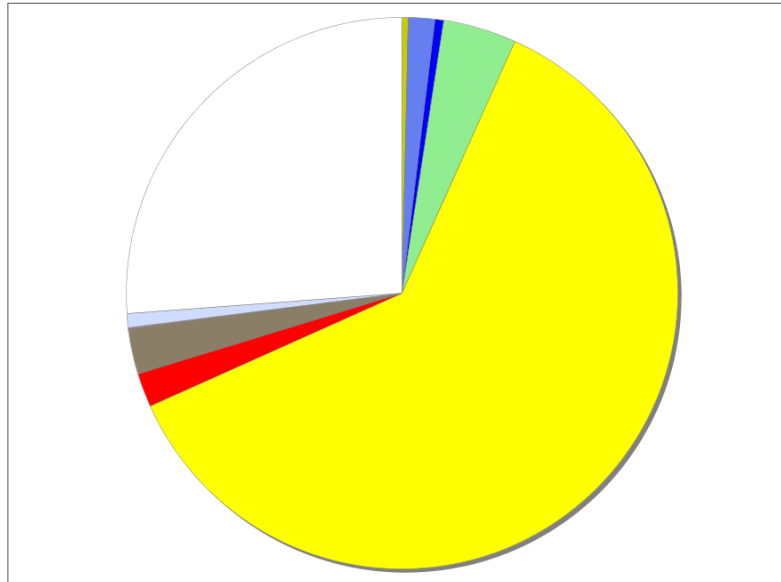


Occupied Units With No Vehicles Available



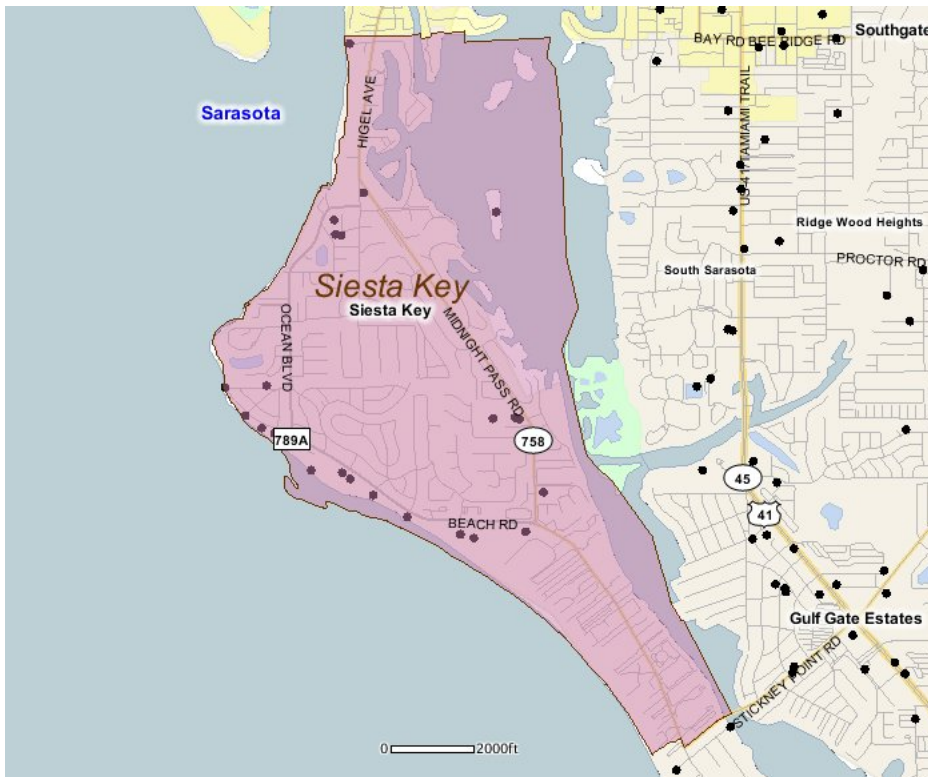
Existing Land Use

Land Use Type	Acres	Percentage
Acreage Not Zoned For Agriculture	6	0.27%
Agricultural	0	0.00%
Centrally Assessed	0	0.00%
Industrial	<0.5	<0.02%
Institutional	25	1.12%
Mining	0	0.00%
Other	<0.5	<0.02%
Public/Semi-Public	8	0.36%
Recreation	69	3.10%
Residential	993	44.55%
Retail/Office	32	1.44%
Row	<0.5	<0.02%
Vacant Residential	43	1.93%
Vacant Nonresidential	1	0.04%
Water	13	0.58%
Parcels With No Values	422	18.93%



- Acreage Not Zoned For Agriculture
- Agricultural
- Centrally Assessed
- Industrial
- Institutional
- Mining
- Other
- Public/Semi-Public
- Recreation
- Residential
- Retail/Office
- Row
- Vacant Residential
- Vacant Nonresidential
- Water
- Parcels With No Values

Location Maps



Community Facilities

The community facilities information below is useful in a variety of ways for environmental evaluations. These community resources should be evaluated for potential sociocultural effects, such as accessibility and relocation potential. The facility types may indicate the types of population groups present in the project study area. Facility staff and leaders can be sources of community information such as who uses the facility and how it is used. Additionally, community facilities are potential public meeting venues.

Community Centers (Points)

Facility Name	Address	Zip Code
KNIGHTS OF COLUMBUS 14845 - SAINT MICHAEL THE ARCHANGEL	5394 MIDNIGHT PASS RD	34242

Fire Stations (Points)

Facility Name	Address	Zip Code
SARASOTA COUNTY FIRE DEPARTMENT AND RESCUE STATION 13	1170 BEACH RD	34242

Florida Parks and Recreational Facilities (Points)

Facility Name	Address	Zip Code
SIESTA KEY BEACH ACCESS 4	OCEAN BLVD WEST OF AVENIDA NAVARRA	34242
SIESTA KEY BEACH ACCESS 7	5404 CALLE DE LA SIESTA	34242
BOYD PARK	4300 MIDNIGHT PASS RD	34242
SIESTA KEY BEACH ACCESS 10	BEACH RD & CALLE DE INVIERNO	34242
GLEBE PARK	998 GLEBE LN	34242
SIESTA KEY BEACH ACCESS 8	BEACH RD & PLAZA DES LAS PALMAS	34242
SIESTA BEACH PARK	948 BEACH RD	34242
SKIERS ISLAND	ROBERTS BAY	34242
SIESTA KEY BEACH ACCESS 9	BEACH RD & PLAZA DES LAS PALMAS	34242
SIESTA KEY BEACH ACCESS 11	BEACH RD & AVENIDA DEL MARE	34242
SIESTA KEY BEACH ACCESS 2	OCEAN BLVD W OF AVENIDA MESSIANA	34242
SIESTA KEY BEACH ACCESS 3	COLUMBUS BLVD & BEACH RD	34242
SIESTA KEY BEACH ACCESS 5	OCEAN BLVD & BEACH RD	34242
SIESTA KEY BEACH ACCESS 3B	136 BEACH RD	34242
SIESTA KEY BEACH ACCESS 1	N SHELL RD	34242

Healthcare Facilities (Geocoded)

Facility Name	Address	Zip Code
LACLAIR MD PA, BARRY J	121 AVENIDA MESSINA	34242

Law Enforcement Facilities (Points)

Facility Name	Address	Zip Code
SARASOTA COUNTY SHERIFF'S OFFICE - SIESTA KEY SUBSTATION	948 BEACH RD	34242

Public and Private Schools (Points)

Facility Name	Address	Zip Code
OUT-OF-DOOR ACADEMY, INC.	444 REID ST	34242

Religious Centers (Points)

Facility Name	Address	Zip Code
ST BONIFACE EPISCPL CHURCH HEALING MISSION/PRE SC	5615 MIDNIGHT PASS RD	34242
SIESTA KEY CHAPEL-PRESBYTERIAN	4615 GLEASON AVENUE	34242
ST MICHAEL THE ARCHANGEL PARISH	5394 MIDNIGHT PASS RD	34242

US Census Places

Facility Name
Sarasota

Facility Name

Siesta Key

South Sarasota

Block Groups

The following Census Block Groups were used to calculate demographics for this report.

1990 Census Block Groups

121150019022, 121150019012, 121150019011, 121150018014, 121150019013, 121150019021

2000 Census Block Groups

121150019042, 121150019043, 121150019022, 121150019032, 121150019041, 121150019021, 121150019031, 121150018012

2010 Census Block Groups

121150019081, 121150019032, 121150019043, 121150019041, 121150019042, 121150019052, 121150018012, 121150019082, 121150019031, 121150019051

2017 Census Block Groups

121150019081, 121150019042, 121150019031, 121150018012, 121150019043, 121150019032, 121150019052, 121150019082, 121150019041, 121150019051

Data Sources

Area

The geographic area of the community based on a user-specified community boundary or area of interest (AOI) boundary.

Jurisdiction

Jurisdiction(s) includes local government boundaries that intersect the community or AOI boundary.

Demographic Data

Demographic data reported under the headings General Population Trends, Race and Ethnicity Trends, Age Trends, Income Trends, Educational Attainment Trends, Language Trends, and Housing Trends is from the U.S. Decennial Census (1990, 2000) and the American Community Survey (ACS) 5-year estimates from 2006-2010 and 2013-2017. The data was gathered at the block group level for user-specified community boundaries and AOIs, and at the county level for counties. Depending on the dataset, the data represents 100% counts (Census Summary File 1) or sample-based information (Census Summary File 3 or ACS).

About the Census Data:

User-specified community boundaries and AOIs do not always correspond precisely to block group boundaries. In these instances, adjustment of the geographic area and data for affected block groups is required to estimate the actual population. To improve the accuracy of such estimates in the SDR report, the census block group data was adjusted to exclude all census blocks with a population of two or fewer. These areas were eliminated from the corresponding years' block groups. Next, the portion of the block group that lies outside of the community or AOI boundary was removed. The demographics within each block group were then recalculated, assuming an equal area distribution of the population. Note that there may be areas where there is no population.

Use caution when comparing the 100% count data (Decennial Census) to the sample-based data (ACS). In any given year, about one in 40 or 2.5% of U.S. households will receive the ACS questionnaire. Over any five-year period, about one in eight households will receive the questionnaire, as compared to about one in six that received the long form

questionnaire for the Decennial Census 2000. (Source: <http://mcdc.missouri.edu/pub/data/acs/Readme.shtml>) The U.S. Census Bureau provides help with this process:

<https://www.census.gov/programs-surveys/acs/guidance/comparing-acs-data/2017.html>

Use caution when interpreting changes in Race and Ethnicity over time. Starting with the 2000 Decennial Census, respondents were given a new option of selecting one or more race categories. Also in 2000, the placement of the question about Hispanic origin changed, helping to increase responsiveness to the Hispanic-origin question. Because of these and other changes, the 1990 data on race and ethnicity are not directly comparable with data from later censuses. (Source: <http://www.census.gov/prod/2001pubs/c2kbr01-1.pdf>; <http://www.census.gov/pred/www/rpts/Race%20and%20Ethnicity%20FINAL%20report.pdf>)

The "Minority" calculations are derived from Census and ACS data using both the race and ethnicity responses. On this report, "Minority" refers to individuals who list a race other than White and/or list their ethnicity as Hispanic/Latino. In other words, people who are multi-racial, any single race other than White, or Hispanic/Latino of any race are considered minorities.

Disability data is not included in the 2010 Decennial Census, or the 2006-2010 ACS. This data is available in the 2013-2017 ACS.

Because of changes made to the Census and ACS questions between 1990 and 2017, disability variables should not be compared from year to year. For example: 1) With the 1990 data the disabilities are listed as a "work disability" while this distinction is not made with 2000 or 2017 ACS data; 2) The 2017 ACS data includes the institutionalized population (e.g. persons in prisons and group homes), while this population is not included in 1990 or 2000; 3) the age groupings changed over the years.

Please take the following two concerns into account when viewing this data: 1) With the 1990 data the disabilities are listed as a "work disability" while this distinction is not made with 2000 or 2017 ACS data; 2) The 2017 ACS data includes the institutionalized population (e.g. persons in prisons and group homes), while this population is not included in 1990 or 2000.

The category Bachelor's Degree or Higher under the heading Educational Attainment Trends is a subset of the category High School Graduate or Higher.

Income of households. This includes the income of the householder and all other individuals 15 years old and over in the household, whether they are related to the householder or not. Because many households consist of only one person, average household income is usually less than average family income.

Income of families. In compiling statistics on family income, the incomes of all members 15 years old and over related to the householder are summed and treated as a single amount.

Age Trends median age for 1990 is not available.

Land Use Data

The Land Use information Indicates acreages and percentages for the generalized land use types used to group parcel-specific, existing land use assigned by the county property appraiser office according to the Florida Department of Revenue land use codes.

Community Facilities Data

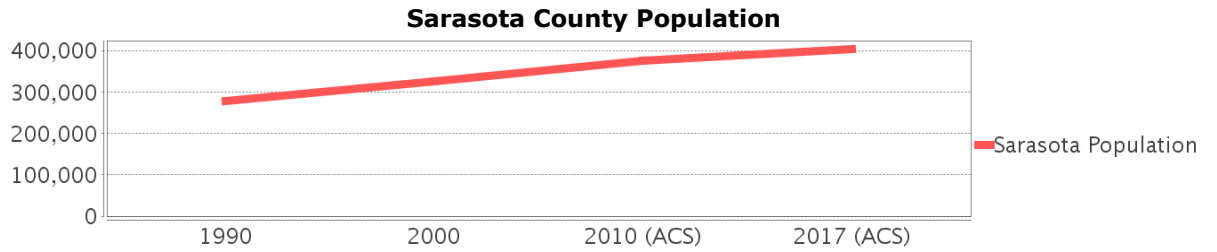
- Assisted Rental Housing Units - Identifies multifamily rental developments that receive funding assistance under federal, state, and local government programs to offer affordable housing as reported by the Shimberg Center for Housing Studies, University of Florida.
- Mobile Home Parks - Identifies approved or acknowledged mobile home parks reported by the Florida Department of Business and Professional Regulation and Florida Department of Health.

- Migrant Camps - Identifies migrant labor camp facilities inspected by the Florida Department of Health.
- Group Care Facilities - Identifies group care facilities inspected by the Florida Department of Health.
- Community Center and Fraternal Association Facilities - Identifies facilities reported by multiple sources.
- Law Enforcement Correctional Facilities - Identifies facilities reported by multiple sources.
- Cultural Centers - Identifies cultural centers including organizations, buildings, or complexes that promote culture and arts (e.g., aquariums and zoological facilities; arboreta and botanical gardens; dinner theaters; drive-ins; historical places and services; libraries; motion picture theaters; museums and art galleries; performing arts centers; performing arts theaters; planetariums; studios and art galleries; and theater producers stage facilities) reported by multiple sources.
- Fire Department and Rescue Station Facilities - Identifies facilities reported by multiple sources.
- Government Buildings - Identifies local, state, and federal government buildings reported by multiple sources.
- Health Care Facilities - Identifies health care facilities including abortion clinics, dialysis clinics, medical doctors, nursing homes, osteopaths, state laboratories/clinics, and surgicenters/walk-in clinics reported by the Florida Department of Health.
- Hospital Facilities - Identifies hospital facilities reported by multiple sources.
- Law Enforcement Facilities - Identifies law enforcement facilities reported by multiple sources.
- Parks and Recreational Facilities - Identifies parks and recreational facilities reported by multiple sources.
- Religious Center Facilities - Identifies religious centers including churches, temples, synagogues, mosques, chapels, centers, and other types of religious facilities reported by multiple sources.
- Private and Public Schools - Identifies private and public schools reported by multiple sources.
- Social Service Centers - Identifies social service centers reported by multiple sources.
- Veteran Organizations and Facilities

Sarasota County Demographic Profile

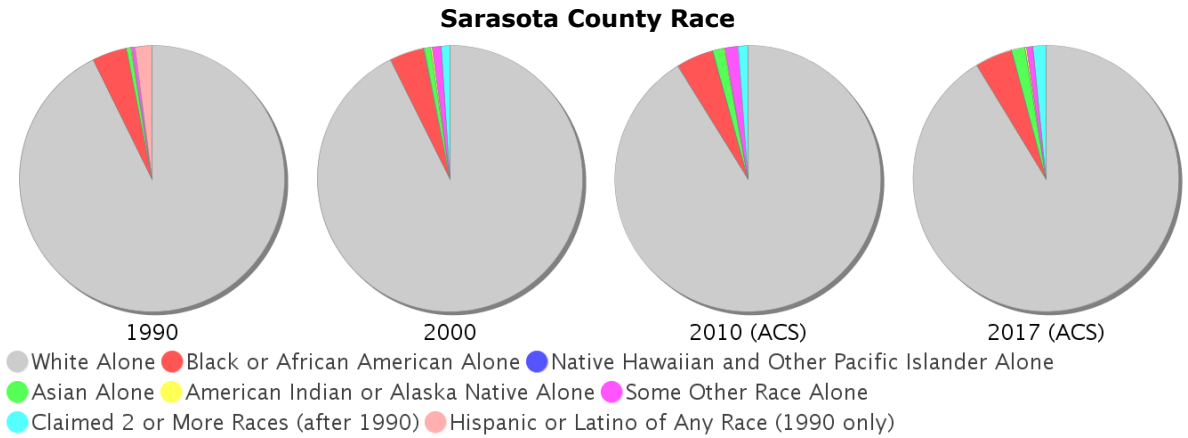
General Population Trends - Sarasota

Description	1990	2000	2010 (ACS)	2017 (ACS)
Total Population	277,776	325,957	376,200	404,839
Total Households	125,493	149,937	169,009	177,998
Average Persons per Acre	0.75	0.88	1.016	1.093
Average Persons per Household	2.213	2.128	2.00	2.24
Average Persons per Family	2.658	2.662	2.81	2.878
Males	130,050	154,273	179,638	193,328
Females	147,726	171,684	196,562	211,511



Race and Ethnicity Trends - Sarasota

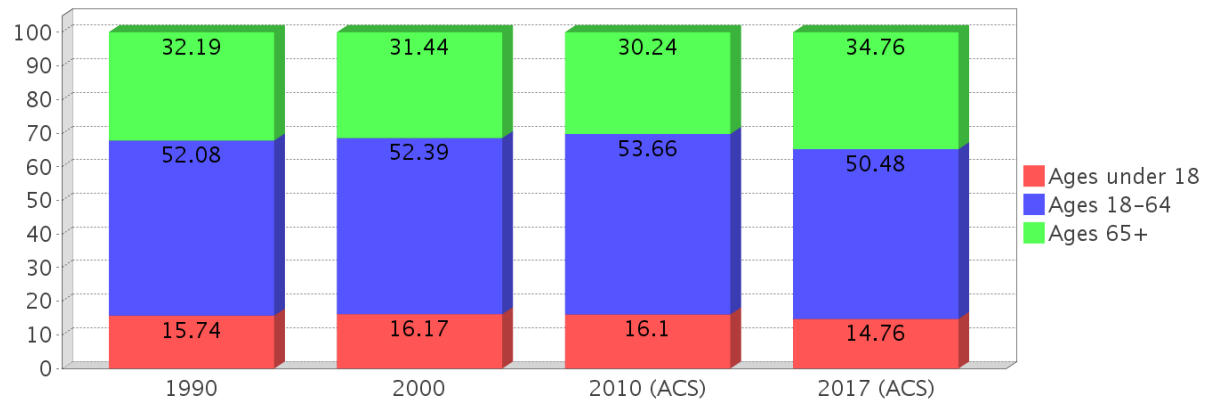
Description	1990	2000	2010 (ACS)	2017 (ACS)
White Alone	262,836 (94.62%)	301,972 (92.64%)	342,987 (91.17%)	369,537 (91.28%)
Black or African American Alone	12,073 (4.35%)	13,677 (4.20%)	17,082 (4.54%)	18,338 (4.53%)
Native Hawaiian and Other Pacific Islander Alone	(NA)	35 (0.01%)	85 (0.02%)	54 (0.01%)
Asian Alone	1,386 (0.50%)	2,624 (0.81%)	5,060 (1.35%)	6,702 (1.66%)
American Indian or Alaska Native Alone	483 (0.17%)	812 (0.25%)	589 (0.16%)	837 (0.21%)
Some Other Race Alone	954 (0.34%)	3,478 (1.07%)	5,823 (1.55%)	3,095 (0.76%)
Claimed 2 or More Races	(NA)	3,359 (1.03%)	4,574 (1.22%)	6,276 (1.55%)
Hispanic or Latino of Any Race	5,882 (2.12%)	14,373 (4.41%)	27,759 (7.38%)	35,694 (8.82%)
Not Hispanic or Latino	271,894 (97.88%)	311,584 (95.59%)	348,441 (92.62%)	369,145 (91.18%)
Minority	57,470 (20.69%)	33,834 (10.38%)	57,470 (15.28%)	66,839 (16.51%)



Age Trends - Sarasota

Description	1990	2000	2010 (ACS)	2017 (ACS)
Under Age 5	4.56%	3.87%	3.99%	3.67%
Ages 5-17	11.18%	12.30%	12.11%	11.09%
Ages 18-21	3.57%	3.00%	3.61%	3.45%
Ages 22-29	8.33%	5.93%	6.40%	6.68%
Ages 30-39	12.55%	11.04%	9.16%	8.43%
Ages 40-49	10.84%	13.32%	12.40%	9.97%
Ages 50-64	16.79%	19.10%	22.09%	21.96%
Age 65 and Over	32.19%	31.44%	30.24%	34.76%
-Ages 65-74	17.95%	15.23%	14.65%	17.70%
-Ages 75-84	11.14%	12.08%	11.25%	11.60%
-Age 85 and Over	3.10%	4.13%	4.34%	5.46%
Median Age	NA	50	52	55

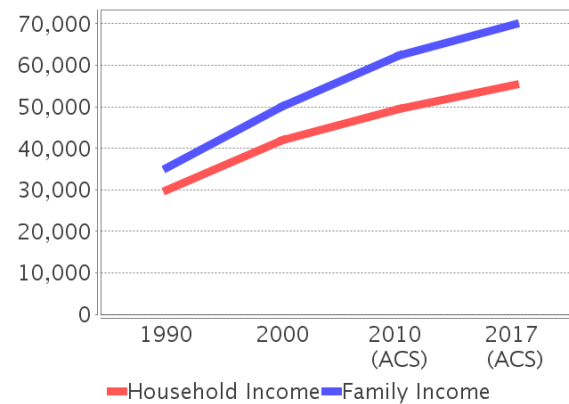
Percentage Population by Age Group - Sarasota



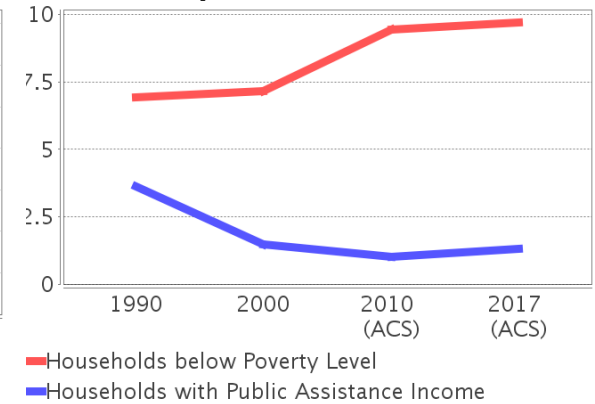
Income Trends - Sarasota

Description	1990	2000	2010 (ACS)	2017 (ACS)
Median Household Income	\$29,919	\$41,957	\$49,388	\$55,236
Median Family Income	\$35,322	\$50,111	\$62,326	\$69,898
Population below Poverty Level	6.93%	7.77%	10.47%	10.50%
Households below Poverty Level	6.94%	7.14%	9.43%	9.69%
Households with Public Assistance Income	3.64%	1.47%	1.00%	1.30%

Income Trends



Poverty and Public Assistance



Disability Trends - Sarasota

See the Data Sources section below for an explanation about the differences in disability data among the various years.

Description	1990	2000	2010 (ACS)	2017 (ACS)
Population 16 To 64 Years with a disability	12,749 (5.42%)	34,337 (11.14%)	NA (NA)	NA (NA)
Population 20 To 64 Years with a disability	NA (NA)	NA (NA)	NA (NA)	20,580 (10.51%)

Educational Attainment Trends - Sarasota

Age 25 and Over

Description	1990	2000	2010 (ACS)	2017 (ACS)
Less than 9th Grade	12,282 (5.65%)	8,674 (3.38%)	7,622 (2.60%)	8,201 (2.55%)
9th to 12th Grade, No Diploma	28,473 (13.10%)	24,490 (9.54%)	19,852 (6.76%)	15,808 (4.92%)
High School Graduate or Higher	176,620 (81.25%)	223,638 (87.09%)	266,088 (90.64%)	297,117 (92.52%)
Bachelor's Degree or Higher	47,681 (21.93%)	70,446 (27.43%)	85,375 (29.08%)	108,780 (33.87%)

Language Trends - Sarasota

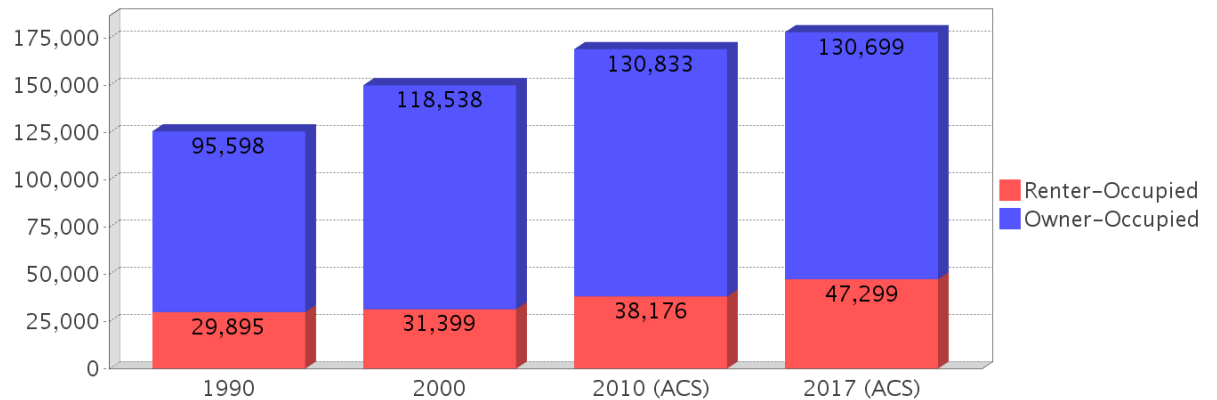
Age 5 and Over

Description	1990	2000	2010 (ACS)	2017 (ACS)
Speaks English Well	4,415 (1.67%)	7,341 (2.34%)	8,629 (2.39%)	12,559 (3.22%)
Speaks English Not Well	NA (NA)	4,388 (1.40%)	6,973 (1.93%)	6,818 (1.75%)
Speaks English Not at All	NA (NA)	1,482 (0.47%)	2,335 (0.65%)	1,283 (0.33%)
Speaks English Not Well or Not at All	2,132 (0.80%)	5,870 (1.87%)	9,308 (2.58%)	8,101 (2.08%)

Housing Trends - Sarasota

Description	1990	2000	2010 (ACS)	2017 (ACS)
Total	157,055	182,467	225,913	234,414
Units per Acre	0.424	0.493	0.61	0.633
Single-Family Units	83,700	116,036	149,688	153,905
Multi-Family Units	26,191	46,025	55,344	58,371
Mobile Home Units	14,512	20,226	20,731	21,893
Owner-Occupied Units	95,598	118,538	130,833	130,699
Renter-Occupied Units	29,895	31,399	38,176	47,299
Vacant Units	31,562	32,530	56,904	56,416
Median Housing Value	\$86,900	\$112,000	\$235,100	\$215,300
Occupied Housing Units w/No Vehicle	7,773 (6.19%)	8,975 (5.99%)	9,848 (5.83%)	9,454 (5.31%)

Housing Tenure - Sarasota



County Data Sources

Demographic data reported is from the U.S. Decennial Census (1990, 2000) and the American Community Survey (ACS) 5-year estimates from 2006-2010 and 2013-2017. The data was gathered at the county level. Depending on the dataset, the data represents 100% counts (Census Summary File 1) or sample-based information (Census Summary File 3 or ACS).

About the Census Data:

Use caution when comparing the 100% count data (Decennial Census) to the sample-based data (ACS). In any given year, about one in 40 or 2.5% of U.S. households will receive the ACS questionnaire. Over any five-year period, about one in eight households will receive the questionnaire, as compared to about one in six that received the long form questionnaire for the Decennial Census 2000. (Source: <http://mcdc.missouri.edu/pub/data/acs/Readme.shtml>) The U.S. Census Bureau provides help with this process:

<https://www.census.gov/programs-surveys/acs/guidance/comparing-acs-data/2017.html>

Use caution when interpreting changes in Race and Ethnicity over time. Starting with the 2000 Decennial Census, respondents were given a new option of selecting one or more race categories. Also in 2000, the placement of the question about Hispanic origin changed, helping to increase responsiveness to the Hispanic-origin question. Because of these and other changes, the 1990 data on race and ethnicity are not directly comparable with data from later censuses. (Source: <http://www.census.gov/prod/2001pubs/c2kbr01-1.pdf>; <http://www.census.gov/pred/www/rpts/Race%20and%20Ethnicity%20FINAL%20report.pdf>)

The "Minority" calculations are derived from Census and ACS data using both the race and ethnicity responses. On this report, "Minority" refers to individuals who list a race other than White and/or list their ethnicity as Hispanic/Latino. In other words, people who are multi-racial, any single race other than White, or Hispanic/Latino of any race are considered minorities.

Disability data is not included in the 2010 Decennial Census, or the 2006-2010 ACS. This data is available in the 2013-2017 ACS.

Because of changes made to the Census and ACS questions between 1990 and 2017, disability variables should not be compared from year to year. For example: 1) With the 1990 data the disabilities are listed as a "work disability" while this distinction is not made with 2000 or 2017 ACS data; 2) The 2017 ACS data includes the institutionalized population (e.g. persons in prisons and group homes), while this population is not included in 1990 or 2000; 3) the age groupings changed over the years.

Please take the following two concerns into account when viewing this data: 1) With the 1990 data the disabilities are listed as a "work disability" while this distinction is not made with 2000 or 2017 ACS data; 2) The 2017 ACS data includes the institutionalized population (e.g. persons in prisons and group homes), while this population is not included in 1990 or 2000.

source:

<https://www.census.gov/people/disability/methodology/acs.html>

<https://www.census.gov/population/www/cen2000/90vs00/index.html>

The category Bachelor's Degree or Higher under the heading Educational Attainment Trends is a subset of the category High School Graduate or Higher.

Metadata

- Community and Fraternal Centers https://etdmpub.florida-et.org/metadata/gc_communitycenter.htm
- Correctional Facilities in Florida https://etdmpub.florida-et.org/metadata/gc_correctional.htm
- Cultural Centers in Florida https://etdmpub.florida-et.org/metadata/gc_culturecenter.htm
- Fire Department and Rescue Station Facilities in Florida https://etdmpub.florida-et.org/metadata/gc_firestat.htm
- Local, State, and Federal Government Buildings in Florida https://etdmpub.florida-et.org/metadata/gc_govbuild.htm
- Florida Health Care Facilities https://etdmpub.florida-et.org/metadata/gc_health.htm
- Hospital Facilities in Florida https://etdmpub.florida-et.org/metadata/gc_hospitals.htm
- Law Enforcement Facilities in Florida https://etdmpub.florida-et.org/metadata/gc_lawenforce.htm
- Florida Parks and Recreational Facilities https://etdmpub.florida-et.org/metadata/gc_parks.htm
- Religious Centers https://etdmpub.florida-et.org/metadata/gc_religion.htm
- Florida Public and Private Schools https://etdmpub.florida-et.org/metadata/gc_schools.htm
- Social Service Centers https://etdmpub.florida-et.org/metadata/gc_socialservice.htm
- Assisted Rental Housing Units in Florida https://etdmpub.florida-et.org/metadata/gc_assisted_housing.htm
- Group Care Facilities <https://etdmpub.florida-et.org/metadata/groupcare.htm>
- Mobile Home Parks in Florida https://etdmpub.florida-et.org/metadata/gc_mobilehomes.htm
- Migrant Camps in Florida <https://etdmpub.florida-et.org/metadata/migrant.htm>
- Veteran Organizations and Facilities https://etdmpub.florida-et.org/metadata/gc_veterans.htm
- Generalized Land Use - Florida DOT District 1 https://etdmpub.florida-et.org/metadata/d1_lu_gen.htm
- Census Block Groups in Florida https://etdmpub.florida-et.org/metadata/e2_cenacs_cci.htm
- 1990 Census Block Groups in Florida https://etdmpub.florida-et.org/metadata/e2_cenblkgrp_1990_cci.htm
- 2000 Census Block Groups in Florida https://etdmpub.florida-et.org/metadata/e2_cenblkgrp_2000_cci.htm
- 2010 Census Block Groups in Florida https://etdmpub.florida-et.org/metadata/e2_cenblkgrp_2010_cci.htm