

# Sociocultural Data Report

## Springfield

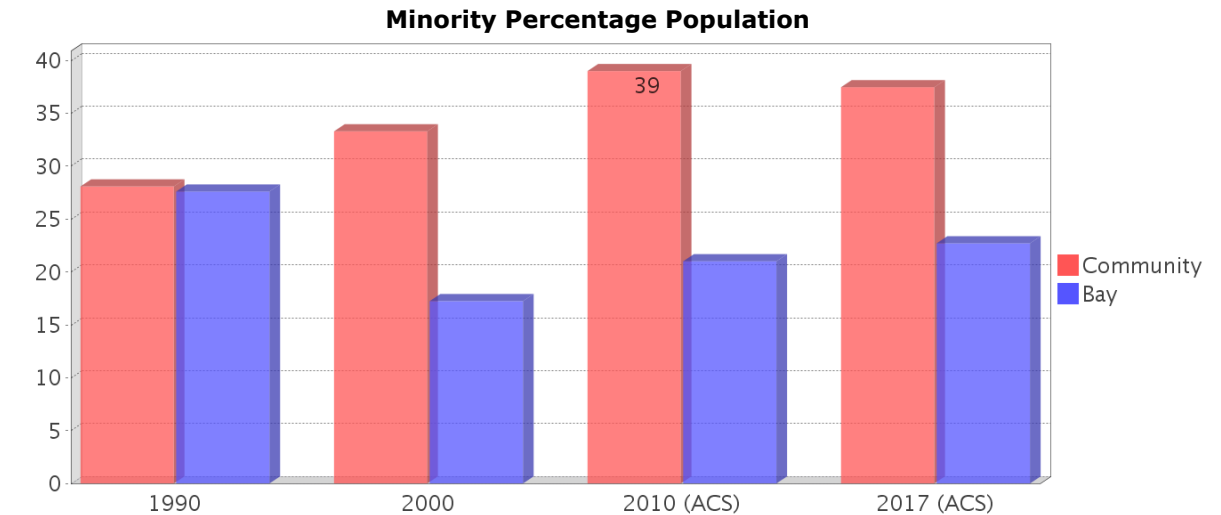
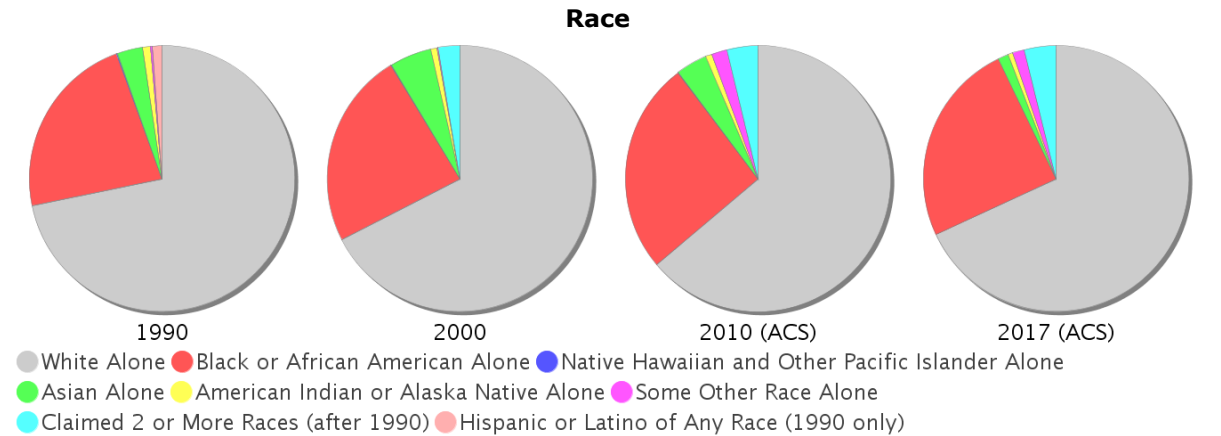
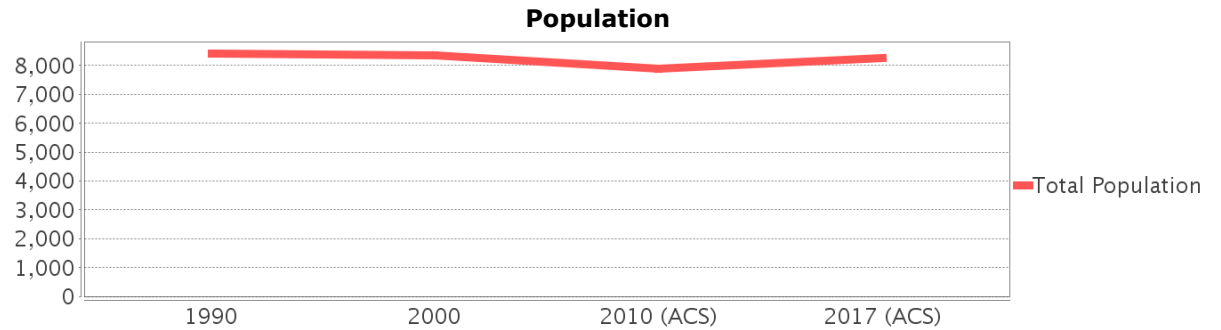
**Area:** 4.552 square miles  
**Jurisdiction(s):** **Cities:** Parker, Callaway, Panama City, Springfield  
**Counties:** Bay

## General Population Trends

Description	1990	2000	2010 (ACS)	2017 (ACS)
Total Population	8,410	8,360	7,888	8,261
Total Households	3,111	3,200	2,993	2,857
Average Persons per Acre	3.30	3.72	3.50	3.45
Average Persons per Household	2.58	2.54	2.67	2.84
Average Persons per Family	3.13	3.13	3.00	3.67
Males	4,020	3,983	3,805	4,071
Females	4,389	4,377	4,082	4,190

## Race and Ethnicity Trends

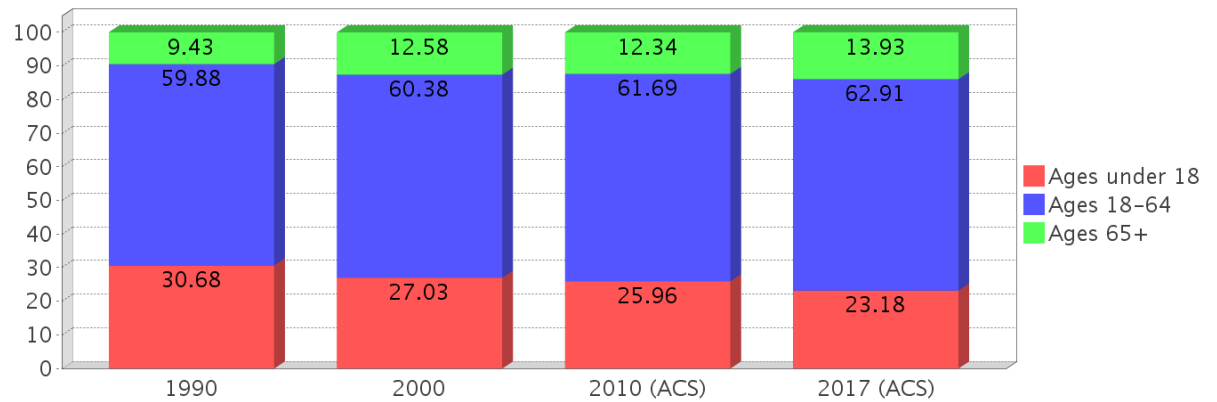
Description	1990	2000	2010 (ACS)	2017 (ACS)
White Alone	6,105 (72.59%)	5,642 (67.49%)	5,035 (63.83%)	5,623 (68.07%)
Black or African American Alone	1,925 (22.89%)	1,990 (23.80%)	2,040 (25.86%)	2,046 (24.77%)
Native Hawaiian and Other Pacific Islander Alone	11 (0.13%)	7 (0.08%)	6 (0.08%)	0 (0.00%)
Asian Alone	268 (3.19%)	427 (5.11%)	298 (3.78%)	107 (1.30%)
American Indian or Alaska Native Alone	77 (0.92%)	66 (0.79%)	61 (0.77%)	49 (0.59%)
Some Other Race Alone	25 (0.30%)	11 (0.13%)	149 (1.89%)	117 (1.42%)
Claimed 2 or More Races	NA (NA)	219 (2.62%)	300 (3.80%)	319 (3.86%)
Hispanic or Latino of Any Race	95 (1.13%)	149 (1.78%)	443 (5.62%)	592 (7.17%)
Not Hispanic or Latino	8,315 (98.87%)	8,211 (98.22%)	7,445 (94.38%)	7,669 (92.83%)
Minority	2,362 (28.09%)	2,784 (33.30%)	3,076 (39.00%)	3,096 (37.48%)



### Age Trends

Description	1990	2000	2010 (ACS)	2017 (ACS)
Under Age 5	8.83%	7.33%	7.71%	7.14%
Ages 5-17	21.84%	19.70%	18.26%	16.04%
Ages 18-21	6.21%	5.87%	5.90%	4.60%
Ages 22-29	13.22%	10.62%	11.02%	14.39%
Ages 30-39	14.88%	15.35%	12.82%	11.72%
Ages 40-49	11.25%	11.26%	13.87%	12.34%
Ages 50-64	14.33%	17.28%	18.09%	19.86%
Age 65 and Over	9.43%	12.58%	12.34%	13.93%
-Ages 65-74	6.25%	8.48%	6.93%	9.01%
-Ages 75-84	2.76%	3.65%	4.42%	3.75%
-Age 85 and Over	0.42%	0.47%	0.99%	1.16%
Median Age	NA	34	34	36

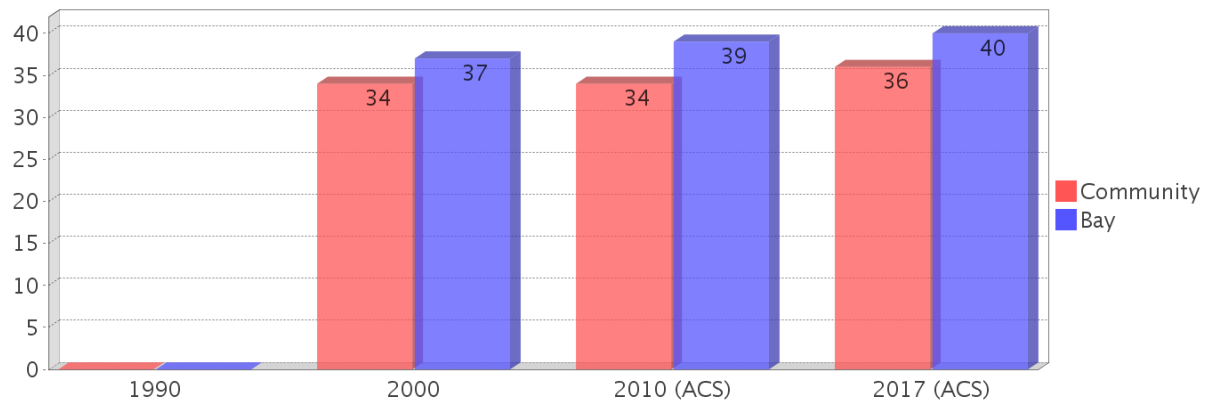
### Percentage Population by Age Group



### Income Trends

Description	1990	2000	2010 (ACS)	2017 (ACS)
Median Household Income	\$19,600	\$27,778	\$38,822	\$38,846
Median Family Income	\$23,599	\$31,469	\$43,058	\$45,057
Population below Poverty Level	25.23%	21.03%	18.93%	27.13%
Households below Poverty Level	25.65%	21.09%	17.84%	24.05%
Households with Public Assistance Income	14.34%	8.84%	5.65%	2.84%

### Median Age Comparison

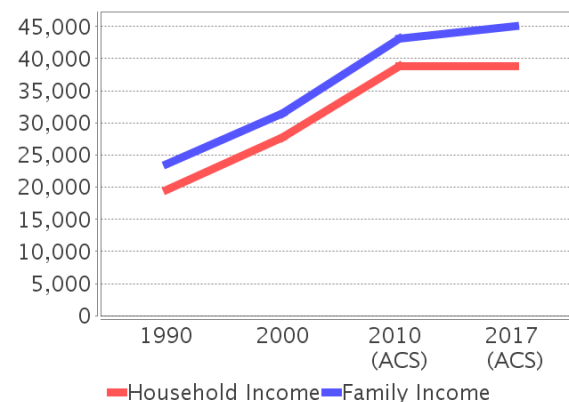


### Disability Trends

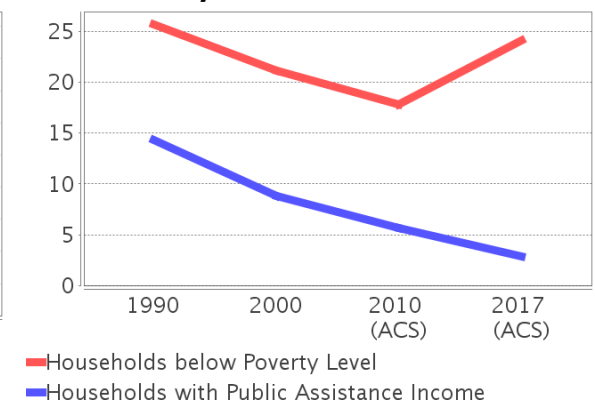
See the Data Sources section below for an explanation about the differences in disability data among the various years.

Description	1990	2000	2010 (ACS)	2017 (ACS)
Population 16 To 64 Years with a disability	904 (15.24%)	1449 (19.15%)	(NA)	(NA)
Population 20 To 64 Years with a disability	(NA)	(NA)	(NA)	1153 (23.01%)

### Income Trends



### Poverty and Public Assistance



## Educational Attainment Trends

Age 25 and Over

Description	1990	2000	2010 (ACS)	2017 (ACS)
Less than 9th Grade	841 (17.01%)	554 (10.36%)	553 (9.92%)	294 (5.55%)
9th to 12th Grade, No Diploma	1,114 (22.53%)	1,147 (21.45%)	788 (14.14%)	859 (16.23%)
High School Graduate or Higher	2,991 (60.49%)	3,645 (68.17%)	4,232 (75.94%)	4,141 (78.22%)
Bachelor's Degree or Higher	202 (4.08%)	409 (7.65%)	466 (8.36%)	509 (9.61%)

## Language Trends

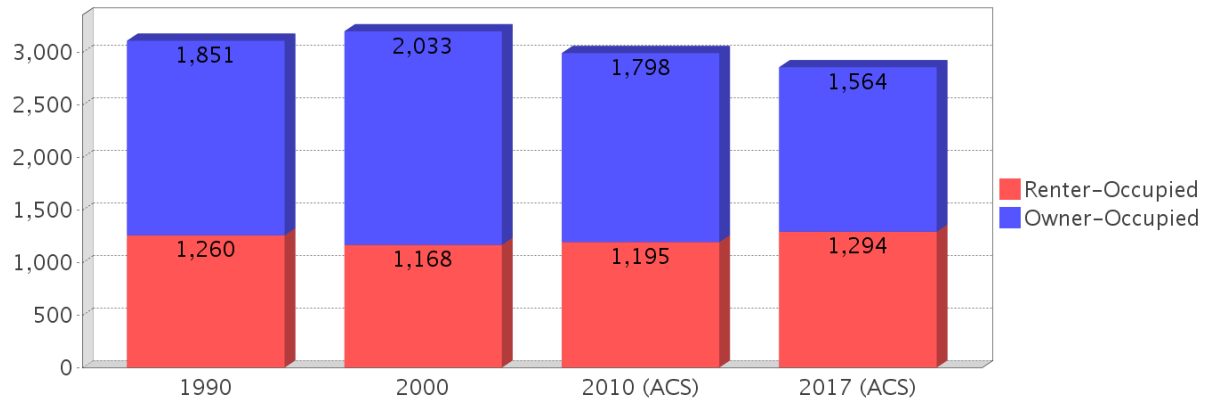
Age 5 and Over

Description	1990	2000	2010 (ACS)	2017 (ACS)
Speaks English Well	69 (0.90%)	117 (1.51%)	120 (1.51%)	62 (0.81%)
Speaks English Not Well	NA (NA)	150 (1.94%)	201 (2.52%)	99 (1.29%)
Speaks English Not at All	NA (NA)	25 (0.32%)	20 (0.25%)	73 (0.95%)
Speaks English Not Well or Not at All	117 (1.53%)	175 (2.26%)	221 (2.77%)	172 (2.24%)

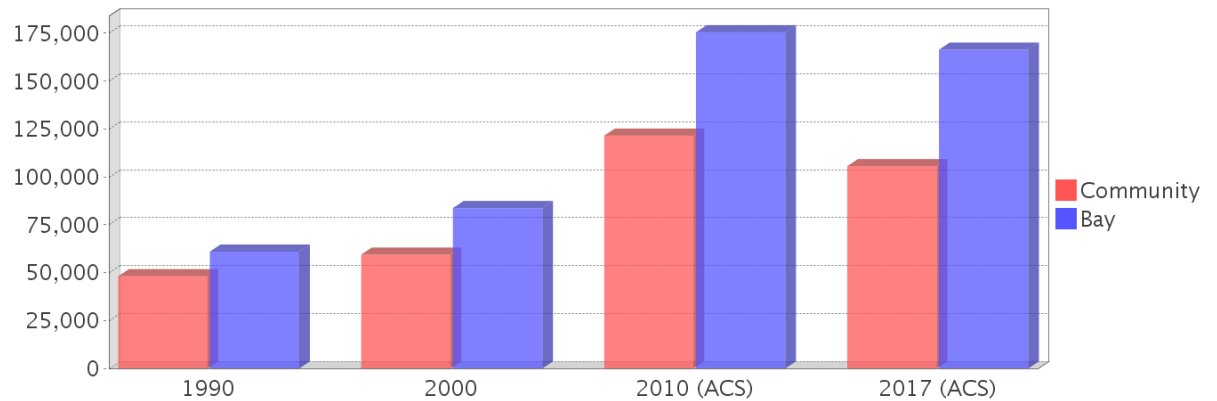
## Housing Trends

Description	1990	2000	2010 (ACS)	2017 (ACS)
Total	3,542	3,681	3,683	3,410
Units per Acre	1.66	1.63	1.57	1.45
Single-Family Units	1,897	2,181	2,605	2,093
Multi-Family Units	473	599	617	578
Mobile Home Units	721	889	992	602
Owner-Occupied Units	1,851	2,033	1,798	1,564
Renter-Occupied Units	1,260	1,168	1,195	1,294
Vacant Units	431	480	690	552
Median Housing Value	\$48,150	\$59,400	\$121,500	\$105,600
Occupied Housing Units w/No Vehicle	400 (12.86%)	352 (11.00%)	180 (6.01%)	428 (14.98%)

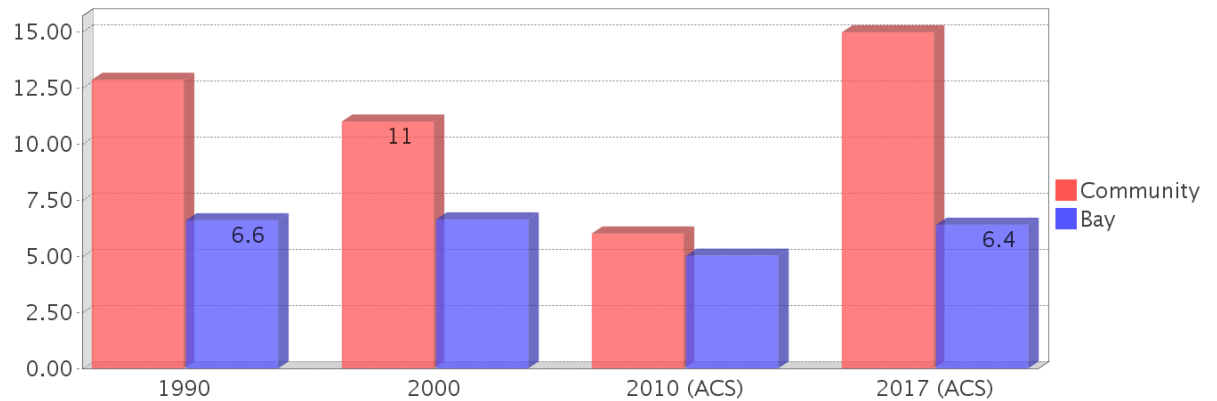
## Housing Tenure



## Median Housing Value Comparison

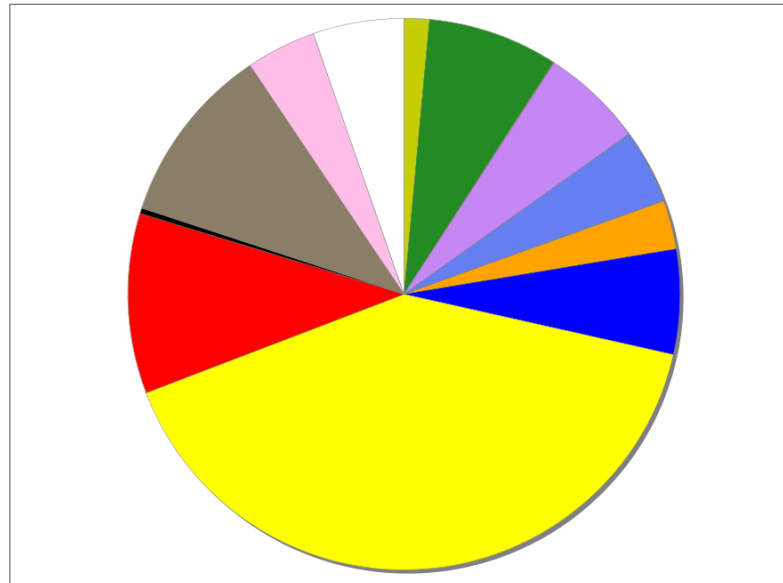


## Occupied Units With No Vehicles Available



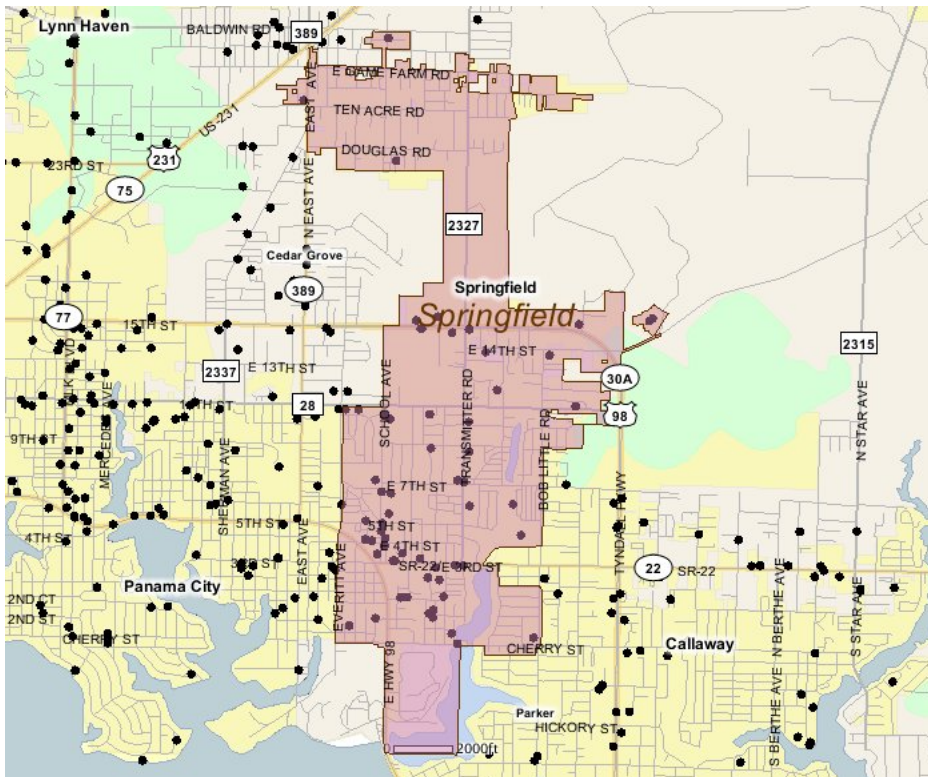
## Existing Land Use

Land Use Type	Acres	Percentage
Acreage Not Zoned For Agriculture	37	1.27%
Agricultural	193	6.62%
Centrally Assessed	1	0.03%
Industrial	152	5.22%
Institutional	110	3.78%
Mining	0	0.00%
Other	72	2.47%
Public/Semi-Public	155	5.32%
Recreation	0	0.00%
Residential	1,027	35.25%
Retail/Office	266	9.13%
Row	8	0.27%
Vacant Residential	266	9.13%
Vacant Nonresidential	103	3.54%
Water	0	0.00%
Parcels With No Values	135	4.63%



- Acreage Not Zoned For Agriculture
- Agricultural
- Centrally Assessed
- Industrial
- Institutional
- Mining
- Other
- Public/Semi-Public
- Recreation
- Residential
- Retail/Office
- Row
- Vacant Residential
- Vacant Nonresidential
- Water
- Parcels With No Values

## Location Maps



---

## Community Facilities

The community facilities information below is useful in a variety of ways for environmental evaluations. These community resources should be evaluated for potential sociocultural effects, such as accessibility and relocation potential. The facility types may indicate the types of population groups present in the project study area. Facility staff and leaders can be sources of community information such as who uses the facility and how it is used. Additionally, community facilities are potential public meeting venues.

### Assisted Housing (Points)

Facility Name	Address	Zip Code
GIBB SPRINGFIELD VILLAGE	3301-3407 E 4TH ST	32401

### Community Boundaries (User defined)

Facility Name
Business 98 Community
Unincorporated
Panama City Incorporated

### Community Centers (Points)

Facility Name	Address	Zip Code
KNIGHTS OF COLUMBUS 3599 - FATHER JOSEPH M BAKER	3308 E 15TH ST	32405

### Cultural Centers (Points)

Facility Name	Address	Zip Code
SPRINGFIELD LIBRARY	408 SCHOOL AVE	32401

### Fire Stations (Points)

Facility Name	Address	Zip Code
SPRINGFIELD FIRE DEPARTMENT	3726 E 3RD ST	32401

### Florida Parks and Recreational Facilities (Points)

Facility Name	Address	Zip Code
BUDDY MCLEMORE PARK	246 DETROIT AVE	32401
SPRINGFIELD GARDENS WALKING PARK	TRANSMITTER RD & 7TH ST	32404
SPRINGFIELD SPORTS COMPLEX_PART 2	4901 SPORTS LN	32404
CHERRY STREET LANDING & BOAT RAMP	CHERRY ST	32404
HENRY BROOKS MEMORIAL PARK	301 KILBOURNE AVE	32401
SPRINGFIELD SPORTS COMPLEX	405 HWY 22A N	32404

### Government Building

Facility Name	Address	Zip Code
U S POST OFFICE - CPU SPRINGFIELD	3213 E HIGHWAY 98	32401
CITY OF SPRINGFIELD CITY HALL	3529 E 3RD ST	32401

### Healthcare Facilities (Geocoded)

Facility Name	Address	Zip Code
BAY COUNTY DENTAL CLINIC	3518 E 15TH STREET	32401
CLIFFORD CHESTER SIMS STATE VETERANS NURSING HOME	4419 TRAM ROAD	32404
BAY COUNTY WIC PROGRAM - SPRINGFIELD BRANCH	408 SCHOOL AVENUE	32401
KEITH B. BANTON, MD PA	3230 E 15TH STREET B	32405
THE FAMILY CLINIC	3232 E 15TH STREET	32405
SPRINGFIELD MEDICAL CENTER	3808 E 3RD STREET	32401
COASTAL ALLERGY & ASTHMA P.A.	3228 E 15TH STREET	32404
BRIGHT PEDIATRICS	3520 E 15TH STREET	32404

## Law Enforcement Facilities (Points)

Facility Name	Address	Zip Code
SPRINGFIELD CITY POLICE DEPARTMENT	3529 E 3RD ST	32401

## Mobile Home Parks in Florida

Facility Name	Address	Zip Code
PANAMA CITY MOBILE EST	700 TRANSMITTER RD	32401
DOUGLAS ROAD MOBILE HOME PARK	2318 S DALE AVE	32405
BAY OAKS VILLAGE MOBILE HOME PARK	409 SCHOOL AVE	32401

## Public and Private Schools (Points)

Facility Name	Address	Zip Code
RUTHERFORD HIGH SCHOOL	1000 SCHOOL AVE	32401
SPRINGFIELD ELEMENTARY SCHOOL	520 SCHOOL AVE	32401
EVERITT MIDDLE SCHOOL	608 SCHOOL AVE	32401

## Religious Centers (Points)

Facility Name	Address	Zip Code
FAMILY LIFE MINISTRIES	900 TRANSMITTER RD	32401
CATHOLIC CHARITIES	3128 11TH ST E	32401
GREATER PRAISE & DELIVERANCE	227 CLAIRE AVENUE	32401
FREE SPIRIT COMMUNITY CHURCH	3706 E 11TH STREET	32401
LIGHTHOUSE BAPTIST CHURCH (PARKERWAY BAPTIST)	3323 E 15TH STREET	32405
2ND MT MORIAH BAPTIST CHURCH	3808 E 1ST COURT	32401
HOUSE OF PRAYER	3414 15TH ST E	32401
SPRINGFIELDS COMMUNITY CHURCH	3823 VILLAGE DRIVE	32401
EAST SIDE ASSEMBLY OF GOD	3610 E 14TH STREET	32404
ST DOMINIC CATHOLIC CHURCH	3308 15TH ST E	32405
SPRINGFIELD BAPTIST CHURCH	3615 E 3RD STREET	32401
GROVE TEMPLE FIRST BORN CHURCH	157 HARLEM AVENUE	32401
HILAND PARK ASSEMBLY OF GOD	2617 N EAST AVENUE	32405
SPRINGFIELD UNITED METHODIST	701 SCHOOL AVENUE	32401
FIRST MT MORIAH BAPTIST CHURCH	3401 SAINT JOHN STREET	32401
IGLESIA CRISTIANA PENTECOSTES	318 SCHOOL AVE	32401
LIVING WORD OF FAITH	147 HARLEM AVE	32401
REORGANIZED CHURCH OF JESUS	3901 8TH ST E	32404
MIDWAY BAPTIST CHURCH	5008 E 14TH ST	32404
ST PATRICK'S EPISCOPAL CHURCH	4025 EAST 15TH STREET (E OF TRANSMITTER)	32404
LOVE CENTER MISSIONARY BAPTIST	3100 E 11TH STREET	32401
BAY HARBOR COMMUNITY CHURCH	124 POSTON AVE	32401
PRAISE & WORSHIP FELLOWSHIP CENTER	3129 5TH ST E	32401
SAINT PAUL AFRICAN METHODIST EPISCOPAL CHURCH	3517 SECOND STREET	32401
HOLY VESSEL OUTREACH MINISTRY	142 CLAIRE AVE	32401
CHURCH OF GOD IN CHRIST	3501 E 2ND STREET	32401
NEW GULF COAST ASSOCIATES	209 DETROIT AVENUE	32401
SPRINGFIELD COMMUNITY CHURCH	1101 J W HUNT BOULEVARD	32404
CHURCH OF GOD OF PROPHECY - GRACE FELLOWSHIP	117 N HIGHWAY 22 A	32404
PROVIDENCE FULL GOSPEL METHODIST EPISCOPAL CHURCH	5209 EAST 11TH STREET	32404

## Social Services (Geocoded)

Facility Name	Address	Zip Code
AMERICORPS GOODWILL GOODWORKS	3207 E. 4TH STREET	32401
SPRINGFIELD_BOTH_HA CODE: FL035	3806 E 8TH STREET	32401

## US Census Places

Facility Name
Springfield

**Facility Name**

Cedar Grove

Parker

Callaway

Panama City

**Veteran Organizations and Facilities (Points)****Facility Name****Address****Zip Code**CLIFFORD C. SIMS STATE VETERANS NURSING  
HOME

4419 TRAM RD

32404

---

## Block Groups

The following Census Block Groups were used to calculate demographics for this report.

### 1990 Census Block Groups

120050012001, 120050011002, 120050010003, 120050013002, 120050010001, 120050010002, 120050008002, 120050011001, 120050005001, 120050011003, 120050013004, 120050018001, 120050013005, 120050009002, 120050009001

### 2000 Census Block Groups

120050011002, 120050008012, 120050013005, 120050011001, 120050013004, 120050012001, 120050009002, 120050010002, 120050018001, 120050010001, 120050005001, 120050011003, 120050009001

### 2010 Census Block Groups

120050018001, 120050008032, 120050010001, 120050011002, 120050009003, 120050009002, 120050012001, 120050011003, 120050013023, 120050011001, 120050005001, 120050010002, 120050012002, 120050013022

### 2017 Census Block Groups

120050005001, 120050010002, 120050013023, 120050009002, 120050012002, 120050009003, 120050013022, 120050008032, 120050011003, 120050011001, 120050010001, 120050011002, 120050018001, 120050012001

---

## Data Sources

### Area

The geographic area of the community based on a user-specified community boundary or area of interest (AOI) boundary.

### Jurisdiction

Jurisdiction(s) includes local government boundaries that intersect the community or AOI boundary.

### Demographic Data

Demographic data reported under the headings General Population Trends, Race and Ethnicity Trends, Age Trends, Income Trends, Educational Attainment Trends, Language Trends, and Housing Trends is from the U.S. Decennial Census (1990, 2000) and the American Community Survey (ACS) 5-year estimates from 2006-2010 and 2013-2017. The data was gathered at the block group level for user-specified community boundaries and AOIs, and at the county level for counties. Depending on the dataset, the data represents 100% counts (Census Summary File 1) or sample-based information (Census Summary File 3 or ACS).

### About the Census Data:

User-specified community boundaries and AOIs do not always correspond precisely to block group boundaries. In these instances, adjustment of the geographic area and data for affected block groups is required to estimate the actual population. To improve the accuracy of such estimates in the SDR report, the census block group data was adjusted to exclude all census blocks with a population of two or fewer. These areas were eliminated from the corresponding years' block groups. Next, the portion of the block group that lies outside of the community or AOI boundary was removed. The demographics within each block group were then recalculated, assuming an equal area distribution of the population. Note that there may be areas where there is no population.

Use caution when comparing the 100% count data (Decennial Census) to the sample-based data (ACS). In any given year, about one in 40 or 2.5% of U.S. households will receive the ACS questionnaire. Over any five-year period, about one in eight households will receive the questionnaire, as compared to about one in six that received the long form questionnaire for the Decennial Census 2000. (Source: <http://mcdc.missouri.edu/pub/data/acs/Readme.shtml>) The U.S. Census Bureau provides help with this process:

<https://www.census.gov/programs-surveys/acs/guidance/comparing-acs-data/2017.html>

Use caution when interpreting changes in Race and Ethnicity over time. Starting with the 2000 Decennial Census, respondents were given a new option of selecting one or more race categories. Also in 2000, the placement of the question about Hispanic origin changed, helping to increase responsiveness to the Hispanic-origin question. Because of these and other changes, the 1990 data on race and ethnicity are not directly comparable with data from later censuses.

(Source: <http://www.census.gov/prod/2001pubs/c2kbr01-1.pdf>;

<http://www.census.gov/pred/www/rpts/Race%20and%20Ethnicity%20FINAL%20report.pdf>)

The "Minority" calculations are derived from Census and ACS data using both the race and ethnicity responses. On this report, "Minority" refers to individuals who list a race other than White and/or list their ethnicity as Hispanic/Latino. In other words, people who are multi-racial, any single race other than White, or Hispanic/Latino of any race are considered minorities.

Disability data is not included in the 2010 Decennial Census, or the 2006-2010 ACS. This data is available in the 2013-2017 ACS.

Because of changes made to the Census and ACS questions between 1990 and 2017, disability variables should not be compared from year to year. For example: 1) With the 1990 data the disabilities are listed as a "work disability" while this distinction is not made with 2000 or 2017 ACS data; 2) The 2017 ACS data includes the institutionalized population (e.g. persons in prisons and group homes), while this population is not included in 1990 or 2000; 3) the age groupings changed over the years.

Please take the following two concerns into account when viewing this data: 1) With the 1990 data the disabilities are listed as a "work disability" while this distinction is not made with 2000 or 2017 ACS data; 2) The 2017 ACS data includes the institutionalized population (e.g. persons in prisons and group homes), while this population is not included in 1990 or 2000.

The category Bachelor's Degree or Higher under the heading Educational Attainment Trends is a subset of the category High School Graduate or Higher.

Income of households. This includes the income of the householder and all other individuals 15 years old and over in the household, whether they are related to the householder or not. Because many households consist of only one person, average household income is usually less than average family income.

Income of families. In compiling statistics on family income, the incomes of all members 15 years old and over related to the householder are summed and treated as a single amount.

Age Trends median age for 1990 is not available.

### **Land Use Data**

The Land Use information Indicates acreages and percentages for the generalized land use types used to group parcel-specific, existing land use assigned by the county property appraiser office according to the Florida Department of Revenue land use codes.

### **Community Facilities Data**

- Assisted Rental Housing Units - Identifies multifamily rental developments that receive funding assistance under federal, state, and local government programs to offer affordable housing as reported by the Shimberg Center for

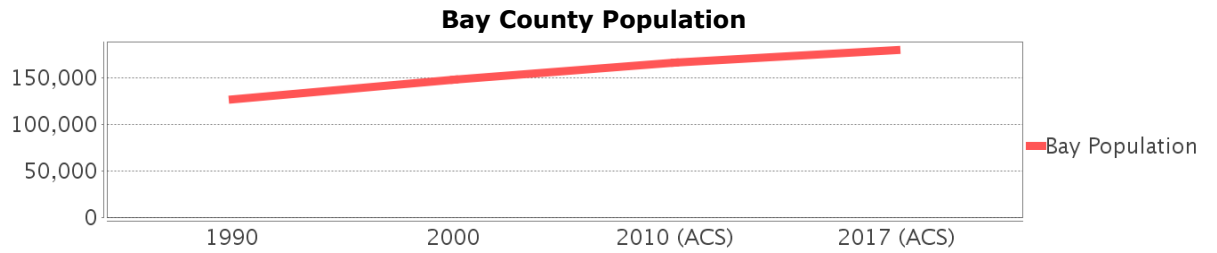
Housing Studies, University of Florida.

- Mobile Home Parks - Identifies approved or acknowledged mobile home parks reported by the Florida Department of Business and Professional Regulation and Florida Department of Health.
- Migrant Camps - Identifies migrant labor camp facilities inspected by the Florida Department of Health.
- Group Care Facilities - Identifies group care facilities inspected by the Florida Department of Health.
- Community Center and Fraternal Association Facilities - Identifies facilities reported by multiple sources.
- Law Enforcement Correctional Facilities - Identifies facilities reported by multiple sources.
- Cultural Centers - Identifies cultural centers including organizations, buildings, or complexes that promote culture and arts (e.g., aquariums and zoological facilities; arboreta and botanical gardens; dinner theaters; drive-ins; historical places and services; libraries; motion picture theaters; museums and art galleries; performing arts centers; performing arts theaters; planetariums; studios and art galleries; and theater producers stage facilities) reported by multiple sources.
- Fire Department and Rescue Station Facilities - Identifies facilities reported by multiple sources.
- Government Buildings - Identifies local, state, and federal government buildings reported by multiple sources.
- Health Care Facilities - Identifies health care facilities including abortion clinics, dialysis clinics, medical doctors, nursing homes, osteopaths, state laboratories/clinics, and surgicenters/walk-in clinics reported by the Florida Department of Health.
- Hospital Facilities - Identifies hospital facilities reported by multiple sources.
- Law Enforcement Facilities - Identifies law enforcement facilities reported by multiple sources.
- Parks and Recreational Facilities - Identifies parks and recreational facilities reported by multiple sources.
- Religious Center Facilities - Identifies religious centers including churches, temples, synagogues, mosques, chapels, centers, and other types of religious facilities reported by multiple sources.
- Private and Public Schools - Identifies private and public schools reported by multiple sources.
- Social Service Centers - Identifies social service centers reported by multiple sources.
- Veteran Organizations and Facilities

# Bay County Demographic Profile

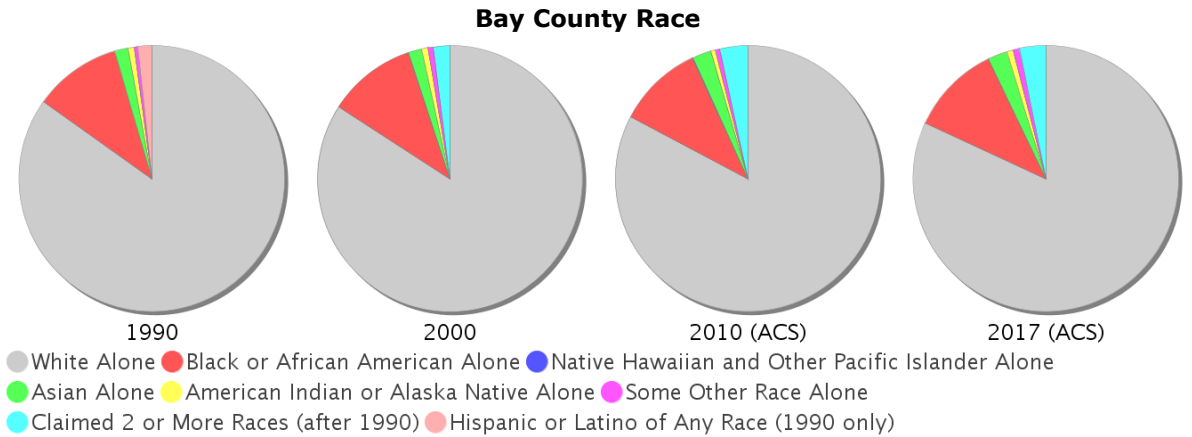
## General Population Trends - Bay

Description	1990	2000	2010 (ACS)	2017 (ACS)
Total Population	126,994	148,217	166,798	180,117
Total Households	48,938	59,597	68,807	68,667
Average Persons per Acre	0.257	0.299	0.336	0.363
Average Persons per Household	2.595	2.431	2.00	2.59
Average Persons per Family	3.04	2.995	2.962	3.30
Males	62,562	73,124	82,893	89,542
Females	64,432	75,093	83,905	90,575



## Race and Ethnicity Trends - Bay

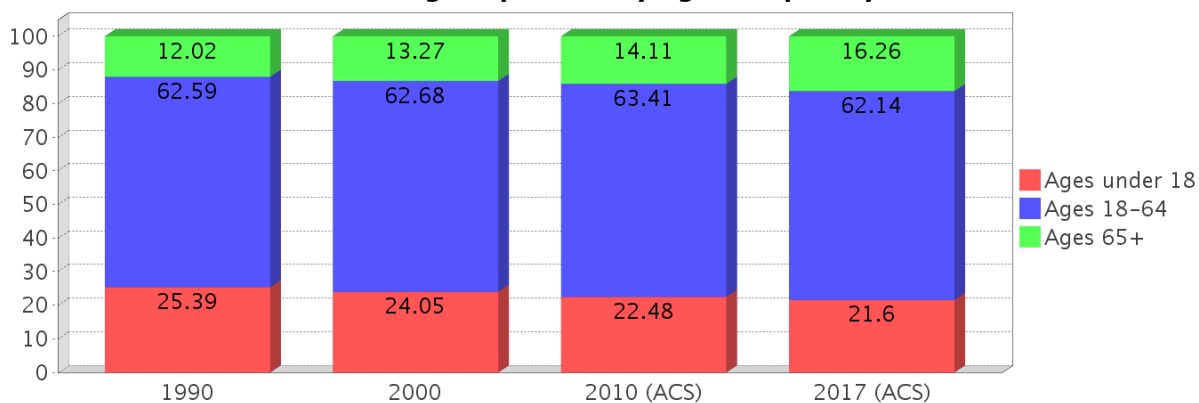
Description	1990	2000	2010 (ACS)	2017 (ACS)
White Alone	109,570 (86.28%)	124,681 (84.12%)	137,959 (82.71%)	147,474 (81.88%)
Black or African American Alone	13,713 (10.80%)	15,944 (10.76%)	17,354 (10.40%)	19,740 (10.96%)
Native Hawaiian and Other Pacific Islander Alone	(NA)	125 (0.08%)	186 (0.11%)	54 (0.03%)
Asian Alone	2,156 (1.70%)	2,369 (1.60%)	3,784 (2.27%)	4,196 (2.33%)
American Indian or Alaska Native Alone	949 (0.75%)	1,130 (0.76%)	923 (0.55%)	1,389 (0.77%)
Some Other Race Alone	533 (0.42%)	1,022 (0.69%)	919 (0.55%)	1,400 (0.78%)
Claimed 2 or More Races	(NA)	2,946 (1.99%)	5,673 (3.40%)	5,864 (3.26%)
Hispanic or Latino of Any Race	2,256 (1.78%)	3,534 (2.38%)	7,527 (4.51%)	10,820 (6.01%)
Not Hispanic or Latino	124,738 (98.22%)	144,683 (97.62%)	159,271 (95.49%)	169,297 (93.99%)
Minority	35,062 (27.61%)	25,554 (17.24%)	35,062 (21.02%)	40,909 (22.71%)



### Age Trends - Bay

Description	1990	2000	2010 (ACS)	2017 (ACS)
Under Age 5	7.26%	6.07%	6.39%	6.28%
Ages 5-17	18.14%	17.97%	16.09%	15.32%
Ages 18-21	5.71%	5.08%	5.85%	4.83%
Ages 22-29	13.13%	10.13%	10.47%	11.25%
Ages 30-39	16.57%	15.20%	12.94%	12.87%
Ages 40-49	12.55%	15.81%	14.89%	12.39%
Ages 50-64	14.63%	16.46%	19.27%	20.80%
Age 65 and Over	12.02%	13.27%	14.11%	16.26%
-Ages 65-74	7.69%	7.96%	7.91%	9.42%
-Ages 75-84	3.51%	4.22%	4.67%	4.99%
-Age 85 and Over	0.82%	1.09%	1.53%	1.85%
Median Age	NA	37	39	40

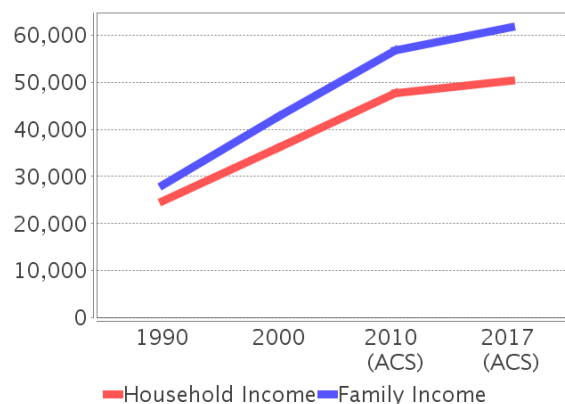
Percentage Population by Age Group - Bay



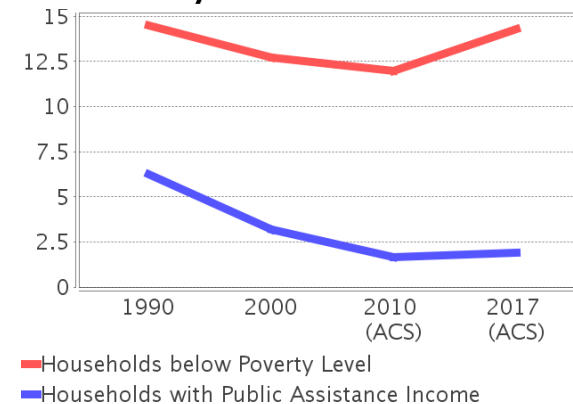
### Income Trends - Bay

Description	1990	2000	2010 (ACS)	2017 (ACS)
Median Household Income	\$24,684	\$36,092	\$47,770	\$50,283
Median Family Income	\$28,217	\$42,729	\$56,877	\$61,750
Population below Poverty Level	14.44%	13.04%	12.37%	15.35%
Households below Poverty Level	14.48%	12.69%	11.96%	14.31%
Households with Public Assistance Income	6.25%	3.20%	1.65%	1.93%

Income Trends



Poverty and Public Assistance



### Disability Trends - Bay

See the Data Sources section below for an explanation about the differences in disability data among the various years.

Description	1990	2000	2010 (ACS)	2017 (ACS)
Population 16 To 64 Years with a disability	8,863 (9.67%)	19,402 (14.60%)	NA (NA)	NA (NA)
Population 20 To 64 Years with a disability	NA (NA)	NA (NA)	NA (NA)	17,237 (16.15%)

## Educational Attainment Trends - Bay

Age 25 and Over

Description	1990	2000	2010 (ACS)	2017 (ACS)
Less than 9th Grade	7,497 (9.09%)	4,970 (4.98%)	4,525 (3.99%)	3,871 (3.08%)
9th to 12th Grade, No Diploma	13,384 (16.23%)	13,946 (13.98%)	10,973 (9.67%)	9,766 (7.77%)
High School Graduate or Higher	61,567 (74.67%)	80,855 (81.04%)	97,924 (86.34%)	112,006 (89.15%)
Bachelor's Degree or Higher	12,942 (15.70%)	17,636 (17.68%)	23,156 (20.42%)	28,085 (22.35%)

## Language Trends - Bay

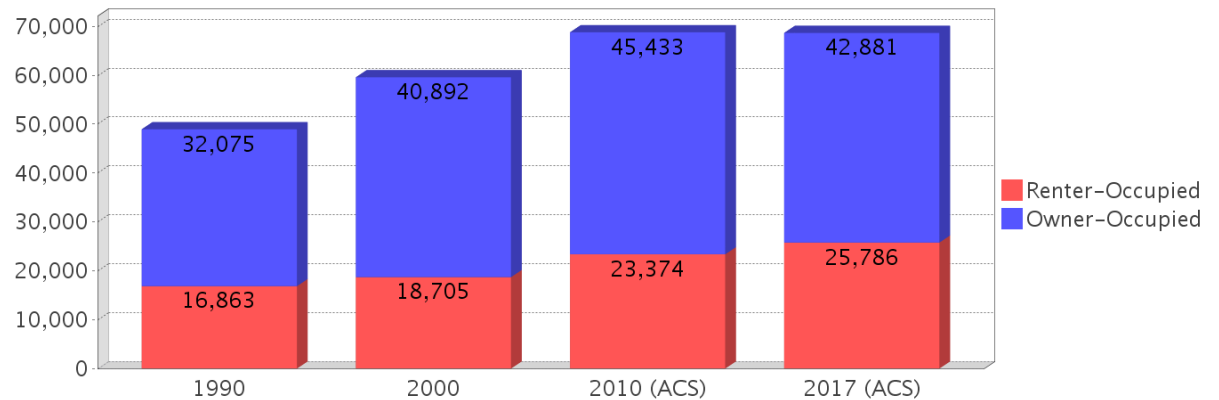
Age 5 and Over

Description	1990	2000	2010 (ACS)	2017 (ACS)
Speaks English Well	1,245 (1.06%)	1,734 (1.25%)	2,069 (1.33%)	2,331 (1.38%)
Speaks English Not Well	NA (NA)	1,134 (0.81%)	1,685 (1.08%)	1,660 (0.98%)
Speaks English Not at All	NA (NA)	88 (0.06%)	359 (0.23%)	376 (0.22%)
Speaks English Not Well or Not at All	757 (0.64%)	1,222 (0.88%)	2,044 (1.31%)	2,036 (1.21%)

## Housing Trends - Bay

Description	1990	2000	2010 (ACS)	2017 (ACS)
Total	65,999	78,435	98,291	101,437
Units per Acre	0.133	0.158	0.198	0.205
Single-Family Units	31,850	45,732	55,210	55,465
Multi-Family Units	8,658	19,549	29,871	32,243
Mobile Home Units	8,103	12,926	13,125	13,402
Owner-Occupied Units	32,075	40,892	45,433	42,881
Renter-Occupied Units	16,863	18,705	23,374	25,786
Vacant Units	17,061	18,838	29,484	32,770
Median Housing Value	\$61,000	\$83,700	\$175,500	\$166,400
Occupied Housing Units w/No Vehicle	3,229 (6.60%)	3,958 (6.64%)	3,453 (5.02%)	4,393 (6.40%)

## Housing Tenure - Bay



---

## County Data Sources

Demographic data reported is from the U.S. Decennial Census (1990, 2000) and the American Community Survey (ACS) 5-year estimates from 2006-2010 and 2013-2017. The data was gathered at the county level. Depending on the dataset, the data represents 100% counts (Census Summary File 1) or sample-based information (Census Summary File 3 or ACS).

### About the Census Data:

Use caution when comparing the 100% count data (Decennial Census) to the sample-based data (ACS). In any given year, about one in 40 or 2.5% of U.S. households will receive the ACS questionnaire. Over any five-year period, about one in eight households will receive the questionnaire, as compared to about one in six that received the long form questionnaire for the Decennial Census 2000. (Source: <http://mcdc.missouri.edu/pub/data/acs/Readme.shtml>) The U.S. Census Bureau provides help with this process:

<https://www.census.gov/programs-surveys/acs/guidance/comparing-acs-data/2017.html>

Use caution when interpreting changes in Race and Ethnicity over time. Starting with the 2000 Decennial Census, respondents were given a new option of selecting one or more race categories. Also in 2000, the placement of the question about Hispanic origin changed, helping to increase responsiveness to the Hispanic-origin question. Because of these and other changes, the 1990 data on race and ethnicity are not directly comparable with data from later censuses. (Source: <http://www.census.gov/prod/2001pubs/c2kbr01-1.pdf>;  
<http://www.census.gov/pred/www/rpts/Race%20and%20Ethnicity%20FINAL%20report.pdf>)

The "Minority" calculations are derived from Census and ACS data using both the race and ethnicity responses. On this report, "Minority" refers to individuals who list a race other than White and/or list their ethnicity as Hispanic/Latino. In other words, people who are multi-racial, any single race other than White, or Hispanic/Latino of any race are considered minorities.

Disability data is not included in the 2010 Decennial Census, or the 2006-2010 ACS. This data is available in the 2013-2017 ACS.

Because of changes made to the Census and ACS questions between 1990 and 2017, disability variables should not be compared from year to year. For example: 1) With the 1990 data the disabilities are listed as a "work disability" while this distinction is not made with 2000 or 2017 ACS data; 2) The 2017 ACS data includes the institutionalized population (e.g. persons in prisons and group homes), while this population is not included in 1990 or 2000; 3) the age groupings changed over the years.

Please take the following two concerns into account when viewing this data: 1) With the 1990 data the disabilities are listed as a "work disability" while this distinction is not made with 2000 or 2017 ACS data; 2) The 2017 ACS data includes the institutionalized population (e.g. persons in prisons and group homes), while this population is not included in 1990 or 2000.

source:

<https://www.census.gov/people/disability/methodology/acs.html>

<https://www.census.gov/population/www/cen2000/90vs00/index.html>

The category Bachelor's Degree or Higher under the heading Educational Attainment Trends is a subset of the category High School Graduate or Higher.

---

## Metadata

- Community and Fraternal Centers [https://etdmpub.florida-etat.org/metadata/gc\\_communitycenter.htm](https://etdmpub.florida-etat.org/metadata/gc_communitycenter.htm)
- Correctional Facilities in Florida [https://etdmpub.florida-etat.org/metadata/gc\\_correctional.htm](https://etdmpub.florida-etat.org/metadata/gc_correctional.htm)
- Cultural Centers in Florida [https://etdmpub.florida-etat.org/metadata/gc\\_culturecenter.htm](https://etdmpub.florida-etat.org/metadata/gc_culturecenter.htm)
- Fire Department and Rescue Station Facilities in Florida [https://etdmpub.florida-etat.org/metadata/gc\\_firestat.htm](https://etdmpub.florida-etat.org/metadata/gc_firestat.htm)
- Local, State, and Federal Government Buildings in Florida [https://etdmpub.florida-etat.org/metadata/gc\\_govbuild.htm](https://etdmpub.florida-etat.org/metadata/gc_govbuild.htm)
- Florida Health Care Facilities [https://etdmpub.florida-etat.org/metadata/gc\\_health.htm](https://etdmpub.florida-etat.org/metadata/gc_health.htm)
- Hospital Facilities in Florida [https://etdmpub.florida-etat.org/metadata/gc\\_hospitals.htm](https://etdmpub.florida-etat.org/metadata/gc_hospitals.htm)
- Law Enforcement Facilities in Florida [https://etdmpub.florida-etat.org/metadata/gc\\_lawenforce.htm](https://etdmpub.florida-etat.org/metadata/gc_lawenforce.htm)
- Florida Parks and Recreational Facilities [https://etdmpub.florida-etat.org/metadata/gc\\_parks.htm](https://etdmpub.florida-etat.org/metadata/gc_parks.htm)
- Religious Centers [https://etdmpub.florida-etat.org/metadata/gc\\_religion.htm](https://etdmpub.florida-etat.org/metadata/gc_religion.htm)
- Florida Public and Private Schools [https://etdmpub.florida-etat.org/metadata/gc\\_schools.htm](https://etdmpub.florida-etat.org/metadata/gc_schools.htm)
- Social Service Centers [https://etdmpub.florida-etat.org/metadata/gc\\_socialservice.htm](https://etdmpub.florida-etat.org/metadata/gc_socialservice.htm)
- Assisted Rental Housing Units in Florida [https://etdmpub.florida-etat.org/metadata/gc\\_assisted\\_housing.htm](https://etdmpub.florida-etat.org/metadata/gc_assisted_housing.htm)
- Group Care Facilities <https://etdmpub.florida-etat.org/metadata/groupcare.htm>
- Mobile Home Parks in Florida [https://etdmpub.florida-etat.org/metadata/gc\\_mobilehomes.htm](https://etdmpub.florida-etat.org/metadata/gc_mobilehomes.htm)
- Migrant Camps in Florida <https://etdmpub.florida-etat.org/metadata/migrant.htm>
- Veteran Organizations and Facilities [https://etdmpub.florida-etat.org/metadata/gc\\_veterans.htm](https://etdmpub.florida-etat.org/metadata/gc_veterans.htm)
- Generalized Land Use - Florida DOT District 3 [https://etdmpub.florida-etat.org/metadata/d3\\_lu\\_gen.htm](https://etdmpub.florida-etat.org/metadata/d3_lu_gen.htm)
- Census Block Groups in Florida [https://etdmpub.florida-etat.org/metadata/e2\\_cenacs\\_cci.htm](https://etdmpub.florida-etat.org/metadata/e2_cenacs_cci.htm)
- 1990 Census Block Groups in Florida [https://etdmpub.florida-etat.org/metadata/e2\\_cenblkgrp\\_1990\\_cci.htm](https://etdmpub.florida-etat.org/metadata/e2_cenblkgrp_1990_cci.htm)
- 2000 Census Block Groups in Florida [https://etdmpub.florida-etat.org/metadata/e2\\_cenblkgrp\\_2000\\_cci.htm](https://etdmpub.florida-etat.org/metadata/e2_cenblkgrp_2000_cci.htm)
- 2010 Census Block Groups in Florida [https://etdmpub.florida-etat.org/metadata/e2\\_cenblkgrp\\_2010\\_cci.htm](https://etdmpub.florida-etat.org/metadata/e2_cenblkgrp_2010_cci.htm)