

# Sociocultural Data Report

## Steinhatchee

**Area:** 3.305 square miles  
**Jurisdiction(s):** Cities: NA  
 Counties: Dixie, Taylor

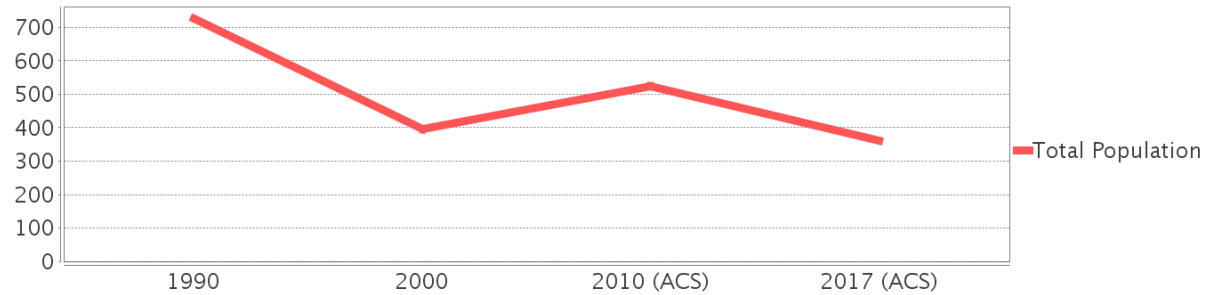
## General Population Trends

Description	1990	2000	2010 (ACS)	2017 (ACS)
Total Population	726	396	524	362
Total Households	320	194	262	220
Average Persons per Acre	0.25	0.20	0.19	0.13
Average Persons per Household	2.33	2.09	2.00	2.12
Average Persons per Family	2.76	2.65	2.50	2.44
Males	362	193	266	164
Females	364	203	257	198

## Race and Ethnicity Trends

Description	1990	2000	2010 (ACS)	2017 (ACS)
White Alone	723 (99.59%)	396 (100.00%)	515 (98.28%)	349 (96.41%)
Black or African American Alone	0 (0.00%)	0 (0.00%)	0 (0.00%)	0 (0.00%)
Native Hawaiian and Other Pacific Islander Alone	0 (0.00%)	0 (0.00%)	0 (0.00%)	0 (0.00%)
Asian Alone	0 (0.00%)	0 (0.00%)	1 (0.19%)	13 (3.59%)
American Indian or Alaska Native Alone	2 (0.28%)	0 (0.00%)	2 (0.38%)	0 (0.00%)
Some Other Race Alone	0 (0.00%)	0 (0.00%)	3 (0.57%)	0 (0.00%)
Claimed 2 or More Races	NA (NA)	0 (0.00%)	3 (0.57%)	0 (0.00%)
Hispanic or Latino of Any Race	7 (0.96%)	2 (0.51%)	10 (1.91%)	0 (0.00%)
Not Hispanic or Latino	719 (99.04%)	394 (99.49%)	514 (98.09%)	362 (100.00%)
Minority	9 (1.24%)	2 (0.51%)	16 (3.05%)	13 (3.59%)

## Population

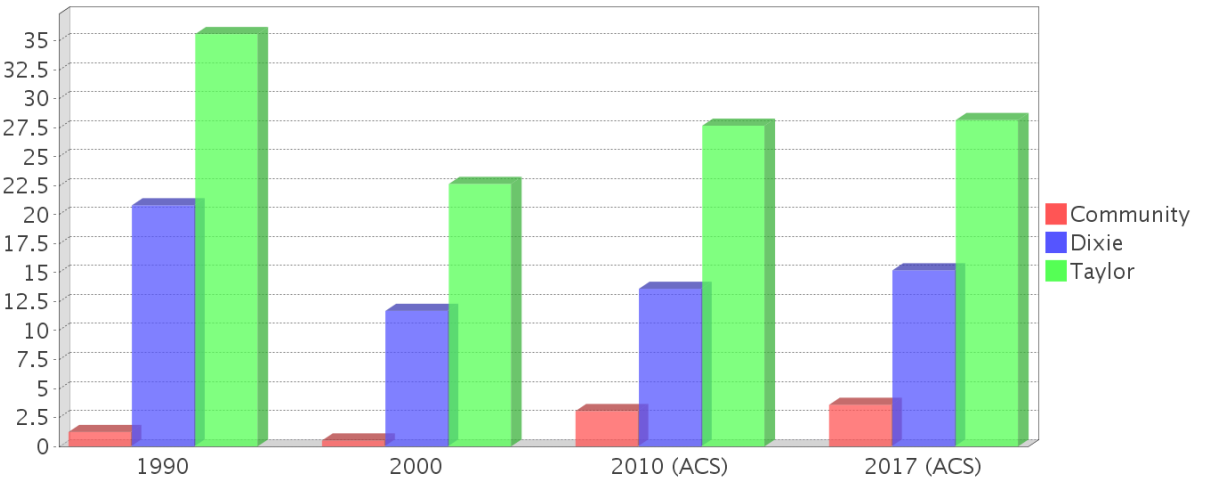


## Race



● White Alone 
 ● Black or African American Alone 
 ● Native Hawaiian and Other Pacific Islander Alone 
 ● Asian Alone 
 ● American Indian or Alaska Native Alone 
 ● Some Other Race Alone 
 ● Claimed 2 or More Races (after 1990) 
 ● Hispanic or Latino of Any Race (1990 only)

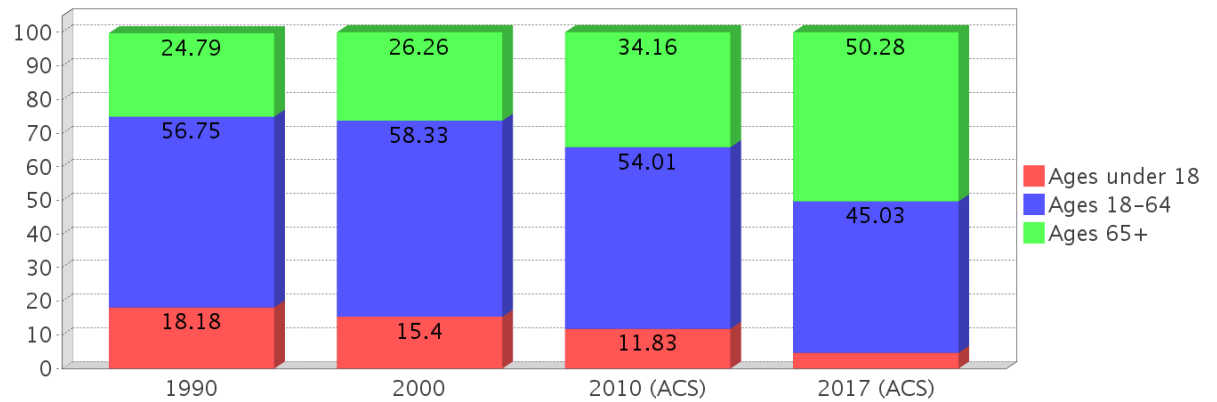
## Minority Percentage Population



### Age Trends

Description	1990	2000	2010 (ACS)	2017 (ACS)
Under Age 5	5.51%	2.78%	3.24%	0.00%
Ages 5-17	12.67%	12.63%	8.59%	4.70%
Ages 18-21	3.58%	4.55%	2.29%	0.00%
Ages 22-29	8.40%	5.05%	5.34%	0.28%
Ages 30-39	9.23%	9.09%	6.30%	0.00%
Ages 40-49	11.29%	12.37%	10.31%	6.63%
Ages 50-64	24.24%	27.27%	29.77%	38.12%
Age 65 and Over	24.79%	26.26%	34.16%	50.28%
-Ages 65-74	16.80%	17.17%	24.05%	17.13%
-Ages 75-84	6.06%	6.06%	8.40%	30.39%
-Age 85 and Over	2.07%	3.03%	1.53%	2.76%
Median Age	NA	54	46	47

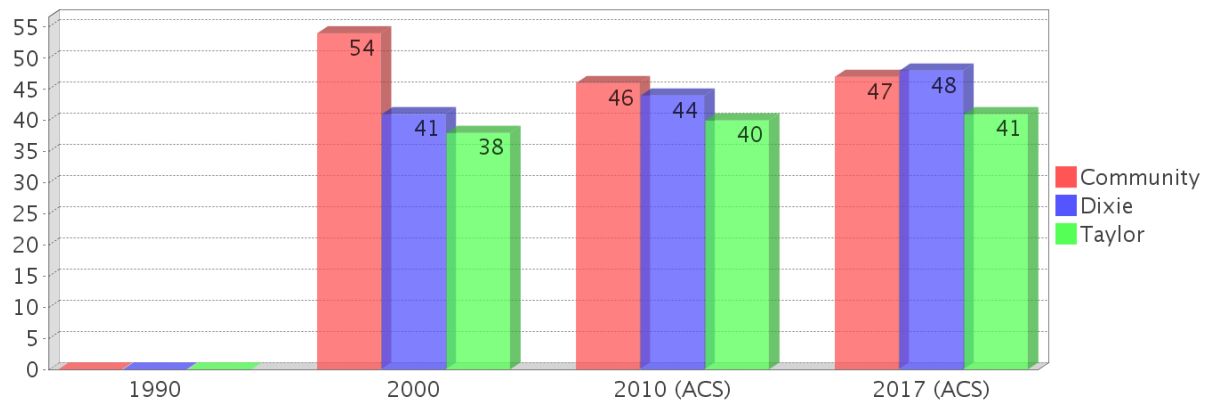
### Percentage Population by Age Group



### Income Trends

Description	1990	2000	2010 (ACS)	2017 (ACS)
Median Household Income	\$12,426	\$23,150	\$28,688	\$40,229
Median Family Income	\$15,324	\$32,929	\$29,250	\$21,774
Population below Poverty Level	30.85%	14.65%	11.64%	18.23%
Households below Poverty Level	26.56%	15.98%	16.03%	15.91%
Households with Public Assistance Income	3.75%	3.09%	0.00%	0.00%

### Median Age Comparison

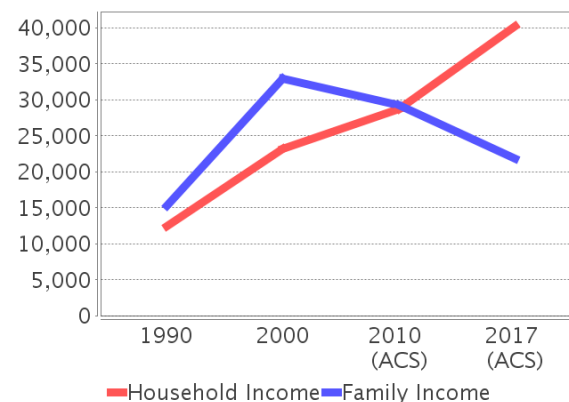


### Disability Trends

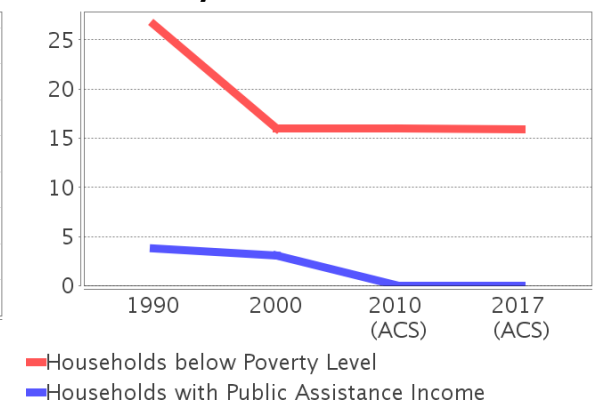
See the Data Sources section below for an explanation about the differences in disability data among the various years.

Description	1990	2000	2010 (ACS)	2017 (ACS)
Population 16 To 64 Years with a disability	86 (15.14%)	63 (16.36%)	(NA)	(NA)
Population 20 To 64 Years with a disability	(NA)	(NA)	(NA)	48 (29.45%)

### Income Trends



### Poverty and Public Assistance



## Educational Attainment Trends

Age 25 and Over

Description	1990	2000	2010 (ACS)	2017 (ACS)
Less than 9th Grade	88 (16.54%)	32 (10.46%)	23 (5.30%)	21 (6.09%)
9th to 12th Grade, No Diploma	158 (29.70%)	53 (17.32%)	14 (3.23%)	44 (12.75%)
High School Graduate or Higher	286 (53.76%)	222 (72.55%)	396 (91.24%)	280 (81.16%)
Bachelor's Degree or Higher	9 (1.69%)	41 (13.40%)	88 (20.28%)	0 (0.00%)

## Language Trends

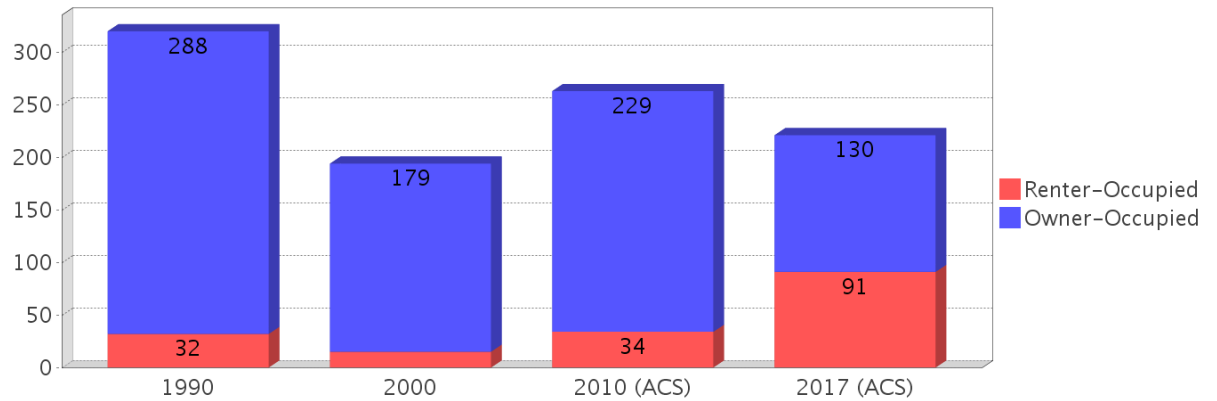
Age 5 and Over

Description	1990	2000	2010 (ACS)	2017 (ACS)
Speaks English Well	0 (0.00%)	4 (1.04%)	0 (0.00%)	29 (8.01%)
Speaks English Not Well	NA (NA)	2 (0.52%)	0 (0.00%)	0 (0.00%)
Speaks English Not at All	NA (NA)	0 (0.00%)	0 (0.00%)	0 (0.00%)
Speaks English Not Well or Not at All	0 (0.00%)	2 (0.52%)	0 (0.00%)	0 (0.00%)

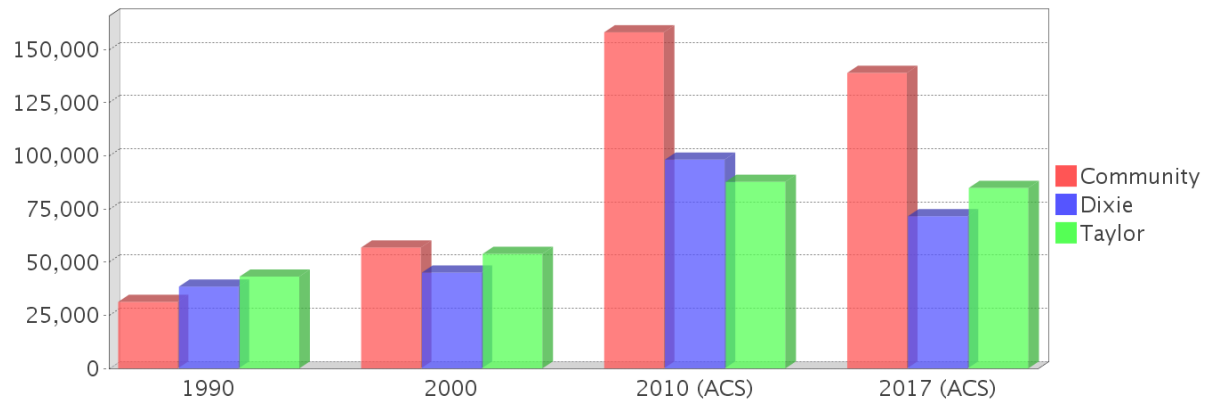
## Housing Trends

Description	1990	2000	2010 (ACS)	2017 (ACS)
Total	690	452	764	866
Units per Acre	0.37	0.23	0.42	0.48
Single-Family Units	145	167	344	288
Multi-Family Units	0	0	21	102
Mobile Home Units	173	233	266	476
Owner-Occupied Units	288	179	229	130
Renter-Occupied Units	32	15	34	91
Vacant Units	371	258	502	646
Median Housing Value	\$31,300	\$56,900	\$158,100	\$139,000
Occupied Housing Units w/No Vehicle	30 (9.40%)	20 (10.31%)	0 (0.00%)	0 (0.00%)

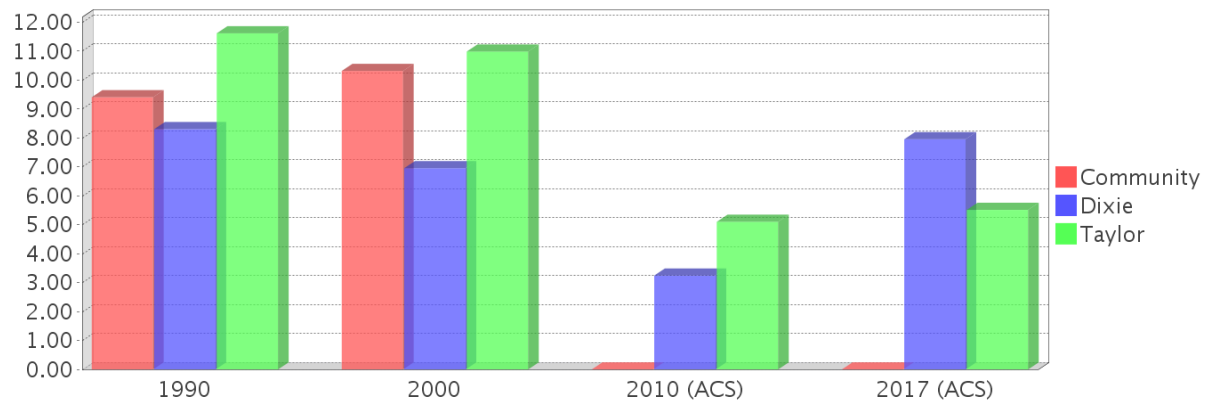
## Housing Tenure



## Median Housing Value Comparison

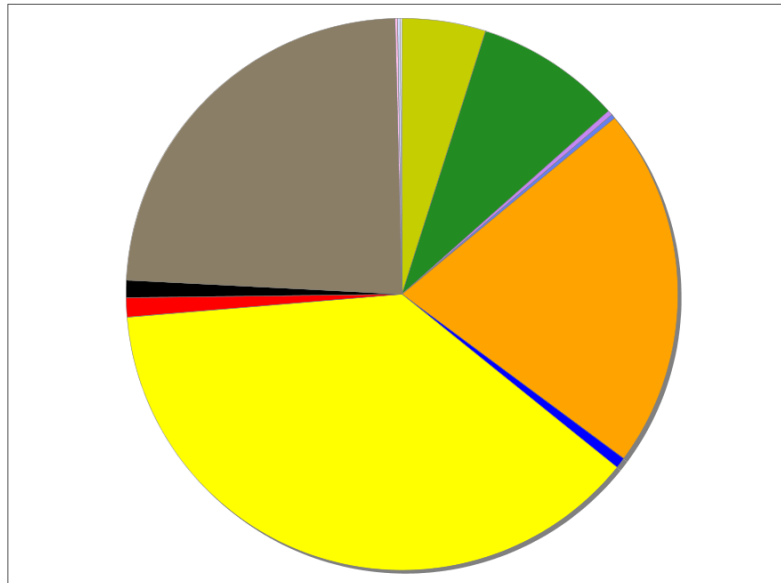


## Occupied Units With No Vehicles Available



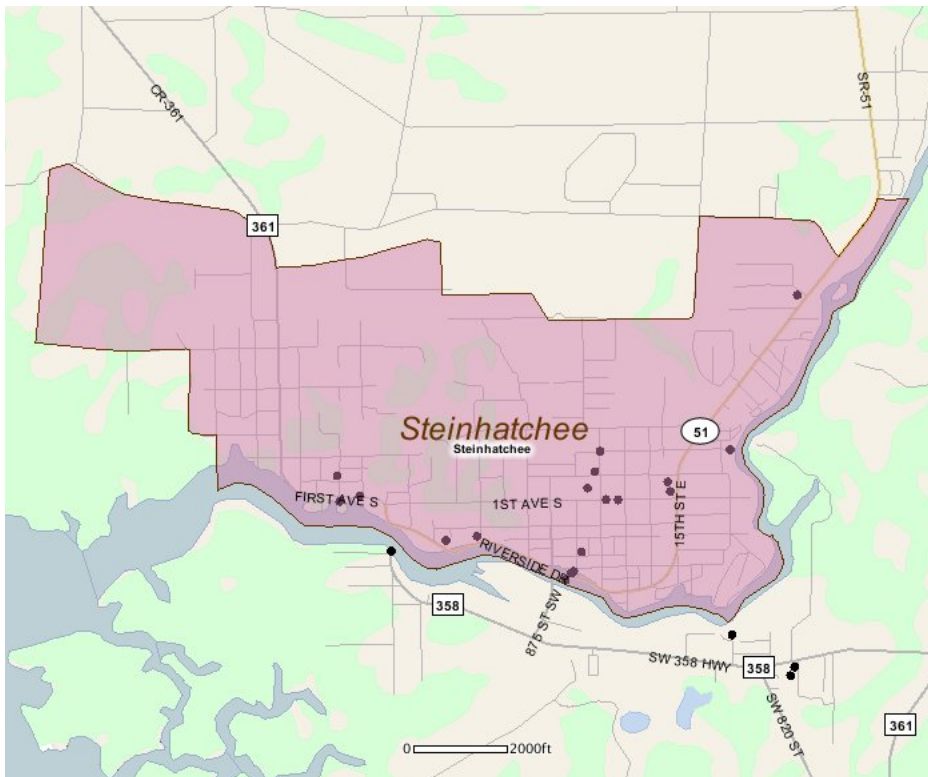
## Existing Land Use

Land Use Type	Acres	Percentage
Acreage Not Zoned For Agriculture	100	4.73%
Agricultural	174	8.23%
Centrally Assessed	0	0.00%
Industrial	6	0.28%
Institutional	5	0.24%
Mining	0	0.00%
Other	431	20.37%
Public/Semi-Public	13	0.61%
Recreation	0	0.00%
Residential	772	36.49%
Retail/Office	23	1.09%
Row	20	0.95%
Vacant Residential	485	22.93%
Vacant Nonresidential	3	0.14%
Water	3	0.14%
Parcels With No Values	2	0.09%



- Acreage Not Zoned For Agriculture
- Agricultural
- Centrally Assessed
- Industrial
- Institutional
- Mining
- Other
- Public/Semi-Public
- Recreation
- Residential
- Retail/Office
- Row
- Vacant Residential
- Vacant Nonresidential
- Water
- Parcels With No Values

## Location Maps



---

## Community Facilities

The community facilities information below is useful in a variety of ways for environmental evaluations. These community resources should be evaluated for potential sociocultural effects, such as accessibility and relocation potential. The facility types may indicate the types of population groups present in the project study area. Facility staff and leaders can be sources of community information such as who uses the facility and how it is used. Additionally, community facilities are potential public meeting venues.

### Community Centers (Points)

Facility Name	Address	Zip Code
BOYS & GIRLS CLUB - STEINHATCHEE STINGRAY	1209 FIRST AVE SE	32359
AMERICAN LEGION POST 291	220 11TH ST SE	32359
STEINHATCHEE COMMUNITY CENTER	1013 S RIVERSIDE DR	32359

### Fire Stations (Points)

Facility Name	Address	Zip Code
STEINHATCHEE VOLUNTEER FIRE DEPARTMENT	1 12TH ST NE	32359

### Florida Parks and Recreational Facilities (Points)

Facility Name	Address	Zip Code
STEINHATCHEE 1ST AVENUE NE PRIMITIVE BOAT LAUNCH (LADD'S LANDING)	1ST AVENUE NE	32359
FORT STEINHATCHEE PIER	1010 RIVERSIDE DR SE	32348
STEINHATCHEE PARK	1013 RIVERSIDE DR SE	32359
IDEAL MARINA PUBLIC BOAT RAMP	6 1ST AVE S	32359

### Government Building

Facility Name	Address	Zip Code
U S POST OFFICE - STEINHATCHEE	104 15TH ST SE	32359

### Healthcare Facilities (Geocoded)

Facility Name	Address	Zip Code
STEINHATCHEE FAMILY MEDICAL CENTER	1209 FIRST AVENUE S	32359

### Public and Private Schools (Points)

Facility Name	Address	Zip Code
STEINHATCHEE SCHOOL	1209 SE 1ST AVE	32359

### Religious Centers (Points)

Facility Name	Address	Zip Code
CHURCH OF CHRIST	507 SE RIVERSIDE DRIVE	32359
BAPTIST PURITY CHURCH	9 CENTRAL AVE NE	32348
FELLOWSHIP BAPTIST CHURCH	112 15TH STREET SE	32359
FIRST BAPTIST CHURCH OF STEINHATCHEE	HIGHWAY 51	32359
STEINHATCHEE REVIVAL CENTER	115 FIRST AVE SE	32348
FRIENDSHIP CHAPEL CHURCH OF GOD	1654 WILD WOOD DR NE	32359

### US Census Places

Facility Name
Steinhatchee

### Veteran Organizations and Facilities (Points)

Facility Name	Address	Zip Code
AMERICAN LEGION POST 291	220 11TH ST SE	32359

---

## Block Groups

The following Census Block Groups were used to calculate demographics for this report.

### 1990 Census Block Groups

121239504005, 121239504008, 121239504004, 120299802003

### 2000 Census Block Groups

121239504004

### 2010 Census Block Groups

121239504001, 121239504004

### 2017 Census Block Groups

121239504001, 121239504004

---

## Data Sources

### Area

The geographic area of the community based on a user-specified community boundary or area of interest (AOI) boundary.

### Jurisdiction

Jurisdiction(s) includes local government boundaries that intersect the community or AOI boundary.

### Demographic Data

Demographic data reported under the headings General Population Trends, Race and Ethnicity Trends, Age Trends, Income Trends, Educational Attainment Trends, Language Trends, and Housing Trends is from the U.S. Decennial Census (1990, 2000) and the American Community Survey (ACS) 5-year estimates from 2006-2010 and 2013-2017. The data was gathered at the block group level for user-specified community boundaries and AOIs, and at the county level for counties. Depending on the dataset, the data represents 100% counts (Census Summary File 1) or sample-based information (Census Summary File 3 or ACS).

### About the Census Data:

User-specified community boundaries and AOIs do not always correspond precisely to block group boundaries. In these instances, adjustment of the geographic area and data for affected block groups is required to estimate the actual population. To improve the accuracy of such estimates in the SDR report, the census block group data was adjusted to exclude all census blocks with a population of two or fewer. These areas were eliminated from the corresponding years' block groups. Next, the portion of the block group that lies outside of the community or AOI boundary was removed. The demographics within each block group were then recalculated, assuming an equal area distribution of the population. Note that there may be areas where there is no population.

Use caution when comparing the 100% count data (Decennial Census) to the sample-based data (ACS). In any given year, about one in 40 or 2.5% of U.S. households will receive the ACS questionnaire. Over any five-year period, about one in eight households will receive the questionnaire, as compared to about one in six that received the long form questionnaire for the Decennial Census 2000. (Source: <http://mcdc.missouri.edu/pub/data/acs/Readme.shtml>) The U.S. Census Bureau provides help with this process: <https://www.census.gov/programs-surveys/acs/guidance/comparing-acs-data/2017.html>

Use caution when interpreting changes in Race and Ethnicity over time. Starting with the 2000 Decennial Census, respondents were given a new option of selecting one or more race categories. Also in 2000, the placement of the question about Hispanic origin changed, helping to increase responsiveness to the Hispanic-origin question. Because of these and other changes, the 1990 data on race and ethnicity are not directly comparable with data from later censuses. (Source: <http://www.census.gov/prod/2001pubs/c2kbr01-1.pdf>; <http://www.census.gov/pred/www/rpts/Race%20and%20Ethnicity%20FINAL%20report.pdf>)

The "Minority" calculations are derived from Census and ACS data using both the race and ethnicity responses. On this report, "Minority" refers to individuals who list a race other than White and/or list their ethnicity as Hispanic/Latino. In other words, people who are multi-racial, any single race other than White, or Hispanic/Latino of any race are considered minorities.

Disability data is not included in the 2010 Decennial Census, or the 2006-2010 ACS. This data is available in the 2013-2017 ACS.

Because of changes made to the Census and ACS questions between 1990 and 2017, disability variables should not be compared from year to year. For example: 1) With the 1990 data the disabilities are listed as a "work disability" while this distinction is not made with 2000 or 2017 ACS data; 2) The 2017 ACS data includes the institutionalized population (e.g. persons in prisons and group homes), while this population is not included in 1990 or 2000; 3) the age groupings changed over the years.

Please take the following two concerns into account when viewing this data: 1) With the 1990 data the disabilities are listed as a "work disability" while this distinction is not made with 2000 or 2017 ACS data; 2) The 2017 ACS data includes the institutionalized population (e.g. persons in prisons and group homes), while this population is not included in 1990 or 2000.

The category Bachelor's Degree or Higher under the heading Educational Attainment Trends is a subset of the category High School Graduate or Higher.

Income of households. This includes the income of the householder and all other individuals 15 years old and over in the household, whether they are related to the householder or not. Because many households consist of only one person, average household income is usually less than average family income.

Income of families. In compiling statistics on family income, the incomes of all members 15 years old and over related to the householder are summed and treated as a single amount.

Age Trends median age for 1990 is not available.

### **Land Use Data**

The Land Use information Indicates acreages and percentages for the generalized land use types used to group parcel-specific, existing land use assigned by the county property appraiser office according to the Florida Department of Revenue land use codes.

### **Community Facilities Data**

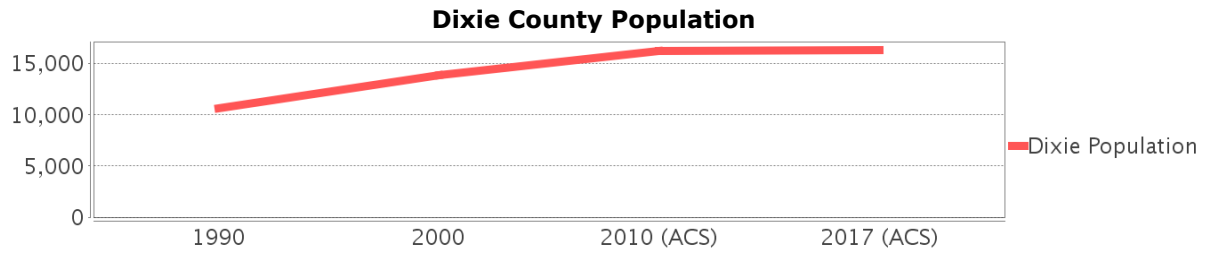
- Assisted Rental Housing Units - Identifies multifamily rental developments that receive funding assistance under federal, state, and local government programs to offer affordable housing as reported by the Shimberg Center for Housing Studies, University of Florida.
- Mobile Home Parks - Identifies approved or acknowledged mobile home parks reported by the Florida Department of Business and Professional Regulation and Florida Department of Health.
- Migrant Camps - Identifies migrant labor camp facilities inspected by the Florida Department of Health.
- Group Care Facilities - Identifies group care facilities inspected by the Florida Department of Health.

- Community Center and Fraternal Association Facilities - Identifies facilities reported by multiple sources.
- Law Enforcement Correctional Facilities - Identifies facilities reported by multiple sources.
- Cultural Centers - Identifies cultural centers including organizations, buildings, or complexes that promote culture and arts (e.g., aquariums and zoological facilities; arboreta and botanical gardens; dinner theaters; drive-ins; historical places and services; libraries; motion picture theaters; museums and art galleries; performing arts centers; performing arts theaters; planetariums; studios and art galleries; and theater producers stage facilities) reported by multiple sources.
- Fire Department and Rescue Station Facilities - Identifies facilities reported by multiple sources.
- Government Buildings - Identifies local, state, and federal government buildings reported by multiple sources.
- Health Care Facilities - Identifies health care facilities including abortion clinics, dialysis clinics, medical doctors, nursing homes, osteopaths, state laboratories/clinics, and surgicenters/walk-in clinics reported by the Florida Department of Health.
- Hospital Facilities - Identifies hospital facilities reported by multiple sources.
- Law Enforcement Facilities - Identifies law enforcement facilities reported by multiple sources.
- Parks and Recreational Facilities - Identifies parks and recreational facilities reported by multiple sources.
- Religious Center Facilities - Identifies religious centers including churches, temples, synagogues, mosques, chapels, centers, and other types of religious facilities reported by multiple sources.
- Private and Public Schools - Identifies private and public schools reported by multiple sources.
- Social Service Centers - Identifies social service centers reported by multiple sources.
- Veteran Organizations and Facilities

# Dixie County Demographic Profile

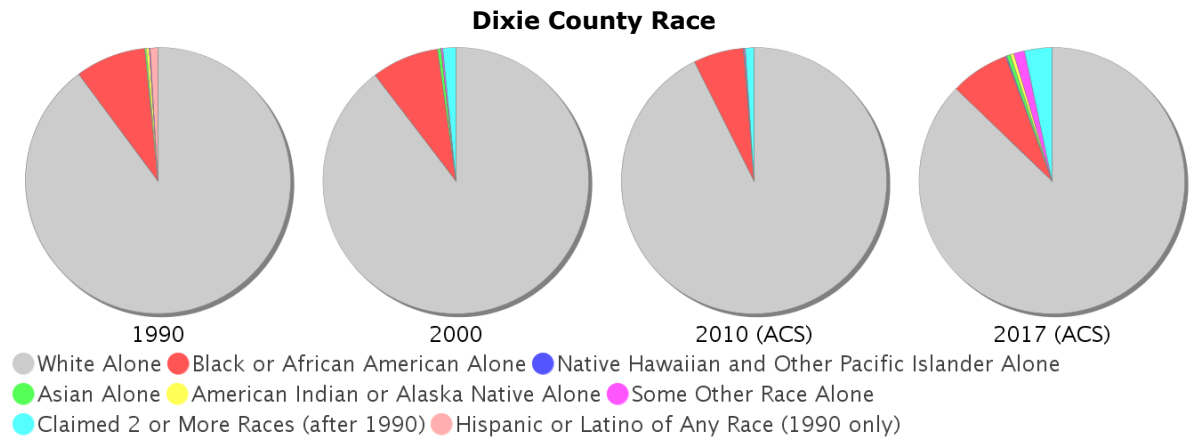
## General Population Trends - Dixie

Description	1990	2000	2010 (ACS)	2017 (ACS)
Total Population	10,585	13,827	16,196	16,323
Total Households	3,916	5,205	4,909	6,431
Average Persons per Acre	0.023	0.03	0.035	0.036
Average Persons per Household	2.703	2.435	3.00	2.30
Average Persons per Family	3.051	2.941	4.211	2.855
Males	5,484	7,369	8,883	9,048
Females	5,101	6,458	7,313	7,275



## Race and Ethnicity Trends - Dixie

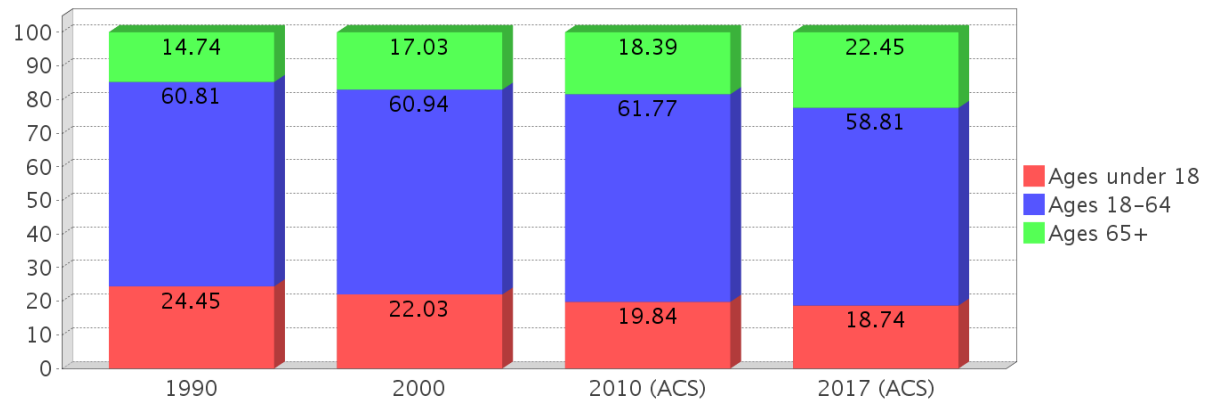
Description	1990	2000	2010 (ACS)	2017 (ACS)
White Alone	9,594 (90.64%)	12,386 (89.58%)	14,997 (92.60%)	14,224 (87.14%)
Black or African American Alone	920 (8.69%)	1,136 (8.22%)	989 (6.11%)	1,167 (7.15%)
Native Hawaiian and Other Pacific Islander Alone	(NA)	0 (0.00%)	0 (0.00%)	23 (0.14%)
Asian Alone	16 (0.15%)	52 (0.38%)	11 (0.07%)	79 (0.48%)
American Indian or Alaska Native Alone	36 (0.34%)	10 (0.07%)	6 (0.04%)	67 (0.41%)
Some Other Race Alone	19 (0.18%)	25 (0.18%)	26 (0.16%)	218 (1.34%)
Claimed 2 or More Races	(NA)	218 (1.58%)	167 (1.03%)	545 (3.34%)
Hispanic or Latino of Any Race	96 (0.91%)	247 (1.79%)	322 (1.99%)	632 (3.87%)
Not Hispanic or Latino	10,489 (99.09%)	13,580 (98.21%)	15,874 (98.01%)	15,691 (96.13%)
Minority	2,202 (20.80%)	1,616 (11.69%)	2,202 (13.60%)	2,480 (15.19%)



### Age Trends - Dixie

Description	1990	2000	2010 (ACS)	2017 (ACS)
Under Age 5	6.68%	5.40%	5.53%	4.74%
Ages 5-17	17.77%	16.63%	14.31%	14.00%
Ages 18-21	5.05%	4.59%	5.80%	3.22%
Ages 22-29	10.47%	9.22%	7.45%	8.17%
Ages 30-39	14.64%	13.99%	12.29%	11.70%
Ages 40-49	12.36%	13.48%	12.92%	11.70%
Ages 50-64	18.29%	19.66%	23.31%	24.02%
Age 65 and Over	14.74%	17.03%	18.39%	22.45%
-Ages 65-74	9.85%	10.47%	11.00%	13.36%
-Ages 75-84	3.98%	5.47%	5.21%	7.65%
-Age 85 and Over	0.91%	1.09%	2.17%	1.44%
Median Age	NA	41	44	48

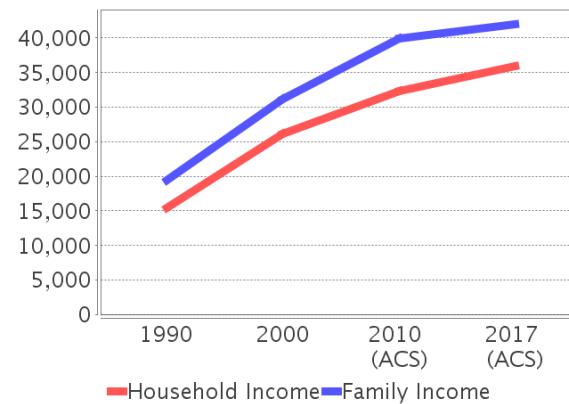
Percentage Population by Age Group - Dixie



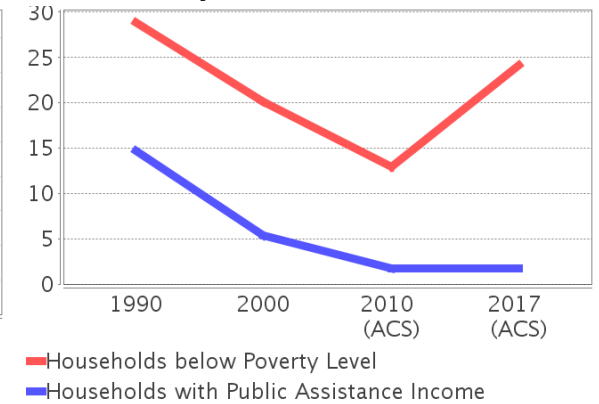
### Income Trends - Dixie

Description	1990	2000	2010 (ACS)	2017 (ACS)
Median Household Income	\$15,380	\$26,082	\$32,312	\$35,910
Median Family Income	\$19,492	\$31,157	\$39,914	\$42,023
Population below Poverty Level	27.45%	19.11%	15.53%	23.66%
Households below Poverty Level	28.83%	20.12%	12.96%	24.15%
Households with Public Assistance Income	14.66%	5.34%	1.77%	1.76%

Income Trends



Poverty and Public Assistance



### Disability Trends - Dixie

See the Data Sources section below for an explanation about the differences in disability data among the various years.

Description	1990	2000	2010 (ACS)	2017 (ACS)
Population 16 To 64 Years with a disability	1,253 (16.14%)	2,563 (21.37%)	NA (NA)	NA (NA)
Population 20 To 64 Years with a disability	NA (NA)	NA (NA)	NA (NA)	1,947 (25.12%)

## Educational Attainment Trends - Dixie

Age 25 and Over

Description	1990	2000	2010 (ACS)	2017 (ACS)
Less than 9th Grade	1,204 (16.78%)	1,085 (11.25%)	1,034 (9.11%)	994 (8.08%)
9th to 12th Grade, No Diploma	1,828 (25.48%)	2,203 (22.85%)	2,071 (18.25%)	1,573 (12.78%)
High School Graduate or Higher	4,143 (57.74%)	6,355 (65.90%)	8,245 (72.64%)	9,742 (79.15%)
Bachelor's Degree or Higher	442 (6.16%)	651 (6.75%)	708 (6.24%)	1,126 (9.15%)

## Language Trends - Dixie

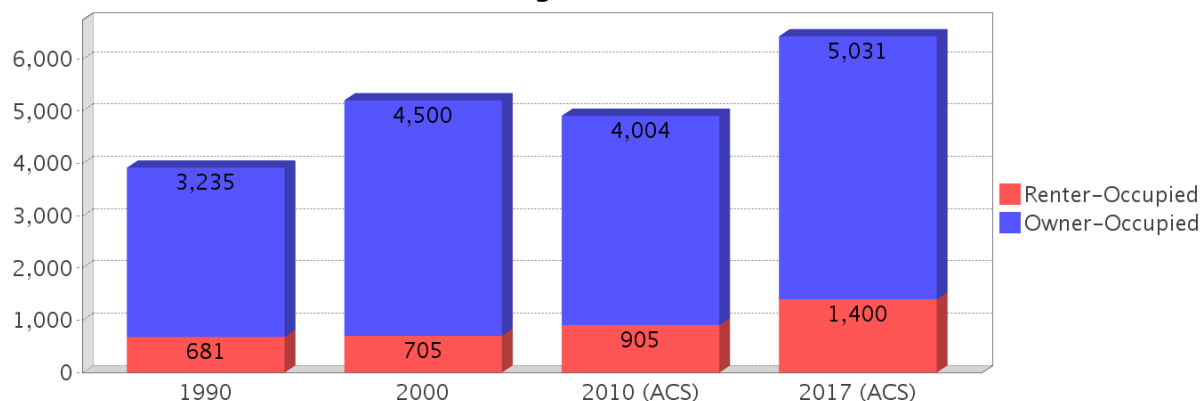
Age 5 and Over

Description	1990	2000	2010 (ACS)	2017 (ACS)
Speaks English Well	20 (0.20%)	132 (1.01%)	24 (0.16%)	141 (0.91%)
Speaks English Not Well	NA (NA)	58 (0.44%)	236 (1.54%)	55 (0.35%)
Speaks English Not at All	NA (NA)	14 (0.11%)	0 (0.00%)	1 (0.01%)
Speaks English Not Well or Not at All	39 (0.39%)	72 (0.55%)	236 (1.54%)	56 (0.36%)

## Housing Trends - Dixie

Description	1990	2000	2010 (ACS)	2017 (ACS)
Total	6,445	7,362	9,033	9,369
Units per Acre	0.014	0.016	0.02	0.02
Single-Family Units	1,931	3,053	4,147	4,112
Multi-Family Units	81	111	121	292
Mobile Home Units	1,866	3,981	4,631	4,889
Owner-Occupied Units	3,235	4,500	4,004	5,031
Renter-Occupied Units	681	705	905	1,400
Vacant Units	2,529	2,157	4,124	2,938
Median Housing Value	\$38,500	\$45,100	\$98,200	\$71,600
Occupied Housing Units w/No Vehicle	325 (8.30%)	362 (6.95%)	159 (3.24%)	511 (7.95%)

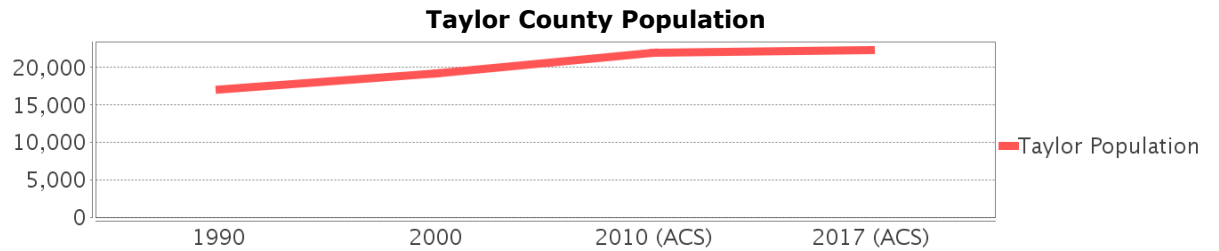
## Housing Tenure - Dixie



# Taylor County Demographic Profile

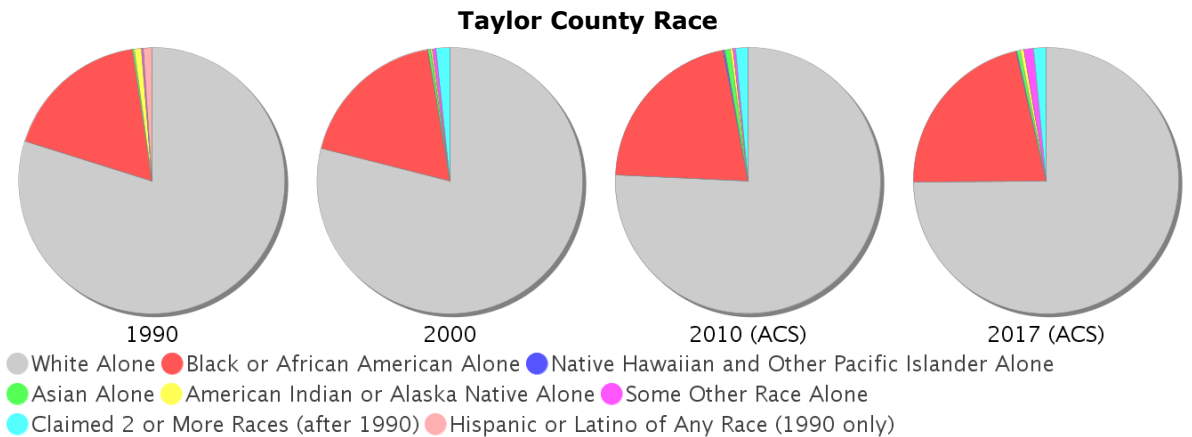
## General Population Trends - Taylor

Description	1990	2000	2010 (ACS)	2017 (ACS)
Total Population	17,111	19,256	22,000	22,350
Total Households	6,401	7,176	7,724	7,406
Average Persons per Acre	0.025	0.029	0.033	0.033
Average Persons per Household	2.673	2.517	3.00	2.48
Average Persons per Family	3.152	3.032	3.268	3.036
Males	8,301	9,790	11,668	12,547
Females	8,810	9,466	10,332	9,803



## Race and Ethnicity Trends - Taylor

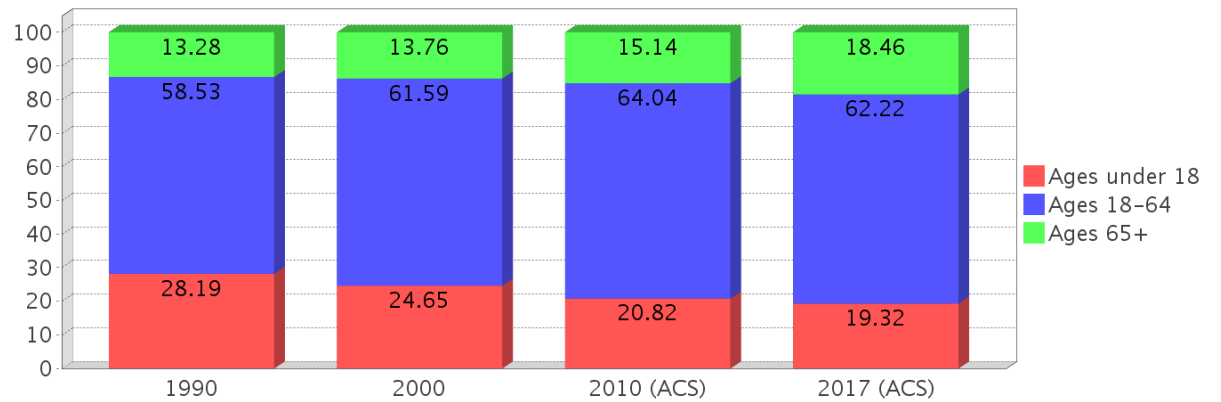
Description	1990	2000	2010 (ACS)	2017 (ACS)
White Alone	13,791 (80.60%)	15,197 (78.92%)	16,660 (75.73%)	16,735 (74.88%)
Black or African American Alone	3,083 (18.02%)	3,540 (18.38%)	4,670 (21.23%)	4,796 (21.46%)
Native Hawaiian and Other Pacific Islander Alone	(NA)	11 (0.06%)	48 (0.22%)	34 (0.15%)
Asian Alone	33 (0.19%)	65 (0.34%)	144 (0.65%)	82 (0.37%)
American Indian or Alaska Native Alone	159 (0.93%)	38 (0.20%)	79 (0.36%)	101 (0.45%)
Some Other Race Alone	39 (0.23%)	84 (0.44%)	65 (0.30%)	259 (1.16%)
Claimed 2 or More Races	(NA)	321 (1.67%)	334 (1.52%)	343 (1.53%)
Hispanic or Latino of Any Race	174 (1.02%)	441 (2.29%)	511 (2.32%)	915 (4.09%)
Not Hispanic or Latino	16,937 (98.98%)	18,815 (97.71%)	21,489 (97.68%)	21,435 (95.91%)
Minority	6,087 (35.57%)	4,359 (22.64%)	6,087 (27.67%)	6,294 (28.16%)



### Age Trends - Taylor

Description	1990	2000	2010 (ACS)	2017 (ACS)
Under Age 5	7.79%	5.95%	6.08%	5.09%
Ages 5-17	20.40%	18.71%	14.74%	14.23%
Ages 18-21	5.04%	4.83%	6.62%	3.07%
Ages 22-29	11.43%	9.50%	9.26%	13.25%
Ages 30-39	14.63%	14.66%	13.30%	12.36%
Ages 40-49	11.99%	14.82%	14.16%	13.34%
Ages 50-64	15.44%	17.79%	20.70%	20.20%
Age 65 and Over	13.28%	13.76%	15.14%	18.46%
-Ages 65-74	8.05%	8.23%	8.98%	10.92%
-Ages 75-84	4.24%	3.67%	5.35%	5.93%
-Age 85 and Over	0.99%	1.85%	0.81%	1.61%
Median Age	NA	38	40	41

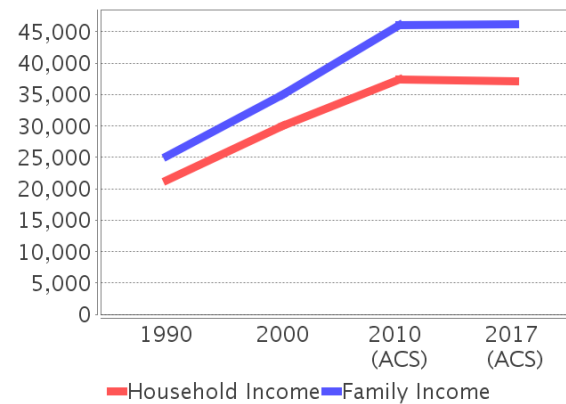
Percentage Population by Age Group - Taylor



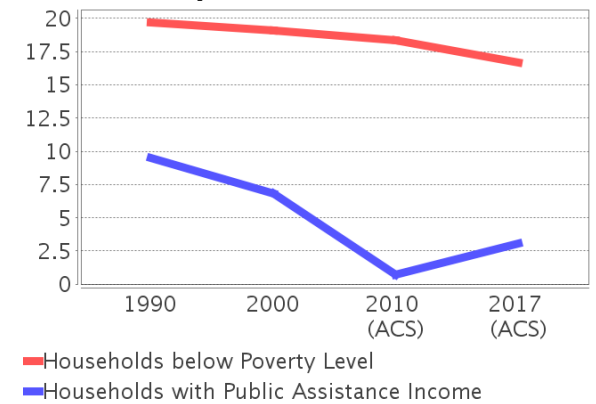
### Income Trends - Taylor

Description	1990	2000	2010 (ACS)	2017 (ACS)
Median Household Income	\$21,380	\$30,032	\$37,408	\$37,188
Median Family Income	\$25,171	\$35,061	\$46,012	\$46,224
Population below Poverty Level	20.76%	18.02%	19.06%	16.42%
Households below Poverty Level	19.67%	19.11%	18.31%	16.65%
Households with Public Assistance Income	9.51%	6.81%	0.69%	3.04%

Income Trends



Poverty and Public Assistance



### Disability Trends - Taylor

See the Data Sources section below for an explanation about the differences in disability data among the various years.

Description	1990	2000	2010 (ACS)	2017 (ACS)
Population 16 To 64 Years with a disability	1,074 (8.39%)	3,050 (18.06%)	NA (NA)	NA (NA)
Population 20 To 64 Years with a disability	NA (NA)	NA (NA)	NA (NA)	2,335 (23.68%)

## Educational Attainment Trends - Taylor

Age 25 and Over

Description	1990	2000	2010 (ACS)	2017 (ACS)
Less than 9th Grade	1,644 (15.13%)	1,156 (8.95%)	899 (5.90%)	909 (5.63%)
9th to 12th Grade, No Diploma	2,479 (22.82%)	2,717 (21.04%)	2,349 (15.41%)	2,400 (14.86%)
High School Graduate or Higher	6,742 (62.05%)	9,041 (70.01%)	11,994 (78.69%)	12,846 (79.52%)
Bachelor's Degree or Higher	1,070 (9.85%)	1,147 (8.88%)	1,830 (12.01%)	1,390 (8.60%)

## Language Trends - Taylor

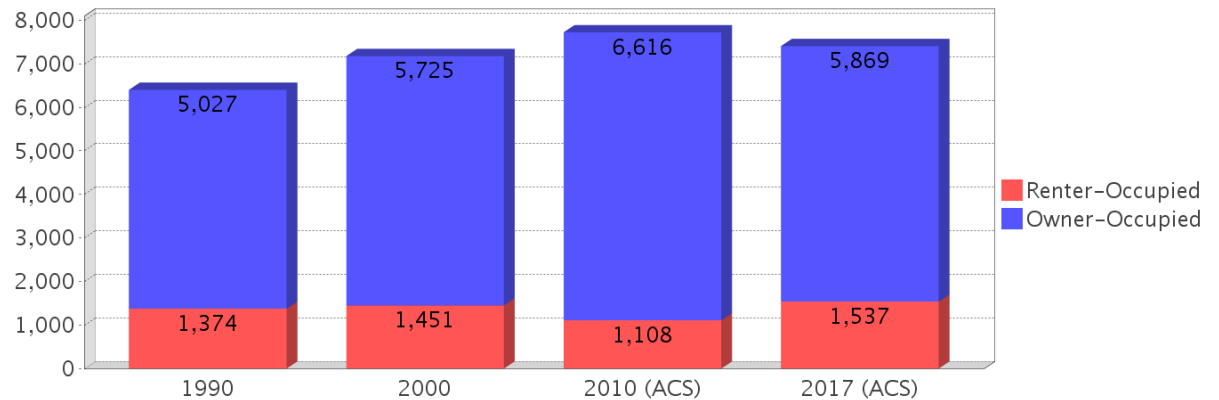
Age 5 and Over

Description	1990	2000	2010 (ACS)	2017 (ACS)
Speaks English Well	67 (0.42%)	105 (0.58%)	95 (0.46%)	423 (1.99%)
Speaks English Not Well	NA (NA)	84 (0.46%)	36 (0.17%)	91 (0.43%)
Speaks English Not at All	NA (NA)	0 (0.00%)	23 (0.11%)	39 (0.18%)
Speaks English Not Well or Not at All	39 (0.25%)	84 (0.46%)	59 (0.29%)	130 (0.61%)

## Housing Trends - Taylor

Description	1990	2000	2010 (ACS)	2017 (ACS)
Total	7,908	9,646	10,850	11,047
Units per Acre	0.012	0.014	0.016	0.016
Single-Family Units	4,139	5,342	6,422	6,702
Multi-Family Units	270	438	306	666
Mobile Home Units	1,933	3,517	4,063	3,616
Owner-Occupied Units	5,027	5,725	6,616	5,869
Renter-Occupied Units	1,374	1,451	1,108	1,537
Vacant Units	1,507	2,470	3,126	3,641
Median Housing Value	\$43,200	\$53,900	\$87,800	\$84,900
Occupied Housing Units w/No Vehicle	743 (11.61%)	788 (10.98%)	394 (5.10%)	408 (5.51%)

## Housing Tenure - Taylor



---

## County Data Sources

Demographic data reported is from the U.S. Decennial Census (1990, 2000) and the American Community Survey (ACS) 5-year estimates from 2006-2010 and 2013-2017. The data was gathered at the county level. Depending on the dataset, the data represents 100% counts (Census Summary File 1) or sample-based information (Census Summary File 3 or ACS).

### About the Census Data:

Use caution when comparing the 100% count data (Decennial Census) to the sample-based data (ACS). In any given year, about one in 40 or 2.5% of U.S. households will receive the ACS questionnaire. Over any five-year period, about one in eight households will receive the questionnaire, as compared to about one in six that received the long form questionnaire for the Decennial Census 2000. (Source: <http://mcdc.missouri.edu/pub/data/acs/Readme.shtml>) The U.S. Census Bureau provides help with this process:

<https://www.census.gov/programs-surveys/acs/guidance/comparing-acs-data/2017.html>

Use caution when interpreting changes in Race and Ethnicity over time. Starting with the 2000 Decennial Census, respondents were given a new option of selecting one or more race categories. Also in 2000, the placement of the question about Hispanic origin changed, helping to increase responsiveness to the Hispanic-origin question. Because of these and other changes, the 1990 data on race and ethnicity are not directly comparable with data from later censuses. (Source: <http://www.census.gov/prod/2001pubs/c2kbr01-1.pdf>; <http://www.census.gov/pred/www/rpts/Race%20and%20Ethnicity%20FINAL%20report.pdf>)

The "Minority" calculations are derived from Census and ACS data using both the race and ethnicity responses. On this report, "Minority" refers to individuals who list a race other than White and/or list their ethnicity as Hispanic/Latino. In other words, people who are multi-racial, any single race other than White, or Hispanic/Latino of any race are considered minorities.

Disability data is not included in the 2010 Decennial Census, or the 2006-2010 ACS. This data is available in the 2013-2017 ACS.

Because of changes made to the Census and ACS questions between 1990 and 2017, disability variables should not be compared from year to year. For example: 1) With the 1990 data the disabilities are listed as a "work disability" while this distinction is not made with 2000 or 2017 ACS data; 2) The 2017 ACS data includes the institutionalized population (e.g. persons in prisons and group homes), while this population is not included in 1990 or 2000; 3) the age groupings changed over the years.

Please take the following two concerns into account when viewing this data: 1) With the 1990 data the disabilities are listed as a "work disability" while this distinction is not made with 2000 or 2017 ACS data; 2) The 2017 ACS data includes the institutionalized population (e.g. persons in prisons and group homes), while this population is not included in 1990 or 2000.

source:

<https://www.census.gov/people/disability/methodology/acs.html>

<https://www.census.gov/population/www/cen2000/90vs00/index.html>

The category Bachelor's Degree or Higher under the heading Educational Attainment Trends is a subset of the category High School Graduate or Higher.

---

## Metadata

- Community and Fraternal Centers [https://etdmpub.florida-et.org/metadata/gc\\_communitycenter.htm](https://etdmpub.florida-et.org/metadata/gc_communitycenter.htm)
- Correctional Facilities in Florida [https://etdmpub.florida-et.org/metadata/gc\\_correctional.htm](https://etdmpub.florida-et.org/metadata/gc_correctional.htm)
- Cultural Centers in Florida [https://etdmpub.florida-et.org/metadata/gc\\_culturecenter.htm](https://etdmpub.florida-et.org/metadata/gc_culturecenter.htm)
- Fire Department and Rescue Station Facilities in Florida [https://etdmpub.florida-et.org/metadata/gc\\_firestat.htm](https://etdmpub.florida-et.org/metadata/gc_firestat.htm)
- Local, State, and Federal Government Buildings in Florida [https://etdmpub.florida-et.org/metadata/gc\\_govbuild.htm](https://etdmpub.florida-et.org/metadata/gc_govbuild.htm)
- Florida Health Care Facilities [https://etdmpub.florida-et.org/metadata/gc\\_health.htm](https://etdmpub.florida-et.org/metadata/gc_health.htm)
- Hospital Facilities in Florida [https://etdmpub.florida-et.org/metadata/gc\\_hospitals.htm](https://etdmpub.florida-et.org/metadata/gc_hospitals.htm)
- Law Enforcement Facilities in Florida [https://etdmpub.florida-et.org/metadata/gc\\_lawenforce.htm](https://etdmpub.florida-et.org/metadata/gc_lawenforce.htm)
- Florida Parks and Recreational Facilities [https://etdmpub.florida-et.org/metadata/gc\\_parks.htm](https://etdmpub.florida-et.org/metadata/gc_parks.htm)
- Religious Centers [https://etdmpub.florida-et.org/metadata/gc\\_religion.htm](https://etdmpub.florida-et.org/metadata/gc_religion.htm)
- Florida Public and Private Schools [https://etdmpub.florida-et.org/metadata/gc\\_schools.htm](https://etdmpub.florida-et.org/metadata/gc_schools.htm)
- Social Service Centers [https://etdmpub.florida-et.org/metadata/gc\\_socialservice.htm](https://etdmpub.florida-et.org/metadata/gc_socialservice.htm)
- Assisted Rental Housing Units in Florida [https://etdmpub.florida-et.org/metadata/gc\\_assisted\\_housing.htm](https://etdmpub.florida-et.org/metadata/gc_assisted_housing.htm)
- Group Care Facilities <https://etdmpub.florida-et.org/metadata/groupcare.htm>
- Mobile Home Parks in Florida [https://etdmpub.florida-et.org/metadata/gc\\_mobilehomes.htm](https://etdmpub.florida-et.org/metadata/gc_mobilehomes.htm)
- Migrant Camps in Florida <https://etdmpub.florida-et.org/metadata/migrant.htm>
- Veteran Organizations and Facilities [https://etdmpub.florida-et.org/metadata/gc\\_veterans.htm](https://etdmpub.florida-et.org/metadata/gc_veterans.htm)
- Generalized Land Use - Florida DOT District 2 [https://etdmpub.florida-et.org/metadata/d2\\_lu\\_gen.htm](https://etdmpub.florida-et.org/metadata/d2_lu_gen.htm)
- Census Block Groups in Florida [https://etdmpub.florida-et.org/metadata/e2\\_cenacs\\_cci.htm](https://etdmpub.florida-et.org/metadata/e2_cenacs_cci.htm)
- 1990 Census Block Groups in Florida [https://etdmpub.florida-et.org/metadata/e2\\_cenblkgrp\\_1990\\_cci.htm](https://etdmpub.florida-et.org/metadata/e2_cenblkgrp_1990_cci.htm)
- 2000 Census Block Groups in Florida [https://etdmpub.florida-et.org/metadata/e2\\_cenblkgrp\\_2000\\_cci.htm](https://etdmpub.florida-et.org/metadata/e2_cenblkgrp_2000_cci.htm)
- 2010 Census Block Groups in Florida [https://etdmpub.florida-et.org/metadata/e2\\_cenblkgrp\\_2010\\_cci.htm](https://etdmpub.florida-et.org/metadata/e2_cenblkgrp_2010_cci.htm)