

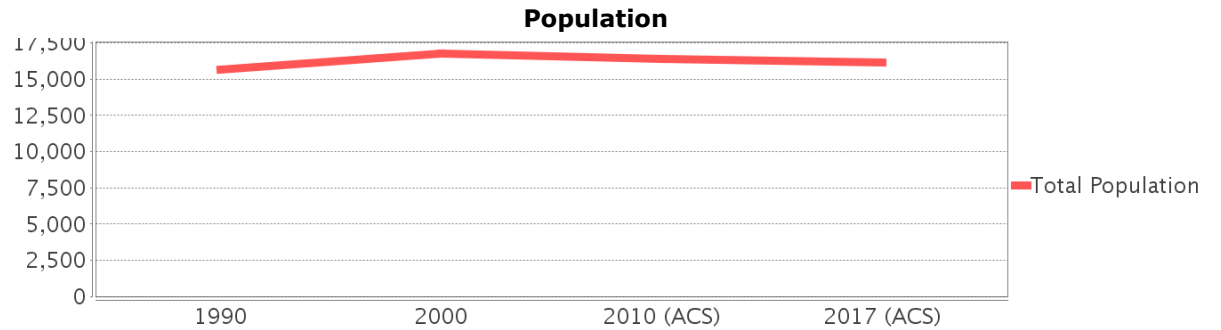
Sociocultural Data Report

Sunset

Area: 3.547 square miles
Jurisdiction(s): Cities: NA
 Counties: Miami-dade

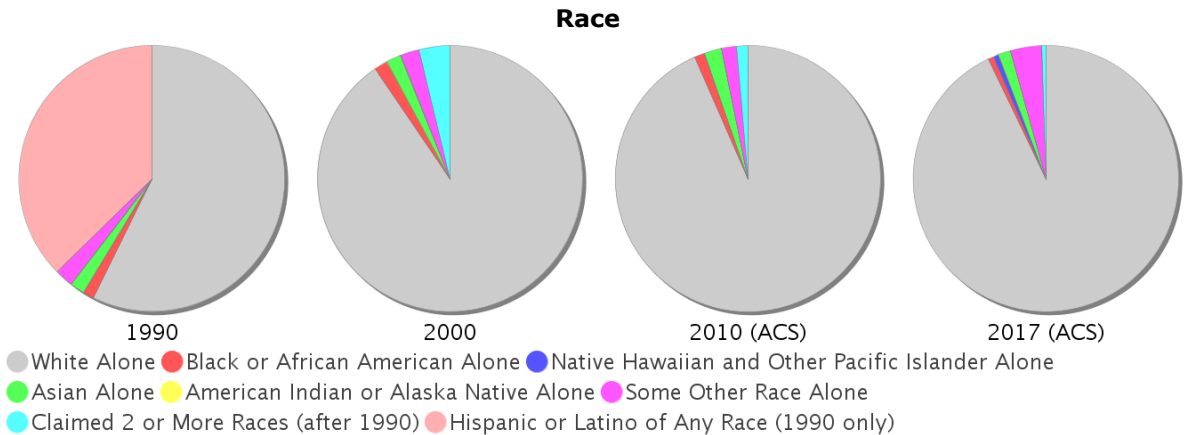
General Population Trends

| Description | 1990 | 2000 | 2010 (ACS) | 2017 (ACS) |
|-------------------------------|--------|--------|------------|------------|
| Total Population | 15,625 | 16,746 | 16,358 | 16,127 |
| Total Households | 4,985 | 5,396 | 5,342 | 4,807 |
| Average Persons per Acre | 8.10 | 9.36 | 8.49 | 9.07 |
| Average Persons per Household | 3.08 | 2.92 | 3.00 | 3.38 |
| Average Persons per Family | 3.46 | 3.37 | 3.11 | 3.91 |
| Males | 7,533 | 7,966 | 7,677 | 7,818 |
| Females | 8,092 | 8,780 | 8,680 | 8,309 |

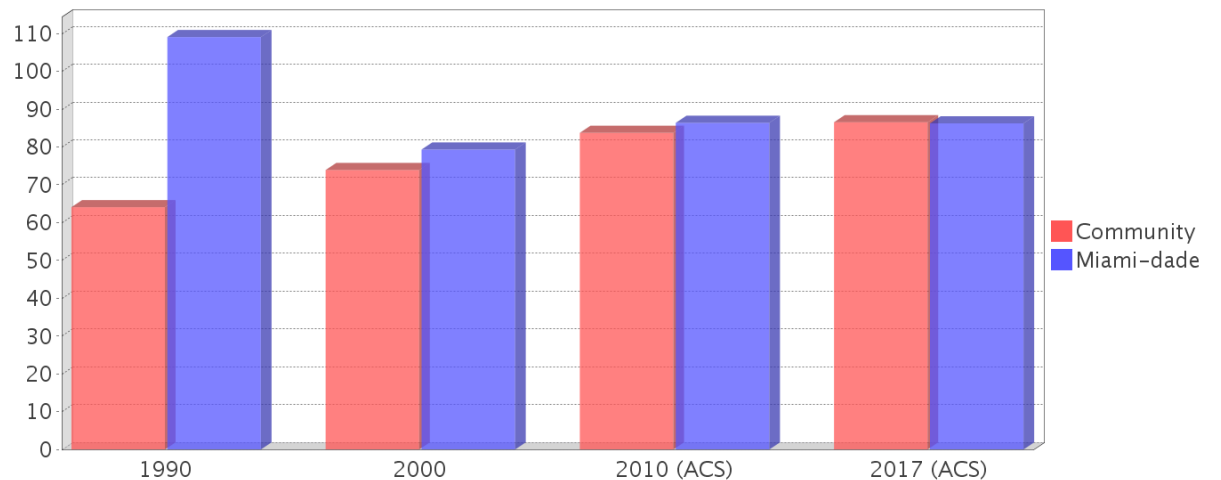


Race and Ethnicity Trends

| Description | 1990 | 2000 | 2010 (ACS) | 2017 (ACS) |
|--|--------------------|--------------------|--------------------|--------------------|
| White Alone | 14,279 (91.39%) | 15,145 (90.44%) | 15,280 (93.41%) | 14,975 (92.86%) |
| Black or African American Alone | 339 (2.17%) | 273 (1.63%) | 208 (1.27%) | 106 (0.66%) |
| Native Hawaiian and Other Pacific Islander Alone | 1 (0.01%) | 0 (0.00%) | 1 (0.01%) | 105 (0.65%) |
| Asian Alone | 432 (2.76%) | 312 (1.86%) | 338 (2.07%) | 241 (1.49%) |
| American Indian or Alaska Native Alone | 18 (0.12%) | 7 (0.04%) | 9 (0.06%) | 6 (0.04%) |
| Some Other Race Alone | 556 (3.56%) | 379 (2.26%) | 296 (1.81%) | 617 (3.83%) |
| Claimed 2 or More Races | NA (NA) | 630 (3.76%) | 225 (1.38%) | 78 (0.48%) |
| Hispanic or Latino of Any Race | 9,309 (59.58%) | 11,618 (69.38%) | 13,145 (80.36%) | 13,519 (83.83%) |
| Not Hispanic or Latino | 6,316 (40.42%) | 5,128 (30.62%) | 3,213 (19.64%) | 2,608 (16.17%) |
| Minority | 10,013 (64.08%) | 12,378 (73.92%) | 13,698 (83.74%) | 13,958 (86.55%) |



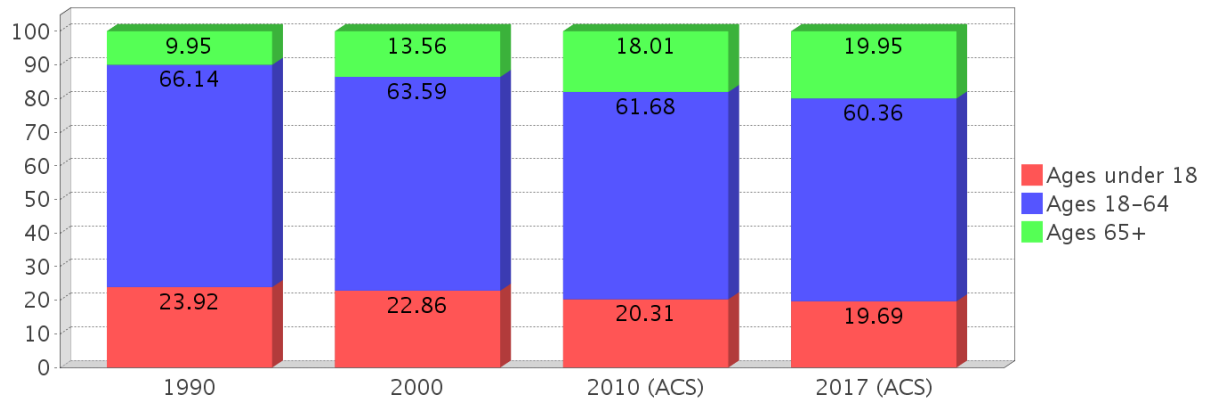
Minority Percentage Population



Age Trends

| Description | 1990 | 2000 | 2010 (ACS) | 2017 (ACS) |
|------------------|--------|--------|------------|------------|
| Under Age 5 | 6.36% | 5.79% | 5.04% | 5.72% |
| Ages 5-17 | 17.56% | 17.07% | 15.26% | 13.97% |
| Ages 18-21 | 6.02% | 5.22% | 5.09% | 4.96% |
| Ages 22-29 | 12.51% | 9.52% | 9.49% | 8.04% |
| Ages 30-39 | 15.64% | 15.22% | 11.77% | 13.60% |
| Ages 40-49 | 14.61% | 15.24% | 16.10% | 12.42% |
| Ages 50-64 | 17.36% | 18.39% | 19.23% | 21.34% |
| Age 65 and Over | 9.95% | 13.56% | 18.01% | 19.95% |
| -Ages 65-74 | 6.15% | 8.08% | 9.76% | 10.18% |
| -Ages 75-84 | 3.03% | 4.09% | 5.92% | 6.31% |
| -Age 85 and Over | 0.76% | 1.39% | 2.32% | 3.47% |
| Median Age | NA | 39 | 44 | 46 |

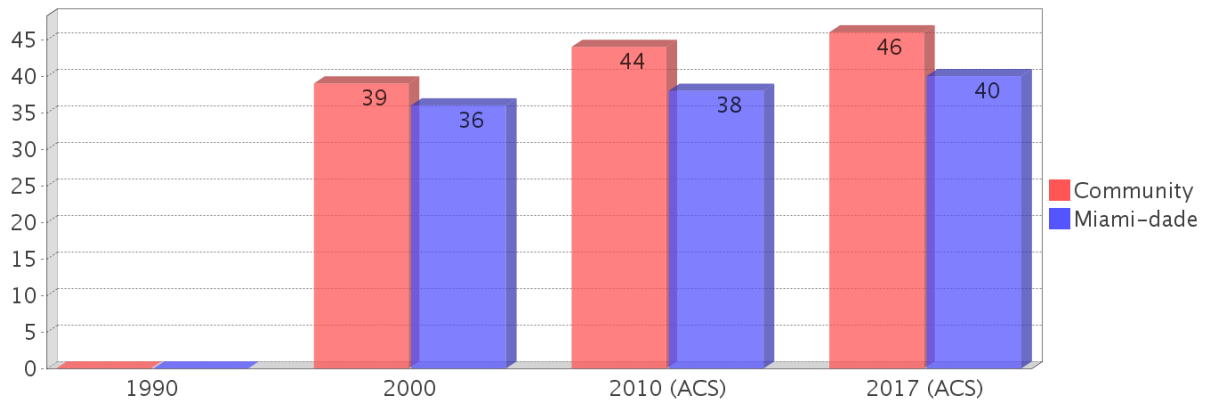
Percentage Population by Age Group



Income Trends

| Description | 1990 | 2000 | 2010 (ACS) | 2017 (ACS) |
|--|----------|----------|------------|------------|
| Median Household Income | \$42,216 | \$55,337 | \$57,794 | \$70,944 |
| Median Family Income | \$45,814 | \$58,634 | \$63,245 | \$76,902 |
| Population below Poverty Level | 6.47% | 6.65% | 9.65% | 10.65% |
| Households below Poverty Level | 6.28% | 7.08% | 9.06% | 12.11% |
| Households with Public Assistance Income | 3.05% | 2.71% | 0.86% | 2.12% |

Median Age Comparison

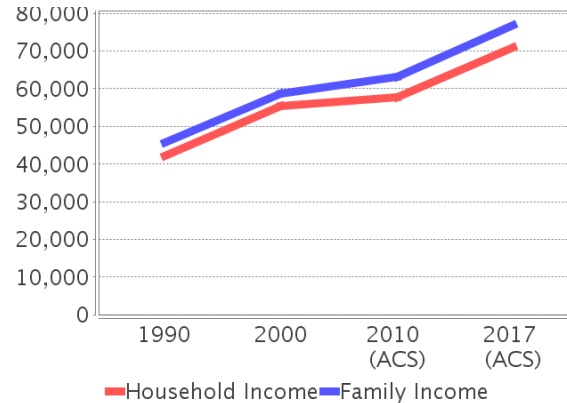


Disability Trends

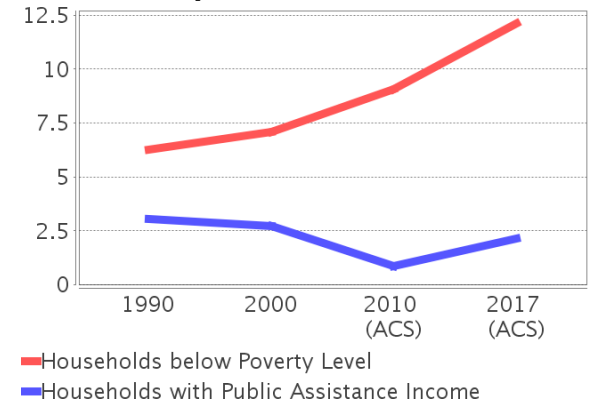
See the Data Sources section below for an explanation about the differences in disability data among the various years.

| Description | 1990 | 2000 | 2010 (ACS) | 2017 (ACS) |
|---|-------------|--------------|------------|-------------|
| Population 16 To 64 Years with a disability | 502 (4.04%) | 1534 (9.77%) | (NA) | (NA) |
| Population 20 To 64 Years with a disability | (NA) | (NA) | (NA) | 520 (5.55%) |

Income Trends



Poverty and Public Assistance



Educational Attainment Trends

Age 25 and Over

| Description | 1990 | 2000 | 2010 (ACS) | 2017 (ACS) |
|--------------------------------|----------------|----------------|----------------|-----------------|
| Less than 9th Grade | 1,064 (10.33%) | 906 (7.96%) | 842 (7.40%) | 856 (7.30%) |
| 9th to 12th Grade, No Diploma | 1,031 (10.01%) | 1,174 (10.31%) | 1,130 (9.94%) | 599 (5.11%) |
| High School Graduate or Higher | 8,204 (79.66%) | 9,308 (81.74%) | 9,399 (82.66%) | 10,270 (87.59%) |
| Bachelor's Degree or Higher | 2,716 (26.37%) | 3,554 (31.21%) | 3,957 (34.80%) | 4,691 (40.01%) |

Language Trends

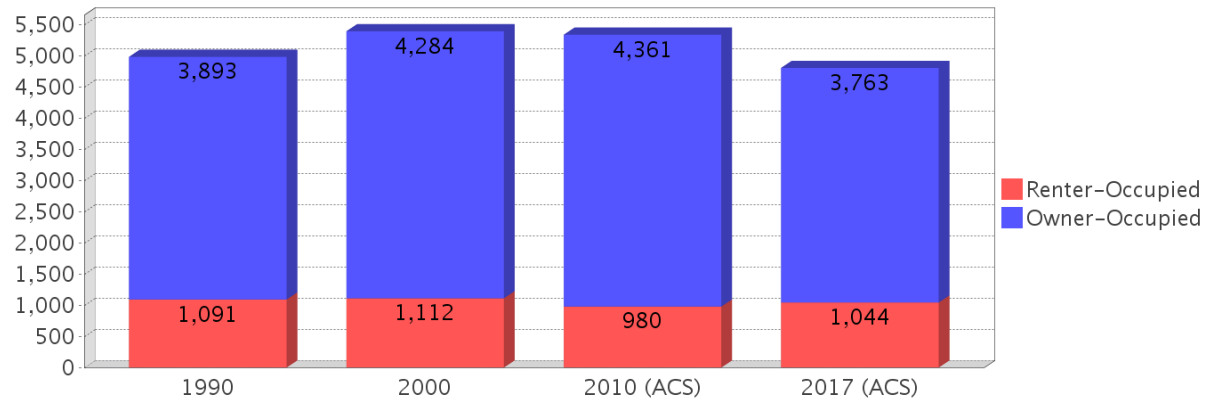
Age 5 and Over

| Description | 1990 | 2000 | 2010 (ACS) | 2017 (ACS) |
|---------------------------------------|----------------|----------------|----------------|----------------|
| Speaks English Well | 1,915 (12.98%) | 2,204 (13.97%) | 1,901 (12.38%) | 2,054 (13.51%) |
| Speaks English Not Well | NA (NA) | 1,624 (10.29%) | 1,931 (12.57%) | 1,901 (12.50%) |
| Speaks English Not at All | NA (NA) | 840 (5.32%) | 743 (4.84%) | 869 (5.72%) |
| Speaks English Not Well or Not at All | 1,835 (12.44%) | 2,464 (15.62%) | 2,674 (17.41%) | 2,770 (18.22%) |

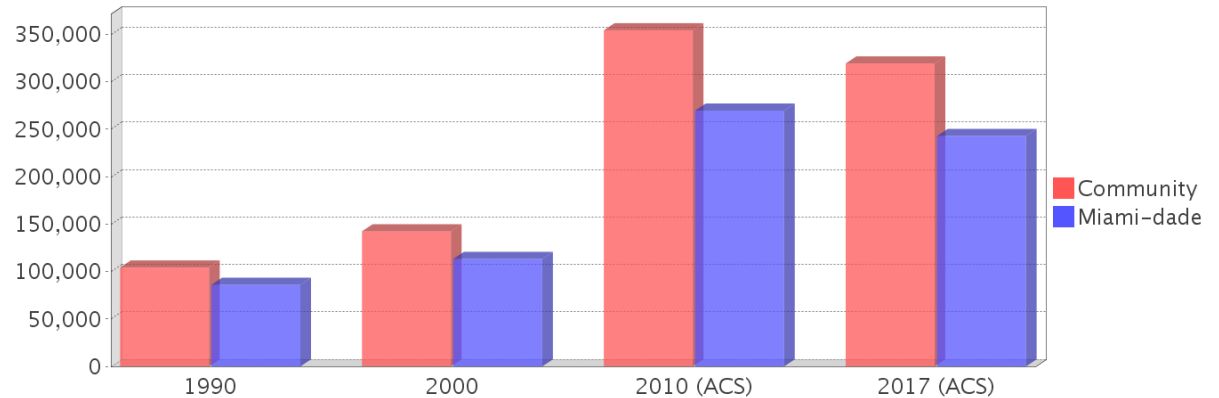
Housing Trends

| Description | 1990 | 2000 | 2010 (ACS) | 2017 (ACS) |
|-------------------------------------|-------------|-------------|-------------|-------------|
| Total | 5,164 | 5,514 | 5,578 | 5,305 |
| Units per Acre | 2.35 | 2.47 | 2.54 | 2.42 |
| Single-Family Units | 4,274 | 4,768 | 4,828 | 4,524 |
| Multi-Family Units | 692 | 745 | 737 | 704 |
| Mobile Home Units | 0 | 0 | 0 | 77 |
| Owner-Occupied Units | 3,893 | 4,284 | 4,361 | 3,763 |
| Renter-Occupied Units | 1,091 | 1,112 | 980 | 1,044 |
| Vacant Units | 179 | 118 | 236 | 497 |
| Median Housing Value | \$104,150 | \$142,400 | \$354,250 | \$319,250 |
| Occupied Housing Units w/No Vehicle | 220 (4.41%) | 216 (4.00%) | 212 (3.97%) | 126 (2.62%) |

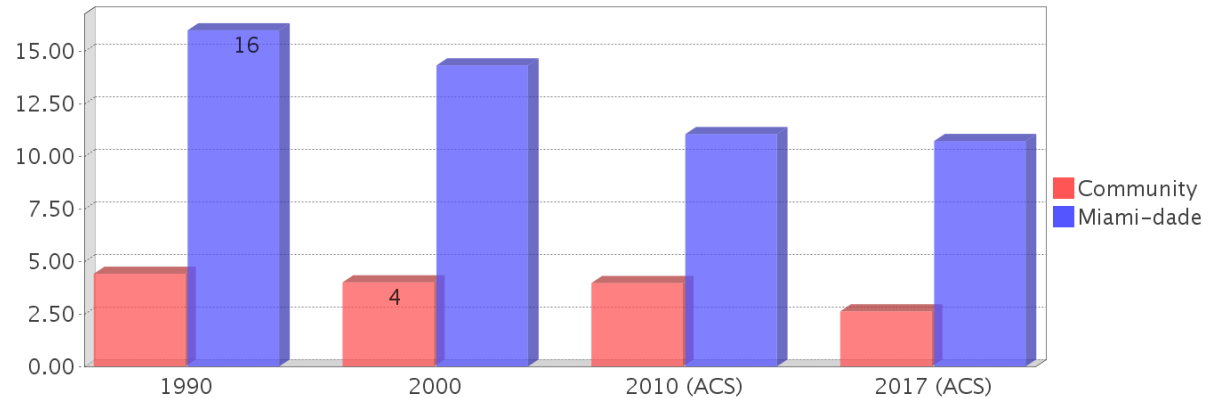
Housing Tenure



Median Housing Value Comparison

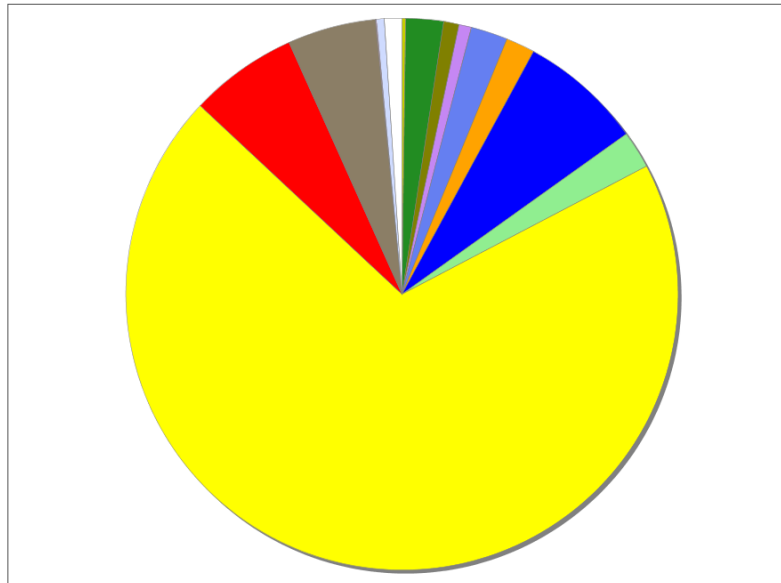


Occupied Units With No Vehicles Available



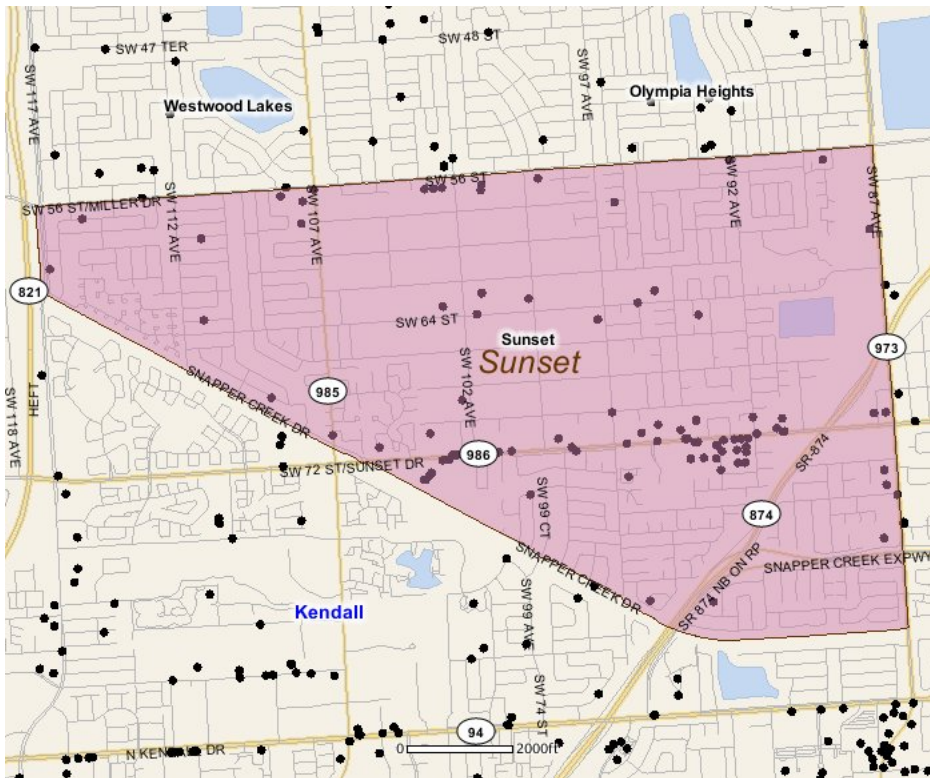
Existing Land Use

| Land Use Type | Acres | Percentage |
|-----------------------------------|-------|------------|
| Acreage Not Zoned For Agriculture | 4 | 0.18% |
| Agricultural | 39 | 1.72% |
| Centrally Assessed | 16 | 0.70% |
| Industrial | 13 | 0.57% |
| Institutional | 38 | 1.67% |
| Mining | 0 | 0.00% |
| Other | 30 | 1.32% |
| Public/Semi-Public | 128 | 5.64% |
| Recreation | 39 | 1.72% |
| Residential | 1,234 | 54.36% |
| Retail/Office | 112 | 4.93% |
| Row | 0 | 0.00% |
| Vacant Residential | 92 | 4.05% |
| Vacant Nonresidential | 1 | 0.04% |
| Water | 8 | 0.35% |
| Parcels With No Values | 18 | 0.79% |



- Acreage Not Zoned For Agriculture
- Agricultural
- Centrally Assessed
- Industrial
- Institutional
- Mining
- Other
- Public/Semi-Public
- Recreation
- Residential
- Retail/Office
- Row
- Vacant Residential
- Vacant Nonresidential
- Water
- Parcels With No Values

Location Maps



Community Facilities

The community facilities information below is useful in a variety of ways for environmental evaluations. These community resources should be evaluated for potential sociocultural effects, such as accessibility and relocation potential. The facility types may indicate the types of population groups present in the project study area. Facility staff and leaders can be sources of community information such as who uses the facility and how it is used. Additionally, community facilities are potential public meeting venues.

Community Centers (Points)

| Facility Name | Address | Zip Code |
|--|-------------------------|----------|
| YMCA - MIAMI | 10151 SW 64TH ST | 33173 |
| TAOIST TAI CHI SOCIETY OF TEH USA | 10300 SW 72ND ST | 33173 |
| AMERICAN LEGION POST 346 | 9300 SW 72ND ST | 33173 |
| LIONS CLUB - MIAMI BUENA VISTA-BILTMORE | MILLER RD & SW 88TH AVE | 33173 |
| VFW POST 10212 - JOSE MARTI | 9300 SUNSET DR | 33173 |
| VVA CHAPTER 620 | 9300 SW 72ND ST | 33173 |
| ELKS LODGE 948 | 10301 SW 72ND ST | 33173 |
| MILDRED PEPPER MULTI-PURPOSE SENIOR CENTER | 10000 SW 56 ST | 33174 |

Fire Stations (Points)

| Facility Name | Address | Zip Code |
|---|------------------|----------|
| MIAMI-DADE COUNTY FIRE DEPARTMENT STATION 13 (OLD HEADQUARTERS BUILDING) | 6000 SW 87TH AVE | 33173 |

Florida Parks and Recreational Facilities (Points)

| Facility Name | Address | Zip Code |
|------------------|------------------|----------|
| SUNSET PARK | 7321 SW 97TH AVE | 33173 |
| KENDALLWOOD PARK | 9304 SW 80 ST | 33173 |

Healthcare Facilities (Geocoded)

| Facility Name | Address | Zip Code |
|--|-----------------------------------|----------|
| SUNSET MEDICAL NETWORK INC. | 10300 SW 72 STREET, SUITE 350 | 33173 |
| ROSEN M.D. P.A. KENNETH A. | 10300 SW 72 STREET, SUITE 150 | 33173 |
| R. ABREU M.D., P.A. | 10300 SW 72 STREET, SUITE 220 | 33173 |
| UNIVERSITY HEALTH CARE MILLER INC. | 10000 SW 56 STREET, SUITE 29 | 33165 |
| BARRY REED MD | 7000 SW 97 AVENUE, SUITE 207 | 33173 |
| JOHN C. AYALA MD PA | 7000 SW 97 AVENUE, SUITE 108 | 33173 |
| CHILITO ALICIA M.D. P.A. | 7000 SW 97 AVENUE, SUITE 104 | 33173 |
| TEJERO, HILDA T., M.D. | 9495 SUNSET DRIVE, SUITE B | 33173 |
| FAMILY MEDICINE OF MIAMI P.A. | 9485 SW 72 STREET, SUITE A-104 | 33173 |
| I. ANTHONY CARDELLA M.D. LLC | 7300 SW 93 AVENUE, SUITE 200 | 33173 |
| ROSANNA BUIGAS MD PA | 7265 SW 93 AVENUE, SUITE 203 | 33173 |
| ALBITE AND FERNANDEZ M.D. P.A. | 9210 SW 72 STREET, SUITE 100 | 33173 |
| FLORIDA CENTER FOR ALLERGY & ASTHMA CARE | 9035 SUNSET DRIVE, SUITE 202 | 33173 |
| PMC KENDALL LLC | 7800 SW 87 AVENUE, SUITE C 320 | 33173 |
| FELIPE DEL VALLE M.D. P.A | 7190 SW 87 STREET, SUITE 203 | 33173 |
| WEST KENDALL SURGERY CENTER | 7600 SW 87 AVENUE, SUITE 200 | 33173 |
| GALLOWAY SURGERY CENTER | 7600 SW 87 AVENUE, SUITE 100 | 33173 |
| UROLOGY SPECIALTY CARE OF MIAMI, LLC | 7600 SW 87TH AVENUE, STOP 206 | 33173 |
| KIDS FITNESS FOR LIFE, LLC | 10271 SW 72ND STREET, SUITE D-101 | 33173 |
| ANA J. FANDINO MD PA | 10281 SUNSET DRIVE 101 | 33173 |
| OCULAR SURFACE CENTER P.A. | 7000 SW 97 AVENUE, SUITE 213 | 33173 |
| RAJESH DHAIRYAWAN M.D. P.A | 7000 SW 97 AVENUE, SUITE 102 | 33173 |
| VALDES MEDICAL CENTER, LLC | 7000 SW 97 AVENUE, SUITE 1069 | 33173 |
| LOMAN & MUINA M.D.'S PA | 9195 SUNSET DRIVE, SUITE 210 | 33173 |
| CARVAJAL M.D. PA PEDRO | 9195 SUNSET DRIVE, SUITE 100 | 33173 |
| SKIN & CANCER ASSOCIATES - J. CROWELL | 7800 SW 87 AVENUE, SUITE C-300 | 33173 |
| ASTHMA & ALLERGY ASSOCIATES OF FL, P.A. | 7800 SW 87 AVENUE, SUITE C-340 | 33173 |

| Facility Name | Address | Zip Code |
|--|------------------------------------|----------|
| COHEN M.D. MARTIN S. | 7800 SW 87 AVENUE, SUITE 130 | 33173 |
| GASTRO HEALTH PL | 7500 SW 87 AVENUE, SUITE 200 | 33173 |
| RIM PROFESSIONAL THERAPY GROUP LLC | 10300 SW 72 STREET 333 | 33173 |
| VARGAS DIANA E. M.D. P.A. | 10250 SW 56 TH STREET, SUITE B-103 | 33165 |
| CPC MEDICAL CENTER | 10240 SW 56 STREET, SUITE 106 | 33165 |
| MOBILE X PRESS RAY INC. | 9995 SW 72 STREET, SUITE 202 | 33173 |
| BAPTIST HEALTH MEDICAL GROUP - PRIMARY CARE | 7101 SW 99 AVENUE, SUITE 108 | 33173 |
| ADVANCE HEALTH SERVICES III, INC. | 7000 SW 97 AVENUE, SUITE 120 | 33173 |
| CANTON ENRIQUE J. M.D. | 9360 SUNSET DRIVE, SUITE 205 | 33173 |
| MIAMI CHILDREN'S HOSPITAL ALISA MUNIZ CRIM, M.D. | 9260 SW 72 STREET, SUITE 218 | 33173 |
| KENDALL FAMILY MEDICAL CENTER | 9220 SW 72 STREET, SUITE 202 | 33173 |
| CHAVEZ CAMILLE D. M.D. P.A. | 9220 SUNSET DRIVE, SUITE 105 | 33173 |
| CESAR E. CEBALLOS M.D. P.A. | 7800 SW 87 AVENUE, SUITE A-110 | 33173 |
| GLICK, MD LLC., HENRY | 7800 SW 87 AVENUE A-120 | 33173 |
| CENTER FOR ARTHRITIS AND RHEUMATIC DISEASE | 7190 SW 87 AVENUE, SUITE 304 | 33173 |
| IMAGOS INSTITUTE OF PLASTIC SURGERY | 7190 SW 87 AVENUE, SUITE 404 | 33173 |
| MANUEL A TORRES SALICHS MD LLC | 7500 SW 87 AVENUE | 33173 |
| SUNSET MEDICAL GROUP, INC. | 10300 SW 72 STREAM, SUITE 152 | 33173 |
| RODRIGUEZ-ALONSO MADELEINE MD. PA. | 10281 SUNSET DRIVE, SUITE 101B | 33173 |
| HAYDAR MD PA VICTORIA E. | 10251 SW 72 STREET, SUITE 102 | 33173 |
| LARKIN IMAGING CENTERS | 7101 SW 99 AVENUE, SUITE 106 | 33173 |
| CARDIOVASCULAR INTERVENTIONS OF MIAMI | 7000 SW 97 AVENUE, SUITE 208 | 33173 |
| BARRIO M.D. JUAN L. | 9495 SW 72 STREET, SUITE B210 | 33173 |
| TELLUS CLINICAL RESEARCH | 9425 SW SUNSET DRIVE, SUITE 136 | 33173 |
| RESPECT LIFE | 9360 SW 72 STREET, SUITE 238 | 33173 |
| BARDISA MEDICAL CENTER LLC | 7374 SW 93 AVENUE, SUITE 203 | 33173 |
| ROSAMUNDO, LLC | 7265 SW 93 AVENUE, SUITE 202 | 33173 |
| HERON PATRICK MD. FACOG PA | 9290 SW 72 STREET, SUITE 101 | 33173 |
| CACERES, LUIS R. | 9260 SW 72 STREET, SUITE 115 | 33173 |
| DR. CARLOS RAMIREZ-CALDERON | 9240 SUNSET DRIVE, SUITE 238 | 33173 |
| MIAMI INFECTIOUS DISEASE | 9240 SW 72 STREET, SUITE 241 | 33173 |
| MIAMI INTERNATIONAL SURGEONS SERVICES | 9195 SUNSET DRIVE, SUITE 230 | 33173 |
| SUNSET CARDIOLOGY P.L | 9193 SW 72 STREET, SUITE 210 | 33173 |
| CIOCCA DERMATOLOGY PA | 7800 SW 87 AVENUE, SUITE A-100 | 33173 |
| FEMCARE OB/GYM.LLC. | 7800 SW 87 AVENUE, SUITE A-120 | 33173 |
| BAPTIST HEALTH MEDICAL GROUP-GENERAL SURGERY | 7800 SW 87TH AVENUE, SUITE B-210 | 33173 |
| CEO CENTER FOR EXECUTIVE OPHTHALMOLOGY | 10260 SW 56 STREET, SUITE 104 | 33165 |
| GARCIA M.D. RENE J. | 10260 SW 56 STREET | 33165 |
| WESTCHESTER PEDIATRICS LLC | 10300 SUNSET DRIVE, SUITE 351 | 33173 |
| BRADY M.D. A.H. | 10105 SUNSET DRIVE | 33173 |
| RESEARCH INSTITUTE OF SOUTH FLORIDA | 9835 SW 72 STREET, SUITE 201 | 33173 |
| YOHAMA LORENZO DMD PA | 7000 SW 97 AVENUE, SUITE 204 | 33173 |
| SUNSET RADIOLOGY | 7000 SW 97 AVENUE 117 | 33173 |
| PEDRO U. DE LA ROSA-COSTA, M.D. | 9350 SW 72 STREET, SUITE 112 | 33173 |
| ESSENCE DAY SPA. | 7300 SW 93 AVENUE, SUITE 200 | 33173 |
| LUCAS PORRELLO M.D | 7374 SW 93 AVENUE, SUITE 201 | 33173 |
| PRIMARY CARE III | 9290 SW 72 STREET, SUITE 105 | 33173 |
| SHAUGHN C. BENNETT, D.O. P.A. | 9240 SUNSET DRIVE 229 | 33173 |
| RAIZA PEREZ, M.D., PA | 9260 SUNSET DRIVE, SUITE 205 | 33173 |
| CASTRO PEDIATRICS, LLC | 9220 SW 72 STREET, SUITE 102 | 33173 |
| ALBA T. MARTINEZ MD PA | 9210 SW 72 STREET, SUITE 101 | 33173 |
| LLANEZA M.D. P.A. PEDRO P. | 9195 SUNSET DRIVE, SUITE 120 | 33173 |
| SUAREZ GEORGE M. MD. | 9195 SUNSET DRIVE, SUITE 110 | 33173 |
| NEPHROLOGY ASSOC.OF SO.MIAMI P.A. | 9193 SUNSET DRIVE, SUITE 200 | 33173 |
| REDONDO HAND CENTER | 7130 SW 87 COURT, SUITE 100 | 33173 |
| INFECTIOUS DISEASE PHYSICIANS PA\\ | 7800 SW 87 AVENUE, SUITE B260 | 33173 |

| Facility Name | Address | Zip Code |
|--|---------------------------------|----------|
| CARDIOLOGY HEALTHCARE OF SOUTH FLORIDA, CORP | 7190 SW 87 AVENUE, SUITE 202 | 33173 |
| ADVANCE CARDIOVASCULAR IMAGING INC. | 10260 SW 56 STREET, SUITE 102 | 33165 |
| MA-R MEDICAL CENTER INC | 10300 SW 72 STREET, SUITE 311 | 33173 |
| SPECIAL CARE PEDIATRICS | 10240 SW 56 STREET, SUITE 108 | 33165 |
| BEUTY & HEALTH CARE INC | 9835 SW 72 STREET, SUITE 203 | 33173 |
| MARTINEZ-NODA PETER DOPA | 7000 SW 97 AVENUE, SUITE 101 | 33173 |
| MARY A. CROSS M.D. | 9485 SW 72 STREET A-195 | 33173 |
| BIO FIT ANTI-AGING INSTITUTE LLC | 9415 SUNSET DRIVE, SUITE 143 | 33173 |
| SOUTH FLORIDA INSTITUTE OF PAIN MANAGEMENT LLC | 9370 SW 72 STREET, SUITE A-150 | 33173 |
| DE QUESADA GONZALO MD | 9360 SW 72 STREET, SUITE 205 | 33173 |
| JORGE DE LA PEDRAJA, MD., PA. | 7300 SW 93 AVENUE, SUITE 200 | 33173 |
| JUAN C. PEREZ - MORALES M.D. | 7265 SW 93RD AVENUE, SUITE 201 | 33173 |
| ELENA VALOR MD | 9240 SUNSET DRIVE, SUITE 229 | 33173 |
| MICHAEL A. DIAMOND MD PA | 9220 SW 72 STREET, SUITE 200 | 33173 |
| FIU HEALTH | 9200 SUNSET DRIVE, BUILDING 4 | 33173 |
| NELSON P. CHAMBLESS, M.D., P.A. | 9195 SW 72 STREET, SUITE 200 | 33173 |
| BMA KENDALL | 9193 SW 72 STREET, SUITE 100 | 33173 |
| V R RIVERA,MD.LLC | 7800 SW 87 AVENUE, SUITE A110 | 33173 |
| DIAGNOSTIC CENTER FOR WOMEN L L C | 7500 SW 87 AVENUE, SUITE 100 | 33173 |
| PHYSICAL THERAPY GROUP SERVICES INC | 10300 SW 72 STREET, SUITE 205 | 33173 |
| BODY RX ANTI-AGING | 10261 SW 72 STREET, SUITE C-105 | 33173 |
| LARKIN COMMUNITY HOSPITAL IMAGING CENTERS/ SLEEP C | 9835 SW 72 STREET, SUITE 107 | 33173 |
| LEON M.D. P.A. ORLANDO J. | 9260 SW 72 STREET, SUITE 107 | 33173 |
| STUART B. KROST M.D. P.A | 9220 SW 72 STREET, SUITE 106 | 33173 |
| UROLOGY CENTER OF SOUTH FLORIDA | 7400 SW 87 AVENUE, SUITE 240 | 33173 |
| MIAMI SUNSET SURGERY CENTER | 7190 SW 87 AVENUE, SUITE 403 | 33173 |
| ADVANCE MEDICAL RESEARCH SERVICE CORP. | 10260 SW 56TH STREET, SUITE 103 | 33165 |
| ACCPs LLC | 10300 SUNSET DRIVE, SUITE 357 | 33173 |
| SOMOANO M.D. PA JULIO | 7000 SW 97 AVENUE, SUITE 209 | 33173 |
| KALSKI RICHARD S. MD PA. | 7000 SW 97 AVENUE, SUITE 114 | 33173 |
| ROBERT H. HUNSAKER M.D. P.A. | 9495 SUNSET DRIVE, SUITE B150 | 33173 |
| MILLENNIUM WOMEN CENTER INC. | 9370 SW 72 STREET, SUITE A104 | 33173 |
| GASTRO HEALTH (RUBEN GONZALEZ-VALLINA, MD PA) | 9260 SW 72 STREET 217 | 33173 |
| MIAMI CARDIOVASCULAR SPECIALISTS PA | 9240 SW 72 STREET, SUITE 240 | 33173 |
| SOUTH FLORIDA PEDIATRIC PATNERS. | 7800 SW 87 AVENUE, SUITE C-350 | 33173 |
| INTEGRATED DERMATOLOGY OF SOUTH MIAMI LLC | 7800 SW 87 AVENUE, SUITE B200 | 33173 |
| BHMG-PCMH AT GALLOWAY | 7400 SW 87 AVENUE, SUITE 200 | 33173 |
| CARDIOVASCULAR CTR. OF SO. FL. | 7400 SW 87 AVENUE, SUITE 100 | 33173 |
| JULIO ROBLA M.D.P.A. | 7600 SW 87 AVENUE, SUITE 102 | 33173 |

Public and Private Schools (Points)

| Facility Name | Address | Zip Code |
|-----------------------------------|--------------------------|----------|
| BRIDGEPREP ACADEMY SOUTH | 10700 SW 56 ST | 33165 |
| HAPPY FACES ACADEMY LLC | 9557 S.W. 72 STREET | 33173 |
| AMERICAN HIGH SCHOOL ACADEMY INC. | 10300 SW 72 STREET # 427 | 33173 |
| GLADES MIDDLE SCHOOL | 9451 SW 64TH ST | 33173 |
| FORTIS INSTITUTE-MIAMI | 9035 SUNSET DRIVE | 33173 |
| SNAPPER CREEK ELEMENTARY SCHOOL | 10151 SW 64TH ST | 33173 |
| AMERICAN HIGH SCHOOL ACADEMY | 10300 SW 72ND ST STE 427 | 33173 |
| TRUE NORTH CLASSICAL ACADEMY | 9393 SW 72ND ST | 33173 |

Religious Centers (Points)

| Facility Name | Address | Zip Code |
|---------------------------|----------------------|----------|
| SOUTHWEST ALLIANCE CHURCH | 10251 SW 64TH STREET | 33173 |
| IGLESIA DE DIOS KENDALL | 6814 SW 102ND AVENUE | 33173 |
| GATEWAY BAPTIST CHURCH | 6500 SW 97TH AVENUE | 33173 |

| Facility Name | Address | Zip Code |
|-----------------------------------|----------------------|----------|
| SUNSET CONGREGATIONAL CHURCH | 9025 SW 72ND STREET | 33173 |
| SUKYO MAHIKARI | 10300 SW 72ND ST | 33173 |
| IGLESIA METODISTA UNIDAD WESTWOOD | 10780 SW 56TH ST | 33165 |
| BIBLE TRUTH CHAPEL | 6300 SW 99TH AVENUE | 33173 |
| WORD OF GOD CHRISTIAN CHURCH | 10109 SW 72ND ST | 33173 |
| CRISTO LA SOLUCION | 9860 SW 56TH STREET | 33165 |
| IGLESIA LUTERANA SAN PABLO | 10700 SW 56TH STREET | 33165 |
| SUNSET CHAPEL ASSEMBLY OF GOD | 9393 SW 72ND STREET | 33173 |

US Census Places

Facility Name

| |
|-----------------|
| Glenvar Heights |
| Kendall |
| Westwood Lakes |
| Sunset |
| Olympia Heights |

Veteran Organizations and Facilities (Points)

| Facility Name | Address | Zip Code |
|-----------------------------|-------------------|----------|
| VVA CHAPTER 620 | 9300 SW 72ND ST | 33173 |
| AMERICAN LEGION POST 346 | 9300 SW 72ND ST | 33173 |
| VFW POST 10212 - JOSE MARTI | 9300 SUNSET DRIVE | 33173 |

Block Groups

The following Census Block Groups were used to calculate demographics for this report.

1990 Census Block Groups

120250086004, 120250077033, 120250086002, 120250084071, 120250077023, 120250085012, 120250086005, 120250087008, 120250085021, 120250086003, 120250085013, 120250084072, 120250085016

2000 Census Block Groups

120860086023, 120860087002, 120860086011, 120860101114, 120860086012, 120860084072, 120860084071, 120860077023, 120860087008, 120860085016, 120860085013, 120860077025, 120860087003, 120860085021, 120860084132, 120860085012, 120860086021, 120860078031, 120860086022, 120860077033

2010 Census Block Groups

120860077051, 120860087014, 120860085022, 120860084074, 120860077021, 120860086023, 120860087023, 120860086011, 120860077023, 120860086021, 120860086012, 120860084071, 120860085013, 120860085012, 120860087011, 120860085021, 120860086022, 120860085011, 120860084073

2017 Census Block Groups

120860085021, 120860077023, 120860086011, 120860086022, 120860087023, 120860086021, 120860085011, 120860084074, 120860085012, 120860084073, 120860077051, 120860077021, 120860087014, 120860087011, 120860085022, 120860085013, 120860086023, 120860084071, 120860086012

Data Sources

Area

The geographic area of the community based on a user-specified community boundary or area of interest (AOI) boundary.

Jurisdiction

Jurisdiction(s) includes local government boundaries that intersect the community or AOI boundary.

Demographic Data

Demographic data reported under the headings General Population Trends, Race and Ethnicity Trends, Age Trends, Income Trends, Educational Attainment Trends, Language Trends, and Housing Trends is from the U.S. Decennial Census (1990, 2000) and the American Community Survey (ACS) 5-year estimates from 2006-2010 and 2013-2017. The data was gathered at the block group level for user-specified community boundaries and AOIs, and at the county level for counties. Depending on the dataset, the data represents 100% counts (Census Summary File 1) or sample-based information (Census Summary File 3 or ACS).

About the Census Data:

User-specified community boundaries and AOIs do not always correspond precisely to block group boundaries. In these instances, adjustment of the geographic area and data for affected block groups is required to estimate the actual population. To improve the accuracy of such estimates in the SDR report, the census block group data was adjusted to exclude all census blocks with a population of two or fewer. These areas were eliminated from the corresponding years' block groups. Next, the portion of the block group that lies outside of the community or AOI boundary was removed. The demographics within each block group were then recalculated, assuming an equal area distribution of the population. Note that there may be areas where there is no population.

Use caution when comparing the 100% count data (Decennial Census) to the sample-based data (ACS). In any given year, about one in 40 or 2.5% of U.S. households will receive the ACS questionnaire. Over any five-year period, about one in eight households will receive the questionnaire, as compared to about one in six that received the long form questionnaire for the Decennial Census 2000. (Source: <http://mcdc.missouri.edu/pub/data/acs/Readme.shtml>) The U.S. Census Bureau provides help with this process:

<https://www.census.gov/programs-surveys/acs/guidance/comparing-acs-data/2017.html>

Use caution when interpreting changes in Race and Ethnicity over time. Starting with the 2000 Decennial Census, respondents were given a new option of selecting one or more race categories. Also in 2000, the placement of the question about Hispanic origin changed, helping to increase responsiveness to the Hispanic-origin question. Because of these and other changes, the 1990 data on race and ethnicity are not directly comparable with data from later censuses.

(Source: <http://www.census.gov/prod/2001pubs/c2kbr01-1.pdf>;

<http://www.census.gov/pred/www/rpts/Race%20and%20Ethnicity%20FINAL%20report.pdf>)

The "Minority" calculations are derived from Census and ACS data using both the race and ethnicity responses. On this report, "Minority" refers to individuals who list a race other than White and/or list their ethnicity as Hispanic/Latino. In other words, people who are multi-racial, any single race other than White, or Hispanic/Latino of any race are considered minorities.

Disability data is not included in the 2010 Decennial Census, or the 2006-2010 ACS. This data is available in the 2013-2017 ACS.

Because of changes made to the Census and ACS questions between 1990 and 2017, disability variables should not be compared from year to year. For example: 1) With the 1990 data the disabilities are listed as a "work disability" while this distinction is not made with 2000 or 2017 ACS data; 2) The 2017 ACS data includes the institutionalized population (e.g. persons in prisons and group homes), while this population is not included in 1990 or 2000; 3) the age groupings changed over the years.

Please take the following two concerns into account when viewing this data: 1) With the 1990 data the disabilities are listed as a "work disability" while this distinction is not made with 2000 or 2017 ACS data; 2) The 2017 ACS data includes the institutionalized population (e.g. persons in prisons and group homes), while this population is not included in 1990 or 2000.

The category Bachelor's Degree or Higher under the heading Educational Attainment Trends is a subset of the category High School Graduate or Higher.

Income of households. This includes the income of the householder and all other individuals 15 years old and over in the household, whether they are related to the householder or not. Because many households consist of only one person, average household income is usually less than average family income.

Income of families. In compiling statistics on family income, the incomes of all members 15 years old and over related to the householder are summed and treated as a single amount.

Age Trends median age for 1990 is not available.

Land Use Data

The Land Use information Indicates acreages and percentages for the generalized land use types used to group parcel-specific, existing land use assigned by the county property appraiser office according to the Florida Department of Revenue land use codes.

Community Facilities Data

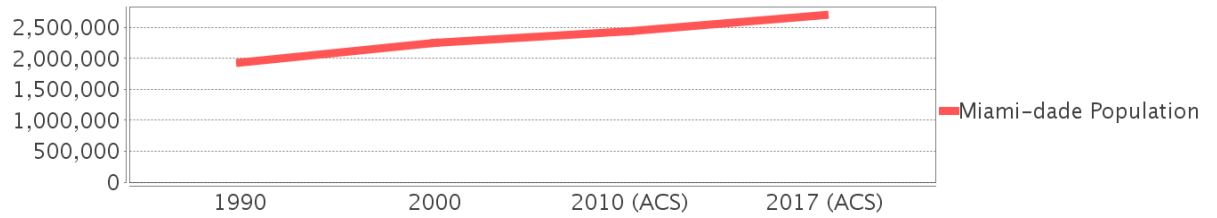
- Assisted Rental Housing Units - Identifies multifamily rental developments that receive funding assistance under federal, state, and local government programs to offer affordable housing as reported by the Shimberg Center for Housing Studies, University of Florida.
- Mobile Home Parks - Identifies approved or acknowledged mobile home parks reported by the Florida Department of Business and Professional Regulation and Florida Department of Health.
- Migrant Camps - Identifies migrant labor camp facilities inspected by the Florida Department of Health.
- Group Care Facilities - Identifies group care facilities inspected by the Florida Department of Health.
- Community Center and Fraternal Association Facilities - Identifies facilities reported by multiple sources.
- Law Enforcement Correctional Facilities - Identifies facilities reported by multiple sources.
- Cultural Centers - Identifies cultural centers including organizations, buildings, or complexes that promote culture and arts (e.g., aquariums and zoological facilities; arboreta and botanical gardens; dinner theaters; drive-ins; historical places and services; libraries; motion picture theaters; museums and art galleries; performing arts centers; performing arts theaters; planetariums; studios and art galleries; and theater producers stage facilities) reported by multiple sources.
- Fire Department and Rescue Station Facilities - Identifies facilities reported by multiple sources.
- Government Buildings - Identifies local, state, and federal government buildings reported by multiple sources.
- Health Care Facilities - Identifies health care facilities including abortion clinics, dialysis clinics, medical doctors, nursing homes, osteopaths, state laboratories/clinics, and surgicenters/walk-in clinics reported by the Florida Department of Health.
- Hospital Facilities - Identifies hospital facilities reported by multiple sources.
- Law Enforcement Facilities - Identifies law enforcement facilities reported by multiple sources.
- Parks and Recreational Facilities - Identifies parks and recreational facilities reported by multiple sources.
- Religious Center Facilities - Identifies religious centers including churches, temples, synagogues, mosques, chapels, centers, and other types of religious facilities reported by multiple sources.
- Private and Public Schools - Identifies private and public schools reported by multiple sources.
- Social Service Centers - Identifies social service centers reported by multiple sources.
- Veteran Organizations and Facilities

Miami-dade County Demographic Profile

General Population Trends - Miami-dade

| Description | 1990 | 2000 | 2010 (ACS) | 2017 (ACS) |
|-------------------------------|-----------|-----------|------------|------------|
| Total Population | 1,937,094 | 2,253,362 | 2,445,374 | 2,702,602 |
| Total Households | 692,355 | 776,774 | 827,556 | 858,289 |
| Average Persons per Acre | 1.528 | 1.774 | 1.925 | 2.128 |
| Average Persons per Household | 2.798 | 2.84 | 3.00 | 3.09 |
| Average Persons per Family | 3.413 | 3.488 | 3.591 | 3.926 |
| Males | 928,411 | 1,086,558 | 1,182,784 | 1,311,997 |
| Females | 1,008,683 | 1,166,804 | 1,262,590 | 1,390,605 |

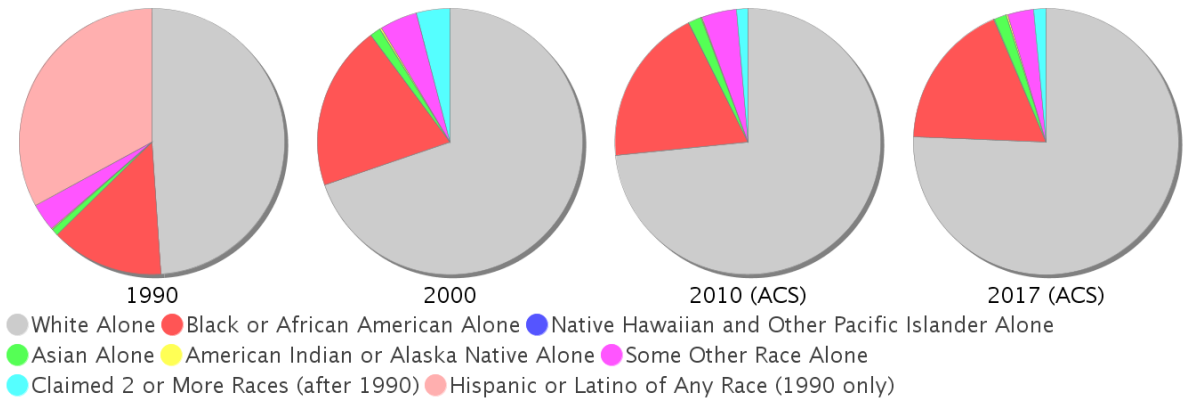
Miami-dade County Population



Race and Ethnicity Trends - Miami-dade

| Description | 1990 | 2000 | 2010 (ACS) | 2017 (ACS) |
|--|------------------------|-----------------------|-----------------------|-----------------------|
| White Alone | 1,413,015 (72.95%) | 1,570,990 (69.72%) | 1,794,730 (73.39%) | 2,043,272 (75.60%) |
| Black or African American Alone | 397,993 (20.55%) | 452,333 (20.07%) | 470,326 (19.23%) | 485,602 (17.97%) |
| Native Hawaiian and Other Pacific Islander Alone | (NA) | 605 (0.03%) | 649 (0.03%) | 724 (0.03%) |
| Asian Alone | 25,869 (1.34%) | 30,692 (1.36%) | 38,813 (1.59%) | 42,770 (1.58%) |
| American Indian or Alaska Native Alone | 3,066 (0.16%) | 4,841 (0.21%) | 3,572 (0.15%) | 4,040 (0.15%) |
| Some Other Race Alone | 96,713 (4.99%) | 102,436 (4.55%) | 102,938 (4.21%) | 84,892 (3.14%) |
| Claimed 2 or More Races | (NA) | 91,465 (4.06%) | 34,346 (1.40%) | 41,302 (1.53%) |
| Hispanic or Latino of Any Race | 953,407 (49.22%) | 1,291,681 (57.32%) | 1,565,410 (64.02%) | 1,823,038 (67.45%) |
| Not Hispanic or Latino | 983,687 (50.78%) | 961,681 (42.68%) | 879,964 (35.98%) | 879,564 (32.55%) |
| Minority | 2,112,884 (109.07%) | 1,787,468 (79.32%) | 2,112,884 (86.40%) | 2,331,369 (86.26%) |

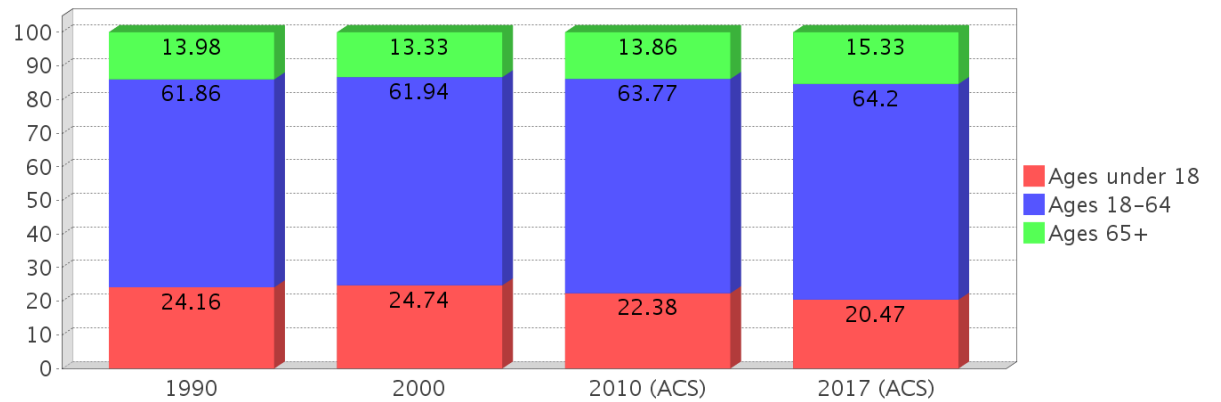
Miami-dade County Race



Age Trends - Miami-dade

| Description | 1990 | 2000 | 2010 (ACS) | 2017 (ACS) |
|------------------|--------|--------|------------|------------|
| Under Age 5 | 7.21% | 6.43% | 6.20% | 5.78% |
| Ages 5-17 | 16.95% | 18.31% | 16.18% | 14.69% |
| Ages 18-21 | 5.60% | 5.24% | 5.83% | 5.06% |
| Ages 22-29 | 13.10% | 10.97% | 10.98% | 11.21% |
| Ages 30-39 | 16.06% | 16.33% | 14.14% | 13.89% |
| Ages 40-49 | 12.47% | 14.49% | 15.67% | 14.68% |
| Ages 50-64 | 14.63% | 14.90% | 17.15% | 19.37% |
| Age 65 and Over | 13.98% | 13.33% | 13.86% | 15.33% |
| -Ages 65-74 | 7.54% | 7.23% | 7.34% | 8.19% |
| -Ages 75-84 | 4.88% | 4.41% | 4.71% | 4.95% |
| -Age 85 and Over | 1.55% | 1.69% | 1.81% | 2.20% |
| Median Age | NA | 36 | 38 | 40 |

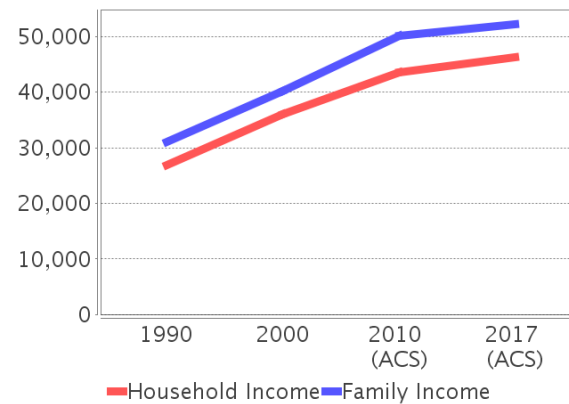
Percentage Population by Age Group - Miami-dade



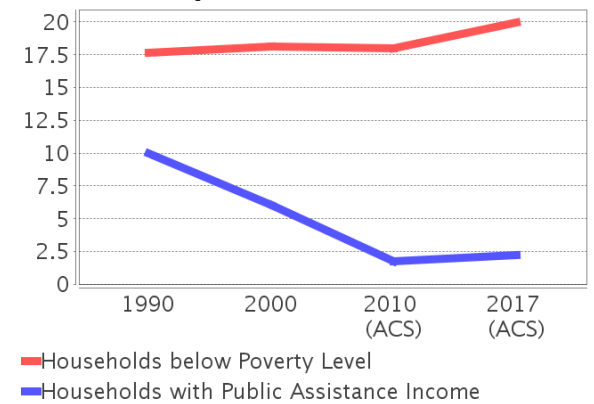
Income Trends - Miami-dade

| Description | 1990 | 2000 | 2010 (ACS) | 2017 (ACS) |
|--|----------|----------|------------|------------|
| Median Household Income | \$26,909 | \$35,966 | \$43,605 | \$46,338 |
| Median Family Income | \$31,113 | \$40,260 | \$50,065 | \$52,235 |
| Population below Poverty Level | 17.94% | 17.97% | 17.18% | 18.98% |
| Households below Poverty Level | 17.62% | 18.10% | 18.02% | 19.95% |
| Households with Public Assistance Income | 9.96% | 6.01% | 1.74% | 2.24% |

Income Trends



Poverty and Public Assistance



Disability Trends - Miami-dade

See the Data Sources section below for an explanation about the differences in disability data among the various years.

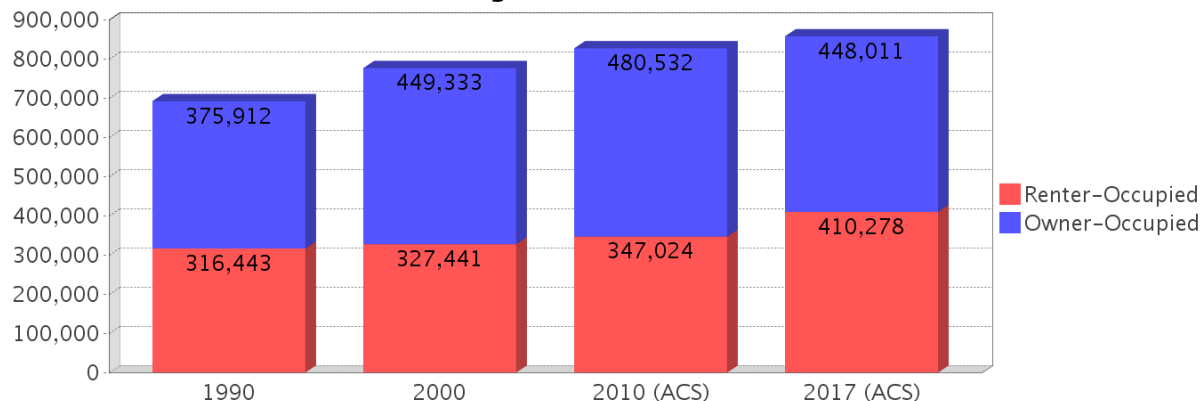
| Description | 1990 | 2000 | 2010 (ACS) | 2017 (ACS) |
|---|----------------|------------------|------------|-----------------|
| Population 16 To 64 Years with a disability | 78,949 (5.28%) | 324,062 (15.60%) | NA (NA) | NA (NA) |
| Population 20 To 64 Years with a disability | NA (NA) | NA (NA) | NA (NA) | 114,936 (6.96%) |

Educational Attainment Trends - Miami-dade

Age 25 and Over

| Description | 1990 | 2000 | 2010 (ACS) | 2017 (ACS) |
|--------------------------------|---------------------|-----------------------|-----------------------|-----------------------|
| Less than 9th Grade | 228,426 (17.83%) | 219,066 (14.68%) | 202,413 (12.23%) | 194,934 (10.23%) |
| 9th to 12th Grade, No Diploma | 219,856 (17.16%) | 260,287 (17.45%) | 178,335 (10.77%) | 167,399 (8.78%) |
| High School Graduate or Higher | 833,013 (65.01%) | 1,012,436 (67.87%) | 1,274,809 (77.00%) | 1,543,966 (80.99%) |
| Bachelor's Degree or Higher | 240,460 (18.77%) | 323,399 (21.68%) | 434,574 (26.25%) | 530,196 (27.81%) |

Housing Tenure - Miami-dade



Language Trends - Miami-dade

Age 5 and Over

| Description | 1990 | 2000 | 2010 (ACS) | 2017 (ACS) |
|---------------------------------------|---------------------|---------------------|---------------------|---------------------|
| Speaks English Well | 221,943 (12.34%) | 285,783 (13.55%) | 302,397 (13.18%) | 333,659 (13.10%) |
| Speaks English Not Well | NA (NA) | 261,782 (12.42%) | 294,777 (12.85%) | 317,308 (12.46%) |
| Speaks English Not at All | NA (NA) | 184,249 (8.74%) | 217,650 (9.49%) | 241,775 (9.49%) |
| Speaks English Not Well or Not at All | 341,005 (18.96%) | 446,031 (21.15%) | 512,427 (22.34%) | 559,083 (21.96%) |

Housing Trends - Miami-dade

| Description | 1990 | 2000 | 2010 (ACS) | 2017 (ACS) |
|-------------------------------------|---------------------|---------------------|--------------------|--------------------|
| Total | 771,288 | 852,278 | 980,580 | 1,008,908 |
| Units per Acre | 0.608 | 0.671 | 0.772 | 0.794 |
| Single-Family Units | 365,600 | 448,569 | 508,364 | 503,457 |
| Multi-Family Units | 301,870 | 387,550 | 457,465 | 492,080 |
| Mobile Home Units | 15,359 | 15,338 | 14,234 | 13,071 |
| Owner-Occupied Units | 375,912 | 449,333 | 480,532 | 448,011 |
| Renter-Occupied Units | 316,443 | 327,441 | 347,024 | 410,278 |
| Vacant Units | 78,933 | 75,504 | 153,024 | 150,619 |
| Median Housing Value | \$86,000 | \$113,200 | \$269,600 | \$242,800 |
| Occupied Housing Units w/No Vehicle | 110,809 (16.00%) | 111,323 (14.33%) | 91,558 (11.06%) | 92,055 (10.73%) |

County Data Sources

Demographic data reported is from the U.S. Decennial Census (1990, 2000) and the American Community Survey (ACS) 5-year estimates from 2006-2010 and 2013-2017. The data was gathered at the county level. Depending on the dataset, the data represents 100% counts (Census Summary File 1) or sample-based information (Census Summary File 3 or ACS).

About the Census Data:

Use caution when comparing the 100% count data (Decennial Census) to the sample-based data (ACS). In any given year, about one in 40 or 2.5% of U.S. households will receive the ACS questionnaire. Over any five-year period, about one in eight households will receive the questionnaire, as compared to about one in six that received the long form questionnaire for the Decennial Census 2000. (Source: <http://mcdc.missouri.edu/pub/data/acs/Readme.shtml>) The U.S. Census Bureau provides help with this process:

<https://www.census.gov/programs-surveys/acs/guidance/comparing-acs-data/2017.html>

Use caution when interpreting changes in Race and Ethnicity over time. Starting with the 2000 Decennial Census, respondents were given a new option of selecting one or more race categories. Also in 2000, the placement of the question about Hispanic origin changed, helping to increase responsiveness to the Hispanic-origin question. Because of these and other changes, the 1990 data on race and ethnicity are not directly comparable with data from later censuses. (Source: <http://www.census.gov/prod/2001pubs/c2kbr01-1.pdf>;
<http://www.census.gov/pred/www/rpts/Race%20and%20Ethnicity%20FINAL%20report.pdf>)

The "Minority" calculations are derived from Census and ACS data using both the race and ethnicity responses. On this report, "Minority" refers to individuals who list a race other than White and/or list their ethnicity as Hispanic/Latino. In other words, people who are multi-racial, any single race other than White, or Hispanic/Latino of any race are considered minorities.

Disability data is not included in the 2010 Decennial Census, or the 2006-2010 ACS. This data is available in the 2013-2017 ACS.

Because of changes made to the Census and ACS questions between 1990 and 2017, disability variables should not be compared from year to year. For example: 1) With the 1990 data the disabilities are listed as a "work disability" while this distinction is not made with 2000 or 2017 ACS data; 2) The 2017 ACS data includes the institutionalized population (e.g. persons in prisons and group homes), while this population is not included in 1990 or 2000; 3) the age groupings changed over the years.

Please take the following two concerns into account when viewing this data: 1) With the 1990 data the disabilities are listed as a "work disability" while this distinction is not made with 2000 or 2017 ACS data; 2) The 2017 ACS data includes the institutionalized population (e.g. persons in prisons and group homes), while this population is not included in 1990 or 2000.

source:

<https://www.census.gov/people/disability/methodology/acs.html>

<https://www.census.gov/population/www/cen2000/90vs00/index.html>

The category Bachelor's Degree or Higher under the heading Educational Attainment Trends is a subset of the category High School Graduate or Higher.

Metadata

- Community and Fraternal Centers https://etdmpub.florida-estat.org/metadata/gc_communitycenter.htm
- Correctional Facilities in Florida https://etdmpub.florida-estat.org/metadata/gc_correctional.htm
- Cultural Centers in Florida https://etdmpub.florida-estat.org/metadata/gc_culturecenter.htm
- Fire Department and Rescue Station Facilities in Florida https://etdmpub.florida-estat.org/metadata/gc_firestat.htm
- Local, State, and Federal Government Buildings in Florida https://etdmpub.florida-estat.org/metadata/gc_govbuild.htm
- Florida Health Care Facilities https://etdmpub.florida-estat.org/metadata/gc_health.htm
- Hospital Facilities in Florida https://etdmpub.florida-estat.org/metadata/gc_hospitals.htm
- Law Enforcement Facilities in Florida https://etdmpub.florida-estat.org/metadata/gc_lawenforce.htm
- Florida Parks and Recreational Facilities https://etdmpub.florida-estat.org/metadata/gc_parks.htm
- Religious Centers https://etdmpub.florida-estat.org/metadata/gc_religion.htm
- Florida Public and Private Schools https://etdmpub.florida-estat.org/metadata/gc_schools.htm
- Social Service Centers https://etdmpub.florida-estat.org/metadata/gc_socialservice.htm
- Assisted Rental Housing Units in Florida https://etdmpub.florida-estat.org/metadata/gc_assisted_housing.htm
- Group Care Facilities <https://etdmpub.florida-estat.org/metadata/groupcare.htm>
- Mobile Home Parks in Florida https://etdmpub.florida-estat.org/metadata/gc_mobilehomes.htm
- Migrant Camps in Florida <https://etdmpub.florida-estat.org/metadata/migrant.htm>
- Veteran Organizations and Facilities https://etdmpub.florida-estat.org/metadata/gc_veterans.htm
- Generalized Land Use - Florida DOT District 6 https://etdmpub.florida-estat.org/metadata/d6_lu_gen.htm
- Census Block Groups in Florida https://etdmpub.florida-estat.org/metadata/e2_cenacs_cci.htm
- 1990 Census Block Groups in Florida https://etdmpub.florida-estat.org/metadata/e2_cenblkgrp_1990_cci.htm
- 2000 Census Block Groups in Florida https://etdmpub.florida-estat.org/metadata/e2_cenblkgrp_2000_cci.htm
- 2010 Census Block Groups in Florida https://etdmpub.florida-estat.org/metadata/e2_cenblkgrp_2010_cci.htm