

# Sociocultural Data Report

## Three Lakes

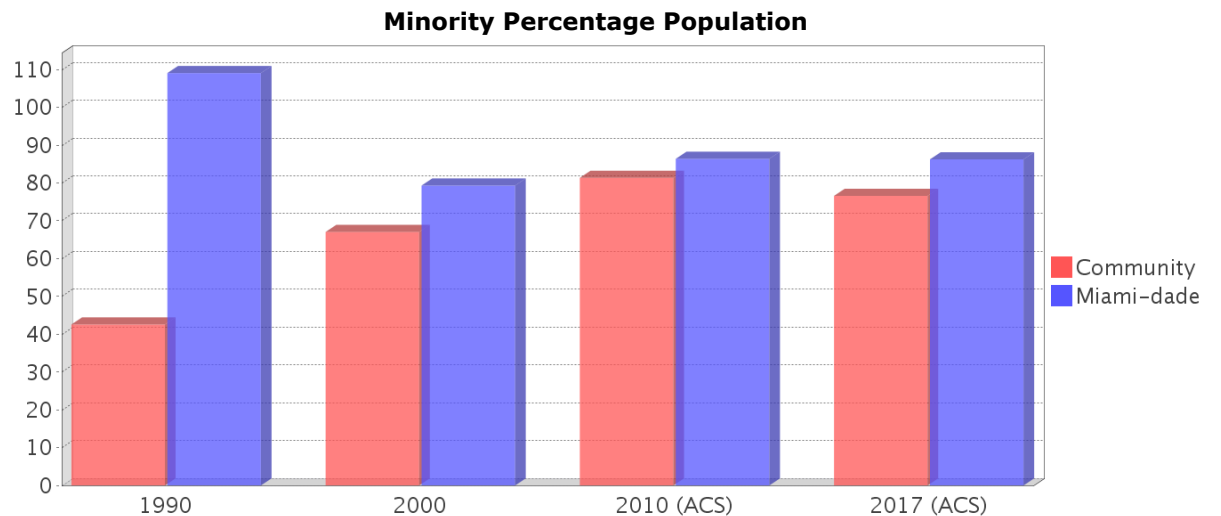
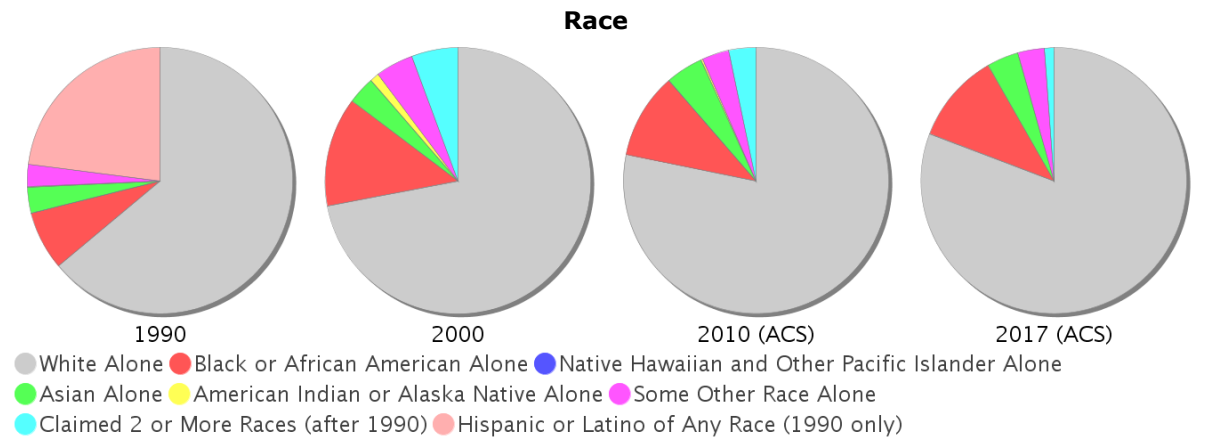
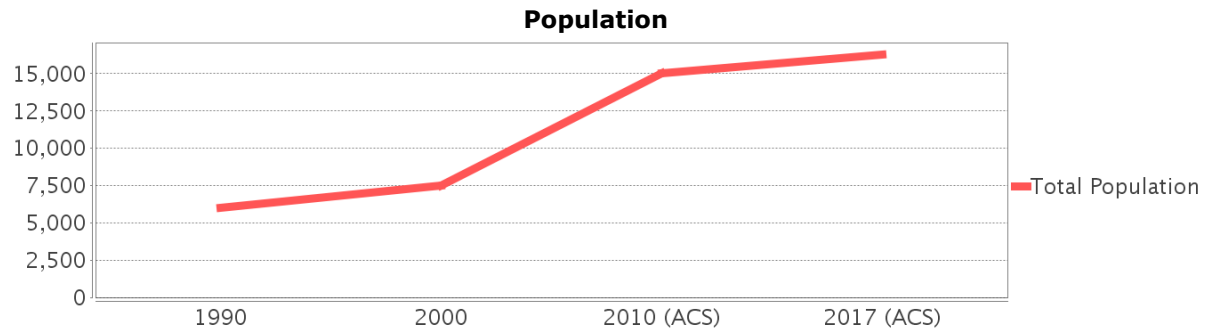
**Area:** 3.855 square miles  
**Jurisdiction(s):** Cities: NA  
 Counties: Miami-dade

## General Population Trends

Description	1990	2000	2010 (ACS)	2017 (ACS)
Total Population	5,997	7,473	15,047	16,266
Total Households	2,096	2,654	4,961	4,900
Average Persons per Acre	8.21	8.29	13.63	14.03
Average Persons per Household	2.90	3.22	3.00	3.14
Average Persons per Family	3.33	3.56	3.12	3.70
Males	2,909	3,462	7,114	7,393
Females	3,087	4,011	7,933	8,873

## Race and Ethnicity Trends

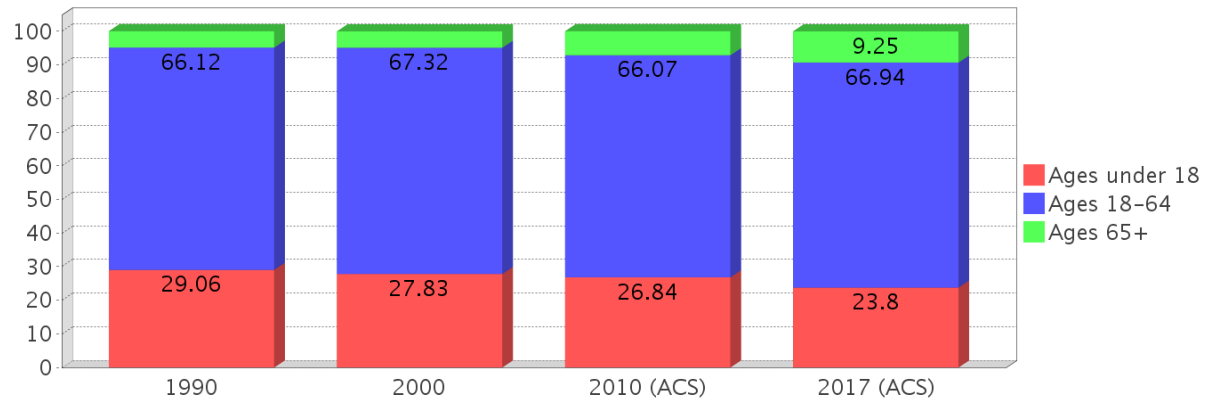
Description	1990	2000	2010 (ACS)	2017 (ACS)
White Alone	4,977 (82.99%)	5,379 (71.98%)	11,756 (78.13%)	13,139 (80.78%)
Black or African American Alone	556 (9.27%)	991 (13.26%)	1,571 (10.44%)	1,778 (10.93%)
Native Hawaiian and Other Pacific Islander Alone	4 (0.07%)	0 (0.00%)	7 (0.05%)	0 (0.00%)
Asian Alone	246 (4.10%)	256 (3.43%)	694 (4.61%)	639 (3.93%)
American Indian or Alaska Native Alone	2 (0.03%)	79 (1.06%)	23 (0.15%)	0 (0.00%)
Some Other Race Alone	211 (3.52%)	346 (4.63%)	504 (3.35%)	528 (3.25%)
Claimed 2 or More Races	NA (NA)	422 (5.65%)	492 (3.27%)	182 (1.12%)
Hispanic or Latino of Any Race	1,792 (29.88%)	3,496 (46.78%)	9,843 (65.42%)	10,033 (61.68%)
Not Hispanic or Latino	4,205 (70.12%)	3,977 (53.22%)	5,204 (34.58%)	6,233 (38.32%)
Minority	2,553 (42.57%)	5,011 (67.05%)	12,242 (81.36%)	12,458 (76.59%)



### Age Trends

Description	1990	2000	2010 (ACS)	2017 (ACS)
Under Age 5	9.54%	8.42%	7.99%	7.95%
Ages 5-17	19.53%	19.42%	18.84%	15.86%
Ages 18-21	4.50%	4.04%	5.48%	4.73%
Ages 22-29	15.41%	16.08%	11.28%	11.52%
Ages 30-39	23.11%	19.93%	18.09%	15.63%
Ages 40-49	14.79%	17.11%	16.56%	16.67%
Ages 50-64	8.30%	10.16%	14.66%	18.38%
Age 65 and Over	4.84%	4.84%	7.09%	9.25%
-Ages 65-74	3.30%	3.00%	4.31%	5.34%
-Ages 75-84	1.27%	1.61%	2.21%	2.83%
-Age 85 and Over	0.27%	0.24%	0.58%	1.08%
Median Age	NA	34	36	38

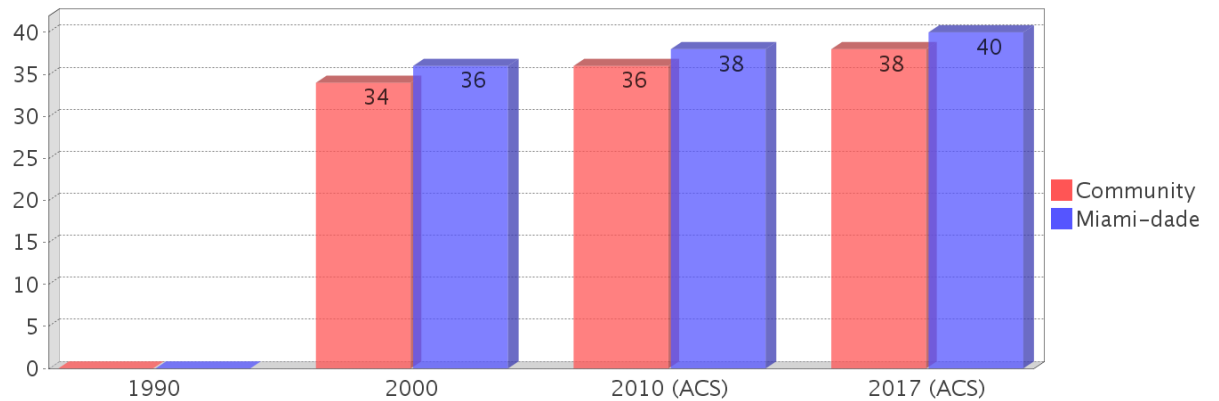
### Percentage Population by Age Group



### Income Trends

Description	1990	2000	2010 (ACS)	2017 (ACS)
Median Household Income	\$44,556	\$57,552	\$68,212	\$64,197
Median Family Income	\$45,714	\$58,393	\$70,385	\$70,583
Population below Poverty Level	5.17%	7.52%	6.62%	9.84%
Households below Poverty Level	4.48%	8.25%	8.87%	10.27%
Households with Public Assistance Income	3.29%	1.73%	2.66%	1.69%

### Median Age Comparison

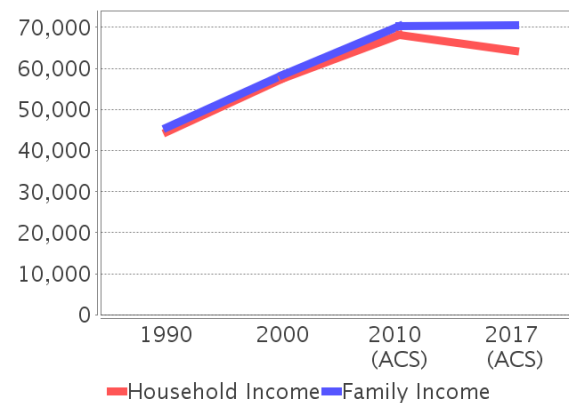


### Disability Trends

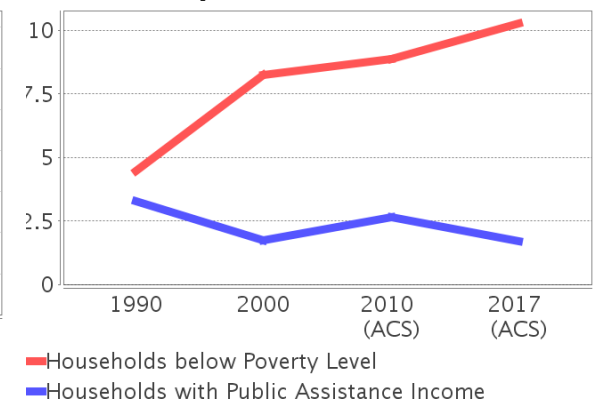
See the Data Sources section below for an explanation about the differences in disability data among the various years.

Description	1990	2000	2010 (ACS)	2017 (ACS)
Population 16 To 64 Years with a disability	181 (4.06%)	807 (11.95%)	(NA)	(NA)
Population 20 To 64 Years with a disability	(NA)	(NA)	(NA)	296 (2.82%)

### Income Trends



### Poverty and Public Assistance



## Educational Attainment Trends

Age 25 and Over

Description	1990	2000	2010 (ACS)	2017 (ACS)
Less than 9th Grade	110 (2.81%)	164 (3.46%)	338 (3.73%)	397 (3.66%)
9th to 12th Grade, No Diploma	254 (6.50%)	312 (6.59%)	335 (3.70%)	517 (4.76%)
High School Graduate or Higher	3,545 (90.69%)	4,261 (89.95%)	8,390 (92.57%)	9,941 (91.58%)
Bachelor's Degree or Higher	1,298 (33.21%)	1,492 (31.50%)	3,898 (43.01%)	4,226 (38.93%)

## Language Trends

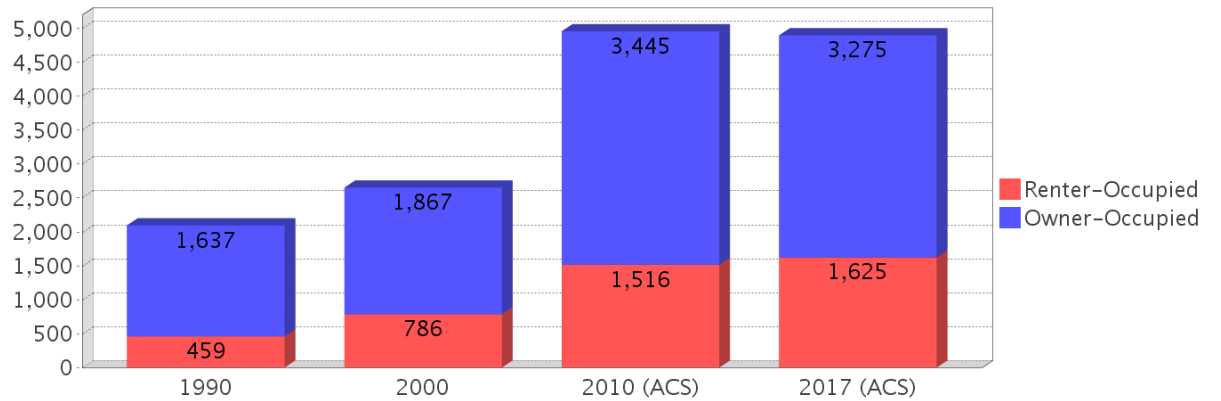
Age 5 and Over

Description	1990	2000	2010 (ACS)	2017 (ACS)
Speaks English Well	412 (7.45%)	740 (10.81%)	1,385 (10.35%)	1,905 (12.72%)
Speaks English Not Well	NA (NA)	484 (7.07%)	1,324 (9.89%)	1,072 (7.16%)
Speaks English Not at All	NA (NA)	174 (2.54%)	344 (2.57%)	392 (2.62%)
Speaks English Not Well or Not at All	216 (3.91%)	658 (9.61%)	1,668 (12.47%)	1,464 (9.78%)

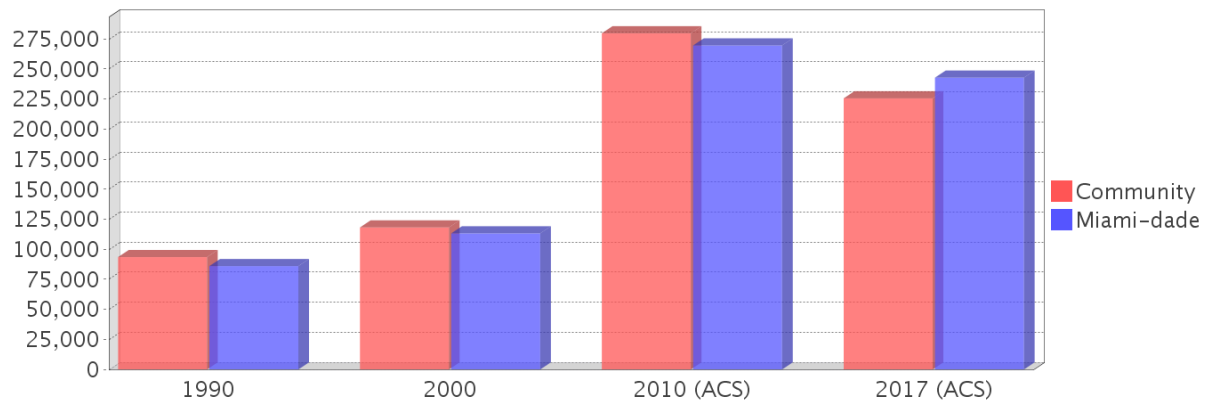
## Housing Trends

Description	1990	2000	2010 (ACS)	2017 (ACS)
Total	2,199	2,803	5,342	5,214
Units per Acre	1.96	2.98	4.35	4.24
Single-Family Units	1,944	2,233	4,330	4,494
Multi-Family Units	124	557	780	720
Mobile Home Units	0	13	10	0
Owner-Occupied Units	1,637	1,867	3,445	3,275
Renter-Occupied Units	459	786	1,516	1,625
Vacant Units	103	150	381	314
Median Housing Value	\$93,450	\$118,100	\$279,700	\$225,600
Occupied Housing Units w/No Vehicle	32 (1.53%)	92 (3.47%)	54 (1.09%)	107 (2.18%)

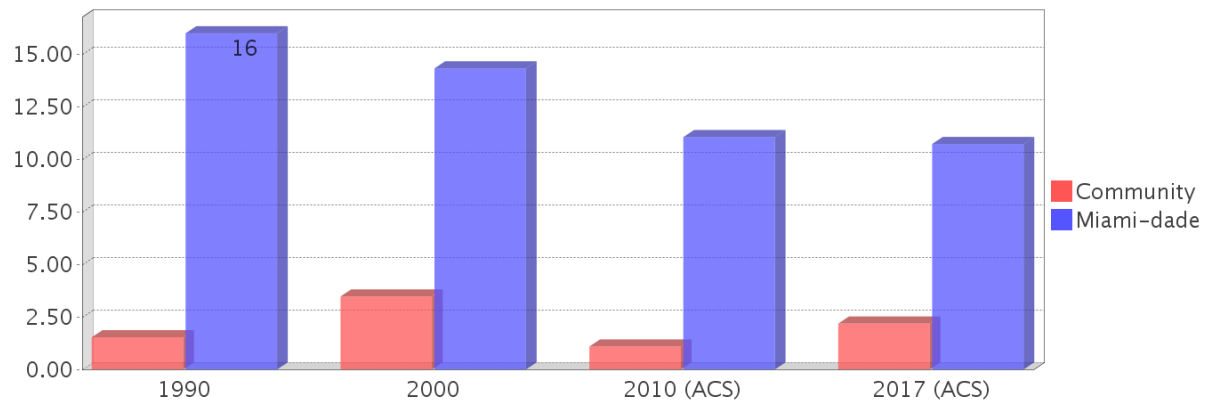
## Housing Tenure



## Median Housing Value Comparison

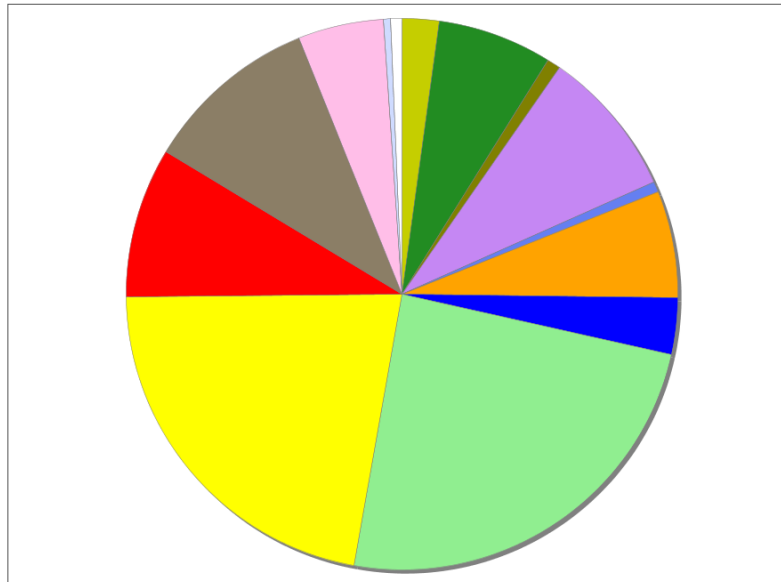


## Occupied Units With No Vehicles Available



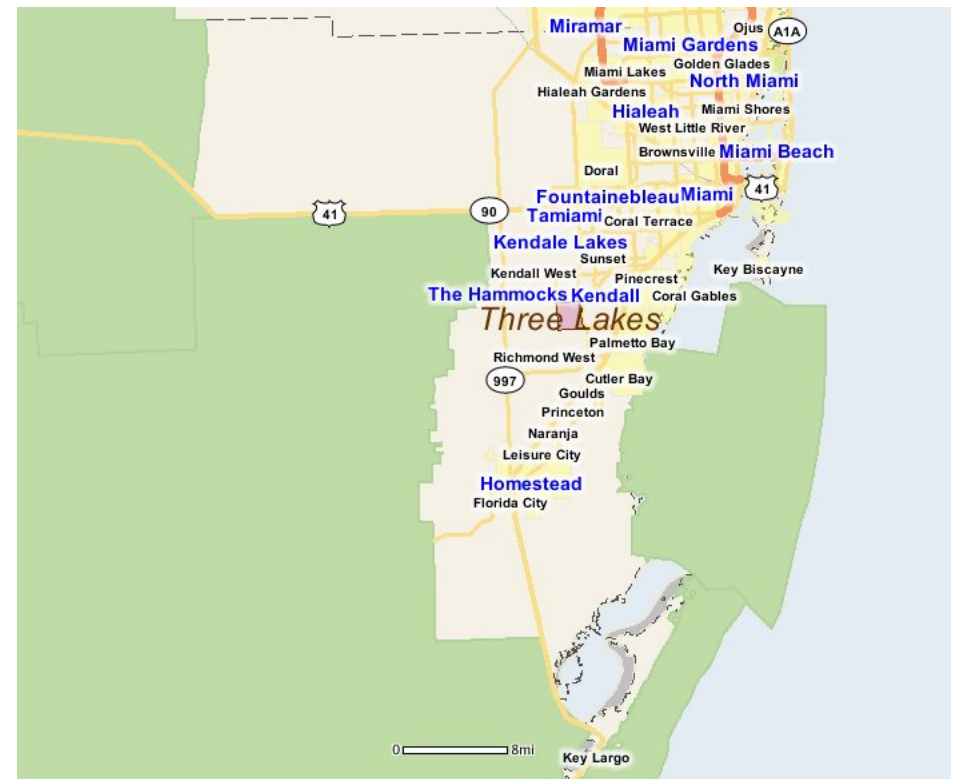
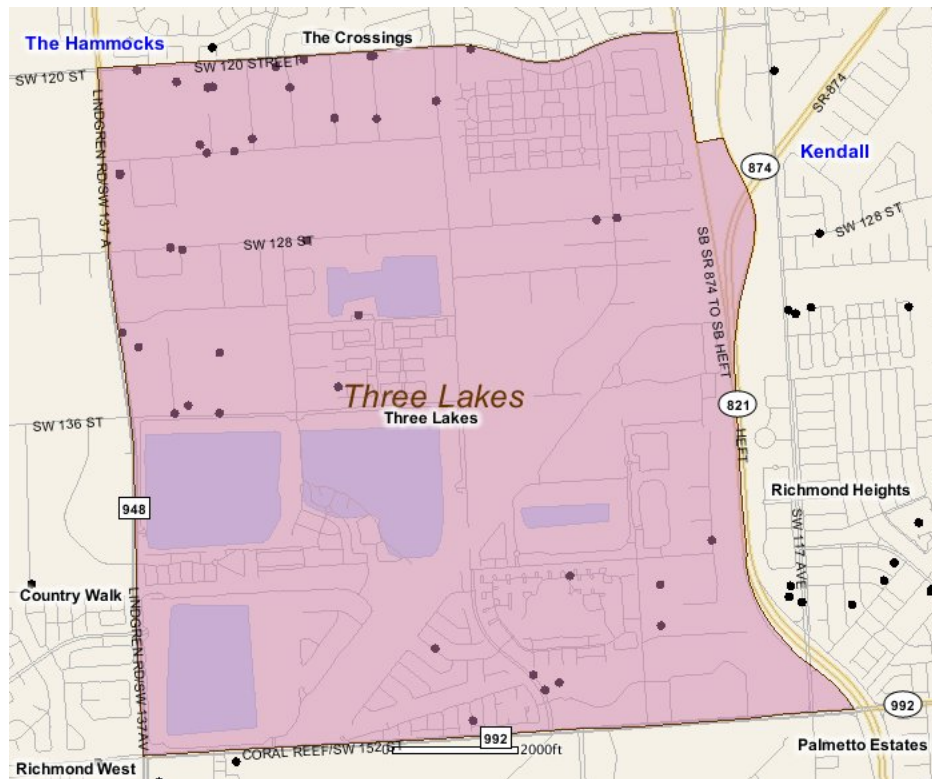
## Existing Land Use

Land Use Type	Acres	Percentage
Acreage Not Zoned For Agriculture	47	1.91%
Agricultural	146	5.92%
Centrally Assessed	17	0.69%
Industrial	188	7.62%
Institutional	13	0.53%
Mining	0	0.00%
Other	136	5.51%
Public/Semi-Public	72	2.92%
Recreation	527	21.36%
Residential	479	19.42%
Retail/Office	191	7.74%
Row	0	0.00%
Vacant Residential	223	9.04%
Vacant Nonresidential	109	4.42%
Water	9	0.36%
Parcels With No Values	14	0.57%



- Acreage Not Zoned For Agriculture
- Agricultural
- Centrally Assessed
- Industrial
- Institutional
- Mining
- Other
- Public/Semi-Public
- Recreation
- Residential
- Retail/Office
- Row
- Vacant Residential
- Vacant Nonresidential
- Water
- Parcels With No Values

## Location Maps



## Community Facilities

The community facilities information below is useful in a variety of ways for environmental evaluations. These community resources should be evaluated for potential sociocultural effects, such as accessibility and relocation potential. The facility types may indicate the types of population groups present in the project study area. Facility staff and leaders can be sources of community information such as who uses the facility and how it is used. Additionally, community facilities are potential public meeting venues.

### Florida Parks and Recreational Facilities (Points)

Facility Name	Address	Zip Code
DEERWOOD BONITA LAKES PARK	14445 SW 122ND AVE	33186
THREE LAKES PARK	13375 SW 136TH ST	33186

### Government Building

Facility Name	Address	Zip Code
FLORIDA DEPARTMENT OF HIGHWAY SAFETY AND MOTOR VEHICLES SERVICE CENTER	14653 SW 122 AVE	33186

### Healthcare Facilities (Geocoded)

Facility Name	Address	Zip Code
LOURDES NUNEZ, MD, PA	12002 SW 128TH COURT, SUITE 210	33186
BUENA VISTA MEDICAL SERVICES INC	12002 SW 128 COURT, SUITE 203	33186
BAPTIST PRIMARY CARE AT KENDALL BREEZE	12314 SW 127 AVENUE	33186
SOUTH KENDALL DERMATOLOGY	12600 SW 120TH STREET, SUITE 113	33186
KAREN R KADE MD.	12600 SW 120 STREET, SUITE 107	33186
VITAL LIFE DIALYSIS CENTER, LLC	13501 SW 136 STREET, SUITE 210	33186
NEW ENGLAND PHYSICIANS	13335 SW 124 STREET, SUITE 105	33186
BMA WEST KENDALL	12000 SW 131 AVENUE	33186
MILTON A. JIMENEZ, M.D., P.A.	12002 SW 128 COURT, SUITE 204	33186
IVAN ESPAILLAT MD. PA	12002 SW 128 COURT, SUITE 204	33186
FELIX E. GUZMAN, M.D. LLC	12600 SW 120 STREET 105	33186
MANANTIAL DE VIDA, INC	13255 SW 137 AVENUE, SUITE 100	33186
WEST KENDALL REHAB	13501 SW 128 STREET, SUITE 116	33186
DR. JARRETT'S WELLNESS CENTER	12955 SW 132 STREET, BUILDING 3B STREET, SUITE 104	33186
PEDIATRIC ASSOCIATES OF SOUTH FLORIDA	12001 SW 128TH COURT, SUITE 201	33186
FELIX E. GUZMAN MD PA	12600 SW 120 STREET, SUITE 105	33186
COMFORT HEALTH GROUP	12600 SW 120 STREET, SUITE 101	33186
THE WELLNESS CENTER OF LONDON SQUARE	13550 SW 120 STREET, SUITE 518	33186
MIAMI CHILDREN'S HOSPITAL WEST KENDALL OUTPATIENT	13400 SW 120 STREET, SUITE 100, 200	33186
MEZEY & KRAINSON M.D. P.A.	12600 SW 120 STREET, SUITE 117	33186
REY MEDICAL & WELLNESS CENTERS LLC	12600 SW 120 STREET, SUITE 101	33186
GONZALO MOSQUEDA, M.D., L.L.C.	13501 SW 128 STREET, SUITE 106	33186
MIAMI MEDICAL ESTHETICS	12002 SW 128 COURT, SUITE 210	33186
LEVIN M.D. P.A. SANFORD	12485 SW 137 AVENUE, SUITE 111	33186
VALLES & ASSOCIATES REHAB. SERVICES INC.	12600 SW 120 STREET, SUITE 109	33186
ROMEO E. ROJAS, M.D., P.A.	12002 SW 128 COURT, SUITE 204	33186

### Public and Private Schools (Points)

Facility Name	Address	Zip Code
ATLANTIC CHRISTIAN ACADEMY	13130 S.W. 128 ST #8	33186
JACK D. GORDON PRIMARY LEARNING CENTER	15001 SW 127 AVE	33186
BRIDGEPREP ACADEMY OF VILLAGE GREEN	13300 SW 120TH ST	33186
MIAMI VIRTUAL SCHOOL	13011 SW 135TH STREET	33186
KIDS PARADISE LEARNING CENTER	13455 SW 136 ST	33186

### Religious Centers (Points)

Facility Name	Address	Zip Code
CALVARY CHAPEL OF KENDALL	12350 SOUTHWEST 132ND COURT SUITE 201	33186
BRAZILIAN PRESBYTERIAN CHURCH	12126 SW 131ST AVENUE	33186
MIAMI VINEYARD COMMUNITY CHURCH	14260 SOUTHWEST 119TH AVENUE	33186
PUREHEART CHRISTIAN FELLOWSHIP	12236 SW 128TH STREET	33186
TRUE VINE FELLOWSHIP	13016 SOUTHWEST 120TH STREET	33186
SPIRIT & LIFE OUTREACH CENTER	12301 SW 128TH COURT	33186
CROSSROADS BAPTIST MINISTRIES	13297 SW 124TH STREET	33186
INTERNATIONAL OUTREACH CENTER	12811 SW 134TH COURT	33186
WORD OF FAITH MINISTRIES	12283 SW 129TH COURT	33186
KENDALL BIBLE BAPTIST CHURCH	13255 SOUTHWEST 137TH AVENUE SUITE 200	33186
CORNERSTONE CHRISTIAN CHURCH	12196 SW 128TH ST	33186

### Social Services (Geocoded)

Facility Name	Address	Zip Code
AMERICORPS STUDENT TURNAROUND PROJECT	12485 SW 137TH AVE	33186
AMERICORPS MIAMI READS	12485 SW 137TH AVE	33186
MIAMI UNIT 23K	13335 SW 124TH ST.	33186

### US Census Places

Facility Name
Country Walk
The Crossings
The Hammocks
Kendall
Richmond Heights
Three Lakes

---

## Block Groups

The following Census Block Groups were used to calculate demographics for this report.

### 1990 Census Block Groups

120250101273, 120250101283, 120250101255, 120250084089, 120250101289

### 2000 Census Block Groups

120860101701, 120860101692, 120860101702, 120860101753, 120860101141, 120860101781, 120860101754, 120860101771, 120860101772

### 2010 Census Block Groups

120860193002, 120860195002, 120860193004, 120860195001, 120860189004, 120860194001, 120860202001, 120860189003, 120860192001, 120860193003, 120860193001, 120860192002, 120860194002, 120860188002

### 2017 Census Block Groups

120860195004, 120860189003, 120860192001, 120860192002, 120860195001, 120860193002, 120860193003, 120860193004, 120860194002, 120860188002, 120860189004, 120860202001, 120860194001, 120860193001

---

## Data Sources

### Area

The geographic area of the community based on a user-specified community boundary or area of interest (AOI) boundary.

### Jurisdiction

Jurisdiction(s) includes local government boundaries that intersect the community or AOI boundary.

### Demographic Data

Demographic data reported under the headings General Population Trends, Race and Ethnicity Trends, Age Trends, Income Trends, Educational Attainment Trends, Language Trends, and Housing Trends is from the U.S. Decennial Census (1990, 2000) and the American Community Survey (ACS) 5-year estimates from 2006-2010 and 2013-2017. The data was gathered at the block group level for user-specified community boundaries and AOIs, and at the county level for counties. Depending on the dataset, the data represents 100% counts (Census Summary File 1) or sample-based information (Census Summary File 3 or ACS).

### About the Census Data:

User-specified community boundaries and AOIs do not always correspond precisely to block group boundaries. In these instances, adjustment of the geographic area and data for affected block groups is required to estimate the actual population. To improve the accuracy of such estimates in the SDR report, the census block group data was adjusted to exclude all census blocks with a population of two or fewer. These areas were eliminated from the corresponding years' block groups. Next, the portion of the block group that lies outside of the community or AOI boundary was removed. The demographics within each block group were then recalculated, assuming an equal area distribution of the population. Note that there may be areas where there is no population.

Use caution when comparing the 100% count data (Decennial Census) to the sample-based data (ACS). In any given year, about one in 40 or 2.5% of U.S. households will receive the ACS questionnaire. Over any five-year period, about one in eight households will receive the questionnaire, as compared to about one in six that received the long form

questionnaire for the Decennial Census 2000. (Source: <http://mcdc.missouri.edu/pub/data/acs/Readme.shtml>) The U.S. Census Bureau provides help with this process:

<https://www.census.gov/programs-surveys/acs/guidance/comparing-acs-data/2017.html>

Use caution when interpreting changes in Race and Ethnicity over time. Starting with the 2000 Decennial Census, respondents were given a new option of selecting one or more race categories. Also in 2000, the placement of the question about Hispanic origin changed, helping to increase responsiveness to the Hispanic-origin question. Because of these and other changes, the 1990 data on race and ethnicity are not directly comparable with data from later censuses. (Source: <http://www.census.gov/prod/2001pubs/c2kbr01-1.pdf>; <http://www.census.gov/pred/www/rpts/Race%20and%20Ethnicity%20FINAL%20report.pdf>)

The "Minority" calculations are derived from Census and ACS data using both the race and ethnicity responses. On this report, "Minority" refers to individuals who list a race other than White and/or list their ethnicity as Hispanic/Latino. In other words, people who are multi-racial, any single race other than White, or Hispanic/Latino of any race are considered minorities.

Disability data is not included in the 2010 Decennial Census, or the 2006-2010 ACS. This data is available in the 2013-2017 ACS.

Because of changes made to the Census and ACS questions between 1990 and 2017, disability variables should not be compared from year to year. For example: 1) With the 1990 data the disabilities are listed as a "work disability" while this distinction is not made with 2000 or 2017 ACS data; 2) The 2017 ACS data includes the institutionalized population (e.g. persons in prisons and group homes), while this population is not included in 1990 or 2000; 3) the age groupings changed over the years.

Please take the following two concerns into account when viewing this data: 1) With the 1990 data the disabilities are listed as a "work disability" while this distinction is not made with 2000 or 2017 ACS data; 2) The 2017 ACS data includes the institutionalized population (e.g. persons in prisons and group homes), while this population is not included in 1990 or 2000.

The category Bachelor's Degree or Higher under the heading Educational Attainment Trends is a subset of the category High School Graduate or Higher.

Income of households. This includes the income of the householder and all other individuals 15 years old and over in the household, whether they are related to the householder or not. Because many households consist of only one person, average household income is usually less than average family income.

Income of families. In compiling statistics on family income, the incomes of all members 15 years old and over related to the householder are summed and treated as a single amount.

Age Trends median age for 1990 is not available.

### **Land Use Data**

The Land Use information Indicates acreages and percentages for the generalized land use types used to group parcel-specific, existing land use assigned by the county property appraiser office according to the Florida Department of Revenue land use codes.

### **Community Facilities Data**

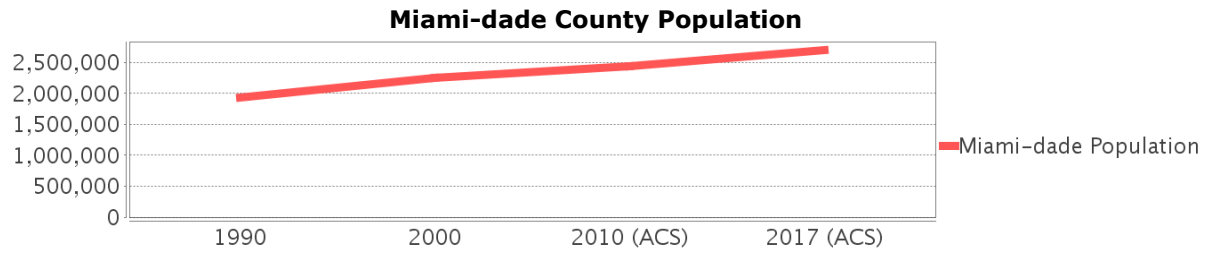
- Assisted Rental Housing Units - Identifies multifamily rental developments that receive funding assistance under federal, state, and local government programs to offer affordable housing as reported by the Shimberg Center for Housing Studies, University of Florida.
- Mobile Home Parks - Identifies approved or acknowledged mobile home parks reported by the Florida Department of Business and Professional Regulation and Florida Department of Health.

- Migrant Camps - Identifies migrant labor camp facilities inspected by the Florida Department of Health.
- Group Care Facilities - Identifies group care facilities inspected by the Florida Department of Health.
- Community Center and Fraternal Association Facilities - Identifies facilities reported by multiple sources.
- Law Enforcement Correctional Facilities - Identifies facilities reported by multiple sources.
- Cultural Centers - Identifies cultural centers including organizations, buildings, or complexes that promote culture and arts (e.g., aquariums and zoological facilities; arboreta and botanical gardens; dinner theaters; drive-ins; historical places and services; libraries; motion picture theaters; museums and art galleries; performing arts centers; performing arts theaters; planetariums; studios and art galleries; and theater producers stage facilities) reported by multiple sources.
- Fire Department and Rescue Station Facilities - Identifies facilities reported by multiple sources.
- Government Buildings - Identifies local, state, and federal government buildings reported by multiple sources.
- Health Care Facilities - Identifies health care facilities including abortion clinics, dialysis clinics, medical doctors, nursing homes, osteopaths, state laboratories/clinics, and surgicenters/walk-in clinics reported by the Florida Department of Health.
- Hospital Facilities - Identifies hospital facilities reported by multiple sources.
- Law Enforcement Facilities - Identifies law enforcement facilities reported by multiple sources.
- Parks and Recreational Facilities - Identifies parks and recreational facilities reported by multiple sources.
- Religious Center Facilities - Identifies religious centers including churches, temples, synagogues, mosques, chapels, centers, and other types of religious facilities reported by multiple sources.
- Private and Public Schools - Identifies private and public schools reported by multiple sources.
- Social Service Centers - Identifies social service centers reported by multiple sources.
- Veteran Organizations and Facilities

# Miami-dade County Demographic Profile

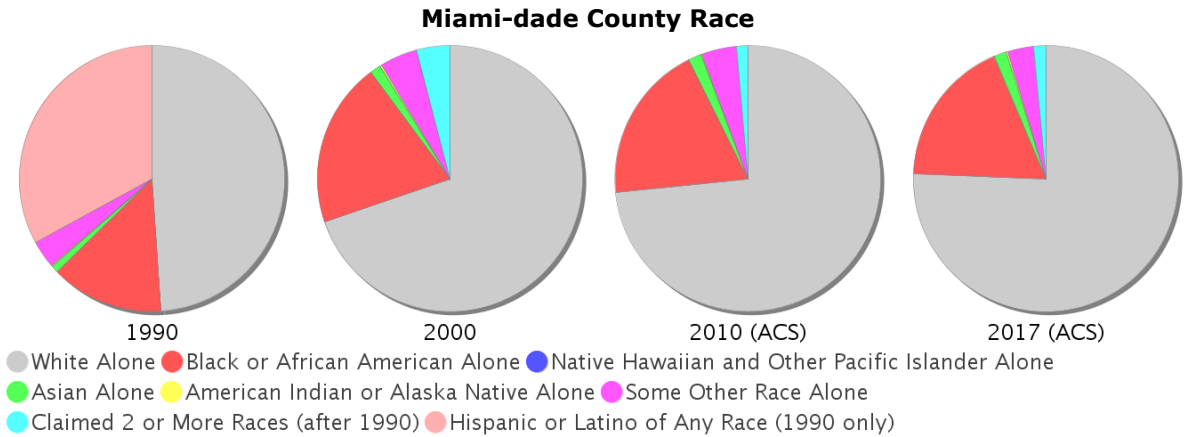
## General Population Trends - Miami-dade

Description	1990	2000	2010 (ACS)	2017 (ACS)
Total Population	1,937,094	2,253,362	2,445,374	2,702,602
Total Households	692,355	776,774	827,556	858,289
Average Persons per Acre	1.528	1.774	1.925	2.128
Average Persons per Household	2.798	2.84	3.00	3.09
Average Persons per Family	3.413	3.488	3.591	3.926
Males	928,411	1,086,558	1,182,784	1,311,997
Females	1,008,683	1,166,804	1,262,590	1,390,605



## Race and Ethnicity Trends - Miami-dade

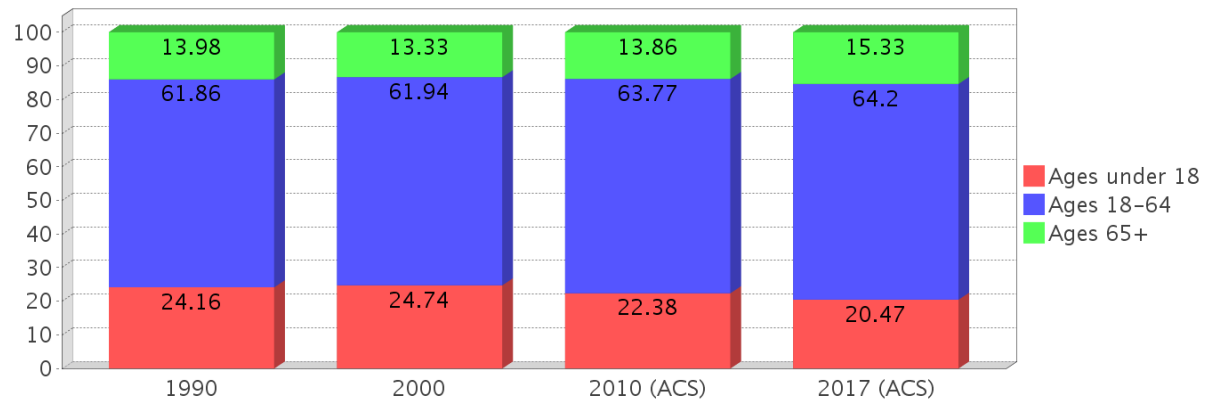
Description	1990	2000	2010 (ACS)	2017 (ACS)
White Alone	1,413,015 (72.95%)	1,570,990 (69.72%)	1,794,730 (73.39%)	2,043,272 (75.60%)
Black or African American Alone	397,993 (20.55%)	452,333 (20.07%)	470,326 (19.23%)	485,602 (17.97%)
Native Hawaiian and Other Pacific Islander Alone	(NA)	605 (0.03%)	649 (0.03%)	724 (0.03%)
Asian Alone	25,869 (1.34%)	30,692 (1.36%)	38,813 (1.59%)	42,770 (1.58%)
American Indian or Alaska Native Alone	3,066 (0.16%)	4,841 (0.21%)	3,572 (0.15%)	4,040 (0.15%)
Some Other Race Alone	96,713 (4.99%)	102,436 (4.55%)	102,938 (4.21%)	84,892 (3.14%)
Claimed 2 or More Races	(NA)	91,465 (4.06%)	34,346 (1.40%)	41,302 (1.53%)
Hispanic or Latino of Any Race	953,407 (49.22%)	1,291,681 (57.32%)	1,565,410 (64.02%)	1,823,038 (67.45%)
Not Hispanic or Latino	983,687 (50.78%)	961,681 (42.68%)	879,964 (35.98%)	879,564 (32.55%)
Minority	2,112,884 (109.07%)	1,787,468 (79.32%)	2,112,884 (86.40%)	2,331,369 (86.26%)



### Age Trends - Miami-dade

Description	1990	2000	2010 (ACS)	2017 (ACS)
Under Age 5	7.21%	6.43%	6.20%	5.78%
Ages 5-17	16.95%	18.31%	16.18%	14.69%
Ages 18-21	5.60%	5.24%	5.83%	5.06%
Ages 22-29	13.10%	10.97%	10.98%	11.21%
Ages 30-39	16.06%	16.33%	14.14%	13.89%
Ages 40-49	12.47%	14.49%	15.67%	14.68%
Ages 50-64	14.63%	14.90%	17.15%	19.37%
Age 65 and Over	13.98%	13.33%	13.86%	15.33%
-Ages 65-74	7.54%	7.23%	7.34%	8.19%
-Ages 75-84	4.88%	4.41%	4.71%	4.95%
-Age 85 and Over	1.55%	1.69%	1.81%	2.20%
Median Age	NA	36	38	40

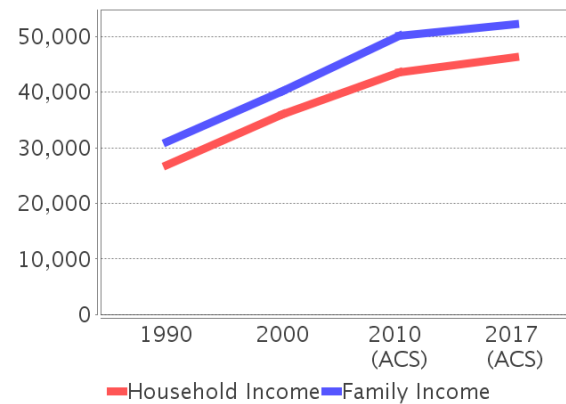
Percentage Population by Age Group - Miami-dade



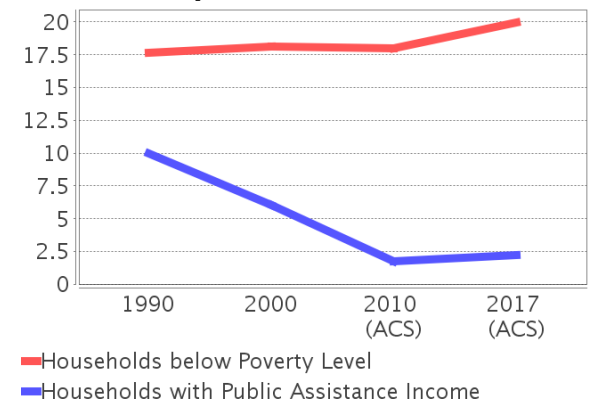
### Income Trends - Miami-dade

Description	1990	2000	2010 (ACS)	2017 (ACS)
Median Household Income	\$26,909	\$35,966	\$43,605	\$46,338
Median Family Income	\$31,113	\$40,260	\$50,065	\$52,235
Population below Poverty Level	17.94%	17.97%	17.18%	18.98%
Households below Poverty Level	17.62%	18.10%	18.02%	19.95%
Households with Public Assistance Income	9.96%	6.01%	1.74%	2.24%

Income Trends



Poverty and Public Assistance



### Disability Trends - Miami-dade

See the Data Sources section below for an explanation about the differences in disability data among the various years.

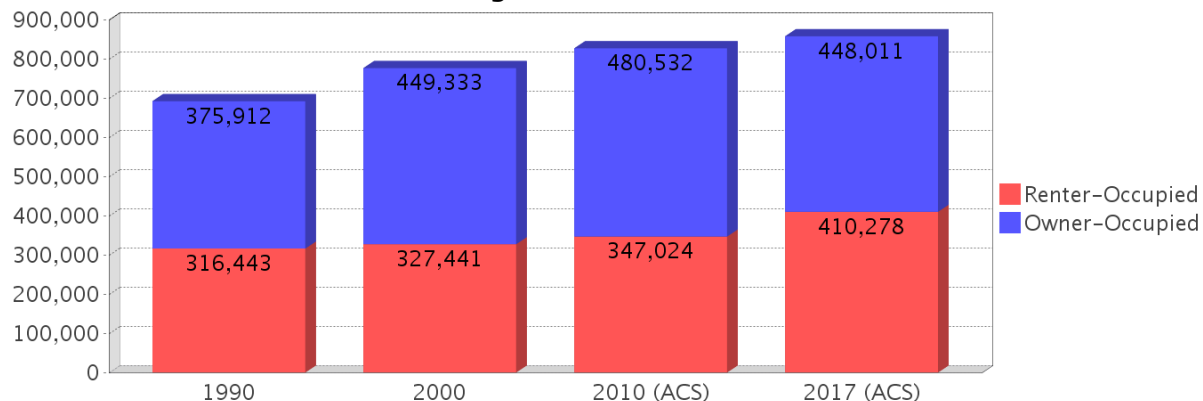
Description	1990	2000	2010 (ACS)	2017 (ACS)
Population 16 To 64 Years with a disability	78,949 (5.28%)	324,062 (15.60%)	NA (NA)	NA (NA)
Population 20 To 64 Years with a disability	NA (NA)	NA (NA)	NA (NA)	114,936 (6.96%)

## Educational Attainment Trends - Miami-dade

Age 25 and Over

Description	1990	2000	2010 (ACS)	2017 (ACS)
Less than 9th Grade	228,426 (17.83%)	219,066 (14.68%)	202,413 (12.23%)	194,934 (10.23%)
9th to 12th Grade, No Diploma	219,856 (17.16%)	260,287 (17.45%)	178,335 (10.77%)	167,399 (8.78%)
High School Graduate or Higher	833,013 (65.01%)	1,012,436 (67.87%)	1,274,809 (77.00%)	1,543,966 (80.99%)
Bachelor's Degree or Higher	240,460 (18.77%)	323,399 (21.68%)	434,574 (26.25%)	530,196 (27.81%)

## Housing Tenure - Miami-dade



## Language Trends - Miami-dade

Age 5 and Over

Description	1990	2000	2010 (ACS)	2017 (ACS)
Speaks English Well	221,943 (12.34%)	285,783 (13.55%)	302,397 (13.18%)	333,659 (13.10%)
Speaks English Not Well	NA (NA)	261,782 (12.42%)	294,777 (12.85%)	317,308 (12.46%)
Speaks English Not at All	NA (NA)	184,249 (8.74%)	217,650 (9.49%)	241,775 (9.49%)
Speaks English Not Well or Not at All	341,005 (18.96%)	446,031 (21.15%)	512,427 (22.34%)	559,083 (21.96%)

## Housing Trends - Miami-dade

Description	1990	2000	2010 (ACS)	2017 (ACS)
Total	771,288	852,278	980,580	1,008,908
Units per Acre	0.608	0.671	0.772	0.794
Single-Family Units	365,600	448,569	508,364	503,457
Multi-Family Units	301,870	387,550	457,465	492,080
Mobile Home Units	15,359	15,338	14,234	13,071
Owner-Occupied Units	375,912	449,333	480,532	448,011
Renter-Occupied Units	316,443	327,441	347,024	410,278
Vacant Units	78,933	75,504	153,024	150,619
Median Housing Value	\$86,000	\$113,200	\$269,600	\$242,800
Occupied Housing Units w/No Vehicle	110,809 (16.00%)	111,323 (14.33%)	91,558 (11.06%)	92,055 (10.73%)

---

## County Data Sources

Demographic data reported is from the U.S. Decennial Census (1990, 2000) and the American Community Survey (ACS) 5-year estimates from 2006-2010 and 2013-2017. The data was gathered at the county level. Depending on the dataset, the data represents 100% counts (Census Summary File 1) or sample-based information (Census Summary File 3 or ACS).

### About the Census Data:

Use caution when comparing the 100% count data (Decennial Census) to the sample-based data (ACS). In any given year, about one in 40 or 2.5% of U.S. households will receive the ACS questionnaire. Over any five-year period, about one in eight households will receive the questionnaire, as compared to about one in six that received the long form questionnaire for the Decennial Census 2000. (Source: <http://mcdc.missouri.edu/pub/data/acs/Readme.shtml>) The U.S. Census Bureau provides help with this process:

<https://www.census.gov/programs-surveys/acs/guidance/comparing-acs-data/2017.html>

Use caution when interpreting changes in Race and Ethnicity over time. Starting with the 2000 Decennial Census, respondents were given a new option of selecting one or more race categories. Also in 2000, the placement of the question about Hispanic origin changed, helping to increase responsiveness to the Hispanic-origin question. Because of these and other changes, the 1990 data on race and ethnicity are not directly comparable with data from later censuses. (Source: <http://www.census.gov/prod/2001pubs/c2kbr01-1.pdf>; <http://www.census.gov/pred/www/rpts/Race%20and%20Ethnicity%20FINAL%20report.pdf>)

The "Minority" calculations are derived from Census and ACS data using both the race and ethnicity responses. On this report, "Minority" refers to individuals who list a race other than White and/or list their ethnicity as Hispanic/Latino. In other words, people who are multi-racial, any single race other than White, or Hispanic/Latino of any race are considered minorities.

Disability data is not included in the 2010 Decennial Census, or the 2006-2010 ACS. This data is available in the 2013-2017 ACS.

Because of changes made to the Census and ACS questions between 1990 and 2017, disability variables should not be compared from year to year. For example: 1) With the 1990 data the disabilities are listed as a "work disability" while this distinction is not made with 2000 or 2017 ACS data; 2) The 2017 ACS data includes the institutionalized population (e.g. persons in prisons and group homes), while this population is not included in 1990 or 2000; 3) the age groupings changed over the years.

Please take the following two concerns into account when viewing this data: 1) With the 1990 data the disabilities are listed as a "work disability" while this distinction is not made with 2000 or 2017 ACS data; 2) The 2017 ACS data includes the institutionalized population (e.g. persons in prisons and group homes), while this population is not included in 1990 or 2000.

source:

<https://www.census.gov/people/disability/methodology/acs.html>

<https://www.census.gov/population/www/cen2000/90vs00/index.html>

The category Bachelor's Degree or Higher under the heading Educational Attainment Trends is a subset of the category High School Graduate or Higher.

---

## Metadata

- Community and Fraternal Centers [https://etdmpub.florida.gov/metadata/gc\\_communitycenter.htm](https://etdmpub.florida.gov/metadata/gc_communitycenter.htm)
- Correctional Facilities in Florida [https://etdmpub.florida.gov/metadata/gc\\_correctional.htm](https://etdmpub.florida.gov/metadata/gc_correctional.htm)
- Cultural Centers in Florida [https://etdmpub.florida.gov/metadata/gc\\_culturecenter.htm](https://etdmpub.florida.gov/metadata/gc_culturecenter.htm)
- Fire Department and Rescue Station Facilities in Florida [https://etdmpub.florida.gov/metadata/gc\\_firestat.htm](https://etdmpub.florida.gov/metadata/gc_firestat.htm)
- Local, State, and Federal Government Buildings in Florida [https://etdmpub.florida.gov/metadata/gc\\_govbuild.htm](https://etdmpub.florida.gov/metadata/gc_govbuild.htm)
- Florida Health Care Facilities [https://etdmpub.florida.gov/metadata/gc\\_health.htm](https://etdmpub.florida.gov/metadata/gc_health.htm)
- Hospital Facilities in Florida [https://etdmpub.florida.gov/metadata/gc\\_hospitals.htm](https://etdmpub.florida.gov/metadata/gc_hospitals.htm)
- Law Enforcement Facilities in Florida [https://etdmpub.florida.gov/metadata/gc\\_lawenforce.htm](https://etdmpub.florida.gov/metadata/gc_lawenforce.htm)
- Florida Parks and Recreational Facilities [https://etdmpub.florida.gov/metadata/gc\\_parks.htm](https://etdmpub.florida.gov/metadata/gc_parks.htm)
- Religious Centers [https://etdmpub.florida.gov/metadata/gc\\_religion.htm](https://etdmpub.florida.gov/metadata/gc_religion.htm)
- Florida Public and Private Schools [https://etdmpub.florida.gov/metadata/gc\\_schools.htm](https://etdmpub.florida.gov/metadata/gc_schools.htm)
- Social Service Centers [https://etdmpub.florida.gov/metadata/gc\\_socialservice.htm](https://etdmpub.florida.gov/metadata/gc_socialservice.htm)
- Assisted Rental Housing Units in Florida [https://etdmpub.florida.gov/metadata/gc\\_assisted\\_housing.htm](https://etdmpub.florida.gov/metadata/gc_assisted_housing.htm)
- Group Care Facilities <https://etdmpub.florida.gov/metadata/groupcare.htm>
- Mobile Home Parks in Florida [https://etdmpub.florida.gov/metadata/gc\\_mobilehomes.htm](https://etdmpub.florida.gov/metadata/gc_mobilehomes.htm)
- Migrant Camps in Florida <https://etdmpub.florida.gov/metadata/migrant.htm>
- Veteran Organizations and Facilities [https://etdmpub.florida.gov/metadata/gc\\_veterans.htm](https://etdmpub.florida.gov/metadata/gc_veterans.htm)
- Generalized Land Use - Florida DOT District 6 [https://etdmpub.florida.gov/metadata/d6\\_lu\\_gen.htm](https://etdmpub.florida.gov/metadata/d6_lu_gen.htm)
- Census Block Groups in Florida [https://etdmpub.florida.gov/metadata/e2\\_cenacs\\_cci.htm](https://etdmpub.florida.gov/metadata/e2_cenacs_cci.htm)
- 1990 Census Block Groups in Florida [https://etdmpub.florida.gov/metadata/e2\\_cenblkgrp\\_1990\\_cci.htm](https://etdmpub.florida.gov/metadata/e2_cenblkgrp_1990_cci.htm)
- 2000 Census Block Groups in Florida [https://etdmpub.florida.gov/metadata/e2\\_cenblkgrp\\_2000\\_cci.htm](https://etdmpub.florida.gov/metadata/e2_cenblkgrp_2000_cci.htm)
- 2010 Census Block Groups in Florida [https://etdmpub.florida.gov/metadata/e2\\_cenblkgrp\\_2010\\_cci.htm](https://etdmpub.florida.gov/metadata/e2_cenblkgrp_2010_cci.htm)