

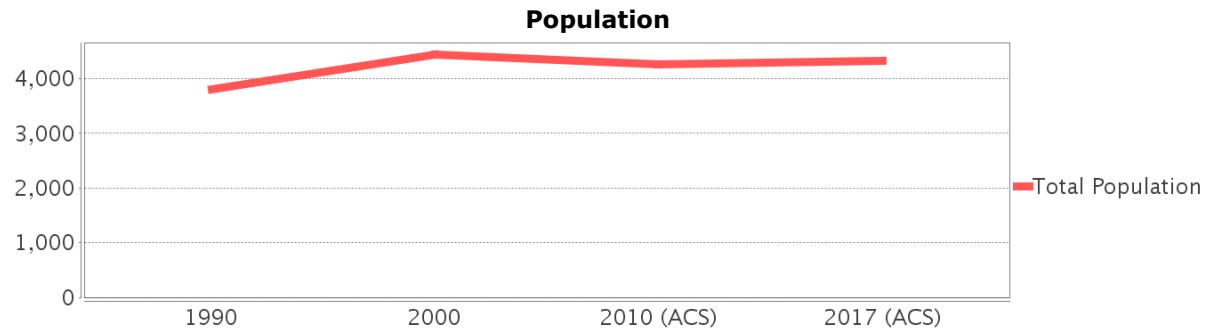
# Sociocultural Data Report

## Tice

**Area:** 1.248 square miles  
**Jurisdiction(s):** Cities: Fort Myers  
 Counties: Lee

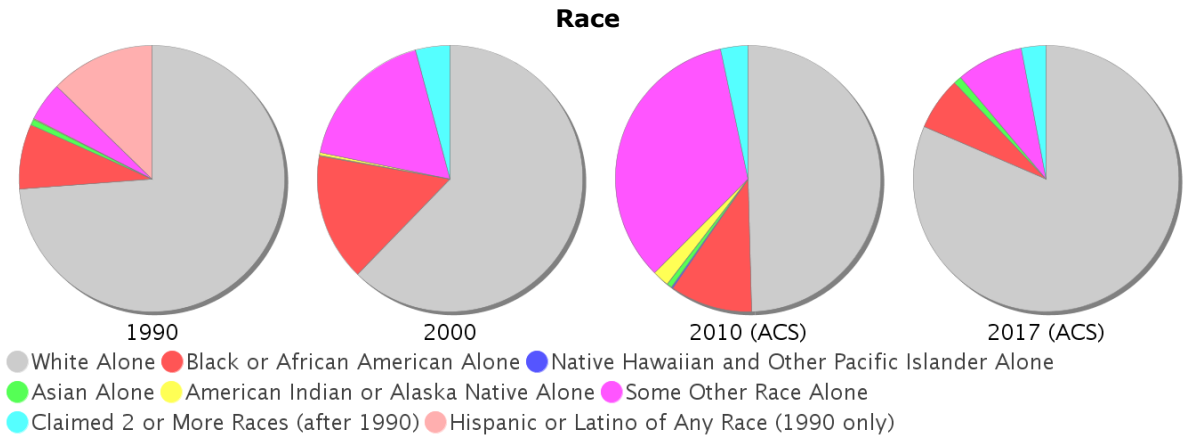
## General Population Trends

Description	1990	2000	2010 (ACS)	2017 (ACS)
Total Population	3,798	4,434	4,253	4,325
Total Households	1,479	1,462	1,301	1,159
Average Persons per Acre	4.48	5.73	5.68	5.98
Average Persons per Household	2.74	3.16	3.30	3.67
Average Persons per Family	3.28	3.69	3.70	4.84
Males	1,838	2,243	2,448	2,350
Females	1,960	2,191	1,805	1,975

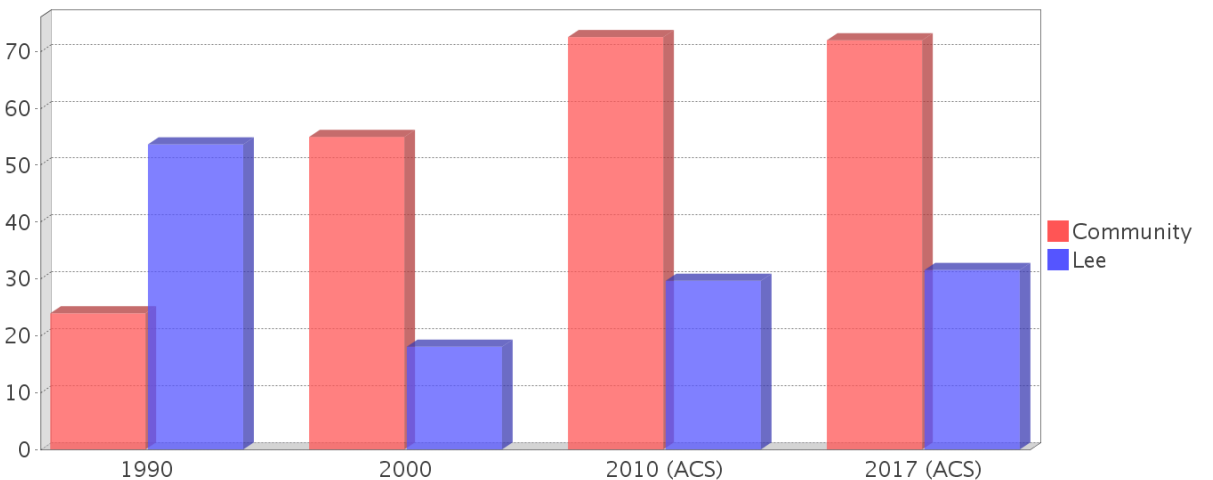


## Race and Ethnicity Trends

Description	1990	2000	2010 (ACS)	2017 (ACS)
White Alone	3,209 (84.49%)	2,760 (62.25%)	2,108 (49.57%)	3,522 (81.43%)
Black or African American Alone	344 (9.06%)	688 (15.52%)	426 (10.02%)	279 (6.45%)
Native Hawaiian and Other Pacific Islander Alone	0 (0.00%)	0 (0.00%)	9 (0.21%)	0 (0.00%)
Asian Alone	33 (0.87%)	2 (0.05%)	28 (0.66%)	41 (0.95%)
American Indian or Alaska Native Alone	6 (0.16%)	14 (0.32%)	86 (2.02%)	0 (0.00%)
Some Other Race Alone	206 (5.42%)	785 (17.70%)	1,454 (34.19%)	353 (8.16%)
Claimed 2 or More Races	NA (NA)	184 (4.15%)	142 (3.34%)	130 (3.01%)
Hispanic or Latino of Any Race	554 (14.59%)	1,769 (39.90%)	2,626 (61.74%)	2,767 (63.98%)
Not Hispanic or Latino	3,244 (85.41%)	2,665 (60.10%)	1,627 (38.26%)	1,558 (36.02%)
Minority	909 (23.93%)	2,437 (54.96%)	3,084 (72.51%)	3,112 (71.95%)



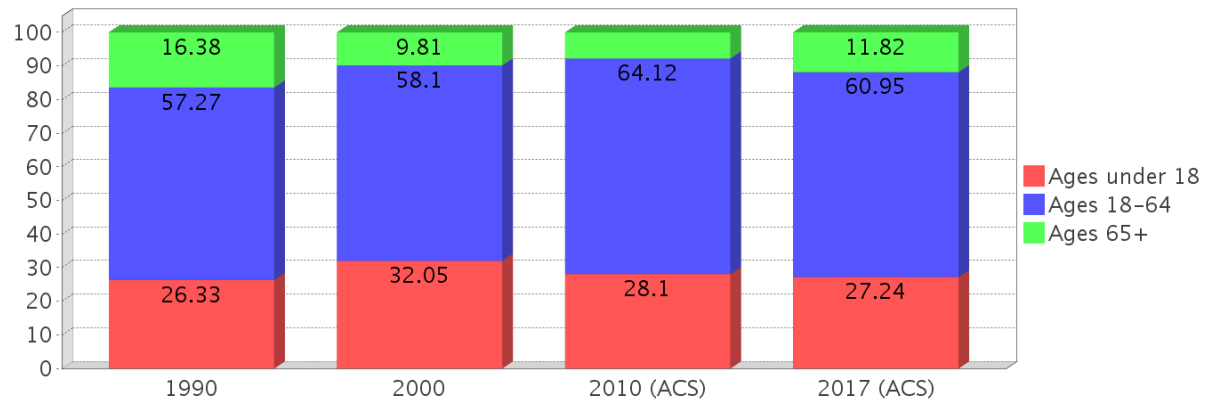
## Minority Percentage Population



### Age Trends

Description	1990	2000	2010 (ACS)	2017 (ACS)
Under Age 5	9.22%	8.43%	10.37%	6.06%
Ages 5-17	17.11%	23.61%	17.73%	21.18%
Ages 18-21	4.74%	5.64%	7.19%	3.49%
Ages 22-29	13.80%	11.23%	16.93%	11.42%
Ages 30-39	14.72%	17.07%	14.74%	17.18%
Ages 40-49	10.22%	11.57%	11.76%	11.40%
Ages 50-64	13.80%	12.58%	13.50%	17.46%
Age 65 and Over	16.38%	9.81%	7.76%	11.82%
-Ages 65-74	8.77%	4.51%	4.63%	7.72%
-Ages 75-84	5.90%	3.88%	2.30%	2.59%
-Age 85 and Over	1.71%	1.42%	0.80%	1.50%
Median Age	NA	28	29	34

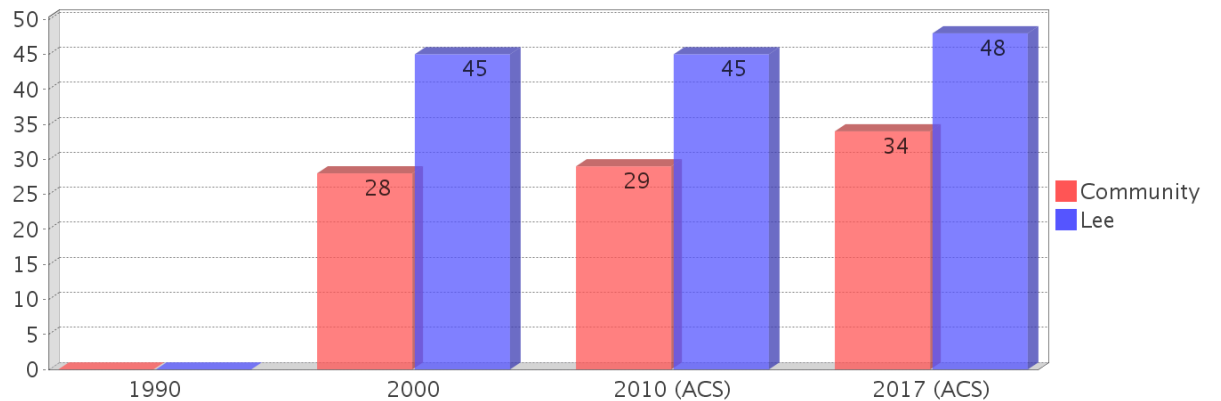
### Percentage Population by Age Group



### Income Trends

Description	1990	2000	2010 (ACS)	2017 (ACS)
Median Household Income	\$20,508	\$27,083	\$42,852	\$31,488
Median Family Income	\$25,583	\$32,361	\$38,958	\$37,349
Population below Poverty Level	16.77%	33.24%	36.12%	38.96%
Households below Poverty Level	15.48%	30.16%	24.67%	32.79%
Households with Public Assistance Income	11.97%	6.02%	1.69%	6.13%

### Median Age Comparison

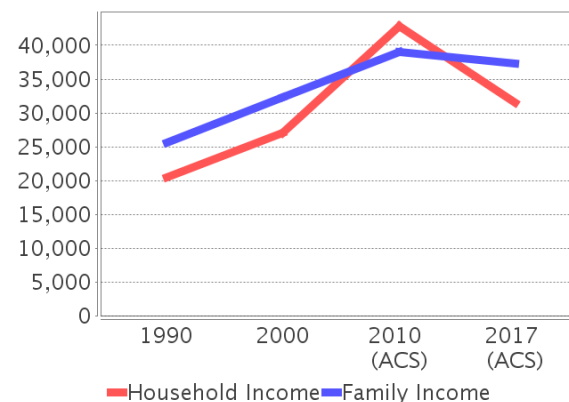


### Disability Trends

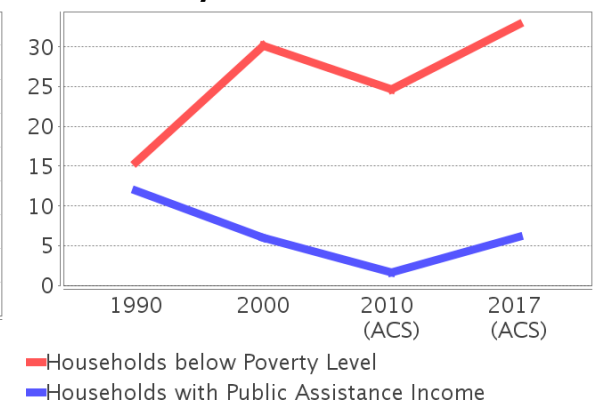
See the Data Sources section below for an explanation about the differences in disability data among the various years.

Description	1990	2000	2010 (ACS)	2017 (ACS)
Population 16 To 64 Years with a disability	286 (9.88%)	852 (20.99%)	(NA)	(NA)
Population 20 To 64 Years with a disability	(NA)	(NA)	(NA)	306 (12.07%)

### Income Trends



### Poverty and Public Assistance



## Educational Attainment Trends

Age 25 and Over

Description	1990	2000	2010 (ACS)	2017 (ACS)
Less than 9th Grade	367 (14.77%)	510 (20.36%)	1,026 (33.83%)	992 (34.93%)
9th to 12th Grade, No Diploma	643 (25.89%)	605 (24.15%)	427 (14.08%)	351 (12.36%)
High School Graduate or Higher	1,473 (59.30%)	1,389 (55.45%)	1,581 (52.13%)	1,497 (52.71%)
Bachelor's Degree or Higher	166 (6.68%)	144 (5.75%)	313 (10.32%)	162 (5.70%)

## Language Trends

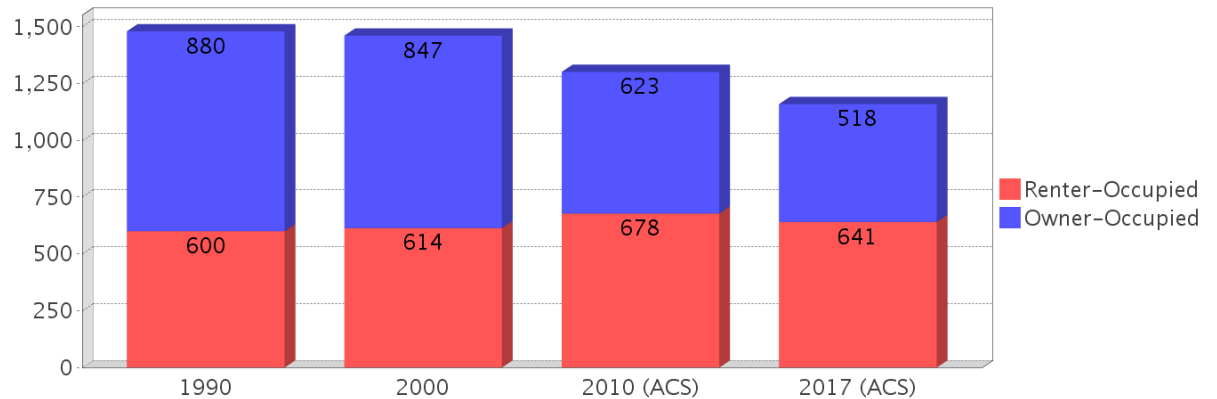
Age 5 and Over

Description	1990	2000	2010 (ACS)	2017 (ACS)
Speaks English Well	104 (3.00%)	290 (7.14%)	482 (10.81%)	474 (11.67%)
Speaks English Not Well	NA (NA)	335 (8.25%)	1,004 (22.53%)	534 (13.14%)
Speaks English Not at All	NA (NA)	354 (8.72%)	561 (12.59%)	642 (15.80%)
Speaks English Not Well or Not at All	68 (1.96%)	689 (16.97%)	1,565 (35.11%)	1,176 (28.94%)

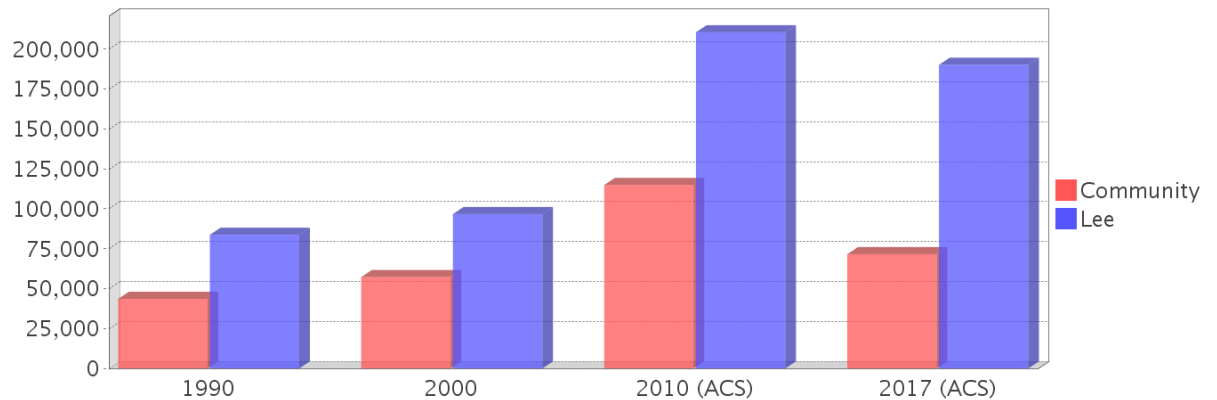
## Housing Trends

Description	1990	2000	2010 (ACS)	2017 (ACS)
Total	1,784	1,685	1,680	1,613
Units per Acre	2.58	2.41	2.43	2.33
Single-Family Units	1,047	1,211	1,280	1,212
Multi-Family Units	292	290	253	243
Mobile Home Units	129	175	205	149
Owner-Occupied Units	880	847	623	518
Renter-Occupied Units	600	614	678	641
Vacant Units	305	224	379	454
Median Housing Value	\$43,600	\$57,200	\$114,900	\$71,600
Occupied Housing Units w/No Vehicle	83 (5.61%)	218 (14.92%)	120 (9.22%)	176 (15.19%)

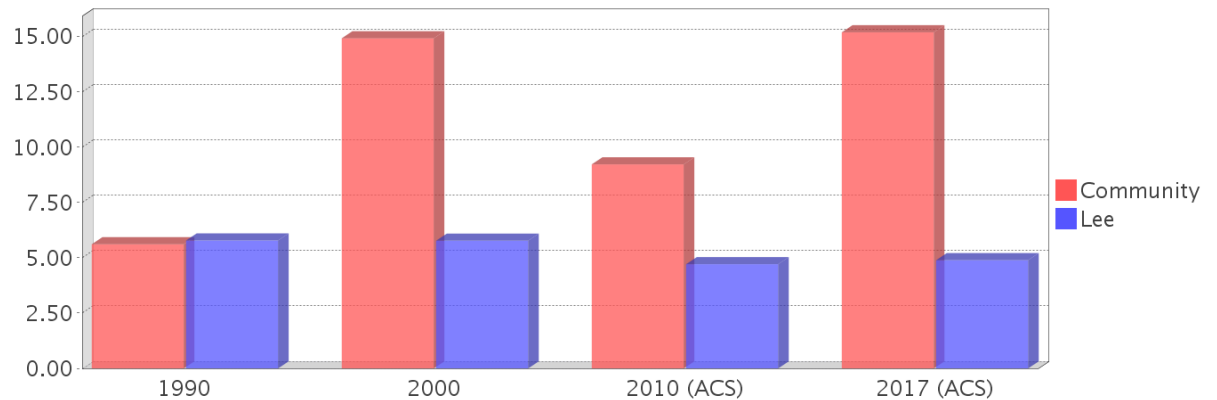
## Housing Tenure



## Median Housing Value Comparison

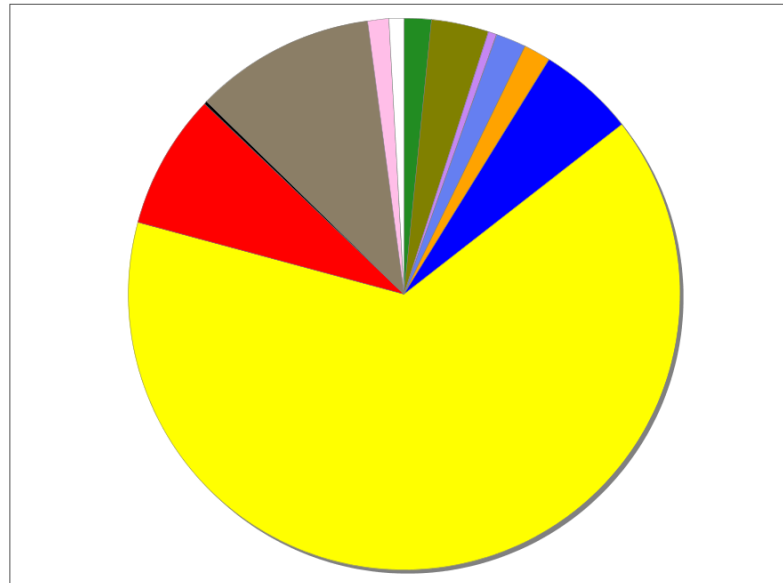


## Occupied Units With No Vehicles Available



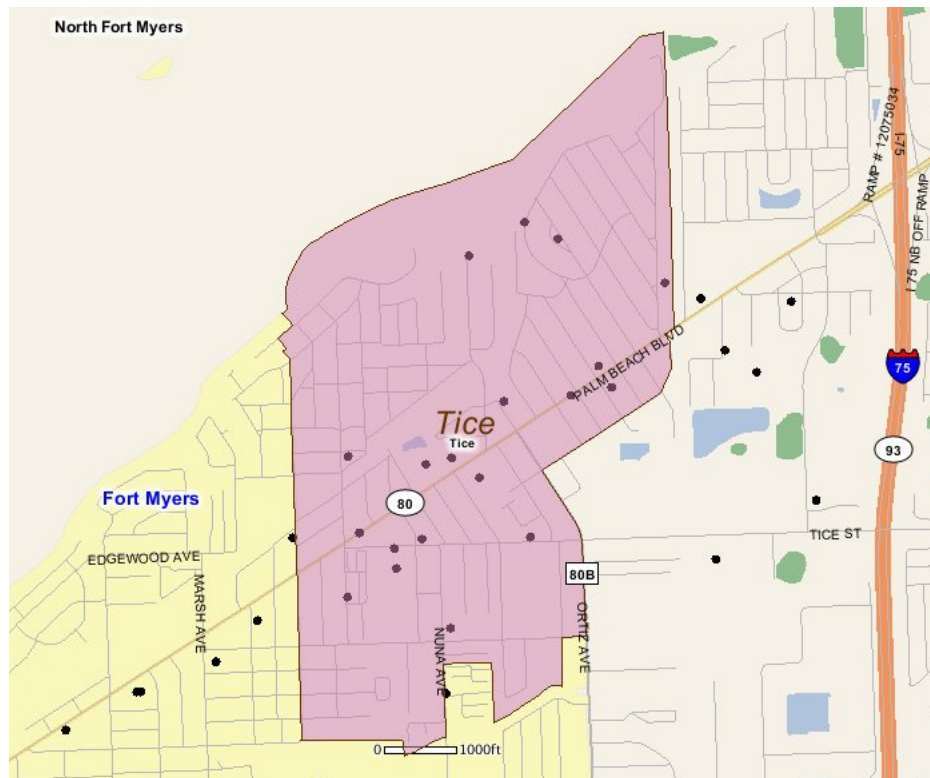
## Existing Land Use

Land Use Type	Acres	Percentage
Acreage Not Zoned For Agriculture	0	0.00%
Agricultural	9	1.13%
Centrally Assessed	19	2.38%
Industrial	3	0.38%
Institutional	10	1.25%
Mining	0	0.00%
Other	9	1.13%
Public/Semi-Public	32	4.01%
Recreation	0	0.00%
Residential	367	45.95%
Retail/Office	45	5.63%
Row	1	0.13%
Vacant Residential	60	7.51%
Vacant Nonresidential	7	0.88%
Water	0	0.00%
Parcels With No Values	5	0.63%



- Acreage Not Zoned For Agriculture
- Agricultural
- Centrally Assessed
- Industrial
- Institutional
- Mining
- Other
- Public/Semi-Public
- Recreation
- Residential
- Retail/Office
- Row
- Vacant Residential
- Vacant Nonresidential
- Water
- Parcels With No Values

## Location Maps



---

## Community Facilities

The community facilities information below is useful in a variety of ways for environmental evaluations. These community resources should be evaluated for potential sociocultural effects, such as accessibility and relocation potential. The facility types may indicate the types of population groups present in the project study area. Facility staff and leaders can be sources of community information such as who uses the facility and how it is used. Additionally, community facilities are potential public meeting venues.

### Community Centers (Points)

Facility Name	Address	Zip Code
AMERICAN LEGION POST 351	4800 PALM BEACH BLVD	33905

### Florida Parks and Recreational Facilities (Points)

Facility Name	Address	Zip Code
SCHANDLER HALL COMMUNITY PARK	356 FLAMINGO CIR	33905
MIRAMAR / AVOCADO PARK	MIRAMAR RD & AVACADO CT	33905
ROYAL PALM PARK	300 ROYAL PALM PARK RD	33905
RUSSELL PARK BOAT RAMP	237 LAGOON DR	33905

### Government Building

Facility Name	Address	Zip Code
U S POST OFFICE - TICE	4585 PALM BEACH BLVD	33905

### Healthcare Facilities (Geocoded)

Facility Name	Address	Zip Code
SAREEN, RAJAN K., MD	4801 PALM BEACH BOULEVARD 51108	33905
VASQUEZ, FRANCISCO M., MD PA	4595 PALM BEACH BOULEVARD, SUITE 1	33905

### Mobile Home Parks in Florida

Facility Name	Address	Zip Code
FLAMINGO MOBILE RESORT	4729 PALM BEACH BOULEVARD	34748
TICE COURTS	541 NEW YORK DR	33905

### Public and Private Schools (Points)

Facility Name	Address	Zip Code
TICE ELEMENTARY SCHOOL	4524 TICE ST	33905

### Religious Centers (Points)

Facility Name	Address	Zip Code
CHURCH OF THE NAZARENE PALM BEACH BOULEVARD	4630 PALM BEACH BLVD	33905
BIBLE WAY CHURCH OF GOD OF MTN	4725 TICE STREET	33905
LIGHTHOUSE BAPTIST CHURCH OF FORT MYERS	297 KINGSTON DR	33905
IGLESIA EVANGELICA DE SANTIDAD	587 NUNA AVE	33905
TICE UNITED METHODIST CHURCH	4545 TICE STREET	33905
IGLESIA PENTECOSTAL UNIDA LATINO AMERICANA	387 NEW YORK DRIVE	33905

### US Census Places

Facility Name
Tice
Fort Myers

### Veteran Organizations and Facilities (Points)

Facility Name	Address	Zip Code
AMERICAN LEGION POST 351	4800 PALM BEACH BOULEVARD	33905

---

## Block Groups

The following Census Block Groups were used to calculate demographics for this report.

### 1990 Census Block Groups

120710003023, 120710003024, 120710003014, 120710005013, 120710004004, 120710004002, 120710004001, 120710005014

### 2000 Census Block Groups

120710005033, 120710005041, 120710003014, 120710004011, 120710004012, 120710003013, 120710003023, 120710004013, 120710003012, 120710003024

### 2010 Census Block Groups

120710003012, 120710003023, 120710003013, 120710005033, 120710005041, 120710003024, 120710003014, 120710004011, 120710004012, 120710004013

### 2017 Census Block Groups

120710003024, 120710004012, 120710003012, 120710003023, 120710004013, 120710003013, 120710005041, 120710005033, 120710003014, 120710004011

---

## Data Sources

### Area

The geographic area of the community based on a user-specified community boundary or area of interest (AOI) boundary.

### Jurisdiction

Jurisdiction(s) includes local government boundaries that intersect the community or AOI boundary.

### Demographic Data

Demographic data reported under the headings General Population Trends, Race and Ethnicity Trends, Age Trends, Income Trends, Educational Attainment Trends, Language Trends, and Housing Trends is from the U.S. Decennial Census (1990, 2000) and the American Community Survey (ACS) 5-year estimates from 2006-2010 and 2013-2017. The data was gathered at the block group level for user-specified community boundaries and AOIs, and at the county level for counties. Depending on the dataset, the data represents 100% counts (Census Summary File 1) or sample-based information (Census Summary File 3 or ACS).

### About the Census Data:

User-specified community boundaries and AOIs do not always correspond precisely to block group boundaries. In these instances, adjustment of the geographic area and data for affected block groups is required to estimate the actual population. To improve the accuracy of such estimates in the SDR report, the census block group data was adjusted to exclude all census blocks with a population of two or fewer. These areas were eliminated from the corresponding years' block groups. Next, the portion of the block group that lies outside of the community or AOI boundary was removed. The demographics within each block group were then recalculated, assuming an equal area distribution of the population. Note that there may be areas where there is no population.

Use caution when comparing the 100% count data (Decennial Census) to the sample-based data (ACS). In any given year, about one in 40 or 2.5% of U.S. households will receive the ACS questionnaire. Over any five-year period, about

one in eight households will receive the questionnaire, as compared to about one in six that received the long form questionnaire for the Decennial Census 2000. (Source: <http://mcdc.missouri.edu/pub/data/acs/Readme.shtml>) The U.S. Census Bureau provides help with this process:

<https://www.census.gov/programs-surveys/acs/guidance/comparing-acs-data/2017.html>

Use caution when interpreting changes in Race and Ethnicity over time. Starting with the 2000 Decennial Census, respondents were given a new option of selecting one or more race categories. Also in 2000, the placement of the question about Hispanic origin changed, helping to increase responsiveness to the Hispanic-origin question. Because of these and other changes, the 1990 data on race and ethnicity are not directly comparable with data from later censuses. (Source: <http://www.census.gov/prod/2001pubs/c2kbr01-1.pdf>; <http://www.census.gov/pred/www/rpts/Race%20and%20Ethnicity%20FINAL%20report.pdf>)

The "Minority" calculations are derived from Census and ACS data using both the race and ethnicity responses. On this report, "Minority" refers to individuals who list a race other than White and/or list their ethnicity as Hispanic/Latino. In other words, people who are multi-racial, any single race other than White, or Hispanic/Latino of any race are considered minorities.

Disability data is not included in the 2010 Decennial Census, or the 2006-2010 ACS. This data is available in the 2013-2017 ACS.

Because of changes made to the Census and ACS questions between 1990 and 2017, disability variables should not be compared from year to year. For example: 1) With the 1990 data the disabilities are listed as a "work disability" while this distinction is not made with 2000 or 2017 ACS data; 2) The 2017 ACS data includes the institutionalized population (e.g. persons in prisons and group homes), while this population is not included in 1990 or 2000; 3) the age groupings changed over the years.

Please take the following two concerns into account when viewing this data: 1) With the 1990 data the disabilities are listed as a "work disability" while this distinction is not made with 2000 or 2017 ACS data; 2) The 2017 ACS data includes the institutionalized population (e.g. persons in prisons and group homes), while this population is not included in 1990 or 2000.

The category Bachelor's Degree or Higher under the heading Educational Attainment Trends is a subset of the category High School Graduate or Higher.

Income of households. This includes the income of the householder and all other individuals 15 years old and over in the household, whether they are related to the householder or not. Because many households consist of only one person, average household income is usually less than average family income.

Income of families. In compiling statistics on family income, the incomes of all members 15 years old and over related to the householder are summed and treated as a single amount.

Age Trends median age for 1990 is not available.

### **Land Use Data**

The Land Use information Indicates acreages and percentages for the generalized land use types used to group parcel-specific, existing land use assigned by the county property appraiser office according to the Florida Department of Revenue land use codes.

### **Community Facilities Data**

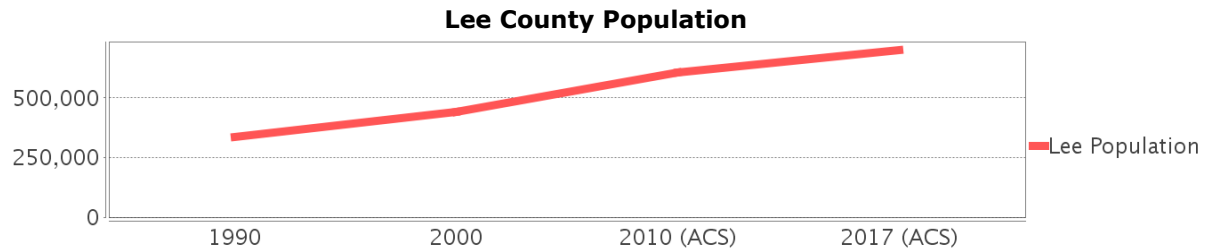
- Assisted Rental Housing Units - Identifies multifamily rental developments that receive funding assistance under federal, state, and local government programs to offer affordable housing as reported by the Shimberg Center for Housing Studies, University of Florida.

- Mobile Home Parks - Identifies approved or acknowledged mobile home parks reported by the Florida Department of Business and Professional Regulation and Florida Department of Health.
- Migrant Camps - Identifies migrant labor camp facilities inspected by the Florida Department of Health.
- Group Care Facilities - Identifies group care facilities inspected by the Florida Department of Health.
- Community Center and Fraternal Association Facilities - Identifies facilities reported by multiple sources.
- Law Enforcement Correctional Facilities - Identifies facilities reported by multiple sources.
- Cultural Centers - Identifies cultural centers including organizations, buildings, or complexes that promote culture and arts (e.g., aquariums and zoological facilities; arboreta and botanical gardens; dinner theaters; drive-ins; historical places and services; libraries; motion picture theaters; museums and art galleries; performing arts centers; performing arts theaters; planetariums; studios and art galleries; and theater producers stage facilities) reported by multiple sources.
- Fire Department and Rescue Station Facilities - Identifies facilities reported by multiple sources.
- Government Buildings - Identifies local, state, and federal government buildings reported by multiple sources.
- Health Care Facilities - Identifies health care facilities including abortion clinics, dialysis clinics, medical doctors, nursing homes, osteopaths, state laboratories/clinics, and surgicenters/walk-in clinics reported by the Florida Department of Health.
- Hospital Facilities - Identifies hospital facilities reported by multiple sources.
- Law Enforcement Facilities - Identifies law enforcement facilities reported by multiple sources.
- Parks and Recreational Facilities - Identifies parks and recreational facilities reported by multiple sources.
- Religious Center Facilities - Identifies religious centers including churches, temples, synagogues, mosques, chapels, centers, and other types of religious facilities reported by multiple sources.
- Private and Public Schools - Identifies private and public schools reported by multiple sources.
- Social Service Centers - Identifies social service centers reported by multiple sources.
- Veteran Organizations and Facilities

# Lee County Demographic Profile

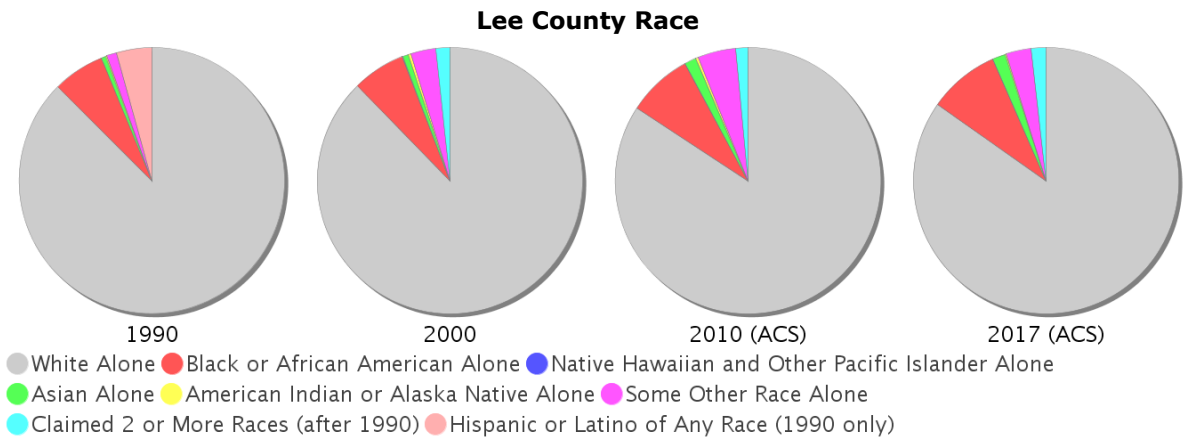
## General Population Trends - Lee

Description	1990	2000	2010 (ACS)	2017 (ACS)
Total Population	335,113	440,888	606,165	700,165
Total Households	140,124	188,599	245,751	264,325
Average Persons per Acre	0.641	0.82	1.128	1.302
Average Persons per Household	2.392	2.306	2.00	2.61
Average Persons per Family	2.802	2.809	3.012	3.28
Males	161,917	215,618	298,205	342,731
Females	173,196	225,270	307,960	357,434



## Race and Ethnicity Trends - Lee

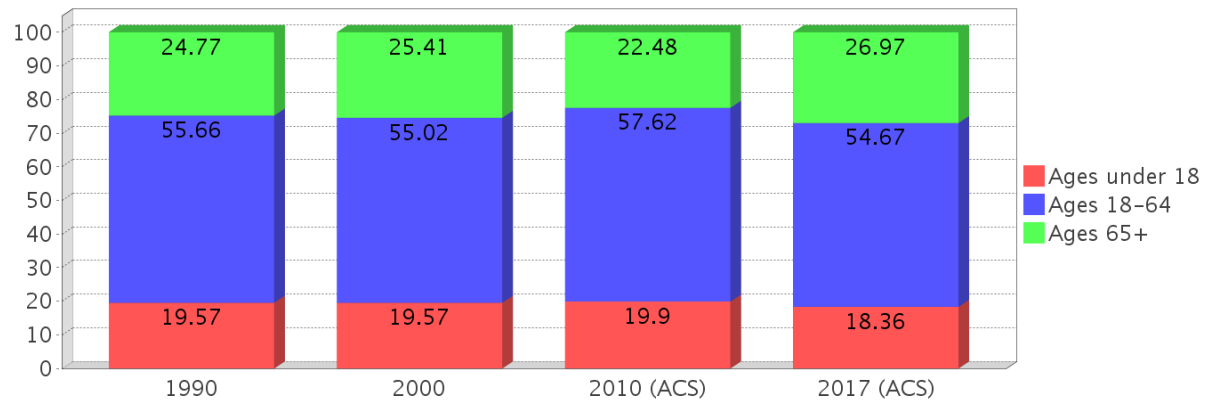
Description	1990	2000	2010 (ACS)	2017 (ACS)
White Alone	306,200 (91.37%)	386,502 (87.66%)	510,405 (84.20%)	593,227 (84.73%)
Black or African American Alone	22,184 (6.62%)	28,570 (6.48%)	48,208 (7.95%)	60,664 (8.66%)
Native Hawaiian and Other Pacific Islander Alone	(NA)	238 (0.05%)	86 (0.01%)	382 (0.05%)
Asian Alone	1,820 (0.54%)	3,159 (0.72%)	8,528 (1.41%)	10,856 (1.55%)
American Indian or Alaska Native Alone	672 (0.20%)	1,340 (0.30%)	1,620 (0.27%)	1,246 (0.18%)
Some Other Race Alone	4,163 (1.24%)	13,489 (3.06%)	28,409 (4.69%)	21,277 (3.04%)
Claimed 2 or More Races	(NA)	7,590 (1.72%)	8,909 (1.47%)	12,513 (1.79%)
Hispanic or Latino of Any Race	15,094 (4.50%)	41,993 (9.52%)	106,696 (17.60%)	141,544 (20.22%)
Not Hispanic or Latino	320,019 (95.50%)	398,895 (90.48%)	499,469 (82.40%)	558,621 (79.78%)
Minority	179,706 (53.63%)	79,629 (18.06%)	179,706 (29.65%)	220,915 (31.55%)



### Age Trends - Lee

Description	1990	2000	2010 (ACS)	2017 (ACS)
Under Age 5	5.95%	5.24%	5.57%	4.81%
Ages 5-17	13.62%	14.33%	14.33%	13.54%
Ages 18-21	4.08%	3.48%	4.56%	4.16%
Ages 22-29	10.22%	7.51%	8.64%	8.48%
Ages 30-39	13.70%	12.49%	11.14%	10.42%
Ages 40-49	10.99%	12.99%	12.93%	11.18%
Ages 50-64	16.67%	18.55%	20.35%	20.44%
Age 65 and Over	24.77%	25.41%	22.48%	26.97%
-Ages 65-74	15.35%	13.74%	12.30%	15.17%
-Ages 75-84	7.72%	9.23%	7.52%	8.59%
-Age 85 and Over	1.71%	2.44%	2.66%	3.22%
Median Age	NA	45	45	48

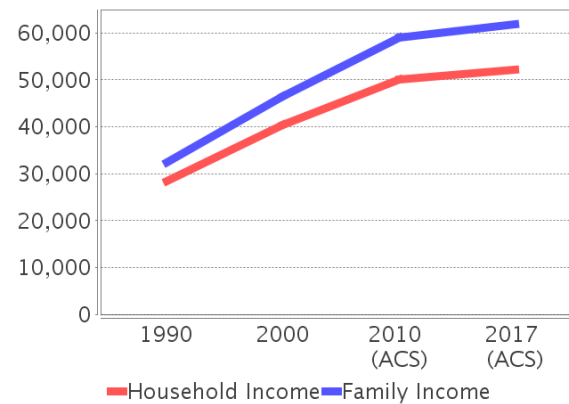
Percentage Population by Age Group - Lee



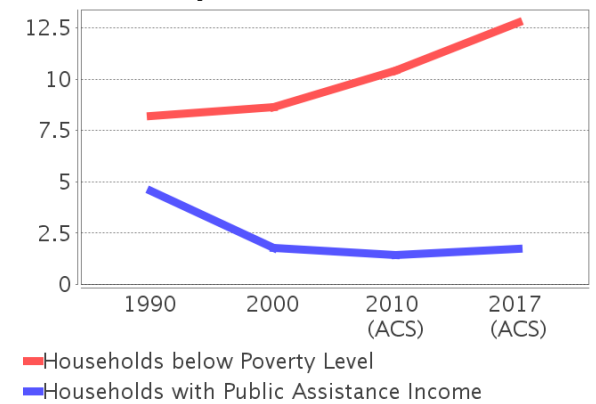
### Income Trends - Lee

Description	1990	2000	2010 (ACS)	2017 (ACS)
Median Household Income	\$28,448	\$40,319	\$50,014	\$52,052
Median Family Income	\$32,310	\$46,430	\$58,950	\$61,847
Population below Poverty Level	9.16%	9.73%	12.05%	14.87%
Households below Poverty Level	8.22%	8.64%	10.40%	12.75%
Households with Public Assistance Income	4.56%	1.75%	1.42%	1.72%

Income Trends



Poverty and Public Assistance



### Disability Trends - Lee

See the Data Sources section below for an explanation about the differences in disability data among the various years.

Description	1990	2000	2010 (ACS)	2017 (ACS)
Population 16 To 64 Years with a disability	18,191 (6.67%)	51,238 (12.39%)	NA (NA)	NA (NA)
Population 20 To 64 Years with a disability	NA (NA)	NA (NA)	NA (NA)	36,484 (10.02%)

## Educational Attainment Trends - Lee

Age 25 and Over

Description	1990	2000	2010 (ACS)	2017 (ACS)
Less than 9th Grade	17,582 (7.16%)	16,393 (5.00%)	21,284 (4.84%)	27,749 (5.32%)
9th to 12th Grade, No Diploma	39,144 (15.94%)	41,627 (12.70%)	37,304 (8.49%)	38,288 (7.34%)
High School Graduate or Higher	188,833 (76.90%)	269,652 (82.29%)	380,870 (86.67%)	455,532 (87.34%)
Bachelor's Degree or Higher	40,392 (16.45%)	69,153 (21.10%)	108,286 (24.64%)	142,016 (27.23%)

## Language Trends - Lee

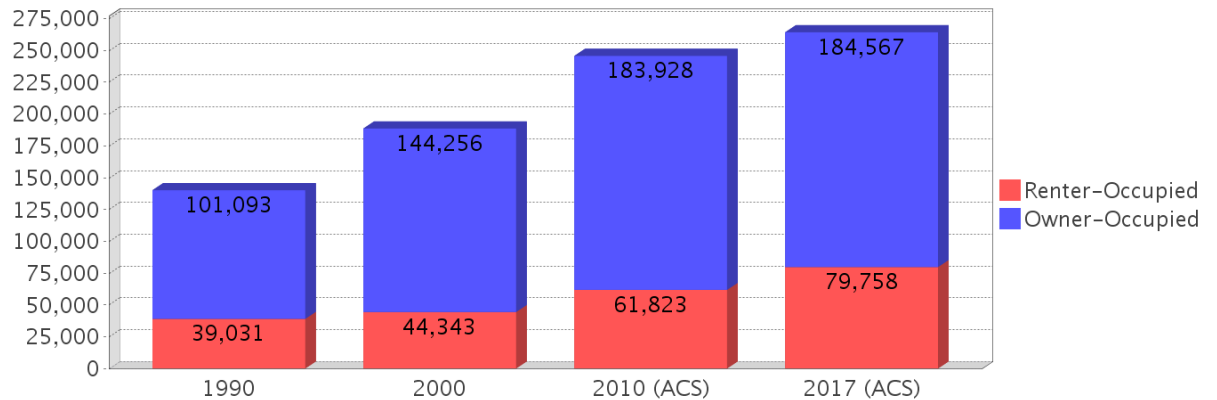
Age 5 and Over

Description	1990	2000	2010 (ACS)	2017 (ACS)
Speaks English Well	5,168 (1.64%)	10,843 (2.60%)	26,023 (4.55%)	25,271 (3.79%)
Speaks English Not Well	NA (NA)	9,080 (2.17%)	22,205 (3.88%)	20,999 (3.15%)
Speaks English Not at All	NA (NA)	4,501 (1.08%)	11,028 (1.93%)	16,443 (2.47%)
Speaks English Not Well or Not at All	3,752 (1.19%)	13,581 (3.25%)	33,233 (5.81%)	37,442 (5.62%)

## Housing Trends - Lee

Description	1990	2000	2010 (ACS)	2017 (ACS)
Total	189,051	245,405	363,892	383,224
Units per Acre	0.361	0.457	0.677	0.713
Single-Family Units	82,598	134,511	219,692	238,495
Multi-Family Units	35,495	70,952	103,959	106,749
Mobile Home Units	20,936	38,084	39,641	37,452
Owner-Occupied Units	101,093	144,256	183,928	184,567
Renter-Occupied Units	39,031	44,343	61,823	79,758
Vacant Units	48,927	56,806	118,141	118,899
Median Housing Value	\$83,700	\$96,700	\$210,600	\$190,200
Occupied Housing Units w/No Vehicle	8,105 (5.78%)	10,873 (5.77%)	11,565 (4.71%)	12,930 (4.89%)

## Housing Tenure - Lee



---

## County Data Sources

Demographic data reported is from the U.S. Decennial Census (1990, 2000) and the American Community Survey (ACS) 5-year estimates from 2006-2010 and 2013-2017. The data was gathered at the county level. Depending on the dataset, the data represents 100% counts (Census Summary File 1) or sample-based information (Census Summary File 3 or ACS).

### About the Census Data:

Use caution when comparing the 100% count data (Decennial Census) to the sample-based data (ACS). In any given year, about one in 40 or 2.5% of U.S. households will receive the ACS questionnaire. Over any five-year period, about one in eight households will receive the questionnaire, as compared to about one in six that received the long form questionnaire for the Decennial Census 2000. (Source: <http://mcdc.missouri.edu/pub/data/acs/Readme.shtml>) The U.S. Census Bureau provides help with this process:

<https://www.census.gov/programs-surveys/acs/guidance/comparing-acs-data/2017.html>

Use caution when interpreting changes in Race and Ethnicity over time. Starting with the 2000 Decennial Census, respondents were given a new option of selecting one or more race categories. Also in 2000, the placement of the question about Hispanic origin changed, helping to increase responsiveness to the Hispanic-origin question. Because of these and other changes, the 1990 data on race and ethnicity are not directly comparable with data from later censuses. (Source: <http://www.census.gov/prod/2001pubs/c2kbr01-1.pdf>; <http://www.census.gov/pred/www/rpts/Race%20and%20Ethnicity%20FINAL%20report.pdf>)

The "Minority" calculations are derived from Census and ACS data using both the race and ethnicity responses. On this report, "Minority" refers to individuals who list a race other than White and/or list their ethnicity as Hispanic/Latino. In other words, people who are multi-racial, any single race other than White, or Hispanic/Latino of any race are considered minorities.

Disability data is not included in the 2010 Decennial Census, or the 2006-2010 ACS. This data is available in the 2013-2017 ACS.

Because of changes made to the Census and ACS questions between 1990 and 2017, disability variables should not be compared from year to year. For example: 1) With the 1990 data the disabilities are listed as a "work disability" while this distinction is not made with 2000 or 2017 ACS data; 2) The 2017 ACS data includes the institutionalized population (e.g. persons in prisons and group homes), while this population is not included in 1990 or 2000; 3) the age groupings changed over the years.

Please take the following two concerns into account when viewing this data: 1) With the 1990 data the disabilities are listed as a "work disability" while this distinction is not made with 2000 or 2017 ACS data; 2) The 2017 ACS data includes the institutionalized population (e.g. persons in prisons and group homes), while this population is not included in 1990 or 2000.

source:

<https://www.census.gov/people/disability/methodology/acs.html>

<https://www.census.gov/population/www/cen2000/90vs00/index.html>

The category Bachelor's Degree or Higher under the heading Educational Attainment Trends is a subset of the category High School Graduate or Higher.

---

## Metadata

- Community and Fraternal Centers [https://etdmpub.florida-etat.org/metadata/gc\\_communitycenter.htm](https://etdmpub.florida-etat.org/metadata/gc_communitycenter.htm)
- Correctional Facilities in Florida [https://etdmpub.florida-etat.org/metadata/gc\\_correctional.htm](https://etdmpub.florida-etat.org/metadata/gc_correctional.htm)
- Cultural Centers in Florida [https://etdmpub.florida-etat.org/metadata/gc\\_culturecenter.htm](https://etdmpub.florida-etat.org/metadata/gc_culturecenter.htm)
- Fire Department and Rescue Station Facilities in Florida [https://etdmpub.florida-etat.org/metadata/gc\\_firestat.htm](https://etdmpub.florida-etat.org/metadata/gc_firestat.htm)
- Local, State, and Federal Government Buildings in Florida [https://etdmpub.florida-etat.org/metadata/gc\\_govbuild.htm](https://etdmpub.florida-etat.org/metadata/gc_govbuild.htm)
- Florida Health Care Facilities [https://etdmpub.florida-etat.org/metadata/gc\\_health.htm](https://etdmpub.florida-etat.org/metadata/gc_health.htm)
- Hospital Facilities in Florida [https://etdmpub.florida-etat.org/metadata/gc\\_hospitals.htm](https://etdmpub.florida-etat.org/metadata/gc_hospitals.htm)
- Law Enforcement Facilities in Florida [https://etdmpub.florida-etat.org/metadata/gc\\_lawenforce.htm](https://etdmpub.florida-etat.org/metadata/gc_lawenforce.htm)
- Florida Parks and Recreational Facilities [https://etdmpub.florida-etat.org/metadata/gc\\_parks.htm](https://etdmpub.florida-etat.org/metadata/gc_parks.htm)
- Religious Centers [https://etdmpub.florida-etat.org/metadata/gc\\_religion.htm](https://etdmpub.florida-etat.org/metadata/gc_religion.htm)
- Florida Public and Private Schools [https://etdmpub.florida-etat.org/metadata/gc\\_schools.htm](https://etdmpub.florida-etat.org/metadata/gc_schools.htm)
- Social Service Centers [https://etdmpub.florida-etat.org/metadata/gc\\_socialservice.htm](https://etdmpub.florida-etat.org/metadata/gc_socialservice.htm)
- Assisted Rental Housing Units in Florida [https://etdmpub.florida-etat.org/metadata/gc\\_assisted\\_housing.htm](https://etdmpub.florida-etat.org/metadata/gc_assisted_housing.htm)
- Group Care Facilities <https://etdmpub.florida-etat.org/metadata/groupcare.htm>
- Mobile Home Parks in Florida [https://etdmpub.florida-etat.org/metadata/gc\\_mobilehomes.htm](https://etdmpub.florida-etat.org/metadata/gc_mobilehomes.htm)
- Migrant Camps in Florida <https://etdmpub.florida-etat.org/metadata/migrant.htm>
- Veteran Organizations and Facilities [https://etdmpub.florida-etat.org/metadata/gc\\_veterans.htm](https://etdmpub.florida-etat.org/metadata/gc_veterans.htm)
- Generalized Land Use - Florida DOT District 1 [https://etdmpub.florida-etat.org/metadata/d1\\_lu\\_gen.htm](https://etdmpub.florida-etat.org/metadata/d1_lu_gen.htm)
- Census Block Groups in Florida [https://etdmpub.florida-etat.org/metadata/e2\\_cenacs\\_cci.htm](https://etdmpub.florida-etat.org/metadata/e2_cenacs_cci.htm)
- 1990 Census Block Groups in Florida [https://etdmpub.florida-etat.org/metadata/e2\\_cenblkgrp\\_1990\\_cci.htm](https://etdmpub.florida-etat.org/metadata/e2_cenblkgrp_1990_cci.htm)
- 2000 Census Block Groups in Florida [https://etdmpub.florida-etat.org/metadata/e2\\_cenblkgrp\\_2000\\_cci.htm](https://etdmpub.florida-etat.org/metadata/e2_cenblkgrp_2000_cci.htm)
- 2010 Census Block Groups in Florida [https://etdmpub.florida-etat.org/metadata/e2\\_cenblkgrp\\_2010\\_cci.htm](https://etdmpub.florida-etat.org/metadata/e2_cenblkgrp_2010_cci.htm)