

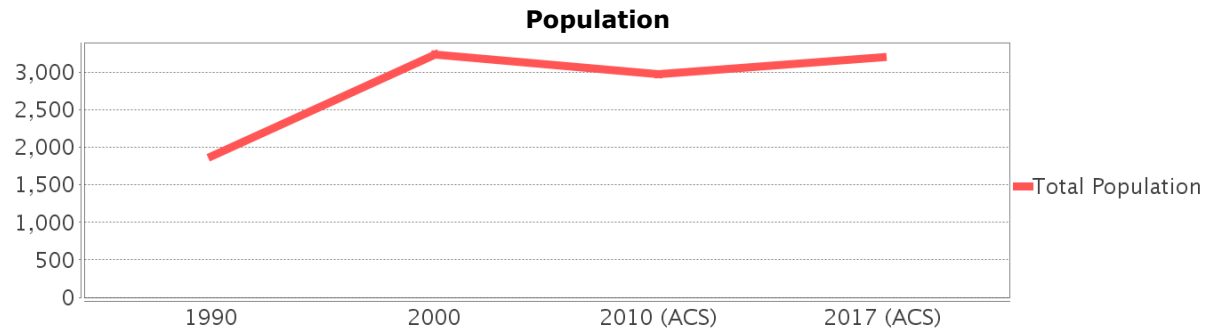
Sociocultural Data Report

Watergate

Area: 0.409 square miles
Jurisdiction(s): Cities: NA
 Counties: Palm Beach, Broward

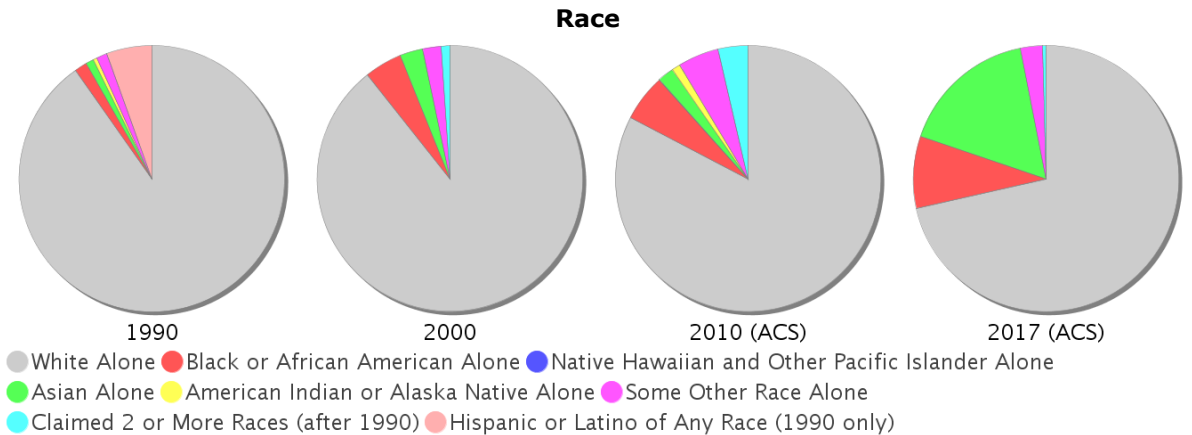
General Population Trends

Description	1990	2000	2010 (ACS)	2017 (ACS)
Total Population	1,877	3,231	2,970	3,191
Total Households	654	1,164	1,021	913
Average Persons per Acre	5.47	10.96	10.80	12.59
Average Persons per Household	2.71	2.78	2.88	3.22
Average Persons per Family	3.10	3.28	3.00	3.79
Males	938	1,586	1,493	1,520
Females	939	1,646	1,477	1,671

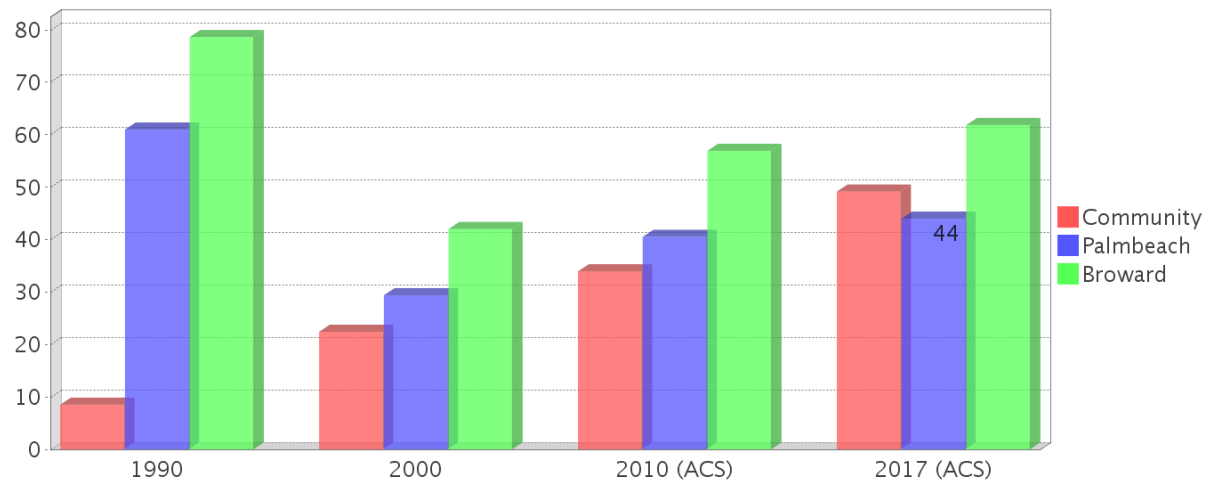


Race and Ethnicity Trends

Description	1990	2000	2010 (ACS)	2017 (ACS)
White Alone	1,792 (95.47%)	2,885 (89.29%)	2,455 (82.66%)	2,280 (71.45%)
Black or African American Alone	30 (1.60%)	148 (4.58%)	170 (5.72%)	279 (8.74%)
Native Hawaiian and Other Pacific Islander Alone	0 (0.00%)	0 (0.00%)	1 (0.03%)	0 (0.00%)
Asian Alone	19 (1.01%)	91 (2.82%)	57 (1.92%)	533 (16.70%)
American Indian or Alaska Native Alone	9 (0.48%)	0 (0.00%)	33 (1.11%)	0 (0.00%)
Some Other Race Alone	27 (1.44%)	72 (2.23%)	148 (4.98%)	86 (2.70%)
Claimed 2 or More Races	NA (NA)	34 (1.05%)	107 (3.60%)	13 (0.41%)
Hispanic or Latino of Any Race	109 (5.81%)	464 (14.36%)	647 (21.78%)	750 (23.50%)
Not Hispanic or Latino	1,768 (94.19%)	2,767 (85.64%)	2,323 (78.22%)	2,441 (76.50%)
Minority	160 (8.52%)	725 (22.44%)	1,009 (33.97%)	1,569 (49.17%)



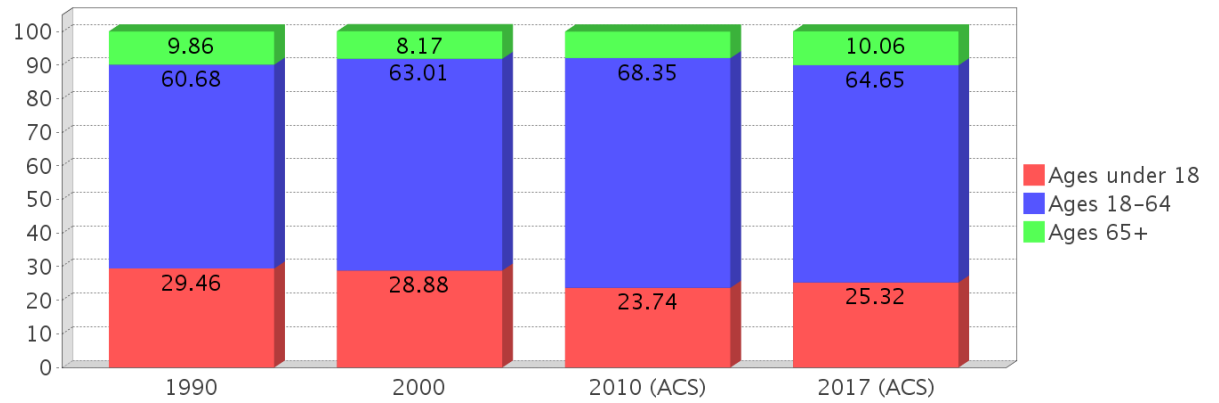
Minority Percentage Population



Age Trends

Description	1990	2000	2010 (ACS)	2017 (ACS)
Under Age 5	8.79%	7.83%	5.72%	5.05%
Ages 5-17	20.67%	21.05%	18.01%	20.28%
Ages 18-21	4.69%	5.20%	6.36%	2.19%
Ages 22-29	12.73%	9.04%	11.25%	21.62%
Ages 30-39	20.72%	23.74%	12.59%	8.71%
Ages 40-49	11.67%	15.32%	17.07%	8.52%
Ages 50-64	10.87%	9.72%	21.08%	23.60%
Age 65 and Over	9.86%	8.17%	7.88%	10.06%
-Ages 65-74	6.45%	4.46%	4.65%	7.02%
-Ages 75-84	2.82%	2.20%	2.12%	2.10%
-Age 85 and Over	0.59%	1.52%	1.11%	0.94%
Median Age	NA	36	37	35

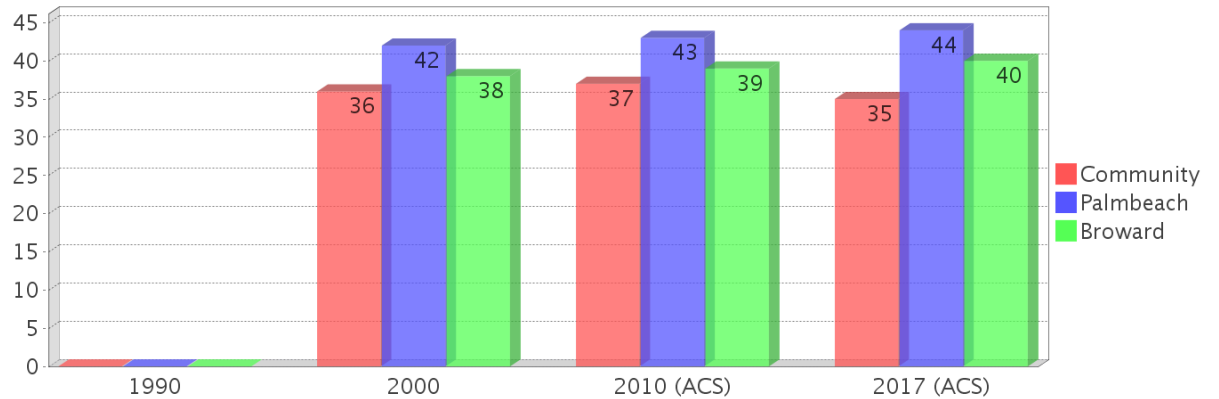
Percentage Population by Age Group



Income Trends

Description	1990	2000	2010 (ACS)	2017 (ACS)
Median Household Income	\$34,585	\$40,841	\$51,667	\$65,705
Median Family Income	\$38,316	\$45,694	\$67,614	\$64,792
Population below Poverty Level	7.14%	11.05%	14.28%	37.17%
Households below Poverty Level	8.41%	8.08%	12.83%	27.82%
Households with Public Assistance Income	4.74%	0.00%	0.00%	3.18%

Median Age Comparison

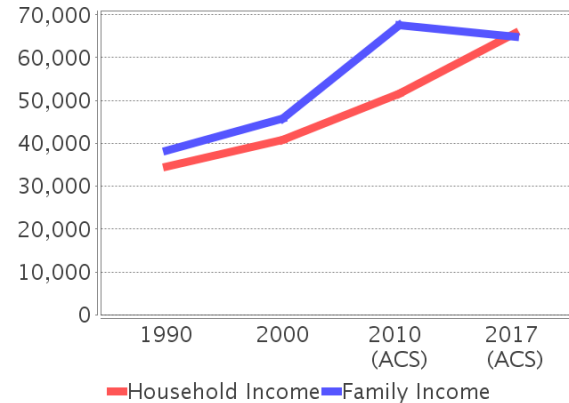


Disability Trends

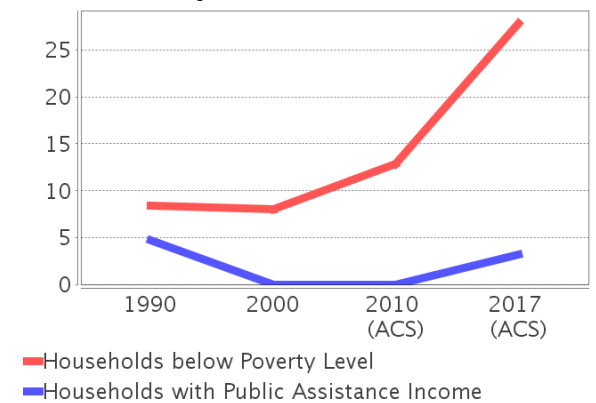
See the Data Sources section below for an explanation about the differences in disability data among the various years.

Description	1990	2000	2010 (ACS)	2017 (ACS)
Population 16 To 64 Years with a disability	121 (8.76%)	310 (10.41%)	(NA)	(NA)
Population 20 To 64 Years with a disability	(NA)	(NA)	(NA)	267 (13.17%)

Income Trends



Poverty and Public Assistance



Educational Attainment Trends

Age 25 and Over

Description	1990	2000	2010 (ACS)	2017 (ACS)
Less than 9th Grade	82 (7.14%)	97 (4.72%)	77 (4.05%)	157 (7.27%)
9th to 12th Grade, No Diploma	193 (16.81%)	293 (14.27%)	196 (10.31%)	285 (13.19%)
High School Graduate or Higher	873 (76.05%)	1,664 (81.05%)	1,627 (85.59%)	1,718 (79.54%)
Bachelor's Degree or Higher	111 (9.67%)	383 (18.66%)	309 (16.25%)	335 (15.51%)

Language Trends

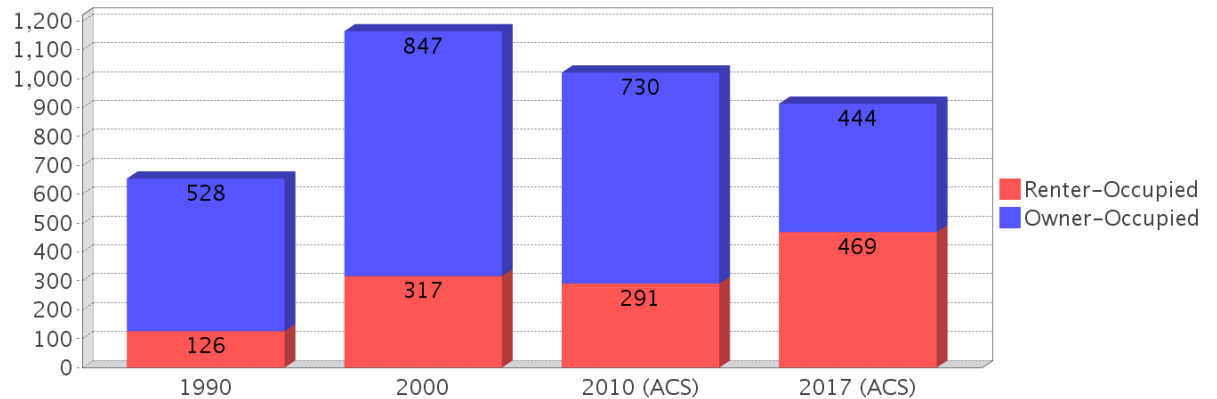
Age 5 and Over

Description	1990	2000	2010 (ACS)	2017 (ACS)
Speaks English Well	26 (1.52%)	164 (5.51%)	194 (7.27%)	202 (6.66%)
Speaks English Not Well	NA (NA)	96 (3.22%)	80 (3.00%)	315 (10.39%)
Speaks English Not at All	NA (NA)	49 (1.64%)	0 (0.00%)	171 (5.64%)
Speaks English Not Well or Not at All	10 (0.58%)	145 (4.87%)	80 (3.00%)	486 (16.03%)

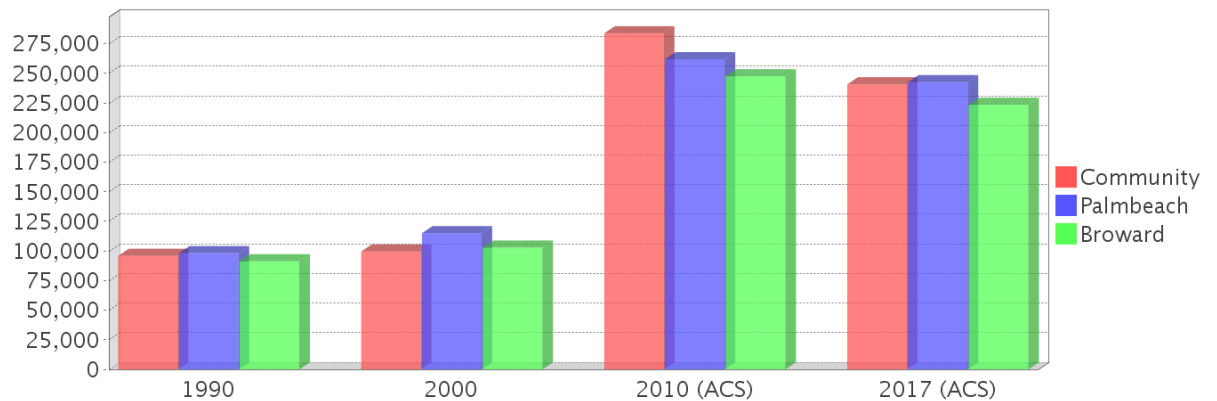
Housing Trends

Description	1990	2000	2010 (ACS)	2017 (ACS)
Total	750	1,216	1,121	1,113
Units per Acre	2.89	4.65	4.29	4.26
Single-Family Units	279	458	238	159
Multi-Family Units	43	251	155	102
Mobile Home Units	332	507	734	853
Owner-Occupied Units	528	847	730	444
Renter-Occupied Units	126	317	291	469
Vacant Units	96	52	100	201
Median Housing Value	\$95,900	\$99,600	\$283,800	\$240,700
Occupied Housing Units w/No Vehicle	36 (5.50%)	69 (5.93%)	14 (1.37%)	61 (6.69%)

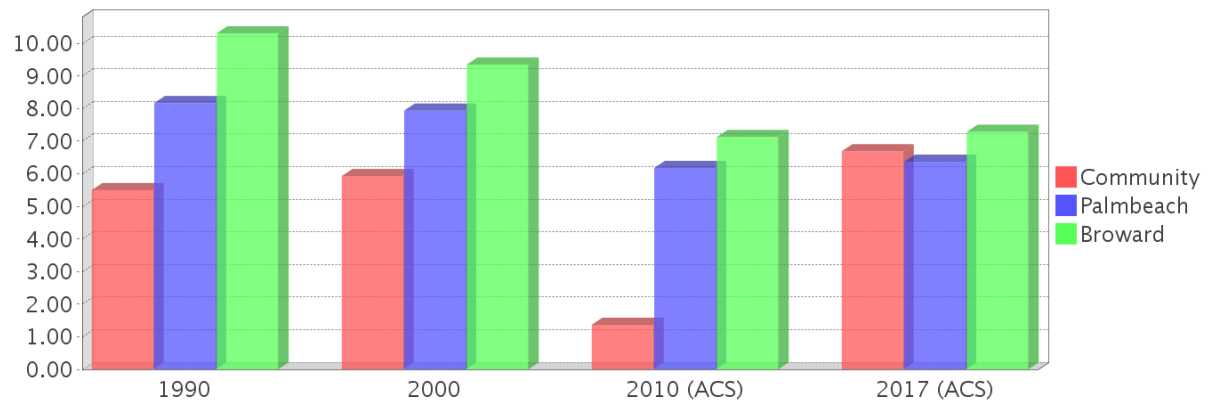
Housing Tenure



Median Housing Value Comparison

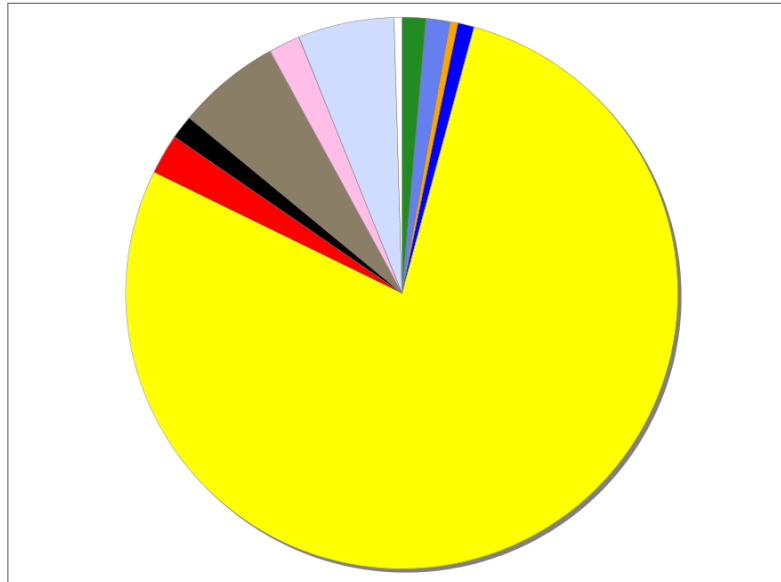


Occupied Units With No Vehicles Available



Existing Land Use

Land Use Type	Acres	Percentage
Acreage Not Zoned For Agriculture	0	0.00%
Agricultural	3	1.15%
Centrally Assessed	0	0.00%
Industrial	0	0.00%
Institutional	3	1.15%
Mining	0	0.00%
Other	1	0.38%
Public/Semi-Public	2	0.76%
Recreation	<0.5	<0.19%
Residential	167	63.87%
Retail/Office	5	1.91%
Row	3	1.15%
Vacant Residential	13	4.97%
Vacant Nonresidential	4	1.53%
Water	12	4.59%
Parcels With No Values	1	0.38%



- Acreage Not Zoned For Agriculture
- Agricultural
- Centrally Assessed
- Industrial
- Institutional
- Mining
- Other
- Public/Semi-Public
- Recreation
- Residential
- Retail/Office
- Row
- Vacant Residential
- Vacant Nonresidential
- Water
- Parcels With No Values

Location Maps



Community Facilities

The community facilities information below is useful in a variety of ways for environmental evaluations. These community resources should be evaluated for potential sociocultural effects, such as accessibility and relocation potential. The facility types may indicate the types of population groups present in the project study area. Facility staff and leaders can be sources of community information such as who uses the facility and how it is used. Additionally, community facilities are potential public meeting venues.

Community Boundaries (User defined)

Facility Name

West Boca Community Council

Fire Stations (Points)

Facility Name

PALM BEACH COUNTY FIRE DEPARTMENT AND
RESCUE STATION 51

Address

10050 JUDGE WINIKOFF RD

Zip Code

33428

Florida Parks and Recreational Facilities (Points)

Facility Name

WATERGATE PARK

Address

10537 SANDALFOOT BLVD

Zip Code

33428

Religious Centers (Points)

Facility Name

CALVARY CHAPEL WEST BOCA

Address

10660 SANDALFOOT BOULEVARD WEST

Zip Code

33428

US Census Places

Facility Name

Parkland

Watergate

Block Groups

The following Census Block Groups were used to calculate demographics for this report.

1990 Census Block Groups

120110105009, 120990077191, 120990077031, 120990077192

2000 Census Block Groups

120990077333, 120990077311, 120990077322, 120990077321, 120990077373

2010 Census Block Groups

120990077671, 120990077321, 120990077313, 120990077322, 120990077331, 120990077312, 120990077323

2017 Census Block Groups

120990077312, 120990077322, 120990077313, 120990077671, 120990077323, 120990077321, 120990077331

Data Sources

Area

The geographic area of the community based on a user-specified community boundary or area of interest (AOI) boundary.

Jurisdiction

Jurisdiction(s) includes local government boundaries that intersect the community or AOI boundary.

Demographic Data

Demographic data reported under the headings General Population Trends, Race and Ethnicity Trends, Age Trends, Income Trends, Educational Attainment Trends, Language Trends, and Housing Trends is from the U.S. Decennial Census (1990, 2000) and the American Community Survey (ACS) 5-year estimates from 2006-2010 and 2013-2017. The data was gathered at the block group level for user-specified community boundaries and AOIs, and at the county level for counties. Depending on the dataset, the data represents 100% counts (Census Summary File 1) or sample-based information (Census Summary File 3 or ACS).

About the Census Data:

User-specified community boundaries and AOIs do not always correspond precisely to block group boundaries. In these instances, adjustment of the geographic area and data for affected block groups is required to estimate the actual population. To improve the accuracy of such estimates in the SDR report, the census block group data was adjusted to exclude all census blocks with a population of two or fewer. These areas were eliminated from the corresponding years' block groups. Next, the portion of the block group that lies outside of the community or AOI boundary was removed. The demographics within each block group were then recalculated, assuming an equal area distribution of the population. Note that there may be areas where there is no population.

Use caution when comparing the 100% count data (Decennial Census) to the sample-based data (ACS). In any given year, about one in 40 or 2.5% of U.S. households will receive the ACS questionnaire. Over any five-year period, about one in eight households will receive the questionnaire, as compared to about one in six that received the long form questionnaire for the Decennial Census 2000. (Source: <http://mcdc.missouri.edu/pub/data/acs/Readme.shtml>) The U.S. Census Bureau provides help with this process:

<https://www.census.gov/programs-surveys/acs/guidance/comparing-acs-data/2017.html>

Use caution when interpreting changes in Race and Ethnicity over time. Starting with the 2000 Decennial Census, respondents were given a new option of selecting one or more race categories. Also in 2000, the placement of the question about Hispanic origin changed, helping to increase responsiveness to the Hispanic-origin question. Because of these and other changes, the 1990 data on race and ethnicity are not directly comparable with data from later censuses. (Source: <http://www.census.gov/prod/2001pubs/c2kbr01-1.pdf>; <http://www.census.gov/pred/www/rpts/Race%20and%20Ethnicity%20FINAL%20report.pdf>)

The "Minority" calculations are derived from Census and ACS data using both the race and ethnicity responses. On this report, "Minority" refers to individuals who list a race other than White and/or list their ethnicity as Hispanic/Latino. In other words, people who are multi-racial, any single race other than White, or Hispanic/Latino of any race are considered minorities.

Disability data is not included in the 2010 Decennial Census, or the 2006-2010 ACS. This data is available in the 2013-2017 ACS.

Because of changes made to the Census and ACS questions between 1990 and 2017, disability variables should not be compared from year to year. For example: 1) With the 1990 data the disabilities are listed as a "work disability" while this distinction is not made with 2000 or 2017 ACS data; 2) The 2017 ACS data includes the institutionalized population (e.g. persons in prisons and group homes), while this population is not included in 1990 or 2000; 3) the age groupings changed over the years.

Please take the following two concerns into account when viewing this data: 1) With the 1990 data the disabilities are listed as a "work disability" while this distinction is not made with 2000 or 2017 ACS data; 2) The 2017 ACS data includes the institutionalized population (e.g. persons in prisons and group homes), while this population is not included in 1990 or 2000.

The category Bachelor's Degree or Higher under the heading Educational Attainment Trends is a subset of the category High School Graduate or Higher.

Income of households. This includes the income of the householder and all other individuals 15 years old and over in the household, whether they are related to the householder or not. Because many households consist of only one person, average household income is usually less than average family income.

Income of families. In compiling statistics on family income, the incomes of all members 15 years old and over related to the householder are summed and treated as a single amount.

Age Trends median age for 1990 is not available.

Land Use Data

The Land Use information Indicates acreages and percentages for the generalized land use types used to group parcel-specific, existing land use assigned by the county property appraiser office according to the Florida Department of Revenue land use codes.

Community Facilities Data

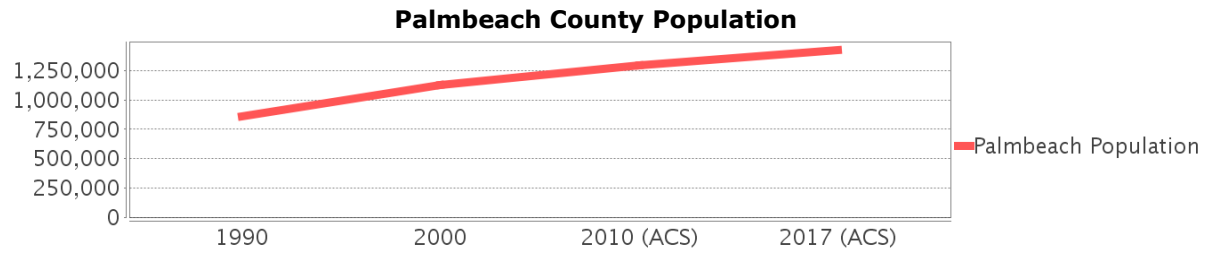
- Assisted Rental Housing Units - Identifies multifamily rental developments that receive funding assistance under federal, state, and local government programs to offer affordable housing as reported by the Shimberg Center for Housing Studies, University of Florida.
- Mobile Home Parks - Identifies approved or acknowledged mobile home parks reported by the Florida Department of Business and Professional Regulation and Florida Department of Health.
- Migrant Camps - Identifies migrant labor camp facilities inspected by the Florida Department of Health.
- Group Care Facilities - Identifies group care facilities inspected by the Florida Department of Health.

- Community Center and Fraternal Association Facilities - Identifies facilities reported by multiple sources.
- Law Enforcement Correctional Facilities - Identifies facilities reported by multiple sources.
- Cultural Centers - Identifies cultural centers including organizations, buildings, or complexes that promote culture and arts (e.g., aquariums and zoological facilities; arboreta and botanical gardens; dinner theaters; drive-ins; historical places and services; libraries; motion picture theaters; museums and art galleries; performing arts centers; performing arts theaters; planetariums; studios and art galleries; and theater producers stage facilities) reported by multiple sources.
- Fire Department and Rescue Station Facilities - Identifies facilities reported by multiple sources.
- Government Buildings - Identifies local, state, and federal government buildings reported by multiple sources.
- Health Care Facilities - Identifies health care facilities including abortion clinics, dialysis clinics, medical doctors, nursing homes, osteopaths, state laboratories/clinics, and surgicenters/walk-in clinics reported by the Florida Department of Health.
- Hospital Facilities - Identifies hospital facilities reported by multiple sources.
- Law Enforcement Facilities - Identifies law enforcement facilities reported by multiple sources.
- Parks and Recreational Facilities - Identifies parks and recreational facilities reported by multiple sources.
- Religious Center Facilities - Identifies religious centers including churches, temples, synagogues, mosques, chapels, centers, and other types of religious facilities reported by multiple sources.
- Private and Public Schools - Identifies private and public schools reported by multiple sources.
- Social Service Centers - Identifies social service centers reported by multiple sources.
- Veteran Organizations and Facilities

Palmbeach County Demographic Profile

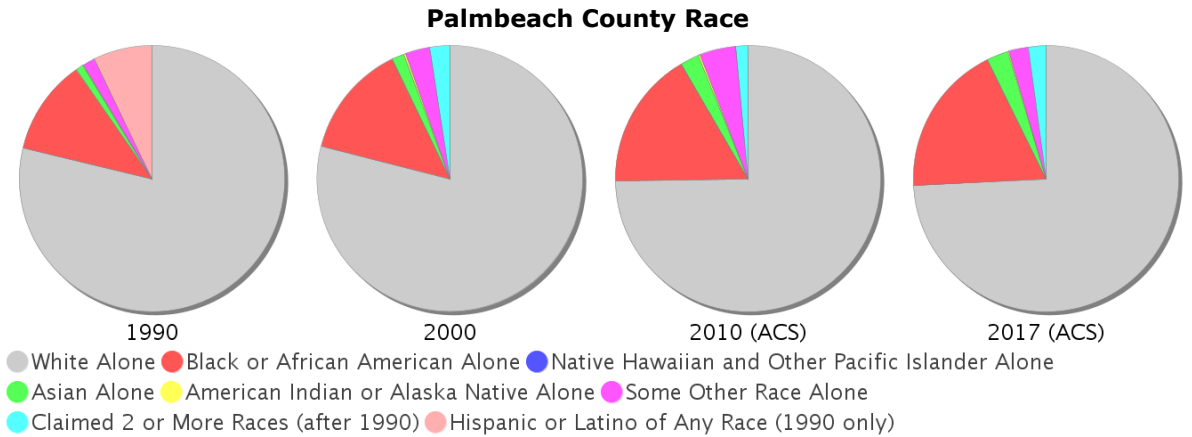
General Population Trends - Palmbeach

Description	1990	2000	2010 (ACS)	2017 (ACS)
Total Population	863,518	1,131,184	1,299,356	1,426,772
Total Households	365,558	474,175	523,150	543,591
Average Persons per Acre	0.608	0.797	0.917	1.006
Average Persons per Household	2.362	2.344	2.00	2.59
Average Persons per Family	2.874	2.966	3.158	3.358
Males	414,538	545,705	629,214	691,154
Females	448,980	585,479	670,142	735,618



Race and Ethnicity Trends - Palmbeach

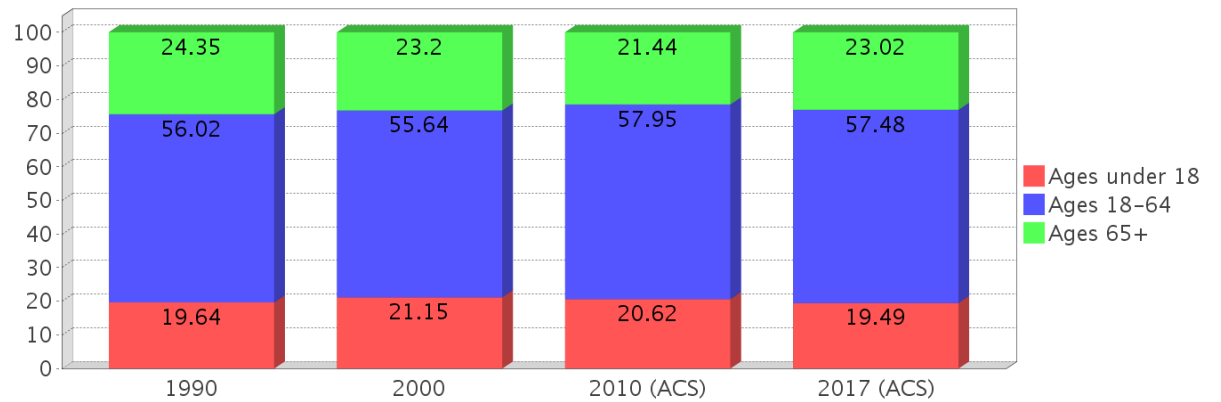
Description	1990	2000	2010 (ACS)	2017 (ACS)
White Alone	732,231 (84.80%)	893,242 (78.97%)	971,148 (74.74%)	1,058,016 (74.15%)
Black or African American Alone	107,705 (12.47%)	156,496 (13.83%)	218,649 (16.83%)	264,224 (18.52%)
Native Hawaiian and Other Pacific Islander Alone	(NA)	423 (0.04%)	674 (0.05%)	510 (0.04%)
Asian Alone	8,808 (1.02%)	16,895 (1.49%)	29,536 (2.27%)	37,232 (2.61%)
American Indian or Alaska Native Alone	1,211 (0.14%)	2,706 (0.24%)	2,772 (0.21%)	2,268 (0.16%)
Some Other Race Alone	13,351 (1.55%)	33,904 (3.00%)	57,740 (4.44%)	33,692 (2.36%)
Claimed 2 or More Races	(NA)	27,518 (2.43%)	18,837 (1.45%)	30,830 (2.16%)
Hispanic or Latino of Any Race	66,613 (7.71%)	140,568 (12.43%)	233,557 (17.97%)	304,210 (21.32%)
Not Hispanic or Latino	796,905 (92.29%)	990,616 (87.57%)	1,065,799 (82.03%)	1,122,562 (78.68%)
Minority	526,563 (60.98%)	332,431 (29.39%)	526,563 (40.52%)	627,754 (44.00%)



Age Trends - Palmbeach

Description	1990	2000	2010 (ACS)	2017 (ACS)
Under Age 5	6.16%	5.47%	5.45%	5.13%
Ages 5-17	13.47%	15.68%	15.17%	14.36%
Ages 18-21	4.12%	3.87%	4.67%	4.40%
Ages 22-29	11.02%	7.98%	8.71%	9.43%
Ages 30-39	15.44%	14.10%	11.76%	11.45%
Ages 40-49	11.46%	14.35%	14.24%	12.41%
Ages 50-64	13.98%	15.34%	18.57%	19.79%
Age 65 and Over	24.35%	23.20%	21.44%	23.02%
-Ages 65-74	13.47%	10.90%	9.57%	11.20%
-Ages 75-84	8.74%	9.19%	8.32%	7.78%
-Age 85 and Over	2.13%	3.11%	3.55%	4.05%
Median Age	NA	42	43	44

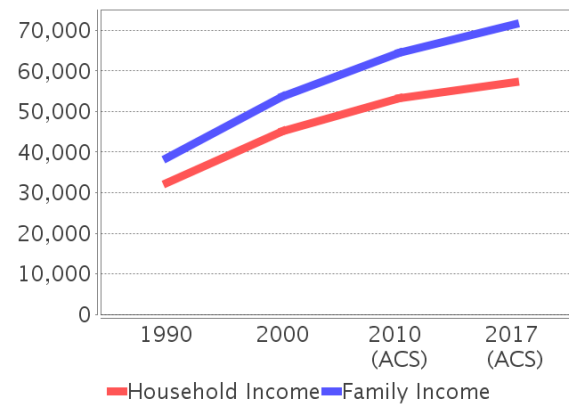
Percentage Population by Age Group - Palmbeach



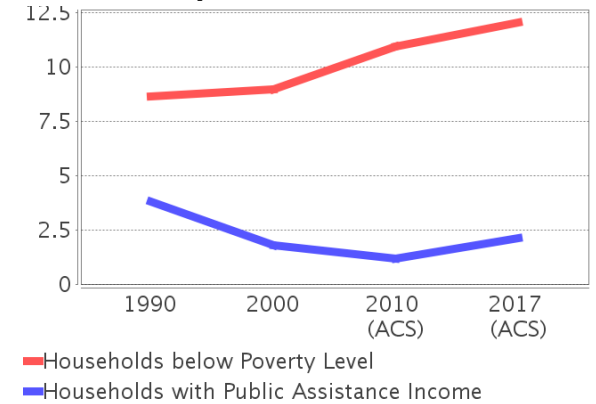
Income Trends - Palmbeach

Description	1990	2000	2010 (ACS)	2017 (ACS)
Median Household Income	\$32,524	\$45,062	\$53,242	\$57,256
Median Family Income	\$38,539	\$53,701	\$64,445	\$71,519
Population below Poverty Level	9.30%	9.92%	12.23%	13.44%
Households below Poverty Level	8.65%	8.96%	10.93%	12.04%
Households with Public Assistance Income	3.79%	1.79%	1.17%	2.13%

Income Trends



Poverty and Public Assistance



Disability Trends - Palmbeach

See the Data Sources section below for an explanation about the differences in disability data among the various years.

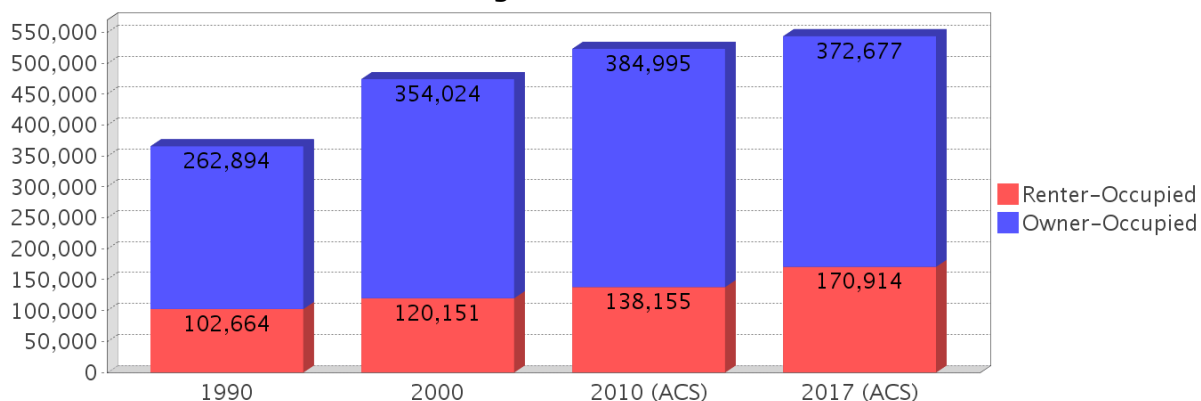
Description	1990	2000	2010 (ACS)	2017 (ACS)
Population 16 To 64 Years with a disability	34,925 (4.98%)	127,364 (12.05%)	NA (NA)	NA (NA)
Population 20 To 64 Years with a disability	NA (NA)	NA (NA)	NA (NA)	62,242 (7.97%)

Educational Attainment Trends - Palmbeach

Age 25 and Over

Description	1990	2000	2010 (ACS)	2017 (ACS)
Less than 9th Grade	47,090 (7.45%)	44,985 (5.50%)	53,438 (5.75%)	61,296 (5.91%)
9th to 12th Grade, No Diploma	86,989 (13.76%)	89,361 (10.93%)	68,923 (7.41%)	62,600 (6.04%)
High School Graduate or Higher	497,999 (78.79%)	683,553 (83.57%)	807,233 (86.84%)	913,254 (88.05%)
Bachelor's Degree or Higher	139,863 (22.13%)	226,615 (27.71%)	295,333 (31.77%)	360,746 (34.78%)

Housing Tenure - Palmbeach



Language Trends - Palmbeach

Age 5 and Over

Description	1990	2000	2010 (ACS)	2017 (ACS)
Speaks English Well	28,086 (3.47%)	51,028 (4.77%)	81,271 (6.62%)	85,315 (6.30%)
Speaks English Not Well	NA (NA)	37,764 (3.53%)	53,656 (4.37%)	63,968 (4.73%)
Speaks English Not at All	NA (NA)	15,032 (1.41%)	24,485 (1.99%)	26,786 (1.98%)
Speaks English Not Well or Not at All	23,068 (2.85%)	52,796 (4.94%)	78,141 (6.36%)	90,754 (6.71%)

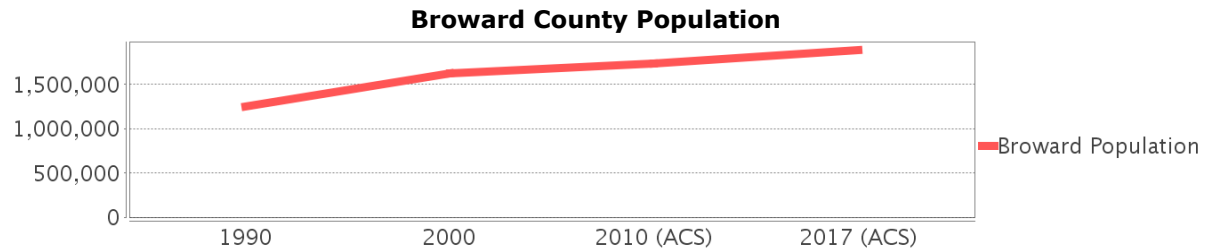
Housing Trends - Palmbeach

Description	1990	2000	2010 (ACS)	2017 (ACS)
Total	461,665	556,428	657,106	678,673
Units per Acre	0.325	0.392	0.464	0.479
Single-Family Units	198,763	307,104	367,698	381,098
Multi-Family Units	147,309	228,687	269,970	277,815
Mobile Home Units	15,917	20,083	19,071	19,486
Owner-Occupied Units	262,894	354,024	384,995	372,677
Renter-Occupied Units	102,664	120,151	138,155	170,914
Vacant Units	96,107	82,253	133,956	135,082
Median Housing Value	\$98,100	\$115,000	\$261,900	\$242,500
Occupied Housing Units w/No Vehicle	29,875 (8.17%)	37,659 (7.94%)	32,330 (6.18%)	34,649 (6.37%)

Broward County Demographic Profile

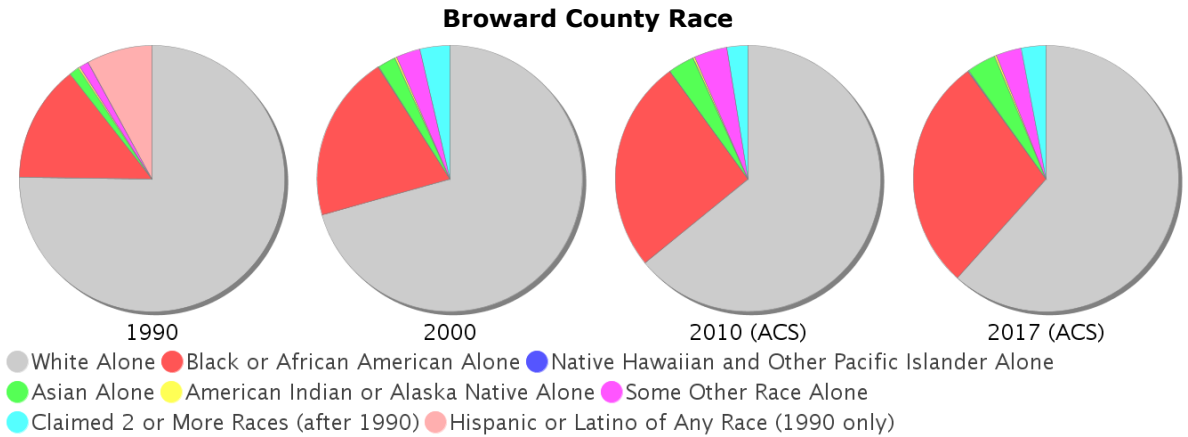
General Population Trends - Broward

Description	1990	2000	2010 (ACS)	2017 (ACS)
Total Population	1,255,488	1,623,018	1,734,139	1,890,416
Total Households	528,442	654,445	668,898	675,828
Average Persons per Acre	1.606	2.08	2.217	2.417
Average Persons per Household	2.376	2.448	3.00	2.77
Average Persons per Family	2.987	3.153	3.325	3.585
Males	601,177	782,611	840,414	920,265
Females	654,311	840,407	893,725	970,151



Race and Ethnicity Trends - Broward

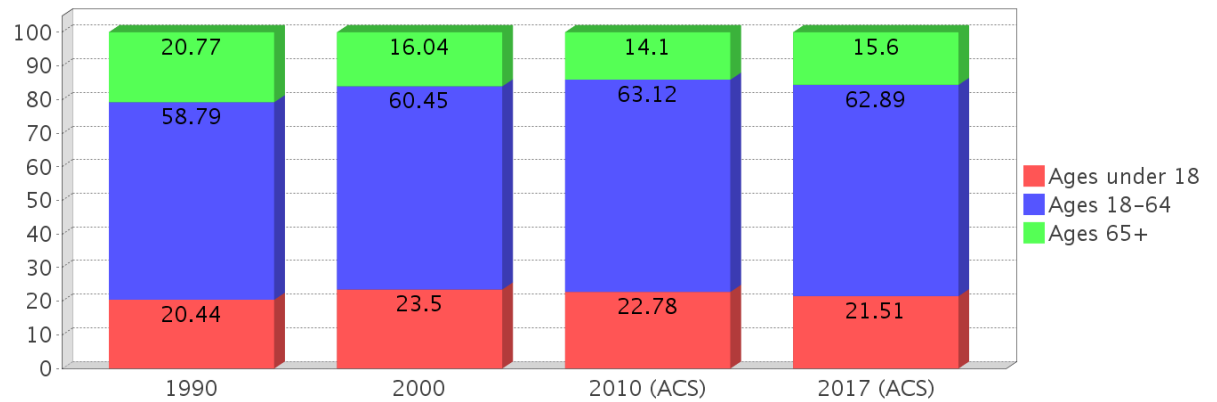
Description	1990	2000	2010 (ACS)	2017 (ACS)
White Alone	1,025,583 (81.69%)	1,145,656 (70.59%)	1,111,680 (64.11%)	1,165,004 (61.63%)
Black or African American Alone	193,447 (15.41%)	329,749 (20.32%)	448,777 (25.88%)	536,589 (28.38%)
Native Hawaiian and Other Pacific Islander Alone	(NA)	645 (0.04%)	574 (0.03%)	1,102 (0.06%)
Asian Alone	16,757 (1.33%)	36,505 (2.25%)	55,794 (3.22%)	67,822 (3.59%)
American Indian or Alaska Native Alone	2,634 (0.21%)	3,962 (0.24%)	3,235 (0.19%)	5,050 (0.27%)
Some Other Race Alone	16,694 (1.33%)	47,617 (2.93%)	70,324 (4.06%)	57,417 (3.04%)
Claimed 2 or More Races	(NA)	58,884 (3.63%)	43,755 (2.52%)	57,432 (3.04%)
Hispanic or Latino of Any Race	108,439 (8.64%)	271,523 (16.73%)	415,627 (23.97%)	535,987 (28.35%)
Not Hispanic or Latino	1,147,049 (91.36%)	1,351,495 (83.27%)	1,318,512 (76.03%)	1,354,429 (71.65%)
Minority	987,249 (78.63%)	682,326 (42.04%)	987,249 (56.93%)	1,169,175 (61.85%)



Age Trends - Broward

Description	1990	2000	2010 (ACS)	2017 (ACS)
Under Age 5	6.29%	6.30%	6.06%	5.84%
Ages 5-17	14.15%	17.21%	16.73%	15.67%
Ages 18-21	4.37%	4.01%	4.80%	4.54%
Ages 22-29	12.16%	9.58%	10.00%	10.47%
Ages 30-39	16.60%	16.74%	13.60%	13.38%
Ages 40-49	12.52%	15.73%	16.16%	14.00%
Ages 50-64	13.14%	14.39%	18.57%	20.49%
Age 65 and Over	20.77%	16.04%	14.10%	15.60%
-Ages 65-74	10.63%	7.19%	6.80%	8.61%
-Ages 75-84	8.15%	6.24%	4.87%	4.66%
-Age 85 and Over	1.99%	2.62%	2.43%	2.34%
Median Age	NA	38	39	40

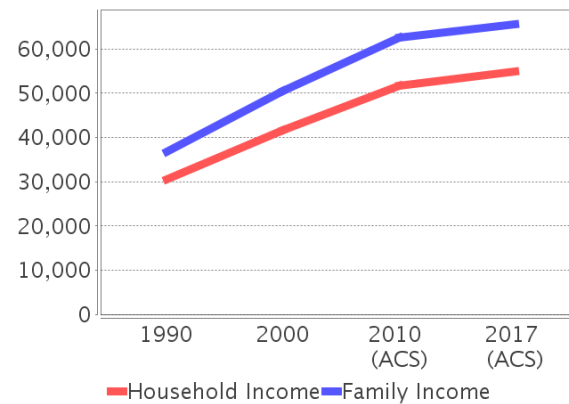
Percentage Population by Age Group - Broward



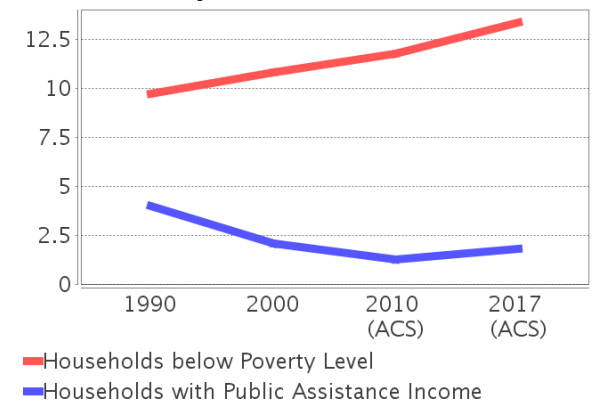
Income Trends - Broward

Description	1990	2000	2010 (ACS)	2017 (ACS)
Median Household Income	\$30,571	\$41,691	\$51,694	\$54,895
Median Family Income	\$36,801	\$50,531	\$62,619	\$65,596
Population below Poverty Level	10.19%	11.51%	12.28%	14.00%
Households below Poverty Level	9.72%	10.80%	11.77%	13.34%
Households with Public Assistance Income	3.97%	2.07%	1.28%	1.83%

Income Trends



Poverty and Public Assistance



Disability Trends - Broward

See the Data Sources section below for an explanation about the differences in disability data among the various years.

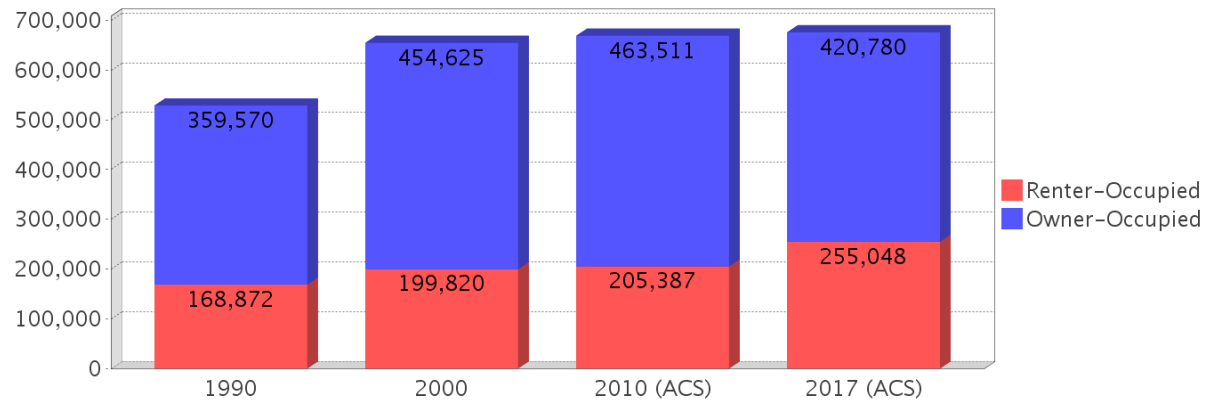
Description	1990	2000	2010 (ACS)	2017 (ACS)
Population 16 To 64 Years with a disability	54,712 (5.40%)	194,881 (12.94%)	NA (NA)	NA (NA)
Population 20 To 64 Years with a disability	NA (NA)	NA (NA)	NA (NA)	90,981 (7.98%)

Educational Attainment Trends - Broward

Age 25 and Over

Description	1990	2000	2010 (ACS)	2017 (ACS)
Less than 9th Grade	66,349 (7.38%)	61,183 (5.43%)	59,492 (4.98%)	66,008 (4.97%)
9th to 12th Grade, No Diploma	141,784 (15.77%)	142,051 (12.61%)	94,852 (7.94%)	85,301 (6.43%)
High School Graduate or Higher	690,696 (76.84%)	923,268 (81.96%)	1,040,419 (87.08%)	1,175,864 (88.60%)
Bachelor's Degree or Higher	168,799 (18.78%)	276,527 (24.55%)	353,884 (29.62%)	417,852 (31.48%)

Housing Tenure - Broward



Language Trends - Broward

Age 5 and Over

Description	1990	2000	2010 (ACS)	2017 (ACS)
Speaks English Well	47,912 (4.07%)	95,561 (6.28%)	123,453 (7.58%)	147,751 (8.30%)
Speaks English Not Well	NA	59,953 (3.94%)	83,745 (5.14%)	95,198 (5.35%)
Speaks English Not at All	NA	17,811 (1.17%)	34,170 (2.10%)	40,264 (2.26%)
Speaks English Not Well or Not at All	32,782 (2.79%)	77,764 (5.11%)	117,915 (7.24%)	135,462 (7.61%)

Housing Trends - Broward

Description	1990	2000	2010 (ACS)	2017 (ACS)
Total	628,660	741,043	806,858	818,382
Units per Acre	0.804	0.95	1.031	1.046
Single-Family Units	257,272	360,764	392,858	407,910
Multi-Family Units	246,239	352,349	390,365	387,159
Mobile Home Units	19,992	26,834	23,136	22,746
Owner-Occupied Units	359,570	454,625	463,511	420,780
Renter-Occupied Units	168,872	199,820	205,387	255,048
Vacant Units	100,218	86,598	137,960	142,554
Median Housing Value	\$91,300	\$102,800	\$247,500	\$223,400
Occupied Housing Units w/No Vehicle	54,467 (10.31%)	61,191 (9.35%)	47,710 (7.13%)	49,237 (7.29%)

County Data Sources

Demographic data reported is from the U.S. Decennial Census (1990, 2000) and the American Community Survey (ACS) 5-year estimates from 2006-2010 and 2013-2017. The data was gathered at the county level. Depending on the dataset, the data represents 100% counts (Census Summary File 1) or sample-based information (Census Summary File 3 or ACS).

About the Census Data:

Use caution when comparing the 100% count data (Decennial Census) to the sample-based data (ACS). In any given year, about one in 40 or 2.5% of U.S. households will receive the ACS questionnaire. Over any five-year period, about one in eight households will receive the questionnaire, as compared to about one in six that received the long form questionnaire for the Decennial Census 2000. (Source: <http://mcdc.missouri.edu/pub/data/acs/Readme.shtml>) The U.S. Census Bureau provides help with this process:

<https://www.census.gov/programs-surveys/acs/guidance/comparing-acs-data/2017.html>

Use caution when interpreting changes in Race and Ethnicity over time. Starting with the 2000 Decennial Census, respondents were given a new option of selecting one or more race categories. Also in 2000, the placement of the question about Hispanic origin changed, helping to increase responsiveness to the Hispanic-origin question. Because of these and other changes, the 1990 data on race and ethnicity are not directly comparable with data from later censuses. (Source: <http://www.census.gov/prod/2001pubs/c2kbr01-1.pdf>; <http://www.census.gov/pred/www/rpts/Race%20and%20Ethnicity%20FINAL%20report.pdf>)

The "Minority" calculations are derived from Census and ACS data using both the race and ethnicity responses. On this report, "Minority" refers to individuals who list a race other than White and/or list their ethnicity as Hispanic/Latino. In other words, people who are multi-racial, any single race other than White, or Hispanic/Latino of any race are considered minorities.

Disability data is not included in the 2010 Decennial Census, or the 2006-2010 ACS. This data is available in the 2013-2017 ACS.

Because of changes made to the Census and ACS questions between 1990 and 2017, disability variables should not be compared from year to year. For example: 1) With the 1990 data the disabilities are listed as a "work disability" while this distinction is not made with 2000 or 2017 ACS data; 2) The 2017 ACS data includes the institutionalized population (e.g. persons in prisons and group homes), while this population is not included in 1990 or 2000; 3) the age groupings changed over the years.

Please take the following two concerns into account when viewing this data: 1) With the 1990 data the disabilities are listed as a "work disability" while this distinction is not made with 2000 or 2017 ACS data; 2) The 2017 ACS data includes the institutionalized population (e.g. persons in prisons and group homes), while this population is not included in 1990 or 2000.

source:

<https://www.census.gov/people/disability/methodology/acs.html>

<https://www.census.gov/population/www/cen2000/90vs00/index.html>

The category Bachelor's Degree or Higher under the heading Educational Attainment Trends is a subset of the category High School Graduate or Higher.

Metadata

- Community and Fraternal Centers https://etdmpub.florida-etat.org/metadata/gc_communitycenter.htm
- Correctional Facilities in Florida https://etdmpub.florida-etat.org/metadata/gc_correctional.htm
- Cultural Centers in Florida https://etdmpub.florida-etat.org/metadata/gc_culturecenter.htm
- Fire Department and Rescue Station Facilities in Florida https://etdmpub.florida-etat.org/metadata/gc_firestat.htm
- Local, State, and Federal Government Buildings in Florida https://etdmpub.florida-etat.org/metadata/gc_govbuild.htm
- Florida Health Care Facilities https://etdmpub.florida-etat.org/metadata/gc_health.htm
- Hospital Facilities in Florida https://etdmpub.florida-etat.org/metadata/gc_hospitals.htm
- Law Enforcement Facilities in Florida https://etdmpub.florida-etat.org/metadata/gc_lawenforce.htm
- Florida Parks and Recreational Facilities https://etdmpub.florida-etat.org/metadata/gc_parks.htm
- Religious Centers https://etdmpub.florida-etat.org/metadata/gc_religion.htm
- Florida Public and Private Schools https://etdmpub.florida-etat.org/metadata/gc_schools.htm
- Social Service Centers https://etdmpub.florida-etat.org/metadata/gc_socialservice.htm
- Assisted Rental Housing Units in Florida https://etdmpub.florida-etat.org/metadata/gc_assisted_housing.htm
- Group Care Facilities <https://etdmpub.florida-etat.org/metadata/groupcare.htm>
- Mobile Home Parks in Florida https://etdmpub.florida-etat.org/metadata/gc_mobilehomes.htm
- Migrant Camps in Florida <https://etdmpub.florida-etat.org/metadata/migrant.htm>
- Veteran Organizations and Facilities https://etdmpub.florida-etat.org/metadata/gc_veterans.htm
- Generalized Land Use - Florida DOT District 4 https://etdmpub.florida-etat.org/metadata/d4_lu_gen.htm
- Census Block Groups in Florida https://etdmpub.florida-etat.org/metadata/e2_cenacs_cci.htm
- 1990 Census Block Groups in Florida https://etdmpub.florida-etat.org/metadata/e2_cenblkgrp_1990_cci.htm
- 2000 Census Block Groups in Florida https://etdmpub.florida-etat.org/metadata/e2_cenblkgrp_2000_cci.htm
- 2010 Census Block Groups in Florida https://etdmpub.florida-etat.org/metadata/e2_cenblkgrp_2010_cci.htm