

Sociocultural Data Report

Windsor

Area: 0.876 square miles
Jurisdiction(s): **Cities:** Orchid
Counties: Indian River

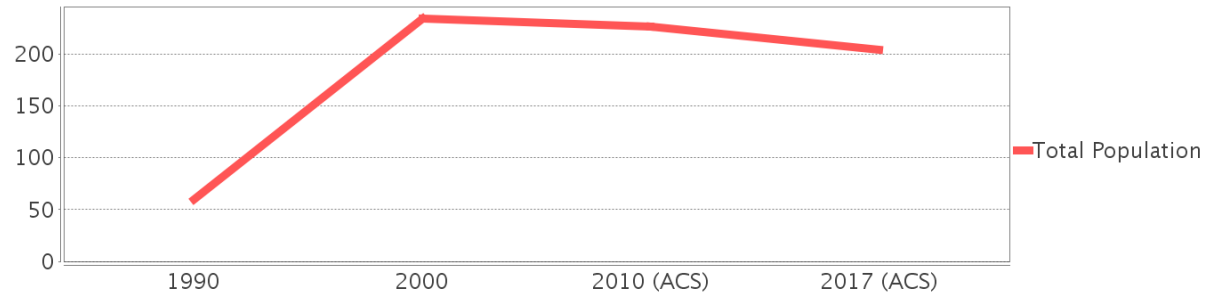
General Population Trends

Description	1990	2000	2010 (ACS)	2017 (ACS)
Total Population	60	234	226	204
Total Households	26	114	113	97
Average Persons per Acre	0.30	0.49	0.53	0.48
Average Persons per Household	2.30	2.20	2.00	2.09
Average Persons per Family	2.59	2.54	2.00	2.33
Males	30	123	109	107
Females	31	111	117	96

Race and Ethnicity Trends

Description	1990	2000	2010 (ACS)	2017 (ACS)
White Alone	60 (100.00%)	231 (98.72%)	222 (98.23%)	201 (98.53%)
Black or African American Alone	0 (0.00%)	0 (0.00%)	0 (0.00%)	1 (0.49%)
Native Hawaiian and Other Pacific Islander Alone	0 (0.00%)	0 (0.00%)	0 (0.00%)	0 (0.00%)
Asian Alone	0 (0.00%)	0 (0.00%)	1 (0.44%)	1 (0.49%)
American Indian or Alaska Native Alone	0 (0.00%)	0 (0.00%)	0 (0.00%)	0 (0.00%)
Some Other Race Alone	0 (0.00%)	0 (0.00%)	0 (0.00%)	0 (0.00%)
Claimed 2 or More Races	NA (NA)	2 (0.85%)	2 (0.88%)	0 (0.00%)
Hispanic or Latino of Any Race	0 (0.00%)	2 (0.85%)	4 (1.77%)	11 (5.39%)
Not Hispanic or Latino	60 (100.00%)	232 (99.15%)	222 (98.23%)	193 (94.61%)
Minority	1 (1.67%)	4 (1.71%)	7 (3.10%)	14 (6.86%)

Population

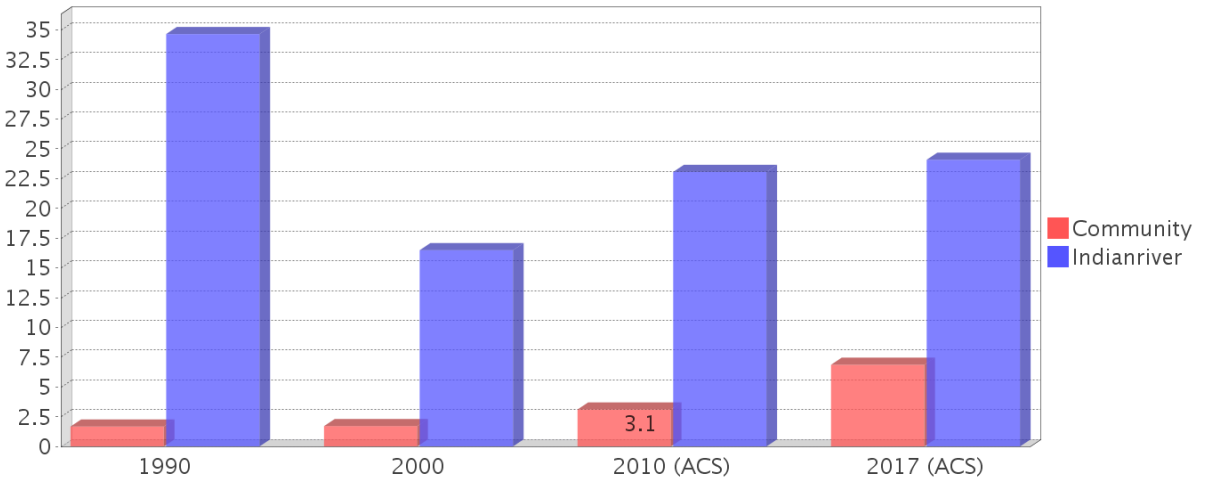


Race



● White Alone
 ● Black or African American Alone
 ● Native Hawaiian and Other Pacific Islander Alone
 ● Asian Alone
 ● American Indian or Alaska Native Alone
 ● Some Other Race Alone
 ● Claimed 2 or More Races (after 1990)
 ● Hispanic or Latino of Any Race (1990 only)

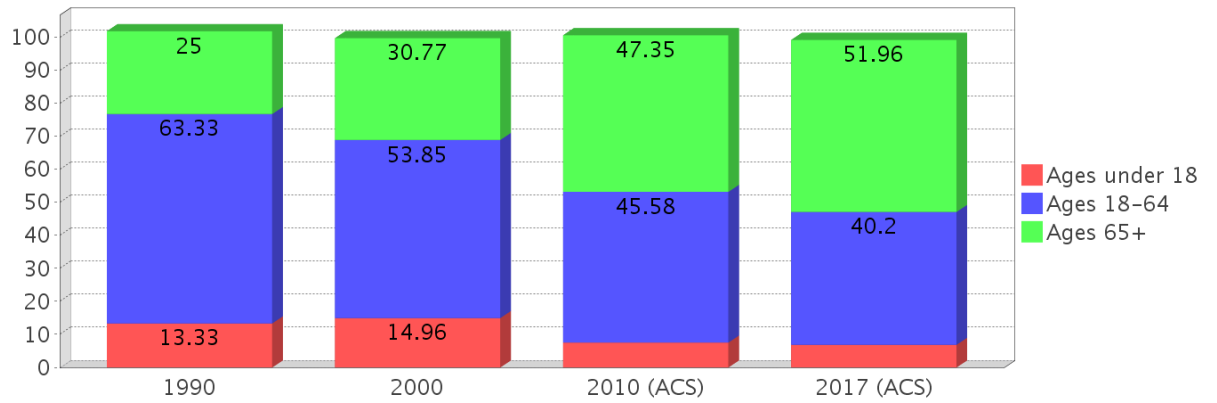
Minority Percentage Population



Age Trends

Description	1990	2000	2010 (ACS)	2017 (ACS)
Under Age 5	5.00%	4.27%	0.88%	0.00%
Ages 5-17	8.33%	10.68%	6.64%	6.86%
Ages 18-21	1.67%	0.85%	0.88%	0.98%
Ages 22-29	6.67%	2.14%	1.33%	5.88%
Ages 30-39	15.00%	5.13%	2.21%	0.00%
Ages 40-49	16.67%	14.10%	7.96%	3.92%
Ages 50-64	23.33%	31.62%	33.19%	29.41%
Age 65 and Over	25.00%	30.77%	47.35%	51.96%
-Ages 65-74	16.67%	22.22%	30.09%	31.86%
-Ages 75-84	6.67%	8.12%	14.16%	16.18%
-Age 85 and Over	1.67%	0.43%	3.10%	4.41%
Median Age	NA	52	64	66

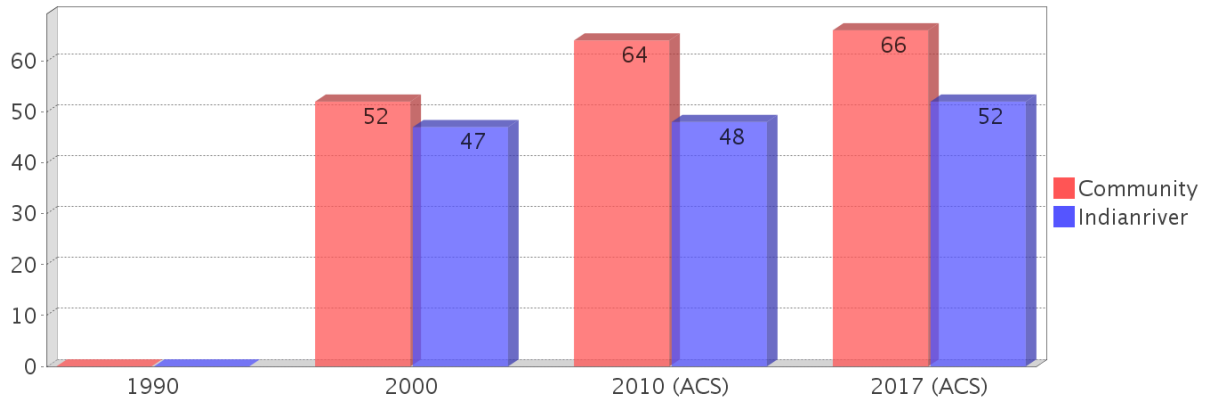
Percentage Population by Age Group



Income Trends

Description	1990	2000	2010 (ACS)	2017 (ACS)
Median Household Income	\$33,500	\$61,750	\$124,063	\$104,286
Median Family Income	\$35,000	\$70,417	\$162,308	\$138,750
Population below Poverty Level	11.67%	0.00%	12.83%	7.35%
Households below Poverty Level	15.38%	0.00%	7.96%	9.28%
Households with Public Assistance Income	3.85%	1.75%	0.00%	0.00%

Median Age Comparison

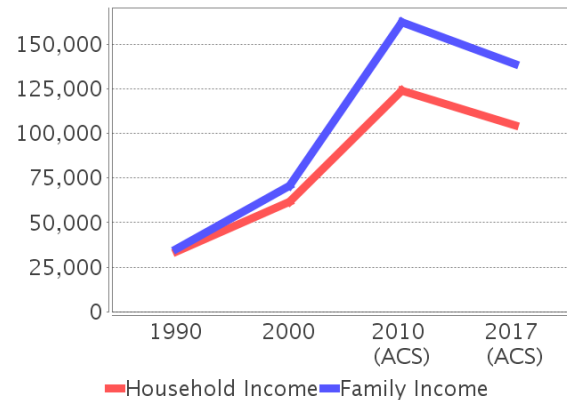


Disability Trends

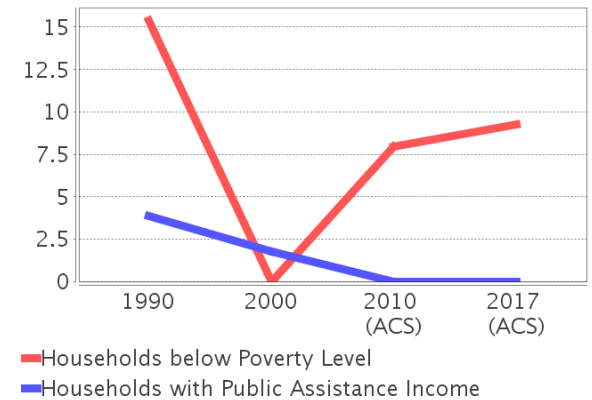
See the Data Sources section below for an explanation about the differences in disability data among the various years.

Description	1990	2000	2010 (ACS)	2017 (ACS)
Population 16 To 64 Years with a disability	4 (7.55%)	8 (3.57%)	(NA)	(NA)
Population 20 To 64 Years with a disability	(NA)	(NA)	(NA)	4 (4.94%)

Income Trends



Poverty and Public Assistance



Educational Attainment Trends

Age 25 and Over

Description	1990	2000	2010 (ACS)	2017 (ACS)
Less than 9th Grade	0 (0.00%)	1 (0.52%)	0 (0.00%)	0 (0.00%)
9th to 12th Grade, No Diploma	3 (6.12%)	6 (3.12%)	5 (2.91%)	3 (1.67%)
High School Graduate or Higher	46 (93.88%)	186 (96.88%)	167 (97.09%)	178 (98.89%)
Bachelor's Degree or Higher	12 (24.49%)	114 (59.38%)	106 (61.63%)	115 (63.89%)

Language Trends

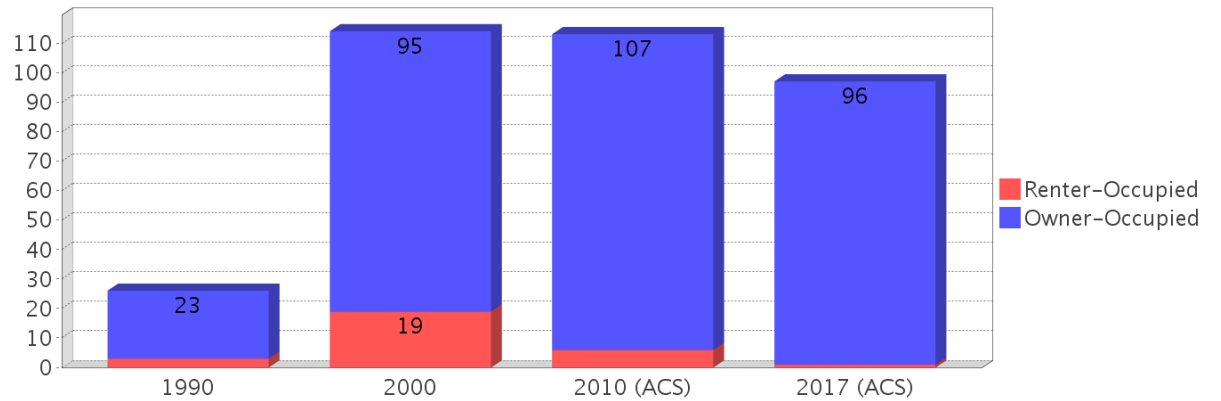
Age 5 and Over

Description	1990	2000	2010 (ACS)	2017 (ACS)
Speaks English Well	0 (0.00%)	0 (0.00%)	0 (0.00%)	0 (0.00%)
Speaks English Not Well	NA (NA)	0 (0.00%)	0 (0.00%)	0 (0.00%)
Speaks English Not at All	NA (NA)	0 (0.00%)	0 (0.00%)	0 (0.00%)
Speaks English Not Well or Not at All	0 (0.00%)	0 (0.00%)	0 (0.00%)	0 (0.00%)

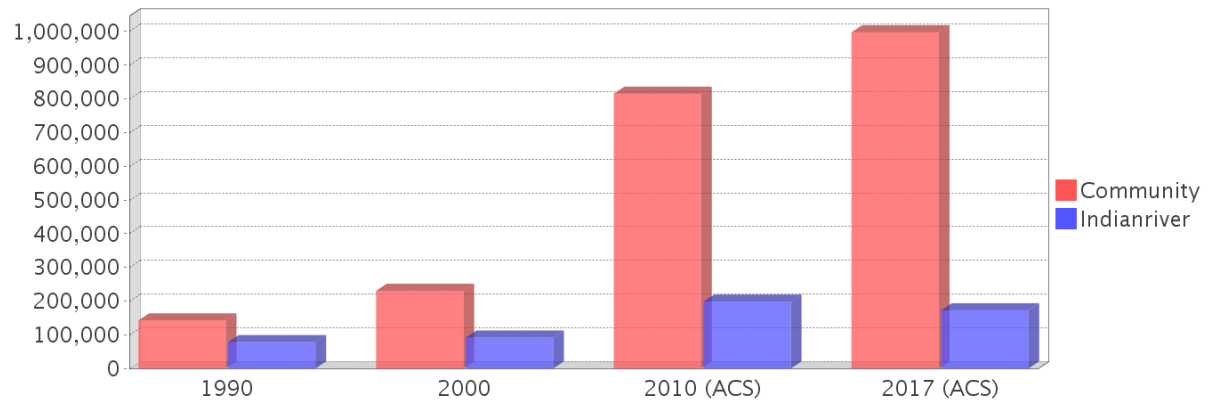
Housing Trends

Description	1990	2000	2010 (ACS)	2017 (ACS)
Total	39	181	177	184
Units per Acre	0.20	0.38	0.42	0.43
Single-Family Units	25	162	174	169
Multi-Family Units	1	19	7	15
Mobile Home Units	0	0	4	0
Owner-Occupied Units	23	95	107	96
Renter-Occupied Units	3	19	6	1
Vacant Units	13	67	65	87
Median Housing Value	\$142,400	\$230,200	\$815,200	\$997,700
Occupied Housing Units w/No Vehicle	0 (0.00%)	5 (4.39%)	1 (0.89%)	0 (0.00%)

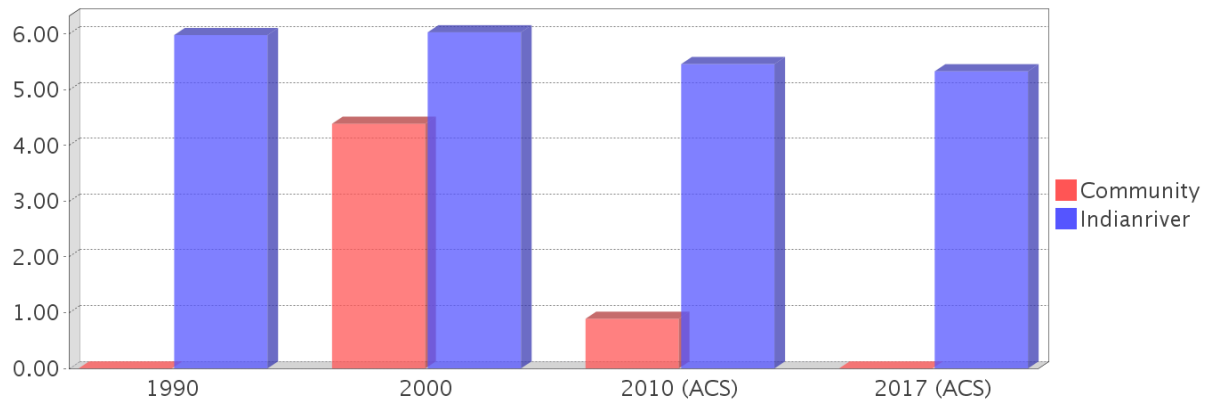
Housing Tenure



Median Housing Value Comparison

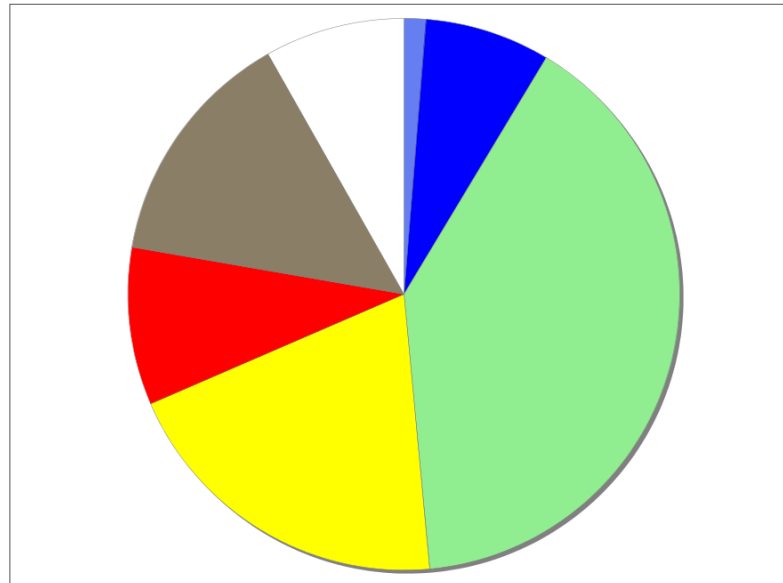


Occupied Units With No Vehicles Available



Existing Land Use

Land Use Type	Acres	Percentage
Acreage Not Zoned For Agriculture	0	0.00%
Agricultural	0	0.00%
Centrally Assessed	0	0.00%
Industrial	0	0.00%
Institutional	6	1.07%
Mining	0	0.00%
Other	0	0.00%
Public/Semi-Public	35	6.24%
Recreation	190	33.90%
Residential	95	16.95%
Retail/Office	44	7.85%
Row	<0.5	<0.09%
Vacant Residential	67	11.95%
Vacant Nonresidential	0	0.00%
Water	0	0.00%
Parcels With No Values	39	6.96%



- Acreage Not Zoned For Agriculture
- Agricultural
- Centrally Assessed
- Industrial
- Institutional
- Mining
- Other
- Public/Semi-Public
- Recreation
- Residential
- Retail/Office
- Row
- Vacant Residential
- Vacant Nonresidential
- Water
- Parcels With No Values

Location Maps



Community Facilities

The community facilities information below is useful in a variety of ways for environmental evaluations. These community resources should be evaluated for potential sociocultural effects, such as accessibility and relocation potential. The facility types may indicate the types of population groups present in the project study area. Facility staff and leaders can be sources of community information such as who uses the facility and how it is used. Additionally, community facilities are potential public meeting venues.

Community Boundaries (User defined)

Facility Name

Orchid
Ambersand Beach
Goldensands Beach
Windsor

Cultural Centers (Points)

Facility Name

Address

Zip Code

THE GALLERY AT WINDSOR	3125 WINDSOR BLVD	32963
------------------------	-------------------	-------

Florida Parks and Recreational Facilities (Points)

Facility Name

Address

Zip Code

GOLDEN SANDS PARK	10240 HIGHWAY A1A	32963
-------------------	-------------------	-------

US Census Places

Facility Name

Windsor
Orchid

Block Groups

The following Census Block Groups were used to calculate demographics for this report.

1990 Census Block Groups

120610505011

2000 Census Block Groups

120610505011

2010 Census Block Groups

120610505012

2017 Census Block Groups

120610505012

Data Sources

Area

The geographic area of the community based on a user-specified community boundary or area of interest (AOI) boundary.

Jurisdiction

Jurisdiction(s) includes local government boundaries that intersect the community or AOI boundary.

Demographic Data

Demographic data reported under the headings General Population Trends, Race and Ethnicity Trends, Age Trends, Income Trends, Educational Attainment Trends, Language Trends, and Housing Trends is from the U.S. Decennial Census (1990, 2000) and the American Community Survey (ACS) 5-year estimates from 2006-2010 and 2013-2017. The data was gathered at the block group level for user-specified community boundaries and AOIs, and at the county level for counties. Depending on the dataset, the data represents 100% counts (Census Summary File 1) or sample-based information (Census Summary File 3 or ACS).

About the Census Data:

User-specified community boundaries and AOIs do not always correspond precisely to block group boundaries. In these instances, adjustment of the geographic area and data for affected block groups is required to estimate the actual population. To improve the accuracy of such estimates in the SDR report, the census block group data was adjusted to exclude all census blocks with a population of two or fewer. These areas were eliminated from the corresponding years' block groups. Next, the portion of the block group that lies outside of the community or AOI boundary was removed. The demographics within each block group were then recalculated, assuming an equal area distribution of the population. Note that there may be areas where there is no population.

Use caution when comparing the 100% count data (Decennial Census) to the sample-based data (ACS). In any given year, about one in 40 or 2.5% of U.S. households will receive the ACS questionnaire. Over any five-year period, about one in eight households will receive the questionnaire, as compared to about one in six that received the long form questionnaire for the Decennial Census 2000. (Source: <http://mcdc.missouri.edu/pub/data/acs/Readme.shtml>) The U.S. Census Bureau provides help with this process:

<https://www.census.gov/programs-surveys/acs/guidance/comparing-acs-data/2017.html>

Use caution when interpreting changes in Race and Ethnicity over time. Starting with the 2000 Decennial Census, respondents were given a new option of selecting one or more race categories. Also in 2000, the placement of the question about Hispanic origin changed, helping to increase responsiveness to the Hispanic-origin question. Because of these and other changes, the 1990 data on race and ethnicity are not directly comparable with data from later censuses. (Source: <http://www.census.gov/prod/2001pubs/c2kbr01-1.pdf>; <http://www.census.gov/pred/www/rpts/Race%20and%20Ethnicity%20FINAL%20report.pdf>)

The "Minority" calculations are derived from Census and ACS data using both the race and ethnicity responses. On this report, "Minority" refers to individuals who list a race other than White and/or list their ethnicity as Hispanic/Latino. In other words, people who are multi-racial, any single race other than White, or Hispanic/Latino of any race are considered minorities.

Disability data is not included in the 2010 Decennial Census, or the 2006-2010 ACS. This data is available in the 2013-2017 ACS.

Because of changes made to the Census and ACS questions between 1990 and 2017, disability variables should not be compared from year to year. For example: 1) With the 1990 data the disabilities are listed as a "work disability" while this distinction is not made with 2000 or 2017 ACS data; 2) The 2017 ACS data includes the institutionalized population (e.g. persons in prisons and group homes), while this population is not included in 1990 or 2000; 3) the age groupings changed over the years.

Please take the following two concerns into account when viewing this data: 1) With the 1990 data the disabilities are listed as a "work disability" while this distinction is not made with 2000 or 2017 ACS data; 2) The 2017 ACS data includes the institutionalized population (e.g. persons in prisons and group homes), while this population is not included in 1990 or 2000.

The category Bachelor's Degree or Higher under the heading Educational Attainment Trends is a subset of the category High School Graduate or Higher.

Income of households. This includes the income of the householder and all other individuals 15 years old and over in the household, whether they are related to the householder or not. Because many households consist of only one person, average household income is usually less than average family income.

Income of families. In compiling statistics on family income, the incomes of all members 15 years old and over related to the householder are summed and treated as a single amount.

Age Trends median age for 1990 is not available.

Land Use Data

The Land Use information Indicates acreages and percentages for the generalized land use types used to group parcel-specific, existing land use assigned by the county property appraiser office according to the Florida Department of Revenue land use codes.

Community Facilities Data

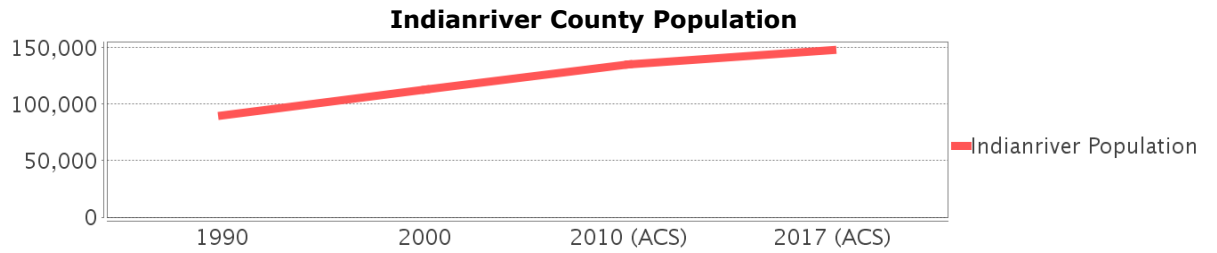
- Assisted Rental Housing Units - Identifies multifamily rental developments that receive funding assistance under federal, state, and local government programs to offer affordable housing as reported by the Shimberg Center for Housing Studies, University of Florida.
- Mobile Home Parks - Identifies approved or acknowledged mobile home parks reported by the Florida Department of Business and Professional Regulation and Florida Department of Health.
- Migrant Camps - Identifies migrant labor camp facilities inspected by the Florida Department of Health.
- Group Care Facilities - Identifies group care facilities inspected by the Florida Department of Health.

- Community Center and Fraternal Association Facilities - Identifies facilities reported by multiple sources.
- Law Enforcement Correctional Facilities - Identifies facilities reported by multiple sources.
- Cultural Centers - Identifies cultural centers including organizations, buildings, or complexes that promote culture and arts (e.g., aquariums and zoological facilities; arboreta and botanical gardens; dinner theaters; drive-ins; historical places and services; libraries; motion picture theaters; museums and art galleries; performing arts centers; performing arts theaters; planetariums; studios and art galleries; and theater producers stage facilities) reported by multiple sources.
- Fire Department and Rescue Station Facilities - Identifies facilities reported by multiple sources.
- Government Buildings - Identifies local, state, and federal government buildings reported by multiple sources.
- Health Care Facilities - Identifies health care facilities including abortion clinics, dialysis clinics, medical doctors, nursing homes, osteopaths, state laboratories/clinics, and surgicenters/walk-in clinics reported by the Florida Department of Health.
- Hospital Facilities - Identifies hospital facilities reported by multiple sources.
- Law Enforcement Facilities - Identifies law enforcement facilities reported by multiple sources.
- Parks and Recreational Facilities - Identifies parks and recreational facilities reported by multiple sources.
- Religious Center Facilities - Identifies religious centers including churches, temples, synagogues, mosques, chapels, centers, and other types of religious facilities reported by multiple sources.
- Private and Public Schools - Identifies private and public schools reported by multiple sources.
- Social Service Centers - Identifies social service centers reported by multiple sources.
- Veteran Organizations and Facilities

Indianriver County Demographic Profile

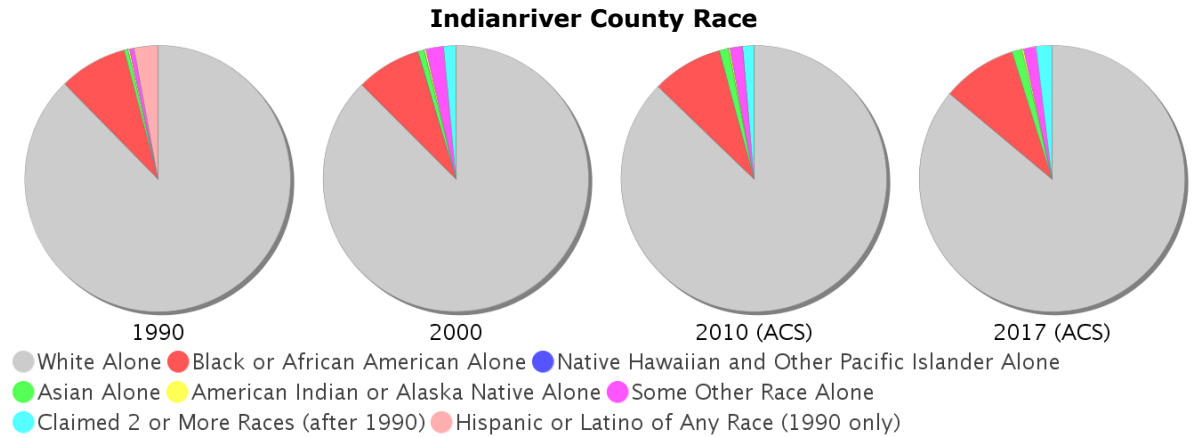
General Population Trends - Indianriver

Description	1990	2000	2010 (ACS)	2017 (ACS)
Total Population	90,208	112,947	135,518	147,981
Total Households	38,057	49,137	57,560	57,911
Average Persons per Acre	0.274	0.343	0.411	0.449
Average Persons per Household	2.37	2.249	2.00	2.53
Average Persons per Family	2.784	2.782	2.931	3.252
Males	43,578	54,594	65,606	71,064
Females	46,630	58,353	69,912	76,917



Race and Ethnicity Trends - Indianriver

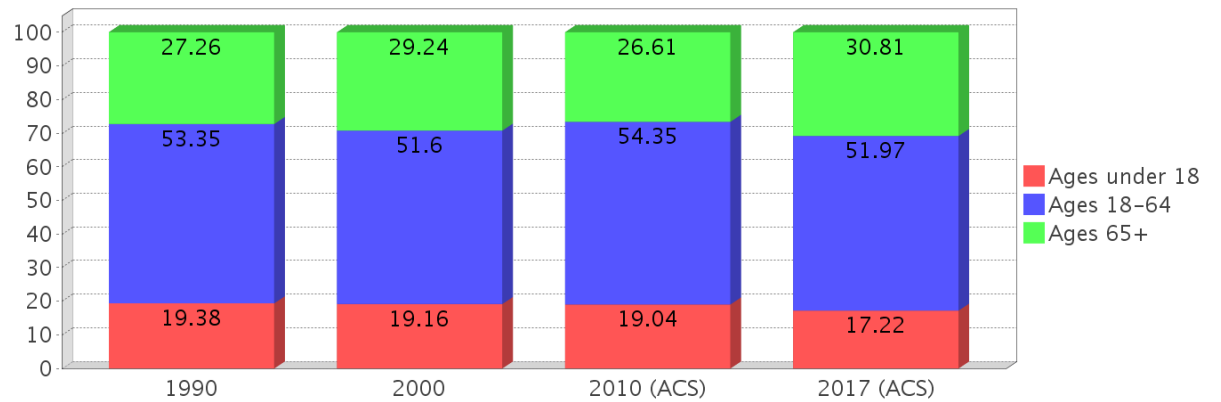
Description	1990	2000	2010 (ACS)	2017 (ACS)
White Alone	81,418 (90.26%)	98,775 (87.45%)	118,153 (87.19%)	127,295 (86.02%)
Black or African American Alone	7,660 (8.49%)	8,945 (7.92%)	11,634 (8.58%)	13,447 (9.09%)
Native Hawaiian and Other Pacific Islander Alone	(NA)	38 (0.03%)	32 (0.02%)	0 (0.00%)
Asian Alone	452 (0.50%)	864 (0.76%)	1,551 (1.14%)	1,822 (1.23%)
American Indian or Alaska Native Alone	136 (0.15%)	237 (0.21%)	241 (0.18%)	370 (0.25%)
Some Other Race Alone	521 (0.58%)	2,380 (2.11%)	2,106 (1.55%)	2,150 (1.45%)
Claimed 2 or More Races	(NA)	1,708 (1.51%)	1,801 (1.33%)	2,897 (1.96%)
Hispanic or Latino of Any Race	2,704 (3.00%)	7,300 (6.46%)	14,264 (10.53%)	17,872 (12.08%)
Not Hispanic or Latino	87,504 (97.00%)	105,647 (93.54%)	121,254 (89.47%)	130,109 (87.92%)
Minority	31,248 (34.64%)	18,629 (16.49%)	31,248 (23.06%)	35,634 (24.08%)



Age Trends - Indianriver

Description	1990	2000	2010 (ACS)	2017 (ACS)
Under Age 5	5.45%	4.61%	4.84%	4.33%
Ages 5-17	13.93%	14.55%	14.20%	12.89%
Ages 18-21	3.97%	3.60%	4.15%	3.99%
Ages 22-29	9.01%	6.53%	7.29%	7.32%
Ages 30-39	13.11%	11.25%	9.16%	8.84%
Ages 40-49	10.40%	13.15%	12.93%	10.25%
Ages 50-64	16.87%	17.06%	20.81%	21.57%
Age 65 and Over	27.26%	29.24%	26.61%	30.81%
-Ages 65-74	17.12%	14.68%	12.50%	15.92%
-Ages 75-84	8.28%	11.68%	10.23%	10.00%
-Age 85 and Over	1.86%	2.88%	3.89%	4.89%
Median Age	NA	47	48	52

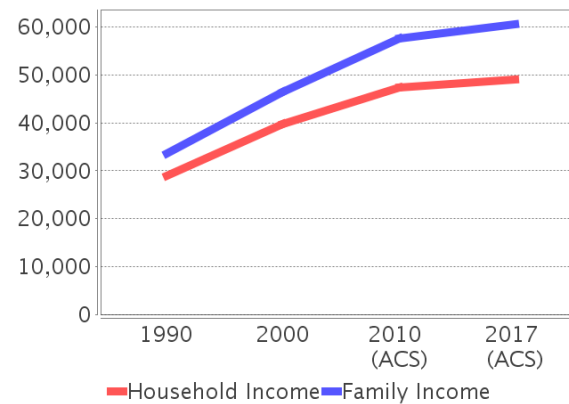
Percentage Population by Age Group - Indianriver



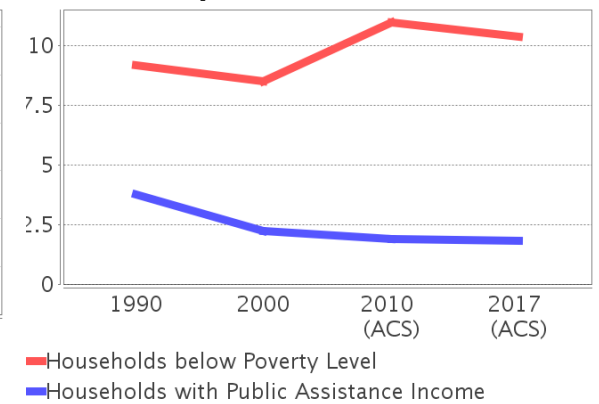
Income Trends - Indianriver

Description	1990	2000	2010 (ACS)	2017 (ACS)
Median Household Income	\$28,961	\$39,635	\$47,341	\$49,009
Median Family Income	\$33,569	\$46,385	\$57,477	\$60,575
Population below Poverty Level	8.75%	9.30%	12.63%	12.70%
Households below Poverty Level	9.17%	8.50%	10.97%	10.37%
Households with Public Assistance Income	3.77%	2.22%	1.90%	1.83%

Income Trends



Poverty and Public Assistance



Disability Trends - Indianriver

See the Data Sources section below for an explanation about the differences in disability data among the various years.

Description	1990	2000	2010 (ACS)	2017 (ACS)
Population 16 To 64 Years with a disability	4,599 (6.26%)	12,827 (12.06%)	NA (NA)	NA (NA)
Population 20 To 64 Years with a disability	NA (NA)	NA (NA)	NA (NA)	9,115 (12.33%)

Educational Attainment Trends - Indianriver

Age 25 and Over

Description	1990	2000	2010 (ACS)	2017 (ACS)
Less than 9th Grade	4,729 (7.08%)	5,292 (6.26%)	5,026 (5.00%)	5,054 (4.49%)
9th to 12th Grade, No Diploma	10,989 (16.45%)	10,299 (12.18%)	8,739 (8.69%)	7,953 (7.06%)
High School Graduate or Higher	51,080 (76.47%)	68,940 (81.56%)	86,756 (86.31%)	99,578 (88.45%)
Bachelor's Degree or Higher	12,779 (19.13%)	19,533 (23.11%)	26,870 (26.73%)	31,330 (27.83%)

Language Trends - Indianriver

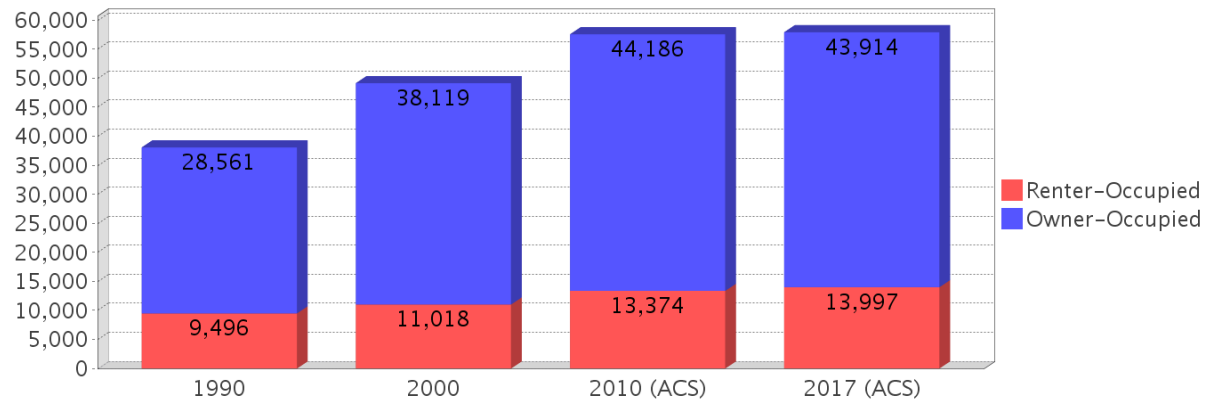
Age 5 and Over

Description	1990	2000	2010 (ACS)	2017 (ACS)
Speaks English Well	1,252 (1.47%)	2,307 (2.14%)	3,537 (2.74%)	4,115 (2.91%)
Speaks English Not Well	NA (NA)	1,595 (1.48%)	3,225 (2.50%)	1,977 (1.40%)
Speaks English Not at All	NA (NA)	849 (0.79%)	1,813 (1.41%)	1,315 (0.93%)
Speaks English Not Well or Not at All	871 (1.02%)	2,444 (2.27%)	5,038 (3.91%)	3,292 (2.33%)

Housing Trends - Indianriver

Description	1990	2000	2010 (ACS)	2017 (ACS)
Total	47,128	57,902	75,425	78,469
Units per Acre	0.143	0.176	0.229	0.238
Single-Family Units	24,382	36,240	50,814	52,438
Multi-Family Units	8,429	14,792	18,224	19,736
Mobile Home Units	4,960	6,786	6,372	6,205
Owner-Occupied Units	28,561	38,119	44,186	43,914
Renter-Occupied Units	9,496	11,018	13,374	13,997
Vacant Units	9,071	8,765	17,865	20,558
Median Housing Value	\$77,900	\$91,600	\$198,200	\$172,600
Occupied Housing Units w/No Vehicle	2,274 (5.98%)	2,963 (6.03%)	3,140 (5.46%)	3,085 (5.33%)

Housing Tenure - Indianriver



County Data Sources

Demographic data reported is from the U.S. Decennial Census (1990, 2000) and the American Community Survey (ACS) 5-year estimates from 2006-2010 and 2013-2017. The data was gathered at the county level. Depending on the dataset, the data represents 100% counts (Census Summary File 1) or sample-based information (Census Summary File 3 or ACS).

About the Census Data:

Use caution when comparing the 100% count data (Decennial Census) to the sample-based data (ACS). In any given year, about one in 40 or 2.5% of U.S. households will receive the ACS questionnaire. Over any five-year period, about one in eight households will receive the questionnaire, as compared to about one in six that received the long form questionnaire for the Decennial Census 2000. (Source: <http://mcdc.missouri.edu/pub/data/acs/Readme.shtml>) The U.S. Census Bureau provides help with this process:

<https://www.census.gov/programs-surveys/acs/guidance/comparing-acs-data/2017.html>

Use caution when interpreting changes in Race and Ethnicity over time. Starting with the 2000 Decennial Census, respondents were given a new option of selecting one or more race categories. Also in 2000, the placement of the question about Hispanic origin changed, helping to increase responsiveness to the Hispanic-origin question. Because of these and other changes, the 1990 data on race and ethnicity are not directly comparable with data from later censuses. (Source: <http://www.census.gov/prod/2001pubs/c2kbr01-1.pdf>; <http://www.census.gov/pred/www/rpts/Race%20and%20Ethnicity%20FINAL%20report.pdf>)

The "Minority" calculations are derived from Census and ACS data using both the race and ethnicity responses. On this report, "Minority" refers to individuals who list a race other than White and/or list their ethnicity as Hispanic/Latino. In other words, people who are multi-racial, any single race other than White, or Hispanic/Latino of any race are considered minorities.

Disability data is not included in the 2010 Decennial Census, or the 2006-2010 ACS. This data is available in the 2013-2017 ACS.

Because of changes made to the Census and ACS questions between 1990 and 2017, disability variables should not be compared from year to year. For example: 1) With the 1990 data the disabilities are listed as a "work disability" while this distinction is not made with 2000 or 2017 ACS data; 2) The 2017 ACS data includes the institutionalized population (e.g. persons in prisons and group homes), while this population is not included in 1990 or 2000; 3) the age groupings changed over the years.

Please take the following two concerns into account when viewing this data: 1) With the 1990 data the disabilities are listed as a "work disability" while this distinction is not made with 2000 or 2017 ACS data; 2) The 2017 ACS data includes the institutionalized population (e.g. persons in prisons and group homes), while this population is not included in 1990 or 2000.

source:

<https://www.census.gov/people/disability/methodology/acs.html>

<https://www.census.gov/population/www/cen2000/90vs00/index.html>

The category Bachelor's Degree or Higher under the heading Educational Attainment Trends is a subset of the category High School Graduate or Higher.

Metadata

- Community and Fraternal Centers https://etdmpub.florida-et.org/metadata/gc_communitycenter.htm
- Correctional Facilities in Florida https://etdmpub.florida-et.org/metadata/gc_correctional.htm
- Cultural Centers in Florida https://etdmpub.florida-et.org/metadata/gc_culturecenter.htm
- Fire Department and Rescue Station Facilities in Florida https://etdmpub.florida-et.org/metadata/gc_firestat.htm
- Local, State, and Federal Government Buildings in Florida https://etdmpub.florida-et.org/metadata/gc_govbuild.htm
- Florida Health Care Facilities https://etdmpub.florida-et.org/metadata/gc_health.htm
- Hospital Facilities in Florida https://etdmpub.florida-et.org/metadata/gc_hospitals.htm
- Law Enforcement Facilities in Florida https://etdmpub.florida-et.org/metadata/gc_lawenforce.htm
- Florida Parks and Recreational Facilities https://etdmpub.florida-et.org/metadata/gc_parks.htm
- Religious Centers https://etdmpub.florida-et.org/metadata/gc_religion.htm
- Florida Public and Private Schools https://etdmpub.florida-et.org/metadata/gc_schools.htm
- Social Service Centers https://etdmpub.florida-et.org/metadata/gc_socialservice.htm
- Assisted Rental Housing Units in Florida https://etdmpub.florida-et.org/metadata/gc_assisted_housing.htm
- Group Care Facilities <https://etdmpub.florida-et.org/metadata/groupcare.htm>
- Mobile Home Parks in Florida https://etdmpub.florida-et.org/metadata/gc_mobilehomes.htm
- Migrant Camps in Florida <https://etdmpub.florida-et.org/metadata/migrant.htm>
- Veteran Organizations and Facilities https://etdmpub.florida-et.org/metadata/gc_veterans.htm
- Generalized Land Use - Florida DOT District 4 https://etdmpub.florida-et.org/metadata/d4_lu_gen.htm
- Census Block Groups in Florida https://etdmpub.florida-et.org/metadata/e2_cenacs_cci.htm
- 1990 Census Block Groups in Florida https://etdmpub.florida-et.org/metadata/e2_cenblkgrp_1990_cci.htm
- 2000 Census Block Groups in Florida https://etdmpub.florida-et.org/metadata/e2_cenblkgrp_2000_cci.htm
- 2010 Census Block Groups in Florida https://etdmpub.florida-et.org/metadata/e2_cenblkgrp_2010_cci.htm