

# Sociocultural Data Report

## Yulee

**Area:** 23.182 square miles

**Jurisdiction(s):** Cities: NA  
Counties: Nassau

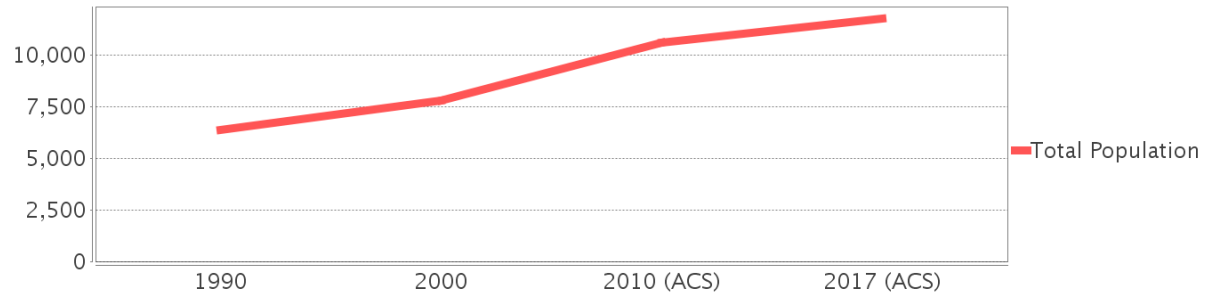
## General Population Trends

Description	1990	2000	2010 (ACS)	2017 (ACS)
Total Population	6,383	7,790	10,606	11,772
Total Households	2,253	2,877	3,990	4,131
Average Persons per Acre	0.28	0.39	0.71	0.85
Average Persons per Household	2.94	2.81	3.00	2.66
Average Persons per Family	3.26	3.25	3.00	3.14
Males	3,245	3,880	5,302	5,818
Females	3,138	3,910	5,304	5,954

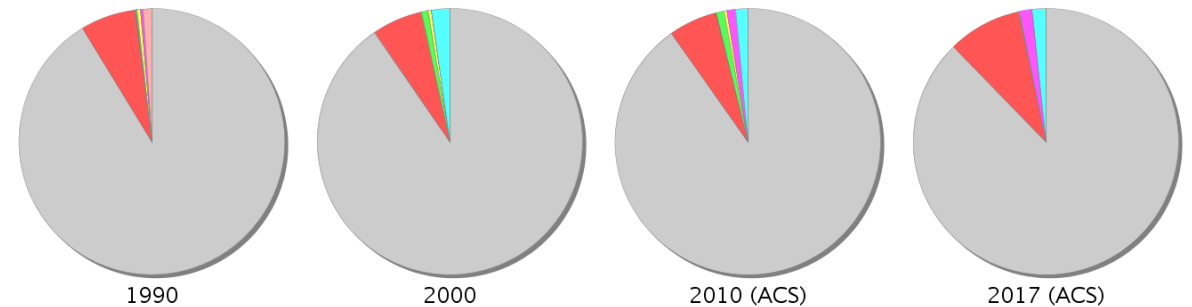
## Race and Ethnicity Trends

Description	1990	2000	2010 (ACS)	2017 (ACS)
White Alone	5,888 (92.25%)	7,043 (90.41%)	9,563 (90.17%)	10,321 (87.67%)
Black or African American Alone	435 (6.81%)	476 (6.11%)	630 (5.94%)	1,062 (9.02%)
Native Hawaiian and Other Pacific Islander Alone	5 (0.08%)	0 (0.00%)	6 (0.06%)	0 (0.00%)
Asian Alone	10 (0.16%)	65 (0.83%)	95 (0.90%)	9 (0.08%)
American Indian or Alaska Native Alone	27 (0.42%)	30 (0.39%)	43 (0.41%)	0 (0.00%)
Some Other Race Alone	19 (0.30%)	1 (0.01%)	105 (0.99%)	185 (1.57%)
Claimed 2 or More Races	NA (NA)	175 (2.25%)	163 (1.54%)	195 (1.66%)
Hispanic or Latino of Any Race	70 (1.10%)	43 (0.55%)	339 (3.20%)	325 (2.76%)
Not Hispanic or Latino	6,313 (98.90%)	7,747 (99.45%)	10,267 (96.80%)	11,447 (97.24%)
Minority	540 (8.46%)	789 (10.13%)	1,236 (11.65%)	1,600 (13.59%)

## Population

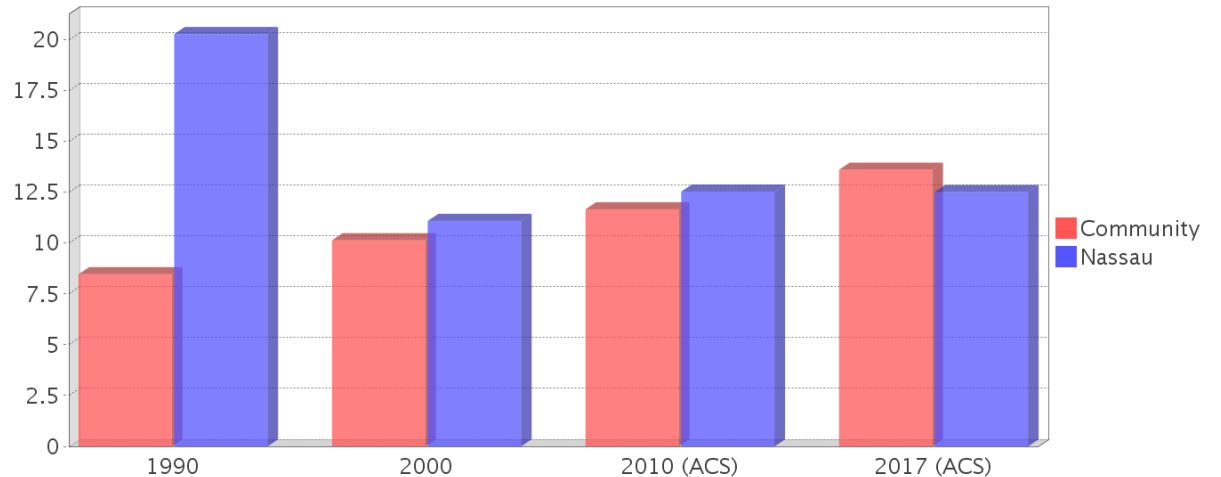


## Race



● White Alone 
 ● Black or African American Alone 
 ● Native Hawaiian and Other Pacific Islander Alone 
 ● Asian Alone 
 ● American Indian or Alaska Native Alone 
 ● Some Other Race Alone 
 ● Claimed 2 or More Races (after 1990) 
 ● Hispanic or Latino of Any Race (1990 only)

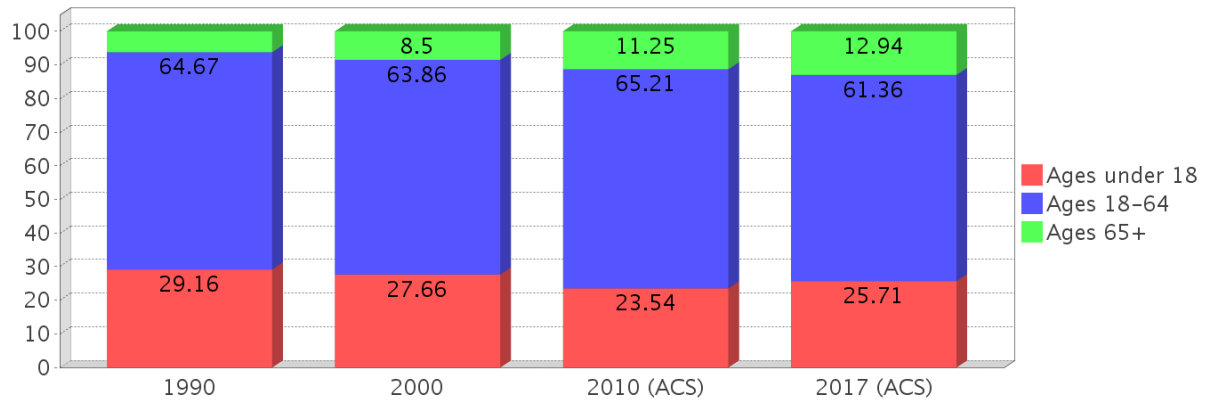
## Minority Percentage Population



### Age Trends

Description	1990	2000	2010 (ACS)	2017 (ACS)
Under Age 5	8.32%	6.53%	6.36%	7.76%
Ages 5-17	20.84%	21.13%	17.18%	17.94%
Ages 18-21	5.97%	4.83%	5.41%	4.27%
Ages 22-29	12.53%	10.08%	10.81%	9.35%
Ages 30-39	18.64%	16.08%	13.38%	15.12%
Ages 40-49	13.82%	17.47%	14.94%	14.08%
Ages 50-64	13.71%	15.40%	20.66%	18.54%
Age 65 and Over	6.16%	8.50%	11.25%	12.94%
-Ages 65-74	4.17%	5.64%	7.36%	8.15%
-Ages 75-84	1.75%	2.04%	3.02%	3.19%
-Age 85 and Over	0.25%	0.82%	0.87%	1.61%
Median Age	NA	34	39	44

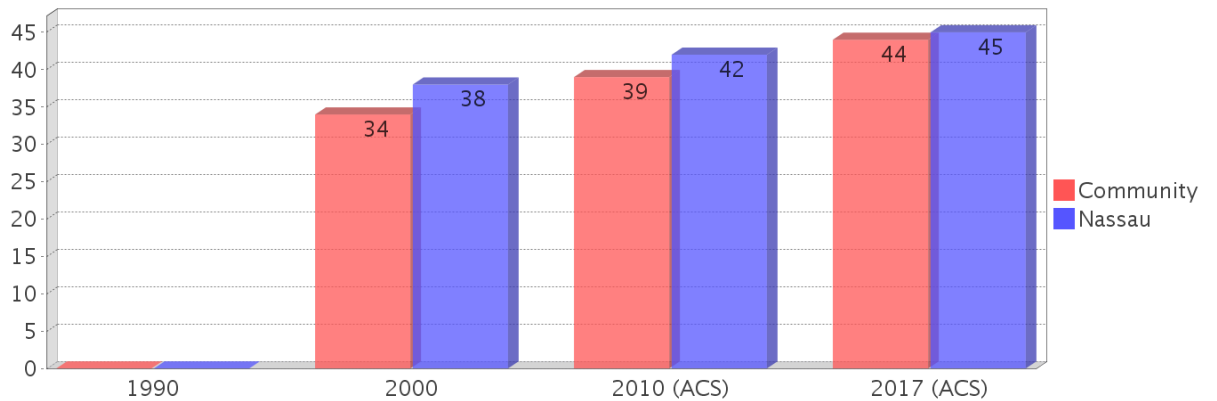
### Percentage Population by Age Group



### Income Trends

Description	1990	2000	2010 (ACS)	2017 (ACS)
Median Household Income	\$30,714	\$43,662	\$53,255	\$64,657
Median Family Income	\$34,625	\$49,341	\$61,563	\$68,282
Population below Poverty Level	11.69%	10.91%	5.94%	13.37%
Households below Poverty Level	12.34%	11.68%	5.39%	11.47%
Households with Public Assistance Income	3.86%	1.77%	2.51%	1.28%

### Median Age Comparison

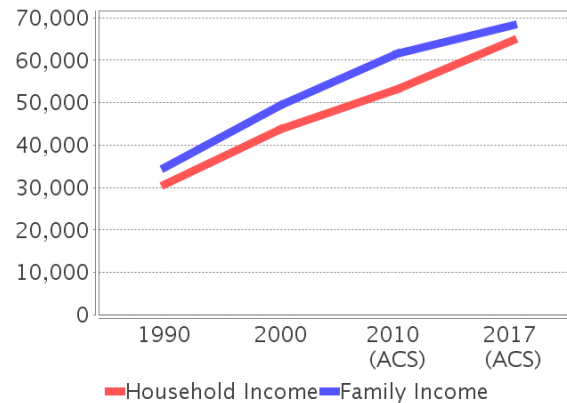


### Disability Trends

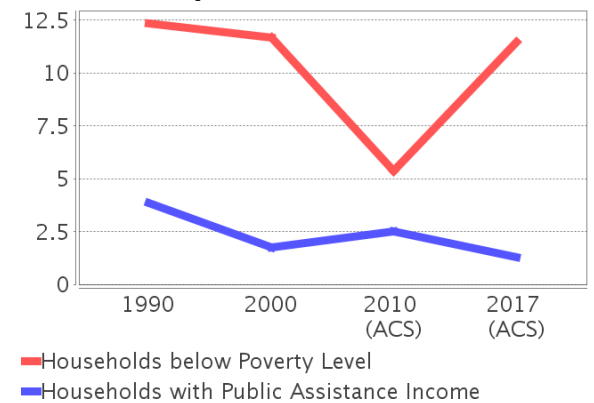
See the Data Sources section below for an explanation about the differences in disability data among the various years.

Description	1990	2000	2010 (ACS)	2017 (ACS)
Population 16 To 64 Years with a disability	428 (9.13%)	934 (12.86%)	(NA)	(NA)
Population 20 To 64 Years with a disability	(NA)	(NA)	(NA)	1019 (14.50%)

### Income Trends



### Poverty and Public Assistance



## Educational Attainment Trends

Age 25 and Over

Description	1990	2000	2010 (ACS)	2017 (ACS)
Less than 9th Grade	372 (9.53%)	297 (5.92%)	237 (3.06%)	388 (4.96%)
9th to 12th Grade, No Diploma	940 (24.08%)	751 (14.98%)	736 (9.49%)	411 (5.26%)
High School Graduate or Higher	2,591 (66.38%)	3,965 (79.09%)	6,781 (87.44%)	7,022 (89.78%)
Bachelor's Degree or Higher	196 (5.02%)	343 (6.84%)	999 (12.88%)	1,462 (18.69%)

## Language Trends

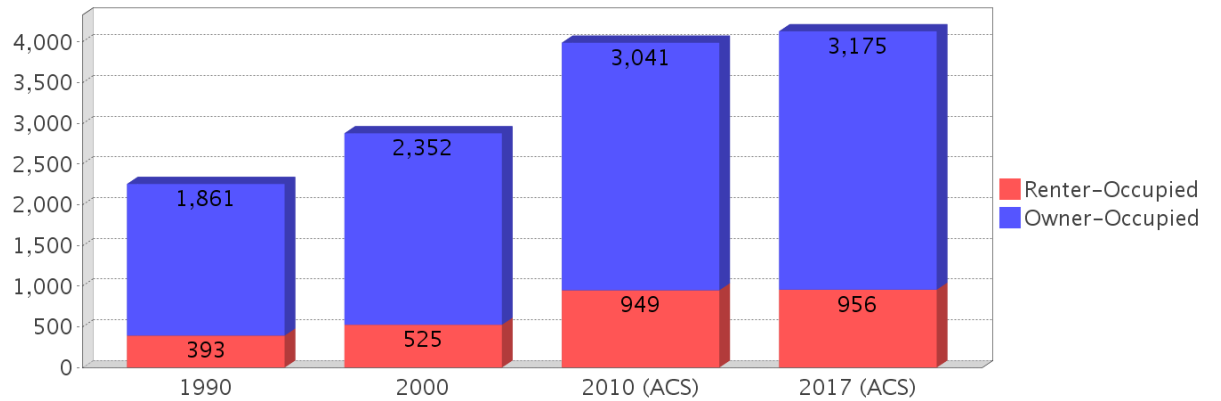
Age 5 and Over

Description	1990	2000	2010 (ACS)	2017 (ACS)
Speaks English Well	47 (0.80%)	27 (0.37%)	30 (0.27%)	30 (0.28%)
Speaks English Not Well	NA (NA)	7 (0.10%)	27 (0.25%)	22 (0.20%)
Speaks English Not at All	NA (NA)	0 (0.00%)	0 (0.00%)	29 (0.27%)
Speaks English Not Well or Not at All	64 (1.08%)	7 (0.10%)	27 (0.25%)	51 (0.47%)

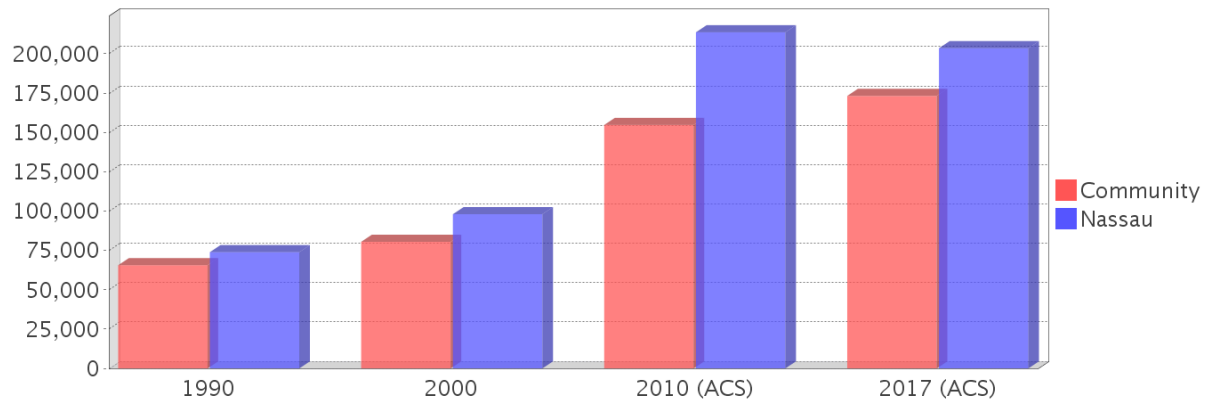
## Housing Trends

Description	1990	2000	2010 (ACS)	2017 (ACS)
Total	2,388	3,082	4,317	4,465
Units per Acre	0.21	0.26	0.32	0.33
Single-Family Units	956	1,511	2,531	3,025
Multi-Family Units	82	108	85	323
Mobile Home Units	1,200	1,455	1,964	1,092
Owner-Occupied Units	1,861	2,352	3,041	3,175
Renter-Occupied Units	393	525	949	956
Vacant Units	135	205	327	334
Median Housing Value	\$65,600	\$80,450	\$154,700	\$173,150
Occupied Housing Units w/No Vehicle	45 (2.00%)	176 (6.12%)	170 (4.26%)	296 (7.17%)

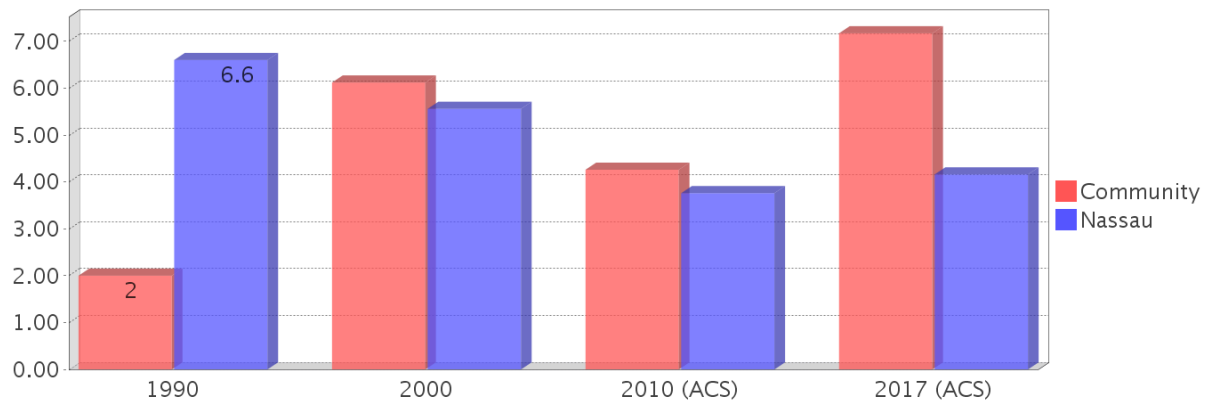
## Housing Tenure



## Median Housing Value Comparison

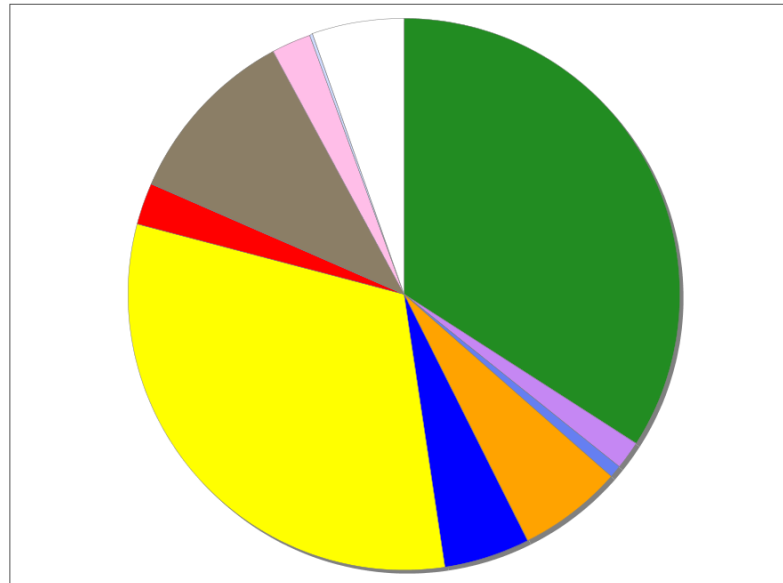


## Occupied Units With No Vehicles Available



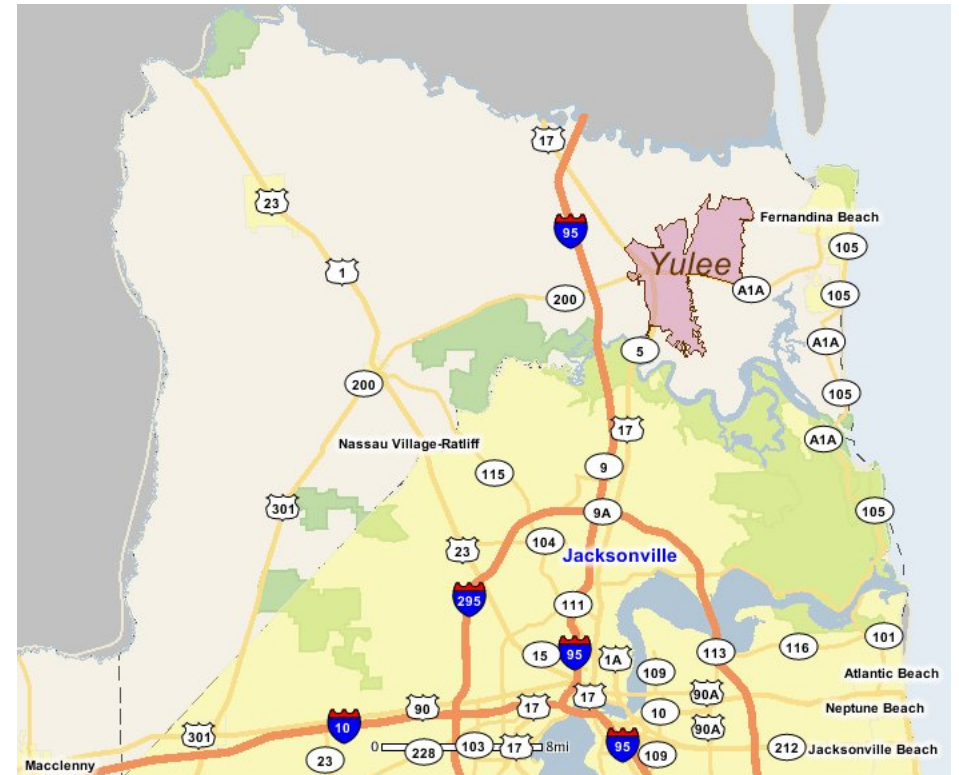
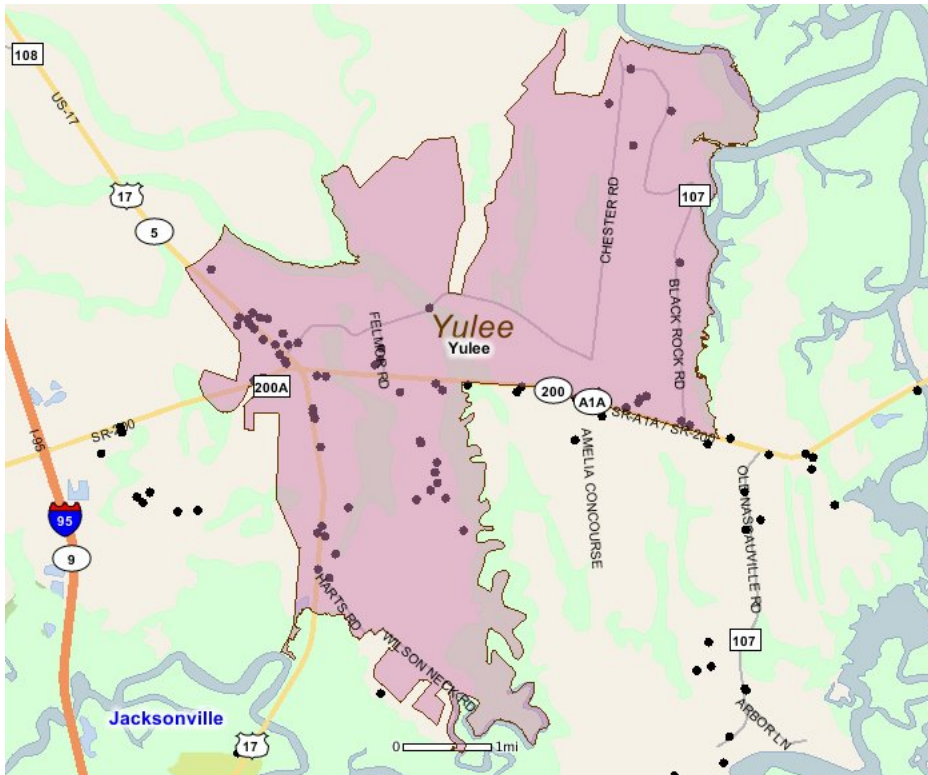
## Existing Land Use

Land Use Type	Acres	Percentage
Acreage Not Zoned For Agriculture	0	0.00%
Agricultural	4,714	31.77%
Centrally Assessed	0	0.00%
Industrial	231	1.56%
Institutional	100	0.67%
Mining	0	0.00%
Other	849	5.72%
Public/Semi-Public	693	4.67%
Recreation	0	0.00%
Residential	4,352	29.33%
Retail/Office	338	2.28%
Row	1	0.01%
Vacant Residential	1,463	9.86%
Vacant Nonresidential	320	2.16%
Water	26	0.18%
Parcels With No Values	743	5.01%



- Acreage Not Zoned For Agriculture
- Agricultural
- Centrally Assessed
- Industrial
- Institutional
- Mining
- Other
- Public/Semi-Public
- Recreation
- Residential
- Retail/Office
- Row
- Vacant Residential
- Vacant Nonresidential
- Water
- Parcels With No Values

## Location Maps



---

## Community Facilities

The community facilities information below is useful in a variety of ways for environmental evaluations. These community resources should be evaluated for potential sociocultural effects, such as accessibility and relocation potential. The facility types may indicate the types of population groups present in the project study area. Facility staff and leaders can be sources of community information such as who uses the facility and how it is used. Additionally, community facilities are potential public meeting venues.

### Assisted Housing (Points)

Facility Name	Address	Zip Code
YULEE VILLAS II	850766 US HIGHWAY 17	32097
GREEN ACRES APTS	850746 US HWY 17	32097
YULEE VILLAS	850766 US HIGHWAY 17	32097

### Community Centers (Points)

Facility Name	Address	Zip Code
LIONS CLUB - YULEE	893 N US HWY 17	32097
MOOSE LODGE 2352 - NASSAU	850682 US HWY 17 S	32041
ASSOCIATION FOR RETARDED CITIZENS (ARC) - NASSAU COUNTY	1105 HAMILTON ST	32097

### Fire Stations (Points)

Facility Name	Address	Zip Code
YULEE VOLUNTEER FIRE DEPARTMENT STATION 3	86048 GOODBREAD RD	32097
YULEE VOLUNTEER FIRE DEPARTMENT STATION 3A	85230 MINER RD	32097
YULEE VOLUNTEER FIRE DEPARTMENT STATION 3B	3600 PIRATES WAY	32097
NASSAU COUNTY FIRE DEPARTMENT AND RESCUE STATION 30 (YULEE)	86028 PAGES DAIRY RD	32097
NASSAU COUNTY FIRE DEPARTMENT AND RESCUE HEADQUARTERS	96160 NASSAU PLACE	32097

### Florida Parks and Recreational Facilities (Points)

Facility Name	Address	Zip Code
JOHN MUIR ECOLOGICAL PARK	EAST SR 200	32097
BENCHMARK GLEN PARK	BENCHMARK AVE & DIAMOND ST	32097
YULEE BALL PARK	86142 GOODBREAD DR	32097
LOFTON CREEK BOAT RAMP	PAGES DAIRY RD	32097

### Government Building

Facility Name	Address	Zip Code
NASSAU COUNTY HEALTH DEPARTMENT	86207 FELMORE RD	32097
NASSAU COUNTY SUPERVISOR OF ELECTIONS	96135 NASSAU PLACE	32097
NASSAU COUNTY PROPERTY APPRAISER	96135 NASSAU PLACE	32097
NASSAU COUNTY HEALTH DEPARTMENT - ENVIRONMENTAL HEALTH	96135 NASSAU PLACE	32097
U S POST OFFICE - YULEE	1243 E STATE ROAD 200	32097

### Healthcare Facilities (Geocoded)

Facility Name	Address	Zip Code
CARE CENTERS OF NASSAU, LLC MINER	85474 MINER ROAD	32097
NORTH FL OB/GYN ASSOC YULEE	86058 ST PETER BOULEVARD	32097
YULEE FAMILY PRACTICE CENTER	851042 US 17 HIGHWAY	32097
NCHD- YULEE HEALTH CENTER	528 PAGES DAIRY ROAD	32097
CARESPOT EXPRESS HEALTHCARE	463941 SR 200	32097
CARE CENTERS OF NASSAU, LLC MINER NORTH	85609 MINER ROAD	32097
NORTH FL OB/GYN MCGRATH	850966 US HIGHWAY 17 NORTH	32097
PUBLIX	463855 SR 200	32097

## Mobile Home Parks in Florida

Facility Name	Address	Zip Code
TEAKWOOD MOBILE HOME PARK	436 S US HWY 17	32097
DUCK POND PARK	78030 SUSI LN	32097

## Public and Private Schools (Points)

Facility Name	Address	Zip Code
NASSAU CHISTIAN SCHOOL	101 BLACKROCK RD	32097
EARLY IMPRESSIONS @ MIDTOWN	463159 SR 200, UNIT 4	32097
YULEE HIGH SCHOOL	85375 MINER RD	32097
YULEE MIDDLE SCHOOL	85439 MINER RD	32097
NASSAU COMMUNITY ACADEMY	850935 US HWY 17 N BLDG 1201	32097
YULEE ELEMENTARY SCHOOL	389 FELMORE ROAD	32097
YULEE PRIMARY SCHOOL	964 GOODBREAD ROAD	32097

## Religious Centers (Points)

Facility Name	Address	Zip Code
NASSAU NAZARENE FELLOWSHIP	665 NORTH US HIGHWAY 17	32097
MIRACLE FAITH CHURCH OF GOD	87688 ROSES BLUFF RD	32097
CELEBRATION BAPTIST CHURCH	1691 CALAWAY DRIVE	32097
FRIENDSHIP BAPTIST	MINER ROAD	32097
RIVER OF PRAISE WORSHIP CENTER	83410 SAINT MARK DRIVE	32097
SOLID ROCK CHURCH OF GOD BY FAITH	14 PALM TREE DRIVE	32097
NEW LIFE BAPTIST CHURCH	464069 STATE ROAD 200	32097
CHESTER CHURCH OF GOD	96984 BLACKROCK ROAD	32097
HEDGES BAPTIST CHURCH	1576 SUTTON PLACE	32097
FIRST BAPTIST CHURCH OF YULEE	PINEWOOD DRIVE	32097
GRACE COMMUNITY CHURCH	85439 MINER ROAD	32097
BLACKROCK BAPTIST CHURCH	918 BLACKROCK ROAD	32097
YULEE BAPTIST CHURCH	31 WEST HARTS ROAD	32097
YULEE CHURCH OF GOD	1491 LANDOVER DR	32097
FIRST ASSEMBLY OF GOD CHURCH	506 S US HIGHWAY 17	32097
NORTHEAST FLORIDA BAPTIST ASSOCIATION	851035 US HWY 17	32097
COMMUNITY BAPTIST CHURCH	85326 WINONA BAYVIEW ROAD	32097
OASIS CHRISTIAN CENTER	246 HAMILTON ST	32097
CELEBRATION BAPTIST CHURCH	85520 MINER RD	32097
NORTHEAST FLORIDA BAPTIST ASSOCIATION	921 SOUTH US HIGHWAY 17	32097

## Social Services (Geocoded)

Facility Name	Address	Zip Code
YULEE WIC CLINIC	86014 PAGES DAIRY ROAD	32097

## US Census Places

Facility Name
Yulee

---

## Block Groups

The following Census Block Groups were used to calculate demographics for this report.

### 1990 Census Block Groups

120890503006, 120890503005, 120890503003, 120890503001, 120890503002, 120890503004

### 2000 Census Block Groups

120890503021, 120890503034, 120890503016, 120890503033, 120890503015

### 2010 Census Block Groups

120890503021, 120890503012, 120890503033, 120890503032, 120890503031, 120890503022, 120890503023, 120890503013

### 2017 Census Block Groups

120890503012, 120890503021, 120890503032, 120890503023, 120890503033, 120890503013, 120890503031, 120890503022

---

## Data Sources

### Area

The geographic area of the community based on a user-specified community boundary or area of interest (AOI) boundary.

### Jurisdiction

Jurisdiction(s) includes local government boundaries that intersect the community or AOI boundary.

### Demographic Data

Demographic data reported under the headings General Population Trends, Race and Ethnicity Trends, Age Trends, Income Trends, Educational Attainment Trends, Language Trends, and Housing Trends is from the U.S. Decennial Census (1990, 2000) and the American Community Survey (ACS) 5-year estimates from 2006-2010 and 2013-2017. The data was gathered at the block group level for user-specified community boundaries and AOIs, and at the county level for counties. Depending on the dataset, the data represents 100% counts (Census Summary File 1) or sample-based information (Census Summary File 3 or ACS).

### About the Census Data:

User-specified community boundaries and AOIs do not always correspond precisely to block group boundaries. In these instances, adjustment of the geographic area and data for affected block groups is required to estimate the actual population. To improve the accuracy of such estimates in the SDR report, the census block group data was adjusted to exclude all census blocks with a population of two or fewer. These areas were eliminated from the corresponding years' block groups. Next, the portion of the block group that lies outside of the community or AOI boundary was removed. The demographics within each block group were then recalculated, assuming an equal area distribution of the population. Note that there may be areas where there is no population.

Use caution when comparing the 100% count data (Decennial Census) to the sample-based data (ACS). In any given year, about one in 40 or 2.5% of U.S. households will receive the ACS questionnaire. Over any five-year period, about one in eight households will receive the questionnaire, as compared to about one in six that received the long form questionnaire for the Decennial Census 2000. (Source: <http://mcdc.missouri.edu/pub/data/acs/Readme.shtml>) The U.S.

Census Bureau provides help with this process:

<https://www.census.gov/programs-surveys/acs/guidance/comparing-acs-data/2017.html>

Use caution when interpreting changes in Race and Ethnicity over time. Starting with the 2000 Decennial Census, respondents were given a new option of selecting one or more race categories. Also in 2000, the placement of the question about Hispanic origin changed, helping to increase responsiveness to the Hispanic-origin question. Because of these and other changes, the 1990 data on race and ethnicity are not directly comparable with data from later censuses. (Source: <http://www.census.gov/prod/2001pubs/c2kbr01-1.pdf>;  
<http://www.census.gov/pred/www/rpts/Race%20and%20Ethnicity%20FINAL%20report.pdf>)

The "Minority" calculations are derived from Census and ACS data using both the race and ethnicity responses. On this report, "Minority" refers to individuals who list a race other than White and/or list their ethnicity as Hispanic/Latino. In other words, people who are multi-racial, any single race other than White, or Hispanic/Latino of any race are considered minorities.

Disability data is not included in the 2010 Decennial Census, or the 2006-2010 ACS. This data is available in the 2013-2017 ACS.

Because of changes made to the Census and ACS questions between 1990 and 2017, disability variables should not be compared from year to year. For example: 1) With the 1990 data the disabilities are listed as a "work disability" while this distinction is not made with 2000 or 2017 ACS data; 2) The 2017 ACS data includes the institutionalized population (e.g. persons in prisons and group homes), while this population is not included in 1990 or 2000; 3) the age groupings changed over the years.

Please take the following two concerns into account when viewing this data: 1) With the 1990 data the disabilities are listed as a "work disability" while this distinction is not made with 2000 or 2017 ACS data; 2) The 2017 ACS data includes the institutionalized population (e.g. persons in prisons and group homes), while this population is not included in 1990 or 2000.

The category Bachelor's Degree or Higher under the heading Educational Attainment Trends is a subset of the category High School Graduate or Higher.

Income of households. This includes the income of the householder and all other individuals 15 years old and over in the household, whether they are related to the householder or not. Because many households consist of only one person, average household income is usually less than average family income.

Income of families. In compiling statistics on family income, the incomes of all members 15 years old and over related to the householder are summed and treated as a single amount.

Age Trends median age for 1990 is not available.

### **Land Use Data**

The Land Use information Indicates acreages and percentages for the generalized land use types used to group parcel-specific, existing land use assigned by the county property appraiser office according to the Florida Department of Revenue land use codes.

### **Community Facilities Data**

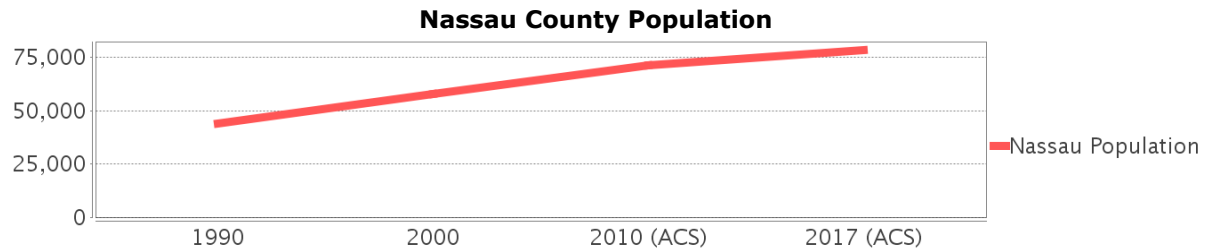
- Assisted Rental Housing Units - Identifies multifamily rental developments that receive funding assistance under federal, state, and local government programs to offer affordable housing as reported by the Shimberg Center for Housing Studies, University of Florida.
- Mobile Home Parks - Identifies approved or acknowledged mobile home parks reported by the Florida Department of Business and Professional Regulation and Florida Department of Health.

- Migrant Camps - Identifies migrant labor camp facilities inspected by the Florida Department of Health.
- Group Care Facilities - Identifies group care facilities inspected by the Florida Department of Health.
- Community Center and Fraternal Association Facilities - Identifies facilities reported by multiple sources.
- Law Enforcement Correctional Facilities - Identifies facilities reported by multiple sources.
- Cultural Centers - Identifies cultural centers including organizations, buildings, or complexes that promote culture and arts (e.g., aquariums and zoological facilities; arboreta and botanical gardens; dinner theaters; drive-ins; historical places and services; libraries; motion picture theaters; museums and art galleries; performing arts centers; performing arts theaters; planetariums; studios and art galleries; and theater producers stage facilities) reported by multiple sources.
- Fire Department and Rescue Station Facilities - Identifies facilities reported by multiple sources.
- Government Buildings - Identifies local, state, and federal government buildings reported by multiple sources.
- Health Care Facilities - Identifies health care facilities including abortion clinics, dialysis clinics, medical doctors, nursing homes, osteopaths, state laboratories/clinics, and surgicenters/walk-in clinics reported by the Florida Department of Health.
- Hospital Facilities - Identifies hospital facilities reported by multiple sources.
- Law Enforcement Facilities - Identifies law enforcement facilities reported by multiple sources.
- Parks and Recreational Facilities - Identifies parks and recreational facilities reported by multiple sources.
- Religious Center Facilities - Identifies religious centers including churches, temples, synagogues, mosques, chapels, centers, and other types of religious facilities reported by multiple sources.
- Private and Public Schools - Identifies private and public schools reported by multiple sources.
- Social Service Centers - Identifies social service centers reported by multiple sources.
- Veteran Organizations and Facilities

# Nassau County Demographic Profile

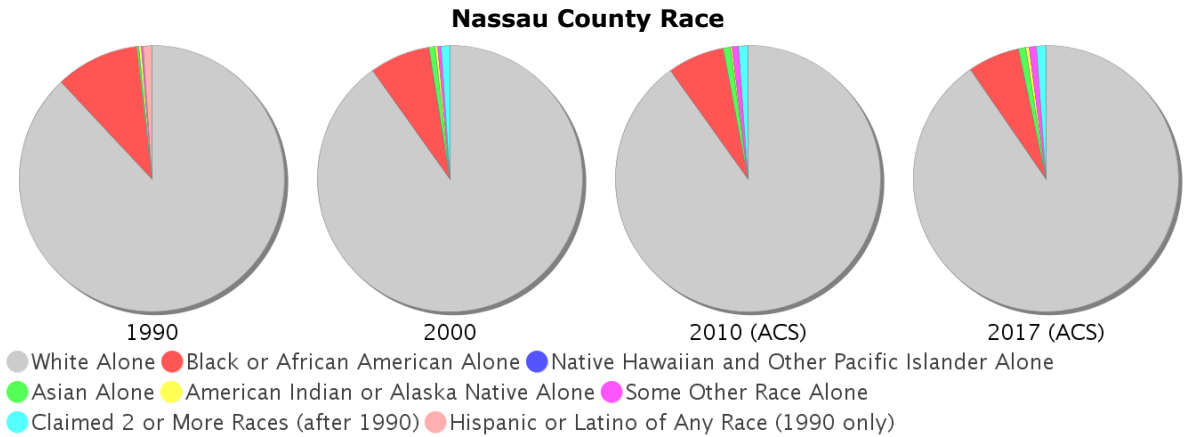
## General Population Trends - Nassau

Description	1990	2000	2010 (ACS)	2017 (ACS)
Total Population	43,941	57,663	71,099	78,435
Total Households	16,192	21,980	27,255	30,454
Average Persons per Acre	0.104	0.135	0.167	0.184
Average Persons per Household	2.714	2.595	3.00	2.55
Average Persons per Family	3.181	3.043	3.053	3.055
Males	21,735	28,326	34,932	38,706
Females	22,206	29,337	36,167	39,729



## Race and Ethnicity Trends - Nassau

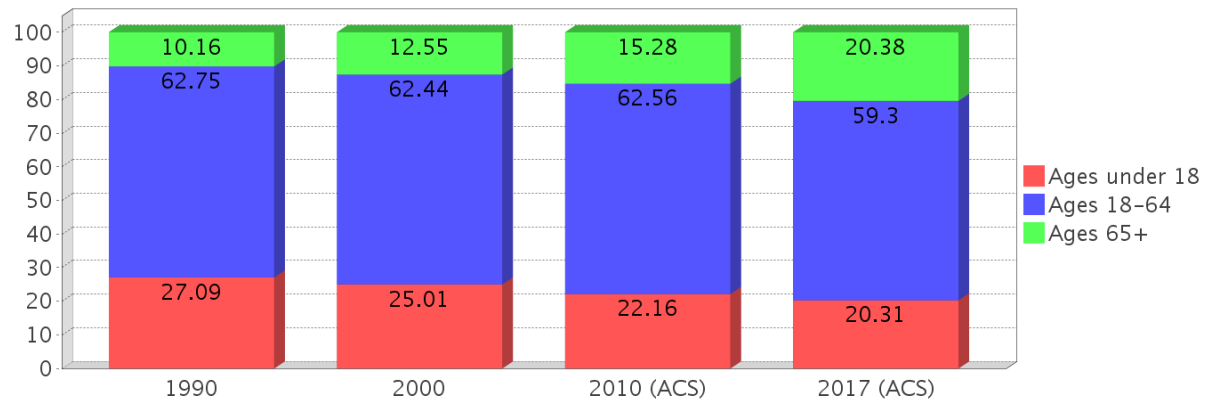
Description	1990	2000	2010 (ACS)	2017 (ACS)
White Alone	39,069 (88.91%)	51,964 (90.12%)	64,034 (90.06%)	70,888 (90.38%)
Black or African American Alone	4,522 (10.29%)	4,240 (7.35%)	4,936 (6.94%)	4,913 (6.26%)
Native Hawaiian and Other Pacific Islander Alone	(NA)	5 (0.01%)	0 (0.00%)	5 (0.01%)
Asian Alone	119 (0.27%)	422 (0.73%)	624 (0.88%)	716 (0.91%)
American Indian or Alaska Native Alone	134 (0.30%)	193 (0.33%)	127 (0.18%)	310 (0.40%)
Some Other Race Alone	83 (0.19%)	224 (0.39%)	588 (0.83%)	698 (0.89%)
Claimed 2 or More Races	(NA)	615 (1.07%)	790 (1.11%)	905 (1.15%)
Hispanic or Latino of Any Race	480 (1.09%)	1,047 (1.82%)	2,188 (3.08%)	2,979 (3.80%)
Not Hispanic or Latino	43,461 (98.91%)	56,616 (98.18%)	68,911 (96.92%)	75,456 (96.20%)
Minority	8,904 (20.26%)	6,387 (11.08%)	8,904 (12.52%)	9,804 (12.50%)



### Age Trends - Nassau

Description	1990	2000	2010 (ACS)	2017 (ACS)
Under Age 5	7.41%	6.10%	5.38%	5.25%
Ages 5-17	19.69%	18.91%	16.78%	15.06%
Ages 18-21	5.56%	4.43%	4.79%	4.21%
Ages 22-29	11.51%	8.58%	8.20%	8.36%
Ages 30-39	16.90%	14.92%	11.45%	10.92%
Ages 40-49	14.09%	16.06%	15.48%	12.85%
Ages 50-64	14.69%	18.45%	22.65%	22.96%
Age 65 and Over	10.16%	12.55%	15.28%	20.38%
-Ages 65-74	6.45%	8.06%	9.41%	12.90%
-Ages 75-84	3.04%	3.57%	4.30%	5.60%
-Age 85 and Over	0.66%	0.92%	1.57%	1.88%
Median Age	NA	38	42	45

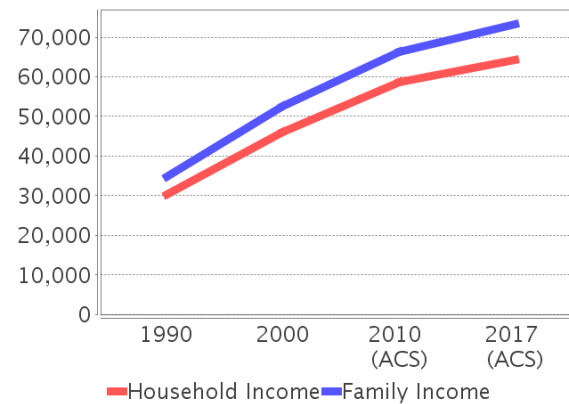
Percentage Population by Age Group - Nassau



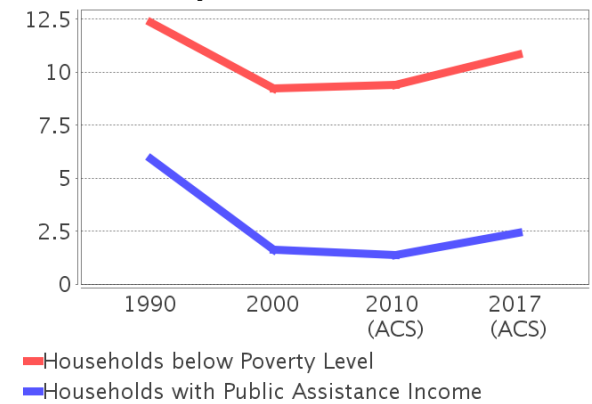
### Income Trends - Nassau

Description	1990	2000	2010 (ACS)	2017 (ACS)
Median Household Income	\$30,233	\$46,022	\$58,712	\$64,294
Median Family Income	\$34,740	\$52,477	\$66,233	\$73,314
Population below Poverty Level	11.66%	9.15%	9.29%	11.42%
Households below Poverty Level	12.34%	9.22%	9.40%	10.84%
Households with Public Assistance Income	5.92%	1.61%	1.36%	2.45%

Income Trends



Poverty and Public Assistance



### Disability Trends - Nassau

See the Data Sources section below for an explanation about the differences in disability data among the various years.

Description	1990	2000	2010 (ACS)	2017 (ACS)
Population 16 To 64 Years with a disability	3,083 (9.41%)	7,299 (13.68%)	NA (NA)	NA (NA)
Population 20 To 64 Years with a disability	NA (NA)	NA (NA)	NA (NA)	5,802 (12.96%)

## Educational Attainment Trends - Nassau

Age 25 and Over

Description	1990	2000	2010 (ACS)	2017 (ACS)
Less than 9th Grade	3,027 (10.80%)	2,196 (5.63%)	1,627 (3.27%)	1,818 (3.19%)
9th to 12th Grade, No Diploma	5,051 (18.02%)	5,202 (13.35%)	5,106 (10.25%)	3,105 (5.46%)
High School Graduate or Higher	19,953 (71.18%)	31,574 (81.02%)	43,081 (86.48%)	51,991 (91.35%)
Bachelor's Degree or Higher	3,492 (12.46%)	7,364 (18.90%)	10,915 (21.91%)	15,459 (27.16%)

## Language Trends - Nassau

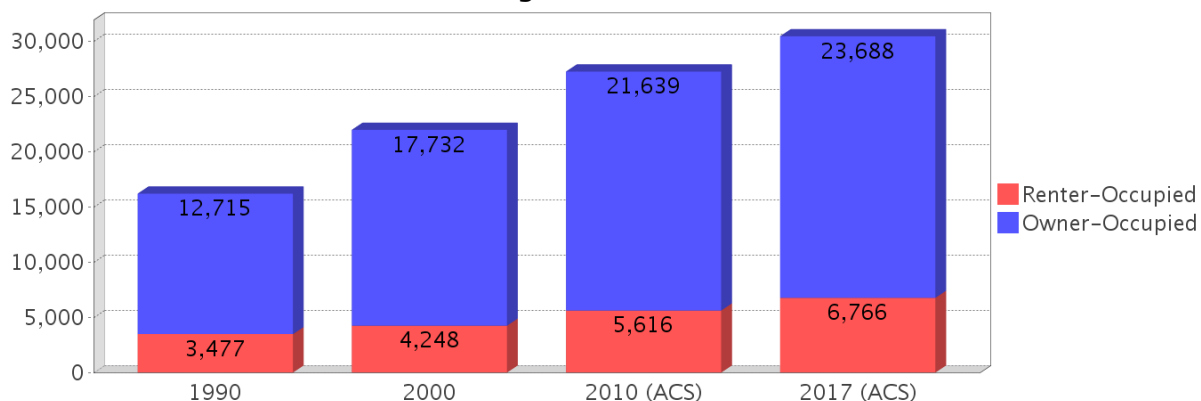
Age 5 and Over

Description	1990	2000	2010 (ACS)	2017 (ACS)
Speaks English Well	214 (0.53%)	299 (0.55%)	266 (0.40%)	690 (0.93%)
Speaks English Not Well	NA (NA)	167 (0.31%)	170 (0.25%)	212 (0.29%)
Speaks English Not at All	NA (NA)	72 (0.13%)	36 (0.05%)	123 (0.17%)
Speaks English Not Well or Not at All	222 (0.55%)	239 (0.44%)	206 (0.31%)	335 (0.45%)

## Housing Trends - Nassau

Description	1990	2000	2010 (ACS)	2017 (ACS)
Total	18,726	25,917	34,012	37,177
Units per Acre	0.045	0.061	0.08	0.087
Single-Family Units	8,949	14,857	21,909	24,987
Multi-Family Units	1,733	4,262	4,761	5,310
Mobile Home Units	5,400	6,771	7,271	6,777
Owner-Occupied Units	12,715	17,732	21,639	23,688
Renter-Occupied Units	3,477	4,248	5,616	6,766
Vacant Units	2,534	3,937	6,757	6,723
Median Housing Value	\$73,900	\$98,000	\$213,600	\$203,500
Occupied Housing Units w/No Vehicle	1,069 (6.60%)	1,223 (5.56%)	1,026 (3.76%)	1,268 (4.16%)

## Housing Tenure - Nassau



---

## County Data Sources

Demographic data reported is from the U.S. Decennial Census (1990, 2000) and the American Community Survey (ACS) 5-year estimates from 2006-2010 and 2013-2017. The data was gathered at the county level. Depending on the dataset, the data represents 100% counts (Census Summary File 1) or sample-based information (Census Summary File 3 or ACS).

### About the Census Data:

Use caution when comparing the 100% count data (Decennial Census) to the sample-based data (ACS). In any given year, about one in 40 or 2.5% of U.S. households will receive the ACS questionnaire. Over any five-year period, about one in eight households will receive the questionnaire, as compared to about one in six that received the long form questionnaire for the Decennial Census 2000. (Source: <http://mcdc.missouri.edu/pub/data/acs/Readme.shtml>) The U.S. Census Bureau provides help with this process:

<https://www.census.gov/programs-surveys/acs/guidance/comparing-acs-data/2017.html>

Use caution when interpreting changes in Race and Ethnicity over time. Starting with the 2000 Decennial Census, respondents were given a new option of selecting one or more race categories. Also in 2000, the placement of the question about Hispanic origin changed, helping to increase responsiveness to the Hispanic-origin question. Because of these and other changes, the 1990 data on race and ethnicity are not directly comparable with data from later censuses. (Source: <http://www.census.gov/prod/2001pubs/c2kbr01-1.pdf>; <http://www.census.gov/pred/www/rpts/Race%20and%20Ethnicity%20FINAL%20report.pdf>)

The "Minority" calculations are derived from Census and ACS data using both the race and ethnicity responses. On this report, "Minority" refers to individuals who list a race other than White and/or list their ethnicity as Hispanic/Latino. In other words, people who are multi-racial, any single race other than White, or Hispanic/Latino of any race are considered minorities.

Disability data is not included in the 2010 Decennial Census, or the 2006-2010 ACS. This data is available in the 2013-2017 ACS.

Because of changes made to the Census and ACS questions between 1990 and 2017, disability variables should not be compared from year to year. For example: 1) With the 1990 data the disabilities are listed as a "work disability" while this distinction is not made with 2000 or 2017 ACS data; 2) The 2017 ACS data includes the institutionalized population (e.g. persons in prisons and group homes), while this population is not included in 1990 or 2000; 3) the age groupings changed over the years.

Please take the following two concerns into account when viewing this data: 1) With the 1990 data the disabilities are listed as a "work disability" while this distinction is not made with 2000 or 2017 ACS data; 2) The 2017 ACS data includes the institutionalized population (e.g. persons in prisons and group homes), while this population is not included in 1990 or 2000.

source:

<https://www.census.gov/people/disability/methodology/acs.html>

<https://www.census.gov/population/www/cen2000/90vs00/index.html>

The category Bachelor's Degree or Higher under the heading Educational Attainment Trends is a subset of the category High School Graduate or Higher.

---

## Metadata

- Community and Fraternal Centers [https://etdmpub.florida.gov/metadata/gc\\_communitycenter.htm](https://etdmpub.florida.gov/metadata/gc_communitycenter.htm)
- Correctional Facilities in Florida [https://etdmpub.florida.gov/metadata/gc\\_correctional.htm](https://etdmpub.florida.gov/metadata/gc_correctional.htm)
- Cultural Centers in Florida [https://etdmpub.florida.gov/metadata/gc\\_culturecenter.htm](https://etdmpub.florida.gov/metadata/gc_culturecenter.htm)
- Fire Department and Rescue Station Facilities in Florida [https://etdmpub.florida.gov/metadata/gc\\_firestat.htm](https://etdmpub.florida.gov/metadata/gc_firestat.htm)
- Local, State, and Federal Government Buildings in Florida [https://etdmpub.florida.gov/metadata/gc\\_govbuild.htm](https://etdmpub.florida.gov/metadata/gc_govbuild.htm)
- Florida Health Care Facilities [https://etdmpub.florida.gov/metadata/gc\\_health.htm](https://etdmpub.florida.gov/metadata/gc_health.htm)
- Hospital Facilities in Florida [https://etdmpub.florida.gov/metadata/gc\\_hospitals.htm](https://etdmpub.florida.gov/metadata/gc_hospitals.htm)
- Law Enforcement Facilities in Florida [https://etdmpub.florida.gov/metadata/gc\\_lawenforce.htm](https://etdmpub.florida.gov/metadata/gc_lawenforce.htm)
- Florida Parks and Recreational Facilities [https://etdmpub.florida.gov/metadata/gc\\_parks.htm](https://etdmpub.florida.gov/metadata/gc_parks.htm)
- Religious Centers [https://etdmpub.florida.gov/metadata/gc\\_religion.htm](https://etdmpub.florida.gov/metadata/gc_religion.htm)
- Florida Public and Private Schools [https://etdmpub.florida.gov/metadata/gc\\_schools.htm](https://etdmpub.florida.gov/metadata/gc_schools.htm)
- Social Service Centers [https://etdmpub.florida.gov/metadata/gc\\_socialservice.htm](https://etdmpub.florida.gov/metadata/gc_socialservice.htm)
- Assisted Rental Housing Units in Florida [https://etdmpub.florida.gov/metadata/gc\\_assisted\\_housing.htm](https://etdmpub.florida.gov/metadata/gc_assisted_housing.htm)
- Group Care Facilities <https://etdmpub.florida.gov/metadata/groupcare.htm>
- Mobile Home Parks in Florida [https://etdmpub.florida.gov/metadata/gc\\_mobilehomes.htm](https://etdmpub.florida.gov/metadata/gc_mobilehomes.htm)
- Migrant Camps in Florida <https://etdmpub.florida.gov/metadata/migrant.htm>
- Veteran Organizations and Facilities [https://etdmpub.florida.gov/metadata/gc\\_veterans.htm](https://etdmpub.florida.gov/metadata/gc_veterans.htm)
- Generalized Land Use - Florida DOT District 2 [https://etdmpub.florida.gov/metadata/d2\\_lu\\_gen.htm](https://etdmpub.florida.gov/metadata/d2_lu_gen.htm)
- Census Block Groups in Florida [https://etdmpub.florida.gov/metadata/e2\\_cenacs\\_cci.htm](https://etdmpub.florida.gov/metadata/e2_cenacs_cci.htm)
- 1990 Census Block Groups in Florida [https://etdmpub.florida.gov/metadata/e2\\_cenblkgrp\\_1990\\_cci.htm](https://etdmpub.florida.gov/metadata/e2_cenblkgrp_1990_cci.htm)
- 2000 Census Block Groups in Florida [https://etdmpub.florida.gov/metadata/e2\\_cenblkgrp\\_2000\\_cci.htm](https://etdmpub.florida.gov/metadata/e2_cenblkgrp_2000_cci.htm)
- 2010 Census Block Groups in Florida [https://etdmpub.florida.gov/metadata/e2\\_cenblkgrp\\_2010\\_cci.htm](https://etdmpub.florida.gov/metadata/e2_cenblkgrp_2010_cci.htm)