

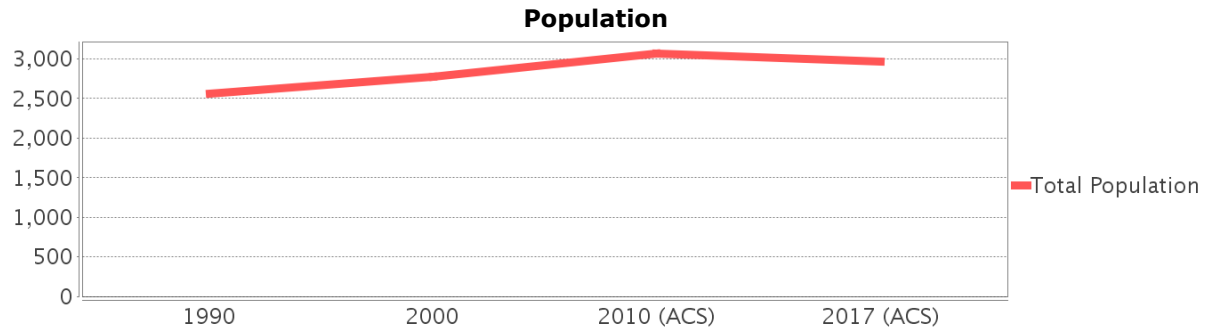
# Sociocultural Data Report

## Area of Interest BELLEVIEW - Alternative #1

**Area:** 3.84 square miles  
**Jurisdiction(s):** **Cities:** Belleview  
**Counties:** Marion

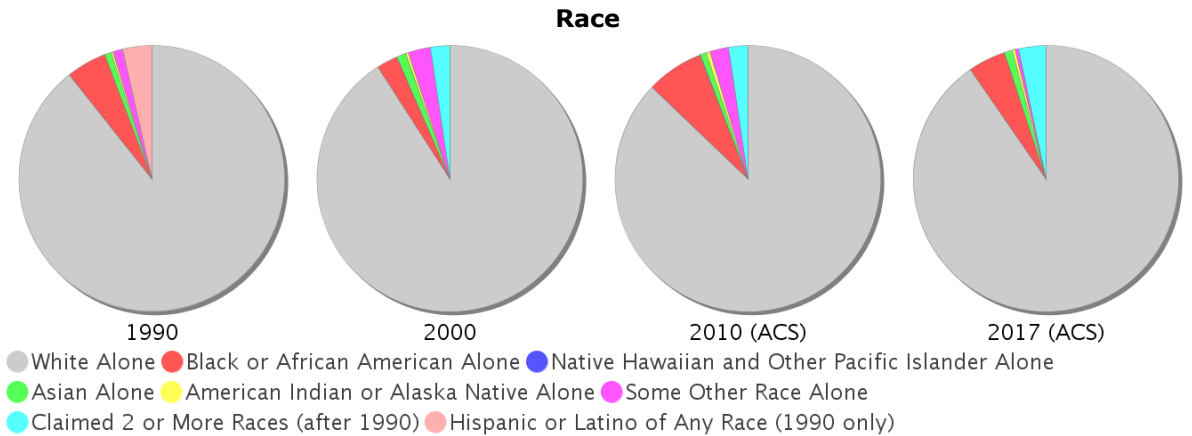
### General Population Trends

Description	1990	2000	2010 (ACS)	2017 (ACS)
Total Population	2,565	2,775	3,065	2,966
Total Households	1,072	1,165	1,294	1,163
Average Persons per Acre	1.18	1.07	1.18	1.13
Average Persons per Household	2.45	2.43	2.67	2.65
Average Persons per Family	2.88	2.95	3.00	3.43
Males	1,168	1,310	1,452	1,372
Females	1,398	1,466	1,613	1,594

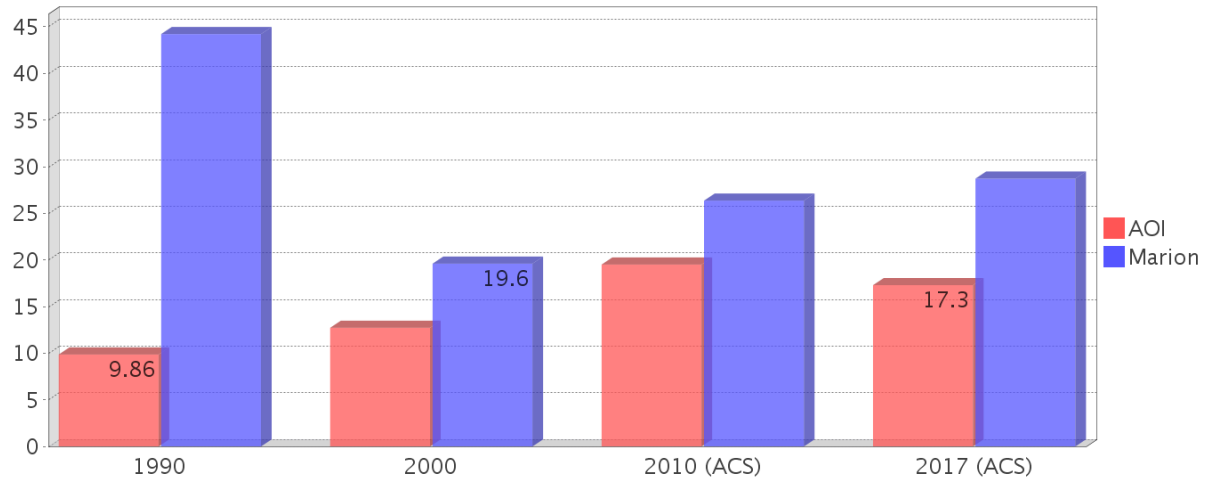


### Race and Ethnicity Trends

Description	1990	2000	2010 (ACS)	2017 (ACS)
White Alone	2,376 (92.63%)	2,521 (90.85%)	2,672 (87.18%)	2,679 (90.32%)
Black or African American Alone	130 (5.07%)	73 (2.63%)	213 (6.95%)	137 (4.62%)
Native Hawaiian and Other Pacific Islander Alone	0 (0.00%)	0 (0.00%)	3 (0.10%)	0 (0.00%)
Asian Alone	21 (0.82%)	31 (1.12%)	22 (0.72%)	28 (0.94%)
American Indian or Alaska Native Alone	8 (0.31%)	10 (0.36%)	16 (0.52%)	11 (0.37%)
Some Other Race Alone	30 (1.17%)	74 (2.67%)	69 (2.25%)	13 (0.44%)
Claimed 2 or More Races	NA (NA)	66 (2.38%)	72 (2.35%)	98 (3.30%)
Hispanic or Latino of Any Race	95 (3.70%)	162 (5.84%)	308 (10.05%)	293 (9.88%)
Not Hispanic or Latino	2,470 (96.30%)	2,613 (94.16%)	2,757 (89.95%)	2,673 (90.12%)
Minority	253 (9.86%)	353 (12.72%)	598 (19.51%)	513 (17.30%)



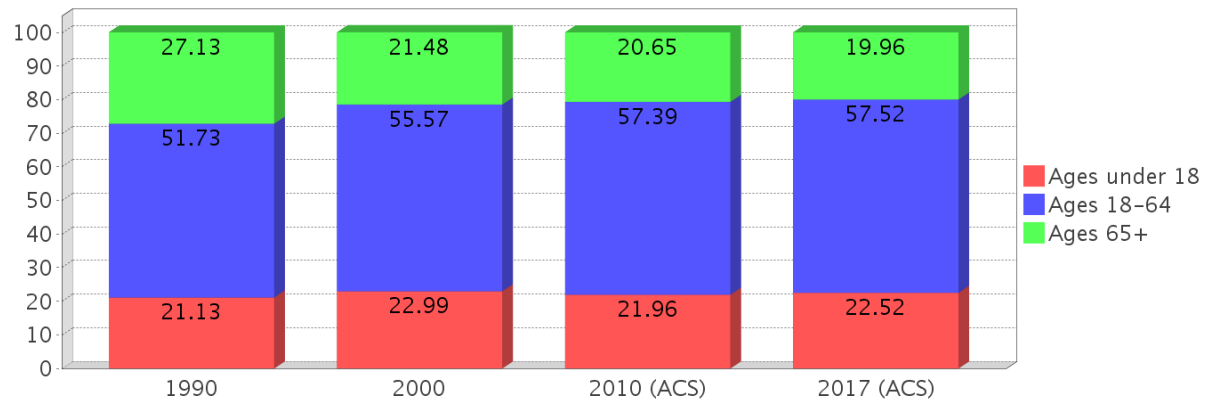
### Minority Percentage Population



### Age Trends

Description	1990	2000	2010 (ACS)	2017 (ACS)
Under Age 5	5.26%	5.73%	6.04%	7.01%
Ages 5-17	15.87%	17.26%	15.92%	15.51%
Ages 18-21	4.76%	4.90%	5.12%	3.98%
Ages 22-29	9.20%	6.99%	9.04%	10.89%
Ages 30-39	12.51%	13.30%	10.54%	9.71%
Ages 40-49	10.45%	14.02%	13.80%	9.84%
Ages 50-64	14.81%	16.36%	18.89%	23.10%
Age 65 and Over	27.13%	21.48%	20.65%	19.96%
-Ages 65-74	15.40%	9.77%	9.56%	9.91%
-Ages 75-84	9.04%	8.97%	7.24%	7.28%
-Age 85 and Over	2.69%	2.74%	3.85%	2.80%
Median Age	NA	40	43	45

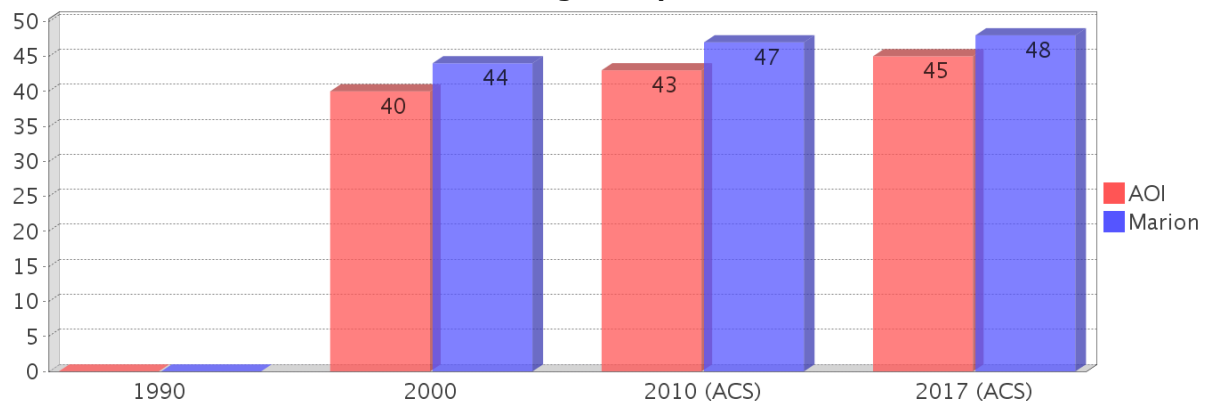
Percentage Population by Age Group



### Income Trends

Description	1990	2000	2010 (ACS)	2017 (ACS)
Median Household Income	\$19,531	\$30,282	\$38,291	\$42,628
Median Family Income	\$25,094	\$34,363	\$41,083	\$48,806
Population below Poverty Level	14.42%	11.24%	21.53%	20.33%
Households below Poverty Level	15.67%	12.27%	21.64%	21.84%
Households with Public Assistance Income	6.53%	3.43%	2.24%	0.17%

Median Age Comparison

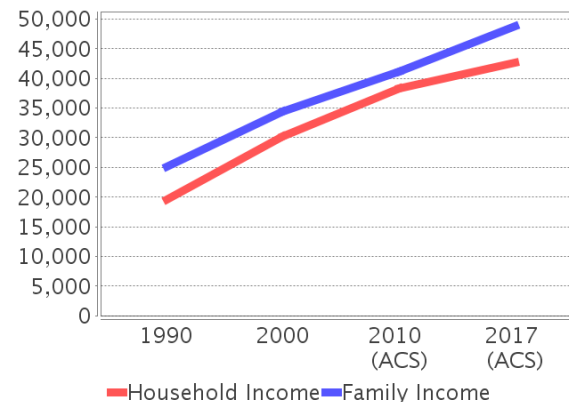


### Disability Trends

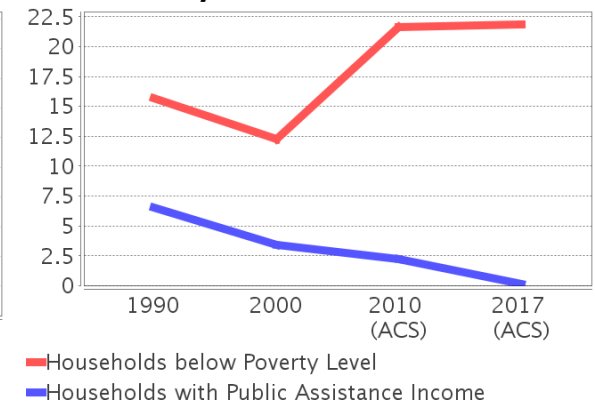
See the Data Sources section below for an explanation about the differences in disability data among the various years.

Description	1990	2000	2010 (ACS)	2017 (ACS)
Population 16 To 64 Years with a disability	134 (6.73%)	407 (15.58%)	(NA)	(NA)
Population 20 To 64 Years with a disability	(NA)	(NA)	(NA)	255 (15.24%)

Income Trends



Poverty and Public Assistance



## Educational Attainment Trends

Age 25 and Over

Description	1990	2000	2010 (ACS)	2017 (ACS)
Less than 9th Grade	296 (16.69%)	141 (7.27%)	102 (5.17%)	111 (5.51%)
9th to 12th Grade, No Diploma	389 (21.93%)	328 (16.91%)	314 (15.91%)	172 (8.53%)
High School Graduate or Higher	1,089 (61.39%)	1,471 (75.82%)	1,557 (78.92%)	1,733 (85.96%)
Bachelor's Degree or Higher	146 (8.23%)	189 (9.74%)	261 (13.23%)	266 (13.19%)

## Language Trends

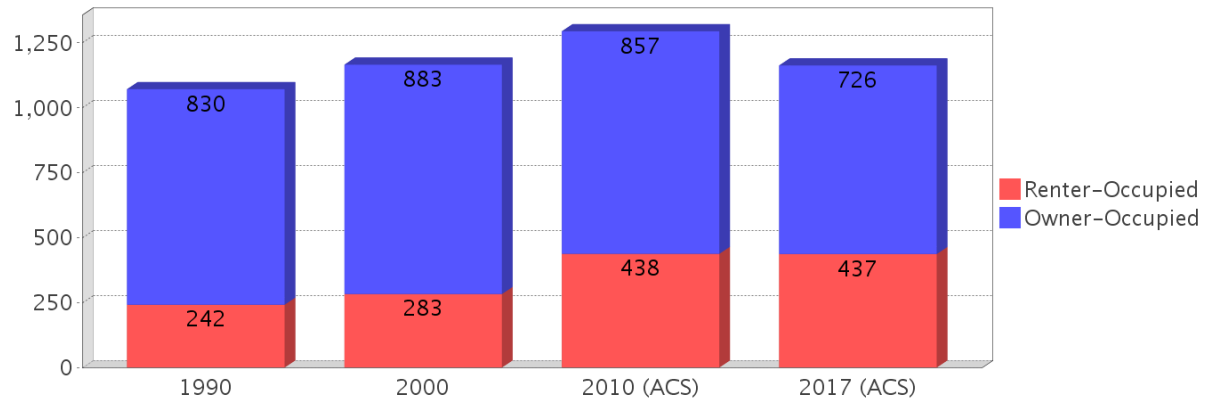
Age 5 and Over

Description	1990	2000	2010 (ACS)	2017 (ACS)
Speaks English Well	76 (3.20%)	44 (1.68%)	46 (1.68%)	47 (1.70%)
Speaks English Not Well	NA (NA)	20 (0.76%)	43 (1.57%)	44 (1.60%)
Speaks English Not at All	NA (NA)	10 (0.38%)	12 (0.44%)	3 (0.11%)
Speaks English Not Well or Not at All	56 (2.36%)	30 (1.15%)	55 (2.00%)	47 (1.70%)

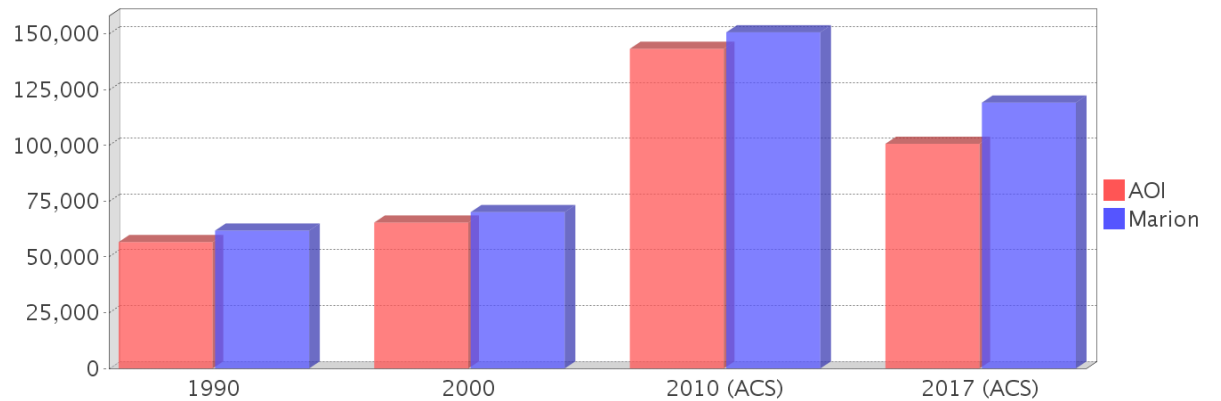
## Housing Trends

Description	1990	2000	2010 (ACS)	2017 (ACS)
Total	1,246	1,327	1,531	1,477
Units per Acre	0.59	0.59	0.76	0.74
Single-Family Units	739	862	922	983
Multi-Family Units	100	93	207	192
Mobile Home Units	223	364	302	279
Owner-Occupied Units	830	883	857	726
Renter-Occupied Units	242	283	438	437
Vacant Units	173	162	236	314
Median Housing Value	\$56,650	\$65,400	\$143,300	\$100,700
Occupied Housing Units w/No Vehicle	83 (7.74%)	81 (6.95%)	84 (6.49%)	111 (9.54%)

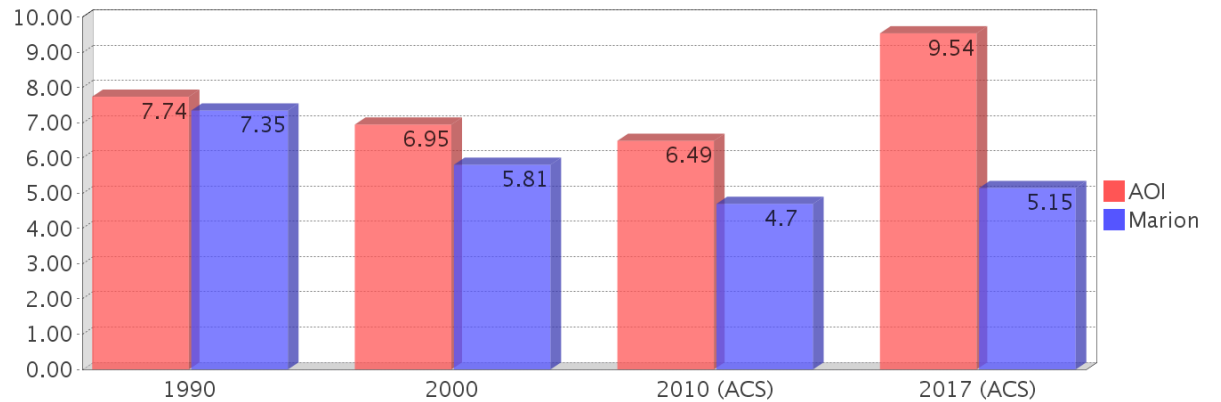
## Housing Tenure



## Median Housing Value Comparison

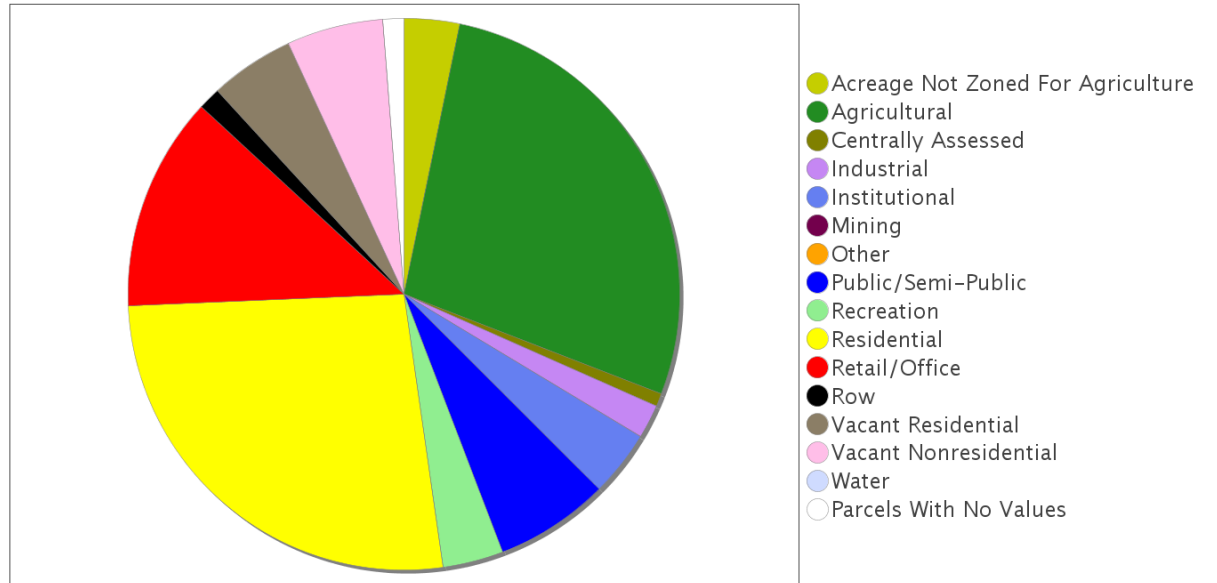


## Occupied Units With No Vehicles Available

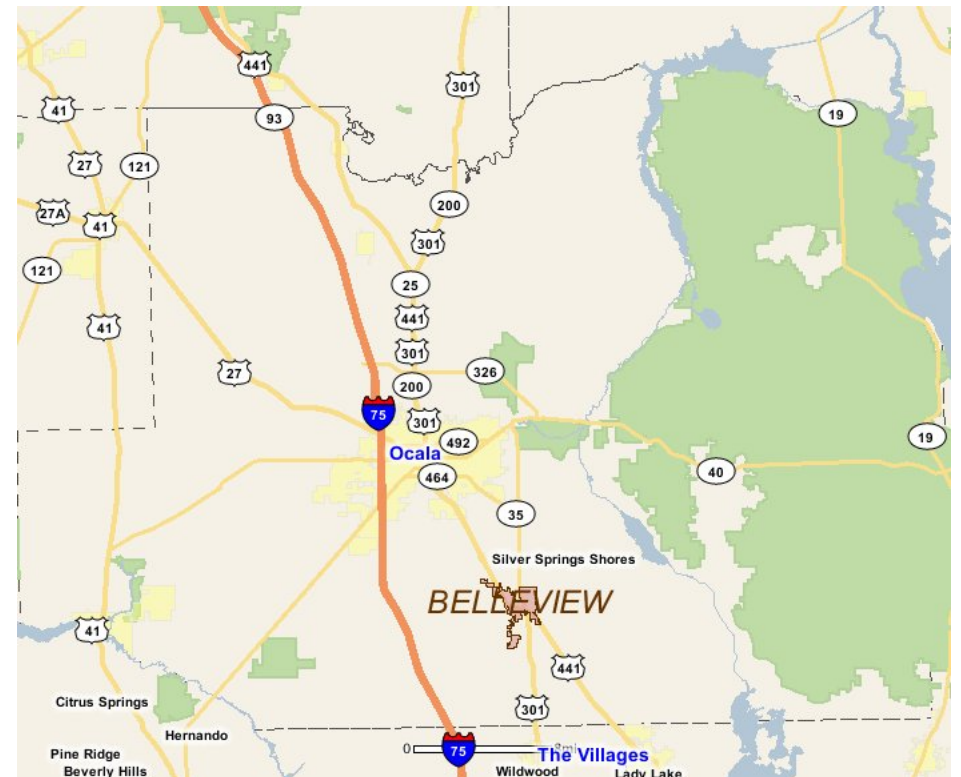
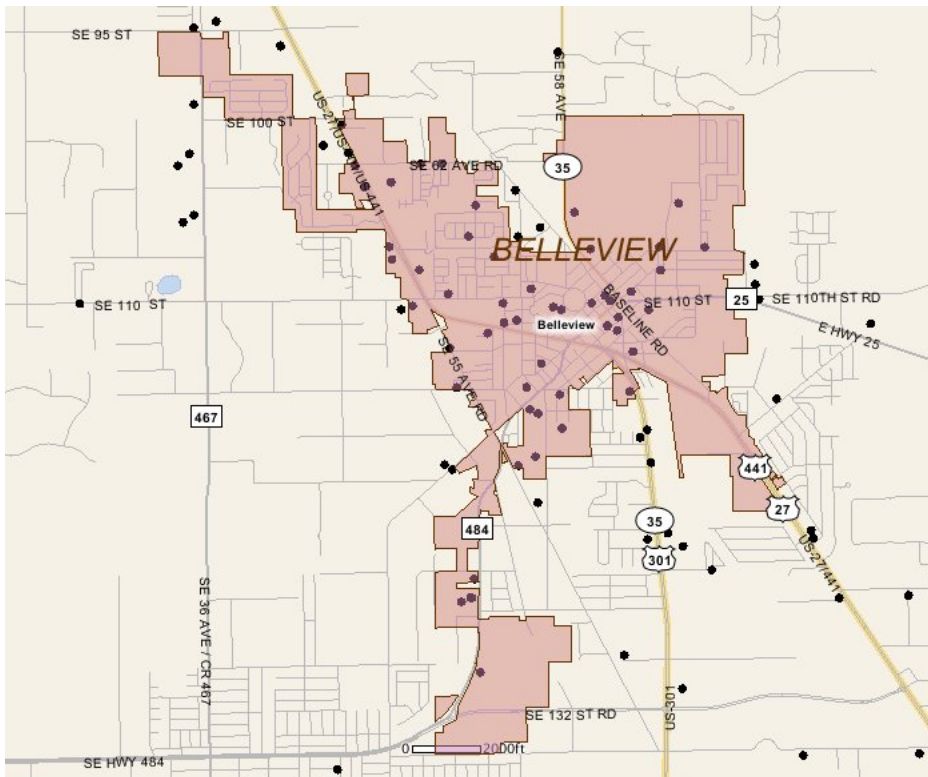


## Existing Land Use

Land Use Type	Acres	Percentage
Acreage Not Zoned For Agriculture	69	2.81%
Agricultural	590	24.01%
Centrally Assessed	16	0.65%
Industrial	43	1.75%
Institutional	82	3.34%
Mining	<0.5	<0.02%
Other	0	0.00%
Public/Semi-Public	143	5.82%
Recreation	76	3.09%
Residential	567	23.07%
Retail/Office	268	10.91%
Row	28	1.14%
Vacant Residential	105	4.27%
Vacant Nonresidential	121	4.92%
Water	<0.5	<0.02%
Parcels With No Values	26	1.06%



## Location Maps



---

## Community Facilities

The community facilities information below is useful in a variety of ways for environmental evaluations. These community resources should be evaluated for potential sociocultural effects, such as accessibility and relocation potential. The facility types may indicate the types of population groups present in the project study area. Facility staff and leaders can be sources of community information such as who uses the facility and how it is used. Additionally, community facilities are potential public meeting venues.

### Assisted Housing (Points)

Facility Name	Address	Zip Code
OAKBROOK VILLAS	11703 SE 57TH AVENUE	34420
MEADOWFIELD APTS	5155 SE 115TH ST	34420
WOODSIDE - BELLEVIEW	6745 S.E. 107TH STREET	34420

### Community Boundaries (User defined)

Facility Name
Shady Community

### Community Centers (Points)

Facility Name	Address	Zip Code
AMERICAN LEGION POST 284	5515 SE 109TH ST	34420
MARINE CORPS LEAGUE DETACHMENT 950	5515 SE 109TH ST	34420
GENERAL CASIMER PULASKI CITIZENS CLUB INC	6221 SE 113TH ST	34420
MASONIC LODGE - BELLEVIEW 95 F & AM	5871 SE BASELINE RD	34420
LIONS CLUB - BELLEVIEW	5850 SE LILLIAN CIRCLE	34420

### Cultural Centers (Points)

Facility Name	Address	Zip Code
BELLEVIEW PUBLIC LIBRARY	13145 SE HWY 484	34421
BELLEVIEW CINEMAS	10845 SE US HWY 441	34420

### Fire Stations (Points)

Facility Name	Address	Zip Code
MARION COUNTY FIRE DEPARTMENT AND RESCUE STATION 18 (BELLEVIEW)	11941 SE 55TH AVENUE RD	34420

### Florida Parks and Recreational Facilities (Points)

Facility Name	Address	Zip Code
CHEROKEE PARK	5641 SE 113TH PL	34420
LAKE LILLIAN PARK	5615 SE 110TH PL	34420
BELLEVIEW SPORTS COMPLEX	SE 67 AVE	34472
BELLEVIEW WOODS HIKING TRAIL & PARK	NO SITUS	34420

### Government Building

Facility Name	Address	Zip Code
MARION COUNTY TAX COLLECTOR - BELLEVIEW BRANCH	10445US 441	34420
CITY OF BELLEVIEW CITY HALL	5343 SE ABSHIER BLVD	34420

### Healthcare Facilities (Geocoded)

Facility Name	Address	Zip Code
BELLEVIEW MEDICAL CENTER	6108 SE FRONT ROAD	34420
FAMILY CARE SPECIALISTS	4850 SE 110TH STREET	34420
FAMILY CARE SPECIALISTS	10696 SE HWY 441 HIGHWAY	34420
EXPRESS CARE OF BELLEVIEW INC.	10762 S HWY 441 HIGHWAY	34420
THE VILLAGES HEALTH - BELLEVIEW CARE CENTER	5051 SE 110TH STREET	34420
CENTRAL FLORIDA HEART GROUP P.A.	5425 SE 111TH STREET	34420

### Law Enforcement Facilities (Points)

Facility Name	Address	Zip Code
BELLEVUE POLICE DEPARTMENT	5350 SE 110TH ST	34420

### Mobile Home Parks in Florida

Facility Name	Address	Zip Code
COMPTON MOBILE HOME PARK	5086 SE 102ND PL	34420
GREEN OAKS MANOR	6407 SE 108TH ST	34420
SILVER OAKS CAMPGROUND	10366 SE US HWY 441	34420
GATEWAY MHP	10468 SE 52ND COURT	34420
PAR I MOBILE HOME PARK	6220 SE HAMES RD	34420
GOLDEN OAKS MH COMMUNITY	4900 SE 102ND PL	34420

### Public and Private Schools (Points)

Facility Name	Address	Zip Code
LIFESPAN BEHAVIOR SERVICES LLC	10252 S US HWY 441 UNITS 3 4	34420
BELLEVUE ELEMENTARY SCHOOL	5556 SE HWY 484	34420
TAYLOR COLLEGE	5190 SE 125TH STREET	34420
SOULS HARBOR CHRISTIAN ACADEMY	12650 SE HIGHWAY 484	34420
LITTLE FRIENDS CHRISTIAN SCHOOL	6107 SE AGNEW ROAD	34420

### Religious Centers (Points)

Facility Name	Address	Zip Code
BELLEVUE UNITED METHODIST CHURCH	5207 SOUTHEAST 106TH LANE	34420
BELLEVUE UNITED METHODIST CHURCH	5640 SE BROWN ROAD	34420
FIRST BAPTIST CHURCH, BELLEVUE	6107 SE AGNEW RD	34420
ST THERESA CATHOLIC CHURCH	11528 SE US HIGHWAY 301	34420
SOULS HARBOR FIRST PENTECOSTAL CHURCH	12650 SE HWY 484	34420
ST MARY'S EPISCOPAL CHURCH	5750 SE 115TH STREET	34420
RAMAH BAPTIST CHURCH	10545 SOUTHEAST 58TH AVENUE	34420
ST PAUL'S POLISH NATL CHURCH	5245 SE 112TH STREET	34420
CHURCH OF GOD INTERNATIONAL	11036 SE 62ND AVE	34420
CHURCH OF GOD BELLEVUE	6419 SE 107TH STREET	34420
SHILOH BAPTIST CHURCH OF BELLEVUE	5930 SE ROBINSON RD	34420

### US Census Places

Facility Name
Bellevue

### Veteran Organizations and Facilities (Points)

Facility Name	Address	Zip Code
MARINE CORPS LEAGUE DETACHMENT 950	5515 SE 109TH STREET	34420
AMERICAN LEGION POST 284	5515 SE 109TH STREET	34420

---

## Block Groups

The following Census Block Groups were used to calculate demographics for this report.

### 1990 Census Block Groups

120830011012, 120830011022, 120830011021, 120830011011, 120830011013, 120830009012, 120830011023, 120830008001

### 2000 Census Block Groups

120830011021, 120830008001, 120830011012, 120830011011, 120830011022, 120830011013, 120830009012

### 2010 Census Block Groups

120830009012, 120830011021, 120830011044, 120830008022, 120830011042, 120830011031, 120830011043, 120830011022, 120830011041

### 2017 Census Block Groups

120830011042, 120830011031, 120830009012, 120830011044, 120830011021, 120830011022, 120830008022, 120830011043, 120830011041

---

## Data Sources

### Area

The geographic area of the community based on a user-specified community boundary or area of interest (AOI) boundary.

### Jurisdiction

Jurisdiction(s) includes local government boundaries that intersect the community or AOI boundary.

### Demographic Data

Demographic data reported under the headings General Population Trends, Race and Ethnicity Trends, Age Trends, Income Trends, Educational Attainment Trends, Language Trends, and Housing Trends is from the U.S. Decennial Census (1990, 2000) and the American Community Survey (ACS) 5-year estimates from 2006-2010 and 2013-2017. The data was gathered at the block group level for user-specified community boundaries and AOIs, and at the county level for counties. Depending on the dataset, the data represents 100% counts (Census Summary File 1) or sample-based information (Census Summary File 3 or ACS).

### About the Census Data:

User-specified community boundaries and AOIs do not always correspond precisely to block group boundaries. In these instances, adjustment of the geographic area and data for affected block groups is required to estimate the actual population. To improve the accuracy of such estimates in the SDR report, the census block group data was adjusted to exclude all census blocks with a population of two or fewer. These areas were eliminated from the corresponding years' block groups. Next, the portion of the block group that lies outside of the community or AOI boundary was removed. The demographics within each block group were then recalculated, assuming an equal area distribution of the population. Note that there may be areas where there is no population.

Use caution when comparing the 100% count data (Decennial Census) to the sample-based data (ACS). In any given year, about one in 40 or 2.5% of U.S. households will receive the ACS questionnaire. Over any five-year period, about one in eight households will receive the questionnaire, as compared to about one in six that received the long form

questionnaire for the Decennial Census 2000. (Source: <http://mcdc.missouri.edu/pub/data/acs/Readme.shtml>) The U.S. Census Bureau provides help with this process:

<https://www.census.gov/programs-surveys/acs/guidance/comparing-acs-data/2017.html>

Use caution when interpreting changes in Race and Ethnicity over time. Starting with the 2000 Decennial Census, respondents were given a new option of selecting one or more race categories. Also in 2000, the placement of the question about Hispanic origin changed, helping to increase responsiveness to the Hispanic-origin question. Because of these and other changes, the 1990 data on race and ethnicity are not directly comparable with data from later censuses. (Source: <http://www.census.gov/prod/2001pubs/c2kbr01-1.pdf>; <http://www.census.gov/pred/www/rpts/Race%20and%20Ethnicity%20FINAL%20report.pdf>)

The "Minority" calculations are derived from Census and ACS data using both the race and ethnicity responses. On this report, "Minority" refers to individuals who list a race other than White and/or list their ethnicity as Hispanic/Latino. In other words, people who are multi-racial, any single race other than White, or Hispanic/Latino of any race are considered minorities.

Disability data is not included in the 2010 Decennial Census, or the 2006-2010 ACS. This data is available in the 2013-2017 ACS.

Because of changes made to the Census and ACS questions between 1990 and 2017, disability variables should not be compared from year to year. For example: 1) With the 1990 data the disabilities are listed as a "work disability" while this distinction is not made with 2000 or 2017 ACS data; 2) The 2017 ACS data includes the institutionalized population (e.g. persons in prisons and group homes), while this population is not included in 1990 or 2000; 3) the age groupings changed over the years.

Please take the following two concerns into account when viewing this data: 1) With the 1990 data the disabilities are listed as a "work disability" while this distinction is not made with 2000 or 2017 ACS data; 2) The 2017 ACS data includes the institutionalized population (e.g. persons in prisons and group homes), while this population is not included in 1990 or 2000.

The category Bachelor's Degree or Higher under the heading Educational Attainment Trends is a subset of the category High School Graduate or Higher.

Income of households. This includes the income of the householder and all other individuals 15 years old and over in the household, whether they are related to the householder or not. Because many households consist of only one person, average household income is usually less than average family income.

Income of families. In compiling statistics on family income, the incomes of all members 15 years old and over related to the householder are summed and treated as a single amount.

Age Trends median age for 1990 is not available.

### **Land Use Data**

The Land Use information Indicates acreages and percentages for the generalized land use types used to group parcel-specific, existing land use assigned by the county property appraiser office according to the Florida Department of Revenue land use codes.

### **Community Facilities Data**

- Assisted Rental Housing Units - Identifies multifamily rental developments that receive funding assistance under federal, state, and local government programs to offer affordable housing as reported by the Shimberg Center for Housing Studies, University of Florida.
- Mobile Home Parks - Identifies approved or acknowledged mobile home parks reported by the Florida Department of Business and Professional Regulation and Florida Department of Health.

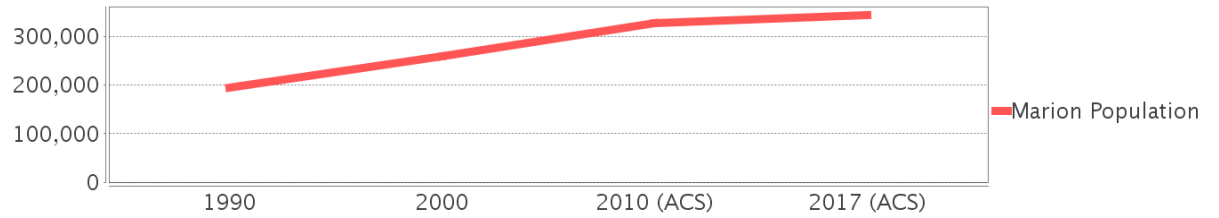
- Migrant Camps - Identifies migrant labor camp facilities inspected by the Florida Department of Health.
- Group Care Facilities - Identifies group care facilities inspected by the Florida Department of Health.
- Community Center and Fraternal Association Facilities - Identifies facilities reported by multiple sources.
- Law Enforcement Correctional Facilities - Identifies facilities reported by multiple sources.
- Cultural Centers - Identifies cultural centers including organizations, buildings, or complexes that promote culture and arts (e.g., aquariums and zoological facilities; arboreta and botanical gardens; dinner theaters; drive-ins; historical places and services; libraries; motion picture theaters; museums and art galleries; performing arts centers; performing arts theaters; planetariums; studios and art galleries; and theater producers stage facilities) reported by multiple sources.
- Fire Department and Rescue Station Facilities - Identifies facilities reported by multiple sources.
- Government Buildings - Identifies local, state, and federal government buildings reported by multiple sources.
- Health Care Facilities - Identifies health care facilities including abortion clinics, dialysis clinics, medical doctors, nursing homes, osteopaths, state laboratories/clinics, and surgicenters/walk-in clinics reported by the Florida Department of Health.
- Hospital Facilities - Identifies hospital facilities reported by multiple sources.
- Law Enforcement Facilities - Identifies law enforcement facilities reported by multiple sources.
- Parks and Recreational Facilities - Identifies parks and recreational facilities reported by multiple sources.
- Religious Center Facilities - Identifies religious centers including churches, temples, synagogues, mosques, chapels, centers, and other types of religious facilities reported by multiple sources.
- Private and Public Schools - Identifies private and public schools reported by multiple sources.
- Social Service Centers - Identifies social service centers reported by multiple sources.
- Veteran Organizations and Facilities

# Marion County Demographic Profile

## General Population Trends - Marion

Description	1990	2000	2010 (ACS)	2017 (ACS)
Total Population	194,833	258,916	326,833	343,778
Total Households	78,177	106,755	133,966	134,747
Average Persons per Acre	0.183	0.243	0.307	0.323
Average Persons per Household	2.492	2.362	2.00	2.48
Average Persons per Family	2.905	2.858	2.94	3.155
Males	93,813	124,493	157,123	164,984
Females	101,020	134,423	169,710	178,794

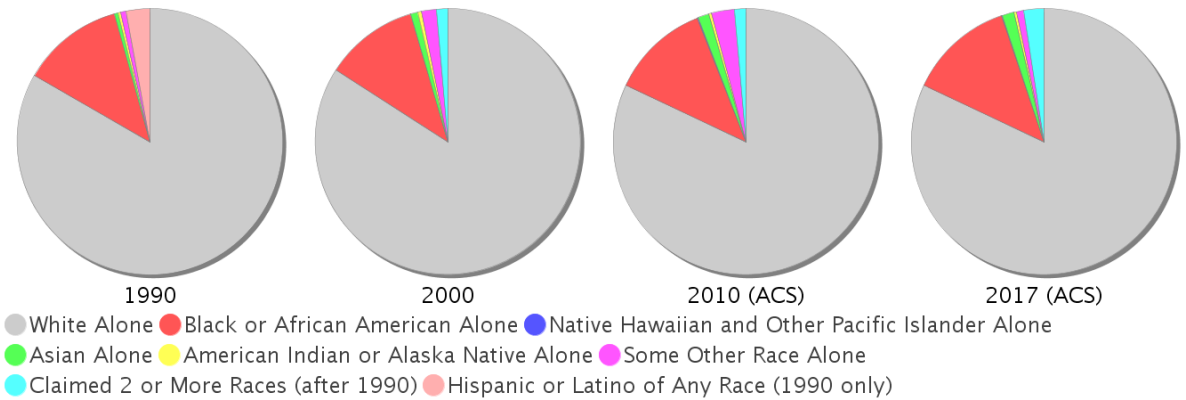
Marion County Population



## Race and Ethnicity Trends - Marion

Description	1990	2000	2010 (ACS)	2017 (ACS)
White Alone	167,094 (85.76%)	217,676 (84.07%)	267,887 (81.96%)	281,763 (81.96%)
Black or African American Alone	24,844 (12.75%)	29,401 (11.36%)	39,469 (12.08%)	44,237 (12.87%)
Native Hawaiian and Other Pacific Islander Alone	(NA)	52 (0.02%)	303 (0.09%)	222 (0.06%)
Asian Alone	919 (0.47%)	2,221 (0.86%)	4,439 (1.36%)	5,129 (1.49%)
American Indian or Alaska Native Alone	638 (0.33%)	1,314 (0.51%)	1,113 (0.34%)	1,080 (0.31%)
Some Other Race Alone	1,312 (0.67%)	4,572 (1.77%)	8,946 (2.74%)	2,755 (0.80%)
Claimed 2 or More Races	(NA)	3,680 (1.42%)	4,676 (1.43%)	8,592 (2.50%)
Hispanic or Latino of Any Race	5,860 (3.01%)	15,535 (6.00%)	33,360 (10.21%)	42,467 (12.35%)
Not Hispanic or Latino	188,973 (96.99%)	243,381 (94.00%)	293,473 (89.79%)	301,311 (87.65%)
Minority	86,162 (44.22%)	50,741 (19.60%)	86,162 (26.36%)	98,733 (28.72%)

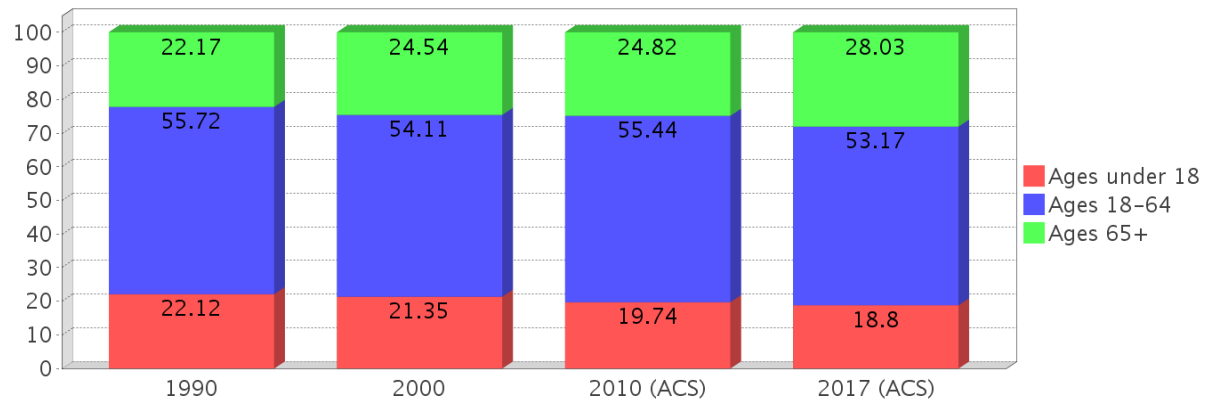
Marion County Race



### Age Trends - Marion

Description	1990	2000	2010 (ACS)	2017 (ACS)
Under Age 5	6.32%	5.05%	5.29%	5.01%
Ages 5-17	15.80%	16.30%	14.45%	13.78%
Ages 18-21	4.46%	3.82%	4.27%	3.91%
Ages 22-29	9.92%	7.16%	7.79%	8.51%
Ages 30-39	13.55%	12.45%	9.90%	9.79%
Ages 40-49	11.26%	13.05%	12.75%	10.86%
Ages 50-64	16.52%	17.64%	20.72%	20.10%
Age 65 and Over	22.17%	24.54%	24.82%	28.03%
-Ages 65-74	14.45%	13.62%	13.65%	15.50%
-Ages 75-84	6.39%	8.91%	8.57%	9.39%
-Age 85 and Over	1.33%	2.01%	2.61%	3.14%
Median Age	NA	44	47	48

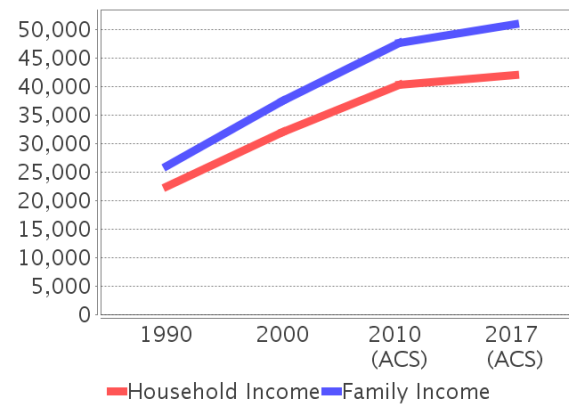
Percentage Population by Age Group - Marion



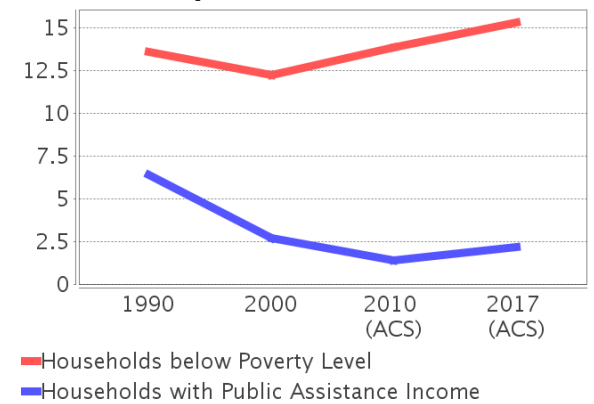
### Income Trends - Marion

Description	1990	2000	2010 (ACS)	2017 (ACS)
Median Household Income	\$22,452	\$31,944	\$40,339	\$41,964
Median Family Income	\$26,089	\$37,473	\$47,614	\$50,922
Population below Poverty Level	14.58%	13.08%	15.27%	17.60%
Households below Poverty Level	13.60%	12.22%	13.82%	15.29%
Households with Public Assistance Income	6.39%	2.69%	1.41%	2.16%

Income Trends



Poverty and Public Assistance



### Disability Trends - Marion

See the Data Sources section below for an explanation about the differences in disability data among the various years.

Description	1990	2000	2010 (ACS)	2017 (ACS)
Population 16 To 64 Years with a disability	14,066 (9.20%)	35,374 (14.73%)	NA (NA)	NA (NA)
Population 20 To 64 Years with a disability	NA (NA)	NA (NA)	NA (NA)	24,841 (14.64%)

## Educational Attainment Trends - Marion

Age 25 and Over

Description	1990	2000	2010 (ACS)	2017 (ACS)
Less than 9th Grade	13,638 (9.95%)	11,414 (6.10%)	10,981 (4.60%)	9,296 (3.64%)
9th to 12th Grade, No Diploma	28,046 (20.47%)	29,399 (15.71%)	26,177 (10.95%)	24,472 (9.59%)
High School Graduate or Higher	95,317 (69.57%)	146,374 (78.20%)	201,804 (84.45%)	221,436 (86.77%)
Bachelor's Degree or Higher	15,765 (11.51%)	25,626 (13.69%)	40,778 (17.06%)	49,412 (19.36%)

## Language Trends - Marion

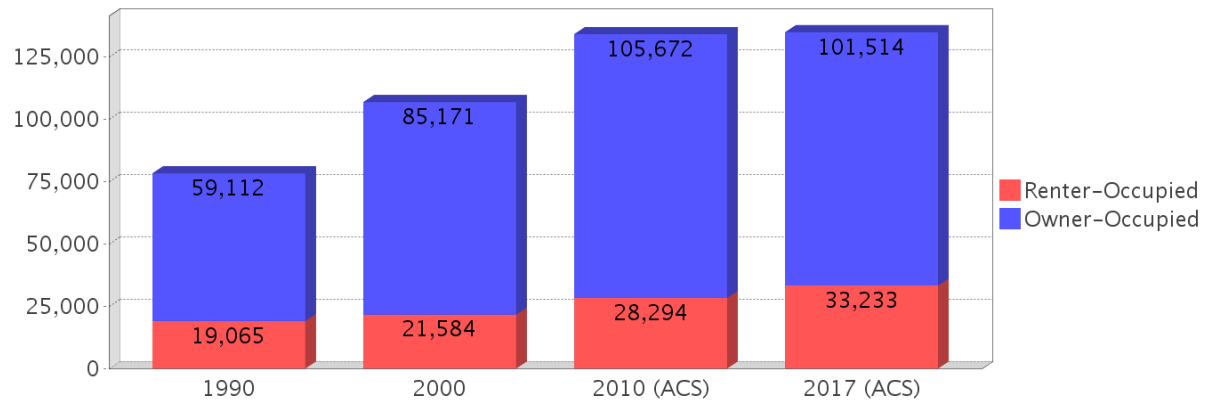
Age 5 and Over

Description	1990	2000	2010 (ACS)	2017 (ACS)
Speaks English Well	2,695 (1.48%)	4,123 (1.68%)	6,878 (2.22%)	6,659 (2.04%)
Speaks English Not Well	NA (NA)	2,830 (1.15%)	4,723 (1.53%)	3,328 (1.02%)
Speaks English Not at All	NA (NA)	812 (0.33%)	1,744 (0.56%)	1,110 (0.34%)
Speaks English Not Well or Not at All	1,523 (0.83%)	3,642 (1.48%)	6,467 (2.09%)	4,438 (1.36%)

## Housing Trends - Marion

Description	1990	2000	2010 (ACS)	2017 (ACS)
Total	94,567	122,663	161,264	166,357
Units per Acre	0.089	0.115	0.152	0.156
Single-Family Units	47,000	75,857	108,996	114,452
Multi-Family Units	8,581	11,542	16,063	16,167
Mobile Home Units	22,130	34,455	35,841	35,531
Owner-Occupied Units	59,112	85,171	105,672	101,514
Renter-Occupied Units	19,065	21,584	28,294	33,233
Vacant Units	16,390	15,908	27,298	31,610
Median Housing Value	\$61,800	\$70,100	\$150,700	\$119,200
Occupied Housing Units w/No Vehicle	5,743 (7.35%)	6,206 (5.81%)	6,295 (4.70%)	6,935 (5.15%)

## Housing Tenure - Marion



---

## County Data Sources

Demographic data reported is from the U.S. Decennial Census (1990, 2000) and the American Community Survey (ACS) 5-year estimates from 2006-2010 and 2013-2017. The data was gathered at the county level. Depending on the dataset, the data represents 100% counts (Census Summary File 1) or sample-based information (Census Summary File 3 or ACS).

### About the Census Data:

Use caution when comparing the 100% count data (Decennial Census) to the sample-based data (ACS). In any given year, about one in 40 or 2.5% of U.S. households will receive the ACS questionnaire. Over any five-year period, about one in eight households will receive the questionnaire, as compared to about one in six that received the long form questionnaire for the Decennial Census 2000. (Source: <http://mcdc.missouri.edu/pub/data/acs/Readme.shtml>) The U.S. Census Bureau provides help with this process:

<https://www.census.gov/programs-surveys/acs/guidance/comparing-acs-data/2017.html>

Use caution when interpreting changes in Race and Ethnicity over time. Starting with the 2000 Decennial Census, respondents were given a new option of selecting one or more race categories. Also in 2000, the placement of the question about Hispanic origin changed, helping to increase responsiveness to the Hispanic-origin question. Because of these and other changes, the 1990 data on race and ethnicity are not directly comparable with data from later censuses. (Source: <http://www.census.gov/prod/2001pubs/c2kbr01-1.pdf>; <http://www.census.gov/pred/www/rpts/Race%20and%20Ethnicity%20FINAL%20report.pdf>)

The "Minority" calculations are derived from Census and ACS data using both the race and ethnicity responses. On this report, "Minority" refers to individuals who list a race other than White and/or list their ethnicity as Hispanic/Latino. In other words, people who are multi-racial, any single race other than White, or Hispanic/Latino of any race are considered minorities.

Disability data is not included in the 2010 Decennial Census, or the 2006-2010 ACS. This data is available in the 2013-2017 ACS.

Because of changes made to the Census and ACS questions between 1990 and 2017, disability variables should not be compared from year to year. For example: 1) With the 1990 data the disabilities are listed as a "work disability" while this distinction is not made with 2000 or 2017 ACS data; 2) The 2017 ACS data includes the institutionalized population (e.g. persons in prisons and group homes), while this population is not included in 1990 or 2000; 3) the age groupings changed over the years.

Please take the following two concerns into account when viewing this data: 1) With the 1990 data the disabilities are listed as a "work disability" while this distinction is not made with 2000 or 2017 ACS data; 2) The 2017 ACS data includes the institutionalized population (e.g. persons in prisons and group homes), while this population is not included in 1990 or 2000.

source:

<https://www.census.gov/people/disability/methodology/acs.html>

<https://www.census.gov/population/www/cen2000/90vs00/index.html>

The category Bachelor's Degree or Higher under the heading Educational Attainment Trends is a subset of the category High School Graduate or Higher.

---

## Metadata

- Community and Fraternal Centers [https://etdmpub.florida-estat.org/metadata/gc\\_communitycenter.htm](https://etdmpub.florida-estat.org/metadata/gc_communitycenter.htm)
- Correctional Facilities in Florida [https://etdmpub.florida-estat.org/metadata/gc\\_correctional.htm](https://etdmpub.florida-estat.org/metadata/gc_correctional.htm)
- Cultural Centers in Florida [https://etdmpub.florida-estat.org/metadata/gc\\_culturecenter.htm](https://etdmpub.florida-estat.org/metadata/gc_culturecenter.htm)
- Fire Department and Rescue Station Facilities in Florida [https://etdmpub.florida-estat.org/metadata/gc\\_firestat.htm](https://etdmpub.florida-estat.org/metadata/gc_firestat.htm)
- Local, State, and Federal Government Buildings in Florida [https://etdmpub.florida-estat.org/metadata/gc\\_govbuild.htm](https://etdmpub.florida-estat.org/metadata/gc_govbuild.htm)
- Florida Health Care Facilities [https://etdmpub.florida-estat.org/metadata/gc\\_health.htm](https://etdmpub.florida-estat.org/metadata/gc_health.htm)
- Hospital Facilities in Florida [https://etdmpub.florida-estat.org/metadata/gc\\_hospitals.htm](https://etdmpub.florida-estat.org/metadata/gc_hospitals.htm)
- Law Enforcement Facilities in Florida [https://etdmpub.florida-estat.org/metadata/gc\\_lawenforce.htm](https://etdmpub.florida-estat.org/metadata/gc_lawenforce.htm)
- Florida Parks and Recreational Facilities [https://etdmpub.florida-estat.org/metadata/gc\\_parks.htm](https://etdmpub.florida-estat.org/metadata/gc_parks.htm)
- Religious Centers [https://etdmpub.florida-estat.org/metadata/gc\\_religion.htm](https://etdmpub.florida-estat.org/metadata/gc_religion.htm)
- Florida Public and Private Schools [https://etdmpub.florida-estat.org/metadata/gc\\_schools.htm](https://etdmpub.florida-estat.org/metadata/gc_schools.htm)
- Social Service Centers [https://etdmpub.florida-estat.org/metadata/gc\\_socialservice.htm](https://etdmpub.florida-estat.org/metadata/gc_socialservice.htm)
- Assisted Rental Housing Units in Florida [https://etdmpub.florida-estat.org/metadata/gc\\_assisted\\_housing.htm](https://etdmpub.florida-estat.org/metadata/gc_assisted_housing.htm)
- Group Care Facilities <https://etdmpub.florida-estat.org/metadata/groupcare.htm>
- Mobile Home Parks in Florida [https://etdmpub.florida-estat.org/metadata/gc\\_mobilehomes.htm](https://etdmpub.florida-estat.org/metadata/gc_mobilehomes.htm)
- Migrant Camps in Florida <https://etdmpub.florida-estat.org/metadata/migrant.htm>
- Veteran Organizations and Facilities [https://etdmpub.florida-estat.org/metadata/gc\\_veterans.htm](https://etdmpub.florida-estat.org/metadata/gc_veterans.htm)
- Generalized Land Use - Florida DOT District 5 [https://etdmpub.florida-estat.org/metadata/d5\\_lu\\_gen.htm](https://etdmpub.florida-estat.org/metadata/d5_lu_gen.htm)
- Census Block Groups in Florida [https://etdmpub.florida-estat.org/metadata/e2\\_cenacs\\_cci.htm](https://etdmpub.florida-estat.org/metadata/e2_cenacs_cci.htm)
- 1990 Census Block Groups in Florida [https://etdmpub.florida-estat.org/metadata/e2\\_cenblkgrp\\_1990\\_cci.htm](https://etdmpub.florida-estat.org/metadata/e2_cenblkgrp_1990_cci.htm)
- 2000 Census Block Groups in Florida [https://etdmpub.florida-estat.org/metadata/e2\\_cenblkgrp\\_2000\\_cci.htm](https://etdmpub.florida-estat.org/metadata/e2_cenblkgrp_2000_cci.htm)
- 2010 Census Block Groups in Florida [https://etdmpub.florida-estat.org/metadata/e2\\_cenblkgrp\\_2010\\_cci.htm](https://etdmpub.florida-estat.org/metadata/e2_cenblkgrp_2010_cci.htm)