

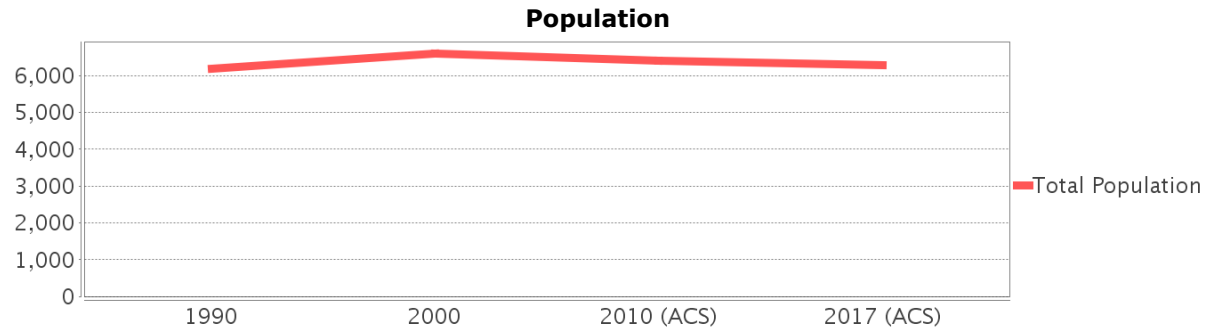
Sociocultural Data Report

Area of Interest DADE CITY - Alternative #1

Area: 6.136 square miles
Jurisdiction(s): Cities: Dade City
 Counties: Pasco

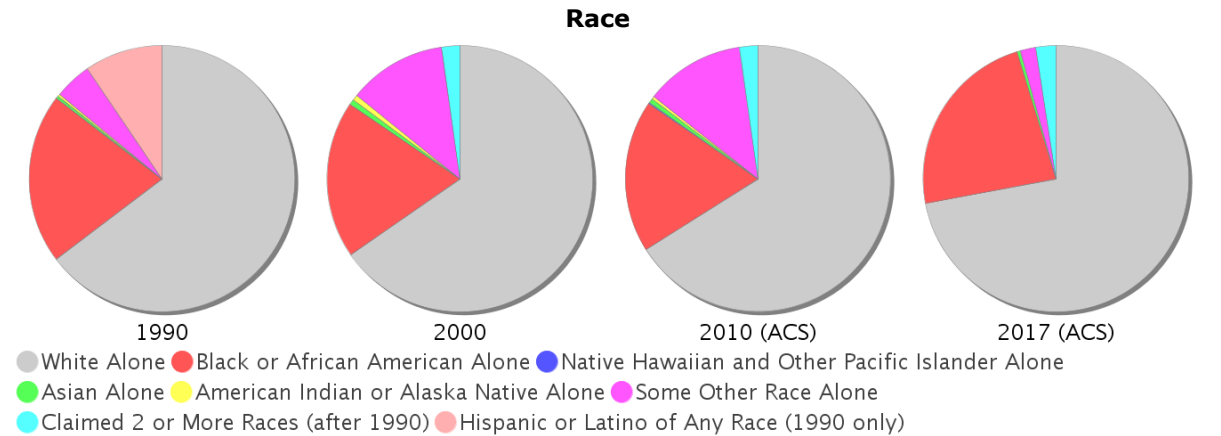
General Population Trends

Description	1990	2000	2010 (ACS)	2017 (ACS)
Total Population	6,189	6,594	6,410	6,287
Total Households	2,241	2,449	2,401	2,358
Average Persons per Acre	2.12	2.01	1.62	1.61
Average Persons per Household	2.89	2.74	2.67	2.64
Average Persons per Family	3.28	3.35	3.13	3.23
Males	2,874	3,203	3,021	2,996
Females	3,315	3,391	3,389	3,291

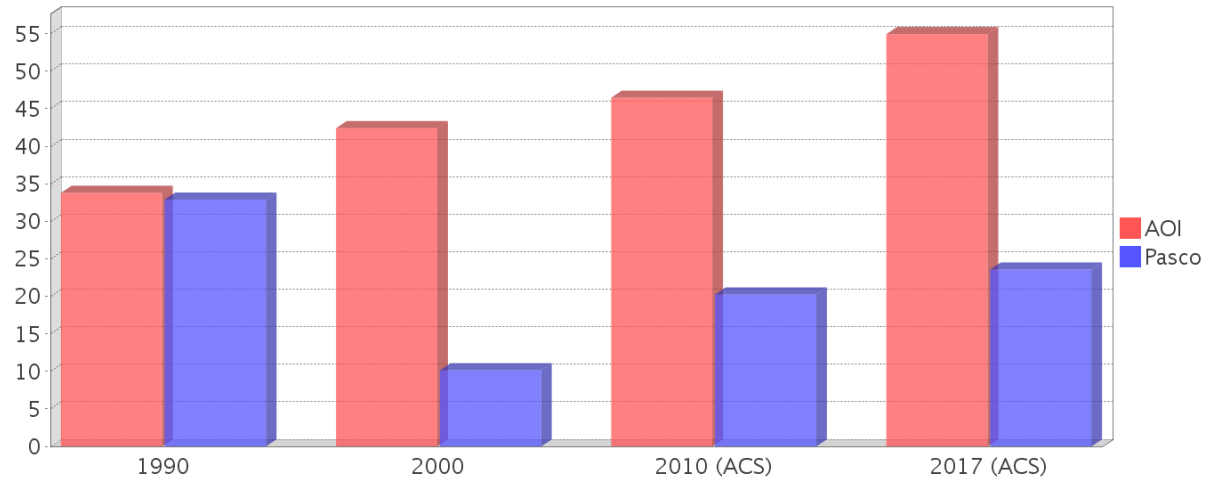


Race and Ethnicity Trends

Description	1990	2000	2010 (ACS)	2017 (ACS)
White Alone	4,423 (71.47%)	4,309 (65.35%)	4,233 (66.04%)	4,526 (71.99%)
Black or African American Alone	1,415 (22.86%)	1,262 (19.14%)	1,188 (18.53%)	1,463 (23.27%)
Native Hawaiian and Other Pacific Islander Alone	1 (0.02%)	0 (0.00%)	8 (0.12%)	0 (0.00%)
Asian Alone	23 (0.37%)	41 (0.62%)	36 (0.56%)	23 (0.37%)
American Indian or Alaska Native Alone	18 (0.29%)	45 (0.68%)	21 (0.33%)	0 (0.00%)
Some Other Race Alone	308 (4.98%)	792 (12.01%)	778 (12.14%)	120 (1.91%)
Claimed 2 or More Races	NA (NA)	145 (2.20%)	146 (2.28%)	154 (2.45%)
Hispanic or Latino of Any Race	651 (10.52%)	1,374 (20.84%)	1,697 (26.47%)	1,988 (31.62%)
Not Hispanic or Latino	5,538 (89.48%)	5,220 (79.16%)	4,713 (73.53%)	4,299 (68.38%)
Minority	2,091 (33.79%)	2,797 (42.42%)	2,978 (46.46%)	3,455 (54.95%)



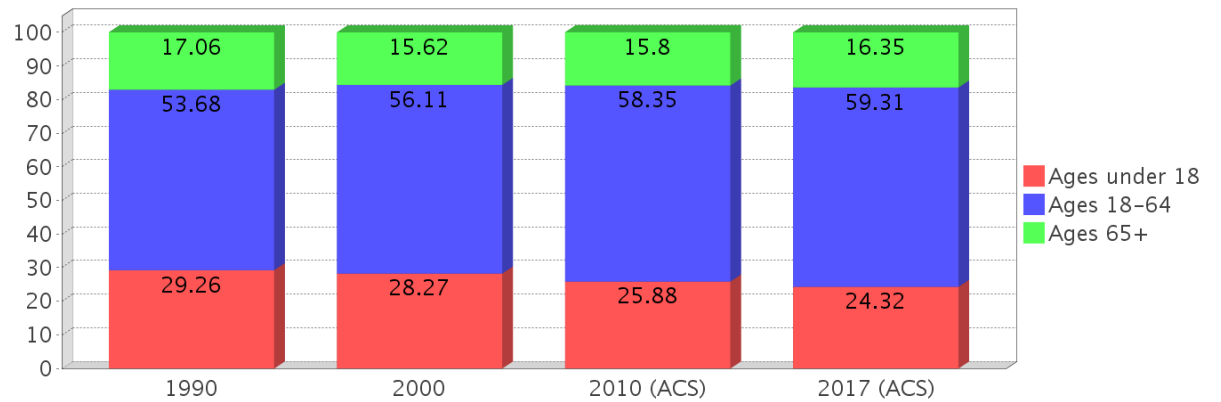
Minority Percentage Population



Age Trends

Description	1990	2000	2010 (ACS)	2017 (ACS)
Under Age 5	8.06%	7.05%	7.36%	6.66%
Ages 5-17	21.20%	21.22%	18.52%	17.66%
Ages 18-21	5.74%	5.64%	6.30%	6.24%
Ages 22-29	11.10%	10.87%	11.14%	13.07%
Ages 30-39	13.52%	12.47%	11.09%	12.31%
Ages 40-49	10.91%	13.42%	12.61%	11.74%
Ages 50-64	12.41%	13.71%	17.21%	15.95%
Age 65 and Over	17.06%	15.62%	15.80%	16.35%
-Ages 65-74	8.29%	6.51%	7.05%	8.61%
-Ages 75-84	6.01%	5.87%	5.20%	5.31%
-Age 85 and Over	2.75%	3.25%	3.57%	2.43%
Median Age	NA	35	40	40

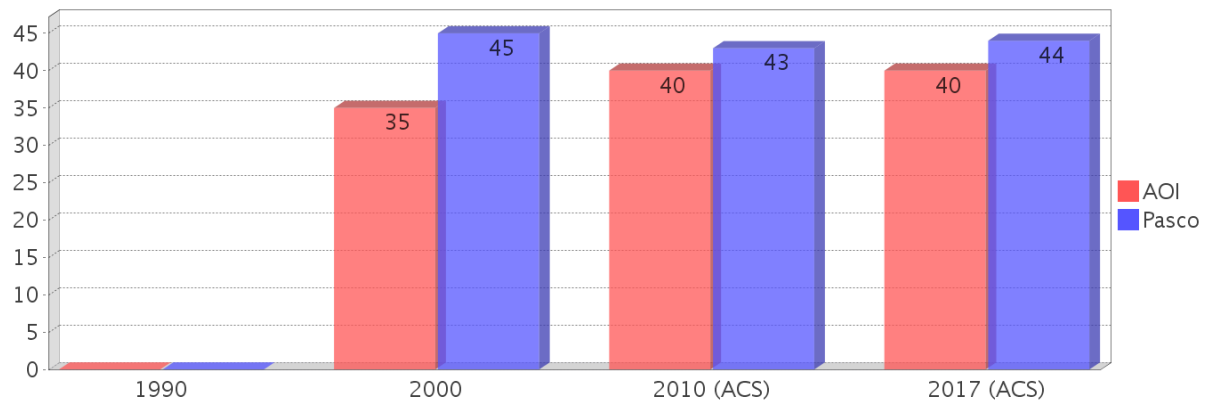
Percentage Population by Age Group



Income Trends

Description	1990	2000	2010 (ACS)	2017 (ACS)
Median Household Income	\$20,875	\$28,578	\$34,800	\$45,243
Median Family Income	\$23,750	\$32,052	\$51,190	\$56,014
Population below Poverty Level	26.03%	16.29%	32.68%	26.13%
Households below Poverty Level	24.19%	16.50%	21.82%	25.53%
Households with Public Assistance Income	12.99%	5.84%	3.00%	5.39%

Median Age Comparison

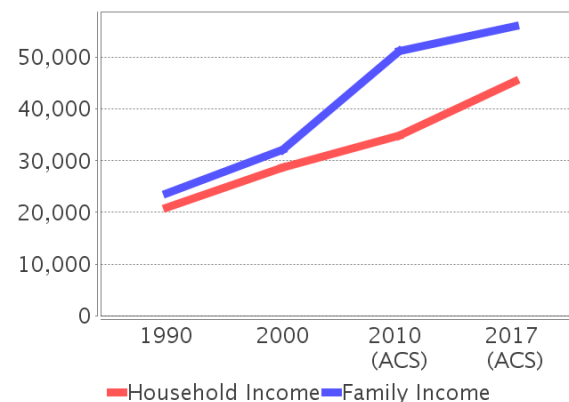


Disability Trends

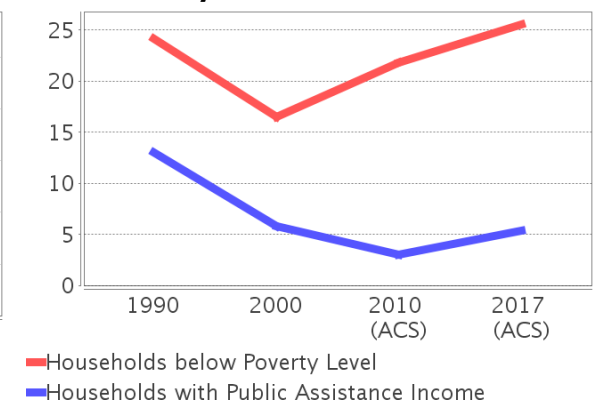
See the Data Sources section below for an explanation about the differences in disability data among the various years.

Description	1990	2000	2010 (ACS)	2017 (ACS)
Population 16 To 64 Years with a disability	502 (11.82%)	1155 (19.46%)	(NA)	(NA)
Population 20 To 64 Years with a disability	(NA)	(NA)	(NA)	583 (16.58%)

Income Trends



Poverty and Public Assistance



Educational Attainment Trends

Age 25 and Over

Description	1990	2000	2010 (ACS)	2017 (ACS)
Less than 9th Grade	779 (20.92%)	574 (14.12%)	456 (12.31%)	379 (9.14%)
9th to 12th Grade, No Diploma	724 (19.44%)	715 (17.58%)	731 (19.74%)	519 (12.51%)
High School Graduate or Higher	2,221 (59.64%)	2,777 (68.30%)	2,516 (67.94%)	3,250 (78.35%)
Bachelor's Degree or Higher	385 (10.34%)	631 (15.52%)	490 (13.23%)	585 (14.10%)

Language Trends

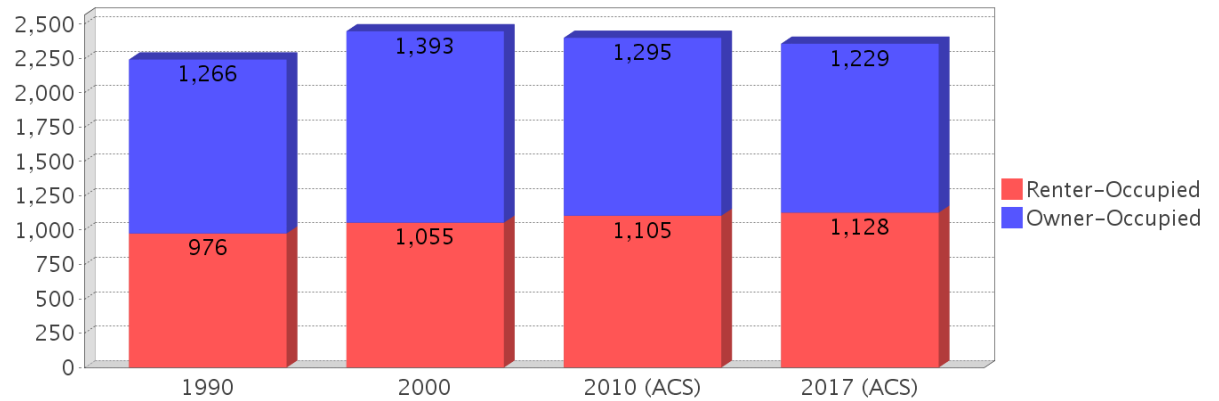
Age 5 and Over

Description	1990	2000	2010 (ACS)	2017 (ACS)
Speaks English Well	46 (0.83%)	171 (2.79%)	219 (3.94%)	209 (3.56%)
Speaks English Not Well	NA	250 (4.08%)	193 (3.47%)	131 (2.23%)
Speaks English Not at All	NA	207 (3.38%)	224 (4.03%)	135 (2.30%)
Speaks English Not Well or Not at All	187 (3.36%)	457 (7.46%)	417 (7.49%)	266 (4.53%)

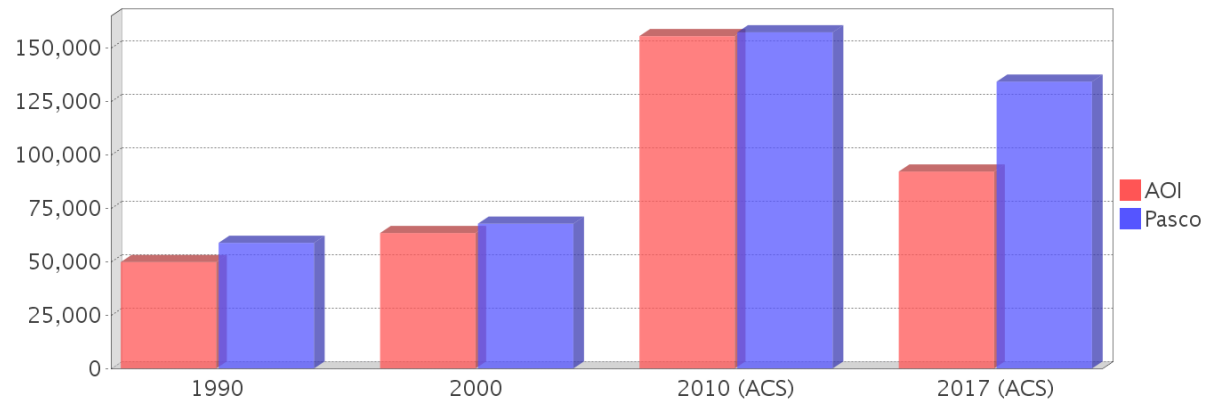
Housing Trends

Description	1990	2000	2010 (ACS)	2017 (ACS)
Total	2,534	2,727	2,819	2,884
Units per Acre	0.78	0.79	1.08	1.11
Single-Family Units	1,548	1,753	1,422	1,809
Multi-Family Units	527	754	676	866
Mobile Home Units	144	216	186	208
Owner-Occupied Units	1,266	1,393	1,295	1,229
Renter-Occupied Units	976	1,055	1,105	1,128
Vacant Units	292	278	418	526
Median Housing Value	\$49,800	\$63,400	\$155,600	\$92,200
Occupied Housing Units w/No Vehicle	363 (16.19%)	509 (20.78%)	277 (11.54%)	249 (10.56%)

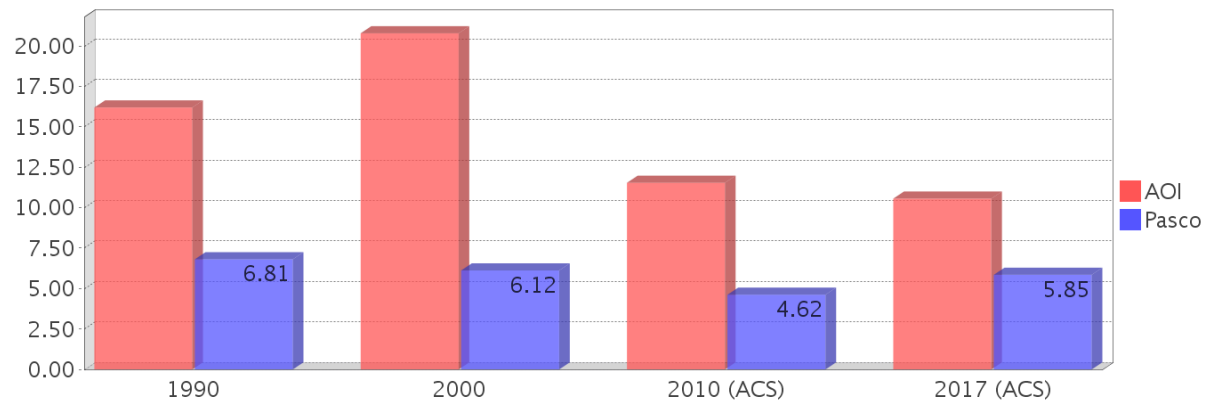
Housing Tenure



Median Housing Value Comparison



Occupied Units With No Vehicles Available



Community Facilities

The community facilities information below is useful in a variety of ways for environmental evaluations. These community resources should be evaluated for potential sociocultural effects, such as accessibility and relocation potential. The facility types may indicate the types of population groups present in the project study area. Facility staff and leaders can be sources of community information such as who uses the facility and how it is used. Additionally, community facilities are potential public meeting venues.

Assisted Housing (Points)

Facility Name	Address	Zip Code
COUNTRYSIDE VILLAS II	37305 COUNTRY LANE	335233079
DADE OAKS APARTMENTS	37460 ACORN LOOP	33523
DADE CITY QUADRAPLEX	37020 COLEMAN AVE	33525
COUNTRYSIDE VILLAS	37305 COUNTRY LN	33523
OAKCREST APTS. I	14940 WILLOWBROOK DR	335237572
OAKCREST II	14940 WILLOWBROOK DR.	33525
DADE CITY APARTMENTS	13314 WILLINGHAM LOOP	33525

Community Centers (Points)

Facility Name	Address	Zip Code
FRATERNAL ORDER OF EAGLES AERIE 4399	15924 US HWY 301	33523
DADE CITY GARDEN CLUB INC	13630 5TH ST	33525
LIONS CLUB - DADE CITY-HERITAGE PARK	37135 COLEMAN AVE	33525
CHAMBER OF COMMERCE - GREATER DADE CITY	14112 8TH ST	33525
WOMANS CLUB - DADE CITY	37922 PALM AVE	33526
MASONIC LODGE - DADE CITY	13642 21ST ST	33525
AMERICAN LEGION POST 15	37745 CHURCH AVE	33525
MID FLORIDA COMMUNITY SERVICES	13853 15TH ST	33525
ROTARY CLUB - DADE CITY SUNRISE	37940 LIVE OAK AVE	33523

Cultural Centers (Points)

Facility Name	Address	Zip Code
PASCO-HERNANDO COMMUNITY COLLEGE - CHARLES E CONGER LIBRARY	36727 BLANTON RD	33523
HUGH EMBRY BRANCH LIBRARY	14215 4TH ST	33525

Fire Stations (Points)

Facility Name	Address	Zip Code
PASCO COUNTY FIRE DEPARTMENT AND RESCUE STATION 24	14317 4TH ST	33523

Florida Parks and Recreational Facilities (Points)

Facility Name	Address	Zip Code
AGNES LAMB FOUR SEASONS PARK	37825 MERIDIAN AVE	33525
POLLY TOUCHTON PARK	13620 7TH ST	33526
NAOMI JONES PYACANTHA PARK	38122 MLK BLVD	33525
WATSON PARK	NORTH AVE & 7TH ST	33526
PRICE PARK	14233 11TH ST	33523
NAOMI JONES PYACANTHA PARK	38122 MLK BLVD	33525
MICKENS FIELD	38303 IRWIN AVE	33526
LESTER PARK	7TH ST & COLEMAN AVE	33525

Government Building

Facility Name	Address	Zip Code
PASCO COUNTY PROPERTY APPRAISER	14236 6TH ST	33526
PASCO COUNTY CIRCUIT AND COUNTY COURTS - PASCO COUNTY COURTHOUSE	38053 LIVE OAK AVE	33523
U S POST OFFICE - DADE CITY	37926 CHURCH AVE	33525
PASCO COUNTY HEALTH DEPARTMENT	13941 15TH ST	33525

Facility Name	Address	Zip Code
PASCO COUNTY TAX COLLECTOR	14236 6TH ST	33526
PASCO COUNTY CIRCUIT AND COUNTY COURTS - EAST PASCO GOVERNMENT CENTER	14236 SIXTH ST	33523
PASCO COUNTY SUPERVISOR OF ELECTIONS	14236 6TH ST	33523
CITY OF DADE CITY HALL	38020 MERIDIAN AVE	33525

Healthcare Facilities (Geocoded)

Facility Name	Address	Zip Code
SCANNON, MICHAEL A MD	13732 17TH STREET	33525
MCBATH MEDICAL CENTER	13933 17TH STREET, SUITE 101	33525
FAMILY MEDICAL CENTER-DC	13438 FORT KING ROAD	33525
FLORIDA DERMATOLOGY - SKIN CANCER SPECIALISTS PL	13732 17TH STREET	33525
MF HERITAGE LLC D/B/A HERITAGE PARK	37135 COLEMAN AVENUE	33525
PASCO COUNTY HEALTH DEPARTMENT-DC	13941 15TH STREET	33525
HARBOR-DCS CENTER	14527 7TH STREET	33523
WOMEN'S HEALTH OF PASCO	36739 STATE ROAD 52, SUITE 101	33525
CHIANG BEN L MD PA	13020 FORT KING ROAD, SUITE 102	33525
GUERRERO, NESTON M MD	37740 MERIDIAN AVENUE	33525
PREMIER COMMUNITY HEALTHCARE GROUP, INC.	37944 PASCO AVENUE	33525
PREMIER COMMUNITY HEALTHCARE GROUP, INC.	14027 5TH STREET	33525
PHCC - EAST CAMPUS	36727 BLANTON ROAD	33523
BAYFRONT HEALTH MEDICAL GROUP	13933 17TH STREET, SUITE 200	33525
COMPREHENSIVE PAIN MANAGEMENT PARTNERS	14028 5TH STREET	33525
TAKE CARE HEALTH SYSTEMS STORE 10197	12807 US 301 HIGHWAY	33525
INVASIVE PAIN MANAGEMENT CLINIC	36739 STATE 52 ROAD 102	33525
MERIDIAN ACUPUNCTURE CENTER	13020 FORT KING ROAD	33525
ROYAL OAK NURSING CENTER	37300 ROYAL OAK LANE	33525
EDWINOLA THE	14235 EDWINOLA WAY	33523
FLORIDA MEDICAL CLINIC-13417 DC	13417 US 301 HIGHWAY	33525

Hospitals (Points)

Facility Name	Address	Zip Code
BAYFRONT HEALTH DADE CITY - FORMERLY PASCO REGIONAL MEDICAL CENTER	13100 FORT KING RD	33525

Law Enforcement Facilities (Points)

Facility Name	Address	Zip Code
PASCO COUNTY SHERIFF'S OFFICE - DISTRICT 2	36409 SR 52	33525
DADE CITY POLICE DEPARTMENT	38030 PASCO AVE	33525

Public and Private Schools (Points)

Facility Name	Address	Zip Code
PASCO HIGH SCHOOL	36850 SR 52	33525
PASCO MIDDLE SCHOOL	13925 14TH ST	33525
RODNEY B. COX ELEMENTARY SCHOOL	37615 MARTIN LUTHER KING BLVD.	33523
MOORE-MICKENS EDUCATION CENTER	38301 DR. MARTIN LUTHER KING BLVD	33525
PASCO-HERNANDO STATE COLLEGE - EAST CAMPUS	36727 BLANTON ROAD	33523
PASCO ELEMENTARY SCHOOL	37350 FLORIDA AVE	33525

Religious Centers (Points)

Facility Name	Address	Zip Code
FREE METHODIST CHURCH	13945 20TH STREET	33525
ST MARY'S EPISCOPAL CHURCH	37623 MAGNOLIA AVENUE	33523
ST JOHN BAPTIST CHURCH	14549 8TH STREET	33523
FIRST PRESBYTERIAN CHURCH	37412 CHURCH AVENUE	33525
CHURCH OF CHRIST	14303 12TH STREET	33523
CHURCH OF GOD IN CHRIST	14626 7TH STREET	33523

Facility Name	Address	Zip Code
PRIMERA IGLESIA HISPANA DISCIPULOS DE CRISTO	38250 RIVER ROAD	33525
IGLESIA CRISTIANA MORADA DE PAZ	37135 MERIDIAN AVENUE	33525
FIRST COMMUNITY CHURCH	37420 BEAUCHAMP AVENUE	33523
ST RITA CATHOLIC CHURCH	14404 14TH STREET	33523
MOUNT ZION AFRICAN METHODIST EPISCOPAL CHURCH	14440 7TH STREET	33523
FIRST BAPTIST CHURCH	37511 CHURCH AVE	33525
CALVARY BAPTIST CHURCH	14312 17TH STREET	33523
ST PAUL BAPTIST CHURCH	14518 7TH STREET	33523
CALVARY ASSEMBLY OF GOD	13544 US HIGHWAY 98 BYPASS	33525
CHURCH OF GOD	14520 21ST STREET	33523
BETHEL PRIMITIVE CHURCH OF GOD	37315 CHURCH AVE	33525
FIRST METHODIST CHURCH	37628 CHURCH AVENUE	33525
MT ZION AME CHURCH PARSONAGE	37137 GOLDENROD CT	33523
THE ADAMS CHURCH OF GOD IN CHRIST	38306 TUSKEEGEE AVE	33525
NEW JERUSALEM CHURCH OF GOD	38442 TUSKEEGEE AVENUE	33525
DELIVERANCE TEMPLE OF TRUTH	14515 5TH STREET	33523

Social Services (Geocoded)

Facility Name	Address	Zip Code
DADE CITY UNIT 16AA	15000 CITRUS COUNTRY DRIVE	33523
CAREERSOURCE PASCO HERNANDO	15000 CITRUS COUNTRY DRIVE	33523
PASCO COUNTY_BOTH_HA CODE: FL104	36739 SR 52	33525
PASCO CHD DADE CITY	13941 15TH ST	33525
BAY AREA LEGAL SERVICES, INC. - PASCO/DADE CITY	37718 MERIDIAN AVENUE	33525

US Census Places

Facility Name
Pasadena Hills
Dade City
Dade City North

Veteran Organizations and Facilities (Points)

Facility Name	Address	Zip Code
AMERICAN LEGION POST 15	37745 CHURCH AVE	33525
PASCO COUNTY VETERANS SERVICE OFFICE	13853 15TH STREET	33525

Block Groups

The following Census Block Groups were used to calculate demographics for this report.

1990 Census Block Groups

121010327002, 121010325003, 121010326005, 121010327003, 121010325001, 121010324005, 121010325004, 121010323001, 121010326006, 121010326004, 121010324006, 121010325006, 121010326002, 121010322001, 121010325002, 121010326001, 121010326003, 121010328001, 121010327001

2000 Census Block Groups

121010327003, 121010325003, 121010322001, 121010326005, 121010326004, 121010325002, 121010324005, 121010325004, 121010323001, 121010325001, 121010328001, 121010327001, 121010326002, 121010326003, 121010327002, 121010324006, 121010325006, 121010326001

2010 Census Block Groups

121010328011, 121010326011, 121010325004, 121010326022, 121010324023, 121010326021, 121010325003, 121010325001, 121010327001, 121010326012, 121010323001, 121010327003, 121010327002, 121010322001, 121010325005

2017 Census Block Groups

121010325005, 121010325001, 121010326022, 121010327001, 121010325004, 121010328011, 121010323001, 121010322001, 121010326012, 121010326021, 121010327003, 121010326011, 121010325003, 121010327002, 121010324023

Data Sources

Area

The geographic area of the community based on a user-specified community boundary or area of interest (AOI) boundary.

Jurisdiction

Jurisdiction(s) includes local government boundaries that intersect the community or AOI boundary.

Demographic Data

Demographic data reported under the headings General Population Trends, Race and Ethnicity Trends, Age Trends, Income Trends, Educational Attainment Trends, Language Trends, and Housing Trends is from the U.S. Decennial Census (1990, 2000) and the American Community Survey (ACS) 5-year estimates from 2006-2010 and 2013-2017. The data was gathered at the block group level for user-specified community boundaries and AOIs, and at the county level for counties. Depending on the dataset, the data represents 100% counts (Census Summary File 1) or sample-based information (Census Summary File 3 or ACS).

About the Census Data:

User-specified community boundaries and AOIs do not always correspond precisely to block group boundaries. In these instances, adjustment of the geographic area and data for affected block groups is required to estimate the actual population. To improve the accuracy of such estimates in the SDR report, the census block group data was adjusted to exclude all census blocks with a population of two or fewer. These areas were eliminated from the corresponding years' block groups. Next, the portion of the block group that lies outside of the community or AOI boundary was removed. The demographics within each block group were then recalculated, assuming an equal area distribution of the population.

Note that there may be areas where there is no population.

Use caution when comparing the 100% count data (Decennial Census) to the sample-based data (ACS). In any given year, about one in 40 or 2.5% of U.S. households will receive the ACS questionnaire. Over any five-year period, about one in eight households will receive the questionnaire, as compared to about one in six that received the long form questionnaire for the Decennial Census 2000. (Source: <http://mcdc.missouri.edu/pub/data/acs/Readme.shtml>) The U.S. Census Bureau provides help with this process:

<https://www.census.gov/programs-surveys/acs/guidance/comparing-acs-data/2017.html>

Use caution when interpreting changes in Race and Ethnicity over time. Starting with the 2000 Decennial Census, respondents were given a new option of selecting one or more race categories. Also in 2000, the placement of the question about Hispanic origin changed, helping to increase responsiveness to the Hispanic-origin question. Because of these and other changes, the 1990 data on race and ethnicity are not directly comparable with data from later censuses. (Source: <http://www.census.gov/prod/2001pubs/c2kbr01-1.pdf>; <http://www.census.gov/pred/www/rpts/Race%20and%20Ethnicity%20FINAL%20report.pdf>)

The "Minority" calculations are derived from Census and ACS data using both the race and ethnicity responses. On this report, "Minority" refers to individuals who list a race other than White and/or list their ethnicity as Hispanic/Latino. In other words, people who are multi-racial, any single race other than White, or Hispanic/Latino of any race are considered minorities.

Disability data is not included in the 2010 Decennial Census, or the 2006-2010 ACS. This data is available in the 2013-2017 ACS.

Because of changes made to the Census and ACS questions between 1990 and 2017, disability variables should not be compared from year to year. For example: 1) With the 1990 data the disabilities are listed as a "work disability" while this distinction is not made with 2000 or 2017 ACS data; 2) The 2017 ACS data includes the institutionalized population (e.g. persons in prisons and group homes), while this population is not included in 1990 or 2000; 3) the age groupings changed over the years.

Please take the following two concerns into account when viewing this data: 1) With the 1990 data the disabilities are listed as a "work disability" while this distinction is not made with 2000 or 2017 ACS data; 2) The 2017 ACS data includes the institutionalized population (e.g. persons in prisons and group homes), while this population is not included in 1990 or 2000.

The category Bachelor's Degree or Higher under the heading Educational Attainment Trends is a subset of the category High School Graduate or Higher.

Income of households. This includes the income of the householder and all other individuals 15 years old and over in the household, whether they are related to the householder or not. Because many households consist of only one person, average household income is usually less than average family income.

Income of families. In compiling statistics on family income, the incomes of all members 15 years old and over related to the householder are summed and treated as a single amount.

Age Trends median age for 1990 is not available.

Land Use Data

The Land Use information Indicates acreages and percentages for the generalized land use types used to group parcel-specific, existing land use assigned by the county property appraiser office according to the Florida Department of Revenue land use codes.

Community Facilities Data

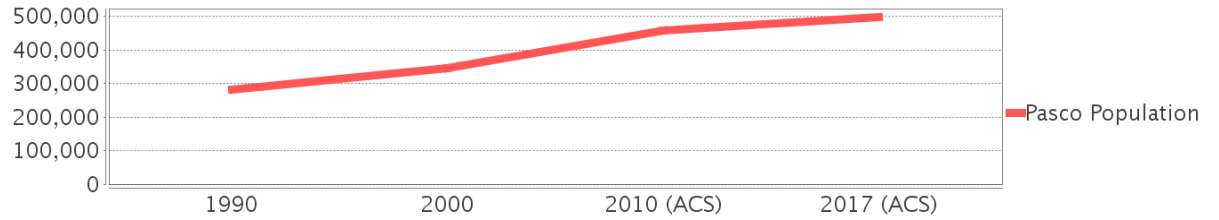
- Assisted Rental Housing Units - Identifies multifamily rental developments that receive funding assistance under federal, state, and local government programs to offer affordable housing as reported by the Shimberg Center for Housing Studies, University of Florida.
- Mobile Home Parks - Identifies approved or acknowledged mobile home parks reported by the Florida Department of Business and Professional Regulation and Florida Department of Health.
- Migrant Camps - Identifies migrant labor camp facilities inspected by the Florida Department of Health.
- Group Care Facilities - Identifies group care facilities inspected by the Florida Department of Health.
- Community Center and Fraternal Association Facilities - Identifies facilities reported by multiple sources.
- Law Enforcement Correctional Facilities - Identifies facilities reported by multiple sources.
- Cultural Centers - Identifies cultural centers including organizations, buildings, or complexes that promote culture and arts (e.g., aquariums and zoological facilities; arboreta and botanical gardens; dinner theaters; drive-ins; historical places and services; libraries; motion picture theaters; museums and art galleries; performing arts centers; performing arts theaters; planetariums; studios and art galleries; and theater producers stage facilities) reported by multiple sources.
- Fire Department and Rescue Station Facilities - Identifies facilities reported by multiple sources.
- Government Buildings - Identifies local, state, and federal government buildings reported by multiple sources.
- Health Care Facilities - Identifies health care facilities including abortion clinics, dialysis clinics, medical doctors, nursing homes, osteopaths, state laboratories/clinics, and surgicenters/walk-in clinics reported by the Florida Department of Health.
- Hospital Facilities - Identifies hospital facilities reported by multiple sources.
- Law Enforcement Facilities - Identifies law enforcement facilities reported by multiple sources.
- Parks and Recreational Facilities - Identifies parks and recreational facilities reported by multiple sources.
- Religious Center Facilities - Identifies religious centers including churches, temples, synagogues, mosques, chapels, centers, and other types of religious facilities reported by multiple sources.
- Private and Public Schools - Identifies private and public schools reported by multiple sources.
- Social Service Centers - Identifies social service centers reported by multiple sources.
- Veteran Organizations and Facilities

Pasco County Demographic Profile

General Population Trends - Pasco

Description	1990	2000	2010 (ACS)	2017 (ACS)
Total Population	281,131	344,765	456,514	498,136
Total Households	121,674	147,566	184,813	195,818
Average Persons per Acre	0.575	0.704	0.933	1.017
Average Persons per Household	2.311	2.298	2.00	2.51
Average Persons per Family	2.722	2.831	3.037	3.137
Males	133,220	165,332	221,933	242,448
Females	147,911	179,433	234,581	255,688

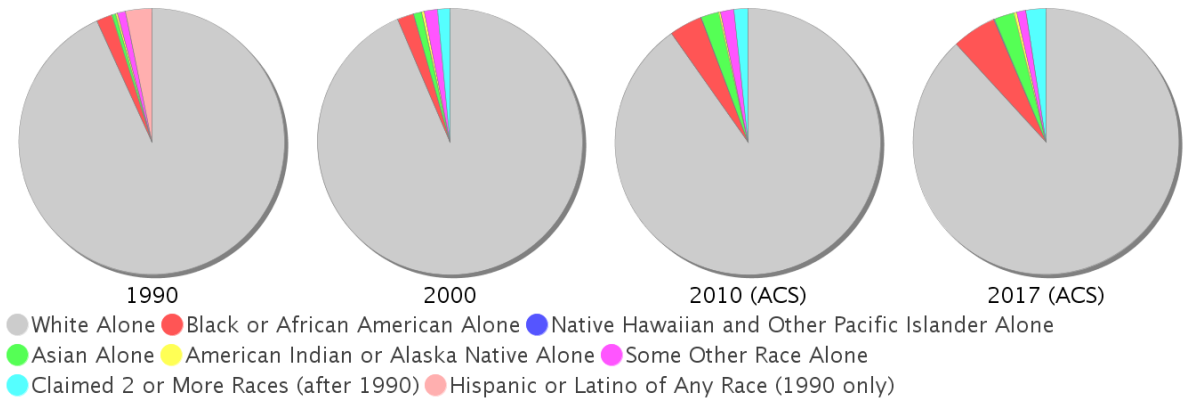
Pasco County Population



Race and Ethnicity Trends - Pasco

Description	1990	2000	2010 (ACS)	2017 (ACS)
White Alone	270,658 (96.27%)	322,607 (93.57%)	411,709 (90.19%)	439,087 (88.15%)
Black or African American Alone	5,457 (1.94%)	6,770 (1.96%)	18,549 (4.06%)	26,932 (5.41%)
Native Hawaiian and Other Pacific Islander Alone	(NA)	100 (0.03%)	158 (0.03%)	338 (0.07%)
Asian Alone	1,429 (0.51%)	3,489 (1.01%)	9,749 (2.14%)	12,264 (2.46%)
American Indian or Alaska Native Alone	784 (0.28%)	1,051 (0.30%)	1,187 (0.26%)	1,789 (0.36%)
Some Other Race Alone	2,752 (0.98%)	5,468 (1.59%)	7,406 (1.62%)	5,690 (1.14%)
Claimed 2 or More Races	(NA)	5,280 (1.53%)	7,756 (1.70%)	12,036 (2.42%)
Hispanic or Latino of Any Race	9,309 (3.31%)	19,555 (5.67%)	49,360 (10.81%)	69,864 (14.03%)
Not Hispanic or Latino	271,822 (96.69%)	325,210 (94.33%)	407,154 (89.19%)	428,272 (85.97%)
Minority	92,458 (32.89%)	34,956 (10.14%)	92,458 (20.25%)	117,435 (23.57%)

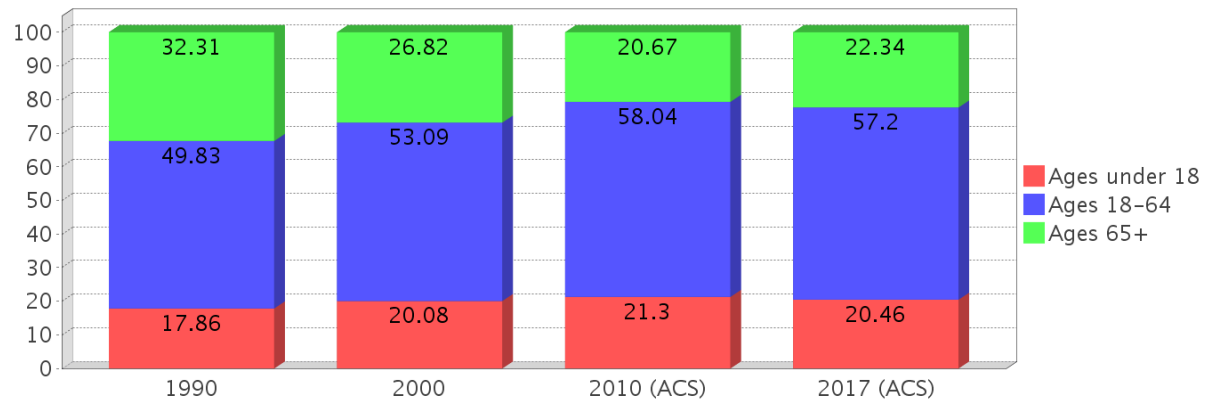
Pasco County Race



Age Trends - Pasco

Description	1990	2000	2010 (ACS)	2017 (ACS)
Under Age 5	5.16%	5.19%	5.62%	5.19%
Ages 5-17	12.70%	14.90%	15.67%	15.27%
Ages 18-21	3.87%	3.58%	4.27%	4.16%
Ages 22-29	8.55%	6.86%	7.81%	8.27%
Ages 30-39	11.69%	12.85%	11.83%	11.35%
Ages 40-49	9.86%	12.92%	14.65%	13.10%
Ages 50-64	15.86%	16.88%	19.47%	20.31%
Age 65 and Over	32.31%	26.82%	20.67%	22.34%
-Ages 65-74	18.95%	13.02%	10.64%	12.39%
-Ages 75-84	11.02%	10.72%	7.36%	7.12%
-Age 85 and Over	2.34%	3.09%	2.67%	2.83%
Median Age	NA	45	43	44

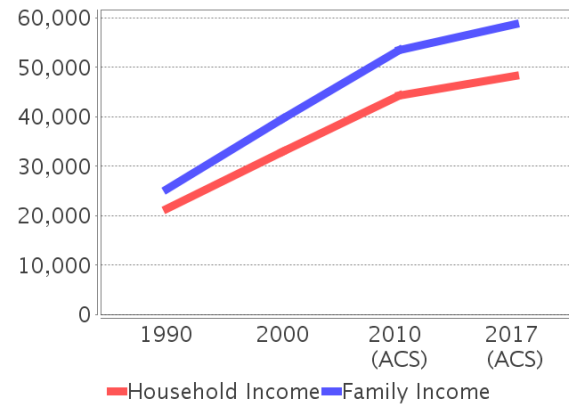
Percentage Population by Age Group - Pasco



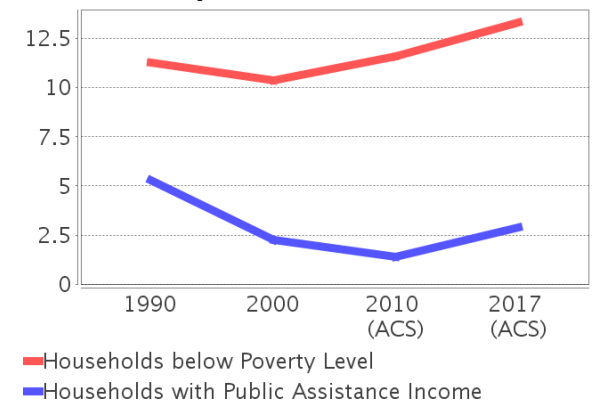
Income Trends - Pasco

Description	1990	2000	2010 (ACS)	2017 (ACS)
Median Household Income	\$21,480	\$32,969	\$44,228	\$48,289
Median Family Income	\$25,435	\$39,568	\$53,457	\$58,751
Population below Poverty Level	11.59%	10.67%	12.28%	13.56%
Households below Poverty Level	11.26%	10.37%	11.57%	13.30%
Households with Public Assistance Income	5.29%	2.24%	1.39%	2.89%

Income Trends



Poverty and Public Assistance



Disability Trends - Pasco

See the Data Sources section below for an explanation about the differences in disability data among the various years.

Description	1990	2000	2010 (ACS)	2017 (ACS)
Population 16 To 64 Years with a disability	18,025 (7.75%)	48,652 (15.06%)	NA (NA)	NA (NA)
Population 20 To 64 Years with a disability	NA (NA)	NA (NA)	NA (NA)	36,244 (13.35%)

Educational Attainment Trends - Pasco

Age 25 and Over

Description	1990	2000	2010 (ACS)	2017 (ACS)
Less than 9th Grade	22,484 (10.58%)	15,195 (5.95%)	12,990 (3.96%)	12,301 (3.41%)
9th to 12th Grade, No Diploma	47,974 (22.56%)	42,102 (16.48%)	32,648 (9.96%)	28,459 (7.89%)
High School Graduate or Higher	142,154 (66.86%)	198,175 (77.57%)	282,048 (86.07%)	319,804 (88.70%)
Bachelor's Degree or Higher	19,248 (9.05%)	33,548 (13.13%)	65,463 (19.98%)	81,795 (22.69%)

Language Trends - Pasco

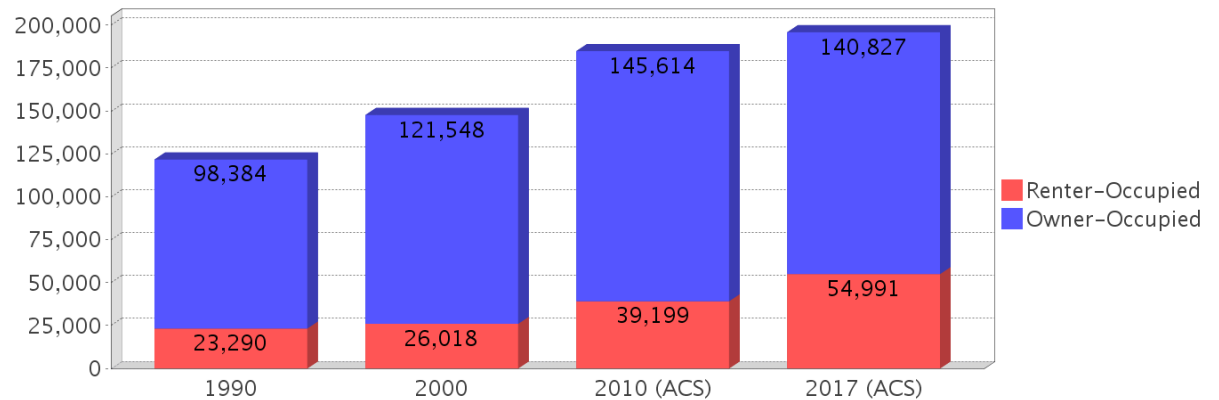
Age 5 and Over

Description	1990	2000	2010 (ACS)	2017 (ACS)
Speaks English Well	4,548 (1.71%)	6,654 (2.04%)	10,398 (2.41%)	9,735 (2.06%)
Speaks English Not Well	NA (NA)	3,903 (1.19%)	6,737 (1.56%)	6,658 (1.41%)
Speaks English Not at All	NA (NA)	1,090 (0.33%)	2,403 (0.56%)	2,485 (0.53%)
Speaks English Not Well or Not at All	2,384 (0.89%)	4,993 (1.53%)	9,140 (2.12%)	9,143 (1.94%)

Housing Trends - Pasco

Description	1990	2000	2010 (ACS)	2017 (ACS)
Total	148,965	173,717	224,432	237,481
Units per Acre	0.304	0.355	0.458	0.485
Single-Family Units	78,855	109,251	152,353	159,462
Multi-Family Units	13,177	18,561	24,383	31,574
Mobile Home Units	28,895	43,700	46,784	45,736
Owner-Occupied Units	98,384	121,548	145,614	140,827
Renter-Occupied Units	23,290	26,018	39,199	54,991
Vacant Units	27,291	26,151	39,619	41,663
Median Housing Value	\$58,800	\$67,800	\$157,400	\$134,300
Occupied Housing Units w/No Vehicle	8,291 (6.81%)	9,037 (6.12%)	8,545 (4.62%)	11,463 (5.85%)

Housing Tenure - Pasco



County Data Sources

Demographic data reported is from the U.S. Decennial Census (1990, 2000) and the American Community Survey (ACS) 5-year estimates from 2006-2010 and 2013-2017. The data was gathered at the county level. Depending on the dataset, the data represents 100% counts (Census Summary File 1) or sample-based information (Census Summary File 3 or ACS).

About the Census Data:

Use caution when comparing the 100% count data (Decennial Census) to the sample-based data (ACS). In any given year, about one in 40 or 2.5% of U.S. households will receive the ACS questionnaire. Over any five-year period, about one in eight households will receive the questionnaire, as compared to about one in six that received the long form questionnaire for the Decennial Census 2000. (Source: <http://mcdc.missouri.edu/pub/data/acs/Readme.shtml>) The U.S. Census Bureau provides help with this process:

<https://www.census.gov/programs-surveys/acs/guidance/comparing-acs-data/2017.html>

Use caution when interpreting changes in Race and Ethnicity over time. Starting with the 2000 Decennial Census, respondents were given a new option of selecting one or more race categories. Also in 2000, the placement of the question about Hispanic origin changed, helping to increase responsiveness to the Hispanic-origin question. Because of these and other changes, the 1990 data on race and ethnicity are not directly comparable with data from later censuses. (Source: <http://www.census.gov/prod/2001pubs/c2kbr01-1.pdf>; <http://www.census.gov/pred/www/rpts/Race%20and%20Ethnicity%20FINAL%20report.pdf>)

The "Minority" calculations are derived from Census and ACS data using both the race and ethnicity responses. On this report, "Minority" refers to individuals who list a race other than White and/or list their ethnicity as Hispanic/Latino. In other words, people who are multi-racial, any single race other than White, or Hispanic/Latino of any race are considered minorities.

Disability data is not included in the 2010 Decennial Census, or the 2006-2010 ACS. This data is available in the 2013-2017 ACS.

Because of changes made to the Census and ACS questions between 1990 and 2017, disability variables should not be compared from year to year. For example: 1) With the 1990 data the disabilities are listed as a "work disability" while this distinction is not made with 2000 or 2017 ACS data; 2) The 2017 ACS data includes the institutionalized population (e.g. persons in prisons and group homes), while this population is not included in 1990 or 2000; 3) the age groupings changed over the years.

Please take the following two concerns into account when viewing this data: 1) With the 1990 data the disabilities are listed as a "work disability" while this distinction is not made with 2000 or 2017 ACS data; 2) The 2017 ACS data includes the institutionalized population (e.g. persons in prisons and group homes), while this population is not included in 1990 or 2000.

source:

<https://www.census.gov/people/disability/methodology/acs.html>

<https://www.census.gov/population/www/cen2000/90vs00/index.html>

The category Bachelor's Degree or Higher under the heading Educational Attainment Trends is a subset of the category High School Graduate or Higher.

Metadata

- Community and Fraternal Centers https://etdmpub.florida-et.org/metadata/gc_communitycenter.htm
- Correctional Facilities in Florida https://etdmpub.florida-et.org/metadata/gc_correctional.htm
- Cultural Centers in Florida https://etdmpub.florida-et.org/metadata/gc_culturecenter.htm
- Fire Department and Rescue Station Facilities in Florida https://etdmpub.florida-et.org/metadata/gc_firestat.htm
- Local, State, and Federal Government Buildings in Florida https://etdmpub.florida-et.org/metadata/gc_govbuild.htm
- Florida Health Care Facilities https://etdmpub.florida-et.org/metadata/gc_health.htm
- Hospital Facilities in Florida https://etdmpub.florida-et.org/metadata/gc_hospitals.htm
- Law Enforcement Facilities in Florida https://etdmpub.florida-et.org/metadata/gc_lawenforce.htm
- Florida Parks and Recreational Facilities https://etdmpub.florida-et.org/metadata/gc_parks.htm
- Religious Centers https://etdmpub.florida-et.org/metadata/gc_religion.htm
- Florida Public and Private Schools https://etdmpub.florida-et.org/metadata/gc_schools.htm
- Social Service Centers https://etdmpub.florida-et.org/metadata/gc_socialservice.htm
- Assisted Rental Housing Units in Florida https://etdmpub.florida-et.org/metadata/gc_assisted_housing.htm
- Group Care Facilities <https://etdmpub.florida-et.org/metadata/groupcare.htm>
- Mobile Home Parks in Florida https://etdmpub.florida-et.org/metadata/gc_mobilehomes.htm
- Migrant Camps in Florida <https://etdmpub.florida-et.org/metadata/migrant.htm>
- Veteran Organizations and Facilities https://etdmpub.florida-et.org/metadata/gc_veterans.htm
- Generalized Land Use - Florida DOT District 7 https://etdmpub.florida-et.org/metadata/d7_lu_gen.htm
- Census Block Groups in Florida https://etdmpub.florida-et.org/metadata/e2_cenacs_cci.htm
- 1990 Census Block Groups in Florida https://etdmpub.florida-et.org/metadata/e2_cenblkgrp_1990_cci.htm
- 2000 Census Block Groups in Florida https://etdmpub.florida-et.org/metadata/e2_cenblkgrp_2000_cci.htm
- 2010 Census Block Groups in Florida https://etdmpub.florida-et.org/metadata/e2_cenblkgrp_2010_cci.htm