

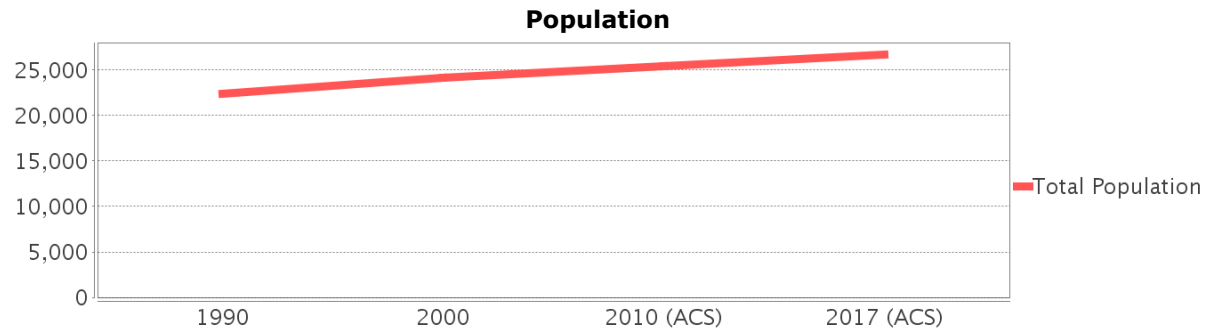
# Sociocultural Data Report

## Area of Interest TEMPLE TERRACE - Alternative #1

**Area:** 7.589 square miles  
**Jurisdiction(s):** **Cities:** Temple Terrace, Tampa  
**Counties:** Hillsborough

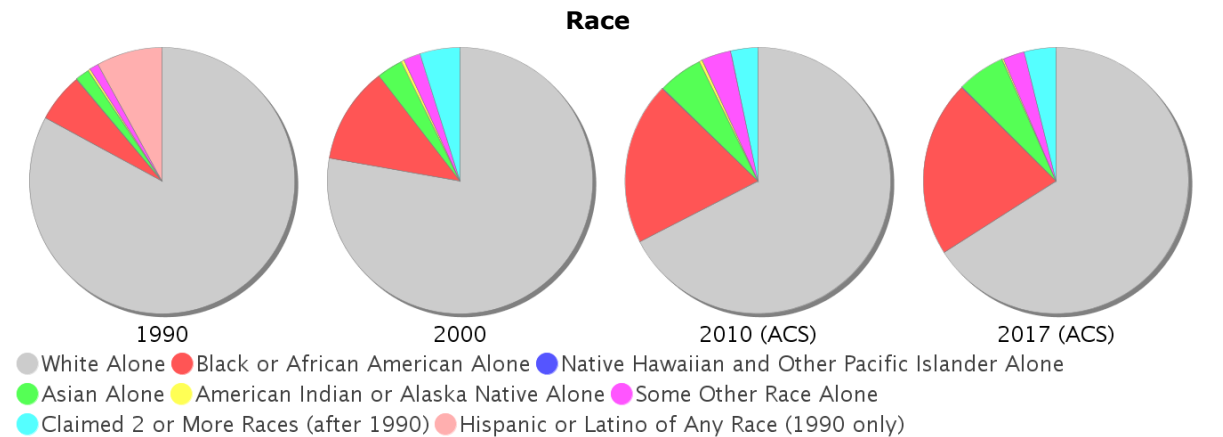
### General Population Trends

Description	1990	2000	2010 (ACS)	2017 (ACS)
Total Population	22,395	24,185	25,410	26,684
Total Households	8,812	9,820	10,427	10,052
Average Persons per Acre	7.56	6.92	7.30	7.61
Average Persons per Household	2.52	2.46	2.41	2.53
Average Persons per Family	2.99	3.07	3.00	3.33
Males	10,738	11,555	12,263	13,081
Females	11,657	12,630	13,147	13,603

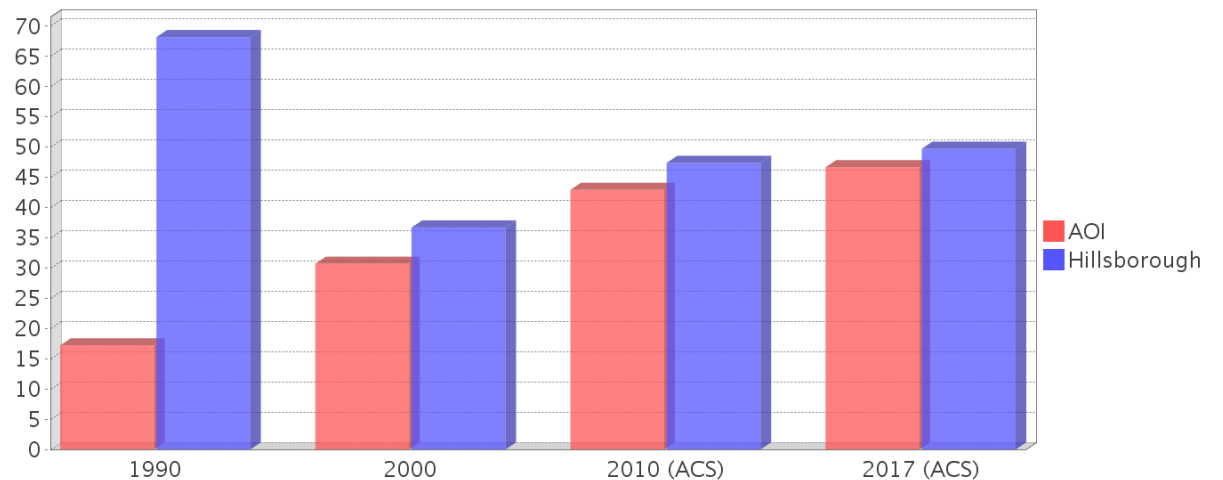


### Race and Ethnicity Trends

Description	1990	2000	2010 (ACS)	2017 (ACS)
White Alone	20,180 (90.11%)	18,795 (77.71%)	17,134 (67.43%)	17,596 (65.94%)
Black or African American Alone	1,453 (6.49%)	2,854 (11.80%)	5,023 (19.77%)	5,720 (21.44%)
Native Hawaiian and Other Pacific Islander Alone	8 (0.04%)	0 (0.00%)	18 (0.07%)	25 (0.09%)
Asian Alone	423 (1.89%)	764 (3.16%)	1,380 (5.43%)	1,564 (5.86%)
American Indian or Alaska Native Alone	60 (0.27%)	91 (0.38%)	108 (0.43%)	42 (0.16%)
Some Other Race Alone	271 (1.21%)	498 (2.06%)	914 (3.60%)	705 (2.64%)
Claimed 2 or More Races	NA (NA)	1,183 (4.89%)	833 (3.28%)	1,032 (3.87%)
Hispanic or Latino of Any Race	1,956 (8.73%)	2,941 (12.16%)	3,965 (15.60%)	4,671 (17.50%)
Not Hispanic or Latino	20,439 (91.27%)	21,244 (87.84%)	21,445 (84.40%)	22,013 (82.50%)
Minority	3,854 (17.21%)	7,425 (30.70%)	10,906 (42.92%)	12,451 (46.66%)



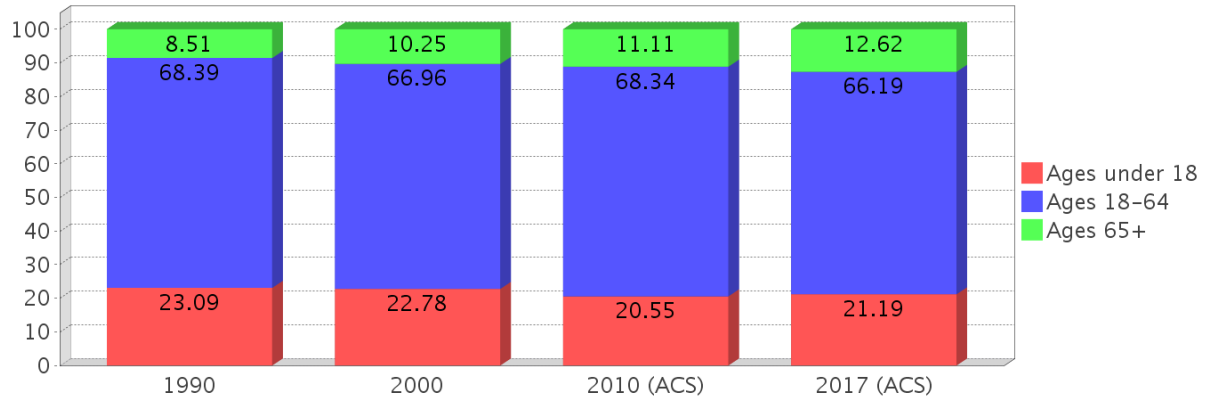
### Minority Percentage Population



### Age Trends

Description	1990	2000	2010 (ACS)	2017 (ACS)
Under Age 5	6.81%	5.92%	6.01%	5.85%
Ages 5-17	16.28%	16.86%	14.55%	15.34%
Ages 18-21	7.81%	8.69%	8.85%	7.99%
Ages 22-29	16.34%	14.02%	17.22%	16.83%
Ages 30-39	18.34%	15.36%	12.59%	12.87%
Ages 40-49	13.50%	14.17%	11.88%	10.33%
Ages 50-64	12.40%	14.72%	17.79%	18.16%
Age 65 and Over	8.51%	10.25%	11.11%	12.62%
-Ages 65-74	5.69%	5.93%	6.35%	7.76%
-Ages 75-84	2.21%	3.81%	3.57%	3.23%
-Age 85 and Over	0.60%	0.51%	1.19%	1.62%
Median Age	NA	33	34	34

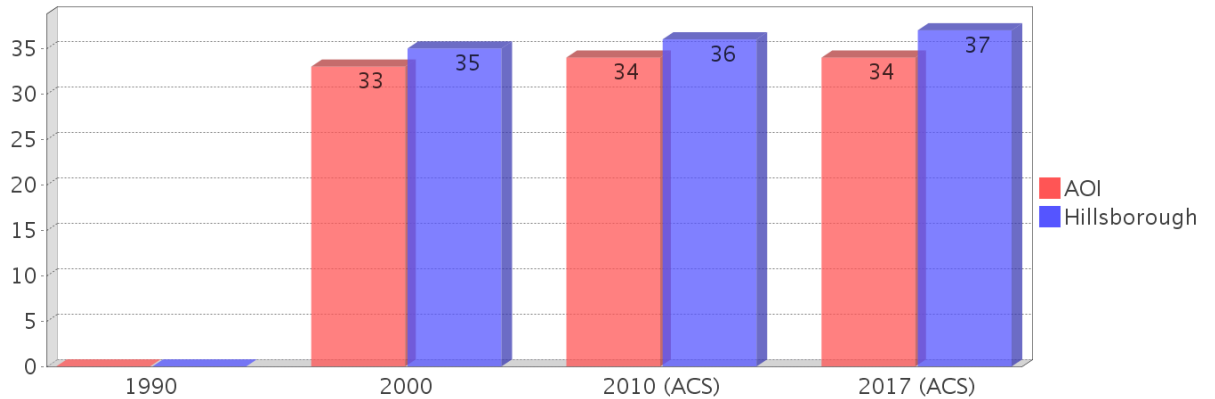
Percentage Population by Age Group



### Income Trends

Description	1990	2000	2010 (ACS)	2017 (ACS)
Median Household Income	\$30,786	\$38,115	\$43,015	\$43,652
Median Family Income	\$36,356	\$42,776	\$54,542	\$62,999
Population below Poverty Level	8.79%	9.79%	14.24%	16.76%
Households below Poverty Level	8.26%	10.11%	14.56%	14.73%
Households with Public Assistance Income	1.74%	1.45%	1.59%	2.09%

Median Age Comparison

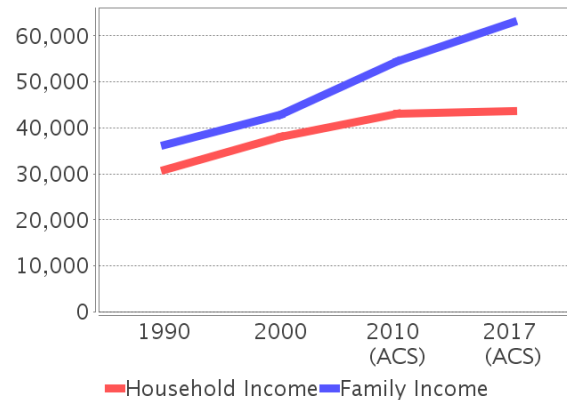


### Disability Trends

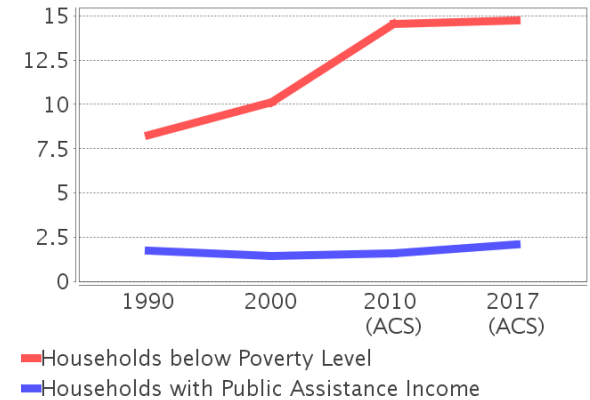
See the Data Sources section below for an explanation about the differences in disability data among the various years.

Description	1990	2000	2010 (ACS)	2017 (ACS)
Population 16 To 64 Years with a disability	856 (4.88%)	2506 (11.03%)	(NA)	(NA)
Population 20 To 64 Years with a disability	(NA)	(NA)	(NA)	1538 (9.20%)

Income Trends



Poverty and Public Assistance



## Educational Attainment Trends

Age 25 and Over

Description	1990	2000	2010 (ACS)	2017 (ACS)
Less than 9th Grade	401 (2.84%)	405 (2.65%)	394 (2.52%)	424 (2.49%)
9th to 12th Grade, No Diploma	962 (6.82%)	1,311 (8.58%)	868 (5.55%)	817 (4.79%)
High School Graduate or Higher	12,736 (90.33%)	13,564 (88.77%)	14,374 (91.92%)	15,817 (92.72%)
Bachelor's Degree or Higher	5,038 (35.73%)	5,905 (38.65%)	5,858 (37.46%)	7,515 (44.06%)

## Language Trends

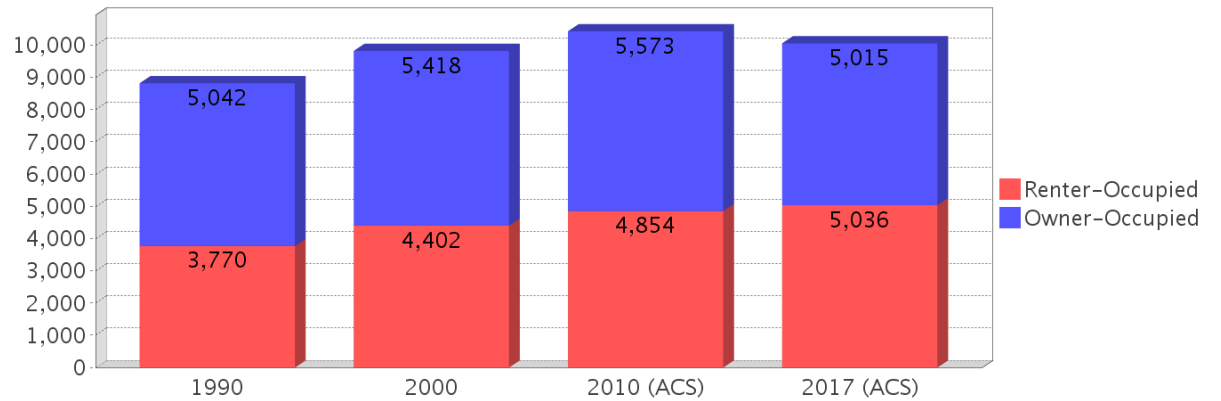
Age 5 and Over

Description	1990	2000	2010 (ACS)	2017 (ACS)
Speaks English Well	575 (2.78%)	659 (2.90%)	812 (3.38%)	1,102 (4.39%)
Speaks English Not Well	NA (NA)	515 (2.26%)	610 (2.54%)	747 (2.97%)
Speaks English Not at All	NA (NA)	168 (0.74%)	238 (0.99%)	285 (1.13%)
Speaks English Not Well or Not at All	289 (1.39%)	683 (3.00%)	848 (3.53%)	1,032 (4.11%)

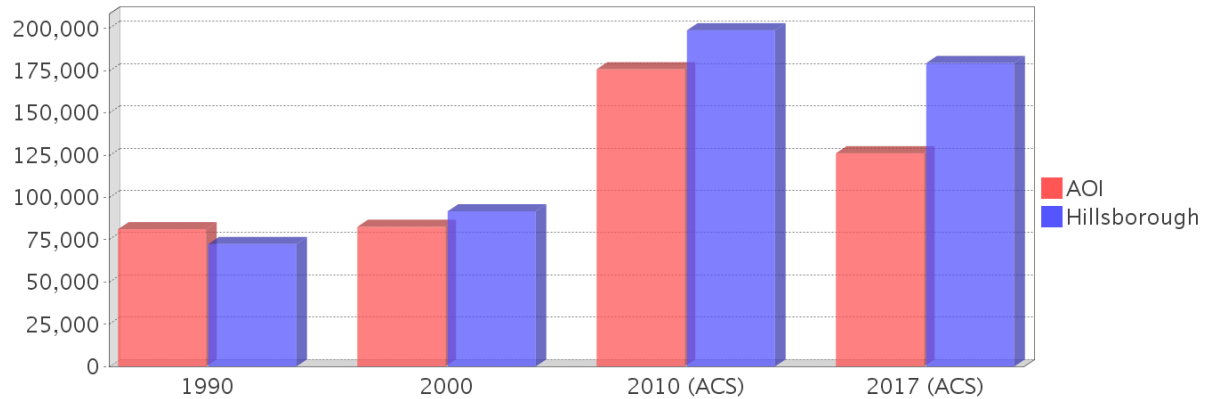
## Housing Trends

Description	1990	2000	2010 (ACS)	2017 (ACS)
Total	9,540	10,559	11,717	11,308
Units per Acre	2.18	2.46	2.77	2.67
Single-Family Units	5,059	5,551	5,974	6,118
Multi-Family Units	3,394	4,640	5,435	4,914
Mobile Home Units	308	363	344	276
Owner-Occupied Units	5,042	5,418	5,573	5,015
Renter-Occupied Units	3,770	4,402	4,854	5,036
Vacant Units	728	740	1,290	1,256
Median Housing Value	\$81,200	\$82,600	\$175,800	\$126,150
Occupied Housing Units w/No Vehicle	189 (2.14%)	496 (5.05%)	449 (4.31%)	489 (4.86%)

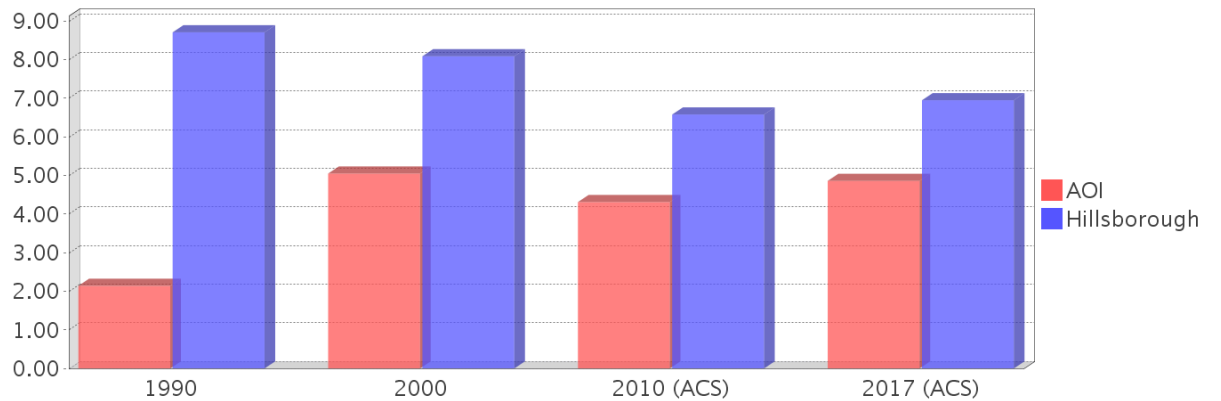
## Housing Tenure



## Median Housing Value Comparison

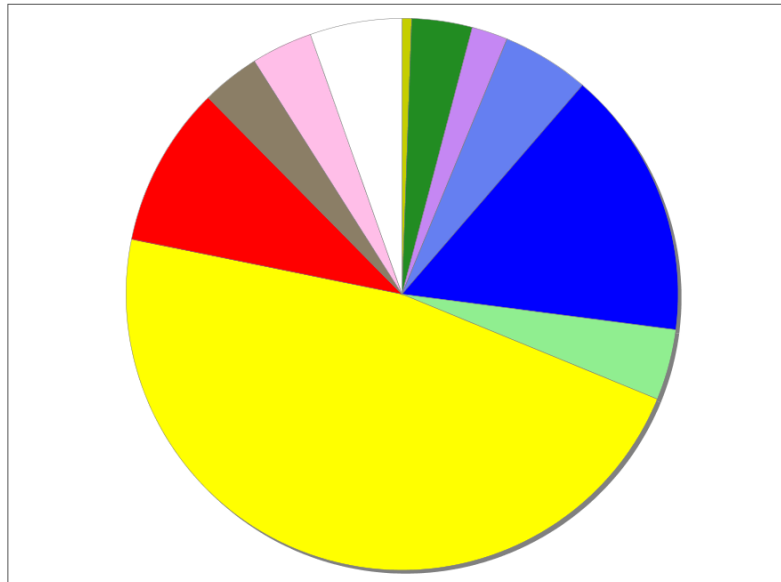


## Occupied Units With No Vehicles Available



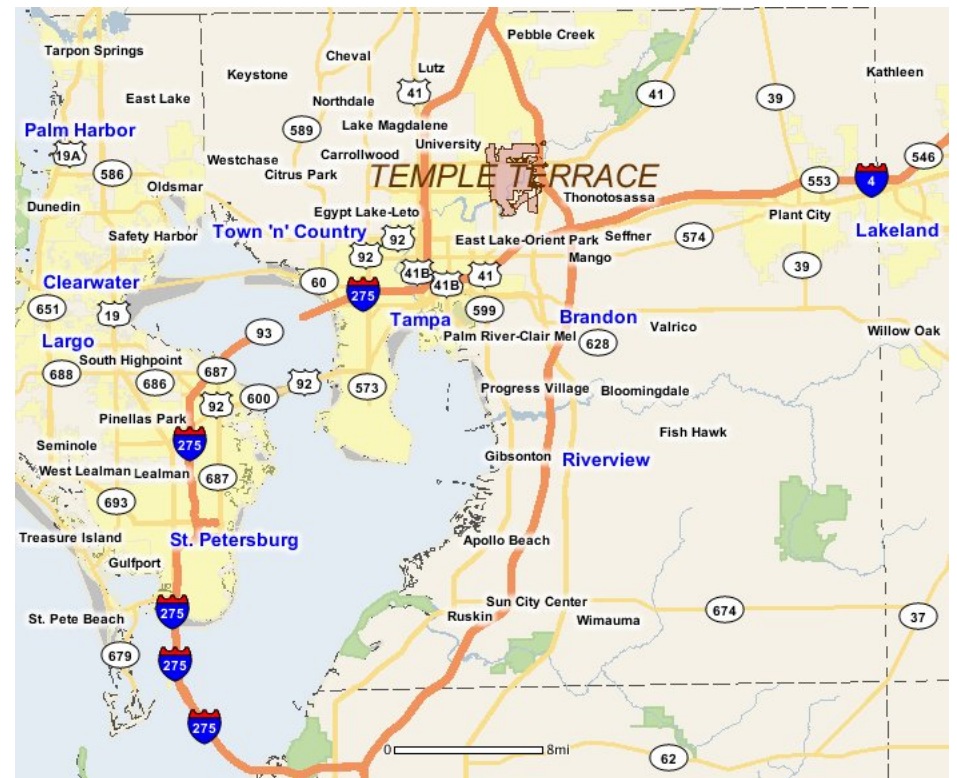
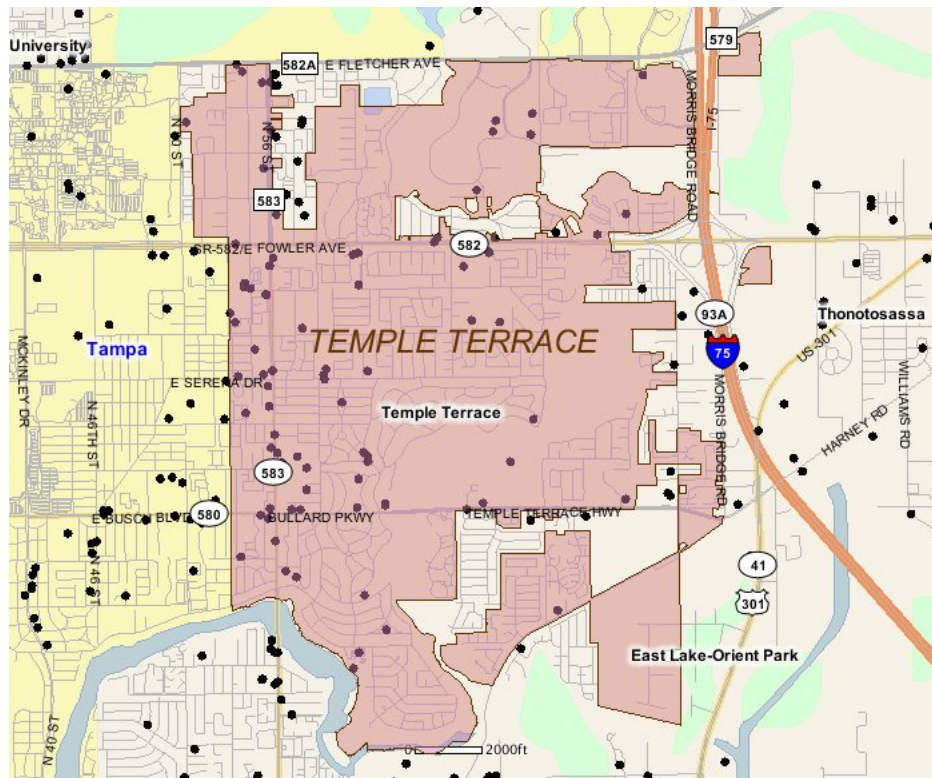
## Existing Land Use

Land Use Type	Acres	Percentage
Acreage Not Zoned For Agriculture	23	0.47%
Agricultural	148	3.05%
Centrally Assessed	0	0.00%
Industrial	89	1.83%
Institutional	213	4.39%
Mining	0	0.00%
Other	0	0.00%
Public/Semi-Public	657	13.53%
Recreation	173	3.56%
Residential	1,961	40.38%
Retail/Office	394	8.11%
Row	<0.5	<0.01%
Vacant Residential	142	2.92%
Vacant Nonresidential	149	3.07%
Water	0	0.00%
Parcels With No Values	226	4.65%



- Acreage Not Zoned For Agriculture
- Agricultural
- Centrally Assessed
- Industrial
- Institutional
- Mining
- Other
- Public/Semi-Public
- Recreation
- Residential
- Retail/Office
- Row
- Vacant Residential
- Vacant Nonresidential
- Water
- Parcels With No Values

## Location Maps



## Community Facilities

The community facilities information below is useful in a variety of ways for environmental evaluations. These community resources should be evaluated for potential sociocultural effects, such as accessibility and relocation potential. The facility types may indicate the types of population groups present in the project study area. Facility staff and leaders can be sources of community information such as who uses the facility and how it is used. Additionally, community facilities are potential public meeting venues.

### Assisted Housing (Points)

Facility Name	Address	Zip Code
NANTUCKET BAY	11800 SOPHIA DRIVE	33637

### Community Boundaries (User defined)

Facility Name
Terrace Park
University Area Community
East Lake Orient Park
Temple Crest (Tampa)
Terrace Park (Tampa)
Temple Crest

### Community Centers (Points)

Facility Name	Address	Zip Code
CHAMBER OF COMMERCE - GREATER TEMPLE TERRACE	9385 N 56TH ST	33617
KNIGHTS OF COLUMBUS 7644 - CORPUS CHRISTI	9714 N 56TH ST	33617
MASONIC LODGE - TEMPLE TERRACE 330 F & AM	11807 N 56TH ST	33617

### Cultural Centers (Points)

Facility Name	Address	Zip Code
TEMPLE TERRACE PUBLIC LIBRARY	202 BULLARD PKWY	33617
FLORIDA COLLEGE - CHATLOS LIBRARY	119 N GLEN ARVEN AVE	33617

### Fire Stations (Points)

Facility Name	Address	Zip Code
TEMPLE TERRACE FIRE DEPARTMENT AND RESCUE STATION 2	7772 E TELECOM PKWY	33637
TEMPLE TERRACE FIRE DEPARTMENT AND RESCUE STATION 1	124 BULLARD PKWY	33617

### Florida Parks and Recreational Facilities (Points)

Facility Name	Address	Zip Code
UNIVERSITY SQUARE PARK	5200 LAWNWOOD DR	33617
WOODMONT PARK	415 WOODMONT AVE	33617
RIVERHILLS PARK & BOAT RAMP	329 S RIVERHILLS DR	33617
BEN LOMOND PARK	905 BEN LOMOND DR	33617
TEMPLE TERRACE TENNIS CENTER	10901 RICHLYNE ST	33617
BILTMORE PARK	426 BILTMORE AVE	33617
LINWOOD PARK	11304 N 62ND ST	33617
FAMILY RECREATION COMPLEX	6610 WHITEWAY DR	33617
RIDGEDALE SPORTS COMPLEX	204 RIDGEDALE RD	33617
RIVERSIDE PARK	201 S RIVERHILLS DR	33617
UNIVERSITY SQUARE PLAYGROUND	11016 N 53RD ST	33617
ROTARY RIVERFRONT PARK/FOWLER AVENUE BOAT RAMP	E FOWLER AVE & MORRIS BRIDGE RD	33637
OVERLOOK PARK	8705 OVERLOOK DR	33617
BONNIE BRAE PARK	399 FOREST PARK AVE	33617
TEMPLE TERRACE GOLF & COUNTRY CLUB	200 INVERNESS AVE	33617
RIVERFRONT PRESERVE TRAILHEAD	9388 N 78TH ST	33637

## Government Building

Facility Name	Address	Zip Code
U S POST OFFICE - TEMPLE TERRACE	8761 N 56TH ST	33617
CITY OF TEMPLE TERRACE CITY HALL	11250 N 56TH ST	33617

## Healthcare Facilities (Geocoded)

Facility Name	Address	Zip Code
GALLOWAY CHIROPRACTIC AND SPORTS REHAB BDA GULF CO	6963 E FOWLER AVENUE	33617
FLORIDA ORTHOPAEDIC INSTITUTE SURGERY CENTER	13060 TELECOM PARKWAY	33637
ALL KIDS PEDIATRICS PA	5415 E BUSCH BOULEVARD	33617
ALLY HEALTHCARE LLC	5503 E BUSCH BOULEVARD	33617
FHPG TEMPLE TERRACE INTERNAL MEDICINE	9804 N 56TH STREET	33617
SANTIAGO, RAMON MD	13250 N 56TH STREET 101	33617
RETINA VITREOUS ASSOCIATION OF FLORIDA	12903 N 56TH STREET	33617
FLORIDA ORTHOPAEDIC INSTITUTE TELCOM	13020 TELECOM PARKWAY N	33637
ADVANCED DERMATOLOGY AND COSMETIC SURGERY	5224 E FOWLER AVENUE	33617
FLORIDA FAMILY PRIMARY CARE CENTERS OF TAMPA LLC	11531 N 56TH, UNIT 103	33617
DVA RENAL HEALTHCARE INC DBA TEMPLE TERRACE DIALYS	11306 53RD STREET	33617
SUPERIOR MEDICAL CLINIC	9780 N 56TH STREET, SUITE C	33617
REPRODUCTIVE MEDICINE GROUP THE	5245 E FLETCHER AVENUE 1	33617
ACOSTA, RUDOLPH JR MD PA	12408 N 56TH STREET 1	33617
ROSENTHAL, STANLEY A DO	11410 N 56TH STREET	33617
UNIVERSITY HEMATOLOGY AND ONCOLOGY	6171 E FOWLER AVENUE	33617
LAKESIDE OCCUPATIONAL MEDICAL TEMPLE TERRACE	10320 N 56TH STREET, SUITE 110	33617
TAKE CARE HEALTH SERVICES TEMPLE TERRACE	9202 N 56TH STREET	33617
BORRA, SUJATHA MD	13333 N 56TH STREET	33617
COMPREHENSIVE PHYSICIAN SERVICES	6957 E FOWLER AVENUE	33617

## Law Enforcement Facilities (Points)

Facility Name	Address	Zip Code
FDEP LAW ENFORCEMENT OFFICE OF EMERGENCY RESPONSE - TAMPA -SW OFFICE	13051 N TELECOM PKWY	33637
TEMPLE TERRACE POLICE DEPARTMENT	11250 N 56TH ST	33617

## Public and Private Schools (Points)

Facility Name	Address	Zip Code
RIVERHILLS ELEMENTARY MAGNET SCHOOL	405 S RIVERHILLS DR	33617
THE GODDARD SCHOOL FOR EARLY CHILDHOOD DEVELOPMENT	13401 TAMPA OAKS BLVD	33637
CHRIST OUR REDEEMER LUTHERAN SCHOOL	304 DRUID HILLS ROAD	33617
FOCUS ACADEMY	304 DRUID HILLS RD	33617
R'CLUB CHILD CARE, INC:EARLY LEARNING ACADEMIES	12420 TELECOM DRIVE	33637
MONTESSORI PREPARATORY	11302 NORTH 53RD STREET	33617
HARMON STEM SCHOOL	210 INVERNESS AVE	33617
GRECO MIDDLE SCHOOL	6925 E FOWLER AVENUE	33617
FLORIDA COLLEGE ACADEMY	7032 TEMPLE TERRACE HIGHWAY	33637
TEMPLE TERRACE ELEMENTARY SCHOOL	124 FLOTTO AVENUE	33617
LIBERTAS ACADEMY	6718 EAST FOWLER AVE	33617
WOODMONT CHARTER SCHOOL	10402 N 56TH ST	33617
CORPUS CHRISTI CATHOLIC SCHOOL	9715 N 56TH STREET	33617
FLORIDA COLLEGE	119 N GLEN ARVEN AVE	33617
LEWIS ELEMENTARY SCHOOL	6700 WHITEWAY DRIVE	33617

## Religious Centers (Points)

Facility Name	Address	Zip Code
FIREHOUSE CHURCH	8872 N 56TH STREET	33617
TEMPLE TERRACE COMMUNITY CHURCH	210 INVERNESS AVENUE	33617
PENTECOSTAL TABERNACLE-TAMPA	7002 E FOWLER AVENUE	33617
TRUTH OUTREACH INTERNATIONAL MINISTRIES	10711 NORTH 53RD STREET	33617
CORPUS CHRISTI CATHOLIC CHURCH	9715 N 56TH STREET	33617
TEMPLE TERRACE COMMUNITY CHURCH	212 INVERNESS AV	33617
RIVERDALE BAPTIST CHURCH	8302 TEMPLE TERRACE HIGHWAY	33637
FOWLER AVENUE BAPTIST CHURCH	6161 E FOWLER AVENUE	33617
CATHOLIC STUDENT CENTER	13005 NORTH 50TH STREET	33617
TEMPLE TERRACE FIRST BAPTIST CHURCH	10002 N 56TH ST	33617
CHRIST OUR REDEEMER LUTHERAN	304 DRUID HILLS ROAD	33617
ST CATHERINE'S EPISCOPAL CHURCH	502 DRUID HILLS ROAD	33617
JEHOVAH'S WITNESSES GREATER TAMPA - TEMPLE TERRACE	10911 NORTH 52ND STREET	33617
TEMPLE TERRACE PRESBYTERIAN	420 BULLARD PARKWAY	33617
FAITH ASSEMBLY OF GOD	8525 N 78TH STREET	33637

## US Census Places

### Facility Name

Temple Terrace

East Lake-Orient Park

Tampa

---

## Block Groups

The following Census Block Groups were used to calculate demographics for this report.

### 1990 Census Block Groups

120570009001, 120570106003, 120570009002, 120570106006, 120570001003, 120570106002, 120570107007, 120570108041, 120570001009, 120570107008, 120570104021, 120570106004, 120570108042, 120570108043, 120570108044, 120570106001, 120570104011, 120570104012, 120570001002, 120570107009, 120570107004, 120570107006, 120570107002, 120570102041, 120570106005, 120570001001, 120570107003, 120570107001, 120570102042, 120570107005, 120570102031, 120570102013

### 2000 Census Block Groups

120570106003, 120570106001, 120570104012, 120570107021, 120570108043, 120570107011, 120570108044, 120570102031, 120570107013, 120570001009, 120570001001, 120570107023, 120570009001, 120570009002, 120570104011, 120570107014, 120570106002, 120570107012, 120570107022, 120570102042, 120570104021, 120570106004, 120570102081, 120570001002, 120570108042, 120570001003, 120570108041, 120570102041

### 2010 Census Block Groups

120570001023, 120570107014, 120570104012, 120570104013, 120570108102, 120570009023, 120570009022, 120570108113, 120570108111, 120570108112, 120570106002, 120570107023, 120570107013, 120570104023, 120570107021, 120570108101, 120570102042, 120570102131, 120570001024, 120570106001, 120570107012, 120570104011, 120570107022, 120570106003, 120570104024, 120570001011, 120570001012, 120570108091, 120570108114, 120570107011, 120570102041, 120570102031

### 2017 Census Block Groups

120570001012, 120570107021, 120570107011, 120570104023, 120570001024, 120570108113, 120570107012, 120570108102, 120570102131, 120570001023, 120570106002, 120570108114, 120570102042, 120570009022, 120570107013, 120570108111, 120570102031, 120570001011, 120570108091, 120570107023, 120570106003, 120570104011, 120570102041, 120570107014, 120570106001, 120570104013, 120570108101, 120570009023, 120570104012, 120570107022, 120570108112, 120570104024

---

## Data Sources

### Area

The geographic area of the community based on a user-specified community boundary or area of interest (AOI) boundary.

### Jurisdiction

Jurisdiction(s) includes local government boundaries that intersect the community or AOI boundary.

### Demographic Data

Demographic data reported under the headings General Population Trends, Race and Ethnicity Trends, Age Trends, Income Trends, Educational Attainment Trends, Language Trends, and Housing Trends is from the U.S. Decennial Census (1990, 2000) and the American Community Survey (ACS) 5-year estimates from 2006-2010 and 2013-2017. The data was gathered at the block group level for user-specified community boundaries and AOIs, and at the county level for counties. Depending on the dataset, the data represents 100% counts (Census Summary File 1) or sample-based information (Census Summary File 3 or ACS).

## About the Census Data:

User-specified community boundaries and AOIs do not always correspond precisely to block group boundaries. In these instances, adjustment of the geographic area and data for affected block groups is required to estimate the actual population. To improve the accuracy of such estimates in the SDR report, the census block group data was adjusted to exclude all census blocks with a population of two or fewer. These areas were eliminated from the corresponding years' block groups. Next, the portion of the block group that lies outside of the community or AOI boundary was removed. The demographics within each block group were then recalculated, assuming an equal area distribution of the population. Note that there may be areas where there is no population.

Use caution when comparing the 100% count data (Decennial Census) to the sample-based data (ACS). In any given year, about one in 40 or 2.5% of U.S. households will receive the ACS questionnaire. Over any five-year period, about one in eight households will receive the questionnaire, as compared to about one in six that received the long form questionnaire for the Decennial Census 2000. (Source: <http://mcdc.missouri.edu/pub/data/acs/Readme.shtml>) The U.S. Census Bureau provides help with this process:

<https://www.census.gov/programs-surveys/acs/guidance/comparing-acs-data/2017.html>

Use caution when interpreting changes in Race and Ethnicity over time. Starting with the 2000 Decennial Census, respondents were given a new option of selecting one or more race categories. Also in 2000, the placement of the question about Hispanic origin changed, helping to increase responsiveness to the Hispanic-origin question. Because of these and other changes, the 1990 data on race and ethnicity are not directly comparable with data from later censuses. (Source: <http://www.census.gov/prod/2001pubs/c2kbr01-1.pdf>; <http://www.census.gov/pred/www/rpts/Race%20and%20Ethnicity%20FINAL%20report.pdf>)

The "Minority" calculations are derived from Census and ACS data using both the race and ethnicity responses. On this report, "Minority" refers to individuals who list a race other than White and/or list their ethnicity as Hispanic/Latino. In other words, people who are multi-racial, any single race other than White, or Hispanic/Latino of any race are considered minorities.

Disability data is not included in the 2010 Decennial Census, or the 2006-2010 ACS. This data is available in the 2013-2017 ACS.

Because of changes made to the Census and ACS questions between 1990 and 2017, disability variables should not be compared from year to year. For example: 1) With the 1990 data the disabilities are listed as a "work disability" while this distinction is not made with 2000 or 2017 ACS data; 2) The 2017 ACS data includes the institutionalized population (e.g. persons in prisons and group homes), while this population is not included in 1990 or 2000; 3) the age groupings changed over the years.

Please take the following two concerns into account when viewing this data: 1) With the 1990 data the disabilities are listed as a "work disability" while this distinction is not made with 2000 or 2017 ACS data; 2) The 2017 ACS data includes the institutionalized population (e.g. persons in prisons and group homes), while this population is not included in 1990 or 2000.

The category Bachelor's Degree or Higher under the heading Educational Attainment Trends is a subset of the category High School Graduate or Higher.

Income of households. This includes the income of the householder and all other individuals 15 years old and over in the household, whether they are related to the householder or not. Because many households consist of only one person, average household income is usually less than average family income.

Income of families. In compiling statistics on family income, the incomes of all members 15 years old and over related to the householder are summed and treated as a single amount.

Age Trends median age for 1990 is not available.

## Land Use Data

The Land Use information Indicates acreages and percentages for the generalized land use types used to group parcel-specific, existing land use assigned by the county property appraiser office according to the Florida Department of Revenue land use codes.

## Community Facilities Data

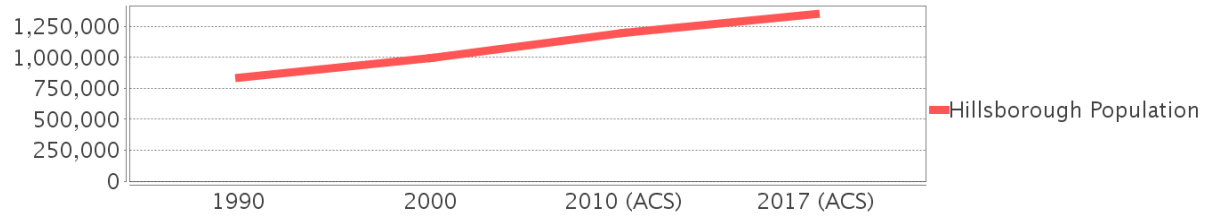
- Assisted Rental Housing Units - Identifies multifamily rental developments that receive funding assistance under federal, state, and local government programs to offer affordable housing as reported by the Shimberg Center for Housing Studies, University of Florida.
- Mobile Home Parks - Identifies approved or acknowledged mobile home parks reported by the Florida Department of Business and Professional Regulation and Florida Department of Health.
- Migrant Camps - Identifies migrant labor camp facilities inspected by the Florida Department of Health.
- Group Care Facilities - Identifies group care facilities inspected by the Florida Department of Health.
- Community Center and Fraternal Association Facilities - Identifies facilities reported by multiple sources.
- Law Enforcement Correctional Facilities - Identifies facilities reported by multiple sources.
- Cultural Centers - Identifies cultural centers including organizations, buildings, or complexes that promote culture and arts (e.g., aquariums and zoological facilities; arboreta and botanical gardens; dinner theaters; drive-ins; historical places and services; libraries; motion picture theaters; museums and art galleries; performing arts centers; performing arts theaters; planetariums; studios and art galleries; and theater producers stage facilities) reported by multiple sources.
- Fire Department and Rescue Station Facilities - Identifies facilities reported by multiple sources.
- Government Buildings - Identifies local, state, and federal government buildings reported by multiple sources.
- Health Care Facilities - Identifies health care facilities including abortion clinics, dialysis clinics, medical doctors, nursing homes, osteopaths, state laboratories/clinics, and surgicenters/walk-in clinics reported by the Florida Department of Health.
- Hospital Facilities - Identifies hospital facilities reported by multiple sources.
- Law Enforcement Facilities - Identifies law enforcement facilities reported by multiple sources.
- Parks and Recreational Facilities - Identifies parks and recreational facilities reported by multiple sources.
- Religious Center Facilities - Identifies religious centers including churches, temples, synagogues, mosques, chapels, centers, and other types of religious facilities reported by multiple sources.
- Private and Public Schools - Identifies private and public schools reported by multiple sources.
- Social Service Centers - Identifies social service centers reported by multiple sources.
- Veteran Organizations and Facilities

# Hillsborough County Demographic Profile

## General Population Trends - Hillsborough

Description	1990	2000	2010 (ACS)	2017 (ACS)
Total Population	834,054	998,948	1,200,236	1,351,087
Total Households	324,872	391,357	462,447	505,845
Average Persons per Acre	1.216	1.458	1.751	1.97
Average Persons per Household	2.567	2.508	3.00	2.63
Average Persons per Family	3.106	3.156	3.262	3.371
Males	406,217	488,596	585,512	658,639
Females	427,837	510,352	614,724	692,448

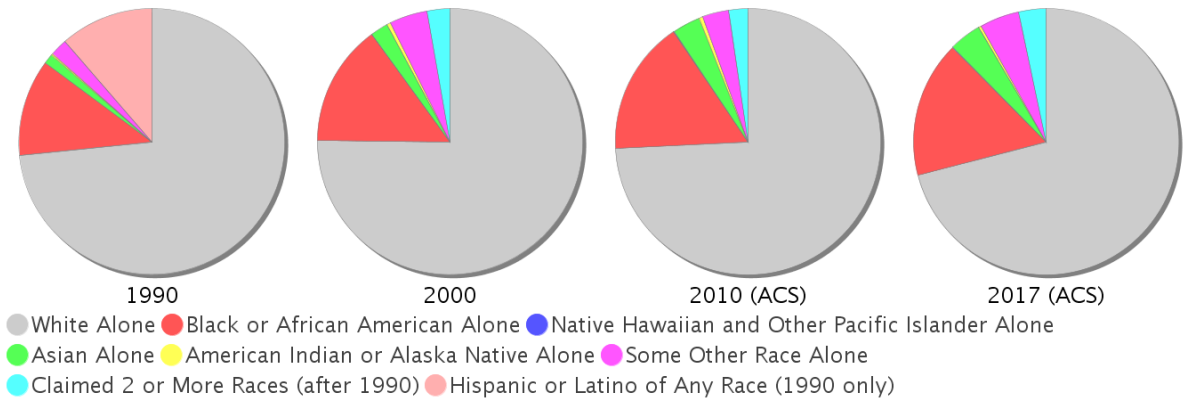
### Hillsborough County Population



## Race and Ethnicity Trends - Hillsborough

Description	1990	2000	2010 (ACS)	2017 (ACS)
White Alone	690,352 (82.77%)	750,497 (75.13%)	890,392 (74.18%)	958,208 (70.92%)
Black or African American Alone	110,283 (13.22%)	147,966 (14.81%)	196,352 (16.36%)	224,284 (16.60%)
Native Hawaiian and Other Pacific Islander Alone	(NA)	540 (0.05%)	773 (0.06%)	918 (0.07%)
Asian Alone	11,093 (1.33%)	21,571 (2.16%)	40,285 (3.36%)	53,446 (3.96%)
American Indian or Alaska Native Alone	2,454 (0.29%)	4,175 (0.42%)	5,523 (0.46%)	4,080 (0.30%)
Some Other Race Alone	19,586 (2.35%)	46,587 (4.66%)	39,276 (3.27%)	65,344 (4.84%)
Claimed 2 or More Races	(NA)	27,612 (2.76%)	27,635 (2.30%)	44,807 (3.32%)
Hispanic or Latino of Any Race	106,908 (12.82%)	179,637 (17.98%)	286,394 (23.86%)	370,827 (27.45%)
Not Hispanic or Latino	727,146 (87.18%)	819,311 (82.02%)	913,842 (76.14%)	980,260 (72.55%)
Minority	568,661 (68.18%)	366,644 (36.70%)	568,661 (47.38%)	671,746 (49.72%)

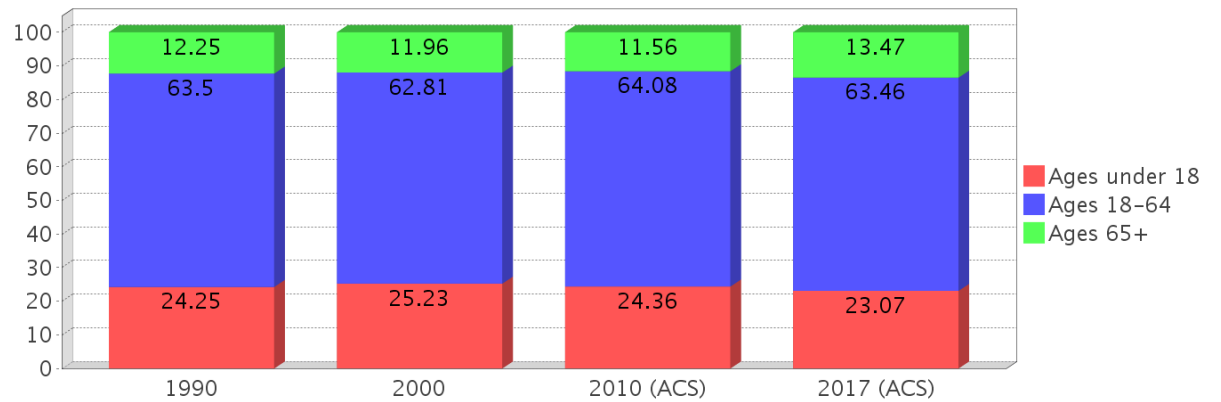
### Hillsborough County Race



### Age Trends - Hillsborough

Description	1990	2000	2010 (ACS)	2017 (ACS)
Under Age 5	7.30%	6.77%	6.70%	6.36%
Ages 5-17	16.95%	18.46%	17.66%	16.71%
Ages 18-21	5.96%	5.33%	5.91%	5.38%
Ages 22-29	14.20%	11.31%	11.83%	11.77%
Ages 30-39	17.39%	16.38%	13.93%	13.95%
Ages 40-49	12.95%	15.22%	15.18%	13.65%
Ages 50-64	13.00%	14.57%	17.23%	18.70%
Age 65 and Over	12.25%	11.96%	11.56%	13.47%
-Ages 65-74	7.41%	6.46%	6.21%	7.97%
-Ages 75-84	3.83%	4.20%	3.87%	3.88%
-Age 85 and Over	1.00%	1.29%	1.48%	1.62%
Median Age	NA	35	36	37

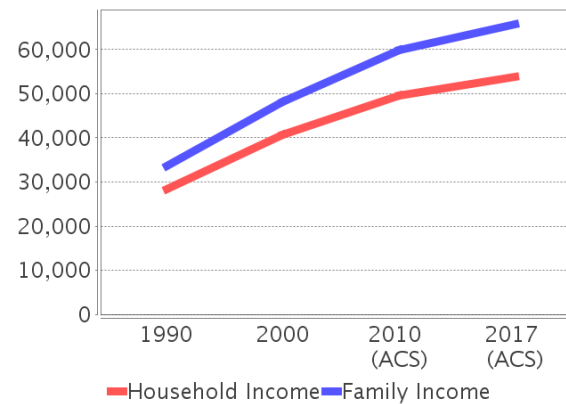
Percentage Population by Age Group - Hillsborough



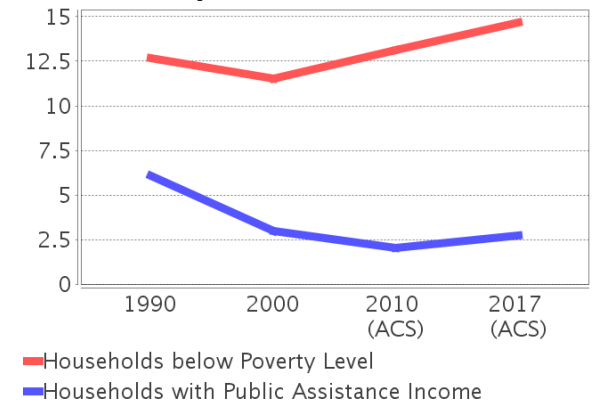
### Income Trends - Hillsborough

Description	1990	2000	2010 (ACS)	2017 (ACS)
Median Household Income	\$28,477	\$40,663	\$49,536	\$53,742
Median Family Income	\$33,645	\$48,223	\$59,886	\$65,730
Population below Poverty Level	13.29%	12.51%	14.17%	15.65%
Households below Poverty Level	12.66%	11.50%	13.11%	14.66%
Households with Public Assistance Income	6.07%	3.01%	2.06%	2.72%

Income Trends



Poverty and Public Assistance



### Disability Trends - Hillsborough

See the Data Sources section below for an explanation about the differences in disability data among the various years.

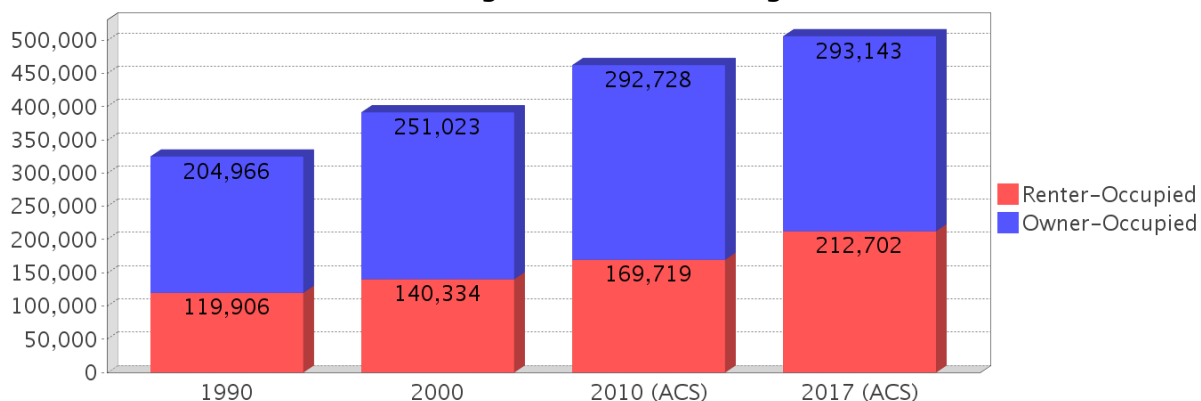
Description	1990	2000	2010 (ACS)	2017 (ACS)
Population 16 To 64 Years with a disability	48,345 (7.57%)	136,465 (14.85%)	NA (NA)	NA (NA)
Population 20 To 64 Years with a disability	NA (NA)	NA (NA)	NA (NA)	78,578 (9.62%)

## Educational Attainment Trends - Hillsborough

Age 25 and Over

Description	1990	2000	2010 (ACS)	2017 (ACS)
Less than 9th Grade	48,247 (8.85%)	41,209 (6.30%)	41,965 (5.35%)	44,103 (4.83%)
9th to 12th Grade, No Diploma	84,751 (15.55%)	84,574 (12.93%)	69,127 (8.82%)	64,010 (7.01%)
High School Graduate or Higher	412,022 (75.60%)	528,058 (80.76%)	672,988 (85.83%)	804,475 (88.15%)
Bachelor's Degree or Higher	110,070 (20.20%)	164,109 (25.10%)	226,113 (28.84%)	291,612 (31.95%)

## Housing Tenure - Hillsborough



## Language Trends - Hillsborough

Age 5 and Over

Description	1990	2000	2010 (ACS)	2017 (ACS)
Speaks English Well	23,611 (3.05%)	39,227 (4.21%)	54,355 (4.85%)	57,301 (4.53%)
Speaks English Not Well	NA	28,250 (3.03%)	39,803 (3.55%)	47,194 (3.73%)
Speaks English Not at All	NA	13,819 (1.48%)	19,950 (1.78%)	29,235 (2.31%)
Speaks English Not Well or Not at All	20,956 (2.71%)	42,069 (4.52%)	59,753 (5.34%)	76,429 (6.04%)

## Housing Trends - Hillsborough

Description	1990	2000	2010 (ACS)	2017 (ACS)
Total	367,740	425,962	526,016	563,638
Units per Acre	0.536	0.622	0.768	0.822
Single-Family Units	200,373	260,157	330,155	355,778
Multi-Family Units	87,418	122,837	153,087	166,885
Mobile Home Units	34,499	42,063	42,158	39,915
Owner-Occupied Units	204,966	251,023	292,728	293,143
Renter-Occupied Units	119,906	140,334	169,719	212,702
Vacant Units	42,868	34,605	63,569	57,793
Median Housing Value	\$72,400	\$91,800	\$198,900	\$179,500
Occupied Housing Units w/No Vehicle	28,289 (8.71%)	31,680 (8.09%)	30,440 (6.58%)	35,133 (6.95%)

---

## County Data Sources

Demographic data reported is from the U.S. Decennial Census (1990, 2000) and the American Community Survey (ACS) 5-year estimates from 2006-2010 and 2013-2017. The data was gathered at the county level. Depending on the dataset, the data represents 100% counts (Census Summary File 1) or sample-based information (Census Summary File 3 or ACS).

### About the Census Data:

Use caution when comparing the 100% count data (Decennial Census) to the sample-based data (ACS). In any given year, about one in 40 or 2.5% of U.S. households will receive the ACS questionnaire. Over any five-year period, about one in eight households will receive the questionnaire, as compared to about one in six that received the long form questionnaire for the Decennial Census 2000. (Source: <http://mcdc.missouri.edu/pub/data/acs/Readme.shtml>) The U.S. Census Bureau provides help with this process:

<https://www.census.gov/programs-surveys/acs/guidance/comparing-acs-data/2017.html>

Use caution when interpreting changes in Race and Ethnicity over time. Starting with the 2000 Decennial Census, respondents were given a new option of selecting one or more race categories. Also in 2000, the placement of the question about Hispanic origin changed, helping to increase responsiveness to the Hispanic-origin question. Because of these and other changes, the 1990 data on race and ethnicity are not directly comparable with data from later censuses. (Source: <http://www.census.gov/prod/2001pubs/c2kbr01-1.pdf>; <http://www.census.gov/pred/www/rpts/Race%20and%20Ethnicity%20FINAL%20report.pdf>)

The "Minority" calculations are derived from Census and ACS data using both the race and ethnicity responses. On this report, "Minority" refers to individuals who list a race other than White and/or list their ethnicity as Hispanic/Latino. In other words, people who are multi-racial, any single race other than White, or Hispanic/Latino of any race are considered minorities.

Disability data is not included in the 2010 Decennial Census, or the 2006-2010 ACS. This data is available in the 2013-2017 ACS.

Because of changes made to the Census and ACS questions between 1990 and 2017, disability variables should not be compared from year to year. For example: 1) With the 1990 data the disabilities are listed as a "work disability" while this distinction is not made with 2000 or 2017 ACS data; 2) The 2017 ACS data includes the institutionalized population (e.g. persons in prisons and group homes), while this population is not included in 1990 or 2000; 3) the age groupings changed over the years.

Please take the following two concerns into account when viewing this data: 1) With the 1990 data the disabilities are listed as a "work disability" while this distinction is not made with 2000 or 2017 ACS data; 2) The 2017 ACS data includes the institutionalized population (e.g. persons in prisons and group homes), while this population is not included in 1990 or 2000.

source:

<https://www.census.gov/people/disability/methodology/acs.html>

<https://www.census.gov/population/www/cen2000/90vs00/index.html>

The category Bachelor's Degree or Higher under the heading Educational Attainment Trends is a subset of the category High School Graduate or Higher.

---

## Metadata

- Community and Fraternal Centers [https://etdmpub.florida-et.org/metadata/gc\\_communitycenter.htm](https://etdmpub.florida-et.org/metadata/gc_communitycenter.htm)
- Correctional Facilities in Florida [https://etdmpub.florida-et.org/metadata/gc\\_correctional.htm](https://etdmpub.florida-et.org/metadata/gc_correctional.htm)
- Cultural Centers in Florida [https://etdmpub.florida-et.org/metadata/gc\\_culturecenter.htm](https://etdmpub.florida-et.org/metadata/gc_culturecenter.htm)
- Fire Department and Rescue Station Facilities in Florida [https://etdmpub.florida-et.org/metadata/gc\\_firestat.htm](https://etdmpub.florida-et.org/metadata/gc_firestat.htm)
- Local, State, and Federal Government Buildings in Florida [https://etdmpub.florida-et.org/metadata/gc\\_govbuild.htm](https://etdmpub.florida-et.org/metadata/gc_govbuild.htm)
- Florida Health Care Facilities [https://etdmpub.florida-et.org/metadata/gc\\_health.htm](https://etdmpub.florida-et.org/metadata/gc_health.htm)
- Hospital Facilities in Florida [https://etdmpub.florida-et.org/metadata/gc\\_hospitals.htm](https://etdmpub.florida-et.org/metadata/gc_hospitals.htm)
- Law Enforcement Facilities in Florida [https://etdmpub.florida-et.org/metadata/gc\\_lawenforce.htm](https://etdmpub.florida-et.org/metadata/gc_lawenforce.htm)
- Florida Parks and Recreational Facilities [https://etdmpub.florida-et.org/metadata/gc\\_parks.htm](https://etdmpub.florida-et.org/metadata/gc_parks.htm)
- Religious Centers [https://etdmpub.florida-et.org/metadata/gc\\_religion.htm](https://etdmpub.florida-et.org/metadata/gc_religion.htm)
- Florida Public and Private Schools [https://etdmpub.florida-et.org/metadata/gc\\_schools.htm](https://etdmpub.florida-et.org/metadata/gc_schools.htm)
- Social Service Centers [https://etdmpub.florida-et.org/metadata/gc\\_socialservice.htm](https://etdmpub.florida-et.org/metadata/gc_socialservice.htm)
- Assisted Rental Housing Units in Florida [https://etdmpub.florida-et.org/metadata/gc\\_assisted\\_housing.htm](https://etdmpub.florida-et.org/metadata/gc_assisted_housing.htm)
- Group Care Facilities <https://etdmpub.florida-et.org/metadata/groupcare.htm>
- Mobile Home Parks in Florida [https://etdmpub.florida-et.org/metadata/gc\\_mobilehomes.htm](https://etdmpub.florida-et.org/metadata/gc_mobilehomes.htm)
- Migrant Camps in Florida <https://etdmpub.florida-et.org/metadata/migrant.htm>
- Veteran Organizations and Facilities [https://etdmpub.florida-et.org/metadata/gc\\_veterans.htm](https://etdmpub.florida-et.org/metadata/gc_veterans.htm)
- Generalized Land Use - Florida DOT District 7 [https://etdmpub.florida-et.org/metadata/d7\\_lu\\_gen.htm](https://etdmpub.florida-et.org/metadata/d7_lu_gen.htm)
- Census Block Groups in Florida [https://etdmpub.florida-et.org/metadata/e2\\_cenacs\\_cci.htm](https://etdmpub.florida-et.org/metadata/e2_cenacs_cci.htm)
- 1990 Census Block Groups in Florida [https://etdmpub.florida-et.org/metadata/e2\\_cenblkgrp\\_1990\\_cci.htm](https://etdmpub.florida-et.org/metadata/e2_cenblkgrp_1990_cci.htm)
- 2000 Census Block Groups in Florida [https://etdmpub.florida-et.org/metadata/e2\\_cenblkgrp\\_2000\\_cci.htm](https://etdmpub.florida-et.org/metadata/e2_cenblkgrp_2000_cci.htm)
- 2010 Census Block Groups in Florida [https://etdmpub.florida-et.org/metadata/e2\\_cenblkgrp\\_2010\\_cci.htm](https://etdmpub.florida-et.org/metadata/e2_cenblkgrp_2010_cci.htm)