

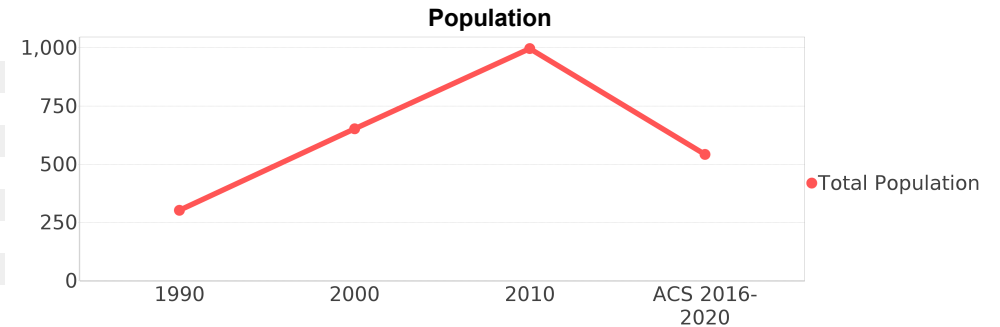
Chaires (CDP)

Area: 2.289 square miles
Jurisdiction - Cities: Tallahassee
Jurisdiction - Counties: Leon



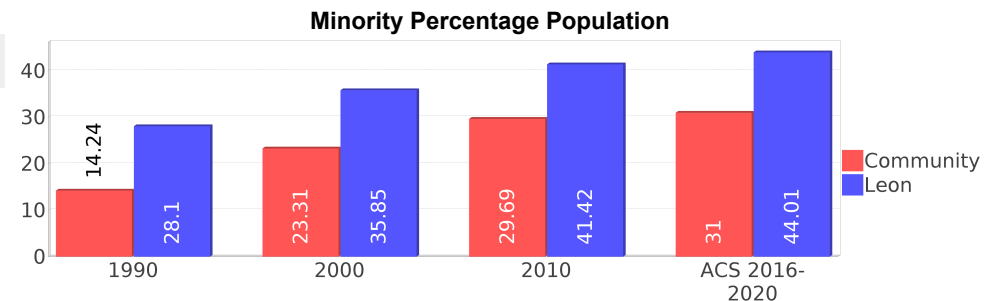
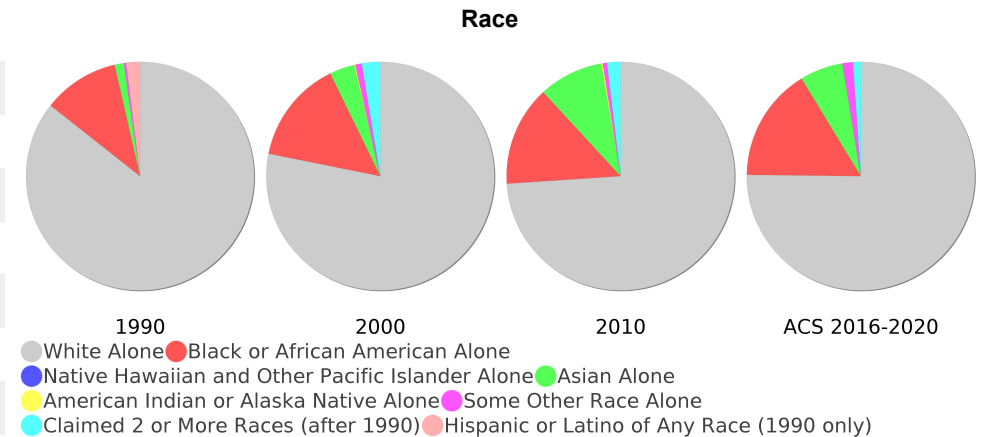
General Population Trends

Description	1990	2000	2010 ¹	ACS 2016-2020
Total Population	302	652	997	542
Total Households	102	232	359	224
Average Persons per Acre	0.21	0.45	0.93	0.41
Average Persons per Household	2.99	2.77	3.00	2.33
Average Persons per Family	3.30	3.22	3.00	2.79
Males	152	295	485	249
Females	150	357	511	292



Race and Ethnicity Trends

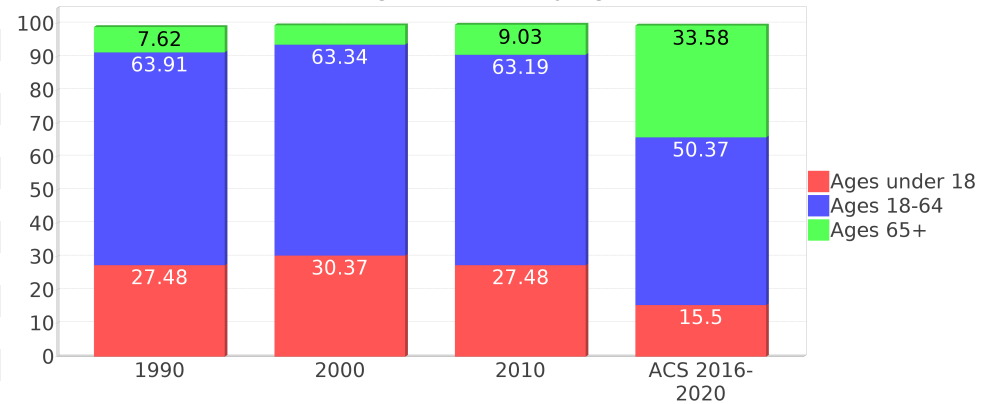
Description	1990	2000	2010 ¹	ACS 2016-2020
White Alone	262 (86.75%)	508 (77.91%)	735 (73.72%)	406 (74.91%)
Black or African American Alone	33 (10.93%)	95 (14.57%)	141 (14.14%)	87 (16.05%)
Native Hawaiian and Other Pacific Islander Alone	0 (0.00%)	0 (0.00%)	0 (0.00%)	0 (0.00%)
Asian Alone	4 (1.32%)	23 (3.53%)	91 (9.13%)	33 (6.09%)
American Indian or Alaska Native Alone	0 (0.00%)	1 (0.15%)	2 (0.20%)	0 (0.00%)
Some Other Race Alone	1 (0.33%)	6 (0.92%)	6 (0.60%)	8 (1.48%)
Claimed 2 or More Races	NA (NA)	17 (2.61%)	19 (1.91%)	6 (1.11%)
Hispanic or Latino of Any Race	6 (1.99%)	21 (3.22%)	44 (4.41%)	37 (6.83%)
Not Hispanic or Latino	296 (98.01%)	631 (96.78%)	953 (95.59%)	505 (93.17%)
Minority	43 (14.24%)	152 (23.31%)	296 (29.69%)	168 (31.00%)



Age Trends

Description	1990	2000	2010 ¹	ACS 2016-2020
Under Age 5	6.29%	7.98%	6.32%	1.29%
Ages 5-17	21.19%	22.39%	21.16%	14.21%
Ages 18-21	5.63%	4.29%	3.71%	0.74%
Ages 22-29	6.95%	4.45%	5.32%	7.38%
Ages 30-39	17.88%	22.24%	13.64%	7.75%
Ages 40-49	19.87%	18.10%	17.85%	11.62%
Ages 50-64	13.58%	14.26%	22.67%	22.88%
Age 65 and Over	7.62%	5.83%	9.03%	33.58%
-Ages 65-74	5.30%	3.68%	5.62%	19.37%
-Ages 75-84	1.66%	1.53%	2.51%	11.62%
-Age 85 and Over	0.33%	0.31%	0.80%	2.40%
Median Age	NA	37	40	55

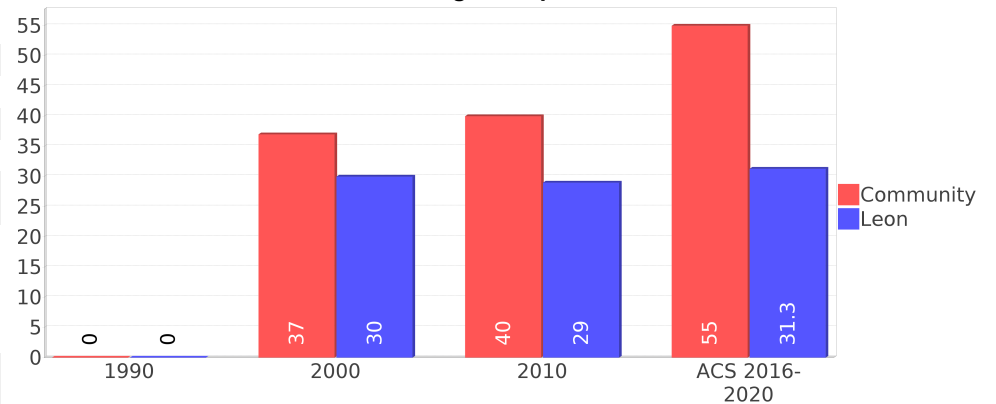
Percentage Population by Age Group



Income Trends

Description	1990	2000	2010 ¹	ACS 2016-2020
Median Household Income	\$45,619	\$63,173	\$93,021	\$79,306
Median Family Income	\$50,716	\$68,214	\$97,419	\$89,531
Population below Poverty Level	1.99%	2.61%	1.60%	8.30%
Households below Poverty Level	3.92%	2.16%	2.79%	8.93%
Households with Public Assistance Income	0.98%	0.86%	0.84%	1.34%

Median Age Comparison



Disability Trends

See the Data Sources section below for an explanation about the differences in disability data among the various years.

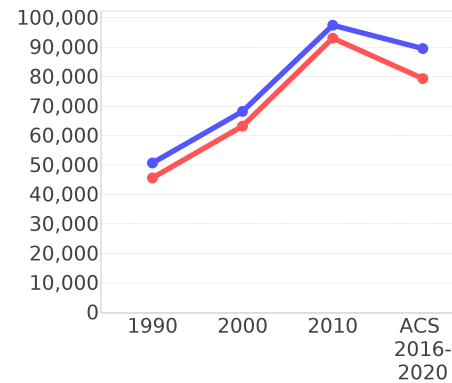
Description	1990	2000	2010 ¹	ACS 2016-2020
Population 16 To 64 Years with a disability	8 (3.62%)	46 (7.68%)	(NA)	(NA)
Population 20 To 64 Years with a disability	(NA)	(NA)	(NA)	30 (11.03%)

Educational Attainment Trends

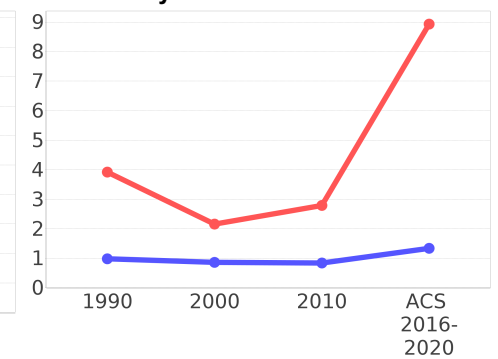
Age 25 and Over

Description	1990	2000	2010 ¹	ACS 2016-2020
Less than 9th Grade	8 (4.17%)	11 (2.67%)	2 (0.32%)	11 (2.49%)
9th to 12th Grade, No Diploma	12 (6.25%)	19 (4.61%)	12 (1.95%)	7 (1.58%)
High School Graduate or Higher	171 (89.06%)	381 (92.48%)	601 (97.56%)	423 (95.70%)
Bachelor's Degree or Higher	93 (48.44%)	214 (51.94%)	340 (55.19%)	246 (55.66%)

Income Trends



Poverty and Public Assistance



Language Trends

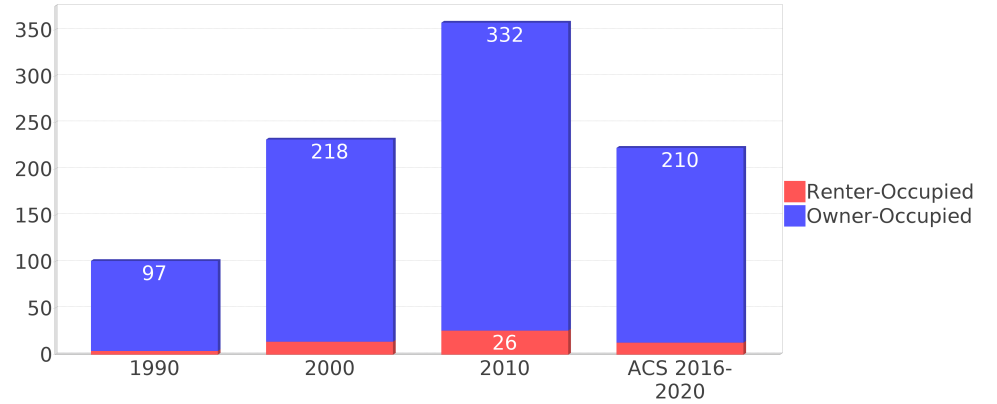
Age 5 and Over

Description	1990	2000	2010 ¹	ACS 2016-2020
Speaks English Well	0 (0.00%)	5 (0.83%)	39 (4.49%)	4 (0.75%)
Speaks English Not Well	NA (NA)	0 (0.00%)	6 (0.69%)	0 (0.00%)
Speaks English Not at All	NA (NA)	0 (0.00%)	0 (0.00%)	2 (0.37%)
Speaks English Not Well or Not at All	0 (0.00%)	0 (0.00%)	6 (0.69%)	2 (0.37%)
Speaks English Less than Very Well	NA (NA)	5 (0.83%)	45 (5.18%)	7 (1.31%)

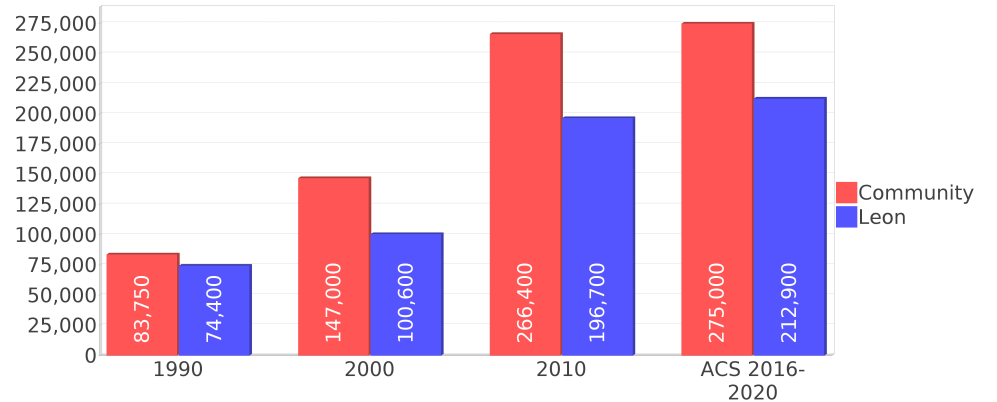
Housing Trends

Description	1990	2000	2010 ¹	ACS 2016-2020
Total	104	240	373	247
Units per Acre	0.08	0.17	0.28	0.17
Single-Family Units	94	221	340	220
Multi-Family Units	0	2	3	5
Mobile Home Units	7	16	22	21
Owner-Occupied Units	97	218	332	210
Renter-Occupied Units	4	14	26	13
Vacant Units	2	7	14	23
Median Housing Value	\$83,750	\$147,000	\$266,400	\$275,000
Occupied Housing Units w/No Vehicle	0 (0.00%)	5 (2.15%)	5 (1.39%)	3 (1.34%)

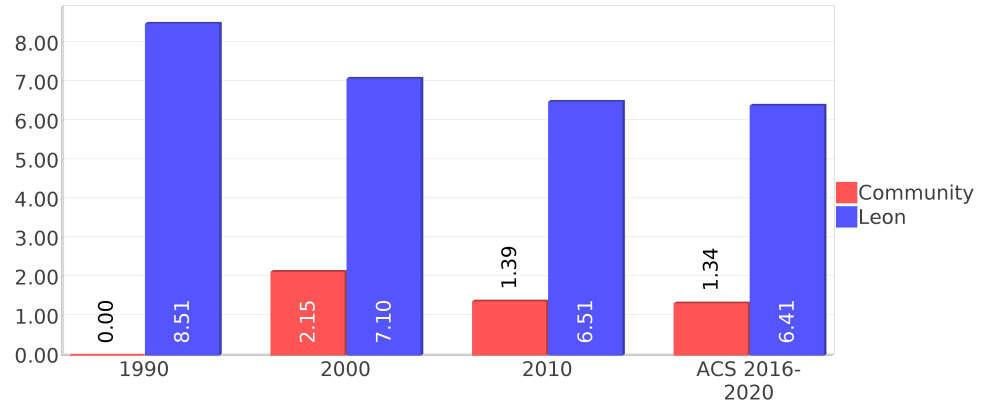
Housing Tenure



Median Housing Value Comparison



Occupied Units With No Vehicles Available



Geographic Mobility

Description	ACS 2016-2020
Median year householder moved into unit - Total	2005
Median year householder moved into unit - Owner Occupied	2003
Median year householder moved into unit - Renter Occupied	2010
Abroad 1 year ago	0
Different house in United States 1 year ago	42
Same house 1 year ago	500
Geographical Mobility in the Past Year - Total	542

Computers and Internet

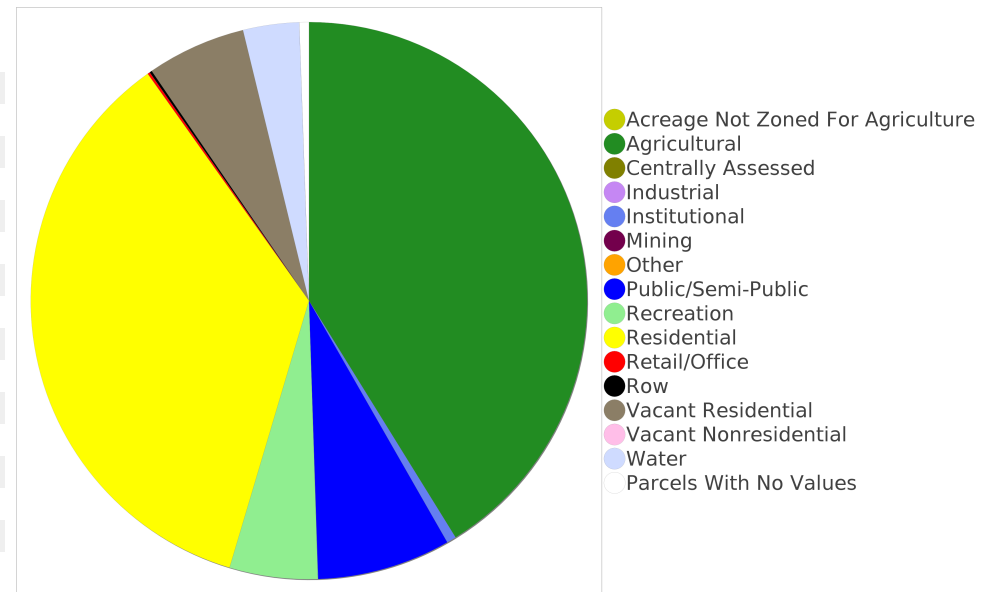
Description	ACS 2016-2020
Total Households Types of Computers in HH	224
Households with 1 or more device	219
Households with no computer	4
Total Households Presence and Types of Internet Subscriptions	224
Households with an internet subscription	204
Households with internet access without a subscription	7
Households with no internet access	11

Household Languages

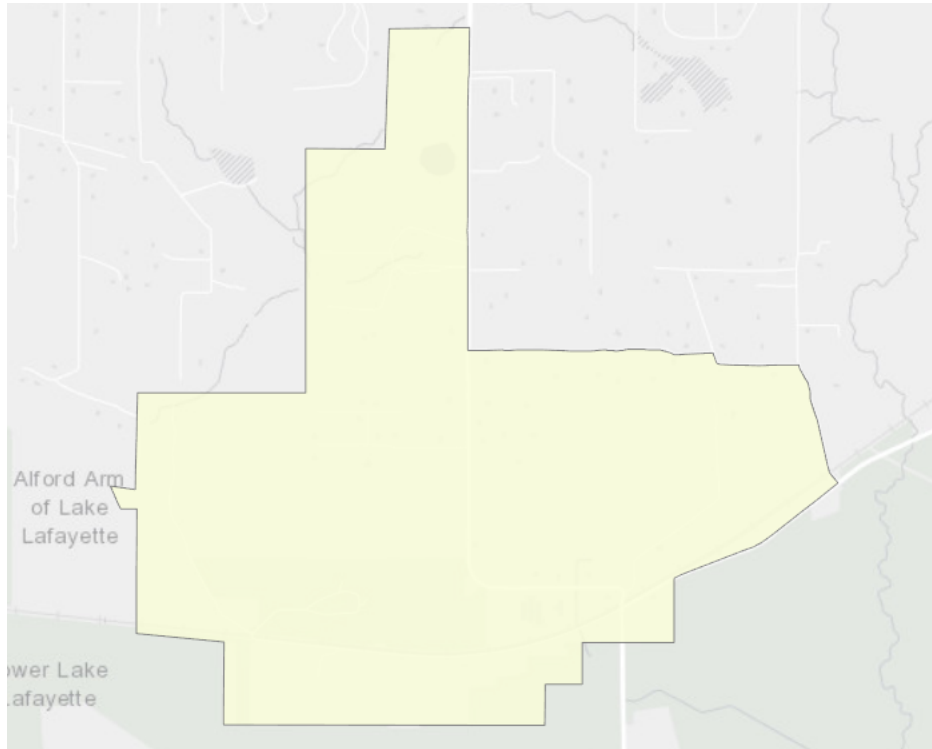
Description	ACS 2016-2020
Total Households by Household Language	224
Household Not Limited English Speaking Status	222
Spanish: Limited English speaking household	0
Indo-European languages: Limited English speaking household	1
Asian and Pacific Island languages: Limited English speaking household	0
Other languages: Limited English speaking household	0

Existing Land Use

Land Use Type	Acres	Percentage
Acreage Not Zoned For Agriculture	0	0.00%
Agricultural	594	40.55%
Centrally Assessed	0	0.00%
Industrial	0	0.00%
Institutional	8	0.55%
Mining	0	0.00%
Other	0	0.00%
Public/Semi-Public	112	7.64%
Recreation	74	5.05%
Residential	513	35.02%
Retail/Office	2	0.14%
Row	2	0.14%
Vacant Residential	83	5.67%
Vacant Nonresidential	0	0.00%
Water	47	3.21%
Parcels With No Values	8	0.55%



Location Maps



Community Facilities

The community facilities information below is useful in a variety of ways for environmental evaluations. These community resources should be evaluated for potential sociocultural effects, such as accessibility and relocation potential. The facility types may indicate the types of population groups present in the project study area. Facility staff and leaders can be sources of community information such as who uses the facility and how it is used. Additionally, community facilities are potential public meeting venues.

Community and Fraternal Centers

Facility Name	Address	Zip Code
CHAIRS CAPITOLA COMMUNITY CENTER	4810 CHAIRES CROSS RD	32317

Fire Department and Rescue Station Facilities

Facility Name	Address	Zip Code
CHAIRS-CAPITOLA VOLUNTEER FIRE DEPARTMENT (COLOCATED FACILITY)	4701 CHAIRES CROSS RD	32317
TALLAHASSEE FIRE DEPARTMENT AND RESCUE STATION 12	4701 CHAIRES CROSS RD	32317

Florida Parks and Recreational Facilities

Facility Name	Address	Zip Code
DANIEL B CHAIRES COMMUNITY PARK	4768 CHAIRES CROSS RD	32317
LAKE LAFAYETTE BOAT RAMP	ROAD TO THE LAKE RD	32317

Religious Centers

Facility Name	Address	Zip Code
CHAIRS UNITED METHODIST	9243 PARKHILL ROAD	32317
SAINT PAUL AFRICAN METHODIST EPISCOPAL CHURCH	9469 ROAD TO THE LAKE ROAD	32317
ST PETERS MISSIONARY BAPTIST CHURCH	10150 CAPITOLA ROAD	32317

Public Schools

Facility Name	Address	Zip Code
CHAIRS ELEMENTARY SCHOOL	4774 CHAIRES CROSSROADS	32317

Group Care Facilities

Facility Name	Address	Zip Code
L & L ASSISTED LIVING COMMUNITY	4211 CHAIRES CROSS ROAD	32317
CHAIRS SCHOOL	4774 CHAIRES CROSS ROAD	32317

Block Groups

The following Census Block Groups were used to calculate demographics for this report.

1990 Census Block Groups

120730025025, 120730025035

2000 Census Block Groups

120730025043, 120730025026, 120730025064

2010 Census Block Groups

120730025071, 120730025131, 120730025103

Census Block Groups

120730025133, 120730025172, 120730025071

Data Sources

ACS vs Census Data

(1) The 2010 Census data is represented by a combination of decennial and ACS (2006-2010) data. The General Population Trends, Race and Ethnicity Trends, Age Trends are entirely from decennial. The Income Trends, Language Trends are entirely from the ACS. The Housing Trends section is derived from both: Decennial (Total # Housing Units, Housing Units per Acre, Owner-Occupied Units, Renter-Occupied Units, Vacant Units); ACS (Single Family Units, Multi-family Units, Mobile Homes, Median Housing Value, Occupied Housing Units w/No Vehicle).

Area

(2) The geographic area of the community based on a user-defined community boundary or area of interest (AOI) boundary.

Jurisdiction

(3) Jurisdiction(s) includes local government boundaries that intersect the user-defined community or AOI boundary.

Goals, Values and History

(4) Information under the headings Goals and Values and History is entered manually by the user before the Sociocultural Data Report (SDR) is generated. This information is usually not available for communities with boundaries that are based on Census-defined places (i.e., not user-specified).

Demographic Data

(5) Demographic data reported under the headings General Population Trends, Race and Ethnicity Trends, Age Trends, Income Trends, Educational Attainment Trends, Language Trends, and Housing Trends is from the U.S. Decennial Census for 1990 and 2000 and the American Community Survey (ACS) 5-year estimates for 2006-2010 and ACS 2016-2020. The data was gathered at the block group level for user-defined communities, Census places, and AOIs, and at the county level for counties. Depending on the dataset, the data represents 100% counts (Census Summary File 1) or sample-based information (Census Summary File 3 or ACS).

About the Census Data

(6) The block group analysis for ETDM project analysis areas, user-defined communities, Census places, and AOI boundaries do not always correspond precisely to block group boundaries. To estimate the actual population more accurately, the SDR analysis adjusts the geographic area and data of affected block groups using the following methodology:

Delete overlapping census blocks with extremely low populations (2 or fewer people)
Remove the portion of the block group that lies outside of the analysis area
Recalculate the demographics assuming an equal area distribution of the population

Note that there may be areas where there is no population.

(7) Use caution when comparing the 100% count data (Decennial Census) to the sample-based data (ACS). In any given year, about one in 40 U.S. households will receive the ACS questionnaire. Over any five-year period, about one in eight households will receive the questionnaire, as compared to about one in six that received the long form questionnaire for the Decennial Census 2000. (Source: https://www.census.gov/content/dam/Census/programs-surveys/acs/news/10ACS_keyfacts.pdf) The U.S. Census Bureau provides help with this process: <https://www.census.gov/programs-surveys/acs/guidance/comparing-acs-data.html>

(8) Use caution when interpreting changes in race and ethnicity over time. Starting with the 2000 Decennial Census, respondents were given a new option of selecting one or more race categories. Also in 2000, the placement of the question about Hispanic origin changed, helping to increase responsiveness to the Hispanic-origin question. Because of these and other changes, the 1990 data on race and ethnicity are not directly comparable with data from later censuses. (Source: <http://www.census.gov/prod/2001pubs/c2kbr01-1.pdf>; <http://www.census.gov/pred/www/rpts/Race and Ethnicity FINAL report.pdf>)

(9) The "Minority" calculations are derived from Census and ACS data using both the race and ethnicity responses. On this report, "Minority" refers to individuals who list a race other than White and/or list their ethnicity as Hispanic/Latino. In other words, people who are multi-racial, any single race other than White, or Hispanic/Latino of any race are considered minorities.

(10) Disability data is not included in the 2010 Decennial Census or the 2006-2010 ACS. This data is available in the ACS 2016-2020 ACS. Because of changes made to the Census and ACS questions between 1990 and ACS, disability variables should not be compared from year to year. For example: 1) with the 1990 data, the disabilities are listed as a "work disability" while this distinction is not made with 2000 or ACS data; 2) the ACS data includes the institutionalized population (e.g. persons in prisons and group homes) while this population is not included in 1990 or 2000; and 3) the age groupings changed over the years.

(11) The category Bachelor's Degree or Higher under the heading Educational Attainment Trends is a subset of the category High School Graduate or Higher.

(12) Income of households. This includes the income of the householder and all other individuals 15 years old and over in the household, whether they are related to the householder or not. Because many households consist of only one person, average household income is usually less than average family income.

(13) Income of families. In compiling statistics on family income, the incomes of all members 15 years old and over related to the householder are summed and treated as a single amount.

(14) Age trends. The median age for 1990 is not available.

Land Use Data

(15) The Land Use information Indicates acreages and percentages for the generalized land use types used to group parcel-specific, existing land use assigned by the county property appraiser office according to the Florida Department of Revenue land use codes.

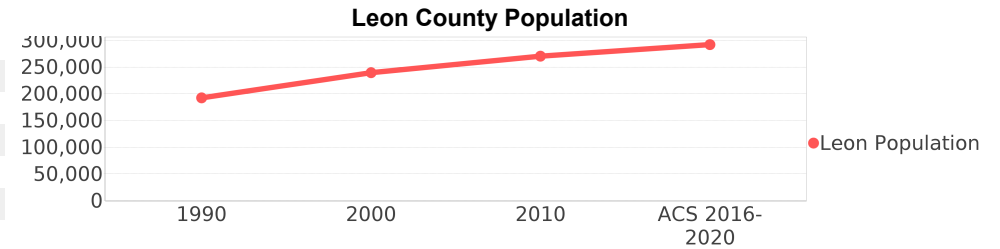
Community Facilities Data

- (16) Assisted Rental Housing Units - Identifies multifamily rental developments that receive funding assistance under federal, state, and local government programs to offer affordable housing as reported by the Shimberg Center for Housing Studies, University of Florida.
- (17) Mobile Home Parks - Identifies approved or acknowledged mobile home parks reported by the Florida Department of Business and Professional Regulation and Florida Department of Health.
- (18) Migrant Camps - Identifies migrant labor camp facilities inspected by the Florida Department of Health.
- (19) Group Care Facilities - Identifies group care facilities inspected by the Florida Department of Health.
- (20) Community Center and Fraternal Association Facilities - Identifies facilities reported by multiple sources.
- (21) Law Enforcement Correctional Facilities - Identifies facilities reported by multiple sources.
- (22) Cultural Centers - Identifies cultural centers including organizations, buildings, or complexes that promote culture and arts (e.g., aquariums and zoological facilities; arboreta and botanical gardens; dinner theaters; drive-ins; historical places and services; libraries; motion picture theaters; museums and art galleries; performing arts centers; performing arts theaters; planetariums; studios and art galleries; and theater producers stage facilities) reported by multiple sources.
- (23) Fire Department and Rescue Station Facilities - Identifies facilities reported by multiple sources.
- (24) Government Buildings - Identifies local, state, and federal government buildings reported by multiple sources.
- (25) Health Care Facilities - Identifies health care facilities including abortion clinics, dialysis clinics, medical doctors, nursing homes, osteopaths, state laboratories/clinics, and surgicenters/walk-in clinics reported by the Florida Department of Health.
- (26) Hospital Facilities - Identifies hospital facilities reported by multiple sources.
- (27) Law Enforcement Facilities - Identifies law enforcement facilities reported by multiple sources.
- (28) Parks and Recreational Facilities - Identifies parks and recreational facilities reported by multiple sources.
- (29) Religious Center Facilities - Identifies religious centers including churches, temples, synagogues, mosques, chapels, centers, and other types of religious facilities reported by multiple sources.
- (30) Private and Public Schools - Identifies private and public schools reported by multiple sources.
- (31) Social Service Centers - Identifies social service centers reported by multiple sources.
- (32) Veteran Organizations and Facilities

Leon County Demographic Profile

General Population Trends - Leon

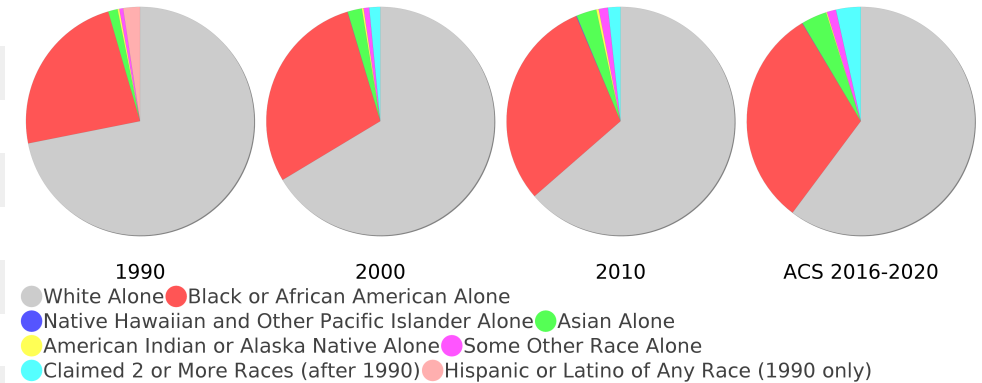
Description	1990	2000	2010 ¹	ACS 2016-2020
Total Population	192,493	239,452	270,409	291,863
Total Households	74,828	96,521	109,314	116,530
Average Persons per Acre	0.429	0.533	0.602	0.65
Average Persons per Household	2.572	2.336	2.00	2.38
Average Persons per Family	3.082	3.019	3.025	3.14
Males	92,601	113,574	128,808	138,252
Females	99,892	125,878	141,601	153,611



Race and Ethnicity Trends - Leon

Description	1990	2000	2010 ¹	ACS 2016-2020
White Alone	141,712 (73.62%)	158,999 (66.40%)	171,987 (63.60%)	175,738 (60.21%)
Black or African American Alone	46,527 (24.17%)	69,303 (28.94%)	81,192 (30.03%)	91,018 (31.19%)
Native Hawaiian and Other Pacific Islander Alone	(NA)	61 (0.03%)	188 (0.07%)	118 (0.04%)
Asian Alone	2,635 (1.37%)	4,858 (2.03%)	7,766 (2.87%)	10,573 (3.62%)
American Indian or Alaska Native Alone	500 (0.26%)	624 (0.26%)	956 (0.35%)	395 (0.14%)
Some Other Race Alone	1,060 (0.55%)	1,880 (0.79%)	3,512 (1.30%)	3,779 (1.29%)
Claimed 2 or More Races	(NA)	3,727 (1.56%)	4,808 (1.78%)	10,242 (3.51%)
Hispanic or Latino of Any Race	4,715 (2.45%)	8,220 (3.43%)	14,276 (5.28%)	19,142 (6.56%)
Not Hispanic or Latino	187,778 (97.55%)	231,232 (96.57%)	256,133 (94.72%)	272,721 (93.44%)
Minority	54,097 (28.10%)	85,834 (35.85%)	112,004 (41.42%)	128,458 (44.01%)

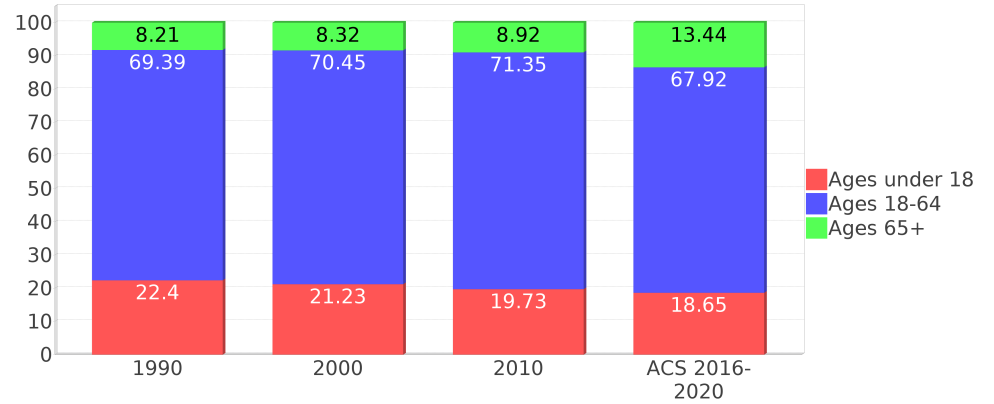
Leon County Race



Age Trends - Leon

Description	1990	2000	2010 ¹	ACS 2016-2020
Under Age 5	6.42%	5.74%	5.57%	5.18%
Ages 5-17	15.98%	15.50%	14.16%	13.47%
Ages 18-21	13.38%	13.74%	15.11%	13.66%
Ages 22-29	16.38%	15.60%	16.04%	16.03%
Ages 30-39	17.07%	13.40%	11.70%	11.88%
Ages 40-49	12.58%	14.60%	11.97%	10.46%
Ages 50-64	9.97%	13.11%	16.52%	15.90%
Age 65 and Over	8.21%	8.32%	8.92%	13.44%
-Ages 65-74	4.98%	4.44%	4.85%	8.40%
-Ages 75-84	2.51%	2.90%	2.94%	3.56%
-Age 85 and Over	0.72%	0.98%	1.13%	1.48%
Median Age	NA	30	29	31.3

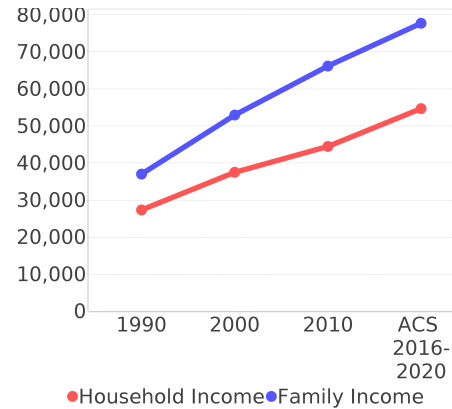
Percentage Population by Age Group - Leon



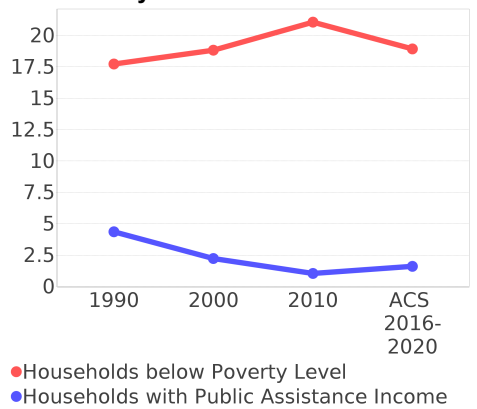
Income Trends - Leon

Description	1990	2000	2010 ¹	ACS 2016-2020
Median Household Income	\$27,323	\$37,517	\$44,490	\$54,675
Median Family Income	\$37,000	\$52,962	\$66,157	\$77,707
Population below Poverty Level	16.96%	18.19%	22.00%	19.59%
Households below Poverty Level	17.72%	18.82%	21.05%	18.91%
Households with Public Assistance Income	4.36%	2.23%	1.04%	1.60%

Income Trends



Poverty and Public Assistance



Disability Trends - Leon

See the Data Sources section below for an explanation about the differences in disability data among the various years.

Description	1990	2000	2010 ¹	ACS 2016-2020
Population 16 To 64 Years with a disability	7,471 (4.96%)	21,224 (9.58%)	NA (NA)	NA (NA)
Population 20 To 64 Years with a disability	NA (NA)	NA (NA)	NA (NA)	17,855 (10.08%)

Educational Attainment Trends - Leon

Age 25 and Over

Description	1990	2000	2010 ¹	ACS 2016-2020
Less than 9th Grade	6,046 (5.49%)	4,218 (3.07%)	3,762 (2.44%)	3,542 (2.03%)
9th to 12th Grade, No Diploma	10,622 (9.64%)	10,749 (7.82%)	10,802 (7.01%)	8,011 (4.59%)
High School Graduate or Higher	93,519 (84.87%)	122,570 (89.12%)	139,585 (90.55%)	163,114 (93.39%)
Bachelor's Degree or Higher	40,855 (37.08%)	57,396 (41.73%)	63,627 (41.28%)	81,389 (46.60%)

Language Trends - Leon

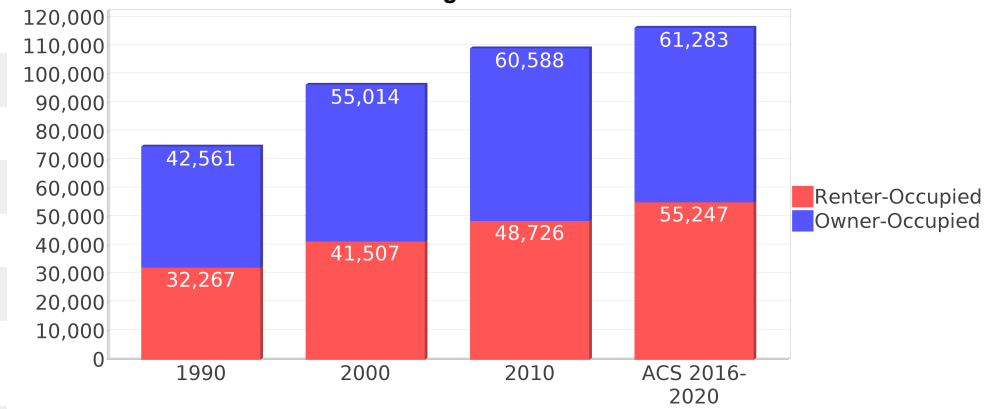
Age 5 and Over

Description	1990	2000	2010 ¹	ACS 2016-2020
Speaks English Well	2,471 (1.37%)	2,791 (1.24%)	3,996 (1.56%)	4,600 (1.66%)
Speaks English Not Well	NA (NA)	1,444 (0.64%)	2,016 (0.79%)	1,579 (0.57%)
Speaks English Not at All	NA (NA)	207 (0.09%)	403 (0.16%)	670 (0.24%)
Speaks English Not Well or Not at All	1,228 (0.68%)	1,651 (0.73%)	2,419 (0.95%)	2,249 (0.81%)
Speaks English Less than Very Well	NA (NA)	4,442 (1.97%)	6,415 (2.51%)	6,849 (2.47%)

Housing Trends - Leon

Description	1990	2000	2010 ¹	ACS 2016-2020
Total	81,325	103,974	122,500	131,341
Units per Acre	0.181	0.232	0.273	0.29
Single-Family Units	42,924	60,462	73,752	76,466
Multi-Family Units	22,384	32,144	37,505	44,169
Mobile Home Units	8,986	11,274	11,207	10,674
Owner-Occupied Units	42,561	55,014	60,588	61,283
Renter-Occupied Units	32,267	41,507	48,726	55,247
Vacant Units	6,497	7,453	13,186	14,811
Median Housing Value	\$74,400	\$100,600	\$196,700	\$212,900
Occupied Housing Units w/No Vehicle	6,371 (8.51%)	6,850 (7.10%)	7,117 (6.51%)	7,473 (6.41%)
Median year householder moved into unit - Total	NA	NA	NA	2014
Median year householder moved into unit - Owner Occupied	NA	NA	NA	2006
Median year householder moved into unit - Renter Occupied	NA	NA	NA	2016
Abroad 1 year ago	NA	NA	NA	1,738
Different house in United States 1 year ago	NA	NA	NA	66,728
Same house 1 year ago	NA	NA	NA	220,174
Geographical Mobility in the Past Year - Total	NA	NA	NA	220,174

Housing Tenure - Leon



County Data Sources

ACS vs Census Data

(1) The 2010 Census data is represented by a combination of decennial and ACS (2006-2010) data. The General Population Trends, Race and Ethnicity Trends, Age Trends are entirely from decennial. The Income Trends, Language Trends are entirely from the ACS. The Housing Trends section is derived from both: Decennial (Total # Housing Units, Housing Units per Acre, Owner-Occupied Units, Renter-Occupied Units, Vacant Units); ACS (Single Family Units, Multi-family Units, Mobile Homes, Median Housing Value, Occupied Housing Units w/No Vehicle).

About the Census Data

(34) Use caution when comparing the 100% count data (Decennial Census) to the sample-based data (ACS). In any given year, about one in 40 U.S. households will receive the ACS questionnaire. Over any five-year period, about one in eight households will receive the questionnaire, as compared to about one in six that received the long form questionnaire for the Decennial Census 2000. (Source: https://www.census.gov/content/dam/Census/programs-surveys/acs/news/10ACS_keyfacts.pdf) The U.S. Census Bureau provides help with this process: <https://www.census.gov/programs-surveys/acs/guidance/comparing-acs-data.html>

(35) Use caution when interpreting changes in race and ethnicity over time. Starting with the 2000 Decennial Census, respondents were given a new option of selecting one or more race categories. Also in 2000, the placement of the question about Hispanic origin changed, helping to increase responsiveness to the Hispanic-origin question. Because of these and other changes, the 1990 data on race and ethnicity are not directly comparable with data from later censuses. (Source: <http://www.census.gov/prod/2001pubs/c2kbr01-1.pdf>; [http://www.census.gov/pred/www/rpts/Race and Ethnicity FINAL report.pdf](http://www.census.gov/pred/www/rpts/Race%20and%20Ethnicity%20FINAL%20report.pdf))

(36) The "Minority" calculations are derived from Census and ACS data using both the race and ethnicity responses. On this report, "Minority" refers to individuals who list a race other than White and/or list their ethnicity as Hispanic/Latino. In other words, people who are multi-racial, any single race other than White, or Hispanic/Latino of any race are considered minorities.

(37) Disability data is not included in the 2010 Decennial Census or the 2006-2010 ACS. This data is available in the ACS 2016-2020 ACS. Because of changes made to the Census and ACS questions between 1990 and ACS, disability variables should not be compared from year to year. For example: 1) with the 1990 data, the disabilities are listed as a "work disability" while this distinction is not made with 2000 or ACS data; 2) the ACS data includes the institutionalized population (e.g. persons in prisons and group homes) while this population is not included in 1990 or 2000; and 3) the age groupings changed over the years.

(38) The category Bachelor's Degree or Higher under the heading Educational Attainment Trends is a subset of the category High School Graduate or Higher.

Metadata

- (39) Community and Fraternal Centers https://etdmpub.florida-estat.org/meta/gc_communitycenter.xml
- (40) Correctional Facilities in Florida https://etdmpub.florida-estat.org/meta/gc_correctional.xml
- (41) Cultural Centers in Florida https://etdmpub.florida-estat.org/meta/gc_culturecenter.xml
- (42) Fire Department and Rescue Station Facilities in Florida https://etdmpub.florida-estat.org/meta/gc_firestat.xml
- (43) Local, State, and Federal Government Buildings in Florida https://etdmpub.florida-estat.org/meta/gc_govbuild.xml
- (44) Florida Health Care Facilities https://etdmpub.florida-estat.org/meta/gc_health.xml
- (45) Hospital Facilities in Florida https://etdmpub.florida-estat.org/meta/gc_hospitals.xml
- (46) Law Enforcement Facilities in Florida https://etdmpub.florida-estat.org/meta/gc_lawenforce.xml
- (47) Florida Parks and Recreational Facilities https://etdmpub.florida-estat.org/meta/gc_parks.xml
- (48) Religious Centers https://etdmpub.florida-estat.org/meta/gc_religion.xml
- (49) Florida Public and Private Schools https://etdmpub.florida-estat.org/meta/gc_schools.xml
- (50) Social Service Centers https://etdmpub.florida-estat.org/meta/gc_socialservice.xml
- (51) Assisted Rental Housing Units in Florida https://etdmpub.florida-estat.org/meta/gc_assisted_housing.xml
- (52) Group Care Facilities <https://etdmpub.florida-estat.org/meta/groupcare.xml>
- (53) Mobile Home Parks in Florida https://etdmpub.florida-estat.org/meta/gc_mobilehomes.xml
- (54) Migrant Camps in Florida <https://etdmpub.florida-estat.org/meta/migrant.xml>
- (55) Veteran Organizations and Facilities https://etdmpub.florida-estat.org/meta/gc_veterans.xml
- (56) Generalized Land Use https://etdmpub.florida-estat.org/meta/lu_gen.xml
- (57) Census Block Groups in Florida https://etdmpub.florida-estat.org/meta/e2_cenacs_cci.xml
- (58) 1990 Census Block Groups in Florida https://etdmpub.florida-estat.org/meta/e2_cenblkgrp_1990_cci.xml
- (59) 2000 Census Block Groups in Florida https://etdmpub.florida-estat.org/meta/e2_cenblkgrp_2000_cci.xml
- (60) 2010 Census Block Groups in Florida https://etdmpub.florida-estat.org/meta/e2_cenblkgrp_2010_cci.xml