

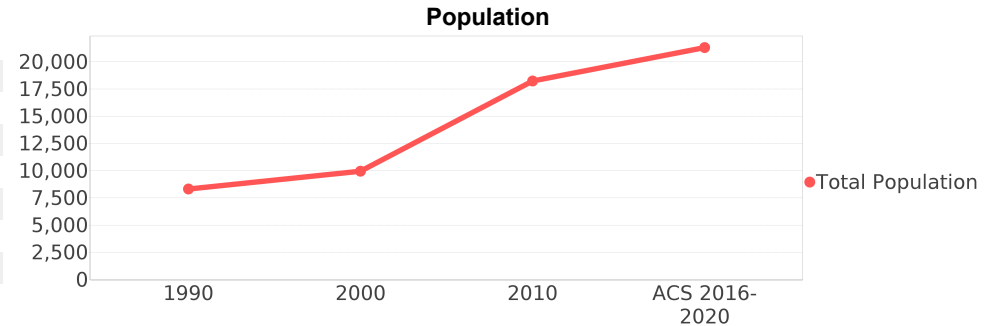
Pace (CDP)

Area: 24,516 square miles
Jurisdiction - Cities: NA
Jurisdiction - Counties: Santa rosa



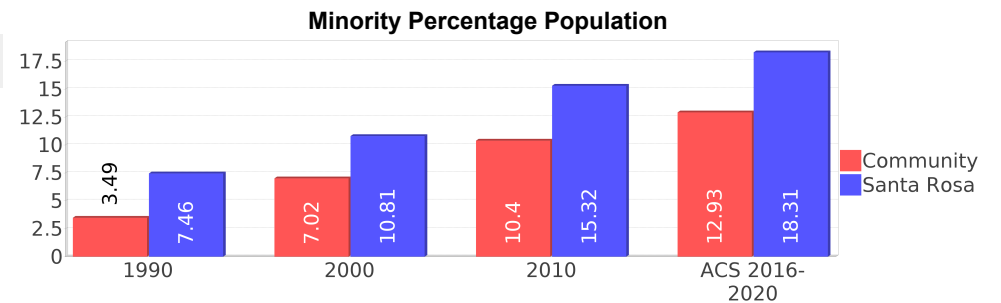
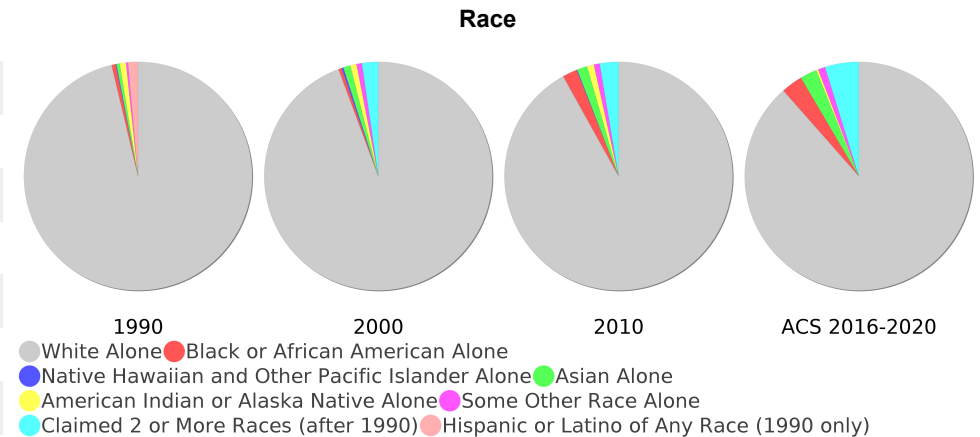
General Population Trends

Description	1990	2000	2010 ¹	ACS 2016-2020
Total Population	8,333	9,959	18,245	21,318
Total Households	3,023	3,662	6,753	7,825
Average Persons per Acre	0.94	1.03	1.49	1.64
Average Persons per Household	2.77	2.71	2.75	2.68
Average Persons per Family	3.17	3.12	2.99	3.16
Males	4,132	4,979	8,915	10,277
Females	4,200	4,980	9,330	11,040



Race and Ethnicity Trends

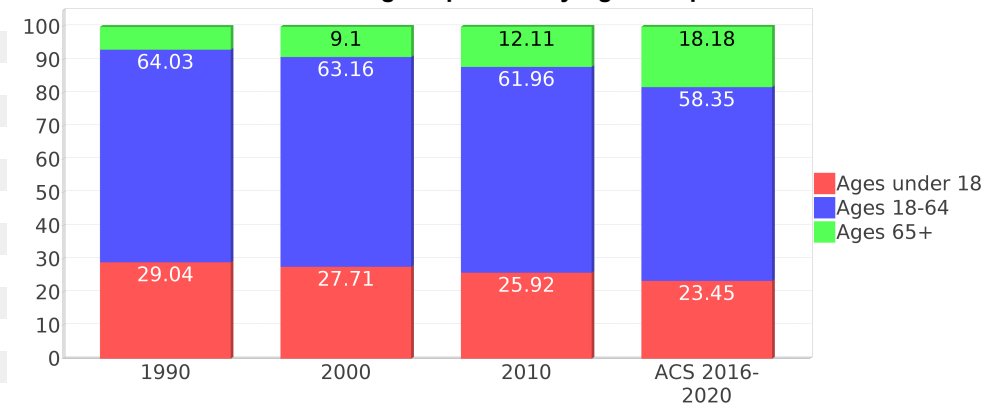
Description	1990	2000	2010 ¹	ACS 2016-2020
White Alone	8,134 (97.61%)	9,391 (94.30%)	16,770 (91.92%)	18,861 (88.47%)
Black or African American Alone	47 (0.56%)	46 (0.46%)	373 (2.04%)	648 (3.04%)
Native Hawaiian and Other Pacific Islander Alone	10 (0.12%)	28 (0.28%)	21 (0.12%)	0 (0.00%)
Asian Alone	39 (0.47%)	99 (0.99%)	264 (1.45%)	506 (2.37%)
American Indian or Alaska Native Alone	76 (0.91%)	89 (0.89%)	179 (0.98%)	61 (0.29%)
Some Other Race Alone	23 (0.28%)	75 (0.75%)	148 (0.81%)	217 (1.02%)
Claimed 2 or More Races	NA (NA)	230 (2.31%)	486 (2.66%)	1,022 (4.79%)
Hispanic or Latino of Any Race	120 (1.44%)	206 (2.07%)	642 (3.52%)	568 (2.66%)
Not Hispanic or Latino	8,213 (98.56%)	9,753 (97.93%)	17,603 (96.48%)	20,750 (97.34%)
Minority	291 (3.49%)	699 (7.02%)	1,897 (10.40%)	2,756 (12.93%)



Age Trends

Description	1990	2000	2010 ¹	ACS 2016-2020
Under Age 5	8.41%	6.69%	5.93%	6.19%
Ages 5-17	20.63%	21.03%	19.99%	17.27%
Ages 18-21	5.26%	5.19%	5.17%	4.44%
Ages 22-29	13.13%	8.73%	8.25%	11.62%
Ages 30-39	18.80%	16.19%	12.03%	12.49%
Ages 40-49	14.27%	16.63%	16.71%	11.39%
Ages 50-64	12.58%	16.43%	19.79%	18.41%
Age 65 and Over	6.85%	9.10%	12.11%	18.18%
-Ages 65-74	4.64%	6.36%	7.91%	9.51%
-Ages 75-84	1.87%	2.35%	3.42%	7.18%
-Age 85 and Over	0.32%	0.38%	0.77%	1.48%
Median Age	NA	36	39	43

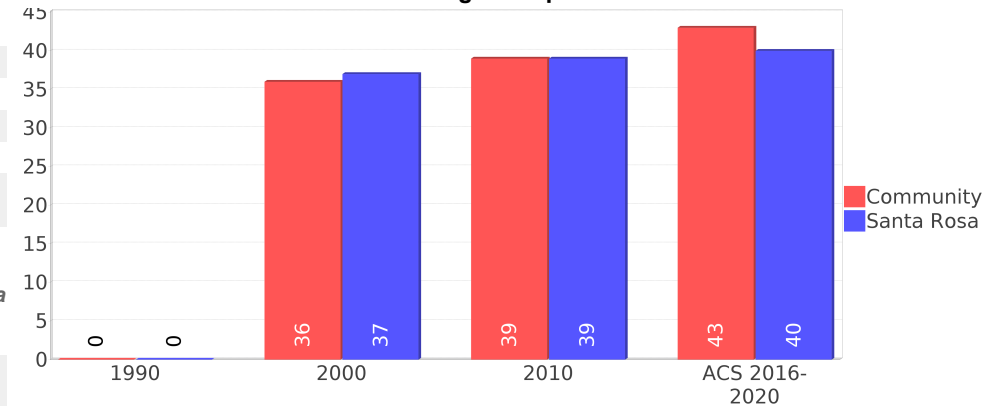
Percentage Population by Age Group



Income Trends

Description	1990	2000	2010 ¹	ACS 2016-2020
Median Household Income	\$31,056	\$41,509	\$49,231	\$64,944
Median Family Income	\$34,318	\$44,862	\$58,500	\$66,936
Population below Poverty Level	13.98%	10.11%	10.63%	10.20%
Households below Poverty Level	14.52%	10.90%	10.81%	9.15%
Households with Public Assistance Income	6.88%	3.47%	1.18%	1.56%

Median Age Comparison



Disability Trends

See the Data Sources section below for an explanation about the differences in disability data among the various years.

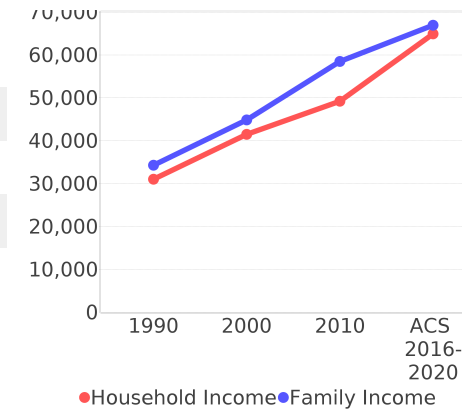
Description	1990	2000	2010 ¹	ACS 2016-2020
Population 16 To 64 Years with a disability	639 (10.55%)	1454 (15.84%)	(NA)	(NA)
Population 20 To 64 Years with a disability	(NA)	(NA)	(NA)	1600 (13.42%)

Educational Attainment Trends

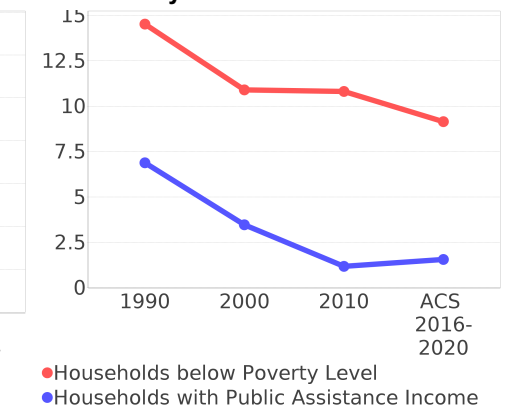
Age 25 and Over

Description	1990	2000	2010 ¹	ACS 2016-2020
Less than 9th Grade	435 (8.42%)	188 (2.93%)	247 (2.14%)	236 (1.63%)
9th to 12th Grade, No Diploma	767 (14.84%)	545 (8.50%)	882 (7.64%)	732 (5.07%)
High School Graduate or Higher	3,966 (76.74%)	5,680 (88.54%)	10,415 (90.21%)	13,474 (93.29%)
Bachelor's Degree or Higher	756 (14.63%)	1,235 (19.25%)	2,845 (24.64%)	3,824 (26.48%)

Income Trends



Poverty and Public Assistance



Language Trends

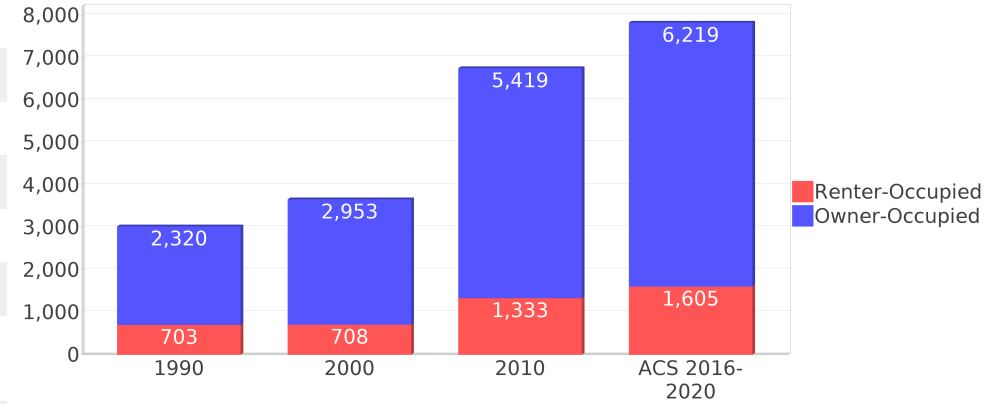
Age 5 and Over

Description	1990	2000	2010 ¹	ACS 2016-2020
Speaks English Well	19 (0.25%)	53 (0.57%)	279 (1.67%)	181 (0.91%)
Speaks English Not Well	NA (NA)	18 (0.19%)	46 (0.27%)	25 (0.13%)
Speaks English Not at All	NA (NA)	0 (0.00%)	0 (0.00%)	0 (0.00%)
Speaks English Not Well or Not at All	29 (0.38%)	18 (0.19%)	46 (0.27%)	25 (0.13%)
Speaks English Less than Very Well	NA (NA)	71 (0.76%)	326 (1.95%)	206 (1.03%)

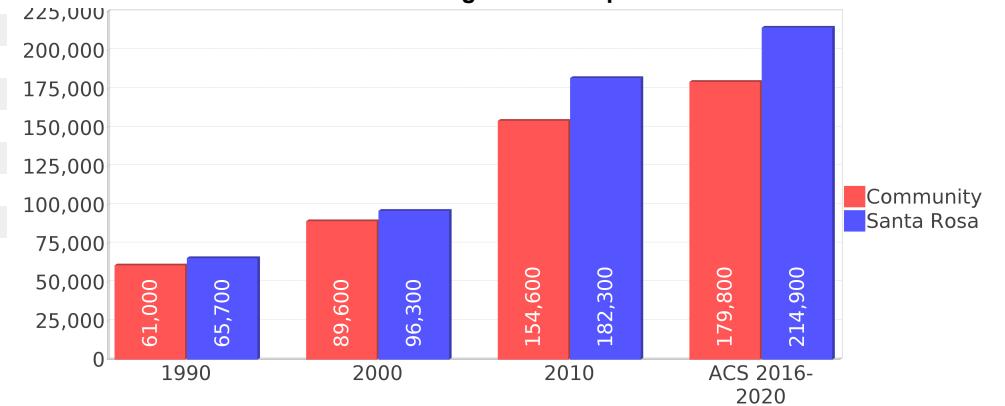
Housing Trends

Description	1990	2000	2010 ¹	ACS 2016-2020
Total	3,240	3,965	7,332	8,500
Units per Acre	0.23	0.33	0.52	0.57
Single-Family Units	2,220	3,011	5,721	7,139
Multi-Family Units	182	195	523	468
Mobile Home Units	610	757	965	882
Owner-Occupied Units	2,320	2,953	5,419	6,219
Renter-Occupied Units	703	708	1,333	1,605
Vacant Units	216	303	579	675
Median Housing Value	\$61,000	\$89,600	\$154,600	\$179,800
Occupied Housing Units w/No Vehicle	109 (3.60%)	142 (3.88%)	169 (2.50%)	220 (2.81%)

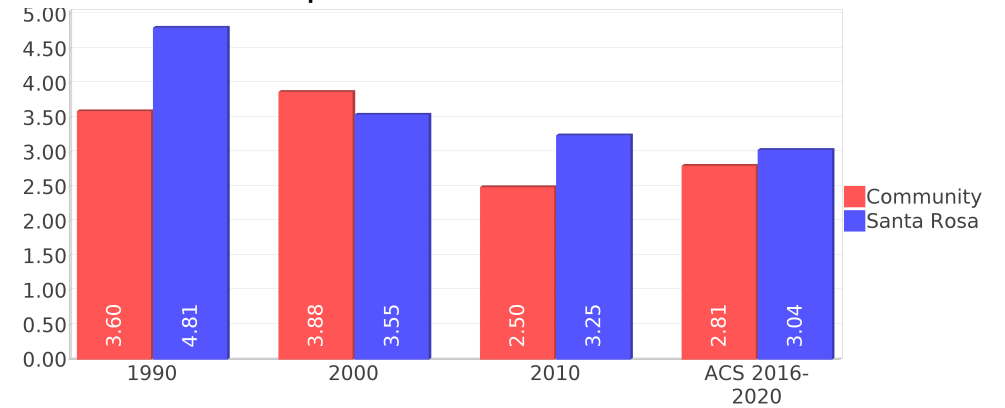
Housing Tenure



Median Housing Value Comparison



Occupied Units With No Vehicles Available



Geographic Mobility

Description	ACS 2016-2020
Median year householder moved into unit - Total	2012
Median year householder moved into unit - Owner Occupied	2009
Median year householder moved into unit - Renter Occupied	2016
Abroad 1 year ago	75
Different house in United States 1 year ago	2,482
Same house 1 year ago	18,433
Geographical Mobility in the Past Year - Total	20,991

Computers and Internet

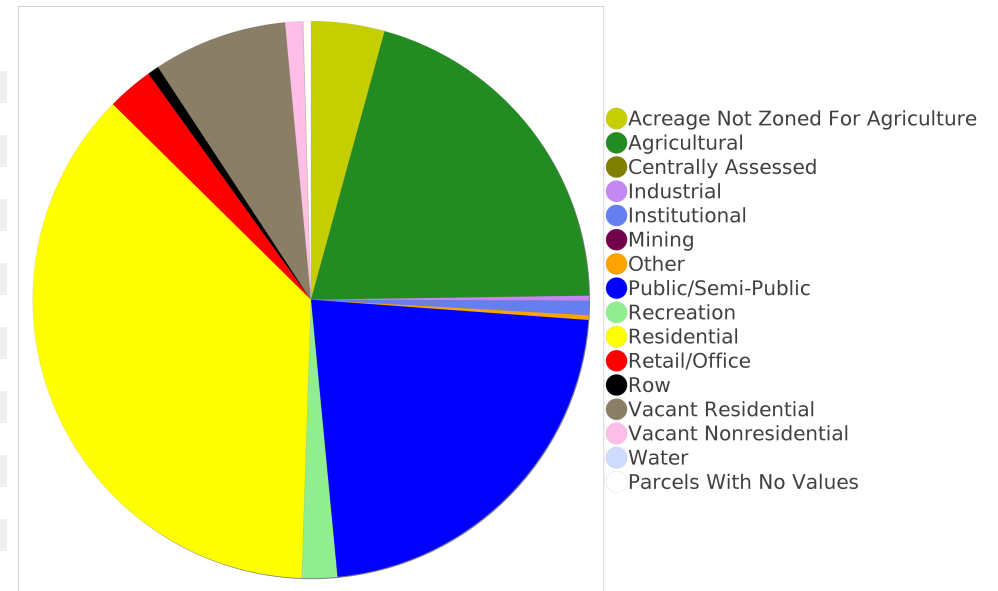
Description	ACS 2016-2020
Total Households Types of Computers in HH	7,825
Households with 1 or more device	7,383
Households with no computer	441
Total Households Presence and Types of Internet Subscriptions	7,825
Households with an internet subscription	7,188
Households with internet access without a subscription	75
Households with no internet access	561

Household Languages

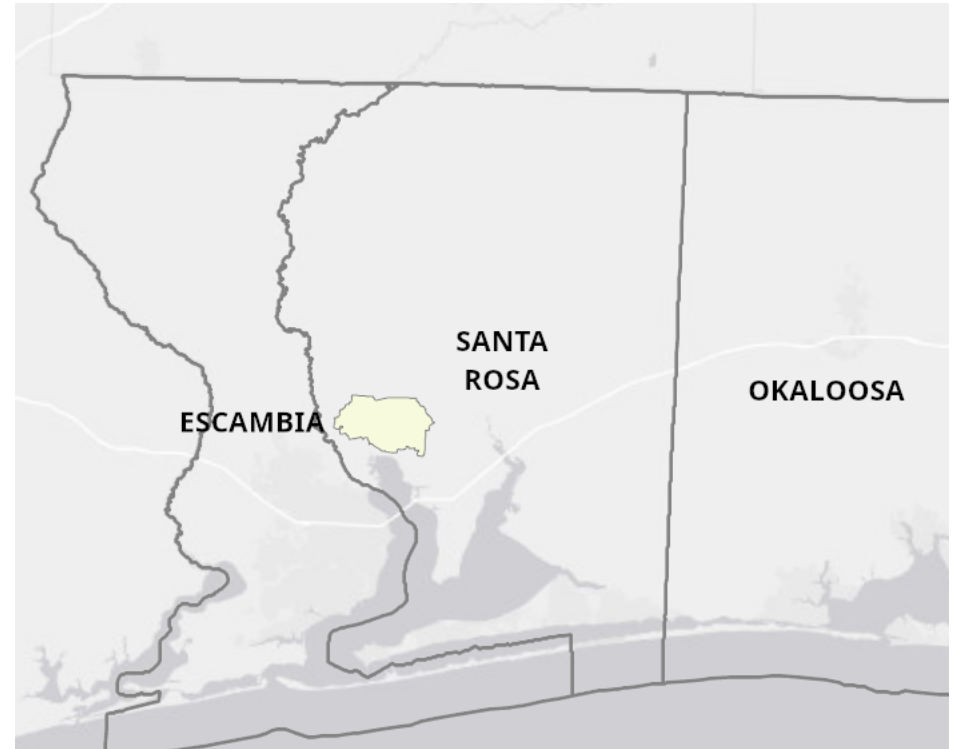
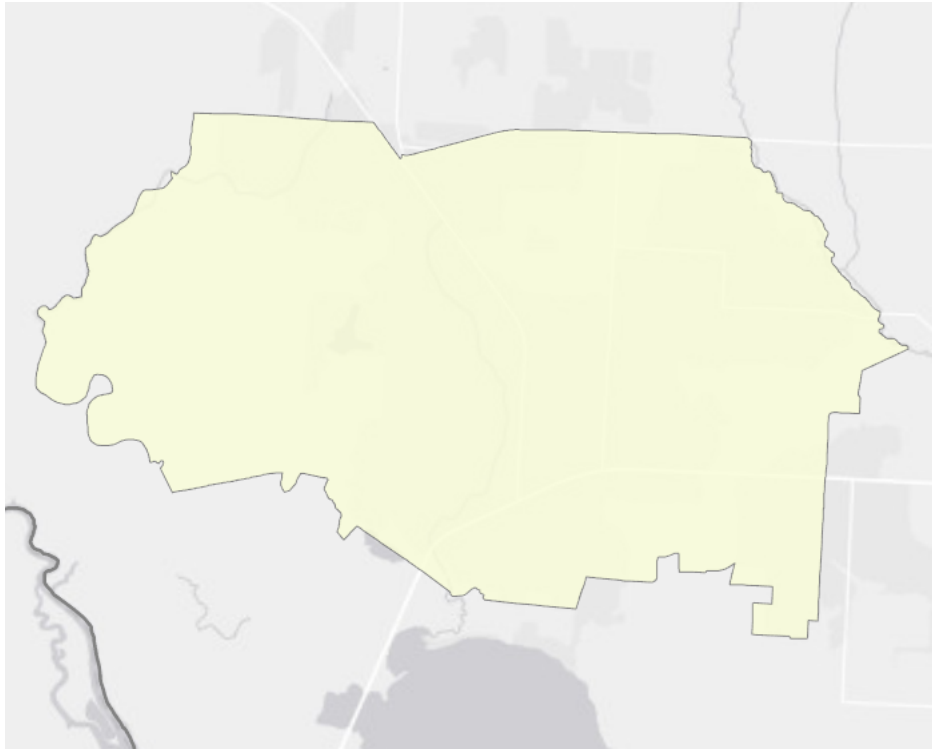
Description	ACS 2016-2020
Total Households by Household Language	7,825
Household Not Limited English Speaking Status	7,755
Spanish: Limited English speaking household	19
Indo-European languages: Limited English speaking household	15
Asian and Pacific Island languages: Limited English speaking household	35
Other languages: Limited English speaking household	0

Existing Land Use

Land Use Type	Acres	Percentage
Acreage Not Zoned For Agriculture	628	4.00%
Agricultural	3,018	19.23%
Centrally Assessed	0	0.00%
Industrial	42	0.27%
Institutional	122	0.78%
Mining	0	0.00%
Other	41	0.26%
Public/Semi-Public	3,285	20.94%
Recreation	302	1.92%
Residential	5,424	34.57%
Retail/Office	395	2.52%
Row	98	0.62%
Vacant Residential	1,145	7.30%
Vacant Nonresidential	150	0.96%
Water	4	0.03%
Parcels With No Values	65	0.41%



Location Maps



Community Facilities

The community facilities information below is useful in a variety of ways for environmental evaluations. These community resources should be evaluated for potential sociocultural effects, such as accessibility and relocation potential. The facility types may indicate the types of population groups present in the project study area. Facility staff and leaders can be sources of community information such as who uses the facility and how it is used. Additionally, community facilities are potential public meeting venues.

Assisted Rental Housing Units

Facility Name	Address	Zip Code
COUNTRY VILLAGE LTD	4260 HIGHWAY 90	32571
DEER RUN VILLAS LTD	4260 HIGHWAY 90	32571
ANDORA VILLAS APARTMENTS	4260 E. HIGHWAY 90	32571
MAGNOLIA CROSSING	4261 MAGNOLIA CROSSING CIRCLE	32571

Community and Fraternal Centers

Facility Name	Address	Zip Code
MASONIC LODGE - PACE 349 F & AM	5158 E SPENCER FIELD RD	32571

Cultural Centers

Facility Name	Address	Zip Code
RIDGE CINEMA 8	4915 HWY 90	32571
PACE LIBRARY	4750 PACE PATRIOT BLVD	32571

Fire Department and Rescue Station Facilities

Facility Name	Address	Zip Code
PACE VOLUNTEER FIRE DEPARTMENT SUBSTATION 2	5527 WOODBINE RD	32571
PACE VOLUNTEER FIRE DEPARTMENT STATION 21	4773 PACE PATRIOT BLVD	32571

Government Buildings

Facility Name	Address	Zip Code
U S POST OFFICE - CPU ALYSSAS POSTAL MARKET	4584 CHUMUCKLA HWY	32571
SANTA ROSA COUNTY TAX COLLECTOR	4487 CHUMUCKLA HWY	32571

Law Enforcement Facilities

Facility Name	Address	Zip Code
SANTA ROSA COUNTY SHERIFF'S OFFICE - DISTRICT 3	4775 PACE PATRIOT BLVD	32571

Florida Parks and Recreational Facilities

Facility Name	Address	Zip Code
PATRIOT PARK	4750 PACE PATRIOT BLVD	32571
BENNY RUSSELL PARK	5417 W SPENCER FIELD RD	32571
ROYAL PINES PUBLIC PARK	ROYAL PINES DR & WHITE RD	32571
PACE AREA RECREATION PARK	3536 LIMBAUGH LN	32571
SHADY ACRES PUBLIC PARK	CAMEO DR	32571

Religious Centers

Facility Name	Address	Zip Code
PACE FIRST UNITED METHODIST	4540 CHUMUCKLA HIGHWAY	32571
FIRST MISSIONARY BAPTIST CHURCH OF PACE	3925 PACE ROAD	32571
NEW HARVEST FELLOWSHIP CHURCH	4289 BERRYHILL RD	32571
PACE PRESBYTERIAN CHURCH	4587 WOODBINE ROAD	32571
PACE ASSEMBLY OF GOD CHURCH	3948 UNITED STATES HIGHWAY 90	32571
PACE COMMUNITY CHURCH	4310 N SPENCER FIELD ROAD	32571
LIBERTY CHURCH MILTON CAMPUS	4636 HWY 90	32571
NEW MACEDONIA BAPTIST CHURCH	4751 CHUMUCKLA HIGHWAY	32571
BIBLE BAPTIST CHURCH	4001 VERN STREET	32571
PACE CHURCH OF CHRIST	4075 BERRYHILL ROAD	32571
FLORIDATOWN BAPTIST CHURCH	3851 DIAMOND STREET	32571

Facility Name	Address	Zip Code
WOODBINE BAPTIST CHURCH	4912 WOODBINE ROAD	32571
WOODBINE UNITED METHODIST	5200 WOODBINE ROAD	32571
TRINITY BY THE FIELDS	4980 W SPENCER FIELD ROAD	32571
BERRYHILL CHURCH OF CHRIST	3679 BERRYHILL ROAD	32571
IMMANUEL BAPTIST CHURCH	4187 UNITED STATES HIGHWAY 90	32571

Public Schools

Facility Name	Address	Zip Code
S. S. DIXON INTERMEDIATE SCHOOL	5540 EDUCATION DR	32571
PACE HIGH SCHOOL	4065 NORRIS RD	32571
THOMAS L SIMS MIDDLE SCHOOL	5500 EDUCATION DR	32571
S. S. DIXON PRIMARY SCHOOL	4560 PACE PATRIOT BLVD	32571

Group Care Facilities

Facility Name	Address	Zip Code
VICTORIAN MANOR	4687 CHUMUCKLA HIGHWAY	32571
PACE HIGH SCHOOL	4065 NORRIS ROAD	32571
S.S. DIXON INTERMEDIATE	5540 EDUCATION DRIVE	32571
S.S. DIXON PRIMARY	4585 S S DIXON STREET	32571
THOMAS SIMMS MIDDLE SCHOOL	5500 EDUCATION DRIVE	32571

Block Groups

The following Census Block Groups were used to calculate demographics for this report.

1990 Census Block Groups

121130107015, 121130107017, 121130107014, 121130107012, 121130103002, 121130107018, 121130107016, 121130105006, 121130107019

2000 Census Block Groups

121130107053, 121130107033, 121130103002, 121130107031, 121130105011, 121130107052, 121130107042, 121130107041, 121130107032, 121130107051

2010 Census Block Groups

121130107071, 121130107072, 121130103001, 121130105033, 121130107081, 121130107083, 121130103003, 121130107082, 121130107053, 121130107052, 121130107051, 121130107041, 121130107042

Census Block Groups

121130107072, 121130107083, 121130103032, 121130105041, 121130107044, 121130105032, 121130107052, 121130107082, 121130103011, 121130107043, 121130105033, 121130107084, 121130103021, 121130103012, 121130107053, 121130107071, 121130107081, 121130107051, 121130107041

Data Sources

ACS vs Census Data

(1) The 2010 Census data is represented by a combination of decennial and ACS (2006-2010) data. The General Population Trends, Race and Ethnicity Trends, Age Trends are entirely from decennial. The Income Trends, Language Trends are entirely from the ACS. The Housing Trends section is derived from both: Decennial (Total # Housing Units, Housing Units per Acre, Owner-Occupied Units, Renter-Occupied Units, Vacant Units); ACS (Single Family Units, Multi-family Units, Mobile Homes, Median Housing Value, Occupied Housing Units w/No Vehicle).

Area

(2) The geographic area of the community based on a user-defined community boundary or area of interest (AOI) boundary.

Jurisdiction

(3) Jurisdiction(s) includes local government boundaries that intersect the user-defined community or AOI boundary.

Goals, Values and History

(4) Information under the headings Goals and Values and History is entered manually by the user before the Sociocultural Data Report (SDR) is generated. This information is usually not available for communities with boundaries that are based on Census-defined places (i.e., not user-specified).

Demographic Data

(5) Demographic data reported under the headings General Population Trends, Race and Ethnicity Trends, Age Trends, Income Trends, Educational Attainment Trends, Language Trends, and Housing Trends is from the U.S. Decennial Census for 1990 and 2000 and the American Community Survey (ACS) 5-year estimates for 2006-2010 and ACS 2016-2020. The data was gathered at the block group level for user-defined communities, Census places, and AOIs, and at the county level for counties. Depending on the dataset, the data represents 100% counts (Census Summary File 1) or sample-based information (Census Summary File 3 or ACS).

About the Census Data

(6) The block group analysis for ETDM project analysis areas, user-defined communities, Census places, and AOI boundaries do not always correspond precisely to block group boundaries. To estimate the actual population more accurately, the SDR analysis adjusts the geographic area and data of affected block groups using the following methodology:

Delete overlapping census blocks with extremely low populations (2 or fewer people)
Remove the portion of the block group that lies outside of the analysis area
Recalculate the demographics assuming an equal area distribution of the population

Note that there may be areas where there is no population.

(7) Use caution when comparing the 100% count data (Decennial Census) to the sample-based data (ACS). In any given year, about one in 40 U.S. households will receive the ACS questionnaire. Over any five-year period, about one in eight households will receive the questionnaire, as compared to about one in six that received the long form questionnaire for the Decennial Census 2000. (Source: https://www.census.gov/content/dam/Census/programs-surveys/acs/news/10ACS_keyfacts.pdf) The U.S. Census Bureau provides help with this process: <https://www.census.gov/programs-surveys/acs/guidance/comparing-acs-data.html>

(8) Use caution when interpreting changes in race and ethnicity over time. Starting with the 2000 Decennial Census, respondents were given a new option of selecting one or more race categories. Also in 2000, the placement of the question about Hispanic origin changed, helping to increase responsiveness to the Hispanic-origin question. Because of these and other changes, the 1990 data on race and ethnicity are not directly comparable with data from later censuses. (Source: <http://www.census.gov/prod/2001pubs/c2kbr01-1.pdf>; <http://www.census.gov/pred/www/rpts/Race and Ethnicity FINAL report.pdf>)

(9) The "Minority" calculations are derived from Census and ACS data using both the race and ethnicity responses. On this report, "Minority" refers to individuals who list a race other than White and/or list their ethnicity as Hispanic/Latino. In other words, people who are multi-racial, any single race other than White, or Hispanic/Latino of any race are considered minorities.

(10) Disability data is not included in the 2010 Decennial Census or the 2006-2010 ACS. This data is available in the ACS 2016-2020 ACS. Because of changes made to the Census and ACS questions between 1990 and ACS, disability variables should not be compared from year to year. For example: 1) with the 1990 data, the disabilities are listed as a "work disability" while this distinction is not made with 2000 or ACS data; 2) the ACS data includes the institutionalized population (e.g. persons in prisons and group homes) while this population is not included in 1990 or 2000; and 3) the age groupings changed over the years.

(11) The category Bachelor's Degree or Higher under the heading Educational Attainment Trends is a subset of the category High School Graduate or Higher.

(12) Income of households. This includes the income of the householder and all other individuals 15 years old and over in the household, whether they are related to the householder or not. Because many households consist of only one person, average household income is usually less than average family income.

(13) Income of families. In compiling statistics on family income, the incomes of all members 15 years old and over related to the householder are summed and treated as a single amount.

(14) Age trends. The median age for 1990 is not available.

Land Use Data

(15) The Land Use information indicates acreages and percentages for the generalized land use types used to group parcel-specific, existing land use assigned by the county property appraiser office according to the Florida Department of Revenue land use codes.

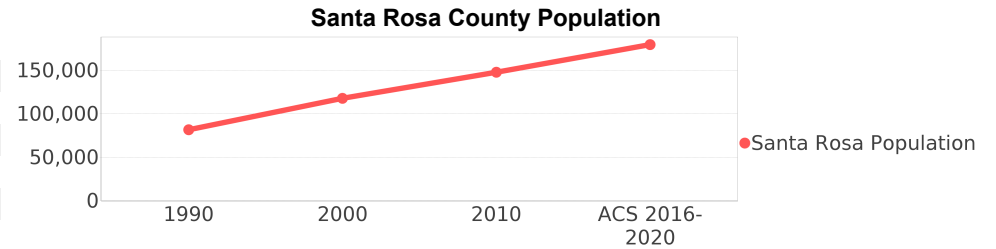
Community Facilities Data

- (16) Assisted Rental Housing Units - Identifies multifamily rental developments that receive funding assistance under federal, state, and local government programs to offer affordable housing as reported by the Shimberg Center for Housing Studies, University of Florida.
- (17) Mobile Home Parks - Identifies approved or acknowledged mobile home parks reported by the Florida Department of Business and Professional Regulation and Florida Department of Health.
- (18) Migrant Camps - Identifies migrant labor camp facilities inspected by the Florida Department of Health.
- (19) Group Care Facilities - Identifies group care facilities inspected by the Florida Department of Health.
- (20) Community Center and Fraternal Association Facilities - Identifies facilities reported by multiple sources.
- (21) Law Enforcement Correctional Facilities - Identifies facilities reported by multiple sources.
- (22) Cultural Centers - Identifies cultural centers including organizations, buildings, or complexes that promote culture and arts (e.g., aquariums and zoological facilities; arboreta and botanical gardens; dinner theaters; drive-ins; historical places and services; libraries; motion picture theaters; museums and art galleries; performing arts centers; performing arts theaters; planetariums; studios and art galleries; and theater producers stage facilities) reported by multiple sources.
- (23) Fire Department and Rescue Station Facilities - Identifies facilities reported by multiple sources.
- (24) Government Buildings - Identifies local, state, and federal government buildings reported by multiple sources.
- (25) Health Care Facilities - Identifies health care facilities including abortion clinics, dialysis clinics, medical doctors, nursing homes, osteopaths, state laboratories/clinics, and surgicenters/walk-in clinics reported by the Florida Department of Health.
- (26) Hospital Facilities - Identifies hospital facilities reported by multiple sources.
- (27) Law Enforcement Facilities - Identifies law enforcement facilities reported by multiple sources.
- (28) Parks and Recreational Facilities - Identifies parks and recreational facilities reported by multiple sources.
- (29) Religious Center Facilities - Identifies religious centers including churches, temples, synagogues, mosques, chapels, centers, and other types of religious facilities reported by multiple sources.
- (30) Private and Public Schools - Identifies private and public schools reported by multiple sources.
- (31) Social Service Centers - Identifies social service centers reported by multiple sources.
- (32) Veteran Organizations and Facilities

Santa Rosa County Demographic Profile

General Population Trends - Santa Rosa

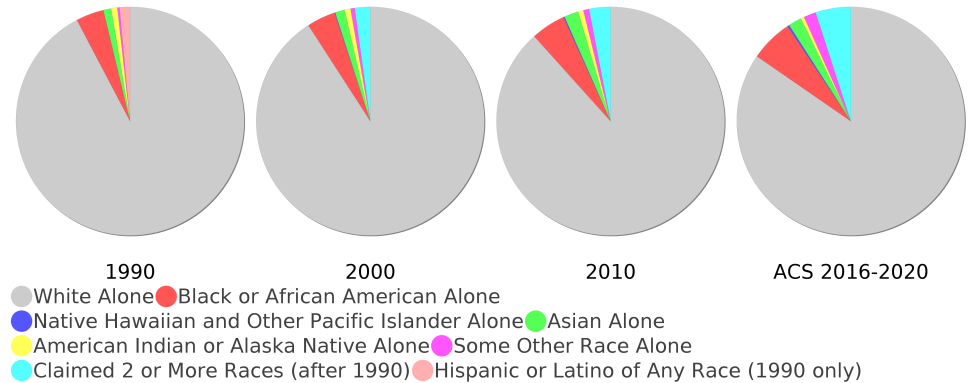
Description	1990	2000	2010 ¹	ACS 2016-2020
Total Population	81,608	117,743	147,838	179,587
Total Households	29,900	43,793	54,860	65,697
Average Persons per Acre	0.125	0.18	0.225	0.27
Average Persons per Household	2.729	2.627	3.00	2.64
Average Persons per Family	3.10	3.05	3.08	3.13
Males	40,644	59,153	74,289	91,656
Females	40,964	58,590	73,549	87,931



Race and Ethnicity Trends - Santa Rosa

Description	1990	2000	2010 ¹	ACS 2016-2020
White Alone	76,385 (93.60%)	106,976 (90.86%)	130,575 (88.32%)	151,935 (84.60%)
Black or African American Alone	3,275 (4.01%)	4,777 (4.06%)	7,229 (4.89%)	10,803 (6.02%)
Native Hawaiian and Other Pacific Islander Alone	(NA)	111 (0.09%)	248 (0.17%)	518 (0.29%)
Asian Alone	911 (1.12%)	1,608 (1.37%)	2,987 (2.02%)	3,360 (1.87%)
American Indian or Alaska Native Alone	715 (0.88%)	1,006 (0.85%)	1,112 (0.75%)	863 (0.48%)
Some Other Race Alone	260 (0.32%)	678 (0.58%)	1,207 (0.82%)	3,122 (1.74%)
Claimed 2 or More Races	(NA)	2,587 (2.20%)	4,480 (3.03%)	8,986 (5.00%)
Hispanic or Latino of Any Race	1,223 (1.50%)	2,821 (2.40%)	6,061 (4.10%)	10,333 (5.75%)
Not Hispanic or Latino	80,385 (98.50%)	114,922 (97.60%)	141,777 (95.90%)	169,254 (94.25%)
Minority	6,089 (7.46%)	12,727 (10.81%)	22,646 (15.32%)	32,884 (18.31%)

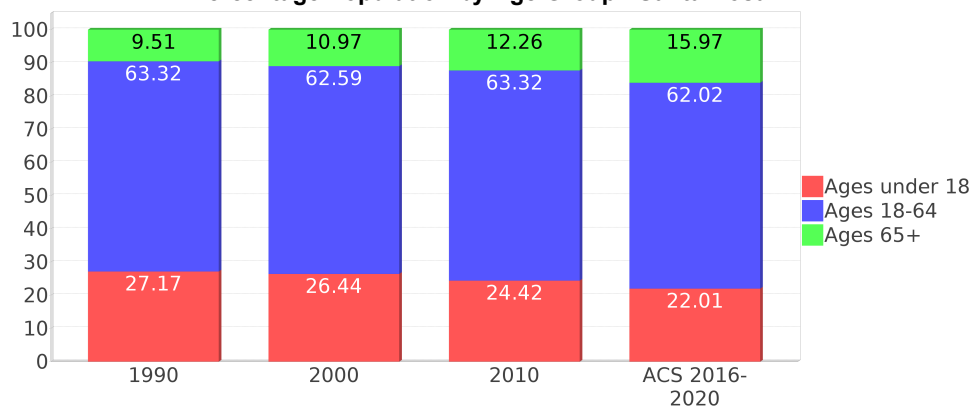
Santa Rosa County Race



Age Trends - Santa Rosa

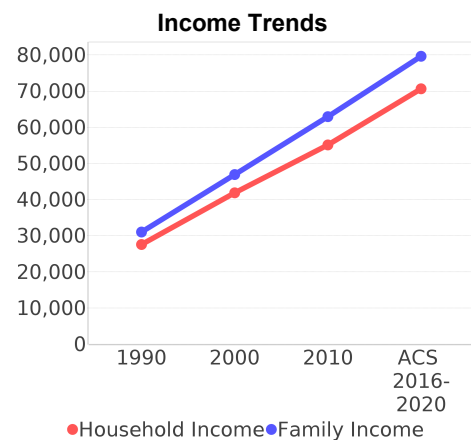
Description	1990	2000	2010 ¹	ACS 2016-2020
Under Age 5	7.81%	6.60%	6.10%	5.65%
Ages 5-17	19.36%	19.84%	18.33%	16.36%
Ages 18-21	5.14%	4.21%	4.87%	4.22%
Ages 22-29	13.13%	8.99%	9.59%	10.37%
Ages 30-39	17.23%	16.69%	13.25%	13.37%
Ages 40-49	13.57%	16.20%	16.25%	13.16%
Ages 50-64	14.26%	16.51%	19.37%	20.90%
Age 65 and Over	9.51%	10.97%	12.26%	15.97%
-Ages 65-74	6.14%	7.04%	7.61%	9.82%
-Ages 75-84	2.68%	2.98%	3.78%	4.62%
-Age 85 and Over	0.69%	0.96%	0.87%	1.52%
Median Age	NA	37	39	40

Percentage Population by Age Group - Santa Rosa

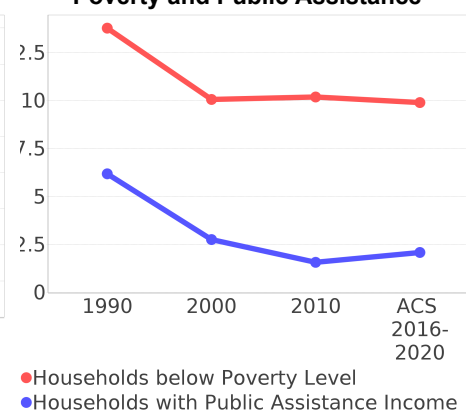


Income Trends - Santa Rosa

Description	1990	2000	2010 ¹	ACS 2016-2020
Median Household Income	\$27,584	\$41,881	\$55,129	\$70,663
Median Family Income	\$31,033	\$46,929	\$62,929	\$79,646
Population below Poverty Level	14.16%	9.83%	11.35%	10.00%
Households below Poverty Level	13.78%	10.06%	10.19%	9.90%
Households with Public Assistance Income	6.19%	2.76%	1.57%	2.09%



Poverty and Public Assistance



Disability Trends - Santa Rosa

See the Data Sources section below for an explanation about the differences in disability data among the various years.

Description	1990	2000	2010 ¹	ACS 2016-2020
Population 16 To 64 Years with a disability	5,795 (9.92%)	15,251 (14.56%)	NA (NA)	NA (NA)
Population 20 To 64 Years with a disability	NA (NA)	NA (NA)	NA (NA)	13,655 (13.39%)

Educational Attainment Trends - Santa Rosa

Age 25 and Over

Description	1990	2000	2010 ¹	ACS 2016-2020
Less than 9th Grade	3,996 (7.70%)	3,120 (3.99%)	3,238 (3.26%)	2,645 (2.10%)
9th to 12th Grade, No Diploma	7,186 (13.84%)	8,265 (10.57%)	8,338 (8.38%)	8,074 (6.41%)
High School Graduate or Higher	40,740 (78.46%)	66,781 (85.43%)	87,874 (88.36%)	115,322 (91.50%)
Bachelor's Degree or Higher	9,653 (18.59%)	17,881 (22.88%)	24,610 (24.75%)	34,361 (27.26%)

Language Trends - Santa Rosa

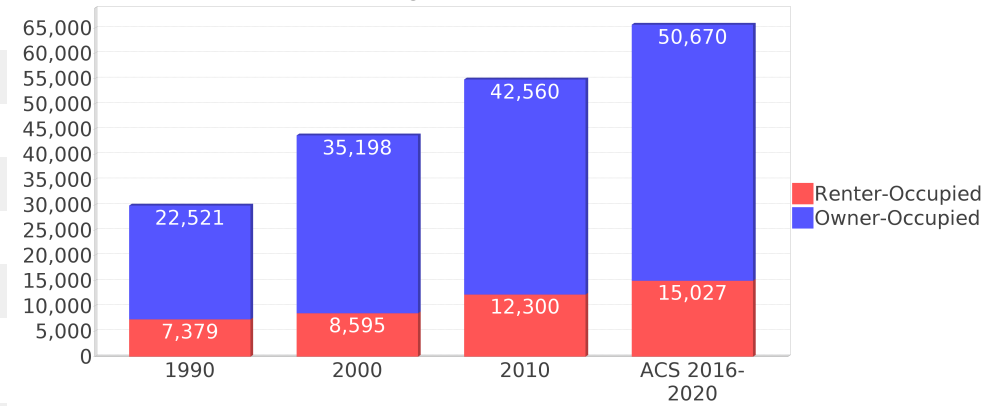
Age 5 and Over

Description	1990	2000	2010 ¹	ACS 2016-2020
Speaks English Well	581 (0.77%)	1,062 (0.97%)	1,968 (1.42%)	1,867 (1.10%)
Speaks English Not Well	NA (NA)	550 (0.50%)	1,018 (0.73%)	1,190 (0.70%)
Speaks English Not at All	NA (NA)	57 (0.05%)	260 (0.19%)	67 (0.04%)
Speaks English Not Well or Not at All	325 (0.43%)	607 (0.55%)	1,278 (0.92%)	1,257 (0.74%)
Speaks English Less than Very Well	NA (NA)	1,669 (1.52%)	3,246 (2.34%)	3,124 (1.84%)

Housing Trends - Santa Rosa

Description	1990	2000	2010 ¹	ACS 2016-2020
Total	32,831	49,119	63,059	73,023
Units per Acre	0.05	0.075	0.096	0.11
Single-Family Units	21,487	35,967	48,174	59,212
Multi-Family Units	2,620	4,510	6,631	6,464
Mobile Home Units	5,639	8,586	8,105	7,273
Owner-Occupied Units	22,521	35,198	42,560	50,670
Renter-Occupied Units	7,379	8,595	12,300	15,027
Vacant Units	2,931	5,326	8,199	7,326
Median Housing Value	\$65,700	\$96,300	\$182,300	\$214,900
Occupied Housing Units w/No Vehicle	1,439 (4.81%)	1,553 (3.55%)	1,783 (3.25%)	2,000 (3.04%)
Median year householder moved into unit - Total	NA	NA	NA	2012
Median year householder moved into unit - Owner Occupied	NA	NA	NA	2009
Median year householder moved into unit - Renter Occupied	NA	NA	NA	2016
Abroad 1 year ago	NA	NA	NA	936
Different house in United States 1 year ago	NA	NA	NA	27,555
Same house 1 year ago	NA	NA	NA	148,943
Geographical Mobility in the Past Year - Total	NA	NA	NA	148,943

Housing Tenure - Santa Rosa



County Data Sources

ACS vs Census Data

(1) The 2010 Census data is represented by a combination of decennial and ACS (2006-2010) data. The General Population Trends, Race and Ethnicity Trends, Age Trends are entirely from decennial. The Income Trends, Language Trends are entirely from the ACS. The Housing Trends section is derived from both: Decennial (Total # Housing Units, Housing Units per Acre, Owner-Occupied Units, Renter-Occupied Units, Vacant Units); ACS (Single Family Units, Multi-family Units, Mobile Homes, Median Housing Value, Occupied Housing Units w/No Vehicle).

About the Census Data

(34) Use caution when comparing the 100% count data (Decennial Census) to the sample-based data (ACS). In any given year, about one in 40 U.S. households will receive the ACS questionnaire. Over any five-year period, about one in eight households will receive the questionnaire, as compared to about one in six that received the long form questionnaire for the Decennial Census 2000. (Source: https://www.census.gov/content/dam/Census/programs-surveys/acs/news/10ACS_keyfacts.pdf) The U.S. Census Bureau provides help with this process: <https://www.census.gov/programs-surveys/acs/guidance/comparing-acs-data.html>

(35) Use caution when interpreting changes in race and ethnicity over time. Starting with the 2000 Decennial Census, respondents were given a new option of selecting one or more race categories. Also in 2000, the placement of the question about Hispanic origin changed, helping to increase responsiveness to the Hispanic-origin question. Because of these and other changes, the 1990 data on race and ethnicity are not directly comparable with data from later censuses. (Source: <http://www.census.gov/prod/2001pubs/c2kbr01-1.pdf>; [http://www.census.gov/pred/www/rpts/Race and Ethnicity FINAL report.pdf](http://www.census.gov/pred/www/rpts/Race%20and%20Ethnicity%20FINAL%20report.pdf))

(36) The "Minority" calculations are derived from Census and ACS data using both the race and ethnicity responses. On this report, "Minority" refers to individuals who list a race other than White and/or list their ethnicity as Hispanic/Latino. In other words, people who are multi-racial, any single race other than White, or Hispanic/Latino of any race are considered minorities.

(37) Disability data is not included in the 2010 Decennial Census or the 2006-2010 ACS. This data is available in the ACS 2016-2020 ACS. Because of changes made to the Census and ACS questions between 1990 and ACS, disability variables should not be compared from year to year. For example: 1) with the 1990 data, the disabilities are listed as a "work disability" while this distinction is not made with 2000 or ACS data; 2) the ACS data includes the institutionalized population (e.g. persons in prisons and group homes) while this population is not included in 1990 or 2000; and 3) the age groupings changed over the years.

(38) The category Bachelor's Degree or Higher under the heading Educational Attainment Trends is a subset of the category High School Graduate or Higher.

Metadata

- (39) Community and Fraternal Centers https://etdmpub.florida-estat.org/meta/gc_communitycenter.xml
- (40) Correctional Facilities in Florida https://etdmpub.florida-estat.org/meta/gc_correctional.xml
- (41) Cultural Centers in Florida https://etdmpub.florida-estat.org/meta/gc_culturecenter.xml
- (42) Fire Department and Rescue Station Facilities in Florida https://etdmpub.florida-estat.org/meta/gc_firestat.xml
- (43) Local, State, and Federal Government Buildings in Florida https://etdmpub.florida-estat.org/meta/gc_govbuild.xml
- (44) Florida Health Care Facilities https://etdmpub.florida-estat.org/meta/gc_health.xml
- (45) Hospital Facilities in Florida https://etdmpub.florida-estat.org/meta/gc_hospitals.xml
- (46) Law Enforcement Facilities in Florida https://etdmpub.florida-estat.org/meta/gc_lawenforce.xml
- (47) Florida Parks and Recreational Facilities https://etdmpub.florida-estat.org/meta/gc_parks.xml
- (48) Religious Centers https://etdmpub.florida-estat.org/meta/gc_religion.xml
- (49) Florida Public and Private Schools https://etdmpub.florida-estat.org/meta/gc_schools.xml
- (50) Social Service Centers https://etdmpub.florida-estat.org/meta/gc_socialservice.xml
- (51) Assisted Rental Housing Units in Florida https://etdmpub.florida-estat.org/meta/gc_assisted_housing.xml
- (52) Group Care Facilities <https://etdmpub.florida-estat.org/meta/groupcare.xml>
- (53) Mobile Home Parks in Florida https://etdmpub.florida-estat.org/meta/gc_mobilehomes.xml
- (54) Migrant Camps in Florida <https://etdmpub.florida-estat.org/meta/migrant.xml>
- (55) Veteran Organizations and Facilities https://etdmpub.florida-estat.org/meta/gc_veterans.xml
- (56) Generalized Land Use https://etdmpub.florida-estat.org/meta/lu_gen.xml
- (57) Census Block Groups in Florida https://etdmpub.florida-estat.org/meta/e2_cenacs_cci.xml
- (58) 1990 Census Block Groups in Florida https://etdmpub.florida-estat.org/meta/e2_cenblkgrp_1990_cci.xml
- (59) 2000 Census Block Groups in Florida https://etdmpub.florida-estat.org/meta/e2_cenblkgrp_2000_cci.xml
- (60) 2010 Census Block Groups in Florida https://etdmpub.florida-estat.org/meta/e2_cenblkgrp_2010_cci.xml