

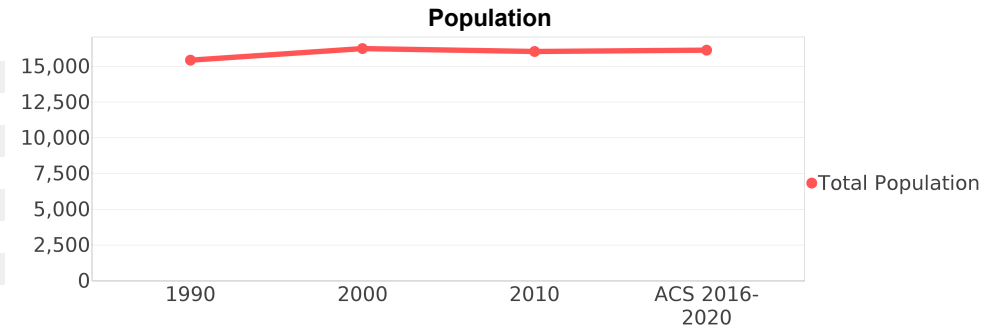
## Pinewood (CDP)

**Area:** 1.891 square miles  
**Jurisdiction - Cities:** NA  
**Jurisdiction - Counties:** Miami-Dade



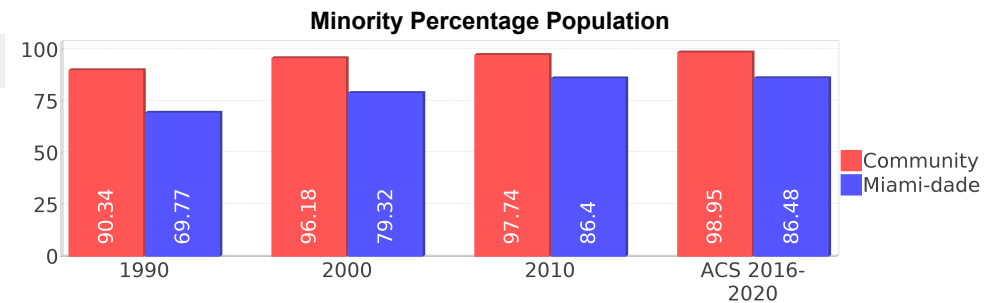
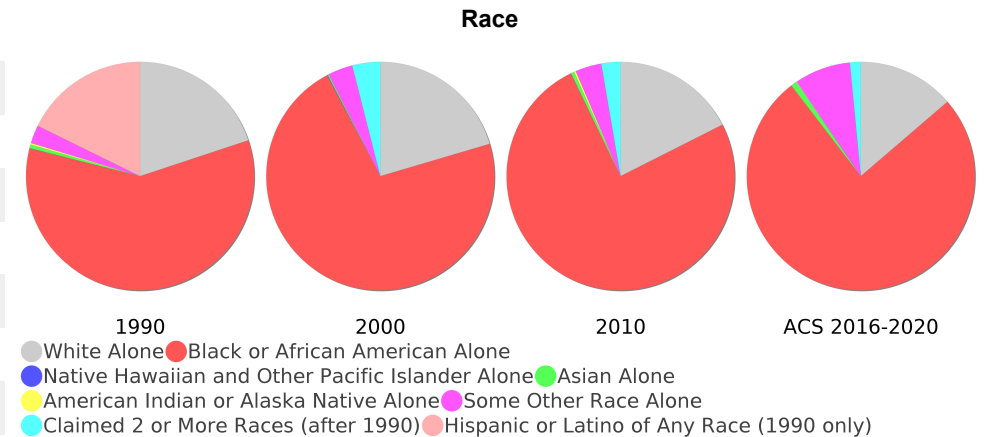
## General Population Trends

Description	1990	2000	2010 <sup>1</sup>	ACS 2016-2020
Total Population	15,430	16,247	16,039	16,132
Total Households	4,869	4,918	4,919	4,750
Average Persons per Acre	14.10	14.47	15.38	15.14
Average Persons per Household	3.44	3.40	3.48	3.70
Average Persons per Family	4.02	3.96	3.88	4.35
Males	7,406	7,744	7,729	8,067
Females	8,024	8,502	8,309	8,064



## Race and Ethnicity Trends

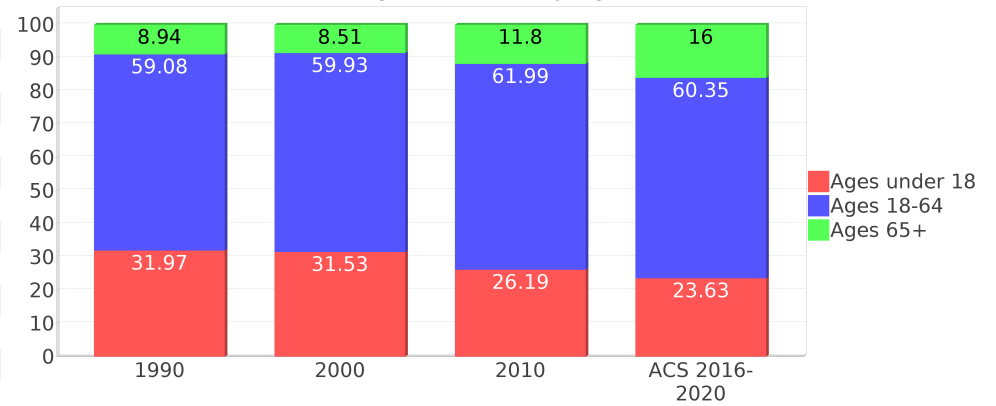
Description	1990	2000	2010 <sup>1</sup>	ACS 2016-2020
White Alone	3,737 (24.22%)	3,319 (20.43%)	2,818 (17.57%)	2,211 (13.71%)
Black or African American Alone	11,066 (71.72%)	11,669 (71.82%)	12,062 (75.20%)	12,236 (75.85%)
Native Hawaiian and Other Pacific Islander Alone	7 (0.05%)	15 (0.09%)	8 (0.05%)	0 (0.00%)
Asian Alone	94 (0.61%)	28 (0.17%)	77 (0.48%)	137 (0.85%)
American Indian or Alaska Native Alone	41 (0.27%)	0 (0.00%)	40 (0.25%)	11 (0.07%)
Some Other Race Alone	484 (3.14%)	569 (3.50%)	597 (3.72%)	1,285 (7.97%)
Claimed 2 or More Races	NA (NA)	646 (3.98%)	435 (2.71%)	249 (1.54%)
Hispanic or Latino of Any Race	3,327 (21.56%)	3,613 (22.24%)	3,672 (22.89%)	3,825 (23.71%)
Not Hispanic or Latino	12,103 (78.44%)	12,634 (77.76%)	12,367 (77.11%)	12,307 (76.29%)
Minority	13,940 (90.34%)	15,626 (96.18%)	15,677 (97.74%)	15,963 (98.95%)



## Age Trends

Description	1990	2000	2010 <sup>1</sup>	ACS 2016-2020
Under Age 5	9.51%	7.78%	7.48%	7.16%
Ages 5-17	22.46%	23.75%	18.72%	16.47%
Ages 18-21	5.90%	7.35%	6.93%	4.03%
Ages 22-29	12.02%	11.26%	12.53%	9.30%
Ages 30-39	17.03%	12.83%	11.65%	13.79%
Ages 40-49	12.32%	14.19%	12.77%	13.97%
Ages 50-64	11.82%	14.30%	18.11%	19.27%
Age 65 and Over	8.94%	8.51%	11.80%	16.00%
-Ages 65-74	5.24%	5.62%	6.97%	10.48%
-Ages 75-84	2.90%	1.96%	3.55%	4.28%
-Age 85 and Over	0.79%	0.93%	1.28%	1.23%
Median Age	NA	30	33	36

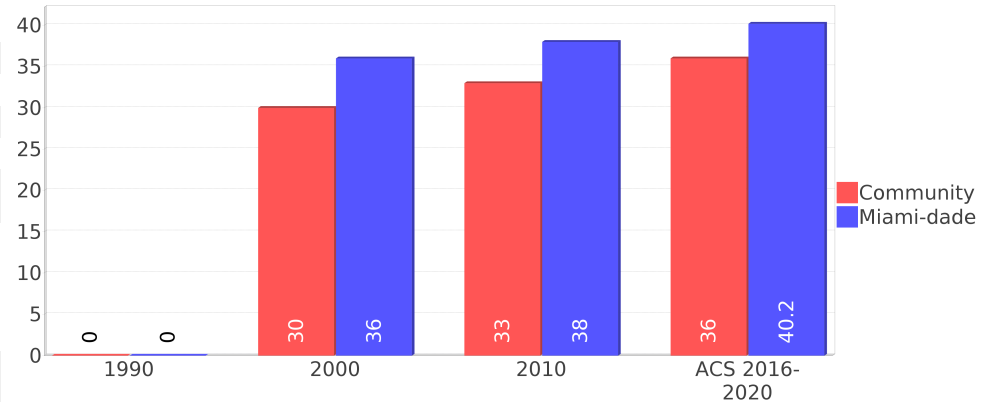
Percentage Population by Age Group



## Income Trends

Description	1990	2000	2010 <sup>1</sup>	ACS 2016-2020
Median Household Income	\$23,312	\$26,607	\$31,917	\$45,710
Median Family Income	\$23,655	\$28,558	\$32,422	\$45,386
Population below Poverty Level	25.90%	32.97%	34.92%	20.40%
Households below Poverty Level	27.05%	30.50%	33.65%	22.78%
Households with Public Assistance Income	15.26%	10.33%	2.79%	3.37%

Median Age Comparison



## Disability Trends

See the Data Sources section below for an explanation about the differences in disability data among the various years.

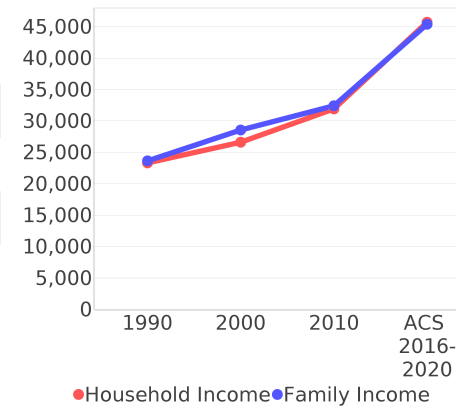
Description	1990	2000	2010 <sup>1</sup>	ACS 2016-2020
Population 16 To 64 Years with a disability	747 (6.85%)	2970 (20.10%)	(NA)	(NA)
Population 20 To 64 Years with a disability	(NA)	(NA)	(NA)	836 (8.90%)

## Educational Attainment Trends

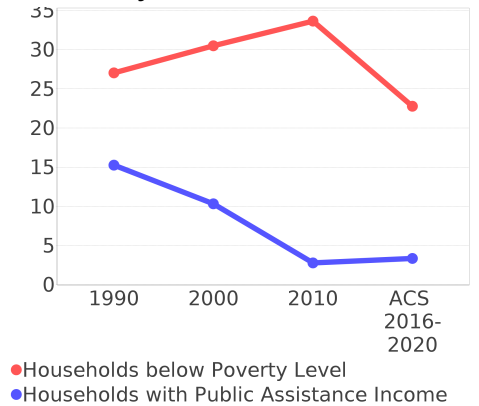
Age 25 and Over

Description	1990	2000	2010 <sup>1</sup>	ACS 2016-2020
Less than 9th Grade	2,078 (22.89%)	1,720 (18.77%)	1,681 (17.72%)	1,509 (13.59%)
9th to 12th Grade, No Diploma	2,566 (28.26%)	2,867 (31.29%)	1,412 (14.88%)	1,281 (11.53%)
High School Graduate or Higher	4,434 (48.84%)	4,576 (49.93%)	6,395 (67.39%)	8,316 (74.87%)
Bachelor's Degree or Higher	746 (8.22%)	545 (5.95%)	830 (8.75%)	1,509 (13.59%)

Income Trends



Poverty and Public Assistance



## Language Trends

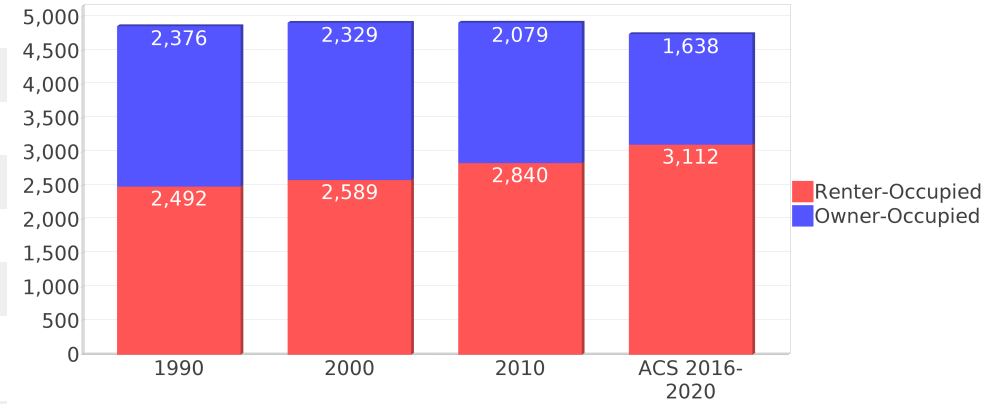
Age 5 and Over

Description	1990	2000	2010 <sup>1</sup>	ACS 2016-2020
Speaks English Well	1,870 (13.32%)	1,735 (11.58%)	1,619 (11.31%)	1,273 (8.50%)
Speaks English Not Well	NA (NA)	1,687 (11.26%)	1,667 (11.64%)	2,351 (15.70%)
Speaks English Not at All	NA (NA)	624 (4.16%)	856 (5.98%)	549 (3.67%)
Speaks English Not Well or Not at All	1,902 (13.55%)	2,311 (15.43%)	2,523 (17.62%)	2,900 (19.36%)
Speaks English Less than Very Well	NA (NA)	4,047 (27.01%)	4,143 (28.93%)	4,174 (27.87%)

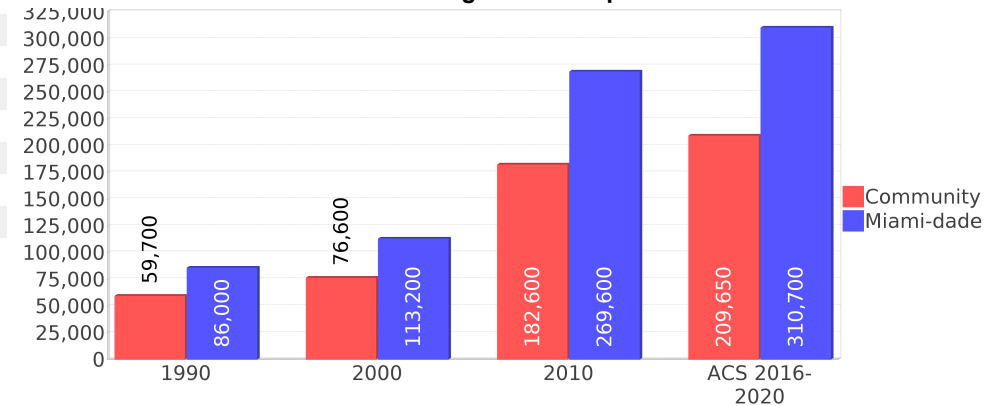
## Housing Trends

Description	1990	2000	2010 <sup>1</sup>	ACS 2016-2020
Total	5,297	5,188	5,330	5,223
Units per Acre	5.22	5.08	5.16	4.78
Single-Family Units	2,711	2,814	2,439	3,191
Multi-Family Units	1,680	2,005	2,611	2,015
Mobile Home Units	332	368	361	17
Owner-Occupied Units	2,376	2,329	2,079	1,638
Renter-Occupied Units	2,492	2,589	2,840	3,112
Vacant Units	428	270	410	473
Median Housing Value	\$59,700	\$76,600	\$182,600	\$209,650
Occupied Housing Units w/No Vehicle	804 (16.51%)	1,001 (20.35%)	953 (19.37%)	764 (16.08%)

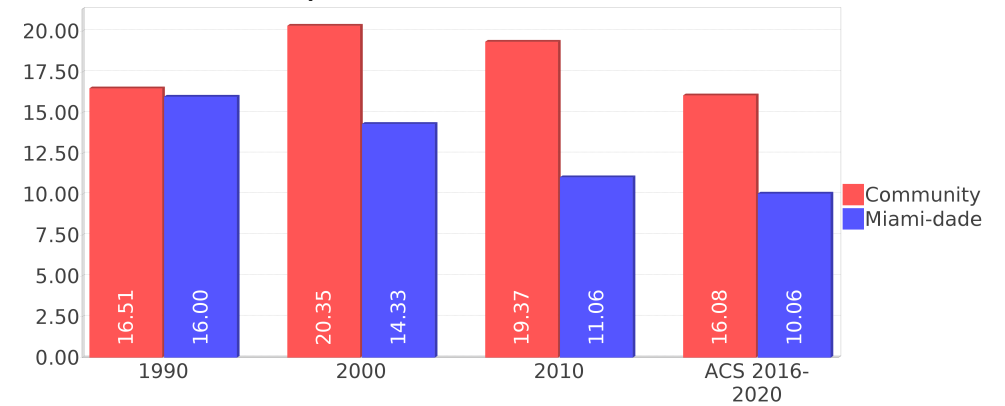
## Housing Tenure



## Median Housing Value Comparison



## Occupied Units With No Vehicles Available



## Geographic Mobility

Description	ACS 2016-2020
Median year householder moved into unit - Total	2007
Median year householder moved into unit - Owner Occupied	1996
Median year householder moved into unit - Renter Occupied	2014
Abroad 1 year ago	89
Different house in United States 1 year ago	2,327
Same house 1 year ago	13,454
Geographical Mobility in the Past Year - Total	15,871

## Computers and Internet

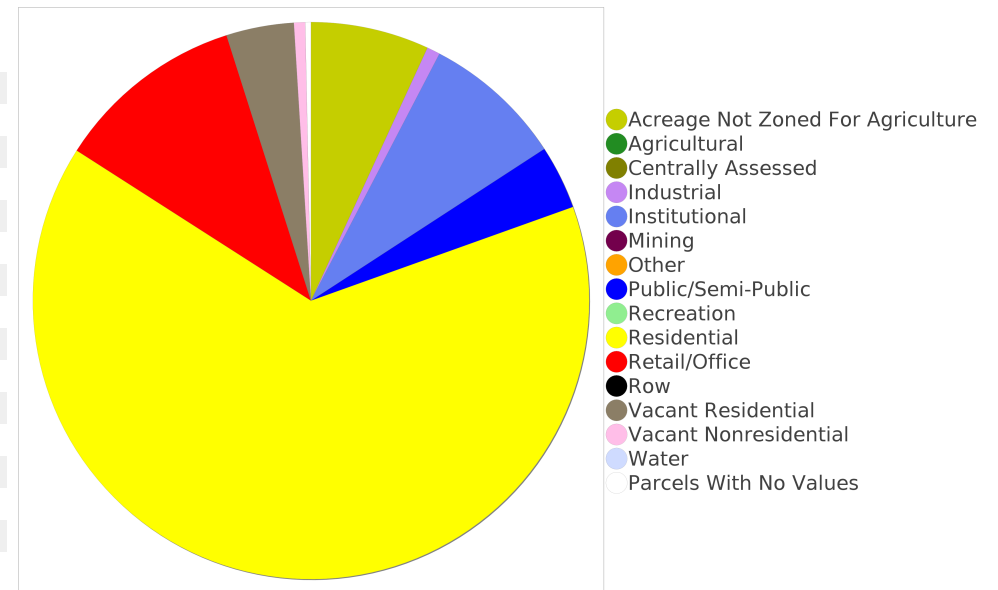
Description	ACS 2016-2020
Total Households Types of Computers in HH	4,750
Households with 1 or more device	4,193
Households with no computer	557
Total Households Presence and Types of Internet Subscriptions	4,750
Households with an internet subscription	3,032
Households with internet access without a subscription	259
Households with no internet access	1,458

## Household Languages

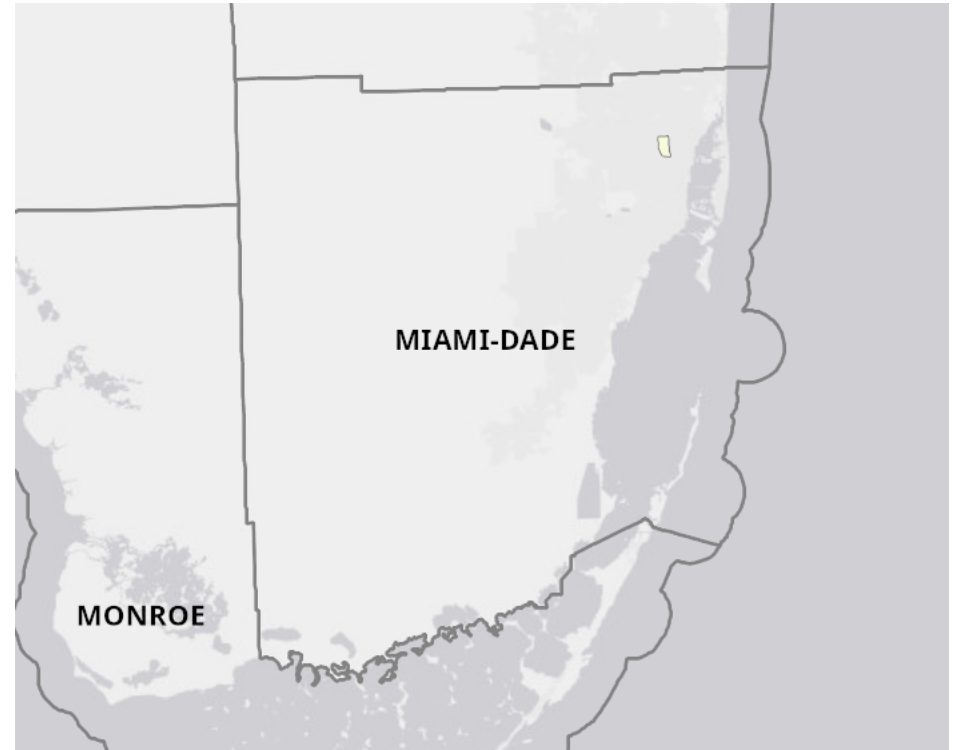
Description	ACS 2016-2020
Total Households by Household Language	4,750
Household Not Limited English Speaking Status	3,717
Spanish: Limited English speaking household	492
Indo-European languages: Limited English speaking household	511
Asian and Pacific Island languages: Limited English speaking household	29
Other languages: Limited English speaking household	0

## Existing Land Use

Land Use Type	Acres	Percentage
Acreage Not Zoned For Agriculture	63	5.21%
Agricultural	0	0.00%
Centrally Assessed	0	0.00%
Industrial	7	0.58%
Institutional	75	6.20%
Mining	0	0.00%
Other	0	0.00%
Public/Semi-Public	34	2.81%
Recreation	0	0.00%
Residential	591	48.84%
Retail/Office	101	8.35%
Row	0	0.00%
Vacant Residential	36	2.97%
Vacant Nonresidential	6	0.50%
Water	0	0.00%
Parcels With No Values	3	0.25%



## Location Maps



## Community Facilities

The community facilities information below is useful in a variety of ways for environmental evaluations. These community resources should be evaluated for potential sociocultural effects, such as accessibility and relocation potential. The facility types may indicate the types of population groups present in the project study area. Facility staff and leaders can be sources of community information such as who uses the facility and how it is used. Additionally, community facilities are potential public meeting venues.

### Assisted Rental Housing Units

Facility Name	Address	Zip Code
ALHAMBRA COVE APARTMENTS	1600 NW 119TH STREET	33167

### Community and Fraternal Centers

Facility Name	Address	Zip Code
PALM TOWERS CENTER	950 NW 95 ST	33150
BOYS & GIRLS CLUB - MIAMI	10915 NW 14TH AVE	33167
M W CYPRESS GRAND LODGE	11785 NW 17TH AVE	33167

### Hospital Facilities

Facility Name	Address	Zip Code
NORTH SHORE MEDICAL CENTER	1100 NW 95TH ST	33150

### Law Enforcement Facilities

Facility Name	Address	Zip Code
US DEPARTMENT OF HOMELAND SECURITY - USCIS MIAMI FIELD OFFICE	8801 NW 7TH AVE	33150

### Florida Parks and Recreational Facilities

Facility Name	Address	Zip Code
MIAMI SHORES OPTIMIST CLUB	10915 NW 14TH AVE	33167
GRATIGNY PLATEAU PARK	885 NW 117TH ST	33168
TWIN LAKES PARK	NW 99TH ST & NW 12TH AVE	33147

### Religious Centers

Facility Name	Address	Zip Code
SILVER BLUE LAKES MISSIONARY	1448 NW 103RD STREET	33147
NEW JERUSALEM CHURCH OF GOD	795 NW 111TH STREET	33168
IGLESIA DE DIOS PUERTA DE	11440 NW 7TH AVENUE	33168
NEW SHILOH MISSIONARY BAPTIST CHURCH	1350 NW 95TH STREET	33147
FAITH DELIVERANCE CATHEDRAL	1180 NW 99TH STREET # 1	33150
EGLISE EVANGELIQUE BAPTISTE	1000 NW 111TH STREET	33168
EMMAUS BAPTIST MISSION CHURCH	840 NW 100 ST	33150
ARCH CHRISTIAN CHURCH	1400 NW 111TH STREET	33167
HAITIAN ALLIANCE CHURCH	777 NORTHWEST 106TH STREET	33150
THE WAY OF HOLINESS OUTREACH MINISTRY	10600 NORTHWEST 7TH AVENUE	33150
EGLISE BAPTISTE ADONAI	1299 NW 111TH STREET	33167
MARANATHA BETHANY BAPTIST CHURCH	10640 NW 12TH AVENUE	33150
TEMPLE DE L'ETERNEL	10836 NW 7TH AVENUE	33168
FAITHFUL DELIVERANCE TEMPLE	769 NW 111TH STREET	33168
CENTRAL CHURCH OF THE NAZARENE	1300 NW 95TH STREET	33147
LAKEVIEW UNITED METHODIST	11500 NORTHWEST 12TH AVENUE	33168
FAITH COMMUNITY BAPTIST CHURCH	10401 NW 8TH AVENUE	33150
MT OLIVE CHURCH OF GOD	11648 NW 7TH AVENUE	33168
NORTH DADE ASSEMBLY CHRISTIAN	11111 NW 17TH AVENUE	33167
TRUE VINE CHURCH OF JESUS CHRIST	778 NW 95TH TERR	33150
JEUNE JESUS MIRACLE CHURCH	11250 NW 7TH AVE	33168
ALLEN CHAPEL AME CHURCH	1201 NW 111TH STREET	33167
UNITY PENTECOSTAL CHURCH OF GOD	801 NW 111TH ST	33168
TABERNACLE PENTECOSTAL ELIM	10210 NW 7TH AVENUE	33150
NEW VISION OUTREACH MINISTRIES	9900 NW 7TH AVENUE	33150

## Public Schools

Facility Name	Address	Zip Code
LAKEVIEW ELEMENTARY SCHOOL	1290 NW 115TH ST	33167
VAN E. BLANTON ELEMENTARY SCHOOL	10327 NW 11TH AVE	33150

## Mobile Home Parks

Facility Name	Address	Zip Code
COLONIAL ACRES MOBILE HOME COMMUNITY	9674 NW 10TH AVE	33150

## Group Care Facilities

Facility Name	Address	Zip Code
U.C.P. - EARLY BEGININGS ACADEMY, NORTH SHORE	985 NW 91 STREET	33150
VIDA NUEVA NO.1	745 NW 102ND STREET	33150
LAKEVIEW ELEM. SCHOOL	1290 NW 115 STREET	33167
BRIGHT FUTURE SCHOOL OF EXCELLENCE, INC.	10401 NW 8 AVENUE	33150
VAN E. BLANTON ELEM.	10327 NW 11 AVENUE	33150
GOOD SAMARITAN HOME II, LLC	1100 NW 104 STREET	33150
HARBOR VILLAGE INC.	9198 NW 8 AVENUE	33150

## Block Groups

The following Census Block Groups were used to calculate demographics for this report.

### 1990 Census Block Groups

120250011033, 120250004063, 120250004073, 120250004065, 120250004066, 120250004062, 120250004074, 120250010015, 120250011024, 120250011013, 120250004071, 120250004064, 120250003045, 120250004082, 120250004072, 120250004081

### 2000 Census Block Groups

120860004073, 120860010051, 120860004074, 120860004081, 120860004066, 120860004064, 120860004063, 120860004072, 120860004071, 120860004082, 120860010021, 120860004065, 120860004062

### 2010 Census Block Groups

120860004124, 120860004093, 120860004092, 120860004082, 120860004081, 120860004103, 120860004111, 120860004112, 120860004084, 120860004091, 120860004113, 120860010051

### Census Block Groups

120860004113, 120860004093, 120860004091, 120860004111, 120860004084, 120860004152, 120860004082, 120860010051, 120860004151, 120860004092, 120860004103, 120860004114, 120860004081, 120860004112

## Data Sources

### ACS vs Census Data

(1) The 2010 Census data is represented by a combination of decennial and ACS (2006-2010) data. The General Population Trends, Race and Ethnicity Trends, Age Trends are entirely from decennial. The Income Trends, Language Trends are entirely from the ACS. The Housing Trends section is derived from both: Decennial (Total # Housing Units, Housing Units per Acre, Owner-Occupied Units, Renter-Occupied Units, Vacant Units); ACS (Single Family Units, Multi-family Units, Mobile Homes, Median Housing Value, Occupied Housing Units w/No Vehicle).

### Area

(2) The geographic area of the community based on a user-defined community boundary or area of interest (AOI) boundary.

### Jurisdiction

(3) Jurisdiction(s) includes local government boundaries that intersect the user-defined community or AOI boundary.

### Goals, Values and History

(4) Information under the headings Goals and Values and History is entered manually by the user before the Sociocultural Data Report (SDR) is generated. This information is usually not available for communities with boundaries that are based on Census-defined places (i.e., not user-specified).

### Demographic Data

(5) Demographic data reported under the headings General Population Trends, Race and Ethnicity Trends, Age Trends, Income Trends, Educational Attainment Trends, Language Trends, and Housing Trends is from the U.S. Decennial Census for 1990 and 2000 and the American Community Survey (ACS) 5-year estimates for 2006-2010 and ACS 2016-2020. The data was gathered at the block group level for user-defined communities, Census places, and AOIs, and at the county level for counties. Depending on the dataset, the data represents 100% counts (Census Summary File 1) or sample-based information (Census Summary File 3 or ACS).

### About the Census Data

(6) The block group analysis for ETDM project analysis areas, user-defined communities, Census places, and AOI boundaries do not always correspond precisely to block group boundaries. To estimate the actual population more accurately, the SDR analysis adjusts the geographic area and data of affected block groups using the following methodology:

Delete overlapping census blocks with extremely low populations (2 or fewer people)  
Remove the portion of the block group that lies outside of the analysis area  
Recalculate the demographics assuming an equal area distribution of the population

Note that there may be areas where there is no population.

(7) Use caution when comparing the 100% count data (Decennial Census) to the sample-based data (ACS). In any given year, about one in 40 U.S. households will receive the ACS questionnaire. Over any five-year period, about one in eight households will receive the questionnaire, as compared to about one in six that received the long form questionnaire for the Decennial Census 2000. (Source: [https://www.census.gov/content/dam/Census/programs-surveys/acs/news/10ACS\\_keyfacts.pdf](https://www.census.gov/content/dam/Census/programs-surveys/acs/news/10ACS_keyfacts.pdf)) The U.S. Census Bureau provides help with this process: <https://www.census.gov/programs-surveys/acs/guidance/comparing-acs-data.html>

(8) Use caution when interpreting changes in race and ethnicity over time. Starting with the 2000 Decennial Census, respondents were given a new option of selecting one or more race categories. Also in 2000, the placement of the question about Hispanic origin changed, helping to increase responsiveness to the Hispanic-origin question. Because of these and other changes, the 1990 data on race and ethnicity are not directly comparable with data from later censuses. (Source: <http://www.census.gov/prod/2001pubs/c2kbr01-1.pdf>; <http://www.census.gov/pred/www/rpts/Race and Ethnicity FINAL report.pdf>)

(9) The "Minority" calculations are derived from Census and ACS data using both the race and ethnicity responses. On this report, "Minority" refers to individuals who list a race other than White and/or list their ethnicity as Hispanic/Latino. In other words, people who are multi-racial, any single race other than White, or Hispanic/Latino of any race are considered minorities.

(10) Disability data is not included in the 2010 Decennial Census or the 2006-2010 ACS. This data is available in the ACS 2016-2020 ACS. Because of changes made to the Census and ACS questions between 1990 and ACS, disability variables should not be compared from year to year. For example: 1) with the 1990 data, the disabilities are listed as a "work disability" while this distinction is not made with 2000 or ACS data; 2) the ACS data includes the institutionalized population (e.g. persons in prisons and group homes) while this population is not included in 1990 or 2000; and 3) the age groupings changed over the years.

(11) The category Bachelor's Degree or Higher under the heading Educational Attainment Trends is a subset of the category High School Graduate or Higher.

(12) Income of households. This includes the income of the householder and all other individuals 15 years old and over in the household, whether they are related to the householder or not. Because many households consist of only one person, average household income is usually less than average family income.

(13) Income of families. In compiling statistics on family income, the incomes of all members 15 years old and over related to the householder are summed and treated as a single amount.

(14) Age trends. The median age for 1990 is not available.

## Land Use Data

(15) The Land Use information indicates acreages and percentages for the generalized land use types used to group parcel-specific, existing land use assigned by the county property appraiser office according to the Florida Department of Revenue land use codes.

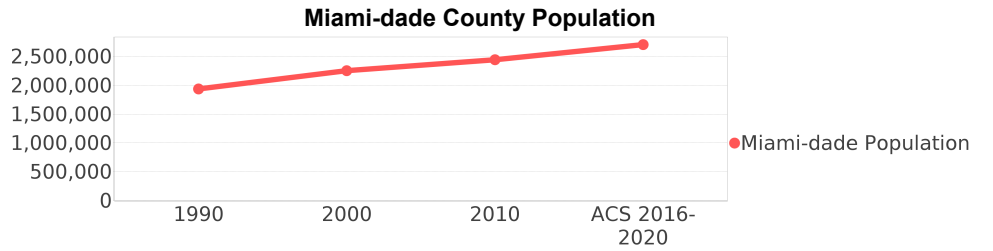
## Community Facilities Data

- (16) Assisted Rental Housing Units - Identifies multifamily rental developments that receive funding assistance under federal, state, and local government programs to offer affordable housing as reported by the Shimberg Center for Housing Studies, University of Florida.
- (17) Mobile Home Parks - Identifies approved or acknowledged mobile home parks reported by the Florida Department of Business and Professional Regulation and Florida Department of Health.
- (18) Migrant Camps - Identifies migrant labor camp facilities inspected by the Florida Department of Health.
- (19) Group Care Facilities - Identifies group care facilities inspected by the Florida Department of Health.
- (20) Community Center and Fraternal Association Facilities - Identifies facilities reported by multiple sources.
- (21) Law Enforcement Correctional Facilities - Identifies facilities reported by multiple sources.
- (22) Cultural Centers - Identifies cultural centers including organizations, buildings, or complexes that promote culture and arts (e.g., aquariums and zoological facilities; arboreta and botanical gardens; dinner theaters; drive-ins; historical places and services; libraries; motion picture theaters; museums and art galleries; performing arts centers; performing arts theaters; planetariums; studios and art galleries; and theater producers stage facilities) reported by multiple sources.
- (23) Fire Department and Rescue Station Facilities - Identifies facilities reported by multiple sources.
- (24) Government Buildings - Identifies local, state, and federal government buildings reported by multiple sources.
- (25) Health Care Facilities - Identifies health care facilities including abortion clinics, dialysis clinics, medical doctors, nursing homes, osteopaths, state laboratories/clinics, and surgicenters/walk-in clinics reported by the Florida Department of Health.
- (26) Hospital Facilities - Identifies hospital facilities reported by multiple sources.
- (27) Law Enforcement Facilities - Identifies law enforcement facilities reported by multiple sources.
- (28) Parks and Recreational Facilities - Identifies parks and recreational facilities reported by multiple sources.
- (29) Religious Center Facilities - Identifies religious centers including churches, temples, synagogues, mosques, chapels, centers, and other types of religious facilities reported by multiple sources.
- (30) Private and Public Schools - Identifies private and public schools reported by multiple sources.
- (31) Social Service Centers - Identifies social service centers reported by multiple sources.
- (32) Veteran Organizations and Facilities

# Miami-dade County Demographic Profile

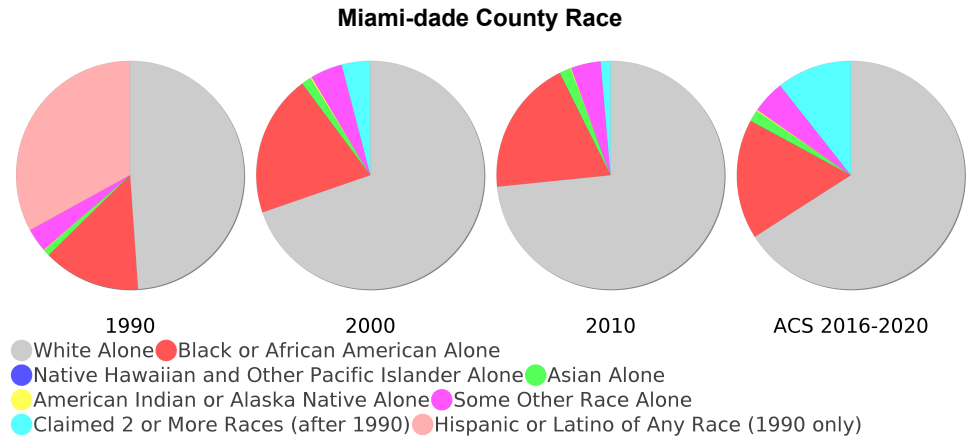
## General Population Trends - Miami-dade

Description	1990	2000	2010 <sup>1</sup>	ACS 2016-2020
Total Population	1,937,094	2,253,362	2,445,374	2,705,528
Total Households	692,355	776,774	827,556	902,200
Average Persons per Acre	1.528	1.774	1.925	2.13
Average Persons per Household	2.798	2.84	3.00	2.95
Average Persons per Family	3.413	3.488	3.591	3.71
Males	928,411	1,086,558	1,182,784	1,315,460
Females	1,008,683	1,166,804	1,262,590	1,390,068



## Race and Ethnicity Trends - Miami-dade

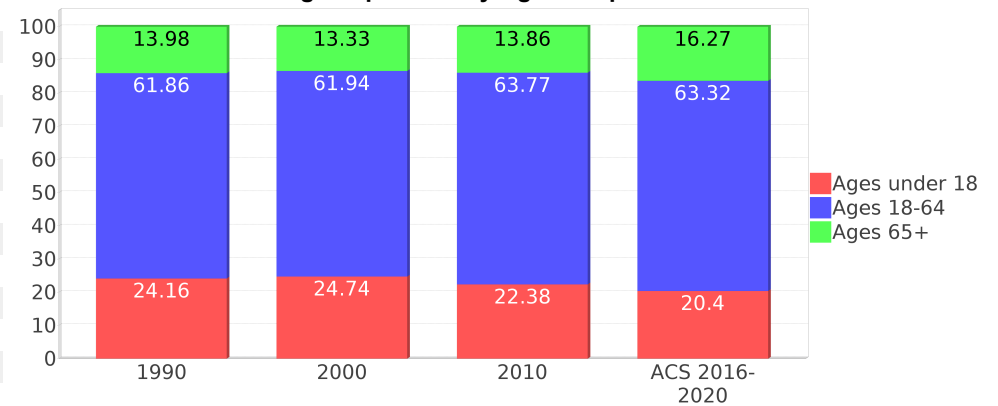
Description	1990	2000	2010 <sup>1</sup>	ACS 2016-2020
White Alone	1,413,015 (72.95%)	1,570,990 (69.72%)	1,794,730 (73.39%)	1,783,928 (65.94%)
Black or African American Alone	397,993 (20.55%)	452,333 (20.07%)	470,326 (19.23%)	457,814 (16.92%)
Native Hawaiian and Other Pacific Islander Alone	(NA)	605 (0.03%)	649 (0.03%)	869 (0.03%)
Asian Alone	25,869 (1.34%)	30,692 (1.36%)	38,813 (1.59%)	43,192 (1.60%)
American Indian or Alaska Native Alone	3,066 (0.16%)	4,841 (0.21%)	3,572 (0.15%)	5,273 (0.19%)
Some Other Race Alone	96,713 (4.99%)	102,436 (4.55%)	102,938 (4.21%)	125,840 (4.65%)
Claimed 2 or More Races	(NA)	91,465 (4.06%)	34,346 (1.40%)	288,612 (10.67%)
Hispanic or Latino of Any Race	953,407 (49.22%)	1,291,681 (57.32%)	1,565,410 (64.02%)	1,843,676 (68.14%)
Not Hispanic or Latino	983,687 (50.78%)	961,681 (42.68%)	879,964 (35.98%)	861,852 (31.86%)
Minority	1,351,487 (69.77%)	1,787,468 (79.32%)	2,112,884 (86.40%)	2,339,622 (86.48%)



## Age Trends - Miami-dade

Description	1990	2000	2010 <sup>1</sup>	ACS 2016-2020
Under Age 5	7.21%	6.43%	6.20%	5.80%
Ages 5-17	16.95%	18.31%	16.18%	14.60%
Ages 18-21	5.60%	5.24%	5.83%	4.79%
Ages 22-29	13.10%	10.97%	10.98%	10.71%
Ages 30-39	16.06%	16.33%	14.14%	13.84%
Ages 40-49	12.47%	14.49%	15.67%	14.23%
Ages 50-64	14.63%	14.90%	17.15%	19.76%
Age 65 and Over	13.98%	13.33%	13.86%	16.27%
-Ages 65-74	7.54%	7.23%	7.34%	8.68%
-Ages 75-84	4.88%	4.41%	4.71%	5.16%
-Age 85 and Over	1.55%	1.69%	1.81%	2.44%
Median Age	NA	36	38	40.2

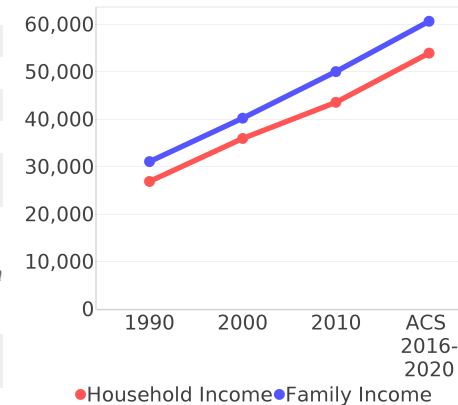
Percentage Population by Age Group - Miami-dade



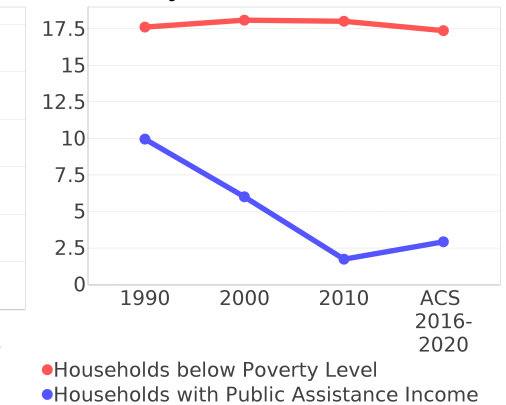
## Income Trends - Miami-dade

Description	1990	2000	2010 <sup>1</sup>	ACS 2016-2020
Median Household Income	\$26,909	\$35,966	\$43,605	\$53,975
Median Family Income	\$31,113	\$40,260	\$50,065	\$60,666
Population below Poverty Level	17.94%	17.97%	17.18%	16.01%
Households below Poverty Level	17.62%	18.10%	18.02%	17.38%
Households with Public Assistance Income	9.96%	6.01%	1.74%	2.93%

Income Trends



Poverty and Public Assistance



## Disability Trends - Miami-dade

See the Data Sources section below for an explanation about the differences in disability data among the various years.

Description	1990	2000	2010 <sup>1</sup>	ACS 2016-2020
Population 16 To 64 Years with a disability	78,949 (5.28%)	324,062 (15.60%)	NA (NA)	NA (NA)
Population 20 To 64 Years with a disability	NA (NA)	NA (NA)	NA (NA)	109,429 (6.70%)

## Educational Attainment Trends - Miami-dade

Age 25 and Over

Description	1990	2000	2010 <sup>1</sup>	ACS 2016-2020
Less than 9th Grade	228,426 (17.83%)	219,066 (14.68%)	202,413 (12.23%)	178,065 (9.25%)
9th to 12th Grade, No Diploma	219,856 (17.16%)	260,287 (17.45%)	178,335 (10.77%)	171,699 (8.92%)
High School Graduate or Higher	833,013 (65.01%)	1,012,436 (67.87%)	1,274,809 (77.00%)	1,576,177 (81.84%)
Bachelor's Degree or Higher	240,460 (18.77%)	323,399 (21.68%)	434,574 (26.25%)	590,305 (30.65%)

## Language Trends - Miami-dade

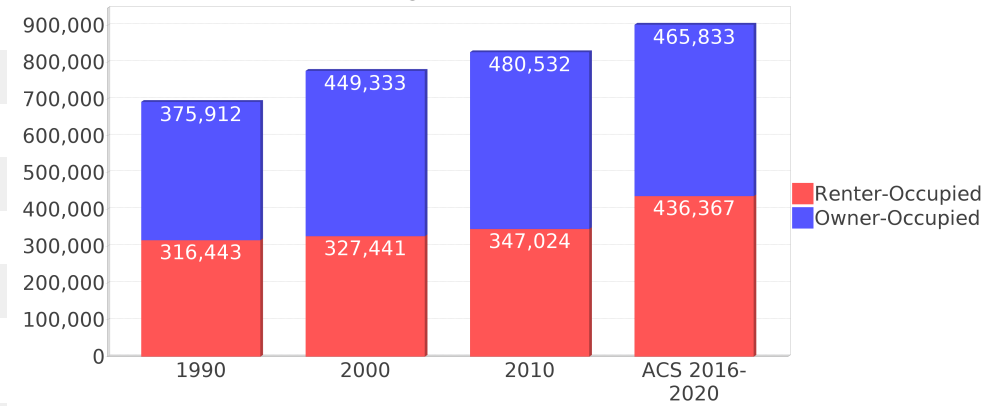
Age 5 and Over

Description	1990	2000	2010 <sup>1</sup>	ACS 2016-2020
Speaks English Well	221,943 (12.34%)	285,783 (13.55%)	302,397 (13.18%)	340,210 (13.35%)
Speaks English Not Well	NA (NA)	261,782 (12.42%)	294,777 (12.85%)	322,484 (12.65%)
Speaks English Not at All	NA (NA)	184,249 (8.74%)	217,650 (9.49%)	217,705 (8.54%)
Speaks English Not Well or Not at All	341,005 (18.96%)	446,031 (21.15%)	512,427 (22.34%)	540,189 (21.20%)
Speaks English Less than Very Well	NA (NA)	731,814 (34.71%)	814,824 (35.52%)	880,399 (34.55%)

## Housing Trends - Miami-dade

Description	1990	2000	2010 <sup>1</sup>	ACS 2016-2020
Total	771,288	852,278	980,580	1,032,310
Units per Acre	0.608	0.671	0.772	0.81
Single-Family Units	365,600	448,569	508,364	511,392
Multi-Family Units	301,870	387,550	457,465	507,581
Mobile Home Units	15,359	15,338	14,234	12,890
Owner-Occupied Units	375,912	449,333	480,532	465,833
Renter-Occupied Units	316,443	327,441	347,024	436,367
Vacant Units	78,933	75,504	153,024	130,110
Median Housing Value	\$86,000	\$113,200	\$269,600	\$310,700
Occupied Housing Units w/No Vehicle	110,809 (16.00%)	111,323 (14.33%)	91,558 (11.06%)	90,752 (10.06%)
Median year householder moved into unit - Total	NA	NA	NA	2012
Median year householder moved into unit - Owner Occupied	NA	NA	NA	2005
Median year householder moved into unit - Renter Occupied	NA	NA	NA	2015
Abroad 1 year ago	NA	NA	NA	45,317
Different house in United States 1 year ago	NA	NA	NA	271,359
Same house 1 year ago	NA	NA	NA	2,359,939
Geographical Mobility in the Past Year - Total	NA	NA	NA	2,359,939

## Housing Tenure - Miami-dade



# County Data Sources

## ACS vs Census Data

(1) The 2010 Census data is represented by a combination of decennial and ACS (2006-2010) data. The General Population Trends, Race and Ethnicity Trends, Age Trends are entirely from decennial. The Income Trends, Language Trends are entirely from the ACS. The Housing Trends section is derived from both: Decennial (Total # Housing Units, Housing Units per Acre, Owner-Occupied Units, Renter-Occupied Units, Vacant Units); ACS (Single Family Units, Multi-family Units, Mobile Homes, Median Housing Value, Occupied Housing Units w/No Vehicle).

## About the Census Data

(34) Use caution when comparing the 100% count data (Decennial Census) to the sample-based data (ACS). In any given year, about one in 40 U.S. households will receive the ACS questionnaire. Over any five-year period, about one in eight households will receive the questionnaire, as compared to about one in six that received the long form questionnaire for the Decennial Census 2000. (Source: [https://www.census.gov/content/dam/Census/programs-surveys/acs/news/10ACS\\_keyfacts.pdf](https://www.census.gov/content/dam/Census/programs-surveys/acs/news/10ACS_keyfacts.pdf)) The U.S. Census Bureau provides help with this process: <https://www.census.gov/programs-surveys/acs/guidance/comparing-acs-data.html>

(35) Use caution when interpreting changes in race and ethnicity over time. Starting with the 2000 Decennial Census, respondents were given a new option of selecting one or more race categories. Also in 2000, the placement of the question about Hispanic origin changed, helping to increase responsiveness to the Hispanic-origin question. Because of these and other changes, the 1990 data on race and ethnicity are not directly comparable with data from later censuses. (Source: <http://www.census.gov/prod/2001pubs/c2kbr01-1.pdf>; [http://www.census.gov/pred/www/rpts/Race and Ethnicity FINAL report.pdf](http://www.census.gov/pred/www/rpts/Race%20and%20Ethnicity%20FINAL%20report.pdf))

(36) The "Minority" calculations are derived from Census and ACS data using both the race and ethnicity responses. On this report, "Minority" refers to individuals who list a race other than White and/or list their ethnicity as Hispanic/Latino. In other words, people who are multi-racial, any single race other than White, or Hispanic/Latino of any race are considered minorities.

(37) Disability data is not included in the 2010 Decennial Census or the 2006-2010 ACS. This data is available in the ACS 2016-2020 ACS. Because of changes made to the Census and ACS questions between 1990 and ACS, disability variables should not be compared from year to year. For example: 1) with the 1990 data, the disabilities are listed as a "work disability" while this distinction is not made with 2000 or ACS data; 2) the ACS data includes the institutionalized population (e.g. persons in prisons and group homes) while this population is not included in 1990 or 2000; and 3) the age groupings changed over the years.

(38) The category Bachelor's Degree or Higher under the heading Educational Attainment Trends is a subset of the category High School Graduate or Higher.

## Metadata

- (39) Community and Fraternal Centers [https://etdmpub.fl-a-etat.org/meta/gc\\_communitycenter.xml](https://etdmpub.fl-a-etat.org/meta/gc_communitycenter.xml)
- (40) Correctional Facilities in Florida [https://etdmpub.fl-a-etat.org/meta/gc\\_correctional.xml](https://etdmpub.fl-a-etat.org/meta/gc_correctional.xml)
- (41) Cultural Centers in Florida [https://etdmpub.fl-a-etat.org/meta/gc\\_culturecenter.xml](https://etdmpub.fl-a-etat.org/meta/gc_culturecenter.xml)
- (42) Fire Department and Rescue Station Facilities in Florida [https://etdmpub.fl-a-etat.org/meta/gc\\_firestat.xml](https://etdmpub.fl-a-etat.org/meta/gc_firestat.xml)
- (43) Local, State, and Federal Government Buildings in Florida [https://etdmpub.fl-a-etat.org/meta/gc\\_govbuild.xml](https://etdmpub.fl-a-etat.org/meta/gc_govbuild.xml)
- (44) Florida Health Care Facilities [https://etdmpub.fl-a-etat.org/meta/gc\\_health.xml](https://etdmpub.fl-a-etat.org/meta/gc_health.xml)
- (45) Hospital Facilities in Florida [https://etdmpub.fl-a-etat.org/meta/gc\\_hospitals.xml](https://etdmpub.fl-a-etat.org/meta/gc_hospitals.xml)
- (46) Law Enforcement Facilities in Florida [https://etdmpub.fl-a-etat.org/meta/gc\\_lawenforce.xml](https://etdmpub.fl-a-etat.org/meta/gc_lawenforce.xml)
- (47) Florida Parks and Recreational Facilities [https://etdmpub.fl-a-etat.org/meta/gc\\_parks.xml](https://etdmpub.fl-a-etat.org/meta/gc_parks.xml)
- (48) Religious Centers [https://etdmpub.fl-a-etat.org/meta/gc\\_religion.xml](https://etdmpub.fl-a-etat.org/meta/gc_religion.xml)
- (49) Florida Public and Private Schools [https://etdmpub.fl-a-etat.org/meta/gc\\_schools.xml](https://etdmpub.fl-a-etat.org/meta/gc_schools.xml)
- (50) Social Service Centers [https://etdmpub.fl-a-etat.org/meta/gc\\_socialservice.xml](https://etdmpub.fl-a-etat.org/meta/gc_socialservice.xml)
- (51) Assisted Rental Housing Units in Florida [https://etdmpub.fl-a-etat.org/meta/gc\\_assisted\\_housing.xml](https://etdmpub.fl-a-etat.org/meta/gc_assisted_housing.xml)
- (52) Group Care Facilities <https://etdmpub.fl-a-etat.org/meta/groupcare.xml>
- (53) Mobile Home Parks in Florida [https://etdmpub.fl-a-etat.org/meta/gc\\_mobilehomes.xml](https://etdmpub.fl-a-etat.org/meta/gc_mobilehomes.xml)
- (54) Migrant Camps in Florida <https://etdmpub.fl-a-etat.org/meta/migrant.xml>
- (55) Veteran Organizations and Facilities [https://etdmpub.fl-a-etat.org/meta/gc\\_veterans.xml](https://etdmpub.fl-a-etat.org/meta/gc_veterans.xml)
- (56) Generalized Land Use [https://etdmpub.fl-a-etat.org/meta/lu\\_gen.xml](https://etdmpub.fl-a-etat.org/meta/lu_gen.xml)
- (57) Census Block Groups in Florida [https://etdmpub.fl-a-etat.org/meta/e2\\_cenacs\\_cci.xml](https://etdmpub.fl-a-etat.org/meta/e2_cenacs_cci.xml)
- (58) 1990 Census Block Groups in Florida [https://etdmpub.fl-a-etat.org/meta/e2\\_cenblkgrp\\_1990\\_cci.xml](https://etdmpub.fl-a-etat.org/meta/e2_cenblkgrp_1990_cci.xml)
- (59) 2000 Census Block Groups in Florida [https://etdmpub.fl-a-etat.org/meta/e2\\_cenblkgrp\\_2000\\_cci.xml](https://etdmpub.fl-a-etat.org/meta/e2_cenblkgrp_2000_cci.xml)
- (60) 2010 Census Block Groups in Florida [https://etdmpub.fl-a-etat.org/meta/e2\\_cenblkgrp\\_2010\\_cci.xml](https://etdmpub.fl-a-etat.org/meta/e2_cenblkgrp_2010_cci.xml)