

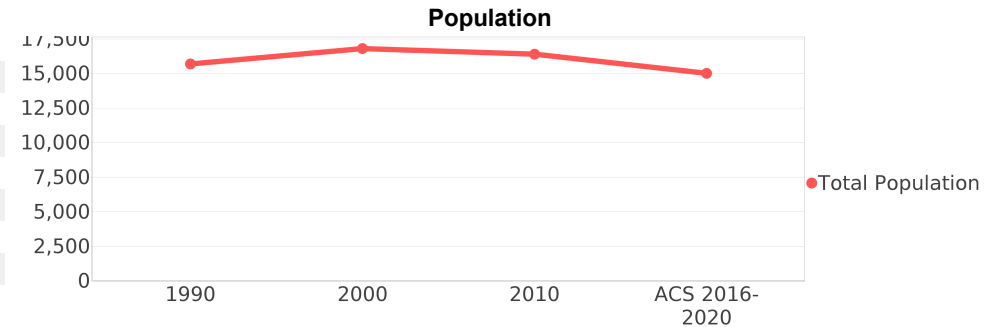
Sunset (CDP)

Area: 3,558 square miles
Jurisdiction - Cities: NA
Jurisdiction - Counties: Miami-Dade



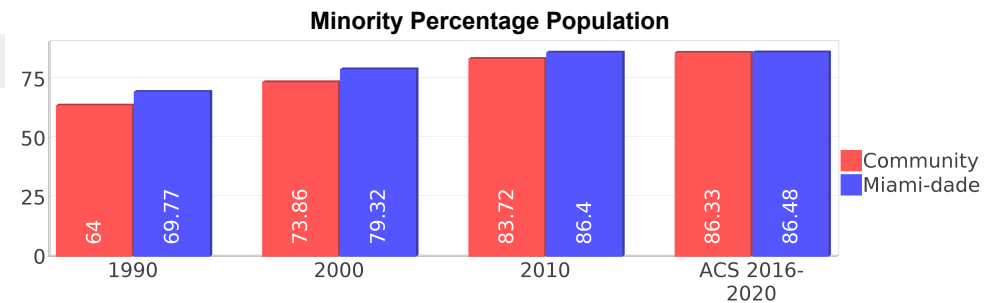
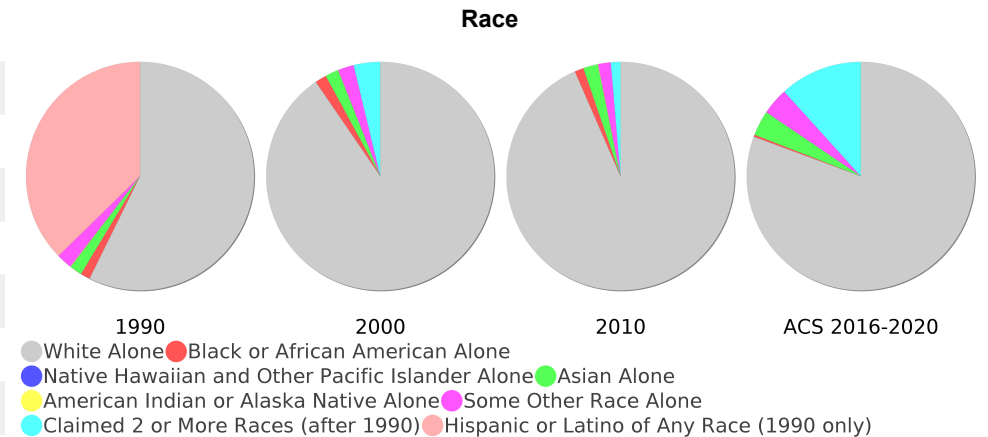
General Population Trends

Description	1990	2000	2010 ¹	ACS 2016-2020
Total Population	15,687	16,808	16,395	15,005
Total Households	5,005	5,417	5,354	4,997
Average Persons per Acre	8.10	9.80	8.60	7.60
Average Persons per Household	3.07	2.99	3.11	3.03
Average Persons per Family	3.45	3.41	3.16	3.57
Males	7,562	7,995	7,695	7,022
Females	8,125	8,813	8,699	7,983



Race and Ethnicity Trends

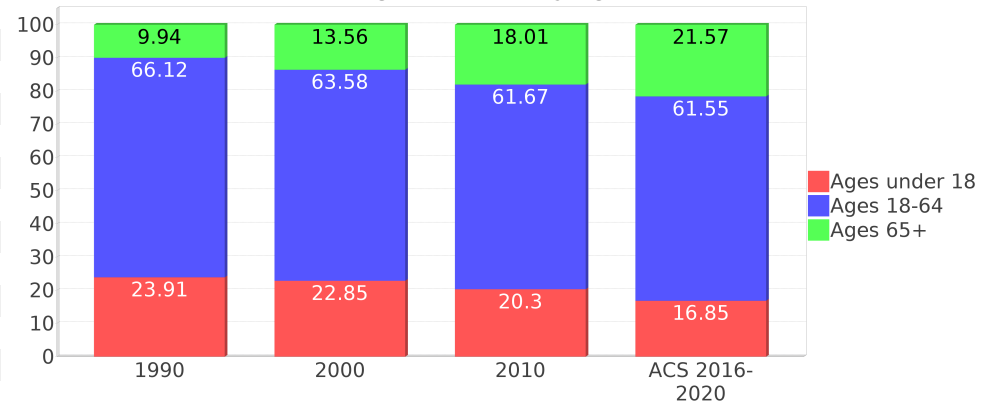
Description	1990	2000	2010 ¹	ACS 2016-2020
White Alone	14,336 (91.39%)	15,198 (90.42%)	15,315 (93.41%)	12,098 (80.63%)
Black or African American Alone	340 (2.17%)	272 (1.62%)	208 (1.27%)	41 (0.27%)
Native Hawaiian and Other Pacific Islander Alone	0 (0.00%)	0 (0.00%)	1 (0.01%)	0 (0.00%)
Asian Alone	433 (2.76%)	315 (1.87%)	338 (2.06%)	534 (3.56%)
American Indian or Alaska Native Alone	18 (0.11%)	7 (0.04%)	9 (0.05%)	0 (0.00%)
Some Other Race Alone	557 (3.55%)	379 (2.25%)	296 (1.81%)	571 (3.81%)
Claimed 2 or More Races	NA (NA)	634 (3.77%)	225 (1.37%)	1,761 (11.74%)
Hispanic or Latino of Any Race	9,333 (59.50%)	11,648 (69.30%)	13,170 (80.33%)	12,374 (82.47%)
Not Hispanic or Latino	6,354 (40.50%)	5,160 (30.70%)	3,225 (19.67%)	2,631 (17.53%)
Minority	10,040 (64.00%)	12,414 (73.86%)	13,726 (83.72%)	12,954 (86.33%)



Age Trends

Description	1990	2000	2010 ¹	ACS 2016-2020
Under Age 5	6.36%	5.79%	5.04%	4.01%
Ages 5-17	17.56%	17.06%	15.27%	12.85%
Ages 18-21	6.01%	5.21%	5.09%	5.02%
Ages 22-29	12.50%	9.53%	9.48%	7.27%
Ages 30-39	15.63%	15.23%	11.76%	9.74%
Ages 40-49	14.61%	15.24%	16.10%	18.92%
Ages 50-64	17.36%	18.38%	19.23%	20.59%
Age 65 and Over	9.94%	13.56%	18.01%	21.57%
-Ages 65-74	6.15%	8.07%	9.76%	12.70%
-Ages 75-84	3.03%	4.09%	5.92%	5.52%
-Age 85 and Over	0.76%	1.38%	2.32%	3.34%
Median Age	NA	39	43	45

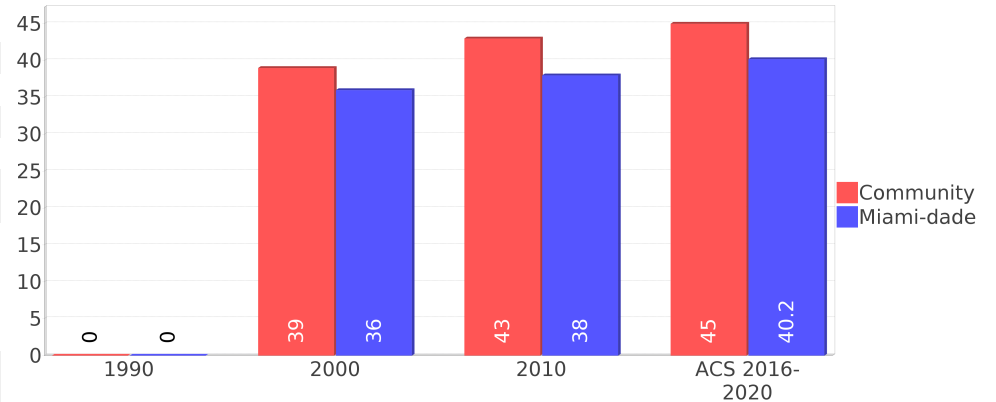
Percentage Population by Age Group



Income Trends

Description	1990	2000	2010 ¹	ACS 2016-2020
Median Household Income	\$42,600	\$53,918	\$61,965	\$83,891
Median Family Income	\$46,629	\$57,658	\$67,037	\$96,786
Population below Poverty Level	6.46%	6.66%	9.66%	10.72%
Households below Poverty Level	6.25%	7.09%	9.04%	12.75%
Households with Public Assistance Income	3.04%	2.70%	0.86%	2.40%

Median Age Comparison



Disability Trends

See the Data Sources section below for an explanation about the differences in disability data among the various years.

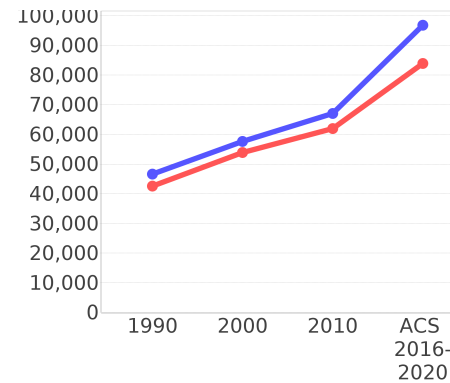
Description	1990	2000	2010 ¹	ACS 2016-2020
Population 16 To 64 Years with a disability	504 (4.04%)	1541 (9.77%)	(NA)	(NA)
Population 20 To 64 Years with a disability	(NA)	(NA)	(NA)	385 (4.29%)

Educational Attainment Trends

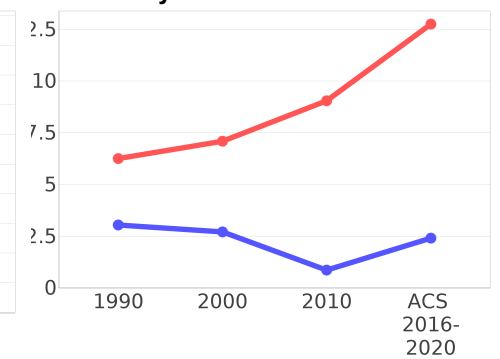
Age 25 and Over

Description	1990	2000	2010 ¹	ACS 2016-2020
Less than 9th Grade	1,067 (10.32%)	907 (7.93%)	846 (7.42%)	587 (5.23%)
9th to 12th Grade, No Diploma	1,036 (10.02%)	1,178 (10.30%)	1,131 (9.92%)	572 (5.10%)
High School Graduate or Higher	8,237 (79.65%)	9,346 (81.75%)	9,423 (82.65%)	10,064 (89.67%)
Bachelor's Degree or Higher	2,726 (26.36%)	3,567 (31.20%)	3,966 (34.79%)	4,497 (40.07%)

Income Trends



Poverty and Public Assistance



Language Trends

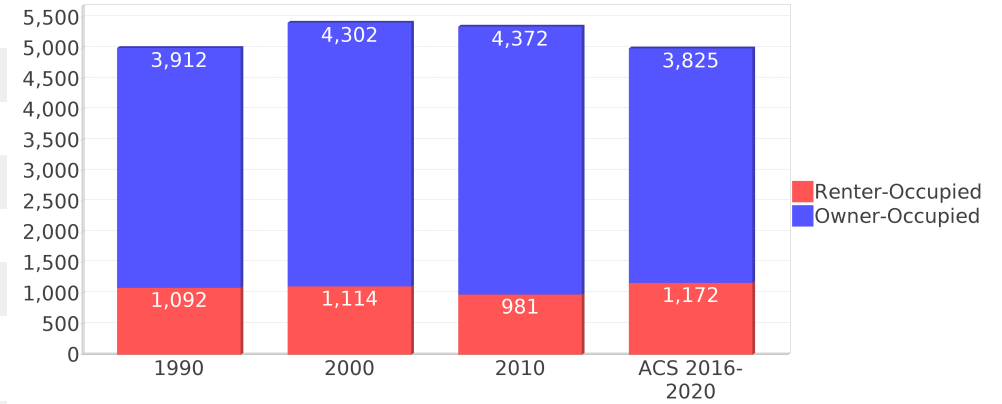
Age 5 and Over

Description	1990	2000	2010 ¹	ACS 2016-2020
Speaks English Well	1,920 (12.96%)	2,211 (13.96%)	1,906 (12.38%)	1,697 (11.78%)
Speaks English Not Well	NA (NA)	1,627 (10.27%)	1,937 (12.58%)	1,151 (7.99%)
Speaks English Not at All	NA (NA)	841 (5.31%)	745 (4.84%)	855 (5.94%)
Speaks English Not Well or Not at All	1,840 (12.42%)	2,468 (15.59%)	2,682 (17.41%)	2,006 (13.93%)
Speaks English Less than Very Well	NA (NA)	4,680 (29.55%)	4,590 (29.80%)	3,704 (25.72%)

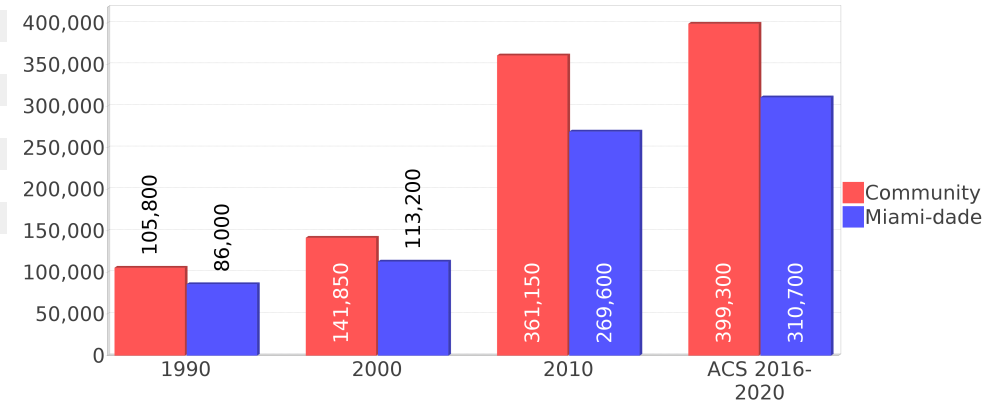
Housing Trends

Description	1990	2000	2010 ¹	ACS 2016-2020
Total	5,185	5,535	5,590	5,304
Units per Acre	2.35	2.47	2.54	2.41
Single-Family Units	4,294	4,789	4,841	4,377
Multi-Family Units	692	746	736	926
Mobile Home Units	0	0	0	0
Owner-Occupied Units	3,912	4,302	4,372	3,825
Renter-Occupied Units	1,092	1,114	981	1,172
Vacant Units	179	118	236	306
Median Housing Value	\$105,800	\$141,850	\$361,150	\$399,300
Occupied Housing Units w/No Vehicle	219 (4.37%)	217 (4.01%)	212 (3.96%)	36 (0.72%)

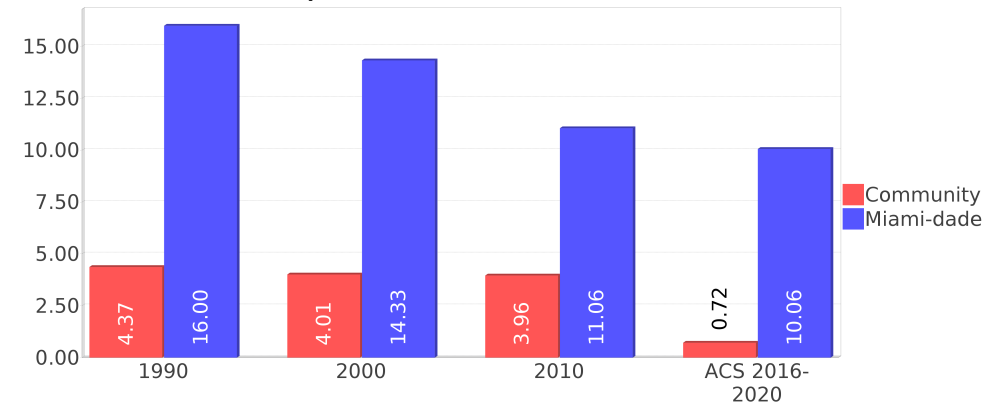
Housing Tenure



Median Housing Value Comparison



Occupied Units With No Vehicles Available



Geographic Mobility

Description	ACS 2016-2020
Median year householder moved into unit - Total	2003
Median year householder moved into unit - Owner Occupied	2000
Median year householder moved into unit - Renter Occupied	2012
Abroad 1 year ago	83
Different house in United States 1 year ago	920
Same house 1 year ago	13,859
Geographical Mobility in the Past Year - Total	14,862

Computers and Internet

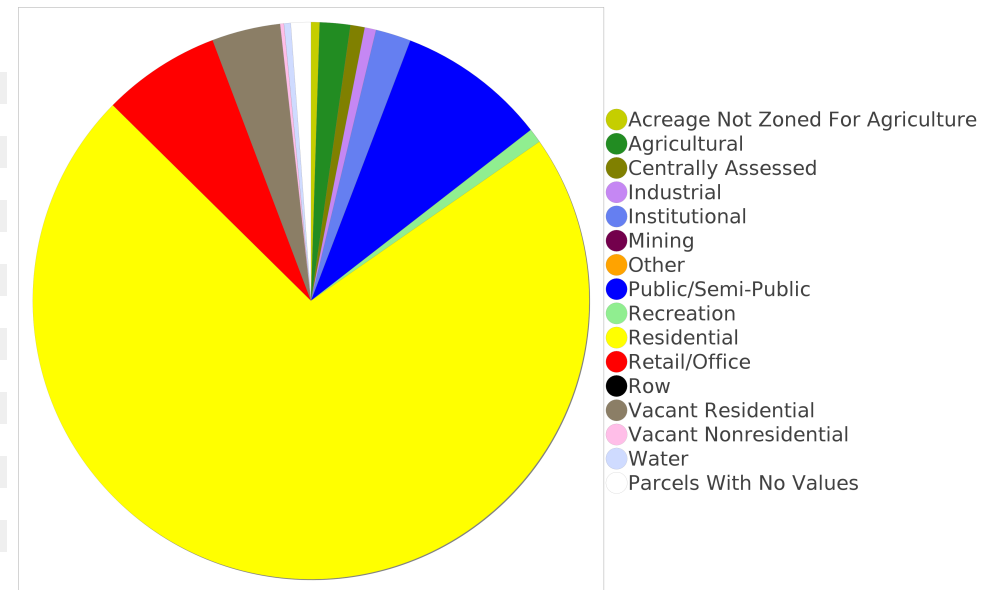
Description	ACS 2016-2020
Total Households Types of Computers in HH	4,997
Households with 1 or more device	4,840
Households with no computer	157
Total Households Presence and Types of Internet Subscriptions	4,997
Households with an internet subscription	4,637
Households with internet access without a subscription	121
Households with no internet access	238

Household Languages

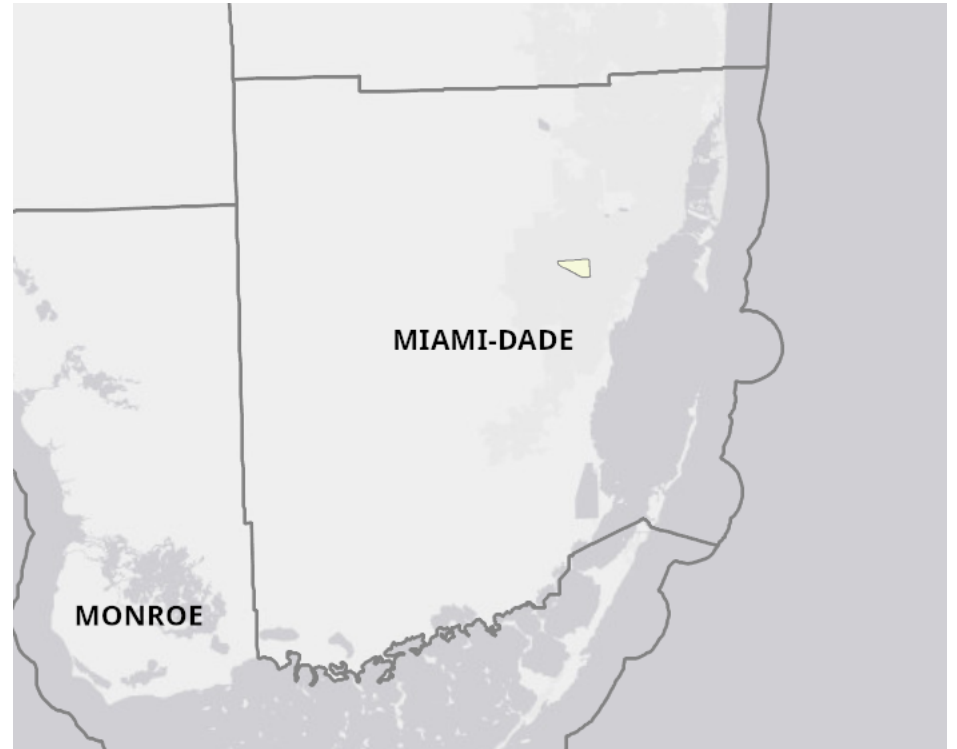
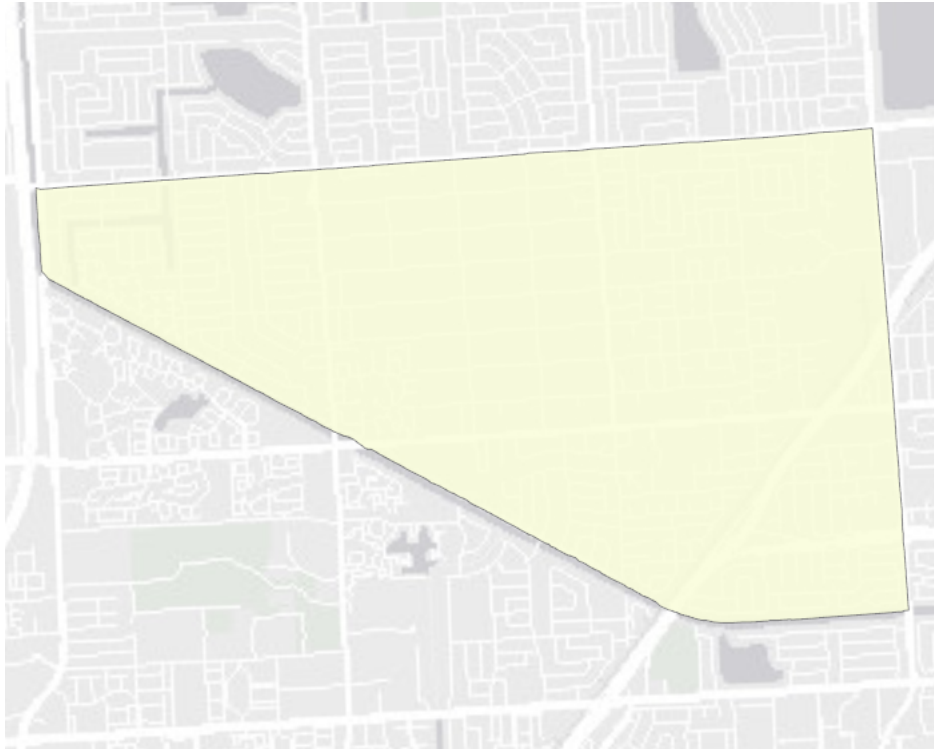
Description	ACS 2016-2020
Total Households by Household Language	4,997
Household Not Limited English Speaking Status	4,152
Spanish: Limited English speaking household	808
Indo-European languages: Limited English speaking household	9
Asian and Pacific Island languages: Limited English speaking household	27
Other languages: Limited English speaking household	0

Existing Land Use

Land Use Type	Acres	Percentage
Acreage Not Zoned For Agriculture	9	0.40%
Agricultural	32	1.41%
Centrally Assessed	15	0.66%
Industrial	12	0.53%
Institutional	37	1.62%
Mining	0	0.00%
Other	0	0.00%
Public/Semi-Public	157	6.89%
Recreation	15	0.66%
Residential	1,302	57.17%
Retail/Office	124	5.45%
Row	0	0.00%
Vacant Residential	72	3.16%
Vacant Nonresidential	4	0.18%
Water	7	0.31%
Parcels With No Values	21	0.92%



Location Maps



Community Facilities

The community facilities information below is useful in a variety of ways for environmental evaluations. These community resources should be evaluated for potential sociocultural effects, such as accessibility and relocation potential. The facility types may indicate the types of population groups present in the project study area. Facility staff and leaders can be sources of community information such as who uses the facility and how it is used. Additionally, community facilities are potential public meeting venues.

Community and Fraternal Centers

Facility Name	Address	Zip Code
ELKS LODGE 948	10301 SW 72ND ST	33173
VVA CHAPTER 620	9300 SW 72ND ST	33173
TAOIST TAI CHI SOCIETY OF TEH USA	10300 SW 72ND ST	33173
VFW POST 10212 - JOSE MARTI	9300 SUNSET DR	33173
LIONS CLUB - MIAMI BUENA VISTA-BILTMORE	MILLER RD & SW 88TH AVE	33173
MILDRED PEPPER MULTI-PURPOSE SENIOR CENTER	10000 SW 56 ST	33174
YMCA - MIAMI	10151 SW 64TH ST	33173
AMERICAN LEGION POST 346	9300 SW 72ND ST	33173

Fire Department and Rescue Station Facilities

Facility Name	Address	Zip Code
MIAMI-DADE COUNTY FIRE DEPARTMENT STATION 13 (OLD HEADQUARTERS BUILDING)	6000 SW 87TH AVE	33173

Florida Parks and Recreational Facilities

Facility Name	Address	Zip Code
SNAPPER CREEK CANAL (C-2) BOAT RAMP AT SW 97TH AVENUE	NORTH SNAPPER CREEK DRIVE & SW 97TH COURT	33173
SNAPPER CREEK CANAL AT 117TH AVENUE BOAT RAMP	5836 SW 117TH AVE	33183
KENDALLWOOD PARK	9304 SW 80 ST	33173
SUNSET PARK	7321 SW 97TH AVE	33173

Religious Centers

Facility Name	Address	Zip Code
BIBLE TRUTH CHAPEL	6300 SW 99TH AVENUE	33173
IGLESIA DE DIOS KENDALL	6814 SW 102ND AVENUE	33173
GATEWAY BAPTIST CHURCH	6500 SW 97TH AVENUE	33173
SOUTHWEST ALLIANCE CHURCH	10251 SW 64TH STREET	33173
SUNSET CONGREGATIONAL CHURCH	9025 SW 72ND STREET	33173
IGLESIA LUTERANA SAN PABLO	10700 SW 56TH STREET	33165
CRISTO LA SOLUCION	9860 SW 56TH STREET	33165
SUNSET CHAPEL ASSEMBLY OF GOD	9393 SW 72ND STREET	33173
IGLESIA METODISTA UNIDAD WESTWOOD	10780 SW 56TH ST	33165

Public Schools

Facility Name	Address	Zip Code
GLADES MIDDLE SCHOOL	9451 SW 64TH ST	33173
BRIDGEPREP ACADEMY SOUTH	10700 SW 56TH ST	33165
TRUE NORTH CLASSICAL ACADEMY KENDALL	9393 SUNSET DR	33173
SNAPPER CREEK ELEMENTARY SCHOOL	10151 SW 64TH ST	33173
TRUE NORTH CLASSICAL ACADEMY HIGH SCHOOL	9393 SUNSET DR	33173
TRUE NORTH CLASSICAL ACADEMY	9393 SW 72ND ST	33173

Veteran Organizations and Facilities

Facility Name	Address	Zip Code
AMERICAN LEGION POST 346	9300 SW 72ND ST	33173
VFW POST 10212 - JOSE MARTI	9300 SUNSET DRIVE	33173
VVA CHAPTER 620	9300 SW 72ND ST	33173

Group Care Facilities

Facility Name	Address	Zip Code
SUNSET SENIOR CARE OF MIAMI	9820 SW 72 STREET	33173
SPRING OF LIFE ALF	11465 SW 57 STREET	33173
ESTELA'S HOME FOR THE ELDERLY, INC.	9940 SW 74TH STREET	33173
ANGELS HOME, THE	9564 SW 58 STREET	33173
HAPPY FACES ACADEMY LLC	9557 SW 72 STREET	33173
GLADES MIDDLE SCHOOL	9451 SW 64 STREET	33173
VALDES RETIREMENT HOME	8100 SW 95 COURT	33173
TRUE NORTH CLASSICAL ACADEMY	9393 SW 72 STREET	33173
E & A PARADISE HOME	5925 SW 117 AVENUE	33183
SHALON ALF	7046 SW 103RD PLACE	33183
LOVE VILLAGE, A.L.F.	11060 SW 58 TERRACE	33173
MIAMI ASTURIAS HOME	10854 SW 69TH DRIVE	33173
ISA ADULT CARE	7020 SW 107 AVENUE	33173
STAR OF MARY ADULT CENTER	6425 SW 93 PLACE	33173
LUNA ACADEMY, INC.	9025 SW 72 STREET	33173
APOSTOLADO HOME	11081 SW 63 TERRACE	33173
BRIDGEPREP ACADEMY SOUTH CAMPUS (MAIN)	10700 SW 56 STREET	33165
SNAPPER CREEK ELEM.	10151 SW 64 STREET	33173
LOVING CARE CENTER, THE	9210 SW 56 STREET	33165
RESIDENCIA SAN LAZARO	7120 SW 92 AVENUE	33173

Block Groups

The following Census Block Groups were used to calculate demographics for this report.

1990 Census Block Groups

120250086005, 120250086002, 120250084072, 120250077023, 120250077033, 120250085013, 120250086003, 120250085016, 120250087008, 120250084071, 120250085012, 120250085021, 120250086004

2000 Census Block Groups

120860087008, 120860084072, 120860086022, 120860077033, 120860087003, 120860086011, 120860086023, 120860086012, 120860084071, 120860077023, 120860085012, 120860087002, 120860084132, 120860085021, 120860085013, 120860085016, 120860101114, 120860086021

2010 Census Block Groups

120860087014, 120860084074, 120860086023, 120860085022, 120860087011, 120860086021, 120860085013, 120860077023, 120860077051, 120860087023, 120860085012, 120860085021, 120860086011, 120860084071, 120860086022, 120860084073, 120860086012, 120860085011

Census Block Groups

120860085022, 120860086011, 120860085041, 120860084233, 120860086033, 120860086041, 120860084221, 120860077072, 120860077054, 120860087042, 120860087041, 120860085043, 120860084222, 120860086031, 120860086032, 120860084231, 120860087023, 120860085042, 120860086012, 120860077051, 120860077064, 120860085021

Data Sources

ACS vs Census Data

(1) The 2010 Census data is represented by a combination of decennial and ACS (2006-2010) data. The General Population Trends, Race and Ethnicity Trends, Age Trends are entirely from decennial. The Income Trends, Language Trends are entirely from the ACS. The Housing Trends section is derived from both: Decennial (Total # Housing Units, Housing Units per Acre, Owner-Occupied Units, Renter-Occupied Units, Vacant Units); ACS (Single Family Units, Multi-family Units, Mobile Homes, Median Housing Value, Occupied Housing Units w/No Vehicle).

Area

(2) The geographic area of the community based on a user-defined community boundary or area of interest (AOI) boundary.

Jurisdiction

(3) Jurisdiction(s) includes local government boundaries that intersect the user-defined community or AOI boundary.

Goals, Values and History

(4) Information under the headings Goals and Values and History is entered manually by the user before the Sociocultural Data Report (SDR) is generated. This information is usually not available for communities with boundaries that are based on Census-defined places (i.e., not user-specified).

Demographic Data

(5) Demographic data reported under the headings General Population Trends, Race and Ethnicity Trends, Age Trends, Income Trends, Educational Attainment Trends, Language Trends, and Housing Trends is from the U.S. Decennial Census for 1990 and 2000 and the American Community Survey (ACS) 5-year estimates for 2006-2010 and ACS 2016-2020. The data was gathered at the block group level for user-defined communities, Census places, and AOIs, and at the county level for counties. Depending on the dataset, the data represents 100% counts (Census Summary File 1) or sample-based information (Census Summary File 3 or ACS).

About the Census Data

(6) The block group analysis for ETDM project analysis areas, user-defined communities, Census places, and AOI boundaries do not always correspond precisely to block group boundaries. To estimate the actual population more accurately, the SDR analysis adjusts the geographic area and data of affected block groups using the following methodology:

Delete overlapping census blocks with extremely low populations (2 or fewer people)
Remove the portion of the block group that lies outside of the analysis area
Recalculate the demographics assuming an equal area distribution of the population

Note that there may be areas where there is no population.

(7) Use caution when comparing the 100% count data (Decennial Census) to the sample-based data (ACS). In any given year, about one in 40 U.S. households will receive the ACS questionnaire. Over any five-year period, about one in eight households will receive the questionnaire, as compared to about one in six that received the long form questionnaire for the Decennial Census 2000. (Source: https://www.census.gov/content/dam/Census/programs-surveys/acs/news/10ACS_keyfacts.pdf) The U.S. Census Bureau provides help with this process: <https://www.census.gov/programs-surveys/acs/guidance/comparing-acs-data.html>

(8) Use caution when interpreting changes in race and ethnicity over time. Starting with the 2000 Decennial Census, respondents were given a new option of selecting one or more race categories. Also in 2000, the placement of the question about Hispanic origin changed, helping to increase responsiveness to the Hispanic-origin question. Because of these and other changes, the 1990 data on race and ethnicity are not directly comparable with data from later censuses. (Source: <http://www.census.gov/prod/2001pubs/c2kbr01-1.pdf>; <http://www.census.gov/pred/www/rpts/Race and Ethnicity FINAL report.pdf>)

(9) The "Minority" calculations are derived from Census and ACS data using both the race and ethnicity responses. On this report, "Minority" refers to individuals who list a race other than White and/or list their ethnicity as Hispanic/Latino. In other words, people who are multi-racial, any single race other than White, or Hispanic/Latino of any race are considered minorities.

(10) Disability data is not included in the 2010 Decennial Census or the 2006-2010 ACS. This data is available in the ACS 2016-2020 ACS. Because of changes made to the Census and ACS questions between 1990 and ACS, disability variables should not be compared from year to year. For example: 1) with the 1990 data, the disabilities are listed as a "work disability" while this distinction is not made with 2000 or ACS data; 2) the ACS data includes the institutionalized population (e.g. persons in prisons and group homes) while this population is not included in 1990 or 2000; and 3) the age groupings changed over the years.

(11) The category Bachelor's Degree or Higher under the heading Educational Attainment Trends is a subset of the category High School Graduate or Higher.

(12) Income of households. This includes the income of the householder and all other individuals 15 years old and over in the household, whether they are related to the householder or not. Because many households consist of only one person, average household income is usually less than average family income.

(13) Income of families. In compiling statistics on family income, the incomes of all members 15 years old and over related to the householder are summed and treated as a single amount.

(14) Age trends. The median age for 1990 is not available.

Land Use Data

(15) The Land Use information indicates acreages and percentages for the generalized land use types used to group parcel-specific, existing land use assigned by the county property appraiser office according to the Florida Department of Revenue land use codes.

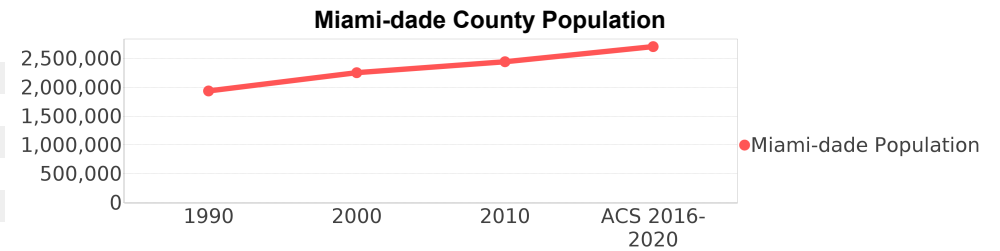
Community Facilities Data

- (16) Assisted Rental Housing Units - Identifies multifamily rental developments that receive funding assistance under federal, state, and local government programs to offer affordable housing as reported by the Shimberg Center for Housing Studies, University of Florida.
- (17) Mobile Home Parks - Identifies approved or acknowledged mobile home parks reported by the Florida Department of Business and Professional Regulation and Florida Department of Health.
- (18) Migrant Camps - Identifies migrant labor camp facilities inspected by the Florida Department of Health.
- (19) Group Care Facilities - Identifies group care facilities inspected by the Florida Department of Health.
- (20) Community Center and Fraternal Association Facilities - Identifies facilities reported by multiple sources.
- (21) Law Enforcement Correctional Facilities - Identifies facilities reported by multiple sources.
- (22) Cultural Centers - Identifies cultural centers including organizations, buildings, or complexes that promote culture and arts (e.g., aquariums and zoological facilities; arboreta and botanical gardens; dinner theaters; drive-ins; historical places and services; libraries; motion picture theaters; museums and art galleries; performing arts centers; performing arts theaters; planetariums; studios and art galleries; and theater producers stage facilities) reported by multiple sources.
- (23) Fire Department and Rescue Station Facilities - Identifies facilities reported by multiple sources.
- (24) Government Buildings - Identifies local, state, and federal government buildings reported by multiple sources.
- (25) Health Care Facilities - Identifies health care facilities including abortion clinics, dialysis clinics, medical doctors, nursing homes, osteopaths, state laboratories/clinics, and surgicenters/walk-in clinics reported by the Florida Department of Health.
- (26) Hospital Facilities - Identifies hospital facilities reported by multiple sources.
- (27) Law Enforcement Facilities - Identifies law enforcement facilities reported by multiple sources.
- (28) Parks and Recreational Facilities - Identifies parks and recreational facilities reported by multiple sources.
- (29) Religious Center Facilities - Identifies religious centers including churches, temples, synagogues, mosques, chapels, centers, and other types of religious facilities reported by multiple sources.
- (30) Private and Public Schools - Identifies private and public schools reported by multiple sources.
- (31) Social Service Centers - Identifies social service centers reported by multiple sources.
- (32) Veteran Organizations and Facilities

Miami-dade County Demographic Profile

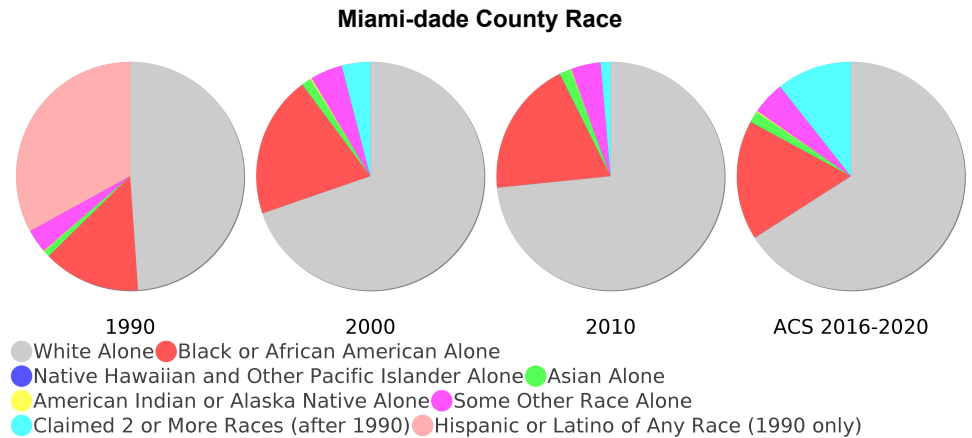
General Population Trends - Miami-dade

Description	1990	2000	2010 ¹	ACS 2016-2020
Total Population	1,937,094	2,253,362	2,445,374	2,705,528
Total Households	692,355	776,774	827,556	902,200
Average Persons per Acre	1.528	1.774	1.925	2.13
Average Persons per Household	2.798	2.84	3.00	2.95
Average Persons per Family	3.413	3.488	3.591	3.71
Males	928,411	1,086,558	1,182,784	1,315,460
Females	1,008,683	1,166,804	1,262,590	1,390,068



Race and Ethnicity Trends - Miami-dade

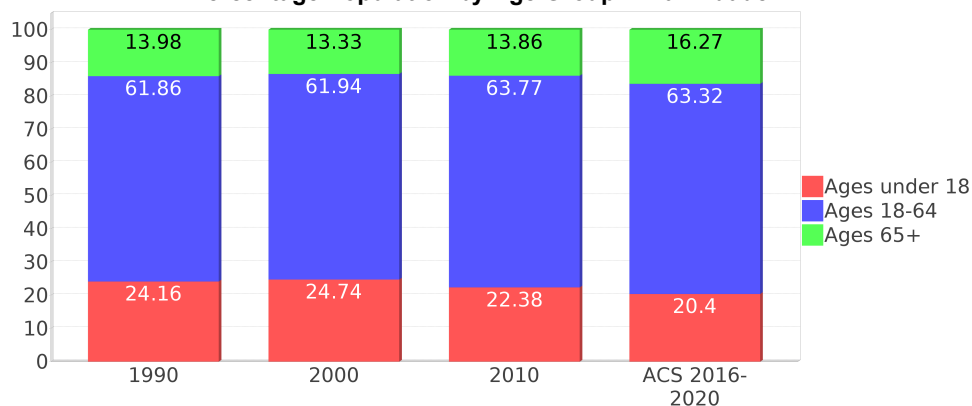
Description	1990	2000	2010 ¹	ACS 2016-2020
White Alone	1,413,015 (72.95%)	1,570,990 (69.72%)	1,794,730 (73.39%)	1,783,928 (65.94%)
Black or African American Alone	397,993 (20.55%)	452,333 (20.07%)	470,326 (19.23%)	457,814 (16.92%)
Native Hawaiian and Other Pacific Islander Alone	(NA)	605 (0.03%)	649 (0.03%)	869 (0.03%)
Asian Alone	25,869 (1.34%)	30,692 (1.36%)	38,813 (1.59%)	43,192 (1.60%)
American Indian or Alaska Native Alone	3,066 (0.16%)	4,841 (0.21%)	3,572 (0.15%)	5,273 (0.19%)
Some Other Race Alone	96,713 (4.99%)	102,436 (4.55%)	102,938 (4.21%)	125,840 (4.65%)
Claimed 2 or More Races	(NA)	91,465 (4.06%)	34,346 (1.40%)	288,612 (10.67%)
Hispanic or Latino of Any Race	953,407 (49.22%)	1,291,681 (57.32%)	1,565,410 (64.02%)	1,843,676 (68.14%)
Not Hispanic or Latino	983,687 (50.78%)	961,681 (42.68%)	879,964 (35.98%)	861,852 (31.86%)
Minority	1,351,487 (69.77%)	1,787,468 (79.32%)	2,112,884 (86.40%)	2,339,622 (86.48%)



Age Trends - Miami-dade

Description	1990	2000	2010 ¹	ACS 2016-2020
Under Age 5	7.21%	6.43%	6.20%	5.80%
Ages 5-17	16.95%	18.31%	16.18%	14.60%
Ages 18-21	5.60%	5.24%	5.83%	4.79%
Ages 22-29	13.10%	10.97%	10.98%	10.71%
Ages 30-39	16.06%	16.33%	14.14%	13.84%
Ages 40-49	12.47%	14.49%	15.67%	14.23%
Ages 50-64	14.63%	14.90%	17.15%	19.76%
Age 65 and Over	13.98%	13.33%	13.86%	16.27%
-Ages 65-74	7.54%	7.23%	7.34%	8.68%
-Ages 75-84	4.88%	4.41%	4.71%	5.16%
-Age 85 and Over	1.55%	1.69%	1.81%	2.44%
Median Age	NA	36	38	40.2

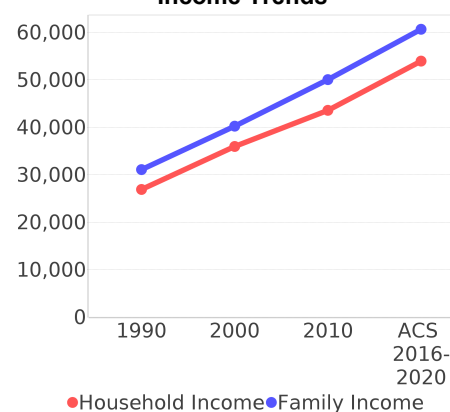
Percentage Population by Age Group - Miami-dade



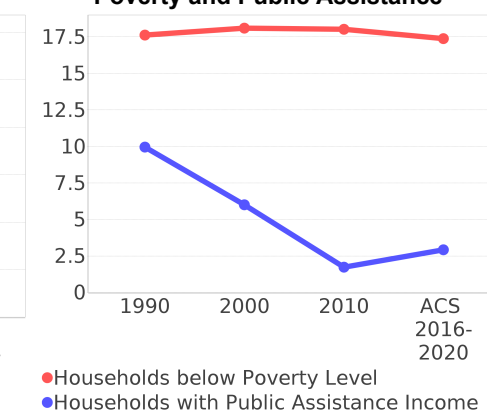
Income Trends - Miami-dade

Description	1990	2000	2010 ¹	ACS 2016-2020
Median Household Income	\$26,909	\$35,966	\$43,605	\$53,975
Median Family Income	\$31,113	\$40,260	\$50,065	\$60,666
Population below Poverty Level	17.94%	17.97%	17.18%	16.01%
Households below Poverty Level	17.62%	18.10%	18.02%	17.38%
Households with Public Assistance Income	9.96%	6.01%	1.74%	2.93%

Income Trends



Poverty and Public Assistance



Disability Trends - Miami-dade

See the Data Sources section below for an explanation about the differences in disability data among the various years.

Description	1990	2000	2010 ¹	ACS 2016-2020
Population 16 To 64 Years with a disability	78,949 (5.28%)	324,062 (15.60%)	NA (NA)	NA (NA)
Population 20 To 64 Years with a disability	NA (NA)	NA (NA)	NA (NA)	109,429 (6.70%)

Educational Attainment Trends - Miami-dade

Age 25 and Over

Description	1990	2000	2010 ¹	ACS 2016-2020
Less than 9th Grade	228,426 (17.83%)	219,066 (14.68%)	202,413 (12.23%)	178,065 (9.25%)
9th to 12th Grade, No Diploma	219,856 (17.16%)	260,287 (17.45%)	178,335 (10.77%)	171,699 (8.92%)
High School Graduate or Higher	833,013 (65.01%)	1,012,436 (67.87%)	1,274,809 (77.00%)	1,576,177 (81.84%)
Bachelor's Degree or Higher	240,460 (18.77%)	323,399 (21.68%)	434,574 (26.25%)	590,305 (30.65%)

Language Trends - Miami-dade

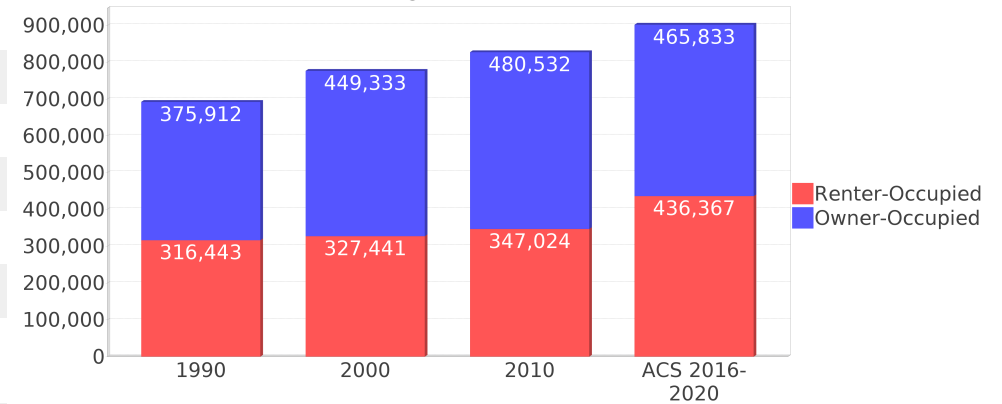
Age 5 and Over

Description	1990	2000	2010 ¹	ACS 2016-2020
Speaks English Well	221,943 (12.34%)	285,783 (13.55%)	302,397 (13.18%)	340,210 (13.35%)
Speaks English Not Well	NA (NA)	261,782 (12.42%)	294,777 (12.85%)	322,484 (12.65%)
Speaks English Not at All	NA (NA)	184,249 (8.74%)	217,650 (9.49%)	217,705 (8.54%)
Speaks English Not Well or Not at All	341,005 (18.96%)	446,031 (21.15%)	512,427 (22.34%)	540,189 (21.20%)
Speaks English Less than Very Well	NA (NA)	731,814 (34.71%)	814,824 (35.52%)	880,399 (34.55%)

Housing Trends - Miami-dade

Description	1990	2000	2010 ¹	ACS 2016-2020
Total	771,288	852,278	980,580	1,032,310
Units per Acre	0.608	0.671	0.772	0.81
Single-Family Units	365,600	448,569	508,364	511,392
Multi-Family Units	301,870	387,550	457,465	507,581
Mobile Home Units	15,359	15,338	14,234	12,890
Owner-Occupied Units	375,912	449,333	480,532	465,833
Renter-Occupied Units	316,443	327,441	347,024	436,367
Vacant Units	78,933	75,504	153,024	130,110
Median Housing Value	\$86,000	\$113,200	\$269,600	\$310,700
Occupied Housing Units w/No Vehicle	110,809 (16.00%)	111,323 (14.33%)	91,558 (11.06%)	90,752 (10.06%)
Median year householder moved into unit - Total	NA	NA	NA	2012
Median year householder moved into unit - Owner Occupied	NA	NA	NA	2005
Median year householder moved into unit - Renter Occupied	NA	NA	NA	2015
Abroad 1 year ago	NA	NA	NA	45,317
Different house in United States 1 year ago	NA	NA	NA	271,359
Same house 1 year ago	NA	NA	NA	2,359,939
Geographical Mobility in the Past Year - Total	NA	NA	NA	2,359,939

Housing Tenure - Miami-dade



County Data Sources

ACS vs Census Data

(1) The 2010 Census data is represented by a combination of decennial and ACS (2006-2010) data. The General Population Trends, Race and Ethnicity Trends, Age Trends are entirely from decennial. The Income Trends, Language Trends are entirely from the ACS. The Housing Trends section is derived from both: Decennial (Total # Housing Units, Housing Units per Acre, Owner-Occupied Units, Renter-Occupied Units, Vacant Units); ACS (Single Family Units, Multi-family Units, Mobile Homes, Median Housing Value, Occupied Housing Units w/No Vehicle).

About the Census Data

(34) Use caution when comparing the 100% count data (Decennial Census) to the sample-based data (ACS). In any given year, about one in 40 U.S. households will receive the ACS questionnaire. Over any five-year period, about one in eight households will receive the questionnaire, as compared to about one in six that received the long form questionnaire for the Decennial Census 2000. (Source: https://www.census.gov/content/dam/Census/programs-surveys/acs/news/10ACS_keyfacts.pdf) The U.S. Census Bureau provides help with this process: <https://www.census.gov/programs-surveys/acs/guidance/comparing-acs-data.html>

(35) Use caution when interpreting changes in race and ethnicity over time. Starting with the 2000 Decennial Census, respondents were given a new option of selecting one or more race categories. Also in 2000, the placement of the question about Hispanic origin changed, helping to increase responsiveness to the Hispanic-origin question. Because of these and other changes, the 1990 data on race and ethnicity are not directly comparable with data from later censuses. (Source: <http://www.census.gov/prod/2001pubs/c2kbr01-1.pdf>; [http://www.census.gov/pred/www/rpts/Race and Ethnicity FINAL report.pdf](http://www.census.gov/pred/www/rpts/Race%20and%20Ethnicity%20FINAL%20report.pdf))

(36) The "Minority" calculations are derived from Census and ACS data using both the race and ethnicity responses. On this report, "Minority" refers to individuals who list a race other than White and/or list their ethnicity as Hispanic/Latino. In other words, people who are multi-racial, any single race other than White, or Hispanic/Latino of any race are considered minorities.

(37) Disability data is not included in the 2010 Decennial Census or the 2006-2010 ACS. This data is available in the ACS 2016-2020 ACS. Because of changes made to the Census and ACS questions between 1990 and ACS, disability variables should not be compared from year to year. For example: 1) with the 1990 data, the disabilities are listed as a "work disability" while this distinction is not made with 2000 or ACS data; 2) the ACS data includes the institutionalized population (e.g. persons in prisons and group homes) while this population is not included in 1990 or 2000; and 3) the age groupings changed over the years.

(38) The category Bachelor's Degree or Higher under the heading Educational Attainment Trends is a subset of the category High School Graduate or Higher.

Metadata

- (39) Community and Fraternal Centers https://etdmpub.florida-estat.org/meta/gc_communitycenter.xml
- (40) Correctional Facilities in Florida https://etdmpub.florida-estat.org/meta/gc_correctional.xml
- (41) Cultural Centers in Florida https://etdmpub.florida-estat.org/meta/gc_culturecenter.xml
- (42) Fire Department and Rescue Station Facilities in Florida https://etdmpub.florida-estat.org/meta/gc_firestat.xml
- (43) Local, State, and Federal Government Buildings in Florida https://etdmpub.florida-estat.org/meta/gc_govbuild.xml
- (44) Florida Health Care Facilities https://etdmpub.florida-estat.org/meta/gc_health.xml
- (45) Hospital Facilities in Florida https://etdmpub.florida-estat.org/meta/gc_hospitals.xml
- (46) Law Enforcement Facilities in Florida https://etdmpub.florida-estat.org/meta/gc_lawenforce.xml
- (47) Florida Parks and Recreational Facilities https://etdmpub.florida-estat.org/meta/gc_parks.xml
- (48) Religious Centers https://etdmpub.florida-estat.org/meta/gc_religion.xml
- (49) Florida Public and Private Schools https://etdmpub.florida-estat.org/meta/gc_schools.xml
- (50) Social Service Centers https://etdmpub.florida-estat.org/meta/gc_socialservice.xml
- (51) Assisted Rental Housing Units in Florida https://etdmpub.florida-estat.org/meta/gc_assisted_housing.xml
- (52) Group Care Facilities <https://etdmpub.florida-estat.org/meta/groupcare.xml>
- (53) Mobile Home Parks in Florida https://etdmpub.florida-estat.org/meta/gc_mobilehomes.xml
- (54) Migrant Camps in Florida <https://etdmpub.florida-estat.org/meta/migrant.xml>
- (55) Veteran Organizations and Facilities https://etdmpub.florida-estat.org/meta/gc_veterans.xml
- (56) Generalized Land Use https://etdmpub.florida-estat.org/meta/lu_gen.xml
- (57) Census Block Groups in Florida https://etdmpub.florida-estat.org/meta/e2_cenacs_cci.xml
- (58) 1990 Census Block Groups in Florida https://etdmpub.florida-estat.org/meta/e2_cenblkgrp_1990_cci.xml
- (59) 2000 Census Block Groups in Florida https://etdmpub.florida-estat.org/meta/e2_cenblkgrp_2000_cci.xml
- (60) 2010 Census Block Groups in Florida https://etdmpub.florida-estat.org/meta/e2_cenblkgrp_2010_cci.xml