

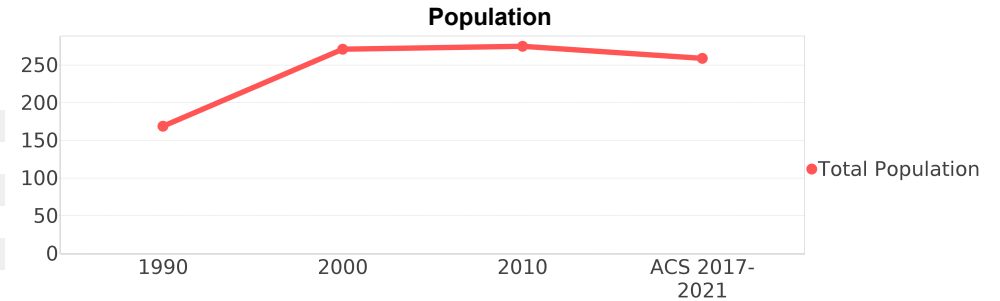
## Berrydale (CDP)

Area: [2](#) 8.651 square miles  
 Jurisdiction - Cities: [3](#) NA  
 Jurisdiction - Counties: [3](#) Santa rosa



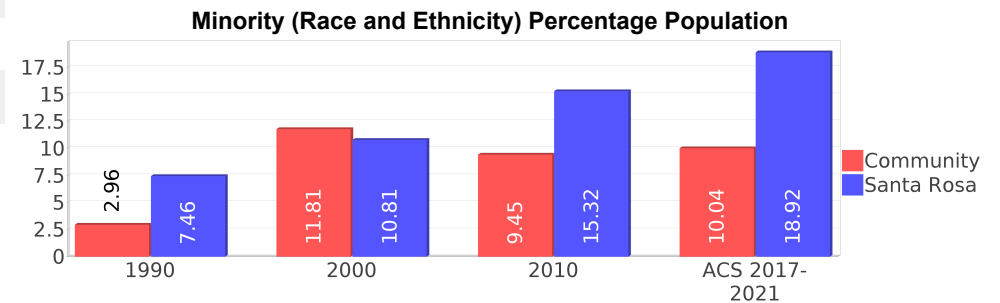
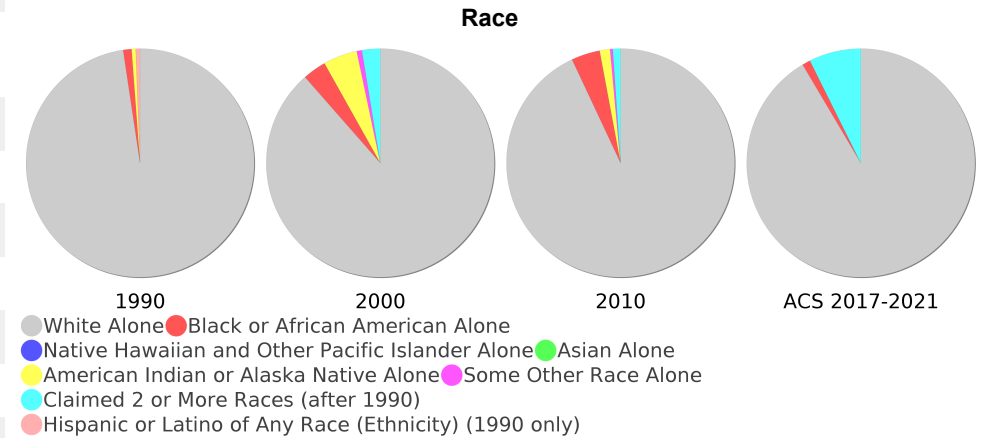
### General Population Trends

Description	1990	2000	2010 <sup>1</sup>	ACS 2017-2021
Total Population	169	271	275	259
Total Households	61	94	98	77
Average Persons per Acre	0.03	0.05	0.05	0.04
Average Persons per Household	2.77	2.62	3.00	3.04
Average Persons per Family	3.14	3.13	3.00	3.39
Males	86	144	147	132
Females	82	127	127	126



### Race and Ethnicity Trends <sup>5, 8, 9</sup>

Description	1990	2000	2010 <sup>1</sup>	ACS 2017-2021
White Alone	164 (97.04%)	239 (88.19%)	253 (92.00%)	236 (91.12%)
Black or African American Alone	2 (1.18%)	9 (3.32%)	11 (4.00%)	3 (1.16%)
Native Hawaiian and Other Pacific Islander Alone	0 (0.00%)	0 (0.00%)	0 (0.00%)	0 (0.00%)
Asian Alone	0 (0.00%)	0 (0.00%)	0 (0.00%)	0 (0.00%)
American Indian or Alaska Native Alone	1 (0.59%)	13 (4.80%)	4 (1.45%)	0 (0.00%)
Some Other Race Alone	0 (0.00%)	2 (0.74%)	1 (0.36%)	0 (0.00%)
Claimed 2 or More Races	NA (NA)	7 (2.58%)	3 (1.09%)	19 (7.34%)
Hispanic or Latino of Any Race (Ethnicity)	1 (0.59%)	2 (0.74%)	6 (2.18%)	4 (1.54%)
Not Hispanic or Latino (Ethnicity)	168 (99.41%)	269 (99.26%)	269 (97.82%)	255 (98.46%)
Minority (Race and Ethnicity)	5 (2.96%)	32 (11.81%)	26 (9.45%)	26 (10.04%)



## Age Trends <sup>5</sup>

Description	1990	2000	2010 <sup>1</sup>	ACS 2017-2021
Under Age 5	5.33%	7.38%	5.09%	5.79%
Ages 5-17	20.12%	19.56%	17.45%	20.46%
Ages 18-21	5.92%	4.80%	4.36%	0.39%
Ages 22-29	10.06%	11.81%	10.18%	10.04%
Ages 30-39	14.79%	18.45%	11.27%	11.20%
Ages 40-49	12.43%	12.92%	15.64%	11.58%
Ages 50-64	14.79%	12.18%	21.09%	22.78%
Age 65 and Over	13.61%	11.81%	13.82%	16.99%
-Ages 65-74	7.69%	7.75%	8.00%	10.81%
-Ages 75-84	4.14%	3.32%	4.36%	5.41%
-Age 85 and Over	0.59%	0.37%	0.73%	0.00%
Median Age	NA	36	40	42

## Income Trends <sup>12, 13, 5</sup>

Description	1990	2000	2010 <sup>1</sup>	ACS 2017-2021
Median Household Income	\$23,027	\$26,500	\$46,728	\$75,652
Median Family Income	\$24,850	\$37,417	\$53,882	\$80,828
Population below Poverty Level	20.12%	20.30%	13.09%	15.83%
Households below Poverty Level	21.31%	23.40%	14.29%	9.09%
Households with Public Assistance Income	11.48%	3.19%	3.06%	0.00%

## Disability Trends <sup>10</sup>

See the [Data Sources](#) section below for an explanation about the differences in disability data among the various years.

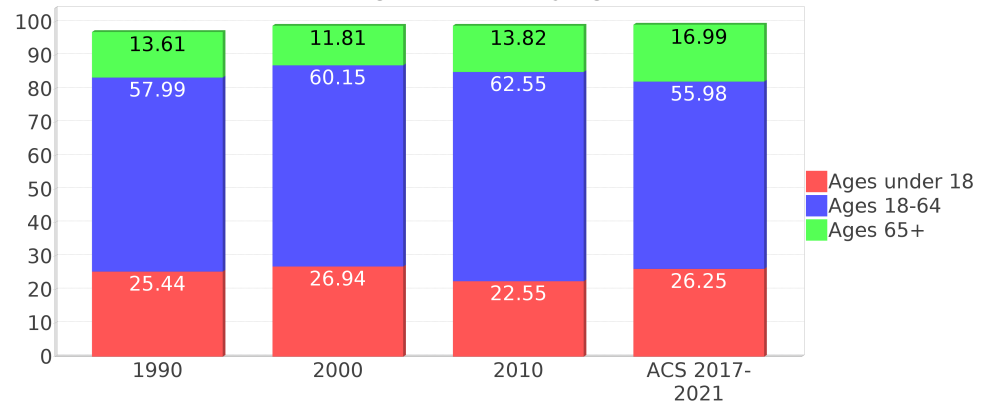
Description	1990	2000	2010 <sup>1</sup>	ACS 2017-2021
Population 16 To 64 Years with a disability	16 (11.94%)	41 (18.06%)	(NA)	(NA)
Population 20 To 64 Years with a disability	(NA)	(NA)	(NA)	40 (28.37%)

## Educational Attainment Trends <sup>11, 5</sup>

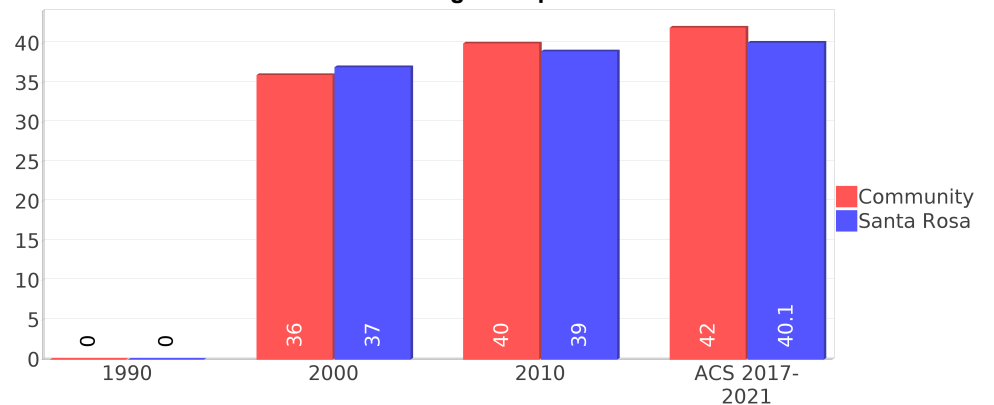
Age 25 and Over

Description	1990	2000	2010 <sup>1</sup>	ACS 2017-2021
Less than 9th Grade	20 (16.81%)	12 (6.94%)	14 (8.09%)	5 (2.69%)
9th to 12th Grade, No Diploma	20 (16.81%)	43 (24.86%)	28 (16.18%)	20 (10.75%)
High School Graduate or Higher	78 (65.55%)	117 (67.63%)	130 (75.14%)	160 (86.02%)
Bachelor's Degree or Higher	11 (9.24%)	10 (5.78%)	20 (11.56%)	22 (11.83%)

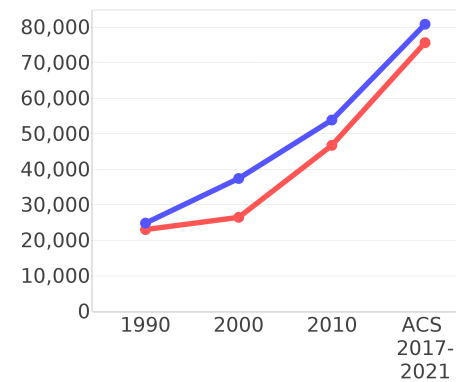
Percentage Population by Age Group



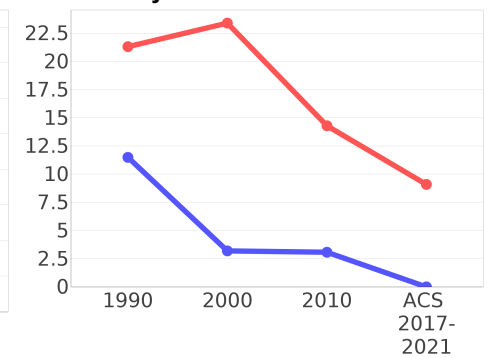
Median Age Comparison



Income Trends



Poverty and Public Assistance



## Language Trends <sup>5</sup>

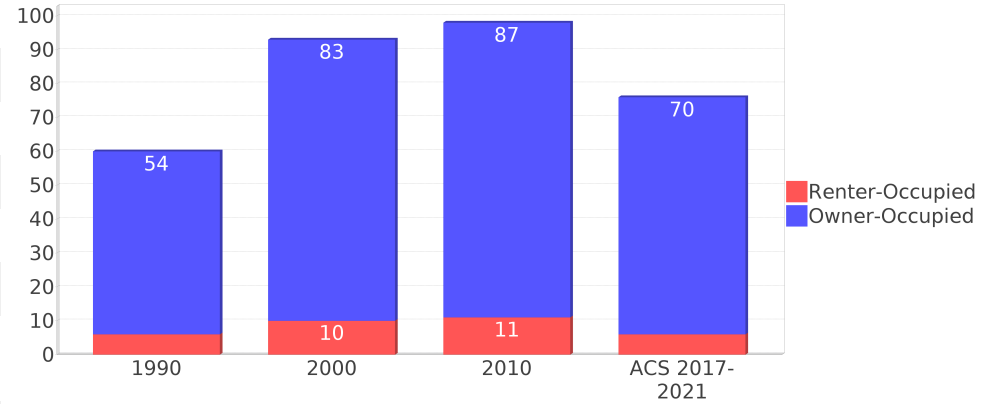
Age 5 and Over

Description	1990	2000	2010 <sup>1</sup>	ACS 2017-2021
Speaks English Well	0 (0.00%)	1 (0.40%)	2 (0.82%)	0 (0.00%)
Speaks English Not Well	NA (NA)	0 (0.00%)	0 (0.00%)	0 (0.00%)
Speaks English Not at All	NA (NA)	0 (0.00%)	0 (0.00%)	0 (0.00%)
Speaks English Not Well or Not at All	0 (0.00%)	0 (0.00%)	0 (0.00%)	0 (0.00%)
Speaks English Less than Very Well	NA (NA)	1 (0.40%)	2 (0.82%)	0 (0.00%)

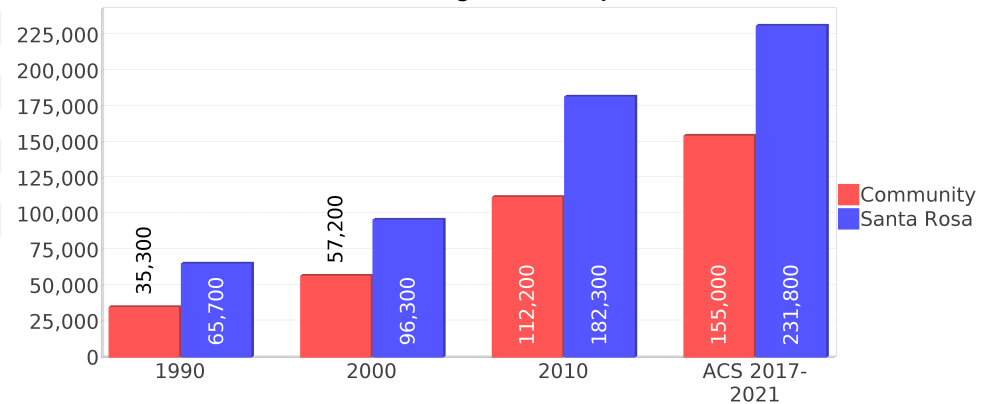
## Housing Trends <sup>5</sup>

Description	1990	2000	2010 <sup>1</sup>	ACS 2017-2021
Total	68	105	115	108
Units per Acre	0.01	0.02	0.02	0.02
Single-Family Units	45	66	62	93
Multi-Family Units	0	0	4	0
Mobile Home Units	14	39	41	14
Owner-Occupied Units	54	83	87	70
Renter-Occupied Units	6	10	11	6
Vacant Units	7	11	16	30
Median Housing Value	\$35,300	\$57,200	\$112,200	\$155,000
Occupied Housing Units w/No Vehicle	5 (8.20%)	7 (7.45%)	12 (12.12%)	0 (0.00%)

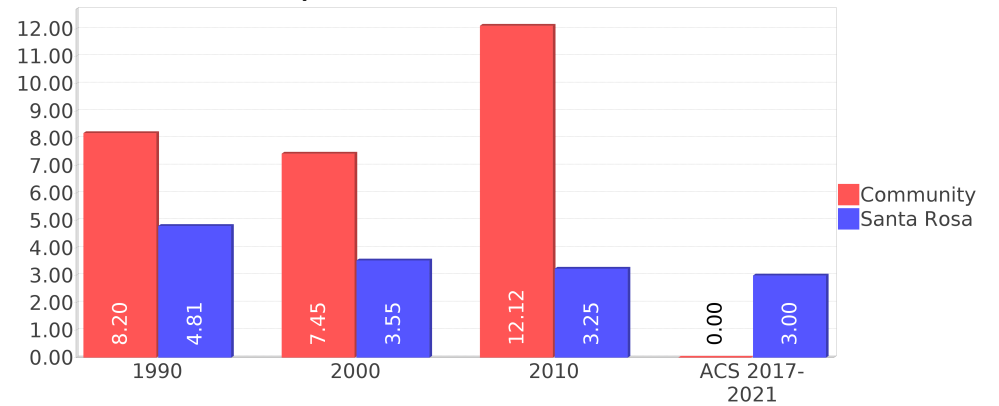
## Housing Tenure



## Median Housing Value Comparison



## Occupied Units With No Vehicles Available



## Geographic Mobility

Description	ACS 2017-2021
Median year householder moved into unit - Total	2004
Median year householder moved into unit - Owner Occupied	2003
Median year householder moved into unit - Renter Occupied	1006
Abroad 1 year ago	0
Different house in United States 1 year ago	19
Same house 1 year ago	236
Geographical Mobility in the Past Year - Total	256

## Computers and Internet

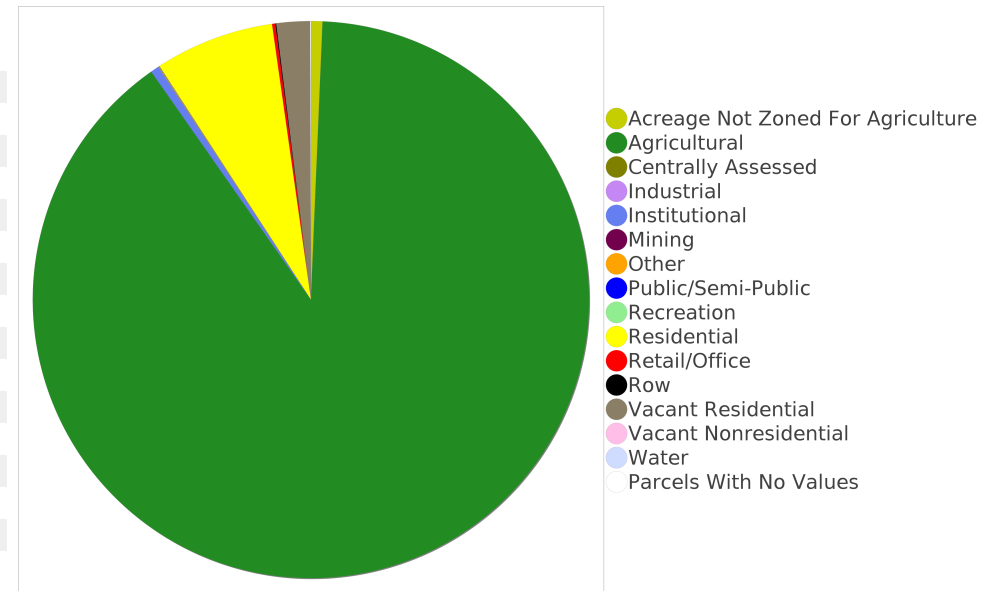
Description	ACS 2017-2021
Total Households Types of Computers in HH	77
Households with 1 or more device	67
Households with no computer	9
Total Households Presence and Types of Internet Subscriptions	77
Households with an internet subscription	60
Households with internet access without a subscription	0
Households with no internet access	16

## Household Languages

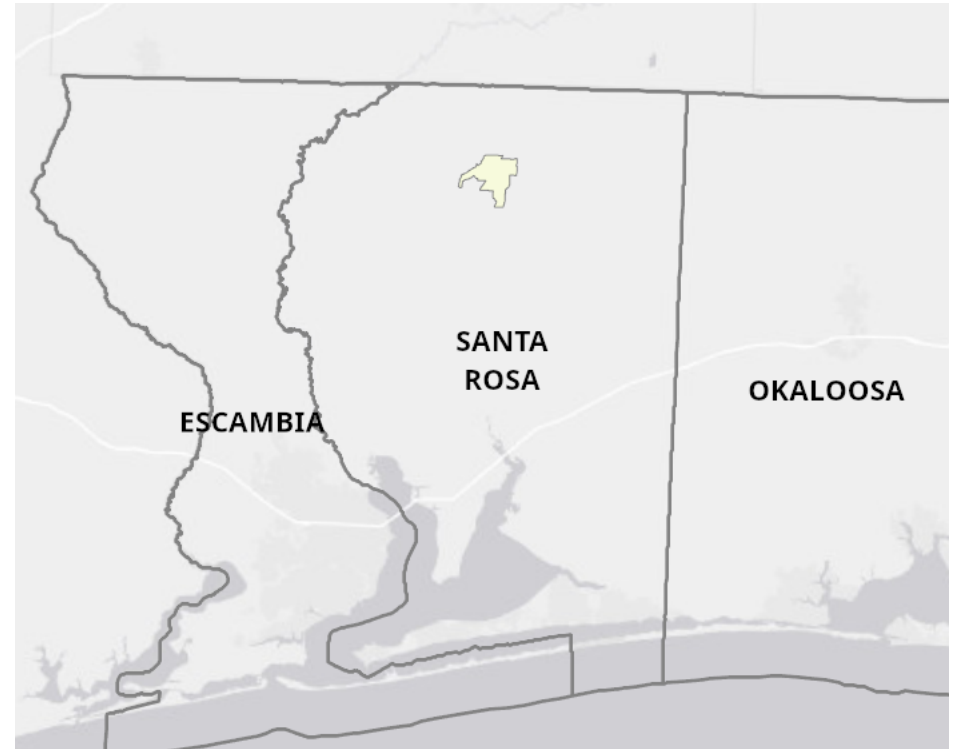
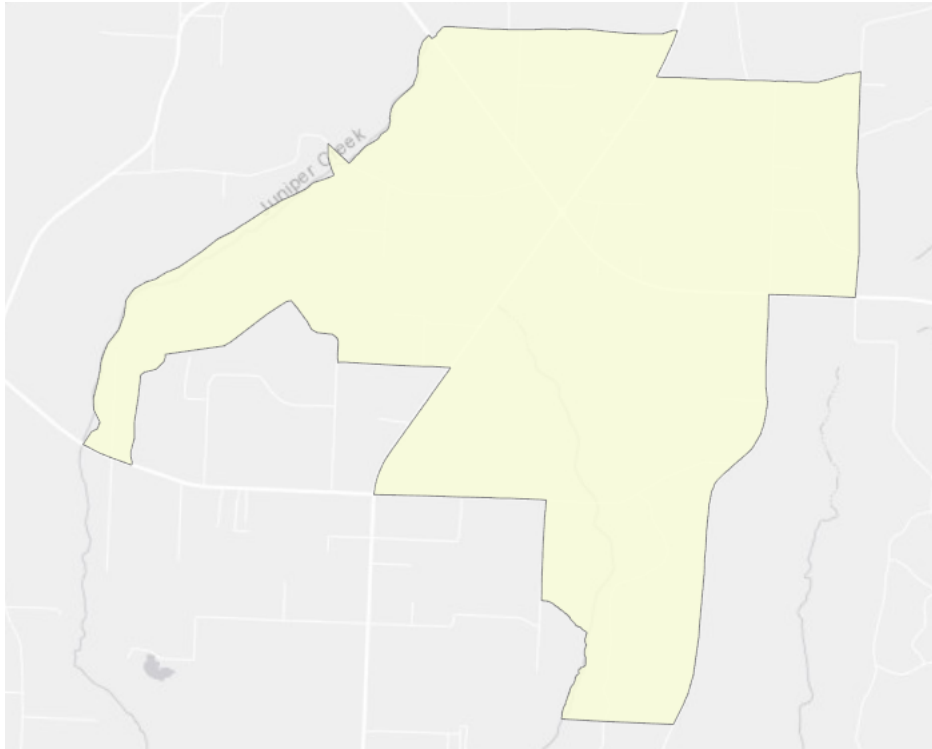
Description	ACS 2017-2021
Total Households by Household Language	77
Household Not Limited English Speaking Status	77
Spanish: Limited English speaking household	0
Indo-European languages: Limited English speaking household	0
Asian and Pacific Island languages: Limited English speaking household	0
Other languages: Limited English speaking household	0

## Existing Land Use <sup>15</sup>

Land Use Type	Acres	Percentage
Acreage Not Zoned For Agriculture	36	0.65%
Agricultural	4,851	87.62%
Centrally Assessed	0	0.00%
Industrial	<0.5	<0.01%
Institutional	27	0.49%
Mining	0	0.00%
Other	2	0.04%
Public/Semi-Public	1	0.02%
Recreation	1	0.02%
Residential	375	6.77%
Retail/Office	10	0.18%
Row	3	0.05%
Vacant Residential	105	1.90%
Vacant Nonresidential	<0.5	<0.01%
Water	0	0.00%
Parcels With No Values	3	0.05%



## Location Maps



## Community Facilities

The community facilities information below is useful in a variety of ways for environmental evaluations. These community resources should be evaluated for potential sociocultural effects, such as accessibility and relocation potential. The facility types may indicate the types of population groups present in the project study area. Facility staff and leaders can be sources of community information such as who uses the facility and how it is used. Additionally, community facilities are potential public meeting venues.

### Correctional Facilities

Facility Name	Address	Zip Code
BERRYDALE FORESTRY CAMP	6920 STATE HWY 4	32570

### Fire Department and Rescue Station Facilities

Facility Name	Address	Zip Code
BERRYDALE VOLUNTEER FIRE DEPARTMENT STATION 14	13000 HIGHWAY 87 N	32565

### Religious Centers

Facility Name	Address	Zip Code
TRUE WORSHIP ASSEMBLY OF GOD	13267 HWY 87 N	32565
CROSSROADS CHURCH	12929 HWY 87 N	32565
BERRYDALE BAPTIST CHURCH	6730 HIGHWAY 4	32565
PINE GROVE BAPTIST CHURCH	7280 PINE GROVE RD	32565

## Block Groups

The following Census Block Groups were used to calculate demographics for this report.

### 1990 Census Block Groups

121130101001

### 2000 Census Block Groups

121130101001

### 2010 Census Block Groups

121130101001

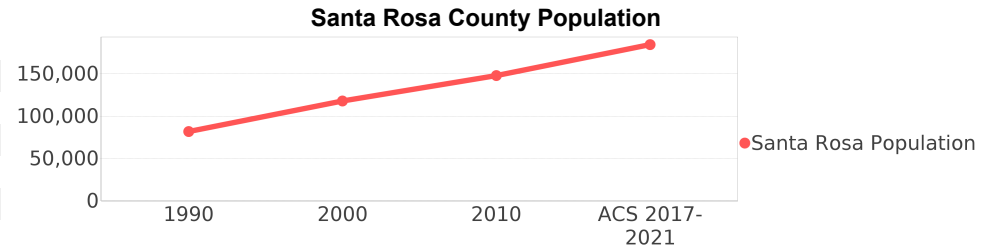
### Census Block Groups

121130101003, 121130101004

# Santa Rosa County Demographic Profile

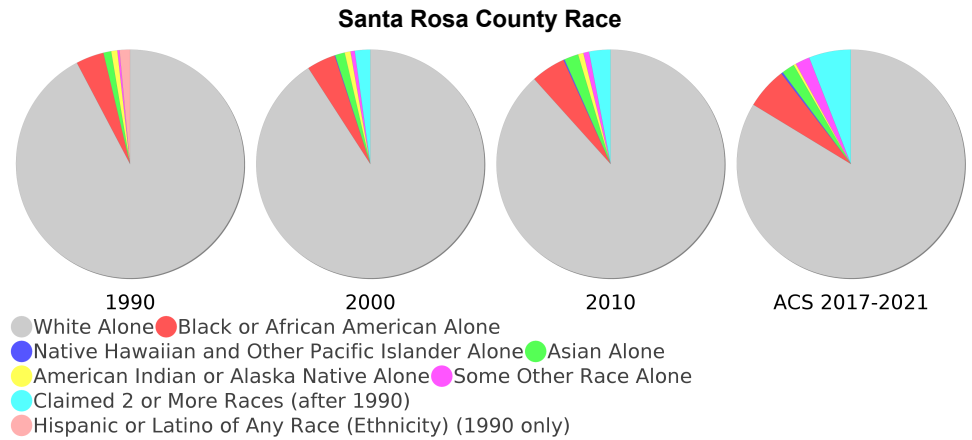
## General Population Trends - Santa Rosa <sup>5</sup>

Description	1990	2000	2010 <sup>1</sup>	ACS 2017-2021
Total Population	81,608	117,743	147,838	184,345
Total Households	29,900	43,793	54,860	67,534
Average Persons per Acre	0.125	0.18	0.225	0.28
Average Persons per Household	2.729	2.627	3.00	2.64
Average Persons per Family	3.10	3.05	3.08	3.13
Males	40,644	59,153	74,289	94,610



## Race and Ethnicity Trends - Santa Rosa <sup>5, 8, 9</sup>

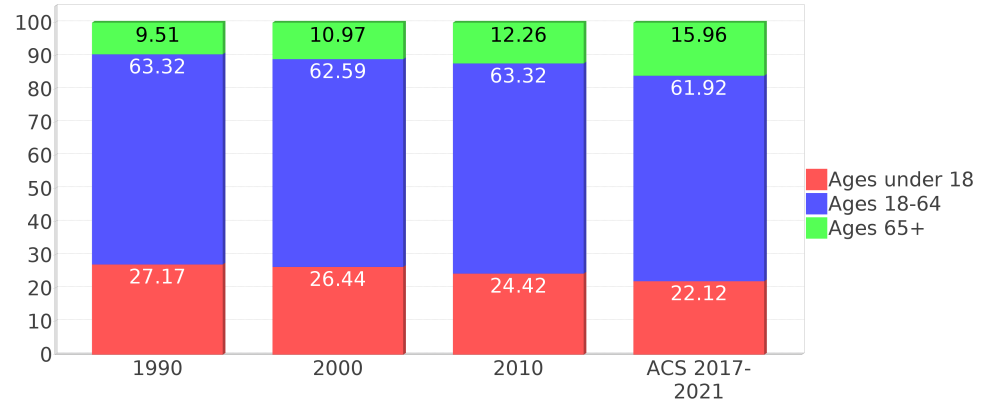
Description	1990	2000	2010 <sup>1</sup>	ACS 2017-2021
White Alone	76,385 (93.60%)	106,976 (90.86%)	130,575 (88.32%)	154,250 (83.67%)
Black or African American Alone	3,275 (4.01%)	4,777 (4.06%)	7,229 (4.89%)	10,831 (5.88%)
Native Hawaiian and Other Pacific Islander Alone	(NA)	111 (0.09%)	248 (0.17%)	481 (0.26%)
Asian Alone	911 (1.12%)	1,608 (1.37%)	2,987 (2.02%)	3,383 (1.84%)
American Indian or Alaska Native Alone	715 (0.88%)	1,006 (0.85%)	1,112 (0.75%)	647 (0.35%)
Some Other Race Alone	260 (0.32%)	678 (0.58%)	1,207 (0.82%)	3,777 (2.05%)
Claimed 2 or More Races	(NA)	2,587 (2.20%)	4,480 (3.03%)	10,976 (5.95%)
Hispanic or Latino of Any Race (Ethnicity)	1,223 (1.50%)	2,821 (2.40%)	6,061 (4.10%)	11,000 (5.97%)
Not Hispanic or Latino (Ethnicity)	80,385 (98.50%)	114,922 (97.60%)	141,777 (95.90%)	173,345 (94.03%)
Minority (Race and Ethnicity)	6,089 (7.46%)	12,727 (10.81%)	22,646 (15.32%)	34,875 (18.92%)



## Age Trends - Santa Rosa <sup>5</sup>

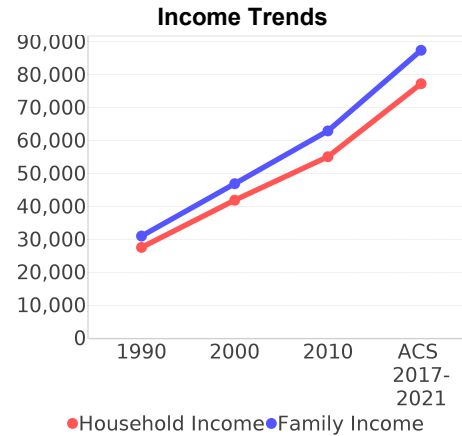
Description	1990	2000	2010 <sup>1</sup>	ACS 2017-2021
Under Age 5	7.81%	6.60%	6.10%	5.51%
Ages 5-17	19.36%	19.84%	18.33%	16.61%
Ages 18-21	5.14%	4.21%	4.87%	4.28%
Ages 22-29	13.13%	8.99%	9.59%	9.94%
Ages 30-39	17.23%	16.69%	13.25%	13.54%
Ages 40-49	13.57%	16.20%	16.25%	13.29%
Ages 50-64	14.26%	16.51%	19.37%	20.87%
Age 65 and Over	9.51%	10.97%	12.26%	15.96%
-Ages 65-74	6.14%	7.04%	7.61%	9.94%
-Ages 75-84	2.68%	2.98%	3.78%	4.57%
-Age 85 and Over	0.69%	0.96%	0.87%	1.45%
Median Age	NA	37	39	40.1

Percentage Population by Age Group - Santa Rosa

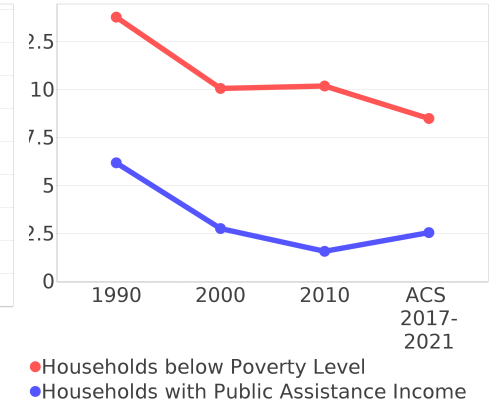


## Income Trends - Santa Rosa <sup>5</sup>

Description	1990	2000	2010 <sup>1</sup>	ACS 2017-2021
Median Household Income	\$27,584	\$41,881	\$55,129	\$77,260
Median Family Income	\$31,033	\$46,929	\$62,929	\$87,427
Population below Poverty Level	14.16%	9.83%	11.35%	8.84%
Households below Poverty Level	13.78%	10.06%	10.19%	8.50%
Households with Public Assistance Income	6.19%	2.76%	1.57%	2.55%



Poverty and Public Assistance



## Disability Trends - Santa Rosa <sup>10</sup>

See the Data Sources section below for an explanation about the differences in disability data among the various years.

Description	1990	2000	2010 <sup>1</sup>	ACS 2017-2021
Population 16 To 64 Years with a disability	5,795 (9.92%)	15,251 (14.56%)	NA (NA)	NA (NA)
Population 20 To 64 Years with a disability	NA (NA)	NA (NA)	NA (NA)	13,165 (12.54%)

## Educational Attainment Trends - Santa Rosa <sup>11, 5</sup>

Age 25 and Over

Description	1990	2000	2010 <sup>1</sup>	ACS 2017-2021
Less than 9th Grade	3,996 (7.70%)	3,120 (3.99%)	3,238 (3.26%)	2,294 (1.77%)
9th to 12th Grade, No Diploma	7,186 (13.84%)	8,265 (10.57%)	8,338 (8.38%)	7,698 (5.95%)
High School Graduate or Higher	40,740 (78.46%)	66,781 (85.43%)	87,874 (88.36%)	119,484 (92.28%)
Bachelor's Degree or Higher	9,653 (18.59%)	17,881 (22.88%)	24,610 (24.75%)	37,741 (29.15%)

## Language Trends - Santa Rosa <sup>5</sup>

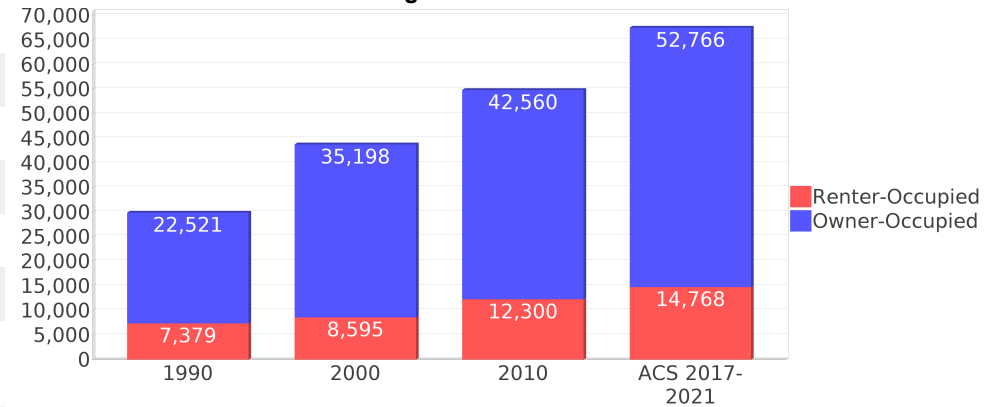
Age 5 and Over

Description	1990	2000	2010 <sup>1</sup>	ACS 2017-2021
Speaks English Well	581 (0.77%)	1,062 (0.97%)	1,968 (1.42%)	2,080 (1.19%)
Speaks English Not Well	NA (NA)	550 (0.50%)	1,018 (0.73%)	1,052 (0.60%)
Speaks English Not at All	NA (NA)	57 (0.05%)	260 (0.19%)	141 (0.08%)
Speaks English Not Well or Not at All	325 (0.43%)	607 (0.55%)	1,278 (0.92%)	1,193 (0.68%)
Speaks English Less than Very Well	NA (NA)	1,669 (1.52%)	3,246 (2.34%)	3,273 (1.88%)

## Housing Trends - Santa Rosa <sup>5</sup>

Description	1990	2000	2010 <sup>1</sup>	ACS 2017-2021
Total	32,831	49,119	63,059	74,878
Units per Acre	0.05	0.075	0.096	0.11
Single-Family Units	21,487	35,967	48,174	61,413
Multi-Family Units	2,620	4,510	6,631	6,710
Mobile Home Units	5,639	8,586	8,105	6,665
Owner-Occupied Units	22,521	35,198	42,560	52,766
Renter-Occupied Units	7,379	8,595	12,300	14,768
Vacant Units	2,931	5,326	8,199	7,344
Median Housing Value	\$65,700	\$96,300	\$182,300	\$231,800
Occupied Housing Units w/No Vehicle	1,439 (4.81%)	1,553 (3.55%)	1,783 (3.25%)	2,029 (3.00%)
Median year householder moved into unit - Total	NA	NA	NA	2013
Median year householder moved into unit - Owner Occupied	NA	NA	NA	2011
Median year householder moved into unit - Renter Occupied	NA	NA	NA	2017
Abroad 1 year ago	NA	NA	NA	794
Different house in United States 1 year ago	NA	NA	NA	27,997
Same house 1 year ago	NA	NA	NA	153,319
Geographical Mobility in the Past Year - Total	NA	NA	NA	153,319

## Housing Tenure - Santa Rosa



# Data Sources

## ACS vs Census Data

(1) The 2010 Census data is represented by a combination of decennial and ACS (2006-2010) data. The General Population Trends, Race and Ethnicity Trends, Age Trends are entirely from decennial. The Income Trends, Language Trends are entirely from the ACS. The Housing Trends section is derived from both: Decennial (Total # Housing Units, Housing Units per Acre, Owner-Occupied Units, Renter-Occupied Units, Vacant Units); ACS (Single Family Units, Multi-family Units, Mobile Homes, Median Housing Value, Occupied Housing Units w/No Vehicle).

## Area

(2) The geographic area of the community based on a user-defined community boundary or area of interest (AOI) boundary.

## Jurisdiction

(3) Jurisdiction(s) includes local government boundaries that intersect the user-defined community or AOI boundary.

## Goals, Values and History

(4) Information under the headings Goals and Values and History is entered manually by the user before the Sociocultural Data Report (SDR) is generated. This information is usually not available for communities with boundaries that are based on Census-defined places (i.e., not user-specified).

## Demographic Data

(5) Demographic data reported under the headings General Population Trends, Race and Ethnicity Trends, Age Trends, Income Trends, Educational Attainment Trends, Language Trends, and Housing Trends is from the U.S. Decennial Census for 1990 and 2000 and the American Community Survey (ACS) 5-year estimates for 2006-2010 and ACS 2017-2021. The data was gathered at the block group level for user-defined communities, Census places, and AOIs, and at the county level for counties. Depending on the dataset, the data represents 100% counts (Census Summary File 1) or sample-based information (Census Summary File 3 or ACS). For more information about using demographic data, please see the training videos located here: <https://www.fdot.gov/environment/pubs/sce/sce1.shtm>.

## About the Census Data

(6) The block group analysis for ETDM project analysis areas, user-defined communities, Census places, and AOI boundaries do not always correspond precisely to block group boundaries. To estimate the actual population more accurately, the SDR analysis adjusts the geographic area and data of affected block groups using the following methodology:

Delete overlapping census blocks with extremely low populations (2 or fewer people)  
Remove the portion of the block group that lies outside of the analysis area  
Recalculate the demographics assuming an equal area distribution of the population

Note that there may be areas where there is no population.

(7) Use caution when comparing the 100% count data (Decennial Census) to the sample-based data (ACS). In any given year, about one in 40 U.S. households will receive the ACS questionnaire. Over any five-year period, about one in eight households will receive the questionnaire, as compared to about one in six that received the long form questionnaire for the Decennial Census 2000. (Source: [https://www.census.gov/content/dam/Census/programs-surveys/acs/news/10ACS\\_keyfacts.pdf](https://www.census.gov/content/dam/Census/programs-surveys/acs/news/10ACS_keyfacts.pdf)) The U.S. Census Bureau provides help with this process: <https://www.census.gov/programs-surveys/acs/guidance/comparing-acs-data.html>

(8) Race and ethnicity are separate questions on the Census questionnaire. Individuals can report multiple race and ethnicity answers; therefore, numbers in the Race and Ethnicity portion of this report may add up to be greater than the total population. In addition, use caution when interpreting changes in race and ethnicity over time. Starting with the 2000 Decennial Census, respondents could select one or more race categories. Also in 2000, the placement of the question about Hispanic origin changed, helping to increase responsiveness to the Hispanic-origin question. Because of these and other changes, the 1990 data on race and ethnicity are not directly comparable with data from later censuses. (Source: <https://www.census.gov/library/publications/2001/dec/c2kbr01-01.html>)

(9) The "Minority" calculations use both the race and ethnicity responses from Census and ACS data. In this report, "Minority" refers to individuals who list a race other than White and/or list their ethnicity as Hispanic/Latino. In other words, people who are multi-racial, any single race other than White, or Hispanic/Latino of any race are considered minorities. We use the following formula:  $MINORITY = TOTALPOP - WHITE\_NH$  where TOTALPOP is the Total Population and WHITE\_NH is the population with a race of White alone and an ethnicity of Not Hispanic or Latino. Translating this to the field names used in the census ACS source data, the formula looks like this:  $MINORITY = B01003\_E001 - B03002\_E003$ . (Note, the WHITE\_NH population is not reported separately in this report.)

(10) Disability data is not included in the 2010 Decennial Census or the 2006-2010 ACS. This data is available in the ACS 2017-2021 ACS. Because of changes made to the Census and ACS questions between 1990 and ACS, disability variables should not be compared from year to year. For example: 1) with the 1990 data, the disabilities are listed as a "work disability" while this distinction is not made with 2000 or ACS data; 2) the ACS data includes the institutionalized population (e.g. persons in prisons and group homes) while this population is not included in 1990 or 2000; and 3) the age groupings changed over the years.

(11) The category Bachelor's Degree or Higher under the heading Educational Attainment Trends is a subset of the category High School Graduate or Higher.

(12) Income of households. This includes the income of the householder and all other individuals 15 years old and over in the household, whether they are related to the householder or not. Because many households consist of only one person, average household income is usually less than average family income.

(13) Income of families. In compiling statistics on family income, the incomes of all members 15 years old and over related to the householder are summed and treated as a single amount.

(14) Age trends. The median age for 1990 is not available.

## Land Use Data

(15) The Land Use information Indicates acreages and percentages for the generalized land use types used to group parcel-specific, existing land use assigned by the county property appraiser office according to the Florida Department of Revenue land use codes.

## Community Facilities Data

- (16) Assisted Rental Housing Units - Identifies multifamily rental developments that receive funding assistance under federal, state, and local government programs to offer affordable housing as reported by the Shimberg Center for Housing Studies, University of Florida.
- (17) Mobile Home Parks - Identifies approved or acknowledged mobile home parks reported by the Florida Department of Business and Professional Regulation and Florida Department of Health.
- (18) Migrant Camps - Identifies migrant labor camp facilities inspected by the Florida Department of Health.
- (19) Group Care Facilities - Identifies group care facilities inspected by the Florida Department of Health.
- (20) Community Center and Fraternal Association Facilities - Identifies facilities reported by multiple sources.
- (21) Law Enforcement Correctional Facilities - Identifies facilities reported by multiple sources.
- (22) Cultural Centers - Identifies cultural centers including organizations, buildings, or complexes that promote culture and arts (e.g., aquariums and zoological facilities; arboreta and botanical gardens; dinner theaters; drive-ins; historical places and services; libraries; motion picture theaters; museums and art galleries; performing arts centers; performing arts theaters; planetariums; studios and art galleries; and theater producers stage facilities) reported by multiple sources.
- (23) Fire Department and Rescue Station Facilities - Identifies facilities reported by multiple sources.
- (24) Government Buildings - Identifies local, state, and federal government buildings reported by multiple sources.
- (25) Health Care Facilities - Identifies health care facilities including abortion clinics, dialysis clinics, medical doctors, nursing homes, osteopaths, state laboratories/clinics, and surgicenters/walk-in clinics reported by the Florida Department of Health.
- (26) Hospital Facilities - Identifies hospital facilities reported by multiple sources.
- (27) Law Enforcement Facilities - Identifies law enforcement facilities reported by multiple sources.
- (28) Parks and Recreational Facilities - Identifies parks and recreational facilities reported by multiple sources.
- (29) Religious Center Facilities - Identifies religious centers including churches, temples, synagogues, mosques, chapels, centers, and other types of religious facilities reported by multiple sources.
- (30) Private and Public Schools - Identifies private and public schools reported by multiple sources.
- (31) Social Service Centers - Identifies social service centers reported by multiple sources.
- (32) Veteran Organizations and Facilities

# County Data Sources

## ACS vs Census Data

(1) The 2010 Census data is represented by a combination of decennial and ACS (2006-2010) data. The General Population Trends, Race and Ethnicity Trends, Age Trends are entirely from decennial. The Income Trends, Language Trends are entirely from the ACS. The Housing Trends section is derived from both: Decennial (Total # Housing Units, Housing Units per Acre, Owner-Occupied Units, Renter-Occupied Units, Vacant Units); ACS (Single Family Units, Multi-family Units, Mobile Homes, Median Housing Value, Occupied Housing Units w/No Vehicle).

## About the Census Data

(34) Use caution when comparing the 100% count data (Decennial Census) to the sample-based data (ACS). In any given year, about one in 40 U.S. households will receive the ACS questionnaire. Over any five-year period, about one in eight households will receive the questionnaire, as compared to about one in six that received the long form questionnaire for the Decennial Census 2000. (Source: [https://www.census.gov/content/dam/Census/programs-surveys/acs/news/10ACS\\_keyfacts.pdf](https://www.census.gov/content/dam/Census/programs-surveys/acs/news/10ACS_keyfacts.pdf)) The U.S. Census Bureau provides help with this process: <https://www.census.gov/programs-surveys/acs/guidance/comparing-acs-data.html>

(35) Race and ethnicity are separate questions on the Census questionnaire. Individuals can report multiple race and ethnicity answers; therefore, numbers in the Race and Ethnicity portion of this report may add up to be greater than the total population. In addition, use caution when interpreting changes in race and ethnicity over time. Starting with the 2000 Decennial Census, respondents could select one or more race categories. Also in 2000, the placement of the question about Hispanic origin changed, helping to increase responsiveness to the Hispanic-origin question. Because of these and other changes, the 1990 data on race and ethnicity are not directly comparable with data from later censuses. (Source: <https://www.census.gov/library/publications/2001/dec/c2kbr01-01.html>)

(36) The "Minority" calculations use both the race and ethnicity responses from Census and ACS data. In this report, "Minority" refers to individuals who list a race other than White and/or list their ethnicity as Hispanic/Latino. In other words, people who are multi-racial, any single race other than White, or Hispanic/Latino of any race are considered minorities. We use the following formula:  $MINORITY = TOTALPOP - WHITE\_NH$  where TOTALPOP is the Total Population and WHITE\_NH is the population with a race of White alone and an ethnicity of Not Hispanic or Latino. Translating this to the field names used in the census ACS source data, the formula looks like this:  $MINORITY = B01003\_E001 - B03002\_E003$ . (Note, the WHITE\_NH population is not reported separately in this report.)

(37) Disability data is not included in the 2010 Decennial Census or the 2006-2010 ACS. This data is available in the ACS 2017-2021 ACS. Because of changes made to the Census and ACS questions between 1990 and ACS, disability variables should not be compared from year to year. For example: 1) with the 1990 data, the disabilities are listed as a "work disability" while this distinction is not made with 2000 or ACS data; 2) the ACS data includes the institutionalized population (e.g. persons in prisons and group homes) while this population is not included in 1990 or 2000; and 3) the age groupings changed over the years.

(38) The category Bachelor's Degree or Higher under the heading Educational Attainment Trends is a subset of the category High School Graduate or Higher.

## Metadata

- (39) Community and Fraternal Centers [https://etdmpub.florida-estat.org/meta/gc\\_communitycenter.xml](https://etdmpub.florida-estat.org/meta/gc_communitycenter.xml)
- (40) Correctional Facilities in Florida [https://etdmpub.florida-estat.org/meta/gc\\_correctional.xml](https://etdmpub.florida-estat.org/meta/gc_correctional.xml)
- (41) Cultural Centers in Florida [https://etdmpub.florida-estat.org/meta/gc\\_culturecenter.xml](https://etdmpub.florida-estat.org/meta/gc_culturecenter.xml)
- (42) Fire Department and Rescue Station Facilities in Florida [https://etdmpub.florida-estat.org/meta/gc\\_firestat.xml](https://etdmpub.florida-estat.org/meta/gc_firestat.xml)
- (43) Local, State, and Federal Government Buildings in Florida [https://etdmpub.florida-estat.org/meta/gc\\_govbuild.xml](https://etdmpub.florida-estat.org/meta/gc_govbuild.xml)
- (44) Florida Health Care Facilities [https://etdmpub.florida-estat.org/meta/gc\\_health.xml](https://etdmpub.florida-estat.org/meta/gc_health.xml)
- (45) Hospital Facilities in Florida [https://etdmpub.florida-estat.org/meta/gc\\_hospitals.xml](https://etdmpub.florida-estat.org/meta/gc_hospitals.xml)
- (46) Law Enforcement Facilities in Florida [https://etdmpub.florida-estat.org/meta/gc\\_lawenforce.xml](https://etdmpub.florida-estat.org/meta/gc_lawenforce.xml)
- (47) Florida Parks and Recreational Facilities [https://etdmpub.florida-estat.org/meta/gc\\_parks.xml](https://etdmpub.florida-estat.org/meta/gc_parks.xml)
- (48) Religious Centers [https://etdmpub.florida-estat.org/meta/gc\\_religion.xml](https://etdmpub.florida-estat.org/meta/gc_religion.xml)
- (49) Florida Public and Private Schools [https://etdmpub.florida-estat.org/meta/gc\\_schools.xml](https://etdmpub.florida-estat.org/meta/gc_schools.xml)
- (50) Social Service Centers [https://etdmpub.florida-estat.org/meta/gc\\_socialservice.xml](https://etdmpub.florida-estat.org/meta/gc_socialservice.xml)
- (51) Assisted Rental Housing Units in Florida [https://etdmpub.florida-estat.org/meta/gc\\_assisted\\_housing.xml](https://etdmpub.florida-estat.org/meta/gc_assisted_housing.xml)
- (52) Group Care Facilities <https://etdmpub.florida-estat.org/meta/groupcare.xml>
- (53) Mobile Home Parks in Florida [https://etdmpub.florida-estat.org/meta/gc\\_mobilehomes.xml](https://etdmpub.florida-estat.org/meta/gc_mobilehomes.xml)
- (54) Migrant Camps in Florida <https://etdmpub.florida-estat.org/meta/migrant.xml>
- (55) Veteran Organizations and Facilities [https://etdmpub.florida-estat.org/meta/gc\\_veterans.xml](https://etdmpub.florida-estat.org/meta/gc_veterans.xml)
- (56) Generalized Land Use [https://etdmpub.florida-estat.org/meta/lu\\_gen.xml](https://etdmpub.florida-estat.org/meta/lu_gen.xml)
- (57) Census Block Groups in Florida [https://etdmpub.florida-estat.org/meta/e2\\_cenacs\\_cci.xml](https://etdmpub.florida-estat.org/meta/e2_cenacs_cci.xml)
- (58) 1990 Census Block Groups in Florida [https://etdmpub.florida-estat.org/meta/e2\\_cenblkgrp\\_1990\\_cci.xml](https://etdmpub.florida-estat.org/meta/e2_cenblkgrp_1990_cci.xml)
- (59) 2000 Census Block Groups in Florida [https://etdmpub.florida-estat.org/meta/e2\\_cenblkgrp\\_2000\\_cci.xml](https://etdmpub.florida-estat.org/meta/e2_cenblkgrp_2000_cci.xml)
- (60) 2010 Census Block Groups in Florida [https://etdmpub.florida-estat.org/meta/e2\\_cenblkgrp\\_2010\\_cci.xml](https://etdmpub.florida-estat.org/meta/e2_cenblkgrp_2010_cci.xml)