

Celebration (CDP)

Area: [2](#) 10.58 square miles
Jurisdiction - Cities: [3](#) NA
Jurisdiction - Counties: [3](#) Osceola



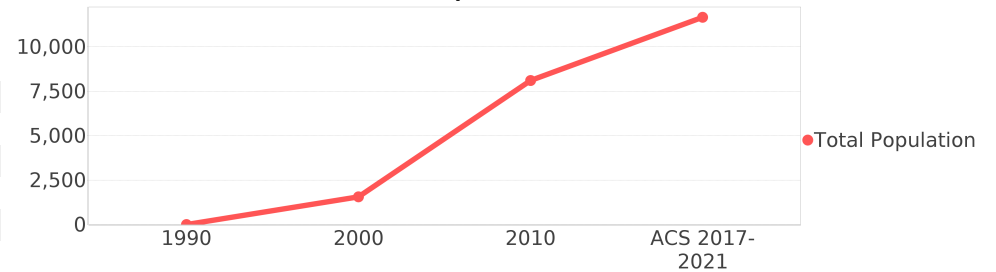
General Population Trends

Description	1990	2000	2010 ¹	ACS 2017-2021
Total Population	0	1,562	8,098	11,660
Total Households	0	560	3,091	4,125
Average Persons per Acre	0.19	0.95	0.97	3.39
Average Persons per Household	3.12	2.69	2.75	2.30
Average Persons per Family	3.17	3.38	3.00	2.85
Males	0	740	3,868	5,439
Females	0	821	4,230	6,221

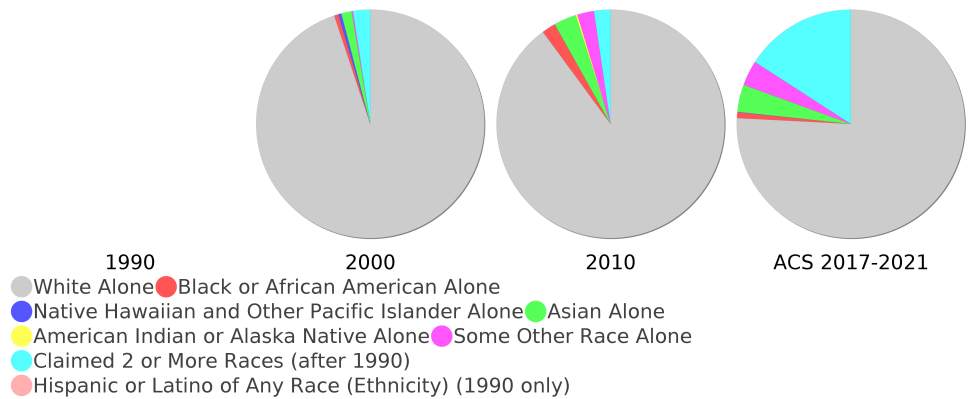
Race and Ethnicity Trends ^{5, 8, 9}

Description	1990	2000	2010 ¹	ACS 2017-2021
White Alone	0 ()	1,479 (94.69%)	7,277 (89.86%)	8,839 (75.81%)
Black or African American Alone	0 ()	9 (0.58%)	156 (1.93%)	93 (0.80%)
Native Hawaiian and Other Pacific Islander Alone	0 ()	7 (0.45%)	3 (0.04%)	9 (0.08%)
Asian Alone	0 ()	23 (1.47%)	258 (3.19%)	450 (3.86%)
American Indian or Alaska Native Alone	0 ()	0 (0.00%)	19 (0.23%)	0 (0.00%)
Some Other Race Alone	0 ()	3 (0.19%)	192 (2.37%)	417 (3.58%)
Claimed 2 or More Races	NA (NA)	38 (2.43%)	190 (2.35%)	1,851 (15.87%)
Hispanic or Latino of Any Race (Ethnicity)	0 ()	99 (6.34%)	1,044 (12.89%)	2,732 (23.43%)
Not Hispanic or Latino (Ethnicity)	0 ()	1,463 (93.66%)	7,054 (87.11%)	8,928 (76.57%)
Minority (Race and Ethnicity)	0 ()	166 (10.63%)	1,624 (20.05%)	4,111 (35.26%)

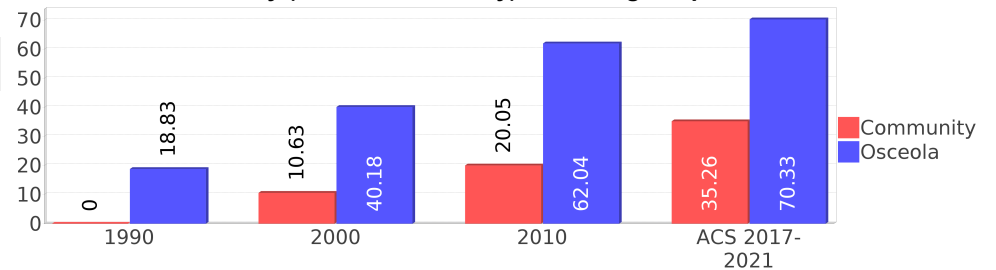
Population



Race



Minority (Race and Ethnicity) Percentage Population



Age Trends ⁵

Description	1990	2000	2010 ¹	ACS 2017-2021
Under Age 5		5.89%	5.47%	6.04%
Ages 5-17		26.95%	19.92%	25.00%
Ages 18-21		3.39%	4.10%	2.53%
Ages 22-29		8.07%	9.00%	9.03%
Ages 30-39		14.02%	13.23%	10.72%
Ages 40-49		19.14%	17.36%	13.31%
Ages 50-64		16.13%	21.83%	17.29%
Age 65 and Over		6.08%	9.05%	16.05%
-Ages 65-74		4.10%	6.30%	9.97%
-Ages 75-84		1.60%	2.15%	4.94%
-Age 85 and Over		0.32%	0.58%	1.14%
Median Age	NA	34	36	37

Income Trends ^{12, 13, 5}

Description	1990	2000	2010 ¹	ACS 2017-2021
Median Household Income	\$32,908	\$55,197	\$72,183	\$91,211
Median Family Income	\$35,798	\$65,273	\$59,835	\$107,248
Population below Poverty Level		5.63%	4.70%	2.81%
Households below Poverty Level		3.93%	6.28%	2.88%
Households with Public Assistance Income		0.00%	0.36%	2.23%

Disability Trends ¹⁰

See the [Data Sources](#) section below for an explanation about the differences in disability data among the various years.

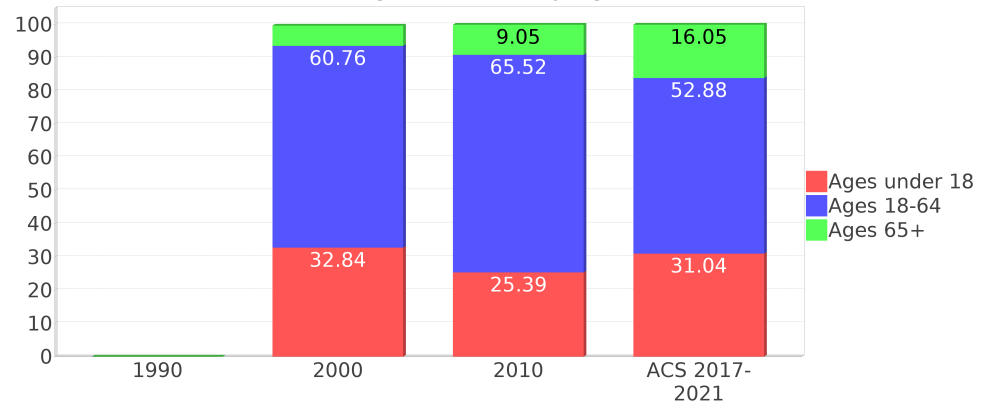
Description	1990	2000	2010 ¹	ACS 2017-2021
Population 16 To 64 Years with a disability	0 ()	167 (11.57%)	(NA)	(NA)
Population 20 To 64 Years with a disability	(NA)	(NA)	(NA)	582 (9.72%)

Educational Attainment Trends ^{11, 5}

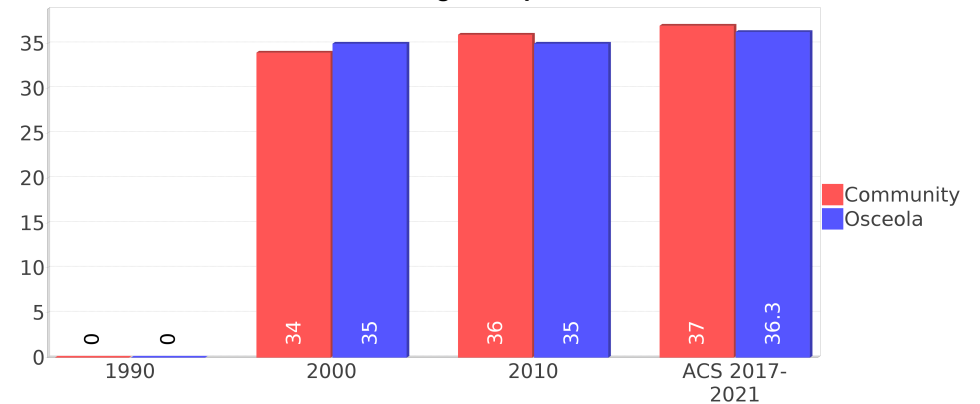
Age 25 and Over

Description	1990	2000	2010 ¹	ACS 2017-2021
Less than 9th Grade	0 ()	18 (1.90%)	45 (0.79%)	15 (0.20%)
9th to 12th Grade, No Diploma	0 ()	63 (6.64%)	96 (1.70%)	13 (0.18%)
High School Graduate or Higher	0 ()	866 (91.25%)	5,519 (97.49%)	7,313 (99.61%)
Bachelor's Degree or Higher	0 ()	511 (53.85%)	3,242 (57.27%)	4,387 (59.75%)

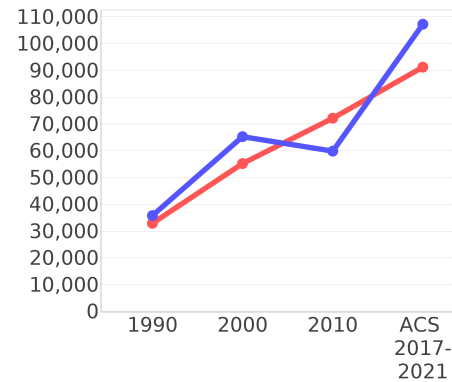
Percentage Population by Age Group



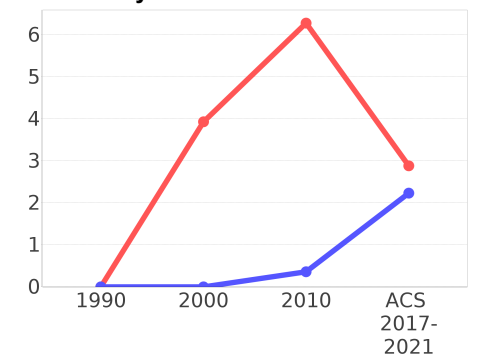
Median Age Comparison



Income Trends



Poverty and Public Assistance



Language Trends ⁵

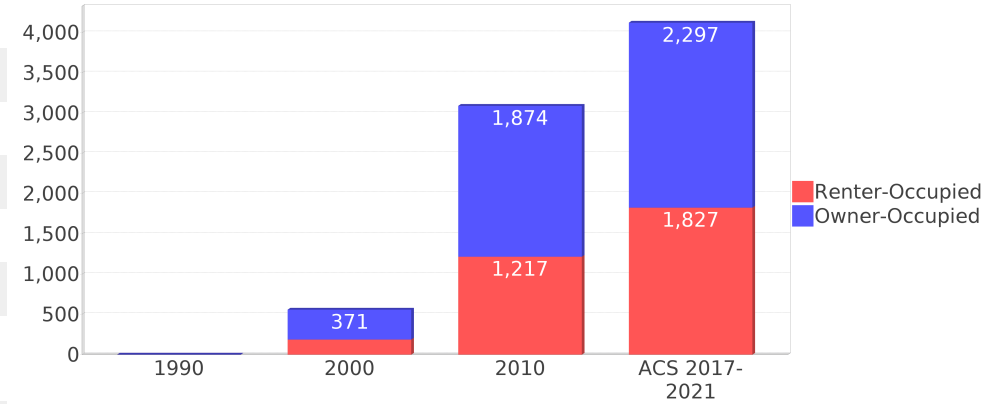
Age 5 and Over

Description	1990	2000	2010 ¹	ACS 2017-2021
Speaks English Well	0 ()	38 (2.59%)	114 (1.49%)	559 (5.10%)
Speaks English Not Well	NA (NA)	1 (0.07%)	67 (0.88%)	407 (3.71%)
Speaks English Not at All	NA (NA)	6 (0.41%)	16 (0.21%)	64 (0.58%)
Speaks English Not Well or Not at All	0 ()	7 (0.48%)	83 (1.09%)	471 (4.30%)
Speaks English Less than Very Well	NA (NA)	46 (3.13%)	198 (2.59%)	1,031 (9.41%)

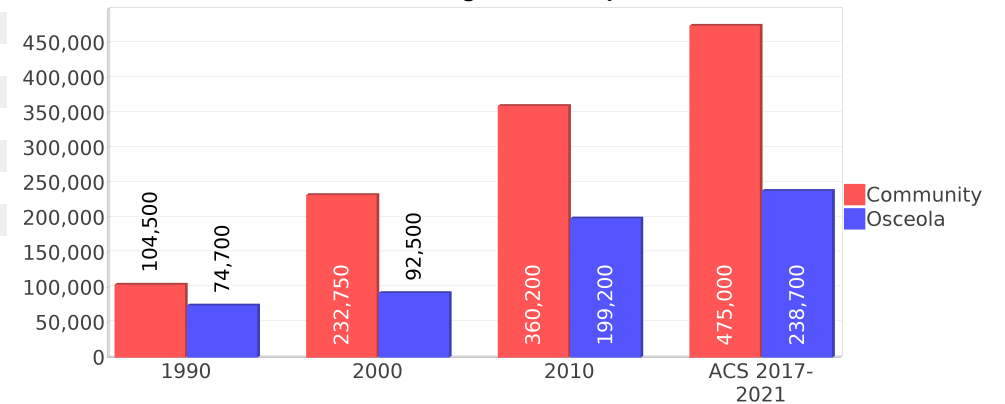
Housing Trends ⁵

Description	1990	2000	2010 ¹	ACS 2017-2021
Total	1	640	5,669	6,537
Units per Acre	0.08	0.14	1.00	1.50
Single-Family Units	0	450	2,705	2,783
Multi-Family Units	0	162	2,827	3,754
Mobile Home Units	0	21	0	0
Owner-Occupied Units	0	371	1,874	2,297
Renter-Occupied Units	0	188	1,217	1,827
Vacant Units	0	80	2,578	2,412
Median Housing Value	\$104,500	\$232,750	\$360,200	\$475,000
Occupied Housing Units w/No Vehicle	0 (0.00%)	0 (0.00%)	36 (1.16%)	120 (2.91%)

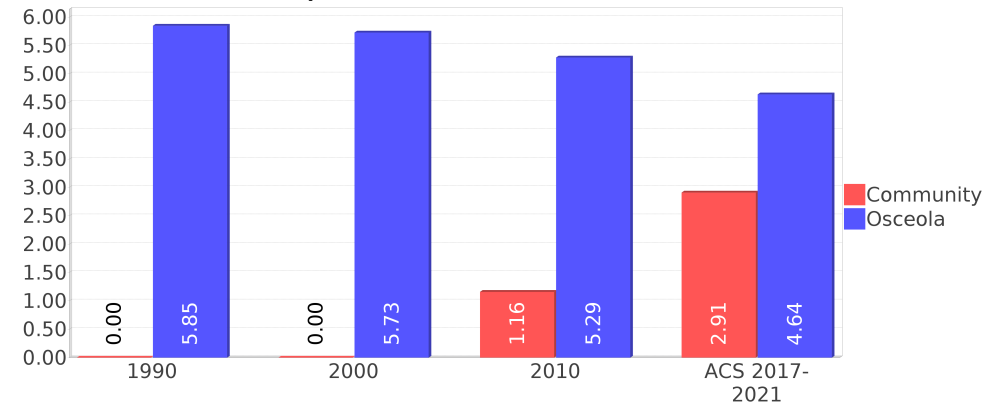
Housing Tenure



Median Housing Value Comparison



Occupied Units With No Vehicles Available



Geographic Mobility

Description	ACS 2017-2021
Median year householder moved into unit - Total	2016
Median year householder moved into unit - Owner Occupied	2012
Median year householder moved into unit - Renter Occupied	2016
Abroad 1 year ago	583
Different house in United States 1 year ago	2,108
Same house 1 year ago	8,885
Geographical Mobility in the Past Year - Total	11,577

Computers and Internet

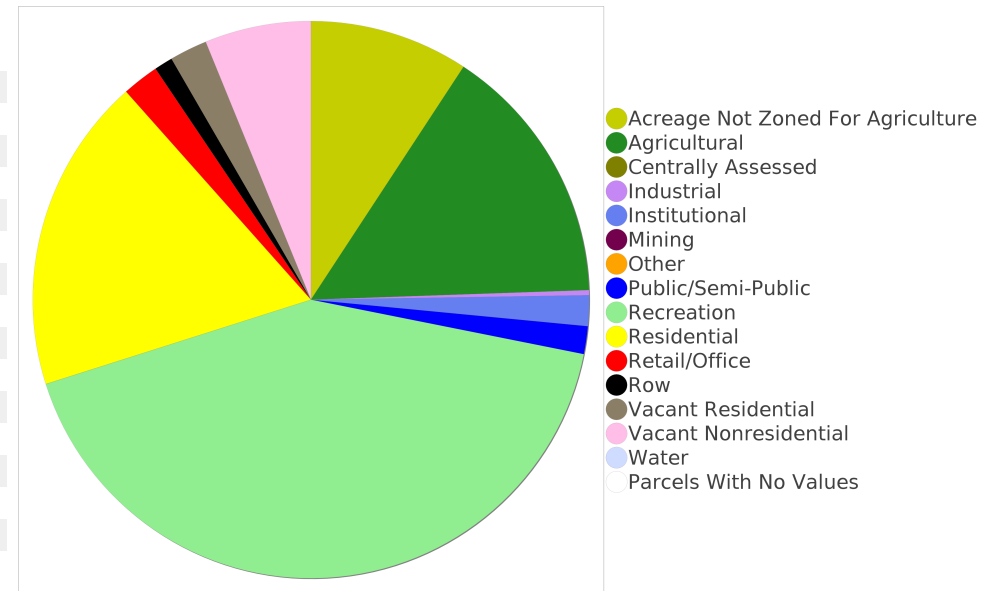
Description	ACS 2017-2021
Total Households Types of Computers in HH	4,125
Households with 1 or more device	4,044
Households with no computer	81
Total Households Presence and Types of Internet Subscriptions	4,125
Households with an internet subscription	3,665
Households with internet access without a subscription	392
Households with no internet access	67

Household Languages

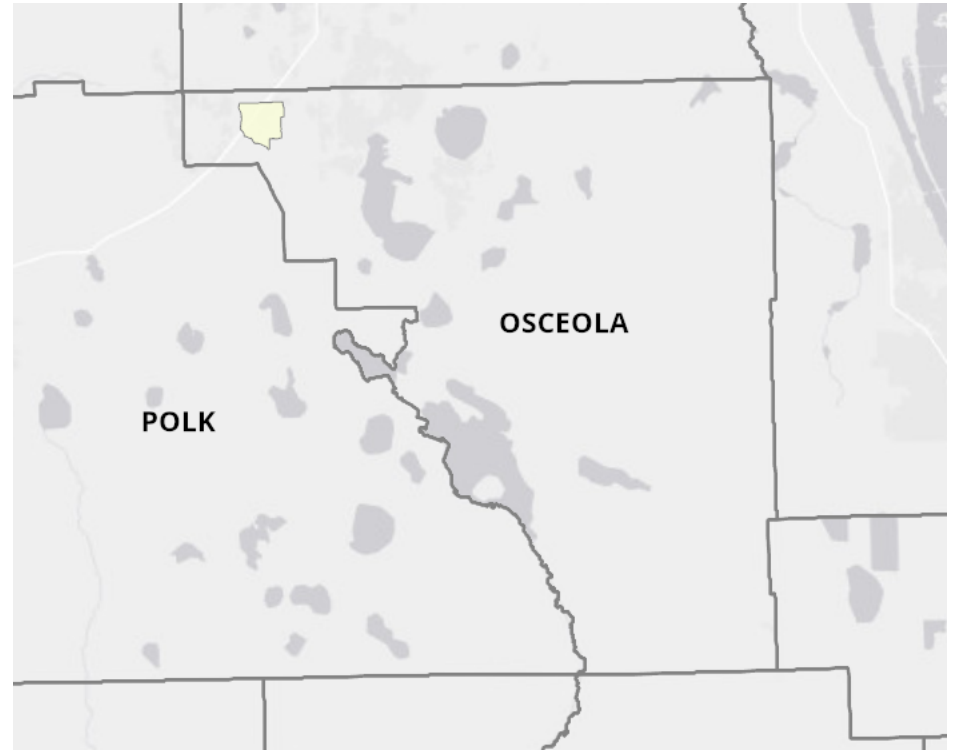
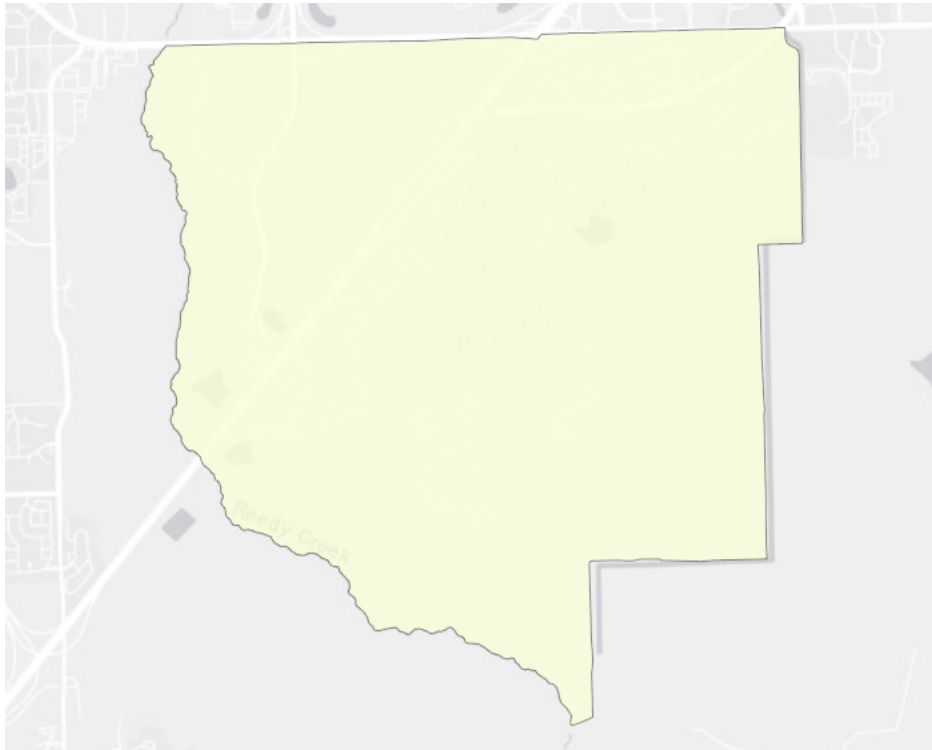
Description	ACS 2017-2021
Total Households by Household Language	4,125
Household Not Limited English Speaking Status	3,896
Spanish: Limited English speaking household	214
Indo-European languages: Limited English speaking household	15
Asian and Pacific Island languages: Limited English speaking household	0
Other languages: Limited English speaking household	0

Existing Land Use ¹⁵

Land Use Type	Acres	Percentage
Acreage Not Zoned For Agriculture	567	8.37%
Agricultural	933	13.78%
Centrally Assessed	0	0.00%
Industrial	18	0.27%
Institutional	109	1.61%
Mining	0	0.00%
Other	0	0.00%
Public/Semi-Public	99	1.46%
Recreation	2,575	38.03%
Residential	1,124	16.60%
Retail/Office	131	1.93%
Row	66	0.97%
Vacant Residential	134	1.98%
Vacant Nonresidential	379	5.60%
Water	0	0.00%
Parcels With No Values	<0.5	<0.01%



Location Maps



Community Facilities

The community facilities information below is useful in a variety of ways for environmental evaluations. These community resources should be evaluated for potential sociocultural effects, such as accessibility and relocation potential. The facility types may indicate the types of population groups present in the project study area. Facility staff and leaders can be sources of community information such as who uses the facility and how it is used. Additionally, community facilities are potential public meeting venues.

Community and Fraternal Centers

Facility Name	Address	Zip Code
KNIGHTS OF COLUMBUS 14132 - CORPUS CHRISTI	1050 CELEBRATION AVE	34747

Cultural Centers

Facility Name	Address	Zip Code
AMC - CELEBRATION	651 FRONT ST	34747
DISNEY DESTINATIONS - MARKETING RESOURCE CENTER LIBRARY	1390 CELEBRATION BLVD	34747

Fire Department and Rescue Station Facilities

Facility Name	Address	Zip Code
OSCEOLA COUNTY FIRE DEPARTMENT STATION (CELEBRATION SOUTH) (PROPOSED)		34747
OSCEOLA COUNTY FIRE DEPARTMENT AND RESCUE STATION 72 (CELEBRATION)	595 CELEBRATION PL	34747

Government Buildings

Facility Name	Address	Zip Code
TOWN OF CELEBRATION TOWN HALL	851 CELEBRATION AVE	34747
U S POST OFFICE - CELEBRATION	601 MARKET ST	34747

Hospital Facilities

Facility Name	Address	Zip Code
FLORIDA HOSPITAL CELEBRATION HEALTH	400 CELEBRATION PL	34747

Religious Centers

Facility Name	Address	Zip Code
COMMUNITY PRESBYTERIAN CHURCH	511 CELEBRATION AVENUE	34747
CORPUS CHRISTI CHURCH	1050 CELEBRATION AVE	34747
CELEBRATION COMMUNITY CHURCH	1201 CELEBRATION AVE	34747

Public Schools

Facility Name	Address	Zip Code
STETSON UNIVERSITY	800 CELEBRATION AVE	34747
CELEBRATION HIGH SCHOOL	1809 CELEBRATION BLVD	34747
CELEBRATION SCHOOL	510 CAMPUS ST	34747

Group Care Facilities

Facility Name	Address	Zip Code
MONTESSORI SCHOOL OF CELEBRATION	901 BEGONIA ROAD	34747
LEARNING TRAILS	660 CELEBRATION AVENUE, SUITE 150	34747
CREATION KIDS VILLAGE	599 CELEBRATION PLACE	34747
FOREIGN LANGUAGE IMMERSION EARLY CHILDHOOD CENTER	1530 CELEBRATION BOULEVARD, SUITE 103	34747
CELEBRATION SCHOOL K-8	510 CAMPUS STREET	34747
CELEBRATION HIGH SCHOOL	1809 CELEBRATION BOULEVARD	34747

Block Groups

The following Census Block Groups were used to calculate demographics for this report.

1990 Census Block Groups

120970401012, 120970401013

2000 Census Block Groups

120970408003, 120970408001

2010 Census Block Groups

120970408021, 120970408031, 120970408032, 120970408011

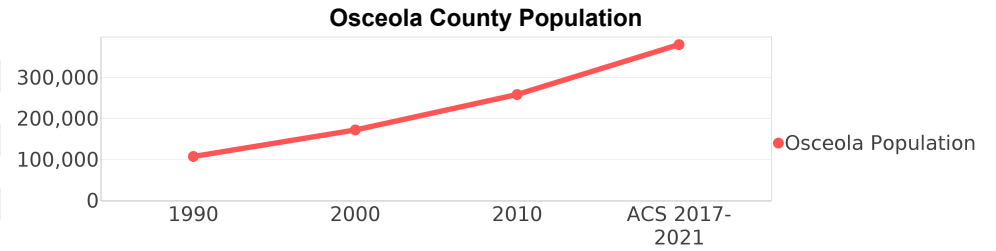
Census Block Groups

120970408071, 120970408082, 120970408072, 120970408062, 120970408081, 120970408073

Osceola County Demographic Profile

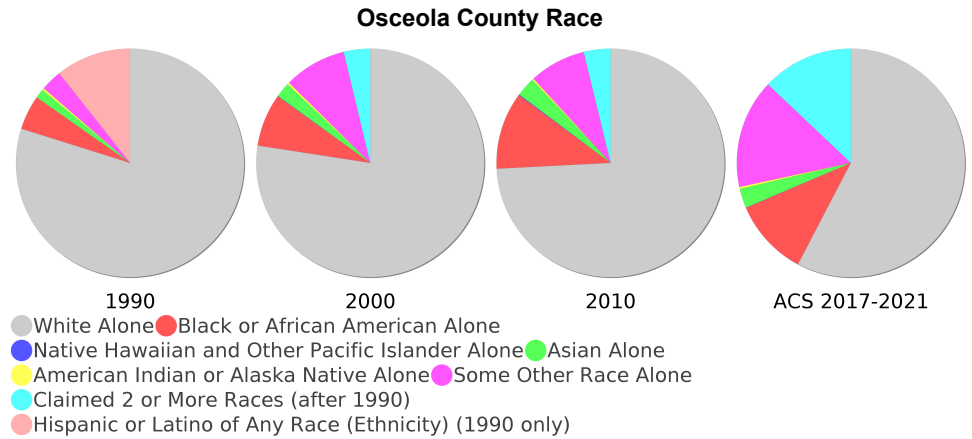
General Population Trends - Osceola ⁵

Description	1990	2000	2010 ¹	ACS 2017-2021
Total Population	107,728	172,493	258,531	380,331
Total Households	39,150	60,977	92,526	110,156
Average Persons per Acre	0.112	0.179	0.268	0.39
Average Persons per Household	2.752	2.79	3.00	3.44
Average Persons per Family	3.152	3.296	3.233	4.16
Males	52,716	85,185	126,812	188,551



Race and Ethnicity Trends - Osceola ^{5, 8, 9}

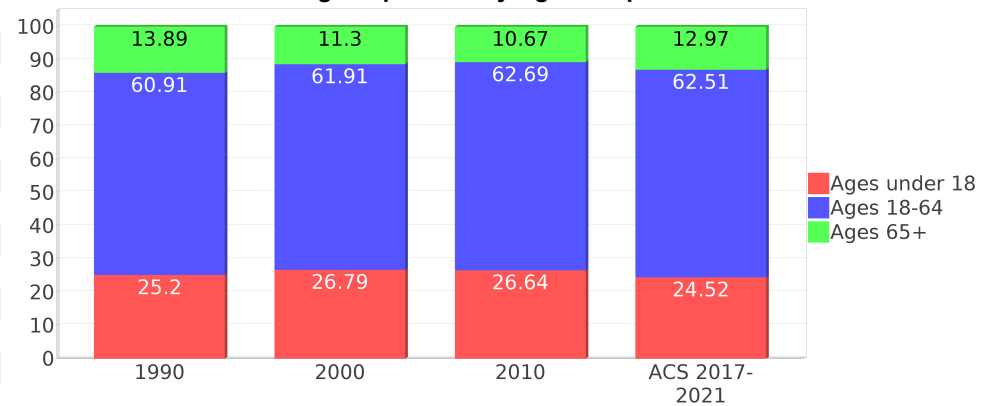
Description	1990	2000	2010 ¹	ACS 2017-2021
White Alone	96,231 (89.33%)	133,590 (77.45%)	191,793 (74.19%)	219,358 (57.68%)
Black or African American Alone	5,902 (5.48%)	12,873 (7.46%)	28,224 (10.92%)	41,349 (10.87%)
Native Hawaiian and Other Pacific Islander Alone	(NA)	103 (0.06%)	283 (0.11%)	172 (0.05%)
Asian Alone	1,571 (1.46%)	3,642 (2.11%)	7,090 (2.74%)	10,424 (2.74%)
American Indian or Alaska Native Alone	360 (0.33%)	493 (0.29%)	594 (0.23%)	1,113 (0.29%)
Some Other Race Alone	3,598 (3.34%)	15,286 (8.86%)	20,727 (8.02%)	58,672 (15.43%)
Claimed 2 or More Races	(NA)	6,506 (3.77%)	9,820 (3.80%)	49,243 (12.95%)
Hispanic or Latino of Any Race (Ethnicity)	12,866 (11.94%)	50,742 (29.42%)	112,439 (43.49%)	210,907 (55.45%)
Not Hispanic or Latino (Ethnicity)	94,862 (88.06%)	121,751 (70.58%)	146,092 (56.51%)	169,424 (44.55%)
Minority (Race and Ethnicity)	20,289 (18.83%)	69,306 (40.18%)	160,393 (62.04%)	267,499 (70.33%)



Age Trends - Osceola ⁵

Description	1990	2000	2010 ¹	ACS 2017-2021
Under Age 5	7.34%	6.65%	6.87%	6.16%
Ages 5-17	17.86%	20.14%	19.77%	18.36%
Ages 18-21	5.74%	4.99%	5.73%	5.01%
Ages 22-29	12.81%	11.16%	10.65%	11.19%
Ages 30-39	16.19%	16.18%	14.33%	14.41%
Ages 40-49	12.71%	14.88%	15.16%	14.47%
Ages 50-64	13.45%	14.70%	16.81%	17.43%
Age 65 and Over	13.89%	11.30%	10.67%	12.97%
-Ages 65-74	8.33%	6.38%	6.33%	7.94%
-Ages 75-84	4.19%	3.75%	3.37%	3.62%
-Age 85 and Over	1.38%	1.17%	0.97%	1.41%
Median Age	NA	35	35	36.3

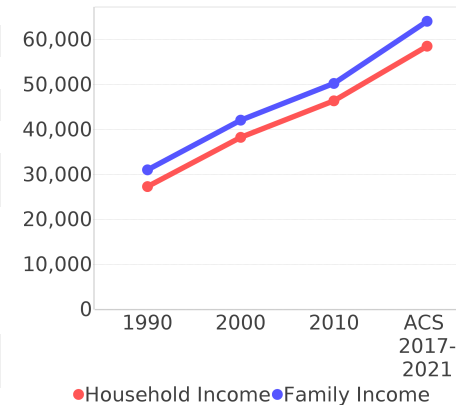
Percentage Population by Age Group - Osceola



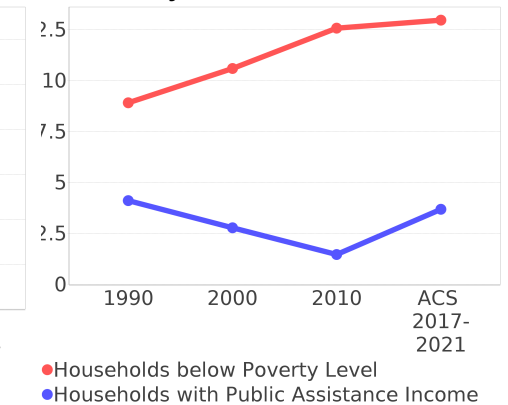
Income Trends - Osceola ⁵

Description	1990	2000	2010 ¹	ACS 2017-2021
Median Household Income	\$27,260	\$38,214	\$46,328	\$58,513
Median Family Income	\$31,006	\$42,061	\$50,203	\$64,037
Population below Poverty Level	9.39%	11.52%	13.25%	13.51%
Households below Poverty Level	8.91%	10.59%	12.57%	12.96%
Households with Public Assistance Income	4.11%	2.78%	1.47%	3.69%

Income Trends



Poverty and Public Assistance



Disability Trends - Osceola ¹⁰

See the Data Sources section below for an explanation about the differences in disability data among the various years.

Description	1990	2000	2010 ¹	ACS 2017-2021
Population 16 To 64 Years with a disability	5,763 (7.01%)	24,744 (15.56%)	NA (NA)	NA (NA)
Population 20 To 64 Years with a disability	NA (NA)	NA (NA)	NA (NA)	26,291 (11.58%)

Educational Attainment Trends - Osceola ^{11, 5}

Age 25 and Over

Description	1990	2000	2010 ¹	ACS 2017-2021
Less than 9th Grade	6,200 (8.83%)	6,810 (6.16%)	10,668 (6.48%)	14,290 (5.67%)
9th to 12th Grade, No Diploma	12,307 (17.52%)	16,285 (14.72%)	15,080 (9.16%)	19,453 (7.72%)
High School Graduate or Higher	51,737 (73.65%)	87,512 (79.12%)	138,898 (84.36%)	218,260 (86.61%)
Bachelor's Degree or Higher	7,873 (11.21%)	17,416 (15.75%)	30,086 (18.27%)	61,263 (24.31%)

Language Trends - Osceola ⁵

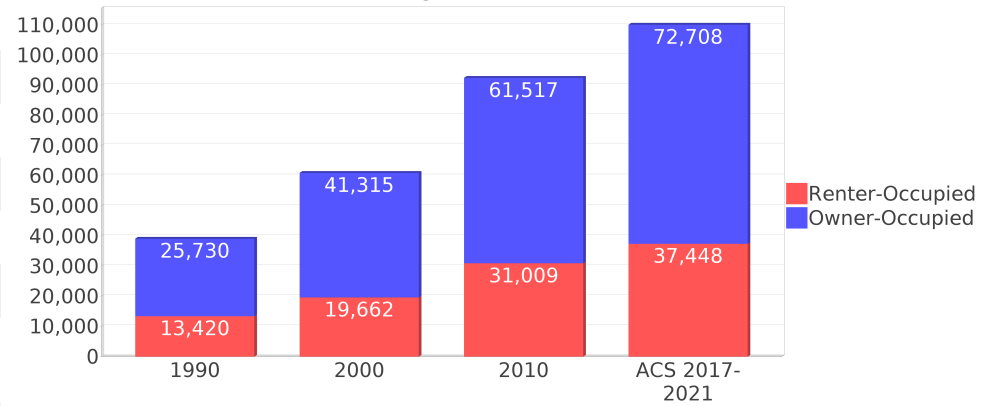
Age 5 and Over

Description	1990	2000	2010 ¹	ACS 2017-2021
Speaks English Well	3,735 (3.74%)	12,514 (7.77%)	22,965 (9.54%)	36,984 (10.36%)
Speaks English Not Well	NA (NA)	7,938 (4.93%)	16,582 (6.89%)	25,013 (7.01%)
Speaks English Not at All	NA (NA)	2,437 (1.51%)	5,376 (2.23%)	11,558 (3.24%)
Speaks English Not Well or Not at All	2,530 (2.54%)	10,375 (6.44%)	21,958 (9.12%)	36,571 (10.25%)
Speaks English Less than Very Well	NA (NA)	22,889 (14.21%)	44,923 (18.66%)	73,555 (20.61%)

Housing Trends - Osceola ⁵

Description	1990	2000	2010 ¹	ACS 2017-2021
Total	47,959	72,293	122,823	150,567
Units per Acre	0.05	0.075	0.127	0.16
Single-Family Units	23,390	46,340	79,778	100,295
Multi-Family Units	7,666	14,477	29,807	38,903
Mobile Home Units	7,802	10,989	12,794	11,150
Owner-Occupied Units	25,730	41,315	61,517	72,708
Renter-Occupied Units	13,420	19,662	31,009	37,448
Vacant Units	8,809	11,316	30,297	40,411
Median Housing Value	\$74,700	\$92,500	\$199,200	\$238,700
Occupied Housing Units w/No Vehicle	2,291 (5.85%)	3,492 (5.73%)	4,897 (5.29%)	5,115 (4.64%)
Median year householder moved into unit - Total	NA	NA	NA	2015
Median year householder moved into unit - Owner Occupied	NA	NA	NA	2012
Median year householder moved into unit - Renter Occupied	NA	NA	NA	2017
Abroad 1 year ago	NA	NA	NA	6,764
Different house in United States 1 year ago	NA	NA	NA	43,891
Same house 1 year ago	NA	NA	NA	325,445
Geographical Mobility in the Past Year - Total	NA	NA	NA	325,445

Housing Tenure - Osceola



Data Sources

ACS vs Census Data

(1) The 2010 Census data is represented by a combination of decennial and ACS (2006-2010) data. The General Population Trends, Race and Ethnicity Trends, Age Trends are entirely from decennial. The Income Trends, Language Trends are entirely from the ACS. The Housing Trends section is derived from both: Decennial (Total # Housing Units, Housing Units per Acre, Owner-Occupied Units, Renter-Occupied Units, Vacant Units); ACS (Single Family Units, Multi-family Units, Mobile Homes, Median Housing Value, Occupied Housing Units w/No Vehicle).

Area

(2) The geographic area of the community based on a user-defined community boundary or area of interest (AOI) boundary.

Jurisdiction

(3) Jurisdiction(s) includes local government boundaries that intersect the user-defined community or AOI boundary.

Goals, Values and History

(4) Information under the headings Goals and Values and History is entered manually by the user before the Sociocultural Data Report (SDR) is generated. This information is usually not available for communities with boundaries that are based on Census-defined places (i.e., not user-specified).

Demographic Data

(5) Demographic data reported under the headings General Population Trends, Race and Ethnicity Trends, Age Trends, Income Trends, Educational Attainment Trends, Language Trends, and Housing Trends is from the U.S. Decennial Census for 1990 and 2000 and the American Community Survey (ACS) 5-year estimates for 2006-2010 and ACS 2017-2021. The data was gathered at the block group level for user-defined communities, Census places, and AOIs, and at the county level for counties. Depending on the dataset, the data represents 100% counts (Census Summary File 1) or sample-based information (Census Summary File 3 or ACS). For more information about using demographic data, please see the training videos located here: <https://www.fdot.gov/environment/pubs/sce/sce1.shtm>.

About the Census Data

(6) The block group analysis for ETDM project analysis areas, user-defined communities, Census places, and AOI boundaries do not always correspond precisely to block group boundaries. To estimate the actual population more accurately, the SDR analysis adjusts the geographic area and data of affected block groups using the following methodology:

Delete overlapping census blocks with extremely low populations (2 or fewer people)
Remove the portion of the block group that lies outside of the analysis area
Recalculate the demographics assuming an equal area distribution of the population

Note that there may be areas where there is no population.

(7) Use caution when comparing the 100% count data (Decennial Census) to the sample-based data (ACS). In any given year, about one in 40 U.S. households will receive the ACS questionnaire. Over any five-year period, about one in eight households will receive the questionnaire, as compared to about one in six that received the long form questionnaire for the Decennial Census 2000. (Source: https://www.census.gov/content/dam/Census/programs-surveys/acs/news/10ACS_keyfacts.pdf) The U.S. Census Bureau provides help with this process: <https://www.census.gov/programs-surveys/acs/guidance/comparing-acs-data.html>

(8) Race and ethnicity are separate questions on the Census questionnaire. Individuals can report multiple race and ethnicity answers; therefore, numbers in the Race and Ethnicity portion of this report may add up to be greater than the total population. In addition, use caution when interpreting changes in race and ethnicity over time. Starting with the 2000 Decennial Census, respondents could select one or more race categories. Also in 2000, the placement of the question about Hispanic origin changed, helping to increase responsiveness to the Hispanic-origin question. Because of these and other changes, the 1990 data on race and ethnicity are not directly comparable with data from later censuses. (Source: <https://www.census.gov/library/publications/2001/dec/c2kbr01-01.html>)

(9) The "Minority" calculations use both the race and ethnicity responses from Census and ACS data. In this report, "Minority" refers to individuals who list a race other than White and/or list their ethnicity as Hispanic/Latino. In other words, people who are multi-racial, any single race other than White, or Hispanic/Latino of any race are considered minorities. We use the following formula: $MINORITY = TOTALPOP - WHITE_NH$ where TOTALPOP is the Total Population and WHITE_NH is the population with a race of White alone and an ethnicity of Not Hispanic or Latino. Translating this to the field names used in the census ACS source data, the formula looks like this: $MINORITY = B01003_E001 - B03002_E003$. (Note, the WHITE_NH population is not reported separately in this report.)

(10) Disability data is not included in the 2010 Decennial Census or the 2006-2010 ACS. This data is available in the ACS 2017-2021 ACS. Because of changes made to the Census and ACS questions between 1990 and ACS, disability variables should not be compared from year to year. For example: 1) with the 1990 data, the disabilities are listed as a "work disability" while this distinction is not made with 2000 or ACS data; 2) the ACS data includes the institutionalized population (e.g. persons in prisons and group homes) while this population is not included in 1990 or 2000; and 3) the age groupings changed over the years.

(11) The category Bachelor's Degree or Higher under the heading Educational Attainment Trends is a subset of the category High School Graduate or Higher.

(12) Income of households. This includes the income of the householder and all other individuals 15 years old and over in the household, whether they are related to the householder or not. Because many households consist of only one person, average household income is usually less than average family income.

(13) Income of families. In compiling statistics on family income, the incomes of all members 15 years old and over related to the householder are summed and treated as a single amount.

(14) Age trends. The median age for 1990 is not available.

Land Use Data

(15) The Land Use information Indicates acreages and percentages for the generalized land use types used to group parcel-specific, existing land use assigned by the county property appraiser office according to the Florida Department of Revenue land use codes.

Community Facilities Data

- (16) Assisted Rental Housing Units - Identifies multifamily rental developments that receive funding assistance under federal, state, and local government programs to offer affordable housing as reported by the Shimberg Center for Housing Studies, University of Florida.
- (17) Mobile Home Parks - Identifies approved or acknowledged mobile home parks reported by the Florida Department of Business and Professional Regulation and Florida Department of Health.
- (18) Migrant Camps - Identifies migrant labor camp facilities inspected by the Florida Department of Health.
- (19) Group Care Facilities - Identifies group care facilities inspected by the Florida Department of Health.
- (20) Community Center and Fraternal Association Facilities - Identifies facilities reported by multiple sources.
- (21) Law Enforcement Correctional Facilities - Identifies facilities reported by multiple sources.
- (22) Cultural Centers - Identifies cultural centers including organizations, buildings, or complexes that promote culture and arts (e.g., aquariums and zoological facilities; arboreta and botanical gardens; dinner theaters; drive-ins; historical places and services; libraries; motion picture theaters; museums and art galleries; performing arts centers; performing arts theaters; planetariums; studios and art galleries; and theater producers stage facilities) reported by multiple sources.
- (23) Fire Department and Rescue Station Facilities - Identifies facilities reported by multiple sources.
- (24) Government Buildings - Identifies local, state, and federal government buildings reported by multiple sources.
- (25) Health Care Facilities - Identifies health care facilities including abortion clinics, dialysis clinics, medical doctors, nursing homes, osteopaths, state laboratories/clinics, and surgicenters/walk-in clinics reported by the Florida Department of Health.
- (26) Hospital Facilities - Identifies hospital facilities reported by multiple sources.
- (27) Law Enforcement Facilities - Identifies law enforcement facilities reported by multiple sources.
- (28) Parks and Recreational Facilities - Identifies parks and recreational facilities reported by multiple sources.
- (29) Religious Center Facilities - Identifies religious centers including churches, temples, synagogues, mosques, chapels, centers, and other types of religious facilities reported by multiple sources.
- (30) Private and Public Schools - Identifies private and public schools reported by multiple sources.
- (31) Social Service Centers - Identifies social service centers reported by multiple sources.
- (32) Veteran Organizations and Facilities

County Data Sources

ACS vs Census Data

(1) The 2010 Census data is represented by a combination of decennial and ACS (2006-2010) data. The General Population Trends, Race and Ethnicity Trends, Age Trends are entirely from decennial. The Income Trends, Language Trends are entirely from the ACS. The Housing Trends section is derived from both: Decennial (Total # Housing Units, Housing Units per Acre, Owner-Occupied Units, Renter-Occupied Units, Vacant Units); ACS (Single Family Units, Multi-family Units, Mobile Homes, Median Housing Value, Occupied Housing Units w/No Vehicle).

About the Census Data

(34) Use caution when comparing the 100% count data (Decennial Census) to the sample-based data (ACS). In any given year, about one in 40 U.S. households will receive the ACS questionnaire. Over any five-year period, about one in eight households will receive the questionnaire, as compared to about one in six that received the long form questionnaire for the Decennial Census 2000. (Source: https://www.census.gov/content/dam/Census/programs-surveys/acs/news/10ACS_keyfacts.pdf) The U.S. Census Bureau provides help with this process: <https://www.census.gov/programs-surveys/acs/guidance/comparing-acs-data.html>

(35) Race and ethnicity are separate questions on the Census questionnaire. Individuals can report multiple race and ethnicity answers; therefore, numbers in the Race and Ethnicity portion of this report may add up to be greater than the total population. In addition, use caution when interpreting changes in race and ethnicity over time. Starting with the 2000 Decennial Census, respondents could select one or more race categories. Also in 2000, the placement of the question about Hispanic origin changed, helping to increase responsiveness to the Hispanic-origin question. Because of these and other changes, the 1990 data on race and ethnicity are not directly comparable with data from later censuses. (Source: <https://www.census.gov/library/publications/2001/dec/c2kbr01-01.html>)

(36) The "Minority" calculations use both the race and ethnicity responses from Census and ACS data. In this report, "Minority" refers to individuals who list a race other than White and/or list their ethnicity as Hispanic/Latino. In other words, people who are multi-racial, any single race other than White, or Hispanic/Latino of any race are considered minorities. We use the following formula: $MINORITY = TOTALPOP - WHITE_NH$ where TOTALPOP is the Total Population and WHITE_NH is the population with a race of White alone and an ethnicity of Not Hispanic or Latino. Translating this to the field names used in the census ACS source data, the formula looks like this: $MINORITY = B01003_E001 - B03002_E003$. (Note, the WHITE_NH population is not reported separately in this report.)

(37) Disability data is not included in the 2010 Decennial Census or the 2006-2010 ACS. This data is available in the ACS 2017-2021 ACS. Because of changes made to the Census and ACS questions between 1990 and ACS, disability variables should not be compared from year to year. For example: 1) with the 1990 data, the disabilities are listed as a "work disability" while this distinction is not made with 2000 or ACS data; 2) the ACS data includes the institutionalized population (e.g. persons in prisons and group homes) while this population is not included in 1990 or 2000; and 3) the age groupings changed over the years.

(38) The category Bachelor's Degree or Higher under the heading Educational Attainment Trends is a subset of the category High School Graduate or Higher.

Metadata

- (39) Community and Fraternal Centers https://etdmpub.florida-estat.org/meta/gc_communitycenter.xml
- (40) Correctional Facilities in Florida https://etdmpub.florida-estat.org/meta/gc_correctional.xml
- (41) Cultural Centers in Florida https://etdmpub.florida-estat.org/meta/gc_culturecenter.xml
- (42) Fire Department and Rescue Station Facilities in Florida https://etdmpub.florida-estat.org/meta/gc_firestat.xml
- (43) Local, State, and Federal Government Buildings in Florida https://etdmpub.florida-estat.org/meta/gc_govbuild.xml
- (44) Florida Health Care Facilities https://etdmpub.florida-estat.org/meta/gc_health.xml
- (45) Hospital Facilities in Florida https://etdmpub.florida-estat.org/meta/gc_hospitals.xml
- (46) Law Enforcement Facilities in Florida https://etdmpub.florida-estat.org/meta/gc_lawenforce.xml
- (47) Florida Parks and Recreational Facilities https://etdmpub.florida-estat.org/meta/gc_parks.xml
- (48) Religious Centers https://etdmpub.florida-estat.org/meta/gc_religion.xml
- (49) Florida Public and Private Schools https://etdmpub.florida-estat.org/meta/gc_schools.xml
- (50) Social Service Centers https://etdmpub.florida-estat.org/meta/gc_socialservice.xml
- (51) Assisted Rental Housing Units in Florida https://etdmpub.florida-estat.org/meta/gc_assisted_housing.xml
- (52) Group Care Facilities <https://etdmpub.florida-estat.org/meta/groupcare.xml>
- (53) Mobile Home Parks in Florida https://etdmpub.florida-estat.org/meta/gc_mobilehomes.xml
- (54) Migrant Camps in Florida <https://etdmpub.florida-estat.org/meta/migrant.xml>
- (55) Veteran Organizations and Facilities https://etdmpub.florida-estat.org/meta/gc_veterans.xml
- (56) Generalized Land Use https://etdmpub.florida-estat.org/meta/lu_gen.xml
- (57) Census Block Groups in Florida https://etdmpub.florida-estat.org/meta/e2_cenacs_cci.xml
- (58) 1990 Census Block Groups in Florida https://etdmpub.florida-estat.org/meta/e2_cenblkgrp_1990_cci.xml
- (59) 2000 Census Block Groups in Florida https://etdmpub.florida-estat.org/meta/e2_cenblkgrp_2000_cci.xml
- (60) 2010 Census Block Groups in Florida https://etdmpub.florida-estat.org/meta/e2_cenblkgrp_2010_cci.xml