

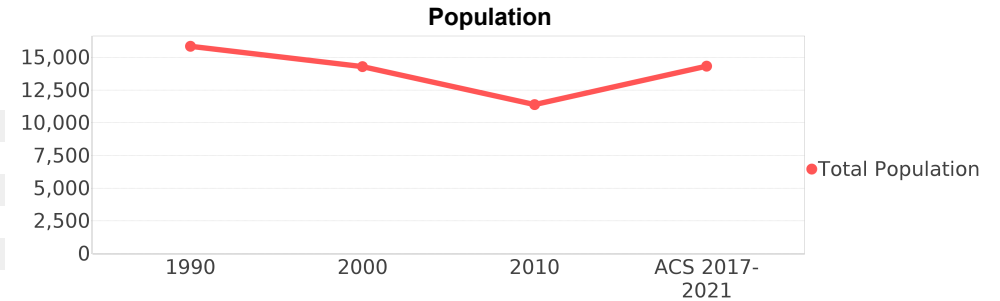
Gladeview (CDP)

Area: [2](#) 2.565 square miles
Jurisdiction - Cities: [3](#) Hialeah, Miami
Jurisdiction - Counties: [3](#) Miami-Dade



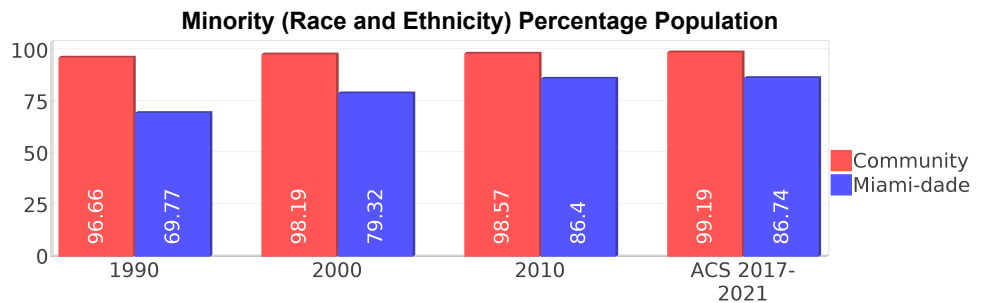
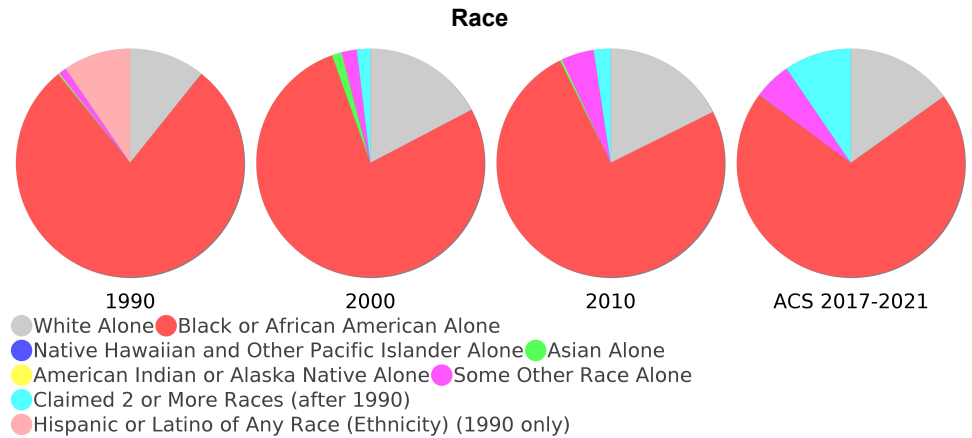
General Population Trends

Description	1990	2000	2010 ¹	ACS 2017-2021
Total Population	15,853	14,293	11,386	14,331
Total Households	4,971	4,314	3,631	4,592
Average Persons per Acre	14.65	13.39	11.79	12.77
Average Persons per Household	3.21	3.22	3.00	2.94
Average Persons per Family	3.85	3.90	3.74	3.87
Males	7,258	6,738	5,419	6,628
Females	8,595	7,554	5,966	7,702



Race and Ethnicity Trends ^{5, 8, 9}

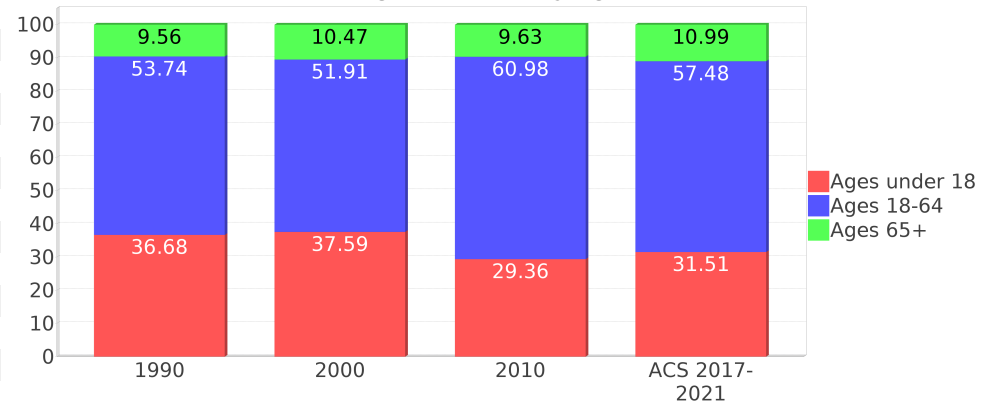
Description	1990	2000	2010 ¹	ACS 2017-2021
White Alone	1,887 (11.90%)	2,474 (17.31%)	2,009 (17.64%)	2,168 (15.13%)
Black or African American Alone	13,735 (86.64%)	11,035 (77.21%)	8,538 (74.99%)	10,030 (69.99%)
Native Hawaiian and Other Pacific Islander Alone	0 (0.00%)	0 (0.00%)	0 (0.00%)	0 (0.00%)
Asian Alone	20 (0.13%)	190 (1.33%)	23 (0.20%)	8 (0.06%)
American Indian or Alaska Native Alone	20 (0.13%)	11 (0.08%)	14 (0.12%)	0 (0.00%)
Some Other Race Alone	189 (1.19%)	306 (2.14%)	526 (4.62%)	755 (5.27%)
Claimed 2 or More Races	NA (NA)	274 (1.92%)	273 (2.40%)	1,369 (9.55%)
Hispanic or Latino of Any Race (Ethnicity)	1,678 (10.58%)	2,941 (20.58%)	2,773 (24.35%)	4,680 (32.66%)
Not Hispanic or Latino (Ethnicity)	14,175 (89.42%)	11,352 (79.42%)	8,613 (75.65%)	9,651 (67.34%)
Minority (Race and Ethnicity)	15,323 (96.66%)	14,034 (98.19%)	11,223 (98.57%)	14,215 (99.19%)



Age Trends ⁵

Description	1990	2000	2010 ¹	ACS 2017-2021
Under Age 5	11.05%	8.56%	8.63%	8.98%
Ages 5-17	25.63%	29.03%	20.73%	22.52%
Ages 18-21	6.13%	6.98%	7.42%	6.06%
Ages 22-29	11.93%	8.59%	12.14%	13.95%
Ages 30-39	13.84%	14.01%	11.82%	13.59%
Ages 40-49	8.40%	11.59%	13.66%	10.89%
Ages 50-64	13.44%	10.73%	15.94%	12.99%
Age 65 and Over	9.56%	10.47%	9.63%	10.99%
-Ages 65-74	5.93%	6.70%	5.33%	5.92%
-Ages 75-84	2.91%	3.25%	3.28%	3.66%
-Age 85 and Over	0.72%	0.52%	1.01%	1.40%
Median Age	NA	32	32	31

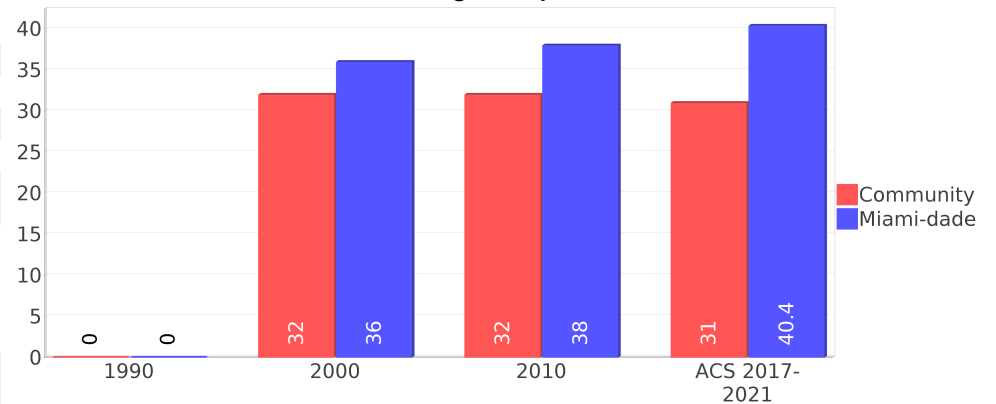
Percentage Population by Age Group



Income Trends ^{12, 13, 5}

Description	1990	2000	2010 ¹	ACS 2017-2021
Median Household Income	\$13,357	\$18,333	\$25,795	\$39,355
Median Family Income	\$19,444	\$21,750	\$30,092	\$40,470
Population below Poverty Level	50.17%	52.47%	33.94%	35.24%
Households below Poverty Level	46.19%	48.73%	27.49%	34.30%
Households with Public Assistance Income	28.02%	16.83%	3.69%	3.29%

Median Age Comparison



Disability Trends ¹⁰

See the Data Sources section below for an explanation about the differences in disability data among the various years.

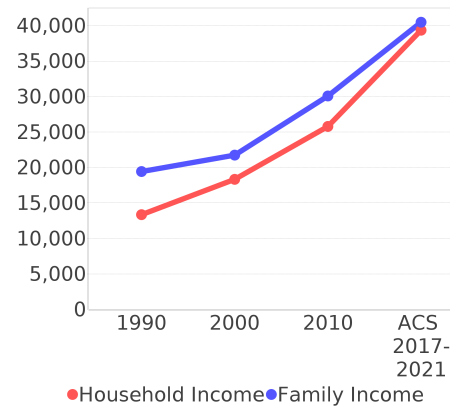
Description	1990	2000	2010 ¹	ACS 2017-2021
Population 16 To 64 Years with a disability	1242 (11.80%)	2449 (18.74%)	(NA)	(NA)
Population 20 To 64 Years with a disability	(NA)	(NA)	(NA)	608 (7.92%)

Educational Attainment Trends ^{11, 5}

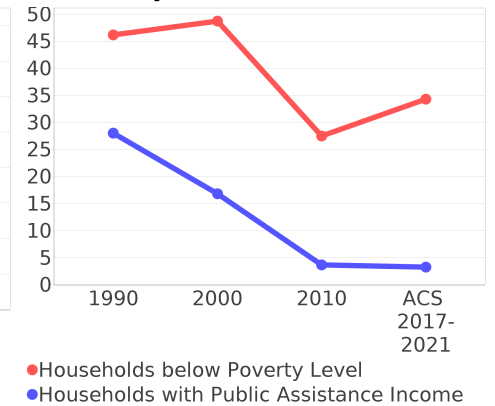
Age 25 and Over

Description	1990	2000	2010 ¹	ACS 2017-2021
Less than 9th Grade	2,044 (24.67%)	1,346 (17.88%)	695 (11.70%)	900 (10.82%)
9th to 12th Grade, No Diploma	2,925 (35.30%)	2,350 (31.21%)	995 (16.75%)	1,447 (17.40%)
High School Graduate or Higher	3,318 (40.04%)	3,832 (50.90%)	4,249 (71.53%)	5,969 (71.78%)
Bachelor's Degree or Higher	280 (3.38%)	290 (3.85%)	377 (6.35%)	1,052 (12.65%)

Income Trends



Poverty and Public Assistance



Language Trends ⁵

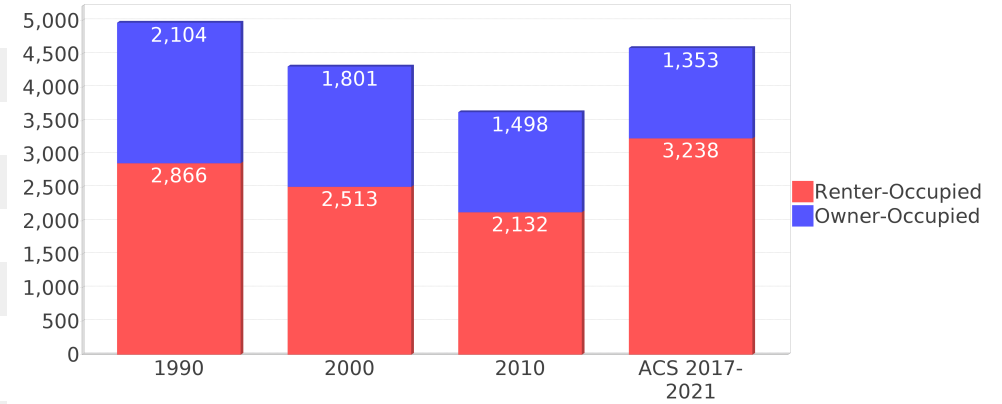
Age 5 and Over

Description	1990	2000	2010 ¹	ACS 2017-2021
Speaks English Well	561 (4.01%)	701 (5.36%)	411 (4.09%)	552 (4.23%)
Speaks English Not Well	NA (NA)	781 (5.98%)	581 (5.79%)	1,077 (8.26%)
Speaks English Not at All	NA (NA)	563 (4.31%)	749 (7.46%)	353 (2.71%)
Speaks English Not Well or Not at All	917 (6.56%)	1,344 (10.28%)	1,330 (13.25%)	1,430 (10.96%)
Speaks English Less than Very Well	NA (NA)	2,047 (15.66%)	1,742 (17.35%)	1,983 (15.20%)

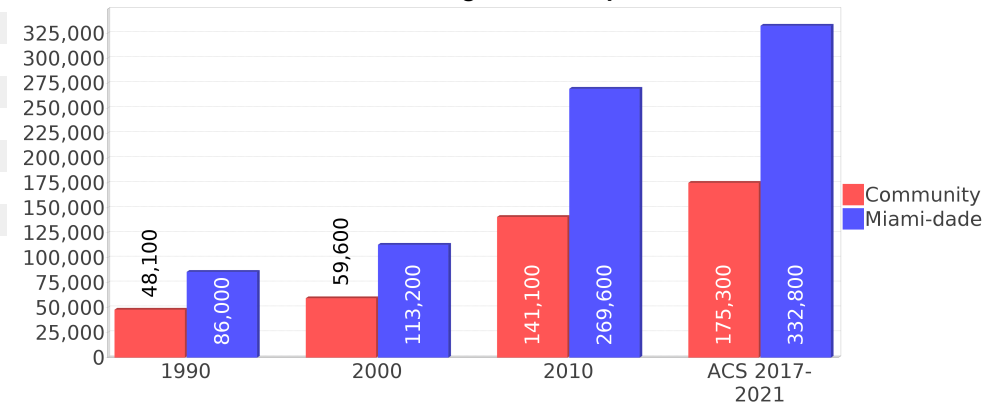
Housing Trends ⁵

Description	1990	2000	2010 ¹	ACS 2017-2021
Total	5,610	5,072	4,099	5,051
Units per Acre	5.25	4.84	4.12	3.84
Single-Family Units	2,413	2,291	2,170	2,937
Multi-Family Units	1,688	1,825	1,240	1,723
Mobile Home Units	795	945	538	391
Owner-Occupied Units	2,104	1,801	1,498	1,353
Renter-Occupied Units	2,866	2,513	2,132	3,238
Vacant Units	639	758	468	459
Median Housing Value	\$48,100	\$59,600	\$141,100	\$175,300
Occupied Housing Units w/No Vehicle	2,047 (41.18%)	1,420 (32.92%)	748 (20.60%)	862 (18.77%)

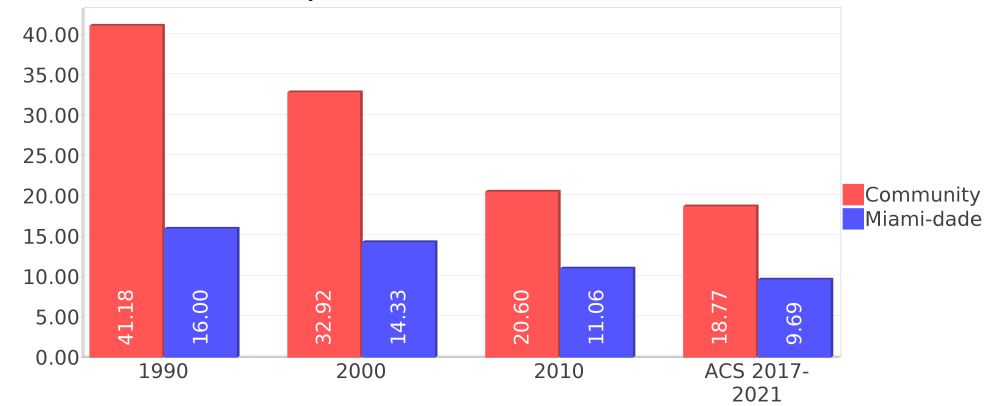
Housing Tenure



Median Housing Value Comparison



Occupied Units With No Vehicles Available



Geographic Mobility

Description	ACS 2017-2021
Median year householder moved into unit - Total	2014
Median year householder moved into unit - Owner Occupied	1997
Median year householder moved into unit - Renter Occupied	2015
Abroad 1 year ago	97
Different house in United States 1 year ago	1,544
Same house 1 year ago	12,404
Geographical Mobility in the Past Year - Total	14,046

Computers and Internet

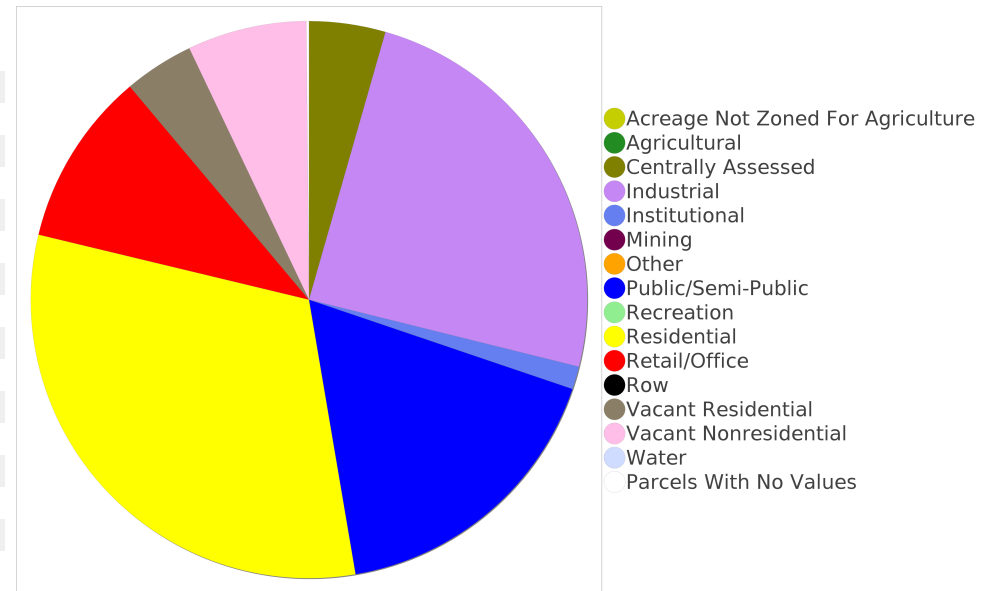
Description	ACS 2017-2021
Total Households Types of Computers in HH	4,592
Households with 1 or more device	4,107
Households with no computer	485
Total Households Presence and Types of Internet Subscriptions	4,592
Households with an internet subscription	2,843
Households with internet access without a subscription	350
Households with no internet access	1,397

Household Languages

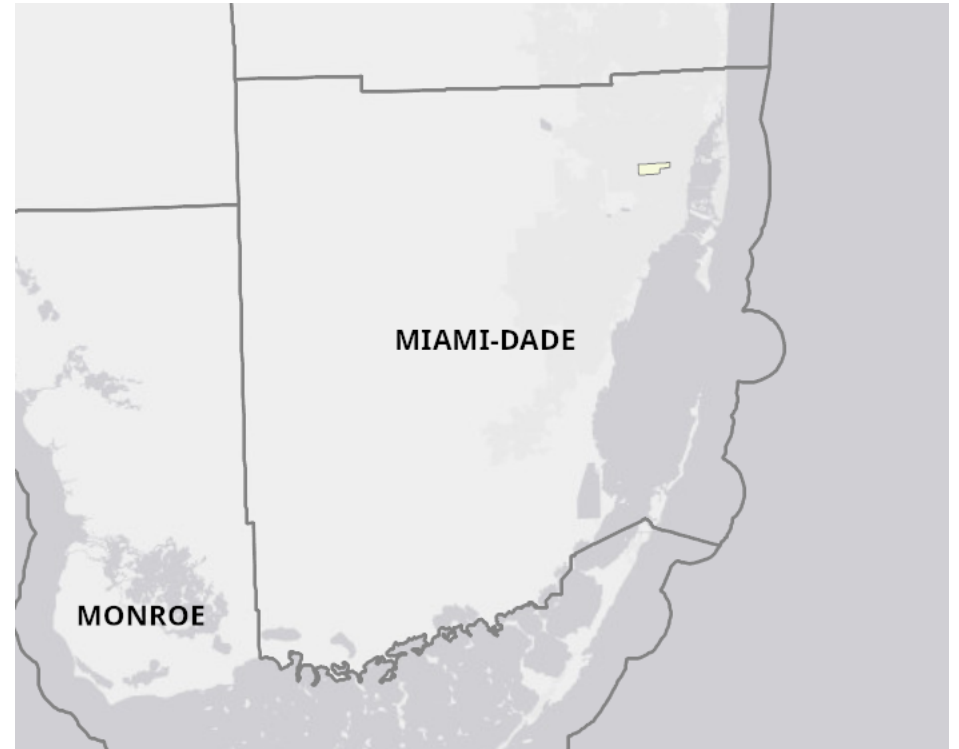
Description	ACS 2017-2021
Total Households by Household Language	4,592
Household Not Limited English Speaking Status	4,260
Spanish: Limited English speaking household	331
Indo-European languages: Limited English speaking household	0
Asian and Pacific Island languages: Limited English speaking household	0
Other languages: Limited English speaking household	0

Existing Land Use ¹⁵

Land Use Type	Acres	Percentage
Acreage Not Zoned For Agriculture	0	0.00%
Agricultural	0	0.00%
Centrally Assessed	57	3.47%
Industrial	314	19.13%
Institutional	17	1.04%
Mining	0	0.00%
Other	0	0.00%
Public/Semi-Public	220	13.40%
Recreation	0	0.00%
Residential	404	24.61%
Retail/Office	130	7.92%
Row	0	0.00%
Vacant Residential	52	3.17%
Vacant Nonresidential	89	5.42%
Water	0	0.00%
Parcels With No Values	2	0.12%



Location Maps



Community Facilities

The community facilities information below is useful in a variety of ways for environmental evaluations. These community resources should be evaluated for potential sociocultural effects, such as accessibility and relocation potential. The facility types may indicate the types of population groups present in the project study area. Facility staff and leaders can be sources of community information such as who uses the facility and how it is used. Additionally, community facilities are potential public meeting venues.

Assisted Rental Housing Units

Facility Name	Address	Zip Code
VALENCIA POINTE	7755 NW 27TH AVENUE	33147
SCOTT CARVER IIC	7343 NORTHWEST 23RD COURT	33147
SUGAR HILL	1411 NW 71ST STREET	33147
SCOTT CARVER IIA - IIB	NW 75TH ST & NW 22ND AVE	33147
HIBISCUS POINTE	1274 NW 79 ST	33147
CORINTHIAN	7705 NW 22ND AVENUE	33147
LINCOLN FIELDS APARTMENTS	2020 NW 63RD STREET	33147

Community and Fraternal Centers

Facility Name	Address	Zip Code
ELKS LODGE 1052	6525 NW 18TH AVE	33147
BOYS & GIRLS CLUB - GWEN CHERRY CLUB	7090 NW 22 AVE	33147
27TH AVENUE TEEN CENTER	6940 NW 27TH AVE	33147

Fire Department and Rescue Station Facilities

Facility Name	Address	Zip Code
MIAMI-DADE COUNTY FIRE DEPARTMENT AND RESCUE STATION 2 (MODEL CITIES)	6460 NW 27TH AVE	33147

Government Buildings

Facility Name	Address	Zip Code
U S POST OFFICE - DR MARTIN LUTHER KING JR	6700 NW 27TH AVE	33147

Florida Parks and Recreational Facilities

Facility Name	Address	Zip Code
GLADEVIEW PARK	6815 NW 31ST AVE	33147
BROADWAY PARK	6920 NW 18TH AVE	33147
NORTHWEST HIGHLANDS PARK	2361 NW 67TH ST	33147
GWEN CHERRY PARK	7090 NW 22ND AVE	33147
MIAMI-DADE COUNTY PARK - AREA 222	769 NW 73RD ST	33150
27TH AVENUE TEEN BOXING CENTER	6940 NW 27 AVE	33147

Religious Centers

Facility Name	Address	Zip Code
PEACEFUL ZION MISSIONARY BAPTIST CHURCH	2400 NORTHWEST 68TH STREET	33147
HIGHWAY CHURCH OF THE APOSTLE	2141 NW 76TH STREET	33147

Facility Name	Address	Zip Code
SAINT JAMES AFRICAN METHODIST EPISCOPAL CHURCH	1845 NORTHWEST 65TH STREET	33147
WORD OF TRUTH	1755 NW 78TH STREET	33147
EMMANUEL MISSIONARY BAPTIST	1230 NW 79TH STREET	33147
CORNERSTONE HAITIAN BAPTIST CHURCH	7194 NW 6TH CT	33150
HOUSE OF PRAYER	2445 NORTHWEST 62ND STREET	33147
HOLYGHOST FAITH TEMPLE	6225 NW 22ND AVE	33147
JEHOVAH'S WITNESSES	6900 NW 27TH AVENUE	33147
REDEMPTION MISSIONARY BAPTIST	1723 NW 78TH STREET	33147
COMMUNITY CHRISTIAN CHURCH	2229 NW 62ND STREET	33147
NEW MT CALVARY MISSIONARY	7103 NW 22ND AVENUE	33147
TABERNACLE OF THE DELIVERANCE	1945 NW 75TH STREET	33147
CHURCH OF THE HOLY GHOST	1781 NW 73RD STREET	33147
LIBERTY FELLOWSHIP OF GOD	1781 NORTHWEST 66TH STREET	33147
PILGRIM REST MISSIONARY BAPT	7510 NW 15TH AVENUE	33147
FELLOWSHIP MISSIONARY BAPTIST CHURCH	2647 NORTHWEST 65TH STREET	33147
MIGHTY THANKFUL ZION BAPTIST	759 NW 73RD STREET	33150
SOUL SAVING DISCIPLESHIP MNSTR	2275 NW 62ND STREET	33147
NEW BEGINNING MINISTRIES	7616 NW 22ND AVENUE	33147
GODS RESSURECTION MINISTRY	6601 NORTHWEST 22ND AVENUE	33147
WALKER TEMPLE CHURCH OF GOD IN CHRIST	1781 NW 69TH TERRACE	33147
HOUSE OF GOD MIRACLE TEMPLE	7590 NW 17 AVE	33147
HOLY REDEEMER ROMAN CATHOLIC CHURCH	1301 NORTHWEST 71ST STREET	33147
UNION GROVE MISSIONARY BAPTIST	2901 NW 62ND STREET	33147
SOUL SAVING MISSIONARY BAPTIST	2170 NW 76TH STREET	33147
THE HOUSE OF GOD WHICH IS THE CHURCH OF THE LIVING GOD	6917 NW 18 AVE	33147
FAITH TEMPLE CHURCH OF GOD	1520 NW 79TH STREET	33147
KELLY'S CHAPEL UNITED MTHDST	7105 NW 15TH COURT	33147
DAYSRING MISSIONARY BAPTIST	2991 NW 62ND STREET	33147
SALEM BAPTIST CHURCH	2945 NW 62ND STREET	33147
LIBERTY CHRISTIAN DISCIPLES	2455 NW 68TH STREET	33147
3:16 MINISTRIES	2356 NW 67TH STREET	33147
TRIUMPH THE CHURCH AND KINGDOM OF GOD IN CHRIST	6825 NW 20TH AVE	33147
BEREA MISSIONARY BAPTIST CHURCH	7831 NW 15TH AVENUE	33147
FIRST DELIVERANCE FELLOWSHIP	2683 NW 65TH STREET	33147
MILLROCK HOLY MISSIONARY BAPTIST CHURCH	2575 NW 65TH ST	33147
ST ANNE'S AFRICAN ORTHODOX CHURCH	2485 NW 65TH STREET	33147
MIRACLE VALLEY PRAISE & WORSHIP CENTER	1930 NW 70 ST	33147
ANTIOCH BAPTIST CHURCH	1899 NORTHWEST 64TH STREET	33147
METROPOLITAN AME CHURCH	1778 NW 69TH STREET	33147
RAINBOW MIRACLE MINISTRY	7169 NW 17 AVE	33147

Public Schools

Facility Name	Address	Zip Code
MIAMI GIRLS ACADEMY	6300 NW 27TH AVE	33147
PATH ACADEMY	6300 NW 27TH AVE	33147
POINCIANA PARK ELEMENTARY SCHOOL	6745 NW 23RD AVE	33147
LILLIE C. EVANS K-8 CENTER	1895 NW 75TH ST	33147
D.A. DORSEY TECHNICAL COLLEGE	7100 NW 17TH AVE	33147
KIPP MIAMI-LIBERTY CITY	6745 NW 23RD AVE	33147
KIPP MIAMI SUNRISE ACADEMY	6745 NW 23 AVE	33147
MARTIN LUTHER KING ELEMENTARY SCHOOL	7124 NW 12TH AVE	33147
LIBERTY CITY ELEMENTARY SCHOOL	1855 NW 71ST ST	33147
SECONDARY STUDENT SUCCESS CENTER-804	7100 NW 17TH AVE	33147
ALTERNATIVE OUTREACH PROGRAM	6300 NW 27TH AVE	33147

Mobile Home Parks

Facility Name	Address	Zip Code
NEW AVOCADO TRAILER PARK, INC.	1170 NW 79TH ST	33150
MIAMI HEIGHTS MOTEL AND TP	3520 NW 79TH ST	33147
PALM LAKE MOBILE HOME PARK	7600 NW 27TH AVE	33147
J BAR J TRAILER RANCH	2980 NW 79TH ST	33147
TROPICAL MOBILE HOME PARK	1398 NW 79TH ST	33150

Group Care Facilities

Facility Name	Address	Zip Code
D.A. DORSEY EDUCATIONAL CENTER	7100 NW 17TH AVENUE	33147
B&G PRESCHOOL	7879 NW 27 AVENUE	33147
NEW DIRECTION- RESIDENTIAL PROGRAM	3140 NW 76 STREET	33147
POINCIANA PARK ELEM.	6745 NW 23 AVENUE	33147
FACES LEARNING ACADEMY	6427 NW 18TH AVENUE. B	33147
IT'S A SMALL WORLD LEARNING CENTER IV	6565 NW 32 AVENUE	33147
ALPHA EDUCATIONAL CENTER	2975 NW 62 STREET	33147
LIBERTY CITY ELEM	1855 NW 71 STREET	33147
MERRY POPPINS KINDERGARTEN	6427 NW 18 AVENUE	33147
LILLIE C. EVANS ELEM. SCHOOL	1895 NW 75 STREET	33147
SHARON'S SENIOR SERVICES	2270 NW 64 STREET	33147
LIBERTY ACADEMY	7750 NW 12 AVENUE	33150

Block Groups

The following Census Block Groups were used to calculate demographics for this report.

1990 Census Block Groups

120250010044, 120250009024, 120250017011, 120250010033, 120250010046, 120250010045, 120250009033, 120250018015, 120250009031, 120250010032, 120250010041, 120250010042, 120250010043, 120250009032, 120250015022, 120250010022, 120250010021, 120250009025, 120250009034, 120250010048, 120250015023, 120250010047, 120250015021

2000 Census Block Groups

120860017011, 120860018015, 120860009034, 120860009031, 120860015021, 120860018011, 120860015014, 120860010043, 120860010045, 120860009025, 120860010032, 120860019011, 120860010047, 120860010022, 120860010044, 120860015011, 120860010042, 120860010041, 120860009032, 120860015023, 120860015022, 120860009033, 120860009024, 120860010033, 120860010048, 120860010046, 120860010021

2010 Census Block Groups

120860010042, 120860009032, 120860017013, 120860010022, 120860015011, 120860019011, 120860010044, 120860009033, 120860015023, 120860010043, 120860018011, 120860009025, 120860009031, 120860010023, 120860010041, 120860010033, 120860018013, 120860015022, 120860010032, 120860010045, 120860015021

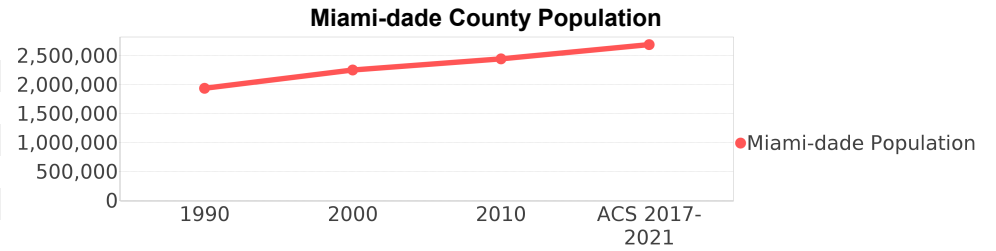
Census Block Groups

120860017013, 120860010045, 120860015022, 120860015011, 120860010033, 120860018011, 120860010041, 120860009042, 120860010072, 120860009041, 120860010043, 120860010081, 120860019011, 120860009032, 120860010044, 120860015021, 120860009031, 120860015023, 120860018013, 120860010032, 120860010042

Miami-dade County Demographic Profile

General Population Trends - Miami-dade ⁵

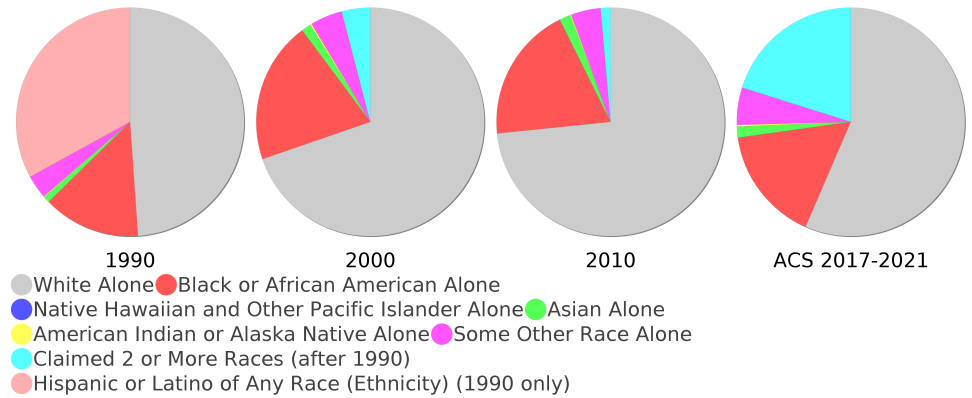
Description	1990	2000	2010 ¹	ACS 2017-2021
Total Population	1,937,094	2,253,362	2,445,374	2,690,113
Total Households	692,355	776,774	827,556	936,351
Average Persons per Acre	1.528	1.774	1.925	2.12
Average Persons per Household	2.798	2.84	3.00	2.83
Average Persons per Family	3.413	3.488	3.591	3.54
Males	928,411	1,086,558	1,182,784	1,316,112



Race and Ethnicity Trends - Miami-dade ^{5, 8, 9}

Description	1990	2000	2010 ¹	ACS 2017-2021
White Alone	1,413,015 (72.95%)	1,570,990 (69.72%)	1,794,730 (73.39%)	1,520,002 (56.50%)
Black or African American Alone	397,993 (20.55%)	452,333 (20.07%)	470,326 (19.23%)	438,019 (16.28%)
Native Hawaiian and Other Pacific Islander Alone	(NA)	605 (0.03%)	649 (0.03%)	531 (0.02%)
Asian Alone	25,869 (1.34%)	30,692 (1.36%)	38,813 (1.59%)	41,628 (1.55%)
American Indian or Alaska Native Alone	3,066 (0.16%)	4,841 (0.21%)	3,572 (0.15%)	6,065 (0.23%)
Some Other Race Alone	96,713 (4.99%)	102,436 (4.55%)	102,938 (4.21%)	142,274 (5.29%)
Claimed 2 or More Races	(NA)	91,465 (4.06%)	34,346 (1.40%)	541,594 (20.13%)
Hispanic or Latino of Any Race (Ethnicity)	953,407 (49.22%)	1,291,681 (57.32%)	1,565,410 (64.02%)	1,842,914 (68.51%)
Not Hispanic or Latino (Ethnicity)	983,687 (50.78%)	961,681 (42.68%)	879,964 (35.98%)	847,199 (31.49%)
Minority (Race and Ethnicity)	1,351,487 (69.77%)	1,787,468 (79.32%)	2,112,884 (86.40%)	2,333,441 (86.74%)

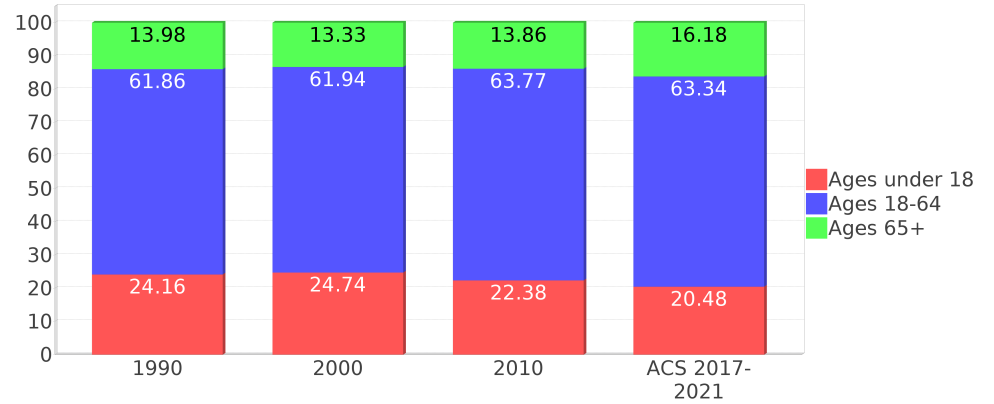
Miami-dade County Race



Age Trends - Miami-dade ⁵

Description	1990	2000	2010 ¹	ACS 2017-2021
Under Age 5	7.21%	6.43%	6.20%	5.69%
Ages 5-17	16.95%	18.31%	16.18%	14.79%
Ages 18-21	5.60%	5.24%	5.83%	4.69%
Ages 22-29	13.10%	10.97%	10.98%	10.34%
Ages 30-39	16.06%	16.33%	14.14%	13.90%
Ages 40-49	12.47%	14.49%	15.67%	14.28%
Ages 50-64	14.63%	14.90%	17.15%	20.13%
Age 65 and Over	13.98%	13.33%	13.86%	16.18%
-Ages 65-74	7.54%	7.23%	7.34%	8.84%
-Ages 75-84	4.88%	4.41%	4.71%	5.01%
-Age 85 and Over	1.55%	1.69%	1.81%	2.32%
Median Age	NA	36	38	40.4

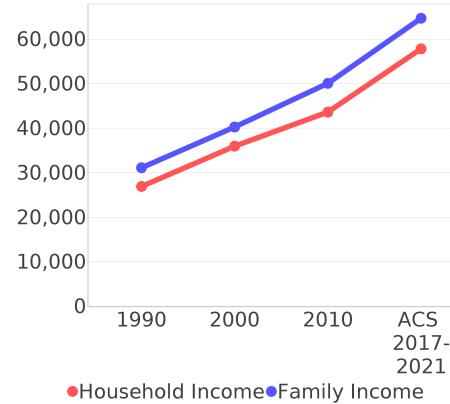
Percentage Population by Age Group - Miami-dade



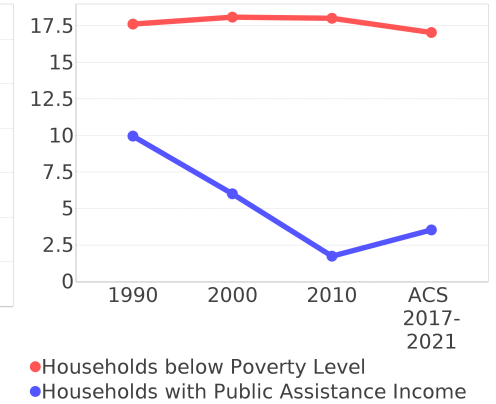
Income Trends - Miami-dade ⁵

Description	1990	2000	2010 ¹	ACS 2017-2021
Median Household Income	\$26,909	\$35,966	\$43,605	\$57,815
Median Family Income	\$31,113	\$40,260	\$50,065	\$64,690
Population below Poverty Level	17.94%	17.97%	17.18%	15.68%
Households below Poverty Level	17.62%	18.10%	18.02%	17.05%
Households with Public Assistance Income	9.96%	6.01%	1.74%	3.53%

Income Trends



Poverty and Public Assistance



Disability Trends - Miami-dade ¹⁰

See the Data Sources section below for an explanation about the differences in disability data among the various years.

Description	1990	2000	2010 ¹	ACS 2017-2021
Population 16 To 64 Years with a disability	78,949 (5.28%)	324,062 (15.60%)	NA (NA)	NA (NA)
Population 20 To 64 Years with a disability	NA (NA)	NA (NA)	NA (NA)	108,936 (6.71%)

Educational Attainment Trends - Miami-dade ^{11, 5}

Age 25 and Over

Description	1990	2000	2010 ¹	ACS 2017-2021
Less than 9th Grade	228,426 (17.83%)	219,066 (14.68%)	202,413 (12.23%)	166,277 (8.67%)
9th to 12th Grade, No Diploma	219,856 (17.16%)	260,287 (17.45%)	178,335 (10.77%)	169,424 (8.84%)
High School Graduate or Higher	833,013 (65.01%)	1,012,436 (67.87%)	1,274,809 (77.00%)	1,581,464 (82.49%)
Bachelor's Degree or Higher	240,460 (18.77%)	323,399 (21.68%)	434,574 (26.25%)	608,670 (31.75%)

Language Trends - Miami-dade ⁵

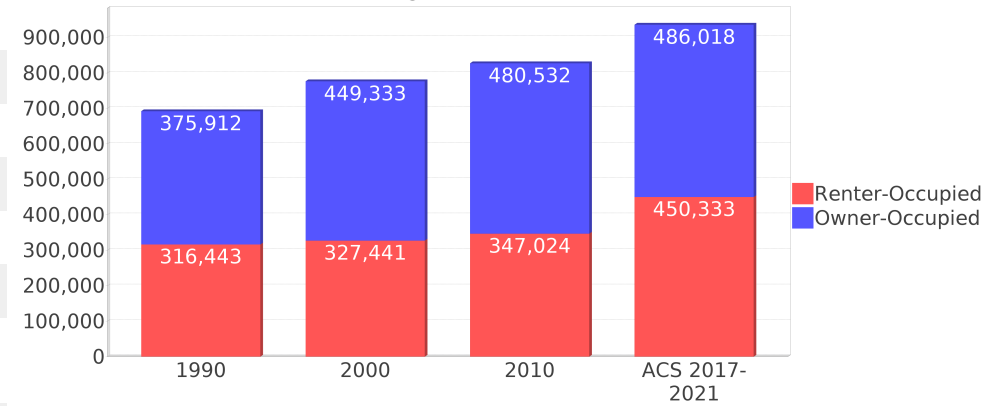
Age 5 and Over

Description	1990	2000	2010 ¹	ACS 2017-2021
Speaks English Well	221,943 (12.34%)	285,783 (13.55%)	302,397 (13.18%)	341,625 (13.47%)
Speaks English Not Well	NA (NA)	261,782 (12.42%)	294,777 (12.85%)	320,339 (12.63%)
Speaks English Not at All	NA (NA)	184,249 (8.74%)	217,650 (9.49%)	200,485 (7.90%)
Speaks English Not Well or Not at All	341,005 (18.96%)	446,031 (21.15%)	512,427 (22.34%)	520,824 (20.53%)
Speaks English Less than Very Well	NA (NA)	731,814 (34.71%)	814,824 (35.52%)	862,449 (33.99%)

Housing Trends - Miami-dade ⁵

Description	1990	2000	2010 ¹	ACS 2017-2021
Total	771,288	852,278	980,580	1,064,991
Units per Acre	0.608	0.671	0.772	0.84
Single-Family Units	365,600	448,569	508,364	527,957
Multi-Family Units	301,870	387,550	457,465	522,689
Mobile Home Units	15,359	15,338	14,234	13,865
Owner-Occupied Units	375,912	449,333	480,532	486,018
Renter-Occupied Units	316,443	327,441	347,024	450,333
Vacant Units	78,933	75,504	153,024	128,640
Median Housing Value	\$86,000	\$113,200	\$269,600	\$332,800
Occupied Housing Units w/No Vehicle	110,809 (16.00%)	111,323 (14.33%)	91,558 (11.06%)	90,753 (9.69%)
Median year householder moved into unit - Total	NA	NA	NA	2013
Median year householder moved into unit - Owner Occupied	NA	NA	NA	2006
Median year householder moved into unit - Renter Occupied	NA	NA	NA	2016
Abroad 1 year ago	NA	NA	NA	38,698
Different house in United States 1 year ago	NA	NA	NA	277,854
Same house 1 year ago	NA	NA	NA	2,345,253
Geographical Mobility in the Past Year - Total	NA	NA	NA	2,345,253

Housing Tenure - Miami-dade



Data Sources

ACS vs Census Data

(1) The 2010 Census data is represented by a combination of decennial and ACS (2006-2010) data. The General Population Trends, Race and Ethnicity Trends, Age Trends are entirely from decennial. The Income Trends, Language Trends are entirely from the ACS. The Housing Trends section is derived from both: Decennial (Total # Housing Units, Housing Units per Acre, Owner-Occupied Units, Renter-Occupied Units, Vacant Units); ACS (Single Family Units, Multi-family Units, Mobile Homes, Median Housing Value, Occupied Housing Units w/No Vehicle).

Area

(2) The geographic area of the community based on a user-defined community boundary or area of interest (AOI) boundary.

Jurisdiction

(3) Jurisdiction(s) includes local government boundaries that intersect the user-defined community or AOI boundary.

Goals, Values and History

(4) Information under the headings Goals and Values and History is entered manually by the user before the Sociocultural Data Report (SDR) is generated. This information is usually not available for communities with boundaries that are based on Census-defined places (i.e., not user-specified).

Demographic Data

(5) Demographic data reported under the headings General Population Trends, Race and Ethnicity Trends, Age Trends, Income Trends, Educational Attainment Trends, Language Trends, and Housing Trends is from the U.S. Decennial Census for 1990 and 2000 and the American Community Survey (ACS) 5-year estimates for 2006-2010 and ACS 2017-2021. The data was gathered at the block group level for user-defined communities, Census places, and AOIs, and at the county level for counties. Depending on the dataset, the data represents 100% counts (Census Summary File 1) or sample-based information (Census Summary File 3 or ACS). For more information about using demographic data, please see the training videos located here: <https://www.fdot.gov/environment/pubs/sce/sce1.shtm>.

About the Census Data

(6) The block group analysis for ETDM project analysis areas, user-defined communities, Census places, and AOI boundaries do not always correspond precisely to block group boundaries. To estimate the actual population more accurately, the SDR analysis adjusts the geographic area and data of affected block groups using the following methodology:

Delete overlapping census blocks with extremely low populations (2 or fewer people)
Remove the portion of the block group that lies outside of the analysis area
Recalculate the demographics assuming an equal area distribution of the population

Note that there may be areas where there is no population.

(7) Use caution when comparing the 100% count data (Decennial Census) to the sample-based data (ACS). In any given year, about one in 40 U.S. households will receive the ACS questionnaire. Over any five-year period, about one in eight households will receive the questionnaire, as compared to about one in six that received the long form questionnaire for the Decennial Census 2000. (Source: https://www.census.gov/content/dam/Census/programs-surveys/acs/news/10ACS_keyfacts.pdf) The U.S. Census Bureau provides help with this process: <https://www.census.gov/programs-surveys/acs/guidance/comparing-acs-data.html>

(8) Race and ethnicity are separate questions on the Census questionnaire. Individuals can report multiple race and ethnicity answers; therefore, numbers in the Race and Ethnicity portion of this report may add up to be greater than the total population. In addition, use caution when interpreting changes in race and ethnicity over time. Starting with the 2000 Decennial Census, respondents could select one or more race categories. Also in 2000, the placement of the question about Hispanic origin changed, helping to increase responsiveness to the Hispanic-origin question. Because of these and other changes, the 1990 data on race and ethnicity are not directly comparable with data from later censuses. (Source: <https://www.census.gov/library/publications/2001/dec/c2kbr01-01.html>)

(9) The "Minority" calculations use both the race and ethnicity responses from Census and ACS data. In this report, "Minority" refers to individuals who list a race other than White and/or list their ethnicity as Hispanic/Latino. In other words, people who are multi-racial, any single race other than White, or Hispanic/Latino of any race are considered minorities. We use the following formula: $MINORITY = TOTALPOP - WHITE_NH$ where TOTALPOP is the Total Population and WHITE_NH is the population with a race of White alone and an ethnicity of Not Hispanic or Latino. Translating this to the field names used in the census ACS source data, the formula looks like this: $MINORITY = B01003_E001 - B03002_E003$. (Note, the WHITE_NH population is not reported separately in this report.)

(10) Disability data is not included in the 2010 Decennial Census or the 2006-2010 ACS. This data is available in the ACS 2017-2021 ACS. Because of changes made to the Census and ACS questions between 1990 and ACS, disability variables should not be compared from year to year. For example: 1) with the 1990 data, the disabilities are listed as a "work disability" while this distinction is not made with 2000 or ACS data; 2) the ACS data includes the institutionalized population (e.g. persons in prisons and group homes) while this population is not included in 1990 or 2000; and 3) the age groupings changed over the years.

(11) The category Bachelor's Degree or Higher under the heading Educational Attainment Trends is a subset of the category High School Graduate or Higher.

(12) Income of households. This includes the income of the householder and all other individuals 15 years old and over in the household, whether they are related to the householder or not. Because many households consist of only one person, average household income is usually less than average family income.

(13) Income of families. In compiling statistics on family income, the incomes of all members 15 years old and over related to the householder are summed and treated as a single amount.

(14) Age trends. The median age for 1990 is not available.

Land Use Data

(15) The Land Use information Indicates acreages and percentages for the generalized land use types used to group parcel-specific, existing land use assigned by the county property appraiser office according to the Florida Department of Revenue land use codes.

Community Facilities Data

- (16) Assisted Rental Housing Units - Identifies multifamily rental developments that receive funding assistance under federal, state, and local government programs to offer affordable housing as reported by the Shimberg Center for Housing Studies, University of Florida.
- (17) Mobile Home Parks - Identifies approved or acknowledged mobile home parks reported by the Florida Department of Business and Professional Regulation and Florida Department of Health.
- (18) Migrant Camps - Identifies migrant labor camp facilities inspected by the Florida Department of Health.
- (19) Group Care Facilities - Identifies group care facilities inspected by the Florida Department of Health.
- (20) Community Center and Fraternal Association Facilities - Identifies facilities reported by multiple sources.
- (21) Law Enforcement Correctional Facilities - Identifies facilities reported by multiple sources.
- (22) Cultural Centers - Identifies cultural centers including organizations, buildings, or complexes that promote culture and arts (e.g., aquariums and zoological facilities; arboreta and botanical gardens; dinner theaters; drive-ins; historical places and services; libraries; motion picture theaters; museums and art galleries; performing arts centers; performing arts theaters; planetariums; studios and art galleries; and theater producers stage facilities) reported by multiple sources.
- (23) Fire Department and Rescue Station Facilities - Identifies facilities reported by multiple sources.
- (24) Government Buildings - Identifies local, state, and federal government buildings reported by multiple sources.
- (25) Health Care Facilities - Identifies health care facilities including abortion clinics, dialysis clinics, medical doctors, nursing homes, osteopaths, state laboratories/clinics, and surgicenters/walk-in clinics reported by the Florida Department of Health.
- (26) Hospital Facilities - Identifies hospital facilities reported by multiple sources.
- (27) Law Enforcement Facilities - Identifies law enforcement facilities reported by multiple sources.
- (28) Parks and Recreational Facilities - Identifies parks and recreational facilities reported by multiple sources.
- (29) Religious Center Facilities - Identifies religious centers including churches, temples, synagogues, mosques, chapels, centers, and other types of religious facilities reported by multiple sources.
- (30) Private and Public Schools - Identifies private and public schools reported by multiple sources.
- (31) Social Service Centers - Identifies social service centers reported by multiple sources.
- (32) Veteran Organizations and Facilities

County Data Sources

ACS vs Census Data

(1) The 2010 Census data is represented by a combination of decennial and ACS (2006-2010) data. The General Population Trends, Race and Ethnicity Trends, Age Trends are entirely from decennial. The Income Trends, Language Trends are entirely from the ACS. The Housing Trends section is derived from both: Decennial (Total # Housing Units, Housing Units per Acre, Owner-Occupied Units, Renter-Occupied Units, Vacant Units); ACS (Single Family Units, Multi-family Units, Mobile Homes, Median Housing Value, Occupied Housing Units w/No Vehicle).

About the Census Data

(34) Use caution when comparing the 100% count data (Decennial Census) to the sample-based data (ACS). In any given year, about one in 40 U.S. households will receive the ACS questionnaire. Over any five-year period, about one in eight households will receive the questionnaire, as compared to about one in six that received the long form questionnaire for the Decennial Census 2000. (Source: https://www.census.gov/content/dam/Census/programs-surveys/acs/news/10ACS_keyfacts.pdf) The U.S. Census Bureau provides help with this process: <https://www.census.gov/programs-surveys/acs/guidance/comparing-acs-data.html>

(35) Race and ethnicity are separate questions on the Census questionnaire. Individuals can report multiple race and ethnicity answers; therefore, numbers in the Race and Ethnicity portion of this report may add up to be greater than the total population. In addition, use caution when interpreting changes in race and ethnicity over time. Starting with the 2000 Decennial Census, respondents could select one or more race categories. Also in 2000, the placement of the question about Hispanic origin changed, helping to increase responsiveness to the Hispanic-origin question. Because of these and other changes, the 1990 data on race and ethnicity are not directly comparable with data from later censuses. (Source: <https://www.census.gov/library/publications/2001/dec/c2kbr01-01.html>)

(36) The "Minority" calculations use both the race and ethnicity responses from Census and ACS data. In this report, "Minority" refers to individuals who list a race other than White and/or list their ethnicity as Hispanic/Latino. In other words, people who are multi-racial, any single race other than White, or Hispanic/Latino of any race are considered minorities. We use the following formula: $MINORITY = TOTALPOP - WHITE_NH$ where TOTALPOP is the Total Population and WHITE_NH is the population with a race of White alone and an ethnicity of Not Hispanic or Latino. Translating this to the field names used in the census ACS source data, the formula looks like this: $MINORITY = B01003_E001 - B03002_E003$. (Note, the WHITE_NH population is not reported separately in this report.)

(37) Disability data is not included in the 2010 Decennial Census or the 2006-2010 ACS. This data is available in the ACS 2017-2021 ACS. Because of changes made to the Census and ACS questions between 1990 and ACS, disability variables should not be compared from year to year. For example: 1) with the 1990 data, the disabilities are listed as a "work disability" while this distinction is not made with 2000 or ACS data; 2) the ACS data includes the institutionalized population (e.g. persons in prisons and group homes) while this population is not included in 1990 or 2000; and 3) the age groupings changed over the years.

(38) The category Bachelor's Degree or Higher under the heading Educational Attainment Trends is a subset of the category High School Graduate or Higher.

Metadata

- (39) Community and Fraternal Centers https://etdmpub.florida-estat.org/meta/gc_communitycenter.xml
- (40) Correctional Facilities in Florida https://etdmpub.florida-estat.org/meta/gc_correctional.xml
- (41) Cultural Centers in Florida https://etdmpub.florida-estat.org/meta/gc_culturecenter.xml
- (42) Fire Department and Rescue Station Facilities in Florida https://etdmpub.florida-estat.org/meta/gc_firestat.xml
- (43) Local, State, and Federal Government Buildings in Florida https://etdmpub.florida-estat.org/meta/gc_govbuild.xml
- (44) Florida Health Care Facilities https://etdmpub.florida-estat.org/meta/gc_health.xml
- (45) Hospital Facilities in Florida https://etdmpub.florida-estat.org/meta/gc_hospitals.xml
- (46) Law Enforcement Facilities in Florida https://etdmpub.florida-estat.org/meta/gc_lawenforce.xml
- (47) Florida Parks and Recreational Facilities https://etdmpub.florida-estat.org/meta/gc_parks.xml
- (48) Religious Centers https://etdmpub.florida-estat.org/meta/gc_religion.xml
- (49) Florida Public and Private Schools https://etdmpub.florida-estat.org/meta/gc_schools.xml
- (50) Social Service Centers https://etdmpub.florida-estat.org/meta/gc_socialservice.xml
- (51) Assisted Rental Housing Units in Florida https://etdmpub.florida-estat.org/meta/gc_assisted_housing.xml
- (52) Group Care Facilities <https://etdmpub.florida-estat.org/meta/groupcare.xml>
- (53) Mobile Home Parks in Florida https://etdmpub.florida-estat.org/meta/gc_mobilehomes.xml
- (54) Migrant Camps in Florida <https://etdmpub.florida-estat.org/meta/migrant.xml>
- (55) Veteran Organizations and Facilities https://etdmpub.florida-estat.org/meta/gc_veterans.xml
- (56) Generalized Land Use https://etdmpub.florida-estat.org/meta/lu_gen.xml
- (57) Census Block Groups in Florida https://etdmpub.florida-estat.org/meta/e2_cenacs_cci.xml
- (58) 1990 Census Block Groups in Florida https://etdmpub.florida-estat.org/meta/e2_cenblkgrp_1990_cci.xml
- (59) 2000 Census Block Groups in Florida https://etdmpub.florida-estat.org/meta/e2_cenblkgrp_2000_cci.xml
- (60) 2010 Census Block Groups in Florida https://etdmpub.florida-estat.org/meta/e2_cenblkgrp_2010_cci.xml