

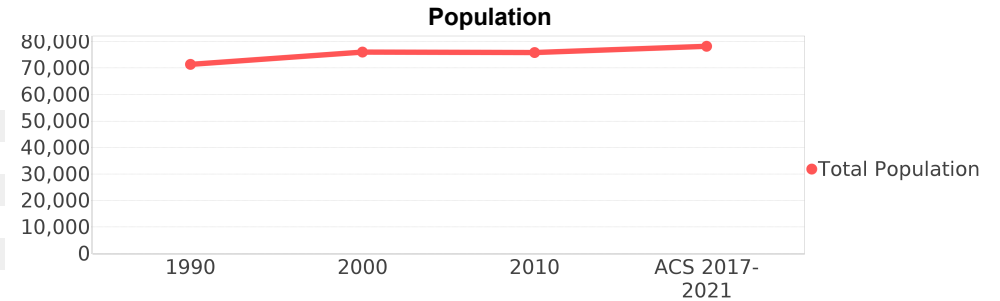
## Kendall (CDP)

Area: 2 16.603 square miles  
 Jurisdiction - Cities: 3 NA  
 Jurisdiction - Counties: 3 Miami-Dade



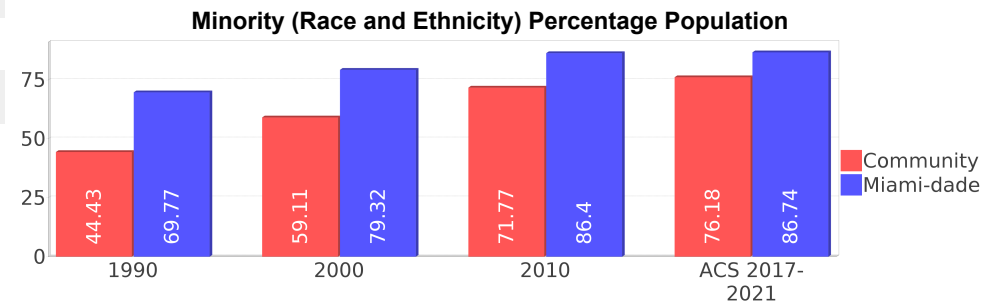
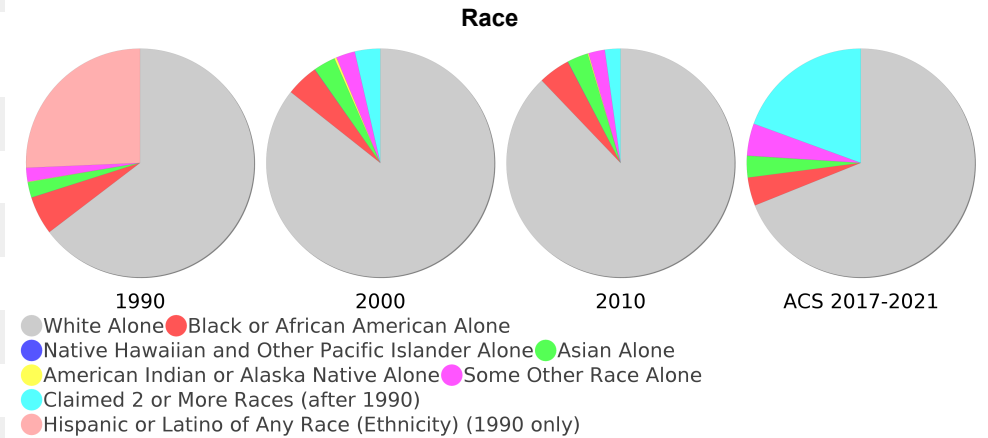
### General Population Trends

Description	1990	2000	2010 <sup>1</sup>	ACS 2017-2021
Total Population	71,386	76,044	75,837	78,211
Total Households	27,282	28,682	29,279	29,258
Average Persons per Acre	7.37	8.68	12.95	14.05
Average Persons per Household	2.76	2.85	2.83	2.72
Average Persons per Family	3.24	3.30	3.09	3.29
Males	33,979	35,585	35,198	37,034
Females	37,406	40,458	40,638	41,176



### Race and Ethnicity Trends <sup>5, 8, 9</sup>

Description	1990	2000	2010 <sup>1</sup>	ACS 2017-2021
White Alone	62,091 (86.98%)	65,121 (85.64%)	66,618 (87.84%)	53,911 (68.93%)
Black or African American Alone	5,220 (7.31%)	3,489 (4.59%)	3,384 (4.46%)	3,133 (4.01%)
Native Hawaiian and Other Pacific Islander Alone	21 (0.03%)	25 (0.03%)	28 (0.04%)	0 (0.00%)
Asian Alone	2,092 (2.93%)	2,390 (3.14%)	2,262 (2.98%)	2,389 (3.05%)
American Indian or Alaska Native Alone	76 (0.11%)	241 (0.32%)	106 (0.14%)	22 (0.03%)
Some Other Race Alone	1,883 (2.64%)	2,027 (2.67%)	1,750 (2.31%)	3,553 (4.54%)
Claimed 2 or More Races	NA (NA)	2,748 (3.61%)	1,686 (2.22%)	15,200 (19.43%)
Hispanic or Latino of Any Race (Ethnicity)	24,668 (34.56%)	38,210 (50.25%)	48,442 (63.88%)	52,286 (66.85%)
Not Hispanic or Latino (Ethnicity)	46,718 (65.44%)	37,834 (49.75%)	27,395 (36.12%)	25,925 (33.15%)
Minority (Race and Ethnicity)	31,714 (44.43%)	44,950 (59.11%)	54,428 (71.77%)	59,585 (76.18%)



## Age Trends <sup>5</sup>

Description	1990	2000	2010 <sup>1</sup>	ACS 2017-2021
Under Age 5	6.79%	5.87%	5.01%	5.22%
Ages 5-17	16.66%	17.30%	15.36%	14.92%
Ages 18-21	5.63%	4.65%	4.96%	3.66%
Ages 22-29	14.49%	10.84%	10.74%	11.15%
Ages 30-39	18.75%	16.32%	12.77%	12.55%
Ages 40-49	16.00%	16.66%	15.51%	13.26%
Ages 50-64	12.62%	16.82%	20.61%	20.37%
Age 65 and Over	9.04%	11.53%	15.02%	18.87%
-Ages 65-74	5.25%	6.39%	8.05%	9.52%
-Ages 75-84	2.80%	3.75%	4.85%	5.83%
-Age 85 and Over	0.99%	1.39%	2.12%	3.53%
Median Age	NA	37	42	43

## Income Trends <sup>12, 13, 5</sup>

Description	1990	2000	2010 <sup>1</sup>	ACS 2017-2021
Median Household Income	\$44,167	\$60,811	\$67,723	\$96,654
Median Family Income	\$51,677	\$68,250	\$79,261	\$102,202
Population below Poverty Level	7.49%	8.60%	9.08%	10.13%
Households below Poverty Level	7.54%	8.95%	8.46%	11.38%
Households with Public Assistance Income	3.03%	1.64%	0.75%	2.40%

## Disability Trends <sup>10</sup>

See the [Data Sources](#) section below for an explanation about the differences in disability data among the various years.

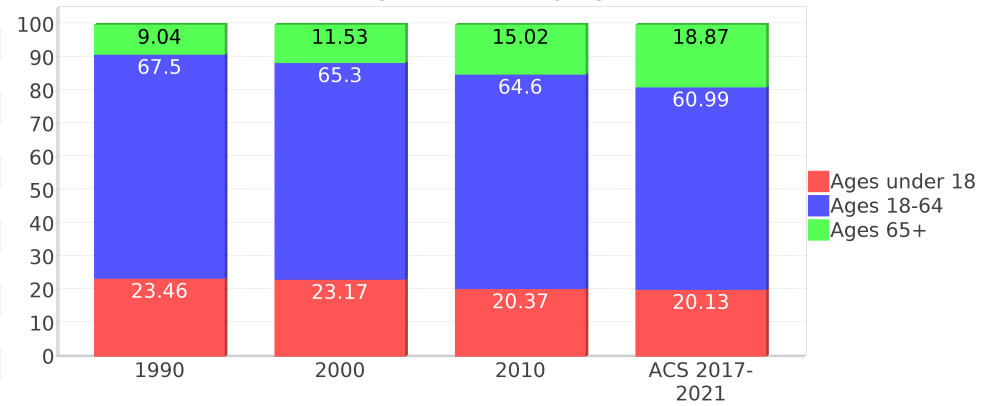
Description	1990	2000	2010 <sup>1</sup>	ACS 2017-2021
Population 16 To 64 Years with a disability	1958 (3.51%)	7901 (11.11%)	(NA)	(NA)
Population 20 To 64 Years with a disability	(NA)	(NA)	(NA)	2042 (4.40%)

## Educational Attainment Trends <sup>11, 5</sup>

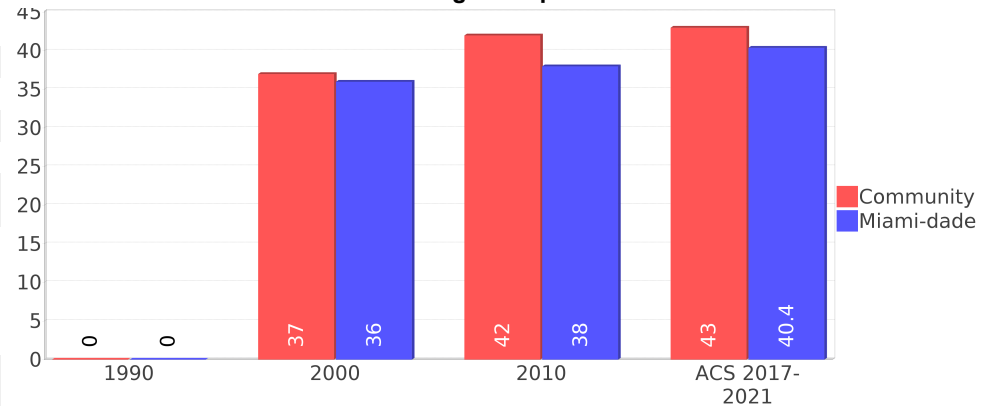
Age 25 and Over

Description	1990	2000	2010 <sup>1</sup>	ACS 2017-2021
Less than 9th Grade	1,922 (4.07%)	2,325 (4.47%)	2,674 (5.01%)	1,619 (2.84%)
9th to 12th Grade, No Diploma	3,165 (6.70%)	3,672 (7.06%)	3,433 (6.43%)	2,291 (4.02%)
High School Graduate or Higher	42,163 (89.23%)	46,027 (88.47%)	47,294 (88.56%)	53,066 (93.14%)
Bachelor's Degree or Higher	18,612 (39.39%)	21,063 (40.49%)	22,050 (41.29%)	25,299 (44.40%)

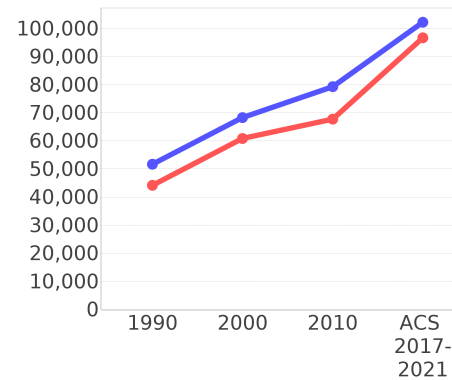
Percentage Population by Age Group



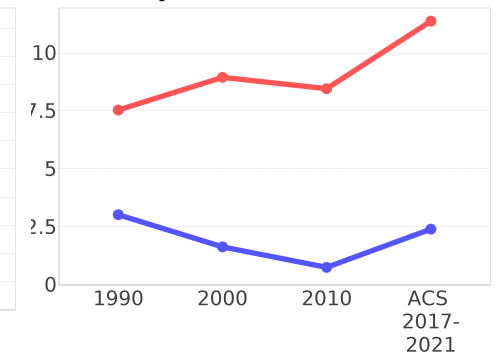
Median Age Comparison



Income Trends



Poverty and Public Assistance



## Language Trends <sup>5</sup>

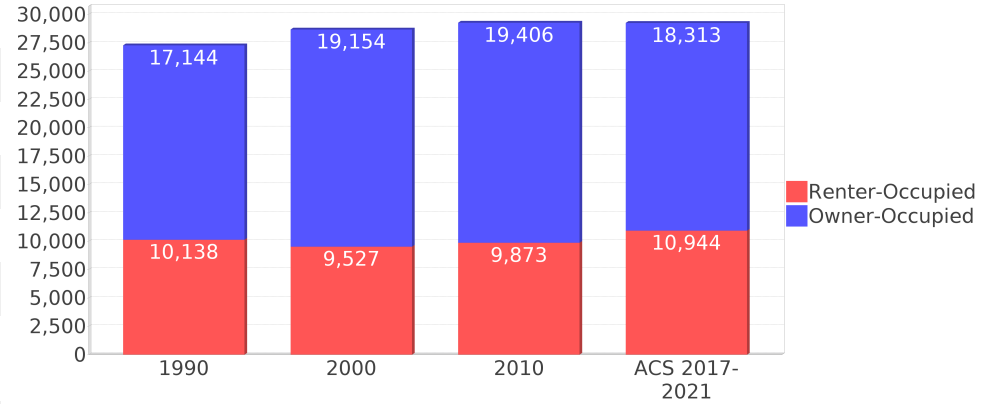
Age 5 and Over

Description	1990	2000	2010 <sup>1</sup>	ACS 2017-2021
Speaks English Well	6,053 (9.15%)	8,596 (12.01%)	8,935 (12.27%)	9,995 (13.48%)
Speaks English Not Well	NA (NA)	5,229 (7.31%)	6,608 (9.07%)	5,093 (6.87%)
Speaks English Not at All	NA (NA)	2,217 (3.10%)	2,483 (3.41%)	2,251 (3.04%)
Speaks English Not Well or Not at All	4,435 (6.70%)	7,446 (10.40%)	9,091 (12.48%)	7,344 (9.91%)
Speaks English Less than Very Well	NA (NA)	16,043 (22.41%)	18,027 (24.75%)	17,339 (23.39%)

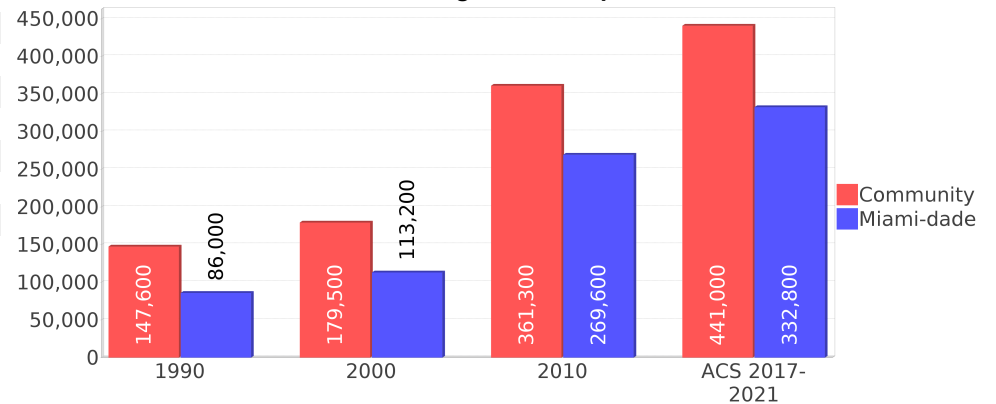
## Housing Trends <sup>5</sup>

Description	1990	2000	2010 <sup>1</sup>	ACS 2017-2021
Total	29,338	29,868	32,073	31,629
Units per Acre	3.09	3.15	3.56	3.26
Single-Family Units	16,365	17,724	18,222	17,479
Multi-Family Units	10,652	12,106	12,471	13,998
Mobile Home Units	8	37	31	148
Owner-Occupied Units	17,144	19,154	19,406	18,313
Renter-Occupied Units	10,138	9,527	9,873	10,944
Vacant Units	2,056	1,186	2,794	2,371
Median Housing Value	\$147,600	\$179,500	\$361,300	\$441,000
Occupied Housing Units w/No Vehicle	1,256 (4.60%)	1,967 (6.86%)	1,492 (5.10%)	1,538 (5.26%)

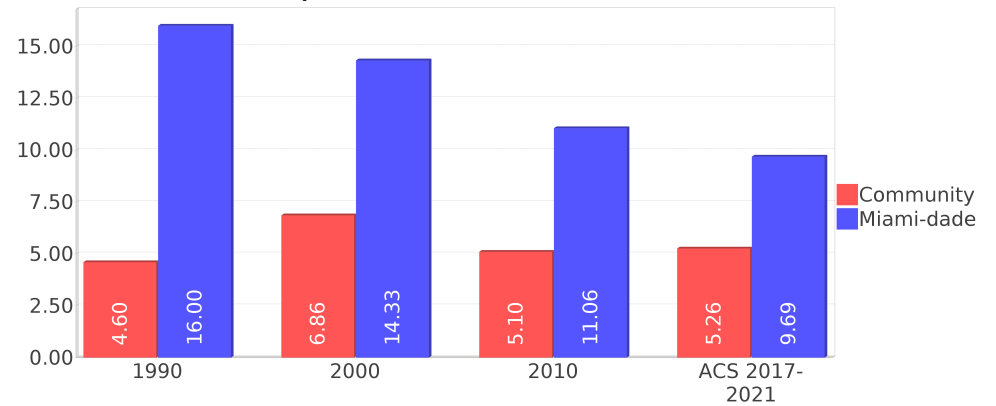
## Housing Tenure



## Median Housing Value Comparison



## Occupied Units With No Vehicles Available



## Geographic Mobility

Description	ACS 2017-2021
Median year householder moved into unit - Total	2010
Median year householder moved into unit - Owner Occupied	2005
Median year householder moved into unit - Renter Occupied	2015
Abroad 1 year ago	437
Different house in United States 1 year ago	8,852
Same house 1 year ago	67,978
Geographical Mobility in the Past Year - Total	77,268

## Computers and Internet

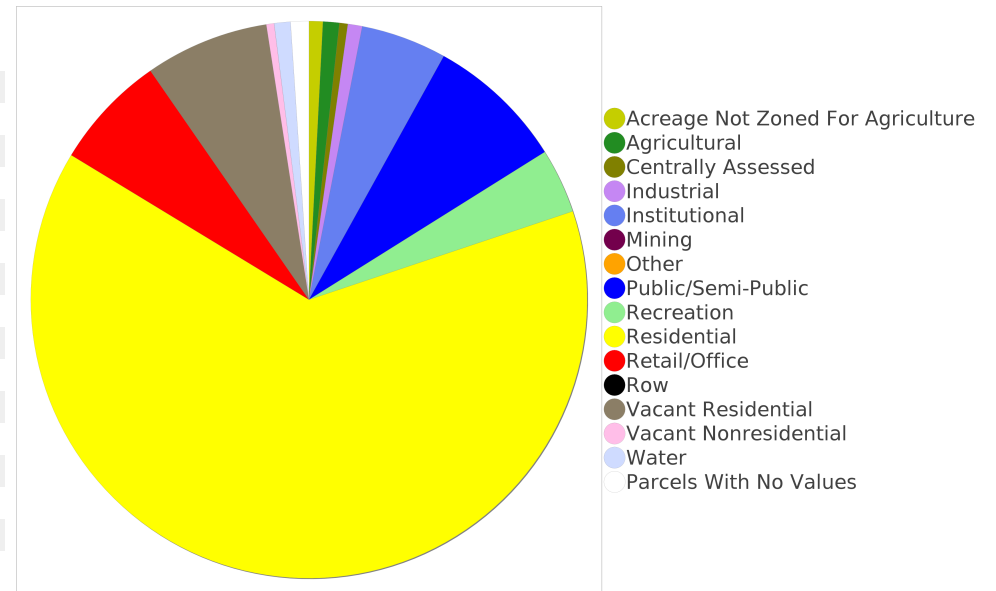
Description	ACS 2017-2021
Total Households Types of Computers in HH	29,258
Households with 1 or more device	28,196
Households with no computer	1,061
Total Households Presence and Types of Internet Subscriptions	29,258
Households with an internet subscription	26,270
Households with internet access without a subscription	1,181
Households with no internet access	1,806

## Household Languages

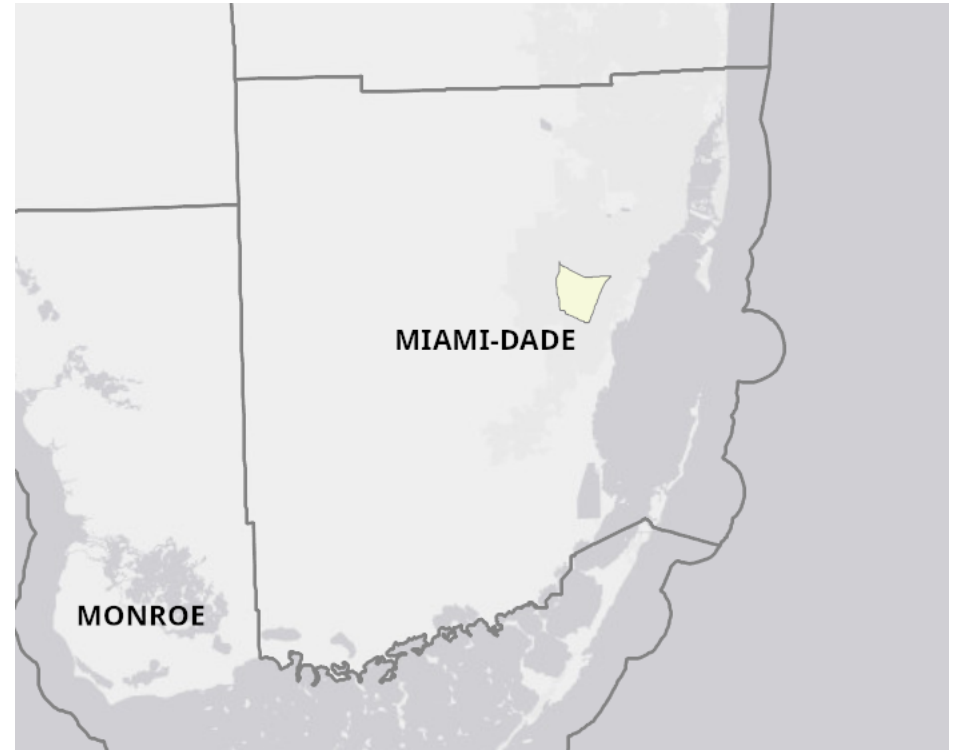
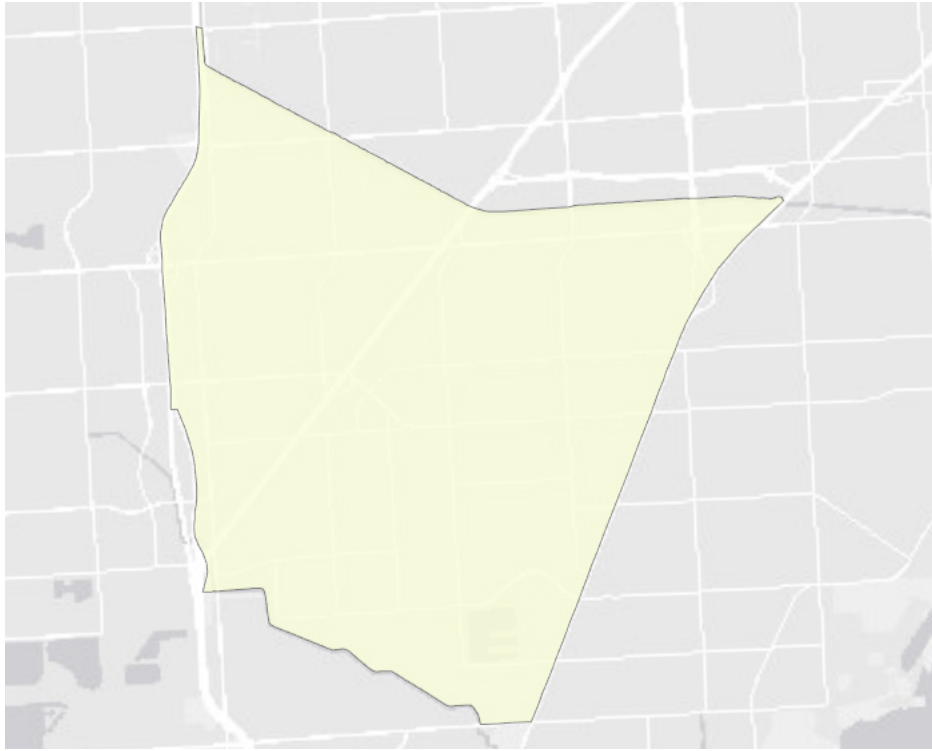
Description	ACS 2017-2021
Total Households by Household Language	29,258
Household Not Limited English Speaking Status	24,639
Spanish: Limited English speaking household	4,347
Indo-European languages: Limited English speaking household	67
Asian and Pacific Island languages: Limited English speaking household	183
Other languages: Limited English speaking household	21

## Existing Land Use <sup>15</sup>

Land Use Type	Acres	Percentage
Acreage Not Zoned For Agriculture	72	0.68%
Agricultural	85	0.80%
Centrally Assessed	43	0.40%
Industrial	75	0.71%
Institutional	447	4.21%
Mining	0	0.00%
Other	0	0.00%
Public/Semi-Public	721	6.79%
Recreation	337	3.17%
Residential	5,720	53.83%
Retail/Office	597	5.62%
Row	0	0.00%
Vacant Residential	645	6.07%
Vacant Nonresidential	41	0.39%
Water	84	0.79%
Parcels With No Values	95	0.89%



## Location Maps



## Community Facilities

The community facilities information below is useful in a variety of ways for environmental evaluations. These community resources should be evaluated for potential sociocultural effects, such as accessibility and relocation potential. The facility types may indicate the types of population groups present in the project study area. Facility staff and leaders can be sources of community information such as who uses the facility and how it is used. Additionally, community facilities are potential public meeting venues.

### Assisted Rental Housing Units

Facility Name	Address	Zip Code
FEDERATION GARDENS II	10911 SW 112TH AVE	33176
COLLEGE PARK TOWERS	10700 SW 109TH CT	33176
FEDERATION GARDENS I	10905 SW 112TH AVE	33176

### Community and Fraternal Centers

Facility Name	Address	Zip Code
ASSOCIATION FOR RETARDED CITIZENS (ARC) - MIAMI-DADE COUNTY	11025 SW 84TH ST	33173
YMCA - GREATER MIAMI	9355 SW 134TH ST	33176
KNIGHTS OF COLUMBUS 13369 - MONSIGNOR BRYAN O WALSH	12125 SW 107TH AVE	33176
MOOSE FAMILY CENTER 1825 - WEST DADE	9900 SW 77TH AVE	33156
DAVE & MARY ALPER JEWISH COMMUNITY CENTER & B'NAI B'RITH YOUTH CENTER	11155 SW 112TH AVE	33176
BOYS & GIRLS CLUB - MIAMI	9475 N KENDALL DR	33176
KNIGHTS OF COLUMBUS 12429 - SANTA CATALINA DE SIENA	9200 SW 107TH AVE	33176

### Correctional Facilities

Facility Name	Address	Zip Code
MIAMI SUBSTANCE ABUSE TREATMENT CENTER/MIAMI YOUTH ACADEMY	10855 SW 84TH ST	33173

### Cultural Centers

Facility Name	Address	Zip Code
AMBROSIO MARTIN ART GALLERY OF OLD CUBA	10411 SW 116 ST	33176
MIAMI DADE COLLEGE - KENDALL CAMPUS LIBRARY	11011 SW 104TH ST	33176
BAPTIST HEALTH SOUTH FLORIDA - JAFFEE MEDICAL LIBRARY	8900 N KENDALL DR	33176
MIAMI DADE COLLEGE KENDALL CAMPUS ART GALLERY	11011 SW 104TH ST	33176
CITY COLLEGE-MIAMI LIBRARY	9350 S DADELAND BLVD	33156
CORAL REEF BRANCH LIBRARY	9211 CORAL REEF DR	33157
SPECIAL EVENTS	8888 SW 136TH ST	33176
KENDALL BRANCH LIBRARY	9101 SW 97TH AVE	33176
MIAMI CHILDRENS THEATRE-DAVE AND MARY ALPER JCC	11155 SW 112TH AVE	33176
SUNSET BRANCH LIBRARY	10855 SW 72ND ST	33173

### Fire Department and Rescue Station Facilities

Facility Name	Address	Zip Code
MIAMI-DADE COUNTY FIRE DEPARTMENT AND RESCUE STATION 4 (CORAL REEF)	9201 SW 152ND ST	33157
BAPTIST AIR TRANSPORT	8900 N KENDALL DR	33176

Facility Name	Address	Zip Code
MIAMI-DADE COUNTY FIRE DEPARTMENT AND RESCUE STATION 9 (KENDALL)	7777 SW 117TH AVE	33183
MIAMI-DADE COUNTY FIRE DEPARTMENT AND RESCUE STATION 23 (SUNILAND/PINECREST)	7825 SW 104TH ST	33156

## Government Buildings

Facility Name	Address	Zip Code
U S POST OFFICE - SUNSET	7501 SW 117TH AVE	33183
U S POST OFFICE - TOWN & COUNTRY POSTAL STORE	8266 MILLS DR	33283
U S POST OFFICE - SNAPPER CREEK	11000 SW 104TH ST	33176

## Hospital Facilities

Facility Name	Address	Zip Code
JACKSON SOUTH COMMUNITY HOSPITAL	9333 SW 152ND ST	33157
BAPTIST HOSPITAL OF MIAMI - BAPTIST HEALTH SOUTH FLORIDA	8900 N KENDALL DR	33176

## Law Enforcement Facilities

Facility Name	Address	Zip Code
MIAMI-DADE COLLEGE POLICE DEPARTMENT - KENDALL CAMPUS	11011 SW 104TH ST (RM 5118)	33176
MIAMI-DADE POLICE DEPARTMENT - KENDALL STATION	7707 SW 117TH AVE	33183

## Florida Parks and Recreational Facilities

Facility Name	Address	Zip Code
ROCKLAND PINELAND PRESERVE	SW 144TH ST & SW 92ND AVE	33176
KENDALL INDIAN HAMMOCKS PARK	8000 SW 107 AVE	33173
SNAPPER CREEK PARK	10280 SW 80TH ST	33173
MIAMI-DADE COUNTY PARK - AREA 47	13210 SW 105TH AVE	33176
MIAMI-DADE COUNTY PARK - AREA 313	10350 SW 132ND ST	33176
MIAMI-DADE COUNTY PARK - AREA 312	10420 SW 132ND ST	33176
PINEWOODS PARK	13181 SW 102ND AVE	33176
ROCKDALE PARK	9325 SW 146TH ST	33176
CUTLER DRAIN CANAL BOAT RAMP	SW 92ND AVE	33176
CUTLER DRAIN CANAL BOAT RAMP	SW 92ND AVE	33176
SABAL CHASE PARK	10940 SW 113TH PL	33176
RON EHMANN PARK	10995 SW 97TH AVE	33176
BOYS AND GIRLS CLUB OF MIAMI- KENDALL UNIT	9475 SW 88TH ST	33173
CONTINENTAL PARK	1000 SW 82ND AVE	33156
ROCK RIDGE PARK	10810 SW 117TH AVE	33186
MIAMI-DADE COUNTY PARK - AREA 338	13211 SW 105TH AVE	33176
BRIAR BAY LINEAR PARK	9275 SW 136TH ST	33176
BRIAR BAY GOLF COURSE	12855 SW 94 PL	33176
KENDALE PARK	9250 KENDALE BLVD	33176
CHERRY GROVE PARK	9101 SW 97TH AVE	33176
MIAMI-DADE COUNTY PARK - AREA 318	9900 SW 128TH ST	33176

Facility Name	Address	Zip Code
MIAMI-DADE COUNTY PARK - AREA 316	9905 SW 120TH ST	33176
KILLIAN LIBRARY PARK	1161 SW 87TH CT	33176
BRIAR BAY PARK	9000 SW 128TH ST	33176
SOUTH DADE TRAIL MINI PARK	7975 SW 112TH ST	33156

## Religious Centers

Facility Name	Address	Zip Code
KILLIAN PINES UNITED METHODIST	10755 SW 112TH STREET	33176
ADVENT CHRISTIAN OAK GROVE CHURCH	11211 SW 102ND AVENUE	33176
ST ANDREW GREEK ORTHODOX CHURCH	7901 N KENDALL DRIVE	33156
MIAMI BAPTIST ASSOCIATION	7855 SW 104TH STREET # 210	33156
CHRIST TRUE & FAITHFUL MINISTRIES	10680 SW 113TH PLACE	33176
THE CHURCH OF JESUS CHRIST OF LATTER DAY SAINTS - MIAMI 4TH WARD	10000 SOUTHWEST 107TH AVENUE	33176
TEMPLE BETH OR	11715 SOUTHWEST 87TH AVENUE	33176
RIVERSIDE BAPTIST CHURCH	10775 SOUTHWEST 104TH STREET	33176
GRACE CHURCH OF KENDALL	8100 SW 104 ST	33156
JEHOVAH'S WITNESSES	9501 SW 117TH AVENUE	33186
CONCORDIA LUTHERAN CHURCH	8701 SOUTHWEST 124TH STREET	33176
ST CATHERINE OF SIENA CHURCH	9200 SOUTHWEST 107TH AVENUE	33176
KENDALL CHURCH OF GOD	8795 SW 112TH STREET	33176
BET BREIRA CONGREGATION	9400 SW 87TH AVENUE	33176
FLORIDA BAPTIST CHILDRENS HOMES	7750 SOUTHWEST 95TH TERRACE	33156
SAINT JOHN NEUMANN CATHOLIC CHURCH	12125 SOUTHWEST 107TH AVENUE	33176
ST JOHN MISSIONARY BAPTIST CHURCH	8819 SW 126TH TERRACE	33176
WAYSIDE BAPTIST CHURCH	7701 SOUTHWEST 98TH STREET	33156
CHABAD OF KENDALL	8700 SOUTHWEST 112TH STREET	33176
THIRD CHURCH OF CHRIST SCIENTIST	11001 SOUTHWEST 87TH AVENUE	33176
KENDALL PRESBYTERIAN CHURCH	8485 SW 112TH STREET	33156

## Public Schools

Facility Name	Address	Zip Code
BRUCIE BALL EDUCATIONAL CENTER	11001 SW 76TH ST	33134
INSTRUCTIONAL CENTER SYSTEM WIDE	11001 SW 76TH ST RM 82	33173
SOMERSET ACADEMY KENDALL	9790 SW 107 CT	33176
KENDALE ELEMENTARY SCHOOL	10693 SW 93RD ST	33176
LEEWOOD K-8 CENTER	10343 SW 124TH ST	33176
WILLIAM H. LEHMAN ELEMENTARY SCHOOL	10990 SW 113TH PL	33176
RUTH OWENS KRUSE EDUCATION CENTER	11001 SW 76TH ST	33173
UNIVERSITY OF MIAMI HEALTH	8932 SW 97TH AVE	33176
MIAMI KILLIAN SENIOR HIGH SCHOOL	10655 SW 97TH AVE	33176
VINELAND K-8 CENTER	8455 SW 119TH ST	33156
EVERGLADES UNIVERSITY - MIAMI	11731 MILLS DRIVE	33183
GLORIA FLOYD ELEMENTARY SCHOOL	12650 SW 109TH AVE	33176

Facility Name	Address	Zip Code
BRIDGEPREP ACADEMY OF MIAMI DADE	9095 SW 87 AVE	33176
MIAMI DADE COLLEGE - KENDALL CAMPUS	11011 SW 104TH ST	33176
ACCUPUNCTURE MASSAGE COLLEGE	10506 N KENDALL DRIVE	33176
SUNSET PARK ELEMENTARY SCHOOL	10235 SW 84TH ST	33173
TERRA ENVIRONMENTAL RESEARCH INSTITUTE	11005 SW 84TH ST	33173
MIAMI YOUTH ACADEMY	10855 SW 84 ST	33173
TRUE NORTH CLASSICAL ACADEMY SOUTH	7900 SW 86 STREET	33143
SCHOOL FOR ADVANCED STUDIES - SOUTH	11011 SW 104TH ST # T-301	33176
BEN GAMLA CHARTER SCHOOL	11155 SW 112TH AVE	33176
SOMERSET PREPARATORY ACADEMY SUNSET	11155 SW 112TH AVE	33176
SOMERSET ACADEMY BAY MIDDLE SCHOOL	9500 SW 97TH AVE	33176
SOMERSET ACADEMY BAY	9500 SW 97TH AVE	33176
KENWOOD K-8 CENTER	9300 SW 79TH AVE	33156
CITY COLLEGE-MIAMI	9300 S DADELAND BLVD	33156

## Group Care Facilities

Facility Name	Address	Zip Code
MIAMI CEREBRAL PALSY 80 ST	11750 SW 80 STREET	33183
SOMERSET ACADEMY PREP SCHOOL	11155 SW 112 AVENUE	33176
GRANNY'S GARDEN HOME	11173 SW 112 TERRACE	33176
ATLANTIS ACADEMY K-12	9600 SW 107 AVENUE	33176
ST. JOHN NEUMANN CATHOLIC SCH. K TO 8	12115 SW 107 AVENUE	33176
CENTER STAGE MIAMI	10511 SW 88 STREET, SUITE C-104	33176
MIAMI KILLIAN SENIOR HIGH ANNEX	10655 SW 97 AVENUE	33176
VINELAND K-8 CENTER	8455 SW 119 STREET	33156
BRUCIE BALL EDUCATIONAL CENTER	11001 SW 76 STREET	33173
ATLANTIS ACADEMY	10855 SW 72 STREET, UNIT 49	33173
GRANDAD ELDERLY A.L.F.	7520 SW 108 AVENUE	33173
SUNSET PARK ELEM.	10235 SW 84 STREET	33173
KENDALL ALF #1	9700 SW 106 COURT	33176
LEEWOOD K-8 CENTER	10343 SW 124 STREET	33176
COMMUNITY HABILITATION CENTER	11450 SW 79 STREET	33173
PALACE ALF, THE	11355 SW 84 STREET	33173
TWO SISTERS ETERNITY CARE, LLC	8610 SW 97 ROAD	33173
MIAMI KILLIAN SENIOR H.	10655 SW 97 AVENUE	33176
ON THE HORIZON L.C.	12071-75 SW 117 AVENUE	33186
ROSE'S RETIREMENT HOME	11520 SW 108 AVENUE	33176
ADVANTAGE ACADEMY SANTA FE	9790 SW 107 COURT	33176
OUR LADY OF THE ROSARY SCHOOL	10701 SW 95 STREET	33176
OUR PRIDE ACADEMY, INC.	10100 SW 107 AVENUE	33176
TINY STEPS PRESCHOOL	10471-91 SW 88 STREET, UNIT F103	33176
SOMERSET BAY CHARTER SCHOOL	9500 SW 97 AVENUE	33176
VILLAGE PINES SCHOOL ELEM.	15000 SW 92 AVENUE	33176

Facility Name	Address	Zip Code
CHILDREN'S RESOURCE FUND- SCHOOL	8571 SW 112 STREET	33156
A.C.E. ACADEMY- CENTRAL	11025 SW 84TH STREET, BUILDING 10	33173
TERRA ENVIRONMENTAL RESEARCH INSTITUTE	11005 SW 84 STREET	33173
MIAMI YOUTH ACADEMY	10855 SW 84 STREET	33173
MALCIEL BONILLA	9830 SW 80 DRIVE	33173
SMART STARTS AT DADELAND	7900 SW 86 STREET	33143
BE UNIQUE ACADEMY	11155 SW 112 AVENUE, SUITE 506,512	33176
SCHOOL FOR ADVANCED STUDIES - MDCC SOUTH CAMPUS	11011 SW 104 STREET	33176
KILLIAN MONTESSORI SCHOOL	8640 SW 112TH STREET	33156
MACARENA ALF	8000 SW 88 STREET	33156
KENWOOD K-8 CENTER	9300 SW 79 AVENUE	33156
CATTOIRA MONTESSORI SCHOOL	9385 SW 79 AVENUE	33156
KENDALE ELEM.	10693 SW 93 STREET	33176
KILLIAN OAKS ACADEMY	10545 SW 97 AVENUE	33176
OLIVER-PYATT CENTERS, LLC	11382 SW 95TH COURT	33176
SOL ACADEMY INC.	8795 SW 112 STREET	33176
RUTH OWEN KRUSE ED.CTR.	11001 SW 76 STREET	33173
CARPE DIEM ACADEMY	11025 SW 84 STREET, UNIT 8	33173
WILLIAM LEHMAN ELEMENTARY	10990 SW 113 PLACE	33176
S.T.A.R.S. AUTISM SCHOOL- MAIN	10870 SW 113 PLACE, FLOOR 2	33176
BEN GAMLA KENDALL	11155 SW 112	33176
GLORIA FLOYD ELEM.	12650 SW 109 AVENUE	33176
GALLOWAY ADULT CARE	10740 SW 87TH AVENUE	33176
CONCORDIA LUTHERAN SCHOOL	8701 SW 124 STREET	33176
KENDALL CHRISTIAN SCHOOL	8485 SW 112 STREET	33156
T.L.C. 3	8395 SW 112 STREET	33156
BELLA LUNA RETIREMENT HOME II	11511 SW 128 STREET	33176
TWO SISTERS HOME CARE INC.	11470 SW 80 TERRACE	33173
BRIDGEPREP ACADEMY SOUTH CAMPUS (SATELLITE)	9200 SW 107 AVENUE	33183
KENDALL ALF II	10230 SW 91ST STREET	33176
VICTORIA'S PLAYHOUSE DAY CARE & PRE- K	10095 SW 88 STREET	33176
KIDDIE KAMPUS LEARNING CENTER	10570 SW 97 AVENUE	33176
RIVIERA PREPARATORY SCHOOL	9775 SW 87 AVENUE	33176
ROIG ACADEMY, THE	8000 SW 112 STREET	33156
ACE ACADEMY	11025 SW 84 STREET, BUILDING 6	33173
KAYLEEN'S LEARNING CENTER	10855 SW 72 STREET	33173
MCGLANNAN SCHOOL ELEMENTARY	10770 SW 84 STREET	33173
BALBINA HOME CARE, INC	10115 SW 77 DRIVE	33173
ELPA HOME CARE	9950 SW 83 STREET	33173

## Block Groups

The following Census Block Groups were used to calculate demographics for this report.

### 1990 Census Block Groups

120250084083, 120250078039, 120250086005, 120250084089, 120250084059, 120250084072, 120250077033, 120250081005, 120250081007, 120250078025, 120250084062, 120250084049, 120250084084, 120250084051, 120250083011, 120250101282, 120250087008, 120250084069, 120250083014, 120250084071, 120250101283, 120250084091, 120250077032, 120250084043, 120250101245, 120250101114, 120250084092, 120250078031, 120250081006, 120250086004, 120250084082, 120250084052, 120250078032

### 2000 Census Block Groups

120860084114, 120860084131, 120860084112, 120860084111, 120860084072, 120860084092, 120860084102, 120860084053, 120860077033, 120860082011, 120860077032, 120860081007, 120860086023, 120860084121, 120860084113, 120860084151, 120860084152, 120860084071, 120860078024, 120860101761, 120860101243, 120860101244, 120860084141, 120860084153, 120860084132, 120860083061, 120860078031, 120860078025, 120860084103, 120860083041, 120860078032, 120860101772, 120860084101, 120860084144, 120860084154, 120860083051, 120860084051, 120860084091, 120860078033, 120860101245, 120860101114, 120860084142, 120860084143, 120860084052, 120860083052

### 2010 Census Block Groups

120860084101, 120860156001, 120860084193, 120860084192, 120860084057, 120860084074, 120860084055, 120860078041, 120860157002, 120860084104, 120860086023, 120860084152, 120860083052, 120860084052, 120860077042, 120860084123, 120860084171, 120860084162, 120860083051, 120860191001, 120860084124, 120860084142, 120860084173, 120860084144, 120860084191, 120860084163, 120860084151, 120860084153, 120860084072, 120860083053, 120860083055, 120860078052, 120860078051, 120860078043, 120860077051, 120860076044, 120860084141, 120860084172, 120860084181, 120860084121, 120860084161, 120860083054, 120860084051, 120860078054, 120860078053, 120860078042, 120860078044, 120860078071, 120860078072, 120860078073, 120860084103, 120860156002, 120860084054, 120860084056, 120860084071, 120860084154, 120860083061, 120860084053, 120860077043, 120860084102, 120860084175, 120860084143, 120860084092, 120860084073, 120860084091, 120860084094, 120860077052, 120860082062, 120860191004, 120860192002, 120860157001, 120860084105, 120860084174, 120860084122, 120860084093, 120860078045, 120860081021

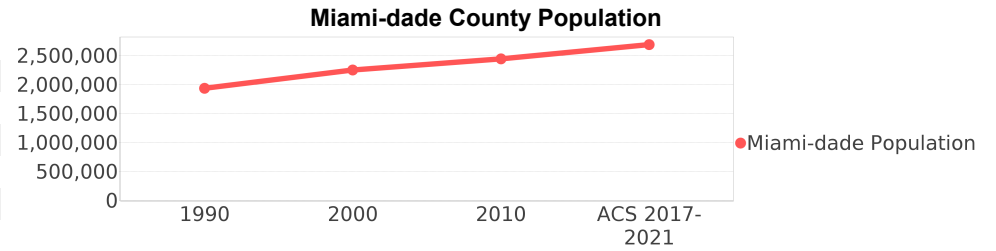
### Census Block Groups

120860084303, 120860082061, 120860078092, 120860191001, 120860084211, 120860084241, 120860084251, 120860084292, 120860084233, 120860077052, 120860191004, 120860084213, 120860084311, 120860156001, 120860086033, 120860084272, 120860084242, 120860084181, 120860084312, 120860084302, 120860084243, 120860084193, 120860084283, 120860084282, 120860084221, 120860084291, 120860084293, 120860084294, 120860083053, 120860082063, 120860082021, 120860084094, 120860078082, 120860077043, 120860084201, 120860084202, 120860084301, 120860084262, 120860084153, 120860083102, 120860084222, 120860078052, 120860078091, 120860078073, 120860084191, 120860084163, 120860084151, 120860084281, 120860084162, 120860084154, 120860083131, 120860084093, 120860078053, 120860077053, 120860076091, 120860157001, 120860157002, 120860084271, 120860084182, 120860084261, 120860084161, 120860084152, 120860083054, 120860078093, 120860082062, 120860081022, 120860078071, 120860192002, 120860084304, 120860156002, 120860083051, 120860084092, 120860084091, 120860078054, 120860077051, 120860078051, 120860078083, 120860081024, 120860081021, 120860077042, 120860076092, 120860084212, 120860084263, 120860084192, 120860083052, 120860084232, 120860078081, 120860078072

# Miami-dade County Demographic Profile

## General Population Trends - Miami-dade <sup>5</sup>

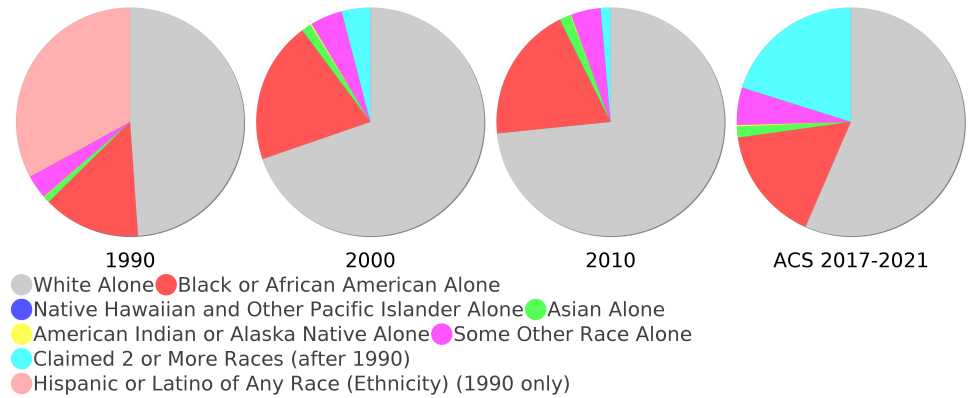
Description	1990	2000	2010 <sup>1</sup>	ACS 2017-2021
Total Population	1,937,094	2,253,362	2,445,374	2,690,113
Total Households	692,355	776,774	827,556	936,351
Average Persons per Acre	1.528	1.774	1.925	2.12
Average Persons per Household	2.798	2.84	3.00	2.83
Average Persons per Family	3.413	3.488	3.591	3.54
Males	928,411	1,086,558	1,182,784	1,316,112



## Race and Ethnicity Trends - Miami-dade <sup>5, 8, 9</sup>

Description	1990	2000	2010 <sup>1</sup>	ACS 2017-2021
White Alone	1,413,015 (72.95%)	1,570,990 (69.72%)	1,794,730 (73.39%)	1,520,002 (56.50%)
Black or African American Alone	397,993 (20.55%)	452,333 (20.07%)	470,326 (19.23%)	438,019 (16.28%)
Native Hawaiian and Other Pacific Islander Alone	(NA)	605 (0.03%)	649 (0.03%)	531 (0.02%)
Asian Alone	25,869 (1.34%)	30,692 (1.36%)	38,813 (1.59%)	41,628 (1.55%)
American Indian or Alaska Native Alone	3,066 (0.16%)	4,841 (0.21%)	3,572 (0.15%)	6,065 (0.23%)
Some Other Race Alone	96,713 (4.99%)	102,436 (4.55%)	102,938 (4.21%)	142,274 (5.29%)
Claimed 2 or More Races	(NA)	91,465 (4.06%)	34,346 (1.40%)	541,594 (20.13%)
Hispanic or Latino of Any Race (Ethnicity)	953,407 (49.22%)	1,291,681 (57.32%)	1,565,410 (64.02%)	1,842,914 (68.51%)
Not Hispanic or Latino (Ethnicity)	983,687 (50.78%)	961,681 (42.68%)	879,964 (35.98%)	847,199 (31.49%)
Minority (Race and Ethnicity)	1,351,487 (69.77%)	1,787,468 (79.32%)	2,112,884 (86.40%)	2,333,441 (86.74%)

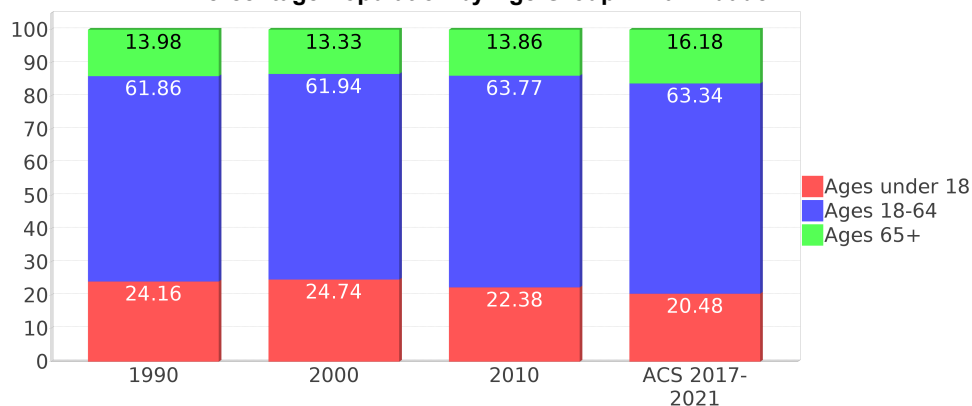
Miami-dade County Race



## Age Trends - Miami-dade <sup>5</sup>

Description	1990	2000	2010 <sup>1</sup>	ACS 2017-2021
Under Age 5	7.21%	6.43%	6.20%	5.69%
Ages 5-17	16.95%	18.31%	16.18%	14.79%
Ages 18-21	5.60%	5.24%	5.83%	4.69%
Ages 22-29	13.10%	10.97%	10.98%	10.34%
Ages 30-39	16.06%	16.33%	14.14%	13.90%
Ages 40-49	12.47%	14.49%	15.67%	14.28%
Ages 50-64	14.63%	14.90%	17.15%	20.13%
Age 65 and Over	13.98%	13.33%	13.86%	16.18%
-Ages 65-74	7.54%	7.23%	7.34%	8.84%
-Ages 75-84	4.88%	4.41%	4.71%	5.01%
-Age 85 and Over	1.55%	1.69%	1.81%	2.32%
Median Age	NA	36	38	40.4

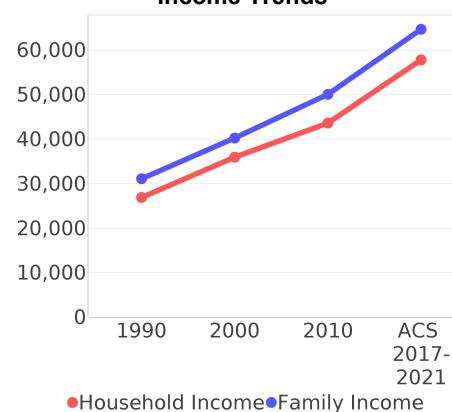
Percentage Population by Age Group - Miami-dade



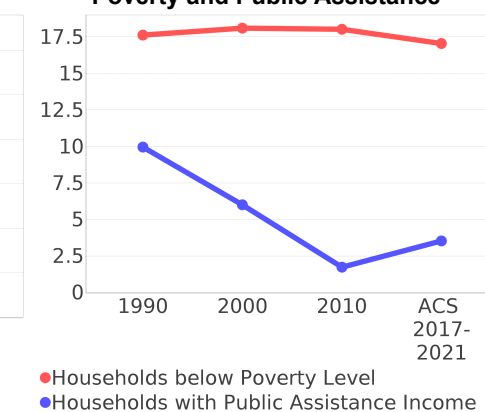
## Income Trends - Miami-dade <sup>5</sup>

Description	1990	2000	2010 <sup>1</sup>	ACS 2017-2021
Median Household Income	\$26,909	\$35,966	\$43,605	\$57,815
Median Family Income	\$31,113	\$40,260	\$50,065	\$64,690
Population below Poverty Level	17.94%	17.97%	17.18%	15.68%
Households below Poverty Level	17.62%	18.10%	18.02%	17.05%
Households with Public Assistance Income	9.96%	6.01%	1.74%	3.53%

Income Trends



Poverty and Public Assistance



## Disability Trends - Miami-dade <sup>10</sup>

See the Data Sources section below for an explanation about the differences in disability data among the various years.

Description	1990	2000	2010 <sup>1</sup>	ACS 2017-2021
Population 16 To 64 Years with a disability	78,949 (5.28%)	324,062 (15.60%)	NA (NA)	NA (NA)
Population 20 To 64 Years with a disability	NA (NA)	NA (NA)	NA (NA)	108,936 (6.71%)

## Educational Attainment Trends - Miami-dade <sup>11, 5</sup>

Age 25 and Over

Description	1990	2000	2010 <sup>1</sup>	ACS 2017-2021
Less than 9th Grade	228,426 (17.83%)	219,066 (14.68%)	202,413 (12.23%)	166,277 (8.67%)
9th to 12th Grade, No Diploma	219,856 (17.16%)	260,287 (17.45%)	178,335 (10.77%)	169,424 (8.84%)
High School Graduate or Higher	833,013 (65.01%)	1,012,436 (67.87%)	1,274,809 (77.00%)	1,581,464 (82.49%)
Bachelor's Degree or Higher	240,460 (18.77%)	323,399 (21.68%)	434,574 (26.25%)	608,670 (31.75%)

## Language Trends - Miami-dade <sup>5</sup>

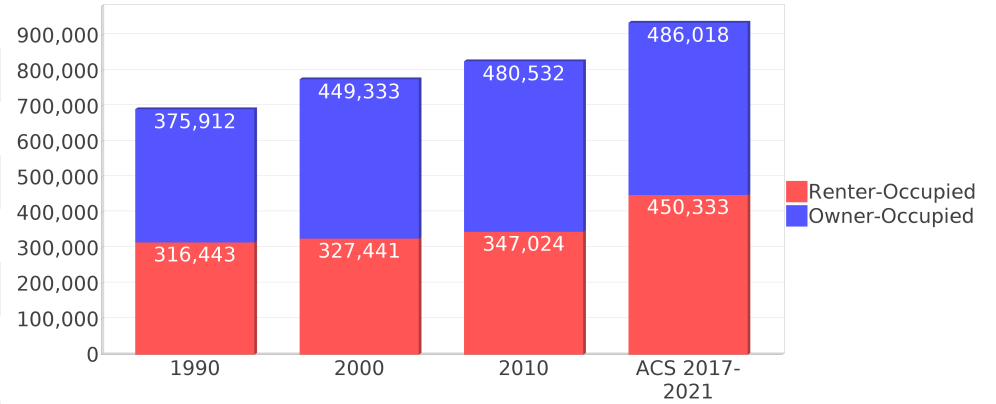
Age 5 and Over

Description	1990	2000	2010 <sup>1</sup>	ACS 2017-2021
Speaks English Well	221,943 (12.34%)	285,783 (13.55%)	302,397 (13.18%)	341,625 (13.47%)
Speaks English Not Well	NA (NA)	261,782 (12.42%)	294,777 (12.85%)	320,339 (12.63%)
Speaks English Not at All	NA (NA)	184,249 (8.74%)	217,650 (9.49%)	200,485 (7.90%)
Speaks English Not Well or Not at All	341,005 (18.96%)	446,031 (21.15%)	512,427 (22.34%)	520,824 (20.53%)
Speaks English Less than Very Well	NA (NA)	731,814 (34.71%)	814,824 (35.52%)	862,449 (33.99%)

## Housing Trends - Miami-dade <sup>5</sup>

Description	1990	2000	2010 <sup>1</sup>	ACS 2017-2021
Total	771,288	852,278	980,580	1,064,991
Units per Acre	0.608	0.671	0.772	0.84
Single-Family Units	365,600	448,569	508,364	527,957
Multi-Family Units	301,870	387,550	457,465	522,689
Mobile Home Units	15,359	15,338	14,234	13,865
Owner-Occupied Units	375,912	449,333	480,532	486,018
Renter-Occupied Units	316,443	327,441	347,024	450,333
Vacant Units	78,933	75,504	153,024	128,640
Median Housing Value	\$86,000	\$113,200	\$269,600	\$332,800
Occupied Housing Units w/No Vehicle	110,809 (16.00%)	111,323 (14.33%)	91,558 (11.06%)	90,753 (9.69%)
Median year householder moved into unit - Total	NA	NA	NA	2013
Median year householder moved into unit - Owner Occupied	NA	NA	NA	2006
Median year householder moved into unit - Renter Occupied	NA	NA	NA	2016
Abroad 1 year ago	NA	NA	NA	38,698
Different house in United States 1 year ago	NA	NA	NA	277,854
Same house 1 year ago	NA	NA	NA	2,345,253
Geographical Mobility in the Past Year - Total	NA	NA	NA	2,345,253

## Housing Tenure - Miami-dade



# Data Sources

## ACS vs Census Data

(1) The 2010 Census data is represented by a combination of decennial and ACS (2006-2010) data. The General Population Trends, Race and Ethnicity Trends, Age Trends are entirely from decennial. The Income Trends, Language Trends are entirely from the ACS. The Housing Trends section is derived from both: Decennial (Total # Housing Units, Housing Units per Acre, Owner-Occupied Units, Renter-Occupied Units, Vacant Units); ACS (Single Family Units, Multi-family Units, Mobile Homes, Median Housing Value, Occupied Housing Units w/No Vehicle).

## Area

(2) The geographic area of the community based on a user-defined community boundary or area of interest (AOI) boundary.

## Jurisdiction

(3) Jurisdiction(s) includes local government boundaries that intersect the user-defined community or AOI boundary.

## Goals, Values and History

(4) Information under the headings Goals and Values and History is entered manually by the user before the Sociocultural Data Report (SDR) is generated. This information is usually not available for communities with boundaries that are based on Census-defined places (i.e., not user-specified).

## Demographic Data

(5) Demographic data reported under the headings General Population Trends, Race and Ethnicity Trends, Age Trends, Income Trends, Educational Attainment Trends, Language Trends, and Housing Trends is from the U.S. Decennial Census for 1990 and 2000 and the American Community Survey (ACS) 5-year estimates for 2006-2010 and ACS 2017-2021. The data was gathered at the block group level for user-defined communities, Census places, and AOIs, and at the county level for counties. Depending on the dataset, the data represents 100% counts (Census Summary File 1) or sample-based information (Census Summary File 3 or ACS). For more information about using demographic data, please see the training videos located here: <https://www.fdot.gov/environment/pubs/sce/sce1.shtm>.

## About the Census Data

(6) The block group analysis for ETDM project analysis areas, user-defined communities, Census places, and AOI boundaries do not always correspond precisely to block group boundaries. To estimate the actual population more accurately, the SDR analysis adjusts the geographic area and data of affected block groups using the following methodology:

Delete overlapping census blocks with extremely low populations (2 or fewer people)  
Remove the portion of the block group that lies outside of the analysis area  
Recalculate the demographics assuming an equal area distribution of the population

Note that there may be areas where there is no population.

(7) Use caution when comparing the 100% count data (Decennial Census) to the sample-based data (ACS). In any given year, about one in 40 U.S. households will receive the ACS questionnaire. Over any five-year period, about one in eight households will receive the questionnaire, as compared to about one in six that received the long form questionnaire for the Decennial Census 2000. (Source: [https://www.census.gov/content/dam/Census/programs-surveys/acs/news/10ACS\\_keyfacts.pdf](https://www.census.gov/content/dam/Census/programs-surveys/acs/news/10ACS_keyfacts.pdf)) The U.S. Census Bureau provides help with this process: <https://www.census.gov/programs-surveys/acs/guidance/comparing-acs-data.html>

(8) Race and ethnicity are separate questions on the Census questionnaire. Individuals can report multiple race and ethnicity answers; therefore, numbers in the Race and Ethnicity portion of this report may add up to be greater than the total population. In addition, use caution when interpreting changes in race and ethnicity over time. Starting with the 2000 Decennial Census, respondents could select one or more race categories. Also in 2000, the placement of the question about Hispanic origin changed, helping to increase responsiveness to the Hispanic-origin question. Because of these and other changes, the 1990 data on race and ethnicity are not directly comparable with data from later censuses. (Source: <https://www.census.gov/library/publications/2001/dec/c2kbr01-01.html>)

(9) The "Minority" calculations use both the race and ethnicity responses from Census and ACS data. In this report, "Minority" refers to individuals who list a race other than White and/or list their ethnicity as Hispanic/Latino. In other words, people who are multi-racial, any single race other than White, or Hispanic/Latino of any race are considered minorities. We use the following formula:  $MINORITY = TOTALPOP - WHITE\_NH$  where TOTALPOP is the Total Population and WHITE\_NH is the population with a race of White alone and an ethnicity of Not Hispanic or Latino. Translating this to the field names used in the census ACS source data, the formula looks like this:  $MINORITY = B01003\_E001 - B03002\_E003$ . (Note, the WHITE\_NH population is not reported separately in this report.)

(10) Disability data is not included in the 2010 Decennial Census or the 2006-2010 ACS. This data is available in the ACS 2017-2021 ACS. Because of changes made to the Census and ACS questions between 1990 and ACS, disability variables should not be compared from year to year. For example: 1) with the 1990 data, the disabilities are listed as a "work disability" while this distinction is not made with 2000 or ACS data; 2) the ACS data includes the institutionalized population (e.g. persons in prisons and group homes) while this population is not included in 1990 or 2000; and 3) the age groupings changed over the years.

(11) The category Bachelor's Degree or Higher under the heading Educational Attainment Trends is a subset of the category High School Graduate or Higher.

(12) Income of households. This includes the income of the householder and all other individuals 15 years old and over in the household, whether they are related to the householder or not. Because many households consist of only one person, average household income is usually less than average family income.

(13) Income of families. In compiling statistics on family income, the incomes of all members 15 years old and over related to the householder are summed and treated as a single amount.

(14) Age trends. The median age for 1990 is not available.

## Land Use Data

(15) The Land Use information Indicates acreages and percentages for the generalized land use types used to group parcel-specific, existing land use assigned by the county property appraiser office according to the Florida Department of Revenue land use codes.

## Community Facilities Data

- (16) Assisted Rental Housing Units - Identifies multifamily rental developments that receive funding assistance under federal, state, and local government programs to offer affordable housing as reported by the Shimberg Center for Housing Studies, University of Florida.
- (17) Mobile Home Parks - Identifies approved or acknowledged mobile home parks reported by the Florida Department of Business and Professional Regulation and Florida Department of Health.
- (18) Migrant Camps - Identifies migrant labor camp facilities inspected by the Florida Department of Health.
- (19) Group Care Facilities - Identifies group care facilities inspected by the Florida Department of Health.
- (20) Community Center and Fraternal Association Facilities - Identifies facilities reported by multiple sources.
- (21) Law Enforcement Correctional Facilities - Identifies facilities reported by multiple sources.
- (22) Cultural Centers - Identifies cultural centers including organizations, buildings, or complexes that promote culture and arts (e.g., aquariums and zoological facilities; arboreta and botanical gardens; dinner theaters; drive-ins; historical places and services; libraries; motion picture theaters; museums and art galleries; performing arts centers; performing arts theaters; planetariums; studios and art galleries; and theater producers stage facilities) reported by multiple sources.
- (23) Fire Department and Rescue Station Facilities - Identifies facilities reported by multiple sources.
- (24) Government Buildings - Identifies local, state, and federal government buildings reported by multiple sources.
- (25) Health Care Facilities - Identifies health care facilities including abortion clinics, dialysis clinics, medical doctors, nursing homes, osteopaths, state laboratories/clinics, and surgicenters/walk-in clinics reported by the Florida Department of Health.
- (26) Hospital Facilities - Identifies hospital facilities reported by multiple sources.
- (27) Law Enforcement Facilities - Identifies law enforcement facilities reported by multiple sources.
- (28) Parks and Recreational Facilities - Identifies parks and recreational facilities reported by multiple sources.
- (29) Religious Center Facilities - Identifies religious centers including churches, temples, synagogues, mosques, chapels, centers, and other types of religious facilities reported by multiple sources.
- (30) Private and Public Schools - Identifies private and public schools reported by multiple sources.
- (31) Social Service Centers - Identifies social service centers reported by multiple sources.
- (32) Veteran Organizations and Facilities

# County Data Sources

## ACS vs Census Data

(1) The 2010 Census data is represented by a combination of decennial and ACS (2006-2010) data. The General Population Trends, Race and Ethnicity Trends, Age Trends are entirely from decennial. The Income Trends, Language Trends are entirely from the ACS. The Housing Trends section is derived from both: Decennial (Total # Housing Units, Housing Units per Acre, Owner-Occupied Units, Renter-Occupied Units, Vacant Units); ACS (Single Family Units, Multi-family Units, Mobile Homes, Median Housing Value, Occupied Housing Units w/No Vehicle).

## About the Census Data

(34) Use caution when comparing the 100% count data (Decennial Census) to the sample-based data (ACS). In any given year, about one in 40 U.S. households will receive the ACS questionnaire. Over any five-year period, about one in eight households will receive the questionnaire, as compared to about one in six that received the long form questionnaire for the Decennial Census 2000. (Source: [https://www.census.gov/content/dam/Census/programs-surveys/acs/news/10ACS\\_keyfacts.pdf](https://www.census.gov/content/dam/Census/programs-surveys/acs/news/10ACS_keyfacts.pdf)) The U.S. Census Bureau provides help with this process: <https://www.census.gov/programs-surveys/acs/guidance/comparing-acs-data.html>

(35) Race and ethnicity are separate questions on the Census questionnaire. Individuals can report multiple race and ethnicity answers; therefore, numbers in the Race and Ethnicity portion of this report may add up to be greater than the total population. In addition, use caution when interpreting changes in race and ethnicity over time. Starting with the 2000 Decennial Census, respondents could select one or more race categories. Also in 2000, the placement of the question about Hispanic origin changed, helping to increase responsiveness to the Hispanic-origin question. Because of these and other changes, the 1990 data on race and ethnicity are not directly comparable with data from later censuses. (Source: <https://www.census.gov/library/publications/2001/dec/c2kbr01-01.html>)

(36) The "Minority" calculations use both the race and ethnicity responses from Census and ACS data. In this report, "Minority" refers to individuals who list a race other than White and/or list their ethnicity as Hispanic/Latino. In other words, people who are multi-racial, any single race other than White, or Hispanic/Latino of any race are considered minorities. We use the following formula:  $MINORITY = TOTALPOP - WHITE\_NH$  where TOTALPOP is the Total Population and WHITE\_NH is the population with a race of White alone and an ethnicity of Not Hispanic or Latino. Translating this to the field names used in the census ACS source data, the formula looks like this:  $MINORITY = B01003\_E001 - B03002\_E003$ . (Note, the WHITE\_NH population is not reported separately in this report.)

(37) Disability data is not included in the 2010 Decennial Census or the 2006-2010 ACS. This data is available in the ACS 2017-2021 ACS. Because of changes made to the Census and ACS questions between 1990 and ACS, disability variables should not be compared from year to year. For example: 1) with the 1990 data, the disabilities are listed as a "work disability" while this distinction is not made with 2000 or ACS data; 2) the ACS data includes the institutionalized population (e.g. persons in prisons and group homes) while this population is not included in 1990 or 2000; and 3) the age groupings changed over the years.

(38) The category Bachelor's Degree or Higher under the heading Educational Attainment Trends is a subset of the category High School Graduate or Higher.

## Metadata

- (39) Community and Fraternal Centers [https://etdmpub.florida-estat.org/meta/gc\\_communitycenter.xml](https://etdmpub.florida-estat.org/meta/gc_communitycenter.xml)
- (40) Correctional Facilities in Florida [https://etdmpub.florida-estat.org/meta/gc\\_correctional.xml](https://etdmpub.florida-estat.org/meta/gc_correctional.xml)
- (41) Cultural Centers in Florida [https://etdmpub.florida-estat.org/meta/gc\\_culturecenter.xml](https://etdmpub.florida-estat.org/meta/gc_culturecenter.xml)
- (42) Fire Department and Rescue Station Facilities in Florida [https://etdmpub.florida-estat.org/meta/gc\\_firestat.xml](https://etdmpub.florida-estat.org/meta/gc_firestat.xml)
- (43) Local, State, and Federal Government Buildings in Florida [https://etdmpub.florida-estat.org/meta/gc\\_govbuild.xml](https://etdmpub.florida-estat.org/meta/gc_govbuild.xml)
- (44) Florida Health Care Facilities [https://etdmpub.florida-estat.org/meta/gc\\_health.xml](https://etdmpub.florida-estat.org/meta/gc_health.xml)
- (45) Hospital Facilities in Florida [https://etdmpub.florida-estat.org/meta/gc\\_hospitals.xml](https://etdmpub.florida-estat.org/meta/gc_hospitals.xml)
- (46) Law Enforcement Facilities in Florida [https://etdmpub.florida-estat.org/meta/gc\\_lawenforce.xml](https://etdmpub.florida-estat.org/meta/gc_lawenforce.xml)
- (47) Florida Parks and Recreational Facilities [https://etdmpub.florida-estat.org/meta/gc\\_parks.xml](https://etdmpub.florida-estat.org/meta/gc_parks.xml)
- (48) Religious Centers [https://etdmpub.florida-estat.org/meta/gc\\_religion.xml](https://etdmpub.florida-estat.org/meta/gc_religion.xml)
- (49) Florida Public and Private Schools [https://etdmpub.florida-estat.org/meta/gc\\_schools.xml](https://etdmpub.florida-estat.org/meta/gc_schools.xml)
- (50) Social Service Centers [https://etdmpub.florida-estat.org/meta/gc\\_socialservice.xml](https://etdmpub.florida-estat.org/meta/gc_socialservice.xml)
- (51) Assisted Rental Housing Units in Florida [https://etdmpub.florida-estat.org/meta/gc\\_assisted\\_housing.xml](https://etdmpub.florida-estat.org/meta/gc_assisted_housing.xml)
- (52) Group Care Facilities <https://etdmpub.florida-estat.org/meta/groupcare.xml>
- (53) Mobile Home Parks in Florida [https://etdmpub.florida-estat.org/meta/gc\\_mobilehomes.xml](https://etdmpub.florida-estat.org/meta/gc_mobilehomes.xml)
- (54) Migrant Camps in Florida <https://etdmpub.florida-estat.org/meta/migrant.xml>
- (55) Veteran Organizations and Facilities [https://etdmpub.florida-estat.org/meta/gc\\_veterans.xml](https://etdmpub.florida-estat.org/meta/gc_veterans.xml)
- (56) Generalized Land Use [https://etdmpub.florida-estat.org/meta/lu\\_gen.xml](https://etdmpub.florida-estat.org/meta/lu_gen.xml)
- (57) Census Block Groups in Florida [https://etdmpub.florida-estat.org/meta/e2\\_cenacs\\_cci.xml](https://etdmpub.florida-estat.org/meta/e2_cenacs_cci.xml)
- (58) 1990 Census Block Groups in Florida [https://etdmpub.florida-estat.org/meta/e2\\_cenblkgrp\\_1990\\_cci.xml](https://etdmpub.florida-estat.org/meta/e2_cenblkgrp_1990_cci.xml)
- (59) 2000 Census Block Groups in Florida [https://etdmpub.florida-estat.org/meta/e2\\_cenblkgrp\\_2000\\_cci.xml](https://etdmpub.florida-estat.org/meta/e2_cenblkgrp_2000_cci.xml)
- (60) 2010 Census Block Groups in Florida [https://etdmpub.florida-estat.org/meta/e2\\_cenblkgrp\\_2010\\_cci.xml](https://etdmpub.florida-estat.org/meta/e2_cenblkgrp_2010_cci.xml)