

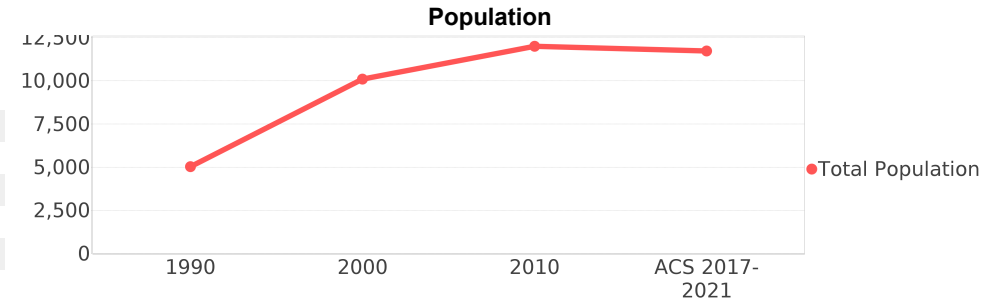
## Middleburg (CDP)

Area: 2 19.617 square miles  
 Jurisdiction - Cities: 3 NA  
 Jurisdiction - Counties: 3 Clay



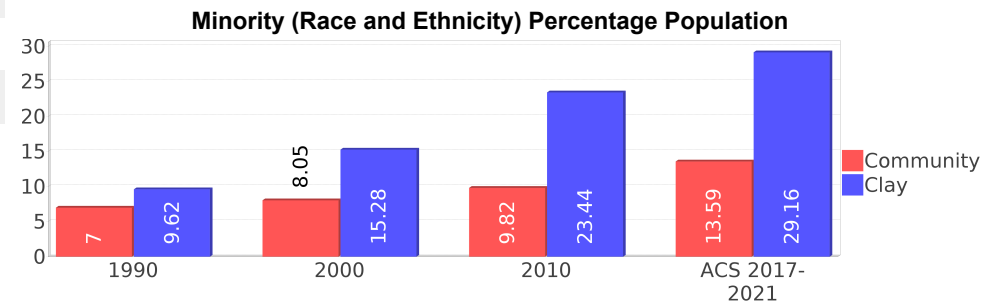
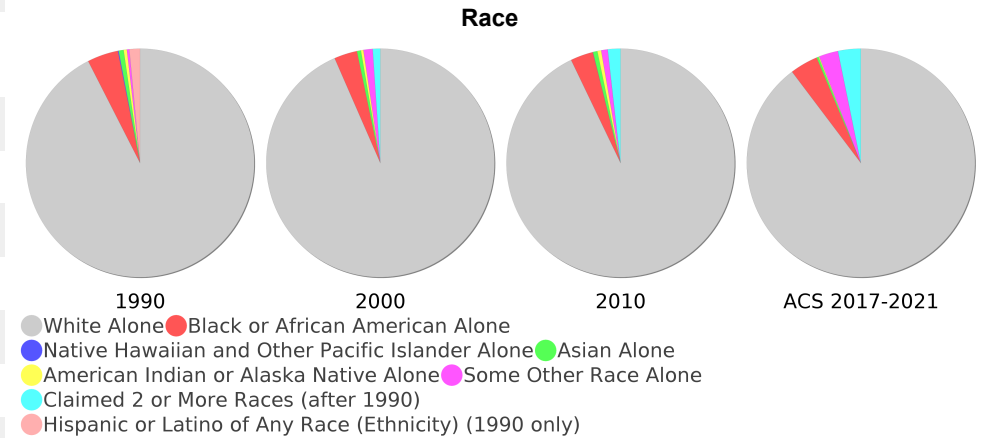
### General Population Trends

Description	1990	2000	2010 <sup>1</sup>	ACS 2017-2021
Total Population	5,031	10,100	11,999	11,725
Total Households	1,687	3,384	4,152	4,675
Average Persons per Acre	0.37	0.58	0.85	0.83
Average Persons per Household	3.00	2.94	3.00	2.78
Average Persons per Family	3.29	3.30	3.00	3.17
Males	2,548	5,217	6,043	6,521
Females	2,483	4,883	5,955	5,204



### Race and Ethnicity Trends <sup>5, 8, 9</sup>

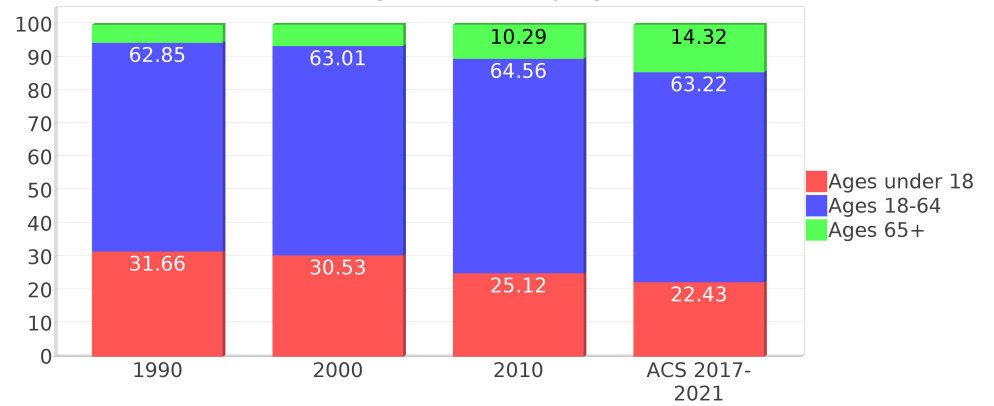
Description	1990	2000	2010 <sup>1</sup>	ACS 2017-2021
White Alone	4,722 (93.86%)	9,434 (93.41%)	11,138 (92.82%)	10,516 (89.69%)
Black or African American Alone	224 (4.45%)	330 (3.27%)	387 (3.23%)	465 (3.97%)
Native Hawaiian and Other Pacific Islander Alone	6 (0.12%)	0 (0.00%)	3 (0.03%)	0 (0.00%)
Asian Alone	36 (0.72%)	57 (0.56%)	74 (0.62%)	33 (0.28%)
American Indian or Alaska Native Alone	23 (0.46%)	37 (0.37%)	67 (0.56%)	14 (0.12%)
Some Other Race Alone	18 (0.36%)	130 (1.29%)	110 (0.92%)	318 (2.71%)
Claimed 2 or More Races	NA (NA)	109 (1.08%)	216 (1.80%)	378 (3.22%)
Hispanic or Latino of Any Race (Ethnicity)	77 (1.53%)	277 (2.74%)	483 (4.03%)	690 (5.88%)
Not Hispanic or Latino (Ethnicity)	4,954 (98.47%)	9,823 (97.26%)	11,516 (95.97%)	11,035 (94.12%)
Minority (Race and Ethnicity)	352 (7.00%)	813 (8.05%)	1,178 (9.82%)	1,593 (13.59%)



## Age Trends <sup>5</sup>

Description	1990	2000	2010 <sup>1</sup>	ACS 2017-2021
Under Age 5	9.28%	6.39%	6.23%	5.75%
Ages 5-17	22.38%	24.15%	18.89%	16.68%
Ages 18-21	4.85%	5.06%	5.69%	3.55%
Ages 22-29	14.55%	8.58%	9.29%	8.80%
Ages 30-39	19.30%	16.82%	11.68%	12.73%
Ages 40-49	13.70%	19.04%	17.06%	11.18%
Ages 50-64	10.46%	13.50%	20.84%	26.95%
Age 65 and Over	5.41%	6.43%	10.29%	14.32%
-Ages 65-74	3.84%	4.68%	6.71%	9.60%
-Ages 75-84	1.33%	1.63%	2.95%	3.52%
-Age 85 and Over	0.22%	0.10%	0.63%	1.19%
Median Age	NA	34	40	41

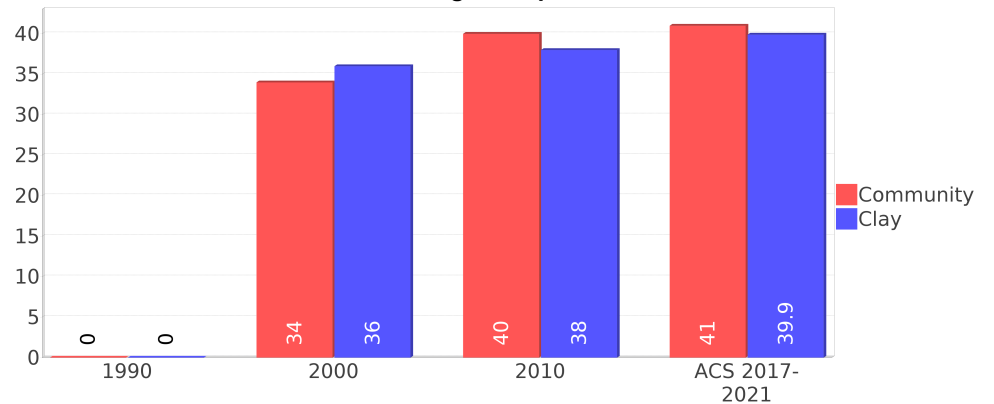
Percentage Population by Age Group



## Income Trends <sup>12, 13, 5</sup>

Description	1990	2000	2010 <sup>1</sup>	ACS 2017-2021
Median Household Income	\$31,087	\$45,093	\$57,926	\$60,221
Median Family Income	\$34,339	\$45,119	\$64,500	\$53,588
Population below Poverty Level	10.46%	10.67%	9.79%	8.42%
Households below Poverty Level	10.02%	8.81%	8.94%	7.83%
Households with Public Assistance Income	2.02%	2.16%	1.32%	0.96%

Median Age Comparison



## Disability Trends <sup>10</sup>

See the Data Sources section below for an explanation about the differences in disability data among the various years.

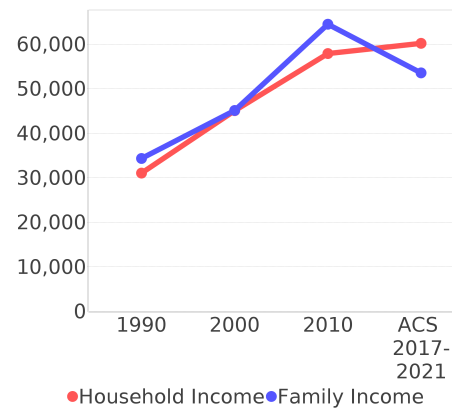
Description	1990	2000	2010 <sup>1</sup>	ACS 2017-2021
Population 16 To 64 Years with a disability	297 (8.91%)	1603 (17.17%)	(NA)	(NA)
Population 20 To 64 Years with a disability	(NA)	(NA)	(NA)	981 (13.60%)

## Educational Attainment Trends <sup>11, 5</sup>

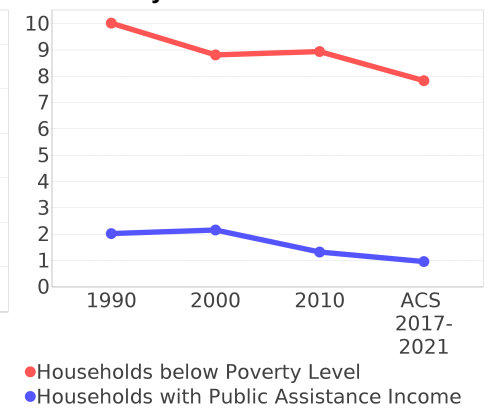
Age 25 and Over

Description	1990	2000	2010 <sup>1</sup>	ACS 2017-2021
Less than 9th Grade	216 (7.26%)	224 (3.62%)	275 (3.44%)	181 (2.19%)
9th to 12th Grade, No Diploma	556 (18.68%)	1,007 (16.27%)	1,153 (14.41%)	774 (9.38%)
High School Graduate or Higher	2,202 (73.99%)	4,958 (80.10%)	6,574 (82.15%)	7,298 (88.42%)
Bachelor's Degree or Higher	178 (5.98%)	512 (8.27%)	698 (8.72%)	1,469 (17.80%)

Income Trends



Poverty and Public Assistance



## Language Trends <sup>5</sup>

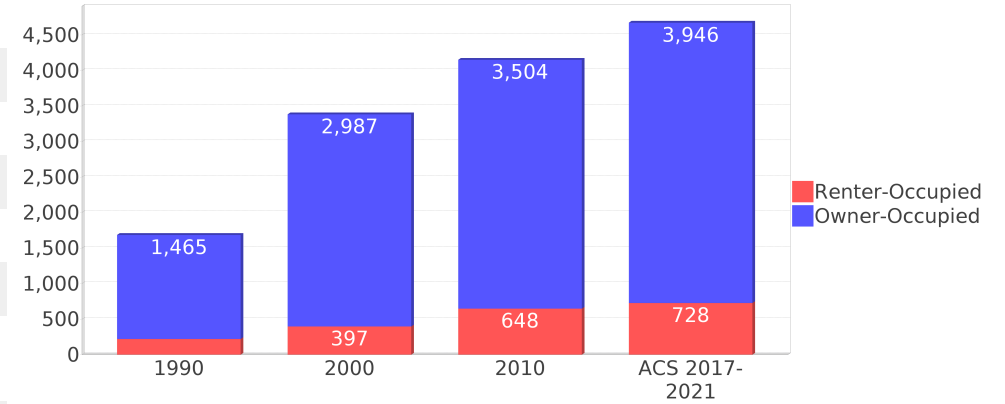
Age 5 and Over

Description	1990	2000	2010 <sup>1</sup>	ACS 2017-2021
Speaks English Well	23 (0.51%)	116 (1.23%)	87 (0.80%)	84 (0.76%)
Speaks English Not Well	NA (NA)	8 (0.08%)	39 (0.36%)	94 (0.85%)
Speaks English Not at All	NA (NA)	0 (0.00%)	5 (0.05%)	0 (0.00%)
Speaks English Not Well or Not at All	18 (0.40%)	8 (0.08%)	44 (0.40%)	94 (0.85%)
Speaks English Less than Very Well	NA (NA)	124 (1.31%)	131 (1.20%)	178 (1.61%)

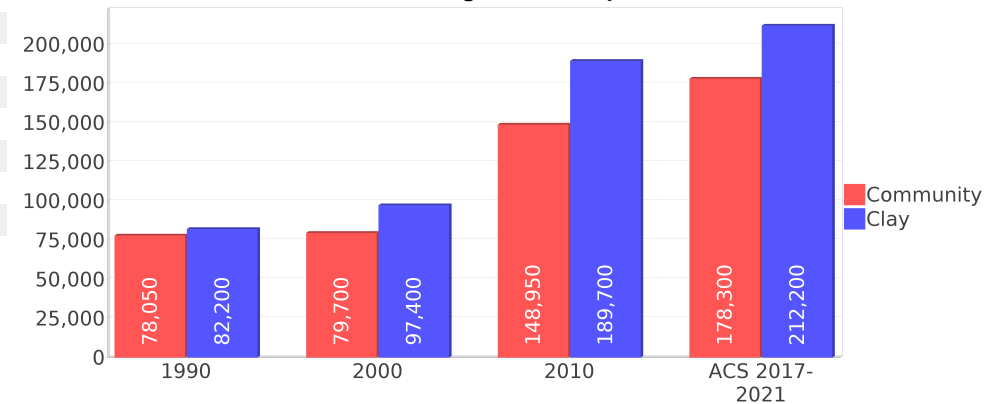
## Housing Trends <sup>5</sup>

Description	1990	2000	2010 <sup>1</sup>	ACS 2017-2021
Total	1,782	3,582	4,505	5,244
Units per Acre	0.15	0.29	0.37	0.42
Single-Family Units	766	1,835	2,312	3,130
Multi-Family Units	42	57	52	106
Mobile Home Units	874	1,688	1,917	2,008
Owner-Occupied Units	1,465	2,987	3,504	3,946
Renter-Occupied Units	221	397	648	728
Vacant Units	94	197	352	569
Median Housing Value	\$78,050	\$79,700	\$148,950	\$178,300
Occupied Housing Units w/No Vehicle	51 (3.02%)	103 (3.04%)	60 (1.44%)	102 (2.18%)

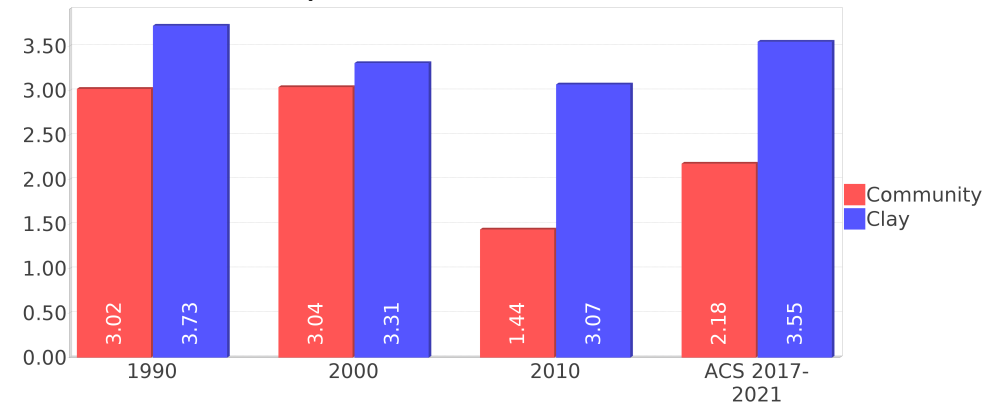
## Housing Tenure



## Median Housing Value Comparison



## Occupied Units With No Vehicles Available



## Geographic Mobility

Description	ACS 2017-2021
Median year householder moved into unit - Total	2008
Median year householder moved into unit - Owner Occupied	2006
Median year householder moved into unit - Renter Occupied	2012
Abroad 1 year ago	27
Different house in United States 1 year ago	1,504
Same house 1 year ago	10,034
Geographical Mobility in the Past Year - Total	11,565

## Computers and Internet

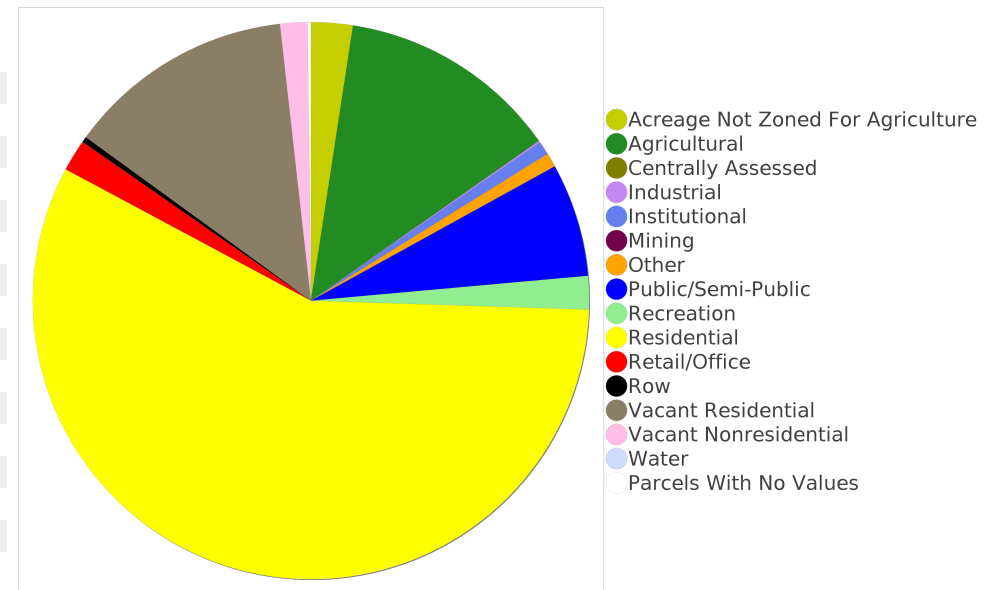
Description	ACS 2017-2021
Total Households Types of Computers in HH	4,675
Households with 1 or more device	4,459
Households with no computer	215
Total Households Presence and Types of Internet Subscriptions	4,675
Households with an internet subscription	4,321
Households with internet access without a subscription	69
Households with no internet access	284

## Household Languages

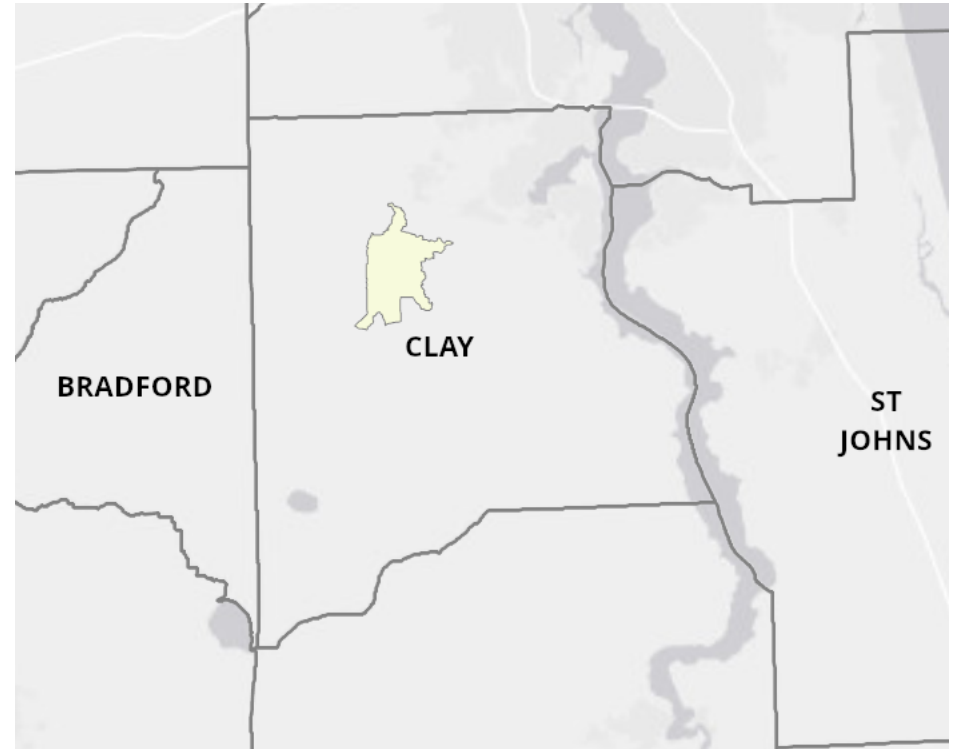
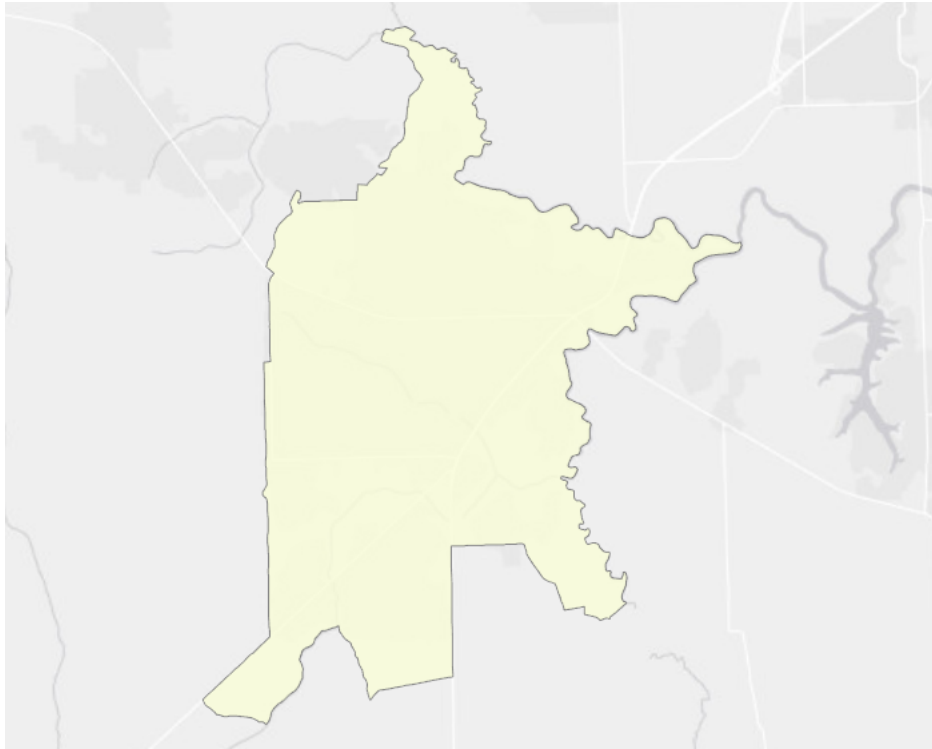
Description	ACS 2017-2021
Total Households by Household Language	4,675
Household Not Limited English Speaking Status	4,675
Spanish: Limited English speaking household	0
Indo-European languages: Limited English speaking household	0
Asian and Pacific Island languages: Limited English speaking household	0
Other languages: Limited English speaking household	0

## Existing Land Use <sup>15</sup>

Land Use Type	Acres	Percentage
Acreage Not Zoned For Agriculture	274	2.18%
Agricultural	1,458	11.61%
Centrally Assessed	0	0.00%
Industrial	11	0.09%
Institutional	90	0.72%
Mining	0	0.00%
Other	93	0.74%
Public/Semi-Public	747	5.95%
Recreation	219	1.74%
Residential	6,497	51.75%
Retail/Office	209	1.66%
Row	37	0.29%
Vacant Residential	1,500	11.95%
Vacant Nonresidential	179	1.43%
Water	0	0.00%
Parcels With No Values	23	0.18%



## Location Maps



## Community Facilities

The community facilities information below is useful in a variety of ways for environmental evaluations. These community resources should be evaluated for potential sociocultural effects, such as accessibility and relocation potential. The facility types may indicate the types of population groups present in the project study area. Facility staff and leaders can be sources of community information such as who uses the facility and how it is used. Additionally, community facilities are potential public meeting venues.

### Assisted Rental Housing Units

Facility Name	Address	Zip Code
MIDDLEBURG BLUFFS APARTMENTS	2425 IRIS ST.	32068

### Community and Fraternal Centers

Facility Name	Address	Zip Code
LIONS CLUB - MIDDLEBURG BLACK CREEK	2475 BLANDING BLVD	32068
MASONIC LODGE - MIDDLEBURG 107 F & AM	2108 PALMETTO ST	32068
MARINE CORPS LEAGUE DETACHMENT 1047	2269 ASTER AVE	32068
VVA CHAPTER 1059	2269 ASTER AVE	32068
VFW POST 8255 - MIDDLEBURG	2269 ASTER AVE	32068
WEIGEL SENIOR CENTER	3916 SECTION ST	32068

### Cultural Centers

Facility Name	Address	Zip Code
MIDDLEBURG HISTORICAL MUSEUM INC	3912 SECTION ST	32068
MIDDLEBURG CLAY- HILL BRANCH LIBRARY	2245 ASTER ST	32068

### Fire Department and Rescue Station Facilities

Facility Name	Address	Zip Code
MIDDLEBURG FIRE DEPARTMENT STATION 14	4003 EVERETTE AVE	32068

### Government Buildings

Facility Name	Address	Zip Code
U S POST OFFICE - MIDDLEBURG	2073 PALMETTO ST	32068

### Florida Parks and Recreational Facilities

Facility Name	Address	Zip Code
OMEGA PARK	4317 COUNTY ROAD 218	32068
HUNTER-DOUGLAS PARK	4227 LONGMIRE RD	32068
MASTER SGT JOHN E HAYES MEMORIAL PARK & MAIN STREET BOAT RAMP	3788 MAIN ST	32068

### Religious Centers

Facility Name	Address	Zip Code
JESUS CHURCH OF DELIVERANCE	2782 FORMAN CIR	32068
MIDDLEBURG UNITED METHODIST	3925 MAIN STREET	32068
FIRST ASSEMBLY OF GOD	3167 COUNTY ROAD 215	32068

Facility Name	Address	Zip Code
CINNAMON STREET BAPTIST CHURCH	20 CINNAMON STREET	32068
COMMUNITY HOLINESS CHURCH	2753 FORMAN CIR	32068
MIDDLEBURG CHURCH OF CHRIST	3155 COUNTY ROAD 215	32068
CHRISTIAN FAITH CENTER	4021 EVERETT AVENUE	32068
SOUTH MIDDLEBURG BAPTIST CHURCH	4565 ALLIGATOR BLVD	32068
ST MARK MISSIONARY BAPTIST CHURCH	2703 FORMAN CIRCLE	32068
MORNINGSTAR FAMILY CHURCH	3900 MAIN STREET	32068
MIDDLEBURG PRESBYTERIAN CHURCH	4564 ROSEMARY STREET	32068
INDEPENDENT CHURCH OF GOD	4366 LONGMIRE RD	32068
MIDDLEBURG CHURCH OF GOD	2728 HOWARD ROAD	32068
FIRST BAPTIST CHURCH	2645 BLANDING BLVD	32068
OAK GROVE BAPTIST CHURCH	COUNTY ROAD 215	32068
CHURCH OF JESUS CHRIST OF LATTER DAY SAINTS	4342 STATE ROAD 218	32068

## Public Schools

Facility Name	Address	Zip Code
MIDDLEBURG ELEMENTARY SCHOOL	3958 MAIN ST	32068

## Veteran Organizations and Facilities

Facility Name	Address	Zip Code
VVA CHAPTER 1059	2269 ASTER AVENUE	32068
MARINE CORPS LEAGUE DETACHMENT 1047	2269 ASTER AVENUE	32068
VFW POST 8255 - MIDDLEBURG	2269 ASTER AVENUE	32068

## Group Care Facilities

Facility Name	Address	Zip Code
MIDDLEBURG ASSISTED LIVING INC.	4192 CLOVE STREET	32068
BILLS PLACE	4860 CHICKPEA STREET	32068
MIDDLEBURG ELEMENTARY	3958 MAIN STREET	32068
LIGHTHOUSE CHRISTIAN SCHOOL	3925 MAIN STREET	32068

## Block Groups

The following Census Block Groups were used to calculate demographics for this report.

### 1990 Census Block Groups

120190301002, 120190312001, 120190301004, 120190301003, 120190302002, 120190302003, 120190312002, 120190311001

### 2000 Census Block Groups

120190312002, 120190301011, 120190301012, 120190301022, 120190312001, 120190302002, 120190301023, 120190311011, 120190302003

### 2010 Census Block Groups

120190301022, 120190301024, 120190301033, 120190311011, 120190302012, 120190312004, 120190312002, 120190301041, 120190301032, 120190301031, 120190301023, 120190302021

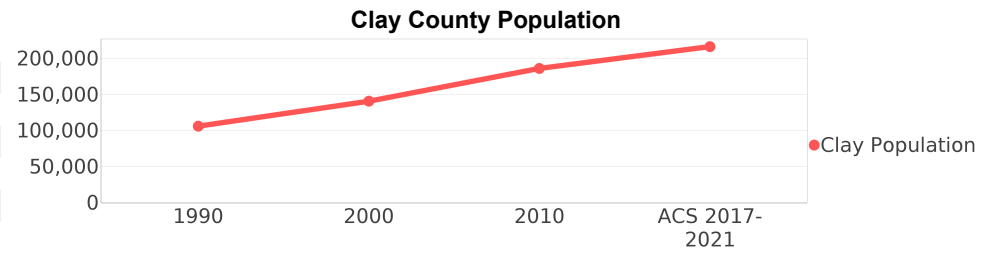
### Census Block Groups

120190302041, 120190302102, 120190301033, 120190301062, 120190312011, 120190311011, 120190301052, 120190301063, 120190301031, 120190312031, 120190301032, 120190301061, 120190301041, 120190311012

# Clay County Demographic Profile

## General Population Trends - Clay <sup>5</sup>

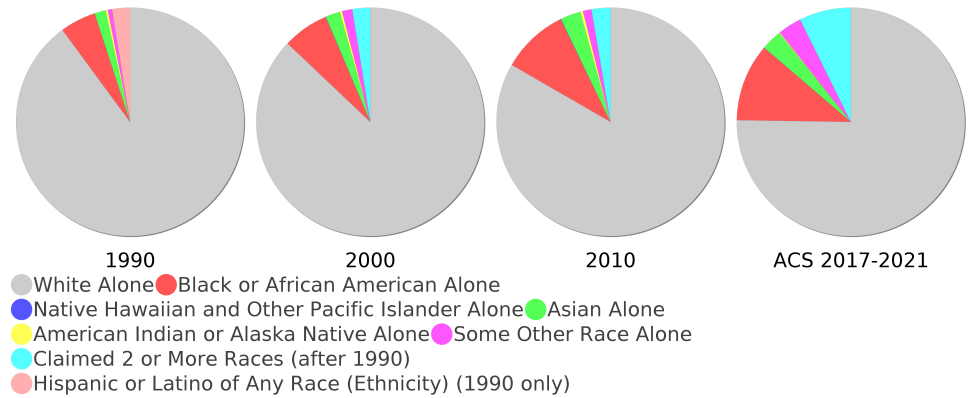
Description	1990	2000	2010 <sup>1</sup>	ACS 2017-2021
Total Population	105,986	140,814	186,076	216,308
Total Households	36,663	50,243	67,493	77,434
Average Persons per Acre	0.257	0.342	0.452	0.53
Average Persons per Household	2.891	2.764	3.00	2.78
Average Persons per Family	3.233	3.168	3.183	3.25
Males	52,272	69,134	91,200	106,993



## Race and Ethnicity Trends - Clay <sup>5, 8, 9</sup>

Description	1990	2000	2010 <sup>1</sup>	ACS 2017-2021
White Alone	97,691 (92.17%)	122,583 (87.05%)	155,042 (83.32%)	162,749 (75.24%)
Black or African American Alone	5,513 (5.20%)	9,165 (6.51%)	17,586 (9.45%)	23,819 (11.01%)
Native Hawaiian and Other Pacific Islander Alone	(NA)	89 (0.06%)	119 (0.06%)	46 (0.02%)
Asian Alone	1,702 (1.61%)	2,901 (2.06%)	5,348 (2.87%)	6,263 (2.90%)
American Indian or Alaska Native Alone	367 (0.35%)	470 (0.33%)	749 (0.40%)	320 (0.15%)
Some Other Race Alone	635 (0.60%)	2,028 (1.44%)	2,230 (1.20%)	7,259 (3.36%)
Claimed 2 or More Races	(NA)	3,578 (2.54%)	5,002 (2.69%)	15,852 (7.33%)
Hispanic or Latino of Any Race (Ethnicity)	2,764 (2.61%)	6,181 (4.39%)	13,395 (7.20%)	22,737 (10.51%)
Not Hispanic or Latino (Ethnicity)	103,222 (97.39%)	134,633 (95.61%)	172,681 (92.80%)	193,571 (89.49%)
Minority (Race and Ethnicity)	10,192 (9.62%)	21,518 (15.28%)	43,608 (23.44%)	63,067 (29.16%)

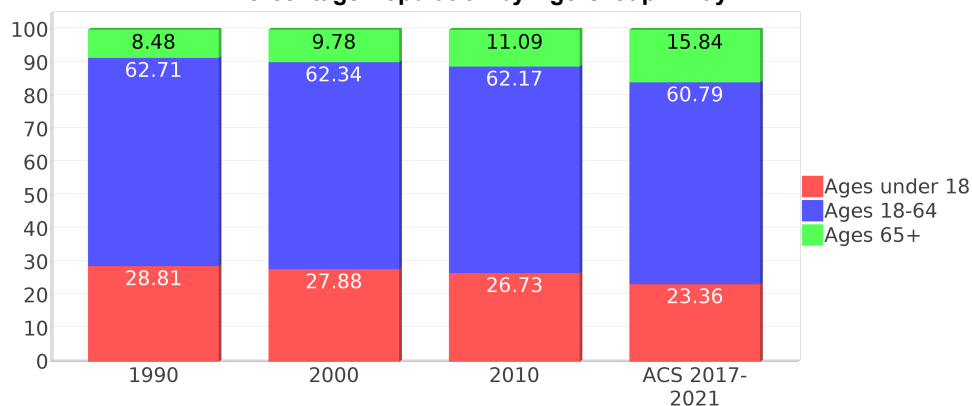
## Clay County Race



## Age Trends - Clay <sup>5</sup>

Description	1990	2000	2010 <sup>1</sup>	ACS 2017-2021
Under Age 5	7.57%	6.46%	6.32%	5.38%
Ages 5-17	21.24%	21.42%	20.41%	17.98%
Ages 18-21	5.60%	4.81%	5.01%	4.83%
Ages 22-29	12.16%	8.89%	9.02%	8.86%
Ages 30-39	17.37%	15.80%	13.42%	13.04%
Ages 40-49	15.17%	16.54%	15.90%	13.26%
Ages 50-64	12.42%	16.29%	18.82%	20.80%
Age 65 and Over	8.48%	9.78%	11.09%	15.84%
-Ages 65-74	5.19%	5.58%	6.62%	10.15%
-Ages 75-84	2.47%	3.33%	3.44%	4.26%
-Age 85 and Over	0.82%	0.87%	1.03%	1.43%
Median Age	NA	36	38	39.9

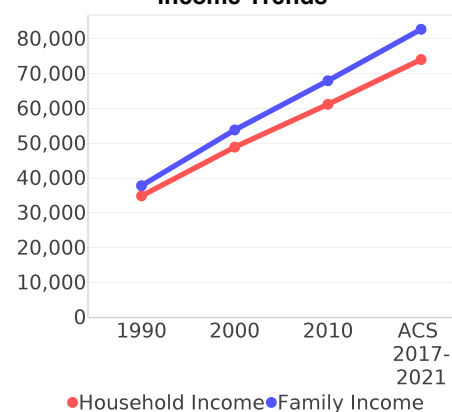
Percentage Population by Age Group - Clay



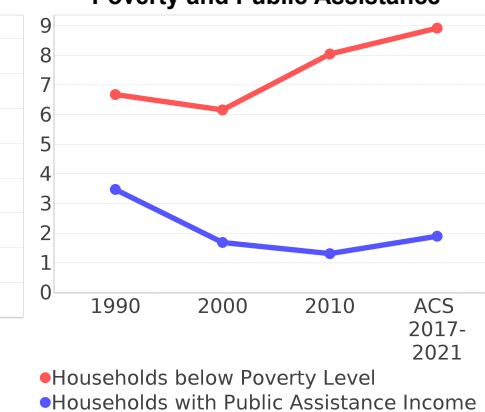
## Income Trends - Clay <sup>5</sup>

Description	1990	2000	2010 <sup>1</sup>	ACS 2017-2021
Median Household Income	\$34,860	\$48,854	\$61,185	\$74,059
Median Family Income	\$37,779	\$53,814	\$67,922	\$82,729
Population below Poverty Level	7.09%	6.78%	8.55%	9.58%
Households below Poverty Level	6.68%	6.16%	8.05%	8.92%
Households with Public Assistance Income	3.48%	1.69%	1.31%	1.90%

Income Trends



Poverty and Public Assistance



## Disability Trends - Clay <sup>10</sup>

See the Data Sources section below for an explanation about the differences in disability data among the various years.

Description	1990	2000	2010 <sup>1</sup>	ACS 2017-2021
Population 16 To 64 Years with a disability	5,492 (7.47%)	16,630 (12.97%)	NA (NA)	NA (NA)
Population 20 To 64 Years with a disability	NA (NA)	NA (NA)	NA (NA)	14,975 (11.90%)

## Educational Attainment Trends - Clay <sup>11, 5</sup>

Age 25 and Over

Description	1990	2000	2010 <sup>1</sup>	ACS 2017-2021
Less than 9th Grade	3,812 (5.83%)	2,900 (3.21%)	2,962 (2.46%)	3,272 (2.20%)
9th to 12th Grade, No Diploma	8,514 (13.02%)	9,397 (10.40%)	8,695 (7.22%)	8,771 (5.89%)
High School Graduate or Higher	53,064 (81.15%)	78,085 (86.39%)	108,834 (90.33%)	136,976 (91.92%)
Bachelor's Degree or Higher	11,716 (17.92%)	18,159 (20.09%)	28,701 (23.82%)	39,934 (26.80%)

## Language Trends - Clay <sup>5</sup>

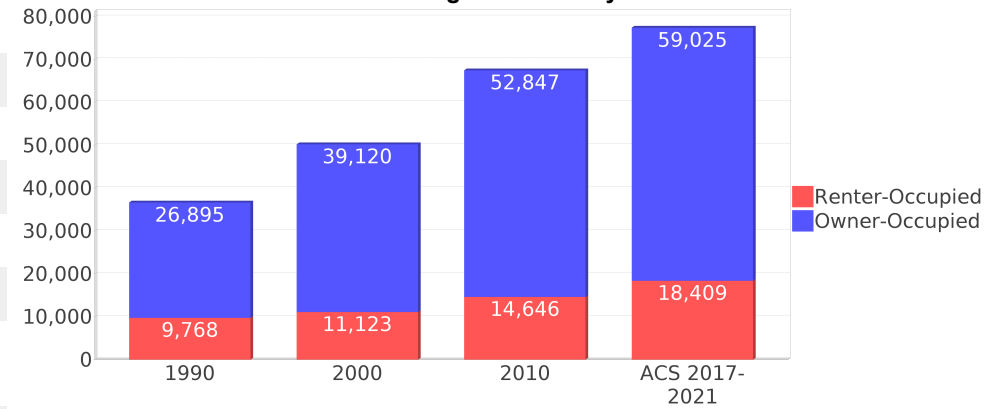
Age 5 and Over

Description	1990	2000	2010 <sup>1</sup>	ACS 2017-2021
Speaks English Well	1,025 (1.04%)	1,777 (1.35%)	2,993 (1.72%)	3,817 (1.86%)
Speaks English Not Well	NA (NA)	829 (0.63%)	1,827 (1.05%)	2,293 (1.12%)
Speaks English Not at All	NA (NA)	128 (0.10%)	421 (0.24%)	720 (0.35%)
Speaks English Not Well or Not at All	534 (0.54%)	957 (0.73%)	2,248 (1.29%)	3,013 (1.47%)
Speaks English Less than Very Well	NA (NA)	2,734 (2.08%)	5,241 (3.01%)	6,830 (3.34%)

## Housing Trends - Clay <sup>5</sup>

Description	1990	2000	2010 <sup>1</sup>	ACS 2017-2021
Total	40,249	53,748	73,799	84,159
Units per Acre	0.098	0.13	0.179	0.20
Single-Family Units	24,747	37,998	56,086	64,489
Multi-Family Units	5,264	6,394	7,837	8,798
Mobile Home Units	6,502	9,231	9,832	10,778
Owner-Occupied Units	26,895	39,120	52,847	59,025
Renter-Occupied Units	9,768	11,123	14,646	18,409
Vacant Units	3,586	3,505	6,306	6,725
Median Housing Value	\$82,200	\$97,400	\$189,700	\$212,200
Occupied Housing Units w/No Vehicle	1,369 (3.73%)	1,661 (3.31%)	2,073 (3.07%)	2,751 (3.55%)
Median year householder moved into unit - Total	NA	NA	NA	2011
Median year householder moved into unit - Owner Occupied	NA	NA	NA	2008
Median year householder moved into unit - Renter Occupied	NA	NA	NA	2017
Abroad 1 year ago	NA	NA	NA	1,076
Different house in United States 1 year ago	NA	NA	NA	30,662
Same house 1 year ago	NA	NA	NA	182,040
Geographical Mobility in the Past Year - Total	NA	NA	NA	182,040

## Housing Tenure - Clay



# Data Sources

## ACS vs Census Data

(1) The 2010 Census data is represented by a combination of decennial and ACS (2006-2010) data. The General Population Trends, Race and Ethnicity Trends, Age Trends are entirely from decennial. The Income Trends, Language Trends are entirely from the ACS. The Housing Trends section is derived from both: Decennial (Total # Housing Units, Housing Units per Acre, Owner-Occupied Units, Renter-Occupied Units, Vacant Units); ACS (Single Family Units, Multi-family Units, Mobile Homes, Median Housing Value, Occupied Housing Units w/No Vehicle).

## Area

(2) The geographic area of the community based on a user-defined community boundary or area of interest (AOI) boundary.

## Jurisdiction

(3) Jurisdiction(s) includes local government boundaries that intersect the user-defined community or AOI boundary.

## Goals, Values and History

(4) Information under the headings Goals and Values and History is entered manually by the user before the Sociocultural Data Report (SDR) is generated. This information is usually not available for communities with boundaries that are based on Census-defined places (i.e., not user-specified).

## Demographic Data

(5) Demographic data reported under the headings General Population Trends, Race and Ethnicity Trends, Age Trends, Income Trends, Educational Attainment Trends, Language Trends, and Housing Trends is from the U.S. Decennial Census for 1990 and 2000 and the American Community Survey (ACS) 5-year estimates for 2006-2010 and ACS 2017-2021. The data was gathered at the block group level for user-defined communities, Census places, and AOIs, and at the county level for counties. Depending on the dataset, the data represents 100% counts (Census Summary File 1) or sample-based information (Census Summary File 3 or ACS). For more information about using demographic data, please see the training videos located here: <https://www.fdot.gov/environment/pubs/sce/sce1.shtm>.

## About the Census Data

(6) The block group analysis for ETDM project analysis areas, user-defined communities, Census places, and AOI boundaries do not always correspond precisely to block group boundaries. To estimate the actual population more accurately, the SDR analysis adjusts the geographic area and data of affected block groups using the following methodology:

Delete overlapping census blocks with extremely low populations (2 or fewer people)  
Remove the portion of the block group that lies outside of the analysis area  
Recalculate the demographics assuming an equal area distribution of the population

Note that there may be areas where there is no population.

(7) Use caution when comparing the 100% count data (Decennial Census) to the sample-based data (ACS). In any given year, about one in 40 U.S. households will receive the ACS questionnaire. Over any five-year period, about one in eight households will receive the questionnaire, as compared to about one in six that received the long form questionnaire for the Decennial Census 2000. (Source: [https://www.census.gov/content/dam/Census/programs-surveys/acs/news/10ACS\\_keyfacts.pdf](https://www.census.gov/content/dam/Census/programs-surveys/acs/news/10ACS_keyfacts.pdf)) The U.S. Census Bureau provides help with this process: <https://www.census.gov/programs-surveys/acs/guidance/comparing-acs-data.html>

(8) Race and ethnicity are separate questions on the Census questionnaire. Individuals can report multiple race and ethnicity answers; therefore, numbers in the Race and Ethnicity portion of this report may add up to be greater than the total population. In addition, use caution when interpreting changes in race and ethnicity over time. Starting with the 2000 Decennial Census, respondents could select one or more race categories. Also in 2000, the placement of the question about Hispanic origin changed, helping to increase responsiveness to the Hispanic-origin question. Because of these and other changes, the 1990 data on race and ethnicity are not directly comparable with data from later censuses. (Source: <https://www.census.gov/library/publications/2001/dec/c2kbr01-01.html>)

(9) The "Minority" calculations use both the race and ethnicity responses from Census and ACS data. In this report, "Minority" refers to individuals who list a race other than White and/or list their ethnicity as Hispanic/Latino. In other words, people who are multi-racial, any single race other than White, or Hispanic/Latino of any race are considered minorities. We use the following formula:  $MINORITY = TOTALPOP - WHITE\_NH$  where TOTALPOP is the Total Population and WHITE\_NH is the population with a race of White alone and an ethnicity of Not Hispanic or Latino. Translating this to the field names used in the census ACS source data, the formula looks like this:  $MINORITY = B01003\_E001 - B03002\_E003$ . (Note, the WHITE\_NH population is not reported separately in this report.)

(10) Disability data is not included in the 2010 Decennial Census or the 2006-2010 ACS. This data is available in the ACS 2017-2021 ACS. Because of changes made to the Census and ACS questions between 1990 and ACS, disability variables should not be compared from year to year. For example: 1) with the 1990 data, the disabilities are listed as a "work disability" while this distinction is not made with 2000 or ACS data; 2) the ACS data includes the institutionalized population (e.g. persons in prisons and group homes) while this population is not included in 1990 or 2000; and 3) the age groupings changed over the years.

(11) The category Bachelor's Degree or Higher under the heading Educational Attainment Trends is a subset of the category High School Graduate or Higher.

(12) Income of households. This includes the income of the householder and all other individuals 15 years old and over in the household, whether they are related to the householder or not. Because many households consist of only one person, average household income is usually less than average family income.

(13) Income of families. In compiling statistics on family income, the incomes of all members 15 years old and over related to the householder are summed and treated as a single amount.

(14) Age trends. The median age for 1990 is not available.

## Land Use Data

(15) The Land Use information Indicates acreages and percentages for the generalized land use types used to group parcel-specific, existing land use assigned by the county property appraiser office according to the Florida Department of Revenue land use codes.

## Community Facilities Data

- (16) Assisted Rental Housing Units - Identifies multifamily rental developments that receive funding assistance under federal, state, and local government programs to offer affordable housing as reported by the Shimberg Center for Housing Studies, University of Florida.
- (17) Mobile Home Parks - Identifies approved or acknowledged mobile home parks reported by the Florida Department of Business and Professional Regulation and Florida Department of Health.
- (18) Migrant Camps - Identifies migrant labor camp facilities inspected by the Florida Department of Health.
- (19) Group Care Facilities - Identifies group care facilities inspected by the Florida Department of Health.
- (20) Community Center and Fraternal Association Facilities - Identifies facilities reported by multiple sources.
- (21) Law Enforcement Correctional Facilities - Identifies facilities reported by multiple sources.
- (22) Cultural Centers - Identifies cultural centers including organizations, buildings, or complexes that promote culture and arts (e.g., aquariums and zoological facilities; arboreta and botanical gardens; dinner theaters; drive-ins; historical places and services; libraries; motion picture theaters; museums and art galleries; performing arts centers; performing arts theaters; planetariums; studios and art galleries; and theater producers stage facilities) reported by multiple sources.
- (23) Fire Department and Rescue Station Facilities - Identifies facilities reported by multiple sources.
- (24) Government Buildings - Identifies local, state, and federal government buildings reported by multiple sources.
- (25) Health Care Facilities - Identifies health care facilities including abortion clinics, dialysis clinics, medical doctors, nursing homes, osteopaths, state laboratories/clinics, and surgicenters/walk-in clinics reported by the Florida Department of Health.
- (26) Hospital Facilities - Identifies hospital facilities reported by multiple sources.
- (27) Law Enforcement Facilities - Identifies law enforcement facilities reported by multiple sources.
- (28) Parks and Recreational Facilities - Identifies parks and recreational facilities reported by multiple sources.
- (29) Religious Center Facilities - Identifies religious centers including churches, temples, synagogues, mosques, chapels, centers, and other types of religious facilities reported by multiple sources.
- (30) Private and Public Schools - Identifies private and public schools reported by multiple sources.
- (31) Social Service Centers - Identifies social service centers reported by multiple sources.
- (32) Veteran Organizations and Facilities

# County Data Sources

## ACS vs Census Data

(1) The 2010 Census data is represented by a combination of decennial and ACS (2006-2010) data. The General Population Trends, Race and Ethnicity Trends, Age Trends are entirely from decennial. The Income Trends, Language Trends are entirely from the ACS. The Housing Trends section is derived from both: Decennial (Total # Housing Units, Housing Units per Acre, Owner-Occupied Units, Renter-Occupied Units, Vacant Units); ACS (Single Family Units, Multi-family Units, Mobile Homes, Median Housing Value, Occupied Housing Units w/No Vehicle).

## About the Census Data

(34) Use caution when comparing the 100% count data (Decennial Census) to the sample-based data (ACS). In any given year, about one in 40 U.S. households will receive the ACS questionnaire. Over any five-year period, about one in eight households will receive the questionnaire, as compared to about one in six that received the long form questionnaire for the Decennial Census 2000. (Source: [https://www.census.gov/content/dam/Census/programs-surveys/acs/news/10ACS\\_keyfacts.pdf](https://www.census.gov/content/dam/Census/programs-surveys/acs/news/10ACS_keyfacts.pdf)) The U.S. Census Bureau provides help with this process: <https://www.census.gov/programs-surveys/acs/guidance/comparing-acs-data.html>

(35) Race and ethnicity are separate questions on the Census questionnaire. Individuals can report multiple race and ethnicity answers; therefore, numbers in the Race and Ethnicity portion of this report may add up to be greater than the total population. In addition, use caution when interpreting changes in race and ethnicity over time. Starting with the 2000 Decennial Census, respondents could select one or more race categories. Also in 2000, the placement of the question about Hispanic origin changed, helping to increase responsiveness to the Hispanic-origin question. Because of these and other changes, the 1990 data on race and ethnicity are not directly comparable with data from later censuses. (Source: <https://www.census.gov/library/publications/2001/dec/c2kbr01-01.html>)

(36) The "Minority" calculations use both the race and ethnicity responses from Census and ACS data. In this report, "Minority" refers to individuals who list a race other than White and/or list their ethnicity as Hispanic/Latino. In other words, people who are multi-racial, any single race other than White, or Hispanic/Latino of any race are considered minorities. We use the following formula:  $MINORITY = TOTALPOP - WHITE\_NH$  where TOTALPOP is the Total Population and WHITE\_NH is the population with a race of White alone and an ethnicity of Not Hispanic or Latino. Translating this to the field names used in the census ACS source data, the formula looks like this:  $MINORITY = B01003\_E001 - B03002\_E003$ . (Note, the WHITE\_NH population is not reported separately in this report.)

(37) Disability data is not included in the 2010 Decennial Census or the 2006-2010 ACS. This data is available in the ACS 2017-2021 ACS. Because of changes made to the Census and ACS questions between 1990 and ACS, disability variables should not be compared from year to year. For example: 1) with the 1990 data, the disabilities are listed as a "work disability" while this distinction is not made with 2000 or ACS data; 2) the ACS data includes the institutionalized population (e.g. persons in prisons and group homes) while this population is not included in 1990 or 2000; and 3) the age groupings changed over the years.

(38) The category Bachelor's Degree or Higher under the heading Educational Attainment Trends is a subset of the category High School Graduate or Higher.

## Metadata

- (39) Community and Fraternal Centers [https://etdmpub.florida-estat.org/meta/gc\\_communitycenter.xml](https://etdmpub.florida-estat.org/meta/gc_communitycenter.xml)
- (40) Correctional Facilities in Florida [https://etdmpub.florida-estat.org/meta/gc\\_correctional.xml](https://etdmpub.florida-estat.org/meta/gc_correctional.xml)
- (41) Cultural Centers in Florida [https://etdmpub.florida-estat.org/meta/gc\\_culturecenter.xml](https://etdmpub.florida-estat.org/meta/gc_culturecenter.xml)
- (42) Fire Department and Rescue Station Facilities in Florida [https://etdmpub.florida-estat.org/meta/gc\\_firestat.xml](https://etdmpub.florida-estat.org/meta/gc_firestat.xml)
- (43) Local, State, and Federal Government Buildings in Florida [https://etdmpub.florida-estat.org/meta/gc\\_govbuild.xml](https://etdmpub.florida-estat.org/meta/gc_govbuild.xml)
- (44) Florida Health Care Facilities [https://etdmpub.florida-estat.org/meta/gc\\_health.xml](https://etdmpub.florida-estat.org/meta/gc_health.xml)
- (45) Hospital Facilities in Florida [https://etdmpub.florida-estat.org/meta/gc\\_hospitals.xml](https://etdmpub.florida-estat.org/meta/gc_hospitals.xml)
- (46) Law Enforcement Facilities in Florida [https://etdmpub.florida-estat.org/meta/gc\\_lawenforce.xml](https://etdmpub.florida-estat.org/meta/gc_lawenforce.xml)
- (47) Florida Parks and Recreational Facilities [https://etdmpub.florida-estat.org/meta/gc\\_parks.xml](https://etdmpub.florida-estat.org/meta/gc_parks.xml)
- (48) Religious Centers [https://etdmpub.florida-estat.org/meta/gc\\_religion.xml](https://etdmpub.florida-estat.org/meta/gc_religion.xml)
- (49) Florida Public and Private Schools [https://etdmpub.florida-estat.org/meta/gc\\_schools.xml](https://etdmpub.florida-estat.org/meta/gc_schools.xml)
- (50) Social Service Centers [https://etdmpub.florida-estat.org/meta/gc\\_socialservice.xml](https://etdmpub.florida-estat.org/meta/gc_socialservice.xml)
- (51) Assisted Rental Housing Units in Florida [https://etdmpub.florida-estat.org/meta/gc\\_assisted\\_housing.xml](https://etdmpub.florida-estat.org/meta/gc_assisted_housing.xml)
- (52) Group Care Facilities <https://etdmpub.florida-estat.org/meta/groupcare.xml>
- (53) Mobile Home Parks in Florida [https://etdmpub.florida-estat.org/meta/gc\\_mobilehomes.xml](https://etdmpub.florida-estat.org/meta/gc_mobilehomes.xml)
- (54) Migrant Camps in Florida <https://etdmpub.florida-estat.org/meta/migrant.xml>
- (55) Veteran Organizations and Facilities [https://etdmpub.florida-estat.org/meta/gc\\_veterans.xml](https://etdmpub.florida-estat.org/meta/gc_veterans.xml)
- (56) Generalized Land Use [https://etdmpub.florida-estat.org/meta/lu\\_gen.xml](https://etdmpub.florida-estat.org/meta/lu_gen.xml)
- (57) Census Block Groups in Florida [https://etdmpub.florida-estat.org/meta/e2\\_cenacs\\_cci.xml](https://etdmpub.florida-estat.org/meta/e2_cenacs_cci.xml)
- (58) 1990 Census Block Groups in Florida [https://etdmpub.florida-estat.org/meta/e2\\_cenblkgrp\\_1990\\_cci.xml](https://etdmpub.florida-estat.org/meta/e2_cenblkgrp_1990_cci.xml)
- (59) 2000 Census Block Groups in Florida [https://etdmpub.florida-estat.org/meta/e2\\_cenblkgrp\\_2000\\_cci.xml](https://etdmpub.florida-estat.org/meta/e2_cenblkgrp_2000_cci.xml)
- (60) 2010 Census Block Groups in Florida [https://etdmpub.florida-estat.org/meta/e2\\_cenblkgrp\\_2010\\_cci.xml](https://etdmpub.florida-estat.org/meta/e2_cenblkgrp_2010_cci.xml)