

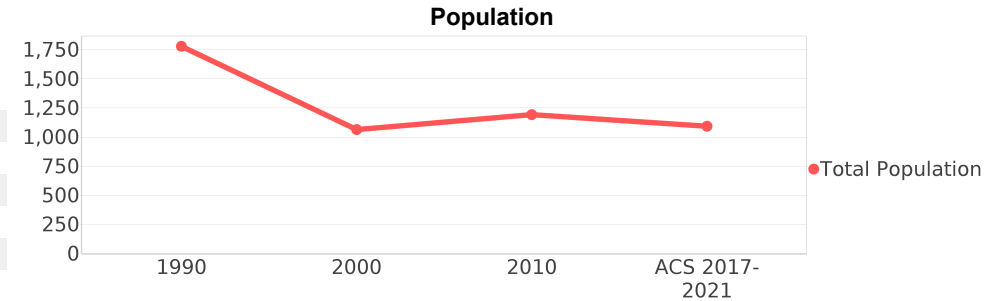
## Midway (CDP)

Area: [2](#) 0.737 square miles  
 Jurisdiction - Cities: [3](#) Sanford  
 Jurisdiction - Counties: [3](#) Seminole



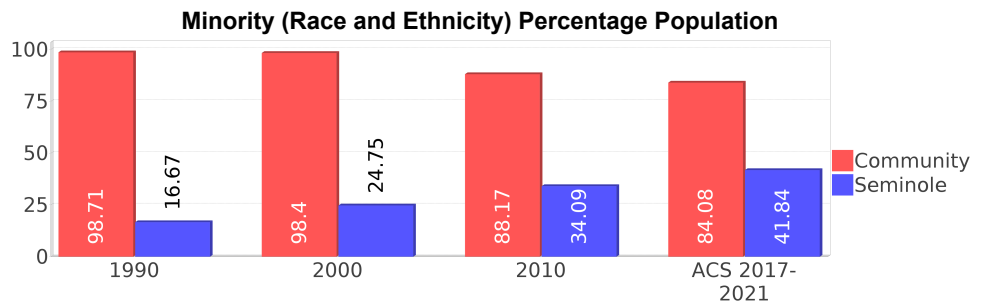
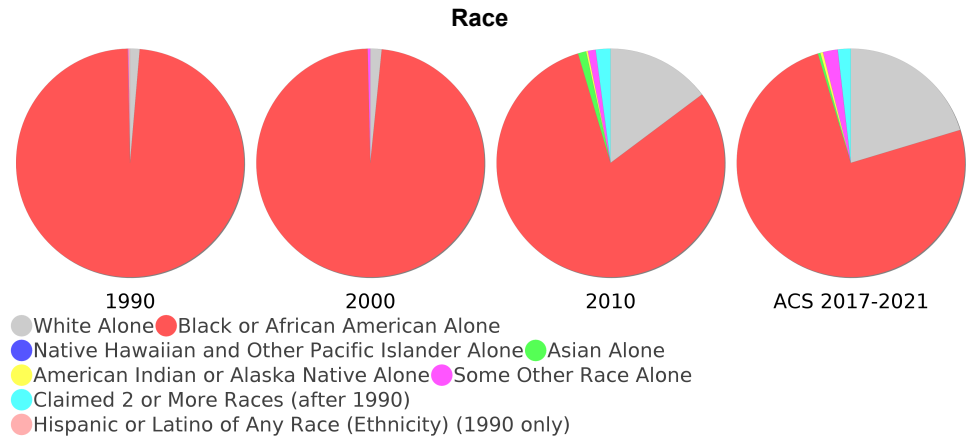
## General Population Trends

Description	1990	2000	2010 <sup>1</sup>	ACS 2017-2021
Total Population	1,780	1,065	1,192	1,093
Total Households	542	382	423	435
Average Persons per Acre	2.77	2.05	3.88	3.69
Average Persons per Household	3.26	2.74	3.00	2.95
Average Persons per Family	3.71	3.30	3.00	3.58
Males	822	553	606	463
Females	957	511	586	629



## Race and Ethnicity Trends <sup>5, 8, 9</sup>

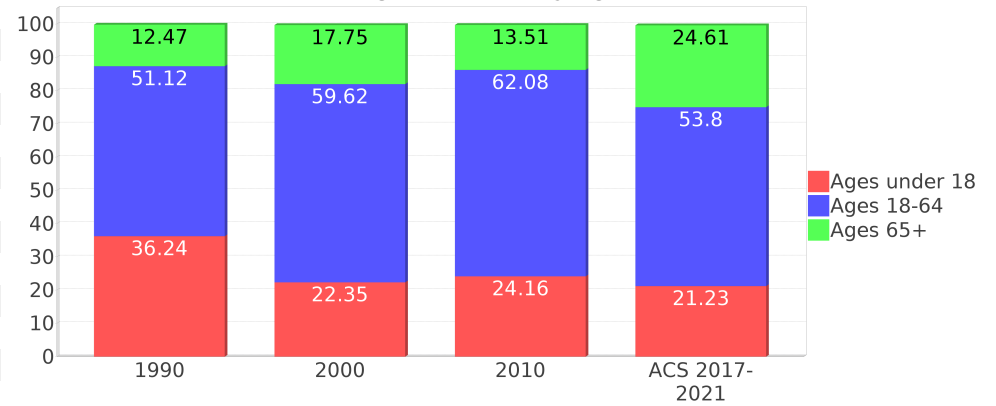
Description	1990	2000	2010 <sup>1</sup>	ACS 2017-2021
White Alone	24 (1.35%)	17 (1.60%)	176 (14.77%)	222 (20.31%)
Black or African American Alone	1,753 (98.48%)	1,043 (97.93%)	960 (80.54%)	818 (74.84%)
Native Hawaiian and Other Pacific Islander Alone	0 (0.00%)	0 (0.00%)	0 (0.00%)	0 (0.00%)
Asian Alone	0 (0.00%)	0 (0.00%)	14 (1.17%)	4 (0.37%)
American Indian or Alaska Native Alone	0 (0.00%)	0 (0.00%)	3 (0.25%)	4 (0.37%)
Some Other Race Alone	2 (0.11%)	4 (0.38%)	13 (1.09%)	23 (2.10%)
Claimed 2 or More Races	NA (NA)	0 (0.00%)	25 (2.10%)	20 (1.83%)
Hispanic or Latino of Any Race (Ethnicity)	4 (0.22%)	2 (0.19%)	63 (5.29%)	96 (8.78%)
Not Hispanic or Latino (Ethnicity)	1,776 (99.78%)	1,063 (99.81%)	1,129 (94.71%)	997 (91.22%)
Minority (Race and Ethnicity)	1,757 (98.71%)	1,048 (98.40%)	1,051 (88.17%)	919 (84.08%)



## Age Trends <sup>5</sup>

Description	1990	2000	2010 <sup>1</sup>	ACS 2017-2021
Under Age 5	9.89%	5.07%	6.63%	3.11%
Ages 5-17	26.35%	17.28%	17.53%	18.12%
Ages 18-21	5.34%	6.48%	5.45%	1.37%
Ages 22-29	9.83%	6.76%	10.74%	7.78%
Ages 30-39	12.25%	10.33%	13.59%	11.53%
Ages 40-49	9.27%	19.06%	12.67%	16.10%
Ages 50-64	14.44%	17.00%	19.63%	17.02%
Age 65 and Over	12.47%	17.75%	13.51%	24.61%
-Ages 65-74	6.97%	10.52%	7.72%	15.37%
-Ages 75-84	3.93%	5.54%	4.03%	7.96%
-Age 85 and Over	1.52%	1.69%	1.59%	1.19%
Median Age	NA	36	35	39

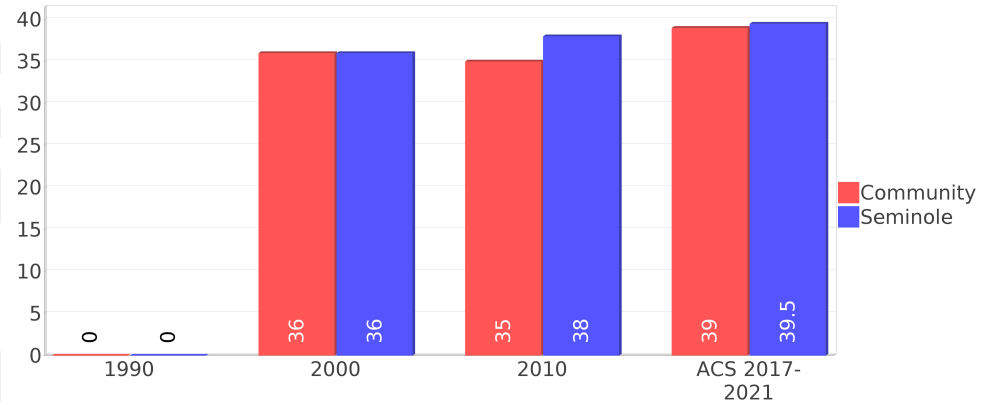
Percentage Population by Age Group



## Income Trends <sup>12, 13, 5</sup>

Description	1990	2000	2010 <sup>1</sup>	ACS 2017-2021
Median Household Income	\$25,625	\$31,625	\$44,107	\$63,906
Median Family Income	\$21,979	\$32,310	\$55,750	\$84,152
Population below Poverty Level	36.69%	21.60%	35.32%	14.36%
Households below Poverty Level	36.53%	28.01%	37.83%	21.15%
Households with Public Assistance Income	24.17%	9.95%	10.87%	0.46%

Median Age Comparison



## Disability Trends <sup>10</sup>

See the Data Sources section below for an explanation about the differences in disability data among the various years.

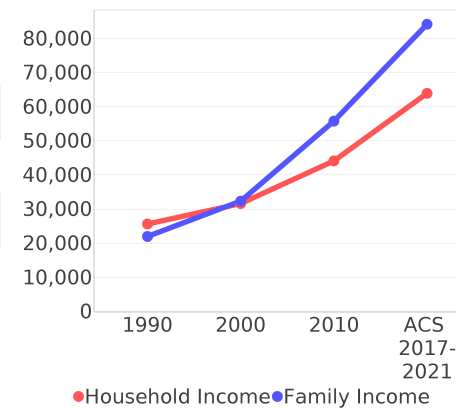
Description	1990	2000	2010 <sup>1</sup>	ACS 2017-2021
Population 16 To 64 Years with a disability	240 (19.75%)	251 (24.85%)	(NA)	(NA)
Population 20 To 64 Years with a disability	(NA)	(NA)	(NA)	115 (19.62%)

## Educational Attainment Trends <sup>11, 5</sup>

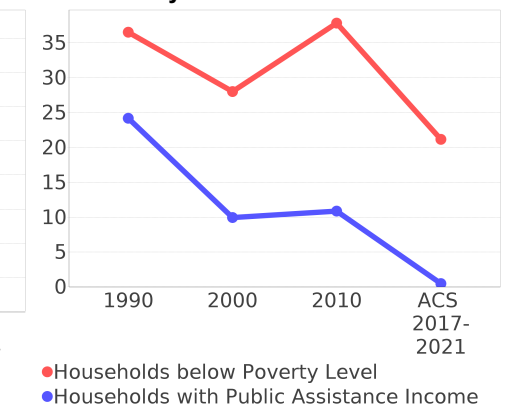
Age 25 and Over

Description	1990	2000	2010 <sup>1</sup>	ACS 2017-2021
Less than 9th Grade	321 (32.99%)	149 (20.05%)	37 (4.01%)	9 (1.10%)
9th to 12th Grade, No Diploma	276 (28.37%)	216 (29.07%)	280 (30.37%)	140 (17.09%)
High School Graduate or Higher	374 (38.44%)	378 (50.87%)	604 (65.51%)	669 (81.68%)
Bachelor's Degree or Higher	41 (4.21%)	27 (3.63%)	64 (6.94%)	114 (13.92%)

Income Trends



Poverty and Public Assistance



## Language Trends <sup>5</sup>

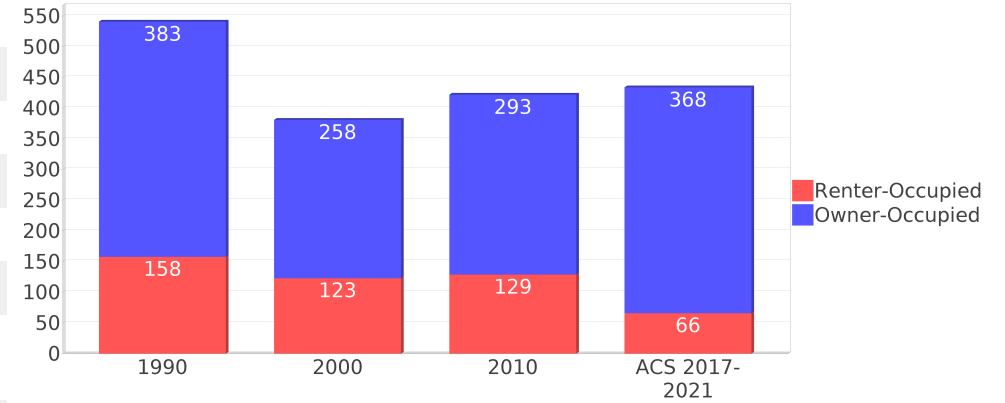
Age 5 and Over

Description	1990	2000	2010 <sup>1</sup>	ACS 2017-2021
Speaks English Well	0 (0.00%)	13 (1.29%)	10 (0.83%)	2 (0.19%)
Speaks English Not Well	NA (NA)	0 (0.00%)	3 (0.25%)	0 (0.00%)
Speaks English Not at All	NA (NA)	0 (0.00%)	0 (0.00%)	0 (0.00%)
Speaks English Not Well or Not at All	0 (0.00%)	0 (0.00%)	3 (0.25%)	0 (0.00%)
Speaks English Less than Very Well	NA (NA)	13 (1.29%)	13 (1.09%)	2 (0.19%)

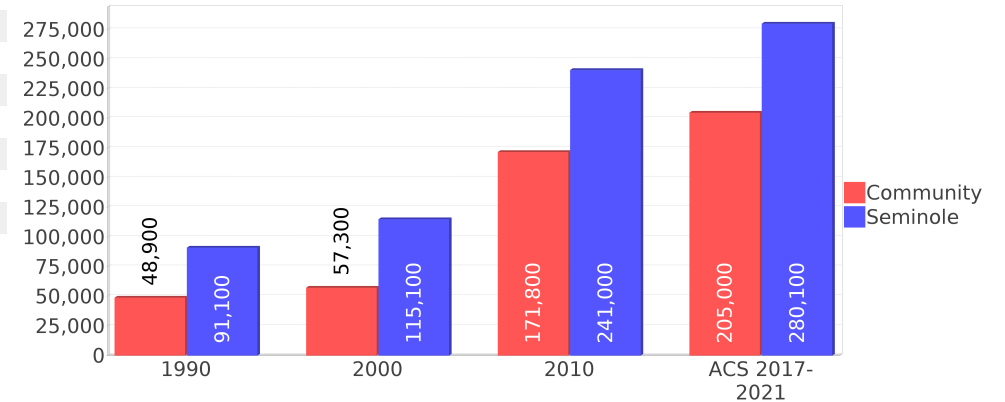
## Housing Trends <sup>5</sup>

Description	1990	2000	2010 <sup>1</sup>	ACS 2017-2021
Total	596	413	480	479
Units per Acre	1.27	0.88	1.07	1.07
Single-Family Units	518	397	499	470
Multi-Family Units	9	14	52	9
Mobile Home Units	1	0	20	0
Owner-Occupied Units	383	258	293	368
Renter-Occupied Units	158	123	129	66
Vacant Units	53	31	57	43
Median Housing Value	\$48,900	\$57,300	\$171,800	\$205,000
Occupied Housing Units w/No Vehicle	89 (16.39%)	21 (5.50%)	84 (19.86%)	22 (5.05%)

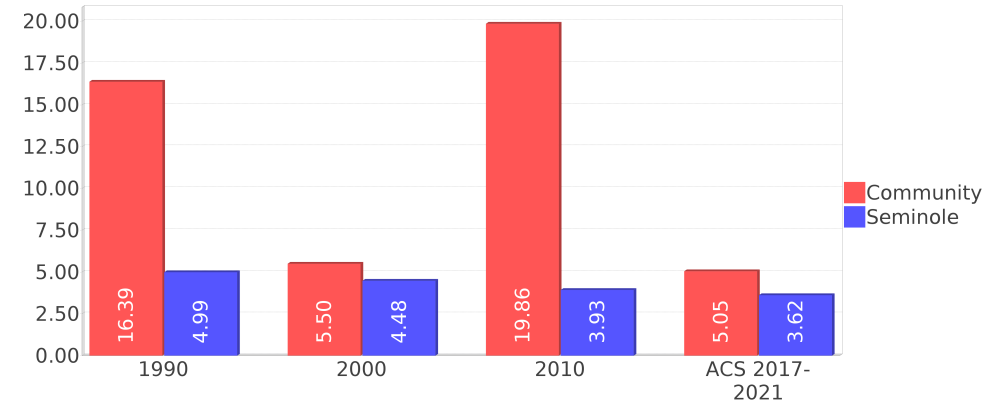
## Housing Tenure



## Median Housing Value Comparison



## Occupied Units With No Vehicles Available



## Geographic Mobility

Description	ACS 2017-2021
Median year householder moved into unit - Total	2011
Median year householder moved into unit - Owner Occupied	2006
Median year householder moved into unit - Renter Occupied	2016
Abroad 1 year ago	28
Different house in United States 1 year ago	108
Same house 1 year ago	951
Geographical Mobility in the Past Year - Total	1,088

## Computers and Internet

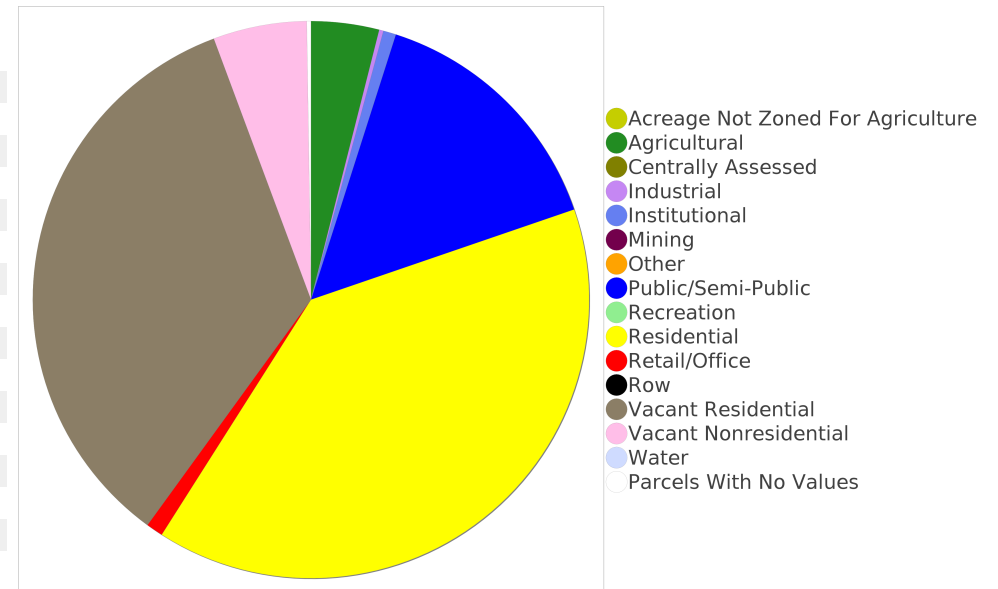
Description	ACS 2017-2021
Total Households Types of Computers in HH	435
Households with 1 or more device	355
Households with no computer	79
Total Households Presence and Types of Internet Subscriptions	435
Households with an internet subscription	301
Households with internet access without a subscription	49
Households with no internet access	83

## Household Languages

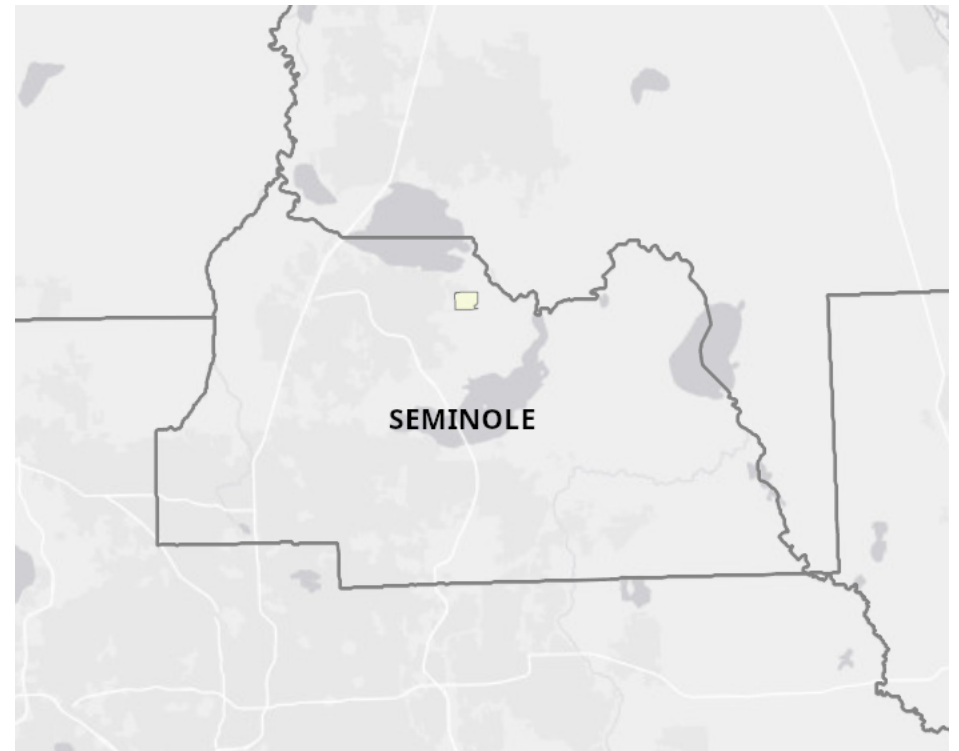
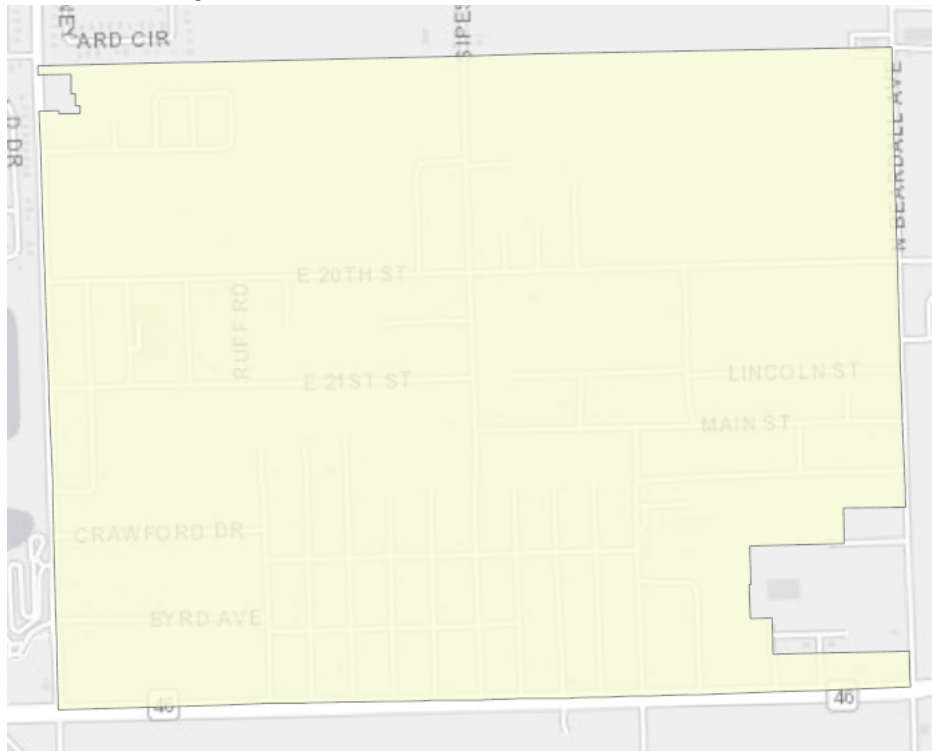
Description	ACS 2017-2021
Total Households by Household Language	435
Household Not Limited English Speaking Status	435
Spanish: Limited English speaking household	0
Indo-European languages: Limited English speaking household	0
Asian and Pacific Island languages: Limited English speaking household	0
Other languages: Limited English speaking household	0

## Existing Land Use <sup>15</sup>

Land Use Type	Acres	Percentage
Acreage Not Zoned For Agriculture	<0.5	<0.11%
Agricultural	16	3.39%
Centrally Assessed	0	0.00%
Industrial	1	0.21%
Institutional	3	0.64%
Mining	0	0.00%
Other	<0.5	<0.11%
Public/Semi-Public	60	12.73%
Recreation	0	0.00%
Residential	159	33.73%
Retail/Office	4	0.85%
Row	0	0.00%
Vacant Residential	139	29.49%
Vacant Nonresidential	22	4.67%
Water	0	0.00%
Parcels With No Values	1	0.21%



## Location Maps



## Community Facilities

The community facilities information below is useful in a variety of ways for environmental evaluations. These community resources should be evaluated for potential sociocultural effects, such as accessibility and relocation potential. The facility types may indicate the types of population groups present in the project study area. Facility staff and leaders can be sources of community information such as who uses the facility and how it is used. Additionally, community facilities are potential public meeting venues.

### Community and Fraternal Centers

Facility Name	Address	Zip Code
BOYS & GIRLS CLUB - MIDWAY EXTENSION BRANCH	2405 RIGHTWAY	32771

### Florida Parks and Recreational Facilities

Facility Name	Address	Zip Code
MIDWAY PARK	2045 HURSTON AVE	32771

### Religious Centers

Facility Name	Address	Zip Code
MORNING GLORY	2600 E STATE RD 46	32771
BYRD MEMORIAL CHURCH	2140 SIPES AVE	32771
NEW ZION PRIMITIVE BAPTIST CHURCH	2390 GREEN WAY AVENUE	32771
BIBLE PRINCIPLES FOR LIFE MINISTRY	2750 MIDWAY AVE	32771
PROGRESS MISSIONARY BAPTIST	2850 MIDWAY AVENUE	32771
ST JAMES HOUSE OF PRAYRE	2146 CHURCH STREET	32771
REDDICK MEMORIAL FIRST BORN CHURCH	3155 BROADWAY	32771
REFUGE CHURCH OF OUR LORD	3750 WASHINGTON STREET	32771
ST MATTHEWS MISSIONARY CHURCH	3724 MAIN STREET	32771
NEW BETHEL AFRICAN METHODIST EPISCOPAL CHURCH	3615 MAIN STREET	32771
MT ZION MISSIONARY BAPTIST CHURCH	2001 SIPES AVE	32771

## Block Groups

The following Census Block Groups were used to calculate demographics for this report.

### 1990 Census Block Groups

121170202023, 121170211001, 121170211002, 121170210001, 121170211009

### 2000 Census Block Groups

121170211002, 121170202023, 121170210001, 121170211001

### 2010 Census Block Groups

121170211002, 121170211001, 121170202023

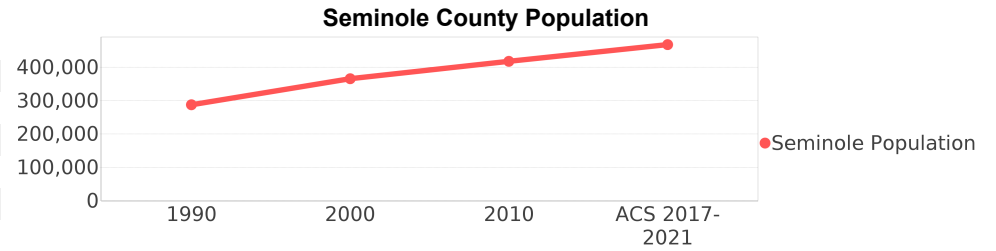
### Census Block Groups

121170211001, 121170202021, 121170211002

# Seminole County Demographic Profile

## General Population Trends - Seminole <sup>5</sup>

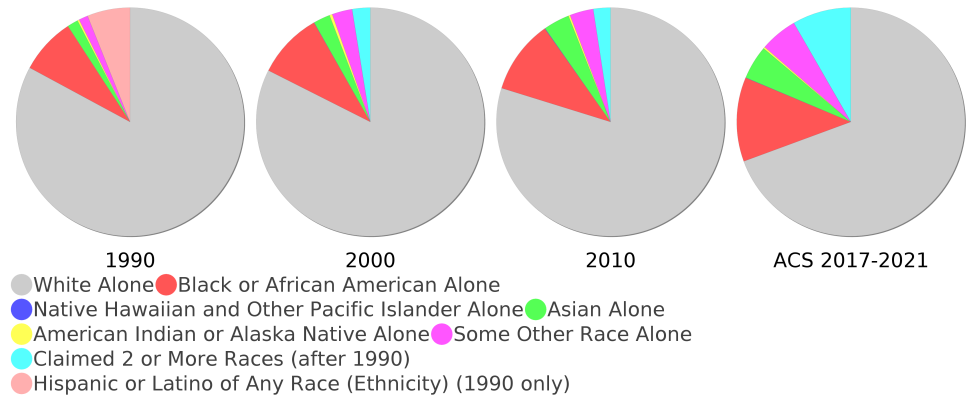
Description	1990	2000	2010 <sup>1</sup>	ACS 2017-2021
Total Population	287,529	365,196	417,330	467,382
Total Households	107,657	139,572	152,682	180,891
Average Persons per Acre	1.303	1.655	1.891	2.11
Average Persons per Household	2.671	2.59	3.00	2.56
Average Persons per Family	3.169	3.142	3.361	3.18
Males	140,587	178,738	202,489	227,242



## Race and Ethnicity Trends - Seminole <sup>5, 8, 9</sup>

Description	1990	2000	2010 <sup>1</sup>	ACS 2017-2021
White Alone	253,621 (88.21%)	301,008 (82.42%)	332,935 (79.78%)	324,313 (69.39%)
Black or African American Alone	24,314 (8.46%)	34,106 (9.34%)	43,520 (10.43%)	55,686 (11.91%)
Native Hawaiian and Other Pacific Islander Alone	(NA)	116 (0.03%)	240 (0.06%)	176 (0.04%)
Asian Alone	4,746 (1.65%)	8,682 (2.38%)	15,483 (3.71%)	22,437 (4.80%)
American Indian or Alaska Native Alone	803 (0.28%)	1,434 (0.39%)	1,040 (0.25%)	1,066 (0.23%)
Some Other Race Alone	3,948 (1.37%)	10,515 (2.88%)	13,929 (3.34%)	24,764 (5.30%)
Claimed 2 or More Races	(NA)	9,335 (2.56%)	10,183 (2.44%)	38,940 (8.33%)
Hispanic or Latino of Any Race (Ethnicity)	18,606 (6.47%)	40,656 (11.13%)	67,555 (16.19%)	105,088 (22.48%)
Not Hispanic or Latino (Ethnicity)	268,923 (93.53%)	324,540 (88.87%)	349,775 (83.81%)	362,294 (77.52%)
Minority (Race and Ethnicity)	47,917 (16.67%)	90,397 (24.75%)	142,266 (34.09%)	195,538 (41.84%)

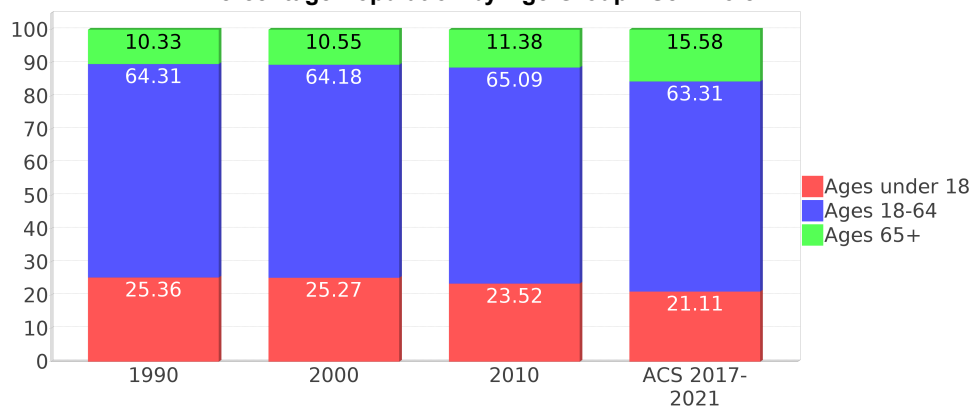
## Seminole County Race



## Age Trends - Seminole <sup>5</sup>

Description	1990	2000	2010 <sup>1</sup>	ACS 2017-2021
Under Age 5	6.97%	6.37%	5.56%	5.16%
Ages 5-17	18.39%	18.90%	17.96%	15.96%
Ages 18-21	5.41%	4.73%	5.96%	4.48%
Ages 22-29	13.07%	10.16%	10.86%	10.78%
Ages 30-39	18.24%	16.80%	13.12%	14.42%
Ages 40-49	14.90%	16.85%	16.16%	13.76%
Ages 50-64	12.70%	15.65%	19.00%	19.86%
Age 65 and Over	10.33%	10.55%	11.38%	15.58%
-Ages 65-74	6.29%	5.76%	6.07%	9.37%
-Ages 75-84	3.14%	3.69%	3.66%	4.29%
-Age 85 and Over	0.89%	1.10%	1.65%	1.93%
Median Age	NA	36	38	39.5

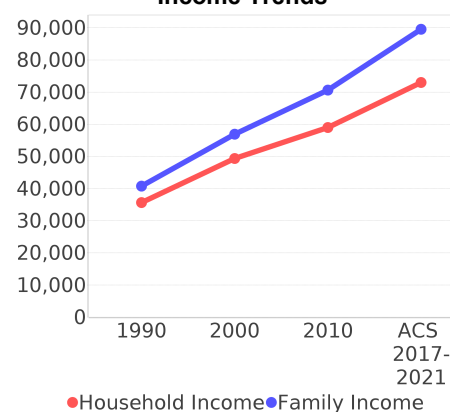
Percentage Population by Age Group - Seminole



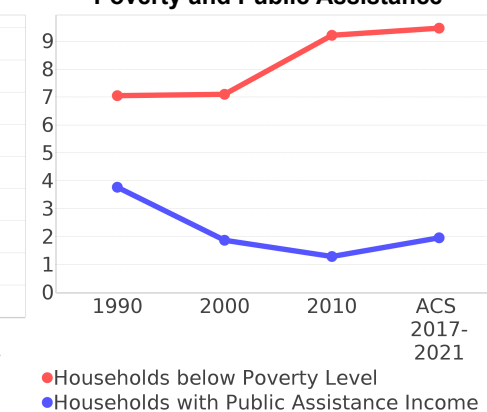
## Income Trends - Seminole <sup>5</sup>

Description	1990	2000	2010 <sup>1</sup>	ACS 2017-2021
Median Household Income	\$35,637	\$49,326	\$58,971	\$73,002
Median Family Income	\$40,732	\$56,895	\$70,597	\$89,522
Population below Poverty Level	7.22%	7.41%	9.84%	9.47%
Households below Poverty Level	7.05%	7.10%	9.21%	9.47%
Households with Public Assistance Income	3.77%	1.87%	1.29%	1.96%

Income Trends



Poverty and Public Assistance



## Disability Trends - Seminole <sup>10</sup>

See the Data Sources section below for an explanation about the differences in disability data among the various years.

Description	1990	2000	2010 <sup>1</sup>	ACS 2017-2021
Population 16 To 64 Years with a disability	12,512 (5.68%)	39,539 (11.65%)	NA (NA)	NA (NA)
Population 20 To 64 Years with a disability	NA (NA)	NA (NA)	NA (NA)	22,554 (7.93%)

## Educational Attainment Trends - Seminole <sup>11, 5</sup>

Age 25 and Over

Description	1990	2000	2010 <sup>1</sup>	ACS 2017-2021
Less than 9th Grade	9,119 (4.85%)	8,186 (3.37%)	7,682 (2.77%)	6,369 (1.93%)
9th to 12th Grade, No Diploma	19,745 (10.51%)	19,337 (7.95%)	18,066 (6.51%)	12,880 (3.89%)
High School Graduate or Higher	159,027 (84.64%)	215,693 (88.68%)	251,731 (90.72%)	311,496 (94.18%)
Bachelor's Degree or Higher	49,454 (26.32%)	75,491 (31.04%)	93,115 (33.56%)	138,702 (41.94%)

## Language Trends - Seminole <sup>5</sup>

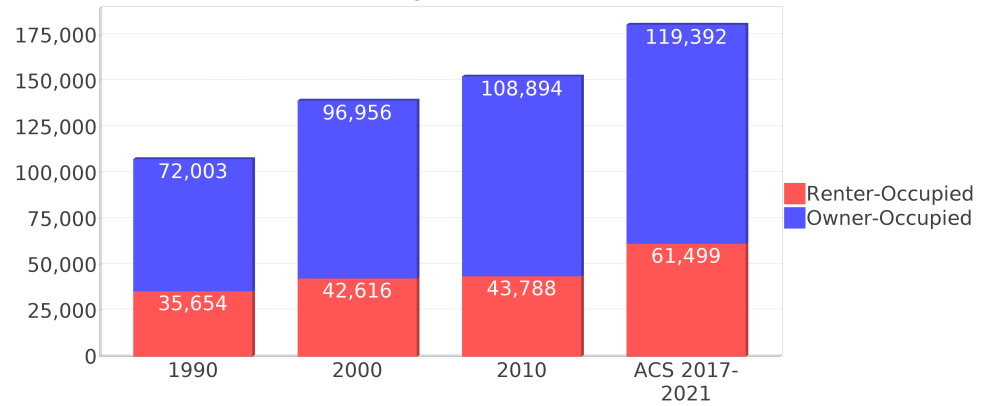
Age 5 and Over

Description	1990	2000	2010 <sup>1</sup>	ACS 2017-2021
Speaks English Well	6,174 (2.31%)	9,924 (2.90%)	14,528 (3.69%)	17,838 (4.02%)
Speaks English Not Well	NA (NA)	6,262 (1.83%)	6,565 (1.67%)	9,784 (2.21%)
Speaks English Not at All	NA (NA)	1,442 (0.42%)	2,255 (0.57%)	2,951 (0.67%)
Speaks English Not Well or Not at All	3,430 (1.28%)	7,704 (2.25%)	8,820 (2.24%)	12,735 (2.87%)
Speaks English Less than Very Well	NA (NA)	17,628 (5.16%)	23,348 (5.92%)	30,573 (6.90%)

## Housing Trends - Seminole <sup>5</sup>

Description	1990	2000	2010 <sup>1</sup>	ACS 2017-2021
Total	117,845	147,079	178,326	192,725
Units per Acre	0.534	0.666	0.808	0.87
Single-Family Units	76,983	104,366	126,827	136,928
Multi-Family Units	25,455	37,467	46,597	51,009
Mobile Home Units	4,497	5,066	4,850	4,710
Owner-Occupied Units	72,003	96,956	108,894	119,392
Renter-Occupied Units	35,654	42,616	43,788	61,499
Vacant Units	10,188	7,507	25,644	11,834
Median Housing Value	\$91,100	\$115,100	\$241,000	\$280,100
Occupied Housing Units w/No Vehicle	5,376 (4.99%)	6,253 (4.48%)	6,002 (3.93%)	6,545 (3.62%)
Median year householder moved into unit - Total	NA	NA	NA	2014
Median year householder moved into unit - Owner Occupied	NA	NA	NA	2008
Median year householder moved into unit - Renter Occupied	NA	NA	NA	2017
Abroad 1 year ago	NA	NA	NA	4,191
Different house in United States 1 year ago	NA	NA	NA	66,068
Same house 1 year ago	NA	NA	NA	393,578
Geographical Mobility in the Past Year - Total	NA	NA	NA	393,578

## Housing Tenure - Seminole



# Data Sources

## ACS vs Census Data

(1) The 2010 Census data is represented by a combination of decennial and ACS (2006-2010) data. The General Population Trends, Race and Ethnicity Trends, Age Trends are entirely from decennial. The Income Trends, Language Trends are entirely from the ACS. The Housing Trends section is derived from both: Decennial (Total # Housing Units, Housing Units per Acre, Owner-Occupied Units, Renter-Occupied Units, Vacant Units); ACS (Single Family Units, Multi-family Units, Mobile Homes, Median Housing Value, Occupied Housing Units w/No Vehicle).

## Area

(2) The geographic area of the community based on a user-defined community boundary or area of interest (AOI) boundary.

## Jurisdiction

(3) Jurisdiction(s) includes local government boundaries that intersect the user-defined community or AOI boundary.

## Goals, Values and History

(4) Information under the headings Goals and Values and History is entered manually by the user before the Sociocultural Data Report (SDR) is generated. This information is usually not available for communities with boundaries that are based on Census-defined places (i.e., not user-specified).

## Demographic Data

(5) Demographic data reported under the headings General Population Trends, Race and Ethnicity Trends, Age Trends, Income Trends, Educational Attainment Trends, Language Trends, and Housing Trends is from the U.S. Decennial Census for 1990 and 2000 and the American Community Survey (ACS) 5-year estimates for 2006-2010 and ACS 2017-2021. The data was gathered at the block group level for user-defined communities, Census places, and AOIs, and at the county level for counties. Depending on the dataset, the data represents 100% counts (Census Summary File 1) or sample-based information (Census Summary File 3 or ACS). For more information about using demographic data, please see the training videos located here: <https://www.fdot.gov/environment/pubs/sce/sce1.shtm>.

## About the Census Data

(6) The block group analysis for ETDM project analysis areas, user-defined communities, Census places, and AOI boundaries do not always correspond precisely to block group boundaries. To estimate the actual population more accurately, the SDR analysis adjusts the geographic area and data of affected block groups using the following methodology:

Delete overlapping census blocks with extremely low populations (2 or fewer people)  
Remove the portion of the block group that lies outside of the analysis area  
Recalculate the demographics assuming an equal area distribution of the population

Note that there may be areas where there is no population.

(7) Use caution when comparing the 100% count data (Decennial Census) to the sample-based data (ACS). In any given year, about one in 40 U.S. households will receive the ACS questionnaire. Over any five-year period, about one in eight households will receive the questionnaire, as compared to about one in six that received the long form questionnaire for the Decennial Census 2000. (Source: [https://www.census.gov/content/dam/Census/programs-surveys/acs/news/10ACS\\_keyfacts.pdf](https://www.census.gov/content/dam/Census/programs-surveys/acs/news/10ACS_keyfacts.pdf)) The U.S. Census Bureau provides help with this process: <https://www.census.gov/programs-surveys/acs/guidance/comparing-acs-data.html>

(8) Race and ethnicity are separate questions on the Census questionnaire. Individuals can report multiple race and ethnicity answers; therefore, numbers in the Race and Ethnicity portion of this report may add up to be greater than the total population. In addition, use caution when interpreting changes in race and ethnicity over time. Starting with the 2000 Decennial Census, respondents could select one or more race categories. Also in 2000, the placement of the question about Hispanic origin changed, helping to increase responsiveness to the Hispanic-origin question. Because of these and other changes, the 1990 data on race and ethnicity are not directly comparable with data from later censuses. (Source: <https://www.census.gov/library/publications/2001/dec/c2kbr01-01.html>)

(9) The "Minority" calculations use both the race and ethnicity responses from Census and ACS data. In this report, "Minority" refers to individuals who list a race other than White and/or list their ethnicity as Hispanic/Latino. In other words, people who are multi-racial, any single race other than White, or Hispanic/Latino of any race are considered minorities. We use the following formula:  $MINORITY = TOTALPOP - WHITE\_NH$  where TOTALPOP is the Total Population and WHITE\_NH is the population with a race of White alone and an ethnicity of Not Hispanic or Latino. Translating this to the field names used in the census ACS source data, the formula looks like this:  $MINORITY = B01003\_E001 - B03002\_E003$ . (Note, the WHITE\_NH population is not reported separately in this report.)

(10) Disability data is not included in the 2010 Decennial Census or the 2006-2010 ACS. This data is available in the ACS 2017-2021 ACS. Because of changes made to the Census and ACS questions between 1990 and ACS, disability variables should not be compared from year to year. For example: 1) with the 1990 data, the disabilities are listed as a "work disability" while this distinction is not made with 2000 or ACS data; 2) the ACS data includes the institutionalized population (e.g. persons in prisons and group homes) while this population is not included in 1990 or 2000; and 3) the age groupings changed over the years.

(11) The category Bachelor's Degree or Higher under the heading Educational Attainment Trends is a subset of the category High School Graduate or Higher.

(12) Income of households. This includes the income of the householder and all other individuals 15 years old and over in the household, whether they are related to the householder or not. Because many households consist of only one person, average household income is usually less than average family income.

(13) Income of families. In compiling statistics on family income, the incomes of all members 15 years old and over related to the householder are summed and treated as a single amount.

(14) Age trends. The median age for 1990 is not available.

## Land Use Data

(15) The Land Use information Indicates acreages and percentages for the generalized land use types used to group parcel-specific, existing land use assigned by the county property appraiser office according to the Florida Department of Revenue land use codes.

## Community Facilities Data

- (16) Assisted Rental Housing Units - Identifies multifamily rental developments that receive funding assistance under federal, state, and local government programs to offer affordable housing as reported by the Shimberg Center for Housing Studies, University of Florida.
- (17) Mobile Home Parks - Identifies approved or acknowledged mobile home parks reported by the Florida Department of Business and Professional Regulation and Florida Department of Health.
- (18) Migrant Camps - Identifies migrant labor camp facilities inspected by the Florida Department of Health.
- (19) Group Care Facilities - Identifies group care facilities inspected by the Florida Department of Health.
- (20) Community Center and Fraternal Association Facilities - Identifies facilities reported by multiple sources.
- (21) Law Enforcement Correctional Facilities - Identifies facilities reported by multiple sources.
- (22) Cultural Centers - Identifies cultural centers including organizations, buildings, or complexes that promote culture and arts (e.g., aquariums and zoological facilities; arboreta and botanical gardens; dinner theaters; drive-ins; historical places and services; libraries; motion picture theaters; museums and art galleries; performing arts centers; performing arts theaters; planetariums; studios and art galleries; and theater producers stage facilities) reported by multiple sources.
- (23) Fire Department and Rescue Station Facilities - Identifies facilities reported by multiple sources.
- (24) Government Buildings - Identifies local, state, and federal government buildings reported by multiple sources.
- (25) Health Care Facilities - Identifies health care facilities including abortion clinics, dialysis clinics, medical doctors, nursing homes, osteopaths, state laboratories/clinics, and surgicenters/walk-in clinics reported by the Florida Department of Health.
- (26) Hospital Facilities - Identifies hospital facilities reported by multiple sources.
- (27) Law Enforcement Facilities - Identifies law enforcement facilities reported by multiple sources.
- (28) Parks and Recreational Facilities - Identifies parks and recreational facilities reported by multiple sources.
- (29) Religious Center Facilities - Identifies religious centers including churches, temples, synagogues, mosques, chapels, centers, and other types of religious facilities reported by multiple sources.
- (30) Private and Public Schools - Identifies private and public schools reported by multiple sources.
- (31) Social Service Centers - Identifies social service centers reported by multiple sources.
- (32) Veteran Organizations and Facilities

# County Data Sources

## ACS vs Census Data

(1) The 2010 Census data is represented by a combination of decennial and ACS (2006-2010) data. The General Population Trends, Race and Ethnicity Trends, Age Trends are entirely from decennial. The Income Trends, Language Trends are entirely from the ACS. The Housing Trends section is derived from both: Decennial (Total # Housing Units, Housing Units per Acre, Owner-Occupied Units, Renter-Occupied Units, Vacant Units); ACS (Single Family Units, Multi-family Units, Mobile Homes, Median Housing Value, Occupied Housing Units w/No Vehicle).

## About the Census Data

(34) Use caution when comparing the 100% count data (Decennial Census) to the sample-based data (ACS). In any given year, about one in 40 U.S. households will receive the ACS questionnaire. Over any five-year period, about one in eight households will receive the questionnaire, as compared to about one in six that received the long form questionnaire for the Decennial Census 2000. (Source: [https://www.census.gov/content/dam/Census/programs-surveys/acs/news/10ACS\\_keyfacts.pdf](https://www.census.gov/content/dam/Census/programs-surveys/acs/news/10ACS_keyfacts.pdf)) The U.S. Census Bureau provides help with this process: <https://www.census.gov/programs-surveys/acs/guidance/comparing-acs-data.html>

(35) Race and ethnicity are separate questions on the Census questionnaire. Individuals can report multiple race and ethnicity answers; therefore, numbers in the Race and Ethnicity portion of this report may add up to be greater than the total population. In addition, use caution when interpreting changes in race and ethnicity over time. Starting with the 2000 Decennial Census, respondents could select one or more race categories. Also in 2000, the placement of the question about Hispanic origin changed, helping to increase responsiveness to the Hispanic-origin question. Because of these and other changes, the 1990 data on race and ethnicity are not directly comparable with data from later censuses. (Source: <https://www.census.gov/library/publications/2001/dec/c2kbr01-01.html>)

(36) The "Minority" calculations use both the race and ethnicity responses from Census and ACS data. In this report, "Minority" refers to individuals who list a race other than White and/or list their ethnicity as Hispanic/Latino. In other words, people who are multi-racial, any single race other than White, or Hispanic/Latino of any race are considered minorities. We use the following formula:  $MINORITY = TOTALPOP - WHITE\_NH$  where TOTALPOP is the Total Population and WHITE\_NH is the population with a race of White alone and an ethnicity of Not Hispanic or Latino. Translating this to the field names used in the census ACS source data, the formula looks like this:  $MINORITY = B01003\_E001 - B03002\_E003$ . (Note, the WHITE\_NH population is not reported separately in this report.)

(37) Disability data is not included in the 2010 Decennial Census or the 2006-2010 ACS. This data is available in the ACS 2017-2021 ACS. Because of changes made to the Census and ACS questions between 1990 and ACS, disability variables should not be compared from year to year. For example: 1) with the 1990 data, the disabilities are listed as a "work disability" while this distinction is not made with 2000 or ACS data; 2) the ACS data includes the institutionalized population (e.g. persons in prisons and group homes) while this population is not included in 1990 or 2000; and 3) the age groupings changed over the years.

(38) The category Bachelor's Degree or Higher under the heading Educational Attainment Trends is a subset of the category High School Graduate or Higher.

## Metadata

- (39) Community and Fraternal Centers [https://etdmpub.florida-estat.org/meta/gc\\_communitycenter.xml](https://etdmpub.florida-estat.org/meta/gc_communitycenter.xml)
- (40) Correctional Facilities in Florida [https://etdmpub.florida-estat.org/meta/gc\\_correctional.xml](https://etdmpub.florida-estat.org/meta/gc_correctional.xml)
- (41) Cultural Centers in Florida [https://etdmpub.florida-estat.org/meta/gc\\_culturecenter.xml](https://etdmpub.florida-estat.org/meta/gc_culturecenter.xml)
- (42) Fire Department and Rescue Station Facilities in Florida [https://etdmpub.florida-estat.org/meta/gc\\_firestat.xml](https://etdmpub.florida-estat.org/meta/gc_firestat.xml)
- (43) Local, State, and Federal Government Buildings in Florida [https://etdmpub.florida-estat.org/meta/gc\\_govbuild.xml](https://etdmpub.florida-estat.org/meta/gc_govbuild.xml)
- (44) Florida Health Care Facilities [https://etdmpub.florida-estat.org/meta/gc\\_health.xml](https://etdmpub.florida-estat.org/meta/gc_health.xml)
- (45) Hospital Facilities in Florida [https://etdmpub.florida-estat.org/meta/gc\\_hospitals.xml](https://etdmpub.florida-estat.org/meta/gc_hospitals.xml)
- (46) Law Enforcement Facilities in Florida [https://etdmpub.florida-estat.org/meta/gc\\_lawenforce.xml](https://etdmpub.florida-estat.org/meta/gc_lawenforce.xml)
- (47) Florida Parks and Recreational Facilities [https://etdmpub.florida-estat.org/meta/gc\\_parks.xml](https://etdmpub.florida-estat.org/meta/gc_parks.xml)
- (48) Religious Centers [https://etdmpub.florida-estat.org/meta/gc\\_religion.xml](https://etdmpub.florida-estat.org/meta/gc_religion.xml)
- (49) Florida Public and Private Schools [https://etdmpub.florida-estat.org/meta/gc\\_schools.xml](https://etdmpub.florida-estat.org/meta/gc_schools.xml)
- (50) Social Service Centers [https://etdmpub.florida-estat.org/meta/gc\\_socialservice.xml](https://etdmpub.florida-estat.org/meta/gc_socialservice.xml)
- (51) Assisted Rental Housing Units in Florida [https://etdmpub.florida-estat.org/meta/gc\\_assisted\\_housing.xml](https://etdmpub.florida-estat.org/meta/gc_assisted_housing.xml)
- (52) Group Care Facilities <https://etdmpub.florida-estat.org/meta/groupcare.xml>
- (53) Mobile Home Parks in Florida [https://etdmpub.florida-estat.org/meta/gc\\_mobilehomes.xml](https://etdmpub.florida-estat.org/meta/gc_mobilehomes.xml)
- (54) Migrant Camps in Florida <https://etdmpub.florida-estat.org/meta/migrant.xml>
- (55) Veteran Organizations and Facilities [https://etdmpub.florida-estat.org/meta/gc\\_veterans.xml](https://etdmpub.florida-estat.org/meta/gc_veterans.xml)
- (56) Generalized Land Use [https://etdmpub.florida-estat.org/meta/lu\\_gen.xml](https://etdmpub.florida-estat.org/meta/lu_gen.xml)
- (57) Census Block Groups in Florida [https://etdmpub.florida-estat.org/meta/e2\\_cenacs\\_cci.xml](https://etdmpub.florida-estat.org/meta/e2_cenacs_cci.xml)
- (58) 1990 Census Block Groups in Florida [https://etdmpub.florida-estat.org/meta/e2\\_cenblkgrp\\_1990\\_cci.xml](https://etdmpub.florida-estat.org/meta/e2_cenblkgrp_1990_cci.xml)
- (59) 2000 Census Block Groups in Florida [https://etdmpub.florida-estat.org/meta/e2\\_cenblkgrp\\_2000\\_cci.xml](https://etdmpub.florida-estat.org/meta/e2_cenblkgrp_2000_cci.xml)
- (60) 2010 Census Block Groups in Florida [https://etdmpub.florida-estat.org/meta/e2\\_cenblkgrp\\_2010\\_cci.xml](https://etdmpub.florida-estat.org/meta/e2_cenblkgrp_2010_cci.xml)