

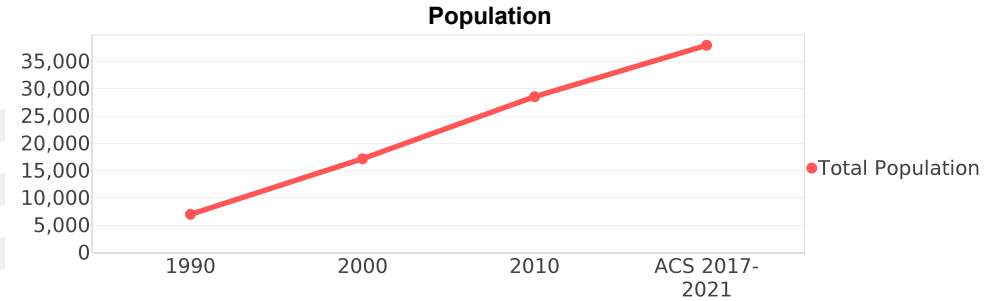
## Navarre (CDP)

Area: [2](#) 29,333 square miles  
 Jurisdiction - Cities: [3](#) NA  
 Jurisdiction - Counties: [3](#) Santa rosa



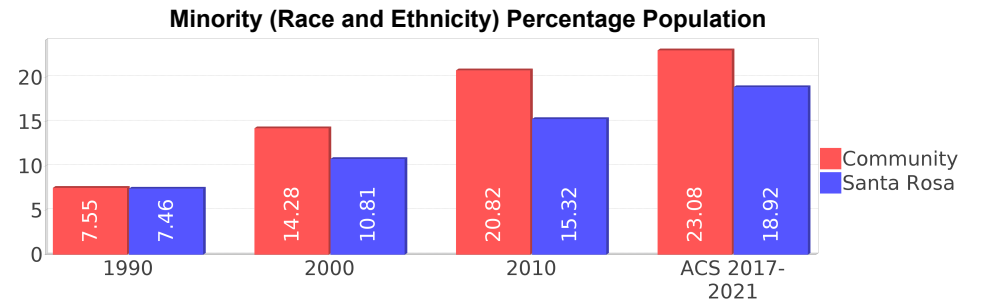
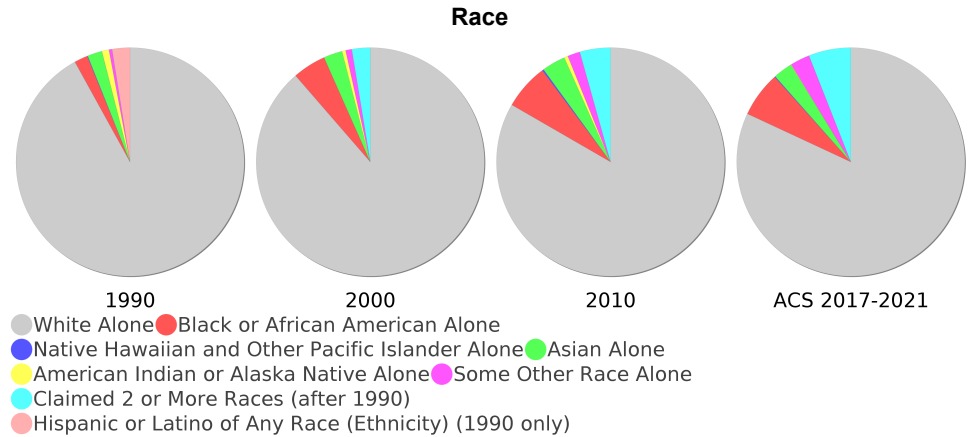
### General Population Trends

Description	1990	2000	2010 <sup>1</sup>	ACS 2017-2021
Total Population	7,007	17,172	28,528	37,955
Total Households	2,654	6,372	10,554	13,214
Average Persons per Acre	0.42	1.62	2.23	2.82
Average Persons per Household	2.61	2.69	2.92	2.81
Average Persons per Family	2.99	3.12	3.00	3.23
Males	3,563	8,747	14,176	19,206
Females	3,443	8,425	14,352	18,748



### Race and Ethnicity Trends <sup>5, 8, 9</sup>

Description	1990	2000	2010 <sup>1</sup>	ACS 2017-2021
White Alone	6,609 (94.32%)	15,217 (88.62%)	23,771 (83.33%)	31,093 (81.92%)
Black or African American Alone	136 (1.94%)	810 (4.72%)	1,841 (6.45%)	2,440 (6.43%)
Native Hawaiian and Other Pacific Islander Alone	5 (0.07%)	2 (0.01%)	57 (0.20%)	40 (0.11%)
Asian Alone	150 (2.14%)	453 (2.64%)	954 (3.34%)	1,029 (2.71%)
American Indian or Alaska Native Alone	73 (1.04%)	91 (0.53%)	156 (0.55%)	29 (0.08%)
Some Other Race Alone	31 (0.44%)	148 (0.86%)	502 (1.76%)	1,053 (2.77%)
Claimed 2 or More Races	NA (NA)	449 (2.61%)	1,244 (4.36%)	2,270 (5.98%)
Hispanic or Latino of Any Race (Ethnicity)	182 (2.60%)	700 (4.08%)	1,987 (6.97%)	3,307 (8.71%)
Not Hispanic or Latino (Ethnicity)	6,825 (97.40%)	16,472 (95.92%)	26,541 (93.03%)	34,648 (91.29%)
Minority (Race and Ethnicity)	529 (7.55%)	2,452 (14.28%)	5,939 (20.82%)	8,760 (23.08%)



## Age Trends <sup>5</sup>

Description	1990	2000	2010 <sup>1</sup>	ACS 2017-2021
Under Age 5	9.45%	6.84%	7.28%	5.55%
Ages 5-17	17.51%	21.63%	19.45%	20.57%
Ages 18-21	3.74%	3.46%	4.81%	5.01%
Ages 22-29	16.45%	8.04%	10.59%	9.92%
Ages 30-39	19.44%	21.63%	14.18%	14.86%
Ages 40-49	10.93%	15.70%	17.29%	15.53%
Ages 50-64	14.00%	13.95%	17.02%	17.44%
Age 65 and Over	8.43%	8.73%	9.38%	11.11%
-Ages 65-74	6.05%	6.17%	6.23%	7.61%
-Ages 75-84	2.03%	2.24%	2.66%	2.89%
-Age 85 and Over	0.34%	0.30%	0.49%	0.61%
Median Age	NA	35	36	36

## Income Trends <sup>12, 13, 5</sup>

Description	1990	2000	2010 <sup>1</sup>	ACS 2017-2021
Median Household Income	\$26,067	\$43,630	\$62,295	\$90,251
Median Family Income	\$27,582	\$48,011	\$73,519	\$96,980
Population below Poverty Level	10.96%	7.74%	11.75%	10.18%
Households below Poverty Level	8.70%	7.96%	8.18%	9.16%
Households with Public Assistance Income	4.18%	1.60%	0.70%	2.70%

## Disability Trends <sup>10</sup>

See the [Data Sources](#) section below for an explanation about the differences in disability data among the various years.

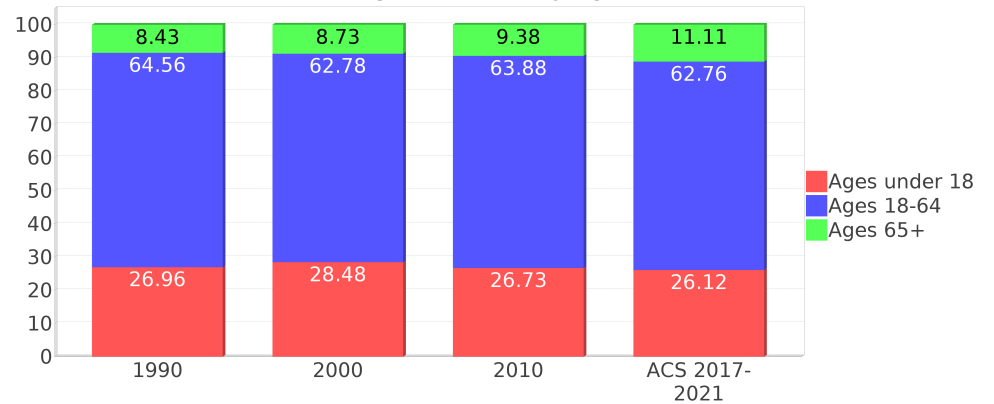
Description	1990	2000	2010 <sup>1</sup>	ACS 2017-2021
Population 16 To 64 Years with a disability	402 (8.96%)	2014 (13.78%)	(NA)	(NA)
Population 20 To 64 Years with a disability	(NA)	(NA)	(NA)	2206 (9.64%)

## Educational Attainment Trends <sup>11, 5</sup>

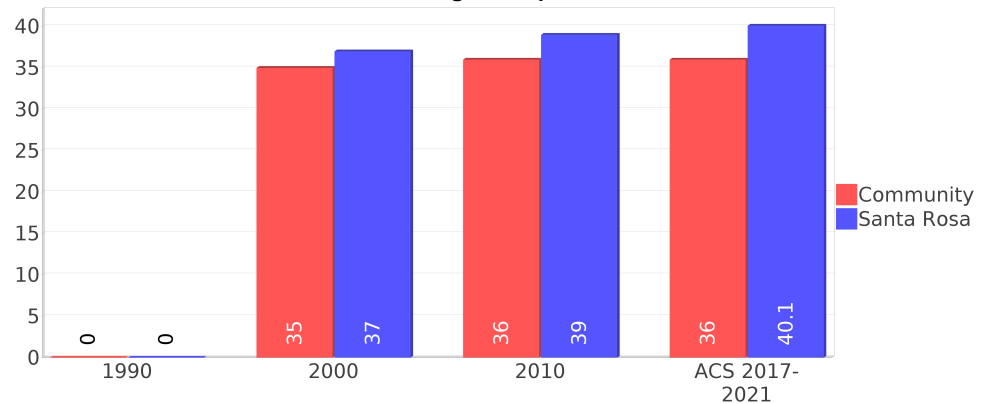
Age 25 and Over

Description	1990	2000	2010 <sup>1</sup>	ACS 2017-2021
Less than 9th Grade	231 (5.14%)	391 (3.46%)	464 (2.63%)	269 (1.09%)
9th to 12th Grade, No Diploma	695 (15.48%)	786 (6.95%)	982 (5.56%)	791 (3.20%)
High School Graduate or Higher	3,564 (79.38%)	10,134 (89.59%)	16,224 (91.81%)	23,652 (95.70%)
Bachelor's Degree or Higher	630 (14.03%)	2,781 (24.58%)	4,802 (27.17%)	7,336 (29.68%)

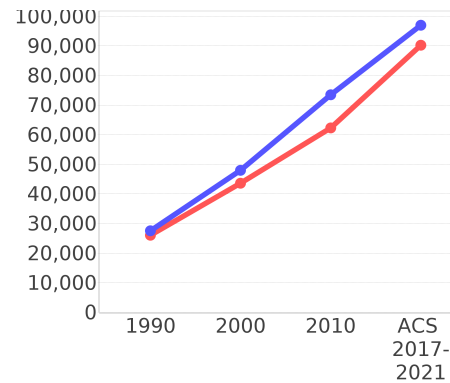
Percentage Population by Age Group



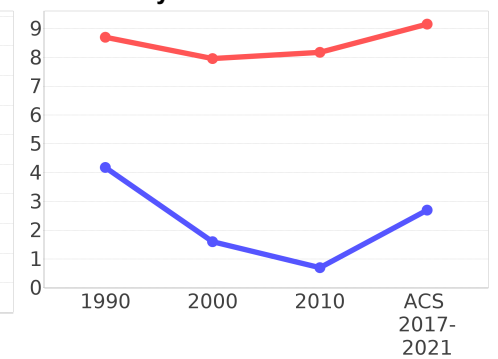
Median Age Comparison



Income Trends



Poverty and Public Assistance



## Language Trends <sup>5</sup>

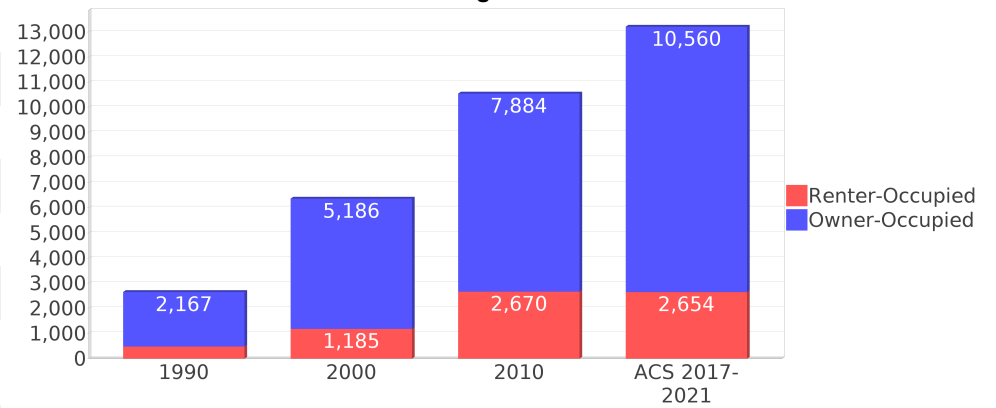
Age 5 and Over

Description	1990	2000	2010 <sup>1</sup>	ACS 2017-2021
Speaks English Well	129 (2.05%)	253 (1.58%)	660 (2.61%)	531 (1.48%)
Speaks English Not Well	NA (NA)	150 (0.94%)	398 (1.58%)	308 (0.86%)
Speaks English Not at All	NA (NA)	12 (0.08%)	83 (0.33%)	0 (0.00%)
Speaks English Not Well or Not at All	87 (1.38%)	162 (1.01%)	481 (1.90%)	308 (0.86%)
Speaks English Less than Very Well	NA (NA)	417 (2.61%)	1,142 (4.52%)	840 (2.34%)

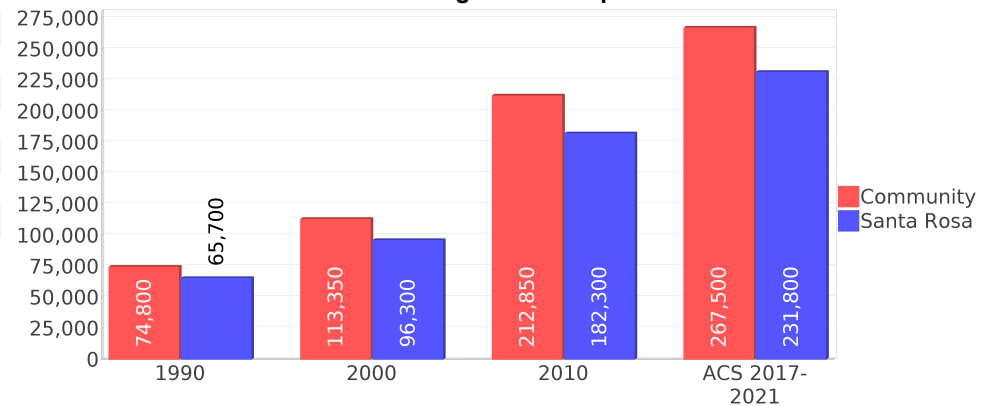
## Housing Trends <sup>5</sup>

Description	1990	2000	2010 <sup>1</sup>	ACS 2017-2021
Total	3,028	7,861	11,731	14,054
Units per Acre	0.22	0.57	0.85	1.01
Single-Family Units	1,471	5,179	9,020	11,880
Multi-Family Units	119	1,152	699	1,060
Mobile Home Units	1,056	1,526	1,430	1,092
Owner-Occupied Units	2,167	5,186	7,884	10,560
Renter-Occupied Units	486	1,185	2,670	2,654
Vacant Units	374	1,488	1,176	839
Median Housing Value	\$74,800	\$113,350	\$212,850	\$267,500
Occupied Housing Units w/No Vehicle	55 (2.07%)	135 (2.12%)	257 (2.43%)	232 (1.76%)

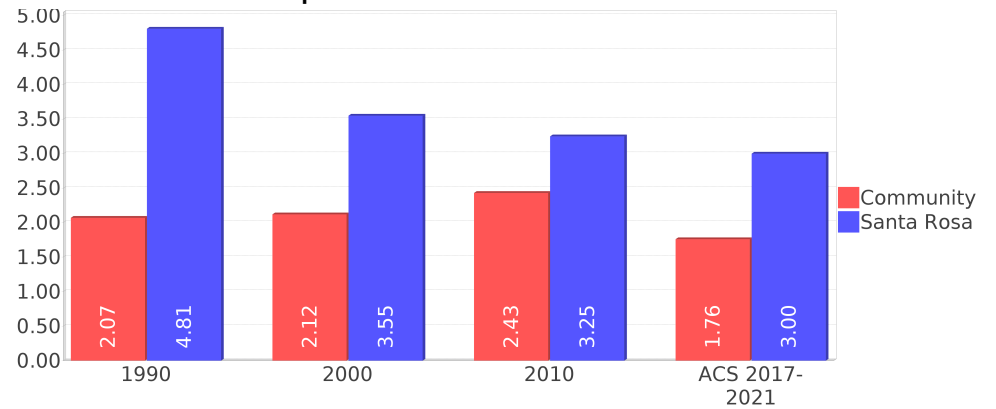
## Housing Tenure



## Median Housing Value Comparison



## Occupied Units With No Vehicles Available



## Geographic Mobility

Description	ACS 2017-2021
Median year householder moved into unit - Total	2015
Median year householder moved into unit - Owner Occupied	2013
Median year householder moved into unit - Renter Occupied	2017
Abroad 1 year ago	221
Different house in United States 1 year ago	6,574
Same house 1 year ago	30,724
Geographical Mobility in the Past Year - Total	37,520

## Computers and Internet

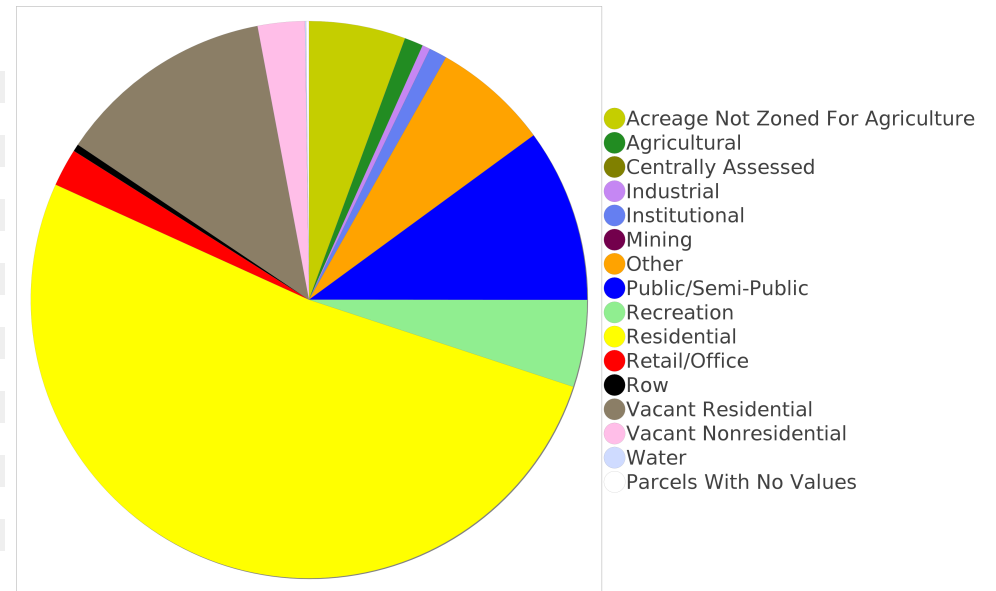
Description	ACS 2017-2021
Total Households Types of Computers in HH	13,214
Households with 1 or more device	12,851
Households with no computer	363
Total Households Presence and Types of Internet Subscriptions	13,214
Households with an internet subscription	12,520
Households with internet access without a subscription	110
Households with no internet access	584

## Household Languages

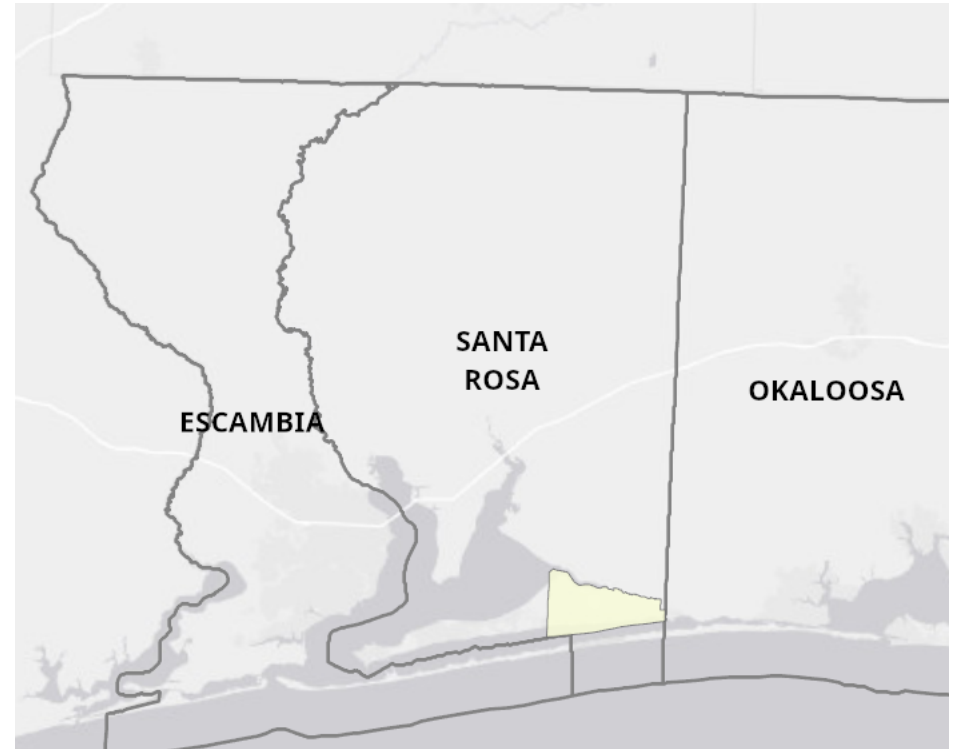
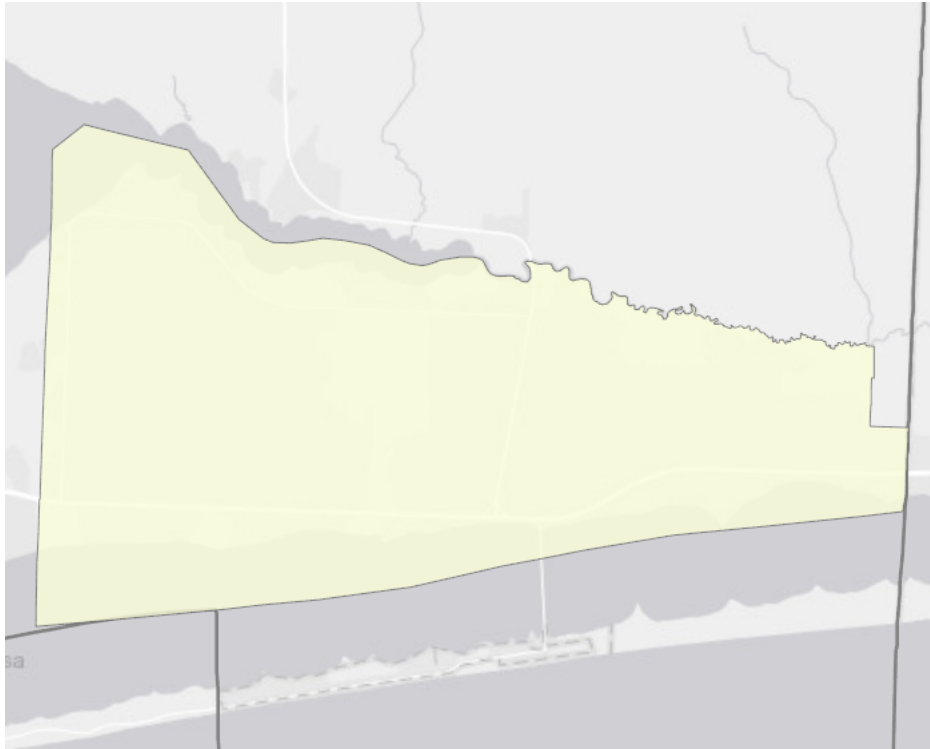
Description	ACS 2017-2021
Total Households by Household Language	13,214
Household Not Limited English Speaking Status	13,101
Spanish: Limited English speaking household	13
Indo-European languages: Limited English speaking household	43
Asian and Pacific Island languages: Limited English speaking household	57
Other languages: Limited English speaking household	0

## Existing Land Use <sup>15</sup>

Land Use Type	Acres	Percentage
Acreage Not Zoned For Agriculture	731	3.89%
Agricultural	141	0.75%
Centrally Assessed	0	0.00%
Industrial	60	0.32%
Institutional	136	0.72%
Mining	0	0.00%
Other	879	4.68%
Public/Semi-Public	1,310	6.98%
Recreation	657	3.50%
Residential	6,734	35.87%
Retail/Office	286	1.52%
Row	55	0.29%
Vacant Residential	1,646	8.77%
Vacant Nonresidential	356	1.90%
Water	9	0.05%
Parcels With No Values	21	0.11%



## Location Maps



## Community Facilities

The community facilities information below is useful in a variety of ways for environmental evaluations. These community resources should be evaluated for potential sociocultural effects, such as accessibility and relocation potential. The facility types may indicate the types of population groups present in the project study area. Facility staff and leaders can be sources of community information such as who uses the facility and how it is used. Additionally, community facilities are potential public meeting venues.

### Community and Fraternal Centers

Facility Name	Address	Zip Code
NAVARRE COMMUNITY CENTER	1917 HIGH SCHOOL BLVD	32566
YMCA - NAVARRE	2379 PAWNEE DR	32566
CHAMBER OF COMMERCE - NAVARRE BEACH	1917 NAVARRE SCHOOL RD	32566
ELKS LODGE 2787	2024 BLESSED LN	32566
AMERICAN LEGION POST 382	1850 LUNETTA ST	32566

### Cultural Centers

Facility Name	Address	Zip Code
NAVARRE LIBRARY	8484 JAMES M HARVELL RD	32566

### Fire Department and Rescue Station Facilities

Facility Name	Address	Zip Code
HOLLEY-NAVARRE FIRE DEPARTMENT STATION 41	6893 MANATEE ST	32566
HOLLEY-NAVARRE FIRE DEPARTMENT STATION 45	8618 ESPLANDE ST	32566
HOLLEY-NAVARRE FIRE DEPARTMENT STATION 43	8205 E BAY BLVD	32566

### Government Buildings

Facility Name	Address	Zip Code
U S POST OFFICE - NAVARRE	1910 NAVARRE SCHOOL RD	32566

### Law Enforcement Facilities

Facility Name	Address	Zip Code
SANTA ROSA COUNTY SHERIFF'S OFFICE - DISTRICT 2	8597 HIGH SCHOOL BLVD	32566

### Florida Parks and Recreational Facilities

Facility Name	Address	Zip Code
HOLLEY-BY-THE-SEA PARK #7	COVE RD & 1ST CT	32566
ALPINE BEACH PARK #1	SALEM AVE & NEWPORT ST	32566
WEST NAVARRE PARK	POMPANO ST	32566
NAVARRE SOCCER/FOOTBALL PARK	9299 MILITARY TRL	32566
HOLLEY-BY-THE-SEA PARK #1	WAVERLY CT	32566
NAVARRE PARK	8543 NAVARRE PKWY	32572
NAVARRE SPORTS COMPLEX	2497 PAWNEE DR	32566
HOLLEY-BY-THE-SEA PARK #4	PEPPERWOOD ST	32566
ALPINE BEACH PARK #2	NEWPORT ST & ALPINE DR	32566

Facility Name	Address	Zip Code
HOLLEY-BY-THE-SEA PARK #3	REXFORD ST	32566
WEST NAVARRE PARK	BLUETIP DR	32566
HOLLEY-BY-THE-SEA PARK #2	FRANKFORT ST & SMALLWOOD LN	32566

## Religious Centers

Facility Name	Address	Zip Code
CHURCH OF JESUS CHRIST OF LATTER DAY SAINTS	1751 SEA LARK LN	32566
LIVE OAK CHURCH OF NAVARRE	7304 EAST BAY BLVD	32566
ST AUGUSTINES EPISCOPAL CHURCH	7810 NAVARRE PARKWAY	32566
NAVARRE UNITED METHODIST CHURCH	9474 NAVARRE PARKWAY	32566
APOSTOLIC LIGHTHOUSE CHURCH	8177 EAST BAY BLVD	32566
LIVING WORD EVANGELISTIC ASSOCIATION	9031 SUNSET DRIVE	32566
NAVARRE PRESBYTERIAN CHURCH	1870 LOWE ROAD	32566
CALVARY FELLOWSHIP	2834 HWY 87 S	32566
NAVARRE FIRST ASSEMBLY OF GOD	9594 NAVARRE PARKWAY	32566
COMMUNITY OF CHRIST CHURCH	2111 PRESIDIO STREET	32566
NAVARRE CHAPEL & ACADEMY	9402 NAVARRE PARKWAY	32566
WAT FLORIDA BUDDHARAM CORP	2137 FOX DEN DR	32566
NEW LIFE DELIVERANCE TEMPLE	2104 PANHANDLE TRAIL	32566
RISEN SAVIOR LUTHERAN CHURCH	9664 NAVARRE PARKWAY	32566
NAVARRE CHURCH OF CHRIST	8490 JAMES HARVELL RD	32566
FIRST BAPTIST CHURCH OF NAVARRE	9336 NAVARRE PARKWAY	32566
COVENANT COMMUNITY CHURCH	9212 QUAIL ROOST DRIVE	32566

## Public Schools

Facility Name	Address	Zip Code
WEST NAVARRE PRIMARY SCHOOL	1955 LOWE RD	32566
NAVARRE HIGH SCHOOL	8600 HIGH SCHOOL BLVD	32566
HOLLEY-NAVARRE INTERMEDIATE	1936 NAVARRE SCHOOL RD	32566
WEST NAVARRE INTERMEDIATE SCHOOL	1970 COTTON BAY LN	32566
HOLLEY-NAVARRE MIDDLE SCHOOL	1976 WILLIAMS CREEK DR	32566
HOLLEY-NAVARRE PRIMARY	8019 ESCOLA ST	32566

## Veteran Organizations and Facilities

Facility Name	Address	Zip Code
AMERICAN LEGION POST 382	1850 LUNETTA STREET	32566

## Mobile Home Parks

Facility Name	Address	Zip Code
COLONIAL PINES MOBILE ESTATES	2101 COLONIAL AVE.	34955

## Group Care Facilities

Facility Name	Address	Zip Code
HOLLEY NAVARRE MIDDLE SCHOOL	1976 WILLIAM CREEK ROAD	32566
HOLLEY NAVARRE INTERMEDIATE	1936 NAVARRE SCHOOL ROAD	32566
TWELVE OAKS	2068 HEALTH CARE LANE	32566
HOLLEY NAVARRE PRIMARY	8019 ESCOLA STREET	32566
NAVARRE HIGH SCHOOL	8600 HIGH SCHOOL BOULEVARD	32566
GULF POINTE LATIN SCHOOL	6464 GULF BREEZE PARKWAY	32563
WEST NAVARRE INTERMEDIATE	1970 COTTON BAY LANE	32566
WEST NAVARRE PRIMARY	1155 LOWE ROAD	32566

## Block Groups

The following Census Block Groups were used to calculate demographics for this report.

### 1990 Census Block Groups

121130108038, 121130108021, 121130108037

### 2000 Census Block Groups

121130108072, 121130108052, 121130108051, 121130108021, 121130108061, 120910231001, 120910208009, 121130108062

### 2010 Census Block Groups

121130108152, 121130108113, 121130108171, 121130108192, 121130108022, 121130108172, 121130108111, 121130108191, 121130108112, 121130108021, 121130108193, 120910231002

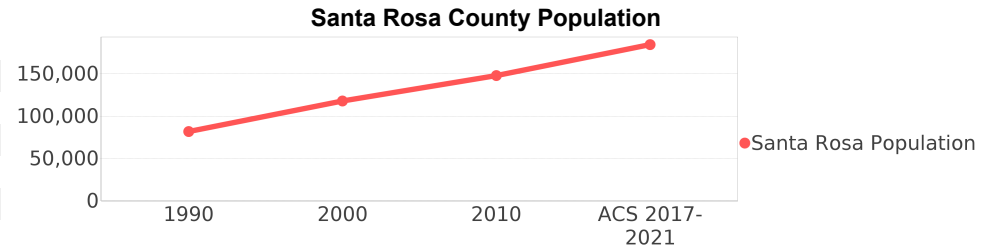
### Census Block Groups

121130108212, 121130108222, 121130108251, 121130108271, 120910231004, 121130108221, 121130108272, 121130108242, 121130108262, 121130108201, 121130108202, 121130108281, 121130108022, 121130108211, 121130108021, 121130108273, 121130108282, 121130108261

# Santa Rosa County Demographic Profile

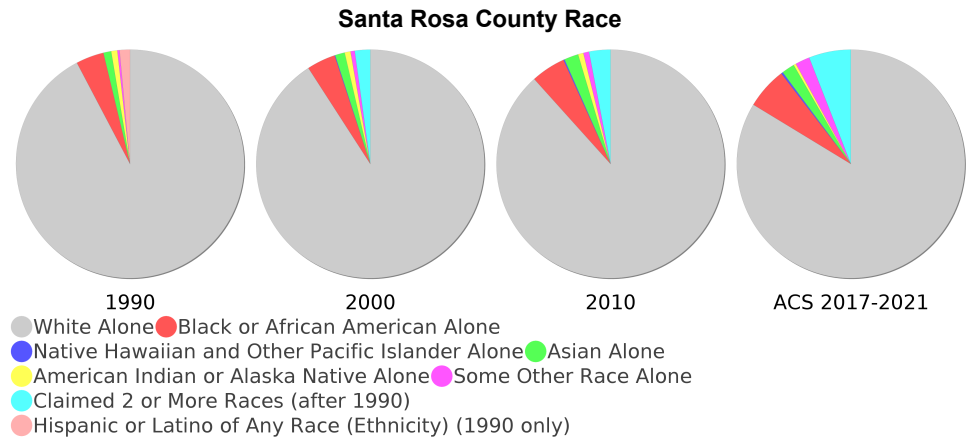
## General Population Trends - Santa Rosa <sup>5</sup>

Description	1990	2000	2010 <sup>1</sup>	ACS 2017-2021
Total Population	81,608	117,743	147,838	184,345
Total Households	29,900	43,793	54,860	67,534
Average Persons per Acre	0.125	0.18	0.225	0.28
Average Persons per Household	2.729	2.627	3.00	2.64
Average Persons per Family	3.10	3.05	3.08	3.13
Males	40,644	59,153	74,289	94,610



## Race and Ethnicity Trends - Santa Rosa <sup>5, 8, 9</sup>

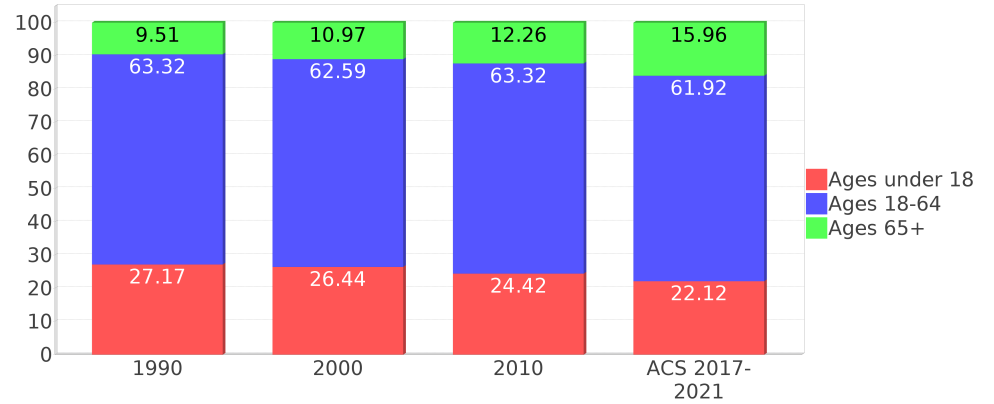
Description	1990	2000	2010 <sup>1</sup>	ACS 2017-2021
White Alone	76,385 (93.60%)	106,976 (90.86%)	130,575 (88.32%)	154,250 (83.67%)
Black or African American Alone	3,275 (4.01%)	4,777 (4.06%)	7,229 (4.89%)	10,831 (5.88%)
Native Hawaiian and Other Pacific Islander Alone	(NA)	111 (0.09%)	248 (0.17%)	481 (0.26%)
Asian Alone	911 (1.12%)	1,608 (1.37%)	2,987 (2.02%)	3,383 (1.84%)
American Indian or Alaska Native Alone	715 (0.88%)	1,006 (0.85%)	1,112 (0.75%)	647 (0.35%)
Some Other Race Alone	260 (0.32%)	678 (0.58%)	1,207 (0.82%)	3,777 (2.05%)
Claimed 2 or More Races	(NA)	2,587 (2.20%)	4,480 (3.03%)	10,976 (5.95%)
Hispanic or Latino of Any Race (Ethnicity)	1,223 (1.50%)	2,821 (2.40%)	6,061 (4.10%)	11,000 (5.97%)
Not Hispanic or Latino (Ethnicity)	80,385 (98.50%)	114,922 (97.60%)	141,777 (95.90%)	173,345 (94.03%)
Minority (Race and Ethnicity)	6,089 (7.46%)	12,727 (10.81%)	22,646 (15.32%)	34,875 (18.92%)



## Age Trends - Santa Rosa <sup>5</sup>

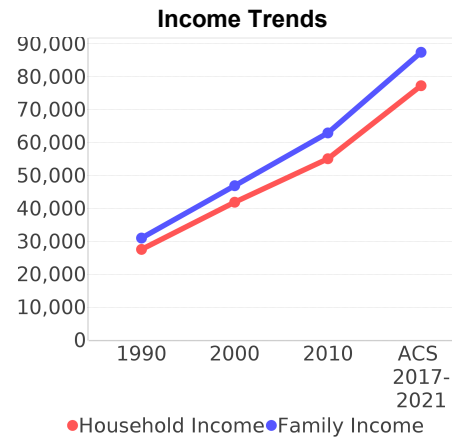
Description	1990	2000	2010 <sup>1</sup>	ACS 2017-2021
Under Age 5	7.81%	6.60%	6.10%	5.51%
Ages 5-17	19.36%	19.84%	18.33%	16.61%
Ages 18-21	5.14%	4.21%	4.87%	4.28%
Ages 22-29	13.13%	8.99%	9.59%	9.94%
Ages 30-39	17.23%	16.69%	13.25%	13.54%
Ages 40-49	13.57%	16.20%	16.25%	13.29%
Ages 50-64	14.26%	16.51%	19.37%	20.87%
Age 65 and Over	9.51%	10.97%	12.26%	15.96%
-Ages 65-74	6.14%	7.04%	7.61%	9.94%
-Ages 75-84	2.68%	2.98%	3.78%	4.57%
-Age 85 and Over	0.69%	0.96%	0.87%	1.45%
Median Age	NA	37	39	40.1

Percentage Population by Age Group - Santa Rosa

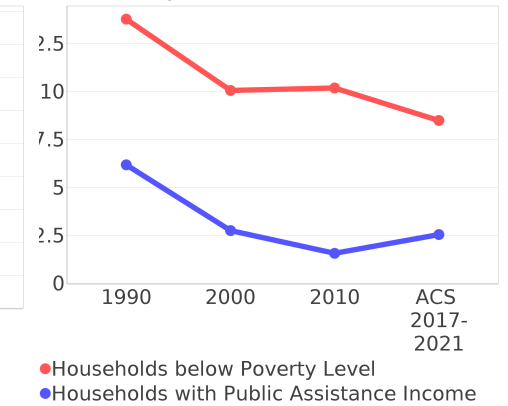


## Income Trends - Santa Rosa <sup>5</sup>

Description	1990	2000	2010 <sup>1</sup>	ACS 2017-2021
Median Household Income	\$27,584	\$41,881	\$55,129	\$77,260
Median Family Income	\$31,033	\$46,929	\$62,929	\$87,427
Population below Poverty Level	14.16%	9.83%	11.35%	8.84%
Households below Poverty Level	13.78%	10.06%	10.19%	8.50%
Households with Public Assistance Income	6.19%	2.76%	1.57%	2.55%



Poverty and Public Assistance



## Disability Trends - Santa Rosa <sup>10</sup>

See the Data Sources section below for an explanation about the differences in disability data among the various years.

Description	1990	2000	2010 <sup>1</sup>	ACS 2017-2021
Population 16 To 64 Years with a disability	5,795 (9.92%)	15,251 (14.56%)	NA (NA)	NA (NA)
Population 20 To 64 Years with a disability	NA (NA)	NA (NA)	NA (NA)	13,165 (12.54%)

## Educational Attainment Trends - Santa Rosa <sup>11, 5</sup>

Age 25 and Over

Description	1990	2000	2010 <sup>1</sup>	ACS 2017-2021
Less than 9th Grade	3,996 (7.70%)	3,120 (3.99%)	3,238 (3.26%)	2,294 (1.77%)
9th to 12th Grade, No Diploma	7,186 (13.84%)	8,265 (10.57%)	8,338 (8.38%)	7,698 (5.95%)
High School Graduate or Higher	40,740 (78.46%)	66,781 (85.43%)	87,874 (88.36%)	119,484 (92.28%)
Bachelor's Degree or Higher	9,653 (18.59%)	17,881 (22.88%)	24,610 (24.75%)	37,741 (29.15%)

## Language Trends - Santa Rosa <sup>5</sup>

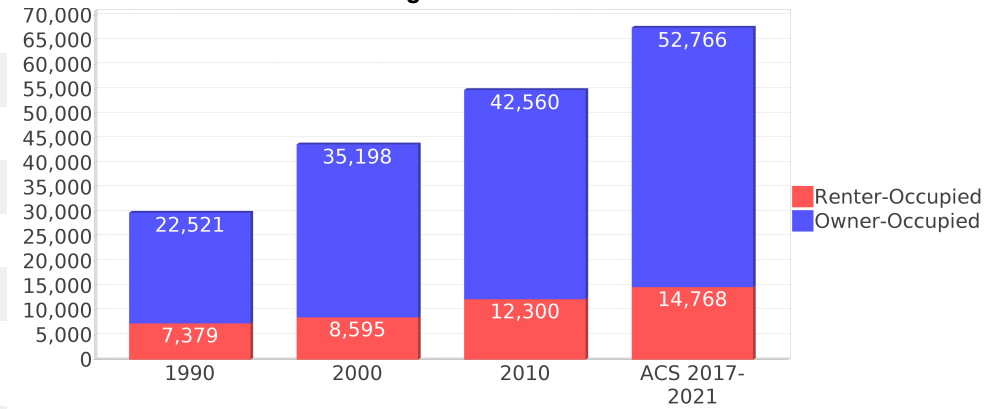
Age 5 and Over

Description	1990	2000	2010 <sup>1</sup>	ACS 2017-2021
Speaks English Well	581 (0.77%)	1,062 (0.97%)	1,968 (1.42%)	2,080 (1.19%)
Speaks English Not Well	NA (NA)	550 (0.50%)	1,018 (0.73%)	1,052 (0.60%)
Speaks English Not at All	NA (NA)	57 (0.05%)	260 (0.19%)	141 (0.08%)
Speaks English Not Well or Not at All	325 (0.43%)	607 (0.55%)	1,278 (0.92%)	1,193 (0.68%)
Speaks English Less than Very Well	NA (NA)	1,669 (1.52%)	3,246 (2.34%)	3,273 (1.88%)

## Housing Trends - Santa Rosa <sup>5</sup>

Description	1990	2000	2010 <sup>1</sup>	ACS 2017-2021
Total	32,831	49,119	63,059	74,878
Units per Acre	0.05	0.075	0.096	0.11
Single-Family Units	21,487	35,967	48,174	61,413
Multi-Family Units	2,620	4,510	6,631	6,710
Mobile Home Units	5,639	8,586	8,105	6,665
Owner-Occupied Units	22,521	35,198	42,560	52,766
Renter-Occupied Units	7,379	8,595	12,300	14,768
Vacant Units	2,931	5,326	8,199	7,344
Median Housing Value	\$65,700	\$96,300	\$182,300	\$231,800
Occupied Housing Units w/No Vehicle	1,439 (4.81%)	1,553 (3.55%)	1,783 (3.25%)	2,029 (3.00%)
Median year householder moved into unit - Total	NA	NA	NA	2013
Median year householder moved into unit - Owner Occupied	NA	NA	NA	2011
Median year householder moved into unit - Renter Occupied	NA	NA	NA	2017
Abroad 1 year ago	NA	NA	NA	794
Different house in United States 1 year ago	NA	NA	NA	27,997
Same house 1 year ago	NA	NA	NA	153,319
Geographical Mobility in the Past Year - Total	NA	NA	NA	153,319

## Housing Tenure - Santa Rosa



# Data Sources

## ACS vs Census Data

(1) The 2010 Census data is represented by a combination of decennial and ACS (2006-2010) data. The General Population Trends, Race and Ethnicity Trends, Age Trends are entirely from decennial. The Income Trends, Language Trends are entirely from the ACS. The Housing Trends section is derived from both: Decennial (Total # Housing Units, Housing Units per Acre, Owner-Occupied Units, Renter-Occupied Units, Vacant Units); ACS (Single Family Units, Multi-family Units, Mobile Homes, Median Housing Value, Occupied Housing Units w/No Vehicle).

## Area

(2) The geographic area of the community based on a user-defined community boundary or area of interest (AOI) boundary.

## Jurisdiction

(3) Jurisdiction(s) includes local government boundaries that intersect the user-defined community or AOI boundary.

## Goals, Values and History

(4) Information under the headings Goals and Values and History is entered manually by the user before the Sociocultural Data Report (SDR) is generated. This information is usually not available for communities with boundaries that are based on Census-defined places (i.e., not user-specified).

## Demographic Data

(5) Demographic data reported under the headings General Population Trends, Race and Ethnicity Trends, Age Trends, Income Trends, Educational Attainment Trends, Language Trends, and Housing Trends is from the U.S. Decennial Census for 1990 and 2000 and the American Community Survey (ACS) 5-year estimates for 2006-2010 and ACS 2017-2021. The data was gathered at the block group level for user-defined communities, Census places, and AOIs, and at the county level for counties. Depending on the dataset, the data represents 100% counts (Census Summary File 1) or sample-based information (Census Summary File 3 or ACS). For more information about using demographic data, please see the training videos located here: <https://www.fdot.gov/environment/pubs/sce/sce1.shtm>.

## About the Census Data

(6) The block group analysis for ETDM project analysis areas, user-defined communities, Census places, and AOI boundaries do not always correspond precisely to block group boundaries. To estimate the actual population more accurately, the SDR analysis adjusts the geographic area and data of affected block groups using the following methodology:

Delete overlapping census blocks with extremely low populations (2 or fewer people)  
Remove the portion of the block group that lies outside of the analysis area  
Recalculate the demographics assuming an equal area distribution of the population

Note that there may be areas where there is no population.

(7) Use caution when comparing the 100% count data (Decennial Census) to the sample-based data (ACS). In any given year, about one in 40 U.S. households will receive the ACS questionnaire. Over any five-year period, about one in eight households will receive the questionnaire, as compared to about one in six that received the long form questionnaire for the Decennial Census 2000. (Source: [https://www.census.gov/content/dam/Census/programs-surveys/acs/news/10ACS\\_keyfacts.pdf](https://www.census.gov/content/dam/Census/programs-surveys/acs/news/10ACS_keyfacts.pdf)) The U.S. Census Bureau provides help with this process: <https://www.census.gov/programs-surveys/acs/guidance/comparing-acs-data.html>

(8) Race and ethnicity are separate questions on the Census questionnaire. Individuals can report multiple race and ethnicity answers; therefore, numbers in the Race and Ethnicity portion of this report may add up to be greater than the total population. In addition, use caution when interpreting changes in race and ethnicity over time. Starting with the 2000 Decennial Census, respondents could select one or more race categories. Also in 2000, the placement of the question about Hispanic origin changed, helping to increase responsiveness to the Hispanic-origin question. Because of these and other changes, the 1990 data on race and ethnicity are not directly comparable with data from later censuses. (Source: <https://www.census.gov/library/publications/2001/dec/c2kbr01-01.html>)

(9) The "Minority" calculations use both the race and ethnicity responses from Census and ACS data. In this report, "Minority" refers to individuals who list a race other than White and/or list their ethnicity as Hispanic/Latino. In other words, people who are multi-racial, any single race other than White, or Hispanic/Latino of any race are considered minorities. We use the following formula:  $MINORITY = TOTALPOP - WHITE\_NH$  where TOTALPOP is the Total Population and WHITE\_NH is the population with a race of White alone and an ethnicity of Not Hispanic or Latino. Translating this to the field names used in the census ACS source data, the formula looks like this:  $MINORITY = B01003\_E001 - B03002\_E003$ . (Note, the WHITE\_NH population is not reported separately in this report.)

(10) Disability data is not included in the 2010 Decennial Census or the 2006-2010 ACS. This data is available in the ACS 2017-2021 ACS. Because of changes made to the Census and ACS questions between 1990 and ACS, disability variables should not be compared from year to year. For example: 1) with the 1990 data, the disabilities are listed as a "work disability" while this distinction is not made with 2000 or ACS data; 2) the ACS data includes the institutionalized population (e.g. persons in prisons and group homes) while this population is not included in 1990 or 2000; and 3) the age groupings changed over the years.

(11) The category Bachelor's Degree or Higher under the heading Educational Attainment Trends is a subset of the category High School Graduate or Higher.

(12) Income of households. This includes the income of the householder and all other individuals 15 years old and over in the household, whether they are related to the householder or not. Because many households consist of only one person, average household income is usually less than average family income.

(13) Income of families. In compiling statistics on family income, the incomes of all members 15 years old and over related to the householder are summed and treated as a single amount.

(14) Age trends. The median age for 1990 is not available.

## Land Use Data

(15) The Land Use information Indicates acreages and percentages for the generalized land use types used to group parcel-specific, existing land use assigned by the county property appraiser office according to the Florida Department of Revenue land use codes.

## Community Facilities Data

- (16) Assisted Rental Housing Units - Identifies multifamily rental developments that receive funding assistance under federal, state, and local government programs to offer affordable housing as reported by the Shimberg Center for Housing Studies, University of Florida.
- (17) Mobile Home Parks - Identifies approved or acknowledged mobile home parks reported by the Florida Department of Business and Professional Regulation and Florida Department of Health.
- (18) Migrant Camps - Identifies migrant labor camp facilities inspected by the Florida Department of Health.
- (19) Group Care Facilities - Identifies group care facilities inspected by the Florida Department of Health.
- (20) Community Center and Fraternal Association Facilities - Identifies facilities reported by multiple sources.
- (21) Law Enforcement Correctional Facilities - Identifies facilities reported by multiple sources.
- (22) Cultural Centers - Identifies cultural centers including organizations, buildings, or complexes that promote culture and arts (e.g., aquariums and zoological facilities; arboreta and botanical gardens; dinner theaters; drive-ins; historical places and services; libraries; motion picture theaters; museums and art galleries; performing arts centers; performing arts theaters; planetariums; studios and art galleries; and theater producers stage facilities) reported by multiple sources.
- (23) Fire Department and Rescue Station Facilities - Identifies facilities reported by multiple sources.
- (24) Government Buildings - Identifies local, state, and federal government buildings reported by multiple sources.
- (25) Health Care Facilities - Identifies health care facilities including abortion clinics, dialysis clinics, medical doctors, nursing homes, osteopaths, state laboratories/clinics, and surgicenters/walk-in clinics reported by the Florida Department of Health.
- (26) Hospital Facilities - Identifies hospital facilities reported by multiple sources.
- (27) Law Enforcement Facilities - Identifies law enforcement facilities reported by multiple sources.
- (28) Parks and Recreational Facilities - Identifies parks and recreational facilities reported by multiple sources.
- (29) Religious Center Facilities - Identifies religious centers including churches, temples, synagogues, mosques, chapels, centers, and other types of religious facilities reported by multiple sources.
- (30) Private and Public Schools - Identifies private and public schools reported by multiple sources.
- (31) Social Service Centers - Identifies social service centers reported by multiple sources.
- (32) Veteran Organizations and Facilities

# County Data Sources

## ACS vs Census Data

(1) The 2010 Census data is represented by a combination of decennial and ACS (2006-2010) data. The General Population Trends, Race and Ethnicity Trends, Age Trends are entirely from decennial. The Income Trends, Language Trends are entirely from the ACS. The Housing Trends section is derived from both: Decennial (Total # Housing Units, Housing Units per Acre, Owner-Occupied Units, Renter-Occupied Units, Vacant Units); ACS (Single Family Units, Multi-family Units, Mobile Homes, Median Housing Value, Occupied Housing Units w/No Vehicle).

## About the Census Data

(34) Use caution when comparing the 100% count data (Decennial Census) to the sample-based data (ACS). In any given year, about one in 40 U.S. households will receive the ACS questionnaire. Over any five-year period, about one in eight households will receive the questionnaire, as compared to about one in six that received the long form questionnaire for the Decennial Census 2000. (Source: [https://www.census.gov/content/dam/Census/programs-surveys/acs/news/10ACS\\_keyfacts.pdf](https://www.census.gov/content/dam/Census/programs-surveys/acs/news/10ACS_keyfacts.pdf)) The U.S. Census Bureau provides help with this process: <https://www.census.gov/programs-surveys/acs/guidance/comparing-acs-data.html>

(35) Race and ethnicity are separate questions on the Census questionnaire. Individuals can report multiple race and ethnicity answers; therefore, numbers in the Race and Ethnicity portion of this report may add up to be greater than the total population. In addition, use caution when interpreting changes in race and ethnicity over time. Starting with the 2000 Decennial Census, respondents could select one or more race categories. Also in 2000, the placement of the question about Hispanic origin changed, helping to increase responsiveness to the Hispanic-origin question. Because of these and other changes, the 1990 data on race and ethnicity are not directly comparable with data from later censuses. (Source: <https://www.census.gov/library/publications/2001/dec/c2kbr01-01.html>)

(36) The "Minority" calculations use both the race and ethnicity responses from Census and ACS data. In this report, "Minority" refers to individuals who list a race other than White and/or list their ethnicity as Hispanic/Latino. In other words, people who are multi-racial, any single race other than White, or Hispanic/Latino of any race are considered minorities. We use the following formula:  $MINORITY = TOTALPOP - WHITE\_NH$  where TOTALPOP is the Total Population and WHITE\_NH is the population with a race of White alone and an ethnicity of Not Hispanic or Latino. Translating this to the field names used in the census ACS source data, the formula looks like this:  $MINORITY = B01003\_E001 - B03002\_E003$ . (Note, the WHITE\_NH population is not reported separately in this report.)

(37) Disability data is not included in the 2010 Decennial Census or the 2006-2010 ACS. This data is available in the ACS 2017-2021 ACS. Because of changes made to the Census and ACS questions between 1990 and ACS, disability variables should not be compared from year to year. For example: 1) with the 1990 data, the disabilities are listed as a "work disability" while this distinction is not made with 2000 or ACS data; 2) the ACS data includes the institutionalized population (e.g. persons in prisons and group homes) while this population is not included in 1990 or 2000; and 3) the age groupings changed over the years.

(38) The category Bachelor's Degree or Higher under the heading Educational Attainment Trends is a subset of the category High School Graduate or Higher.

## Metadata

- (39) Community and Fraternal Centers [https://etdmpub.florida-estat.org/meta/gc\\_communitycenter.xml](https://etdmpub.florida-estat.org/meta/gc_communitycenter.xml)
- (40) Correctional Facilities in Florida [https://etdmpub.florida-estat.org/meta/gc\\_correctional.xml](https://etdmpub.florida-estat.org/meta/gc_correctional.xml)
- (41) Cultural Centers in Florida [https://etdmpub.florida-estat.org/meta/gc\\_culturecenter.xml](https://etdmpub.florida-estat.org/meta/gc_culturecenter.xml)
- (42) Fire Department and Rescue Station Facilities in Florida [https://etdmpub.florida-estat.org/meta/gc\\_firestat.xml](https://etdmpub.florida-estat.org/meta/gc_firestat.xml)
- (43) Local, State, and Federal Government Buildings in Florida [https://etdmpub.florida-estat.org/meta/gc\\_govbuild.xml](https://etdmpub.florida-estat.org/meta/gc_govbuild.xml)
- (44) Florida Health Care Facilities [https://etdmpub.florida-estat.org/meta/gc\\_health.xml](https://etdmpub.florida-estat.org/meta/gc_health.xml)
- (45) Hospital Facilities in Florida [https://etdmpub.florida-estat.org/meta/gc\\_hospitals.xml](https://etdmpub.florida-estat.org/meta/gc_hospitals.xml)
- (46) Law Enforcement Facilities in Florida [https://etdmpub.florida-estat.org/meta/gc\\_lawenforce.xml](https://etdmpub.florida-estat.org/meta/gc_lawenforce.xml)
- (47) Florida Parks and Recreational Facilities [https://etdmpub.florida-estat.org/meta/gc\\_parks.xml](https://etdmpub.florida-estat.org/meta/gc_parks.xml)
- (48) Religious Centers [https://etdmpub.florida-estat.org/meta/gc\\_religion.xml](https://etdmpub.florida-estat.org/meta/gc_religion.xml)
- (49) Florida Public and Private Schools [https://etdmpub.florida-estat.org/meta/gc\\_schools.xml](https://etdmpub.florida-estat.org/meta/gc_schools.xml)
- (50) Social Service Centers [https://etdmpub.florida-estat.org/meta/gc\\_socialservice.xml](https://etdmpub.florida-estat.org/meta/gc_socialservice.xml)
- (51) Assisted Rental Housing Units in Florida [https://etdmpub.florida-estat.org/meta/gc\\_assisted\\_housing.xml](https://etdmpub.florida-estat.org/meta/gc_assisted_housing.xml)
- (52) Group Care Facilities <https://etdmpub.florida-estat.org/meta/groupcare.xml>
- (53) Mobile Home Parks in Florida [https://etdmpub.florida-estat.org/meta/gc\\_mobilehomes.xml](https://etdmpub.florida-estat.org/meta/gc_mobilehomes.xml)
- (54) Migrant Camps in Florida <https://etdmpub.florida-estat.org/meta/migrant.xml>
- (55) Veteran Organizations and Facilities [https://etdmpub.florida-estat.org/meta/gc\\_veterans.xml](https://etdmpub.florida-estat.org/meta/gc_veterans.xml)
- (56) Generalized Land Use [https://etdmpub.florida-estat.org/meta/lu\\_gen.xml](https://etdmpub.florida-estat.org/meta/lu_gen.xml)
- (57) Census Block Groups in Florida [https://etdmpub.florida-estat.org/meta/e2\\_cenacs\\_cci.xml](https://etdmpub.florida-estat.org/meta/e2_cenacs_cci.xml)
- (58) 1990 Census Block Groups in Florida [https://etdmpub.florida-estat.org/meta/e2\\_cenblkgrp\\_1990\\_cci.xml](https://etdmpub.florida-estat.org/meta/e2_cenblkgrp_1990_cci.xml)
- (59) 2000 Census Block Groups in Florida [https://etdmpub.florida-estat.org/meta/e2\\_cenblkgrp\\_2000\\_cci.xml](https://etdmpub.florida-estat.org/meta/e2_cenblkgrp_2000_cci.xml)
- (60) 2010 Census Block Groups in Florida [https://etdmpub.florida-estat.org/meta/e2\\_cenblkgrp\\_2010\\_cci.xml](https://etdmpub.florida-estat.org/meta/e2_cenblkgrp_2010_cci.xml)